

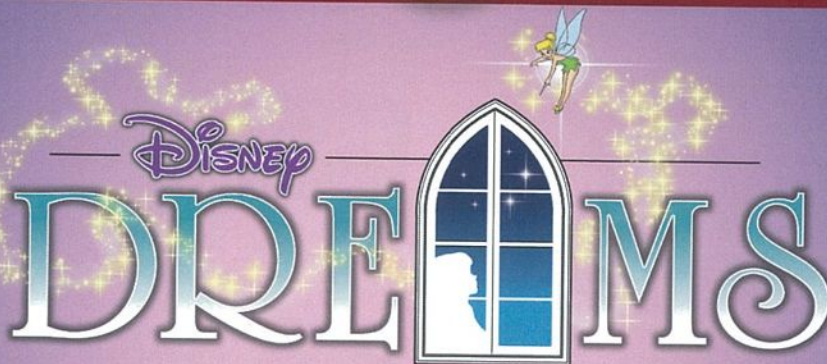
PERSONAL NAVIGATOR

THURSDAY, APRIL 3, 2014

Sunrise: 7:05 a.m. Sunset: 7:34 p.m.
Evening Attire: Cruise Casual

Today: Partly Sunny High: 74°F/23°C
Tomorrow: Partly Sunny High: 76°F/24°C

DAY AT SEA



AN ENCHANTED CLASSIC

*In this spectacular fantasy, a little girl discovers the power of her dreams.
Fly through the air with Peter Pan and your imagination, as many Classic Disney Characters
spring to life. With a little Faith, Trust and Pixie Dust you'll see that your dreams can come true!*

WALT DISNEY THEATRE

Deck 4, Forward

6:15 p.m. & 8:30 p.m.

As a courtesy to all Guests, we kindly advise that the saving of seats is **not** permitted in the Walt Disney Theatre.



Assistance available at the entrance to the Walt Disney Theatre 30 minutes prior to show time.

Disney MAGIC Fun Facts

Tonnage: 84,000

Length Overall: 984 Feet

Ship's Registry: The Bahamas

Important Dates

Keel Laid: October 31, 1996

Launch Date: April 12, 1997

Inaugural Cruise: July 30, 1998

• The Magic was built by a process called Jumboisation (in 2 separate sections) in Italy at the Fincantieri Maghera Shipyard (stern) and the Fincantieri Ancona Shipyard (bow). The joint of the ship is just in front of Lumiere's.

• The anchor of the Disney Magic weighs 28,200 lbs (12,802.8kg) - the same weight as three elephants.

• Over 50 nationalities make up the 960 Crew Members on board.

• Sorcerer Mickey stands proudly 10 ft tall on the bow of the ship. There are other characters in the artwork around him.

• Goofy hangs 20 ft tall, painting the finishing touches on the stern.

'TIL WE MEET AGAIN

FAREWELL SHOW

The world-famous Disney Characters and some of your new friends from the Disney Magic stage shows bid you a charming farewell.

Lobby Atrium,
Deck 3, Midship,
10:00 p.m.

Don't Miss:

Magic Workshop (6+)

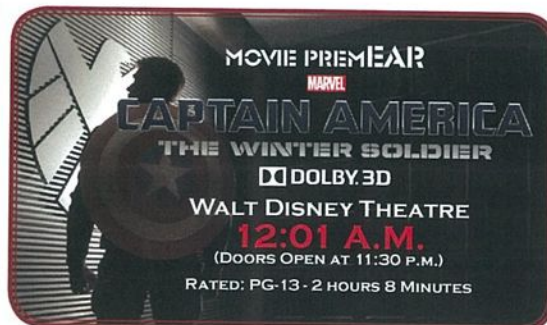
Fathoms, Deck 3, Forward - 7:30 p.m.

Scott Pepper teaches you the basics of magic in this fun family event.

80's Flashback (18+)

Fathoms, Deck 3, Forward - 11:00 p.m.

The 80's are back! Join your Cruise Staff team, in testing your 80's knowledge in this high energy 80's revival.



Debark Talk Broadcast

Important information regarding disembarkation procedures for Port Canaveral and your journey home will be covered in this debarkation briefing. The broadcast will be shown continuously on channel 24-2 of your stateroom television for your convenience.

Thank you in advance for completing your comment card.

DINNER MENU

Animator's Palate: Show Dinner
Carioca's: South American Dinner
Lumiere's: French Dinner

DRINK OF THE DAY

High Tide (Alcoholic)
Purple Basil Lemonade (Non Alcoholic)

IMPORTANT NUMBERS

Fire/Security: 7-3001
Medical Emergency: 7-3000
Health Center: 7-1923

ADULT ACTIVITY HIGHLIGHTS



SENSES SPA FITNESS CLASSES & SEMINARS

Body Sculpt Boot Camp - Senses Spa Fitness Center - 8:00 a.m.
Wake Up & Stretch Class - Senses Spa & Salon - 9:00 a.m.
Group Cycling - Senses Spa & Salon - 10:00 a.m.
Secrets to a Flatter Stomach - Senses Spa & Salon - 12:00 p.m.
Detox for Health & Weight Loss - Senses Spa & Salon - 1:30 p.m.
Yoga - Senses Spa & Salon - 4:30 p.m.

TASTING CLASSES

Chocolate Tasting (21+) - Keys - 12:00 p.m.
Tequila & Margarita Tasting (21+) - Keys - 1:30 p.m.
Beer Tasting (21+) - Keys - 3:00 p.m.
 Please make reservations for tastings at Guest Services for a nominal fee.
 Tasting Seminars are only for Guests 21 and Older.

CLUB
18*21

CLUB 18*21 - BRUNCH

Lumiere's, Deck 3, Midship - 11:30 a.m.

CLUB 18*21 - GAME CHALLENGE

O'Gills Pub, Deck 3, Forward - 5:15 p.m.

CLUB 18*21 - FAREWELL

O'Gills Pub, Deck 3, Forward - 10:00 p.m.

ART OF THE THEME SHOW TOUR

Palo, Deck 10, Aft - 9:00 a.m. & 4:00 p.m.

Join us on a guided ship tour and discover the key ingredients that make the Disney Magic one-of-a-kind.



ESPN DREAM TEAM DRAFT DAY - BASKETBALL

O'Gills Pub, Deck 3, Forward - 1:45 p.m.

Join the "Commissioner" and engage in this interactive fantasy basketball draft unlike anything you've ever seen! Can YOU draft the greatest basketball team of All-Time?

ANYONE CAN COOK - APPLE STRUDEL

D Lounge, Deck 4, Midship - 2:30 p.m.

From our galley to yours. Join our chefs as they show you how to prepare delicious dishes. Today's Menu - Apple Strudel

80'S MUSIC TRIVIA

O'Gills Pub, Deck 3, Forward - 7:30 p.m.

Let's step back in time as we test your 80's music knowledge.

FUN FOR ALL AGES HIGHLIGHTS



WAKE UP WITH DISNEY JUNIOR

D Lounge, Deck 4, Midship - 8:30 a.m.

What happens when you experience unlimited fun with your favorite Disney Junior shows? You get an exciting dance party designed especially for preschoolers ages seven and under.

\$10,000 MEGA JACKPOT BINGO

Fathoms, Deck 3, Forward - 10:45 a.m. (Pre Sales at 10:30 a.m.)

It's Big, it's Massive, it's Supersized! It's \$10,000 MEGA Jackpot Bingo! Take home \$10,000 if you can cover your card in 46 numbers or less. If not, we carry on to play for the biggest cash prize of the session, plus today's Disney Vacation Club sponsored raffle includes a \$100 Onboard Credit and prize-packs.



JAM FEST AT SEA

Deck Stage, Deck 9, Midship - 12:15 p.m.

Are you ready for a jammin' good time? Imagine your favorite Disney Channel music and stars coming together to create the biggest Jam Fest at Sea! Great music, cool music videos and hot dance moves that are off the charts. Come out to be part of the action!



MICKEY 200

Fathoms, Deck 3, Forward - 12:45 p.m.

Don't eat your vegetables... race them in this wild and wacky charge to the finish line. May the best veggie win! (Limited Availability)



MAGIC QUEST

Fathoms, Deck 3, Forward - 2:45 p.m.

Enjoy the wildest and wackiest scavenger team event on the seven seas!

TOWEL FOLDING

Fathoms, Deck 3, Forward - 2:00 p.m.

Learn to create those amazing towel creatures you've seen in your stateroom all cruise long.



FINAL JACKPOT BINGO

Fathoms, Deck 3, Forward - 4:00 p.m. (Pre Sales at 3:30 p.m.)

The snowball jackpot MUST BE WON at this final session! Beat the line and get your cards early. Who will be the lucky winner? It could be you!

SO YOU THINK YOU KNOW YOUR FAMILY?

D Lounge, Deck 4, Midship - 7:30 p.m.

This fun-filled family game show is always full of surprises. Find out how well you know, or don't know your family!



YOUTH ACTIVITIES HIGHLIGHTS

DINE & PLAY

As a convenience for families dining at 8:15 p.m., our Youth Activities Counselors will be available at 9:15 p.m. at the entrance of Lumiere's and Carioca's and 9:30 p.m. at Animator's Palate to bring registered children to join the fun in Disney's Oceaneer Club and Disney's Oceaneer Lab.



Deck 5, Aft (7-5864)

8:00 a.m. - 11:30 p.m.

Infants and Toddlers can enjoy toys and activities at It's a Small World Nursery. Reservations are first come, first served so please stop by!



Deck 5, Midship (7-1440)

(3-12 years old)

9:00 a.m. - 12:00 mid

MARVEL AVENGERS ACADEMY

7:15 p.m.

Young Heroes Assemble! S.H.I.E.L.D and The Avengers need your help in defeating the evil Red Skull and his dreaded Cabal.

TOY STORY BOOT CAMP

9:30 p.m.

Join Corporal Green in our own version of boot camp as we learn how to have fun - The Toy Story way!



Deck 5, Midship (7-1445)

(3-12 years old)

9:00 a.m. - 12:00 mid

PISTON CUP CHALLENGE

2:30 p.m.

It's Dinoco time and you're part of the pit crew! Design your own race car and see if you've got what it takes to end up in the Winner's Circle!

FRIENDSHIP ROCKS

5:00 p.m.

Come and celebrate with all the children from the Oceaneer Club and Lab in the jammin' performance of Friendship Rocks! You won't want to miss any of the fun.



Deck 2, Midship (7-5816)

(11-14 years old)

10:00 a.m. - 12:00 mid

ANYONE CAN COOK

7:30 p.m.

Anyone can cook as we work together to create some of our favorite treats.

HOW WELL DO YOU KNOW YOUR COUNSELOR?

10:00 p.m.

Do you think you know all there is to know about your counselors? Come test out your knowledge with all of your friends!



Deck 10, Midship (7-18517)

(14-17 years old)

10:00 a.m. - 1:00 a.m.

GOTCHA

11:00 a.m.

You will try to eliminate your victim by various methods collecting points throughout the day, last person standing with the most points wins.

ZOMBIFIED PREMIERE

10:00 p.m.

One time only! Come join us for this exclusive big screen premiere of "Zombified," a film featuring the Teens of Vibe as the cast!

BUENA VISTA THEATRE

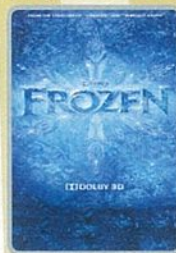
Deck 5, Aft Today's Movies

DOLBY 3D

DOLBY 3D



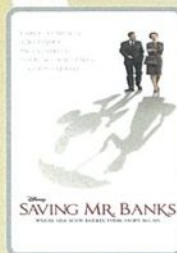
8:30 a.m.
Duration:
1 hr 52 mins
Rating: PG



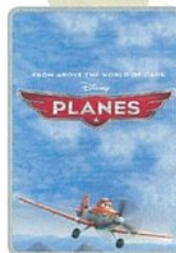
10:45 a.m.
Duration:
1 hr 48 mins
Rating: PG



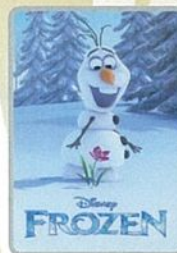
1:00 p.m.
Duration:
2 hrs 10 mins
Rating: PG-13



3:30 p.m.
Duration:
2 hrs 5 mins
Rating: PG-13



6:00 p.m. & 8:15 p.m.
Duration:
1 hr 32 mins
Rating: PG



10:45 p.m.
Duration:
1 hr 48 mins
Rating: PG



Calling all baby cruisers!
The Disney Magic's babies
take to the mat to see who's
the fastest crawler of the
seven seas!

Lobby Atrium,
Deck 3, Midship,
11:30 a.m.



VARIETY ACT

Featuring the Magic & Illusion
of Scott Pepper.

Magic Workshop,
Fathoms (6+), Deck 3, Forward,
7:30 p.m.

Adult Exclusive Show,
Fathoms (18+), Deck 3, Forward,
10:30 p.m.

YOUTH ACTIVITIES OPEN HOUSE

Open House is an opportunity for all to come and participate in a variety of exciting activities and free time in the Oceaneer Club, Oceaneer Lab, Edge, Vibe, and It's a Small World Nursery throughout the cruise. During these times secured programming will still be offered in the other venues for those looking to check their children into care.

Vibe: 10:00 a.m. - 11:00 a.m.
Edge: 10:00 a.m. - 11:00 a.m.

Disney's Oceaneer Lab: 2:00 p.m. - 4:00 p.m.
Disney's Oceaneer Club: 9:00 a.m. - 10:30 a.m.

MORE TO ENJOY WHILE ONBOARD



EASTERN, WESTERN OR SOUTHERN CARIBBEAN

Set your compass for the Caribbean in 2014! Disney Cruise Line offers a variety of 7-night sailings to exotic ports in the Eastern, Western or Southern Caribbean. Visit the Onboard Sales Desk to learn more about our special onboard booking offer.



DISNEY VACATION CLUB® GROUP PREVIEW

Want to learn more about taking magical vacations year after year? Please see a Disney Vacation Club representative on Deck 4, Midship, or call 7-2805 from your stateroom phone for more information about our interactive group presentation.

EXPRESS WALK OFF

This option allows you to take your luggage off the ship at your leisure once the ship has been cleared by the local authorities. You won't need to wait for your luggage to enter the terminal and there is no need to claim it inside the terminal building. Please note that no assistance with luggage is provided for this option.

EXPRESS CHECK OUT

If you have a credit card on file, you qualify for express check out. No need to visit Guest Services to settle your account.

QUARTER MASTERS ARCADE

Where can you fly a fighter jet, save a Princess, race NASCAR's greatest and beat bad guys all before dinner? Quarter Masters is on Deck 9, Midship, where the champions play.

Connect@Sea

We are now offering a NEW and improved Internet service to stay connected on your cruise like no other in the industry! Internet packages range from \$0.25 per MB - \$89.00 (1000 MB package). For more information contact your Connect@Sea Expert or Guest Services onboard.



GO-SMILE

Your smile is the outward expression of your inner beauty. A beaming smile makes you look younger, more radiant and confident. Are you ready to Smile? Then try our advanced Go-Smile teeth whitening treatment. It's a safe and effective way to take your smile from dull to dazzling in just 30 minutes.

\$149 per person \$258 for couples

Deck 9, Forward - Phone : 7-1465

SOPHIA FIORI

Industry leaders in vivid colored diamonds, and more specifically Caribbean blue diamonds - one of the single most popular purchases at sea because it reminds everyone of the colors of the breathtaking ocean!

WHITE CAPS

Deck 4, Forward

Sophia Fiori



SHOPPING

OFFICER PIN TRADING

Make your way to Preludes at 7:15 p.m. and join the Officers of the Disney Magic® Cruise Ship for pin trading. Deck 4, Forward.

SOPHIA FIORI GUESS THE CARAT WEIGHT & WIN!

Guess the Carat Weight of one of our exquisite Sophia Fiori diamond rings. Whoever guesses closest wins a 5-carat Midnight Sapphire! Winners draw at 7:30 pm. Must be present to win! White Caps, Deck 4, Forward. This offer is not affiliated with Disney Cruise Line.

STYLISH WATCHES ONBOARD

Whether you need a tool for strict timekeeping or a fun fashion accessory, visit White Caps and browse the wide selection of stylish watches available including popular brands such as Ernst Benz and Shinola. Deck 4, Forward.

GREAT OFFERS WHEN YOU SHOP ONBOARD

Stop by White Caps, Deck 4 Forward, and receive a Disney Cruise Line® Pillow for \$16.95 with any merchandise purchase of \$30.00 or more and/or a Disney Cruise Line® Throw for \$24.95 with any merchandise purchase of \$40.00 or more. While supplies last. Offer not valid on previous purchases. Offer subject to change without notice.

CAPTAIN'S SIGNING

Don't miss your chance to meet the Master of the Disney Magic! Stop by White Caps today at 12:15 p.m. where you can have your cruise mementos signed by our Captain. Deck 4, Forward.

SILENT ART AUCTION

Original inkings, line art, lithographs or will it be prints? Make sure you stop by the art gallery to see which pieces are up for silent auction today! The silent auction will take place from 11:00 a.m. to 2:00 p.m. Art Gallery, Deck 4, Midship.



GET THE PICTURE!

Your professional cruise photos all inclusive packages*
Unlimited digital files or unlimited prints - \$229.95
Unlimited digital files plus unlimited prints - \$279.95

*Offer available per stateroom; terms and conditions apply

DM1803 04-03-2014 ©DISNEY

IMPORTANT INFORMATION

Security Notice

All Guests (including Children) who wish to disembark or embark the ship are required to present their Key to the World card at the gangway. A photo ID is also required for those Guests who are 18 years of age or older. Guests under the age of 18 are required to have a parent, guardian or other responsible adult sign an authorization form at the Guest Service Desk if they wish to go ashore unaccompanied or with any adult from another stateroom.

Sunscreen/Insect Repellent Advisory

Use sunscreen first and protect against mosquito borne illnesses by applying insect repellent on top of sunscreen when going ashore.

Cold and Flu Reminder

Please wash hands frequently and thoroughly, particularly before meals. Contact the Health Center by dialing 7-1923, should anyone in your party become ill.

Inclement Weather

For the safety of all Guests, outdoor events may be changed due to unforeseen weather conditions.

Corridor Quiet Hours

As a courtesy to all our Guests, please recognize quiet hallway hours from 10:00 p.m. til 8:00 a.m.

Environmental Message

With Disney's commitment to the Environment please refrain from throwing anything over the Ship's side. Thank you.

No Reserved Seats Policy

As a courtesy to all Guests we kindly advise that the saving of seats is not permitted in the Walt Disney Theatre, and the saving of the sun loungers is not permitted on Deck 9 and 10. Items left unattended will be returned to lost and found at Guest Services, Deck 3, Midship.

Smoking

For the comfort of our guests, the following areas are designated as smoking areas:
• Deck 10 Forward, Starboard Side
• Deck 9, Forward, Starboard Side at Quiet Cove
• Deck 4, Starboard Side from 6:00 p.m. to 6:00 a.m. only (all of Deck 4 is non-smoking from 6:00 a.m. to 6:00 p.m.)
Smoking is prohibited inside all guest staterooms and on stateroom verandahs. Guests found smoking in their staterooms or on their verandahs will be charged a \$250 stateroom recovery fee.

Walt Disney Theatre

Theatrical performances may use artificial fog, strobe lights, pyrotechnics and other special effects. For the safety of our performers and the comfort of those around you, the use of any photography or video recording device or any electronic equipment is prohibited.

Verandah Safety

Please do not leave any combustible materials on your balcony when not present in your stateroom for safety reasons.

Morning	8:30	8:45	9:00	9:15	9:30	9:45	10:00	10:15	10:30	10:45	11:00	11:15	11:30	11:45	12:00	12:15	12:30	12:45	1:00	1:15	1:30
FUNNEL VISION	Aladdin (G) Funnel Vision						Toy Story 3 (G) Funnel Vision						Jam Fest at Sea Funnel Vision						Ice Carving Funnel Vision		
BUENA VISTA THEATRE	Muppets Most Wanted (PG) Duration: 1 Hour 52 Minutes						Frozen (PG) DOLBY 3D Duration: 1 Hour 48 Minutes						Need for Speed (PG-13) DOLBY 3D Duration: 2 Hours 10 Minutes								
CHARACTERS	Princess Gathering Lobby Atrium						Peter Pan Dk 4, Mid						Captain America Preludes						Character Dance Party Lobby Atrium		
FUN FOR ALL AGES	Disney Junior D Lounge						Family Crafts D Lounge						Animation - Donald Duck Promenade Lounge						Bingo Pre Sales BINGO Fathoms		
	Become Iron Man! Iron Man Disney's Oceaneer Club						Mouseketeer Training Mouseketeer Disney's Oceaneer Club						Crafts: Door Hangers Promenade Lounge						Disney Trivia Promenade Lounge		
ADULTS	Friends of Bill W. Animator's Palate						Wake Up & Stretch Class Senses Spa & Salon						Movie Quotes Trivia O'Gills Pub						Napkin Folding D Lounge		
	Art of The Theme Show Tour Palo						Group Cycling Senses Spa & Salon						Singles' Brunch Lumiere's						Club 18*21 - Brunch Lumiere's		
VIBE 14-17 YEARS OLD							Youth Activities Open House Open House						GOTCHA						Animation Cells		
EDGE 11-14 YEARS OLD							Youth Activities Open House Open House						Goofy's World Records						Animation Cells		
OCEANEER LAB 3-12 YEARS OLD	Goofy Files Goofy Files						Super Sloppy Science Super Sloppy Science						Oceaneer Rangers Oceaneer Rangers						Lunch		
OCEANEER CLUB 3-12 YEARS OLD	Youth Activities Open House Open House						Stitch's Great Adventure Stitch's Great Adventure						Aladdin's Fun Adventures Aladdin's Fun Adventures						Lunch		

Afternoon	1:45	2:00	2:15	2:30	2:45	3:00	3:15	3:30	3:45	4:00	4:15	4:30	4:45	5:00	5:15	5:30	5:45	6:00	6:15	6:30	6:45
FUNNEL VISION	WALL-E (G) Funnel Vision						Tangled (PG) Funnel Vision						The Princess and the Frog (G) Funnel Vision								
BUENA VISTA THEATRE							Saving Mr. Banks (PG-13) Duration: 2 Hours 5 Minutes						Planes (PG) Duration: 1 Hour 32 Minutes								
CHARACTERS	Pluto Gazebo, Dk 9						Goofy Gazebo, Dk 9						Daisy Lobby Atrium (S)						Mickey Lobby Atrium (S)		
FUN FOR ALL AGES	MUPPETS MOST WANTED Rated - (PG) - 1 hr 52 min (Doors open at 1:30 p.m.)						Bingo Pre Sales						FINAL Jackpot BINGO Fathoms						Friendship Rocks Walt Disney Theatre		
	Towel Folding Fathoms						Magic Quest Fathoms						Disney Tunes Trivia Promenade Lounge						Basketball Free Throw Wide World of Sports		
ADULTS	ESPN Dream Team Draft Day - Basketball O'Gills Pub						Disney's ANYONE CAN COOK D Lounge						Brainteasers Trivia O'Gills Pub						Art of The Theme Show Tour Palo		
													Singles' Mingle Cove Cafe						Club 18*21 Game Challenge O'Gills Pub		
VIBE 14-17 YEARS OLD	Zombified						Ice Cream Social						Dive into DJ'ing						Scavenger Hunt		
EDGE 11-14 YEARS OLD	Trivia Challenge						Ice Cream Social						Gender Wars						Youth Activities Open House Open House		
OCEANEER LAB 3-12 YEARS OLD	Lunch						Youth Activities Open House Open House						Piston Cup Challenge Piston Cup Challenge						Friendship Rocks Prep Friendship Rocks Prep		
OCEANEER CLUB 3-12 YEARS OLD							The Royal Ball The Royal Ball						Friendship Rocks Prep Friendship Rocks Prep						Friendship Rocks		

Evening	7:00	7:15	7:30	7:45	8:00	8:15	8:30	8:45	9:00	9:15	9:30	9:45	10:00	10:15	10:30	10:45	11:00	11:15	11:30	11:45	12:00
FUNNEL VISION	The Incredibles (PG) Funnel Vision						The Avengers (PG-13) Funnel Vision														
BUENA VISTA THEATRE							Planes (PG) Duration: 1 Hour 32 Minutes						Frozen (PG) Duration: 1 Hour 48 Minutes								
CHARACTERS	Mickey Lobby Atrium (S)						Minnie Lobby Atrium (S)						Captain America Preludes								
FUN FOR ALL AGES	Officer Pin Trading Preludes						Magic Workshop (6+) Fathoms						DREAMS Walt Disney Theatre						Farewell Karaoke D Lounge		
	Family Dance Party Promenade Lounge						So You Think You Know Your Family? D Lounge						Infusion Duo LIVE Promenade Lounge						Live Music with Infusion Duo Promenade Lounge		
ADULTS	80's Music Trivia O'Gills Pub						Wii Challenge O'Gills Pub						Live Music with Dream Fathoms						Adult Variety: Scott Pepper Fathoms		
	A Glimpse of Broadway Keys												Live Piano with Aileen de la Cruz Keys						Club DJ 4FRONT Fathoms		
VIBE 14-17 YEARS OLD	Youth Activities Open House Open House						Smoothie Hour						Pump It Up						Zombified Premiere		
EDGE 11-14 YEARS OLD	Soccer						Anyone Can Cook						Talent Show						How Well Do You Know Your Counselor?		
OCEANEER LAB 3-12 YEARS OLD	Monstropolis Most Wanted Monstropolis Most Wanted						Animation Cells Animation Cells						Super Sloppy Science Super Sloppy Science								
OCEANEER CLUB 3-12 YEARS OLD	Marvel Avengers Academy Marvel Avengers Academy												Toy Story Boot Camp Toy Story Boot Camp								

Symbol for activities that will be repeated during the cruise



FOLD

Fold along the dotted lines and take me with you so you don't miss any of the fun!

FOLD

IN THE SPOTLIGHT SERIES

CREATE & INVENT SERIES

JUMP UP! SERIES

CLUBHOUSE SERIES

STORYBOOK SERIES

THURSDAY, APRIL 3, 2014 - DAY AT SEA

BUENA VISTA THEATRE

Deck 5, Aft

DOLBY 3D DOLBY 3D



8:30 a.m. Duration: 1 hr 52 mins Rating: PG	10:45 a.m. Duration: 1 hr 48 mins Rating: PG	1:00 p.m. Duration: 2 hrs 10 mins Rating: PG-13	3:30 p.m. Duration: 2 hrs 5 mins Rating: PG-13	6:00 p.m. & 8:15 p.m. Duration: 1 hr 32 mins Rating: PG	10:45 p.m. Duration: 1 hr 48 mins Rating: PG
---	--	---	--	---	--

Character Appearances

PRINCESS GATHERING

Lobby Atrium - 9:00 a.m.

JAKE - THE NEVERLAND PIRATE

Deck 4, Midship - 9:15 a.m.

CAPTAIN AMERICA

Preludes - 9:30 a.m., 11:00 a.m. & 11:15 p.m.

STITCH

Deck 4, Midship - 9:45 a.m.

PETER PAN

Deck 4, Midship - 10:15 a.m.

CAPTAIN HOOK

Deck 4, Midship - 10:45 a.m.

CHARACTER DANCE PARTY

Lobby Atrium - 12:15 p.m.

PLUTO

Gazebo, Dk 9 - 2:30 p.m.

GOOFY

Gazebo, Dk 9 - 3:00 p.m.

DONALD DUCK

Gazebo, Deck 9 - 3:30 p.m.
Lobby Atrium (S) - 5:00 p.m.

CHIP & DALE

Gazebo, Deck 9 - 4:00 p.m.

DAISY DUCK

Lobby Atrium (S) - 4:30 p.m.

MICKEY MOUSE

Lobby Atrium (S)
5:30 p.m. & 7:45 p.m.

MINNIE MOUSE

Lobby Atrium (S)
6:00 p.m. & 8:15 p.m.

BELLE

Deck 4, Midship - 7:15 p.m.

TIL WE MEET AGAIN

Lobby Atrium - 10:00 p.m.



(P) - Portside, (S) - Starboard Side

Don't forget your Camera to capture those Magical Moments!

Check here each day for Character appearances.

For detailed Character appearance information see the Character Information Board in the Lobby Atrium.

Meet-and-Greets will be advertised for the length of time the line will be open. To avoid disappointment, please meet at start time of appearances.

YOUTH ACTIVITIES THEMED EXPERIENCES

CLUBHOUSE SERIES
focuses on movement and features content which appeals to younger children.

STORYBOOK SERIES
is designed with a strong connection to the Disney classic stories.

JUMP UP! SERIES
includes large group games & movement-oriented activities.

CREATE & INVENT SERIES
will have a tactile focus allowing children to create and admire their work.

IN THE SPOTLIGHT SERIES
focuses on children's stage presence with lots of activities and enthusiasm.

SOLVE IT! SERIES
are less active, but will challenge children with problem/solutions-based activities.

YOUTH ACTIVITIES OPEN HOUSE

Activities for families, adults and children of all ages to enjoy together.

SHIP DIRECTORY

YOUTH ACTIVITIES

DISNEY'S OCEANEER CLUB	DECK 5, MID	9:00 AM - 12:00 MID
DISNEY'S OCEANEER LAB	DECK 5, MID	9:00 AM - 12:00 MID
EDGE	DECK 2, MID	10:00 AM - 12:00 MID
IT'S A SMALL WORLD NURSERY	DECK 5, AFT	8:00 AM - 11:30 PM
VIBE	DECK 10, MID	10:00 AM - 1:00 AM

POOLS

*Children under 12 years of age must have adult supervision in all pools.

AQUADUNK	DECK 10, MID	10:00 AM - 9:00 PM
AQUALAB	DECK 9, AFT	9:00 AM - 9:00 PM
GOOFY'S POOL	DECK 9, MID	9:00 AM - 6:00 PM 8:00 PM - 10:00 PM
NEPHEWS' SPLASH ZONE	DECK 9, AFT	9:00 AM - 6:00 PM
QUIET COVE POOL (18+)	DECK 9, FWD	6:00 AM - 12:00 MID
TWIST 'N' SPOUT	DECK 9, AFT	10:00 AM - 9:00 PM

RECREATION

PORT ADVENTURES DESK	DECK 3, MID	7:00 PM - 8:30 PM
SENSES FITNESS CENTER (18+)	DECK 9, FWD	8:00 AM - 10:00 PM
WIDE WORLD OF SPORTS DECK	DECK 10, FWD	24 HOURS

GENERAL INFORMATION

BUENA VISTA THEATRE	DECK 5, AFT	SHOWTIMES
DISNEY VACATION CLUB DESK	DECK 4, MID	9:00 AM - 12:00 PM 2:30 PM - 10:00 PM
ONBOARD SALES DESK	DECK 4, MID	9:30 AM - 10:45 AM 11:15 AM - 12:00 PM 3:00 PM - 6:00 PM 7:30 PM - 10:30 PM
FUNNEL VISION	DECK 9, MID	SHOWTIMES
GUEST SERVICES	DECK 3, MID	24 HOURS
HAIR BRAIDING	DECK 9, MID	8:30 AM - 8:30 PM
MEDICAL HEALTH CENTER	DECK 1, FWD	9:30 AM - 11:00 AM 4:30 PM - 7:00 PM
PORT & SHOPPING DESK	DECK 3, MID	7:30 PM - 8:30 PM
PRELUDES	DECK 4, FWD	5:30 PM - 9:00 PM
QUARTER MASTERS (ARCADE)	DECK 9, MID	24 HOURS
SENSES SPA AND SALON	DECK 9, FWD	6:30 AM - 10:00 PM
SHUTTERS PHOTO GALLERY	DECK 4, AFT	10:00 AM - 11:00 PM
WALT DISNEY THEATRE	DECK 4, FWD	SHOWTIMES

SHOPPING

MICKEY'S MAINSAIL	DECK 4, FWD	9:30 AM - 12:00 MID
QUACKS	DECK 9, MID	10:00 AM - 4:00 PM
SEA TREASURES	DECK 3, FWD	12:00 PM - 11:00 PM
VISTA GALLERY	DECK 4, MID	11:00 AM - 2:00 PM 4:00 PM - 10:00 PM
WHITE CAPS	DECK 4, FWD	9:30 AM - 12:00 MID

IMPORTANT NUMBERS

Fire/Security: 7-3001
Medical EMERGENCY: 7-3000
Health Center: 7-1923

DINNER MENU	Animator's Palate: Show Dinner	DRINK OF THE DAY	High Tide (Alcoholic)	WEATHER FORECAST	Today: Partly Sunny
	Carioca's: South American Dinner		Purple Basil Lemonade (Non - Alcoholic)		High: 74°F/23°C
	Lumière's: French Dinner				Tomorrow: Partly Sunny
Dining Times: 5:45pm & 8:15pm		Evening Attire: Cruise Casual		High: 76°F/24°C	

DINING & LOUNGES

BREAKFAST

CABANAS	DECK 9, AFT	7:30 AM - 11:30 AM
DAISY'S DE LITES	DECK 9, AFT	7:00 AM - 9:00 AM
LUMIÈRE'S BRUNCH	DECK 3, MID	9:00 AM - 12:30 PM

LUNCH

CABANAS	DECK 9, AFT	11:30 AM - 3:00 PM
DAISY'S DE LITES	DECK 9, AFT	11:00 AM - 6:00 PM
LUMIÈRE'S BRUNCH	DECK 3, MID	9:00 AM - 12:30 PM
PETE'S BOILER BITES	DECK 9, AFT	11:00 AM - 6:00 PM
PINOCCHIO'S PIZZERIA	DECK 9, MID	11:00 AM - 6:00 PM

DINNER

ANIMATOR'S PALATE	DECK 4, AFT	5:45 PM & 8:15 PM
CARIOCA'S	DECK 3, AFT	5:45 PM & 8:15 PM
LUMIÈRE'S	DECK 3, MID	5:45 PM & 8:15 PM
PALO (FOR RESERVATIONS CALL 7-6843)	DECK 10, AFT	6:00 PM - 8:30 PM
PETE'S BOILER BITES	DECK 9, AFT	6:00 PM - 10:00 PM

LATE NIGHT SNACKS

O'GILLS PUB	DECK 3, FWD	10:45 PM - 11:45 PM
PINOCCHIO'S PIZZERIA	DECK 9, MID	9:30 PM - 12:00 MID
PROMENADE LOUNGE	DECK 3, AFT	10:45 PM - 11:45 PM

ADDED FEATURES

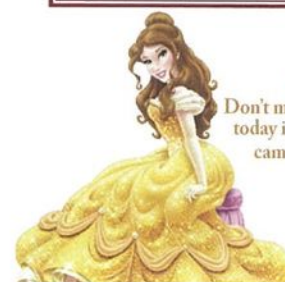
EYE SCREAM	DECK 9, AFT	11:00 AM - 11:00 PM
BEVERAGE STATION	DECK 9, AFT	24 HOURS
ROOM SERVICE	DIAL 7-4330	CLOSES AT 1:00 AM.

ENTERTAINMENT - LOUNGES - BARS

Adults must be 21 and older to consume alcoholic beverages.

AFTER HOURS	DECK 3, FWD	(AFTER 9:00 PM. ADULTS ONLY)
COVE CAFE (18+)	DECK 9, MID	7:00 AM - 12:00 MID
D LOUNGE	DECK 4, MID	SHOWTIMES
FATHOMS (18+)	DECK 3, FWD	7:00 PM - 2:00 AM
FROZONE TREATS	DECK 9, AFT	10:30 AM - 8:00 PM
INTERNET CAFE	DECK 3, AFT	24 HOURS
KEYS (18+)	DECK 3, FWD	5:30 PM - 12:30 AM
O'GILLS PUB (18+)	DECK 3, FWD	12:00 PM - 12:30 AM
PRELUDES	DECK 4, FWD	5:30 PM - 9:00 PM
PROMENADE LOUNGE	DECK 3, AFT	9:00 AM - 12:00 MID
PINOCCHIO'S PIZZERIA	DECK 9, MID	9:00 AM - 12:00 MID
SIGNALS (18+)	DECK 9, FWD	9:30 AM - 10:30 PM

Public Health Advisory: Consuming raw or undercooked meats, poultry, seafood, shellfish, or eggs may increase your risk for foodborne illness, especially if you have certain medical condition.



PRINCESS GATHERING

Don't miss your chance to see this Royal gathering today in the Lobby Atrium and don't forget your camera to capture those magical moments.

9:00 a.m.