

PERSONAL NAVIGATOR

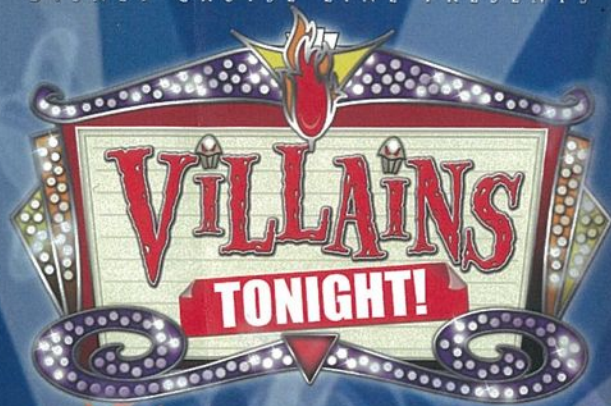
MONDAY, MARCH 31, 2014

Sunrise: 7:14 a.m. Sunset: 7:40 p.m.
Evening Attire: Cruise Casual
All Aboard: 4:00 p.m.

Today: Sunny High: 68°F/20°C
Tomorrow: Partly Sunny High: 72°F/22°C

PORT CANAVERAL, FLORIDA

DISNEY CRUISE LINE PRESENTS



WALT DISNEY THEATRE

Deck 4, Forward,
6:15 p.m. & 8:30 p.m.

As a courtesy to all Guests, we kindly advise that the saving of seats is **not** permitted in the Walt Disney Theatre.



Assistance available at the entrance to the Walt Disney Theatre 30 minutes prior to show time.

Welcome Aboard!

Your Stateroom and Luggage

Staterooms will be ready at 1:30 p.m. To allow stateroom hosts to prepare your room, please do not remove the blue stanchion straps. Stateroom hosts will deliver luggage throughout the day until 5:30 p.m.

Staterooms with Bunk Beds

Bunk beds are recessed into the ceiling and will be prepared during evening turndown service by your Stateroom Host/ess.

Stateroom Safe

Each stateroom is equipped with a secured storage safe. Instructions for use are located on the safe.

To Change Dining Assignment

Requests for different seating times will be taken today:
> 12:30 p.m. - 3:30 p.m., Lumiere's, Deck 3, Midship.
Please call 7-1831 and leave a voicemail.

Palo Dining Reservations:

Are required and will be taken on a first come basis today at:
> 12:30 p.m. - 3:30 p.m., Palo, Deck 10, Aft.
Please call 7-6843 and leave a voicemail.

Beverage Seminar Reservations:

> 12:30 p.m. - 3:30 p.m., Promenade Lounge, Deck 3, Aft.

Dinner

5:45 p.m. - First Seating
8:15 p.m. - Second Seating

Please check your dining tickets for details of your dining rotation, and bring them to your specific dining location. There is no need to wait in line prior to dinner. Dining Rooms open at designated seating times and your table is reserved each night of your cruise.



ADVENTURES AWAY

Earn your status as V.I.P. sailors! Join your Cruise Director, Brent, your Disney pals and your Cruise Staff as we officially begin your "Adventures Away."

4:30 p.m.,
Deck Stage,
Deck 9, Midship

Don't Miss:

Walking Ship Tour

Preludes, Deck 4, Forward - 1:45 p.m. & 2:30 p.m.

Enjoy the beauty of the Disney Magic® with your Cruise Staff in this guided tour.

Mickey Mania

D Lounge, Deck 4, Midship - 7:30 p.m. & 9:45 p.m.

Join us for the ultimate test of your Disney knowledge as we play our live, interactive game show, that's "insania!"

Magic Quest (18+)

Fathoms, Deck 3, Forward - 10:15 p.m.

Enjoy the wildest and wackiest scavenger team event on the seven seas!

Match Your Mate (18+)

Fathoms, Deck 3, Forward - 10:45 p.m.

It's time to play everyone's favorite couples game show - Match Your Mate!

Disney CRUISE LINE.

PORT  ADVENTURES

Stop by the Port Adventures Desk, located on Deck 3, Midship, where our friendly team will assist you to plan your adventure to our ports of call!

DINNER MENU

Animator's Palate: Show Dinner
Carioca's: South American Dinner
Lumiere's: French Dinner

DRINK OF THE DAY

Paradise Punch (Alcoholic)
Lava Smoothie (Non Alcoholic)

IMPORTANT NUMBERS

Fire/Security: 7-3001
Medical Emergency: 7-3000
Health Center: 7-1923

ADULT ACTIVITY HIGHLIGHTS



FITNESS CLASSES

Senses Spa and Salon has a variety of seminars and fitness classes available throughout the cruise.

BEVERAGE SEMINARS

Your Beverage team has a host of tastings and seminars to entertain and educate you. Pre-book these experiences at Guest Services, Deck 3, Midship (nominal fee applies).

Mixology - Wine Tasting - Martini Tasting - Tequila & Margarita Tasting
Beer Tasting - Cognac Tasting - Whisky Tasting - Wine & Chocolate Tasting

ART OF THE THEME SHOW TOUR

18+ Meet at Palo, Deck 10, Aft - Pre-Book at Guest Services

Scheduled throughout your cruise.

Join us on a guided ship tour and discover the key ingredients that make the Disney Magic one-of-a-kind. Pre-book at Guest Services, Deck 3, Midship.

CLUB
18*21

CLUB 18*21 - ICE BREAKER

O'Gills Pub, Deck 3, Forward - 10:00 p.m.

Club 18*21 is an exclusive gathering for young adult Guests. Come meet fellow cruisers and learn about the great activities Disney has to offer to help create the perfect cruise experience.

Cruise Itinerary

Monday

PORT CANAVERAL
Port Departure: 5:00 p.m.
All Aboard: 4:00 p.m.
Attire: Cruise Casual

VILLAINS TONIGHT!
Walt Disney Theatre
6:15 p.m. & 8:30 p.m.

Tuesday

NASSAU
All Ashore: 9:30 a.m.
All Aboard: 5:45 p.m.
Attire: Optional Dress Up

TWICE CHARMED
Walt Disney Theatre
6:15 p.m. & 8:30 p.m.

Wednesday

DISNEY'S CASTAWAY CAY
All Ashore: 8:30 a.m.
All Aboard: 5:00 p.m.
Attire: Pirate or Cruise Casual

SHOWTIME:
SCOTT PEPPER
Walt Disney Theatre
6:15 p.m. & 8:30 p.m.

Thursday

DAY AT SEA
Attire: Cruise Casual

DISNEY DREAMS:
AN ENCHANTED CLASSIC
Walt Disney Theatre
6:15 p.m. & 8:30 p.m.

Subject to change.

FUN FOR ALL AGES HIGHLIGHTS



RUNDISNEY: CASTAWAY CAY 5K REGISTRATION (10+)

Pre-Book at Guest Services or the Port Adventures Desk, Deck 3, Midship. Sign up today for the runDisney: Castaway Cay 5K! Please visit the Port Adventures Desk or the Guest Services Desk to register at anytime prior to our arrival at Disney's Castaway Cay. Please note that runners must be 10 years of age or older to participate.



BIG X \$500 MEGA JACKPOT BINGO

Fathoms, Deck 3, Forward - 7:45 p.m. (Pre Sales at 7:30 p.m.) Four CASH prizes to be won! Walk home with \$500 should you cover the Big X pattern in 20 numbers or less on the fourth game.



SALUDOS AMIGOS FIESTA

D Lounge, Deck 4, Midship - 10:15 p.m.

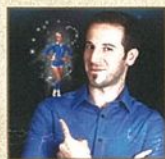
Come see what Donald and his friends are up to this time. Bring the family out to this interactive dance party featuring fun Latin music! Your family will learn to Salsa, Merengue and just have a Latin good time!

FAMILY SUPERSTAR KARAOKE

D Lounge, Deck 4, Midship - 10:45 p.m.

Join your Cruise Staff in D Lounge tonight and sing along to your favorite song - fun for everyone.

FEATURED VARIETY ACT THIS VOYAGE



THE MAGIC & ILLUSION OF SCOTT PEPPER

Scott Pepper has been a magician for over 16 years. He started out his career in magic not unlike other magicians with a magic set for his 9th birthday. When Scott turned 10 he performed his first show as part of a talent competition. He went on to reach the national finals of the competition and since then he hasn't looked back.



CLUB DJ 4FRONT

DJ 4Front is a world class LA based DJ/Producer and has shared the stage with artists such as LMFAO, Far East Movement, Hyper Crush and many more. His ability to go from genre to genre seamlessly has allowed him to remain on the "forefront" of this always evolving industry. Being a premium Disneyland pass holder, you can find 4Front at the park a few times a month and his favorite ride is Space Mountain.



YOUTH ACTIVITIES HIGHLIGHTS



Deck 5, Midship (7-5864) 12:30 p.m. - 3:30 p.m.
5:00 p.m. - 11:30 p.m.
Infants and Toddlers can enjoy toys and activities at It's a Small World Nursery. Reservations are first come, first served so please stop by!



Deck 5, Midship (7-1440)
(3 - 12 years old)
12:30 p.m. - 3:30 p.m.
5:00 p.m. - 12:00 mid



Deck 5, Midship (7-1445)
(3 - 12 years old)
12:30 p.m. - 3:30 p.m.
5:00 p.m. - 12:00 mid

REGISTRATION FOR 3 - 12 YEAR OLDS

Meet the Youth Activities Team in Disney's Oceaneer Lab and Disney's Oceaneer Club, complete your registration & learn all about the Themed Experiences this cruise!

CLUBHOUSE SERIES - The Clubhouse Themed Experiences focus on movement and feature content which appeals to younger children. *Recommended for children seven years and younger.*

STORYBOOK SERIES - The Storybook Series Themed Experiences are designed with a strong connection to the Disney classic stories. *Recommended for children seven years and younger.*

JUMP UP! SERIES - The Jump Up! Themed Experiences will include large ground games & movement-oriented activities.

CREATE & INVENT SERIES - The Create & Invent Themed Experiences will have a tactile focus allowing children to create and admire their work.

IN THE SPOTLIGHT SERIES - The In The Spotlight Themed Experiences focus on children's stage presence with lots of activities and enthusiasm. *Recommended for children seven years and older.*

SOLVE IT! SERIES - The Solve It! Themed Experiences are less active, but will challenge children with problem/solutions-based activities. *Recommended for children seven years and older.*

YOUTH ACTIVITIES OPEN HOUSE - Activities for families, adults and children of all ages to enjoy together.

DINE & PLAY

As a convenience for families dining at 8:15 p.m., our Youth Activities Counselors will be available at 9:15 p.m. at the entrance of Lumiere's and Carioca's and 9:30 p.m. at Animator's Palate to bring registered children to join the fun in Disney's Oceaneer Club and Disney's Oceaneer Lab.

Youth Activities Open House

Open House is an opportunity for all to come and participate in a variety of exciting activities and free time in It's a Small World Nursery, Disney's Oceaneer Club, Disney's Oceaneer Lab, Edge and Vibe throughout the cruise. During these times secured programming will still be offered in the other venue for those looking to check their children into care.

Deck 2, Midship (7-5810) 12:30 p.m. - 3:30 p.m.
(11 - 14 years old) 5:00 p.m. - 12:00 mid



(11 - 14 YEAR OLDS)

Edge is an interactive play space where tweens can play video games, watch television and participate in arts and crafts with kids their own age.

ICE BREAKERS

10:45 p.m.

Fancy some fun? Want to get to know your fellow guests? Then join us as we break the ice in this fun filled game show



Deck 10, Midship (7-1456) 12:30 p.m. - 3:30 p.m.
(14 - 17 years old) 5:00 p.m. - 1:00 a.m.

THE DOWNLOAD

10:30 p.m.

Come up to Vibe and help plan all the fun activities you will be doing this cruise with your new friends!

BUENA VISTA THEATRE

Deck 5, Aft
Feature Movies this Voyage

MONDAY - PORT CANAVERAL

5:45 p.m.	PG	Frozen: Sing-A-Long	DOLBY.3D
8:00 p.m.	PG	Frozen: Sing-A-Long	
10:15 p.m.	PG	Planes	

TUESDAY - NASSAU

8:30 a.m.	PG	Muppets Most Wanted	DOLBY.3D
10:45 a.m.	PG	Frozen	
1:00 p.m.	PG	Muppets Most Wanted	
3:30 p.m.	PG	Frozen	DOLBY.3D
5:45 p.m.	PG	Muppets Most Wanted	
8:15 p.m.	PG	Muppets Most Wanted	
10:30 p.m.	PG-13	Saving Mr. Banks	

WEDNESDAY - DISNEY'S CASTAWAY CAY

8:30 a.m.	PG	Frozen	Open Captioning
2:30 p.m.	PG-13	Need for Speed	
5:15 p.m.	PG-13	Saving Mr. Banks	DOLBY.3D
7:45 p.m.	PG-13	Saving Mr. Banks	
11:00 p.m.	PG-13	Need for Speed	

THURSDAY - DAY AT SEA

8:30 a.m.	PG	Muppets Most Wanted	DOLBY.3D
10:45 a.m.	PG	Frozen	
1:00 p.m.	PG-13	Need for Speed	DOLBY.3D
3:30 p.m.	PG-13	Saving Mr. Banks	
6:00 p.m.	PG	Planes	DOLBY.3D
8:15 p.m.	PG	Planes	
10:45 p.m.	PG	Frozen	

Subject to change.



GAME SHOW

Put your Disney knowledge to the ultimate test, or play along from our live studio audience!

D Lounge,
Deck 4, Midship,
7:30 p.m. & 9:45 p.m.



GAME SHOW

It's time to play everyone's favorite couple's game show - Match your Mate!

Fathoms (18+),
Deck 3, Forward,
10:45 p.m.

MORE TO ENJOY WHILE ONBOARD

NEW IN 2014!



The choice is yours! Set sail for the Southern Caribbean from fabulous San Juan, Puerto Rico. Journey to Alaska and explore historic Sitka. Visit the Greek Isles and Venice. Begin your exploration today! Stop by the Onboard Sales Desk and ask about our special onboard booking offer.



DISNEY VACATION CLUB® MEMBERS CELEBRATION

Members! Mix and mingle with other Members and learn how you can enhance your Membership! Please see a Disney Vacation Club representative on Deck 4, Midship, or call 7-2805 from your stateroom phone for more information.

PORT & SHOPPING INFORMATION

Port and Shopping Talk at 2:45 p.m. in the Buena Vista Theatre. Learn about the incredible shopping in Nassau! Everything will be covered from Diamonds to T-Shirts, Watches to Tanzanite. A free Charm Bracelet and chance to win a Diamond Pendant for all in attendance! Port & Shopping Desk, Deck 3, Midship – Stop by between 6:30 p.m. – 8:30 p.m. to meet Alyssa your Port Shopping Guide. Pick up your savings ashore coupon book and shopping VIP Coupon Cards.



ONBOARD AIRLINE CHECK IN

Stop by the Guest Services Desk, Deck 3, Midship to find out about enrolling in our Onboard Airline Check In Service.

QUARTER MASTERS ARCADE

Where can you fly a fighter jet, save a Princess, race NASCAR's greatest and beat bad guys all before dinner? Quarter Masters is on Deck 9, Midship, where the champions play.

Connect@Sea

We are now offering a NEW and improved Internet service to stay connected on your cruise like no other in the industry! Internet packages range from \$0.25 per MB - \$89.00 (1000 MB package). For more information contact your Connect@Sea Expert or Guest Services onboard.

Disney Cruise Line. PORT ADVENTURES

Our Port Adventures have been carefully selected to ensure you experience the best that our ports of call have to offer. Whether sailing the horizon, exploring an undersea world, relaxing on white sandy beaches or enjoying the luxury of a private vehicle, there is something for the entire family to enjoy!

Visit our friendly team at the
Port Adventures Desk, Deck 3, Midship.

SHOPPING

O'GILLS PUB MERCHANDISE

Visit Sea Treasures where you'll find our new collection of O'Gills Pub products including branded shirts. While at Sea Treasures, check out the new and fun label shirts featuring Grumpy, Pluto, and Steamboat Willie. Deck 3, Forward.

2014 DISNEY CRUISE LINE MERCHANDISE

Step into Mickey's Mainsail today and commemorate your Disney cruise with a wide selection of 2014 Disney Cruise Line merchandise. From t-shirts to photo albums and more, you are sure to find a special souvenir for the whole family. Deck 4, Forward.

NEW DISNEY CRUISE LINE COMPASS COLLECTION MERCHANDISE

Commemorate your Disney cruise with the new nautical themed Disney Cruise Line merchandise from the Compass collection. Step into White Caps, Deck 4 Forward, for the wide selection of Compass items including hats, t-shirts, and a fleece blanket.

RED CARPET SOPHIA FIORI DIAMOND UNVEILING

Drop in at White Caps today to meet the diamond specialist with Sophia Fiori. Whether you are a Hollywood celebrity or a full time Mom, every woman experiences a Red Carpet Moment when putting on Sophia Fiori Jewelry so treat yourself, you deserve it! Deck 4, Forward.

ROMERO BRITTO ART AT THE VISTA GALLERY

Visit the Vista Gallery today where you can admire the fun and colorful art pieces featuring some of your favorite Disney characters by celebrated artist, Romero Britto. From original canvas paintings to smaller print copies, the Vista Gallery offers the opportunity for you to take some of the magic home! Deck 4, Midship.

Due to port regulations, when the ship is docked, the stores will remain closed.



IONITHERMIE

Super Detox Treatments

Lose between 1 – 8 inches, speed up your metabolism, rid off puffiness, smooth your skin and firm your muscle without any pain of hard exercise
\$155 50min Treatment

Deck 9, Forward - Phone : 7-1465

SOPHIA FIORI DIAMOND UNVEILING

Sophia Fiori, Hollywood's first choice in diamonds has boarded the Disney Magic to premiere their new collection of white & colored diamonds at 7:30 p.m. this evening.

WHITE CAPS
Deck 4, Forward

Sophia Fiori



GET THE PICTURE!

Visit Shutters today and ask your friendly Shutters staff about the GET THE PICTURE! Unlimited digital package which includes all your stateroom photos on one photo disc. For best value, upgrade to include all printed photos, too! Visit Shutters on Deck 4, Aft for more information. Terms and conditions apply.

IMPORTANT INFORMATION

Security Notice

All Guests (including Children) who wish to disembark or embark the ship are required to present their Key to the World card at the gangway. A photo ID is also required for those Guests who are 18 years of age or older. Guests under the age of 18 are required to have a parent, guardian or other responsible adult sign an authorization form at the Guest Service Desk if they wish to go ashore unaccompanied or with any adult from another stateroom.

Sunscreen/Insect Repellent Advisory

Use sunscreen first and protect against mosquito borne illnesses by applying insect repellent on top of sunscreen when going ashore.

Cold and Flu Reminder

Please wash hands frequently and thoroughly, particularly before meals. Contact the Health Center by dialing 7-1923, should anyone in your party become ill.

Inclement Weather

For the safety of all Guests, outdoor events may be changed due to unforeseen weather conditions.

Corridor Quiet Hours

As a courtesy to all our Guests, please recognize quiet hallway hours from 10:00 p.m. til 8:00 a.m.

Environmental Message

With Disney's commitment to the Environment please refrain from throwing anything over the Ship's side. Thank you.

No Reserved Seats Policy

As a courtesy to all Guests we kindly advise that the saving of seats is not permitted in the Walt Disney Theatre, and the saving of the sun loungers is not permitted on Deck 9 and 10. Items left unattended will be returned to lost and found at Guest Services, Deck 3, Midship.

Smoking

For the comfort of our guests, the following areas are designated as smoking areas:

- Deck 10 Forward, Starboard Side
- Deck 9, Forward, Starboard Side at Quiet Cove
- Deck 4, Starboard Side from 6:00 p.m. to 6:00 a.m. only (all of Deck 4 is non-smoking from 6:00 a.m. to 6:00 p.m.)

Smoking is prohibited inside all guest staterooms and on stateroom verandahs. Guests found smoking in their staterooms or on their verandahs will be charged a \$250 stateroom recovery fee.

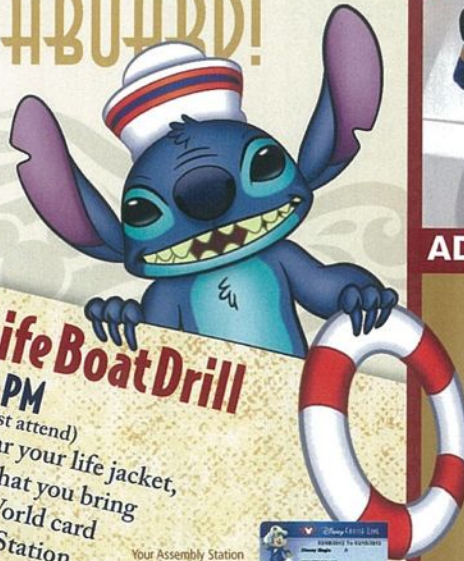
Walt Disney Theatre

Theatrical performances may use artificial fog, strobe lights, pyrotechnics and other special effects. For the safety of our performers and the comfort of those around you, the use of any photography or video recording device or any electronic equipment is prohibited.

Verandah Safety

Please do not leave any combustible materials on your balcony when not present in your stateroom for safety reasons.

A cartoon illustration of Goofy in a sailor outfit. He is wearing a white sailor's cap with a red band and a blue tassel. His shirt is red with white horizontal stripes and a white collar. He has a wide, happy smile, showing his teeth, and is waving with his right hand. The background is a light yellow with some faint, partially visible text like "Ma" and "You".



Earn your status as V.I.P. sailors! Join your Cruise Director, Brent, your Disney pals and your Cruise Staff as we officially begin your "Adventures Away."

Deck Stage,
Deck 9, Midship,
4:30 p.m.

Mandatory Life Boat Drill
4:00 PM
(All Guests must attend)
You will not be allowed to leave the ship during the drill.

4:00 PM
(All Guests must attend)
You will not need to wear your life jacket,
however it is critical that you bring
your Key To The World card
to your Assembly Station.
All ship services will be suspended
between 3:30 and 4:30 p.m.

Your Assembly Station
is indicated on your
Key To The World card.

Fold along the dotted lines and take me with you so you don't miss any of the fun!

Symbol for activities that will be repeated during the cruise

SOLVE IT! SERIES

CREATE & INVENT SERIES
OPEN HOUSE

STORYBOOK SERIES

MONDAY, MARCH 31, 2014 - PORT CANAVERAL, FLORIDA

BUENA VISTA THEATRE

Deck 5, Aft

DOLBY 3D



5:45 p.m. & 8:00 p.m.
Duration: 1 hr 48 mins
Rating: PG



10:15 p.m.
Duration: 1 hr 32 mins
Rating: PG

Character Appearances

ADVENTURES AWAY
Deck Stage - 4:30 p.m.

MINNIE MOUSE
Lobby Atrium (P) - 5:15 p.m.,
7:15 p.m. & 9:30 p.m.

MICKEY MOUSE
Lobby Atrium (P) - 5:45 p.m.,
7:45 p.m. & 10:00 p.m.

GOOFY
Deck 4, Midship
7:30 p.m. & 10:00 p.m.

CAPTAIN AMERICA
Preludes - 7:30 p.m. & 9:30 p.m.

DONALD DUCK
Deck 4, Midship - 9:30 p.m.



(P) - Port Side, (S) Starboard Side

Check here each day for Character appearances.

For detailed Character appearance information, see the Character Information Board in the Lobby Atrium.

Meet-and-Greets will be advertised for the length of time the line will be open. To avoid disappointment, please meet at start time of appearances.

YOUTH ACTIVITIES THEMED EXPERIENCES

CLUBHOUSE SERIES
focuses on movement and features content which appeals to younger children.

STORYBOOK SERIES
is designed with a strong connection to the Disney classic stories.

JUMP UP! SERIES
includes large group games & movement-oriented activities.

CREATE & INVENT SERIES
will have a tactile focus allowing children to create and admire their work.

IN THE SPOTLIGHT SERIES
focuses on children's stage presence with lots of activities and enthusiasm.

SOLVE IT! SERIES
are less active, but will challenge children with problem/solutions-based activities.

YOUTH ACTIVITIES OPEN HOUSE

A non-secured program with activities for families, adults and children of all ages to enjoy together.

SHIP DIRECTORY

YOUTH ACTIVITIES

DISNEY'S OCEANEER CLUB	DECK 5, MID	12:30 PM - 3:30 PM 5:00 PM - 12:00 MID
DISNEY'S OCEANEER LAB	DECK 5, MID	12:30 PM - 3:30 PM 5:00 PM - 12:00 MID
EDGE	DECK 2, MID	12:30 PM - 3:30 PM 5:00 PM - 12:00 MID
IT'S A SMALL WORLD NURSERY	DECK 5, AFT	12:30 PM - 3:30 PM 5:00 PM - 11:30 PM
VIBE	DECK 10, MID	12:30 PM - 3:30 PM 5:00 PM - 1:00 AM

POOLS

*Children under 12 years of age must have adult supervision in all pools.

AQUADUNK	DECK 10, MID	12:30 PM - 3:00 PM 6:00 PM - 8:00 PM
AQUALAB	DECK 9, AFT	12:00 PM - 3:30 PM 4:30 PM - 9:00 PM
GOOFY'S POOL	DECK 9, MID	12:00 PM - 3:30 PM 6:00 PM - 10:00 PM
NEPHEWS' SPLASH ZONE	DECK 9, AFT	12:00 PM - 3:30 PM 4:30 PM - 6:00 PM
QUIET COVE POOL (18+)	DECK 9, FWD	12:00 PM - 12:00 MID
WALT N' SPOUT	DECK 9, AFT	12:00 PM - 3:00 PM 4:30 PM - 9:00 PM

RECREATION

PORT ADVENTURES DESK	DECK 3, MID	12:00 PM - 3:30 PM 4:30 PM - 6:00 PM 7:00 PM - 10:00 PM
SENSES FITNESS CENTER (18+)	DECK 9, FWD	11:30 AM - 10:00 PM
WIDE WORLD OF SPORTS DECK	DECK 10, FWD	24 HOURS

GENERAL INFORMATION

BUENA VISTA THEATRE	DECK 5, AFT	SHOWTIMES
DISNEY VACATION CLUB DESK	DECK 4, MID	5:00 PM - 8:00 PM
ONBOARD SALES DESK	DECK 4, MID	7:30 PM - 8:30 PM
FUNNEL VISION	DECK 9, MID	SHOWTIMES
GUEST SERVICES	DECK 3, MID	24 HOURS
HAIR BRAIDING	DECK 9, MID	5:00 PM - 7:00 PM
MEDICAL HEALTH CENTER	DECK 1, FWD	4:30 PM - 7:00 PM
PORT & SHOPPING DESK	DECK 3, MID	6:30 PM - 8:30 PM
PRELUDES	DECK 4, FWD	5:30 PM - 9:00 PM
QUARTER MASTERS (ARCADE)	DECK 9, MID	24 HOURS
SENSES SPA AND SALON	DECK 9, FWD	11:30 AM - 10:00 PM
SHUTTERS PHOTO GALLERY	DECK 4, AFT	6:00 PM - 10:30 PM
WALT DISNEY THEATRE	DECK 4, FWD	SHOWTIMES

SHOPPING

MICKEY'S MAINSAIL	DECK 4, FWD	6:00 PM - 11:00 PM
QUACKS	DECK 9, MID	12:30 PM - 3:30 PM 4:30 PM - 6:30 PM
SEA TREASURES	DECK 3, FWD	6:00 PM - 11:00 PM
VISTA GALLERY	DECK 4, MID	6:00 PM - 10:00 PM
WHITE CAPS	DECK 4, FWD	6:00 PM - 11:00 PM

IMPORTANT NUMBERS

Fire/Security: 7-3001
Medical EMERGENCY: 7-3000
Health Center: 7-1923

DINNER MENU	Animator's Palate: Show Dinner	DRINK OF THE DAY	Paradise Punch (Alcoholic)	WEATHER FORECAST	Today: Sunny
	Carioca's: South American Dinner		Lava Smoothie (Non Alcoholic)		High: 68°F/20°C
	Lumière's: French Dinner				Tomorrow: Partly Sunny
Dining Times: 5:45 p.m. & 8:15 p.m.					High: 72°F/22°C

Evening Attire: Cruise Casual

DINING & LOUNGES

LUNCH

CABANAS	DECK 9, AFT	11:45 AM - 3:15 PM
CARIOCA'S	DECK 3, AFT	11:45 AM - 2:15 PM
DAISY'S DE LITES	DECK 9, AFT	12:00 PM - 3:30 PM 4:15 PM - 6:00 PM
PETE'S BOILER BITES	DECK 9, AFT	12:00 PM - 3:30 PM 4:15 PM - 6:00 PM
PINOCCHIO'S PIZZERIA	DECK 9, MID	12:00 PM - 3:30 PM 4:15 PM - 6:00 PM

DINNER

ANIMATOR'S PALATE	DECK 4, AFT	5:45 PM & 8:15 PM
CARIOCA'S	DECK 3, AFT	5:45 PM & 8:15 PM
LUMIERE'S	DECK 3, MID	5:45 PM & 8:15 PM
PALO (FOR RESERVATIONS CALL 7-6843)	DECK 10, AFT	6:00 PM - 8:30 PM
PETE'S BOILER BITES	DECK 9, AFT	6:00 PM - 10:00 PM
PINOCCHIO'S PIZZERIA	DECK 9, MID	

LATE NIGHT SNACKS

O'GILLS PUB	DECK 3, FWD	10:45 PM - 11:45 PM
PINOCCHIO'S PIZZERIA	DECK 9, MID	9:30 PM - 12:00 MID
PROMENADE LOUNGE	DECK 3, AFT	10:45 PM - 11:45 PM

ADDED FEATURES

EYE SCREAM	DECK 9, AFT	12:00 PM - 11:00 PM
BEVERAGE STATION	DECK 9, AFT	24 HOURS
ROOM SERVICE	DIAL 7-4330	24 HOURS

ENTERTAINMENT - LOUNGES - BARS

Adults must be 21 and older to consume alcoholic beverages.

AFTER HOURS	DECK 3, FWD	(AFTER 9:00 PM, ADULTS ONLY)
COVE CAFE (18+)	DECK 9, MID	11:30 AM - 12:00 MID
D LOUNGE	DECK 4, MID	SHOWTIMES
FATHOMS (18+)	DECK 3, FWD	7:00 PM - 2:00 AM
FROZONE TREATS	DECK 9, AFT	11:30 AM - 8:00 PM
INTERNET CAFE	DECK 3, AFT	24 HOURS
KEYS (18+)	DECK 3, FWD	5:30 PM - 12:30 AM
O'GILLS PUB (18+)	DECK 3, FWD	12:00 PM - 12:30 AM
PRELUDES	DECK 4, FWD	5:30 PM - 9:00 PM
PROMENADE LOUNGE	DECK 3, AFT	11:30 AM - 12:00 MID
PINOCCHIO'S PIZZERIA	DECK 9, MID	11:30 AM - 12:00 MID
SIGNALS (18+)	DECK 9, FWD	11:30 AM - 10:30 PM

Public Health Advisory: Consuming raw or undercooked meats, poultry, seafood, shellfish, or eggs may increase your risk for foodborne illness, especially if you have certain medical condition.



Explore and more with our carefully selected Port Adventures. Pass by the Port Adventures Desk, Deck 3, Midship to find out more.