

PERSONAL NAVIGATOR



Sunrise: 7:14 a.m. Sunset: 7:23 p.m.

Evening Attire: Cruise Casual

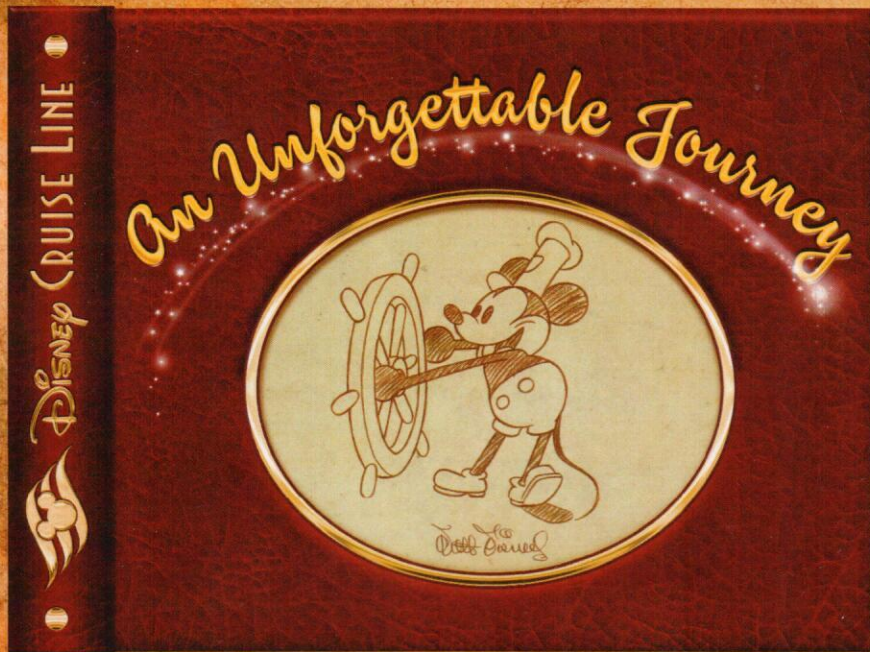
All Ashore: 9:30 a.m.

All Aboard: 4:45 p.m.

Today: Sunny High: 72°F/22°C
Tomorrow: Sunny High: 74°F/23°C

FRIDAY, MARCH 21, 2014

DISNEY'S CASTAWAY CAY



Join us tonight as we celebrate our magical voyage, inspired by the words and wisdom of the man himself,

Walt Disney; featuring the Walt Disney Theatre cast, World Famous Disney Characters and the Comedy & Ventriloquism of Kevin Johnson.

WALT DISNEY THEATRE

Deck 3 & 4, Forward

6:15 p.m. & 8:30 p.m.



As a courtesy to all Guests, we kindly advise that the saving of seats is **not** permitted in the Walt Disney Theatre.



Assistance available at the entrance to the Walt Disney Theatre 30 minutes prior to show time.

Disney's Castaway Cay

Reserved exclusively for Guests on Disney Cruise Line Bahamian and Caribbean cruise vacations, Castaway Cay is Disney's private port-of-call paradise. On this island, enjoy tropical leisure activities, such as snorkeling, boating, swimming and sunbathing.

Friendly Reminders

- You will need your Key To The World Card for all transactions on Disney's Castaway Cay except for the Post Office.
- For your convenience, beach towels are available as you leave the ship; please return them at the gangway at the end of your day.
- Serenity Bay is reserved for Guests 18 and older.
- A limited number of all-terrain wheelchairs across from Scuttle's Cove.
- Due to our commitment to the environment, we ask that seashells, coral and other natural treasures be left undisturbed at Disney's Castaway Cay for all to enjoy.

Debark Talk Broadcast

Your Cruise Director, Ray, presents important information including details regarding U.S. Customs and Border Protection procedures. Tune in to Channel 5 of your stateroom TV.

Please place your luggage outside your stateroom between 8:30 - 10:30 p.m.

Thank you in advance for completing your comment card.

Mickey and Minnie, along with the rest of the Walt Disney Characters, invite you to join them in the ship's Atrium. You won't want to miss this very special farewell meet and greet.

Bring your cameras!

Lobby Atrium,
Deck 3, Midship,
4:30 p.m. & 10:15 p.m.

Don't Miss:

The Disney Fantasy's Whistle

Will be played at 5:00 p.m. today as we set sail from Castaway Cay

The Disney Fantasy's whistle, a prominent element of the "Sailing Away" deck party at the start of the cruise, is quite the musical talent. It's able to perform not just the first musical line of "When You Wish Upon a Star" but also the second line of the song ("makes no difference who you are") plus several measures of "Yo Ho (A Pirate's Life for Me)," "It's a Small World," "Be Our Guest," "Hi Diddle Dee Dee (An Actor's Life for Me)" and "A Dream is a Wish."

Crab Races

Island Gazebo 1, Disney's Castaway Cay - 11:45 a.m.

Island Gazebo 2, Disney's Castaway Cay - 12:45 p.m.

Watch some local sea creatures make a break for the finish line.

Family Talent Show

D Lounge, Deck 4, Midship - 7:30 p.m.

Our families have been rehearsing and are now ready to show-case their talents. Help them make their performing dreams come true by becoming a part of our live studio audience at the Disney Fantasy Family Talent Show!

Visit The Onboard Sales Desk Early Today

Please visit the Onboard Sales Desk, Deck 4, Midship, as early as possible today. The last day of the cruise tends to get busy in the evening, and we want to be sure you have the opportunity to save 10% on your next cruise, receive up to a \$200 onboard credit, and pay a reduced deposit!



DINNER MENU

Animator's Palate: Sea Ya' Real Soon
Enchanted Garden: Sea Ya' Real Soon
Royal Court: Sea Ya' Real Soon

DRINK OF THE DAY

Stingray (Alcoholic)
Parrot Song (Non Alcoholic)

IMPORTANT NUMBERS

Fire/Security: 7-3001
Medical Emergency: 7-3000
Health Center: 7-1923

FUN FOR ALL AGES HIGHLIGHTS



RUNDISNEY: CASTAWAY CAY 5K (10+)

Meet in *The Tube* (Departs at 9:30 a.m.), Deck 4, Aft - 9:00 a.m.
Runners (10+) meet at 9:00 a.m. and make our way to the Bike Rentals where the run will begin.

ISLAND POWER WALK

Meet on the pier by the showers, Disney's Castaway Cay - 9:45 a.m.
Join your Cruise Staff for a brisk walk around the island. Meet outside, on the pier by the Post Office. Meet time is 9:45 a.m. Walk leaves promptly at 10:00 a.m.

FAMILY WHALE DIG

Monstro Point, Disney's Castaway Cay - 1:00 p.m.
Our island paleontologist leads us in the excavation of a giant whale skeleton and other fossilized treasures! Make no bones about it, this is an adventure every beachcomber is sure to dig!

DISNEY VACATION CLUB GROUP PREVIEW

The Tube, Deck 4, Aft - 4:30 p.m.
Want to learn more about taking magical vacations year after year? Stop by our interactive group presentation to find out more information from a Disney Vacation Club representative.

PLAYHOUSE D LOUNGE

D Lounge, Deck 4, Midship - 5:00 p.m.
Calling our youngest of cruisers! Here is a special playtime that is just for you. Come meet new friends; and join in on the fun as your Cruise Staff team takes you through interactive activities made just for you!

FAMILY TALENT SHOW

D Lounge, Deck 4, Midship - 7:30 p.m.
Our families have been rehearsing and are now ready to show-case their talents. Help them make their performing dreams come true by becoming a part of our live studio audience at the Disney Fantasy Family Talent Show!

FAMILY SUPERSTAR KARAOKE

D Lounge, Deck 4, Midship - 10:30 p.m.
Join your Cruise Staff in D Lounge tonight and sing along to your favorite song - fun for everyone.



ADULT ACTIVITY HIGHLIGHTS



SENSES SPA FITNESS CLASSES & SEMINARS

Sunrise Stretch - Donald's Pool - 7:00 a.m.
Fab Abs - Donald's Pool - 7:30 a.m.; Senses Fitness Center - 5:00 p.m.
Body Sculpt Boot Camp (Nom. Fee) - Senses Fitness Center - 8:00 a.m.
Complimentary Footprint Analysis - Senses Spa & Salon - 9:00 a.m.
Yoga on the Beach - Serenity Bay - 11:00 a.m.

TASTING CLASSES

Beer Tasting (21+) - O'Gills Pub - 4:30 p.m.
Please make reservations for tastings at Guest Services for a nominal fee. Tasting Seminars are only for Guests 21 and Older.

CLUB 18*21 - BASKETBALL FREE THROW

In Da Shade Game Pavilion, Disney's Castaway Cay - 1:00 p.m.
Join your Cruise Staff in this fun tournament and see how many you can sink in 30 seconds!

CLUB
18*21

CLUB 18*21 - FAREWELL

The Tube, Deck 4, Aft - 10:00 p.m.
Join your Cruise Staff and your new friends in this last gathering for some fun

LIVE MUSIC WITH ASH & MIKE

La Piazza, Deck 4, Aft - 9:30 p.m. & 11:30 p.m.
Join Ash & Mike as they play live tonight for your listening pleasure.

BATTLE OF THE SEXES

The Tube, Deck 4, Aft - 10:15 p.m.
Join us and find out who will dominate in this hilarious battle of the sexes.

80'S MUSIC CHALLENGE

The Tube, Deck 4, Aft - 10:45 p.m.
"Moon Walk" back to the 80's as we put your musical knowledge of the decade to the test.

GOIN' UNDERGROUND WITH CRUISE STAFF DJ

The Tube, Deck 4, Aft - 11:15 p.m.
Grab onto the handrails as we take you underground with your Cruise Staff DJ



YOUTH ACTIVITY HIGHLIGHTS

DINE & PLAY

A convenience for families dining at 8:15 p.m., our Youth Activities Counselors will be available at 9:15 p.m. at the entrance of Royal Court, Enchanted Garden and Animator's Palate dining rooms to bring registered children to join the fun in the Youth Activity areas.



Deck 5, Midship (7-1440)
(3-12 years old) 4:30 p.m. - 12:00 mid

BIG TOP FUN FEST!

6:00 p.m.

It's the greatest show on Earth. Come re-discover the circus Disney style with clowns, jugglers and classic Disney cartoons.

TALENT SHOW

9:15 p.m.

Your fellow Guests have rehearsed and are ready to show off their talents.



Deck 5, Midship (7-1445)
(3-12 years old) 4:00 p.m. - 12:00 mid

STITCH'S FINAL FAREWELL

7:30 p.m.

We'll get a very special guest as we celebrate the grand finale to this cruise!

FAREWELL DANCE PARTY

10:30 p.m.

Join your fellow teen cruisers for this fun-filled dance party.



Deck 13, Midship (7-9743)
(11-14 years old) 4:30 p.m. - 12:00 mid

CRAFT CORNER

7:30 p.m.

Imagination is the key. It's time to get creative and put your crafty skills to use!

THAT'S HILARIOUS

9:30 p.m.

Ever wanted to show off your comedy skills? Then be a part of the cast for the crazy improv show "That's Hilarious" and put on a live show for your friends.



Entrance on Deck 4, Forward (7-9418)
(14-17 years old) 4:30 p.m. - 1:00 a.m.

DREAM NOW! SEA HOW! - ANIMAL, SCIENCE AND ENVIRONMENT

3:30 p.m.

Ever wonder how man and animal connect and live in harmony? In an interactive session you will dive into their background, education, mentors, and the dream that lead them on their path toward working with animals.

ZOMBIFIED PREMIERE

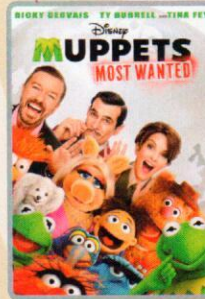
10:15 p.m.

One time only! Come join us for this exclusive big screen premiere of "Zombified," a film featuring the Teens of Vibe as the cast!

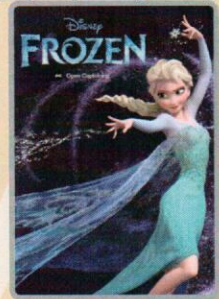
BUENA VISTA THEATRE

Deck 4 & 5, Midship
Today's Movies

OC - Open Captioning

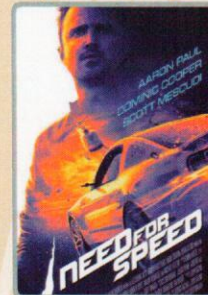


8:00 a.m., 10:15 a.m., 3:15 p.m.,
5:45 p.m. & 8:15 p.m.
Duration: 1 hr 52 mins
Rating: PG



1:00 p.m.
Duration: 1 hr 48 mins
Rating: PG

DOLBY 3D



11:00 p.m.
Duration: 2 hrs 10 mins
Rating: PG-13



FAMILY VARIETY ACT

Featuring the Comedy and Stunts of Matt Baker, as he entertains the entire family in this fun-filled show.

*The Tube,
Deck 4, Aft,
7:30 p.m.*



Be a singing sensation when you and your family take to the stage and sing along to your favorite song.

*D Lounge,
Deck 4, Midship,
10:30 p.m.*

YOUTH ACTIVITIES OPEN HOUSE

Open House is an opportunity for all to come and participate in a variety of exciting activities and free time in the Oceaneer Club, Oceaneer Lab, It's A Small World Nursery, Vibe and Edge throughout the cruise. During these times secured programming will still be offered in the other venue for those looking to check their children into care.

Disney's Oceaneer Lab: 9:00 a.m. - 12:00 p.m.
Disney's Oceaneer Club: 12:00 p.m. - 4:30 p.m.
Vibe: 8:00 p.m. - 10:15 p.m.

MORE TO ENJOY WHILE ONBOARD

THE MUPPETS

There's a Muppet mystery onboard, and Kermit and Pepe need YOU to solve it! Search the ship for clues and use our special detective "badge" to catch the culprit!



Deck 2 & 5, Midship,
9:00 a.m. - 10:00 p.m.



SENSES
SPA & SALON

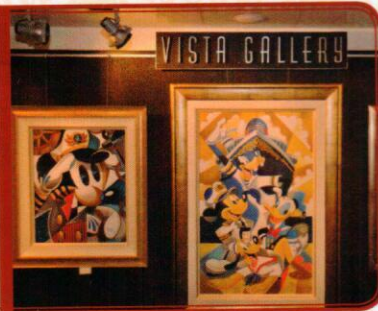
RECOVERY PACKAGE

- 20 minute Back, Neck and Shoulder Massage
- 20 minute Scalp Massage
- 20 minute Foot & Ankle Massage

60 minutes total \$99

VISTA GALLERY

Your last opportunity to purchase your Disney art. Shipping available. Stop by the Vista Gallery, Deck 4, Midship, to find out more.
6:00 p.m. - 10:00 p.m.



Shutters

GET THE PICTURE

Order a Get the Picture! photo disc and share your vacation memories digitally! No need to decide which photos to take home now, select your photos from the comfort of your home. Print, send and share your photos easily! Hurry as supplies are limited.

**Terms and conditions apply. Photos captured on your vacation are only available for purchase during this cruise.*

Disney CRUISE LINE. PORT ADVENTURES

Welcome to Disney's Island Paradise Castaway Cay! Today is the day to relax in an inner tube, snorkel in the Caribbean blue, get up-close and personal to real life stingrays or fly high in the sky on a parasail excursion during a breathtaking aerial adventure. Visit Marge's Barges or one of the rental locations and our friendly team will assist in making any last minute bookings.

PORT ADVENTURES MEETING TIMES AND LOCATIONS

As per ticket	Castaway Ray's Stingray Adventure	Stingray Hut
As per ticket	Castaway Cay Bottom Fishing	Marge's Barges
As per ticket	Glass Bottom Boat	Marge's Barges
As per ticket	Nature Walk and Kayaking	As per ticket
As per ticket	Parasailing	Marge's Barges
As per ticket	Seahorse Catamaran Snorkel Adventure	Marge's Barges
9:30 a.m.	Teen Wild Side	Vibe
As per ticket	Watercraft Ski Adventure	Boat Beach

CASTAWAY CAY ISLAND RENTALS

Bicycles	9:30 a.m. - 4:00 p.m.	Near Cookies Too / Windsock
Boats	9:30 a.m. - 4:00 p.m.	Boat Beach
Snorkeling Gear	9:30 a.m. - 3:30 p.m.	Gil's Fins and Boats / Flippers and Floats
Float	9:30 a.m. - 3:30 p.m.	Gil's Fins and Boats / Flippers and Floats
Getaway Package	9:30 a.m. - 3:30 p.m.	Gil's Fins and Boats / Flippers and Floats

Reservations can be made on the island at each rental location. Castaway Ray's walk up reservations can be made at Gil's Fins and Boats on Family Beach.

SHOPPING

HELPFUL SHOPPING TIP

While shopping onboard, you may collect your items from all three stores before proceeding to checkout at any register. No need to have to wait in line in each store to pay for your items separately! White Caps, Sea Treasures and Mickey's Mainsail, Deck 3, Forward.

DISNEY CRUISE LINE® DOONEY & BOURKE HANDBAGS

Swing by White Caps and commemorate your cruise with style with the new nautical themed Disney Cruise Line® Dooney & Bourke handbag collection. Deck 3, Forward.

SOPHIA FIORI DIAMOND TRUNK SHOW

Sophia Fiori is an LA based designer, wholesaler, and one of Hollywood's favorite designers. Industry leaders in colored diamonds, and more specifically Caribbean blue diamonds - one of the single most popular purchases at sea because it reminds everyone of the colors of the Breathtaking Ocean! White Caps, Deck 3, Forward.

GREAT REASON TO SHOP ONBOARD!

Stop by White Caps, Deck 3 Forward, and receive a Disney Cruise Line® Pillow for \$16.95 with any merchandise purchase of \$30.00 or more and/or a Disney Cruise Line® Throw for \$24.95 with any merchandise purchase of \$40.00 or more. While supplies last. Offer not valid on previous purchases. Offer subject to change without notice.

HELPFUL SHOPPING TIP FOR CASTAWAY CAY

Avoid getting sand and water on your souvenirs by placing your newly purchased items from Castaway Cay on hold at She Sells Seashells and Everything Else and at Buy the Seashore. Your items will then be delivered to White Caps on Deck 3, Forward, for pick up.

Due to port regulations, when the ship is docked, the stores will remain closed.

IMPORTANT INFORMATION

Security Notice

All Guests (including children) who wish to disembark the ship are required to present their Key to the World card at the gangway. A photo ID is also required for those Guests who are 18 years of age or older. Guests under the age of 18 are required to have a parent, guardian or other responsible adult sign an authorization form at the Guest Service Desk if they wish to go ashore unaccompanied or with any adult from another stateroom.

Sunscreen/Insect Repellent Advisory
Use sunscreen first and protect against mosquito borne illnesses by applying insect repellent on top of sunscreen when going ashore.

Cold and Flu Reminder

Please wash hands frequently and thoroughly, particularly before meals. Contact the Health Center by dialing 7-1923, should anyone in your party become ill.

Corridor Quiet Hours

As a courtesy to all our Guests, please recognize quiet hallway hours from 10:00 p.m. til 8:00 a.m.

Inclement Weather

For the safety of all Guests, outdoor events may be changed due to unforeseen weather conditions.

Environmental Message

With Disney's commitment to the Environment, please refrain from throwing anything over the Ship's side. Thank you!

No Reserved Seats Policy

As a courtesy to all our Guests, we kindly advise that the saving of seats is not permitted in the Walt Disney Theatre, and the saving of the sun loungers is not permitted on Deck 11, 12, and 13. Items left unattended will be returned to lost and found at Guest Services, Deck 3 Midship.

Smoking

For the comfort of our guests, the following areas are designated as smoking areas:

- Deck 13, forward, port side by Currents
- Deck 12, aft, port side outdoor area that is accessible through the Meridian Lounge
- Deck 4, aft, port side from 6:00 p.m. to 6:00 a.m. only (all of Deck 4 is non-smoking from 6:00 a.m. to 6:00 p.m.) Smoking is prohibited inside all guest staterooms and on stateroom verandahs. Guest found smoking in their staterooms or on their verandahs will be charged a \$250 stateroom recovery fee.

Walt Disney Theatre

Theatrical performances may use artificial fog, strobe lights, pyrotechnics and other special effects. For the safety of our performers and the comfort of those around you, the use of any photography, video recording device or any electronic equipment is prohibited.

Verandah Safety

Please do not leave any combustible materials on your balcony when not present in your stateroom for safety reasons.

Morning	8:30	8:45	9:00	9:15	9:30	9:45	10:00	10:15	10:30	10:45	11:00	11:15	11:30	11:45	12:00	12:15	12:30	12:45	1:00	1:15	1:30		
FUNNEL VISION																							
BUENA VISTA THEATRE	Muppets Most Wanted (PG) Duration: 1 Hour 52 Minutes < Starts at 8:00 a.m.						Muppets Most Wanted (PG) Duration: 1 Hour 52 Minutes						Frozen (PG) Open Captioning Duration: 1 Hour 48 Minutes										
CHARACTERS				Donald Post Office		Jack Sparrow Marge's Barges		Minnie Scuttles Cove		Donald Post Office		Mickey Rustmore		Jack Sparrow Pelican Point/Tan Stop		Goofy Scuttles Cove						Character Dance Party Gazebo 1	
FUN FOR ALL AGES					Island Power Walk Meet on the pier by the showers				Beach Volleyball Sports Beach				Crab Races Island Gazebo 1				Live Guitar with Tony Delaney Island Gazebo 1						
	Youth Activities Open House Disney's Oceaneer Lab												Basketball Free Throw In Da Shade Game Pavilion		Crab Races Island Gazebo 2								
	Friends of Bill W. Outlook						Footprint Analysis Clinic Senses Fitness Center				Yoga on the Beach Serenity Bay				Youth Activities Open House Disney's Oceaneer Club		Family Whale Dig Monstro Point						
ADULTS	Books and Magazines available in Cove Cafe																						
VIBE 14-17 YEARS OLD							Invade Teen Hideout				Volleyball				Ping Pong				Sand Soccer				
EDGE 11-14 YEARS OLD							Invade Teen Hideout				Volleyball				Lunch at Cookies Too				Pelican Plunge				
SCUTTLE'S COVE							Sand Castle Fun		The Dig at Monstro's Point				The Dig at Monstro's Point				Lunch		Island Crafts				
OCEANEER LAB 3-12 YEARS OLD	Youth Activities Open House																						
OCEANEER CLUB 3-12 YEARS OLD	Youth Activities Open House																						

Afternoon	1:45	2:00	2:15	2:30	2:45	3:00	3:15	3:30	3:45	4:00	4:15	4:30	4:45	5:00	5:15	5:30	5:45	6:00	6:15	6:30	6:45			
FUNNEL VISION	Toy Story 3 (G) Funnel Vision										Cars 2 (G) Funnel Vision													
BUENA VISTA THEATRE	Frozen (PG) Open Captioning Duration: 1 Hour 48 Minutes < Starts at 1:00 p.m.						Muppets Most Wanted (PG) Duration: 1 Hour 52 Minutes						Muppets Most Wanted (PG) Duration: 1 Hour 52 Minutes											
CHARACTERS							Daisy Gangway								Pluto Dk 4, Balcony				Donald Lobby Atrium					
FUN FOR ALL AGES	Midship Detective Agency Deck 2 & 5, Midship								Crafts - Button Making La Piazza				Lobby Atrium		Playhouse D Lounge D Lounge									
	Live Guitar with Tony Delaney Island Gazebo 1														Jewish Sabbath Outlook		Live Piano with Greg Alcock Lobby Atrium						Walt Disney Theatre	
	Youth Activities Open House Disney's Oceaneer Club																							
ADULTS	Board Games Available in O'Gills Pub																							
VIBE 14-17 YEARS OLD	Scavenger Hunt				Teen Choice				Dream Now! Sea How!				Vibe Opens				Chillin' in Vibe							
EDGE 11-14 YEARS OLD	Sand Soccer				Sun Deck Fun								Cards Tournament				Game Challenge				Wii Challenge			
SCUTTLE'S COVE	Caribbean Beach Party				Sand Games																			
OCEANEER LAB 3-12 YEARS OLD	Game Challenge																							
OCEANEER CLUB 3-12 YEARS OLD	Dinner																							
	Youth Activities Open House						Open For Secured Activities						Dinner				Parachute Games				Anyone Can Cook: Cupcakes			
																	Big Top Fun Fest!							

Evening	7:00	7:15	7:30	7:45	8:00	8:15	8:30	8:45	9:00	9:15	9:30	9:45	10:00	10:15	10:30	10:45	11:00	11:15	11:30	11:45	12:00			
FUNNEL VISION																								
BUENA VISTA THEATRE	Muppets Most Wanted (PG) Duration: 1 Hour 52 Minutes										Need for Speed (PG-13) DOLBY 3D Duration: 2 Hours 10 Minutes													
CHARACTERS	Goofy Preludes				Tiana Preludes																			
FUN FOR ALL AGES			Minnie Dk 4, Balcony				Mickey Dk 4, Balcony				Live Music with Take Cover Lobby Atrium		Lobby Atrium		Take Cover LIVE Lobby Atrium									
	Family Talent Show D Lounge												Family Dance Party D Lounge		Family Superstar Karaoke D Lounge									
	Family Dance Party The Tube																							
ADULTS	Live Piano with Greg Alcock La Piazza												Club 18*21 - Farewell The Tube				80's Music Challenge The Tube		Goin' Underground with Cruise Staff DJ The Tube					
VIBE 14-17 YEARS OLD	Teen Choice				Youth Activities Open House								Zombified Premiere				Final Farewell							
EDGE 11-14 YEARS OLD	Wii Challenge				Craft Corner				GAGA Ball				That's Hilarious				Gender Wars				Dance Party			
OCEANEER LAB 3-12 YEARS OLD			Stitch's Final Farewell		Super Sloppy Science				Magic Show				Farewell Dance Party		Magic PlayFloor									
OCEANEER CLUB 3-12 YEARS OLD			Craft Corner						Create a Postcard				Pictionary		Wii Challenge									
	Toy Story Boot Camp				So You Want to be a Pirate?				Talent Show				Movie Time											
	Craft Corner																							

Symbol for activities that will be repeated during the cruise



Youth Activities Open House



FOLD

Fold along the dotted lines and take me with you so you don't miss any of the fun!

FOLD

IN THE SPOTLIGHT SERIES
SOLVE IT SERIES

JUMP UP! SERIES
CREATE & INVENT SERIES

CLUBHOUSE SERIES
STORYBOOK SERIES

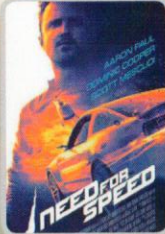
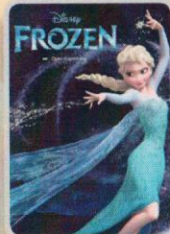
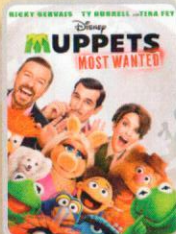
FRIDAY, MARCH 21, 2014 - DISNEY'S CASTAWAY CAY

BUENA VISTA THEATRE

Deck 4 & 5, Midship

OC - Open Captioning

DOLBY 3D



8:00 a.m., 10:15 a.m., 3:15 p.m.,
5:45 p.m. & 8:15 p.m.
Duration: 1 hr 52 mins
Rating: PG

1:00 p.m.
Duration: 1 hr 48 mins
Rating: PG

11:00 p.m.
Duration: 2 hrs 10 mins
Rating: PG-13

Character Appearances

DONALD DUCK

Post Office
9:30 a.m. & 10:30 a.m.
Lobby Atrium - 5:45 p.m.

MINNIE MOUSE

Scuttle's Cove - 10:15 a.m.
Mt. Rustmore - 11:15 a.m.
Deck 4, Balcony - 7:30 p.m.

PLUTO

Mt. Rustmore - 9:45 a.m.
Scuttle's Cove - 10:45 a.m.
Deck 4, Balcony - 5:30 p.m.

CHARACTER DANCE PARTY

Island Gazebo 1 - 12:15 p.m.

DAISY DUCK

Gangway - 3:30 p.m.

CAPTAIN JACK SPARROW

Marge's Barges - 9:45 a.m.
Pelican Point Tram Stop
11:00 a.m.

SEA YA REAL SOON

Lobby Atrium
4:30 p.m. & 10:15 p.m.

MICKEY MOUSE

Scuttle's Cove - 9:45 a.m.
Mt. Rustmore - 10:45 a.m.
Deck 4, Balcony - 8:00 p.m.

PRINCESS TIANA

Preludes - 7:45 p.m.

CHIP & DALE

Post Office
10:00 a.m. & 11:00 a.m.

GOOFY

Mt. Rustmore - 10:15 a.m.
Scuttle's Cove - 11:15 a.m.
Preludes - 7:15 p.m.

Don't forget your Camera to capture those magical moments!
For details of daily Disney character appearances, refer to the character line in your Navigator Grid.

YOUTH ACTIVITIES THEMED EXPERIENCES

CLUBHOUSE SERIES
focuses on movement and features content which appeals to younger children.

JUMP UP! SERIES
includes large group games & movement-oriented activities.

IN THE SPOTLIGHT SERIES
focuses on children's stage presence with lots of activities and enthusiasm.

STORYBOOK SERIES
is designed with a strong connection to the Disney classic stories.

CREATE & INVENT SERIES
will have a tactile focus allowing children to create and admire their work.

SOLVE IT! SERIES
are less active, but will challenge children with problem/solutions-based activities.

YOUTH ACTIVITIES OPEN HOUSE

A non-secured program with activities for families, adults and children of all ages to enjoy together.

SHIP DIRECTORY

YOUTH ACTIVITIES	
DISNEY'S OCEANEER CLUB	DECK 5, MID 4:30 PM - 12:00 MID
DISNEY'S OCEANEER LAB	DECK 5, MID 4:00 PM - 12:00 MID
EDGE	DECK 13, MID 4:30 PM - 12:00 MID
VIBE	DECK 4, FWD 4:30 PM - 1:00 AM
IT'S A SMALL WORLD NURSERY	DECK 5, MID 9:00 AM - 11:30 PM

POOLS & MORE

* Children under 12 must have adult supervision in pool areas.

AQUADUCK	DECK 12, MID 1:00 PM - 10:00 PM
AQUALAB	DECK 12, AFT 1:00 PM - 7:00 PM
DONALD'S POOL	DECK 11, MID 9:00 AM - 6:00 PM
MICKEY'S POOL	DECK 11, MID 6:00 AM - 11:00 PM
MICKEY'S SLIDE	DECK 11, MID 12:00 PM - 6:00 PM
NEMO'S REEF	DECK 11, MID 12:00 PM - 6:00 PM
QUIET COVE POOL (18+)	DECK 11, FWD 6:00 AM - 12:00 MID
SATELLITE FALLS	DECK 13, FWD 6:00 AM - 8:00 PM

RECREATION

GOLF/SPORTS SIMULATORS	DECK 13, AFT 1:00 PM - 6:00 PM
GOOFY GOLF	DECK 13, AFT 8:00 AM - 10:00 PM
GOOFY'S SPORTS DECK	DECK 13, AFT 8:00 AM - 6:00 PM
MIDSHIP DETECTIVE AGENCY	DECKS 2 & 5, MID 9:00 AM - 10:00 PM
PORT ADVENTURES DESK	DECK 5, MID
SENSES FITNESS CENTER (18+)	DECK 11, FWD 6:30 AM - 10:00 PM

GENERAL INFORMATION

ARR-CADE	DECK 11, AFT 24 HOURS
DISNEY VACATION CLUB	DECK 4, MID 9:00 AM - 11:00 AM 6:00 PM - 10:00 PM
GUEST SERVICES	DECK 3, MID 24 HOURS
MEDICAL HEALTH CENTER	DECK 1, FWD 9:30 AM - 11:00 AM 4:30 PM - 7:00 PM
ONBOARD SALES DESK	DECK 4, MID 8:00 AM - 10:00 AM 4:00 PM - 6:00 PM 7:00 PM - 10:00 PM
PORT & SHOPPING DESK	DECK 4, MID
PRELUDES	DECK 3, FWD 5:45 PM - 6:30 PM 8:00 PM - 8:45 PM
SENSES SPA AND SALON	DECK 11, FWD 8:00 AM - 10:00 PM
SHUTTERS PHOTO GALLERY	DECK 4, MID 3:30 PM - 11:30 PM
SHUTTERS DIGITAL	DECK 4, MID 12:00 MID - 11:30 PM

SHOPPING

BIBBIDI BOBBIDI BOUTIQUE	DECK 5, MID 9:00 AM - 9:00 PM
MICKEY'S MAINSAIL	DECK 3, FWD 5:30 PM - 11:00 PM
QUACKS	DECK 11, MID
SEA TREASURES	DECK 3, FWD 5:30 PM - 11:00 PM
VISTA GALLERY	DECK 4, MID 5:30 PM - 10:00 PM
WHITE CAPS	DECK 3, FWD 5:30 PM - 11:00 PM
WHOZITS & WHATZITS	DECK 11, MID 7:00 PM - 10:00 PM

DINNER MENU

Animator's Palate: Sea Ya' Real Soon
Enchanted Garden: Sea Ya' Real Soon
Royal Court: Sea Ya' Real Soon
Dining Times: 5:45 p.m. & 8:15 p.m.

DRINK OF THE DAY

Stringray (Alcoholic)
Parrot Song (Non Alcoholic)

WEATHER FORECAST

Today: Sunny
High: 72°F/22°C
Tomorrow: Sunny
High: 74°F/23°C

Evening Attire: Cruise Casual

DINING & LOUNGES

BREAKFAST

CABANAS CONTINENTAL	DECK 11, AFT 7:00 AM - 7:30 AM
CABANAS	DECK 11, AFT 7:30 AM - 10:45 AM
ENCHANTED GARDEN	DECK 2, MID 8:30 AM - 10:30 AM
ROYAL COURT	DECK 3, MID 8:00 AM - 9:30 AM

LUNCH

CABANAS	DECK 11, AFT 12:00 PM - 1:30 PM
COOKIES	CASTAWAY CAY 11:30 AM - 2:00 PM
COOKIES TOO	CASTAWAY CAY 11:30 AM - 2:00 PM
FILLMORE'S FAVORITES	DECK 11, MID 11:00 AM - 6:00 PM
LUIGI'S PIZZA	DECK 11, MID 11:00 AM - 6:00 PM
TOW MATER'S GRILL	DECK 11, MID 11:00 AM - 10:00 PM

DINNER

ANIMATOR'S PALATE	DECK 3, AFT 5:45 PM & 8:15 PM
ENCHANTED GARDEN	DECK 2, MID 5:45 PM & 8:15 PM
ROYAL COURT	DECK 3, MID 5:45 PM & 8:15 PM
PALO (18+) (RESERVATIONS REQ. & NOM. FEE APPLIES)	DECK 12, AFT 6:00 PM - 8:30 PM
REMY (18+) (RESERVATIONS REQ. & NOM. FEE APPLIES)	DECK 12, AFT 6:00 PM - 8:30 PM

LATE NIGHT SNACKS

LA PIAZZA (18+)	DECK 4, AFT 10:45 PM - 11:45 PM
LUIGI'S PIZZA	DECK 11, MID 9:30 PM - 12:00 MID

ADDED FEATURES

BEVERAGE STATION	DECK 11, MID 24 HOURS
EYE SCREAM	DECK 11, MID 11:00 AM - 11:00 PM
ROOM SERVICE	DIAL 0 CLOSSES AT 1:30 AM

ENTERTAINMENT - LOUNGES - BARS

Adults must be 21 and older to consume alcoholic beverages.

BON VOYAGE	DECK 3, MID 3:30 PM - 11:00 PM
COVE BAR (18+)	DECK 11, FWD 11:30 AM - 11:00 PM
COVE CAFE (18+)	DECK 11, FWD 7:00 AM - 12:00 MID
CURRENTS (18+)	DECK 13, FWD 12:00 PM - 11:00 PM
D LOUNGE	DECK 4, MID SHOWTIMES
FROZONE TREATS	DECK 11, MID 11:00 AM - 10:00 PM
LA PIAZZA (18+ AFTER 9:00 P.M.)	DECK 4, AFT 4:00 PM - 12:00 MID
MERIDIAN (18+)	DECK 12, AFT 5:00 PM - 12:00 MID
O'GILLS PUB (18+ AFTER 9:00 PM)	DECK 4, AFT 4:00 PM - 12:00 MID
OOH LA LA (18+)	DECK 4, AFT 5:00 PM - 12:00 MID
OUTLOOK	DECK 14, MID SUNSET TIMES
SKYLINE (18+)	DECK 4, AFT 5:00 PM - 12:30 AM
THE TUBE (18+ AFTER 9:00 P.M.)	DECK 4, AFT 9:30 PM - 1:00 AM
VISTA CAFE	DECK 4, MID 7:00 AM - 11:00 PM
WAVES	DECK 12, AFT

CASTAWAY CAY BARS

CONCHED OUT BAR	CASTAWAY CAY 9:00 AM - 4:00 PM
CASTAWAY AIR BAR	CASTAWAY CAY 9:00 AM - 3:30 PM
HEADS UP BAR	CASTAWAY CAY 9:00 AM - 3:30 PM
SAND BAR	CASTAWAY CAY 9:00 AM - 4:00 PM

Consumers who order raw or partially cooked, ready-to-eat food of animal origin, are hereby informed that the food is not sufficiently cooked to ensure its safety.

IMPORTANT NUMBERS

Fire/Security: 7-3001
Medical EMERGENCY: 7-3000
Health Center: 7-1923

All Ashore:
Approx. 9:30 a.m.

All Aboard:
4:45 p.m.