

PERSONAL NAVIGATOR



THURSDAY, MARCH 20, 2014

Sunrise: 7:41 a.m. Sunset: 7:48 p.m.
Evening Attire: Semi Formal

Today: Sunny High: 78 °F/26 °C
Tomorrow: Sunny High: 72 °F/22 °C

DAY AT SEA

Disney's Believe

Genie from Aladdin and many of Disney's most-beloved magic makers take a father on a magical journey to show him that anything is possible if you just believe.

WALT DISNEY THEATRE
DECK 3 & 4, FORWARD

6:15 p.m. & 8:30 p.m.



As a courtesy to all Guests, we kindly advise that the saving of seats is **not** permitted in the Walt Disney Theatre.



Assistance available at the entrance to the Walt Disney Theatre 30 minutes prior to show time.

Disney FANTASY Fun Facts

While the cute baby elephant, Dumbo serves as a fantastic stern character, in real life he would have to gather 24,266 other adult male African elephants to match the weight of the Disney Fantasy.

A "light point" is shipbuilders' lingo for anything that's a light. There are approximately 80,000 light points on the Disney Fantasy – "double the normal number for a ship this size," according to Meyer Werft, the shipyard in Germany where the Disney Fantasy was built. The large number is the result of Disney's flair for theatrical experiences – accomplished primarily with LEDs and other "environmentally friendly" lighting.

Looking upward in the ship's Lobby Atrium brings Guest's eye-to-crystal with a glowing piece of "Art Nouveau-inspired jewelry" – a cascading chandelier flowing downward from a massive stained-glass flourish on the ceiling in peacock hues of greens and blues. The chandelier itself is more than 10 feet in diameter, a one-of-a-kind work of art evoking a peacock in stained glass and more than 60,000 clear Swarovski crystal beads.

Debark Talk Broadcast

Your Cruise Director, Ray, presents important information including details regarding U.S. Customs and Border Protection procedures. Tune into Channel 5 of your stateroom TV.

Disney's Mirror Mirror

Head to D Lounge for the fairest game show of them all, Mirror, Mirror featuring the Magic Mirror and everyone's favorite dwarf, Dopey.

D Lounge,
Deck 4, Midship,
7:30 p.m. & 10:15 p.m.



Sport's Simulators

Digital sports simulators are available at Goofy's Sports Deck on Deck 13, Aft. This state-of-the-art virtual sports experience includes golf, basketball, baseball, hockey, football and soccer. Book now at the Port Adventures Desk, Deck 5, Midship.

Don't Miss:

The Disney Fantasy's Whistle

Will be played after today's noon announcement

The Disney Fantasy's whistle, a prominent element of the "Sailing Away" deck party at the start of the cruise, is quite the musical talent. It's able to perform not just the first musical line of "When You Wish Upon a Star" but also the second line of the song ("makes no difference who you are") plus several measures of "Yo Ho (A Pirate's Life for Me)," "It's a Small World," "Be Our Guest," "Hi Diddle Dee Dee (An Actor's Life for Me)" and "A Dream is a Wish."

Captain's Signing

White Caps, Deck 3, Forward - 1:15 p.m.

Meet the Master of the Disney Fantasy and have your cruise memories signed.

Anyone Can Cook - Lobster Ravioli (18+)

D Lounge, Deck 4, Midship - 2:15 p.m.

From our galley to yours. Join our chefs as they show you how to prepare delicious dishes. Today's Menu - Lobster Ravioli

Majority Rules (18+)

The Tube, Deck 4, Aft - 10:00 p.m.

Join your Club Host, to find out who really rules!

DINNER MENU

Animator's Palate: Captain's Gala
Enchanted Garden: Captain's Gala
Royal Court: Captain's Gala

DRINK OF THE DAY

High Tide (Alcoholic)
Passion Cream Freeze
(Non Alcoholic)

IMPORTANT NUMBERS

Fire/Security: 7-3001
Medical Emergency: 7-3000
Health Center: 7-1923

FUN FOR ALL AGES HIGHLIGHTS



JAKE & THE NEVERLAND PIRATES

D Lounge, Deck 4, Midship - 9:30 a.m.

A'Hooy there mates, Join us for an adventure in D Lounge with Jake and the Neverland Pirates.



JACK-JACK'S INCREDIBLE DIAPER DASH

Lobby Atrium, Deck 3, Midship - 10:00 a.m.

Calling all baby Cruisers! It's time to take to the mat to see who's the fastest crawler of the seven seas! Register your baby 15 minutes prior to the big race.



MICKEY 200

The Tube, Deck 4, Aft - 10:30 a.m.

Don't eat your vegetables... race them in this wild and wacky charge to the finish line. May the best veggie win! (Limited Availability)



DISNEY ANIMATION: STAGING A SCENE

D Lounge, Deck 4, Midship - 12:45 p.m.

Go behind the scenes at Walt Disney Animation Studios and learn how basic poses, silhouette, and placement (long shot, medium shot, close-up) enhance animation storytelling. Then, participate in a drawing exercise where you make the choices to communicate a story in this fun and fascinating enrichment program.

STEP IN TIME DANCE CLASS

Lobby Atrium, Deck 3, Midship - 2:00 p.m.

Join our Walt Disney Theatre Dance Captain to learn an energetic number from Disney's Believe. Fun for everyone.

OFFICER PIN TRADING

Preludes, Deck 3, Forward - 7:15 p.m.

Come trade pins with the Officers of the Disney Fantasy.

FAMILY SUPERSTAR KARAOKE

D Lounge, Deck 4, Midship - 9:30 p.m. & 11:15 p.m.

Join your Cruise Staff in D Lounge tonight and sing along to your favorite song - fun for everyone.



ADULT ACTIVITY HIGHLIGHTS

SENSES SPA FITNESS CLASSES & SEMINARS

Sunrise Stretch - Donald's Pool - 7:00 a.m.

Fab Abs - Donald's Pool - 7:30 a.m.

Complimentary Footprint Analysis - Senses Spa & Salon - 8:00 a.m.

Body Sculpt Boot Camp (Nom. Fee) - Senses Fitness Center - 9:00 a.m.

How to Increase Your Metabolism - Senses Fitness Center - 11:00 a.m.

Acupuncture: Chinese Herbs - Senses Fitness Center - 12:15 p.m.

Detox For Health and Weight Loss - Senses Spa & Salon - 1:00 p.m.

Back Pain Solutions - Senses Spa & Salon - 2:00 p.m.

Group Cycling - Senses Fitness Center - 4:00 p.m.

Fitness Frenzy (13-17, Nom. Fee) - Senses Fitness Center - 7:00 p.m.



TASTING CLASSES

Chocolate & Liquor Tasting (21+) - Ooh La La - 12:15 p.m.

Rum Tasting (21+) - Meridian - 1:00 p.m.

Stem to Stern Wine Tasting (21+) - Ooh La La - 1:45 p.m.

Mixology (21+) - Skyline - 2:00 p.m. & 4:00 p.m.

Martini Tasting (21+) - Meridian - 3:00 p.m.

Tequila & Margarita Tasting (21+) - Ooh La La - 4:45 p.m.

Whiskey Tasting (21+) - Cove Cafe - 10:00 p.m.

Please make reservations for tastings at Guest Services for a nominal fee.

Tasting Seminars are only for Guests 21 and Older.



CLUB 18*21 - LUNCH

Royal Court, Deck 3, Midship - 12:30 p.m.

CLUB 18*21 - MIXER

The Tube, Deck 4, Aft - 9:45 p.m.

ART OF THE THEME SHOW TOUR

Pre-Book at Guest Services, Deck 3, Midship

Join us on a guided ship tour and discover the key ingredients that make the Disney Fantasy cruise ship one-of-a-kind.

ULTIMATE DISNEY TRIVIA

La Piazza, Deck 4, Aft - 11:30 a.m.

Test your Disney knowledge at this wacky trivia contest.



MATCH YOUR MATE

The Tube, Deck 4, Aft - 11:00 p.m.

It's time to play everyone's favorite couples game show - Match Your Mate!

\$10,000 MEGA JACKPOT BINGO

D Lounge, Deck 4, Midship

Card Sales - 10:45 a.m.

Game Starts - 11:00 a.m.

It's Big, it's Massive, it's Supersized! It's \$10,000 MEGA Jackpot Bingo! Take home \$10,000 if you can cover your card in 46 numbers or less. If not, we carry on to play for the biggest cash prize of the session, plus today's Disney Vacation Club sponsored raffle includes a \$100 Onboard Credit and prize-packs.

FINAL JACKPOT BINGO

Buena Vista Theatre, Deck 4 & 5, Forward

Card Sales - 4:00 p.m.

Game Starts - 4:30 p.m.

The snowball jackpot **MUST BE WON** at this final session! Beat the line and get your cards early. Who will be the lucky winner? It could be you!

YOUTH ACTIVITY HIGHLIGHTS

DINE & PLAY

A convenience for families dining at 8:15 p.m., our Youth Activities Counselors will be available at 9:15 p.m. at the entrance of Royal Court, Enchanted Garden and Animator's Palate dining rooms to bring registered children to join the fun in the Youth Activity areas.



Deck 5, Midship (7-1440)

(3-12 years old) 9:00 a.m. - 12:00 mid

TINKER BELL'S TALENT SHOW

11:15 a.m.

Tinker Bell has come from Pixie Hollow to Disney Cruise Line to help young cruisers discover their Fairy Talents.

PLUTO'S PAJAMA PARTY

9:00 p.m.

Bring the little ones in their pajamas but there will be anything but sleep when Pluto and friends host the ultimate slumber party!



Deck 5, Midship (7-1445)

(3-12 years old) 9:00 a.m. - 12:00 mid

SUPER SLOPPY SCIENCE

12:45 p.m.

Join Professor Make-O-Mess in some of the most extreme experiments you will ever see in the world of Super Sloppy Science!

STITCH'S ADVENTURE SQUAD

7:30 p.m.

Stitch, everyone's favorite alien, is making an appearance to share some of his mischievous games and activities.



Deck 13, Midship (7-9743)

(11-14 years old) 9:00 a.m. - 1:00 a.m.

SCAVENGER HUNT

11:00 a.m.

A little friendly competition exploring the ship; see if you can solve the clues and finish first.

ESPN DREAM TEAM DRAFT DAY - BASKETBALL

8:45 p.m.

Join the "Commissioner" and engage in this interactive fantasy basketball draft unlike anything you've ever seen! Can YOU draft the greatest basketball team of All-Time?



Entrance on Deck 4, Forward (7-9418)

(14-17 years old) 10:00 a.m. - 2:00 a.m.

DREAM NOW! SEA HOW! - CREATE IT

2:00 p.m.

Imagine a job where your days are spent dreaming up plots, characters, designs or mechanics that only come from one place... In this VIP Experience you will meet one of the creative minds with Disney. A special Guest will ignite your imagination and answer your questions.

PUMP IT UP

9:00 p.m.

Join us in the Fitness Center for a Teen Only workout. Meet in Vibe to join in!

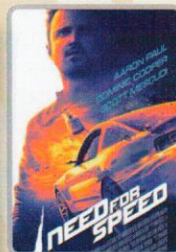
BUENA VISTA THEATRE

Deck 4 & 5, Midship
Today's Movies

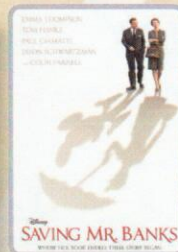
DOLBY 3D



8:00 a.m.
Duration:
1 hr 48 mins
Rating: PG

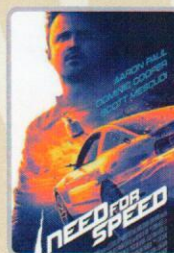


10:30 a.m.
Duration:
2 hrs 10 mins
Rating: PG-13



1:00 p.m.
Duration:
2 hrs 5 mins
Rating: PG-13

PremEAR



5:30 p.m. & 8:30 p.m.
Duration: 2 hrs 10 mins
Rating: PG-13



12:01 a.m.
Duration: 1 hr 52 mins
Rating: PG



ADULT VARIETY ACT

Featuring the
Comedy and Stunts
of Matt Baker,
as he entertains you in this
adult exclusive show.

*The Tube (18+),
Deck 4, Aft,
10:30 p.m.*



MOVIE PREMAR

Muppets Most Wanted

Rated: PG
Duration: 1 Hour 52 Minutes

*Buena Vista Theatre,
Deck 4 & 5, Midship,
12:01 a.m.
(Doors open at 11:30 p.m.)*

YOUTH ACTIVITIES OPEN HOUSE

Open House is an opportunity for all to come and participate in a variety of exciting activities and free time in the Oceaneer Club, Oceaneer Lab, It's A Small World Nursery, Vibe and Edge throughout the cruise. During these times secured programming will still be offered in the other venue for those looking to check their children into care.

Disney's Oceaneer Lab: 10:30 p.m. - 12:00 mid

Disney's Oceaneer Club: 9:00 a.m. - 11:00 a.m.

Vibe: 10:00 a.m. - 11:00 a.m. & 6:30 p.m. - 8:30 p.m.

Edge: 9:00 a.m. - 10:00 a.m. & 5:00 p.m. - 6:30 p.m.

MORE TO ENJOY WHILE ONBOARD



The puppies from 101 Dalmatians have gone missing! Use your special detective "badge" to track down the puppies and catch the villain who took them.

Deck 2 & 5, Midship,
9:00 a.m. - 10:00 p.m.



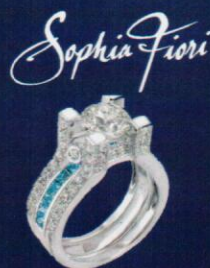
SENSES
SPA & SALON
SPA TOPIA SPECIAL

Full body exfoliation. Hotstone back massage on the back neck and shoulders, booster facial and foot and ankle massage

75 mins. \$135

GUESS THE CARAT!

Guess the carat weight of one of our exquisite Sophia Fiori diamond rings. Whoever guesses closest wins a 5 carat midnight sapphire and a pair of midnight black sapphire studs! 9:30 a.m. - 7:00 p.m. Winners announced and raffle at 7:30 p.m. Must be present to win! White Caps, Deck 3, Forward. This offer is not affiliated with Disney Cruise Line®.



SMILE

Tonight is your last chance for professional portraits! Capture the magic of your vacation at one of our portrait studios and let the memories live.

Visit our professional portrait studios located in the Lobby Atrium, Deck 3, Midship.

5:00 p.m. - 6:00 p.m.
7:15 p.m. - 8:30 p.m.
9:30 p.m. - 10:30 p.m.

**Please note that photos are available for viewing on our interactive photo kiosks approximately five hours after being taken and are only available for purchase during this cruise.*



CELEBRATE THE SEASONS AT SEA

Disney Cruise Line is adding an extra layer of magic with enchanting holiday celebrations. One's a little spooky and the other is very merry! Visit the Onboard Sales Desk today for details about Halloween on the High Seas and Very Merrytime Cruises. Plus, get details about our special onboard booking offer!



DISNEY VACATION CLUB® GROUP PREVIEW

Want to learn more about taking magical vacations year after year? Please see a Disney Vacation Club representative on Deck 4, Midship, or call 7-2805 from your stateroom phone for more information about our interactive group presentation.



runDisney: CASTAWAY CAY 5K REGISTRATION (10+)

Sign up today for the runDisney: Castaway Cay 5K! Please visit the Port Adventures Desk or the Guest Services Desk to register at anytime prior to our arrival at Disney's Castaway Cay. Please note that runners must be 10 years of age or older to participate.



ARR-CADE

Where can you be a ninja, play the guitar like a rock star, race a car down the streets of Tokyo and along the way WIN some great prizes? Arr-cade located Deck 11, Aft where the pirates play.

Connect@Sea

We are now offering a NEW and improved Internet service to stay connected on your cruise like no other in the industry! Internet packages range from \$0.09 per MB - \$29.00 (1000 MB package) limited time promotional offer. For more information contact your Connect@Sea Expert or Guest Services onboard.



Disney's private island Castaway Cay not only offers a terrific family beach day, but many other excursions and rentals to compliment. Snorkeling, bike and float rentals, parasailing plus much more, means that there is something for everyone at Disney's Castaway Cay.

To make your reservation, visit the Port Adventures Desk, Deck 5, Midship.

SHOPPING

OFFICER PIN TRADING

Check out the Disney Cruise Line® pins when you visit Mickey's Mainsail, Deck 3, Forward. Later, join the Officers of the Disney Fantasy® Cruise Ship for pin trading fun at 7:15 p.m. in Preludes, Deck 3, Forward.

ERNST BENZ WATCHES

Manufactured in Switzerland and made in the time honored tradition of aviation timekeepers and the fine art of watch making, these large formats, self-winding instruments are renowned for their accuracy, durability and legibility. Stop by White Caps to see our full collection today! Deck 3, Forward.

GREAT REASON TO SHOP ONBOARD!

Stop by White Caps, Deck 3 Forward, and receive a Disney Cruise Line® Pillow for \$16.95 with any merchandise purchase of \$30.00 or more and/or a Disney Cruise Line® Throw for \$24.95 with any merchandise purchase of \$40.00 or more. While supplies last. Offer not valid on previous purchases. Offer subject to change without notice.

CAPTAIN'S SIGNING

Stop by White Caps at 1:15 p.m. to meet the Master of the Disney Fantasy and have your cruise mementos signed! Stunning replica ships are available in Sea Treasures, Deck 3, Forward. Beautiful Disney Cruise Line® prints are available in the Vista Gallery, Deck 4, Midship.

HIDDEN CHARACTERS IN THOMAS KINKADE ART!

Known as the "Painter of Light," Thomas Kinkade is one Disney's most celebrated artists having created an array of enchanting artwork. Stop by the Vista Gallery today to view his unique collection of paintings featuring some of your favorite Disney characters! Also, take the time to try and find all of the hidden Disney characters scattered throughout his paintings. Are you up to the challenge? Deck 4, Midship.

IMPORTANT INFORMATION

Security Notice

All Guests (including children) who wish to disembark the ship are required to present their Key to the World card at the gangway. A photo ID is also required for those Guests who are 18 years of age or older. Guests under the age of 18 are required to have a parent, guardian or other responsible adult sign an authorization form at the Guest Service Desk if they wish to go ashore unaccompanied or with any adult from another stateroom.

Sunscreen/Insect Repellent Advisory

Use sunscreen first and protect against mosquito borne illnesses by applying insect repellent on top of sunscreen when going ashore.

Cold and Flu Reminder

Please wash hands frequently and thoroughly, particularly before meals. Contact the Health Center by dialing 7-1923, should anyone in your party become ill.

Corridor Quiet Hours

As a courtesy to all our Guests, please recognize quiet hallway hours from 10:00 p.m. til 8:00 a.m.

Inclement Weather

For the safety of all Guests, outdoor events may be changed due to unforeseen weather conditions.

Environmental Message

With Disney's commitment to the Environment, please refrain from throwing anything over the Ship's side. Thank you!

No Reserved Seats Policy

As a courtesy to all our Guests, we kindly advise that the saving of seats is not permitted in the Walt Disney Theatre, and the saving of the sun loungers is not permitted on Deck 11, 12, and 13. Items left unattended will be returned to lost and found at Guest Services, Deck 3 Midship.

Smoking

For the comfort of our guests, the following areas are designated as smoking areas:

- Deck 13, forward, port side by Currents
- Deck 12, aft, port side outdoor area that is accessible through the Meridian Lounge
- Deck 4, aft, port side from 6:00 p.m. to 6:00 a.m. only (all of Deck 4 is non-smoking from 6:00 a.m. to 6:00 p.m.) Smoking is prohibited inside all guest staterooms and on stateroom verandahs. Guest found smoking in their staterooms or on their verandahs will be charged a \$250 stateroom recovery fee.

Walt Disney Theatre

Theatrical performances may use artificial fog, strobe lights, pyrotechnics and other special effects. For the safety of our performers and the comfort of those around you, the use of any photography, video recording device or any electronic equipment is prohibited.

Verandah Safety

Please do not leave any combustible materials on your balcony when not present in your stateroom for safety reasons.

Morning	8:30	8:45	9:00	9:15	9:30	9:45	10:00	10:15	10:30	10:45	11:00	11:15	11:30	11:45	12:00	12:15	12:30	12:45	1:00	1:15	1:30
FUNNEL VISION	Tinker Bell (G) Funnel Vision							The Princess and the Frog (G) Funnel Vision							The Lion King (G) Funnel Vision						
BUENA VISTA THEATRE	Frozen (PG) Duration: 1 Hour 48 Minutes < Starts at 8:00 a.m.							Need for Speed (PG-13) DOLBY 3D Duration: 2 Hours 10 Minutes							Saving Mr. Banks (PG-13) Duration: 2 Hours 5 Minutes						
CHARACTERS	Mickey Dk 4, Balcony							Princess Anna Preludes Jake Dk 4, Balcony							Princess Anna Preludes Minnie Dk 4, Balcony						
FUN FOR ALL AGES	Toddler Time D Lounge							Bingo Pre Sales							\$10,000 Mega Jackpot BINGO D Lounge						
	Crafts: Origami Frogs La Piazza							Mickey 200 The Tube (Limited Availability)							Disney Animation: Staging a Scene D Lounge						
	Friends of Bill W. Outlook							Team Trivia O'Gills Pub							Ultimate Disney Trivia La Piazza						
ADULTS	Body Sculpt Boot Camp (Nom. Fee) Senses Fitness Center							ESPN Dream Team Draft Day - Basketball O'Gills Pub							How to Increase Your Metabolism Senses Fitness Center						
VIBE 14-17 YEARS OLD	Youth Activities Open House							Sun Deck Fun							Disney Animation: Persistence of Vision						
EDGE 11-14 YEARS OLD	Youth Activities Open House							Elephant Soccer							Scavenger Hunt						
OCEANEER LAB 3-12 YEARS OLD	Craft Corner							Cup Stacking Challenge							Wii Challenge						
OCEANEER CLUB 3-12 YEARS OLD	Youth Activities Open House							Disney Animation: Creating a Character							Magic PlayFloor						
	Mickey's Puzzle Playtime							Tinker Bell's Talent Show							Lunch						
	Color Yourself Heroic							Mickey's Puzzle Playtime							Super Sloppy Science						
Afternoon	1:45	2:00	2:15	2:30	2:45	3:00	3:15	3:30	3:45	4:00	4:15	4:30	4:45	5:00	5:15	5:30	5:45	6:00	6:15	6:30	6:45
FUNNEL VISION	Pixar Short Films (G) Funnel Vision							The Muppets (PG) Funnel Vision							Bedtime Stories (PG) Funnel Vision						
BUENA VISTA THEATRE	Saving Mr. Banks (PG-13) Duration: 2 Hours 5 Minutes							Bingo Pre Sales							Need for Speed (PG-13) Duration: 2 Hours 10 Minutes						
CHARACTERS	Stitch Dk 4, Balcony							Hook & Smee Dk 4, Balcony							Chip & Dale Dk 4, Balcony						
FUN FOR ALL AGES	Towel Folding The Tube							Disney Tunes Trivia La Piazza							Pictionary Challenge La Piazza						
	Step In Time Dance Class Lobby Atrium							Bingo Pre Sales							Final Jackpot BINGO Buena Vista Theatre						
	Talent Show Rehearsals D Lounge							Live Music with Ash & Mike La Piazza							Live Piano with Greg Alcock Lobby Atrium						
ADULTS	Wine Tasting (21+) Ooh La La							Anyone Can Cook - Lobster Ravioli D Lounge							Martini Tasting (21+) Meridian						
VIBE 14-17 YEARS OLD	NCAA Basketball - March Madness O'Gills Pub (Subject to satellite availability)							Chip It Golf Lobby Atrium							Group Cycling Senses Fitness Center						
EDGE 11-14 YEARS OLD	Dream Now! Sea How! - Create It							Dive into DJ'ing							Digi Hunt						
OCEANEER LAB 3-12 YEARS OLD	Relay Games							Craft Corner							Ship Factor						
OCEANEER CLUB 3-12 YEARS OLD	Journey to Neverland							Get the Hook							Piston Cup Challenge						
	Craft Corner							Dinner							GAGA Ball						
	Magic PlayFloor							Cruisin' with Crush							Memory Wall						
Evening	7:00	7:15	7:30	7:45	8:00	8:15	8:30	8:45	9:00	9:15	9:30	9:45	10:00	10:15	10:30	10:45	11:00	11:15	11:30	11:45	12:00
FUNNEL VISION	Enchanted (PG) Funnel Vision							Remember the Titans (PG) Funnel Vision							Muppets Most Wanted (PG) 1 Hour 52 Minutes -> Starts at 12:01 a.m.						
BUENA VISTA THEATRE	Cinderella Lobby Atrium (V)							Belle Lobby Atrium (V)							Minnie Dk 4, Balcony						
CHARACTERS	Minnie Dk 4, Balcony							Mickey Dk 4, Balcony							Goofy Preludes						
FUN FOR ALL AGES	Mirror, Mirror D Lounge							Family Superstar Karaoke D Lounge							Disney's Mirror D Lounge						
	Family Dance Party The Tube							The Quest The Tube							Family Superstar Karaoke D Lounge						
	Officer Pin Trading Preludes							Walt Disney Theatre							Live Music with Take Cover Lobby Atrium						
ADULTS	Live Music with Ash & Mike La Piazza							DJ Requests The Tube							Majority Rules The Tube						
VIBE 14-17 YEARS OLD	NCAA Basketball - March Madness O'Gills Pub (Subject to satellite availability)							Ash & Mike LIVE La Piazza							The Physical Comedy of MATT BAKER The Tube						
EDGE 11-14 YEARS OLD	Youth Activities Open House							Pump It Up							Gender Wars						
OCEANEER LAB 3-12 YEARS OLD	GAGA Ball							Craft Corner							ESPN Dream Team Draft Day - Basketball						
OCEANEER CLUB 3-12 YEARS OLD	Wii Challenge							Four Square							Dance Party						
	Stitch's Adventure Squad							Mirror, Mirror							Youth Activities Open House						
	Cup Stacking Challenge							Wii Challenge							Craft Corner						
	Once Upon a Time							Game Challenge							Pluto's Pajama Party						
	Game Challenge							Camp Rocking Out!							Anyone Can Cook						

Symbol for activities that will be repeated during the cruise



Youth Activities Open House



FOLD

Fold along the dotted lines and take me with you so you don't miss any of the fun!

FOLD

IN THE SPOTLIGHT SERIES
SOLVE IT! SERIES



JUMP UP! SERIES



CREATE & INVENT SERIES



CLUBHOUSE SERIES



STORYBOOK SERIES



THURSDAY, MARCH 20, 2014 - DAY AT SEA

BUENA VISTA THEATRE

Deck 4 & 5, Midship

DOLBY 3D

PremEAR



8:00 a.m.	10:30 a.m.	1:00 p.m.	5:30 p.m. & 8:30 p.m.	12:01 a.m.
Duration: 1 hr 48 mins	Duration: 2 hrs 10 mins	Duration: 2 hrs 5 mins	Duration: 2 hrs 10 mins	Duration: 1 hr 52 mins
Rating: PG	Rating: PG-13	Rating: PG-13	Rating: PG-13	Rating: PG

Character Appearances

MICKEY MOUSE

Deck 4, Balcony - 9:45 a.m.,
5:45 p.m., 7:45 p.m. & 10:00 p.m.

JAKE - THE NEVERLAND PIRATE

Deck 4, Balcony - 10:15 a.m.

PRINCESS ANNA OF ARENDELLE

Preludes
10:15 a.m. & 11:45 a.m.

PRINCESS GATHERING

Lobby Atrium - 11:00 a.m.

PRINCESS SOFIA

Deck 4, Balcony
11:15 a.m. & 12:30 p.m.

PRINCESS MINNIE

Deck 4, Balcony - 12:00 p.m.

CHARACTER DANCE PARTY

Lobby Atrium - 1:15 p.m.

STITCH

Deck 4, Balcony
1:45 p.m. & 2:45 p.m.

CAPTAIN HOOK & MR SMEE

Deck 4, Balcony - 2:15 p.m.

CHIP & DALE

Deck 4, Balcony - 4:45 p.m.

GOOFY

Preludes - 5:15 p.m. & 9:45 p.m.

MINNIE MOUSE

Deck 4, Balcony - 5:15 p.m.,
7:15 p.m. & 9:30 p.m.

DAISY DUCK

Preludes - 5:45 p.m.

CINDERELLA

Lobby Atrium (V) - 7:15 p.m.

BELLE

Lobby Atrium (V) - 7:45 p.m.



(H) Hallway - (S) Starboard Side - (P) Port Side - (V) Vestibule

Don't forget your Camera to capture those magical moments!

For details of daily Disney character appearances, refer to the character line up on Navigator Grid, or the digital character board in the Lobby Atrium.

IMPORTANT NUMBERS

Fire/Security: 7-3001
Medical Emergency: 7-3000
Health Center: 7-1923

YOUTH ACTIVITIES THEMED EXPERIENCES

CLUBHOUSE SERIES
focuses on movement and features content which appeals to younger children.

JUMP UP! SERIES
includes large group games & movement-oriented activities.

IN THE SPOTLIGHT SERIES
focuses on children's stage presence with lots of activities and enthusiasm.

STORYBOOK SERIES
is designed with a strong connection to the Disney classic stories.

CREATE & INVENT SERIES
will have a tactile focus allowing children to create and admire their work.

SOLVE IT! SERIES
are less active, but will challenge children with problem/solutions-based activities.

ON YOUTH ACTIVITIES OPEN HOUSE

A non-secured program with activities for families, adults and children of all ages to enjoy together.

SHIP DIRECTORY

YOUTH ACTIVITIES

DISNEY'S OCEANEER CLUB	DECK 5, MID	9:00 AM - 12:00 MID
DISNEY'S OCEANEER LAB	DECK 5, MID	9:00 AM - 12:00 MID
EDGE	DECK 13, MID	9:00 AM - 1:00 AM
VIBE	DECK 4, FWD	10:00 AM - 2:00 AM
IT'S A SMALL WORLD NURSERY	DECK 5, MID	9:00 AM - 11:30 PM

POOLS & MORE

* Children under 12 must have adult supervision in pool areas..

AQUADUCK	DECK 12, MID	9:00 AM - 10:00 PM
AQUALAB	DECK 12, AFT	10:00 AM - 6:00 PM
DONALD'S POOL	DECK 11, MID	9:00 AM - 6:00 PM
		8:00 PM - 10:00 PM
MICKEY'S POOL	DECK 11, MID	6:00 AM - 11:00 PM
MICKEY'S SLIDE	DECK 11, MID	9:00 AM - 6:00 PM
NEMO'S REEF	DECK 11, MID	9:00 AM - 6:00 PM
QUIET COVE POOL (18+)	DECK 11, FWD	6:00 AM - 12:00 MID
SATELLITE FALLS	DECK 13, FWD	6:00 AM - 8:00 PM

RECREATION

GOLF/SPORTS SIMULATORS	DECK 13, AFT	9:00 AM - 6:00 PM
GOOFY GOLF	DECK 13, AFT	8:00 AM - 10:00 PM
GOOFY'S SPORTS DECK	DECK 13, AFT	8:00 AM - 6:00 PM
MIDSHIP DETECTIVE AGENCY	DECKS 2 & 5, MID	9:00 AM - 10:00 PM
PORT ADVENTURES DESK	DECK 5, MID	10:00 AM - 12:00 PM
		2:00 PM - 5:00 PM
		7:00 PM - 8:30 PM
SENSES FITNESS CENTER (18+)	DECK 11, FWD	6:30 AM - 10:00 PM

GENERAL INFORMATION

ARR-CADE	DECK 11, AFT	24 HOURS
DISNEY VACATION CLUB	DECK 4, MID	9:00 AM - 11:30 AM
		2:30 PM - 10:00 PM
GUEST SERVICES	DECK 3, MID	24 HOURS
MEDICAL HEALTH CENTER	DECK 1, FWD	9:30 AM - 11:00 AM
		4:30 PM - 7:00 PM
ONBOARD SALES DESK	DECK 4, MID	9:00 AM - 12:00 PM
		2:00 PM - 6:00 PM
		7:30 PM - 10:00 PM

PORT & SHOPPING DESK	DECK 4, MID	
PRELUDES	DECK 3, FWD	2:30 PM - 3:15 PM
		5:45 PM - 6:30 PM
		8:00 PM - 8:45 PM
SENSES SPA AND SALON	DECK 11, FWD	8:00 AM - 10:00 PM
SHUTTERS PHOTO GALLERY	DECK 4, MID	10:00 AM - 11:00 PM
SHUTTERS DIGITAL	DECK 4, MID	24 HOURS

SHOPPING

BIBBIDI BOBBIDI BOUTIQUE	DECK 5, MID	9:00 AM - 9:00 PM
MICKEY'S MAINSAIL	DECK 3, FWD	9:30 AM - 11:00 PM
QUACKS	DECK 11, MID	10:00 AM - 4:00 PM
SEA TREASURES	DECK 3, FWD	9:30 AM - 11:00 PM
VISTA GALLERY	DECK 4, MID	10:00 AM - 10:00 PM
WHITE CAPS	DECK 3, FWD	9:30 AM - 11:00 PM
WHOZITS & WHATZITS	DECK 11, MID	10:00 AM - 4:00 PM

DINNER MENU
 Animator's Palate: Captain's Gala
 Enchanted Garden: Captain's Gala
 Royal Court: Captain's Gala
 Dining Times: 5:45 p.m. & 8:15 p.m.

DRINK OF THE DAY
 High Tide (Alcoholic)
 Passion Cream Freeze (Non Alcoholic)

WEATHER FORECAST
 Today: Sunny High: 78°F/26°C
 Tomorrow: Sunny High: 72°F/22°C

Evening Attire: Semi Formal

DINING & LOUNGES

BREAKFAST

CABANAS CONTINENTAL	DECK 11, AFT	7:00 AM - 7:30 AM
CABANAS	DECK 11, AFT	7:30 AM - 11:30 AM
ENCHANTED GARDEN	DECK 2, MID	9:00 AM - 11:00 AM
ROYAL COURT	DECK 3, MID	8:30 AM - 9:30 AM

LUNCH

CABANAS	DECK 11, AFT	11:45 AM - 2:00 PM
FILLMORE'S FAVORITES	DECK 11, MID	11:00 AM - 6:00 PM
LUIGI'S PIZZA	DECK 11, MID	11:00 AM - 6:00 PM
ROYAL COURT	DECK 3, MID	12:00 PM - 1:30 PM
TOW MATER'S GRILL	DECK 11, MID	11:00 AM - 11:00 PM

DINNER

ANIMATOR'S PALATE	DECK 3, AFT	5:45 PM & 8:15 PM
ENCHANTED GARDEN	DECK 2, MID	5:45 PM & 8:15 PM
ROYAL COURT	DECK 3, MID	5:45 PM & 8:15 PM
CABANAS TABLE SERVICE	DECK 11, AFT	6:30 PM - 8:30 PM
PALO (18+) (RESERVATIONS REQ. & NON. FEE APPLIES)	DECK 12, AFT	6:00 PM - 8:30 PM
REMY (18+) (RESERVATIONS REQ. & NON. FEE APPLIES)	DECK 12, AFT	6:00 PM - 8:30 PM

LATE NIGHT SNACKS

LA PIAZZA (18+)	DECK 4, AFT	10:45 PM - 11:45 PM
LUIGI'S PIZZA	DECK 11, MID	9:30 PM - 12:30 AM

ADDED FEATURES

BEVERAGE STATION	DECK 11, MID	24 HOURS
EYE SCREAM	DECK 11, MID	11:00 AM - 11:00 PM
ROOM SERVICE	DIAL 0	24 HOURS

ENTERTAINMENT - LOUNGES - BARS

Adults must be 21 and older to consume alcoholic beverages.

BON VOYAGE	DECK 3, MID	10:00 AM - 11:30 PM
COVE BAR (18+)	DECK 11, FWD	10:00 AM - 11:00 PM
COVE CAFE (18+)	DECK 11, FWD	7:00 AM - 12:00 MID
CURRENTS (18+)	DECK 13, FWD	10:00 AM - 11:00 PM
D LOUNGE	DECK 4, MID	SHOWTIMES
FROZONE TREATS	DECK 11, MID	10:00 AM - 10:00 PM
LA PIAZZA (18+ AFTER 9:00 P.M.)	DECK 4, AFT	4:00 PM - 12:00 MID
MERIDIAN (18+)	DECK 12, AFT	10:00 AM - 12:00 MID
O'GILLS PUB (18+ AFTER 9:00 P.M.)	DECK 4, AFT	12:00 PM - 12:00 MID
O'OH LA LA (18+)	DECK 4, AFT	5:30 PM - 12:00 MID
OUTLOOK	DECK 14, MID	SUNSET TIMES
SKYLINE (18+)	DECK 4, AFT	5:30 PM - 12:30 AM
THE TUBE (18+ AFTER 9:00 P.M.)	DECK 4, AFT	9:30 PM - 2:00 AM
VISTA CAFE	DECK 4, MID	7:00 AM - 11:00 PM
WAVES	DECK 12, AFT	10:00 AM - 6:00 PM

Consumers who order raw or partially cooked, ready-to-eat food of animal origin, are hereby informed that the food is not sufficiently cooked to ensure its safety.

PRINCESS GATHERING

Don't miss your chance to see this Royal gathering today in the Lobby Atrium and don't forget your camera to capture those magical moments.

11:00 a.m.

CHARACTER DANCE PARTY

Put your dancing shoes on and join some of your favorite Disney Friends in the Lobby Atrium, Deck 3, Midship for fun and dancing.

1:15 p.m.

