

# PERSONAL NAVIGATOR



TUESDAY, MARCH 18, 2014

Sunrise: 6:53 a.m. Sunset: 6:58 p.m.  
Evening Attire: Cruise Casual  
All Ashore: 1:00 p.m. All Aboard: 5:45 p.m.

Today: Partly Cloudy High: 80°F/27°C  
Tomorrow: Partly Sunny High: 82°F/28°C

COSTA MAYA, MEXICO

## Disney WISHES

On the eve of their graduation, three best friends go on a magical journey down the wishing well. A host of Disney characters help them discover the connection between children who are becoming adults, and adults who stay in touch with being a kid at heart.

**Walt Disney Theatre  
Deck 3 & 4, Forward  
6:15 p.m. & 8:30 p.m.**



As a courtesy to all Guests, we kindly advise that the saving of seats is **not** permitted in the Walt Disney Theatre.



Assistance available at the entrance to the Walt Disney Theatre 30 minutes prior to show time.



## Costa Maya Port Information

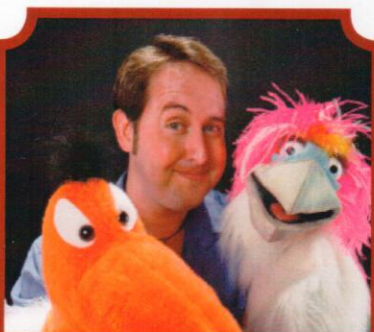
Costa Maya is a tourist region located on the Yucatán Peninsula 100 miles south of Playa del Carmen near the border of Belize in Mexico. Comprised of two small villages, Mahahual and Xcalak, Costa Maya provides a picture-perfect getaway the entire family is sure to love.

Early Mayans were predominant in the area from 200 B.C. to 900 A.D. In the 16th century, English pirates ravaged the coast and battled the Spanish for control of the region. At the end of the 19th century, the Mexican Navy took over the land. A treaty with Britain was signed soon after limiting the territorial rights of Mexico, thereby forcing Mexico to build a new trade port in Xcalak.

By the 1950's, the economy was flourishing as businesses - including stone and wood construction companies - made the area a supply center for the region. Steady growth continued until the mid-1990's when the government outlined a plan to make Costa Maya a tourist destination. Today, tourism is Costa Maya's main economic revenue stream and it's easy to understand why, thanks to the island's plethora of unspoiled natural beauty that has remained untouched for thousands of years.

### DOCKING

The ship will dock at the Puerto Costa Maya, located approximately 1/2 mile north of Mahahual.



### ADULT VARIETY ACT

Featuring the  
Comedy & Ventriloquism  
of Kevin Johnson, as he  
entertains you in this adult  
exclusive show.

**The Tube,  
Deck 4, Aft,  
10:30 p.m.**

## Don't Miss:

### Disney Animation: Persistence of Vision

**D Lounge, Deck 4, Midship - 9:15 a.m. & 4:00 p.m.**  
Go behind the scenes at Walt Disney Animation Studios and learn the principles that make animation work, and try your hand at creating your own easy animation demonstration in this fun and fascinating enrichment program.

### Mexico Shopping Highlights

**Buena Vista Theatre, Deck 4 & 5, Midship - 11:00 a.m.**  
Join your Port & Shopping guides for last minute shopping tips on Costa Maya and Cozumel. Learn where to find the best Mexican vanilla, incredible silver, exotic gemstones and swiss timepieces, followed by a raffle to win a Pearl Necklace!

### 90's Music Trivia (18+)

**O'Gills Pub, Deck 4, Aft - 4:00 p.m.**  
"Strike a pose, there's nothing to it..." - Know that song? Then come and put your 90's music knowledge to the test!

### IMPORTANT NOTICE

While in port today, please be sure to stay on ship's time, as local time will differ.

Disney Cruise Line

PORT ADVENTURES

Please check your tour tickets for meeting times and locations.  
Visit the Port Adventures Desk, Deck 5, Midship for any questions.

## DINNER MENU

Animator's Palate: Prince & Princess Menu  
Enchanted Garden: Prince & Princess Menu  
Royal Court: Prince & Princess Menu

## DRINK OF THE DAY

Key Lime Margarita (Alcoholic)  
Cranberry NO-Jito (Non Alcoholic)

### IMPORTANT NUMBERS

Fire/Security: 7-3001  
Medical Emergency: 7-3000  
Health Center: 7-1923



# FUN FOR ALL AGES HIGHLIGHTS



## WAKE UP WITH DISNEY JUNIOR

*D Lounge, Deck 4, Midship - 8:30 a.m.*

What happens when you experience unlimited fun with your favorite Disney Junior shows? You get an exciting dance party designed especially for preschoolers ages seven and under.



## DISNEY VACATION CLUB GROUP PREVIEW

*The Tube, Deck 4, Aft - 10:15 a.m.*

Want to learn more about taking magical vacations year after year? Please see a Disney Vacation Club representative on Deck 4, Midship, or call 7-2805 from your stateroom phone for more information about our interactive group presentation.



## DISNEY CHANNEL ON DECK

*Deck Stage, Deck 11, Midship - 11:00 a.m.*

Don't change that channel! It's time for a Disney Channel afternoon poolside! Your cruise staff will host an exciting day of games and contests in between your favorite Disney Channel shows! So sit back, relax, and enjoy the sun!

## PLAYHOUSE D LOUNGE

*D Lounge, Deck 4, Midship - 5:00 p.m.*

Calling our youngest of cruisers! Here is a special playtime that is just for you. Come meet new friends; and join in on the fun as your Cruise Staff team takes you through interactive activities made just for you!

## WHO AM I?

*The Tube, Deck 4, Aft - 7:30 p.m.*

Join your Cruise Staff in a fun and hilarious game where our panel has to guess who they are.

## FAMILY FUSION

*D Lounge, Deck 4, Midship - 9:45 p.m.*

Bring the entire family and test your Disney knowledge in the high-tech interactive game show, Family Fusion.

## FAMILY SUPERSTAR KARAOKE

*D Lounge, Deck 4, Midship - 11:15 p.m.*

Join your Cruise Staff in D Lounge tonight and sing along to your favorite song - fun for everyone.



# ADULT ACTIVITY HIGHLIGHTS



## SENSES SPA FITNESS CLASSES & SEMINARS

*Sunrise Stretch* - Donald's Pool - 7:00 a.m.

*Fab Abs* - Donald's Pool - 7:30 a.m.

*Body Sculpt Boot Camp* (Nom. Fee) - Senses Fitness Center - 9:00 a.m.

*Tongue & Pulse Analysis* - Senses Spa & Salon - 9:15 a.m.

*Burn Fat Faster* - Senses Spa & Salon - 10:00 a.m.

*Back Pain Solutions* - Senses Spa & Salon - 11:00 a.m.

*Pathway to Yoga* - Senses Fitness Center - 4:00 p.m.

*Complimentary Footprint Analysis* - Senses Spa & Salon - 5:30 p.m.

## TASTING CLASSES

*Chocolate & Liquor Tasting* (21+) - Ooh La La - 11:15 a.m.

*Italian Cocktail Tasting* (21+) - La Piazza - 4:45 p.m.

*Whiskey Tasting* (21+) - Meridian - 10:30 p.m.

Please make reservations for tastings at Guest Services for a nominal fee.

Tasting Seminars are only for Guests 21 and Older.

## CLUB 18\*21 - SOCIAL

*Cove Cafe, Deck 11, Forward - 11:45 a.m.*

## CLUB 18\*21 - ARR-CADE SOCIAL

*Arr-cade, Deck 11, Aft - 5:00 p.m.*

## CLUB 18\*21 - MIXER

*The Tube, Deck 4, Aft - 10:00 p.m.*

Come to join fellow cruisers your own age at our exclusive Club 18\*21 event.

## ART OF THE THEME SHOW TOUR

*Pre-Book at Guest Services, Deck 3, Midship*

Join us on a guided ship tour and discover the key ingredients that make the Disney Fantasy cruise ship one-of-a-kind.



## POP!

*The Tube, Deck 4, Aft - 10:00 p.m.*

Have you been told you are full of useless information about pop culture? If the answer is "Yes", then you have what it takes to play the high energy game show all about the world of Pop!

## \$5,000 MEGA JACKPOT BINGO

**D Lounge, Deck 4, Midship**

**Card Sales - 10:45 a.m.**

**Game Starts - 11:00 a.m.**

Don't miss your chance to take home big money! 4 CASH prize games and great raffle prizes to be won! Complete the fourth game in 46 numbers or less and win the \$5,000 Mega Jackpot! PLUS a chance to win a pair of Sophia Fiori Midnight Sapphire Stud Earrings!

## DCL GIFT PACK GIVEAWAY BINGO

**D Lounge, Deck 4, Midship**

**Card Sales - 7:15 p.m.**

**Game Starts - 7:30 p.m.**

Four cash prize games and four exclusive Disney Cruise Line Gift Packs to be won. The jackpot continues to grow and could go at any time!



# YOUTH ACTIVITY HIGHLIGHTS

## DINE & PLAY

A convenience for families dining at 8:15 p.m., our Youth Activities Counselors will be available at 9:15 p.m. at the entrance of Royal Court, Enchanted Garden and Animator's Palate dining rooms to bring registered children to join the fun in the Youth Activity areas.



Deck 5, Midship (7-1440)  
(3-12 years old)

9:00 a.m. - 12:00 mid

### ALOHA LUAU

9:15 a.m.

It's party time, Hawaiian style! Come join us for a Luau experience and learn how to dance like Lilo & Stitch.

### PLUTO'S PAJAMA PARTY

9:15 p.m.

Bring the little ones in their pajamas but there will be anything but sleep when Pluto and friends host the ultimate slumber party!



Deck 5, Midship (7-1445)  
(3-12 years old)

9:00 a.m. - 12:00 mid

### MAGIC SHOW

9:30 a.m.

The Magnificent Magician will demonstrate to you some of the best known magic tricks on the sea.

### GET THE HOOK

10:15 p.m.

A villainous villain has stolen Captain Hook's prized golden hook. Become a member of the Top Deck Detective Agency and help solve the clues to retrieve Hook's hook.



Deck 13, Midship (7-9743)  
(11-14 years old)

9:00 a.m. - 1:00 a.m.

### CRAFT CORNER

12:00 p.m.

Imagination is the key. It's time to get creative and put your crafty skills to use!

### THAT'S HILARIOUS

7:30 p.m.

Ever wanted to show off your comedy skills? Then be a part of the cast for the crazy improv show "That's Hilarious" and put on a live show for your friends.



Entrance on Deck 4, Forward (7-9418)  
(14-17 years old)

10:00 a.m. - 2:00 a.m.

### CROWNING OF THE COUCH POTATO

9:00 p.m.

Do you think you know your movies, TV and commercials? Well it's time to test your knowledge on all the recent releases.

### BRING IT!

12:30 a.m.

How much do you think you know? Test your knowledge in our game show where you will be pitted head to head.

# BUENA VISTA THEATRE

Deck 4 & 5, Midship  
Today's Movies

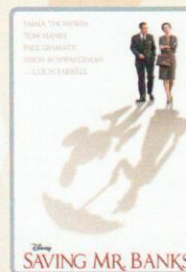
## SING-A-LONG



8:00 a.m.

Duration: 1 hr 48 mins

Rating: PG

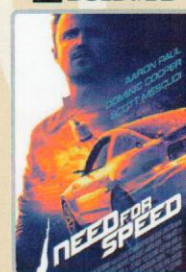


2:00 p.m.

Duration: 2 hrs 5 mins

Rating: PG-13

## DOLBY 3D



5:15 p.m. & 8:15 p.m.

Duration: 2 hrs 10 mins

Rating: PG-13

## DOLBY 3D



11:00 p.m.

Duration: 1 hr 51 mins

Rating: PG-13



Bring the family out to this interactive dance party featuring The Three Amigos. We will party with Donald Duck, learn Salsa, Merengue and have a Latin good time!

**D Lounge,**  
**Deck 4, Midship,**  
**10:15 p.m.**



Hop onboard and hit the dance floor as we take you on a ride through the charts, partying it up to some of the hottest British hits!

**The Tube (18+),**  
**Deck 4, Aft,**  
**11:00 p.m.**

## YOUTH ACTIVITIES OPEN HOUSE

Open House is an opportunity for all to come and participate in a variety of exciting activities and free time in the Oceaneer Club, Oceaneer Lab, It's A Small World Nursery, Vibe and Edge throughout the cruise. During these times secured programming will still be offered in the other venue for those looking to check their children into care.

Disney's Oceaneer Lab: 1:00 p.m. - 2:30 p.m.  
Disney's Oceaneer Club: 9:00 a.m. - 10:00 a.m.  
Vibe: 10:00 a.m. - 11:00 a.m. & 6:30 p.m. - 8:30 p.m.  
Edge: 9:00 a.m. - 10:00 a.m. & 5:00 p.m. - 6:30 p.m.



# MORE TO ENJOY WHILE ONBOARD

## PORT AND SHOPPING INFORMATION

Cozumel is the largest tax and duty free shopping port in the Western Caribbean find out why at the Mexico Shopping Highlights Talk at 11:00 a.m. Buena Vista Theatre, Deck 4, Midship. Learn about everything from Vanilla to Diamonds & Swiss Time Pieces. All who attend will receive a free Charm and the chance to win a Pearl Necklace!

## EASTERN, WESTERN OR SOUTHERN CARIBBEAN

Set your compass for the Caribbean in 2014! Disney Cruise Line offers a variety of 7-night sailings to exotic ports in the Eastern, Western or Southern Caribbean. Visit the Onboard Sales Desk to learn more about our special onboard booking offer.

## DISNEY VACATION CLUB® GROUP PREVIEW

Want to learn more about taking magical vacations year after year? Please see a Disney Vacation Club representative on Deck 4, Midship, or call 7-2805 from your stateroom phone for more information about our interactive group presentation.

## ONBOARD AIRLINE CHECK IN

If you would like to have your boarding passes printed for you onboard and have your luggage taken to the airport for you, register by midnight tomorrow. If you have a Disney Cruise Line airport transfer to Orlando International Airport and fly with one of the participating airlines, stop at Guest Services, Deck 3, Midship to register.

## ARR-CADE

Where can you be a ninja, play the guitar like a rock star, race a car down the streets of Tokyo and along the way WIN some great prizes? Arr-CADE located Deck 11, Aft, where the pirates play.

## runDisney® CASTAWAY CAY 5K REGISTRATION (10+)

Sign up today for the runDisney: Castaway Cay 5K! Please visit the Port Adventures Desk or the Guest Services Desk to register at anytime prior to our arrival at Disney's Castaway Cay. Please note that runners must be 10 years of age or older to participate.

## Disney Cruise Line. PORT ADVENTURES

Welcome to Costa Maya, a secluded destination on Mexico's stunning Riviera Maya! The port of Costa Maya is booming and there are many amazing Port Adventures to choose from. There is limited availability on tours, so stop by the Port Adventures Desk, Deck 5, Midship, to reserve your place. Don't forget to plan ahead for Castaway Cay, where only a few Stingray encounters remain available.

## SHOPPING

### 2014 DISNEY CRUISE LINE MERCHANDISE

Step into Mickey's Mainsail today and commemorate your Disney cruise with a wide selection of 2014 Disney Cruise Line merchandise. From t-shirts to photo albums and more, you are sure to find a special souvenir for the whole family. Deck 3, Forward.

### THE PIRATES LEAGUE

Shiver me timbers! Pirates are invading the Bibbidi Bobbidi Boutique tomorrow and are looking to transform you into a swashbuckling pirate to join their crew. Make your reservations by visiting Bibbidi Bobbidi Boutique, Deck 5, Midship or dialing extension 7-9438. Limited space available.

### DARREN WILSON ART AND MORE!

Visit the Vista Gallery today where you can admire beautiful artwork featuring some of your favorite Disney characters created by celebrated artists such as Darren Wilson. From original canvas paintings to smaller print copies, the Vista Gallery offers the opportunity for you to take some of the magic home! Deck 4, Midship.

### PIRATE PARTY GEAR

From eye patches and swords to Pirate Mickey Ear Hats, Mickey's Mainsail has all the pirate loot you need to gear up for Pirate Night! Deck 3, Forward.

### STYLISH TIMEPIECES BY PHILIP STEIN

Take the time to visit White Caps and discover the wide selection of luxury brand timepieces available including sophisticated designs from Philip Stein. With elegant pieces from the Signature Collection and the unique Sleep Bracelet designed to improve your quality of sleep, Philip Stein provides the wearer with a sense of style and serenity. White Caps, Deck 3, Forward.

Due to port regulations, when the ship is docked, the stores will remain closed.



**SENSES**  
SPA & SALON

## SALON TASTER SPECIAL

- Scalp Massage
- European Facial
- Hand Treatment
- Sunglow Makeover
- Conditioning Hair Treatment
- Eye Collagen Treatment
- Foot & Ankle Massage
- Neck & Shoulder Massage

Three for 99.00  
Five for 119.00  
All Eight for 139.00

## TODAY'S SHOPPING SPECIAL

Stop by White Caps to try on the world's most memorable white diamond pieces and commemorate your cruise.

White Caps, Deck 3, Forward.

**WHITECAPS**



## Shutters PHOTO BOOK

Visit Shutters today and turn your magical vacation memories into an impressive keepsake, a personal one of a kind Photo Book.

Fill every page with memories of your cruise vacation, during this Festive Season.

Orders close at 10:30 p.m. on the last day of the cruise. Supplies are limited.

## IMPORTANT INFORMATION

### Security Notice

All Guests (including children) who wish to disembark the ship are required to present their Key to the World card at the gangway. A photo ID is also required for those Guests who are 18 years of age or older. Guests under the age of 18 are required to have a parent, guardian or other responsible adult sign an authorization form at the Guest Service Desk if they wish to go ashore unaccompanied or with any adult from another stateroom.

### Sunscreen/Insect Repellent Advisory

Use sunscreen and protect against mosquito. Use sunscreen first and protect against mosquito borne illnesses by applying insect repellent on

top of sunscreen when going ashore.

### Cold and Flu Reminder

Please wash hands frequently and thoroughly, particularly before meals. Contact the Health Center by dialing 7-1923, should anyone in your party become ill.

### Corridor Quiet Hours

As a courtesy to all our Guests, please recognize quiet hallway hours from 10:00 p.m. to 8:00 a.m.

### Inclement Weather

For the safety of all Guests, outdoor events may be changed due to unforeseen weather conditions.

### Environmental Message

With Disney's commitment to the Environment, please refrain from throwing anything over the Ship's side. Thank you!

### No Reserved Seats Policy

As a courtesy to all our Guests, we kindly advise that the saving of seats is not permitted in the Walt Disney Theatre, and the saving of the sun loungers is not permitted on Deck 11, 12, and 13. Items left unattended will be returned to lost and found at Guest Services, Deck 3 Midship.

### Smoking

For the comfort of our guests, the following areas are designated as smoking areas:  
• Deck 13, forward, port side by Currents  
• Deck 12, aft, port side outdoor area that is accessible through the Meridian Lounge  
• Deck 4, aft, port side from 6:00 p.m. to 6:00 a.m. only (all of Deck 4 is non-smoking from 6:00 a.m. to 6:00 p.m.) Smoking is prohibited inside all guest staterooms and on stateroom verandahs. Guest found smoking in their staterooms or on their verandahs will be charged a \$250 stateroom recovery fee.





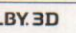


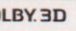
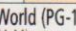




### Walt Disney Theatre

Theatrical performances may use artificial fog, strobe lights, pyrotechnics and other special effects. For the safety of our performers and the comfort of those around you, the use of any photography, video recording device or any electronic equipment is prohibited.

### Verandah Safety

Please do not leave any combustible materials on your balcony when not present in your stateroom for safety reasons.



Morning	8:30	8:45	9:00	9:15	9:30	9:45	10:00	10:15	10:30	10:45	11:00	11:15	11:30	11:45	12:00	12:15	12:30	12:45	1:00	1:15	1:30					
FUNNEL VISION	The Jungle Book (G) Funnel Vision										Disney Channel on Deck Funnel Vision				Hercules (G) Funnel Vision											
BUENA VISTA THEATRE	Frozen: Sing-A-Long (PG) Duration: 1 Hour 48 Minutes < Starts at 8:00 a.m.										Mexico Shopping Highlights															
CHARACTERS	Daisy Dk 4, Balcony				Princess Anna Preludes				Princess Gathering Lobby Atrium				Tinker Bell Lobby Atrium (V)		Minnie Dk 4, Balcony		Tinker Bell Lobby Atrium (V)									
FUN FOR ALL AGES	 D Lounge		Family Crafts: 3D Crafts O'Gills Pub				Paper Plane Making La Piazza		Bingo Pre Sales		\$5,000 Mega Jackpot  D Lounge		Board Games Available in O'Gills Pub													
	Open House It's A Small World Nursery < Starts at 8:00 a.m.		 D Lounge				Toddler Time Goofy's Sports Deck						Port Adventures - Please check your tickets for meeting times and locations													
ADULTS	Friends of Bill W. Outlook		Tongue & Pulse Analysis Senses Spa & Salon						 The Tube - Group Preview				Chocolate & Liquor Tasting (21+) Ooh La La		Last Minute Shopping Advice Gangway											
	Boot Camp (Nom. Fee) Senses Fitness Center										Art of The Theme Show Tour Pre-Book at Guest Services						Mexico Shopping Highlights Buena Vista Theatre		Club 18*21 - Social Cove Cafe							
VIBE 14-17 YEARS OLD											Youth Activities Open House				Dream Now! Sea How! - Theatrical				Sun Deck Fun							
EDGE 11-14 YEARS OLD											Youth Activities Open House				Wii Challenge				Game Challenge				Craft Corner		Scattergories	
OCEANEER LAB 3-12 YEARS OLD											Magic Show				GAGA Ball		Craft Corner		Wii Challenge						Youth Activities Open House	
OCEANEER CLUB 3-12 YEARS OLD											Youth Activities Open House								Game Challenge		Magic PlayFloor				Parachute Games	
											Aloha Luau						Journey to Neverland		Mickey's Puzzle Playtime				Lunch			
Afternoon	1:45	2:00	2:15	2:30	2:45	3:00	3:15	3:30	3:45	4:00	4:15	4:30	4:45	5:00	5:15	5:30	5:45	6:00	6:15	6:30	6:45					
FUNNEL VISION	Tangled (PG) Funnel Vision										High School Musical - (TV-G) Funnel Vision															
BUENA VISTA THEATRE	Saving Mr. Banks (PG-13) Duration: 2 Hours 5 Minutes										Need for Speed (PG-13)  Duration: 2 Hours 10 Minutes															
CHARACTERS											Mickey Lobby Atrium (P)				Princess Anna Lobby Atrium (V)		Donald Dk 4, Balcony									
FUN FOR ALL AGES					Family Crafts: Pipe Cleaner Creations La Piazza								Playhouse D Lounge D Lounge								 Walt Disney Theatre					
									 D Lounge				Live Music with Ash & Mike Lobby Atrium													
													Live Guitar with Tony Delaney Deck 12, Forward													
ADULTS					Informal Card Play O'Gills Pub				90's Music Trivia O'Gills Pub				Xbox® Kinect O'Gills Pub		Live Piano with Greg Alcock La Piazza						NCAA Basketball O'Gills Pub					
VIBE 14-17 YEARS OLD	Hold The Phone				Teen Choice				ESPN Dream Team Draft Day - Basketball				Wii Challenge				Disney Animation: Creating a Character				Open House					
EDGE 11-14 YEARS OLD	Scavenger Hunt				Anyone Can Cook: Pizza				Ice Cream Social				Youth Activities Open House				Game Challenge									
OCEANEER LAB 3-12 YEARS OLD	Youth Activities Open House								Bingo												Craft Corner					
OCEANEER CLUB 3-12 YEARS OLD	Magic PlayFloor								Detective School								Marshmallow Olympics									
	Disney Animation: Creating a Character								Play-Doh Fun												Dinner					
									Memory Wall				Magic PlayFloor								Picture This					
Evening	7:00	7:15	7:30	7:45	8:00	8:15	8:30	8:45	9:00	9:15	9:30	9:45	10:00	10:15	10:30	10:45	11:00	11:15	11:30	11:45	12:00					
FUNNEL VISION	High School Musical 2 - (TV-G) Funnel Vision										Old Dogs (PG) Funnel Vision															
BUENA VISTA THEATRE	Need for Speed (PG-13)  Duration: 2 Hours 10 Minutes										Thor: The Dark World (PG-13)  Duration: 1 Hour 51 Minutes															
CHARACTERS	Aladdin Preludes		Princess Anna Lobby Atrium (V)		Phineas & Ferb Lobby Atrium (H)				Princess Anna Lobby Atrium (V)		Phineas & Ferb Lobby Atrium (H)		Aladdin Preludes				Pluto Dk 4, Balcony		Cinderella Mickey Lobby Atrium (Dk 4, Balcony)							
FUN FOR ALL AGES	Bingo Pre Sales		DCL Gift Pack Giveaway  D Lounge				 Walt Disney Theatre						 D Lounge		 D Lounge		Viva Fiesta D Lounge		Family Superstar Karaoke D Lounge							
	Family Dance Party The Tube		Who Am I? The Tube								Live Music with Ash & Mike Lobby Atrium				Live Music with Ash & Mike Lobby Atrium											
ADULTS	Live Piano with Greg Alcock La Piazza										NCAA Basketball O'Gills Pub (Subject to satellite availability)															
VIBE 14-17 YEARS OLD	Youth Activities Open House										Crowning of the Couch Potato				Anyone Can Cook: Pizza				Mix and Match							
EDGE 11-14 YEARS OLD	That's Hilarious										Karaoke				Picture This				Movie Time							
OCEANEER LAB 3-12 YEARS OLD	Super Sloppy Science										Magic PlayFloor				Get the Hook				Game Challenge							
OCEANEER CLUB 3-12 YEARS OLD	Face Paint Time				Bingo		Dance Party								Movie Time											
	Game Challenge		Once Upon a Time						Pluto's Pajama Party																	

Symbol for activities that will be repeated during the cruise



Youth Activities Open House



FOLD

Fold along the dotted lines and take me with you so you don't miss any of the fun!

FOLD

IN THE SPOTLIGHT SERIES  
SOLVE IT! SERIES

JUMP UP! SERIES  
CREATE & INVENT SERIES

CLUBHOUSE SERIES  
STORYBOOK SERIES



TUESDAY, MARCH 18, 2014 - COSTA MAYA

# BUENA VISTA THEATRE

Deck 4 & 5, Midship

SING-A-LONG

DOLBY 3D

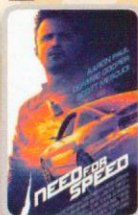
DOLBY 3D



8:00 a.m.  
Duration:  
1 hr 48 mins  
Rating: PG



2:00 p.m.  
Duration:  
2 hrs 5 mins  
Rating: PG-13



5:15 p.m. & 8:15 p.m.  
Duration:  
2 hrs 10 mins  
Rating: PG-13



11:00 p.m.  
Duration:  
1 hr 51 mins  
Rating: PG-13

## Character Appearances

### DAISY DUCK

Deck 4, Balcony - 9:15 a.m.

### PRINCESS ANNA OF ARENDELLE

Preludes - 9:30 a.m. & 11:00 a.m.  
Lobby Atrium (V) - 5:30 p.m.,  
7:30 p.m. & 9:30 p.m.

### PRINCESS GATHERING

Lobby Atrium - 10:00 a.m.

### PRINCESS SOFIA

Deck 4, Balcony  
10:15 a.m. & 11:30 a.m.

### TINKER BELL

Lobby Atrium (V)  
10:30 a.m. & 11:30 a.m.

### PRINCESS MINNIE

Deck 4, Balcony - 11:00 a.m.

### MICKEY MOUSE

Lobby Atrium (P) - 5:00 p.m.  
Deck 4, Balcony  
7:45 p.m. & 10:00 p.m.

### PRINCESS TIANA

Deck 4, Balcony - 5:15 p.m.  
Preludes - 9:30 p.m.

### CINDERELLA

Lobby Atrium (P) - 5:30 p.m.  
Lobby Atrium - 7:30 p.m.

### PHINEAS & FERB

Lobby Atrium (H) - 5:30 p.m.,  
7:45 p.m. & 9:45 p.m.

### DONALD DUCK

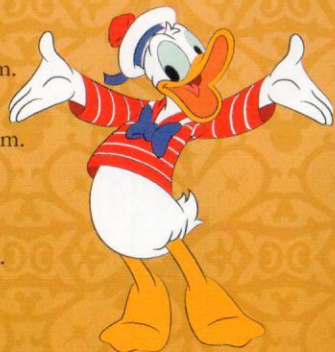
Deck 4, Balcony  
5:45 p.m. & 9:30 p.m.

### PLUTO

Deck 4, Balcony - 7:15 p.m.

### ALADDIN

Preludes - 7:15 p.m. & 10:00 p.m.



(H) Hallway - (S) Starboard Side - (P) Port Side - (V) Vestibule

For details of daily Disney character appearances, refer to the character line in your Navigator Grid or the digital character board in the Lobby Atrium.

## SHIP DIRECTORY

### YOUTH ACTIVITIES

DISNEY'S OCEANEER CLUB	DECK 5, MID	9:00 AM - 12:00 MID
DISNEY'S OCEANEER LAB	DECK 5, MID	9:00 AM - 12:00 MID
EDGE	DECK 13, MID	9:00 AM - 1:00 AM
VIBE	DECK 4, FWD	10:00 AM - 2:00 AM
IT'S A SMALL WORLD NURSERY	DECK 5, MID	9:00 AM - 11:00 PM

### POOLS & MORE

\* Children under 12 must have adult supervision in pool areas..

AQUADUCK	DECK 12, MID	9:00 AM - 10:00 PM
AQUALAB	DECK 12, AFT	10:00 AM - 6:00 PM
DONALD'S POOL	DECK 11, MID	9:00 AM - 6:00 PM 8:00 PM - 10:00 PM
MICKEY'S POOL	DECK 11, MID	6:00 AM - 11:00 PM
MICKEY'S SLIDE	DECK 11, MID	9:00 AM - 6:00 PM
NEMO'S REEF	DECK 11, MID	9:00 AM - 6:00 PM
QUIET COVE POOL (18+)	DECK 11, FWD	6:00 AM - 12:00 MID
SATELLITE FALLS	DECK 13, FWD	6:00 AM - 8:00 PM

### RECREATION

GOLF/SPORTS SIMULATORS	DECK 13, AFT	9:00 AM - 6:00 PM
GOOFY GOLF	DECK 13, AFT	8:00 AM - 10:00 PM
GOOFY'S SPORTS DECK	DECK 13, AFT	8:00 AM - 6:00 PM
MIDSHIP DETECTIVE AGENCY	DECKS 2 & 5, MID	9:00 AM - 10:00 PM
PORT ADVENTURES DESK	DECK 5, MID	9:00 AM - 1:00 PM 7:00 PM - 8:30 PM
SENSES FITNESS CENTER (18+)	DECK 11, FWD	6:30 AM - 10:00 PM

### GENERAL INFORMATION

ARR-CADE	DECK 11, AFT	24 HOURS
DISNEY VACATION CLUB	DECK 4, MID	5:00 PM - 10:00 PM
GUEST SERVICES	DECK 3, MID	24 HOURS
MEDICAL HEALTH CENTER	DECK 1, FWD	9:30 AM - 11:00 AM 4:30 PM - 7:00 PM
ONBOARD SALES DESK	DECK 4, MID	9:00 AM - 12:00 PM 5:00 PM - 6:00 PM 7:30 PM - 10:00 PM
PORT & SHOPPING DESK	DECK 4, MID	10:00 AM - 11:00 AM 7:30 PM - 8:30 PM
PRELUDES	DECK 3, FWD	5:45 PM - 6:30 PM 8:00 PM - 8:45 PM
SENSES SPA AND SALON	DECK 11, FWD	8:00 AM - 10:00 PM
SHUTTERS PHOTO GALLERY	DECK 4, MID	5:00 PM - 10:30 PM
SHUTTERS DIGITAL	DECK 4, MID	24 HOURS

### SHOPPING

BIBBIDI BOBBIDI BOUTIQUE	DECK 5, MID	9:00 AM - 9:00 PM
MICKEY'S MAINSAIL	DECK 3, FWD	9:00 AM - 12:00 PM 6:30 PM - 11:00 PM
QUACKS	DECK 11, MID	
SEA TREASURES	DECK 3, FWD	9:00 AM - 12:00 PM 6:30 PM - 11:00 PM
VISTA GALLERY	DECK 4, MID	7:00 PM - 10:00 PM
WHITE CAPS	DECK 3, FWD	9:00 AM - 12:00 PM 6:30 PM - 11:00 PM
WHOZITS & WHATZITS	DECK 11, MID	9:00 AM - 12:00 PM



## IMPORTANT NOTICE

While in port today, please be sure to stay on ship's time, as local time will differ.

**DINNER MENU**  
 Animator's Palate: Prince & Princess  
 Enchanted Garden: Prince & Princess  
 Royal Court: Prince & Princess  
 Dining Times: 5:45 p.m. & 8:15 p.m.

**DRINK OF THE DAY**  
 Key Lime Margarita (Alcoholic)  
 Cranberry No-Lito (Non Alcoholic)

**WEATHER FORECAST**  
 Today: Partly Cloudy  
 High: 80°F/27°C  
 Tomorrow: Partly Sunny  
 High: 82°F/28°C

**Evening Attire: Cruise Casual**

## DINING & LOUNGES

### BREAKFAST

CABANAS CONTINENTAL	DECK 11, AFT	7:00 AM - 7:30 AM
CABANAS	DECK 11, AFT	7:30 AM - 11:15 AM
ENCHANTED GARDEN	DECK 2, MID	8:00 AM - 10:45 AM
ROYAL COURT	DECK 3, MID	8:00 AM - 9:30 AM

### LUNCH

CABANAS	DECK 11, AFT	11:15 AM - 2:15 PM
FILLMORE'S FAVORITES	DECK 11, MID	10:30 AM - 6:00 PM
LUIGI'S PIZZA	DECK 11, MID	10:30 AM - 6:00 PM
ROYAL COURT	DECK 3, MID	12:00 PM - 1:30 PM
TOW MATER'S GRILL	DECK 11, MID	10:30 AM - 11:00 PM

### DINNER

ANIMATOR'S PALATE	DECK 3, AFT	5:45 PM & 8:15 PM
ENCHANTED GARDEN	DECK 2, MID	5:45 PM & 8:15 PM
ROYAL COURT	DECK 3, MID	5:45 PM & 8:15 PM
CABANAS TABLE SERVICE	DECK 11, AFT	6:30 PM - 8:30 PM
PALO (18+) (RESERVATIONS REQ. & NOM. FEE APPLIES)	DECK 12, AFT	6:00 PM - 8:30 PM
REMY (18+) (RESERVATIONS REQ. & NOM. FEE APPLIES)	DECK 12, AFT	6:00 PM - 8:30 PM

### LATE NIGHT SNACKS

LA PIAZZA (18+)	DECK 4, AFT	10:45 PM - 11:45 PM
LUIGI'S PIZZA	DECK 11, MID	9:30 PM - 12:30 AM

### ADDED FEATURES

BEVERAGE STATION	DECK 11, MID	24 HOURS
EYE SCREAM	DECK 11, MID	11:00 AM - 11:00 PM
ROOM SERVICE	DIAL 0	24 HOURS

### ENTERTAINMENT - LOUNGES - BARS

Adults must be 21 and older to consume alcoholic beverages.

BON VOYAGE	DECK 3, MID	10:00 AM - 11:30 PM
COVE BAR (18+)	DECK 11, FWD	10:00 AM - 11:00 PM
COVE CAFE (18+)	DECK 11, FWD	7:00 AM - 12:00 MID
CURRENTS (18+)	DECK 13, FWD	10:00 AM - 11:00 PM
D LOUNGE	DECK 4, MID	SHOWTIMES
FROZONE TREATS	DECK 11, MID	10:00 AM - 10:00 PM
LA PIAZZA (18+ AFTER 9:00 P.M.)	DECK 4, AFT	4:00 PM - 12:00 MID
MERIDIAN (18+)	DECK 12, AFT	12:00 PM - 12:00 MID
O'GILLS PUB (18+ AFTER 9:00 PM)	DECK 4, AFT	3:00 PM - 12:00 MID
OOH LA LA (18+)	DECK 4, AFT	5:00 PM - 12:00 MID
OUTLOOK	DECK 14, MID	SUNSET TIMES
SKYLINE (18+)	DECK 4, AFT	5:00 PM - 12:30 AM
THE TUBE (18+ AFTER 9:00 P.M.)	DECK 4, AFT	9:30 PM - 2:00 AM
VISTA CAFE	DECK 4, MID	7:00 AM - 10:30 PM
WAVES	DECK 12, AFT	10:00 AM - 6:00 PM

Consumers who order raw or partially cooked, ready-to-eat food of animal origin, are hereby informed that the food is not sufficiently cooked to ensure its safety.

**All Ashore: Approx. 1:00 p.m.**  
**All Aboard: 5:45 p.m.**

## IMPORTANT INFORMATION

Please check your Port Adventure tour tickets for meeting times and locations. Visit the Port Adventures Deck 5, Midship, for any questions.

## SHIP'S AGENT IN COSTA MAYA IMPORTANT NUMBERS

Sr. Marco Souza  
Carmichel, Coordinador General,  
Aconsur, Mahahual, Q. Roo, México  
Tel: 52 983 834 5674 or 521 9837005253

Fire/Security: 7-3001  
Medical Emergency: 7-3000  
Health Center: 7-1923