

PERSONAL NAVIGATOR

MONDAY, MARCH 17, 2014

Sunrise: 6:32 a.m. Sunset: 6:35 p.m.
 Evening Attire: Cruise Casual
 All Ashore: Approx: 11:15 a.m.
 Last Tender: 5:00 p.m.

Today: Partly Sunny High: 78°F/26°C
 Tomorrow: Partly Cloudy High: 80°F/27°C

GRAND CAYMAN, CAYMAN ISLANDS

SHOWTIME

FEATURING THE MAGIC & ILLUSION OF

JASON BISHOP

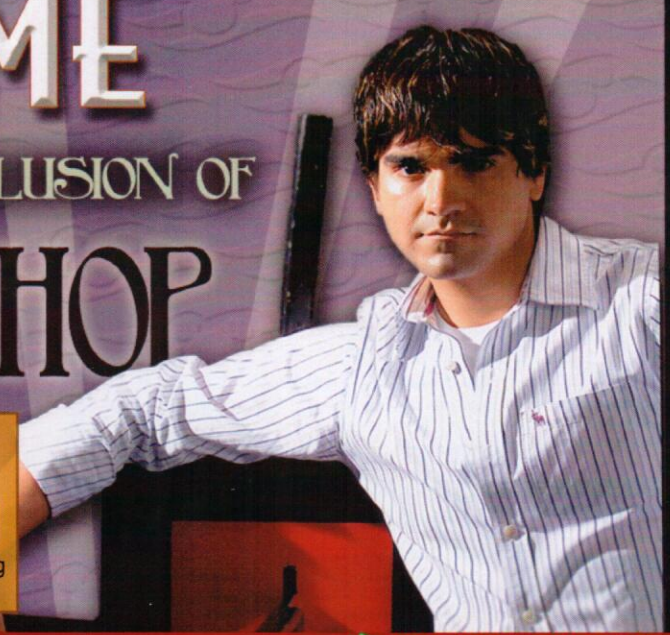
WALT DISNEY THEATRE

Deck 3 & 4, Forward

6:15 p.m. & 8:30 p.m.



As a courtesy to all Guests, we kindly advise that the saving of seats is **not** permitted in the Walt Disney Theatre.



 ST. PATRICK'S DAY 

Grand Cayman Port Information


The Cayman Islands were first sighted by European explorers in 1503, in a wayward voyage headed by Christopher Columbus. Though the two smaller islands were discovered on this fateful trip, the largest of them, Grand Cayman, would escape attention by sailors until 1655, when the area was claimed by the British. For centuries from the time of their discovery, the Cayman Islands would provide a place for ships to come ashore and rest on their journeys into the Caribbean. Crewmen on these ships would routinely replenish themselves on the meat provided by the native population of turtles.

By the 19th century, Grand Cayman was overtaken by pirates. It would take political upheaval and the establishment of a local government under British rule to transform the island into what it is today.

Discover a place that—once a welcome refuge for buccaneers—is today a treasured tourist hotspot. From sparkling surf to the bounty of local shops, whatever your pleasure, you'll find it here.

DOCKING - Please refer to Tender Letter

The ship anchors outside of the port and Guests take a tender to the dock. Tenders are small boats that provide transportation between the ship and the shore. Guests with special needs/disabilities wishing to leave the ship should check with Guest Services for accessible gangways.



FAMILY GAMESHOW

Bring the entire family and test your Disney knowledge in the high-tech interactive game show, Family Fusion.

D Lounge,
Deck 4, Midship,
10:15 p.m.

Don't Miss:

Chip-It Golf (12+)

Lobby Atrium, Deck 3, Midship - 2:30 p.m.
 It's par for the course for our Guests 12 and older to compete on our special "greens" in this fun tournament.

Disney Animation: Cartoon Physics

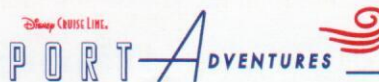
D Lounge, Deck 4, Midship - 4:00 p.m.
 Go behind the scenes at Walt Disney Animation Studios and see how flat drawings and pencil lines can come to life through basic techniques such as "Stretch and Squash", and create your own "bouncing ball" animation exercise in this entertaining and fun enrichment program.

So You Think You Know Your Family?

The Tube, Deck 4, Aft - 7:30 p.m.
 This fun-filled family game show is always full of surprises. Find out how well you know, or don't know your family!

The Quest (18+)

The Tube, Deck 4, Aft - 10:00 p.m.
 Enjoy the wildest and wackiest scavenger team event on the seven seas!



Please check your tour tickets for meeting times and locations. Visit the Port Adventures Desk, Deck 5, Midship for any questions.

DINNER MENU Animator's Palate: Pacific Rim Cuisine
 Enchanted Garden: Continental Market Cuisine
 Royal Court: French Dinner Cuisine

DRINK OF THE DAY Yellow Bird (Alcoholic)
 Lava Smoothie (Non Alcoholic)

IMPORTANT NUMBERS
 Fire/Security: 7-3001
 Medical Emergency: 7-3000
 Health Center: 7-1923

FUN FOR ALL AGES HIGHLIGHTS



JAKE & THE NEVERLAND PIRATES

D Lounge, Deck 4, Midship - 8:30 a.m.

A'Hooy there mates, Join us for an adventure in D Lounge with Jake and the Neverland Pirates.

DISNEY TRIVIA

O'Gills Pub, Deck 4, Aft - 9:15 a.m.

Navigate your way through a round of questions to test how much you really know about Disney.

DIAMOND AND GEMSTONE SEMINAR

La Piazza, Deck 4, Aft - 10:00 a.m.

Join your Port and Shopping Guides, and become an educated shopper. They will teach you about the exotic gemstones found in the Caribbean. FREE Tanzanite Earrings for all who attend and a raffle to win a Gemstone Pendant!



CHIP-IT GOLF (12+)

Lobby Atrium, Deck 3, Midship - 2:30 p.m.

It's par for the course for our Guests 12 and older to compete on our special "greens" in this fun tournament.

ST. PATRICK'S DAY TRIVIA

O'Gills Pub, Deck 4, Aft - 7:30 p.m.

Join your cruise staff to discover how much you really know about the shamrock nation.

FAMILY SUPERSTAR KARAOKE

D Lounge, Deck 4, Midship - 9:30 p.m. & 10:45 p.m.

Join your Cruise Staff in D Lounge tonight and sing along to your favorite song - fun for everyone.



FAMILY FUSION

D Lounge, Deck 4, Midship - 10:15 p.m.

Bring the entire family and test your Disney knowledge in the high-tech interactive game show, Family Fusion.



ADULT ACTIVITY HIGHLIGHTS

SENSES SPA FITNESS CLASSES & SEMINARS

Sunrise Stretch - Donald's Pool - 7:00 a.m.

Fab Abs - Donald's Pool - 7:30 a.m.

Complimentary Footprint Analysis - Senses Spa & Salon - 8:00 a.m.

Body Sculpt Boot Camp (Nom. Fee) - Senses Fitness Center - 9:00 a.m.

Facial Workshop - Senses Fitness Center - 9:15 a.m.

Group Cycling - Senses Fitness Center - 4:00 p.m.

Fitness Frenzy (13-17, Nom. Fee) - Senses Fitness Center - 7:00 p.m.



TASTING CLASSES

Cognac Tasting (21+) - Cove Cafe - 10:00 p.m.

Whiskey Tasting (21+) - Meridian - 10:30 p.m.

Please make reservations for tastings at Guest Services for a nominal fee.

Tasting Seminars are only for Guests 21 and Older.

CLUB 18*21 - MINI GOLF

Goofy Golf, Deck 13, Aft - 4:30 p.m.

CLUB
18*21

CLUB 18*21 - MIXER

The Tube, Deck 4, Aft - 10:00 p.m.

ART OF THE THEME SHOW TOUR

Pre-Book at Guest Services, Deck 3, Midship

Join us on a guided ship tour and discover the key ingredients that make the Disney Fantasy cruise ship one-of-a-kind.

THE QUEST

The Tube, Deck 4, Aft - 10:00 p.m.

Enjoy the wildest and wackiest scavenger team event on the seven seas!

80'S/90'S REMIX WITH CRUISE STAFF DJ

The Tube, Deck 4, Aft - 11:15 p.m.

Join your Cruise Staff DJ as they spin the tunes and remix the 80's and 90's!

"POT OF GOLD" JACKPOT BINGO

D Lounge, Deck 4, Midship

Card Sales - 9:15 a.m.

Game Starts - 9:30 a.m.

Top of the morning to ya, and welcome to our first session of Jackpot Bingo, with four CASH prizes to be won! Plus, everyone in attendance will receive a FREE bingo card for one of the four cash prize games. St. Patrick's Day goodies are up for grabs!

BOGO JACKPOT BINGO

D Lounge, Deck 4, Midship

Card Sales - 7:15 p.m.

Game Starts - 7:30 p.m.

That's right, it's time for Buy One Get One Free Bingo! Tonight only you can double your dollar as we play for 4 cash prizes, plus Disney Cruise Line exclusive prizes! The snowball cruise jackpot continues to grow and is also up for grabs!

YOUTH ACTIVITY HIGHLIGHTS

DINE & PLAY

A convenience for families dining at 8:15 p.m., our Youth Activities Counselors will be available at 9:15 p.m. at the entrance of Royal Court, Enchanted Garden and Animator's Palate dining rooms to bring registered children to join the fun in the Youth Activity areas.



Deck 5, Midship (7-1440)
(3-12 years old) **9:00 a.m. - 12:00 mid**

CRUISIN' WITH CRUSH

11:15 a.m.

Be sure to check out Disney's Oceaneer Club to see Crush when he stops by!

ONCE UPON A TIME

7:30 p.m.

Join Beverly the Bookmaker for a magical, musical story time featuring a Disney Princess!



Deck 5, Midship (7-1445)
(3-12 years old) **9:00 a.m. - 12:00 mid**

PISTON CUP CHALLENGE

9:30 a.m.

It's Dinoco time and you're part of the pit crew! Design your own race car and see if you've got what it takes to end up in the Winner's Circle!

ANYONE CAN COOK: CUPCAKES

7:15 p.m.

Anyone can cook as we work together to create some of our favorite treats. From our galley to yours; join our chef as they show you how to create cupcakes!



Deck 13, Midship (7-9743)
(11-14 years old) **9:00 a.m. - 1:00 a.m.**

ESPN DREAM TEAM DRAFT DAY - BASEBALL

6:30 p.m.

Play ball! Join the "Commissioner" and engage in this interactive fantasy baseball draft unlike anything you've ever seen! Can YOU draft the greatest baseball team of All-Time?

GHOST VOYAGERS

10:15 p.m.

The ship has come upon some mysterious waters and strange things are afoot. Join a paranormal expert to help investigate the area and track down any evidence of ghostly beings on the ship.



Entrance on Deck 4, Forward (7-9418)
(14-17 years old) **10:00 a.m. - 2:00 a.m.**

VIDEO SCAVENGER HUNT

2:00 p.m.

We have a list of items for you to collect at various locations throughout the ship, first person to collect all these items wins.

PUMP IT UP

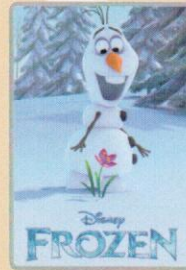
9:00 p.m.

Join us in the Fitness Center for a Teen Only workout. Meet in Vibe to join in!

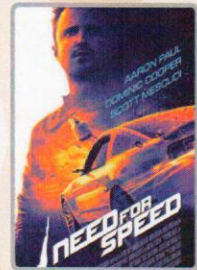
BUENA VISTA THEATRE

Deck 4 & 5, Midship
Today's Movies

DOLBY 3D



8:00 a.m.
Duration: 1 hr 48 mins
Rating: PG



1:00 p.m.
Duration: 2 hrs 10 mins
Rating: PG-13



3:30 p.m.
Duration: 1 hr 51 mins
Rating: PG-13



5:45 p.m., 8:15 p.m. & 10:45 p.m.
Duration: 2 hrs 5 mins
Rating: PG-13



Get ready for a jammin', slammin', splish splashin' good time at the new Disney Channel Poolside Jam Fest at Sea! Imagine all of your favorite Disney Channel music stars coming together for an afternoon of contests, great music, and hot videos all under the Caribbean sun!

**Deck stage,
Deck 11, Midship,
4:00 p.m.**



ADULT VARIETY ACT

Featuring the Comedy & Hypnosis of Dale K, as he entertains you in this adult exclusive show.

**The Tube (18+),
Deck 4, Aft,
10:30 p.m.**

YOUTH ACTIVITIES OPEN HOUSE

Open House is an opportunity for all to come and participate in a variety of exciting activities and free time in the Oceaneer Club, Oceaneer Lab, It's A Small World Nursery, Vibe and Edge throughout the cruise. During these times secured programming will still be offered in the other venue for those looking to check their children into care.

Disney's Oceaneer Lab: 4:00 p.m. - 6:00 p.m.
Disney's Oceaneer Club: 9:00 a.m. - 11:00 a.m.
Vibe: 10:00 a.m. - 11:00 a.m. & 6:30 p.m. - 8:30 p.m.
Edge: 9:00 a.m. - 10:00 a.m. & 5:00 p.m. - 6:30 p.m.

MORE TO ENJOY WHILE ONBOARD

PORT AND SHOPPING INFORMATION

Join Marissa and Johan at Diamond & Gemstone Seminar in La Piazza, Deck 4 Aft at 10:00 a.m. Learn what makes a Diamond sparkle, the rarity of Ammolite and why Alexandrite changes color! They will give you insider tips on shopping for gemstones in the Caribbean. Free Tanzanite Stud Earrings and a Raffle to win a Tanzanite Pendant!

ALASKA AWAITS

Take your family on an Alaskan adventure they'll never forget! Sail through magnificent fjords fed by glaciers. Discover untamed nature and walk in the footsteps of prospectors. Begin your adventure today! Visit the Onboard Sales Desk to learn more about our special onboard booking offer.

DISNEY VACATION CLUB® GROUP PREVIEW

Want to learn more about taking magical vacations year after year? Please see a Disney Vacation Club representative on Deck 4, Midship, or call 7-2805 from your stateroom phone for more information about our interactive group presentation.

ONBOARD AIRLINE CHECK IN

If you would like to have your boarding passes printed for you onboard and have your luggage taken to the airport for you, register before Wednesday. If you have a Disney Cruise Line airport transfer to Orlando International Airport and fly with one of the participating airlines, stop at Guest Services, Deck 3, Midship to register.

Connect@Sea

We are now offering a NEW and improved Internet service to stay connected on your cruise like no other in the industry! Internet packages range from \$0.09 per MB - \$29.00 (1000 MB package) limited time promotional offer. For more information contact your Connect@Sea Expert or Guest Services onboard.

FREE ON DEMAND TV

Watch Disney movies, Hollywood features and even captioned content, plus much more "On Demand" for FREE in the comfort of your stateroom! Bookmark your movie and come back to watch it later. Press MENU on your stateroom television remote control, and follow the prompts.

Disney Cruise Line PORT ADVENTURES

Welcome to the beautiful Cayman Islands. Take this opportunity to discover Grand Cayman's world renowned snorkeling. Dive down deep and explore the ocean floor on the Atlantis submarine or just sit back, relax and enjoy the sights and sounds of this island on the Grand Cayman Island tour. Visit our friendly Port Adventures team located Deck 5, Midship, and let us answer all your questions about Grand Cayman.

SHOPPING

EVERYTHING PRINCESS AT MICKEY'S MAINSAIL

Are you cruising with a young, aspiring Princess? Stop by Mickey's Mainsail for all things Disney Princess including dresses and accessories. Whether your princess is inspired by Cinderella, Belle, Merida, or Tiana, Mickey's Mainsail has everything you need to be royal ready! Deck 3, Forward.

VERA BRADLEY BAGS AND ACCESSORIES

With their distinctive and colorful fabrics and trims, view our collection of Vera Bradley bags and accessories including the new Vera Bradley tote bags designed especially for Disney Cruise Line® available at White Caps. Deck 3, Forward.

UNIQUE DISNEY ART AT THE VISTA GALLERY

Stop by the Vista Gallery to view original artwork by a variety of celebrated Disney artists featuring some of your favorite Disney characters. Also check out unique Disney art painted on original dessert plates from the Animator's Palate Restaurants on the Disney Magic® Cruise Ship and Disney Wonder® Cruise Ship. Created by popular Disney artists, Mark Seppala and Joe Kaminski, these one-of-a-kind plates are available exclusively on Disney Cruise Line® while supplies last. Deck 4, Midship.

SOPHIA FIORI DIAMOND TRUNK SHOW

Sophia Fiori is an LA based designer, wholesaler, and one of Hollywood's favorite designers. Industry leaders in colored diamonds, and more specifically Caribbean blue diamonds - one of the single most popular purchases at sea because it reminds everyone of the colors of the Breathtaking Ocean! White Caps, Deck 3, Forward.

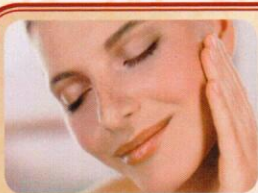
HAIR BRAIDING ONBOARD

Add some flair to your hair when you visit a Disney Cruise Line® hair braiding station! Stop by a station today for more information and to learn all about the available braiding styles. Subject to restrictions and availability. Deck 11, Midship.

ROYAL COURT ROYAL TEA

Hear ye, hear ye! Princes and Princesses are welcomed to join some of your favorite Disney Princesses at the Royal Court Royal Tea for an afternoon filled with music, fun, and delicious goodies! Stop by the Guest Services Desk, Deck 3, Midship, to register and to learn more about this royal event. Reservations required. Fee will apply. Limited space available.

Due to port regulations, when the ship is docked, the stores will remain closed.



SENSES
SPA & SALON

PAMPER PACKAGE

- 50 minute Full Body Massage
- Foot & Ankle Massage
- Indian Scalp Massage
- 25 Minute Booster Facial

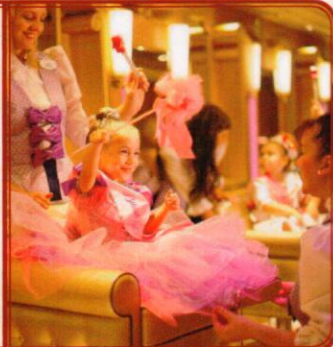
ONLY \$149

Call Senses Spa & Salon, 7-1465

BIBBIDI BOBBIDI BOUTIQUE

Deck 5, Midship

Does your Princess have more than one transformation reserved during this voyage? The Royal Sea Package contains multiple transformations in addition to unique offerings such as a Royal Rolling Trunk and a Keepsake Glass Slipper. Inquire about upgrading your experience to the Royal Sea Package by visiting the Bibbidi Bobbidi Boutique or by dialing extension 7-9438.



Shutters

GET THE PICTURE!

Ask our friendly photographers about "Get the Picture!" And get the incredible value of an unlimited digital photo package, which includes all of your stateroom photos.

Visit Shutters today as supplies are limited.

**Terms and conditions apply. The Photo Book is only available for purchase during this cruise.*

IMPORTANT INFORMATION

Security Notice

All Guests (including children) who wish to disembark the ship are required to present their Key to the World card at the gangway. A photo ID is also required for those Guests who are 18 years of age or older. Guests under the age of 18 are required to have a parent, guardian or other responsible adult sign an authorization form at the Guest Service Desk if they wish to go ashore unaccompanied or with any adult from another stateroom.

Sunscreen/Insect Repellent Advisory

Use sunscreen first and protect against mosquito borne illnesses by applying insect repellent on top of sunscreen when going ashore.

Cold and Flu Reminder

Please wash hands frequently and thoroughly, particularly before meals. Contact the Health Center by dialing 7-1923, should anyone in your party become ill.

Corridor Quiet Hours

As a courtesy to all our Guests, please recognize quiet hallway hours from 10:00 p.m. til 8:00 a.m.

Inclement Weather

For the safety of all Guests, outdoor events may be changed due to unforeseen weather conditions.

Environmental Message

With Disney's commitment to the Environment, please refrain from throwing anything over the Ship's side. Thank you!

No Reserved Seats Policy

As a courtesy to all our Guests, we kindly advise that the saving of seats is not permitted in the Walt Disney Theatre, and the saving of the sun loungers is not permitted on Deck 11, 12, and 13. Items left unattended will be returned to lost and found at Guest Services, Deck 3 Midship.

Smoking

For the comfort of our guests, the following areas are designated as smoking areas:

- Deck 13, forward, port side by Currents
- Deck 12, aft, port side outdoor area that is accessible through the Meridian Lounge
- Deck 4, aft, port side from 6:00 p.m. to 6:00 a.m. only (all of Deck 4 is non-smoking from 6:00 a.m. to 6:00 p.m.) Smoking is prohibited inside all guest staterooms and on stateroom verandahs. Guest found smoking in their staterooms or on their verandahs will be charged a \$250 stateroom recovery fee.

Walt Disney Theatre

Theatrical performances may use artificial fog, strobe lights, pyrotechnics and other special effects. For the safety of our performers and the comfort of those around you, the use of any photography, video recording device or any electronic equipment is prohibited.

Verandah Safety

Please do not leave any combustible materials on your balcony when not present in your stateroom for safety reasons.

Morning	8:30	8:45	9:00	9:15	9:30	9:45	10:00	10:15	10:30	10:45	11:00	11:15	11:30	11:45	12:00	12:15	12:30	12:45	1:00	1:15	1:30			
FUNNEL VISION	Toy Story (G) Funnel Vision			Monsters, Inc. (G) Funnel Vision			Cars (G) Funnel Vision			Need for Speed (PG-13) Duration: 2 Hours 10 Minutes														
BUENA VISTA THEATRE	Frozen (PG) Duration: 1 Hour 48 Minutes < Starts at 8:00 a.m.																							
CHARACTERS	Goofy Lobby Atrium (P)		Jake Dk 4, Balcony		Woody Lobby Atrium (V)		Goofy Lobby Atrium (P)		Jake Dk 4, Balcony		Woody Lobby Atrium (V)													
	Buzz Lobby Atrium (V)		Stitch Lobby Atrium (P)		Hook & Smee Dk 4, Balcony		Stitch Lobby Atrium (P)		Minnie Dk 4, Balcony															
FUN FOR ALL AGES	Jake D Lounge		Bingo Pre Sales		Pot Of Gold™ Jackpot Bingo D Lounge		Port Adventures - Please check your tickets for meeting times and locations																	
			Disney Trivia O'Gills Pub		Diamond and Gemstone Seminar La Piazza																			
ADULTS	Friends of Bill W. Outlook		Body Sculpt Boot Camp (Nom. Fee) Senses Fitness Center		Board Games Available in O'Gills Pub																			
			Facial Workshop Senses Fitness Center																					
VIBE 14-17 YEARS OLD	Youth Activities Open House						Smoothie Hour			Fun In the Sun														
EDGE 11-14 YEARS OLD	Youth Activities Open House						Pictionary			Xbox® Challenge			Animation Cells			Game Challenge								
OCEANEER LAB 3-12 YEARS OLD	Craft Corner									Human Bingo						Parachute Games								
	Piston Cup Challenge									Craft Corner						Lunch								
OCEANEER CLUB 3-12 YEARS OLD	Youth Activities Open House															Craft Corner								
	Mickey's Puzzle Playtime						Magic PlayFloor			Relay Games			Cruisin' with Crush						Little Einstein's Adventure					
Afternoon	1:45	2:00	2:15	2:30	2:45	3:00	3:15	3:30	3:45	4:00	4:15	4:30	4:45	5:00	5:15	5:30	5:45	6:00	6:15	6:30	6:45			
FUNNEL VISION	Pixar Short Films (G) Funnel Vision			Jam Fest at Sea Funnel Vision			Toy Story 2 (G) Funnel Vision																	
BUENA VISTA THEATRE	Thor: The Dark World (PG-13) Duration: 1 Hour 51 Minutes						Saving Mr. Banks (PG-13) Duration: 2 Hours 5 Minutes																	
CHARACTERS							Mickey Dk 4, Balcony		Tinker Bell Lobby Atrium (V)		Mickey Lobby Atrium (H)		Peter Pan Lobby Atrium (P)		Chip & Dale Lobby Atrium (H)		Snow White Lobby Atrium (P)							
							Pluto Lobby Atrium (P)		Hook & Smee Dk 4, Balcony		Cinderella Lobby Atrium (H)		Aladdin Dk 4, Balcony											
FUN FOR ALL AGES	Chip & Dale Lobby Atrium (12+)		Disney Animation: Cartoon Physics D Lounge		JAM FEST Deck Stage		Live Piano with Greg Alcock Lobby Atrium		The Magic & Illusion of JASON BISHOP Walt Disney Theatre															
			Midship Detective Agency Deck 2 & 5, Midship				Live Music with Take Cover La Piazza		Family Crafts La Piazza															
ADULTS	Books and Magazines available in Cove Cafe						Group Cycling Senses Fitness Center		Club 18*21 - Mini Golf Goofy Golf		Art of The Theme Show Tour Pre-Book at Guest Services													
	Board Games Available in O'Gills Pub																							
VIBE 14-17 YEARS OLD	Video Scavenger Hunt						Anyone Can Cook		Matinee Movie						Open House									
EDGE 11-14 YEARS OLD	Float Fun Trivia		Wii Challenge		Craft Corner		Sports Deck Fun		Youth Activities Open House		ESPN Dream Team Draft Day													
OCEANEER LAB 3-12 YEARS OLD	Magic PlayFloor				Float Fun Trivia		Youth Activities Open House		Scavenger Hunt															
	Disney Cruise Line Trivia						Super Sloppy Science		Pathfinders															
OCEANEER CLUB 3-12 YEARS OLD	Little Einstein's Adventure								Dinner															
	Marshmallow Olympics						Heffalump Expodishun		Big Top Fun Fest!															
Evening	7:00	7:15	7:30	7:45	8:00	8:15	8:30	8:45	9:00	9:15	9:30	9:45	10:00	10:15	10:30	10:45	11:00	11:15	11:30	11:45	12:00			
FUNNEL VISION	Ratatouille (G) Funnel Vision			Brave (PG) Funnel Vision																				
BUENA VISTA THEATRE	Saving Mr. Banks (PG-13) Duration: 2 Hours 5 Minutes						Saving Mr. Banks (PG-13) Duration: 2 Hours 5 Minutes																	
CHARACTERS	Hook & Smee Dk 4, Balcony		Tinker Bell Lobby Atrium (V)		Aladdin Preludes		Stitch Dk 4, Balcony		Tinker Bell Lobby Atrium (V)		Cinderella Lobby Atrium (H)		Belle Dk 4, Balcony											
	Mickey Lobby Atrium (H)		Snow White Preludes		Donald Lobby Atrium (H)				Snow White Lobby Atrium (P)		Mickey Lobby Atrium (H)													
FUN FOR ALL AGES	Bingo Pre Sales		BOGO Jackpot D Lounge		The Magic & Illusion of JASON BISHOP Walt Disney Theatre		Family Superstar Karaoke D Lounge		Family Fusion D Lounge		Family Superstar Karaoke D Lounge													
	Family Dance Party The Tube		So You Think You Know Your Family? The Tube		Family Crafts La Piazza		Live Music with Ash & Mike Lobby Atrium		Live Music with Ash & Mike Lobby Atrium															
ADULTS			St. Patrick's Day Trivia O'Gills Pub						The Quest The Tube		The Comedy & Hypnosis of DALE K The Tube		80's/90's Remix with Cruise Staff DJ The Tube											
			Live Music with Take Cover La Piazza				Take Cover LIVE La Piazza		Club 18*21 - Mixer The Tube															
VIBE 14-17 YEARS OLD	Youth Activities Open House						Pump It Up			Smoothie Hour			Gender Wars			Ghost Voyagers								
EDGE 11-14 YEARS OLD	Anyone Can Cook: Cupcakes						Game Challenge						Ghost Voyagers			Gender Wars								
OCEANEER LAB 3-12 YEARS OLD	Anyone Can Cook: Cupcakes						GAGA Ball			Dance Party			Xbox® Challenge											
OCEANEER CLUB 3-12 YEARS OLD	Memory Wall		Craft Corner						Super Sloppy Science		Game Challenge													
	Once Upon a Time		Mickey's Puzzle Playtime		Face Paint Time		Camp Rocking Out!		Pathfinders															

Symbol for activities that will be repeated during the cruise



Youth Activities Open House



FOLD

Fold along the dotted lines and take me with you so you don't miss any of the fun!

FOLD

IN THE SPOTLIGHT SERIES
SOLVE IT! SERIES

JUMP UP! SERIES
CREATE & INVENT SERIES

CLUBHOUSE SERIES
STORYBOOK SERIES

MONDAY, MARCH 17, 2014 - GRAND CAYMAN

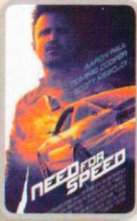
BUENA VISTA THEATRE

Deck 4 & 5, Midship

DOLBY 3D



8:00 a.m.
Duration:
1 hr 48 mins
Rating: PG



1:00 p.m.
Duration:
2 hrs 10 mins
Rating: PG-13



3:30 p.m.
Duration:
1 hr 51 mins
Rating: PG-13



5:45 p.m., 8:15 p.m.
& 10:45 p.m.
Duration:
2 hrs 5 mins
Rating: PG-13

Character Appearances

PHINEAS & FERB

Lobby Atrium (H)
9:00 a.m. & 10:30 a.m.

CAPTAIN HOOK & MR SMEE

Deck 4, Balcony
9:00 a.m., 10:00 a.m., 5:15 p.m.,
7:15 p.m. & 9:30 p.m.

GOOFY

Lobby Atrium (P)
9:00 a.m. & 10:00 a.m.

BUZZ LIGHTYEAR

Lobby Atrium (V)
9:00 a.m. & 10:30 a.m.

JAKE - THE NEVERLAND PIRATE

Deck 4, Balcony
9:30 a.m. & 10:30 a.m.

STITCH

Lobby Atrium (P)
9:30 a.m. & 10:30 a.m.
Preludes - 5:30 p.m. & 9:30 p.m.
Deck 4, Balcony - 8:15 p.m.

WOODY

Lobby Atrium (V)
9:45 a.m. & 11:00 a.m.

MINNIE MOUSE

Deck 4, Balcony - 11:00 a.m.
Lobby Atrium (H) - 9:30 p.m.

DONALD DUCK

Lobby Atrium (P) - 11:00 a.m.
Lobby Atrium (H) - 7:45 p.m.

MICKY MOUSE

Deck 4, Balcony - 4:15 p.m.
Lobby Atrium (H) - 5:00 p.m.,
7:15 p.m. & 10:00 p.m.

TINKER BELL

Lobby Atrium (V)
4:30 p.m., 5:30 p.m., 7:30 p.m.
& 9:30 p.m.

PLUTO

Lobby Atrium (P) - 4:45 p.m.

PINOCCHIO

Deck 4, Balcony
4:45 p.m. & 7:45 p.m.
Preludes - 10:00 p.m.

PETER PAN

Lobby Atrium (P) - 5:15 p.m.

CINDERELLA

Lobby Atrium
5:30 p.m. & 9:45 p.m.

CHIP & DALE

Lobby Atrium (H) - 5:30 p.m.

ALADDIN & GENIE

Deck 4, Balcony - 5:45 p.m.
Preludes - 8:00 p.m.
Lobby Atrium (P) - 10:00 p.m.

SNOW WHITE & DOPEY

Lobby Atrium (P)
5:45 p.m. & 9:30 p.m.

BELLE

Deck 4, Balcony - 10:00 p.m.

(H) Hallway - (S) Starboard Side - (P) Port Side - (V) Vestibule

YOUTH ACTIVITIES THEMED EXPERIENCES

CLUBHOUSE SERIES
focuses on movement and features content which appeals to younger children.

JUMP UP! SERIES
includes large group games & movement-oriented activities.

IN THE SPOTLIGHT SERIES
focuses on children's stage presence with lots of activities and enthusiasm.

STORYBOOK SERIES
is designed with a strong connection to the Disney classic stories.

CREATE & INVENT SERIES
will have a tactile focus allowing children to create and admire their work.

SOLVE IT! SERIES
are less active, but will challenge children with problem/solutions-based activities.

YOUTH ACTIVITIES OPEN HOUSE

A non-secured program with activities for families, adults and children of all ages to enjoy together.

SHIP DIRECTORY

YOUTH ACTIVITIES

DISNEY'S OCEANEER CLUB	DECK 5, MID	9:00 AM - 12:00 MID
DISNEY'S OCEANEER LAB	DECK 5, MID	9:00 AM - 12:00 MID
EDGE	DECK 13, MID	9:00 AM - 1:00 AM
VIBE	DECK 4, FWD	10:00 AM - 2:00 AM
IT'S A SMALL WORLD NURSERY	DECK 5, MID	9:00 AM - 11:00 PM

POOLS & MORE

*Children under 12 must have adult supervision in pool areas.

AQUADUCK	DECK 12, MID	9:00 AM - 11:00 PM
AQUALAB	DECK 12, AFT	10:00 AM - 6:00 PM
DONALD'S POOL	DECK 11, MID	9:00 AM - 6:00 PM 8:00 PM - 10:00 PM
MICKY'S POOL	DECK 11, MID	6:00 AM - 11:00 PM
MICKY'S SLIDE	DECK 11, MID	9:00 AM - 6:00 PM
NEMO'S REEF	DECK 11, MID	9:00 AM - 6:00 PM
QUIET COVE POOL (18+)	DECK 11, FWD	6:00 AM - 12:00 MID
SATELLITE FALLS	DECK 13, FWD	6:00 AM - 8:00 PM

RECREATION

GOLF/SPORTS SIMULATORS	DECK 13, AFT	9:00 AM - 6:00 PM
GOOFY GOLF	DECK 13, AFT	8:00 AM - 10:00 PM
GOOFY'S SPORTS DECK	DECK 13, AFT	8:00 AM - 6:00 PM
MIDSHIP DETECTIVE AGENCY	DECKS 2 & 5, MID	9:00 AM - 10:00 PM
PORT ADVENTURES DESK	DECK 5, MID	9:00 AM - 12:30 PM 7:00 PM - 8:30 PM
SENSES FITNESS CENTER (18+)	DECK 11, FWD	6:30 AM - 10:00 PM

GENERAL INFORMATION

ARR-CADE	DECK 11, AFT	24 HOURS
DISNEY VACATION CLUB	DECK 4, MID	5:00 PM - 10:00 PM
GUEST SERVICES	DECK 3, MID	24 HOURS
MEDICAL HEALTH CENTER	DECK 1, FWD	9:30 AM - 11:00 AM 4:30 PM - 7:00 PM
ONBOARD SALES DESK	DECK 4, MID	9:00 AM - 11:00 AM 4:00 PM - 6:00 PM 7:30 PM - 10:00 PM
PORT & SHOPPING DESK	DECK 4, MID	9:30 AM - 10:30 AM 7:30 PM - 8:30 PM
PRELUDES	DECK 3, FWD	6:15 PM - 6:30 PM 8:00 PM - 8:45 PM 10:30 PM - 11:00 PM
SENSES SPA AND SALON	DECK 11, FWD	8:00 AM - 10:00 PM
SHUTTERS PHOTO GALLERY	DECK 4, MID	5:00 PM - 10:30 PM
SHUTTERS DIGITAL	DECK 4, MID	24 HOURS

SHOPPING

BIBBIDI BOBBIDI BOUTIQUE	DECK 5, MID	9:00 AM - 9:00 PM
MICKY'S MAINSAIL	DECK 3, FWD	6:15 PM - 11:00 PM
QUACKS	DECK 11, MID	
SEA TREASURES	DECK 3, FWD	6:15 PM - 11:00 PM
VISTA GALLERY	DECK 4, MID	6:15 PM - 10:00 PM
WHITE CAPS	DECK 3, FWD	6:15 PM - 11:00 PM
WHOZITS & WHATZITS	DECK 11, MID	9:00 AM - 10:30 AM

DINNER MENU

Animator's Palate: Pacific Rim
Enchanted Garden: Continental Market Cuisine
Royal Court: French Cuisine
Dining Times: 5:45 p.m. & 8:15 p.m.

DRINK OF THE DAY

Yellow Bird (Alcoholic)
Lava Smoothie (Non Alcoholic)

WEATHER FORECAST

Today: Partly Sunny
High: 78°F/26°C
Tomorrow: Partly Cloudy
High: 80°F/27°C

Evening Attire: Cruise Casual

DINING & LOUNGES

BREAKFAST

CABANAS CONTINENTAL	DECK 11, AFT	7:00 AM - 7:30 AM
CABANAS	DECK 11, AFT	7:30 AM - 11:30 AM
ENCHANTED GARDEN	DECK 2, MID	8:00 AM - 10:45 AM
ROYAL COURT	DECK 3, MID	8:00 AM - 9:30 AM

LUNCH

CABANAS	DECK 11, AFT	11:30 AM - 2:15 PM
FILLMORE'S FAVORITES	DECK 11, MID	10:30 AM - 6:00 PM
LUIGI'S PIZZA	DECK 11, MID	10:30 AM - 6:00 PM
ROYAL COURT	DECK 3, MID	12:00 PM - 1:30 PM
TOW MATER'S GRILL	DECK 11, MID	10:30 AM - 11:00 PM

DINNER

ANIMATOR'S PALATE	DECK 3, AFT	5:45 PM & 8:15 PM
ENCHANTED GARDEN	DECK 2, MID	5:45 PM & 8:15 PM
ROYAL COURT	DECK 3, MID	5:45 PM & 8:15 PM
CABANAS TABLE SERVICE	DECK 11, AFT	6:30 PM - 8:30 PM
PALO (18+) (RESERVATIONS REQ. & NOM. FEE APPLIES)	DECK 12, AFT	6:00 PM - 8:30 PM
REMY (18+) (RESERVATIONS REQ. & NOM. FEE APPLIES)	DECK 12, AFT	6:00 PM - 8:30 PM

LATE NIGHT SNACKS

LA PIAZZA (18+)	DECK 4, AFT	10:45 PM - 11:45 PM
LUIGI'S PIZZA	DECK 11, MID	9:30 PM - 12:30 AM

ADDED FEATURES

BEVERAGE STATION	DECK 11, MID	24 HOURS
EYE SCREAM	DECK 11, MID	11:00 AM - 11:00 PM
ROOM SERVICE	DIAL 0	24 HOURS

ENTERTAINMENT - LOUNGES - BARS

Adults must be 21 and older to consume alcoholic beverages.

BON VOYAGE	DECK 3, MID	10:00 AM - 11:00 PM
COVE BAR (18+)	DECK 11, FWD	11:00 AM - 11:00 PM
COVE CAFE (18+)	DECK 11, FWD	7:00 AM - 12:00 MID
CURRENTS (18+)	DECK 13, FWD	10:00 AM - 11:00 PM
D LOUNGE	DECK 4, MID	SHOWTIMES
FROZONE TREATS	DECK 11, MID	10:00 AM - 10:00 PM
LA PIAZZA (18+ AFTER 9:00 P.M.)	DECK 4, AFT	3:00 PM - 12:00 MID
MERIDIAN (18+)	DECK 12, AFT	12:00 PM - 12:00 MID
O'GILLS PUB (18+ AFTER 9:00 P.M.)	DECK 4, AFT	2:00 PM - 12:00 MID
OOH LA LA (18+)	DECK 4, AFT	5:00 PM - 12:00 MID
OUTLOOK	DECK 14, MID	SUNSET TIMES
SKYLINE (18+)	DECK 4, AFT	5:00 PM - 12:30 AM
THE TUBE (18+ AFTER 9:00 P.M.)	DECK 4, AFT	9:30 PM - 2:00 AM
VISTA CAFE	DECK 4, MID	7:00 AM - 11:00 PM
WAVES	DECK 12, AFT	10:00 AM - 6:00 PM

Consumers who order raw or partially cooked, ready-to-eat food of animal origin, are hereby informed that the food is not sufficiently cooked to ensure its safety.

PORT ADVENTURES IMPORTANT INFORMATION

Please check your tour tickets for meeting times and locations.
Visit the Port Adventures Desk, Deck 5, Midship, for any questions.

All Ashore: Approx. 11:15 a.m.
Last Tender: Approx. 5:00 p.m.

Ship's Agent In Grand Cayman
Bodden Shipping Agency, Fifth Floor,
Room 508, Gorang Avenue,
GT Grand Cayman,
Tel: 345-949-6254 or 345-949-7424

IMPORTANT NUMBERS
Fire/Security: 7-3001
Medical EMERGENCY: 7-3000
Health Center: 7-1923