

PERSONAL NAVIGATOR

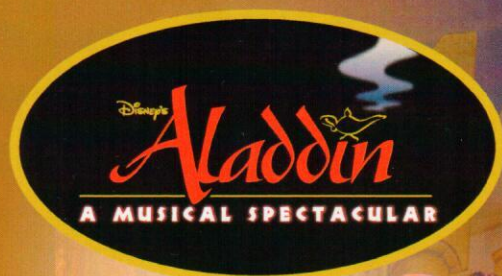


Sunrise 6:32 a.m. Sunset 6:33 p.m.
Evening Attire: Formal

Today: Sunny High: 84°F/29°C
Tomorrow: Partly Sunny High: 78°F/26°C

SUNDAY, MARCH 16, 2014

DAY AT SEA

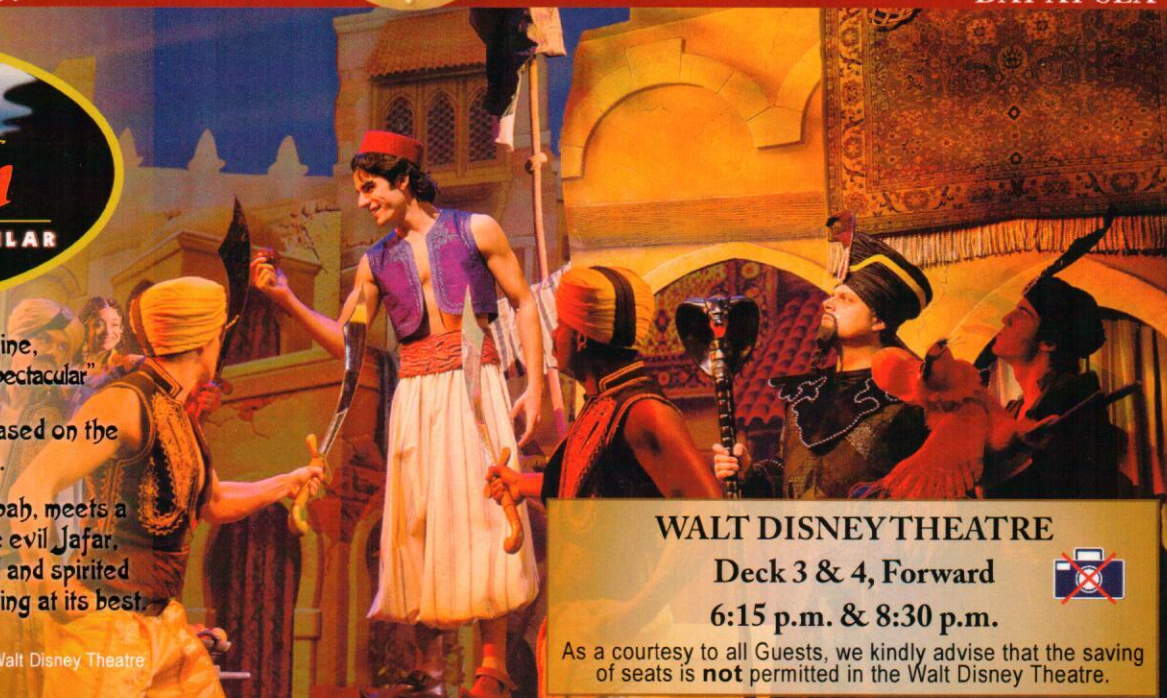


New to Disney Cruise Line,
"Disney's Aladdin - A Musical Spectacular"

A fast-paced, musical comedy based on the beloved animated film.

Aladdin, the "street rat" of Agrabah, meets a wise-cracking Genie, battles the evil Jafar, and falls in love with the beautiful and spirited Princess Jasmine. Disney storytelling at its best.

Assistance available at the entrance to the Walt Disney Theatre 30 minutes prior to show time.



WALT DISNEY THEATRE

Deck 3 & 4, Forward

6:15 p.m. & 8:30 p.m.



As a courtesy to all Guests, we kindly advise that the saving of seats is **not** permitted in the Walt Disney Theatre.

Disney FANTASY Fun Facts

Tonnage: 130,000 Gross Tons

Height: 216 Feet

Length: 1115 Feet

Important Dates

Name Announcement: March 10, 2009

Steel Cutting: March 16, 2010

Keel Laying: February 11, 2011

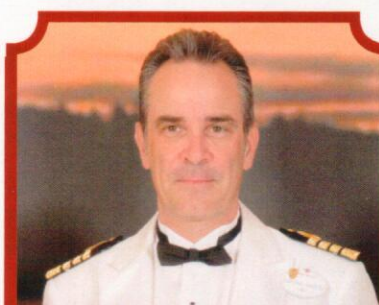
Delivery: February 9, 2012

Almost four football fields in length, the Disney Fantasy is longer than the height of the Eiffel Tower in Paris (1,063 feet). She is also longer than the height of New York City's famous Chrysler building (1,047 feet).

Disney Fantasy's Whistle

Will be played after today's noon announcement

The Disney Fantasy's whistle, a prominent element of the "Sailing Away" deck party at the start of the cruise, is quite the musical talent. It's able to perform not just the first musical line of "When You Wish Upon a Star" but also the second line of the song ("makes no difference who you are") plus several measures of "Yo Ho (A Pirate's Life for Me)," "It's a Small World," "Be Our Guest," "Hi Diddle Dee Dee (An Actor's Life for Me)" and "A Dream is a Wish."



CAPTAIN'S RECEPTION

Enjoy live music and a cocktail while meeting some of the ship's officers.

Lobby Atrium, Deck 3, Midship,
5:00 & 7:30 p.m.

Enjoy an exclusive photo opportunity with Captain Marco at

5:15 & 7:30 p.m., Lobby Atrium

Don't Miss:

Walking Ship Tour

Meet at Preludes, Deck 3, Forward - 9:15 a.m. & 11:30 a.m.
Enjoy the beauty of the Disney Fantasy with your Cruise Staff in this guided tour.

Art of The Theme Show Tour (18+)

Pre-Book at Guest Services, Deck 3, Midship
Join us on a guided ship tour and discover the key ingredients that make the Disney Fantasy cruise ship one-of-a-kind.

Anyone Can Cook - Apple Strudel

D Lounge, Deck 4, Midship - 2:15 p.m.
From our galley to yours. Join our chefs as they show you how to prepare delicious dishes.
Today's Menu - Apple Strudel

Club D Dance Party

D Lounge, Deck 4, Midship - 7:30 p.m. & 9:45 p.m.
Join your snazzy Cruise Staff as we turn D-Lounge into an electrifying family nightclub featuring appearances from some of your favorite Disney Characters. Club D, where everyone is a V.I.P!

Ice Breakers (18+)

The Tube, Deck 4, Aft - 10:00 p.m.
Fancy some fun? Want to get to know your fellow guests? Then join us as we break the ice in this fun filled game show



TIME ZONE CHANGE

Remember to turn your clocks **BACK 1 HOUR** upon retiring on **SUNDAY** evening, or first thing **MONDAY** morning.

DINNER MENU

Animator's Palate: Pacific Rim Cuisine
Enchanted Garden: Continental Market Cuisine
Royal Court: French Cuisine

DRINK OF THE DAY

Bahama Mama (Alcoholic)
Coco Bali (Non Alcoholic)

IMPORTANT NUMBERS

Fire/Security: 7-3001
Medical Emergency: 7-3000
Health Center: 7-1923

FUN FOR ALL AGES HIGHLIGHTS



WAKE UP WITH DISNEY JUNIOR

D Lounge, Deck 4, Midship - 8:30 a.m.

What happens when you experience unlimited fun with your favorite Disney Junior shows? You get an exciting dance party designed especially for preschoolers ages seven and under.



DISNEY ANIMATION: CREATING A CHARACTER

D Lounge, Deck 4, Midship - 9:15 a.m. & 12:45 p.m.

Go behind the scenes at Walt Disney Animation Studios as Walt Disney himself talks about his most famous characters, then learn the basic techniques of drawing Mickey and Donald in this fun and interesting enrichment program.



JACK-JACK'S INCREDIBLE DIAPER DASH

Lobby Atrium, Deck 3, Midship - 12:15 p.m.

Calling all baby Cruisers! It's time to take to the mat to see who's the fastest crawler of the seven seas! Register your baby 15 minutes prior to the big race.

PORT & SHOPPING SHOW

Buena Vista Theatre, Deck 4 & 5, Forward - 1:45 p.m.

Join your Port and Shopping Guides to learn about the incredible Tax & Duty free shopping ashore this cruise! Free charm bracelet for all in attendance and a raffle to win a Diamond Pendant!



ANYONE CAN COOK - APPLE STRUDEL

D Lounge, Deck 4, Midship - 2:15 p.m.

From our galley to yours. Join our chefs as they show you how to prepare delicious dishes. Today's Menu - Apple Strudel

PLAYHOUSE D LOUNGE

D Lounge, Deck 4, Midship - 5:15 p.m.

Calling our youngest of cruisers! Here is a special playtime that is just for you. Come meet new friends; and join in on the fun as your Cruise Staff team takes you through interactive activities made just for you!

FAMILY SUPERSTAR KARAOKE

D Lounge, Deck 4, Midship - 8:30 p.m. & 10:30 p.m.

Join your Cruise Staff in D Lounge tonight and sing along to your favorite song - fun for everyone.



ADULT ACTIVITY HIGHLIGHTS

SENSES SPA FITNESS CLASSES & SEMINARS

Yoga - Donald's Pool - 7:00 a.m.

Body Sculpt Boot Camp (Nom. Fee) - Senses Fitness Center - 9:00 a.m.

Secrets to a Flatter Stomach - Senses Spa & Salon - 11:00 a.m.

Introduction to Acupuncture - Senses Fitness Center - 12:15 p.m.

Back Pain Solutions - Senses Spa & Salon - 1:00 p.m.

Tongue & Pulse Analysis - Senses Spa & Salon - 3:15 p.m.

Group Cycling - Senses Fitness Center - 4:00 p.m.

Complimentary Footprint Analysis - Senses Spa & Salon - 5:00 p.m.

Fitness Frenzy (13-17, Nom. Fee) - Senses Fitness Center - 7:00 p.m.



TASTING CLASSES

Champagne Tasting (21+) - Ooh La La - 12:15 p.m.

Stem to Stern Wine Tasting (21+) - Ooh La La - 1:45 p.m.

Rum Tasting (21+) - Meridian - 2:00 p.m.

Martini Tasting (21+) - Meridian - 4:00 p.m.

Tequila & Margarita Tasting (21+) - Ooh La La - 4:45 p.m.

Whiskey Tasting (21+) - Cove Cafe - 10:00 p.m.

Cognac Tasting (21+) - Meridian - 10:30 p.m.

Please make reservations for tastings at Guest Services for a nominal fee.

Tasting Seminars are only for Guests 21 and Older.



CLUB 18*21 - LUNCH

Royal Court, Deck 3, Midship - 12:15 p.m.



CLUB 18*21 - MINI GOLF

Goofy Golf, Deck 13, Aft - 4:00 p.m.

CLUB 18*21 - MIXER

The Tube, Deck 4, Aft - 10:00 p.m.



ESPN DREAM TEAM DRAFT DAY - FOOTBALL

O'Gills Pub, Deck 4, Aft - 11:15 a.m.

Join the "Commissioner" and engage in this interactive fantasy football draft unlike anything you've ever seen! Can YOU draft the greatest football team of All-Time?

70'S REMIX WITH CLUB DJ RASHAUN

The Tube, Deck 4, Aft - 11:00 p.m.

Join Club DJ Rashaun, as he takes you back and remixes 70's hits to keep you dancing.

DIAMOND JACKPOT BINGO

D Lounge, Deck 4, Midship

Card Sales - 10:45 a.m.

Game Starts - 11:00 a.m.

Join us for 4 cash prize games and your chance to win a Diamond Pendant! Everyone attending will also receive a voucher to collect a free Diamonds International charm bracelet!

SENSES SPA BINGO

D Lounge, Deck 4, Midship

Card Sales - 4:00 p.m.

Game Starts - 4:15 p.m.

Four CASH prizes to be won! Plus great spa prizes that will pamper you, including a mini facial and massages all courtesy of the Senses Spa and Salon. Serenity now!

YOUTH ACTIVITIES HIGHLIGHTS

DINE & PLAY

A convenience for families dining at 8:15 p.m., our Youth Activities Counselors will be available at 9:15 p.m. at the entrance of Royal Court, Enchanted Garden and Animator's Palate dining rooms to bring registered children to join the fun in the Youth Activity areas.



Deck 5, Midship (7-1440)
(3-12 years old)

9:00 a.m. - 12:00 mid

ALOHA LUAU

10:30 a.m.

It's party time, Hawaiian style! Come join us for a Luau experience and learn how to dance like Lilo & Stitch.

ONCE UPON A TIME

7:30 p.m.

Join Beverly the Bookmaker for a magical, musical story time featuring a Disney Princess!



Deck 5, Midship (7-1445)
(3-12 years old)

9:00 a.m. - 1:00 a.m.

STITCH'S ADVENTURE SQUAD

9:30 a.m.

Stitch, everyone's favorite alien, is making an appearance to share some of his mischievous games and activities.

GET THE HOOK

4:15 p.m.

A villainous villain has stolen Captain Hook's prized golden hook. Become a member of the Top Deck Detective Agency and help solve the clues to retrieve Hook's hook.



Deck 13, Midship (7-9743)
(11-14 years old)

9:00 a.m. - 1:00 a.m.

MAGIC SHOW

11:30 a.m.

The Magnificent Magician will demonstrate to you some of the best known magic tricks on the sea.

THAT'S HILARIOUS

9:45 p.m.

Ever wanted to show off your comedy skills? Then be a part of the cast for the crazy improv show "That's Hilarious" and put on a live show for your friends.



Entrance on Deck 4, Forward (7-9418)
(14-17 years old)

9:00 a.m. - 2:00 a.m.

ZOMBIFIED

1:15 p.m.

A big movie producer is looking for zombies to help him film the finale to his latest masterpiece, Zombified.

PUMP IT UP

9:00 p.m.

Join us in the Fitness Center for a Teen Only workout. Meet in Vibe to join in!

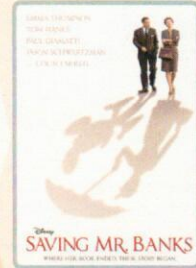
BUENA VISTA THEATRE

Deck 4 & 5, Midship
Today's Movies

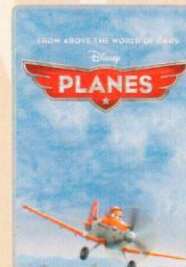
DOLBY 3D



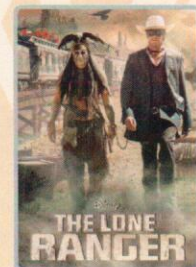
8:00 a.m., 5:15 p.m.
& 8:15 p.m.
Duration: 1 hr 48 mins
Rating: PG



10:30 a.m.
Duration: 2 hrs 5 mins
Rating: PG-13



3:15 p.m.
Duration: 1 hr 32 mins
Rating: PG



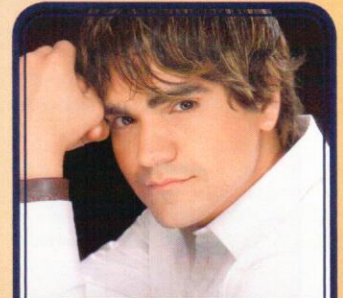
10:30 p.m.
Duration: 2 hrs 29 mins
Rating: PG-13



FAMILY VARIETY ACT

Featuring the
Comedy & Hypnosis
of Dale K,
as he entertains the
entire family in this
fun-filled show.

*The Tube,
Deck 4, Aft,
7:30 p.m.*



ADULT VARIETY ACT

Featuring the
Magic & Illusion
of Jason Bishop,
as he entertains you in this
adult exclusive show.

*The Tube (18+),
Deck 4, Aft,
10:30 p.m.*

YOUTH ACTIVITIES OPEN HOUSE

Open House is an opportunity for all to come and participate in a variety of exciting activities and free time in the Oceaneer Club, Oceaneer Lab, It's A Small World Nursery, Vibe and Edge throughout the cruise. During these times secured programming will still be offered in the other venue for those looking to check their children into care.

Disney's Oceaneer Club: 9:00 a.m. - 10:00 a.m.
Vibe: 9:00 a.m. - 10:30 a.m. & 6:30 p.m. - 8:00 p.m.
Edge: 9:00 a.m. - 10:00 a.m. & 5:00 p.m. 6:30 p.m.

MORE TO ENJOY WHILE ONBOARD

PLAN YOUR NEXT GETAWAY NOW

Our 3 and 4 night Bahamian Cruises are a perfect way to get an instant tropical recharge! Departing from Miami or Port Canaveral, most Bahamian cruises include a stop at Disney's private island, Castaway Cay. Visit the Onboard Sales Desk today and ask about our special onboard booking offer.

PORT AND SHOPPING INFORMATION

Learn about the incredible shopping in the Caribbean at the Port and Shopping Show at 1:45 p.m. in the Buena Vista Theatre, Deck 4, Midship. Everything will be covered from Diamonds to T-Shirts, Watches to Tanzanite. A free Charm Bracelet and a chance to win a Diamond Pendant for all in attendance! The first 100 guest in will receive a Ship Charm. Don't miss the Fine Watch Seminar at 4:15 p.m. La Piazza, Deck 4 Aft.

DISNEY VACATION CLUB® GROUP PREVIEW

Want to learn more about taking magical vacations year after year? Please see a Disney Vacation Club representative on Deck 4, Midship, or call 7-2805 from your stateroom phone for more information about our interactive group presentation.

ONBOARD AIRLINE CHECK IN

If you would like to have your boarding passes printed for you onboard and have your luggage taken to the airport for you, register before Wednesday. If you have a Disney Cruise Line airport transfer to Orlando International Airport and fly with one of the participating airlines, stop at Guest Services, Deck 3, Midship to register.

ARR-CADE

Where can you be a ninja, play the guitar like a rock star, race a car down the streets of Tokyo and along the way WIN some great prizes? Arr-CADE located Deck 11, Aft where the pirates play.

runDisney: CASTAWAY CAY 5K REGISTRATION (10+)

Sign up today for the runDisney: Castaway Cay 5K! Please visit the Port Adventures Desk or the Guest Services Desk to register at anytime prior to our arrival at Disney's Castaway Cay. Please note that runners must be 10 years of age or older to participate.

MIDSHIP DETECTIVE AGENCY

The puppies from 101 Dalmatians have gone missing! Use your special detective "badge" to track down the puppies and catch the villain who took them. Decks 2 & 5, Midship.

SENSES SPA & SALON SPA SPECIAL

IONITHERMIE

Would you like to lose between 1 - 8 inches?

Speed up your metabolism?

Firm your muscle tone?

Improve appearance of cellulite?

If so, then Ionithermy is the best treatment for you!

50 min. \$155

GUESS THE CARAT!

Guess the carat weight of one of our exquisite Sophia Fiori diamond rings. Whoever guesses closest wins a 5 carat midnight sapphire and a pair of midnight black sapphire studs! 9:30 a.m. - 7:00 p.m. Winners announced and raffle at 7:30 p.m.

Must be present to win!

White Caps, Deck 3, Forward.

This offer is not affiliated with Disney Cruise Line®.

Sophia Fiori



Shutters

FORMAL PORTRAITS TONIGHT!

Now that the family is dressed up and ready to enjoy the evening, capture the memories in your formal attire by visiting our professional portrait studios located in the Lobby Atrium, Deck 3, Midship.

5:00 p.m. - 6:00 p.m.

7:15 p.m. - 8:30 p.m.

9:30 p.m. - 10:30 p.m.

*Please note that photos are available for viewing on our interactive photo kiosks approximately five hours after being taken and are only available for purchase during this cruise.

Disney Cruise Line PORT ADVENTURES

Limited spaces are available for our most popular tours, so visit the Port Adventures Desk today to reserve your place. Why not explore the Chacchoben Mayan Ruins in Costa Maya, an awe-inspiring reminder of this fascinating civilization. For the families, we offer Dolphin experiences in Grand Cayman, Costa Maya and Cozumel, so why not let this cruise be the time to enjoy this once in a lifetime experience.

SHOPPING

"TAX FREE SHOPPING? YES, PLEASE!"

That's right! Do all of your tax and duty free shopping right onboard by visiting White Caps, Sea Treasures, and Mickey's Mainsail. Deck 3, Forward.

NEW DOONEY & BOURKE ONBOARD

Loved for their fine leather and unique designs, Dooney & Bourke creates styles that are sure to inspire. Visit White Caps and check out the new Dooney & Bourke handbags designed especially for Disney Cruise Line®. Deck 3, Forward.

HIDDEN CHARACTERS IN THOMAS KINKADE ART!

Known as the "Painter of Light," Thomas Kinkade is one Disney's most celebrated artists having created an array of enchanting artwork. Stop by the Vista Gallery today to view his unique collection of paintings featuring some of your favorite Disney characters! Also, take the time to try and find all of the hidden Disney characters scattered throughout his paintings. Are you up to the challenge? Deck 4, Midship.

ROYAL COURT ROYAL TEA

Hear ye, hear ye! Princes and Princesses are welcomed to join some of your favorite Disney Princesses at the Royal Court Royal Tea for an afternoon filled with music, fun, and delicious goodies! Stop by the Guest Services Desk, Deck 3, Midship, to register and to learn more about this royal event. Reservations required. Fee will apply. Limited space available.

BIBBIDI BOBBIDI BOUTIQUE

Young Princesses and Princes can get ready for a formal evening with a makeover at the Bibbidi Bobbidi Boutique. Make your reservations by visiting Bibbidi Bobbidi Boutique, Deck 5, Midship or dialing extension 7-9438. Limited space available.

IMPORTANT INFORMATION

Security Notice

All Guests (including children) who wish to disembark the ship are required to present their Key to the World card at the gangway. A photo ID is also required for those Guests who are 18 years of age or older. Guests under the age of 18 are required to have a parent, guardian or other responsible adult sign an authorization form at the Guest Service Desk if they wish to go ashore unaccompanied or with any adult from another stateroom.

Sunscreen/Insect Repellent Advisory
Use sunscreen first and protect against mosquito bites by applying insect repellent on top of sunscreen when going ashore.

Cold and Flu Reminder

Please wash hands frequently and thoroughly, particularly before meals. Contact the Health Center by dialing 7-1923, should anyone in your party become ill.

Corridor Quiet Hours

As a courtesy to all our Guests, please recognize quiet hallway hours from 10:00 p.m. to 8:00 a.m.

Inclement Weather

For the safety of all Guests, outdoor events may be changed due to unforeseen weather conditions.

Environmental Message

With Disney's commitment to the Environment, please refrain from throwing anything over the Ship's side. Thank you!

No Reserved Seats Policy

As a courtesy to all our Guests, we kindly advise that the saving of seats is not permitted in the Walt Disney Theatre, and the saving of the sun loungers is not permitted on Deck 11, 12, and 13. Items left unattended will be returned to lost and found at Guest Services, Deck 3 Midship.

Smoking

For the comfort of our guests, the following areas are designated as smoking areas:

- Deck 13, forward, port side by Currents
- Deck 12, aft, port side outdoor area that is accessible through the Meridian Lounge
- Deck 4, aft, port side from 6:00 p.m. to 6:00 a.m. only (all of Deck 4 is non-smoking from 6:00 a.m. to 6:00 p.m.) Smoking is prohibited inside all guest staterooms and on stateroom verandahs. Guest found smoking in their staterooms or on their verandahs will be charged a \$250 stateroom recovery fee.

Walt Disney Theatre

Theatrical performances may use artificial fog, strobe lights, pyrotechnics and other special effects. For the safety of our performers and the comfort of those around you, the use of any photography, video recording device or any electronic equipment is prohibited.

Verandah Safety

Please do not leave any combustible materials on your balcony when not present in your stateroom for safety reasons.

Morning	8:30	8:45	9:00	9:15	9:30	9:45	10:00	10:15	10:30	10:45	11:00	11:15	11:30	11:45	12:00	12:15	12:30	12:45	1:00	1:15	1:30	
FUNNEL VISION	A Goofy Movie (G) Funnel Vision					Aladdin (G) Funnel Vision					Disney Movie Challenge Poolside Funnel Vision											
BUENA VISTA THEATRE	Frozen (PG) DOLBY 3D Duration: 1 Hour 48 Minutes < Starts at 8:00 a.m.					Saving Mr. Banks (PG-13) Duration: 2 Hours 5 Minutes																
CHARACTERS			Princess Anna Preludes		Princess Gathering Lobby Atrium		Princess Anna Preludes		Sofia Dk 4, Balcony		Princess Anna Preludes				Chip & Dale Woody Dk 4, Balcony Lobby Atrium (V)							
FUN FOR ALL AGES	Disney Junior D Lounge		Walking Ship Tour Meet at Preludes		Crafts: 3D Crafts La Piazza		Bingo Pre Sales		Diamond Jackpot BINGO D Lounge		Crafts: Door Hangers La Piazza		Disney Trivia Lobby Atrium		Disney Animation Creating a Character D Lounge							
	Open House It's A Small World Nursery < Starts at 8:00 a.m.		Interdenominational Service Outlook		Toddler Time Goofy's Sports Deck																	
ADULTS	Friends of Bill W. Outlook		Xbox® Kinect™ - Wipeout Challenge O'Gills Pub				Secrets to a Flatter Stomach Senses Spa & Salon				Walking Ship Tour Meet at Preludes		The Tube - Group Preview		TV Tunes Trivia O'Gills Pub							
			Boot Camp (Nom. Fee) Senses Fitness Center		Art of The Theme Show Tour Pre-Book at Guest Services		Crafts - Tile Coasters O'Gills Pub		ESPN Dream Team Draft Day - Football O'Gills Pub				Singles Lunch Royal Court		Back Pain Solutions Senses Spa & Salon							
VIBE 14-17 YEARS OLD	Youth Activities Open House					Coffee Break					Sun Deck Fun					Zombified						
EDGE 11-14 YEARS OLD	Youth Activities Open House					Game Challenge		Wii Challenge		Magic Show		Tween Choice										
OCEANEER LAB 3-12 YEARS OLD						Craft Corner		Human Bingo		GAGA Ball							Bingo					
	Stitch's Adventure Squad					Super Sloppy Science		Wii Challenge														
OCEANEER CLUB 3-12 YEARS OLD	Open House and Registration							Craft Corner														
	Mickey's Puzzle Playtime					Memory Wall		Aloha Luau		Magic PlayFloor							Tinker Bell's Talent Show					
Afternoon	1:45	2:00	2:15	2:30	2:45	3:00	3:15	3:30	3:45	4:00	4:15	4:30	4:45	5:00	5:15	5:30	5:45	6:00	6:15	6:30	6:45	
FUNNEL VISION						Finding Nemo (G) Funnel Vision										The Princess Diaries (PG) Funnel Vision						
BUENA VISTA THEATRE	Port & Shopping Show					Planes (PG) Duration: 1 Hour 32 Minutes										Frozen (PG) DOLBY 3D Duration: 1 Hour 48 Minutes						
CHARACTERS	Mickey Dk 4, Balcony		Minnie Dk 4, Balcony				Minnie Preludes		Daisy Preludes		Goofy Preludes		Mickey Dk 4, Balcony		Donald Dk 4, Balcony							
FUN FOR ALL AGES	Port & Shopping Show Buena Vista Theatre		ANYONE CAN COOK D Lounge - Apple Strudel		Chip It Lobby Atrium (12+)		Bingo Pre Sales		Senses Spa Jackpot BINGO D Lounge		Captain's Welcome Reception Lobby Atrium		Live Music with Take Cover Lobby Atrium		Aladdin A MUSICAL SPECTACULAR Walt Disney Theatre							
	Mickey 200 The Tube (Limited Availability)		Disney Tunes Trivia La Piazza								Playhouse D Lounge D Lounge											
ADULTS	Rum Tasting (21+) Meridian		Watch Seminar La Piazza		Footprint Analysis Senses Spa & Salon																	
	Wine Tasting (21+) Ooh La La		70's Music Trivia O'Gills Pub		Tongue & Pulse Analysis Senses Spa & Salon		Club 18*21 - Mini Golf Goofy Golf		Tequila & Margarita Tasting (21+) Ooh La La													
VIBE 14-17 YEARS OLD	Zombified					Dive into DJ'ing					Football Tournament					Guitar Hero Challenge						
EDGE 11-14 YEARS OLD	Flubber					A to Z Scavenger Hunt		Game Challenge		Sports Deck Fun		Youth Activities Open House					Craft Corner					
OCEANEER LAB 3-12 YEARS OLD	Game Challenge					Relay Games										GAGA Ball						
	Anyone Can Cook					Game Challenge					Get the Hook					Dinner						
OCEANEER CLUB 3-12 YEARS OLD	Parachute Games					Relay Games					Game Challenge											
	Cruisin' with Crush					Toy Story Boot Camp					Picture This							Wii Challenge				
Evening	7:00	7:15	7:30	7:45	8:00	8:15	8:30	8:45	9:00	9:15	9:30	9:45	10:00	10:15	10:30	10:45	11:00	11:15	11:30	11:45	12:00	
FUNNEL VISION						Bolt (PG) Funnel Vision										The Avengers (PG-13) Funnel Vision						
BUENA VISTA THEATRE						Frozen (PG) DOLBY 3D Duration: 1 Hour 48 Minutes										The Lone Ranger (PG-13) Duration: 2 Hours 29 Minutes						
CHARACTERS	Cinderella Preludes		Mickey Dk 4, Balcony		Donald Dk 4, Balcony		Minnie Preludes		Mickey Dk 4, Balcony		Minnie Dk 4, Balcony											
FUN FOR ALL AGES			Captain's Welcome Reception Lobby Atrium		Aladdin A MUSICAL SPECTACULAR Walt Disney Theatre				Club D Dance Party D Lounge		Family Superstar Karaoke D Lounge											
	Family Dance Party The Tube		Variety: Dale K The Tube - Hypnotist								Live Music with Take Cover Lobby Atrium		Live Piano with Greg Alcock Lobby Atrium									
ADULTS			Live Guitar with Tony Delaney O'Gills Pub				DJ Requests The Tube		Club 18*21 - Mixer The Tube		JASON BISHOP The Tube		70's Remix with Club DJ Rashaun The Tube									
							Ash & Mike LIVE La Piazza		Ice Breakers The Tube													
VIBE 14-17 YEARS OLD	Youth Activities Open House						Pump It Up						Gender Wars								Mirror, Mirror	
EDGE 11-14 YEARS OLD	Craft Corner		Four Square		GAGA Ball		Ship Factor		That's Hilarious		Gender Wars								Mirror, Mirror			
OCEANEER LAB 3-12 YEARS OLD	Craft Corner		Bingo		Disney Cruise Line Trivia		Pathfinders		Detective School				Glow Jam				Four Square					
			Disney Animation: Creating a Character				Pathfinders		Detective School				Magic PlayFloor									
OCEANEER CLUB 3-12 YEARS OLD	Craft Corner		Scavenger Hunt		Game Challenge																	
			Once Upon a Time		Craft Corner				Magic PlayFloor		Movie Time											

Symbol for activities that will be repeated during the cruise



Youth Activities Open House



FOLD

Fold along the dotted lines and take me with you so you don't miss any of the fun!

FOLD

IN THE SPOTLIGHT SERIES
SOLVE IT! SERIES



JUMP UP! SERIES
CREATE & INVENT SERIES



CLUBHOUSE SERIES
STORYBOOK SERIES



SUNDAY, MARCH 16, 2014 - DAY AT SEA

BUENA VISTA THEATRE

Deck 4 & 5, Midship

DOLBY 3D



8:00 a.m., 5:15 p.m.
& 8:15 p.m.
Duration:
1 hr 48 mins
Rating: PG



10:30 a.m.
Duration:
2 hrs 5 mins
Rating: PG-13



3:15 p.m.
Duration:
1 hr 32 mins
Rating: PG



10:30 p.m.
Duration:
2 hrs 29 mins
Rating: PG-13

Character Appearances

DAISY DUCK
Deck 4, Balcony - 9:15 a.m.
Preludes - 4:45 p.m.

PRINCESS ANNA OF ARENDELLE
Preludes - 9:15 a.m.,
10:45 a.m. & 12:00 p.m.

PRINCESS GATHERING
Lobby Atrium - 10:00 a.m.

PRINCESS SOFIA
Deck 4, Balcony
10:15 a.m. & 11:30 a.m.

PRINCESS MINNIE
Deck 4, Balcony - 11:00 a.m.

STITCH
Deck 4, Balcony - 12:45 p.m.

BUZZ LIGHTYEAR
Lobby Atrium (V)
1:00 p.m. & 2:00 p.m.

CHIP & DALE
Deck 4, Balcony
1:15 p.m. & 4:30 p.m.

WOODY
Lobby Atrium (V)
1:30 p.m. & 2:30 p.m.

MICKEY MOUSE
Deck 4, Balcony - 1:45 p.m.,
2:45 p.m., 5:30 p.m., 7:45 p.m.
& 9:45 p.m.

MINNIE MOUSE
Deck 4, Balcony - 2:15 p.m.,
5:00 p.m., 7:15 p.m. & 10:15 p.m.
Preludes - 4:15 p.m., 5:45 p.m.
& 9:30 p.m.

GOOFY
Preludes - 5:15 p.m.

DONALD DUCK
Deck 4, Balcony
6:00 p.m. & 8:15 p.m.

CINDERELLA
Preludes - 7:15 p.m.

SNOW WHITE
Preludes - 7:45 p.m.

YOUTH ACTIVITIES THEMED EXPERIENCES

CLUBHOUSE SERIES
focuses on movement and features
content which appeals to younger
children.

STORYBOOK SERIES
is designed with a strong connection
to the Disney classic stories.

JUMP UP! SERIES
includes large group games &
movement-oriented activities.

CREATE & INVENT SERIES
will have a tactile focus allowing children
to create and admire their work.

WIN THE SPOTLIGHT SERIES
focuses on children's stage presence
with lots of activities and enthusiasm.

SOLVE IT! SERIES
are less active, but will challenge
children with problem/solutions-based
activities.

YOUTH ACTIVITIES OPEN HOUSE

A non-secured program with activities for families, adults and children of all ages to enjoy together.

SHIP DIRECTORY

YOUTH ACTIVITIES

DISNEY'S OCEANEER CLUB	DECK 5, MID	9:00 AM - 12:00 MID
DISNEY'S OCEANEER LAB	DECK 5, MID	9:00 AM - 1:00 PM
EDGE	DECK 13, MID	9:00 AM - 1:00 PM
VIBE	DECK 4, FWD	9:00 AM - 2:00 PM
IT'S A SMALL WORLD NURSERY	DECK 5, MID	9:00 AM - 11:30 PM

POOLS & MORE

* Children under 12 must have adult supervision in pool areas.		
AQUADUCK	DECK 12, MID	9:00 AM - 11:00 PM
AQUALAB	DECK 12, AFT	10:00 AM - 6:00 PM
DONALD'S POOL	DECK 11, MID	9:00 AM - 6:00 PM 8:00 PM - 10:00 PM
MICKEY'S POOL	DECK 11, MID	6:00 AM - 11:00 PM
MICKEY'S SLIDE	DECK 11, MID	9:00 AM - 6:00 PM
NEMO'S REEF	DECK 11, MID	9:00 AM - 6:00 PM
QUIET COVE POOL (18+)	DECK 11, FWD	6:00 AM - 12:00 MID
SATELLITE FALLS	DECK 13, FWD	6:00 AM - 8:00 PM

RECREATION

GOLF/SPORTS SIMULATORS	DECK 13, AFT	9:00 AM - 6:00 PM
GOOFY GOLF	DECK 13, AFT	8:00 AM - 10:00 PM
GOOFY'S SPORTS DECK	DECK 13, AFT	8:00 AM - 6:00 PM
MIDSHIP DETECTIVE AGENCY	DECKS 2 & 5, MID	9:00 AM - 9:00 PM
PORT ADVENTURES DESK	DECK 5, MID	9:00 AM - 5:00 PM 7:00 PM - 8:30 PM
SENSES FITNESS CENTER (18+)	DECK 11, FWD	6:30 AM - 10:00 PM

GENERAL INFORMATION

ARR-CADE	DECK 11, AFT	24 HOURS
DISNEY VACATION CLUB	DECK 4, MID	9:00 AM - 11:30 AM 2:30 PM - 10:00 PM
GUEST SERVICES	DECK 3, MID	24 HOURS
MEDICAL HEALTH CENTER	DECK 1, FWD	9:30 AM - 11:00 AM 4:30 PM - 7:00 PM
ONBOARD SALES DESK	DECK 4, MID	10:00 AM - 12:00 PM 2:00 PM - 6:00 PM 7:30 PM - 8:30 PM
PORT & SHOPPING DESK	DECK 4, MID	7:30 PM - 8:30 PM
PRELUDES	DECK 3, FWD	2:30 PM - 3:15 PM 5:45 PM - 6:30 PM 8:00 PM - 8:45 PM
SENSES SPA AND SALON	DECK 11, FWD	8:00 AM - 10:00 PM
SHUTTERS PHOTO GALLERY	DECK 4, MID	9:30 AM - 12:00 PM 7:00 PM - 11:00 PM
SHUTTERS DIGITAL	DECK 4, MID	24 HOURS

SHOPPING

BIBBIDI BOBBIDI BOUTIQUE	DECK 5, MID	9:00 AM - 9:00 PM
MICKEY'S MAINSAIL	DECK 3, FWD	9:30 AM - 11:00 PM
QUACKS	DECK 11, MID	10:00 AM - 4:00 PM
SEA TREASURES	DECK 3, FWD	9:30 AM - 11:00 PM
VISTA GALLERY	DECK 4, MID	10:00 AM - 10:00 PM
WHITE CAPS	DECK 3, FWD	9:30 AM - 11:00 PM
WHOZITS & WHATZITS	DECK 11, MID	10:00 AM - 4:00 PM

DINNER MENU
 Animator's Palate: Pacific Rim Cuisine
 Enchanted Garden: Continental Market Cuisine
 Royal Court: French Cuisine
 Dining Times: 5:45 p.m. & 8:15 p.m.

DRINK OF THE DAY
 Bahama Mama (Alcoholic)
 Coco Bali (Non Alcoholic)

WEATHER FORECAST
 Today: Sunny
 High: 84°F/29°C
 Tomorrow: Partly Sunny
 High: 78°F/26°C

Evening Attire: Formal

DINING & LOUNGES

	BREAKFAST		
CABANAS CONTINENTAL	DECK 11, AFT	7:00 AM - 7:30 AM	
CABANAS	DECK 11, AFT	7:30 AM - 11:30 AM	
ENCHANTED GARDEN	DECK 2, MID	8:30 AM - 10:45 AM	
ROYAL COURT	DECK 3, MID	8:00 AM - 9:30 AM	
	LUNCH		
CABANAS	DECK 11, AFT	11:30 AM - 2:00 PM	
FILLMORE'S FAVORITES	DECK 11, MID	11:00 AM - 6:00 PM	
LUIGI'S PIZZA	DECK 11, MID	11:00 AM - 6:00 PM	
ROYAL COURT	DECK 3, MID	12:00 PM - 1:30 PM	
TOW MATER'S GRILL	DECK 11, MID	11:00 AM - 11:00 PM	

	DINNER		
ANIMATOR'S PALATE	DECK 3, AFT	5:45 PM & 8:15 PM	
ENCHANTED GARDEN	DECK 2, MID	5:45 PM & 8:15 PM	
ROYAL COURT	DECK 3, MID	5:45 PM & 8:15 PM	
CABANAS TABLE SERVICE	DECK 11, AFT	6:30 PM - 8:30 PM	
PALO (18+) (RESERVATIONS REQ. & NOM. FEE APPLIES)	DECK 12, AFT	6:00 PM - 8:30 PM	
REMY (18+) (RESERVATIONS REQ. & NOM. FEE APPLIES)	DECK 12, AFT	6:00 PM - 8:30 PM	

	LATE NIGHT SNACKS		
LA PIAZZA (18+)	DECK 4, AFT	10:45 PM - 11:45 PM	
LUIGI'S PIZZA	DECK 11, MID	9:30 PM - 12:30 AM	

	ADDED FEATURES		
BEVERAGE STATION	DECK 11, MID	24 HOURS	
EYE SCREAM	DECK 11, MID	11:00 AM - 11:00 PM	
ROOM SERVICE	DIAL 0	24 HOURS	

ENTERTAINMENT - LOUNGES - BARS

Adults must be 21 and older to consume alcoholic beverages.

BON VOYAGE	DECK 3, MID	9:00 AM - 11:30 PM
COVE BAR (18+)	DECK 11, FWD	10:00 AM - 11:00 PM
COVE CAFE (18+)	DECK 11, FWD	7:00 AM - 12:00 MID
CURRENTS (18+)	DECK 13, FWD	10:00 AM - 11:00 PM
D LOUNGE	DECK 4, MID	SHOWTIMES
FROZONE TREATS	DECK 11, MID	10:00 AM - 10:30 PM
LA PIAZZA (18+ AFTER 9:00 P.M.)	DECK 4, AFT	12:00 PM - 12:00 MID
MERIDIAN (18+)	DECK 12, AFT	10:00 AM - 12:00 MID
O'GILLS PUB (18+ AFTER 9:00 P.M.)	DECK 4, AFT	12:00 PM - 12:00 MID
OOH LA LA (18+)	DECK 4, AFT	5:30 PM - 12:00 MID
OUTLOOK	DECK 14, MID	SUNSET TIMES
SKYLINE (18+)	DECK 4, AFT	5:30 PM - 12:30 PM
THE TUBE (18+ AFTER 9:00 P.M.)	DECK 4, AFT	9:30 PM - 2:00 AM
VISTA CAFE	DECK 4, MID	7:00 AM - 10:30 PM
WAVES	DECK 12, AFT	10:00 AM - 6:00 PM

Consumers who order raw or partially cooked, ready-to-eat food of animal origin, are hereby informed that the food is not sufficiently cooked to ensure its safety.



TIME ZONE CHANGE

Remember to turn your clocks **BACK 1 HOUR**
upon retiring on **SUNDAY** evening, or first
thing **MONDAY** morning.

IMPORTANT NUMBERS

Fire/Security: 7-3001
Medical Emergency: 7-3000
Health Center: 7-1923

(H) Hallway - (S) Starboard Side - (P) Port Side - (V) Vestibule

For details of daily Disney character appearances, refer to the character line on your Navigator Grid, or the digital character board in the Lobby Atrium.