

PERSONAL NAVIGATOR

Sunrise: 6:58 a.m. Sunset: 7:36 p.m.
Evening Attire: Cruise Casual

Today: Overcast High: 78°F/26°C
Tomorrow: Partly Sunny High: 68°F/20°C

WEDNESDAY, APRIL 9, 2014


DAY AT SEA

Disney's Believe

Genie from Aladdin and many of Disney's most beloved magic makers take a father on a magical journey to show him that anything is possible if you just believe.

WALT DISNEY THEATRE
Deck 3 & 4, Forward
6:15 P.M. & 8:30 P.M.

As a courtesy to all Guests, we kindly advise that the saving of seats is **not** permitted in the Walt Disney Theatre.

 Assistance available at the entrance to the Walt Disney Theatre 30 minutes prior to show time.



Disney DREAM Fun Facts

Tonnage: 129,690

Height: 66.13 m (217 feet)

Length: 339.8 m (1114.7 feet)

Important Dates

Name Announcement: March 2009

Steel Cutting: March 2009

Keel Laying: August 2009

Delivery: December 2010

Did you know?

The Sorcerer Mickey Mouse on the Disney Dream's stern is about 14 feet long. Constructed of stainless steel and fiberglass, it weighs approximately 2,500 pounds.

SEA YA' REAL SOON!

Mickey and some of his Disney friends, invite you to join them in the ship's Atrium. You won't want to miss this very special farewell meet and greet.

Bring your cameras!
10:15 p.m.
Lobby Atrium,
Deck 3, Midship

Don't Miss:

Art of The Theme Show Tour (18+)

Meridian, Deck 12, Aft - 9:30 a.m.

Join us on a guided ship tour and discover the key ingredients that make the Disney Dream cruise ship one-of-a-kind.

Making of the Dream

Evolution, Deck 4, Aft - 9:30 a.m.

Evolution, Deck 4, Aft - 1:45 p.m. (18+)

Explore the origins of Disney Cruise Line and the latest and greatest innovations conjured especially for the Disney Dream in this fascinating and entertaining behind-the-scenes program.

Captain's Signing

White Caps, Deck 3, Forward - 12:15 p.m.

Meet the Master of the Disney Dream, Captain Henry, and have your cruise memories signed.

Mickey 200

Evolution, Deck 4, Aft - 2:45 p.m.

Don't eat your vegetables... race them in this wild and wacky charge to the finish line. May the best veggie win! (Limited Availability)

Debark Talk Broadcast

Your Cruise Director, Christiaan, presents important information, including U.S. Customs and Border Protection procedures. Tune in to Channel 5 of your stateroom TV. Please place your luggage outside your stateroom between 8:30 p.m. - 10:30 p.m.

Thank you in advance for completing your comment card.



Visit The Onboard Sales Desk Early Today

Please visit the Onboard Sales Desk, Deck 4, Midship, as early as possible today. The last day of the cruise tends to get busy in the evening, and we want to be sure you have the opportunity to save 10% on your next cruise, receive up to a \$200 onboard credit, and pay a reduced deposit!

DINNER MENU

Animator's Palate: Pacific Rim Crusine
Enchanted Garden: Continental Market
Royal Palace: French Dinner

DRINK OF THE DAY

High Tide (Alcoholic)
Princess Delight (Non Alcoholic)

IMPORTANT NUMBERS

Fire/Security: 7-3001
Medical Emergency: 7-3000
Health Center: 7-1923

ADULT ACTIVITY HIGHLIGHTS

SENSES SPA FITNESS CLASSES & SEMINARS

Body Sculpt Boot Camp - Senses Fitness Center (Nom. Fee) - 8:00 a.m.
Wake Up & Stretch Class - Senses Fitness Center - 9:00 a.m.
Acupuncture: Chinese Herbs - Senses Fitness Center - 9:30 a.m.
Group Cycling - Senses Fitness Center - 10:00 a.m.
Secrets to a Flatter Stomach - Senses Fitness Center - 12:00 p.m.
How to Increase Your Metabolism - Senses Fitness Center - 1:30 p.m.
Acupuncture Seminar: Arthritis and Back Pain Solutions - Senses Fitness Center - 2:00 p.m.
Acupuncture Seminar: Stress, Insomnia and Depression - Senses Fitness Center - 3:00 p.m.
Good Feet: Walking In Comfort - Senses Fitness Center - 3:30 p.m.
Acupuncture Seminar - Senses Fitness Center - 4:00 p.m.
Yoga - Senses Fitness Center - 4:30 p.m.



TASTING CLASSES

Chocolate & Liquor Tasting (21+) - Pink - 12:15 p.m.
Stem to Stern Wine Tasting (21+) - Pink - 1:30 p.m.
Martini Tasting (21+) - Meridian - 2:00 p.m. & 4:00 p.m.
Mixology (21+) - Skyline - 2:00 p.m. & 4:00 p.m.
Mojito & Caipirinha Tasting (21+) - District Lounge - 3:30 p.m.
Tequila & Margarita Tasting (21+) - 687 Pub - 3:30 p.m.
Cognac Tasting (21+) - Meridian - 10:00 p.m.
 Please make reservations for tastings at Guest Services for a nominal fee.
 Tasting Seminars are only for Guests 21 and Older.

CLUB 18*21 - LUNCH

Royal Palace, Deck 3, Midship - 12:30 p.m.
 Get to know your fellow 18*21 guests over a spot of lunch.

CLUB 18*21 - JENGA CHALLENGE

687 Pub, Deck 4, Aft - 5:00 p.m.
 Have some fun with this classic game.

CLUB 18*21 - FAREWELL

Evolution, Deck 4, Aft - 10:15 p.m.
 Join your Cruise Staff and your new friends in this last gathering for some fun

PUB QUIZ

687 Pub, Deck 4, Aft - 10:45 a.m.
 Join us as we test your knowledge against your fellow Guests at our Pub Quiz challenge.

SINGLES' LUNCH

Royal Palace, Deck 3, Midship - 12:15 p.m.
 Single, single parent or just traveling alone? Join your Cruise Staff for an informal gathering for lunch.

50 MOVIE QUOTES TRIVIA

687 Pub, Deck 4, Aft - 1:00 p.m.
 "Life is like a box of Chocolates" Know the movie? Join your Cruise Staff and test your Movie Quote knowledge.



FUN FOR ALL AGES HIGHLIGHTS

WAKE UP WITH DISNEY JUNIOR

D Lounge, Deck 4, Midship - 9:30 a.m.
 What happens when you experience unlimited fun with your favorite Disney Junior shows? You get an exciting dance party designed especially for preschoolers ages seven and under.



\$10,000 MEGA JACKPOT BINGO

D Lounge, Deck 4, Midship - 10:30 a.m.
 It's Big, it's Massive, it's Supersized! It's \$10,000 MEGA Jackpot Bingo! Take home \$10,000 if you can cover your card in 46 numbers or less. If not, we carry on to play for the biggest cash prize of the session, plus today's Disney Vacation Club sponsored raffle includes a \$100 Onboard Credit and prize-packs. Pre Sales start 15 minutes prior to game.



DISNEY VACATION CLUB GROUP PREVIEW

Evolution, Deck 4, Aft - 11:30 a.m.
 Want to learn more about taking magical vacations year after year? Please see a Disney Vacation Club representative on Deck 4, Midship, or call 7-2805 from your stateroom phone for more information about our interactive group presentation.



JACK-JACK'S INCREDIBLE DIAPER DASH

Lobby Atrium, Deck 3, Midship - 11:30 a.m.
 Calling all baby Cruisers! It's time to take to the mat to see who's the fastest crawler of the seven seas! Register your baby 15 minutes prior to the big race.



ANYONE CAN COOK - APPLE STRUDEL

D Lounge, Deck 4, Midship - 12:15 p.m.
 From our galley to yours. Join our chefs as they show you how to prepare delicious dishes. Today's Menu - Apple Strudel



DISNEY ANIMATION: CREATING A CHARACTER

D Lounge, Deck 4, Midship - 1:00 p.m.
 Go behind the scenes at Walt Disney Animation Studios as Walt Disney himself talks about his most famous characters, then learn the basic techniques of drawing Mickey and Donald in this fun and interesting enrichment program.



FINAL JACKPOT BINGO

D Lounge, Deck 4, Midship - 4:15 p.m.
 The snowball jackpot **MUST BE WON** at this final session! Beat the line and get your cards early. Who will be the lucky winner? It could be you! Pre Sales start 30 minutes prior to game.



DISNEY TRIVIA

D Lounge, Deck 4, Midship - 6:15 p.m.
 Navigate your way through a round of questions to test how much you really know about Disney.

OFFICER PIN TRADING

Preludes, Deck 3, Forward - 7:15 p.m.
 Come trade pins with the Officers of the Disney Dream.

YOUTH ACTIVITIES HIGHLIGHTS

Dine & Play

A convenience for families dining at 8:15 p.m., our Youth Activities Counselors will be available at 9:15 p.m. at the entrance of Royal Palace, Enchanted Garden and Animator's Palate dining rooms to bring registered children to join the fun in the Youth Activity areas.



Deck 5 Midship (7-5864) 9:00 a.m. - 12:00 mid

OPEN HOUSE

8:00 a.m. - 9:00 a.m.

Your chance to see our toddler space, It's A Small World Nursery.



Deck 5, Midship (7-1440) 10:00 a.m. - 11:30 p.m.
(3 - 12 years old)

MICKEY'S PUZZLE PLAYTIME

10:15 a.m.

Come and Play with Mickey & friends as they share their favorite games, puzzles and dances!

TOY STORY BOOT CAMP

11:00 a.m.

Join Corporal Green in our own version of boot camp as we learn how to have fun - The Toy Story way!



Deck 5, Midship (7-1445) 9:00 a.m. - 12:00 mid
(3 - 12 years old)

SUPER SLOPPY SCIENCE

10:00 a.m. & 9:30 p.m.

Join Professor Make-O-Mess in some of the most extreme experiments you will ever see in the world of Super Sloppy Science!

STITCH'S ADVENTURE SQUAD

11:15 a.m. & 7:45 p.m.

Stitch, everyone's favorite alien, is making an appearance to share some of his mischievous games and activities.



Deck 13, Midship (7-9743) 10:00 a.m. - 12:00 mid
(11 - 14 years old)

SCAVENGER HUNT

2:45 p.m.

A little friendly competition exploring the ship; see if you can solve the clues and finish first.

GHOST VOYAGERS

9:00 p.m.

The ship has come upon some mysterious waters and strange things are afoot. Join a paranormal expert to help investigate the area and track down any evidence of ghostly beings on the ship.



Entrance on Deck 4, Forward (7-9417)
(14 - 17 years old)

11:00 a.m. - 1:00 a.m.

ANYONE CAN COOK: PIZZA

3:00 p.m.

Anyone can cook as we work together to create some of our favorite treats. From our galley to yours; join our chef as they show to create pizza!

ZOMBIFIED PREMIERE

10:30 p.m.

One time only! Come join us for this exclusive big screen premiere of "Zombified," a film featuring the Teens of Vibe as the cast!

BUENA VISTA THEATRE

Deck 4 & 5, Midship
Today's Movies

Open Captioning

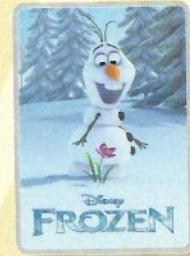


8:00 a.m.
Duration:
1 hr 52 mins
Rating: PG

DOLBY 3D



10:15 a.m.
Duration:
2 hrs 8 mins
Rating: PG-13

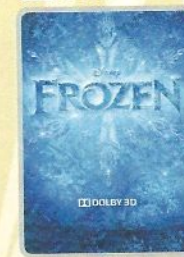


12:45 p.m.
Duration:
1 hr 48 mins
Rating: PG

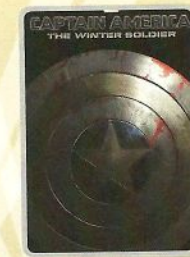
DOLBY 3D



3:15 p.m.
Duration: 1 hr 52 mins
Rating: PG



5:45 p.m. & 8:15 p.m.
Duration: 1 hr 48 mins
Rating: PG

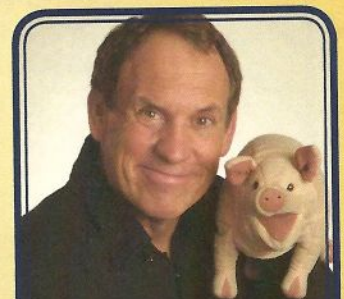


11:15 p.m.
Duration: 2 hrs 8 mins
Rating: PG-13



Bring the entire family and test your Disney knowledge in the high-tech interactive game show, Family Fusion.

D Lounge,
Deck 4, Midship,
9:45 p.m.



ADULT VARIETY ACT

Featuring the Comedy and Ventriloquism of Taylor Mason, as he entertains you in this adult-exclusive show.

Evolution (18+),
Deck 4, Aft,
10:45 p.m.

YOUTH ACTIVITIES OPEN HOUSE

Open House is an opportunity for all to come and participate in a variety of exciting activities and free time in It's A Small World Nursery, the Oceaneer Club, Oceaneer Lab, Edge and Vibe throughout the cruise. During these times secured programming will still be offered in the other venues for those looking to check their children into care.

It's A Small World Nursery: 8:00 a.m. - 9:00 a.m.

Disney's Oceaneer Club: 9:00 a.m. - 10:00 a.m.; 11:30 p.m. - 12:00 mid

Vibe: 10:00 a.m. - 11:00 a.m.; 7:30 p.m. - 8:45 p.m.

Edge: 9:00 a.m. - 10:00 a.m.; 5:30 p.m. - 7:30 p.m.

MORE TO ENJOY WHILE ONBOARD

MORE MAGIC IN THE MEDITERRANEAN

Set sail for Europe in summer 2014! Choose from an array of Mediterranean getaways departing from Barcelona or Venice, including a 12-night cruise that sails to the Greek Isles, Turkey and Malta. Begin your journey today! Visit the Onboard Sales Desk to learn more about our special onboard booking offer.



STAY CONNECTED WITH CELLULAR SERVICE

Cell phone and wireless PDA service is available in Guest staterooms through most plans. Pricing varies depending upon your wireless provider and usually includes International roaming rates.

DISNEY VACATION CLUB® GROUP PREVIEW

Want to learn more about taking magical vacations year after year? Please see a Disney Vacation Club representative on Deck 4, Midship, or call 7-2805 from your stateroom phone for more information about our interactive group presentation.



SALON TASTER SPECIAL

Choose from scalp massage, European facial, hand treatment, sunglow make-over, hair treatment, eye-collagen treatment, foot and ankle massage and neck and shoulder massage.

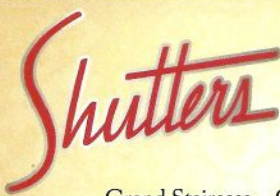
Three for \$99, five for \$119, and eight for \$139.

Senses Spa & Salon, Deck 11, Forward, Ext. 7-1465

PROVENANCE GEMS PRESENTS: THE EXTRAORDINARY COLOR CHANGING GEMSTONE ZULTANITE

Join Tim Phelps from Provenance Gems in White Caps to learn about his amazing collections. Come see one of the rarest stones in the world and experience its color changing qualities. Also try your hand in the Guess the Carat Weight competition and have the chance of winning a jewelry prize. Offer not affiliated with Disney Cruise Line.

WHITE CAPS
Deck 3, Forward



PROFESSIONAL PORTRAITS TONIGHT!

Grand Staircase – Groups Accommodated

5:15 p.m. - 6:00 p.m.
7:15 p.m. - 8:30 p.m.

Create a personal storybook of your cruise to share with family and friends.
Photobook orders close at 10:00 p.m.

EXPRESS WALK-OFF

This option allows you to take your luggage off the ship at your leisure once the ship has been cleared by the local authorities. You won't need to wait for your luggage to enter the terminal and there is no need to claim it inside the terminal building. Please note that no assistance with luggage is provided for this option.

MIDSHIP DETECTIVE AGENCY

Use your detective know-how and our special detective "badge" to search the ship and catch your criminal! Deck 5, Midship Kiosks.

Connect @ Sea

We are now offering a NEW and improved Internet service to stay connected on your cruise like no other in the industry! Internet packages range from \$0.25 per MB - \$89.00 (1000 MB package). For more information contact your Connect@Sea Expert or Guest Services onboard.

FREE ON DEMAND TV

Watch Disney movies, Hollywood features, and even captioned content, plus much more "On Demand" for FREE in the comfort of your stateroom! Bookmark your movie and come back to watch it later. Press MENU on your stateroom television remote control and follow the prompts.

SHOPPING

TAX AND DUTY FREE HIGHLIGHT

Any liquor purchases you have made throughout the voyage will be delivered to your stateroom today, packaged safely for your journey home. Experience the fragrances, jewelry, and liquors we have onboard at excellent duty free prices tonight as we will not be open in Port Canaveral. Satisfy your sweet tooth with our selection of Godiva chocolate. White Caps, Deck 3, Forward.

CAPTAIN'S SIGNING

Come to White Caps at 12:15 p.m. to have your Disney Dream merchandise signed by the Master of the Disney Dream, Captain Henry. Stunning replica ships are available in Sea Treasures, Deck 3, Forward. Beautiful Disney Cruise Line® prints are available in the Vista Gallery, Deck 4, Midship.

POOLSIDE SHOPPING

Located right by the pool, Whozits & Whatzits has everything you will need from sunscreen to sunglasses and towels to tees. The official home of Aquaduck merchandise, visit Whozits & Whatzits, Deck 11, Midship.

GREAT REASON TO SHOP ONBOARD!

Stop by White Caps, Deck 3 Forward, and receive a Disney Cruise Line® pillow for \$16.95 with any merchandise purchase of \$30.00 or more and/or a Disney Cruise Line® throw for \$24.95 with any merchandise purchase of \$40.00 or more. While supplies last. Offer not valid on previous purchases. Offer subject to change without notice.

LAST CHANCE TO VISIT THE VISTA GALLERY

Don't miss your last chance to visit the Vista Gallery where you can admire beautiful artwork created by various celebrated artists and featuring some of your favorite Disney characters. From original canvas paintings to smaller print copies, the Vista Gallery offers the opportunity for you to take some of the magic home! Deck 4, Midship.

IMPORTANT INFORMATION

Security Notice

All Guests (including children) who wish to disembark the ship are required to present their Key to the World card at the gangway. A photo ID is also required for those Guests who are 18 years of age or older. Guests under the age of 18 are required to have a parent, guardian or other responsible adult sign an authorization form at the Guest Service Desk if they wish to go ashore unaccompanied or with any adult from another stateroom.

Sunscreen/Insect Repellent Advisory
Use sunscreen first and protect against mosquito borne illnesses by applying insect repellent on top of sunscreen when going ashore.

Cold and Flu Reminder

Please wash hands frequently and thoroughly, particularly before meals. Contact the Health Center by dialing 7-1923, should anyone in your party become ill.

Corridor Quiet Hours

As a courtesy to all our Guests, please recognize quiet hallway hours from 10:00 p.m. - 8:00 a.m.

Inclement Weather

For the safety of all Guests, outdoor events may be changed due to unforeseen weather conditions.

Environmental Message

With Disney's commitment to the environment, please refrain from throwing anything over the ship's side. Thank you!

No Reserved Seats Policy

As a courtesy to all our Guests, we kindly advise that the saving of seats is not permitted in the Walt Disney Theatre, and the saving of the sun loungers is not permitted on Deck 11, 12 and 13. Items left unattended will be returned to lost and found at Guest Services, Deck 3, Midship.

Smoking

For the comfort of our guests the following areas are designated as Smoking areas:

- Deck 13, Forward, port side, by "Currents"
- Deck 12, Aft, port side outdoor area that is accessible through the Meridian Lounge
- Deck 4, Aft, port side from 6:00 p.m. to 6:00 a.m. only (all of Deck 4 is no smoking from 6:00 a.m. to 6:00 p.m.)
- Smoking is prohibited inside all Guest staterooms and on stateroom verandahs. Guests found smoking in their staterooms or on their verandahs will be charged a \$250 stateroom recovery fee. Electronic cigarettes may only be used in designated smoking areas.

Walt Disney Theatre

Theatrical performances may use artificial fog, strobe lights, pyrotechnics and other special effects. For the safety of our performers and the comfort of those around you, the use of any photography, video recording devices or any electronic equipment is prohibited.

Verandah Safety

Please do not leave any combustible materials on your balcony when not present in your stateroom for safety reasons.

Morning	8:30	8:45	9:00	9:15	9:30	9:45	10:00	10:15	10:30	10:45	11:00	11:15	11:30	11:45	12:00	12:15	12:30	12:45	1:00	1:15	1:30															
FUNNEL VISION	Mary Poppins (G) Funnel Vision						Pixar Short Films (G) Funnel Vision						Disney Movie Challenge Poolside Funnel Vision																							
BUENA VISTA THEATRE	Muppets Most Wanted (PG) Open Captioning Duration: 1 Hour 52 Minutes < 8:00 a.m.						Captain America: The Winter Soldier (PG-13) DOLBY 3D Duration: 2 Hours 8 Minutes						Frozen (PG) Duration: 1 Hour 48 Minutes																							
CHARACTERS	Princess Gathering Lobby Atrium						Princess Minnie Deck 4, Balcony						Donald Duck Preludes						Character Dance Party Lobby Atrium						Mickey & Pluto Deck 4, Balcony											
FUN FOR ALL AGES	Open House It's A Small World Nursery <8:00 a.m.		Coloring Time D Lounge		 D Lounge		Bingo Pre Sales		\$10,000 Mega Jackpot BINGO D Lounge		 Lobby Atrium		 D Lounge - Apple Strudel		 Creating a Character																					
	Morning Walk Deck 4, Port Side		Little Einstein's Adventure Disney's Oceaneer Club		Making of the Dream Evolution				Disney Vacation Club Group Preview Evolution		Captain's Signing White Caps																									
ADULTS	Friends of Bill W. Outlook < 8:00 a.m.						Art of The Theme Show Tour Meridian						Pub Quiz 687 Pub						Singles' Lunch Royal Palace						50 Movie Quotes Trivia 687 Pub											
	Wake Up & Stretch Class Senses Fitness Center												Secrets to a Flatter Stomach Senses Fitness Center						Club 18*21 - Lunch Royal Palace																	
VIBE 14-17 YEARS OLD							Youth Activities Open House						Football Tournament						Zombified																	
EDGE 11-14 YEARS OLD	Youth Activities Open House						Zumba						Bingo						Super Sloppy Science						Ice Cream Social											
OCEANEER LAB 3-12 YEARS OLD							Super Sloppy Science						Stitch's Adventure Squad												Get the Hook											
OCEANEER CLUB 3-12 YEARS OLD	Youth Activities Open House						Mickey's Puzzle Playtime						Toy Story Boot Camp						Picture This						Lunch						Heffalump Hunting					
	Little Einstein's Adventure																																			
Afternoon	1:45	2:00	2:15	2:30	2:45	3:00	3:15	3:30	3:45	4:00	4:15	4:30	4:45	5:00	5:15	5:30	5:45	6:00	6:15	6:30	6:45															
FUNNEL VISION							Disney Channel on Deck Funnel Vision						The Jungle Book (G) Funnel Vision						Fantasia (G) Funnel Vision																	
BUENA VISTA THEATRE							Muppets Most Wanted (PG) Duration: 1 Hour 52 Minutes												Frozen (PG) DOLBY 3D Duration: 1 Hour 48 Minutes																	
CHARACTERS	Chip & Dale Lobby Atrium (P)						Goofy & Donald Preludes						Mickey Mouse Deck 4, Balcony						Goofy Lobby Atrium (V)						Donald Preludes											
FUN FOR ALL AGES	Towel Folding D Lounge		 District Lounge		 Walt Disney Theatre		Bingo Pre Sales		Final Jackpot BINGO D Lounge		Live Music with Rob Sanders District Lounge		Live Music with The Dreamers Lobby Atrium		Disney Trivia D Lounge		 Walt Disney Theatre																			
	Disney Trivia District Lounge		 Evolution (limited availability)		 Evolution (limited availability)		 Deck Stage																													
ADULTS	Making of the Dream Evolution						Anyone Can Cook - Lobster Ravioli D Lounge						Mixology (21+) Skyline						Club 18*21 - Jenga Challenge 687 Pub						Xbox® Kinect™ Challenge 687 Pub											
	Increase Your Metabolism Senses Fitness Center						Acupuncture Seminar Senses Fitness Center						Good Feet: Walking In Comfort Senses Fitness Center						Live Steel Drums with Ravon Rhoden Quiet Cove						Singles' Mingle Pink											
VIBE 14-17 YEARS OLD	Zombified DJ Training						Anyone Can Cook: Pizza						Sun Deck Fun						Sports Deck Fun						Karaoke											
EDGE 11-14 YEARS OLD	Ship Factor						Scavenger Hunt						Picture This						Sports Deck Fun						Youth Activities Open House											
OCEANEER LAB 3-12 YEARS OLD	Anyone Can Cook						Pirates of the Caribbean: Tides of Fortune						Piston Cup Challenge						Dinner						Monster's Inc: Open "Mike" Night											
OCEANEER CLUB 3-12 YEARS OLD	Magic Show						Aloha Luau						Cruisin' with Crush						Once Upon a Time						Magic PlayFloor											
Evening	7:00	7:15	7:30	7:45	8:00	8:15	8:30	8:45	9:00	9:15	9:30	9:45	10:00	10:15	10:30	10:45	11:00	11:15	11:30	11:45	12:00															
FUNNEL VISION	Cinderella (G) Funnel Vision						The Princess and the Frog (G) Funnel Vision						Enchanted (PG) Funnel Vision																							
BUENA VISTA THEATRE							Frozen (PG) DOLBY 3D Duration: 1 Hour 48 Minutes												Captain America: The Winter Soldier (PG-13) Duration: 2 Hours 8 Minutes																	
CHARACTERS	Mickey Mouse Deck 4, Balcony						Minnie Mouse Lobby Atrium (V)						 Lobby Atrium						Live Music with Rob Sanders Lobby Atrium																	
FUN FOR ALL AGES	Family Dance Party Evolution		Family Superstar Karaoke D Lounge		 Walt Disney Theatre		 Walt Disney Theatre		 D Lounge		Live Music with The Dreamers Lobby Atrium		Family Superstar Karaoke D Lounge		 Evolution																					
	Officer Pin Trading Preludes																																			
ADULTS	NBA Basketball: Heat vs. Grizzlies 687 Pub (Subject to satellite availability)						80's Music Challenge Evolution						The Comedy & Venoblogiquism of TAYLOR MASON Evolution						Club DJ Six 4 Evolution																	
	MLB: Houston Astros vs. Toronto Blue Jays 687 Pub (Subject to satellite availability)						Live Music with Rob Sanders District Lounge						Cruise Staff DJ Evolution						Club 18*21 - Farewell Evolution																	
VIBE 14-17 YEARS OLD	Youth Activities Open House						Pump It Up						Zombified Premiere						Bring It!																	
EDGE 11-14 YEARS OLD	Open House						Karaoke						Ghost Voyagers						Gender Wars						Farewell Dance Party											
OCEANEER LAB 3-12 YEARS OLD	Magic PlayFloor						Stitch's Adventure Squad						Magic PlayFloor						Super Sloppy Science						GAGA Ball											
OCEANEER CLUB 3-12 YEARS OLD	Big Top Fun Fest!						Pluto's Pajama Party						Parachute Games						Magic PlayFloor						Open House											

Symbol for activities that will be repeated during the cruise



FOLD

Fold along the dotted lines and take me with you so you don't miss any of the fun!

FOLD

WITH THE SPOTLIGHT SERIES
SOLVE IT! SERIES

JUMP UP! SERIES
CREATE & INVENT SERIES
OPEN HOUSE

CLUBHOUSE SERIES
STORYBOOK SERIES

WEDNESDAY, APRIL 9, 2014 - DAY AT SEA

BUENA VISTA THEATRE

Deck 4 & 5, Midship

				
8:00 a.m. Duration: 1 hr 52 mins Rating: PG	10:15 a.m. Duration: 2 hrs 8 mins Rating: PG-13	3:15 p.m. Duration: 1 hr 52 mins Rating: PG	5:45 p.m. & 8:15 p.m. Duration: 1 hr 48 mins Rating: PG	11:15 p.m. Duration: 2 hrs 8 mins Rating: PG-13

Character Appearances

- PRINCESS GATHERING**
Lobby Atrium - 9:00 a.m.
- PRINCESS MINNIE**
Deck 4, Balcony - 9:15 a.m.
- DONALD DUCK**
Preludes
10:30 a.m. & 5:45 p.m.
- CHARACTER DANCE PARTY**
Lobby Atrium - 12:15 p.m.
- MICKEY & PLUTO**
Deck 4, Balcony - 1:15 p.m.
- CHIP & DALE**
Lobby Atrium (P) - 2:15 p.m.
- RAPUNZEL**
Deck 4, Balcony - 3:00 p.m.
- GOOFLY & DONALD**
Preludes - 3:00 p.m.
- MICKEY MOUSE**
Deck 4, Balcony & 7:30 p.m.
- PLUTO**
Lobby Atrium (V)
5:15 p.m.
- DAISY DUCK**
Preludes - 5:15 p.m.
- GOOFLY**
Lobby Atrium (V) - 5:45 p.m.
- MINNIE MOUSE**
Lobby Atrium (V) - 7:30 p.m.
- DISNEY PRINCESSES**
D Lounge - 7:30 p.m.
- SEA YA REAL SOON**
Lobby Atrium - 10:15 p.m.



(H) Hallway - (S) Starboard Side - (P) Port Side - (V) Vestibule
For details of daily Disney character appearances, refer to the character line on your Navigator Grid, or the digital character board in the Lobby Atrium.

YOUTH ACTIVITIES THEMED EXPERIENCES

- CLUBHOUSE SERIES**
focuses on movement and features content which appeals to younger children.
- STORYBOOK SERIES**
is designed with a strong connection to the Disney classic stories.
- JUMP UP! SERIES**
includes large group games & movement-oriented activities.
- CREATE & INVENT SERIES**
will have a tactile focus allowing children to create and admire their work.
- SPOTLIGHT SERIES**
focuses on children's stage presence with lots of activities and enthusiasm.
- SOLOVE IT! SERIES**
will have a tactile focus allowing children with problem/solutions-based activities.

OPEN HOUSE

activities for families, adults and children of all ages to enjoy together.

SHIP DIRECTORY

DISNEY'S OCEANEER CLUB Deck 5, Mid	10:00 AM - 11:30 PM
DISNEY'S OCEANEER LAB Deck 5, Mid	9:00 AM - 12:00 MID
EDGE Deck 13, Mid	10:00 AM - 12:00 MID
VIBE Deck 4, Fwd	11:00 AM - 1:00 AM
IT'S A SMALL WORLD NURSERY Deck 5, Mid	9:00 AM - 12:00 MID

POOLS & MORE
* Children under 12 must have adult supervision in pool areas.

AQUADUCK Deck 12, Aft	9:00 AM - 11:00 PM
DONALD'S POOL Deck 11, Mid	9:00 AM - 6:00 PM
MICKEY'S POOL Deck 11, Mid	6:00 AM - 12:00 MID
MICKEY'S SLIDE Deck 11, Mid	9:00 AM - 6:00 PM
NEMO'S REEF Deck 11, Mid	9:00 AM - 6:00 PM
QUIET COVE POOL (18+) Deck 11, Fwd	6:00 AM - 12:00 MID

RECREATION

GOLF/SPORTS SIMULATORS Deck 13, Aft	9:00 AM - 6:00 PM
GOOFLY GOLF Deck 13, Aft	8:00 AM - 10:00 PM
GOOFLY'S SPORTS DECK Deck 13, Aft	12:00 MID - 10:00 AM
MIDSHIP DETECTIVE AGENCY Deck 5, Mid	8:00 AM - 11:00 PM
PORT ADVENTURES DESK Deck 5, Mid	6:00 AM - 10:00 PM
SENSES FITNESS CENTER (18+) Deck 11, Fwd	6:00 AM - 10:00 PM

GENERAL INFORMATION

ARR-CADE Deck 11, Aft	24 HOURS
BUENA VISTA THEATRE Deck 4 & 5, Mid	SHOWTIMES
DISNEY VACATION CLUB Deck 4, Mid	9:00 AM - 11:00 AM 1:30 PM - 10:00 PM
GUEST SERVICES Deck 3, Mid	24 HOURS
HAIRBRAIDING Deck 11, Mid	8:00 AM - 9:30 PM
MEDICAL HEALTH CENTER Deck 1, Fwd	9:30 AM - 11:00 AM 4:30 PM - 7:00 PM
ONBOARD SALES DESK Deck 4, Mid	9:00 AM - 12:00 PM 2:30 PM - 10:30 PM
PORT & SHOPPING DESK Deck 4, Mid	9:00 AM - 6:30 PM
PRELUDES Deck 3, Fwd	8:00 PM - 8:45 PM
SENSES SPA AND SALON Deck 11, Fwd	8:00 AM - 10:00 PM
SHUTTERS PHOTO GALLERY Deck 4, Mid	10:00 AM - 11:00 PM
WALT DISNEY THEATRE Deck 3 & 4, Fwd	SHOWTIMES

MICKEY'S MAINSAIL Deck 3, Fwd	9:00 AM - 11:30 PM
SEA TREASURES Deck 3, Fwd	9:00 AM - 11:30 PM
QUACKS Deck 11, Mid	
VISTA GALLERY Deck 4, Mid	10:00 AM - 11:00 PM
WHITE CAPS Deck 3, Fwd	9:00 AM - 11:30 PM
WHOZITS & WHATZITS Deck 11, Mid	10:00 AM - 4:00 PM 7:00 PM - 10:00 PM

IMPORTANT NUMBERS

- Fire/Security: 7-3001
- Medical Emergency: 7-3000
- Health Center: 7-1923

DINNER
Animators' Palace: Pacific Rim Cuisine
Enchanted Garden: Continental Market Cuisine
Royal Palace: French Dinner
Dining Times: 5:45 p.m. & 8:15 p.m.

DRINK OF THE DAY
High Tide (Alcoholic)
Princess Delight (Non-Alcoholic)
Today: Overcast
High: 78°F/26°C
Tomorrow: Partly Sunny
High: 68°F/20°C

WEATHER FORECAST

Evening Attire: Cruise Casual

DINING & LOUNGES

BRUNCH

CABANAS CONTINENTAL Deck 11, Aft	7:00 AM - 7:30 AM
CABANAS Deck 11, Aft	7:30 AM - 11:30 AM
ENCHANTED GARDEN Deck 2, Mid	9:00 AM - 10:45 AM
ROYAL PALACE Deck 3, Mid	8:00 AM - 9:30 AM

LUNCH

CABANAS Deck 11, Aft	12:00 PM - 2:00 PM
ENCHANTED GARDEN Deck 2, Mid	12:00 PM - 1:30 PM
FILMORE'S FAVORITES Deck 11, Mid	11:00 AM - 6:00 PM
LUIGI'S PIZZA Deck 11, Mid	11:00 AM - 6:00 PM
ROYAL PALACE Deck 3, Mid	12:00 PM - 1:30 PM
TOW MATER'S GRILL Deck 11, Mid	11:00 AM - 6:00 PM

DINNER

ANIMATOR'S PALACE Deck 3, Aft	5:45 PM & 8:15 PM
ENCHANTED GARDEN Deck 2, Mid	5:45 PM & 8:15 PM
ROYAL PALACE Deck 3, Mid	5:45 PM & 8:15 PM
PALO & REMY Deck 12, Aft	6:00 PM - 9:00 PM
<small>(RESERVATIONS REQUIRED & COVER CHARGE APPLICABLE, DIAL#7-9734)</small>	
TOW MATER'S GRILL Deck 11, Mid	6:00 PM - 11:00 PM

LATE NIGHT SNACKS

LUIGI'S PIZZA Deck 11, Mid	9:30 PM - 12:00 MID
--------------------------------------	---------------------

ADDED FEATURES

BEVERAGE STATION Deck 11, Mid	24 HOURS
EYE SCREAM Deck 11, Mid	11:00 AM - 12:00 MID
ROOM SERVICE DIAL 0	CLOSES AT 1:30 AM

ENTERTAINMENT - LOUNGES - BARS

Adults must be 21 and older to consume alcoholic beverages.

687 PUB (18+ AFTER 9:00 PM) Deck 4, Aft	11:00 AM - 12:30 AM
BON VOYAGE Deck 3, Mid	9:00 AM - 11:00 PM
COVE BAR (18+) Deck 11, Fwd	9:30 AM - 10:30 PM
COVE CAFE (18+) Deck 11, Fwd	7:00 AM - 12:00 MID
CURRENTS (18+) Deck 13, Fwd	10:00 AM - 11:00 PM
D LOUNGE Deck 4, Mid	SHOWTIMES
DISTRICT LOUNGE (18+ AFTER 9:00 PM) Deck 4, Aft	10:30 AM - 12:00 MID
EVOLUTION (18+) Deck 4, Aft	9:30 PM - 2:00 AM
FROZONE TREATS Deck 11, Mid	11:00 PM - 1:00 AM
MERIDIAN (18+) Deck 12, Aft	5:00 PM - 12:00 MID
OUTLOOK Deck 14, Mid	SUNSET TIMES
PINK (18+) Deck 4, Aft	5:00 PM - 12:00 MID
SKYLINE (18+) Deck 4, Aft	5:00 PM - 12:00 MID
VISTA CAFE Deck 4, Mid	7:30 AM - 11:00 PM
WAVES Deck 12, Aft	10:00 AM - 7:00 PM

Public Health Advisory: Consuming raw or under-cooked meats, poultry, seafood, shellfish, or eggs may increase your risk for food borne illness, especially if you have certain medical condition.

PRINCESS GATHERING

Don't miss your chance to see this Royal gathering today in the Lobby Atrium.
9:00 a.m.

CHARACTER DANCE PARTY

Put your dancing shoes on and join some of your favorite Disney Friends in the Lobby Atrium.
Deck 3, Midship for fun and dancing.
12:15 p.m.

