

PERSONAL NAVIGATOR



MONDAY, MARCH 17, 2014

Sunrise: 7:17 a.m. Sunset: 7:20 p.m.

Evening Attire: Optional Dress Up

All Ashore: 9:30 a.m.

All Aboard: 5:45 p.m.

Gangway: Deck 1, Midship/Deck 1, Forward

Today: Partly Cloudy High: 76°F/24°C

Tomorrow: Partly Cloudy High: 76°F/24°C

NASSAU, BAHAMAS



WALT DISNEY THEATRE
DECK 3 & 4, FORWARD
6:15 P.M. & 8:30 P.M.

As a courtesy to all Guests, we kindly advise that the saving of seats is **not** permitted in the Walt Disney Theatre.

ST. PATRICK'S DAY

Nassau Port Information

While you will find many great experiences in Nassau, there have been reports of increased crime, including assaults and robberies involving tourists in the area. As in any large city, you'll want to take some basic precautions to make the most of your time ashore.

- Be aware of your surroundings at all times, just as you would in your normal daily activities.
- Avoid short cuts, narrow alleys or poorly lit streets. We recommend that guests only visit the downtown shopping areas and other tourist locations.
- Leave valuables in your room safe and avoid carrying large amounts of cash. Exercise caution when using ATMs. Cameras and handbags should be carried out of sight and secured to your person with a strap.
- Leave passports, air transportation tickets and other travel documents in your room safe. When going ashore, each adult is required to carry a Driver's license, copy of passport or other government-issued photo ID.
- If traveling by taxi, use only licensed taxi operators.
- In general, use the same level of precaution you would use in any tourist destination.
- Most crimes are easier to commit in dark unlit areas. You should stay out of these types of areas and consider returning to the ship before nightfall. If you stay out at night, please be extra vigilant about your personal safety.

Disney's
Mirror Mirror
GAME SHOW

Join the Magic Mirror and Dopey in the fairest game show of them all, Mirror, Mirror. There's trivia, singing and even a relay race. Hi Ho, Hi Ho, its off to play we go!

9:45 p.m.
D Lounge,
Deck 4, Midship

Don't Miss:



Making of the Dream

Evolution, Deck 4, Aft - 11:30 a.m.

Evolution, Deck 4, Aft - 2:00 p.m. (Guests 18+ only)

Explore the origins of Disney Cruise Line and the latest and greatest innovations conjured especially for the Disney Dream in this fascinating and entertaining behind-the-scenes program.

Art of The Theme Show Tour (18+)

Meridian, Deck 12, Aft - 2:45 p.m.

Join us on a guided ship tour and discover the key ingredients that make the Disney Dream cruise ship one-of-a-kind.

So You Think You Know Your Family?

Evolution, Deck 4, Aft - 7:30 p.m.

This fun-filled family game show is always full of surprises. Find out how well you know, or don't know your family!

St. Paddy's Celebration

687 Pub, Deck 4, Aft - 10:15 p.m.

Join us for a St. Patrick's Day celebration full of Irish songs, dancing and a fun Irish time.

Disney Cruise Line

PORT ADVENTURES



Welcome to Nassau, capital of the Bahamas. It is not too late to book an amazing adventure to Blue Lagoon Island, Atlantis, or you could book a snorkeling adventure.

All Port Adventures meet onboard the ship in Nassau. Please check your tour tickets for meeting times and locations.

DINNER MENU

Animator's Palate: Pacific Rim Cuisine
Enchanted Garden: Continental Market
Royal Palace: French Dinner

DRINK OF THE DAY

Green Flash (Alcoholic)
Virgin Mojito (Non Alcoholic)

IMPORTANT NUMBERS

Fire/Security: 7-3001
Medical Emergency: 7-3000
Health Center: 7-1923

FUN FOR ALL AGES HIGHLIGHTS

DISNEY CRUISE LINE TRIVIA

687 Pub, Deck 4, Aft - 12:15 p.m.

Navigate your way through a round of questions testing your Disney Cruise Line knowledge.



CHIP-IT GOLF (12+)

Lobby Atrium, Deck 3, Midship - 1:45 p.m.

It's par for the course for our Guests 12 and older to compete on our special "greens" in this fun tournament.



DISNEY ANIMATION: CREATING A CHARACTER

D Lounge, Deck 4, Midship - 2:15 p.m.

Go behind the scenes at Walt Disney Animation Studios as Walt Disney himself talks about his most famous characters, then learn the basic techniques of drawing Mickey and Donald in this fun and interesting enrichment program.



JAM FEST AT SEA

Deck Stage, Deck 11, Midship - 3:30 p.m.

Are you ready for a jammin' good time? Imagine your favorite Disney Channel music and stars coming together to create the biggest Jam Fest at Sea! Great music, cool music videos and hot dance moves that are off the charts. Come out to be part of the action!



DISNEY VACATION CLUB GROUP PREVIEW

D Lounge, Deck 4, Midship - 4:30 p.m.

Want to learn more about taking magical vacations year after year? Please see a Disney Vacation Club representative on Deck 4, Midship, or call 7-2805 from your stateroom phone for more information about our interactive group presentation.



MIRROR, MIRROR

D Lounge, Deck 4, Midship - 9:45 p.m.

Head to D Lounge for the fairest game show of them all, Mirror, Mirror featuring the Magic Mirror and everyone's favorite dwarf, Dopey.

CLUB D DANCE PARTY

D Lounge, Deck 4, Midship - 10:45 p.m.

Join your snazzy Cruise Staff as we turn D-Lounge into an electrifying family nightclub featuring appearances from some of your favorite Disney Characters. Club D, where everyone is a V.I.P.!



ADULT ACTIVITY HIGHLIGHTS

SENSES SPA FITNESS CLASSES & SEMINARS



Body Sculpt Boot Camp - Senses Fitness Center (Nom. Fee) - 8:00 a.m.

Acupuncture Seminar: Stress, Insomnia and Depression - Senses Fitness Center - 9:00 a.m.

Wake Up & Stretch Class - Senses Fitness Center - 9:00 a.m.

Group Cycling - Senses Fitness Center - 11:15 a.m.

How to Increase Your Metabolism - Senses Fitness Center - 2:00 p.m.

Acupuncture Digestive Clinic - Senses Fitness Center - 3:00 p.m.

Arthritis and Back Pain Solutions - Senses Fitness Center - 4:00 p.m.

Yoga - Senses Fitness Center - 4:30 p.m.

TASTING CLASSES

Mixology (21+) - Skyline - 4:00 p.m.

Martini Tasting (21+) - Meridian - 4:00 p.m.

Champagne Tasting (21+) - Pink - 4:15 p.m.

Please make reservations for tastings at Guest Services for a nominal fee. Tasting Seminars are only for Guests 21 and Older.



CLUB 18*21 - MINI GOLF

Goofy's Sports Deck, Deck 13, Aft - 3:00 p.m.

Can you get a hole in one? Give it a try with some mini golf.

CLUB 18*21 - MIXER

Evolution, Deck 4, Aft - 10:00 p.m.

Come to join fellow cruisers your own age at our exclusive Club 18*21 event.

SINGLES' MINGLE

Pink, Deck 4, Aft - 5:15 p.m.

Single, single parent or just traveling alone? Join your Cruise Staff for an informal gathering.

MATCH YOUR MATE

Evolution, Deck 4, Aft - 10:30 p.m.

It's time to play everyone's favorite couples game show - Match Your Mate!



REWIND FEATURING CLUB DJ AKSHEN

Evolution, Deck 4, Aft - 11:00 p.m.

Join your Club Host and the Cruise Staff as our Club DJ, Akshen, plays amazing mixes of your favorite 70's and 80's tunes - it'll be like being back in college again!

\$5,000 MEGA JACKPOT BINGO



Buena Vista Theatre,
Deck 4 & 5, Midship

Card Sales - 4:00 p.m.

Game Starts - 4:15 p.m.

Don't miss your chance to take home big money! 4 CASH prize games and great raffle prizes to be won! Complete the fourth game in 46 numbers or less and win the \$5,000 Mega Jackpot!

SENSES SPA BINGO

D Lounge, Deck 4, Midship

Card Sales - 7:15 p.m.

Game Starts - 7:30 p.m.

Four CASH prizes to be won! Plus great spa prizes that will pamper you, including a mini facial and massages all courtesy of the Senses Spa and Salon. Serenity now!

YOUTH ACTIVITIES HIGHLIGHTS

DINE & PLAY

A convenience for families dining at 8:15 p.m., our Youth Activities Counselors will be available at 9:15 p.m. at the entrance of Royal Palace, Enchanted Garden and Animator's Palate dining rooms to bring registered children to join the fun in the Youth Activity areas.



Deck 5, Midship (7-5864) 9:00 a.m. - 12:00 mid

OPEN HOUSE

8:00 a.m. - 9:00 a.m.

Your chance to see our toddler space, It's A Small World Nursery.



Deck 5, Midship (7-1440) 11:30 a.m. - 12:00 mid
(3 - 12 years old)

MICKEY'S PUZZLE PLAYTIME

9:30 a.m.

Come and Play with Mickey & friends as they share their favorite games, puzzles and dances!

TOY STORY BOOT CAMP

4:15 p.m.

Join Corporal Green in our own version of boot camp as we learn how to have fun - The Toy Story way!



Deck 5, Midship (7-1445) 9:00 a.m. - 1:00 a.m.
(3 - 12 years old)

ANIMATION ANTICS

9:15 a.m. & 9:30 p.m.

Learn simple animation techniques and then put your new skills to use by drawing some of your favorite Disney Characters.

STITCH'S ADVENTURE SQUAD

1:00 p.m.

Stitch, everyone's favorite alien, is making an appearance to share some of his mischievous games and activities.



Deck 13, Midship (7-9743) 10:00 a.m. - 1:00 a.m.
(11 - 14 years old)

THAT'S HILARIOUS

9:30 p.m.

Ever wanted to show off your comedy skills? Then be a part of the cast for the crazy improv show "That's Hilarious" and put on a live show for your friends.

PAJAMARAMA MOVIE NIGHT

11:30 p.m.

Put your PJs on and come and join us for a movie.



Entrance on Deck 4, Forward (7-9417)
(14 - 17 years old)
11:00 a.m. - 2:00 a.m.

CROWNING OF THE COUCH POTATO

5:45 p.m.

Do you think you know your movies, TV and commercials? Well it's time to test your knowledge on all the recent releases.

GHOST VOYAGERS

11:30 p.m.

The ship has come upon some mysterious waters and strange things are afoot. Join a paranormal expert to help investigate the area and track down any evidence of ghostly beings on the ship.

BUENA VISTA THEATRE

Deck 4 & 5, Midship
Today's Movies

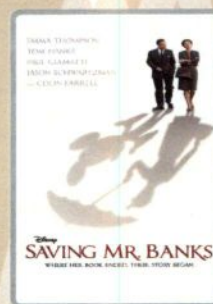
DOLBY 3D



11:30 a.m.
Duration: 1 hr 48 mins
Rating: PG



5:45 p.m. & 8:15 p.m.
Duration: 1 hr 48 mins
Rating: PG



11:00 p.m.
Duration: 2 hrs 5 mins
Rating: PG-13



Bring the family out to this interactive dance party featuring The Three Amigos. We will party with Donald Duck, learn Salsa, Merengue and have a Latin good time!

D Lounge,
Deck 4, Midship,
10:15 p.m.



It's time to play everyone's favorite couple's game show, Match your Mate!

Evolution (18+),
Deck 4, Aft,
10:30 p.m.

YOUTH ACTIVITIES OPEN HOUSE

Open House is an opportunity for all to come and participate in a variety of exciting activities and free time in It's A Small World Nursery, the Oceaneer Club, Oceaneer Lab, Edge and Vibe throughout the cruise. During these times secured programming will still be offered in the other venues for those looking to check their children into care.

It's a Small World Nursery: 8:00 a.m. - 9:00 a.m.

Disney's Oceaneer Lab: 3:30 p.m. - 5:00 p.m.

Disney's Oceaneer Club: 9:00 a.m. - 11:30 a.m.

Vibe: 10:00 a.m. - 11:00 a.m.

Edge: 9:00 a.m. - 10:00 a.m.

MORE TO ENJOY WHILE ONBOARD

PLAN YOUR NEXT GETAWAY NOW

Our 3 and 4 night Bahamian Cruises are a perfect way to get an instant tropical recharge! Departing from Miami or Port Canaveral, most Bahamian cruises include a stop at Disney's private island, Castaway Cay. Visit the Onboard Sales Desk today and ask about our special onboard booking offer.

DISNEY VACATION CLUB® GROUP PREVIEW

Want to learn more about taking magical vacations year after year? Please see a Disney Vacation Club representative on Deck 4, Midship, or call 7-2805 from your stateroom phone for more information about our interactive group presentation.

NASSAU SHOPPING ASHORE INFORMATION

8:00 a.m. to 9:30 a.m. Port and Shopping Desk, Deck 4, Midship. This is your last chance to see Kaitland! Make sure to stop by and see Kaitland to collect your free savings ashore kit and VIP cards before going ashore.



SENSES
Spa & Salon

PAMPER PACKAGE

50 minute full body Swedish massage, foot and ankle massage, Indian scalp massage and 25 minute facial.
75 minute pamper for \$149.

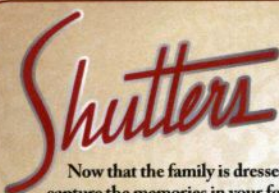
Senses Spa, Deck 11, Forward, Ext 7-1465

GUCCI JEWELRY AND WATCHES

Share in the magic and wonder of the Disney Dream with a fantastic accessory from Gucci. Discover rings, bracelets, necklaces, and earrings in many designs to match your style. Make a perfect his and hers match with watches for both men and women. This collection is highlighted by its 18k gold and sterling silver pieces. Experience the chic set we have onboard and take home a memory as good as gold.

WHITECAPS

Deck 3, Forward



FORMAL PORTRAITS TONIGHT!

Now that the family is dressed up and ready to enjoy the evening, capture the memories in your formal attire by visiting our Professional Portrait studios located in the Lobby Atrium, Deck 3, Midship.

5:15 p.m. - 6:00 p.m.

7:15 p.m. - 8:30 p.m.

9:30 p.m. - 10:15 p.m.

**Please note that photos are available for viewing on our interactive photo kiosks approximately five hours after being taken and are only available for purchase during this cruise.*

ONBOARD AIRLINE CHECK IN

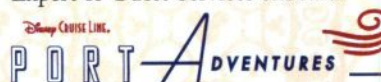
If you would like to have your boarding passes printed for you onboard and have your luggage taken to the airport for you, today at 8:00 p.m. is the last chance to enroll. If you have Disney Cruise Line® airport transfer to Orlando International Airport and fly with one of the participating airlines. Please stop at Guest Services Desk, Deck 3, Midship.

FINE DINING RESERVATIONS

Treat yourself to the ultimate culinary experience at sea. At Remy and Palo the enchantment of sea meets with elegance for a once-in-a-lifetime dining experience. Service/Cover charges will apply, please call 7-9734 for reservations to secure the last available spots.

Connect@Sea

We are now offering a NEW and improved Internet service to stay connected on your cruise like no other in the industry! Internet packages range from \$0.09 per MB - \$29.00 (1000 MB package) limited time promotional offer. For more information contact your Connect@Sea Expert or Guest Services onboard.



Welcome to Nassau, capital of the Bahamas. It is not too late to book an amazing adventure to Blue Lagoon Island, Atlantis, or you could book a snorkeling adventure. And don't forget, we will be arriving to Disney's Castaway Cay tomorrow, so plan ahead to ensure your first choice of adventure is available. Also, ask our team about the exclusive Getaway Packages, available onboard only.

All Port Adventures meet onboard the ship in Nassau.

Please check your tour tickets for meeting times and locations.

SHOPPING

THOMAS KINKADE: HIDDEN CHARACTER CHALLENGE!

Known as the "Painter of Light," Thomas Kinkade is one Disney's most celebrated artists having created an array of enchanting artwork. Stop by the Vista Gallery today to view his unique collection of paintings featuring some of your favorite Disney characters! Also, take the time to try and find all of the hidden Disney characters scattered throughout his paintings. Are you up to the challenge? Deck 4, Midship.

VERA BRADLEY BAGS AND ACCESSORIES

With their distinctive and colorful fabrics and trims, view our collection of Vera Bradley bags and accessories including the new Vera Bradley tote bags designed especially for Disney Cruise Line® available at White Caps, Deck 3, Forward.

BRIGHT NEW DISNEY CRUISE LINE FASHIONS

Brighten up your closet when you stop by Sea Treasures and pick up one of the colorful Disney Cruise Line® branded tops. These stylish pieces feature some of your favorite characters and make great souvenirs from your cruise! Deck 3, Forward.

TAG HEUER TIMEPIECES

With 150 years of history behind it and a name that spells cutting edge, each TAG Heuer watch is built with perfection. Proudly worn all over the world and available here on the Disney Dream, we have many styles for you to experience. White Caps, Deck 3, Forward.

HAIR BRAIDING ONBOARD

Add some flair to your hair when you visit a Disney Cruise Line® hair braiding station! Stop by a station today for more information and to learn all about the available braiding styles. Subject to restrictions and availability. Deck 11, Midship.

Due to port regulations, when the ship is docked, the stores will remain closed.

IMPORTANT INFORMATION

Security Notice

All Guests (including children) who wish to disembark the ship are required to present their Key to the World card at the gangway. A photo ID is also required for those Guests who are 18 years of age or older. Guests under the age of 18 are required to have a parent, guardian or other responsible adult sign an authorization form at the Guest Service Desk if they wish to go ashore unaccompanied or with any adult from another stateroom.

Sunscreen/Insect Repellent Advisory

Use sunscreen first and protect against mosquito borne illnesses by applying insect repellent on top of sunscreen when going ashore.

Cold and Flu Reminder

Please wash hands frequently and thoroughly, particularly before meals. Contact the Health Center by dialing 7-1923, should anyone in your party become ill.

Corridor Quiet Hours

As a courtesy to all our Guests, please recognize quiet hallway hours from 10:00 p.m. - 8:00 a.m.

Inclement Weather

For the safety of all Guests, outdoor events may be changed due to unforeseen weather conditions.

Environmental Message

With Disney's commitment to the environment, please refrain from throwing anything over the ship's side. Thank you!

No Reserved Seats Policy

As a courtesy to all our Guests, we kindly advise that the saving of seats is not permitted in the Walt Disney Theatre, and the saving of the sun loungers is not permitted on Deck 11, 12 and 13. Items left unattended will be returned to lost and found at Guest Services, Deck 3, Midship.

Smoking

For the comfort of our guests the following areas are designated as Smoking areas:

- Deck 13, Forward, port side, by "Currents"
- Deck 12, Aft, port side outdoor area that is accessible through the Meridian Lounge
- Deck 4, Aft, port side from 6:00 p.m. to 6:00 a.m. only (all of Deck 4 is no smoking from 6:00 a.m. to 6:00 p.m.)

-Smoking is prohibited inside all Guest staterooms and on stateroom verandahs. Guests found smoking in their staterooms or on their verandahs will be charged a \$250 stateroom recovery fee. Electronic cigarettes may only be used in designated smoking areas.

Walt Disney Theatre

Theatrical performances may use artificial fog, strobe lights, pyrotechnics and other special effects. For the safety of our performers and the comfort of those around you, the use of any photography, video recording devices or any electronic equipment is prohibited.

Verandah Safety

Please do not leave any combustible materials on your balcony when not present in your stateroom for safety reasons.

Morning	8:30	8:45	9:00	9:15	9:30	9:45	10:00	10:15	10:30	10:45	11:00	11:15	11:30	11:45	12:00	12:15	12:30	12:45	1:00	1:15	1:30				
FUNNEL VISION	Snow White (G) Funnel Vision							The Emperor's New Groove (G) Funnel Vision							Hercules (G) Funnel Vision										
BUENA VISTA THEATRE																Frozen: Sing-A-Long (PG) Duration: 1 Hour 48 Minutes									
CHARACTERS	Princess Gathering Lobby Atrium				Tinker Bell Lobby Atrium (V)																				
	Princess Minnie Dk 4, Balcony																								
FUN FOR ALL AGES	Last Minute Shopping Advice Port & Shopping Desk <8:00 a.m.				🎮 Open House Mickey's Puzzle Playtime Disney's Oceaneer Club				🎮 Open House Magic PlayFloor Disney's Oceaneer Club				Making of the Dream Evolution				Disney Cruise Line Trivia 687 Pub								
	🎮 Open House It's A Small World Nursery <Starts at 8:00 a.m.				🎮 Youth Activities Open House Edge				🎮 Youth Activities Open House Vibe				Family Crafts D Lounge												
ADULTS	Friends of Bill W. < 8:00 a.m. Outlook		Wake Up & Stretch Class Senses Fitness Center				Group Cycling Senses Fitness Center								Sports Trivia 687 Pub										
			Acupuncture Seminar Senses Fitness Center		Please refer to your Port Adventures tickets for meeting times and locations.										Xbox® Challenge 687 Pub				MLB: St. Louis vs. Boston 687 Pub (Subject to Satellite Availability)						
VIBE 14-17 YEARS OLD								🎮 Youth Activities Open House				Open for Teens								Ping Pong					
EDGE 11-14 YEARS OLD								🎮 Youth Activities Open House				Animation Creations				Wii Challenge				Shuffleboard					
OCEANEER LAB 3-12 YEARS OLD								🧸 Animation Antics				🧸 Wacky Relays				🧸 Piston Cup Challenge				Lunch 🧸 Stitch's Adventure Squad					
OCEANEER CLUB 3-12 YEARS OLD								🎮 Youth Activities Open House				🧸 Big Top Fun Fest!													
								🎮 Mickey's Puzzle Playtime				🎮 Magic PlayFloor								🧸 Journey to Neverland					

Afternoon	1:45	2:00	2:15	2:30	2:45	3:00	3:15	3:30	3:45	4:00	4:15	4:30	4:45	5:00	5:15	5:30	5:45	6:00	6:15	6:30	6:45						
FUNNEL VISION	Aladdin (G) Funnel Vision							Jam Fest at Sea Funnel Vision				Pixar Short Films (G) Funnel Vision				The Little Mermaid (G) Funnel Vision											
BUENA VISTA THEATRE											Bingo Pre Sales		\$5,000 Mega Jackpot Bingo				Frozen (PG) DOLBY 3D Duration: 1 Hour 48 Minutes										
CHARACTERS								Disney Friends Lobby Atrium				Belle Lobby Atrium (V)				Mickey Mouse Dk 4, Balcony		Daisy Preludes				Goofy Dk 4, Balcony					
								Rapunzel Dk 4, Balcony								Minnie Mouse Lobby Atrium (H)						Donald Preludes					
FUN FOR ALL AGES	Chip-It Golf (12+) Lobby Atrium		ANIMATION Creating a Character D Lounge		Pictionary Challenge D Lounge		JUMPSUITS Deck Stage		Bingo Pre Sales		\$5,000 Mega Jackpot BINGO Buena Vista Theatre				Live Music with Rob Sanders District Lounge		VILLAINS TONIGHT Walt Disney Theatre		Family Crafts D Lounge								
					Steel Drums with Rylon Rhoden Quiet Cove		Super Sloppy Science Disney's Oceaneer Lab		Disney Vacation Club Group Preview D Lounge		Kinwah Duo Live Lobby Atrium		Family Crafts D Lounge														
ADULTS	Making of the Dream Evolution				Art of The Theme Show Tour Meridian				Mixology (21+) Skyline				Rylon Rhoden LIVE Quiet Cove				Singles' Mingle Pink										
	How to Increase Your Metabolism Senses Fitness Center				Club 18*21 - Mini Golf Goofy's Sports Deck				Sports Trivia 687 Pub				Martini Tasting (21+) Meridian				Yoga Senses Fitness Center										
VIBE 14-17 YEARS OLD	Ice Cream Social								Mini Golf								Crowning of the Couch Potato				Open House						
EDGE 11-14 YEARS OLD					Animation Antics				Crowning of the Couch Potato				Mini Golf								Create a Postcard						
OCEANEER LAB 3-12 YEARS OLD	🧸 Get the Hook				🧸 Magic PlayFloor				🎮 Youth Activities Open House								🧸 Mirror, Mirror		🧸 Anyone Can Cook								
OCEANEER CLUB 3-12 YEARS OLD					🧸 Aloha Luau				🧸 Cruisin' with Crush				🧸 Toy Story Boot Camp				Dinner				🧸 Little Einstein's Adventure						

Evening	7:00	7:15	7:30	7:45	8:00	8:15	8:30	8:45	9:00	9:15	9:30	9:45	10:00	10:15	10:30	10:45	11:00	11:15	11:30	11:45	12:00									
FUNNEL VISION	The Hunchback of Notre Dame (G) Funnel Vision							Up (PG) Funnel Vision							Lilo & Stitch (PG) Funnel Vision															
BUENA VISTA THEATRE											Frozen (PG) DOLBY 3D Duration: 1 Hour 48 Minutes				Saving Mr. Banks (PG-13) Duration: 2 Hours 5 Minutes															
CHARACTERS	Minnie Mouse Lobby Atrium (H)		Ariel Lobby Atrium (V)						Princess Tiana Lobby Atrium (V)		Goofy Preludes																			
	Snow White Lobby Atrium (V)		Daisy Preludes		Donald Preludes						Mickey Mouse Dk 4, Balcony		Rapunzel Lobby Atrium (V)																	
FUN FOR ALL AGES	Bingo Pre Sales		Senses Spa BINGO D Lounge		VILLAINS TONIGHT Walt Disney Theatre				MIRROR MIRROR D Lounge		JUMPSUITS D Lounge		Club D Dance Party D Lounge																	
			So You Think You Know Your Family? Evolution		Family Crafts D Lounge						Steel Drums with Rylon Rhoden Deck 12, Forward		Live Music with Rob Sanders Lobby Atrium																	
ADULTS	Pub Quiz 687 Pub		NBA: Oklahoma vs. Chicago 687 Pub (Subject to Satellite Availability)								St. Paddy's Celebration 687 Pub		REWIND Evolution							Club DJ Akshen										
			Live Music with The Get Ups District Lounge				Live Music with Rob Sanders District Lounge		Cruise Staff DJ Evolution		Club 18*21 - Mixer Evolution		Match Your Mate Evolution																	
VIBE 14-17 YEARS OLD	🎮 Youth Activities Open House				Teen AquaDuck				Pump It Up				Magic Show				Ghost Voyagers													
EDGE 11-14 YEARS OLD	Anyone Can Cook				Tween AquaDuck				GAGA Ball				That's Hilarious				Gender Wars				Pajamarama Movie Night									
OCEANEER LAB 3-12 YEARS OLD	🧸 Magic Show								🧸 Super Sloppy Science				🧸 Animation Antics				🧸 GAGA Ball		🧸 Magic PlayFloor											
OCEANEER CLUB 3-12 YEARS OLD	🧸 Once Upon a Time								🧸 Magic PlayFloor								🧸 Camp Rocking Out!				🎮 Youth Activities Open House									

Symbol for activities that will be repeated during the cruise



FOLD

Fold along the dotted lines and take me with you so you don't miss any of the fun!

FOLD

IN THE SPOTLIGHT SERIES
SOLVE IT! SERIES
JUMP UP! SERIES
CREATE & INVENT SERIES
OPEN HOUSE

CLUBHOUSE SERIES
STORYBOOK SERIES

MONDAY, MARCH 17, 2014 - NASSAU, BAHAMAS

BUENA VISTA THEATRE

Deck 4 & 5, Midship

DOLBY 3D



11:30 a.m.

Duration: 1 hr 48 mins
Rating: PG



5:45 p.m. & 8:15 p.m.

Duration: 1 hr 48 mins
Rating: PG



11:00 p.m.

Duration: 2 hrs 5 mins
Rating: PG-13

Character Appearances

PRINCESS GATHERING
Lobby Atrium - 9:00 a.m.

PRINCESS MINNIE
Deck 4, Balcony - 9:15 a.m.

TINKER BELL
Lobby Atrium (V) - 9:30 a.m.

DISNEY FRIENDS
Lobby Atrium - 3:30 p.m.

RAPUNZEL
Deck 4, Balcony - 3:45 p.m.

LOBBY ATRIUM (V)
10:00 p.m.

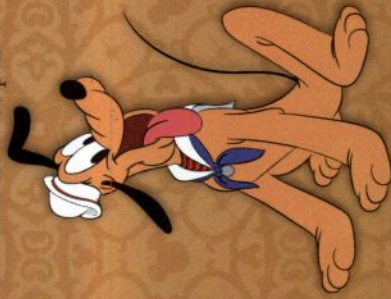
BELLE
Lobby Atrium (V) - 4:30 p.m.

MICKEY MOUSE
Deck 4, Balcony
5:00 p.m., 7:15 p.m.
& 9:30 p.m.

MINNIE MOUSE
Lobby Atrium (H)
5:00 p.m., 7:15 p.m.
& 9:30 p.m.

CINDERELLA
Lobby Atrium (V)
5:15 p.m.

DAISY DUCK
Preludes
5:30 p.m. & 7:30 p.m.



(H) Hallway - (S) Starboard Side - (P) Port Side - (V) Vestibule
For details of daily Disney character appearances, refer to the character line on your Navigator Grid, or the digital character board in the Lobby Atrium.

YOUTH ACTIVITIES THEMED EXPERIENCES

CLUBHOUSE SERIES
focuses on movement and features content which appeals to younger children.

STORYBOOK SERIES
is designed with a strong connection to the Disney classic stories.

JUMP UP! SERIES
includes large group games & movement-oriented activities.

CREATE & INVENT SERIES
will have a tactile focus allowing children to create and admire their work.

IN THE SPOTLIGHT SERIES
focuses on children's stage presence with lots of activities and enthusiasm.

SOLVE IT! SERIES
are less active, but will challenge children with problem/solutions-based activities.

OPEN HOUSE
activities for families, adults and children of all ages to enjoy together.

SHIP DIRECTORY

YOUTH ACTIVITIES

DISNEY'S OCEANEER CLUB DECK 5, MID 11:30 AM - 12:00 MID
DISNEY'S OCEANEER LAB DECK 5, MID 9:00 AM - 1:00 AM
EDGE DECK 13, MID 10:00 AM - 1:00 AM
VIBE DECK 4, FWD 11:00 AM - 2:00 AM
IT'S A SMALL WORLD NURSERY DECK 5, MID 9:00 AM - 12:00 MID

POOLS & MORE

* Children under 12 must have adult supervision in pool areas.

AQUADUCK DECK 12, AFT 9:00 AM - 11:00 PM
DONALD'S POOL DECK 11, MID 9:00 AM - 6:00 PM
8:00 PM - 10:00 PM
MICKEY'S POOL DECK 11, MID 6:00 AM - 12:00 MID
MICKEY'S SLIDE DECK 11, MID 9:00 AM - 6:00 PM
NEMO'S REEF DECK 11, MID 9:00 AM - 6:00 PM
QUIET COVE POOL (18+) DECK 11, FWD 6:00 AM - 12:00 MID

RECREATION

GOLF/SPORTS SIMULATORS DECK 13, AFT 11:00 AM - 6:00 PM
GOOFY GOLF DECK 13, AFT 8:00 AM - 10:00 PM
GOOFY'S SPORTS DECK DECK 13, AFT 1:00 AM - 6:00 PM
MIDSHIP DETECTIVE AGENCY DECK 5, MID 8:00 AM - 11:00 PM
PORT ADVENTURES DESK DECK 5, MID 8:00 AM - 12:00 PM
7:00 PM - 8:30 PM
SENSES FITNESS CENTER (18+) DECK 11, FWD 6:00 AM - 10:00 PM

GENERAL INFORMATION

ARR-CADE DECK 11, AFT 24 HOURS
BUENA VISTA THEATRE DECK 4 & 5, MID SHOWTIMES
DISNEY VACATION CLUB DECK 4, MID 9:00 AM - 11:00 AM
5:30 PM - 10:00 PM
GUEST SERVICES DECK 3, MID 24 HOURS
HAIRBRAIDING DECK 11, MID 8:00 AM - 10:00 PM
MEDICAL HEALTH CENTER DECK 1, FWD 9:30 AM - 11:00 AM
4:30 PM - 7:00 PM
ONBOARD SALES DESK DECK 4, MID 8:30 AM - 10:00 AM
3:00 PM - 10:00 PM
PORT & SHOPPING DESK DECK 4, MID 8:00 AM - 9:30 AM
PRELUDES DECK 3, FWD 5:45 PM - 6:30 PM
8:00 PM - 8:45 PM
SENSES SPA AND SALON DECK 11, FWD 8:00 AM - 10:00 PM
SHUTTERS PHOTO GALLERY DECK 4, MID 5:00 PM - 11:00 PM
WALT DISNEY THEATRE DECK 3 & 4, FWD SHOWTIMES

SHOPPING

MICKEY'S MAINSAIL DECK 3, FWD 6:30 PM - 11:00 PM
SEA TREASURES DECK 3, FWD 6:30 PM - 11:00 PM
QUACKS DECK 11, MID
VISTA GALLERY DECK 4, MID 6:30 PM - 11:00 PM
WHITE CAPS DECK 3, FWD 6:30 PM - 11:00 PM
WHOZITS & WHATZITS DECK 11, MID 7:00 PM - 10:00 PM

DUE TO PORT REGULATIONS, WHEN THE SHIP IS DOCKED, THE STORES MUST REMAIN CLOSED.

DINNER MENU
Animator's Palette: Pacific Rim Cuisine (Alcoholic)
Green Flash (Alcoholic)
OF THE DAY
Virgin Mojito (Non Alcoholic)
Royal Palace: French Dinner
Dining Times 5:45 p.m. & 8:15 p.m.
WEATHER FORECAST
Today: Partly Cloudy
High: 76°F/24°C
Tomorrow: Partly Cloudy
High: 76°F/24°C

Evening Attire: Optional Dress Up

DINING & LOUNGES

Breakfast

CABANAS CONTINENTAL DECK 11, AFT 7:00 AM - 7:30 AM
CABANAS DECK 11, AFT 7:30 AM - 10:30 AM
ENCHANTED GARDEN DECK 2, MID 8:30 AM - 10:30 AM
ROYAL PALACE DECK 3, MID 8:00 AM - 9:30 AM

LUNCH

CABANAS DECK 11, AFT 12:00 PM - 2:00 PM
CABANAS - PIZZA DECK 11, AFT 2:00 PM - 4:00 PM
FILLMORE'S FAVORITES DECK 11, MID 10:30 AM - 6:00 PM
LUGI'S PIZZA DECK 11, MID 10:30 AM - 6:00 PM
ROYAL PALACE DECK 3, MID 12:00 PM - 1:30 PM
TOW MATER'S GRILL DECK 11, MID 10:30 AM - 6:00 PM

DINNER

ANIMATOR'S PALATE DECK 3, AFT 5:45 PM & 8:15 PM
CABANAS TABLE SERVICE DECK 11, AFT 6:30 PM - 8:30 PM
ENCHANTED GARDEN DECK 2, MID 5:45 PM & 8:15 PM
ROYAL PALACE DECK 3, MID 5:45 PM & 8:15 PM
PALO & REMY DECK 12, AFT 6:00 PM - 9:00 PM
(RESERVATIONS REQUIRED & COVER CHARGE APPLICABLE, DAI#7-9734)
TOW MATER'S GRILL DECK 11, MID 6:00 PM - 11:00 PM

LATE NIGHT SNACKS

LUGI'S PIZZA DECK 11, MID 9:30 PM - 12:30 AM
THE DISTRICT DECK 4, AFT 10:45 PM - 11:45 PM

ADDED FEATURES

BEVERAGE STATION DECK 11, MID 24 HOURS
EYE SCREAM DECK 11, MID 11:00 AM - 12:30 AM
ROOM SERVICE DIAL 0 24 HOURS

ENTERTAINMENT - LOUNGES - BARS

Adults must be 21 and older to consume alcoholic beverages.

687 PUB (18+ After 9:00 PM) DECK 4, AFT 6:30 PM - 12:00 MID
BON VOYAGE DECK 3, MID 9:00 AM - 11:00 PM
COVE BAR (18+) DECK 11, FWD 10:30 AM - 11:00 PM
COVE CAFE (18+) DECK 11, FWD 7:00 AM - 12:00 MID
CURRENTS (18+) DECK 13, FWD 11:00 AM - 12:00 MID
D LOUNGE DECK 4, MID SHOWTIMES
DISTRICT LOUNGE (18+ After 9:00 PM) DECK 4, AFT 4:00 PM - 12:00 MID
EVOLUTION (18+) DECK 4, AFT 9:30 PM - 2:00 AM
FROZONE TREATS DECK 11, MID 11:00 AM - 11:00 PM
MERIDIAN (18+) DECK 12, AFT 5:00 PM - 12:00 MID
OUTLOOK DECK 14, MID
PINK (18+) DECK 4, AFT 5:30 PM - 12:00 MID
SKYLINE (18+) DECK 4, AFT 5:00 PM - 12:00 MID
VISTA CAFE DECK 4, MID 7:30 AM - 11:00 PM
WAVES DECK 12, AFT 12:00 PM - 7:00 PM

Consumers who order raw or partially cooked, ready-to-eat food of animal origin, are hereby informed that the food is not sufficiently cooked to ensure its safety.

All Ashore: Approx. 9:30 a.m.

All Aboard: 5:45 p.m.

SHIP'S AGENT IN NASSAU

Nassau, Bahamas

R.H. Curry & Company, 303 Shirley St.,

P.O. Box N8168 Nassau, Bahamas

242-323-8425 or 242-357-9218

IMPORTANT NUMBERS

Fire/Security: 7-3001

Medical Emergency: 7-3000

Health Center: 7-1923