

TORTOLA SHOPPING MAP

SHOPPING ASHORE

EXCLUSIVE WATCH AND JEWELRY BRANDS

Bulova

Colombian Emeralds International

Marahlago Larimar

Colombian Emeralds International

Philip Stein

Colombian Emeralds International

Raymond Weil

Colombian Emeralds International

Rolex

A.H. Riise Rolex Boutique

AT A GLANCE

Capital:

Road Town

Location:

60 miles east of Puerto Rico,
22 miles east of St. Thomas

Language:

English

Currency:

U.S. Dollar

Banking:

Banks are open from 9am to 2:30pm,
Monday through Friday, and from
4:30pm to 6pm on Fridays.

Transportation:

Taxis are available

COLOMBIAN EMERALDS INTERNATIONAL STORE# 1

9AM-11AM

Join Aimee at Colombian Emeralds International and shop one of the Caribbean's best-loved and most reliable retailers with over 40 years of experience. You will find a host of beautiful Emeralds and designer watches. This is a "not-to-be-missed" store to visit while in Tortola!

CHECK YOUR PERSONAL NAVIGATOR FOR EVENT TIMES AND DETAILS.

DON'T FORGET YOUR

- ✓ Photo ID & Key to the World Card
- ✓ Cash and/or Credit Cards

Docking/Anchorage:

If the ship drops anchor, you will be transported ashore by tender. If the ship docks, downtown is located a short distance away from the pier.

Port Adventures:

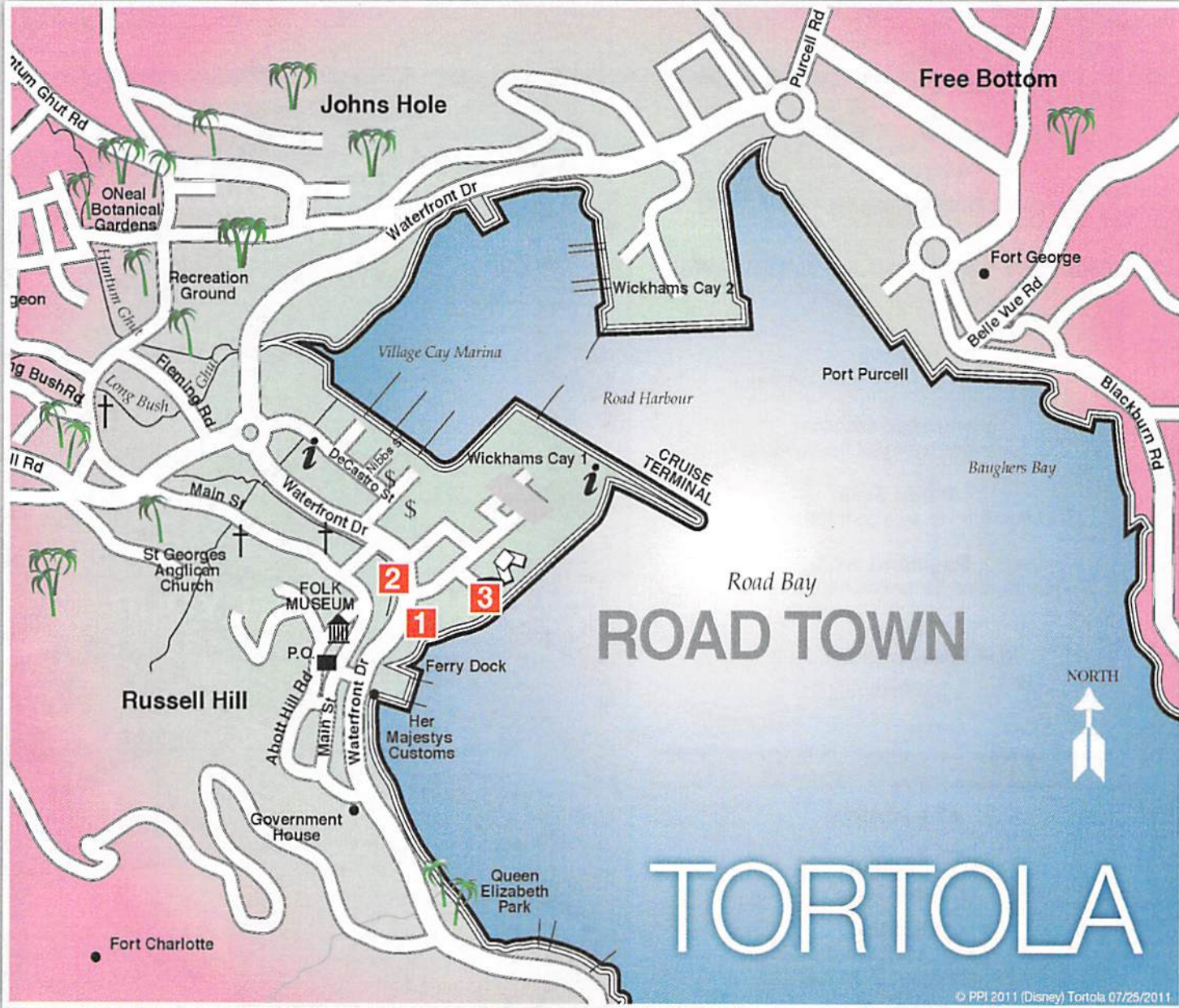
Check your ticket for the correct meeting time and location for your tour. Your Port Adventures Team will direct you to transportation.

In Case of Emergency:

Island Shipping & Trading Co. Ltd.
Pasea Trading Estate,
P.O. Box 61
Road Town, Tortola
British Virgin Islands
Tel: (284) 494-2268

*Watch Channel
223 For More
Information!*

PORT SHOPPING MAP





An Overview of Tortola

In 1775, the economy started to decline with the American Revolution. Though the Napoleonic Wars brought warships to Road Harbor, the decline accelerated because of a drought and a hurricane. With the freeing of the islands' 5,133 slaves in 1834, and a cholera epidemic in 1853, plantations were abandoned and the islands reverted to bush.

The island grew and established banks, schools and hospitals from 1871 to 1956, while the islands were part of the federation of the Leeward Islands. The British Virgin Islands became a separate colony in 1956, and in 1967, a new constitution gave the islands a ministerial system of government. They are now largely self-governing with offshore banking as the number one industry followed by tourism.

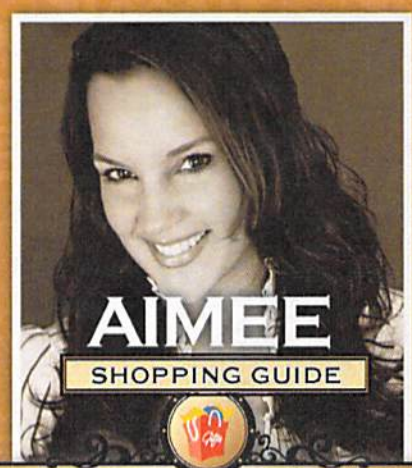
In addition to Tortola (10 square miles), there are more than 50 other islands, rocks and crags in the BVI chain. Most of the islands are fairly small and still uninhabited. The Virgin Gorda Highlights tour provides time to enjoy popular Baths National Park with its unusual rock formations. The Best of Tortola tour affords panoramic views of Peter Island, St. John and St. Thomas.

Road Town retains character with pastel colored buildings. Residents like to boast that the tallest objects on any of the islands are coconut trees. Territorial law prohibits buildings more than two stories.

The BVI Tourist Board has three locations—at the pier, in the center of town, and at the Ferry Dock.

Tortola's population is about 16,000, and most live in Road Town. Main commerce is banking, insurance, tourism and some light industry. The airport is too small for large jets so the tourism tide is held back. British Virgin Islanders are friendly and helpful people, and are among the easiest going people in the Caribbean. With 32 public holidays, easy going is a way of life. Due to a strong economy, there is virtually no unemployment.

The Governor is appointed by the reigning British Monarch Queen Elizabeth II. Bathing suits are for the beach and are not considered appropriate dress for walking around town. Covering up is considered common courtesy while visiting areas other than the beach. As in Great Britain, driving is on the left, so when crossing the street, be sure to look both ways.



AIMEE

SHOPPING GUIDE

SHOPPING ASHORE



Shop with confidence at each of the recommended stores. All stores listed on the map have paid a promotional fee and given Disney Cruise Line guests a Buyer's Guarantee valid for 60 days after purchase. This guarantee is valid for repair or exchange. Please note the following conditions that apply to the guarantee: Guest negligence or buyer's regret is excluded. Only appraisals from independent, accredited graduate gemologists not affiliated with any retail jeweler will be considered. Price paid for merchandise or verbal claims or agreements between merchant and guest will not be grounds for returns. Electronics and watches requiring service must be returned by the consumer to the respective manufacturer. All purchases, including fragile items, must be checked before leaving the store. Do not mail merchandise without prior authorization. Guests are responsible for postage and appraisal costs. The PPI Group, 4517 NW 31st Avenue Ft. Lauderdale, FL 33309-3403, Customer Service: 1.888.774.4768 or 954.377.7777, email: Service@ppigroup.com.