



SHOPPING ASHORE

At A Glance

Capital:
Madeira

Location:
Southeast off the coast
of Portugal

Population:
100,847

Language:
Portuguese

Currency:
Euro

Banking:
Banco Tolla and Azores located in the
harbor are open Monday
through Friday.

Post Office:
The nearest post office is Correos de
Portugal located at the harbor

Transportation:
Taxis are available from the pierside

Shopping Hours:
Shops are open: 9:00am - 1:00pm,
3:00pm - 7:00pm Monday through Friday
and 9:00am - 1:00pm on Saturdays.
The recommended shops will be open
all day when the ship is in port

Browse your Destination Guide
(found in your stateroom)
for more details.

GET YOUR EUROPEAN SHOPPING TIPS...

See your Shopping Guide Aimee for insider information on how to get around our upcoming ports of call and learn about the great shopping opportunities available!

Stop by Aimee's shopping guide desk on Deck 3, mid ship, beside the Port Adventure desk. Learn how to navigate yourself through town and where to find the best buys in each port. Don't miss Aimee's Port & Shopping Show!

*Watch Channel
223 for more
information!*

CHECK YOUR PERSONAL NAVIGATOR FOR EVENT TIMES AND DETAILS.

DON'T FORGET YOUR

- ✓ Photo ID & Key to the World Card
- ✓ Cash and/or Credit Cards

Docking/Anchorage:

The ship docks at the
South Quay 3 in Funchal.

Port Adventures:

Check your ticket for the
correct meeting time and
location for your tour.
Your Port Adventures Team
will direct you to transportation.

In Case of Emergency:

Port Agent:
Agencia de Viagens Blandy
Contact: Chris Blandy
Phone: 011 351 291 200600



SEE YOUR SHOPPING GUIDE FOR MORE INFORMATION!

PORT SHOPPING MAP



All Ashore

LOOK FOR THE ALL ASHORE LOGO FOR YOUR RECOMMENDED AND GUARANTEED STORES!



VAT REFUND PROGRAM Value Added Tax (VAT) is a tax refund program in which non-European citizens may be entitled to reclaim a portion or all of the tax paid for items purchased in participating stores. Each store's participation in the VAT refund program is discretionary. In most cases, VAT is already added to the purchase price. Please note that regulations and conditions governing the refund of VAT are subject to change. It is the responsibility of the cruise ship guest to inquire about a store's VAT refund program participation and if their purchase qualifies. For information about participating stores listed on this map, please see your Shopping Guide.



Lined writing area for notes or comments.

1a BORDAL-BORDADOS DA MADEIRA, LDA
1b Travel Through the World of Embroideries

- Handmade embroidery from one of the oldest producers in Maderia
- Madeira Embroidery has been created here since 1963
- The best linen and cotton fabrics transformed into exquisite pieces
- Tablecloths, bed linens, infant and toddler linens, placemats, and runners
- You can view the embroidery demonstrations daily
- Also available: tapestries and a selection of Madeira wines
- An innovative company faithful to handmade traditions
- Two locations: 1a, factory at Rua dr. Fernao de Ornelas 77
- Second location at 1c Avenida do Infante 26
- Show this map for discount of 10% cash and 5% credit card purchase

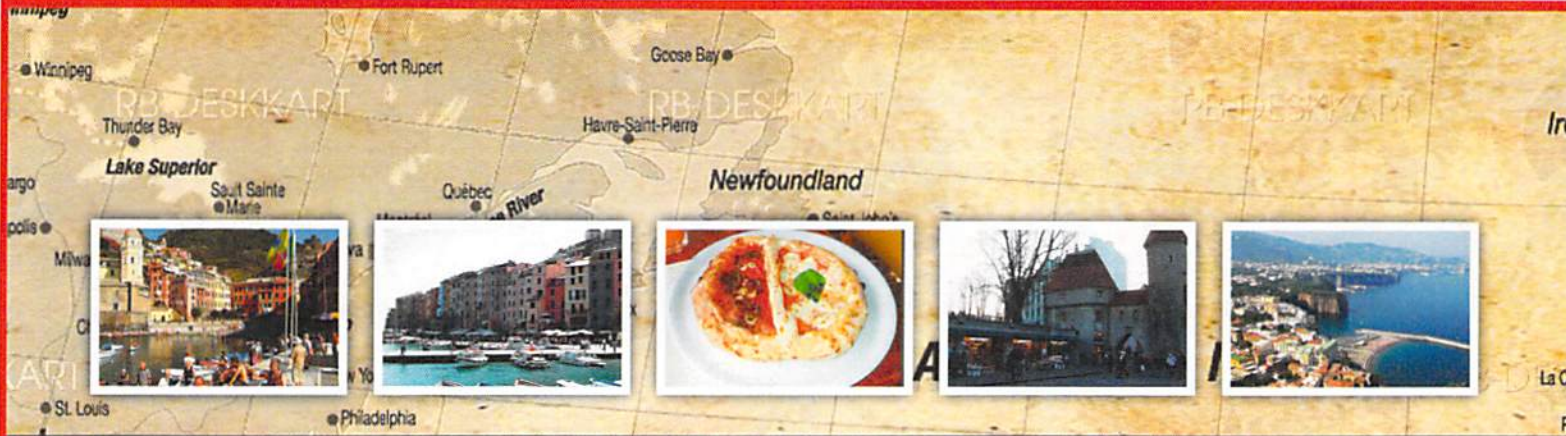
BORDAL-BORDADOS DA MADEIRA, LDA

Discount Coupon

10% OFF CASH PURCHASES
5% OFF CREDIT CARD PURCHASES

Handmade embroidery and linen





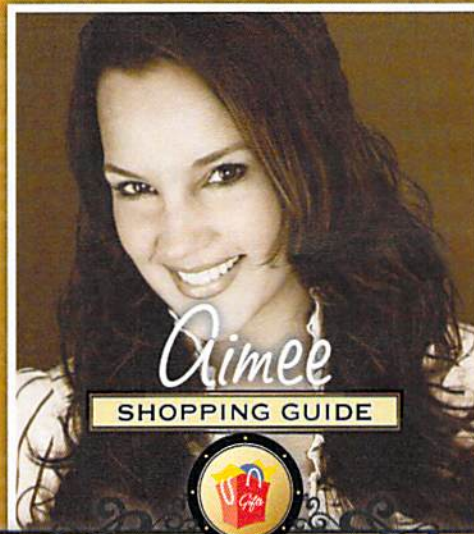
An Overview of Funchal

It is eternally spring on this small, peaceful, volcanic island of Madeira set in the Atlantic Ocean. Soaring cliffs, clear blue water, stunning mountains and deep canyons, beautiful flowers and vast vineyards beckon. Prince Henry the Navigator discovered the island in the 1400's. He was so enchanted with the island that he returned with Cretan and Cyprus grapevines and Sicilian sugar cane, setting Madeira on its future path as a source of fine wine. Merchants and sailors discovered this delightfully temperate crossroads in the ocean too, stopping to rest and trade on their journeys between Africa, India and Europe. Stroll along Funchal's elegant and bustling seafront promenade. Visit a delightful market and view ornate 16th and 17th century buildings and churches lining the capital's streets and alleys. These islands are noted as the source of Madeira wine. The islands are also known by the flowers and sub-tropical fruits. Most of the early settlers were from the Portuguese regions of the Algarve and Minho. The islands have historical monuments, streets and plazas (praças) with many gardens and typical small towns. Madeira is known for its beautiful rolling green mountains, and the most breath taking display of flowers.

Orchids and birds of paradise rarely seen outside of Hawaii and Pacific Islands.

There are beautiful gardens everywhere. For the first time in Portugal, the Gold award in the 2000 competition for the Greening and Flowering of Towns and villages was presented to the city of Funchal. This award was sought after by hundreds of cities in Europe. It was also awarded as the cleanest city in Portugal.

MADEIRA



SHOPPING ASHORE

© PPI 2011 DSM Funchal 05/12/2011



Shop with confidence at each of the recommended stores. All stores listed on the map have paid a promotional fee and given Disney Cruise Line guests a Buyer's Guarantee valid for 60 days after purchase. This guarantee is valid for repair or exchange. Please note the following conditions that apply to the guarantee: Guest negligence or buyer's regret is excluded. Only appraisals from independent, accredited graduate gemologists not affiliated with any retail jeweler will be considered. Price paid for merchandise or verbal claims or agreements between merchant and guest will not be grounds for returns. Electronics and watches requiring service must be returned by the consumer to the respective manufacturer. All purchases, including fragile items, must be checked before leaving the store. Do not mail merchandise without prior authorization. Guests are responsible for postage and appraisal costs. The PPI Group, 4517 NW 31st Avenue Ft. Lauderdale, FL 33309-3403, Customer Service: 1.888.774.4768 or 954.377.7777, email: Service@ppigroup.com European guests may contact: rcentofanti@ppigroup.com, +39 338 8687581.