

# PERSONAL NAVIGATOR

TUESDAY, FEBRUARY 11, 2014

Sunrise: 6:46 a.m. Sunset: 6:01 p.m.  
Evening Attire: Optional Dress Up  
All Ashore: 9:30 a.m.  
All Aboard: 5:45 p.m.

Tuesday: Sunny High: 76°F/24°C  
Wednesday: Partly Sunny High: 78°F/26°C

NASSAU, BAHAMAS

## TWICE CHARMED

AN ORIGINAL TWIST ON THE CINDERELLA STORY

STEP BACK IN TIME TO EXPERIENCE THE STORY OF CINDERELLA IN A MAGICAL NEW WAY. ENJOY THIS MAGNIFICENT MUSICAL PRODUCTION WITH YOUR FAVORITE CHARACTERS - AND A FEW NEW ONES!


WALT DISNEY THEATRE

Deck 4, Forward

6:15 p.m. & 8:30 p.m.

As a courtesy to all Guests, we kindly advise that the saving of seats is **not** permitted in the Walt Disney Theatre.



 Assistance available at the entrance to the Walt Disney Theatre 30 minutes prior to show time.



## Nassau Port Information

While you will find many great experiences in Nassau, there have been reports of increased crime, including assaults and robberies involving tourists in the area. As in any large city, you'll want to take some basic precautions to make the most of your time ashore.

- Be aware of your surroundings at all times, just as you would in your normal daily activities.
- Avoid shortcuts, narrow alleys or poorly lit streets. We recommend that Guests only visit the downtown shopping areas and other tourist locations.
- Leave valuables in your room safe and avoid carrying large amounts of cash. Exercise caution when using ATMs. Cameras and handbags should be carried out of sight and secured to you with a strap.
- Leave passports, air transportation tickets and other travel documents in your room safe. When going ashore, each adult is required to carry a Driver's license, copy of passport or other government-issued photo ID.
- If travelling by taxi, use only licensed taxi operators.
- In general, use the same level of precaution you would use in any tourist destination.
- Most crimes are easier to commit in dark, unlit areas. You should stay out of these types of areas and consider returning to the ship before nightfall. If you stay out at night, please be extra vigilant about your personal safety.



### ADULT VARIETY

Featuring the  
Magic and Illusion of  
Scott Alexander, as he  
entertains you in this adult  
exclusive show.

Fathoms (18+),  
Deck 3, Forward,  
10:15 p.m.

## Don't Miss:

### Chip-It Golf (12+)

Lobby Atrium, Deck 3, Midship - 3:30 p.m.

It's par for the course for our Guests 12 and older to compete on our special "greens" in this fun tournament.

### Animation - Goofy

Promenade Lounge, Deck 3, Aft - 3:45 p.m.

Your Cruise Staff teach you how to draw one of your favorite Disney friends - Goofy.

### Who Wants to be a Mouseketeer?

D Lounge, Deck 4, Midship - 7:30 p.m. & 9:45 p.m.

Your chance to get in to the "hot seat" and win limited edition prizes. Or, play along as part of our live studio audience.

### Disco Legends

Fathoms, Deck 3, Forward - 10:45 p.m.

Put on your platform shoes and hit the dance floor as we catch a disco fever. Our '70s dance party will have you spinning like a disco ball.



Please check your tickets for meeting times and locations. Visit the Port Adventure's Desk, Deck 3, Midship for any questions.

## DINNER MENU

Animator's Palate: Show Dinner  
Carioca's: South American Dinner  
Lumi re's: French Dinner

## DRINK OF THE DAY

High Tide (Alcoholic)  
Espresso Chiller (Non Alcoholic)

### IMPORTANT NUMBERS

Fire/Security: 7-3001  
Medical Emergency: 7-3000  
Health Center: 7-1923

# FUN FOR ALL AGES HIGHLIGHTS

## FUN IN THE SUN

*Deck Stage, Deck 9, Midship - 12:15 p.m.*

Join your Cruise Staff for some fun and games in the sunshine!

## FAMILY CRAFTS: 3D CRAFTS

*Promenade Lounge, Deck 3, Aft - 1:00 p.m.*

Join your Cruise Staff and make some 3D crafts.

## PICTIONARY CHALLENGE

*Promenade Lounge, Deck 3, Aft - 1:45 p.m.*

Come have some fun with this classic game.



## CHIP-IT GOLF (12+)

*Lobby Atrium, Deck 3, Midship - 3:30 p.m.*

It's par for the course for our Guests 12 and older to compete on our special "greens" in this fun tournament.



## WHO WANTS TO BE A MOUSEKETEEER?

*D Lounge, Deck 4, Midship - 7:30 p.m. & 9:45 p.m.*

Your chance to get in to the "hot seat" and win limited edition prizes. Or, play along as part of our live studio audience.



## CLUB NEW YEAR'S EVE

*D Lounge, Deck 4, Midship - 10:30 p.m.*

"The party don't start, till you walk in." Club New Year's Eve, you won't want to miss this journey of musical genres in history and performances by some of your favorite Cruise Staff. Bring your family and help us count down to a brand new year!

## FAMILY SUPERSTAR KARAOKE

*D Lounge, Deck 4, Midship - 11:15 p.m.*

Join your Cruise Staff in D Lounge tonight and sing along to your favorite song - fun for everyone.

# ADULT ACTIVITY HIGHLIGHTS



## SENSES SPA FITNESS CLASSES & SEMINARS

*Sunrise Stretch - Senses Spa Fitness Center - 7:30 a.m.*

*Body Sculpt Boot Camp - Senses Spa Fitness Center - 8:00 a.m.*

*Detox for Health & Weight Loss - Senses Spa & Salon - 9:15 a.m.*

*Hair Seminar - Senses Spa & Salon - 11:00 a.m.*

*Arthritis and Back Pain Solutions - Senses Spa & Salon - 11:15 a.m.*

*Good Feet: Relieving Back Pain - Senses Spa & Salon - 3:00 p.m.*

*Group Cycling - Senses Spa Fitness Center - 4:00 p.m.*

*Secrets to a Flatter Stomach - Senses Spa & Salon - 5:00 p.m.*

## TASTING CLASSES

*Wine Tasting (21+) - Keys - 12:30 p.m.*

*Mixology (21+) - Keys - 2:30 p.m.*

Please make reservations for tastings at Guest Services for a nominal fee.

Tasting Seminars are only for Guests 21 and Older.

## CLUB 18\*21 - WII CHALLENGE

*O'Gills Pub, Deck 3, Forward - 5:00 p.m.*

Come to challenge your new friends playing this fun video game.



## CLUB 18\*21 - CHILLAX

*O'Gills Pub, Deck 3, Forward - 10:00 p.m.*

Time to Chillax at Club 18\*21! Join your fellow Club cruisers and enjoy great music, a smoothie bar and some fun interactive games.

## PUB QUIZ

*O'Gills Pub, Deck 3, Forward - 6:30 p.m. & 8:45 p.m.*

Join us as we test your knowledge against your fellow Guests at our Pub Quiz challenge.

## 70'S MUSIC TRIVIA

*O'Gills Pub, Deck 3, Forward - 7:30 p.m.*

Let's step back in time and visit Studio 54 as we test your 70's music knowledge.



# \$5,000 MEGA JACKPOT BINGO

**Fathoms, Deck 3, Forward**

**Card Sales - 4:15 p.m.**

**Game Starts - 4:30 p.m.**

Don't miss your chance to take home big money! 4 CASH prize games and great raffle prizes to be won! Complete the fourth game in 46 numbers or less and win the \$5,000 Mega Jackpot!

# SENSES SPA BINGO

**Fathoms, Deck 3, Forward**

**Card Sales - 7:15 p.m.**

**Game Starts - 7:30 p.m.**

Four CASH prizes to be won! Plus great spa prizes that will pamper you, including a mini facial and massages all courtesy of the Senses Spa and Salon. Serenity now!

# YOUTH ACTIVITIES HIGHLIGHTS

## DINE & PLAY

A convenience for families dining at 8:15 p.m., our Youth Activities Counselors will be available at 9:15 p.m. at the entrance of Lumière's, Carioca's and Animator's Palate dining rooms to bring registered children to join the fun in Disney's Oceaneer Club and Disney's Oceaneer Lab.



**Deck 5, Midship (7-1440)**  
(3-12 years old) 9:00 a.m. - 12:00 mid

### ALOHA LUAU

11:45 a.m.

It's party time, Hawaiian style! Come join us for a Luau experience and learn how to dance like Lilo & Stitch.

### ONCE UPON A TIME

4:30 p.m.

Join Beverly the Bookmaker for a magical, musical story time featuring a Disney Princess!



**Deck 5, Midship (7-1445)**  
(3-12 years old) 9:00 a.m. - 12:00 mid

### HATS OFF TO PETER PAN

2:00 p.m.

You'll believe you can fly. All it takes is faith, trust, and pixie dust and a special visit from Peter Pan! Rediscover the magic of Neverland!

### MAGIC SHOW

7:15 p.m.

The Magnificent Magician will demonstrate to you some of the best known magic tricks on the sea.



**Deck 2, Midship (7-5816)**  
(11-14 years old)

10:00 a.m. - 1:00 a.m.

### GENDER WARS

4:00 p.m.

Join us as we find out who really are the king or queen of the castle.

### THAT'S HILARIOUS

7:30 p.m.

Ever wanted to show off your comedy skills? Then be a part of the cast for the crazy improv show "That's Hilarious" and put on a live show for your friends.



**Deck 11, Midship (7-18517)**  
(14-17 years old) 12:00 p.m. - 2:00 a.m.

### SHIP FACTOR

4:00 p.m.

Ready for one of the toughest challenge competitions onboard?

### ESPN DREAM TEAM DRAFT DAY

6:00 p.m.

Join us and engage in this interactive fantasy sports draft unlike anything you've ever seen! Can YOU draft the greatest sports team of All-Time?

## YOUTH ACTIVITIES OPEN HOUSE

Open House is an opportunity for all to come and participate in a variety of exciting activities and free time in Disney's Oceaneer Club, Disney's Oceaneer Lab, Edge, Vibe, and It's a Small World Nursery throughout the cruise. During these times secured programming will still be offered in the other venues for those looking to check their children into care.

Vibe: 12:00 p.m. - 1:30 p.m.  
Edge: 10:00 a.m. - 12:00 p.m.

Disney's Oceaneer Lab: 3:00 p.m. - 5:00 p.m.  
Disney's Oceaneer Club: 9:00 a.m. - 11:30 a.m.

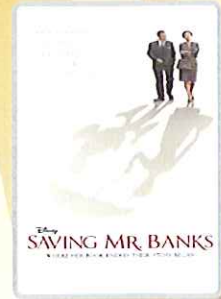
# BUENA VISTA THEATRE

Deck 5, Aft  
Today's Movies

DOLBY.3D



12:30 p.m.  
Duration: 1 hr 43 mins  
Rating: G



3:00 p.m. & 10:15 p.m.  
Duration: 2 hrs 5 mins  
Rating: PG-13

DOLBY.3D



5:45 p.m. & 8:15 p.m.  
Duration: 1 hr 32 mins  
Rating: PG



### FAMILY DANCE PARTY

"The party don't start, till you walk in." Club New Year's Eve, you won't want to miss this journey of musical genres in history and performances by some of your favorite Cruise Staff. Bring your family and help us count down to a brand new year!

**D Lounge,**  
**Deck 4, Midship,**  
**10:30 p.m.**



### THEME NIGHT

Put on your platform shoes and hit the dance floor as we catch the disco fever. The party kicks off with a groovy dance number from the Studio 54 dancers.

**Fathoms (18+),**  
**Deck 3, Forward,**  
**10:45 p.m.**

# MORE TO ENJOY WHILE ONBOARD



## DISNEY VACATION CLUB® GROUP PREVIEW

Want to learn more about taking magical vacations year after year? Please see a Disney Vacation Club representative on Deck 4, Midship, or call 7-2805 from your stateroom phone for more information about our interactive group presentation.



## PLAN YOUR NEXT GETAWAY NOW

Our 3 and 4 night Bahamian Cruises are a perfect way to get an instant tropical recharge! Departing from Miami or Port Canaveral, most Bahamian cruises include a stop at Disney's private island, Castaway Cay. Visit the Future Cruise Sales Desk today and ask about our special onboard booking offer.



## PORT & SHOPPING INFORMATION

Nassau is one of the largest tax and duty free shopping locations! Don't miss the incredible shopping in Nassau today and take advantage of the savings! Meet Candace at Diamonds International #1A on your shopping map between 10:00 a.m. - 12:00 p.m. and enter to win a beautiful Diamond Heart Pendant! Make sure to pick up your shopping maps & coupons on the gangway.



**Deck 9, Forward - Phone : 7-1465**

## ACUPUNCTURE

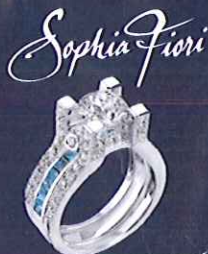
Naturally effective for pain, arthritis, sea sickness, stress, digestion, weight loss, and much more. Let us help you enjoy your magical cruise and beyond. We invite you to schedule a consultation with our Licensed Acupuncturist.

## SOPHIA FIORI DIAMOND TRUNK SHOW

Dazzling Diamonds,  
Tantalizing Tanzanite and  
many other Jewels.

## WHITECAPS

**Deck 4, Forward**



## PHOTOBOOK

Create a personalized story book of your Disney Cruise.

Please create your PhotoBook on a daily basis.

All orders need to be placed by 9:00 p.m. on the last night of the cruise.

## Connect @ Sea

We are now offering a NEW and improved Internet service to stay connected on your cruise like no other in the industry! Internet packages range from \$0.09 per MB - \$29.00 (1000 MB package). For more information contact your Connect@Sea Expert or Guest Services onboard.

## ONBOARD AIRLINE CHECK IN

This will be your final chance to enroll for Onboard Airline Check In. Stop by the Guest Services Desk, Deck 3, Midship by 8:00 p.m. tonight.

## QUARTER MASTERS ARCADE

Where can you fly a fighter jet, save a Princess, race NASCAR's greatest and beat bad guys all before dinner? Quarter Masters is on Deck 9, Midship, where the champions play.



We have arrived at the Bahamian paradise of Nassau! There are many exciting adventures to choose from in Nassau and Disney's private island, Castaway Cay! Why not swim with Dolphins or visit Atlantis Resort and their very own water park? Why not explore the beautiful undersea life with one of our many splashtacular adventures! Stop by the

**Port Adventures Desk, Deck 3, Midship,**  
and our team will be happy to assist!

## SHOPPING

### O'GILL'S PUB MERCHANDISE

Visit Sea Treasures where you'll find our new collection of O'Gill's Pub products including branded shirts. While at Sea Treasures, check out the new and fun label shirts featuring Grumpy, Pluto, and Steamboat Willie. Deck 3, Forward.

### ART GALLERY

Stop by the Art Gallery today to view our selection of Thomas Kinkadee Limited Edition Disney paintings. While there, see if you can find some hidden characters in the artwork. Deck 4, Midship.

### ERNST BENZ WATCHES

Manufactured in Switzerland and made in the time honored tradition of aviation timekeepers and the fine art of watch making, these large formats, self-winding instruments are renowned for their accuracy, durability and legibility. Stop by Whitecaps to see our full collection today! Deck 4, Forward.

### BRAND NAME WATCHES

Wide range of name brand watch collections. Men's and women's styles are available on watch brands such as Fossil, Kenneth Cole, Guess, and DKNY. Available in Whitecaps, Deck 4, Midship.

### NEW DOONEY & BOURKE ONBOARD

Loved for their fine leather and unique designs, Dooney & Bourke creates styles that are sure to inspire. Visit Whitecaps and check out the new Dooney & Bourke handbags designed especially for Disney Cruise Line®. Deck 4, Forward.

**Due to port regulations, when the ship is docked, the stores will remain closed.**

## IMPORTANT INFORMATION

### Security Notice

All Guests (including Children) who wish to disembark or embark the ship are required to present their Key to the World card at the gangway. A photo ID is also required for those Guests who are 18 years of age or older. Guests under the age of 18 are required to have a parent, guardian or other responsible adult sign an authorization form at the Guest Service Desk if they wish to go ashore unaccompanied or with any adult from another stateroom.

**Sunscreen/Insect Repellent Advisory**  
Use sunscreen and protect against mosquito borne illnesses by applying insect repellent when going ashore.

### Cold and Flu Reminder

Please wash hands frequently and thoroughly, particularly before meals. Contact the Health Center by dialing 7-1923, should anyone in your party become ill.

### Inclement Weather

For the safety of all Guests, outdoor events may be changed due to unforeseen weather conditions.

### Corridor Quiet Hours

As a courtesy to all our Guests, please recognize quiet hallway hours from 10:00 p.m. til 8:00 a.m.

### Environmental Message

With Disney's commitment to the Environment please refrain from throwing anything over the Ship's side. Thank you.

### No Reserved Seats Policy

As a courtesy to all Guests we kindly advise that the saving of seats is not permitted in the Walt Disney Theatre, and the saving of the sun loungers is not permitted on Deck 9 and 10. Items left unattended will be returned to lost and found at Guest Services, Deck 3, Midship.

### Smoking

For the comfort of our guests, the following areas are designated as smoking areas:  
• Deck 10 forward, Starboard side  
• Deck 9, forward, Starboard side at Quiet Cove  
• Deck 4, aft, port side from 6:00 p.m. to 6:00 a.m. only (all of Deck 4 is non-smoking from 6:00 a.m. to 6:00 p.m.)  
Smoking is prohibited inside all guest staterooms and on stateroom verandahs. Guests found smoking in their staterooms or on their verandahs will be charged a \$250 stateroom recovery fee.

### Walt Disney Theatre

Theatrical performances may use artificial fog, strobe lights, pyrotechnics and other special effects. For the safety of our performers and the comfort of those around you, the use of any photography or video recording device or any electronic equipment is prohibited.

### Verandah Safety

Please do not leave any combustible materials on your balcony when not present in your stateroom for safety reasons.

Morning	8:30	8:45	9:00	9:15	9:30	9:45	10:00	10:15	10:30	10:45	11:00	11:15	11:30	11:45	12:00	12:15	12:30	12:45	1:00	1:15	1:30
FUNNEL VISION	Mulan (G) Funnel Vision						Monsters, Inc. (G) Funnel Vision						Fun in the Sun Funnel Vision			Pixar Short Films (G) Funnel Vision					
BUENA VISTA THEATRE	Monsters University (G) <b>DOLBY 3D</b> Duration: 1 Hour 43 Minutes																				
CHARACTER		Princess Gathering Lobby Atrium	Captain America Preludes Jake Dk 4, Mid			Cpt. Hook Dk 4, Mid	Jake Dk 4, Mid														
FUN FOR ALL AGES			Mickey's Puzzle Playtime Disney's Oceaneer Club				Craft Corner Disney's Oceaneer Club						Ping Pong Tournament Wide World of Sports		Fun in the Sun Deck Stage				Family Crafts: 3D Crafts Promenade Lounge		
	Board Games Available in O'Gills Pub O'Gills Pub																				
ADULTS	Friends of Bill W. Animator's Palate			Detox for Health & Weight Loss Senses Spa & Salon				Arthritis & Back Pain Solutions Senses Spa & Salon					Wine Tasting (21+) Keys								
VIBE 14-17 YEARS OLD															Youth Activities Open House						
EDGE 11-14 YEARS OLD							Youth Activities Open House								Craft Corner						
OCEANEER LAB 3-12 YEARS OLD			Animation Antics				Game Challenge				Super Sloppy Science					Lunch					
OCEANEER CLUB 3-12 YEARS OLD			Youth Activities Open House									Aloha Luau					Lunch				
			Mickey's Puzzle Playtime						Craft Corner												

Afternoon	1:45	2:00	2:15	2:30	2:45	3:00	3:15	3:30	3:45	4:00	4:15	4:30	4:45	5:00	5:15	5:30	5:45	6:00	6:15	6:30	6:45	
FUNNEL VISION		Cars (G) Funnel Vision								Beauty & the Beast (G) Funnel Vision								WALL-E (G) Funnel Vision				
BUENA VISTA THEATRE						Saving Mr. Banks (PG-13) Duration: 2 Hours 5 Minutes										Planes (PG)  DOLBY 3D Duration: 1 Hour 32 Minutes						
CHARACTER		Mickey Mouse Deck 4											Minnie Preludes		Mickey Preludes							
											Belle Dk 5, Mid		Rapunzel Dk 5, Mid									
FUN FOR ALL AGES	Pictionary Challenge Promenade Lounge		Family Crafts: Buttons Promenade Lounge					Chip It GOLF (12+) Lobby Atrium		Bingo Pre Sales	\$5,000 Mega Jackpot BINGO Fathoms				Live Music with Infusion Duo Promenade Lounge					TWICE CHARMED AN ORIGINAL STORY ON THE DISNEY CHANNEL Walt Disney Theatre		
						Animation - Goofy Promenade Lounge					Toddler Time Promenade Lounge					Live Music with Dreem Lobby Atrium						
ADULTS			Mixology (21+) Keys		Relieving Back Pain & Improving Posture Senses Spa & Salon				Group Cycling Senses Spa Fitness Center		Disney Vacation Club Group Preview D Lounge						Club 18*21 - Wii Challenge O'Gills Pub				Pub Quiz O'Gills Pub	
VIBE 14-17 YEARS OLD		Animation Cells				Teen Choice				Ship Factor				Scavenger Hunt				ESPN Dream Team Draft Day		Dodgeball		
EDGE 11-14 YEARS OLD	Scavenger Hunt								Gender Wars				Dodgeball						Youth Activities Open House			
OCEANEER LAB 3-12 YEARS OLD		Hats Off to Peter Pan				Youth Activities Open House												Dinner				
					Anyone Can Cook																	
OCEANEER CLUB 3-12 YEARS OLD		Wacky Relay			Story Time with Belle								Once Upon a Time						Dinner			

Evening	7:00	7:15	7:30	7:45	8:00	8:15	8:30	8:45	9:00	9:15	9:30	9:45	10:00	10:15	10:30	10:45	11:00	11:15	11:30	11:45	12:00	
FUNNEL VISION	Tangled (PG) Funnel Vision											Oz The Great and Powerful (PG) Funnel Vision										
BUENA VISTA THEATRE	Planes (PG) <b>DOLBY 3D</b> Duration: 1 Hour 32 Minutes											Saving Mr. Banks (PG-13) Duration: 2 Hours 5 Minutes										
CHARACTER		Minnie Dk 4, Mid		Mickey Dk 4, Mid								Tiana Preludes		Rapunzel Preludes		Cinderella Preludes						
			Donald Preludes		Daisy Preludes								Minnie Dk 4, Mid		Mickey Dk 4, Mid							
FUN FOR ALL AGES		Bingo Pre Sales	Senses Spa Jackpot BINGO Fathoms			TWICE CHARMED AN ORIGINAL STORY ON THE DISNEY CHANNEL Walt Disney Theatre					MOUSETHEATER D Lounge		PETE'S PLACE D Lounge	Family Superstar Karaoke D Lounge								
			Who Wants to be a Mouseketeer? D Lounge								Live Music with Infusion Duo Promenade Lounge			Live Music with Infusion Duo Promenade Lounge								
ADULTS		70's Music Trivia O'Gills Pub						Pub Quiz O'Gills Pub			Live Music with Dreem Fathoms		Adult Variety: Scott Alexander Fathoms		No Dubs Fathoms		Club DJ See Bass Fathoms					
		Live Piano with Clara Oman Keys									Broadway Tribute Keys		18*21 - O'Gills O'Gills Pub				Clara Oman Live Keys					
VIBE 14-17 YEARS OLD	Dodgeball		Youth Activities Open House			AquaDunk Fun		Pump It Up				Smoothie Hour		Anyone Can Cook: Pizza			Gender Wars					
EDGE 11-14 YEARS OLD	Open House		That's Hilarious			AquaDunk Fun		Boys and Girls Chill						Anyone Can Cook: Pizza			Pajamarama Movie Night					
OCEANEER LAB 3-12 YEARS OLD		Magic Show						Who Wants To Be A Mouseketeer		Marshmallow Olympics		Youth Activities Open House										
												Super Sloppy Science										
OCEANEER CLUB 3-12 YEARS OLD			Marvel Avengers Academy					Heffalump Hunting						Camp Out								

Symbol for activities that will be repeated during the cruise



FOLD

Fold along the dotted lines and take me with you so you don't miss any of the fun!

FOLD

IN THE SPOTLIGHT SERIES

LOVE IT SERIES

LOVE IT SERIES

LOVE IT SERIES

LOVE IT SERIES

LOVE IT SERIES

LOVE IT SERIES

LOVE IT SERIES

LOVE IT SERIES

LOVE IT SERIES

LOVE IT SERIES

LOVE IT SERIES

TUESDAY, FEBRUARY 11, 2014 - NASSAU, BAHAMAS

# BUENA VISTA THEATRE

DOLBY 3D



12:30 p.m.  
Duration: 1 hr 43 mins  
Rating: G

Deck 5, Aft



3:00 p.m. & 10:15 p.m.  
Duration: 2 hrs 5 mins  
Rating: PG-13

DOLBY 3D



5:45 p.m. & 8:15 p.m.  
Duration: 1 hr 32 mins  
Rating: PG

## Character Appearances

**PRINCESS GATHERING RAPUNZEL**  
Lobby Atrium - 9:00 a.m.  
Deck 5, Midship - 5:30 p.m.  
Preludes - 10:00 p.m.

**JAKE - THE NEVERLAND PIRATE**  
Deck 4, Midship  
9:15 a.m. & 10:15 a.m.

**CAPTAIN AMERICA**  
Preludes - 9:15 a.m.

**CAPTAIN HOOK**  
Deck 4, Midship - 9:45 a.m.

**MICKEY & FRIENDS**  
Lobby Atrium - 2:00 p.m.

**MICKEY MOUSE**  
Deck 4 - 2:00 p.m.  
Preludes - 5:45 p.m.  
Deck 4, Midship  
7:45 p.m. & 10:15 p.m.

**BELLE**  
Deck 5, Midship - 4:45 p.m.

**MINNIE MOUSE**  
Preludes - 5:15 p.m.  
Deck 4, Midship  
7:15 p.m. & 9:45 p.m.



(P) - Port Side, (S) - Starboard Side  
Don't forget your Camera to capture those Magical Moments!  
Check here each day for Character appearances.  
For detailed Character appearance information, please see the Character Information Board in the Lobby Atrium.  
Meet-and-Greets will be advertised for the length of time the line will be open. To avoid disappointment, please meet at start time of appearances.

## YOUTH ACTIVITIES THEMED EXPERIENCES

**CLUBHOUSE SERIES**  
focuses on movement and features content which appeals to younger children.

**STORYBOOK SERIES**  
is designed with a strong connection to the Disney classic stories.

**JUMP UP! SERIES**  
includes large group games & movement-oriented activities.

**CREATE & INVENT SERIES**  
will have a tactile focus allowing children to create and admire their work.

**IN THE SPOTLIGHT SERIES**  
focuses on children's stage presence with lots of activities and enthusiasm.

**SOLVE IT! SERIES**  
are less active but will challenge children with problem/solutions-based activities.

**YOUTH ACTIVITIES OPEN HOUSE**  
Activities for families, adults and children of all ages to enjoy together.

## SHIP DIRECTORY

YOUTH ACTIVITIES	
DISNEY'S OCEANEER CLUB	Deck 5, Mid 9:00 AM - 12:00 MID
DISNEY'S OCEANEER LAB	Deck 5, Mid 9:00 AM - 12:00 MID
EDGE	Deck 2, Mid 10:00 AM - 1:00 AM
IT'S A SMALL WORLD NURSERY	Deck 5, Aft 8:00 AM - 11:00 PM
VIBE	Deck 11, Mid 12:00 PM - 2:00 AM

POOLS	
*Children under 12 years of age must have adult supervision in all pools.	
AQUADUNK	Deck 10, Mid 12:00 PM - 9:00 PM
AQUALAB	Deck 9, Aft 9:00 AM - 9:00 PM
GOOBY'S POOL	Deck 9, Mid 9:00 AM - 6:00 PM
NEPHEW'S SPLASH ZONE	Deck 9, Aft 9:00 AM - 10:00 PM
QUIET COVE POOL	Deck 9, Fwd 9:00 AM - 6:00 PM
TWIST 'N' SPOUT	Deck 9, Aft 6:00 AM - 12:00 MID
	Deck 9, Aft 11:30 AM - 9:00 PM

RECREATION	
PORT ADVENTURES DESK	Deck 3, Mid 9:00 AM - 11:00 AM
SENSSES FITNESS CENTER	Deck 9, Fwd 7:00 PM - 8:30 PM
WIDE WORLD OF SPORTS DESK	Deck 10, Fwd 8:00 AM - 10:00 PM
	24 HOURS

GENERAL INFORMATION	
BUENA VISTA THEATRE	Deck 5, Aft SHOWTIMES
DISNEY VACATION CLUB DESK	Deck 4, Mid 9:00 AM - 11:00 AM
	5:30 PM - 10:00 PM
FUTURE CRUISE SALES DESK	Deck 4, Mid 8:30 AM - 9:30 AM
	4:00 PM - 6:00 PM
	7:30 PM - 8:30 PM

SHOPPING	
FUNNEL VISION	Deck 9, Mid SHOWTIMES
GUEST SERVICES	Deck 3, Mid 24 HOURS
HAIR BRANDING	Deck 9, Mid 2:00 P.M. - 8:30 P.M.
MEDICAL HEALTH CENTER	Deck 1, Fwd 9:30 AM - 11:00 AM
	4:30 PM - 7:00 PM
PORT & SHOPPING DESK	Deck 3, Mid 7:30 PM - 8:30 PM
PRELUDES	Deck 4, Fwd 5:30 PM - 8:30 PM
QUARTER MASTERS (ARCADE)	Deck 9, Mid 24 HOURS
SENSSES SPA AND SALON	Deck 9, Fwd 6:30 AM - 10:00 PM
SHUTTERS PHOTO GALLERY	Deck 4, Aft 5:00 PM - 10:00 PM
WALT DISNEY THEATRE	Deck 4, Fwd SHOWTIMES
MICKEY'S MAINSAIL	Deck 4, Fwd 6:30 PM - 11:00 PM
QUACKS	Deck 9, Mid
SEA TREASURES	Deck 3, Fwd 7:00 PM - 11:00 PM
VISTA GALLERY	Deck 4, Mid 7:00 PM - 11:00 PM
WHITECAPS	Deck 4, Fwd 6:30 PM - 11:00 PM

**IMPORTANT NUMBERS**  
Fire/Security: 7-3001  
Medical EMERGENCY: 7-3000  
Health Center: 7-1923

**DINNER MENUS**  
Animator's Palate: Show Dinner  
Carnatic's: South American Dinner  
Lumiere's: French Dinner  
Dining Times: 5:45pm & 8:15pm

**WEATHER FORECAST**  
High Tide  
OF THE DAY  
Tuesday: Sunny  
High: 76°F/24°C  
Wednesday:  
Partly Sunny  
High: 78°F/26°C

## DINING & LOUNGES

CABANAS	
DECK 9, Aft	7:30 AM - 11:30 AM
DAISY'S DE-LITES	
DECK 9, Aft	7:00 AM - 9:30 AM
LUMIERE'S (A-LA CARTE)	
DECK 3, Mid	8:00 AM - 9:30 AM

LUNCHEON	
CABANAS	Deck 9, Aft 11:30 AM - 3:00 PM
DAISY'S DE-LITES	Deck 9, Aft 11:00 AM - 6:00 PM
LUMIERE'S	Deck 3, Mid 12:00 PM - 1:30 PM
PETE'S BOILER BITES	Deck 9, Aft 11:00 AM - 6:00 PM
PINOCCHIO'S PIZZERIA	Deck 9, Mid 11:00 AM - 6:00 PM

DINNER	
ANIMATOR'S PALATE	Deck 4, Aft 5:45 PM & 8:15 PM
CABANAS TABLE SERVICE	Deck 9, Aft 6:30 PM - 8:30 PM
CARIOCA'S	Deck 3, Aft 5:45 PM & 8:15 PM
LUMIERE'S	Deck 3, Mid 5:45 PM & 8:15 PM
PALO (FOR RESERVATIONS CALL 7-6643)	Deck 10, Aft 6:00 PM - 8:30 PM
PETE'S BOILER BITES	Deck 9, Aft 6:00 PM - 10:00 PM

LATE NIGHT SNACKS	
O'GILLS PUB	Deck 3, Fwd 10:45 PM - 11:45 PM
PINOCCHIO'S PIZZERIA	Deck 9, Mid 9:30 PM - 12:00 MID
PROMENADE LOUNGE	Deck 3, Aft 10:45 PM - 11:45 PM

ADDED FEATURES	
EYE SCREAM	Deck 9, Aft 11:00 AM - 11:00 PM
FROZONE TREATS	Deck 9, Aft 11:30 AM - 8:00 PM
BEVERAGE STATION	Deck 9, Aft 24 HOURS
ROOM SERVICE	Dial 7-4330 24 HOURS

ENTERTAINMENT - LOUNGES - BARS	
Adults must be 21 and older to consume alcoholic beverages.	
AFTER HOURS	
DECK 3, Fwd	(AFTER 9:00 PM ADULTS ONLY)
COVE CAFE (18+)	
DECK 9, Mid	7:00 AM - 12:00 MID
D LOUNGE	
DECK 4, Mid	SHOWTIMES
FATHOMS (18+)	
DECK 3, Fwd	7:00 PM - 2:00 AM
INTERNET CAFE	
DECK 3, Aft	24 HOURS
KEYS (18+)	
DECK 3, Fwd	5:30 PM - 12:30 AM
O'GILLS PUB (18+)	
DECK 3, Fwd	5:00 PM - 12:30 AM
PRELUDES	
DECK 4, Fwd	5:30 PM - 8:30 PM
PROMENADE LOUNGE	
DECK 3, Aft	9:00 AM - 12:00 MID
PINOCCHIO'S PIZZERIA	
DECK 9, Mid	9:30 AM - 12:00 MID
SIGNALS (18+)	
DECK 9, Fwd	9:00 AM - 10:30 PM

Public Health Advisory: Consuming raw or undercooked meats, poultry, seafood, shellfish, or eggs may increase your risk for foodborne illness, especially if you have certain medical condition.

All Ashore: Approx. 9:30 a.m.  
All Aboard: 5:45 p.m.  
SHIP'S AGENT IN NASSAU  
R.H. CURRY & CO., LTD.  
Ph: 242 323 8425