

PERSONAL NAVIGATOR

Disney FANTASY

THURSDAY, MARCH 13, 2014

Sunrise: 6:48 a.m. Sunset: 7:01 p.m.
Evening Attire: Semi Formal

Today: Partly Cloudy High: 70°F/21°C
Tomorrow: Partly Cloudy High: 68°F/20°C

DAY AT SEA

Disney's Believe

Genie from Aladdin and many of Disney's most-beloved magic makers take a father on a magical journey to show him that anything is possible if you just believe.

WALT DISNEY THEATRE
DECK 3 & 4, FORWARD

3:00 p.m., 6:15 p.m. & 8:30 p.m.



As a courtesy to all Guests, we kindly advise that the saving of seats is not permitted in the Walt Disney Theatre.



Assistance available at the entrance to the Walt Disney Theatre 30 minutes prior to show time.

Disney FANTASY Fun Facts

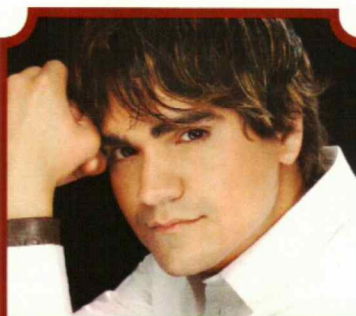
While the cute baby elephant, Dumbo serves as a fantastic stern character, in real life he would have to gather 24,266 other adult male African elephants to match the weight of the Disney Fantasy.

A "light point" is shipbuilders' lingo for anything that's a light. There are approximately 80,000 light points on the Disney Fantasy – "double the normal number for a ship this size," according to Meyer Werft, the shipyard in Germany where the Disney Fantasy was built. The large number is the result of Disney's flair for theatrical experiences – accomplished primarily with LEDs and other "environmentally friendly" lighting.

Looking upward in the ship's Lobby Atrium brings Guest's eye-to-crystal with a glowing piece of "Art Nouveau-inspired jewelry" – a cascading chandelier flowing downward from a massive stained-glass flourish on the ceiling in peacock hues of greens and blues. The chandelier itself is more than 10 feet in diameter, a one-of-a-kind work of art evoking a peacock in stained glass and more than 60,000 clear Swarovski crystal beads.

Debark Talk Broadcast

Your Cruise Director, Ray, presents important information including details regarding U.S. Customs and Border Protection procedures. Tune into Channel 5 of your stateroom TV.



ADULT VARIETY ACT

Featuring the
Magic & Illusion of
Jason Bishop, as he entertains
you in this adult exclusive show.

Walt Disney Theatre (18+),
Deck 3 & 4, Forward,
11:00 p.m.
(Doors open at 10:45 p.m.)

Don't Miss:

Disney Animation: Staging a Scene

D Lounge, Deck 4, Midship - 9:45 a.m. & 12:45 p.m.

Go behind the scenes at Walt Disney Animation Studios and learn how basic poses, silhouette, and placement (long shot, medium shot, close-up) enhance animation storytelling. Then, participate in a drawing exercise where you make the choices to communicate a story in this fun and fascinating enrichment program.

Captain's Signing

White Caps, Deck 3, Forward - 12:15 p.m.

Meet the Master of the Disney Fantasy and have your cruise memories signed.

Mirror, Mirror

D Lounge, Deck 4, Midship - 7:30 p.m. & 9:45 p.m.

Head to D Lounge for the fairest game show of them all, Mirror, Mirror featuring the Magic Mirror and everyone's favorite dwarf, Dopey.

Majority Rules (18+)

The Tube, Deck 4, Aft - 10:15 p.m.

Join your Club Host, to find out who really rules!



Sport's Simulators

Digital sports simulators are available at Goofy's Sports Deck on Deck 13, Aft. This state-of-the-art virtual sports experience includes golf, basketball, baseball, hockey, football and soccer. Book now at the Port Adventures Desk, Deck 5, Midship.

DINNER MENU

Animator's Palate: Captain's Gala
Enchanted Garden: Captain's Gala
Royal Court: Captain's Gala

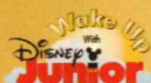
DRINK OF THE DAY

High Tide (Alcoholic)
Passion Cream Freeze
(Non Alcoholic)

IMPORTANT NUMBERS

Fire/Security: 7-3001
Medical Emergency: 7-3000
Health Center: 7-1923

FUN FOR ALL AGES HIGHLIGHTS



WAKE UP WITH DISNEY JUNIOR

D Lounge, Deck 4, Midship - 9:00 a.m.

What happens when you experience unlimited fun with your favorite Disney Junior shows? You get an exciting dance party designed especially for preschoolers ages seven and under.



JACK-JACK'S INCREDIBLE DIAPER DASH

Lobby Atrium, Deck 3, Midship - 10:00 a.m.

Calling all baby Cruisers! It's time to take to the mat to see who's the fastest crawler of the seven seas! Register your baby 15 minutes prior to the big race.



MICKEY 200

The Tube, Deck 4, Aft - 10:30 a.m.

Don't eat your vegetables... race them in this wild and wacky charge to the finish line. May the best veggie win! (Limited Availability)



DISNEY VACATION CLUB GROUP PREVIEW

The Tube, Deck 4, Aft - 12:00 p.m.

Want to learn more about taking magical vacations year after year? Please see a Disney Vacation Club representative on Deck 4, Midship, or call 7-2805 from your stateroom phone for more information about our interactive group presentation.

STEP IN TIME DANCE CLASS

Lobby Atrium, Deck 3, Midship - 2:00 p.m.

Join our Walt Disney Theatre Dance Captain to learn an energetic number from Disney's Believe. Fun for everyone.

OFFICER PIN TRADING

Preludes, Deck 3, Forward - 7:30 p.m.

Come trade pins with the Officers of the Disney Fantasy.



CLUB NEW YEAR'S EVE

D Lounge, Deck 4, Midship - 10:15 p.m.

Club New Year's Eve, you won't want to miss this journey of musical genres in history and performances by some of your favorite Cruise Staff. Bring your family and help us count down to a brand new year!

ADULT ACTIVITY HIGHLIGHTS



SENSES SPA FITNESS CLASSES & SEMINARS

Sunrise Stretch - Donald's Pool - 7:00 a.m.

Fab Abs - Donald's Pool - 7:30 a.m.

Body Sculpt Boot Camp (Nom. Fee) - Senses Fitness Center - 9:00 a.m.

Detox For Health and Weight Loss - Senses Fitness Center - 11:00 a.m.

Improving Your Posture-Walk in Comfort - Senses Spa & Salon - 12:00 p.m.

Introduction to Acupuncture - Senses Fitness Center - 1:15 p.m.

Secrets to a Flatter Stomach - Senses Fitness Center - 2:00 p.m.

Group Cycling - Senses Fitness Center - 4:00 p.m.

Complimentary Footprint Analysis - Senses Spa & Salon - 5:00 p.m.

Fitness Frenzy (13-17, Nom. Fee) - Senses Fitness Center - 7:00 p.m.

TASTING CLASSES

Chocolate & Liquor Tasting (21+) - Ooh La La - 12:15 p.m.

Rum Tasting (21+) - Meridian - 1:00 p.m.

Stem to Stern Wine Tasting (21+) - Ooh La La - 1:45 p.m.

Mixology (21+) - Skyline - 2:00 p.m. & 4:00 p.m.

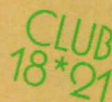
Martini Tasting (21+) - Meridian - 3:00 p.m.

Italian Cocktail Tasting (21+) - La Piazza - 4:45 p.m.

Tequila & Margarita Tasting (21+) - Ooh La La - 4:45 p.m.

Please make reservations for tastings at Guest Services for a nominal fee.

Tasting Seminars are only for Guests 21 and Older.



CLUB 18*21 - 2000'S MUSIC CHALLENGE

O'Gills Pub, Deck 4, Aft - 11:45 a.m.

CLUB 18*21 - LUNCH

Royal Court, Deck 3, Midship - 12:30 p.m.

CLUB 18*21 - MIXER

The Tube, Deck 4, Aft - 10:00 p.m.



ESPN DREAM TEAM DRAFT DAY - BASEBALL

O'Gills Pub, Deck 4, Aft - 9:45 a.m.

Play ball! Join the "Commissioner" and engage in this interactive fantasy baseball draft unlike anything you've ever seen! Can YOU draft the greatest baseball team of All-Time?

MOVIE QUOTES TRIVIA

O'Gills Pub, Deck 4, Aft - 10:45 a.m.

"Life is like a box of Chocolates" Know the movie? Join your Cruise Staff and test your Movie Quote knowledge.

\$10,000 MEGA JACKPOT

D Lounge, Deck 4, Midship

Card Sales - 10:45 a.m.

Game Starts - 11:00 a.m.

It's Big, it's Massive, it's Supersized! It's \$10,000 MEGA Jackpot Bingo! Take home \$10,000 if you can cover your card in 46 numbers or less. If not, we carry on to play for the biggest cash prize of the session.

FINAL JACKPOT BINGO

Buena Vista Theatre, Deck 4 & 5, Forward

Card Sales - 4:00 p.m.

Game Starts - 4:30 p.m.

The snowball jackpot MUST BE WON at this final session! Beat the line and get your cards early. Who will be the lucky winner? It could be you!



YOUTH ACTIVITIES HIGHLIGHTS

DINE & PLAY

A convenience for families dining at 8:15 p.m., our Youth Activities Counselors will be available at 9:15 p.m. at the entrance of Royal Court, Enchanted Garden and Animator's Palate dining rooms to bring registered children to join the fun in the Youth Activity areas.



Deck 5, Midship (7-5864) 9:00 a.m. - 11:30 p.m.

OPEN HOUSE

8:00 - 9:00 a.m.

Your chance to see our toddler space, It's A Small World Nursery.



Deck 5, Midship (7-1440)

(3-12 years old)

9:00 a.m. - 12:00 mid

CRUISIN' WITH CRUSH

10:45 a.m.

Be sure to check out Disney's Oceaneer Club to see Crush when he stops by!

ONCE UPON A TIME

7:45 p.m.

Join Bartleby the Bookmaker for a magical, musical story time featuring a Disney Princess!



Deck 5, Midship (7-1445)

(3-12 years old)

9:00 a.m. - 12:00 mid

SUPER SLOPPY SCIENCE

11:00 a.m.

Join Professor Make-O-Mess in some of the most extreme experiments you will ever see in the world of Super Sloppy Science!

STITCH'S ADVENTURE SQUAD

7:30 p.m.

Stitch, everyone's favorite alien, is making an appearance to share some of his mischievous games and activities.



Deck 13, Midship (7-9743)

(11-14 years old)

9:00 a.m. - 1:00 a.m.

ICE CREAM SOCIAL

1:00 p.m.

I scream, you scream, we all scream for ice cream! Make your own frosty treat with your Counselors.

MAGIC SHOW

9:15 p.m.

The Magnificent Magician will demonstrate to you some of the best known magic tricks on the sea.



Entrance on Deck 4, Forward (7-9418)

(14-17 years old)

9:00 a.m. - 2:00 a.m.

DREAM NOW! SEA HOW! - CREATE IT

3:30 p.m.

Imagine a job where your days are spent dreaming up plots, characters, designs or mechanics that only come from one place... In this VIP Experience you will meet one of the creative minds with Disney. A special Guest will ignite your imagination and answer your questions.

BUENA VISTA THEATRE

Deck 4 & 5, Midship

Today's Movies

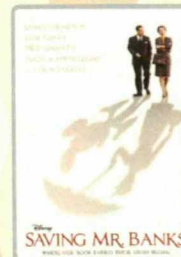
SING-A-LONG



8:00 a.m. & 2:00 p.m.

Duration: 1 hr 48 mins

Rating: PG



10:30 a.m.

Duration: 2 hrs 5 mins

Rating: PG-13

DOLBY 3D



5:45 p.m. & 8:15 p.m.

Duration: 1 hr 51 mins

Rating: PG-13



12:01 a.m.

Duration: 2 hrs 10 mins

Rating: PG-13



FAMILY VARIETY ACT

Featuring the Comedy & Hypnosis of Dale K, as he entertains the entire family in this fun-filled show.

The Tube,
Deck 4, Aft,
7:30 p.m.



MOVIE PREMIER

12:01 a.m.

DOLBY 3D

Rated: PG-13

Duration:
2 Hours 10 Minutes

Buena Vista Theatre,
Deck 4 & 5, Midship

YOUTH ACTIVITIES OPEN HOUSE

Open House is an opportunity for all to come and participate in a variety of exciting activities and free time in the Oceaneer Club, Oceaneer Lab, It's A Small World Nursery, Vibe and Edge throughout the cruise. During these times secured programming will still be offered in the other venue for those looking to check their children into care.

Disney's Oceaneer Lab: 10:00 p.m. - 12:00 mid

Disney's Oceaneer Club: 9:00 a.m. - 10:30 a.m.

Vibe: 9:00 a.m. - 10:00 a.m. & 6:30 p.m. - 8:30 p.m.

Edge: 9:00 a.m. - 11:00 a.m. & 5:00 p.m. - 7:00 p.m.

MORE TO ENJOY WHILE ONBOARD



Someone has stolen paintings on the ship! Use your special detective "badge" to track down the villain and help Mickey get back those paintings!

Deck 2 & 5, Midship
9:00 a.m. - 10:00 p.m.




SALON TASTER SPECIAL

- Scalp Massage
- European Facial
- Hand Treatment
- Sunglow Makeover
- Conditioning Hair Treatment
- Eye Collagen Treatment
- Foot & Ankle Massage
- Neck & Shoulder Massage

Three for 99.00
Five for 119.00
All Eight for 139.00

GUESS THE CARAT!

Guess the carat weight of one of our exquisite Sophia Fiori diamond rings. Whoever guesses closest wins a 5 carat midnight sapphire and a pair of midnight black sapphire studs! 9:30 a.m. - 7:00 p.m. Winners announced and raffle at 7:30 p.m. Must be present to win! White Caps, Deck 3, Forward. This offer is not affiliated with Disney Cruise Line®.



Shutters

SMILE

Tonight is your last chance for professional portraits! Capture the magic of your vacation at one of our portrait studios and let the memories live.

Visit our professional portrait studios located in the Lobby Atrium, Deck 3, Midship.

5:00 p.m. - 6:00 p.m.
7:15 p.m. - 8:30 p.m.
9:30 p.m. - 10:30 p.m.

**Please note that photos are available for viewing on our interactive photo kiosks approximately five hours after being taken and are only available for purchase during this cruise.*

CELEBRATE THE SEASONS AT SEA
Disney Cruise Line is adding an extra layer of magic with enchanting holiday celebrations. One's a little spooky and the other is very merry! Visit the Onboard Sales Desk today for details about Halloween on the High Seas and Very Merrytime Cruises. Plus, get details about our special onboard booking offer!

ARR-CADE
Where can you be a ninja, play the guitar like a rock star, race a car down the streets of Tokyo and along the way WIN some great prizes? Arr-CADE located Deck 11, Aft where the pirates play.

runDisney: CASTAWAY CAY 5K REGISTRATION (10+)
Sign up today for the runDisney: Castaway Cay 5K! Please visit the Port Adventures Desk or the Guest Services Desk to register at anytime prior to our arrival at Disney's Castaway Cay. Please note that runners must be 10 years of age or older to participate.

Connect@Sea
We are now offering a NEW and improved Internet service to stay connected on your cruise like no other in the industry! Internet packages range from \$0.09 per MB - \$29.00 (1000 MB package) limited time promotional offer. For more information contact your Connect@Sea Expert or Guest Services onboard.

Disney Cruise Line PORT ADVENTURES

Disney's private island Castaway Cay not only offers a terrific family beach day, but many other excursions and rentals to compliment. Snorkeling, bike and float rentals, parasailing plus much more, means that there is something for everyone at Disney's Castaway Cay. To make your reservation, visit the Port Adventures Desk, Deck 5, Midship.

SHOPPING

ERNST BENZ WATCHES
Manufactured in Switzerland and made in the time honored tradition of aviation timekeepers and the fine art of watch making, these large formats, self-winding instruments are renowned for their accuracy, durability and legibility. Stop by White Caps to see our full collection today! Deck 3, Forward.

OFFICER PIN TRADING
Come and trade pins with the Officers of the Disney Fantasy® Cruise Ship at 7:15 p.m. in Preludes, Deck 3, Forward.

DARREN WILSON ART AND MORE!
Visit the Vista Gallery today where you can admire beautiful artwork featuring some of your favorite Disney characters created by celebrated artists such as Darren Wilson. From original canvas paintings to smaller print copies, the Vista Gallery offers the opportunity for you to take some of the magic home! Deck 4, Midship.

CAPTAIN'S SIGNING
Don't miss your chance to meet the Master of the Disney Fantasy! Stop by White Caps today at 12:15 p.m. where you can have your cruise mementos signed by our Captain. Deck 3, Forward.

FRAGRANCE OF THE DAY
Stop by White Caps today and see if our selected scent suits your style! Deck 3, Forward.

IMPORTANT INFORMATION

Security Notice
All Guests (including children) who wish to disembark the ship are required to present their Key to the World card at the gangway. A photo ID is also required for those Guests who are 18 years of age or older. Guests under the age of 18 are required to have a parent, guardian or other responsible adult sign an authorization form at the Guest Service Desk if they wish to go ashore unaccompanied or with any adult from another stateroom.

Sunscreen/Insect Repellent Advisory
Use sunscreen first and protect against mosquito borne illnesses by applying insect repellent on top of sunscreen when going ashore.

Cold and Flu Reminder
Please wash hands frequently and thoroughly, particularly before meals. Contact the Health Center by dialing 7-1923, should anyone in your party become ill.

Corridor Quiet Hours
As a courtesy to all our Guests, please recognize quiet hallway hours from 10:00 p.m. til 8:00 a.m.

Inclement Weather
For the safety of all Guests, outdoor events may be changed due to unforeseen weather conditions.

Environmental Message
With Disney's commitment to the Environment, please refrain from throwing anything over the Ship's side. Thank you!

No Reserved Seats Policy
As a courtesy to all our Guests, we kindly advise that the saving of seats is not permitted in the Walt Disney Theatre, and the saving of the sun loungers is not permitted on Deck 11, 12, and 13. Items left unattended will be returned to lost and found at Guest Services, Deck 3 Midship.

Smoking
For the comfort of our guests, the following areas are designated as smoking areas:
• Deck 13, forward, port side by Currents
• Deck 12, aft, port side outdoor area that is accessible through the Meridian Lounge
• Deck 4, aft, port side from 6:00 p.m. to 6:00 a.m. only (all of Deck 4 is non-smoking from 6:00 a.m. to 6:00 p.m.) Smoking is prohibited inside all guest staterooms and on stateroom verandahs. Guest found smoking in their staterooms or on their verandahs will be charged a \$250 stateroom recovery fee.

Walt Disney Theatre
Theatrical performances may use artificial fog, strobe lights, pyrotechnics and other special effects. For the safety of our performers and the comfort of those around you, the use of any photography, video recording device or any electronic equipment is prohibited.

Verandah Safety
Please do not leave any combustible materials on your balcony when not present in your stateroom for safety reasons.

Morning	8:30	8:45	9:00	9:15	9:30	9:45	10:00	10:15	10:30	10:45	11:00	11:15	11:30	11:45	12:00	12:15	12:30	12:45	1:00	1:15	1:30
FUNNEL VISION		Tinker Bell (G) Funnel Vision						Brave (PG) Funnel Vision									The Princess and the Frog (G) Funnel Vision				
BUENA VISTA THEATRE		Frozen: Sing-A-Long (PG) Duration: 1 Hour 48 Minutes < Starts at 8:00 a.m.						Saving Mr. Banks (PG-13) Duration: 2 Hours 5 Minutes													
CHARACTERS			Princess Anna Preludes	Tinker Bell Lobby Atrium (V)				Pluto Dk 4, Balcony		Princess Anna Preludes		Princess Gathering Lobby Atrium				Sofia Dk 4, Balcony				Character Dance Party Lobby Atrium	
			Mickey Dk 4, Balcony			Donald Dk 4, Balcony			Tinker Bell Lobby Atrium (V)						Minnie Dk 4, Balcony						
FUN FOR ALL AGES		Open House Toddler Time It's A Small World Nursery < Starts at 8:00 a.m.	Disney Junior D Lounge					Crafts - Memory Pages La Piazza	Bingo Pre Sales	\$10,000 Mega Jackpot D Lounge					Captain's Signing White Caps	Disney Animation Staging a Scene D Lounge					
			Ornami Frogs La Piazza		Disney Animation: Staging a Scene D Lounge				Mickey 200 The Tube (Limited Availability)						The Tube - Group Preview		Crafts: 3D Crafts La Piazza				
ADULTS		Friends of Bill W. Outlook			Art of The Theme Show Tour Pre-Book at Guest Services				Movie Quotes Trivia O'Gills Pub					Club 18*21 - 2000's Music Challenge O'Gills Pub		Club 18*21 - Lunch Royal Court		Ultimate Disney Trivia O'Gills Pub			
					Boot Camp (Nom. Fee) Senses Fitness Center			ESPN Dream Team Draft Day - Baseball O'Gills Pub			Detox for Health & Weight Loss Senses Spa & Salon				Improve Posture Senses Spa & Salon		Singles Lunch Royal Court		Introduction to Acupuncture Senses Fitness Center		
VIBE 14-17 YEARS OLD				Youth Activities Open House			Coffee Break			Digi Hunt					Sun Deck Fun						
EDGE 11-14 YEARS OLD				Youth Activities Open House						Disney Cruise Line Trivia					Game Challenge				Ice Cream Social		
OCEANEER LAB 3-12 YEARS OLD				Human Bingo						Wii Challenge											
							Disney Animation: Creating a Character			Super Sloppy Science										Get the Hook	
OCEANEER CLUB 3-12 YEARS OLD				Youth Activities Open House																	
						Little Einstein's Adventure				Cruisin' with Crush			Journey to Neverland							Tinker Bell's Talent Show	
Afternoon	1:45	2:00	2:15	2:30	2:45	3:00	3:15	3:30	3:45	4:00	4:15	4:30	4:45	5:00	5:15	5:30	5:45	6:00	6:15	6:30	6:45
FUNNEL VISION								The Lion King (G) Funnel Vision								Bedtime Stories (PG) Funnel Vision					
BUENA VISTA THEATRE		Frozen: Sing-A-Long (PG) Duration: 1 Hour 48 Minutes								Bingo Pre Sales		Final Jackpot Bingo					Thor: The Dark World (PG-13) Duration: 1 Hour 51 Minutes				
CHARACTERS				Hook & Smeek Dk 4, Balcony			Goofy Dk 4, Balcony					Chip & Dale Dk 4, Balcony				Snow White Preludes	Mickey Dk 4, Balcony				
								Hook & Smeek Dk 4, Balcony					Belle Preludes		Minnie Dk 4, Balcony						
FUN FOR ALL AGES		Towel Folding The Tube		Disney Tunes Trivia La Piazza		Disney's Believe Walt Disney Theatre				Bingo Pre Sales		Final Jackpot BINGO Buena Vista Theatre				Talent Show Rehearsals D Lounge		Live Music with Ash & Mike La Piazza			Disney's Believe
				Step in Time Dance Class Skyline				Crafts - 3D Crafts La Piazza			Toddler Time - Coffee and Play Outlook					Live Music with Take Cover Lobby Atrium			Walt Disney Theatre		
ADULTS		Mixology (21+) O'Gills Pub		Team Trivia O'Gills Pub			Chip It Golf Lobby Atrium			Group Cycling Senses Fitness Center			Tequila & Margarita Tasting (21+) Ooh La La				Pub Quiz O'Gills Pub				
		Wine Tasting (21+) Ooh La La		Anyone Can Cook - Lobster Ravioli D Lounge			Martini Tasting (21+) Meridian		90's Music Trivia O'Gills Pub		Mixology (21+) Skyline				Footprint Analysis Senses Spa & Salon						
VIBE 14-17 YEARS OLD		Dive into DJ'ing						Dream Now! Sea How! - Create It			Hold The Phone				Disney Animation: Cartoon Physics			Open House			
EDGE 11-14 YEARS OLD		Scavenger Hunt			Pictionary		Disney Animation: Cartoon Physics			Sports Deck Fun					Youth Activities Open House						
OCEANEER LAB 3-12 YEARS OLD				Craft Corner						Game Challenge											
				Anyone Can Cook			GAGA Ball			Craft Corner								Piston Cup Challenge			
OCEANEER CLUB 3-12 YEARS OLD				Magic PlayFloor																	
						Memory Wall		Heffalump Expodishun			Mickey's Puzzle Playtime							Little Einstein's Adventure			
Evening	7:00	7:15	7:30	7:45	8:00	8:15	8:30	8:45	9:00	9:15	9:30	9:45	10:00	10:15	10:30	10:45	11:00	11:15	11:30	11:45	12:00
FUNNEL VISION					Enchanted (PG) Funnel Vision								Remember the Titans (PG) Funnel Vision								
BUENA VISTA THEATRE						Thor: The Dark World (PG-13) Duration: 1 Hour 51 Minutes											Need For Speed (PG-13) Duration: 2 Hours 10 Minutes -> Starts at 12:01 a.m.				
CHARACTERS			Snow White Lobby Atrium (V)		Mickey Dk 4, Balcony						Donald Dk 4, Balcony										
			Minnie Dk 4, Balcony		Cinderella Lobby Atrium (V)								Minnie Dk 4, Balcony								
FUN FOR ALL AGES				Variety: Dale K The Tube - Hypnotist				Disney's Believe Walt Disney Theatre					Disney's Mirror D Lounge		Red New Year's D Lounge		Family Superstar Karaoke D Lounge				
				Mirror, Mirror D Lounge										Live Music with Take Cover Lobby Atrium			Live Music with Take Cover Lobby Atrium				
				Officer Pin Trading Preludes																	
ADULTS				Live Guitar with Tony Delaney O'Gills Pub					Pub Quiz O'Gills Pub				Live Music with Ash & Mike La Piazza		Majority Rules The Tube			Club 18*21 - Mixer The Tube		Greg Alcock LIVE La Piazza	
				Live Music with Ash & Mike La Piazza														The Magic & Illusion of JASON BISHOP Walt Disney Theatre		Club DJ Ollie The Tube	
VIBE 14-17 YEARS OLD				Youth Activities Open House						Pump It Up					Bring It			Magic Show			
EDGE 11-14 YEARS OLD				Karaoke			Game Challenge						Magic Show			Gender Wars	Game Challenge		Pajamarama Movie Night		
OCEANEER LAB 3-12 YEARS OLD				Four Square				Mirror, Mirror								Youth Activities Open House					
						Stitch's Adventure Squad		Four Square				Dance Party				Piston Cup Challenge			Magic PlayFloor		
OCEANEER CLUB 3-12 YEARS OLD				Craft Corner				Relay Games							Craft Corner						
						Once Upon a Time				Game Challenge						Camp Rocking Out!			Game Challenge		

Symbol for activities that will be repeated during the cruise



Youth Activities Open House



FOLD

Fold along the dotted lines and take me with you so you don't miss any of the fun!

FOLD

IN THE SPOTLIGHT SERIES
SOLVE IT! SERIES

JUMP UP! SERIES
CREATE & INVENT SERIES

CLUBHOUSE SERIES
STORYBOOK SERIES

THURSDAY, MARCH 13, 2014 - DAY AT SEA

BUENA VISTA THEATRE

Deck 4 & 5, Midship

SING-A-LONG



8:00 a.m. & 2:00 p.m.
Duration:
1 hr 48 mins
Rating: PG



10:30 a.m.
Duration:
2 hrs 5 mins
Rating: PG-13



5:45 p.m. & 8:15 p.m.
Duration:
1 hr 51 mins
Rating: PG-13

DOLBY 3D



12:01 a.m.
Duration:
2 hrs 10 mins
Rating: PG-13

Character Appearances

MICKEY MOUSE

Deck 4, Balcony - 9:15 a.m.,
5:45 p.m. & 7:45 p.m.

PRINCESS ANNA OF ARENDELLE

Preludes - 9:15 a.m. & 10:45 a.m.

TINKER BELL

Lobby Atrium (V)
9:30 a.m. & 10:30 a.m.

DONALD DUCK

Deck 4, Balcony
9:45 a.m. & 9:15 p.m.

PLUTO

Deck 4, Balcony - 10:15 a.m.

PRINCESS GATHERING

Lobby Atrium - 11:00 a.m.

PRINCESS SOFIA

Deck 4, Balcony
11:15 a.m. & 12:30 p.m.

PRINCESS MINNIE

Deck 4, Balcony - 12:00 p.m.

CHARACTER DANCE PARTY

Lobby Atrium - 1:15 p.m.

CAPTAIN HOOK & MR SMEE

Deck 4, Balcony
2:30 p.m. & 3:30 p.m.

GOOFY

Deck 4, Balcony - 3:00 p.m.

CHIP & DALE

Deck 4, Balcony - 4:45 p.m.

BELLE

Preludes - 5:00 p.m.

MINNIE MOUSE

Deck 4, Balcony - 5:15 p.m.,
7:15 p.m. & 9:45 p.m.

SNOW WHITE

Preludes - 5:30 p.m.
Lobby Atrium (V) - 7:15 p.m.

CINDERELLA

Lobby Atrium (V) - 7:45 p.m.

(H) Hallway - (S) Starboard Side - (P) Port Side - (V) Vestibule

Don't forget your Camera to capture those magical moments!

For details of daily Disney character appearances, refer to the character line in your Navigator Grid, or the digital character board in the Lobby Atrium.

IMPORTANT NUMBERS

Fire/Security: 7-3001

Medical Emergency: 7-3000

Health Center: 7-1923

YOUTH ACTIVITIES THEMED EXPERIENCES

CLUBHOUSE SERIES
focuses on movement and features content which appeals to younger children.

JUMP UP! SERIES
includes large group games & movement-oriented activities.

IN THE SPOTLIGHT SERIES
focuses on children's stage presence with lots of activities and enthusiasm.

STORYBOOK SERIES
is designed with a strong connection to the Disney classic stories.

CREATE & INVENT SERIES
will have a tactile focus allowing children to create and admire their work.

SOLVE IT! SERIES
are less active, but will challenge children with problems/solutions-based activities.

YOUTH ACTIVITIES OPEN HOUSE

A non-secured program with activities for families, adults and children of all ages to enjoy together.

SHIP DIRECTORY

YOUTH ACTIVITIES

DISNEY'S OCEANEER CLUB	DECK 5, MID	9:00 AM - 12:00 MID
DISNEY'S OCEANEER LAB	DECK 5, MID	9:00 AM - 12:00 MID
EDGE	DECK 13, MID	9:00 AM - 1:00 AM
VIBE	DECK 4, FWD	9:00 AM - 2:00 AM
IT'S A SMALL WORLD NURSERY	DECK 5, MID	9:00 AM - 11:30 PM

POOLS & MORE

* Children under 12 must have adult supervision in pool areas.

AQUADUCK	DECK 12, MID	9:00 AM - 10:00 PM
AQUALAB	DECK 12, AFT	10:00 AM - 6:00 PM
DONALD'S POOL	DECK 11, MID	9:00 AM - 6:00 PM
		8:00 PM - 10:00 PM
MICKEY'S POOL	DECK 11, MID	6:00 AM - 11:00 PM
MICKEY'S SLIDE	DECK 11, MID	9:00 AM - 6:00 PM
NEMO'S REEF	DECK 11, MID	9:00 AM - 6:00 PM
QUIET COVE POOL (18+)	DECK 11, FWD	6:00 AM - 12:00 MID
SATELLITE FALLS	DECK 13, FWD	6:00 AM - 8:00 PM

RECREATION

GOLF/SPORTS SIMULATORS	DECK 13, AFT	9:00 AM - 6:00 PM
GOOFY GOLF	DECK 13, AFT	8:00 AM - 10:00 PM
GOOFY'S SPORTS DECK	DECK 13, AFT	8:00 AM - 6:00 PM
MIDSHIP DETECTIVE AGENCY	DECKS 2 & 5, MID	9:00 AM - 10:00 PM
PORT ADVENTURES DESK	DECK 5, MID	10:00 AM - 12:00 PM
		2:00 PM - 5:00 PM
		7:00 PM - 8:30 PM
SENSES FITNESS CENTER (18+)	DECK 11, FWD	6:30 AM - 10:00 PM

GENERAL INFORMATION

ARR-CADE	DECK 11, AFT	24 HOURS
DISNEY VACATION CLUB	DECK 4, MID	9:00 AM - 11:30 AM
		2:30 PM - 10:00 PM
GUEST SERVICES	DECK 3, MID	24 HOURS
MEDICAL HEALTH CENTER	DECK 1, FWD	9:30 AM - 11:00 AM
		4:30 PM - 7:00 PM
ONBOARD SALES DESK	DECK 4, MID	9:00 AM - 12:00 PM
		2:00 PM - 6:00 PM
		7:30 PM - 10:00 PM
PORT & SHOPPING DESK	DECK 4, MID	
PRELUDES	DECK 3, FWD	2:30 PM - 3:15 PM
		5:45 PM - 6:30 PM
		8:00 PM - 8:45 PM
SENSES SPA AND SALON	DECK 11, FWD	8:00 AM - 10:00 PM
SHUTTERS PHOTO GALLERY	DECK 4, MID	10:00 AM - 11:00 PM
SHUTTERS DIGITAL	DECK 4, MID	24 HOURS

SHOPPING

BIBBIDI BOBBIDI BOUTIQUE	DECK 5, MID	9:00 AM - 9:00 PM
MICKEY'S MAINSAIL	DECK 3, FWD	9:30 AM - 11:00 PM
QUACKS	DECK 11, MID	10:00 AM - 4:00 PM
SEA TREASURES	DECK 3, FWD	9:30 AM - 11:00 PM
VISTA GALLERY	DECK 4, MID	10:00 AM - 10:00 PM
WHITE CAPS	DECK 3, FWD	9:30 AM - 11:00 PM
WHOZITS & WHATZITS	DECK 11, MID	10:00 AM - 4:00 PM

DINNER MENU

Animator's Palate: Captain's Gala
Enchanted Garden: Captain's Gala
Royal Court: Captain's Gala
Dining Times: 5:45 p.m. & 8:15 p.m.

DRINK OF THE DAY

High Tide (Alcoholic)
Passion Cream Freeze (Non Alcoholic)

WEATHER FORECAST

Today: Partly Cloudy
High: 70°F/21°C
Tomorrow: Partly Cloudy
High: 68°F/20°C

Evening Attire: Semi Formal

DINING & LOUNGES

BREAKFAST

CABANAS CONTINENTAL	DECK 11, AFT	7:00 AM - 7:30 AM
CABANAS	DECK 11, AFT	7:30 AM - 11:30 AM
ENCHANTED GARDEN	DECK 2, MID	8:30 AM - 10:45 AM
ROYAL COURT	DECK 3, MID	8:00 AM - 9:30 AM

LUNCH

CABANAS	DECK 11, AFT	11:30 AM - 2:00 PM
FILMORE'S FAVORITES	DECK 11, MID	11:00 AM - 6:00 PM
LUIGI'S PIZZA	DECK 11, MID	11:00 AM - 6:00 PM
ROYAL COURT	DECK 3, MID	12:00 PM - 1:30 PM
TOW MATER'S GRILL	DECK 11, MID	11:00 AM - 11:00 PM

DINNER

ANIMATOR'S PALATE	DECK 3, AFT	5:45 PM & 8:15 PM
ENCHANTED GARDEN	DECK 2, MID	5:45 PM & 8:15 PM
ROYAL COURT	DECK 3, MID	5:45 PM & 8:15 PM
CABANAS TABLE SERVICE	DECK 11, AFT	6:30 PM - 8:30 PM
PALO (18+) (RESERVATIONS REQ. & NOW FEE APPLIES)	DECK 12, AFT	6:00 PM - 8:30 PM
REMY (18+) (RESERVATIONS REQ. & NOW FEE APPLIES)	DECK 12, AFT	6:00 PM - 8:30 PM

LATE NIGHT SHACKS

LA PIAZZA (18+)	DECK 4, AFT	10:45 PM - 11:45 PM
LUIGI'S PIZZA	DECK 11, MID	9:30 PM - 12:30 AM

ADDED FEATURES

BEVERAGE STATION	DECK 11, MID	24 HOURS
EYE SCREAM	DECK 11, MID	11:00 AM - 11:00 PM
ROOM SERVICE	DIAL 0	24 HOURS

ENTERTAINMENT - LOUNGES - BARS

Adults must be 21 and older to consume alcoholic beverages.

BON VOYAGE	DECK 3, MID	10:00 AM - 11:00 PM
COVE BAR (18+)	DECK 11, FWD	10:00 AM - 11:00 PM
COVE CAFE (18+)	DECK 11, FWD	7:00 AM - 12:00 MID
CURRENTS (18+)	DECK 13, FWD	10:00 AM - 11:00 PM
D LOUNGE	DECK 4, MID	SHOWTIMES
FROZONE TREATS	DECK 11, MID	10:00 AM - 10:00 PM
LA PIAZZA (18+ AFTER 9:00 P.M.)	DECK 4, AFT	3:00 PM - 12:00 MID
MERIDIAN (18+)	DECK 12, AFT	10:00 AM - 12:00 MID
O'GILLS PUB (18+ AFTER 9:00 PM)	DECK 4, AFT	12:00 PM - 12:00 MID
OOH LA LA (18+)	DECK 4, AFT	5:30 PM - 12:00 MID
OUTLOOK	DECK 14, MID	SUNSET TIMES
SKYLINE (18+)	DECK 4, AFT	5:30 PM - 12:30 PM
THE TUBE (18+ AFTER 9:00 P.M.)	DECK 4, AFT	9:30 PM - 2:00 AM
VISTA CAFE	DECK 4, MID	7:00 AM - 10:30 PM
WAVES	DECK 12, AFT	10:00 AM - 6:00 PM

Consumers who order raw or partially cooked, ready-to-eat food of animal origin, are hereby informed that the food is not sufficiently cooked to ensure its safety.

PRINCESS GATHERING

Don't miss your chance to see this Royal gathering today in the Lobby Atrium and don't forget your camera to capture those magical moments.

11:00 a.m.

CHARACTER DANCE PARTY

Put your dancing shoes on and join some of your favorite Disney Friends in the Lobby Atrium, Deck 3, Midship for fun and dancing.

1:15 p.m.

