

PERSONAL NAVIGATOR



WEDNESDAY, MARCH 12, 2014

Sunrise: 6:30 a.m. Sunset: 6:28 p.m.

Evening Attire: Cruise Casual

All Ashore: 7:45 a.m.

All Aboard: 4:00 p.m.

Today: Sunny High: 74°F/23°C

Tomorrow: Partly Cloudy High: 70°F/21°C

ST. THOMAS

SHOWTIME

FEATURING THE MAGIC & ILLUSION OF

JASON BISHOP

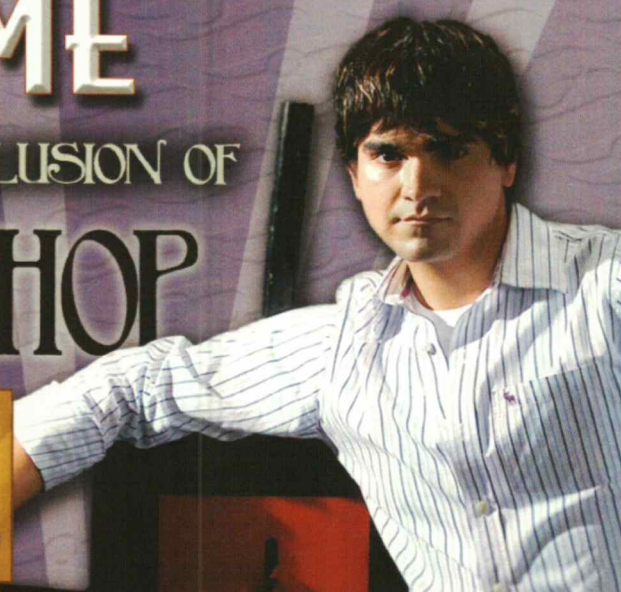
WALT DISNEY THEATRE

Deck 3 & 4, Forward

6:15 p.m. & 8:30 p.m.



As a courtesy to all Guests, we kindly advise that the saving of seats is **not** permitted in the Walt Disney Theatre.



St. Thomas Port Information

Once largely occupied by Dutch-owned sugar cane plantations and pirates of the Caribbean, St. Thomas and St. John of the U.S. Virgin Islands are some of the most popular tropical tourist destinations in the world. A destination that boasts so many sites for sport, relaxation and leisure has a culture that is still influenced in ways by its agricultural and native past.

Two-thirds of the island of St. John, a short ferry ride from St. Thomas, is a National Park. Not only is this part of the island the most beautiful it is also the most serene, surrounded by shimmering bays and beaches.

A place so celebrated today for its pristine tranquility and peaceful way of life was—for 150 years—a notorious pirate post before the islands were conquered by the Dutch West Indian Company.

The islands have seen a steady rise in tourism since, and today, there is an entire world of leisure and adventure to explore on St. Thomas and St. John.

DOCKING

The ship docks at Havensight Mall Dock, which is also known as West Indian Company Dock.



FAMILY DANCE PARTY

Bring the family out to this interactive dance party featuring The Three Amigos. We will party with Donald Duck, learn Salsa, Merengue and have a Latin good time!

D Lounge,
Deck 4, Midship,
10:15 p.m.

Don't Miss:

Art of The Theme Show Tour (18+)

Pre-Book at Guest Services, Deck 3, Midship

Join us on a guided ship tour and discover the key ingredients that make the Disney Fantasy cruise ship one-of-a-kind.

Disney Animation: Persistence of Vision

D Lounge, Deck 4, Midship - 4:00 p.m.

Go behind the scenes at Walt Disney Animation Studios and learn the principles that make animation work, and try your hand at creating your own easy animation demonstration in this fun and fascinating enrichment program.

ESPN Dream Team Draft Day - Basketball (18+)

O'Gills Pub, Deck 4, Aft - 5:30 p.m.

Join the "Commissioner" and engage in this interactive fantasy basketball draft unlike anything you've ever seen! Can YOU draft the greatest basketball team of All-Time?

80's Music Challenge (18+)

The Tube, Deck 4, Aft - 10:30 p.m.

"Moon Walk" back to the 80's as we put your musical knowledge of the decade to the test.

Disney Cruise Line



IMPORTANT INFORMATION

Please check your tour tickets for meeting times and locations.
Visit the Port Adventures Desk, Deck 5, Midship for any questions.

DINNER MENU

Animator's Palate : Prince and Princess Menu
Enchanted Garden : Prince and Princess Menu
Royal Court : Prince and Princess Menu

DRINK OF THE DAY

Paradise (Alcoholic)
Cranberry No-Jito
(Non Alcoholic)

IMPORTANT NUMBERS

Fire/Security: 7-3001
Medical Emergency: 7-3000
Health Center: 7-1923

FUN FOR ALL AGES HIGHLIGHTS

DISNEY TRIVIA

La Piazza, Deck 4, Aft - 3:15 p.m.

Navigate your way through a round of questions to test how much you really know about Disney.



DISNEY ANIMATION: PERSISTENCE OF VISION

D Lounge, Deck 4, Midship - 4:00 p.m.

Go behind the scenes at Walt Disney Animation Studios and learn the principles that make animation work, and try your hand at creating your own easy animation demonstration in this fun and fascinating enrichment program.

JAM FEST AT SEA

Deck Stage, Deck 11, Midship - 4:45 p.m.

Are you ready for a jammin' good time? Imagine your favorite Disney Channel music and stars coming together to create the biggest Jam Fest at Sea! Great music, cool music videos and hot dance moves that are off the charts. Come out to be part of the action!

PLAYHOUSE D LOUNGE

D Lounge, Deck 4, Midship - 5:00 p.m.

Calling our youngest of cruisers! Here is a special playtime that is just for you. Come meet new friends; and join in on the fun as your Cruise Staff team takes you through interactive activities made just for you!

SO YOU THINK YOU KNOW YOUR FAMILY?

The Tube, Deck 4, Aft - 7:30 p.m.

This fun-filled family game show is always full of surprises. Find out how well you know, or don't know your family!

FAMILY SUPERSTAR KARAOKE

D Lounge, Deck 4, Midship - 9:30 p.m. & 11:15 p.m.

Join your Cruise Staff in D Lounge tonight and sing along to your favorite song - fun for everyone.



SALUDOS AMIGOS FIESTA

D Lounge, Deck 4, Midship - 10:15 p.m.

Come see what Donald and his friends are up to this time. Bring the family out to this interactive dance party featuring fun Latin music! Your family will learn to Salsa, Merengue and just have a Latin good time!

ADULT ACTIVITY HIGHLIGHTS

SENSES SPA FITNESS CLASSES & SEMINARS

Sunrise Stretch - Donald's Pool - 7:00 a.m.

Fab Abs - Donald's Pool - 7:30 a.m.; Senses Fitness Center - 5:00 p.m.

Body Sculpt Boot Camp (Nom. Fee) - Senses Fitness Center - 8:00 a.m.

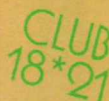
Pilates - Senses Fitness Center - 4:00 p.m.

Complimentary Footprint Analysis - Senses Spa & Salon - 5:00 p.m.



CLUB 18*21 - ARR-CADE SOCIAL

Arr-cade, Deck 11, Aft - 5:00 p.m.



CLUB 18*21 - MIXER

The Tube, Deck 4, Aft - 9:45 p.m.

Come to join fellow cruisers your own age at our exclusive Club 18*21 event.

PUB QUIZ

O'Gills Pub, Deck 4, Aft - 1:00 p.m.



Join us as we test your knowledge against your fellow Guests at our Pub Quiz challenge.



ESPN DREAM TEAM DRAFT DAY - BASKETBALL

O'Gills Pub, Deck 4, Aft - 5:30 p.m.

Join the "Commissioner" and engage in this interactive fantasy basketball draft unlike anything you've ever seen! Can YOU draft the greatest basketball team of All-Time?

POP!

The Tube, Deck 4, Aft - 10:00 p.m.



Have you been told you are full of useless information about pop culture? If the answer is "Yes", then you have what it takes to play the high energy game show all about the world of Pop!

80'S/90'S REMIX WITH CLUB DJ OLLIE

The Tube, Deck 4, Aft - 11:30 p.m.

Join Club DJ Ollie, as he spins the tunes and remix the 80's & 90's!



DOUBLE UP JACKPOT BINGO

D Lounge, Deck 4, Midship

Card Sales - 7:15 p.m.

Game Starts - 7:30 p.m.

Special double up session: All electronic cards purchased will be doubled! The snowball jackpot continues to grow and could be won today!

YOUTH ACTIVITY HIGHLIGHTS

DINE & PLAY

A convenience for families dining at 8:15 p.m., our Youth Activities Counselors will be available at 9:15 p.m. at the entrance of Royal Court, Enchanted Garden and Animator's Palate dining rooms to bring registered children to join the fun in the Youth Activity areas.



Deck 5, Midship (7-1440)
(3-12 years old) 10:00 a.m. - 11:00 p.m.

JOURNEY TO NEVERLAND

11:00 a.m.

Join Peter Pan as he takes you on an adventure on the Magic Playfloor.

PLUTO'S PAJAMA PARTY

8:30 p.m.

Bring the little ones in their pajamas but there will be anything but sleep when Pluto and friends host the ultimate slumber party!



Deck 5, Midship (7-1445)
(3-12 years old) 7:30 a.m. - 12:00 mid

GAGA BALL

11:00 a.m. & 8:30 p.m.

Come take part in this great game as you try to outlast your opponents.

PICTURE THIS

7:30 p.m.

Create your own professional picture frame and take a photo with a special guest.



Deck 13, Midship (7-9743)
(11-14 years old) 9:00 a.m. - 1:00 a.m.

SCAVENGER HUNT

1:00 p.m.

A little friendly competition exploring the ship; see if you can solve the clues and finish first.

GHOST VOYAGERS

10:15 p.m.

The ship has come upon some mysterious waters and strange things are afoot. Join a paranormal expert to help investigate the area and track down any evidence of ghostly beings on the ship.



Entrance on Deck 4, Forward (7-9418)
(14-17 years old) 11:00 a.m. - 2:00 a.m.

ICE CREAM SOCIAL

1:00 p.m.

I scream, you scream, we all scream for ice cream! Make your own frosty treat with your Counselors.

THAT'S HILARIOUS

9:00 p.m.

Ever wanted to show off your comedy skills? Then be a part of the cast for the crazy improv show "That's Hilarious" and put on a live show for your friends.

BUENA VISTA THEATRE

Deck 4 & 5, Midship
Today's Movies

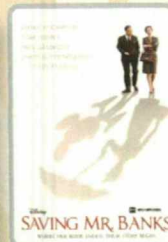
SING-ALONG

OC - Open Captioning

DOLBY 3D



9:45 a.m.
Duration:
1 hr 48 mins
Rating: PG



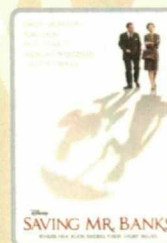
12:00 p.m.
Duration:
2 hrs 5 mins
Rating: PG-13



2:45 p.m.
Duration:
1 hr 48 mins
Rating: PG



5:00 p.m. & 8:00 p.m.
Duration: 2 hrs 29 mins
Rating: PG-13



11:00 p.m.
Duration: 2 hrs 5 mins
Rating: PG-13

FAMILY KARAOKE



Be a singing sensation when you and your family take to the stage and sing along to your favorite song.

D Lounge,
Deck 4, Midship,
9:30 p.m. & 11:15 p.m.



Hop onboard and hit the dance floor as we take you on a ride through the charts, partying it up to some of the hottest British hits!

The Tube (18+),
Deck 4, Aft,
11:00 p.m.

YOUTH ACTIVITIES OPEN HOUSE

Open House is an opportunity for all to come and participate in a variety of exciting activities and free time in the Oceaneer Club, Oceaneer Lab, It's A Small World Nursery, Vibe and Edge throughout the cruise. During these times secured programming will still be offered in the other venue for those looking to check their children into care.

Disney's Oceaneer Club: 10:00 a.m. - 12:00 p.m.
Disney's Oceaneer Lab: 3:15 p.m. - 5:00 p.m.
Vibe: 11:00 a.m. - 12:00 p.m. & 6:30 p.m. - 8:30 p.m.
Edge: 9:00 a.m. - 11:00 a.m. & 5:00 p.m. - 6:30 p.m.

MORE TO ENJOY WHILE ONBOARD

MORE MAGIC IN THE MEDITERRANEAN

Set sail for Europe in summer 2014! Choose from an array of Mediterranean getaways departing from Barcelona or Venice, including a 12-night cruise that sails to the Greek Isles, Turkey and Malta. Begin your journey today! Visit the Onboard Sales Desk to learn more about our special onboard booking offer.

PORT AND SHOPPING INFORMATION

St. Thomas is the most famous shopping port in the Caribbean. Take advantage of the Tax & Duty Free savings and meet your Port Shopping Guides Marissa & Johan in Diamonds International #1a Downtown between 11:00 a.m. - 12:00 p.m. Make sure to pick up your shopping coupons on the gangway!

DISNEY VACATION CLUB® GROUP PREVIEW

Want to learn more about taking magical vacations year after year? Please see a Disney Vacation Club representative on Deck 4, Midship, or call 7-2805 from your stateroom phone for more information about our interactive group presentation.

ONBOARD AIRLINE CHECK IN

If you would like to have your boarding passes printed for you onboard and have your luggage taken to the airport for you, register before Wednesday. If you have a Disney Cruise Line airport transfer to Orlando International Airport and fly with one of the participating airlines, stop at Guest Services, Deck 3, Midship to register.

Connect@Sea

We are now offering a NEW and improved Internet service to stay connected on your cruise like no other in the industry! Internet packages range from \$0.09 per MB - \$29.00 (1000 MB package) limited time promotional offer. For more information contact your Connect@Sea Expert or Guest Services onboard.

FREE ON DEMAND TV

Watch Disney movies, Hollywood features and even captioned content, plus much more "On Demand" for FREE in the comfort of your stateroom! Bookmark your movie and come back to watch it later. Press MENU on your stateroom television remote control, and follow the prompts.



SENSES
SPA & SALON

SALON TASTER SPECIAL

- Scalp Massage
- European Facial
- Hand Treatment
- Sunglow Makeover
- Conditioning Hair Treatment
- Eye Collagen Treatment

- Foot & Ankle Massage
- Neck & Shoulder Massage

Three for 99.00
Five for 119.00
All Eight for 139.00

TODAY'S SHOPPING SPECIAL

Stop by White Caps to try on the world's most memorable white diamond pieces and commemorate your cruise.

White Caps, Deck 3, Forward.

WHITECAPS

Sophia Fiori



Shutters

GET THE PICTURE

Order a Get the Picture! photo disc and share your vacation memories digitally! No need to decide which photos to take home now, select your photos from the comfort of your home.

Print, send and share your photos easily!

Hurry as supplies are limited.

**Terms and conditions apply. Photos captured on your vacation are only available for purchase during this cruise.*

Disney Cruise Line
PORT ADVENTURES

The Port Adventures Desk is open this morning for your last minute St. Thomas reservations. Let us take care of everything from beach breaks, St. Thomas Island tours and sailing adventures to neighboring Islands. Don't forget to reserve space for the trip to St. John and its beautiful Trunk Bay beach. For the more adventurous, join us for the Screamin' Eagle or one of the many Catamaran Sail and Snorkel excursions. Your friendly Port Adventures team is located on Deck 5, Midship.

SHOPPING

GREAT DEALS WHEN SHOPPING ONBOARD

Visit White Caps on Deck 3, Forward, for a wide variety of fine jewelry and brand name timepieces such as Ernst Benz and more! For a limited time, receive 25% off the ticketed price of Dior Watches and/or receive 25% off the ticketed price of Dinero Jewelry. Discount taken at register. Offer not valid on previous purchases. No other discounts apply. Offer valid while supplies last. Offer subject to change without notice.

ROMERO BRITTO ART AT THE VISTA GALLERY

Stop by the Vista Gallery to view original artwork by popular artists such as Romero Britto. Britto's whimsical and colorful pieces feature some of your favorite Disney characters in a style that only Britto can create. Deck 4, Midship.

NEW DISNEY CRUISE LINE COMPASS COLLECTION MERCHANDISE

Commemorate your Disney cruise with the new nautical themed Disney Cruise Line merchandise from the Compass collection. Step into Sea Treasures, Deck 3 Forward, for the wide selection of Compass items including hats, t-shirts, and a fleece blanket.

GREAT REASON TO SHOP ONBOARD!

Stop by White Caps, Deck 3 Forward, and receive a Disney Cruise Line® Pillow for \$16.95 with any merchandise purchase of \$30.00 or more and/or a Disney Cruise Line® Throw for \$24.95 with any merchandise purchase of \$40.00 or more. While supplies last. Offer not valid on previous purchases. Offer subject to change without notice.

SHINOLA WATCHES

Available onboard at White Caps, Shinola watches are created using advanced technology with meticulous hand-assembly. Deck 3, Forward.

Due to port regulations, when the ship is docked, the stores will remain closed.

DF0103 03-12-2014 ©DISNEY

IMPORTANT INFORMATION

Security Notice

All Guests (including children) who wish to disembark the ship are required to present their Key to the World card at the gangway. A photo ID is also required for those Guests who are 18 years of age or older. Guests under the age of 18 are required to have a parent, guardian or other responsible adult sign an authorization form at the Guest Service Desk if they wish to go ashore unaccompanied or with any adult from another stateroom.

Sunscreen/Insect Repellent Advisory
Use sunscreen first and protect against mosquito borne illnesses by applying insect repellent on top of sunscreen when going ashore.

Cold and Flu Reminder

Please wash hands frequently and thoroughly, particularly before meals. Contact the Health Center by dialing 7-1923, should anyone in your party become ill.

Corridor Quiet Hours

As a courtesy to all our Guests, please recognize quiet hallway hours from 10:00 p.m. to 8:00 a.m.

Inclement Weather

For the safety of all Guests, outdoor events may be changed due to unforeseen weather conditions.

Environmental Message

With Disney's commitment to the Environment, please refrain from throwing anything over the Ship's side. Thank you!

No Reserved Seats Policy

As a courtesy to all our Guests, we kindly advise that the saving of seats is not permitted in the Walt Disney Theatre, and the saving of the sun loungers is not permitted on Deck 11, 12, and 13. Items left unattended will be returned to lost and found at Guest Services, Deck 3 Midship.

Smoking

For the comfort of our guests, the following areas are designated as smoking areas:
• Deck 13, forward, port side by Currents
• Deck 12, aft, port side outdoor area that is accessible through the Meridian Lounge
• Deck 4, aft, port side from 6:00 p.m. to 6:00 a.m. only (all of Deck 4 is non-smoking from 6:00 a.m. to 6:00 p.m.) Smoking is prohibited inside all guest staterooms and on stateroom verandahs. Guest found smoking in their staterooms or on their verandahs will be charged a \$250 stateroom recovery fee.

Walt Disney Theatre

Theatrical performances may use artificial fog, strobe lights, pyrotechnics and other special effects. For the safety of our performers and the comfort of those around you, the use of any photography, video recording device or any electronic equipment is prohibited.

Verandah Safety

Please do not leave any combustible materials on your balcony when not present in your stateroom for safety reasons.

Morning	8:30	8:45	9:00	9:15	9:30	9:45	10:00	10:15	10:30	10:45	11:00	11:15	11:30	11:45	12:00	12:15	12:30	12:45	1:00	1:15	1:30					
FUNNEL VISION	A Bug's Life (G) Funnel Vision								Monsters, Inc. (G) Funnel Vision								Toy Story (G) Funnel Vision									
BUENA VISTA THEATRE					Frozen: Sing-A-Long (PG) Duration: 1 Hour 48 Minutes								Saving Mr. Banks (PG-13) - Open Captioning Duration: 2 Hours 5 Minutes													
CHARACTER	Please refer to Character Board in Lobby Atrium for today's Character Appearances Don't forget your Camera to capture those Magical Moments!																									
FUN FOR ALL AGES	Port Adventures - Please check your tickets for meeting times and locations										Youth Activities Open House Vibe															
	Youth Activities Open House Edge										Midship Detective Agency Deck 2 & 5, Midship															
	Youth Activities Open House Oceaneer Club																									
ADULTS	Friends of Bill W. Outlook																				Pub Quiz O'Gills Pub					
VIBE 14-17 YEARS OLD											Youth Activities Open House				Teen Choice				Ice Cream Social							
EDGE 11-14 YEARS OLD	Youth Activities Open House										Bingo				Wii Challenge				Scavenger Hunt							
OCEANEER LAB 3-12 YEARS OLD	Game Challenge						Pathfinders				Craft Corner										Animation Cells					
	Human Bingo										GAGA Ball										Float Fun Trivia					
OCEANEER CLUB 3-12 YEARS OLD											Youth Activities Open House								Lunch							
											Magic PlayFloor				Journey to Neverland								Magic PlayFloor			
Afternoon	1:45	2:00	2:15	2:30	2:45	3:00	3:15	3:30	3:45	4:00	4:15	4:30	4:45	5:00	5:15	5:30	5:45	6:00	6:15	6:30	6:45					
FUNNEL VISION					Cars (G) Funnel Vision								Jam Fest at Sea Funnel Vision								Toy Story 2 (G) Funnel Vision					
BUENA VISTA THEATRE					Frozen (PG) Duration: 1 Hour 48 Minutes												The Lone Ranger (PG-13) Duration: 2 Hours 29 Minutes									
CHARACTERS											Mickey Dk 4, Balcony		Tinker Bell Lobby Atrium (V)		Pluto Lobby Atrium (P)		Mickey Lobby Atrium (H)		Peter Pan Lobby Atrium (P)		Stitch Preludes					
															Pinocchio Dk 4, Balcony		Hook & Smees Dk 4, Balcony		Cinderella Lobby Atrium (H)		Aladdin & Genie Dk 4, Balcony					
FUN FOR ALL AGES			Xbox® Kinect™ Just Dance Challenge O'Gills Pub								Disney Trivia La Piazza		Disney ANIMATION Persistence of Vision D Lounge				Playhouse D Lounge D Lounge						The Magic & Illusion of JASON BISHOP Walt Disney Theatre			
	Midship Detective Agency Deck 2 & 5, Midship														Live Guitar with Tony Delaney Deck 12, Forward		Deck Stage		Live Music with Greg Alcock La Piazza						Family Crafts D Lounge	
ADULTS											Art of The Theme Show Tour Pre-Book at Guest Services								Club 18*21 - Am-cade Social Am-cade		ESPN Dream Team Draft Day - Basketball O'Gills Pub					
VIBE 14-17 YEARS OLD	Matinee Movie										Disney Animation: Creating a Character				Craft Corner				Fifa Challenge				Open House			
EDGE 11-14 YEARS OLD	ESPN Dream Team Draft Day - Baseball		Craft Corner		Crowning of the Couch Potato				Sports Deck Fun								Youth Activities Open House									
OCEANEER LAB 3-12 YEARS OLD	Animation Cells						Youth Activities Open House																Pictionary			
	Magic Show		Marshmallow Olympics						Super Sloppy Science												Four Square					
OCEANEER CLUB 3-12 YEARS OLD			Game Challenge												Game Challenge								Craft Corner			
	Craft Corner						Scavenger Hunt								Craft Corner								Cruisin' with Crush			
Evening	7:00	7:15	7:30	7:45	8:00	8:15	8:30	8:45	9:00	9:15	9:30	9:45	10:00	10:15	10:30	10:45	11:00	11:15	11:30	11:45	12:00					
FUNNEL VISION					Up (PG) Funnel Vision												Old Dogs (PG) Funnel Vision									
BUENA VISTA THEATRE					The Lone Ranger (PG-13) Duration: 2 Hours 29 Minutes																Saving Mr. Banks (PG-13) Duration: 2 Hours 5 Minutes					
CHARACTERS	Hook & Smees Dk 4, Balcony		Pinocchio Preludes				Aladdin & Genie Dk 4, Balcony				Hook & Smees Dk 4, Balcony		Belle Dk 4, Balcony				Stitch Preludes		Cinderella Lobby Atrium (H)		Goofy Lobby Atrium (H)					
	Mickey Lobby Atrium (H)		Tinker Bell Lobby Atrium (V)		Minnie Lobby Atrium (H)		Stitch Preludes				Stitch Preludes		Cinderella Lobby Atrium (H)		Goofy Lobby Atrium (H)											
FUN FOR ALL AGES	Bingo Pre Sales		Double Up Jackpot BINGO D Lounge				The Magic & Illusion of JASON BISHOP Walt Disney Theatre								Family Superstar Karaoke D Lounge		Viva Fiesta D Lounge		Family Superstar Karaoke D Lounge							
	Family Dance Party The Tube		So You Think You Know Your Family? The Tube				Family Crafts D Lounge								Live Music with Ash & Mike Lobby Atrium		Live Music with Greg Alcock Lobby Atrium									
ADULTS	Live Music with Greg Alcock La Piazza														DJ Requests The Tube		80's Music Challenge The Tube		80's/90's Remix with Club DJ Ollie The Tube							
VIBE 14-17 YEARS OLD	Youth Activities Open House														That's Hilarious								Mix and Match			
EDGE 11-14 YEARS OLD	Anyone Can Cook Cupcakes				Chillin' in Edge				Tween Choice								Ghost Voyagers				Gender Wars				Karaoke	
OCEANEER LAB 3-12 YEARS OLD	Face Paint Time								Craft Corner																	
					Picture This				GAGA Ball								Super Sloppy Science									
OCEANEER CLUB 3-12 YEARS OLD	Once Upon a Time																Bingo									
											Pluto's Pajama Party															

Symbol for activities that will be repeated during the cruise



Youth Activities Open House



FOLD

Fold along the dotted lines and take me with you so you don't miss any of the fun!

FOLD

IN THE SPOTLIGHT SERIES
SOLVE IT SERIES



CLUBHOUSE SERIES



CREATE & REPEAT SERIES



STORYBOOK SERIES



WEDNESDAY, MARCH 12, 2014 - ST. THOMAS

BUENA VISTA THEATRE

Deck 4 & 5, Midship

Disney Digital 3D - Open Captioning

DOLBY 3D



9:45 a.m. Duration: 1 hr 48 mins Rating: PG	12:00 p.m. Duration: 2 hrs 5 mins Rating: PG-13	2:45 p.m. Duration: 1 hr 48 mins Rating: PG	5:00 & 8:00 p.m. Duration: 2 hrs 29 mins Rating: PG-13	11:00 p.m. Duration: 2 hrs 5 mins Rating: PG-13
--	--	--	---	--

Character Appearances

MICKEY MOUSE

Deck 4, Balcony - 4:15 p.m.
Lobby Atrium (H)
5:00 p.m. & 7:15 p.m.

TINKER BELL

Lobby Atrium (V) - 4:30 p.m.,
5:30 p.m., 7:30 p.m. & 9:30 p.m.

PLUTO

Lobby Atrium (P) - 4:45 p.m.

PINOCCHIO

Deck 4, Balcony - 4:45 p.m.
Preludes - 7:45 p.m. & 10:00 p.m.

CAPTAIN HOOK & MR SMEE

Deck 4, Balcony - 5:15 p.m.,
7:15 p.m. & 9:30 p.m.

PETER PAN

Lobby Atrium (P) - 5:15 p.m.

STITCH

Preludes - 5:30 p.m.,
8:15 p.m. & 9:30 p.m.

CINDERELLA

Lobby Atrium
5:30 p.m. & 9:45 p.m.

CHIP & DALE

Lobby Atrium (H) - 5:30 p.m.

ALADDIN & GENIE

Deck 4, Balcony
5:45 p.m. & 8:15 p.m.
Lobby Atrium (P) - 10:00 p.m.

SNOW WHITE & DOPEY

Lobby Atrium (P)
5:45 p.m. & 9:30 p.m.
Deck 4, Balcony - 7:45 p.m.

MINNIE MOUSE

Lobby Atrium (H) - 7:45 p.m.

DONALD DUCK

Lobby Atrium (H) - 9:30 p.m.

GOOFEY

Lobby Atrium (H) - 10:00 p.m.

BELLE

Deck 4, Balcony - 10:00 p.m.



(H) Hallway - (S) Starboard Side - (P) Port Side - (V) Vestibule

For details of daily Disney character appearances, refer to the character line in your Navigator Grid or the digital character board in the Lobby Atrium.

YOUTH ACTIVITIES THEMED EXPERIENCES

CLUBHOUSE SERIES
focuses on movement and features content which appeals to younger children.

JUMP UP! SERIES
includes large group games & movement-oriented activities.

WIN THE SPOTLIGHT SERIES
focuses on children's stage presence with lots of activities and enthusiasm.

STORYBOOK SERIES
is designed with a strong connection to the Disney classic stories.

CREATE & INVENT SERIES
will have a tactile focus allowing children to create and admire their work.

SOLVE IT! SERIES
are less active, but will challenge children with problem/solutions-based activities.

YOUTH ACTIVITIES OPEN HOUSE

A non-secured program with activities for families, adults and children of all ages to enjoy together.

SHIP DIRECTORY

YOUTH ACTIVITIES

DISNEY'S OCEANEER CLUB	DECK 5, MID	10:00 AM - 11:00 PM
DISNEY'S OCEANEER LAB	DECK 5, MID	7:30 AM - 12:00 MID
EDGE	DECK 13, MID	9:00 AM - 1:00 AM
VIBE	DECK 4, FWD	11:00 AM - 2:00 AM
IT'S A SMALL WORLD NURSERY	DECK 5, MID	7:30 AM - 11:00 PM

POOLS & MORE

* Children under 12 must have adult supervision in pool areas.

AQUADUCK	DECK 12, MID	9:00 AM - 10:00 PM
AQUALAB	DECK 12, AFT	1:00 PM - 7:00 PM
DONALD'S POOL	DECK 11, MID	9:00 AM - 6:00 PM 8:00 PM - 10:00 PM
MICKEY'S POOL	DECK 11, MID	6:00 AM - 11:00 PM
MICKEY'S SLIDE	DECK 11, MID	9:00 AM - 6:00 PM
NEMO'S REEF	DECK 11, MID	9:00 AM - 6:00 PM
QUIET COVE POOL (18+)	DECK 11, FWD	6:00 AM - 12:00 MID
SATELLITE FALLS	DECK 13, FWD	6:00 AM - 8:00 PM

RECREATION

GOLF/SPORTS SIMULATORS	DECK 13, AFT	9:00 AM - 6:00 PM
GOOFEY GOLF	DECK 13, AFT	8:00 AM - 10:00 PM
GOOFEY'S SPORTS DECK	DECK 13, AFT	8:00 AM - 6:00 PM
MIDSHIP DETECTIVE AGENCY	DECKS 2 & 5, MID	9:00 AM - 10:00 PM
PORT ADVENTURES DESK	DECK 5, MID	7:30 AM - 11:00 AM
SENSES FITNESS CENTER (18+)	DECK 11, FWD	6:30 AM - 10:00 PM

GENERAL INFORMATION

ARR-CADE	DECK 11, AFT	24 HOURS
DISNEY VACATION CLUB	DECK 4, MID	5:00 PM - 10:00 PM
GUEST SERVICES	DECK 3, MID	24 HOURS
MEDICAL HEALTH CENTER	DECK 1, FWD	9:30 AM - 11:00 AM 4:30 PM - 7:00 PM
ONBOARD SALES DESK	DECK 4, MID	9:00 AM - 10:00 AM 4:00 PM - 6:00 PM 7:30 PM - 10:00 PM
PORT & SHOPPING DESK	DECK 4, MID	7:30 PM - 8:30 PM
PRELUDES	DECK 3, FWD	5:45 PM - 6:30 PM 8:00 PM - 8:45 PM
SENSES SPA AND SALON	DECK 11, FWD	8:00 AM - 10:00 PM
SHUTTERS PHOTO GALLERY	DECK 4, MID	5:00 PM - 10:30 PM
SHUTTERS DIGITAL	DECK 4, MID	24 HOURS

SHOPPING

BIBBIDI BOBBIDI BOUTIQUE	DECK 5, MID	9:00 AM - 9:00 PM
MICKEY'S MAINSAIL	DECK 3, FWD	4:30 PM - 11:00 PM
QUACKS	DECK 11, MID	
SEA TREASURES	DECK 3, FWD	4:30 PM - 11:00 PM
VISTA GALLERY	DECK 4, MID	6:00 PM - 10:00 PM
WHITE CAPS	DECK 3, FWD	4:30 PM - 11:00 PM
WHOZITS & WHATZITS	DECK 11, MID	

DINNER MENU

Animator's Palate: Prince & Princess
Enchanted Garden: Prince & Princess
Royal Court: Prince & Princess
Dining Times: 5:45 p.m. & 8:15 p.m.

DRINK OF THE DAY

Paradise (Alcoholic)
Cranberry No-Lito (Non Alcoholic)

WEATHER FORECAST

Today: Sunny
High: 74°F/23°C
Tomorrow: Partly Cloudy
High: 70°F/21°C

Evening Attire: Cruise Casual

DINING & LOUNGES

BREAKFAST

CABANAS CONTINENTAL	DECK 11, AFT	6:15 AM - 6:45 AM
CABANAS	DECK 11, AFT	6:45 AM - 10:30 AM
ENCHANTED GARDEN	DECK 2, MID	7:45 AM - 9:45 AM
ROYAL COURT	DECK 3, MID	8:00 AM - 9:30 AM

LUNCH

CABANAS	DECK 11, AFT	12:00 PM - 2:15 PM
FILMORE'S FAVORITES	DECK 11, MID	11:00 AM - 6:00 PM
LUIGI'S PIZZA	DECK 11, MID	11:00 AM - 6:00 PM
ROYAL COURT	DECK 3, MID	12:00 PM - 1:30 PM
TOW MATER'S GRILL	DECK 11, MID	11:00 AM - 11:00 PM

DINNER

ANIMATOR'S PALATE	DECK 3, AFT	5:45 PM & 8:15 PM
ENCHANTED GARDEN	DECK 2, MID	5:45 PM & 8:15 PM
ROYAL COURT	DECK 3, MID	5:45 PM & 8:15 PM
CABANAS TABLE SERVICE	DECK 11, AFT	6:30 PM - 8:30 PM
PALO (18+) (RESERVATION REQ. & NOW FEE APPLIES)	DECK 12, AFT	6:00 PM - 8:30 PM
REMY (18+) (RESERVATION REQ. & NOW FEE APPLIES)	DECK 12, AFT	6:00 PM - 8:30 PM

LATE NIGHT SNACKS

LA PIAZZA (18+)	DECK 4, AFT	10:45 PM - 11:45 PM
LUIGI'S PIZZA	DECK 11, MID	9:30 PM - 12:30 AM

ADDED FEATURES

BEVERAGE STATION	DECK 11, MID	24 HOURS
EYE SCREAM	DECK 11, MID	11:00 AM - 11:00 PM
ROOM SERVICE	DIAL 0	24 HOURS

ENTERTAINMENT - LOUNGES - BARS

Adults must be 21 and older to consume alcoholic beverages.

BON VOYAGE	DECK 3, MID	2:00 PM - 11:30 PM
COVE BAR (18+)	DECK 11, FWD	11:00 AM - 11:00 PM
COVE CAFE (18+)	DECK 11, FWD	7:00 AM - 12:00 MID
CURRENTS (18+)	DECK 13, FWD	11:00 AM - 11:00 PM
D LOUNGE	DECK 4, MID	SHOWTIMES
FROZONE TREATS	DECK 11, MID	12:00 PM - 10:00 PM
LA PIAZZA (18+ AFTER 9:00 P.M.)	DECK 4, AFT	3:00 PM - 12:00 MID
MERIDIAN (18+)	DECK 12, AFT	12:00 PM - 12:00 MID
O'GILLS PUB (18+ AFTER 9:00 PM)	DECK 4, AFT	3:00 PM - 12:00 MID
OOH LA LA (18+)	DECK 4, AFT	5:00 PM - 12:00 MID
OUTLOOK	DECK 14, MID	SUNSET TIMES
SKYLINE (18+)	DECK 4, AFT	5:00 PM - 12:30 AM
THE TUBE (18+ AFTER 9:00 P.M.)	DECK 4, AFT	10:00 PM - 2:00 AM
VISTA CAFE	DECK 4, MID	7:00 AM - 10:30 PM
WAVES	DECK 12, AFT	1:00 PM - 6:00 PM

Consumers who order raw or partially cooked, ready-to-eat food of animal origin, are hereby informed that the food is not sufficiently cooked to ensure its safety.

Disney Cruise Line

PORT ADVENTURES

IMPORTANT INFORMATION

Please check your tour tickets for meeting times and locations.

Visit the Port Adventures Desk, Deck 5, Midship, for any questions.

All Ashore: Approx. 7:45 a.m.

All Aboard: 4:00 p.m.

SHIP'S AGENT IN ST. THOMAS

IMPORTANT NUMBERS

Virgin Port Services, 1001 Blackbeard's Hill,
St. Thomas, USVI 00802
Tel.: 340-775-1151, 305-608-1908

Fire/Security: 7-3001
Medical EMERGENCY: 7-3000
Health Center: 7-1923