

PERSONAL NAVIGATOR



MONDAY, MARCH 10, 2014

DAY AT SEA

Sunrise: 6:53 a.m. Sunset: 6:34 p.m.
Evening Attire: Cruise Casual

Today: Partly Sunny High: 76°F/24°C
Tomorrow: Partly Sunny High: 76°F/24°C



On the eve of their graduation, three best friends go on a magical journey down the wishing well. A host of Disney characters help them discover the connection between children who are becoming adults, and adults who stay in touch with being a kid at heart.

Walt Disney Theatre
Deck 3 & 4, Forward



3:00 p.m., 6:15 p.m. & 8:30 p.m.

As a courtesy to all Guests, we kindly advise that the saving of seats is **not** permitted in the Walt Disney Theatre.



Assistance available at the entrance to the Walt Disney Theatre 30 minutes prior to show time.



Disney FANTASY Fun Facts

The two huge mosaic walls based on the Disney-Pixar animated feature "Finding Nemo" are showcased in Cabanas casual-dining restaurant on Deck 11. Created for the Disney Fantasy by Italian artists, each wall is more than 25 feet wide and more than 8 feet high and contains approximately 194,500 tiles in 200 colors of hand-crafted Venetian enamel.

A team of nine artists created the mosaics based on Disney-Pixar designs depicting the underwater world of Australia's Great Barrier Reef and characters featured in the motion picture.

Point of Interest

On our voyage to St. Maarten, at approximately 11:00 p.m. this evening we will be passing Anegada Islands on the Starboard side.



FAMILY GAMESHOW

Bring the entire family and test your Disney knowledge in the high-tech interactive game show, Family Fusion.

D Lounge,
Deck 4, Midship,
7:30 p.m. & 10:15 p.m.

Don't Miss:

Art of The Theme Show Tour (18+)

Pre-Book at Guest Services, Deck 3, Midship

Join us on a guided ship tour and discover the key ingredients that make the Disney Fantasy cruise ship one-of-a-kind.

Disney Animation: Cartoon Physics

D Lounge, Deck 4, Midship - 9:45 a.m. & 12:00 p.m.

Go behind the scenes at Walt Disney Animation Studios and see how flat drawings and pencil lines can come to life through basic techniques such as "Stretch and Squash", and create your own "bouncing ball" animation exercise in this entertaining and fun enrichment program.

Chip-It Golf (12+)

Lobby Atrium, Deck 3, Midship - 3:15 p.m.

It's par for the course for our Guests 12 and older to compete on our special "greens" in this fun tournament.

The Quest (18+)

The Tube, Deck 4, Aft - 10:15 p.m.

Enjoy the wildest and wackiest scavenger team event on the seven seas!



Sport's Simulators

Digital sports simulators are available at Goofy's Sports Deck on Deck 13, Aft. This state-of-the-art virtual sports experience includes golf, basketball, baseball, hockey, football and soccer. Book now at the Port Adventures Desk, Deck 5, Midship.

DINNER MENU

Animator's Palate: Pacific Rim Cuisine
Enchanted Garden: Continental Market Cuisine
Royal Court: French Cuisine

DRINK OF THE DAY

Yellow Bird (Alcoholic)
Lava Smoothie (Non Alcoholic)

IMPORTANT NUMBERS

Fire/Security: 7-3001
Medical Emergency: 7-3000
Health Center: 7-1923

FUN FOR ALL AGES HIGHLIGHTS



JAKE & THE NEVERLAND PIRATES

D Lounge, Deck 4, Midship - 9:00 a.m.

A'Hooy there mates, Join us for an adventure in D Lounge with Jake and the Neverland Pirates.



DISNEY VACATION CLUB GROUP PREVIEW

The Tube, Deck 4, Aft - 12:00 p.m.

Want to learn more about taking magical vacations year after year? Please see a Disney Vacation Club representative on Deck 4, Midship, or call 7-2805 from your stateroom phone for more information about our interactive group presentation.



DISNEY CHANNEL ON DECK

Deck Stage, Deck 11, Midship - 12:30 p.m.

Don't change that channel! It's time for a Disney Channel afternoon poolside! Your cruise staff will host an exciting day of games and contests in between your favorite Disney Channel shows! So sit back, relax, and enjoy the sun!

DIAMOND AND GEMSTONE SEMINAR

The Tube, Deck 4, Aft - 2:00 p.m.

Join your Port and Shopping Guides, and become an educated shopper. They will teach you about the exotic gemstones found in the Caribbean. FREE Tanzanite Earrings for all who attend and a raffle to win a Gemstone Pendant!

PLAYHOUSE D LOUNGE

D Lounge, Deck 4, Midship - 5:15 p.m.

Calling our youngest of cruisers! Here is a special playtime that is just for you. Come meet new friends; and join in on the fun as your Cruise Staff team takes you through interactive activities made just for you!

FAMILY SUPERSTAR KARAOKE

D Lounge, Deck 4, Midship - 10:45 p.m.

Join your Cruise Staff in D Lounge tonight and sing along to your favorite song - fun for everyone.

ADULT ACTIVITY HIGHLIGHTS



SENSES SPA FITNESS CLASSES & SEMINARS

Sunrise Stretch - Donald's Pool - 7:00 a.m.

Fab Abs - Donald's Pool - 7:30 a.m.

Complimentary Footprint Analysis - Senses Spa & Salon - 8:00 a.m.

Body Sculpt Boot Camp (Nom. Fee) - Senses Fitness Center - 9:00 a.m.

Pamper Party - Senses Spa & Salon - 10:00 a.m.

How to Increase Your Metabolism - Senses Spa & Salon - 11:00 a.m.

Tongue & Pulse Analysis - Senses Spa & Salon - 1:15 p.m.

Back Pain Solutions - Senses Spa & Salon - 2:00 p.m.

Group Cycling - Senses Fitness Center - 4:00 p.m.

Pilates - Senses Fitness Center - 5:00 p.m.

Fitness Frenzy (13-17, Nom. Fee) - Senses Fitness Center - 7:00 p.m.

TASTING CLASSES

Chocolate & Liqueur Tasting (21+) - Ooh La La - 12:15 p.m.

Martini Tasting (21+) - Meridian - 1:00 p.m. & 3:00 p.m.

Mixology (21+) - Skyline - 2:00 p.m. & 4:00 p.m.

Tequila & Margarita Tasting (21+) - Ooh La La - 3:00 p.m. & 4:45 p.m.

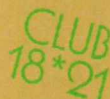
Whiskey Tasting (21+) - Cove Cafe - 10:00 p.m.

Cognac Tasting (21+) - Meridian - 10:30 p.m.

Please make reservations for tastings at Guest Services for a nominal fee. Tasting Seminars are only for Guests 21 and Older.

CLUB 18*21 - LUNCH

Royal Court, Deck 3, Midship - 12:15 p.m.



CLUB 18*21 - XBOX KINECT CHALLENGE

O'Gills Pub, Deck 4, Aft - 3:30 p.m.

CLUB 18*21 - MIXER

The Tube, Deck 4, Aft - 9:45 p.m.

MOVIE QUOTES TRIVIA

O'Gills Pub, Deck 4, Aft - 11:00 a.m.

"Life is like a box of Chocolates" Know the movie? Join your Cruise Staff and test your Movie Quote knowledge.



ANYONE CAN COOK - SEA BASS

D Lounge, Deck 4, Midship - 2:15 p.m.

From our galley to yours. Join our chefs as they show you how to prepare delicious dishes. Today's Menu - Sea Bass

\$5,000 MEGA JACKPOT BINGO

D Lounge, Deck 4, Midship

Card Sales - 10:45 a.m.

Game Starts - 11:00 a.m.

It's Big! It's \$5,000 MEGA Jackpot Bingo! Take home \$5,000 if you can cover your card in 46 numbers or less. If not, we carry on to play for the biggest cash prize of the session, plus today's Disney Vacation Club sponsored raffle includes a \$100 Onboard Credit and prize-packs.

SENSES SPA BINGO

D Lounge, Deck 4, Midship

Card Sales - 4:00 p.m.

Game Starts - 4:15 p.m.

Four CASH prizes to be won! Plus great spa prizes that will pamper you, including a mini facial and massages all courtesy of the Senses Spa and Salon. Serenity now!



YOUTH ACTIVITIES HIGHLIGHTS

DINE & PLAY

A convenience for families dining at 8:15 p.m., our Youth Activities Counselors will be available at 9:15 p.m. at the entrance of Royal Court, Enchanted Garden and Animator's Palate dining rooms to bring registered children to join the fun in the Youth Activity areas.



Deck 5, Midship (7-5864) 9:00 a.m. - 11:30 p.m.

OPEN HOUSE

8:00 a.m. - 9:00 a.m.

Your chance to see our toddler space, It's A Small World Nursery.



Deck 5, Midship (7-1440) 9:00 a.m. - 12:00 mid
(3-12 years old)

MICKEY'S PUZZLE PLAYTIME

1:15 p.m.

Come and Play with Mickey & friends as they share their favorite games, puzzles and dances!

BIG TOP FUN FEST!

7:30 p.m.

It's the greatest show on Earth. Come re-discover the circus Disney style with clowns, jugglers and classic Disney cartoons.



Deck 5, Midship (7-1445) 9:00 a.m. - 12:00 mid
(3-12 years old)

MAGIC PLAYFLOOR

9:30 a.m. & 11:15 p.m.

Explore the latest technology of the Oceaneer Lab Magic PlayFloor.

ANYONE CAN COOK: CUPCAKES

7:15 p.m.

Anyone can cook as we work together to create some of our favorite treats. From our galley to yours; join our chef as they show you how to create cupcakes!



Deck 13, Midship (7-9743) 9:00 a.m. - 1:00 a.m.
(11-14 years old)

ANYONE CAN COOK: PIZZA

3:00 p.m.

Anyone can cook as we work together to create some of our favorite treats. From our galley to yours; join our chef as they show to create pizza!

PICTURE THIS

9:00 p.m.

Create your own professional picture frame and take a photo with a special guest.



Entrance on Deck 4, Forward (7-9418) 9:00 a.m. - 2:00 a.m.
(14-17 years old)

ESPN DREAM TEAM DRAFT DAY - BASEBALL

2:30 p.m.

Play ball! Join the "Commissioner" and engage in this interactive fantasy baseball draft unlike anything you've ever seen! Can YOU draft the greatest baseball team of All-Time?

PUMP IT UP

9:00 p.m.

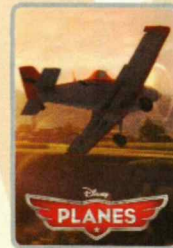
Join us in the Fitness Center for a Teen Only workout. Meet in Vibe to join in!

BUENA VISTA THEATRE

Deck 4 & 5, Midship
Today's Movies

OC - Open Captioning

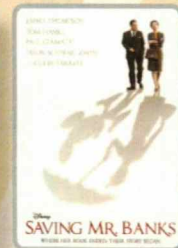
DOLBY.3D



8:30 a.m.
Duration:
1 hr 32 mins
Rating: PG



10:30 a.m.
Duration:
1 hr 43 mins
Rating: G



2:00 p.m.
Duration:
2 hrs 5 mins
Rating: PG-13

DOLBY.3D



5:30 p.m. & 8:15 p.m.
Duration: 1 hr 51 mins
Rating: PG-13



10:30 p.m.
Duration: 2 hrs 29 mins
Rating: PG-13

FAMILY VARIETY ACT

Featuring the
Physical Comedy
of Thomas John,
as he entertains the
entire family in this
fun-filled show.

*The Tube,
Deck 4, Aft,
7:30 p.m.*

ADULT VARIETY ACT

Featuring the
Comedy & Ventriloquism
of Lynn Trefzger,
as she entertains you in this
adult exclusive show.

*Walt Disney Theatre (18+),
Deck 3 & 4, Forward,
11:00 p.m.
(Doors open at 10:45 p.m.)*

YOUTH ACTIVITIES OPEN HOUSE

Open House is an opportunity for all to come and participate in a variety of exciting activities and free time in the Oceaneer Club, Oceaneer Lab, It's A Small World Nursery, Vibe and Edge throughout the cruise. During these times secured programming will still be offered in the other venue for those looking to check their children into care.

Disney's Oceaneer Lab: 5:00 p.m. - 6:30 p.m.

Disney's Oceaneer Club: 9:00 a.m. - 10:30 a.m.

Vibe: 9:00 a.m. - 10:30 a.m. & 6:30 p.m. - 8:30 p.m.

Edge: 5:00 p.m. - 6:30 p.m. & 10:00 p.m. - 12:00 mid

MORE TO ENJOY WHILE ONBOARD

PORT AND SHOPPING INFORMATION

Join Marissa & Johan for the Fine Watch Seminar to learn the difference between a \$10 watch & a \$10,000 watch. La Piazza, Deck 4 Aft at 11:45 a.m. Also become an expert on Diamonds, Tanzanite & Caribbean Gems at the Diamond & Gemstones Seminar in The Tube, Deck 4 Aft at 2:00 p.m. This not to be missed presentation will save you time & money followed by a raffle to win a Tanzanite Pendant!

EASTERN, WESTERN OR SOUTHERN CARIBBEAN

Set your compass for the Caribbean in 2014! Disney Cruise Line offers a variety of 7-night sailings to exotic ports in the Eastern, Western or Southern Caribbean. Visit the Onboard Sales Desk to learn more about our special onboard booking offer.

DISNEY VACATION CLUB® GROUP PREVIEW

Want to learn more about taking magical vacations year after year? Please see a Disney Vacation Club representative on Deck 4, Midship, or call 7-2805 from your stateroom phone for more information about our interactive group presentation.



SENSES
SPA & SALON

ELEMIS OXYDERMIE FACIAL

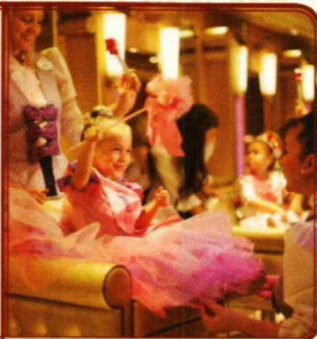
Give your skin what it has been craving. Now you can fight lines, wrinkles, spots and get the radiant glow that's been eluding you. Let us pamper your skin with our new cutting-edge technology that brings Microdermabrasion and Oxygen together in one luxurious treatment.

50 minutes for \$169

BIBBIDI BOBBIDI BOUTIQUE

Deck 5, Midship

Becoming the princess of your dreams creates memories for a lifetime. Where Fairy Godmothers in training are ready with Pixie Dust and Magic! Make your reservations for princess makeovers and the Pirate League today. Limited space available. Visit Bibbidi Bobbidi Boutique or call ext. 7-9438 to make a reservation.



Shutters

GET THE PICTURE!

Ask our friendly photographers about "Get the Picture!" And get the incredible value of an unlimited digital photo package, which includes all of your stateroom photos.

Visit Shutters today as supplies are limited.

**Terms and conditions apply. The Photo Book is only available for purchase during this cruise.*

ONBOARD AIRLINE CHECK IN

If you would like to have your boarding passes printed for you onboard and have your luggage taken to the airport for you, register before Wednesday. If you have a Disney Cruise Line airport transfer to Orlando International Airport and fly with one of the participating airlines, stop at Guest Services, Deck 3, Midship to register.

Connect@Sea

We are now offering a NEW and improved Internet service to stay connected on your cruise like no other in the industry! Internet packages range from \$0.09 per MB - \$29.00 (1000 MB package) limited time promotional offer. For more information contact your Connect@Sea Expert or Guest Services onboard.

FREE ON DEMAND TV

Watch Disney movies, Hollywood features and even captioned content, plus much more "On Demand" for FREE in the comfort of your stateroom! Bookmark your movie and come back to watch it later. Press MENU on your stateroom television remote control, and follow the prompts.

Disney Cruise Line. PORT ADVENTURES

Tomorrow the two nation island of St. Maarten / St. Martin awaits us. Your knowledgeable Port Adventures team is standing by to answer all your questions about the best choices for you and your family. Enjoy the beautiful and magnificent Orient Bay Beach or take a rip roaring ride on a RIB boat past the airport to the French side for some snorkeling. Visit the Port Adventures Desk, Deck 5, Midship, for more information.

SHOPPING

ROYAL COURT ROYAL TEA

Hear ye, hear ye! Princes and Princesses are welcomed to join some of your favorite Disney Princesses at the Royal Court Royal Tea for an afternoon filled with music, fun, and delicious goodies! Stop by the Guest Services Desk, Deck 3, Midship, to register and to learn more about this royal event. Reservations required. Fee will apply. Limited space available.

EVERYTHING PRINCESS AT MICKEY'S MAINSAIL

Are you cruising with a young, aspiring Princess? Stop by Mickey's Mainsail for all things Disney Princess including dresses and accessories. Whether your princess is inspired by Cinderella, Belle, Merida, or Tiana, Mickey's Mainsail has everything you need to be royal ready! Deck 3, Forward.

VERA BRADLEY BAGS AND ACCESSORIES

With their distinctive and colorful fabrics and trims, view our collection of Vera Bradley bags and accessories including the new Vera Bradley tote bags designed especially for Disney Cruise Line® available at White Caps. Deck 3, Forward.

GREAT REASON TO SHOP ONBOARD!

Stop by White Caps, Deck 3 Forward, and receive a Disney Cruise Line® Pillow for \$16.95 with any merchandise purchase of \$30.00 or more and/or a Disney Cruise Line® Throw for \$24.95 with any merchandise purchase of \$40.00 or more. While supplies last. Offer not valid on previous purchases. Offer subject to change without notice.

SOPHIA FIORI DIAMOND TRUNK SHOW

Sophia Fiori is an LA based designer, wholesaler, and one of Hollywood's favorite designers. Industry leaders in colored diamonds, and more specifically Caribbean blue diamonds - one of the single most popular purchases at sea because it reminds everyone of the colors of the Breathtaking Ocean! White Caps, Deck 3, Forward.

DDE003 07-10-2014 ©DISNEY

IMPORTANT INFORMATION

Security Notice

All Guests (including children) who wish to disembark the ship are required to present their Key to the World card at the gangway. A photo ID is also required for those Guests who are 18 years of age or older. Guests under the age of 18 are required to have a parent, guardian or other responsible adult sign an authorization form at the Guest Service Desk if they wish to go ashore unaccompanied or with any adult from another stateroom.

Sunscreen/Insect Repellent Advisory
Use sunscreen first and protect against mosquito borne illnesses by applying insect repellent on top of sunscreen when going ashore.

Cold and Flu Reminder

Please wash hands frequently and thoroughly, particularly before meals. Contact the Health Center by dialing 7-1923, should anyone in your party become ill.

Corridor Quiet Hours

As a courtesy to all our Guests, please recognize quiet hallway hours from 10:00 p.m. til 8:00 a.m.

Inclement Weather

For the safety of all Guests, outdoor events may be changed due to unforeseen weather conditions.

Environmental Message

With Disney's commitment to the Environment, please refrain from throwing anything over the Ship's side. Thank you!

No Reserved Seats Policy

As a courtesy to all our Guests, we kindly advise that the saving of seats is not permitted in the Walt Disney Theatre, and the saving of the sun loungers is not permitted on Deck 11, 12, and 13. Items left unattended will be returned to lost and found at Guest Services, Deck 3 Midship.

Smoking

For the comfort of our guests, the following areas are designated as smoking areas:
• Deck 13, forward, port side by Currents
• Deck 12, aft, port side outdoor area that is accessible through the Meridian Lounge
• Deck 4, aft, port side from 6:00 p.m. to 6:00 a.m. only (all of Deck 4 is non-smoking from 6:00 a.m. to 6:00 p.m.) Smoking is prohibited inside all guest staterooms and on stateroom verandahs. Guest found smoking in their staterooms or on their verandahs will be charged a \$250 stateroom recovery fee.

Walt Disney Theatre

Theatrical performances may use artificial fog, strobe lights, pyrotechnics and other special effects. For the safety of our performers and the comfort of those around you, the use of any photography, video recording device or any electronic equipment is prohibited.

Verandah Safety

Please do not leave any combustible materials on your balcony when not present in your stateroom for safety reasons.

Morning	8:30	8:45	9:00	9:15	9:30	9:45	10:00	10:15	10:30	10:45	11:00	11:15	11:30	11:45	12:00	12:15	12:30	12:45	1:00	1:15	1:30		
FUNNEL VISION	The Jungle Book (G) Funnel Vision							Mulan (G) Funnel Vision							Disney Channel on Deck Funnel Vision								
BUENA VISTA THEATRE	Planes (PG) - Open Captioning Duration: 1 Hour 32 Minutes							Monsters University (G) Duration: 1 Hour 43 Minutes															
CHARACTERS				Daisy Dk 4, Balcony Princess Anna Preludes	Princess Gathering Lobby Atrium			Princess Anna Preludes			Sofia Dk 4, Balcony			Character Dance Party Lobby Atrium			Peter Pan Dk 4, Balcony			Buzz Lobby Atrium			
FUN FOR ALL AGES	Toddler Time D Lounge	D Lounge JAKE It's A Small World Nursery Starts at 8:00 a.m.		Crafts: Memory Pages O'Gills Pub			Bingo Pre Sales			\$5,000 Mega Jackpot BINGO D Lounge			Disney Animation: Cartoon Physics D Lounge			Pictionary Challenge D Lounge							
	Open House Toddler Time It's A Small World Nursery Starts at 8:00 a.m.	Disney Trivia La Piazza		Disney Animation Cartoon Physics D Lounge			Toddler Time Goofy's Sports Deck						Disney Vacation Club The Tube - Group Preview			Crafts: Origami Frogs La Piazza							
ADULTS	Friends of Bill W. Outlook			Art of The Theme Show Tour Pre-Book at Guest Services			Crafts: Origami Hearts La Piazza			Movie Quotes Trivia O'Gills Pub			Watch Seminar La Piazza			Club 18*21 - Lunch Royal Court			Martini Tasting (21+) Meridian				
	Boot Camp (Nom. Fee) Senses Fitness Center			Pamper Party Senses Spa & Salon			How to Increase Your Metabolism Senses Spa & Salon			Ultimate Disney Trivia O'Gills Pub			Singles Lunch Royal Court			Pulse Analysis Senses Spa & Salon							
VIBE 14-17 YEARS OLD	Youth Activities Open House							Coffee Break			Dream Now! Sea How! - Theatrical			Teen Choice									
EDGE 11-14 YEARS OLD	Youth Activities Open House							Cards Tournament			Disney Animation: Creating a Character			Rockband Challenge			Game Challenge						
OCEANEER LAB 3-12 YEARS OLD	Magic PlayFloor										Pictionary												
OCEANEER CLUB 3-12 YEARS OLD	Youth Activities Open House							Piston Cup Challenge						Lunch			Marshmallow Olympics						
								Scavenger Hunt									Mickey's Puzzle Playtime						
Afternoon	1:45			2:00	2:15	2:30	2:45	3:00	3:15	3:30	3:45	4:00	4:15	4:30	4:45	5:00	5:15	5:30	5:45	6:00	6:15	6:30	6:45
FUNNEL VISION	Hercules (G) Funnel Vision							Tangled (PG) Funnel Vision							High School Musical - (TV-G) Funnel Vision								
BUENA VISTA THEATRE	Saving Mr. Banks (PG-13) Duration: 2 Hours 5 Minutes							Thor: The Dark World (PG-13) Duration: 1 Hour 51 Minutes															
CHARACTERS	Peter Pan Dk 4, Balcony	Woody Lobby Atrium (V)				Woody Lobby Atrium (V)				Mickey Dk 4, Balcony				Aladdin Preludes	Phineas & Ferb Lobby Atrium (H)	Minnie Dk 4, Balcony							
FUN FOR ALL AGES	Diamond and Gemstone Seminar The Tube						Disney WISHES Walt Disney Theatre			Bingo Pre Sales	Senses Spa BINGO D Lounge			Playhouse D Lounge						Disney WISHES Walt Disney Theatre			
	Crafts: Paper Plane Making La Piazza			Chip-It Golf (12+) Lobby Atrium			Disney Trivia La Piazza			Crafts: 3D Crafts La Piazza			Live Music with Take Cover La Piazza			Live Music with Ash & Mike Lobby Atrium							
ADULTS	70's Music Trivia O'Gills Pub			Know It All Trivia O'Gills Pub			Club 18*21 - Xbox® Kinect™ O'Gills Pub			Tequila & Margarita Tasting (21+) Ooh La La													
	Anyone Can Cook - Sea Bass D Lounge			Martini Tasting (21+) Meridian						Group Cycling Senses Fitness Center			Pilates Senses Fitness Center						Pub Quiz O'Gills Pub				
VIBE 14-17 YEARS OLD	Fun In the Sun			ESPN Dream Team Draft Day - Baseball			Foosball Tournament			Dive into DJ'ing			Cards Tournament			Chillin' in Vibe			Open House				
EDGE 11-14 YEARS OLD				Anyone Can Cook: Pizza									Youth Activities Open House						Wii Challenge				
OCEANEER LAB 3-12 YEARS OLD	Game Challenge						Disney Animation: Creating a Character						Craft Corner						Pathfinders				
OCEANEER CLUB 3-12 YEARS OLD	Memory Wall			Craft Corner												Youth Activities Open House							
	Relay Games			Pathfinders						Once Upon a Time						Dinner			Parachute Games				
																			Picture This				
Evening	7:00	7:15	7:30	7:45	8:00	8:15	8:30	8:45	9:00	9:15	9:30	9:45	10:00	10:15	10:30	10:45	11:00	11:15	11:30			11:45	12:00
FUNNEL VISION	High School Musical 2 - (TV-G) Funnel Vision							The Avengers (PG-13) Funnel Vision															
BUENA VISTA THEATRE	Thor: The Dark World (PG-13) Duration: 1 Hour 51 Minutes							The Lone Ranger (PG-13) Duration: 2 Hours 29 Minutes															
CHARACTERS	Mickey Dk 4, Balcony				Phineas & Ferb Lobby Atrium (H)	Cinderella Preludes				Aladdin Preludes			Donald Dk 4, Balcony										
FUN FOR ALL AGES	Snow White Preludes			Pluto Dk 4, Balcony						Stitch Dk 4, Balcony			Phineas & Ferb Lobby Atrium (H)	Tiana Preludes									
	Family Dance Party The Tube			THE PHYSICAL COMEDY OF JOHN The Tube			Disney WISHES Walt Disney Theatre			Disney Trivia D Lounge			Family Fusion D Lounge			Family Superstar Karaoke D Lounge							
	Family Fusion D Lounge									Live Music with Ash & Mike Lobby Atrium			Ash & Mike LIVE Lobby Atrium										
ADULTS	Live Guitar with Tony Delaney O'Gills Pub									DJ Requests The Tube			The Quest The Tube			The Comedy & Ventriloquism of LYNN TREFZGER Walt Disney Theatre			70's Remix with Club DJ Ollie The Tube				
							Pub Quiz O'Gills Pub			Club 18*21 - Mixer The Tube													
VIBE 14-17 YEARS OLD	Youth Activities Open House							Pump It Up			Crowning of the Couch Potato			Gender Wars									
EDGE 11-14 YEARS OLD	Wii Challenge			ESPN Dream Team Draft Day - Football			Game Challenge			Picture This			GAGA Ball			Ship Factor			Gender Wars				
OCEANEER LAB 3-12 YEARS OLD				Game Challenge									Craft Corner										
OCEANEER CLUB 3-12 YEARS OLD	Anyone Can Cook: Cupcakes			Get the Hook									Super Sloppy Science			Magic PlayFloor							
	Craft Corner			Game Challenge			Magic PlayFloor																

MONDAY, MARCH 10, 2014 - DAY AT SEA

BUENA VISTA THEATRE

Deck 4 & 5, Midship

Open Captioning

DOLBY 3D

DOLBY 3D



8:30 a.m.
Duration:
1 hr 32 mins
Rating: PG



10:30 a.m.
Duration:
1 hr 43 mins
Rating: G



2:00 p.m.
Duration:
2 hrs 5 mins
Rating: PG-13



5:30 & 8:15 p.m.
Duration:
1 hr 51 mins
Rating: PG-13



10:30 p.m.
Duration:
2 hrs 29 mins
Rating: PG-13

Character Appearances

DAISY DUCK

Deck 4, Balcony - 9:15 a.m.

PRINCESS ANNA OF ARENDELLE

Preludes - 9:15 a.m. & 10:45 a.m.

PRINCESS GATHERING

Lobby Atrium - 10:00 a.m.

PRINCESS SOFIA

Deck 4, Balcony
10:15 a.m. & 11:30 a.m.

PRINCESS MINNIE

Deck 4, Balcony - 11:00 a.m.

CHARACTER DANCE PARTY

Lobby Atrium - 12:15 p.m.

PETER PAN

Deck 4, Balcony
12:45 p.m. & 1:45 p.m.

JAKE - THE NEVERLAND PIRATE

Deck 4, Balcony
1:15 p.m. & 2:15 p.m.

BUZZ LIGHTYEAR

Lobby Atrium (V)
1:30 p.m. & 2:30 p.m.

WOODY

Lobby Atrium (V)
2:00 p.m. & 3:00 p.m.

MICKEY MOUSE

Deck 4, Balcony
4:45 p.m. & 7:15 p.m.

PLUTO

Deck 4, Balcony
5:15 p.m. & 7:45 p.m.

ALADDIN

Preludes - 5:15 p.m. & 9:30 p.m.

PHINEAS & FERB

Lobby Atrium (H) - 5:30 p.m.,
7:45 p.m. & 9:45 p.m.

PRINCESS TIANA

Preludes - 5:45 p.m. & 10:00 p.m.

MINNIE MOUSE

Deck 4, Balcony - 5:45 p.m.

SNOW WHITE

Preludes - 7:30 p.m.

CINDERELLA

Preludes - 8:00 p.m.

STITCH

Deck 4, Balcony - 9:30 p.m.

DONALD DUCK

Deck 4, Balcony - 10:00 p.m.

(H) Hallway - (S) Starboard Side - (P) Port Side - (V) Vestibule

For details of daily Disney character appearances, refer to the character line on your Navigator Grid, or the digital character board in the Lobby Atrium.

IMPORTANT NUMBERS

Fire/Security: 7-3001
Medical Emergency: 7-3000
Health Center: 7-1923

YOUTH ACTIVITIES THEMED EXPERIENCES

CLUBHOUSE SERIES
focuses on movement and features content which appeals to younger children.

JUMP UP! SERIES
includes large group games & movement-oriented activities.

IN THE SPOTLIGHT SERIES
focuses on children's stage presence with lots of activities and enthusiasm.

STORYBOOK SERIES
is designed with a strong connection to the Disney classic stories.

CREATE & INVENT SERIES
will have a tactile focus allowing children to create and admire their work.

SOLVE IT SERIES
are less active, but will challenge children with problem/solutions-based activities.

YOUTH ACTIVITIES OPEN HOUSE

A non-secured program with activities for families, adults and children of all ages to enjoy together.

SHIP DIRECTORY

YOUTH ACTIVITIES

DISNEY'S OCEANEER CLUB	DECK 5, MID	9:00 AM - 12:00 MID
DISNEY'S OCEANEER LAB	DECK 5, MID	9:00 AM - 12:00 MID
EDGE	DECK 13, MID	9:00 AM - 1:00 AM
VIBE	DECK 4, FWD	9:00 AM - 2:00 AM
IT'S A SMALL WORLD NURSERY	DECK 5, MID	9:00 AM - 11:30 PM

POOLS & MORE

* Children under 12 must have adult supervision in pool areas.

AQUADUCK	DECK 12, MID	9:00 AM - 11:00 PM
AQUALAB	DECK 12, AFT	10:00 AM - 6:00 PM
DONALD'S POOL	DECK 11, MID	9:00 AM - 6:00 PM
		8:00 PM - 10:00 PM
MICKEY'S POOL	DECK 11, MID	6:00 AM - 11:00 PM
MICKEY'S SLIDE	DECK 11, MID	9:00 AM - 6:00 PM
NEMO'S REEF	DECK 11, MID	9:00 AM - 6:00 PM
QUIET COVE POOL (18+)	DECK 11, FWD	6:00 AM - 12:00 MID
SATELLITE FALLS	DECK 13, FWD	6:00 AM - 8:00 PM

RECREATION

GOLF/SPORTS SIMULATORS	DECK 13, AFT	9:00 AM - 6:00 PM
GOOFY GOLF	DECK 13, AFT	8:00 AM - 10:00 PM
GOOFY'S SPORTS DECK	DECK 13, AFT	8:00 AM - 6:00 PM
MIDSHIP DETECTIVE AGENCY	DECKS 2 & 5, MID	9:00 AM - 10:00 PM
PORT ADVENTURES DESK	DECK 5, MID	9:00 AM - 5:00 PM
		7:00 PM - 8:30 PM
SENSES FITNESS CENTER (18+)	DECK 11, FWD	6:30 AM - 10:00 PM

GENERAL INFORMATION

ARR-CADE	DECK 11, AFT	24 HOURS
DISNEY VACATION CLUB	DECK 4, MID	9:00 AM - 11:00 AM
		2:30 PM - 10:00 PM
GUEST SERVICES	DECK 3, MID	24 HOURS
MEDICAL HEALTH CENTER	DECK 1, FWD	9:30 AM - 11:00 AM
		4:30 PM - 7:00 PM
ONBOARD SALES DESK	DECK 4, MID	10:00 AM - 12:00 PM
		2:00 PM - 6:00 PM
		7:30 PM - 8:30 PM
PORT & SHOPPING DESK	DECK 4, MID	10:00 AM - 11:30 AM
		7:30 PM - 8:30 PM
PRELUDES	DECK 3, FWD	2:30 PM - 3:15 PM
		5:45 PM - 6:30 PM
		8:00 PM - 8:45 PM
		10:30 PM - 11:30 PM
SENSES SPA AND SALON	DECK 11, FWD	8:00 AM - 10:00 PM
SHUTTERS PHOTO GALLERY	DECK 4, MID	10:00 AM - 11:00 PM
SHUTTERS DIGITAL	DECK 4, MID	24 HOURS

SHOPPING

BIBBIDI BOBBIDI BOUTIQUE	DECK 5, MID	9:00 AM - 9:00 PM
MICKEY'S MAINSAIL	DECK 3, FWD	9:30 AM - 11:00 PM
QUACKS	DECK 11, MID	10:00 AM - 4:00 PM
SEA TREASURES	DECK 3, FWD	9:30 AM - 11:00 PM
VISTA GALLERY	DECK 4, MID	10:00 AM - 10:00 PM
WHITE CAPS	DECK 3, FWD	9:30 AM - 11:00 PM
WHOZITS & WHATZITS	DECK 11, MID	10:00 AM - 4:00 PM

DINNER MENU

Animator's Palate: Pacific Rim
Enchanted Garden: Continental Market
Royal Court: French Dinner
Dining Times: 5:45 p.m. & 8:15 p.m.

DRINK OF THE DAY

Yellow Bird (Alcoholic)
Lava Smoothie (Non Alcoholic)

WEATHER FORECAST

Today: Partly Sunny
High: 76°F/24°C
Tomorrow: Partly Sunny
High: 76°F/24°C

Evening Attire: Cruise Casual

DINING & LOUNGES

BREAKFAST

CABANAS CONTINENTAL	DECK 11, AFT	7:00 AM - 7:30 AM
CABANAS	DECK 11, AFT	7:30 AM - 11:30 AM
ENCHANTED GARDEN	DECK 2, MID	8:30 AM - 10:45 AM
ROYAL COURT	DECK 3, MID	8:00 AM - 9:30 AM

LUNCH

CABANAS	DECK 11, AFT	11:30 AM - 2:00 PM
FILMORE'S FAVORITES	DECK 11, MID	11:00 AM - 6:00 PM
LUIGI'S PIZZA	DECK 11, MID	11:00 AM - 6:00 PM
ROYAL COURT	DECK 3, MID	12:00 PM - 1:30 PM
TOW MATER'S GRILL	DECK 11, MID	11:00 AM - 11:00 PM

DINNER

ANIMATOR'S PALATE	DECK 3, AFT	5:45 PM & 8:15 PM
ENCHANTED GARDEN	DECK 2, MID	5:45 PM & 8:15 PM
ROYAL COURT	DECK 3, MID	5:45 PM & 8:15 PM
CABANAS TABLE SERVICE	DECK 11, AFT	6:30 PM - 8:30 PM
PALO (18+) (RESERVATIONS REQ. & NOW FEE APPLIES)	DECK 12, AFT	6:00 PM - 8:30 PM
REMY (18+) (RESERVATIONS REQ. & NOW FEE APPLIES)	DECK 12, AFT	6:00 PM - 8:30 PM

LATE NIGHT SNACKS

LA PIAZZA (18+)	DECK 4, AFT	10:45 PM - 11:45 PM
LUIGI'S PIZZA	DECK 11, MID	9:30 PM - 12:30 AM

ADDED FEATURES

BEVERAGE STATION	DECK 11, MID	24 HOURS
EYE SCREAM	DECK 11, MID	11:00 AM - 11:00 PM
ROOM SERVICE	DIAL 0	24 HOURS

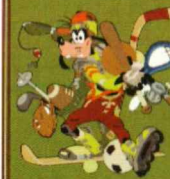
ENTERTAINMENT - LOUNGES - BARS

Adults must be 21 and older to consume alcoholic beverages.

BON VOYAGE	DECK 3, MID	10:00 AM - 11:30 PM
COVE BAR (18+)	DECK 11, FWD	10:00 AM - 11:00 PM
COVE CAFE (18+)	DECK 11, FWD	7:00 AM - 12:00 MID
CURRENTS (18+)	DECK 13, FWD	10:00 AM - 11:00 PM
D LOUNGE	DECK 4, MID	SHOWTIMES
FROZONE TREATS	DECK 11, MID	10:00 AM - 10:00 PM
LA PIAZZA (18+ AFTER 9:00 P.M.)	DECK 4, AFT	12:30 PM - 12:00 MID
MERIDIAN (18+)	DECK 12, AFT	10:00 AM - 12:00 MID
O'GILLS PUB (18+ AFTER 9:00 PM)	DECK 4, AFT	12:00 PM - 12:00 MID
O'OH LA LA (18+)	DECK 4, AFT	5:30 PM - 12:00 MID
OUTLOOK	DECK 14, MID	SUNSET TIMES
SKYLINE (18+)	DECK 4, AFT	5:30 PM - 12:30 PM
THE TUBE (18+ AFTER 9:00 P.M.)	DECK 4, AFT	9:30 PM - 2:00 AM
VISTA CAFE	DECK 4, MID	7:00 AM - 11:00 PM
WAVES	DECK 12, AFT	10:00 AM - 6:00 PM

Consumers who order raw or partially cooked, ready-to-eat food of animal origin, are hereby informed that the food is not sufficiently cooked to ensure its safety.

GOOFY'S SPORTS Digital Simulators



Sports Simulator

(Basketball, Baseball, Hockey, Football or Soccer) \$12 / half hr, \$20 / hr

Golf Simulator

\$25 / half hr, \$45 / hr.

Reservations can be made at the Port Adventures Desk, Deck 5, Midship or at the Simulators, Deck 13, Aft