

PERSONAL NAVIGATOR



MONDAY, JANUARY 20, 2014

Sunrise: 7:02 a.m. Sunset: 6:11 p.m.
Evening Attire: Cruise Casual
All Ashore: Approx: 11:45 a.m.
Last Tender: 5:30 p.m.

Monday: Partly Sunny High: 76°F/24°C
Tuesday: Partly Sunny High: 78°F/26°C

GRAND CAYMAN, CAYMAN ISLANDS



BUCKETS N BOARDS COMEDY PERCUSSION SHOW

WALT DISNEY THEATRE

Deck 3 & 4 Forward
6:15 P.M. & 8:30 P.M.

As a courtesy to all Guests, we kindly advise that the saving of seats is **not** permitted in the Walt Disney Theatre.

Assistance available at the Deck 3 entrance 30 minutes prior to show time.

Assistance available at the entrance to the Walt Disney Theatre 30 minutes prior to show time.

MARTIN LUTHER KING JR. DAY

Grand Cayman Port Information

The Cayman Islands were first sighted by European explorers in 1503, in a wayward voyage headed by Christopher Columbus. Though the two smaller islands were discovered on this fateful trip, the largest of them, Grand Cayman, would escape attention by sailors until 1655, when the area was claimed by the British. For centuries from the time of their discovery, the Cayman Islands would provide a place for ships to come ashore and rest on their journeys into the Caribbean. Crewmen on these ships would routinely replenish themselves on the meat provided by the native population of turtles.

By the 19th century, Grand Cayman was overtaken by pirates. It would take political upheaval and the establishment of a local government under British rule to transform the island into what it is today.

Discover a place that—once a welcome refuge for buccaneers—is today a treasured tourist hotspot. From sparkling surf to the bounty of local shops, whatever your pleasure, you'll find it here.

DOCKING - Please refer to Tender Letter

The ship anchors outside of the port and Guests take a tender to the dock. Tenders are small boats that provide transportation between the ship and the shore. Guests with special needs/disabilities wishing to leave the ship should check with Guest Services for accessible gangways.



FAMILY GAMESHOW

Bring the entire family and test your Disney knowledge in the high-tech interactive game show, Family Fusion.

D Lounge,
Deck 4, Midship,
10:15 p.m.

Don't Miss:

Art of The Theme Show Tour

Pre-Book at Guest Services, Deck 3, Midship

Join us on a guided ship tour and discover the key ingredients that make the Disney Fantasy cruise ship one-of-a-kind.

Disney Animation: Cartoon Physics

D Lounge, Deck 4, Midship - 9:00 a.m. & 4:00 p.m.

Go behind the scenes at Walt Disney Animation Studios and see how flat drawings and pencil lines can come to life through basic techniques such as "Stretch and Squash", and create your own "bouncing ball" animation exercise in this entertaining and fun enrichment program.

So You Think You Know Your Family?

The Tube, Deck 4, Aft - 7:30 p.m.

This fun-filled family game show is always full of surprises. Find out how well you know, or don't know your family!



TIME ZONE CHANGE

Remember to turn your clocks **BACK 1 HOUR** upon retiring on **MONDAY** evening, or first thing **TUESDAY** morning.

DINNER MENU

Animator's Palate: Pacific Rim Cuisine
Enchanted Garden: Continental Market Cuisine
Royal Court: French Dinner Cuisine

DRINK OF THE DAY

Yellow Bird (Alcoholic)
Lava Smoothie (Non Alcoholic)

IMPORTANT NUMBERS

Fire/Security: 7-3001
Medical Emergency: 7-3000
Health Center: 7-1923

FUN FOR ALL AGES HIGHLIGHTS



JAKE & THE NEVERLAND PIRATES

D Lounge, Deck 4, Midship - 8:30 a.m.

A'Ho! there mates, Join us for an adventure in D Lounge with Jake and the Neverland Pirates.

DISNEY TRIVIA

O'Gills Pub, Deck 4, Aft - 9:15 a.m.

Navigate your way through another round of questions to test how much you really know about Disney.

DIAMOND AND GEMSTONE SEMINAR

La Piazza, Deck 4, Aft - 10:00 a.m.

Join your Port and Shopping Guides, and become an educated shopper. They will teach you about the exotic gemstones found in the Caribbean. FREE Tanzanite Earrings for all who attend and a raffle to win a Gemstone Pendant!



CHIP-IT GOLF (12+)

Lobby Atrium, Deck 3, Midship - 2:30 p.m.

It's par for the course for our Guests 12 and older to compete on our special "greens" in this fun tournament.

FAMILY SUPERSTAR KARAOKE

D Lounge, Deck 4, Midship - 9:15 p.m. & 11:00 p.m.

Join your Cruise Staff in D Lounge tonight and sing along to your favorite song - fun for everyone.



FAMILY FUSION

D Lounge, Deck 4, Midship - 10:15 p.m.

Bring the entire family and test your Disney knowledge in the high-tech interactive game show, Family Fusion.

ADULT ACTIVITY HIGHLIGHTS

SENSES SPA FITNESS CLASSES & SEMINARS

Sunrise Stretch - Donald's Pool - 7:00 a.m.

Fab Abs - Donald's Pool - 7:30 a.m.

Footprint Analysis Clinic - Senses Fitness Center - 8:00 a.m.

Body Sculpt Boot Camp (Nom. Fee) - Senses Fitness Center - 9:00 a.m.

Facial Workshop - Senses Fitness Center - 10:15 a.m.

Group Cycling - Senses Fitness Center - 4:00 p.m.

Pilates - Senses Fitness Center - 5:00 p.m.

Fitness Frenzy (13-17, Nom. Fee) - Senses Fitness Center - 7:00 p.m.



TASTING CLASSES

Cognac Tasting (21+) - Cove Cafe (Nom. Fee, Pre Book) - 10:00 p.m.

Please make reservations for tastings at Guest Services for a nominal fee.

Tasting Seminars are only for Guests 21 and Older.

CLUB 18*21 - MINI GOLF

Goofy Golf, Deck 13, Aft - 4:30 p.m.

CLUB 18*21 - MIXER

The Tube, Deck 4, Aft - 10:00 p.m.

Come to join fellow cruisers your own age at our exclusive Club 18*21 event.



LIVE MUSIC WITH TAKE COVER

La Piazza, Deck 4, Aft - 5:15 p.m., 7:30 p.m., 9:30 p.m. & 10:30 p.m.

Join Take Cover as they play live tonight for your listening pleasure.

70'S MUSIC TRIVIA

O'Gills Pub, Deck 4, Aft - 7:30 p.m.

Let's step back in time and visit Studio 54 as we test your 70's music knowledge.

THE QUEST

The Tube, Deck 4, Aft - 10:15 p.m.

Enjoy the wildest and wackiest scavenger team event on the seven seas!

FREE CARD JACKPOT BINGO

D Lounge, Deck 4, Midship

Card Sales - 9:45 a.m.

Game Starts - 10:00 a.m.

Four CASH prizes will be won, raffle prizes and a free card for everyone in attendance for game number three. Must play to win!

MEGA RAFFLE JACKPOT BINGO

D Lounge, Deck 4, Midship

Card Sales - 7:15 p.m.

Game Starts - 7:30 p.m.

Join your Cruise Staff for family Bingo fun! Four cash prize games and great raffle prize packs to be won. Plus free Disney goodies for all in attendance! Don't miss out on the fun!



YOUTH ACTIVITY HIGHLIGHTS

DINE & PLAY

A convenience for families dining at 8:15 p.m., our Youth Activities Counselors will be available at 9:15 p.m. at the entrance of Royal Court, Enchanted Garden and Animator's Palate dining rooms to bring registered children to join the fun in the Youth Activity areas.



Deck 5, Midship (7-1440)

(3-12 years old)

9:00 a.m. - 12:00 mid

LITTLE EINSTEIN'S ADVENTURE

1:45 p.m.

Your junior cruisers will have the time of their lives with this program inspired by their favorite show with fun activities guaranteed to make them feel like a little genius!

BIG TOP FUN FEST!

6:15 p.m.

It's the greatest show on Earth. Come re-discover the circus Disney style with clowns, jugglers and classic Disney cartoons.



Deck 5, Midship (7-1445)

(3-12 years old)

9:00 a.m. - 12:00 mid

PISTON CUP CHALLENGE

9:30 a.m.

It's Dinoco time and you're part of the pit crew! Design your own race car and see if you've got what it takes to end up in the Winner's Circle!

SUPER SLOPPY SCIENCE

4:30 p.m. & 9:30 p.m.

Join Professor Make-O-Mess in some of the most extreme experiments you will ever see in the world of Super Sloppy Science!



Deck 13, Midship (7-9743)

(11-14 years old)

9:00 a.m. - 1:00 a.m.

ANIMATION CELLS

11:45 a.m.

Learn what it takes to be a Disney Animator, then put your new skills to the test as you create your very own animation cell.

GHOST VOYAGERS

10:15 p.m.

The ship has come upon some mysterious waters and strange things are afoot. Join a paranormal expert to help investigate the area and track down any evidence of ghostly beings on the ship.



Entrance on Deck 4, Forward (7-9418)

(14-17 years old)

9:00 a.m. - 2:00 a.m.

ANYONE CAN COOK

3:30 p.m.

Anyone can cook as we work together to create some of our favorite treats.

GENDER WARS

10:45 p.m.

It's the battle of girls vs. boys... Who will dominate to win the ultimate battle?

BUENA VISTA THEATRE

Deck 4 & 5, Forward
Today's Movies

DOLBY 3D



8:00 a.m.

Duration: 1 hr 32 mins

Rating: PG



1:00 p.m. & 10:45 p.m.

Duration: 2 hrs 5 mins

Rating: PG-13

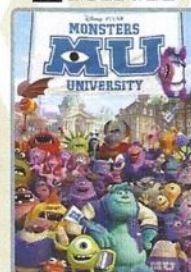
DOLBY 3D



3:30 p.m.

Duration: 1 hr 51 mins

Rating: PG-13



5:45 p.m. & 8:30 p.m.

Duration: 1 hr 43 mins

Rating: G

FAMILY KARAOKE



Be a singing sensation when you and your family take to the stage and sing along to your favorite song.

D Lounge,
Deck 4, Midship,
9:15 p.m. & 11:00 p.m.



ADULT VARIETY ACT

Featuring the Comedy & Rhythm of Buckets N Boards, as they entertain you in this adult exclusive show.

Walt Disney Theatre
Deck 3 & 4, Forward
11:00 p.m.
(Doors Open at 10:45 p.m.)

YOUTH ACTIVITIES OPEN HOUSE

Open House is an opportunity for all to come and participate in a variety of exciting activities and free time in the Oceaneer Club, Oceaneer Lab, It's A Small World Nursery, Vibe and Edge throughout the cruise. During these times secured programming will still be offered in the other venue for those looking to check their children into care.

Disney's Oceaneer Lab: 4:00 p.m. - 6:00 p.m.

Disney's Oceaneer Club: 9:00 a.m. - 11:00 a.m.

Vibe: 10:00 a.m. - 11:00 a.m. & 6:30 p.m. - 8:30 p.m.

Edge: 9:00 a.m. - 10:00 a.m. & 5:00 p.m. - 6:30 p.m.

MORE TO ENJOY WHILE ONBOARD

PORT AND SHOPPING INFORMATION

Join Marissa and Johan at Diamond & Gemstone Seminar in La Piazza, Deck 4 Aft at 10:00 a.m. Learn what makes a Diamond sparkle, the rarity of Ammolite and why Alexandrite changes color! They will give you insider tips on shopping for gemstones in the Caribbean. Free Tanzanite Stud Earrings and a Raffle to win a Tanzanite Pendant!

ALASKA AWAITS

Take your family on an Alaskan adventure they'll never forget! Sail through magnificent fjords fed by glaciers. Discover untamed nature and walk in the footsteps of prospectors. Begin your adventure today! Visit the Future Cruise Sales Desk to learn more about our special onboard booking offer.

MIDSHIP DETECTIVE AGENCY

The puppies from 101 Dalmatians have gone missing! Use your special detective "badge" to track down the puppies and catch the villain who took them. Decks 2 & 5, Midship.

ONBOARD AIRLINE CHECK IN

If you would like to have your boarding passes printed for you onboard and have your luggage taken to the airport for you, register before Wednesday. If you have a Disney Cruise Line airport transfer to Orlando International Airport and fly with one of the participating airlines, stop at Guest Services, Deck 3, Midship to register.

WIRELESS INTERNET: KEEPING YOU CONNECTED AT SEA

\$0.75 per minute, or save money by buying blocks of time. \$55.00 for 100 minutes, \$100.00 for 250 minutes and \$150.00 for 500 minutes. Wireless information sheets are available at Guest Services, Deck 3, Midship.

Please note: Due to satellite connectivity, onboard internet service will be noticeably slower than you may be accustomed to and may at times be interrupted or unavailable.

FREE ON DEMAND TV

Watch Disney movies, Hollywood features and even captioned content, plus much more "On Demand" for FREE in the comfort of your stateroom! Bookmark your movie and come back to watch it later. Press MENU on your stateroom television remote control, and follow the prompts.

Disney Cruise Line

PORT ADVENTURES

Welcome to the beautiful Cayman Islands. Take this opportunity to discover Grand Cayman's world renowned snorkeling. Dive down deep and explore the ocean floor on the Atlantis submarine or just sit back, relax and enjoy the sights and sounds of this island on the Grand Cayman Island tour. Visit our friendly Port Adventures team located Deck 5, Midship, and let us answer all your questions about Grand Cayman.

SHOPPING

VERA BRADLEY BAGS AND ACCESSORIES

With their distinctive and colorful fabrics and trims, view our collection of Vera Bradley bags and accessories including the new Vera Bradley tote bags designed especially for Disney Cruise Line® available at Whitecaps. Deck 3, Forward.

ROYAL COURT ROYAL TEA

Hear ye, hear ye! Princes and Princesses are welcomed to join some of your favorite Disney Princesses at the Royal Court Royal Tea for an afternoon filled with music, fun, and delicious goodies! Stop by the Guest Services Desk, Deck 3, Midship, to register and to learn more about this royal event. Reservations required. Fee will apply. Limited space available.

UNIQUE DISNEY ART AT THE VISTA GALLERY

Stop by the Vista Gallery to view original artwork by a variety of celebrated Disney artists featuring some of your favorite Disney characters. Also check out unique Disney art painted on original dessert plates from the Animator's Palate Restaurants on the Disney Magic® Cruise Ship and Disney Wonder® Cruise Ship. Created by popular Disney artists, Mark Seppala and Joe Kaminski, these one-of-a-kind plates are available exclusively on Disney Cruise Line® while supplies last. Deck 4, Midship.

EXOTIC ZULTANITE GEMSTONES

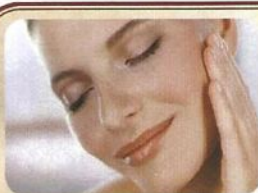
BY PROVENANCE GEMS

Found only in Turkey's Anatolian Mountains, Zultanite is a remarkable color changing gemstone exclusive to Provenance Gems. Visit Whitecaps today to learn more about Zultanite's rare color changing quality. Deck 3, Forward.

HAIR BRAIDING ONBOARD

Add some flair to your hair when you visit a Disney Cruise Line® hair braiding station! Stop by a station today for more information and to learn all about the available braiding styles. Subject to restrictions and availability. Deck 11, Midship.

Due to port regulations, when the ship is docked, the stores will remain closed.



SENSES
SPA & SALON

PAMPER PACKAGE

- 50 minute Full Body Massage
- Foot & Ankle Massage
- Indian Scalp Massage
- 25 Minute Booster Facial

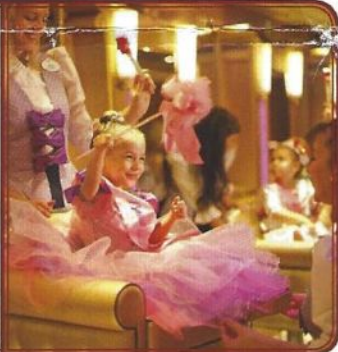
ONLY \$149

Call Senses Spa & Salon, 7-1465

BIBBIDI BOBBIDI BOUTIQUE

Deck 5, Midship

Becoming the princess of your dreams creates memories for a lifetime. Where Fairy Godmothers in training are ready with Pixie Dust and Magic! Make your reservations for princess makeovers and the Pirate League today. Limited space available. Visit Bibbidi Bobbidi Boutique or call ext. 9438 to make a reservation.



Shutters

GET THE PICTURE!

Ask our friendly photographers about "Get the Picture!" And get the incredible value of an unlimited digital photo package, which includes all of your stateroom photos.

Visit Shutters today as supplies are limited.

**Terms and conditions apply. The Photo Book is only available for purchase during this cruise.*

IMPORTANT INFORMATION

Security Notice

All Guests (including children) who wish to disembark the ship are required to present their Key to the World card at the gangway. A photo ID is also required for those Guests who are 18 years of age or older. Guests under the age of 18 are required to have a parent, guardian or other responsible adult sign an authorization form at the Guest Service Desk if they wish to go ashore unaccompanied or with any adult from another stateroom.

Sunscreen/Insect Repellent Advisory

Please remember to use plenty of sunscreen and mosquito repellent when venturing ashore.

Cold and Flu Reminder

Please wash hands frequently and thoroughly, particularly before meals. Contact the Health Center by dialing 7-1923, should anyone in your party become ill.

Corridor Quiet Hours

As a courtesy to all our Guests, please recognize quiet hallway hours from 10:00 p.m. to 8:00 a.m.

Inclement Weather

For the safety of all Guests, outdoor events may be changed due to unforeseen weather conditions.

Environmental Message

With Disney's commitment to the Environment, please refrain from throwing anything over the Ship's side. Thank you!

No Reserved Seats Policy

As a courtesy to all our Guests, we kindly advise that the saving of seats is not permitted in the Walt Disney Theatre, and the saving of the sun loungers is not permitted on Deck 11, 12, and 13. Items left unattended will be returned to lost and found at Guest Services, Deck 3 Midship.

Smoking

For the comfort of our guests, the following areas are designated as smoking areas:

- Deck 13, forward, port side by Currents
- Deck 12, aft, port side outdoor area that is accessible through the Meridian Lounge
- Deck 4, aft, port side from 6:00 p.m. to 6:00 a.m. only (all of Deck 4 is non-smoking from 6:00 a.m. to 6:00 p.m.) Smoking is prohibited inside all guest staterooms and on stateroom verandahs. Guest found smoking in their staterooms or on their verandahs will be charged a \$250 stateroom recovery fee.

Walt Disney Theatre

Theatrical performances may use artificial fog, strobe lights, pyrotechnics and other special effects. For the safety of our performers and the comfort of those around you, the use of any photography, video recording device or any electronic equipment is prohibited.

Verandah Safety

Please do not leave any combustible materials on your balcony when not present in your stateroom for safety reasons.

Morning	8:30	8:45	9:00	9:15	9:30	9:45	10:00	10:15	10:30	10:45	11:00	11:15	11:30	11:45	12:00	12:15	12:30	12:45	1:00	1:15	1:30	
FUNNEL VISION			Toy Story (G) Funnel Vision						Monsters, Inc. (G) Funnel Vision							Cars (G) Funnel Vision						
BUENA VISTA THEATRE	Planes (PG) Duration: 1 Hour 32 Minutes < Starts at 8:00 a.m.																			Saving Mr. Banks (PG-13) Duration: 2 Hours 5 Minutes		
CHARACTER			Peter Pan Dk 4, Balcony		Jake Dk 4, Balcony	Woody Lobby Atrium (V)	Goofy Lobby Atrium (P)		Jake Dk 4, Balcony		Woody Lobby Atrium (V)											
			Buzz Lobby Atrium (V)		Stitch Lobby Atrium (P)		Peter Pan Dk 4, Balcony		Stitch Lobby Atrium (P)		Minnie Dk 4, Balcony											
FUN FOR ALL AGES			Disney Trivia O'Gills Pub		Bingo Pre Sales				Port Adventures - Please check your tickets for meeting times and locations													
									Midship Detective Agency Deck 2 & 5, Midship													
							Diamond and Gemstone Seminar La Piazza															
ADULTS	Friends of Bill W. Outlook		Body Sculpt Boot Camp (Nom. Fee) Senses Fitness Center			Board Games Available in O'Gills Pub O'Gills Pub																
					Facial Workshop Senses Fitness Center																	
VIBE 14-17 YEARS OLD					Youth Activities Open House				Smoothie Hour				Sun Deck Fun									
EDGE 11-14 YEARS OLD	Youth Activities Open House				Pictionary				Xbox® Kinect™ - Sports				Animation Cells				Ball Games					
OCEANEER LAB 3-12 YEARS OLD					Piston Cup Challenge								Crafts Galore									
	Craft Corner												Human Bingo									
OCEANEER CLUB 3-12 YEARS OLD	Mickey's Puzzle Playtime				Magic PlayFloor				Relay Games				Cruisin' with Crush									
	Youth Activities Open House																Craft Corner					

Afternoon	1:45	2:00	2:15	2:30	2:45	3:00	3:15	3:30	3:45	4:00	4:15	4:30	4:45	5:00	5:15	5:30	5:45	6:00	6:15	6:30	6:45			
FUNNEL VISION	Cars (G) Funnel Vision			DJ Request Fest Deck Stage, Deck 11, Midship					Pixar Short Films (G) Funnel Vision					Toy Story 2 (G) Funnel Vision										
BUENA VISTA THEATRE	Saving Mr. Banks (PG-13) Duration: 2 Hours 5 Minutes				< Starts at 1:00 p.m.				Thor: The Dark World (PG-13) Duration: 1 Hour 51 Minutes						Monsters University (G) Duration: 1 Hour 43 Minutes									
CHARACTER											Mickey Mouse Lobby Atrium (H)			Peter Pan Lobby Atrium (P)		Donald Lobby Atrium (H)	Snow White Lobby Atrium (P)							
											Tiana Lobby Atrium (P)			Hook & Smee Dk 4, Balcony		Princess Anna Lobby Atrium (V)		Aladdin Dk 4, Balcony						
FUN FOR ALL AGES																Live Piano with Gayla Smith Lobby Atrium						 The Rhythm and Comedy of BUCKET'S N BOARDS Walt Disney Theatre		
	Midship Detective Agency Deck 2 & 5, Midship						Live Guitar with Tony Delaney Deck 12, Forward						Live Guitar with Tony Delaney Deck 12, Forward						Live Music with Take Cover La Piazza					
ADULTS	Books and Magazines available in Cove Cafe										Group Cycling Senses Fitness Center				Pilates Senses Fitness Center									
	Board Games Available in O'Gills Pub O'Gills Pub														Art of The Theme Show Tour Pre-Book at Guest Services									
VIBE 14-17 YEARS OLD				Video Scavenger Hunt							Anyone Can Cook		Matinee Movie				Open House							
EDGE 11-14 YEARS OLD	ESPN Dream Team Draft Day - Baseball			Just Dance							Craft Corner		Sports Deck Fun				Youth Activities Open House				GAGA Ball			
OCEANEER LAB 3-12 YEARS OLD	Magic PlayFloor						Disney Cruise Line Trivia						Super Sloppy Science						Pathfinders					
	Charades						Float Fun Trivia						Youth Activities Open House								Scavenger Hunt			
OCEANEER CLUB 3-12 YEARS OLD	Little Einstein's Adventure									Heffalump Expodishun						Dinner						Big Top Fun Fest!		
				Marshmallow Olympics																				

Evening	7:00	7:15	7:30	7:45	8:00	8:15	8:30	8:45	9:00	9:15	9:30	9:45	10:00	10:15	10:30	10:45	11:00	11:15	11:30	11:45	12:00
FUNNEL VISION					The Incredibles (PG) Funnel Vision								Brave (PG) Funnel Vision								
BUENA VISTA THEATRE					Monsters University (G) Duration: 1 Hour 43 Minutes								Saving Mr. Banks (PG-13) Duration: 2 Hours 5 Minutes								
CHARACTER		Mickey <small>Lobby Atrium (H)</small>			Aladdin <small>Preludes</small>							Snow White <small>Lobby Atrium (P)</small>	Cinderella <small>Lobby Atrium (H)</small>	Mickey <small>Lobby Atrium (H)</small>							
		Peter Pan <small>Dk 4, Balcony</small>	Snow White <small>Preludes</small>	Stitch <small>Dk 4, Balcony</small>								Princess Anna <small>Lobby Atrium (V)</small>		Hook & Smee <small>Preludes</small>							
FUN FOR ALL AGES		Bingo <small>Pre Sales</small>	Mega Raffle Jackpot Bingo 				The Rhythm and Comedy of BUCKETS N BOARDS <small>Walt Disney Theatre</small>		Family Superstar Karaoke <small>D Lounge</small>							Family Superstar Karaoke <small>D Lounge</small>					
		Family Dance Party <small>The Tube</small>	So You Think You Know Your Family? <small>The Tube</small>				Family Crafts <small>La Piazza</small>						Live Music with Daria & Roberto <small>Lobby Atrium</small>			Live Music with Daria & Roberto <small>Lobby Atrium</small>					
ADULTS		70's Music Trivia <small>O'Gills Pub</small>								DJ Request Fest <small>The Tube</small>				The Quest <small>The Tube</small>				The Rhythm and Comedy of BUCKETS N BOARDS <small>Walt Disney Theatre</small>		Club DJ 4FRONT <small>The Tube</small>	
		Live Music with Take Cover <small>La Piazza</small>								Live Music with Take Cover <small>La Piazza</small>											
VIBE 14-17 YEARS OLD	Youth Activities Open House												Smoothie Hour		Gender Wars		Ghost Voyagers				
EDGE 11-14 YEARS OLD	GAGA Ball		Anyone Can Cook: Cupcakes		Games & More								Ghost Voyagers		Gender Wars						
OCEANEER LAB 3-12 YEARS OLD							Pictionary														
							Dance Party								Xbox® Challenge						
OCEANEER CLUB 3-12 YEARS OLD																					
							Face Paint Time								Games & More						

Symbol for activities that will be repeated during the cruise



Youth Activities Open House



FOLD



FOLD



FOLD



FOLD



FOLD



FOLD



FOLD



FOLD



FOLD



FOLD



FOLD



FOLD



FOLD



FOLD



FOLD



FOLD



FOLD



FOLD



FOLD

MONDAY, JANUARY 20, 2014 - GRAND CAYMAN

BUENA VISTA THEATRE

Deck 4 & 5, Forward

DOLBY 3D



8:00 a.m.
Duration:
1 hr 32 mins
Rating: PG



1:00 & 10:45 p.m.
Duration:
2 hrs 5 mins
Rating: PG-13



3:30 p.m.
Duration:
1 hr 51 mins
Rating: PG-13

DOLBY 3D



5:45 & 8:30 p.m.
Duration:
1 hr 43 mins
Rating: G

Character Appearances

PHINEAS & FERB
Lobby Atrium (H)
9:00 a.m. & 10:30 a.m.

GOOFY
Lobby Atrium (P)
9:00 a.m. & 10:00 a.m.

PETER PAN
Deck 4, Balcony
9:00 a.m., 10:00 a.m.
& 7:15 p.m.
Lobby Atrium (P) - 5:15 p.m.

BUZZ LIGHTYEAR
Lobby Atrium (V)
9:00 a.m. & 10:30 a.m.

JAKE - THE NEVERLAND PIRATE
Deck 4, Balcony
9:30 a.m. & 10:30 a.m.

STITCH
Lobby Atrium (P)
9:30 a.m. & 10:30 a.m.
Preludes
5:30 p.m. & 9:30 p.m.
Deck 4, Balcony - 7:45 p.m.

WOODY
Lobby Atrium (V)
9:45 a.m. & 11:00 a.m.

MINNIE MOUSE
Deck 4, Balcony
11:00 a.m.
Lobby Atrium (H)
9:30 p.m.

DONALD DUCK
Lobby Atrium (P)
11:00 a.m.
Lobby Atrium (H)
5:30 p.m. & 7:45 p.m.

MICKEY MOUSE
Lobby Atrium (H)
4:30 p.m., 7:15 p.m.
& 10:00 p.m.

PRINCESS TIANA
Lobby Atrium (P) - 4:45 p.m.
CAPTAIN HOOK & MR SMEE
Deck 4, Balcony - 5:15 p.m.
Preludes - 10:00 p.m.

CINDERELLA
Lobby Atrium
5:30 p.m. & 9:45 p.m.

PRINCESS ANNA OF ARENDELLE
Lobby Atrium (V)
5:30 p.m., 7:30 p.m.
& 9:30 p.m.

ALADDIN & GENIE
Deck 4, Balcony - 5:45 p.m.
Preludes - 8:00 p.m.
Lobby Atrium (P)
10:00 p.m.

SNOW WHITE & DOPEY
Lobby Atrium (P)
5:45 p.m. & 9:30 p.m.
Preludes - 7:30 p.m.

BELLE
Deck 4, Balcony - 9:30 p.m.

(H) Hallway - (S) Starboard Side - (P) Port Side - (V) Vestibule

YOUTH ACTIVITIES THEMED EXPERIENCES

CLUBHOUSE SERIES
focuses on movement and features content which appeals to younger children.

JUMP UP! SERIES
includes large group games & movement-oriented activities.

STORYBOOK SERIES
is designed with a strong connection to the Disney classic stories.

CREATE & INVENT SERIES
will have a tactile focus allowing children to create and admire their work.

IN THE SPOTLIGHT SERIES
focuses on children's stage presence with lots of activities and enthusiasm.

SOLVE IT! SERIES
are less active, but will challenge children with problem/solutions-based activities.

YOUTH ACTIVITIES OPEN HOUSE

A non-secured program with activities for families, adults and children of all ages to enjoy together.

SHIP DIRECTORY

YOUTH ACTIVITIES

DISNEY'S OCEANEER CLUB	DECK 5, MID	9:00 AM - 12:00 MID
DISNEY'S OCEANEER LAB	DECK 5, MID	9:00 AM - 12:00 MID
EDGE	DECK 13, MID	9:00 AM - 1:00 AM
VIBE	DECK 4, FWD	9:00 AM - 2:00 AM
IT'S A SMALL WORLD NURSERY	DECK 5, MID	9:00 AM - 11:00 PM

RECREATION

AQUADUCK	DECK 12, MID	9:00 AM - 11:00 PM
AQUALAB	DECK 12, AFT	10:00 AM - 6:00 PM
DONALD'S POOL	DECK 11, MID	9:00 AM - 6:00 PM
		8:00 PM - 10:00 PM
GOLF/SPORTS SIMULATORS	DECK 13, AFT	9:00 AM - 6:00 PM
GOOFY GOLF	DECK 13, AFT	8:00 AM - 10:00 PM
GOOFY'S SPORTS DECK	DECK 13, AFT	8:00 AM - 6:00 PM
MICKEY'S POOL	DECK 11, MID	6:00 AM - 11:00 PM
MICKEY'S SLIDE	DECK 11, MID	9:00 AM - 6:00 PM
MIDSHIP DETECTIVE AGENCY	DECK 2 & 5, MID	9:00 AM - 10:00 PM
NEMO'S REEF	DECK 11, MID	9:00 AM - 6:00 PM
PORT ADVENTURES DESK	DECK 5, MID	9:00 AM - 12:30 PM
		7:00 PM - 8:30 PM
QUIET COVE POOL	DECK 11, FWD	6:00 AM - 12:00 MID
SATELLITE FALLS	DECK 13, FWD	6:00 AM - 8:00 PM

GENERAL INFORMATION

ARR-CADE	DECK 11, AFT	24 HOURS
DISNEY VACATION CLUB	DECK 4, MID	5:00 PM - 10:00 PM
FUTURE CRUISE SALES DESK	DECK 4, MID	9:00 AM - 11:00 AM
		4:00 PM - 6:00 PM
		7:30 PM - 10:00 PM
GUEST SERVICES	DECK 3, MID	24 HOURS
MEDICAL HEALTH CENTER	DECK 1, FWD	9:30 AM - 11:00 AM
		4:30 PM - 7:00 PM
PORT & SHOPPING DESK	DECK 4, MID	9:30 AM - 10:30 AM
		7:30 PM - 8:30 PM
PRELUDES	DECK 3, FWD	5:45 PM - 6:30 PM
		8:00 PM - 8:45 PM
		10:30 PM - 11:00 PM
SENSES SPA AND SALON	DECK 11, FWD	8:00 AM - 10:00 PM
SHUTTERS PHOTO GALLERY	DECK 4, MID	5:00 PM - 10:30 PM
SHUTTERS DIGITAL	DECK 4, MID	24 HOURS

SHOPPING

BIBBIDI BOBBIDI BOUTIQUE	DECK 5, MID	9:00 AM - 9:00 PM
MICKEY'S MAINSAIL	DECK 3, FWD	5:45 PM - 11:00 PM
QUACKS	DECK 11, MID	
SEA TREASURES	DECK 3, FWD	5:45 PM - 11:00 PM
VISTA GALLERY	DECK 4, MID	6:00 PM - 10:00 PM
WHITECAPS	DECK 3, FWD	5:45 PM - 11:00 PM
WHOZITS & WHATZITS	DECK 11, MID	9:00 AM - 10:30 AM

DINNER MENU

Animator's Palate: Pacific Rim
Enchanted Garden: Continental Market Cuisine
Royal Court: French Cuisine
Dining Times: 5:45 p.m. & 8:15 p.m.

DRINK OF THE DAY

Yellow Bird (Alcoholic)
Lava Smoothie (Non Alcoholic)

WEATHER FORECAST

Monday: Partly Sunny
High: 76° F/24° C
Tuesday: Partly Sunny
High: 78° F/26° C

Evening Attire: Cruise Casual

DINING & LOUNGES

BREAKFAST

CABANAS CONTINENTAL	DECK 11, AFT	7:00 AM - 7:30 AM
CABANAS	DECK 11, AFT	7:30 AM - 11:30 AM
ENCHANTED GARDEN	DECK 2, MID	8:00 AM - 10:45 AM
ROYAL COURT	DECK 3, MID	8:00 AM - 9:30 AM

LUNCH

CABANAS	DECK 11, AFT	11:30 AM - 2:15 PM
FILLMORE'S FAVORITES	DECK 11, MID	10:30 AM - 6:00 PM
LUIGI'S PIZZA	DECK 11, MID	10:30 AM - 6:00 PM
ROYAL COURT	DECK 3, MID	12:00 PM - 1:30 PM
TOW MATER'S GRILL	DECK 11, MID	10:30 AM - 11:00 PM

DINNER

ANIMATOR'S PALATE	DECK 3, AFT	5:45 PM & 8:15 PM
ENCHANTED GARDEN	DECK 2, MID	5:45 PM & 8:15 PM
ROYAL COURT	DECK 3, MID	5:45 PM & 8:15 PM
CABANAS TABLE SERVICE	DECK 11, AFT	6:30 PM - 8:30 PM
PALO (18+) (RESERVATIONS REQ. & NON. FEE APPLIES)	DECK 12, AFT	6:00 PM - 8:30 PM
REMY (18+) (RESERVATIONS REQ. & NON. FEE APPLIES)	DECK 12, AFT	6:00 PM - 8:30 PM

LATE NIGHT SNACKS

LA PIAZZA (18+)	DECK 4, AFT	10:45 PM - 11:45 PM
LUIGI'S PIZZA	DECK 11, MID	9:30 PM - 12:30 AM

ADDED FEATURES

BEVERAGE STATION	DECK 11, MID	24 HOURS
EYE SCREAM	DECK 11, MID	11:00 AM - 11:00 PM
ROOM SERVICE	DIAL 0	24 HOURS

ENTERTAINMENT - LOUNGES - BARS

Adults must be 21 and older to consume alcoholic beverages.

BON VOYAGE	DECK 3, MID	10:00 AM - 11:30 PM
COVE BAR (18+)	DECK 11, FWD	11:00 AM - 11:00 PM
COVE CAFE (18+)	DECK 11, FWD	7:00 AM - 12:00 MID
CURRENTS (18+)	DECK 13, FWD	10:00 AM - 11:00 PM
D LOUNGE	DECK 4, MID	SHOWTIMES
FROZONE TREATS	DECK 11, MID	10:00 AM - 10:00 PM
LA PIAZZA (18+ AFTER 9:00 P.M.)	DECK 4, AFT	3:00 PM - 12:00 MID
MERIDIAN (18+)	DECK 12, AFT	12:00 PM - 12:00 MID
O'GILLS PUB (18+ AFTER 9:00 PM)	DECK 4, AFT	2:00 PM - 12:00 MID
OOH LA LA (18+)	DECK 4, AFT	5:00 PM - 12:00 MID
OUTLOOK	DECK 14, MID	SUNSET TIMES
SKYLINE (18+)	DECK 4, AFT	5:00 PM - 12:30 AM
THE TUBE (18+ AFTER 9:00 P.M.)	DECK 4, AFT	9:30 PM - 2:00 AM
VISTA CAFE	DECK 4, MID	7:00 AM - 11:00 PM
WAVES	DECK 12, AFT	10:00 AM - 6:00 PM

Consumers who order raw or partially cooked, ready-to-eat food of animal origin, are hereby informed that the food is not sufficiently cooked to ensure its safety.



TIME ZONE CHANGE

Remember to turn your clocks **BACK 1 HOUR** upon retiring on **MONDAY** evening, or first thing **TUESDAY** morning.

All Ashore: Approx. 11:45 a.m.
Last Tender: Approx. 5:30 p.m.

Ship's Agent In Grand Cayman
Bodden Shipping Agency: Fifth Floor,
Room 508, Gorang Avenue,
GT Grand Cayman,
Tel: 345-949-6254 or 345-949-7424

IMPORTANT NUMBERS
Fire/Security: 7-3001
Medical EMERGENCY: 7-3000
Health Center: 7-1923