

# PERSONAL NAVIGATOR

Disney DREAM

FRIDAY, FEBRUARY 14, 2014

NASSAU, BAHAMAS

Sunrise: 6:45 a.m. Sunset: 6:04 p.m.

Evening Attire: Pirate or Cruise Casual

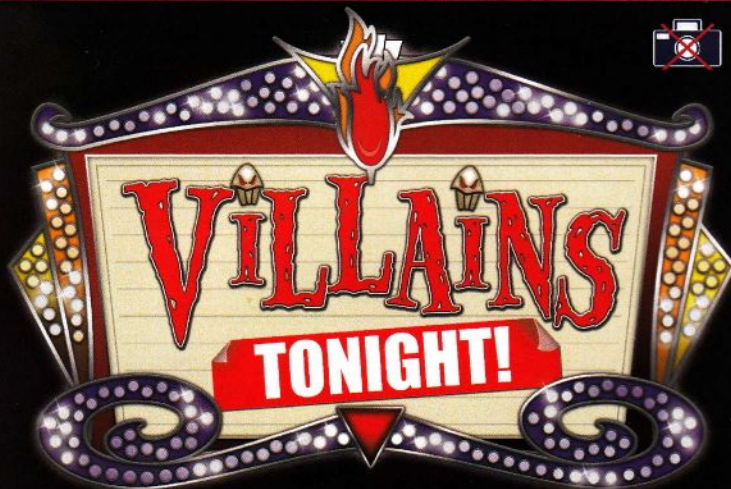
All Ashore: 9:30 a.m.

All Aboard: 5:45 p.m.

Gangway: Deck 1, Midship/Deck 1, Forward &

Today: Partly Sunny High: 76°F/24°C

Tomorrow: Partly Sunny High: 72°F/22°C



**WALT DISNEY THEATRE**  
**DECK 3 & 4, FORWARD**  
**6:15 P.M. & 8:30 P.M.**

As a courtesy to all Guests, we kindly advise that the saving of seats is **not** permitted in the Walt Disney Theatre.

**VALENTINE'S DAY**

Assistance available at the entrance to the Walt Disney Theatre 30 minutes prior to show time.

## Nassau Port Information

While you will find many great experiences in Nassau, there have been reports of increased crime, including assaults and robberies involving tourists in the area. As in any large city, you'll want to take some basic precautions to make the most of your time ashore.

- Be aware of your surroundings at all times, just as you would in your normal daily activities.
- Avoid short cuts, narrow alleys or poorly lit streets. We recommend that guests only visit the downtown shopping areas and other tourist locations.
- Leave valuables in your room safe and avoid carrying large amounts of cash. Exercise caution when using ATMs. Cameras and handbags should be carried out of sight and secured to your person with a strap.
- Leave passports, air transportation tickets and other travel documents in your room safe. When going ashore, each adult is required to carry a Driver's license, copy of passport or other government-issued photo ID.
- If traveling by taxi, use only licensed taxi operators.
- In general, use the same level of precaution you would use in any tourist destination.
- Most crimes are easier to commit in dark unlit areas. You should stay out of these types of areas and consider returning to the ship before nightfall. If you stay out at night, please be extra vigilant about your personal safety.

**MIKEY'S PIRATES**  
**in the CARIBBEAN**

It's a Pirate Celebration, me hearties! Come experience all the pirate fun alongside Captain Mickey Mouse and his famous Pirate Crew.  
(Weather Permitting)  
**7:45 p.m. - 8:05 p.m.**  
**Deck 11 & 12, Midship marks the spot**

**Buccaneer Blast**  
**Fireworks**  
**10:30 p.m.**  
**Deck 11 & 12, Midship marks the spot**  
(Weather Permitting)

## Don't Miss:

### Making of the Dream

*Evolution, Deck 4, Aft - 11:30 a.m.*

*Evolution, Deck 4, Aft - 2:30 p.m. (Guests 18+ only)*

Explore the origins of Disney Cruise Line and the latest and greatest innovations conjured especially for the Disney Dream in this fascinating and entertaining behind-the-scenes program.

### Art of The Theme Show Tour (18+)

*Meet at Meridian, Deck 12, Aft - 2:00 p.m.*

Join us on a guided ship tour and discover the key ingredients that make the Disney Dream cruise ship one-of-a-kind.

### A Pirate's Life For Me

*D Lounge, Deck 4, Midship - 6:30 p.m. & 9:45 p.m.*

Calling all Pirates, we be! If ye have an adventurous spirit or pirate savvy, come spin the "Wheel of Destiny" for a treasure trove of fun be ripe for the takin' in this action packed pirate game show.

### Krazy Karaoke

*Evolution, Deck 4, Aft - 11:00 p.m.*

Take to the stage, grab a microphone and sing your favorite tunes with your Club Host and DJ.

Disney Cruise Line

PORT ADVENTURES

Welcome to Nassau, capital of the Bahamas. It is not too late to book an amazing adventure to Blue Lagoon Island, Atlantis, or you could book a snorkeling adventure.

All Port Adventures meet onboard the ship in Nassau. Please check your tour tickets for meeting times and locations.

## DINNER MENU

Animator's Palate: Pacific Rim Cuisine  
Enchanted Garden: Continental Market  
Royal Palace: French Dinner

## DRINK OF THE DAY

Yellow Bird (Alcoholic)  
Parrot Song (Non Alcoholic)

## IMPORTANT NUMBERS

Fire/Security	7-3001
Medical EMERGENCY	7-3000
Health Center	7-1923



# FUN FOR ALL AGES HIGHLIGHTS



## JACK-JACK'S INCREDIBLE DIAPER DASH

*Lobby Atrium, Deck 3, Midship - 11:30 a.m.*

Calling all baby Cruisers! It's time to take to the mat to see who's the fastest crawler of the seven seas! Register your baby 15 minutes prior to the big race.



## CHIP-IT GOLF (12+)

*Lobby Atrium, Deck 3, Midship - 1:00 p.m.*

It's par for the course for our Guests 12 and older to compete on our special "greens" in this fun tournament.

## VALENTINES CRAFT

*D Lounge, Deck 4, Midship - 1:15 p.m.*

Make something for someone special for Valentines Day.



## DISNEY ANIMATION: CREATING A CHARACTER

*D Lounge, Deck 4, Midship - 2:00 p.m.*

Go behind the scenes at Walt Disney Animation Studios as Walt Disney himself talks about his most famous characters, then learn the basic techniques of drawing Mickey and Donald in this fun and interesting enrichment program.



## DISNEY VACATION CLUB GROUP PREVIEW

*Evolution, Deck 4, Aft - 4:30 p.m.*

Want to learn more about taking magical vacations year after year? Please see a Disney Vacation Club representative on Deck 4, Midship, or call 7-2805 from your stateroom phone for more information about our interactive group presentation.

## JEWISH SABBATH

*Outlook, Deck 14, Midship - 5:15 p.m.*

A quiet space is reserved for those wishing to conduct their own service.



## A PIRATE'S LIFE FOR ME

*D Lounge, Deck 4, Midship - 6:30 p.m. & 9:45 p.m.*

Calling all Pirates, we be! If ye have an adventurous spirit or pirate savvy, come spin the "Wheel of Destiny" for a treasure trove of fun be ripe for the takin' in this action packed pirate game show.

# ADULT ACTIVITY HIGHLIGHTS



## SENSES SPA FITNESS CLASSES & SEMINARS

*Body Sculpt Boot Camp* - Goofy's Sports Deck (Nom. Fee) - 8:00 a.m.  
*Acupuncture Seminar: Stress, Insomnia and Depression* - Senses Fitness Center - 9:00 a.m.  
*Wake Up & Stretch Class* - Senses Fitness Center - 9:00 a.m.  
*Group Cycling* - Senses Fitness Center - 10:00 a.m.  
*Arthritis and Back Pain Solutions* - Senses Fitness Center - 10:00 a.m.  
*Good Feet Seminar: Relieving Back Pain* - Senses Spa & Salon - 11:30 a.m.  
*How to Increase Your Metabolism* - Senses Spa & Salon - 2:00 p.m.  
*Good Feet Seminar: Walking In Comfort* - Senses Spa & Salon - 3:30 p.m.  
*Acupuncture Digestive Clinic* - Senses Fitness Center - 4:00 p.m.  
*Yoga* - Senses Fitness Center - 4:30 p.m.

## TASTING CLASSES

*Wine Tasting* (21+) - Pink - 12:15 p.m.  
*Mixology* (21+) - Skyline (18+) - 2:00 p.m. & 4:00 p.m.  
*Tequila & Margarita Tasting* (21+) - District Lounge - 3:30 p.m.  
*Beer Tasting* (21+) - 687 Pub - 3:45 p.m.  
*Martini Tasting* (21+) - Meridian - 4:00 p.m.  
*Cognac Tasting* (21+) - Meridian - 9:45 p.m.  
*Whiskey Tasting* (21+) - Cove Cafe - 9:45 p.m.

Please make reservations for tastings at Guest Services for a nominal fee. Tasting Seminars are only for Guests 21 and Older.



## CLUB 18\*21 - XBOX® KINECT™

*687 Pub, Deck 4, Aft - 5:00 p.m.*

## CLUB 18\*21 - MIXER

*Currents, Deck 13, Forward - 10:00 p.m.*

Club 18\*21 is an exclusive gathering for young adult Guests. Come meet some of your fellow cruisers and share stories of your cruise thus far, before we head up on deck for Buccaneer Blast and Club Pirate.

## TV TUNES TRIVIA

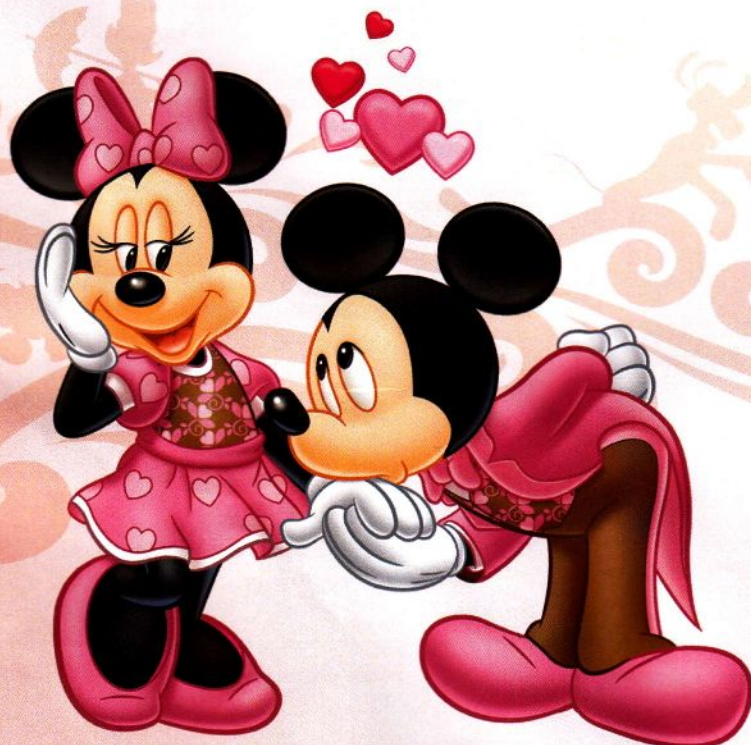
*687 Pub, Deck 4, Aft - 5:30 p.m.*

Determine just how much you know about your television theme tunes.

## EVOLUTION NIGHTCLUB WITH CLUB DJ JON

*Evolution, Deck 4, Aft - 12:00 a.m.*

Join Club DJ Jon as he rocks the nightclub.



# \$5,000 MEGA JACKPOT BINGO



**D Lounge, Deck 4, Midship**

**Card Sales - 4:00 p.m.**

**Game Starts - 4:15 p.m.**

Don't miss your chance to take home big money! 4 CASH prize games and great raffle prizes to be won! Complete the fourth game in 46 numbers or less and win the \$5,000 Mega Jackpot!



# YOUTH ACTIVITIES HIGHLIGHTS

## Dine & Play

A convenience for families dining at 8:15 p.m., our Youth Activities Counselors will be available at 9:15 p.m. at the entrance of Royal Palace, Enchanted Garden and Animator's Palate dining rooms to bring registered children to join the fun in the Youth Activity areas.



Deck 5, Midship (7-5864) 9:00 a.m. - 12:00 mid

## OPEN HOUSE

8:00 a.m. - 9:00 a.m.

Your chance to see our toddler space, It's A Small World Nursery.



Deck 5, Midship (7-1440) 1:00 p.m. - 10:30 p.m.  
(3 - 12 years old)

## MICKEY'S PUZZLE PLAYTIME

10:00 a.m.

Come and Play with Mickey & friends as they share their favorite games, puzzles and dances!

## SO YOU WANT TO BE A PIRATE?

5:00 p.m. & 8:30 p.m.

Have you learned about life on the high seas? Do you have what it takes to be a pirate? Join Captain Hook and friends to find out!



Deck 5, Midship (7-1445) 9:00 a.m. - 1:00 a.m.  
(3 - 12 years old)

## STITCH'S ADVENTURE SQUAD

10:45 a.m. & 1:00 p.m.

Stitch, everyone's favorite alien, is making an appearance to share some of his mischievous games and activities.

## SUPER SLOPPY SCIENCE

11:30 a.m., 2:15 p.m. & 9:30 p.m.

Join Professor Make-O-Mess in some of the most extreme experiments you will ever see in the world of Super Sloppy Science!



Deck 13, Midship (7-9743) 10:00 a.m. - 1:00 a.m.  
(11 - 14 years old)

## ANIMATION CELLS

10:00 a.m.

Learn what it takes to be a Disney Animator, then put your new skills to the test as you create your very own animation cell.

## ANYONE CAN COOK: CUPCAKES

4:00 p.m.

Anyone can cook as we work together to create some of our favorite treats. From our galley to yours; join our chef as they show you how to create cupcakes!



Entrance on Deck 4, Forward (7-9417)  
(14 - 17 years old)  
11:00 a.m. - 2:00 a.m.

## DJ TRAINING

4:00 p.m.

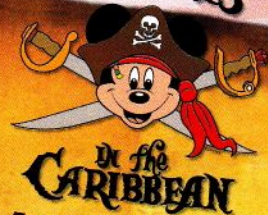
Mix it up as you learn the tricks of the trade from our teen counselor DJ's.

## SUPER SLOPPY SCIENCE

4:45 p.m.

Join Professor Make-O-Mess in some of the most extreme experiments you will ever see in the world of Super Sloppy Science!

Disney's  
**PIRATES**



IN THE  
**CARIBBEAN**

7:45 p.m. - 8:05 p.m.

Pirate Games start at 7:30 p.m.  
Deck Stage, Deck 11, Midship

It's a Pirate Celebration, me hearties!

Come experience all the pirate fun alongside Captain Mickey Mouse and his famous Pirate Crew.  
(Weather Permitting)

## Buccaneer Blast Fireworks

What's a pirate party without some fireworks to remind the other ships who be ruling the oceans blue?

10:30 p.m.

Deck 11 & 12, Midship  
mark the spot

Fireworks will be on display Starboard side  
Seen best from Deck 11, center pool area, and on Deck 12.

## Club Pirate

If ye be a fan of Pirates of the Caribbean, tis time to revel in the night at the hottest dance club in all the seven seas with Club DJ Jon.

(Immediately following Buccaneer Blast)



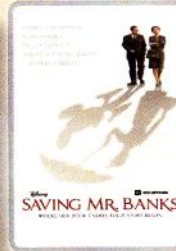
# BUENA VISTA THEATRE

Deck 4 & 5, Forward  
Today's Movies

OC - Open Captioning



10:15 a.m.  
Duration:  
1 hr 48 mins  
Rating: PG



12:45 p.m.  
Duration:  
2 hrs 5 mins  
Rating: PG-13

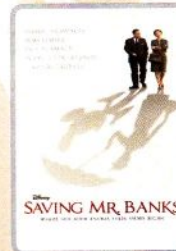


3:15 p.m.  
Duration:  
1 hr 51 mins  
Rating: PG-13

DOLBY 3D



5:30 p.m. & 8:30 p.m.  
Duration: 1 hr 48 mins  
Rating: PG



11:00 p.m.  
Duration: 2 hrs 5 mins  
Rating: PG-13



# MORE TO ENJOY WHILE ONBOARD

## PLAN YOUR NEXT GETAWAY NOW

Our 3 and 4 night Bahamian Cruises are a perfect way to get an instant tropical recharge! Departing from Miami or Port Canaveral, most Bahamian cruises include a stop at Disney's private island, Castaway Cay. Visit the Onboard Sales Desk today and ask about our special onboard booking offer.



## DISNEY VACATION CLUB® GROUP PREVIEW

Want to learn more about taking magical vacations year after year? Please see a Disney Vacation Club representative on Deck 4, Midship, or call 7-2805 from your stateroom phone for more information about our interactive group presentation.



## NASSAU SHOPPING ASHORE INFORMATION

8:00 a.m. to 9:30 a.m. Port and Shopping Desk, Deck 4, Midship. This is your last chance to see Scott and Ashley! Make sure to stop by and see Scott and Ashley to collect your free savings ashore kit and VIP cards before going ashore.



**SENSES**  
SPA & SALON

## PAMPER PACKAGE

50 minute full body Swedish massage, foot and ankle massage, Indian scalp massage and 25 minute facial.  
75 minute pamper for \$149.

*Senses Spa, Deck 11, Forward, Ext 7-1465*

## ALBERTO COLLECTIONS PRESENTS: EMERALDS - "THE GARDEN OF THE EARTH"

Colombian Emeralds possess the deepest shade of green and a magnificent glow, setting the highest standards of quality.

View the magical green fire of our Colombian Emeralds Collection.



**WHITECAPS**

*Deck 3, Forward*

**Shutters**

## PROFESSIONAL PORTRAITS

*Lobby Atrium, Deck 3, Midship*

Lifestyle & Moon Portrait – Six Guests maximum

5:00 p.m. – 6:00 p.m., 7:15 p.m. – 8:30 p.m. & 9:30 p.m. – 10:15 p.m.

Grand Staircase – Groups accommodated

7:15 p.m. – 8:30 p.m.

*\*Please note that photos are available for viewing on our interactive photo kiosks approximately three hours after being taken and are only available for purchase during this cruise.*

## ONBOARD AIRLINE CHECK IN

If you would like to have your boarding passes printed for you onboard and have your luggage taken to the airport for you, 12:00 p.m. today is the last chance to enroll if eligible. Guest Services, Deck 3, Midship.

## WIRELESS INTERNET: KEEPING YOU CONNECTED AT SEA

\$0.75 per minute, or save money by buying blocks of time. \$27.50 for 50 minutes, \$40 for 100 minutes and \$75 for 250 minutes. Wireless information sheets are available at Guest Services, Deck 3, Midship. Please note: Due to satellite connectivity, onboard internet service will be noticeably slower than you may be accustomed to and may at times be interrupted or unavailable.

## FINE DINING RESERVATIONS

Treat yourself to the ultimate culinary experience at sea. At Remy and Palo the enchantment of sea meets with elegance for a once-in-a-lifetime dining experience. Service/Cover charges will apply, please call 7-9734 for reservations to secure the last available spots.



Welcome to Nassau, capital of the Bahamas. It is not too late to book an amazing adventure to Blue Lagoon Island, Atlantis, or you could book a snorkeling adventure. And don't forget, we will be arriving to Disney's Castaway Cay tomorrow, so plan ahead to ensure your first choice of adventure is available. Also, ask our team about the exclusive Getaway Packages, available onboard only.

All Port Adventures meet onboard the ship in Nassau.

Please check your tour tickets for meeting times and locations.

## SHOPPING

### DOONEY & BOURKE CAPTURE THE SEA

The sweet temptations of the sea have inspired these quality bags once again. Our nautical and four ships collections will be a great accessory to add to your Disney Cruise Line memories. White Caps, Deck 3, Forward.

### NEW DISNEY CRUISE LINE COMPASS COLLECTION MERCHANDISE

Visit Sea Treasures and check out the wide selection of merchandise from the new Compass collection. From t-shirts to mugs featuring nautical and Disney Cruise Line themed icons, commemorate your Disney cruise with one of these great souvenirs. Deck 3, Forward.

### TREASURE OF KINGS, ALL THINGS THAT BLING

TAG Heuer has over 150 years of excellence in keeping time and is available here on the Disney Dream. Our Swarovski collection includes rings, necklaces, earrings, and even sparkling pens. All at great duty free prices. White Caps, Deck 3, Forward.

### BURIED TREASURE REVEALED

Discover artwork to brighten your home from Thomas Kinkade, "The Painter of Light". Many of your favorite Disney stories retold by this amazing artist, with a few hidden surprises. Also make your selections for the silent auction which will close on the final night of the cruise. Vista Gallery, Deck 4, Midship.

### HAIR BRAIDING ONBOARD

Add some flair to your hair when you visit a Disney Cruise Line® hair braiding station! Stop by a station today for more information and to learn all about the available braiding styles. Subject to restrictions and availability. Deck 11, Midship.

Due to port regulations, when the ship is docked, the stores will remain closed.

DD0015 02-14-2014 ©DISNEY

## IMPORTANT INFORMATION

### Security Notice

All Guests (including children) who wish to disembark the ship are required to present their Key to the World card at the gangway. A photo ID is also required for those Guests who are 18 years of age or older. Guests under the age of 18 are required to have a parent, guardian or other responsible adult sign an authorization form at the Guest Service Desk if they wish to go ashore unaccompanied or with any adult from another stateroom.

**Sunscreen/Insect Repellent Advisory**  
Use sunscreen and protect against mosquito borne illnesses by applying insect repellent when going ashore.

### Cold and Flu Reminder

Please wash hands frequently and thoroughly, particularly before meals. Contact the Health Center by dialing 7-1923, should anyone in your party become ill.

### Corridor Quiet Hours

As a courtesy to all our Guests, please recognize quiet hallway hours from 10:00 p.m. til 8:00 a.m.

### Inclement Weather

For the safety of all Guests, outdoor events may be changed due to unforeseen weather conditions.

### Environmental Message

With Disney's commitment to the environment, please refrain from throwing anything over the ship's side. Thank you!

### No Reserved Seats Policy

As a courtesy to all our Guests, we kindly advise that the saving of seats is not permitted in the Walt Disney Theatre, and the saving of the sun loungers is not permitted on Deck 11, 12 and 13. Items left unattended will be returned to lost and found at Guest Services, Deck 3, Midship.

### Smoking

For the comfort of our guests the following areas are designated as Smoking areas:

- Deck 13, Forward, port side, by "Currents"
- Deck 12, Aft, port side outdoor area that is accessible through the Meridian Lounge
- Deck 4, Aft, port side from 6:00 p.m. to 6:00 a.m. only (all of Deck 4 is no smoking from 6:00 a.m. to 6:00 p.m.)

Smoking is prohibited inside all Guest staterooms and on stateroom verandahs. Guests found smoking in their staterooms or on their verandahs will be charged a \$250 stateroom recovery fee. Electronic cigarettes may only be used in designated smoking areas.

### Walt Disney Theatre

Theatrical performances may use artificial fog, strobe lights, pyrotechnics and other special effects. For the safety of our performers and the comfort of those around you, the use of any photography, video recording devices or any electronic equipment is prohibited.

### Verandah Safety

Please do not leave any combustible materials on your balcony when not present in your stateroom for safety reasons.



FRIDAY, FEBRUARY 14, 2014 - NASSAU, BAHAMAS

# BUENA VISTA THEATRE

Deck 4 & 5, Forward

CC - Open Captioning

DOLBY 3D



10:15 a.m. Duration: 1 hr 48 mins Rating: PG	12:45 p.m. Duration: 2 hrs 5 mins Rating: PG-13	3:15 p.m. Duration: 1 hr 51 mins Rating: PG-13	5:30 p.m. & 8:30 p.m. Duration: 1 hr 48 mins Rating: PG	11:00 p.m. Duration: 2 hrs 5 mins Rating: PG-13
---	--	---	---	--

## Character Appearances

**PRINCESS GATHERING**  
Lobby Atrium - 9:00 a.m.

**PRINCESS MINNIE**  
Deck 4, Balcony  
9:00 a.m. & 10:15 a.m.

**ALADDIN**  
Deck 4, Balcony - 9:30 a.m.

**TINKER BELL**  
Lobby Atrium (V)  
9:30 a.m., 5:15 p.m.  
& 9:45 p.m.

**PRINCESS ANNA  
OF ARENDELLE**  
Preludes - 9:30 a.m.

**JAKE  
THE NEVERLAND PIRATE**  
Deck 4, Balcony - 3:30 p.m.

**DISNEY FRIENDS**  
Lobby Atrium - 3:30 p.m.

**CAPTAIN HOOK**  
Deck 4, Balcony - 4:00 p.m.  
Preludes - 10:00 p.m.

**PETER PAN**  
Deck 4, Balcony - 4:30 p.m.

**PIRATE MINNIE MOUSE**  
Lobby Atrium (P) - 5:00 p.m.

**PIRATE MICKEY MOUSE**  
Deck 4, Balcony  
5:15 p.m. & 9:30 p.m.

**CAPTAIN JACK SPARROW**  
D Lounge  
5:30 p.m. & 7:30 p.m.

**MICKEY'S PIRATES**  
Deck Stage - 7:45 p.m.

**PIRATE DAISY DUCK**  
Lobby Atrium (P)  
9:30 p.m.

**PIRATE GOOFOY**  
Preludes - 9:30 p.m.

**PIRATE DONALD**  
Lobby Atrium (P)  
10:00 p.m.



(H) Hallway - (S) Starboard Side - (P) Port Side - (V) Vestibule

For details of daily Disney character appearances, refer to the character line on your Navigator Grid, or the digital character board in the Lobby Atrium.

## YOUTH ACTIVITIES THEMED EXPERIENCES

**CLUBHOUSE SERIES**  
focuses on movement and features content which appeals to younger children.

**STORYBOOK SERIES**  
is designed with a strong connection to the Disney classic stories.

**JUMP UP! SERIES**  
includes large group games & movement-oriented activities.

**CREATE & INVENT SERIES**  
will have a tactile focus allowing children to create and admire their work.

**OPEN HOUSE**

activities for families, adults and children of all ages to enjoy together.

**IN THE SPOTLIGHT SERIES**  
focuses on children's stage presence with lots of activities and enthusiasm.

**SOLVE IT! SERIES**  
are less active, but will challenge children with problem/solutions-based activities.

## SHIP DIRECTORY

### YOUTH ACTIVITIES

DISNEY'S OCEANEER CLUB	DECK 5, MID	1:00 PM - 10:30 PM
DISNEY'S OCEANEER LAB	DECK 5, MID	9:00 AM - 1:00 AM
EDGE	DECK 13, MID	10:00 AM - 1:00 AM
VIBE	DECK 4, FWD	11:00 AM - 2:00 AM
IT'S A SMALL WORLD NURSERY	DECK 5, MID	9:00 AM - 12:00 MID

### POOLS & MORE

\* Children under 12 must have adult supervision in pool areas.

AQUADUCK	DECK 12, AFT	9:00 AM - 8:30 PM
DONALD'S POOL	DECK 11, MID	9:00 AM - 6:00 PM
MICKEY'S POOL	DECK 11, MID	6:00 AM - 6:00 PM
MICKEY'S SLIDE	DECK 11, MID	9:00 AM - 6:00 PM
NEMO'S REEF	DECK 11, MID	9:00 AM - 6:00 PM
QUIET COVE POOL	DECK 11, FWD	6:00 AM - 12:00 MID

### RECREATION

GOLF/SPORTS SIMULATORS	DECK 13, AFT	11:00 AM - 6:00 PM
GOOFO GOLF	DECK 13, AFT	8:00 AM - 8:30 PM
GOOFO'S SPORTS DECK	DECK 13, AFT	12:00 MID - 6:00 PM
MIDSHIP DETECTIVE AGENCY	DECK 5, MID	8:00 AM - 11:00 PM
PORT ADVENTURES DESK	DECK 5, MID	8:00 AM - 12:00 PM
		7:00 PM - 8:30 PM
SENSES FITNESS CENTER	DECK 11, FWD	6:00 AM - 10:00 PM

### GENERAL INFORMATION

ARR-CADE	DECK 11, AFT	24 HOURS
BUENA VISTA THEATRE	DECK 4 & 5, MID	SHOWTIMES
DISNEY VACATION CLUB	DECK 4, MID	9:00 AM - 11:00 AM 6:00 PM - 10:00 PM
ONBOARD SALES DESK	DECK 4, MID	8:00 AM - 10:00 AM 3:00 PM - 9:00 PM
GUEST SERVICES	DECK 3, MID	24 HOURS
HAIRBRAIDING	DECK 11, MID	8:00 AM - 10:00 PM
MEDICAL HEALTH CENTER	DECK 1, FWD	9:30 AM - 11:00 AM 4:30 PM - 7:00 PM
PORT & SHOPPING DESK	DECK 4, MID	8:00 AM - 9:30 AM
PRELUDES	DECK 3, FWD	5:45 PM - 6:30 PM 8:00 PM - 8:45 PM
SENSES SPA AND SALON	DECK 11, FWD	8:00 AM - 10:00 PM
SHUTTERS PHOTO GALLERY	DECK 4, MID	5:00 PM - 11:00 PM
WALT DISNEY THEATRE	DECK 3 & 4, FWD	SHOWTIMES

### SHOPPING

MICKEY'S MAINSAIL	DECK 3, FWD	6:30 PM - 11:00 PM
SEA TREASURES	DECK 3, FWD	6:30 PM - 11:00 PM
QUACKS	DECK 11, MID	6:45 PM - 11:00 PM
VISTA GALLERY	DECK 4, MID	6:30 PM - 10:00 PM
WHITE CAPS	DECK 3, FWD	6:30 PM - 11:00 PM
WHOZITS & WHATZITS	DECK 11, MID	6:45 PM - 11:00 PM

DUE TO PORT REGULATIONS, WHEN THE SHIP IS DOCKED, THE STORES MUST REMAIN CLOSED.

### DINNER MENU

Animator's Palate: Pacific Rim Cuisine  
Enchanted Garden: Continental Market  
Royal Palace: French Dinner  
Dining Times: 5:45 p.m. & 8:15 p.m.

### DRINK OF THE DAY

Yellow Bird (Alcoholic)  
Parrot Song (Non Alcoholic)

### WEATHER FORECAST

Today: Partly Sunny  
High: 76°F/24°C  
Tomorrow: Partly Sunny  
High: 72°F/22°C

Evening Attire: Pirate or Cruise Casual

## DINING & LOUNGES

### BREAKFAST

CABANAS CONTINENTAL	DECK 11, AFT	7:00 AM - 7:30 AM
CABANAS	DECK 11, AFT	7:30 AM - 10:30 AM
ENCHANTED GARDEN	DECK 2, MID	8:30 AM - 10:30 AM
ROYAL PALACE	DECK 3, MID	8:00 AM - 9:30 AM

### LUNCH

CABANAS	DECK 11, AFT	12:00 PM - 2:00 PM
CABANAS - PIZZA	DECK 11, AFT	2:00 PM - 4:00 PM
FILLMORE'S FAVORITES	DECK 11, MID	10:30 AM - 6:00 PM
LUIGI'S PIZZA	DECK 11, MID	10:30 AM - 6:00 PM
ROYAL PALACE	DECK 3, MID	12:00 PM - 1:30 PM
TOW MATER'S GRILL	DECK 11, MID	10:30 AM - 6:00 PM

### DINNER

ANIMATOR'S PALATE	DECK 3, AFT	5:45 PM & 8:15 PM
ENCHANTED GARDEN	DECK 2, MID	5:45 PM & 8:15 PM
ROYAL PALACE	DECK 3, MID	5:45 PM & 8:15 PM
CABANAS TABLE SERVICE	DECK 11, AFT	6:30 PM - 8:30 PM
PALO & REMY	DECK 12, AFT	6:00 PM - 9:00 PM

(RESERVATIONS REQUIRED & COVER CHARGE APPLICABLE, DIAL #7-9734)

### LATE NIGHT SNACKS

CABANAS - PIRATE'S BUFFET	DECK 11, AFT	10:45 PM - 11:30 PM
LUIGI'S PIZZA	DECK 11, MID	9:30 PM - 12:30 AM

### ADDED FEATURES

BEVERAGE STATION	DECK 11, MID	24 HOURS
EYE SCREAM	DECK 11, MID	10:30 AM - 12:30 AM
ROOM SERVICE	DIAL 0	24 HOURS

### ENTERTAINMENT - LOUNGES - BARS

Adults must be 21 and older to consume alcoholic beverages.

687 PUB (18+ AFTER 9:00 PM)	DECK 4, AFT	4:30 PM - 12:00 MID
BON VOYAGE	DECK 3, MID	9:00 AM - 11:00 PM
COVE BAR (18+)	DECK 11, FWD	10:30 AM - 11:00 PM
COVE CAFE (18+)	DECK 11, FWD	7:00 AM - 12:00 MID
CURRENTS (18+)	DECK 13, FWD	11:00 AM - 12:00 MID
D LOUNGE	DECK 4, MID	SHOWTIMES
DISTRICT LOUNGE (18+ AFTER 9:00 PM)	DECK 4, AFT	4:00 PM - 12:00 MID
EVOLUTION (18+)	DECK 4, AFT	10:00 PM - 2:00 AM
FROZONE TREATS	DECK 11, MID	11:00 AM - 11:00 PM
MERIDIAN (18+)	DECK 12, AFT	5:00 PM - 12:00 MID
OUTLOOK	DECK 14, MID	
PINK	DECK 4, AFT	5:00 PM - 12:00 MID
SKYLINE (18+)	DECK 4, AFT	5:00 PM - 12:00 MID
VISTA CAFE	DECK 4, MID	7:30 AM - 11:00 PM
WAVES	DECK 12, AFT	12:00 PM - 9:00 PM

Consumers who order raw or partially cooked, ready-to-eat food of animal origin, are hereby informed that the food is not sufficiently cooked to ensure its safety.

All Ashore: Approx. 9:30 a.m.  
All Aboard: 5:45 p.m.

### SHIP'S AGENT IN NASSAU

Nassau, Bahamas  
R.H. Curry & Company, 303 Shirley St.,  
P.O. Box N8168 Nassau, Bahamas  
242-323-8425 or 242-357-9218

### IMPORTANT NUMBERS

Fire/Security: 7-3001  
Medical Emergency: 7-3000  
Health Center: 7-1923



Morning	8:30	8:45	9:00	9:15	9:30	9:45	10:00	10:15	10:30	10:45	11:00	11:15	11:30	11:45	12:00	12:15	12:30	12:45	1:00	1:15	1:30			
FUNNEL VISION	Good Morning America Funnel Vision				Snow White (G) Funnel Vision				Virtual Tours Funnel Vision				The Emperor's New Groove (G) Funnel Vision				Hercules (G) Funnel Vision							
BUENA VISTA THEATRE	Frozen: Sing-A-Long (PG) Duration: 1 Hour 48 Minutes										Saving Mr. Banks (PG-13) Duration: 2 Hours 5 Minutes													
CHARACTER	Princess Gathering Lobby Atrium				Tinker Bell Lobby Atrium (V)																			
	Minnie Dk 4, Balcony				Princess Anna of Arendelle Preludes				Minnie Dk 4, Balcony															
FUN FOR ALL AGES	Last Minute Shopping Advice Port & Shopping Desk <8:00 a.m.				Youth Activities Open House Vibe								Disney Trivia 687 Pub				Chip-It Golf (12+) Lobby Atrium							
	Open House It's A Small World Nursery <Starts at 8:00 a.m.				Youth Activities Open House Disney's Oceaneer Club				Making of the Dream Evolution								Valentines Crafts D Lounge							
	Youth Activities Open House Edge																							
ADULTS	Friends of Bill W. Outlook				Acupuncture Seminar Senses Fitness Center				Arthritis and Back Pain Senses Fitness Center				Relieving Back Pain Senses Spa & Salon				Wine Tasting (21+) Pink				Sports Trivia 687 Pub			
	Wake Up & Stretch Class Senses Fitness Center				Group Cycling Senses Fitness Center				Please refer to your Port Adventures tickets for meeting times and locations.															
VIBE 14-17 YEARS OLD					Youth Activities Open House				Chillin' in Vibe								Ping Pong				Valentine's Card Making			
EDGE 11-14 YEARS OLD	Youth Activities Open House				Animation Cells								Shuffleboard				Valentine's Card Making				Gender Wars			
OCEANEER LAB 3-12 YEARS OLD					Piston Cup Challenge				Stitch's Adventure Squad				Super Sloppy Science				Lunch				Stitch's Adventure Squad			
OCEANEER CLUB 3-12 YEARS OLD	Youth Activities Open House				Journey to Neverland				Mickey's Puzzle Playtime				Heffalump Hunting				Valentine's Card Making				Memory Wall			
Afternoon	1:45	2:00	2:15	2:30	2:45	3:00	3:15	3:30	3:45	4:00	4:15	4:30	4:45	5:00	5:15	5:30	5:45	6:00	6:15	6:30	6:45			
FUNNEL VISION	Pixar Short Films (G) Funnel Vision				Disney Channel on Deck Funnel Vision				Peter Pan (G) Funnel Vision				The Little Mermaid (G) Funnel Vision											
BUENA VISTA THEATRE	Thor: The Dark World (PG-13) Duration: 1 Hour 51 Minutes										Frozen (PG) Duration: 1 Hour 48 Minutes													
CHARACTER					Disney Friends Lobby Atrium				Cpt. Hook Dk 4, Balcony				Peter Pan Dk 4, Balcony				Captain Jack Sparrow D Lounge							
					Jake Dk 4, Balcony								Pirate Minnie Mouse Lobby Atrium (P)											
FUN FOR ALL AGES	Duration: 1 hour 48 minutes Rating: PG Walt Disney Theatre				Deck Stage				Bingo Pre Sales				\$5,000 Mega Jackpot BINGO D Lounge				Jewish Sabbath Outlook				Walt Disney Theatre			
	D Lounge				Pirate Trivia 687 Pub								Disney Vacation Club Group Preview Evolution				Live Piano with Tom Scott District Lounge				A Pirate's Life For Me D Lounge			
ADULTS	Art of The Theme Show Tour Meet at Meridian				Tequila & Margarita Tasting (21+) District Lounge				Live Music with Ravon Rhoden Deck 12, Forward				Club 18*21 - X-Born Knead™ 687 Pub				TV Tunes Trivia 687 Pub							
	Increase Your Metabolism Senses Spa & Salon				Making of the Dream Evolution				Walking In Comfort Senses Fitness Center				Acupuncture Seminar Senses Fitness Center				Yoga Senses Fitness Center							
VIBE 14-17 YEARS OLD	Smoothie Hour				Pool Party				DJ Training				Super Sloppy Science				Sports Deck Fun				Picture This			
EDGE 11-14 YEARS OLD	Ice Cream Social				Animation Antics				Anyone Can Cook Cupcakes				Sports Deck Fun				Mini Golf				Youth Activities Open House			
OCEANEER LAB 3-12 YEARS OLD	Youth Activities Open House				Get the Hook				Valentine's Card Making				Magic Show								A Pirate's Life For Me			
	Super Sloppy Science																							
OCEANEER CLUB 3-12 YEARS OLD	Cruisin' with Crush				Valentine's Card Making				Aloha Luau				Tinker Bell's Talent Show				So You Want to be a Pirate?				Dinner			
																					Once Upon a Time			
Evening	7:00	7:15	7:30	7:45	8:00	8:15	8:30	8:45	9:00	9:15	9:30	9:45	10:00	10:15	10:30	10:45	11:00	11:15	11:30	11:45	12:00			
FUNNEL VISION					Mickey's PITC Funnel Vision				Muppet Treasure Island (G) Funnel Vision				Buccaneer Blast & Club Pirate Funnel Vision				Pirates of the Caribbean I (PG-13) Funnel Vision							
BUENA VISTA THEATRE	Frozen (PG) Duration: 1 Hour 48 Minutes										Saving Mr. Banks (PG-13) Duration: 2 Hours 5 Minutes													
CHARACTER	Captain Jack Sparrow D Lounge								Daisy Lobby Atrium (P)				Tinker Bell Lobby Atrium (V)				Donald Lobby Atrium (P)							
									Goofy Preludes				Cpt. Hook Preludes											
FUN FOR ALL AGES	Pirate Games Deck Stage, Deck 11, Midship				Walt Disney Theatre				A Pirate's Life For Me D Lounge				Buccaneer Blast followed by Club Pirate Deck Stage, Deck 11, Midship				Live Music with Ravon Rhoden Deck 12, Forward							
									Pirate Trivia D Lounge				Live Music with Ravon Rhoden Deck 12, Forward											
ADULTS	Live Music with Ravon Rhoden Deck 12, Forward				NCAA Basketball: Arizona Wildcats vs. Arizona State Sun Devils 687 Pub (Subject to Satellite Availability)				Krazy Karaoke Followed by Club DJ Jon Evolution				Tom Scott LIVE District Lounge				Live Music with the Metrotones District Lounge							
VIBE 14-17 YEARS OLD	Youth Activities Open House				Aquaduck Fun				Ship Factor								Fireworks				Mix and Match			
EDGE 11-14 YEARS OLD	Karaoke				Aquaduck Fun				Magic Show				Fireworks								GAGA Ball			
OCEANEER LAB 3-12 YEARS OLD	Anyone Can Cook				Pirates of the Caribbean: Tides of Fortune				Magic PlayFloor				Super Sloppy Science				Monster's Inc: Open "Mike" Night							
OCEANEER CLUB 3-12 YEARS OLD	Little Einstein's Adventure				So You Want to be a Pirate?								Pluto's Pajama Party											

Symbol for activities that will be repeated during the cruise



FOLD

Fold along the dotted lines and take me with you so you don't miss any of the fun!

FOLD

IN THE SPOTLIGHT SERIES  
SOLVE IT! SERIES

JUMP UP! SERIES  
CREATE & INVENT SERIES

OPEN HOUSE

CLUBHOUSE SERIES  
STORYBOOK SERIES