

PERSONAL NAVIGATOR

TUESDAY, JANUARY 7, 2014

Sunrise: 6:50 a.m. Sunset: 5:32 p.m.
Evening Attire: Cruise Casual

Tuesday: Overcast High: 70°F/21°C

DAY AT SEA

Disney DREAMS

AN ENCHANTED CLASSIC

In this spectacular fantasy, a little girl discovers the power of her dreams. Fly through the air with Peter Pan and your imagination as many Classic Disney Characters spring to life. With a little Faith, Trust and Pixie Dust you'll see that your dreams can come true!

WALT DISNEY THEATRE
DECK 4, FORWARD

2:00 p.m., 6:15 p.m. & 8:30 p.m.

As a courtesy to all Guests, we kindly advise that the saving of seats is not permitted in the Walt Disney Theatre.



Assistance available at the entrance to the Walt Disney Theatre 30 minutes prior to show time.

Did You Know?

- The 1,967 miles of cable on our ship would be enough to run an extension cord between Austin and Detroit.
- Our ship is 964 feet long, only 22 feet less than the height of the Eiffel Tower.
- The ship can make 500,000 gallons of fresh water from sea water everyday while cruising.

Tonnage: 83,308 gross, 53,899 net

Length Overall: 294m / 964ft

(height of Eiffel Tower is 986ft)

Maximum Speed: 26 knots (30 miles per hour)

Important Dates

Keel Laid: May 15, 1997

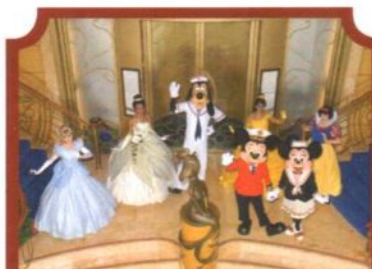
Launch Date: July 14, 1999

Inaugural Cruise: August 15, 1999

Debarb Talk Broadcast

Important information regarding disembarkation procedures for Galveston and your journey home will be covered in this debarkation briefing. The broadcast will be shown continuously on channel 223 of your stateroom television for your convenience.

Thank you in advance for completing your comment card.



'TIL WE MEET AGAIN

The world-famous Disney Characters and some of your new friends from the Disney Wonder stage shows bid you a charming farewell.

Lobby Atrium,
Deck 3, Midship,
10:00 p.m.

Don't Miss:

Disney's Innovations: Theme Parks (18+)
Diversions, Deck 3, Forward - 9:30 a.m.

Join us for our presentation showing the "Top 10" greatest innovations that the Walt Disney Company has introduced to theme parks.

Captain's Corner (18+)

Outlook Cafe, Deck 10, Midship - 10:30 a.m.

Join the Captain for an informal Q&A session about the operation of the Disney Wonder.

So You Think You Know Your Family?

Studio Sea, Deck 4, Midship - 7:30 p.m.

This fun-filled family game show is always full of surprises. Find out how well you know, or don't know your family!

80's Flashback

Wavebands, Deck 3, Forward - 11:00 p.m.

The 80's are back! Join your Cruise Staff team, in testing your 80's knowledge in this high energy 80's revival.



Turn your magical vacation memories into an impressive keepsake with a personalized, one-of-a-kind PhotoBook. Fill every page with wonderful memories of your family during this cruise.

Visit Shutters today, as supplies are limited and orders will close at 7:00 p.m. on the last day of the cruise.

**Offer valid per stateroom only. Terms and conditions apply.
The PhotoBook is only available for purchase during this cruise.*

DINNER MENU

Animator's Palate: Show Dinner
Parrot Cay: Island Dinner
Triton's: French Dinner

DRINK OF THE DAY

Sea Breeze (Alcoholic)
Banana Lime Ginger (Non Alcoholic)

IMPORTANT NUMBERS

Fire/Security: 7-3001
Medical Emergency: 7-3000
Health Center: 7-1923

FUN FOR ALL AGES HIGHLIGHTS



WAKE UP WITH DISNEY JUNIOR

Promenade Lounge, Deck 3, Aft - 9:00 a.m.

What happens when you experience unlimited fun with your favorite Disney Junior shows? You get an exciting dance party designed especially for preschoolers ages seven and under.



JACK-JACK'S INCREDIBLE DIAPER DASH

Lobby Atrium, Deck 3, Midship - 11:30 a.m.

Calling all baby Cruisers! It's time to take to the mat to see who's the fastest crawler of the seven seas! Register your baby 15 minutes prior to the big race.



DISNEY CHANNEL ON DECK

Goofy's Pool Stage, Deck 9, Midship - 12:30 p.m.

Don't change that channel! It's time for a Disney Channel afternoon poolside! Your cruise staff will host an exciting day of games and contests in between your favorite Disney Channel shows! So sit back, relax, and enjoy the sun!

ICE CARVING

Goofy's Pool Stage, Deck 9, Midship - 1:30 p.m.

Amazed by those ice sculptures you find around the ship? See how our Master Carver chisels up a work of art in record time.



CHIP-IT GOLF (12+)

Lobby Atrium, Deck 3, Midship - 4:15 p.m.

It's par for the course for our Guests 12 and older to compete on our special "greens" in this fun tournament.



FRIENDSHIP ROCKS

Walt Disney Theatre, Deck 4, Forward - 5:00 p.m.

Come and celebrate with all the children from the Oceaneer Club and Oceaneer Lab in the Jammin' performance of Friendship Rocks! You won't want to miss any of the fun.

ADULT ACTIVITY HIGHLIGHTS



VISTA SPA FITNESS CLASSES & SEMINARS

Sunrise Stretch - Vista Spa Fitness Center - 7:00 a.m.

Body Sculpt Boot Camp (Nominal Fee) - Vista Spa Fitness Center - 8:30 a.m.

Tour De Cycle - Vista Spa Fitness Center - 9:00 a.m.

Seminar: Chinese Herbs - Vista Spa Fitness Center - 9:30 a.m.

Improving Your Posture-Walk in Comfort - Vista Spa Fitness Center - 11:00 a.m.

Secrets To A Flatter Stomach - Outlook Cafe - 2:00 p.m.

Acupuncture Demonstration - Outlook Cafe - 3:15 p.m.

Complimentary Footprint Analysis - Vista Spa Fitness Center - 4:00 p.m.

TASTING CLASSES

Chocolate and Wine Pairing (21+) - Cadillac Lounge - 12:00 p.m.

Mixology (21+) - Cadillac Lounge - 2:00 p.m.

Beer Tasting (21+) - Cadillac Lounge - 4:00 p.m.

Cognac Tasting (21+) - Outlook Cafe - 10:30 p.m.

Please make reservations for tastings at Guest Services for a nominal fee.

Tasting Seminars are only for Guests 21 and Older.

LUNCH
Parrot Cay, Deck 3, Aft - 12:15 p.m.

WII CHALLENGE
Diversions, Deck 3, Forward - 5:00 p.m.

FAREWELL
Diversions, Deck 3, Forward - 10:00 p.m.

DISNEY'S ART OF ENTERTAINING: DAZZLING DESSERT

Studio Sea, Deck 4, Midship - 10:15 a.m.

Learn to create mouth-watering sweets like a professional pastry chef with easy to follow decadent recipes.

80'S FLASHBACK

Wavebands, Deck 3, Forward - 11:00 p.m.

The 80's are back! Join your Cruise Staff team, in testing your 80's knowledge in this high energy 80's revival.



\$10,000 MEGA JACKPOT BINGO

Wavebands, Deck 3, Forward

Card Sales - 10:45 a.m.

Game Starts - 11:00 a.m.

It's Big, it's Massive, it's Supersized! It's \$10,000 MEGA Jackpot Bingo! Take home \$10,000 if you can cover your card in 46 numbers or less. If not, we carry on to play for the biggest cash prize of the session.

FINAL JACKPOT BINGO

Wavebands, Deck 3, Forward

Card Sales - 3:00 p.m.

Game Starts - 3:30 p.m.

The snowball jackpot **MUST BE WON** at this final session! Beat the line and get your cards early. Who will be the lucky winner? It could be you!

YOUTH ACTIVITIES HIGHLIGHTS

DINE & PLAY

A convenience for families dining at 8:15 p.m., our Youth Activities Counselors will be available at 9:15 p.m. at the entrance of Triton's, Parrot Cay and Animator's Palate dining rooms to bring registered children to join the fun in the Oceaneer Club and Oceaneer Lab.



Deck 5, Aft (7-18500) 9:00 a.m. - 11:00 p.m.

Infants and Toddlers can enjoy toys and activities at Flounder's Reef Nursery. Reservations are first come, first serve so please stop by!



Deck 5, Midship (7-1440) 9:00 a.m. - 12:00 mid
(3 - 12 years old)

ALOHA LUAU

11:00 a.m.

It's party time, Hawaiian style! Come join us for a Luau experience and learn how to dance like Lilo & Stitch.

GLOW JAM

9:45 p.m.

Join us for a glow-in-the-dark party with lots of games, fun and dancing for all.



Deck 5, Midship (7-1445) 9:00 a.m. - 12:00 mid
(3 - 12 years old)

SHAKE IT UP!

9:30 a.m.

You've seen the show; now come learn the moves to one of the most popular dances of the summer!

GOOFY FILES

2:00 p.m.

This fascinating activity takes you into the invisible world of forensics where you will discover different ways to identify the suspect of a crime.



Deck 2, Midship (7-5810) 9:00 a.m. - 12:00 mid
(11 - 14 years old)

BRAINS AND BRAWNS

3:00 p.m.

You will compete against each other to solve clues, take part in physical challenges, and reach the finish first.

HOW WELL DO YOU KNOW YOUR COUNSELOR?

10:00 p.m.

Do you think you know all there is to know about your counselors? Come test out your knowledge with all of your friends!



Deck 11, Midship (7-1456) 11:00 a.m. - 1:00 a.m.
(14 - 17 years old)

SHIP FACTOR

2:30 p.m.

Ready for one of the toughest challenge competitions onboard?

PUMP IT UP

9:00 p.m.

Join us in the Fitness Center for a Teen Only workout. Meet in Vibe to join in!

BUENA VISTA THEATRE

Today's Movies

DOLBY 3D



9:30 a.m.
Duration:
1 hr 43 mins
Rating: G

OC - Open Captioning



11:45 a.m.
Duration:
2 hrs 5 mins
Rating: PG-13

DOLBY 3D



2:30 & 10:30 p.m.
Duration:
1 hr 48 mins
Rating: PG



5:15 & 8:00 p.m.
Duration:
1 hr 51 mins
Rating: PG-13

So You Think You Know Your Family?

FAMILY GAME SHOW

This fun-filled family game show is always full of surprises. Find out how well you know, or don't know your family!

**Studio Sea,
Deck 4, Midship,
7:30 p.m.**

ADULT VARIETY ACT

Featuring the Comedy and Magic of Freddy Fusion, as he entertains you in this adult exclusive show.

**Wavebands (18+),
Deck 3, Forward,
10:30 p.m.**

YOUTH ACTIVITIES OPEN HOUSE

Open House is an opportunity for all to come and participate in a variety of exciting activities and free time in the Oceaneer Club, Oceaneer Lab, Flounder's Reef Nursery, Vibe and Edge throughout the cruise. During these times secured programming will still be offered in the other venue for those looking to check their children into care.

Disney's Oceaneer Club: 9:00 a.m. - 10:30 a.m. **Edge:** 9:00 a.m. - 12:00 p.m.
Vibe: 5:30 p.m. - 7:00 p.m. **Edge:** 6:00 p.m. - 8:00 p.m.

MORE TO ENJOY WHILE ONBOARD



DISNEY VACATION CLUB® GROUP PREVIEW

Want to learn more about taking magical vacations year after year? Please see a Disney Vacation Club representative on Deck 4, Midship, or call 7-2805 from your stateroom phone for more information about our interactive group presentation.



VISIT THE FUTURE CRUISE SALES DESK EARLY TODAY

Avoid the evening rush and visit the Future Cruise Sales Desk early for your last chance to save 10% on your next cruise, receive up to a \$200 onboard credit, and pay a reduced deposit. Future Cruise Sales Desk, Deck 4, Midship.



PALO RESERVATIONS

Dine in our adult-exclusive restaurant with a 5-star dining experience. Reservations and evening attire are required. Call 7-6843



VISTA SPA

Deck 9, Forward - Phone: 7-1465

LAST DAY TREAT

Our Most Popular 75-minute Spa Package includes all of the following: Full Body relaxing Swedish massage, Dry skin brush, full body exfoliation, foot and ankle massage, scalp massage and refreshing spa facial.

Today Only: For \$139

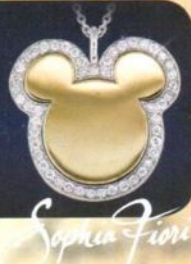
TODAY'S SHOPPING SPECIAL

Stop by Treasure Ketch to try on the world's most memorable white diamond pieces and commemorate your cruise.

Now introducing, the new Disney inspired jewelry collection

by SOPHIA FIORI

ONLY AVAILABLE ONBOARD



TREASURE KETCH

Deck 4, Forward



GET THE PICTURE!

Order a Get the Picture! photo disc and share your vacation memories digitally! No need to decide which photos to take home now, select your photos from the comfort of your home. Print, send and share your photos easily! Hurry, as supplies are limited.

**Offer valid per stateroom only. Terms and conditions apply.
Photos captured on your vacation are only available for purchase during this cruise.*

QUARTER MASTERS ARCADE

Can you unlock the Grand MASTER KEY? Challenge yourself and discover the rewards that await you including cool Headphones, Underwater Cameras and Disney Princesses Prize Pack, come over to Deck 9, Midship, Quarter Masters Arcade and you could win a treasure.

WIRELESS INTERNET: KEEPING YOU CONNECTED AT SEA

\$0.75 per minute or save money by buying blocks of time. \$27.50 for 50 minutes, \$40 for 100 minutes and \$75 for 250 minutes. Wireless information sheets are available at Guest Services, Deck 3, Midship, Internet Cafe, Deck 3, Aft, Cove Cafe, Deck 9, Midship and Outlook Cafe, Deck 10, Midship.

Due to the technology involved and satellite connectivity, the onboard internet service will be noticeably slower than you may be accustomed to and might at times be interrupted or unavailable.

EXPRESS CHECK OUT

If you have a credit card on file, you qualify for express check out. No need to visit Guest Services to settle your account.

EXPRESS WALK OFF

Carry all your luggage and be the first to get off the ship once the ship has been cleared in Galveston.

SHOPPING

OFFICER PIN TRADING

Come and trade pins with the Officers of the Disney Wonder. Lobby Atrium, Deck 3, Midship, between 7:15 p.m. and 8:00 p.m.

ART GALLERY - SILENT ART AUCTION

Place your bid on Inknings, Line Art and other pieces. Auction starts at 1:00 p.m. - 4:00 p.m. Visit your Gallery Host between 1:00 p.m. - 4:00 p.m. and 7:00 p.m. - 9:00 p.m. in the Art Gallery, Deck 4, Midship for more information.

SOPHIA FIORI LAST OPPORTUNITY

This is your last chance to get your hands on our fantastic collection of Sophia Fiori Couture diamond jewelry. Drop in to the Treasure Ketch and save up to 50% off your purchase and free sizing on any Sophia Fiori ring! These exquisite diamonds are not available back home so take advantage of these stunning deals and do not miss out!

DESIGNER WATCHES

Visit Treasure Ketch and choose from a wide assortment of designer watches including Fossil, Kenneth Cole and DKNY.

GREAT OFFERS WHEN YOU SHOP ONBOARD

Stop by Treasure Ketch, Deck 4 Forward, and receive a sterling silver Chamilia Ship Charm for \$30.00 with any merchandise purchase of \$40.00 or more. While supplies last. Offer not valid on previous purchases. Offer subject to change without notice.

CAPTAINS SIGNING

Have your cruise mementos signed by the Master of the Disney Wonder! Treasure Ketch, Deck 4, Forward at 12:15 p.m.

Due to port regulations, when the ship is docked, the stores will remain closed.

IMPORTANT INFORMATION

Security Notice

All Guests (including Children) who wish to disembark or embark the ship are required to present their Key to the World card at the gangway. A photo ID is also required for those Guests who are 18 years of age or older. Guests under the age of 18 are required to have a parent, guardian or other responsible adult sign an authorization form at the Guest Service Desk if they wish to go ashore unaccompanied or with any adult from another stateroom.

Sunscreen/Insect Repellent Advisory
Please remember to use plenty of sunscreen and mosquito repellent when venturing ashore.

Cold and Flu Reminder

Please wash hands frequently and thoroughly, particularly before meals. Contact the Health Center by dialing 7-1923, should anyone in your party become ill.

Inclement Weather

For the safety of all Guests, outdoor events may be changed due to unforeseen weather conditions.

Corridor Quiet Hours

As a courtesy to all our Guests, please recognize quiet hallway hours from 10:00 p.m. til 8:00 a.m.

Environmental Message

With Disney's commitment to the Environment please refrain from throwing anything over the Ship's side. Thank you.

No Reserved Seats Policy

As a courtesy to all Guests we kindly advise that the saving of seats is not permitted in the Walt Disney Theatre, and the saving of the sun loungers is not permitted on Deck 9 and 10. Items left unattended will be returned to lost and found at Guest Services, Deck 3, Midship.

Smoking

For the comfort of our guests, the following areas are designated as smoking areas:
• Deck 10, forward, Starboard side
• Deck 9, forward, Starboard side at Quiet Cove
• Deck 4, aft, port side from 6:00 p.m. to 6:00 a.m. only (all of Deck 4 is non-smoking from 6:00 a.m. to 6:00 p.m.)
Smoking is prohibited inside all guest staterooms and on stateroom verandahs. Guest found smoking in their staterooms or on their verandahs will be charged a \$250 stateroom recovery fee. Electronic cigarettes may only be used in designated smoking areas.

Walt Disney Theatre

Theatrical performances may use artificial fog, strobe lights, pyrotechnics and other special effects. For the safety of our performers and the comfort of those around you, the use of any photography or video recording device or any electronic equipment is prohibited.

Verandah Safety

Please do not leave any combustible materials on your balcony when not present in your stateroom for safety reasons.