

# PERSONAL NAVIGATOR

SATURDAY, JANUARY 18, 2014

Sunrise: 7:13 a.m. Sunset: 6:02 p.m.

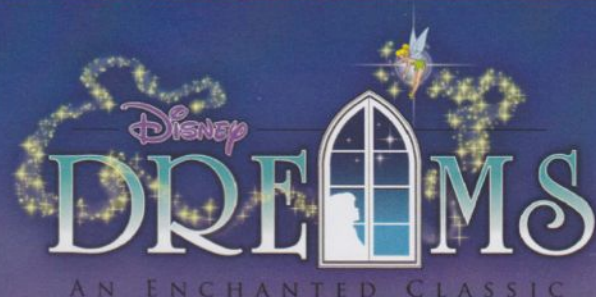
Evening Attire: Cruise Casual

All Ashore: Approx: 11:00 a.m.

All Aboard: 6:00 p.m.

Saturday: Sunny High: 68°F/20°C

KEY WEST



AN ENCHANTED CLASSIC

In this spectacular fantasy, a little girl discovers the power of her dreams. Fly through the air with Peter Pan and your imagination as many Classic Disney Characters spring to life. With a little Faith, Trust and Pixie Dust you'll see that your dreams can come true!

WALT DISNEY THEATRE

DECK 4, FORWARD

6:15 p.m. & 8:30 p.m.



As a courtesy to all Guests, we kindly advise that the saving of seats is not permitted in the Walt Disney Theatre.



Assistance available at the entrance to the Walt Disney Theatre 30 minutes prior to show time.

## Key West Port Information

The U.S. government acquired Key West from Spain in the early 1800s. During those days, most of the isolated islanders made their living as wreckers and pirates, diving for the booty from ships that wrecked on the coral reefs offshore.

In the early 1930's Key West was recognized as a resort town and hotels, restaurants, bars sprang up around the island. For about 6 months business was wonderful until a hurricane tore up the railroad and rendered the island helpless.

The State of Florida and the Federal Government took over and began the work of rehabilitation, particularly directed toward development of tourist facilities and attractions.

The number one business here is tourism and a laid back kind of fun. But only in Key West does the sun shine the brightest when it sets.

Everyone gathers for the never planned, always varied Sunset Celebration on the Mallory Dock. Once the sun is safely tucked away by jugglers, mimes, musicians and street artists, the city moves to a different beat.

### Docking:

The Disney Wonder will tie up at Mallory Square. The port is west of the island and is within walking distance of Old Town, the concentration of streets with the most shops, restaurants, bars and sights.



'TIL WE MEET AGAIN

The world-famous Disney Characters and some of your new friends from the Disney Wonder stage shows bid you a charming farewell.

Lobby Atrium,  
Deck 3, Midship,  
10:00 p.m.

## Don't Miss:

### Chip-It Golf (12+)

Lobby Atrium, Deck 3, Midship - 4:00 p.m.

It's par for the course for our Guests 12 and older to compete on our special "greens" in this fun tournament.

### Who Wants to be a Mouseketeer?

Studio Sea, Deck 4, Midship - 7:30 p.m.

Your chance to get in to the "hot seat" and win limited edition prizes. Or, play along as part of our live studio audience.

### 80's Flashback (18+)

Wavebands, Deck 3, Forward - 11:00 p.m.

The 80's are back! Join your Cruise Staff team, in testing your 80's knowledge in this high energy 80's revival.

### IMPORTANT IMMIGRATION NOTICE

Please be reminded that, as per US Immigration Law, ALL Guests aboard the Disney Wonder will be required to present themselves to Customs & Border Protection officials today upon our arrival in Key West. Time and location information will be delivered to your stateroom, however please remember to bring your Key To The World Card and citizenship documents.

Disney Cruise Line

PORT ADVENTURES

Please check your tour tickets for meeting times and locations. Visit the Port Adventures Desk, Deck 3, Midship for any questions.

## DINNER MENU

Animator's Palate: Show Dinner  
Parrot Cay: Island Dinner  
Triton's: French Dinner

## DRINK OF THE DAY

Key Lime Margarita (Alcoholic)  
Mint Tea Fruit Punch (Non Alcoholic)

### IMPORTANT NUMBERS

Fire/Security: 7-3001  
Medical Emergency: 7-3000  
Health Center: 7-1923



## FUN FOR ALL AGES HIGHLIGHTS



### WAKE UP WITH DISNEY JUNIOR

*Promenade Lounge, Deck 3, Aft - 9:30 a.m.*

What happens when you experience unlimited fun with your favorite Disney Junior shows? You get an exciting dance party designed especially for preschoolers ages seven and under.

### CRUISIN' FOR TRIVIA

*Promenade Lounge, Deck 3, Aft - 10:00 a.m.*

Navigate your way through a round of questions testing your general knowledge.

### FAMILY CRAFTS

*Promenade Lounge, Deck 3, Aft - 2:00 p.m.*

Create a fun souvenir with your Cruise Staff that is yours to keep.

### DISNEY TRIVIA

*Promenade Lounge, Deck 3, Aft - 3:00 p.m.*

Navigate your way through another round of questions to test how much you really know about Disney.



### CHIP-IT GOLF (12+)

*Lobby Atrium, Deck 3, Midship - 4:00 p.m.*

It's par for the course for our Guests 12 and older to compete on our special "greens" in this fun tournament.



### FRIENDSHIP ROCKS

*Walt Disney Theatre, Deck 4, Forward - 5:00 p.m.*

Come and celebrate with all the children from the Oceaneer Club and Oceaneer Lab in the Jammin' performance of Friendship Rocks! You won't want to miss any of the fun.

### FAREWELL KARAOKE

*Studio Sea, Deck 4, Midship - 10:30 p.m.*

Bring along the entire family for one more round of karaoke. This is your last opportunity to grab the mic and sing along to your favorite song.



## ADULT ACTIVITY HIGHLIGHTS



### VISTA SPA FITNESS CLASSES & SEMINARS

*Sunrise Stretch - Vista Spa Fitness Center - 7:00 a.m.*

*Body Sculpt Boot Camp (Nominal Fee) - Vista Spa Fitness Center - 8:30 a.m.*

*Tour De Cycle - Vista Spa Fitness Center - 9:00 a.m.*

*Seminar: Chinese Herbs - Outlook Cafe - 9:30 a.m.*

*Seminar: Improving Your Posture - Vista Spa Fitness Center - 11:00 a.m.*

*Acupuncture Demonstration - Outlook Cafe - 3:15 p.m.*

*Complimentary Footprint Analysis - Vista Spa Fitness Center - 4:00 p.m.*

### TASTING CLASSES

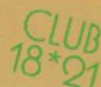
*Chocolate and Wine Pairing (21+) - Cadillac Lounge - 12:00 p.m.*

*Martini Tasting (21+) - Cadillac Lounge - 2:00 p.m.*

*Tequila & Margarita Tasting (21+) - Cadillac Lounge - 4:00 p.m.*

*Beer Tasting (21+) - Outlook Cafe - 10:30 p.m.*

Please make reservations for tastings at Guest Services for a nominal fee. Tasting Seminars are only for Guests 21 and Older.



### FAREWELL

*Diversions, Deck 3, Forward - 10:00 p.m.*

### LIVE PIANO WITH TIM MOSS

*Cadillac Lounge, Deck 3, Forward - 7:30, 9:30, 10:30 & 11:30 p.m.*

Join Tim Moss as he plays live piano for your listening pleasure, including a featured set "Tribute to the Rat Pack" at 7:30 p.m.

### WONDER QUEST

*Wavebands, Deck 3, Forward - 10:30 p.m.*

Enjoy the wildest and wackiest scavenger team event on the seven seas!

### 80'S FLASHBACK

*Wavebands, Deck 3, Forward - 11:00 p.m.*

The 80's are back! Join your Cruise Staff team, in testing your 80's knowledge in this high energy 80's revival.

## \$10,000 FINAL MEGA JACKPOT BINGO

**Wavebands, Deck 3, Forward**  
**Card Sales - 7:15 p.m.**  
**Game Starts - 7:30 p.m.**

It's Big, it's Massive, it's Supersized! It's \$10,000 MEGA Jackpot Bingo! Take home \$10,000 if you can cover your card in 46 numbers or less. If not, we carry on to play for the biggest cash prize of the session!



# YOUTH ACTIVITIES HIGHLIGHTS

## DINE & PLAY

A convenience for families dining at 8:15 p.m., our Youth Activities Counselors will be available at 9:15 p.m. at the entrance of Triton's, Parrot Cay and Animator's Palate dining rooms to bring registered children to join the fun in the Oceaneer Club and Oceaneer Lab.



**Deck 5, Aft (7-18500) 9:00 a.m. - 11:00 p.m.**

Infants and Toddlers can enjoy toys and activities at Flounder's Reef Nursery. Reservations are first come, first served so please stop by!



**Deck 5, Midship (7-1440) (3 - 12 years old) 9:00 a.m. - 12:00 mid**

### ALOHA LUAU

11:00 a.m.

It's party time, Hawaiian style! Come join us for a Luau experience and learn how to dance like Lilo & Stitch.

### WHERE'S TINK?

7:15 p.m.

Tinker Bell is hiding and we need your help to follow clues around Captain Hook's ship to find her.



**Deck 5, Midship (7-1445) (3 - 12 years old) 9:00 a.m. - 12:00 mid**

### LAVA FLOW

11:15 a.m.

Build your own volcano and watch it erupt as you learn about the physics of volcanos.

### PISTON CUP CHALLENGE

7:30 p.m.

It's Dinoco time and you're part of the pit crew! Design your own race car and see if you've got what it takes to end up in the Winner's Circle!



**Deck 2, Midship (7-5810) (11 - 14 years old)**

**10:00 a.m. - 12:00 mid**

### BRAINS AND BRAUNS

3:00 p.m.

You will compete against each other to solve clues, take part in physical challenges, and reach the finish first.

### HOW WELL DO YOU KNOW YOUR COUNSELOR?

10:00 p.m.

Do you think you know all there is to know about your counselors? Come test out your knowledge with all of your friends!



**Deck 11, Midship (7-1456)**

**(14 - 17 years old) 12:00 p.m. - 1:00 a.m.**

### SHIP FACTOR

2:30 p.m.

Ready for one of the toughest challenge competitions onboard?

### PUMP IT UP

9:00 p.m.

Join us in the Fitness Center for a Teen Only workout. Meet in Vibe to join in!

# BUENA VISTA THEATRE

## Today's Movies

**DOLBY 3D**



1:00 p.m.  
Duration:  
1 hr 43 mins  
Rating: G



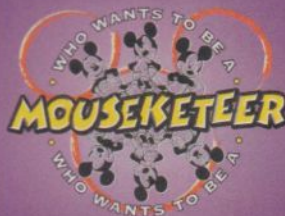
3:15 p.m.  
Duration:  
1 hr 48 mins  
Rating: PG



5:30 & 8:00 p.m.  
Duration:  
1 hr 51 mins  
Rating: PG-13



10:30 p.m.  
Duration:  
1 hr 48 mins  
Rating: PG



## FAMILY GAME SHOW

Your chance to get into the world famous hot seat and win an exclusive prize in our version of the well known television game show.

**Studio Sea,  
Deck 4, Midship,  
7:30 p.m.**



## ADULT THEME NIGHT

**THE 80'S ARE BACK!**  
Join your Cruise Staff team, in testing your 80's knowledge in this high energy 80's revival.

**WaveBands (18+),  
Deck 3, Forward,  
11:00 p.m.**

## YOUTH ACTIVITIES OPEN HOUSE

Open House is an opportunity for all to come and participate in a variety of exciting activities and free time in the Oceaneer Club, Oceaneer Lab, Flounder's Reef Nursery, Vibe and Edge throughout the cruise. During these times secured programming will still be offered in the other venue for those looking to check their children into care.

**Disney's Oceaneer Club: 9:00 a.m. - 10:30 a.m.    Edge: 10:00 a.m. - 12:00 p.m.**  
**Vibe: 5:30 p.m. - 7:00 p.m.    Edge: 6:00 p.m. - 8:00 p.m.**



# MORE TO ENJOY WHILE ONBOARD

## DISNEY VACATION CLUB® GROUP PREVIEW

Want to learn more about taking magical vacations year after year? Please see a Disney Vacation Club representative on Deck 4, Midship, or call 7-2805 from your stateroom phone for more information about our interactive group presentation.

## PLAN YOUR NEXT DISNEY CRUISE LINE VACATION!

Book your next cruise today for the best availability and pricing. You'll save 10%, receive up to a \$200 onboard credit, and pay a reduced deposit! Visit the Future Cruise Sales Desk, Deck 4, Midship, or call 7-2848.

## PORT & SHOPPING INFORMATION

Do not miss the savings in Key West! Now is your chance to collect that perfect piece of tanzanite, or upgrade to the diamond you've always dreamt of customs exempt! See Maureen at her desk between 9:15 a.m. - 10:15 a.m. for last minute shopping advice, VIP cards and shopping maps!

## QUARTER MASTERS ARCADES

You can drive a Hummer, be The Fast and The Furious, plus hop on a Crazy Taxi with no license required! All this at Quarter Masters Arcade, located on Deck 9, Midship.

## WIRELESS INTERNET: KEEPING YOU CONNECTED AT SEA

\$0.75 per minute or save money by buying blocks of time. \$27.50 for 50 minutes, \$40 for 100 minutes and \$75 for 250 minutes. Wireless information sheets are available at Guest Services, Deck 3, Midship, Internet Cafe, Deck 3, Aft, Cove Cafe, Deck 9, Midship and Outlook Cafe, Deck 10, Midship.

**Due to the technology involved and satellite connectivity, the onboard internet service will be noticeably slower than you may be accustomed to and might at times be interrupted or unavailable.**

## DEBARK TALK BROADCAST

Important information regarding disembarkation procedures for Miami and your journey home will be covered in this debarkation briefing. The broadcast will be shown continuously on channel 22-3 of your stateroom television for your convenience. Thank you in advance for completing your comment card.



## VISTA SPA

Deck 9, Forward - Phone: 7-1465

### LADIES AND GENTS TREAT

All ladies and gents are invited to spend a day in the spa. Get spoiled with a 50 minutes hands on treatment that includes 25 mins back massage and 25 mins hydrating booster spa facial and an hour relaxation in the Rainforest. Today Only for only \$99

## TODAY'S SHOPPING SPECIAL - MICHAEL KORS

Accessories are the exclamation point of an outfit. They are what makes it complete. From dressed up with classic details to practical and glamorous, there is sure to be a timepiece in this collection to complete your look. Collection available in Treasure Ketch.



## TREASURE KETCH

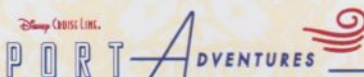
Deck 4, Forward



## GET THE PICTURE!

Ask a friendly photographer about Get the Picture! and the incredible value of an unlimited digital photo package, which includes all of your stateroom's photos. Visit Shutters today, as supplies are limited.

*\*Offer valid per stateroom only. Terms and conditions apply. Photos captured on your vacation are only available for purchase during this cruise.*



Welcome to the Southernmost point of the United States! It's not too late to plan your adventure for today. Why not explore "President Truman's Key West" or tour the old town via trolley or conch train. Before heading home, explore Miami with one of our debarkation port adventures.

Our team at the Port Adventures Desk, Deck 3, Midship, is on standby to help you plan your day.

## SHOPPING

### OFFICER PIN TRADING

Come and trade pins with the Officers of the Disney Wonder. Lobby Atrium, Deck 3, Midship, between 7:15 p.m. and 8:00 p.m.

### HAVE YOU GOT YOUR DUTY FREE?

Visit Radar Trap to an extensive collection of premium Spirits including Remy Louis VIII, Courvoisier, Richard Hennessy, Kelt Petra and more. All at Duty Free pricing! Deck 3, Forward.

### H2O BATH COLLECTION

Treat yourself to the ultimate indulgence with H2O products. H2O offers shampoo, conditioner, lip balm, hydrating body lotion and after sun care. Available in Treasure Ketch.

### 'TIL WE MEET AGAIN!

Although our time together is coming to a close, your memories will always live on! Visit Mickey's Mates for all your last minute Disney Cruise Line items.

### BEAUTIFULLY DISNEY!

Captivate your mind with the Beautifully Disney, a new collection of cosmetics and beauty products. The first of many collections from Beautifully Disney, Wickedly Beautiful arrives onboard. This collection takes you into a world of good vs evil, where soft and deep lacquer crèmes shimmer with glitter, richly unite to create modern interpretations from Snow White to Maleficent.

Due to port regulations, when the ship is docked, the stores will remain closed.

## IMPORTANT INFORMATION

### Security Notice

All Guests (including Children) who wish to disembark or embark the ship are required to present their Key to the World card at the gangway. A photo ID is also required for those Guests who are 18 years of age or older. Guests under the age of 18 are required to have a parent, guardian or other responsible adult sign an authorization form at the Guest Service Desk if they wish to go ashore unaccompanied or with any adult from another stateroom.

**Sunscreen/Insect Repellent Advisory**  
Please remember to use plenty of sunscreen and mosquito repellent when venturing ashore.

### Cold and Flu Reminder

Please wash hands frequently and thoroughly, particularly before meals. Contact the Health Center by dialing 7-1923, should anyone in your party become ill.

### Inclement Weather

For the safety of all Guests, outdoor events may be changed due to unforeseen weather conditions.

### Corridor Quiet Hours

As a courtesy to all our Guests, please recognize quiet hallway hours from 10:00 p.m. till 8:00 a.m.

### Environmental Message

With Disney's commitment to the Environment please refrain from throwing anything over the Ship's side. Thank you.

### No Reserved Seats Policy

As a courtesy to all Guests we kindly advise that the saving of seats is not permitted in the Walt Disney Theatre, and the saving of the sun loungers is not permitted on Deck 9 and 10. Items left unattended will be returned to lost and found at Guest Services, Deck 3, Midship.

### Smoking

For the comfort of our guests, the following areas are designated as smoking areas:

- Deck 10, forward, Starboard side
  - Deck 9, forward, Starboard side at Quiet Cove
  - Deck 4, aft, port side from 6:00 p.m. to 6:00 a.m. only (all of Deck 4 is non-smoking from 6:00 a.m. to 6:00 p.m.)
- Smoking is prohibited inside all guest staterooms and on stateroom verandahs. Guest found smoking in their staterooms or on their verandahs will be charged a \$250 stateroom recovery fee. Electronic cigarettes may only be used in designated smoking areas.

### Walt Disney Theatre

Theatrical performances may use artificial fog, strobe lights, pyrotechnics and other special effects. For the safety of our performers and the comfort of those around you, the use of any photography or video recording device or any electronic equipment is prohibited.

### Verandah Safety

Please do not leave any combustible materials on your balcony when not present in your stateroom for safety reasons.



Morning	8:30	8:45	9:00	9:15	9:30	9:45	10:00	10:15	10:30	10:45	11:00	11:15	11:30	11:45	12:00	12:15	12:30	12:45	1:00	1:15	1:30					
FUNNEL VISION	Bambi (G) Funnel Vision																									
BUENA VISTA THEATRE																			Monsters University (G) Duration: 1 Hour 43 Minutes							
CHARACTER			Princess Gathering Lobby Atrium (P)	Mickey Preludes			Minnie Preludes			Mickey Preludes			Goofy Lobby Atrium (P)			Sofia Lobby Atrium (P)										
			Jake Dk 4, Mid			Sofia Dk 4, Mid			Donald Dk 4, Mid			Pluto Lobby Atrium (S)			Jake Lobby Atrium (S)											
FUN FOR ALL AGES			Toddler Time Promenade Lounge		Disney Junior Promenade Lounge		Cruisin' for Trivia Promenade Lounge				U.S. Immigration Please see your Immigration Letter for Location															
	Saving Mr. Banks (PG-13)					Game Show: The Wheel Diversions																				
ADULTS	Friends of Bill W. Outlook Cafe		Wii Challenge Diversions		Board Games Available in Diversions & Promenade Lounge														Giant Jenga Diversions							
	Boot Camp Vista Spa Fitness Center		Tour De Cycle Vista Spa Fitness Center		Chinese Herbs Outlook Cafe						Posture Analysis Vista Spa Fitness Center															
VIBE 14-17 YEARS OLD															Chillin' in Vibe		Video Game Challenge									
EDGE 11-14 YEARS OLD						Youth Activities Open House										Chillin' in Edge		Ship Factor								
OCEANEER LAB 3-12 YEARS OLD			Game Challenge				Stitch's Great Adventure						Lava Flow				Lunch		GAGA Ball							
OCEANEER CLUB 3-12 YEARS OLD			Youth Activities Open House									Aloha Luau				Lunch		Heffalump Hunting								
"Hats Off to Peter Pan" 9:15 a.m. - 10:00 a.m.																										
Afternoon	1:45	2:00	2:15	2:30	2:45	3:00	3:15	3:30	3:45	4:00	4:15	4:30	4:45	5:00	5:15	5:30	5:45	6:00	6:15	6:30	6:45					
FUNNEL VISION																			Disney Nature: Oceans (G) Funnel Vision							
BUENA VISTA THEATRE	Frozen (PG) <b>DOLBY 3D</b> Duration: 1 Hour 48 Minutes										Thor: The Dark World (PG-13) Duration: 1 Hour 51 Minutes															
CHARACTER						Daisy Dk 9, Gazebo				Donald Dk 9, Gazebo		Chip & Dale Dk 9, Gazebo				Goofy Lobby Atrium (P)				Minnie Lobby Atrium (P)						
FUN FOR ALL AGES			Family Crafts Promenade Lounge				Disney Trivia Promenade Lounge				Chip It Golf Lobby Atrium (12+)				Live Music with Midtown Promenade Lounge				DREAMS AN ENCHANTED CLASSIC Walt Disney Theatre							
											Disney Vacation Club Group Preview Studio Sea															
ADULTS			Martini Tasting (21+) Cadillac Lounge							Live Guitar with Mike Archer Quiet Cove Pool										Starlight Duo LIVE Cadillac Lounge						
	Secrets To A Flatter Stomach Outlook Cafe					Acupuncture Demo Outlook Cafe				Footprint Analysis Vista Spa Fitness Center																
VIBE 14-17 YEARS OLD				Ship Factor						Picture This		Chillin' in Vibe			Youth Activities Open House											
EDGE 11-14 YEARS OLD	Ship Factor	Dodgeball			Brains and Brawns					Picture This		Animation Cells						Youth Activities Open House								
OCEANEER LAB 3-12 YEARS OLD			Goofy Files				Craft Corner				Friendship Rocks Prep		Friendship Rocks				Dinner									
OCEANEER CLUB 3-12 YEARS OLD	Toy Story Boot Camp						Chip and Dale's Rescue Rangers				Friendship Rocks Prep		Friendship Rocks				Dinner									
Evening	7:00	7:15	7:30	7:45	8:00	8:15	8:30	8:45	9:00	9:15	9:30	9:45	10:00	10:15	10:30	10:45	11:00	11:15	11:30	11:45	12:00					
FUNNEL VISION	Disney Nature: Earth (G) Funnel Vision										WALL-E (G) Funnel Vision															
BUENA VISTA THEATRE	Thor: The Dark World (PG-13) Duration: 1 Hour 51 Minutes										Frozen (PG) Duration: 1 Hour 48 Minutes															
CHARACTER	Pluto Lobby Atrium (P)		Mickey Lobby Atrium (P)												TIL WE MEET AGAIN Lobby Atrium											
FUN FOR ALL AGES	Bingo Pre Sales Wavebands		\$10,000 Final Mega Jackpot Bingo Wavebands				DREAMS AN ENCHANTED CLASSIC Walt Disney Theatre						Live Piano with Makeena Brick Lobby Atrium		Farewell Karaoke Studio Sea											
	Captain's Signing Treasure Ketch				Who Wants to be a Mouseketeer? Studio Sea						Live Music with Starlight Duo Promenade Lounge		Live Music with Midtown Promenade Lounge													
ADULTS			Jimmy Buffet Tribute Quiet Cove Pool				Live Music with Starlight Duo Cadillac Lounge				Club DJ Premonition Wavebands				Wonder Quest Wavebands		80's Flashback Wavebands		Club DJ Premonition Wavebands		Late Night Piano Cadillac Lounge					
			Tribute to the Rat Pack with Tim Moss Cadillac Lounge								Piano Requests Cadillac Lounge		Club 18*21 - Farewell Diversions													
VIBE 14-17 YEARS OLD	Teen Choice										Pump It Up								Final Farewell Slideshow				Homecoming			
EDGE 11-14 YEARS OLD	Youth Activities Open House										Animation Antics				Game Challenge				How Well Do You Know Your Counselor?		Final Farewell Slideshow		Final Farewell			
OCEANEER LAB 3-12 YEARS OLD			Piston Cup Challenge						Disney Cruise Line Trivia				Flubber		Chillin' in the Lab											
OCEANEER CLUB 3-12 YEARS OLD	Where's Tink?						Game Challenge		Final Farewell				Glow Jam													

Symbol for activities that will be repeated during the cruise



FOLD

Fold along the dotted lines and take me with you so you don't miss any of the fun!

FOLD

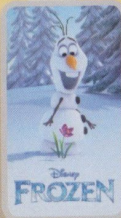
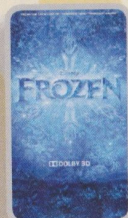
IN THE SPOTLIGHT SERIES  
SQUEE IT! SERIES  
JUMP UP! SERIES / CREATE & INVENT SERIES  
CLUBHOUSE SERIES  
STORYBOOK SERIES  
OPEN HOUSE



SATURDAY, JANUARY 18, 2014 - KEY WEST

# BUENA VISTA THEATRE

DOLBY 3D



1:00 p.m.  
Duration:  
1 hr 43 mins  
Rating: G

3:15 p.m.  
Duration:  
1 hr 48 mins  
Rating: PG

5:30 & 8:00 p.m.  
Duration:  
1 hr 51 mins  
Rating: PG-13

10:30 p.m.  
Duration:  
1 hr 48 mins  
Rating: PG

## Character Appearances

**PRINCESS GATHERING**  
Lobby Atrium - 9:00 a.m.

**JAKE - THE NEVERLAND PIRATE**  
Deck 4, Midship - 9:15 a.m.  
Lobby Atrium (S) - 11:45 a.m.

**MICKEY MOUSE**  
Preludes  
9:15 a.m. & 10:15 a.m.  
Lobby Atrium (P) - 7:45 p.m.

**PRINCESS SOFIA**  
Deck 4, Midship - 9:45 a.m.  
Lobby Atrium (P) - 11:45 a.m.

**MINNIE MOUSE**  
Preludes - 9:45 a.m.  
Lobby Atrium (P) - 5:45 p.m.

**DONALD DUCK**  
Deck 4, Midship - 10:15 a.m.  
Deck 9, Gazebo - 3:30 p.m.

**PLUTO**  
Lobby Atrium (S) - 11:15 a.m.  
Lobby Atrium (P) - 7:15 p.m.

**GOOFY**  
Lobby Atrium (P)  
11:15 a.m. & 5:15 p.m.

**DAISY DUCK**  
Deck 9, Gazebo - 3:00 p.m.

**CHIP & DALE**  
Deck 9, Gazebo - 4:00 p.m.

**DISNEY DREAMS**  
Walt Disney Theatre  
6:15 p.m. & 8:30 p.m.

**TIL WE MEET AGAIN**  
Lobby Atrium - 10:00 p.m.

(P) - Port Side (S) - Starboard Side

Don't forget your Camera to capture those Magical Moments!

Check here each day for Character appearances.

For detailed Character appearance information, please dial 7-PALS or see the Character Information Board in the Lobby Atrium.

Meet-and-Greets will be advertised for the length of time the line will be open. To avoid disappointment, please meet at start time of appearances.

## YOUTH ACTIVITIES THEMED EXPERIENCES

**CLUBHOUSE SERIES**  
focuses on movement and features content which appeals to younger children.

**JUMP UP! SERIES**  
includes large group games & movement-oriented activities.

**STORYBOOK SERIES**  
is designed with a strong connection to the Disney classic stories.

**CREATE & INVENT SERIES**  
will have a tactile focus allowing children to create and admire their work.

**IN THE SPOTLIGHT SERIES**  
focuses on children's stage presence with lots of activities and enthusiasm.

**SOLVE IT! SERIES**  
are less active, but will challenge children with problem/solutions-based activities.

### YOUTH ACTIVITIES OPEN HOUSE

Activities for families, adults and children of all ages to enjoy together.

## SHIP DIRECTORY

### YOUTH ACTIVITIES

DISNEY'S OCEANEER CLUB	DECK 5, MID	9:00 AM - 12:00 MID
DISNEY'S OCEANEER LAB	DECK 5, MID	9:00 AM - 12:00 MID
EDGE	DECK 2, MID	10:00 AM - 12:00 MID
VIBE	DECK 11, MID	12:00 PM - 1:00 AM
FLOUNDER'S REEF NURSERY	DECK 5, AFT	9:00 AM - 11:00 PM

### POOLS

Children under 12 years of age must have adult supervision in all pools.

GOOFY'S POOL	DECK 9, MID	9:00 AM - 6:00 PM
		8:00 PM - 10:00 PM
MICKEY'S POOL	DECK 9, AFT	8:00 AM - 10:00 PM
MICKEY'S SLIDE	DECK 9, AFT	9:00 AM - 5:00 PM
MICKEY'S SPLASH ZONE	DECK 9, AFT	8:00 AM - 8:00 PM
QUIET COVE POOL	DECK 9, FWD	6:00 AM - 12:00 MID

### RECREATION

PORT ADVENTURES DESK	DECK 3, MID	9:00 AM - 12:30 PM
VISTA FITNESS CENTER	DECK 9, FWD	6:00 AM - 10:00 PM
WIDE WORLD OF SPORTS DECK	DECK 10, FWD	24 HOURS

### GENERAL INFORMATION

BUENA VISTA THEATRE	DECK 5, AFT	SHOWTIMES
DISNEY VACATION CLUB DESK	DECK 4, MID	5:00 PM - 10:00 PM
FUNNEL VISION	DECK 9, MID	SHOWTIMES
FUTURE CRUISE SALES DESK	DECK 4, MID	3:00 PM - 6:00 PM
		7:30 PM - 10:00 PM
GUEST SERVICES	DECK 3, MID	24 HOURS
HAIR BRAIDING	DECK 9, MID	2:00 PM - 7:00 PM
MEDICAL HEALTH CENTER	DECK 1, FWD	9:30 AM - 11:00 AM
		4:30 PM - 7:00 PM
PORT & SHOPPING DESK	DECK 3, MID	9:15 AM - 10:15 AM
PRELUDES	DECK 4, FWD	5:45 PM - 6:15 PM
		8:00 PM - 8:30 PM
QUARTER MASTERS (ARCADE)	DECK 9, MID	24 HOURS
SHUTTERS PHOTO GALLERY	DECK 4, AFT	10:00 AM - 11:00 PM
VISTA SPA AND SALON	DECK 9, FWD	8:00 AM - 10:00 PM
WALT DISNEY THEATRE	DECK 4, FWD	SHOWTIMES

### SHOPPING

ART GALLERY	DECK 4, MID	7:30 PM - 9:00 PM
MICKEY'S MATES	DECK 4, FWD	7:30 PM - 11:00 PM
RADAR TRAP (DUTY FREE)	DECK 3, FWD	7:30 PM - 11:00 PM
TREASURE KETCH	DECK 4, FWD	7:30 PM - 11:00 PM

## IMPORTANT NUMBERS

Fire/Security: 7-3001  
Medical EMERGENCY: 7-3000  
Health Center: 7-1923

### DINNER MENU

Animator's Palate: Show Dinner  
Parrot Cay: Island Dinner  
Triton's: French Dinner  
Dining Times: 5:45pm & 8:15pm

### DRINK OF THE DAY

Key Lime Margarita (Alcoholic)  
Mint Tea Fruit Punch (Non - Alcoholic)

### WEATHER FORECAST

Saturday:  
Sunny  
High:  
68°F/20°C

Evening Attire: Cruise Casual

## DINING & LOUNGES

### BREAKFAST

BEACH BLANKET BUFFET	DECK 9, AFT	7:30 AM - 11:00 AM
GOOFY'S GALLEY	DECK 9, AFT	6:30 AM - 8:30 AM
PARROT CAY	DECK 3, AFT	8:30 AM - 11:30 AM
TRITON'S (A-LA CARTE)	DECK 3, MID	8:00 AM - 9:30 AM

### LUNCH

BEACH BLANKET BUFFET	DECK 9, AFT	11:30 PM - 2:00 PM
GOOFY'S GALLEY	DECK 9, AFT	10:30 AM - 7:00 PM
PINOCCHIO'S PIZZERIA	DECK 9, MID	10:30 AM - 6:00 PM
PLUTO'S DOG HOUSE	DECK 9, AFT	10:30 AM - 6:00 PM
TRITON'S	DECK 3, MID	11:30 AM - 1:30 PM

### DINNER

ANIMATOR'S PALATE	DECK 4, AFT	5:45 PM & 8:15 PM
PARROT CAY	DECK 3, AFT	5:45 PM & 8:15 PM
TRITON'S	DECK 3, MID	5:45 PM & 8:15 PM
PLATO (18+)	DECK 10, AFT	6:00 PM - 9:00 PM
PLUTO'S DOG HOUSE	DECK 9, AFT	6:00 PM - 9:30 PM

### LATE NIGHT SNACKS

DIVERSIONS	DECK 3, FWD	11:00 PM - 12:00 MID
ICE CREAM AT GOOFY'S GALLEY	DECK 9, AFT	7:00 PM - 11:00 PM
PINOCCHIO'S PIZZERIA	DECK 9, MID	9:30 PM - 12:00 MID
PROMENADE LOUNGE	DECK 3, AFT	11:00 PM - 12:00 MID

### ADDED FEATURES

BEVERAGE STATION	DECK 9, AFT, PORT SIDE	24 HOURS
ROOM SERVICE	DIAL 6801 OR 6802	CLOSES AT 1:00 AM

### ENTERTAINMENT - LOUNGES - BARS

Adults must be 21 and older to consume alcoholic beverages.

CADILLAC LOUNGE (18+)	DECK 3, FWD	5:30 PM - 12:00 MID
COVE CAFE (18+)	DECK 9, MID	6:30 AM - 12:00 MID
DIVERSIONS (18+ AFTER 9:00 PM)	DECK 3, FWD	4:30 PM - 12:00 MID
INTERNET CAFE	DECK 3, AFT	24 HOURS
OUTLOOK CAFE (18+)	DECK 10, MID	10:00 AM - 12:00 MID
PINOCCHIO'S PIZZERIA	DECK 9, MID	9:30 AM - 12:00 MID
PLUTO'S DOG HOUSE	DECK 9, AFT	10:30 AM - 6:00 PM
PRELUDES	DECK 4, FWD	5:45 PM - 6:15 PM
		8:00 PM - 8:30 PM
PROMENADE LOUNGE (FAMILY)	DECK 3, AFT	8:00 AM - 12:00 MID
SIGNALS (18+)	DECK 9, FWD	9:30 AM - 10:30 PM
STUDIO SEA	DECK 4, MID	SHOWTIMES
WAVEBANDS (18+)	DECK 3, FWD	9:45 PM - 2:00 AM

Consumers who order raw or partially cooked, ready-to-eat food of animal origin, are hereby informed that the food is not sufficiently cooked to ensure its safety.

All Ashore: Approx: 11:00 a.m.  
All Aboard: 6:00 p.m.

Ship's Agent In Key West

Caribe Nautical Services, Inc. P.O. Box 285, Key West, FL 33041,  
Tel: 305-294-3288 or 305-797-0850