

PERSONAL NAVIGATOR

Disney WONDER

FRIDAY, JANUARY 17, 2014

Sunrise: 6:56 a.m. Sunset: 5:43 p.m.
Evening Attire: Pirate or Cruise Casual
All Aboard: 3:45 p.m.

Friday: Sunny High: 69°F/21°C

NASSAU

SHOWTIME TONIGHT

featuring the comedy & juggling of

Pete Matthews

WALT DISNEY THEATRE

Deck 4, Forward

6:15 p.m. & 8:30 p.m.



As a courtesy to all Guests, we kindly advise that the saving of seats is not permitted in the Walt Disney Theatre.



Assistance available at the entrance to the Walt Disney Theatre 30 minutes prior to show time.



Nassau Port Information

While you will find many great experiences in Nassau, there have been reports of increased crime, including assaults and robberies involving tourists in the area. As in any large city, you'll want to take some basic precautions to make the most of your time ashore.

- Be aware of your surroundings at all times, just as you would in your normal daily activities.
- Avoid shortcuts, narrow alleys or poorly lit streets. We recommend that Guests only visit the downtown shopping areas and other tourist locations.
- Leave valuables in your room safe and avoid carrying large amounts of cash. Exercise caution when using ATMs. Cameras and handbags should be carried out of sight and secured to you with a strap.
- Leave passports, air transportation tickets and other travel documents in your room safe. When going ashore, each adult is required to carry a Driver's license, copy of passport or other government-issued photo ID.
- If travelling by taxi, use only licensed taxi operators.
- In general, use the same level of precaution you would use in any tourist destination.
- Most crimes are easier to commit in dark, unlit areas. You should stay out of these types of areas and consider returning to the ship before nightfall. If you stay out at night, please be extra vigilant about your personal safety.

PIRATES OF THE CARIBBEAN

All you Buccaneers! Join Goofy and his Pirate friends as you shake your bones all night long! There be surprises, just don't invite Captain Hook!

9:45 p.m.

Goofy's Pool Stage
Deck 9, Midship
(Weather Permitting)

Don't Miss:

Disney Channel on Deck

Goofy's Pool Stage, Deck 9, Midship - 2:00 p.m.

Don't change that channel! It's time for a Disney Channel afternoon poolside! Your cruise staff will host an exciting day of games and contests in between your favorite Disney Channel shows! So sit back, relax, and enjoy the sun!

A Pirate's Life For Me

Studio Sea, Deck 4, Midship - 7:30 p.m.

Calling all Pirates, we be! If ye have an adventurous spirit or pirate savvy, come spin the "Wheel of Destiny" for a treasure trove of fun be ripe for the takin' in this action packed pirate game show.

Pirates of the Caribbean: The Challenge of Davy Jones

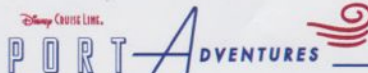
Goofy's Pool Stage, Deck 9, Midship - 9:20 p.m.

Join us on deck for an interactive video game experience. You'll be the crew as we find out who is the better Captain, Captain Jack or Captain Barbossa?

Krazy Karaoke followed by Club DJ Premonition

Wavebands, Deck 3, Forward - 11:00 p.m.

Take to the stage, grab a microphone and sing your favorite tunes with your Club Host, JD, and Cruise Staff DJ. After join Club DJ Premonition as he rocks the night away.



Please check your tour tickets for meeting times and locations.
Visit the Port Adventures Desk, Deck 3, Midship for any questions.

DINNER MENU

Animator's Palate: Pirate Menu
Parrot Cay: Pirate Menu
Triton's: Pirate Menu

DRINK OF THE DAY

Sunken Treasure (Alcoholic)
Pirate Surprise (Non Alcoholic)

IMPORTANT NUMBERS

Fire/Security: 7-3001
Medical Emergency: 7-3000
Health Center: 7-1923

FUN FOR ALL AGES HIGHLIGHTS

FAMILY CRAFTS: TILE COASTERS

Promenade Lounge, Deck 3, Aft - 1:00 p.m.

Join your Cruise Staff and create a fun souvenir for you to keep.

FAMILY CRAFTS: PAPER PLANE MAKING

Promenade Lounge, Deck 3, Aft - 2:00 p.m.

Join your Cruise Staff to learn how to make some aerodynamic Paper Planes

CRUISIN' FOR TRIVIA

Promenade Lounge, Deck 3, Aft - 3:00 p.m.

Navigate your way through a round of questions testing your general knowledge.

FAMILY CRAFTS: DOOR HANGERS

Promenade Lounge, Deck 3, Aft - 4:00 p.m.

Make some decorative door hangers with your Cruise Staff



A PIRATE'S LIFE FOR ME

Studio Sea, Deck 4, Midship - 7:30 p.m.

Calling all Pirates, we be! If ye have an adventurous spirit or pirate savvy, come spin the "Wheel of Destiny" for a treasure trove of fun be ripe for the takin' in this action packed pirate game show.



PIRATES IN THE CARIBBEAN DECK PARTY

Goofy's Pool Stage, Deck 9, Midship - 9:45 p.m.

Yer Disney Friends are all set for a swashbucklin' good time! That's a Pirate's Dinner all mapped out for yer feastin' before 'ya hoist yourself to Deck 9 to enjoy a rowdy buccaneer bash we call Pirates IN the Caribbean Deck Party. Swing & sway with lots of surprises and seafaring fun that all ends with a BLAST!



ADULT ACTIVITY HIGHLIGHTS

VISTA SPA FITNESS CLASSES & SEMINARS

Sunrise Stretch - Vista Spa Fitness Center - 7:00 a.m.

Body Sculpt Boot Camp (Nominal fee) - Vista Spa Fitness Center - 8:30 a.m.

Tour De Cycle - Vista Spa Fitness Center - 9:00 a.m.

Introduction to Acupuncture - Outlook Cafe - 10:15 a.m.

Detox for Health & Weight Loss - Outlook Cafe - 11:00 a.m.

Inch Loss Made Easy With Ionithermi - Outlook Cafe - 12:00 p.m.

How to Increase Your Metabolism - Vista Spa Fitness Center - 2:00 p.m.

Arthritis and Back Pain Solutions - Vista Spa Fitness Center - 3:15 p.m.

TASTING CLASSES

Champagne Tasting (21+) - Outlook Cafe - 10:30 p.m.

Cognac Tasting (21+) - Cove Cafe - 10:30 p.m.

Please make reservations for tastings at Guest Services for a nominal fee.

Tasting Seminars are only for Guests 21 and Older.

WII CHALLENGE

Divisions, Deck 3, Forward - 5:00 p.m.

Come to challenge your new friends playing this fun video game

MIXER

Outlook Cafe, Deck 10, Midship - 9:15 p.m.

Come to join fellow cruisers your own age at our exclusive Club 18*21 event.

LIVE PIANO WITH TIM MOSS

Cadillac Lounge, Deck 3, Forward - 7:30, 9:30, 10:30 & 11:30 p.m.

Join Tim Moss as he plays live piano for your listening pleasure, including a featured set "Tribute to Nat King Cole" at 7:30 p.m..

KRAZY KARAOKE FOLLOWED BY CLUB DJ PREMONITION

Wavebands, Deck 3, Forward - 11:00 p.m.

Take to the stage, grab a microphone and sing your favorite tunes with your Club Host, JD, and Cruise Staff DJ. After join Club DJ Premonition as he rocks the night away.

\$5,000 MEGA JACKPOT BINGO

Wavebands, Deck 3, Forward

Card Sales - 4:15 p.m.

Game Starts - 4:30 p.m.

Don't miss your chance to take home big money! 4 CASH prize games and great raffle prizes to be won! Complete the fourth game in 46 numbers or less and win the \$5,000 Mega Jackpot!

PIRATE JACKPOT BINGO

Wavebands, Deck 3, Forward

Card Sales - 7:15 p.m.

Game Starts - 7:30 p.m.

Arrrrgh! Don't miss our 4 cash prize games and your chance to win some Pirate treasure! Great Disney Cruise Line raffle prizes for all ye mateys! Plus your chance to win the Jackpot money early! Arrive dressed as a pirate and receive three free chances for the jackpot game.

YOUTH ACTIVITIES HIGHLIGHTS

DINE & PLAY

A convenience for families dining at 8:15 p.m., our Youth Activities Counselors will be available at 9:15 p.m. at the entrance of Triton's, Parrot Cay and Animator's Palate dining rooms to bring registered children to join the fun in the Oceaneer Club and Oceaneer Lab.



Deck 5, Aft (7-18500) 7:00 a.m. - 11:00 p.m.

Infants and Toddlers can enjoy toys and activities at Flounder's Reef Nursery. Reservations are first come, first served so please stop by!



Deck 5, Midship (7-1440) 9:00 a.m. - 12:00 mid
(3 - 12 years old)

SEBASTIAN'S JUNKANOO JAM

3:00 p.m.

The dance floor awaits you for singing, dancing, and a good time.

SO YOU WANT TO BE A PIRATE?

7:30 p.m.

Have you learned about life on the high seas? Do you have what it takes to be a pirate? Join Captain Hook and friends to find out!



Deck 5, Midship (7-1445) 7:00 a.m. - 12:00 mid
(3 - 12 years old)

4TH PIGS PASTA PALACE

10:00 a.m.

Build your very own house made out of pasta and play-doh for Franco, the Fourth Little Pig, to see if it will withstand nature's forces.

A PIRATE'S LIFE FOR ME

8:30 p.m.

Yo ho, yo ho, a Pirate's Life for Me! Aarrgh me mateys! Put your knowledge to the test!



Deck 2, Midship (7-5810) 10:00 a.m. - 1:00 a.m.
(11 - 14 years old)

VILLAINOUS VENTURES

1:45 p.m.

The Disney villains have cast a spell on the ship and only you can break it. Teams must work together as they hunt for clues around the ship.



Deck 11, Midship (7-1456) 12:00 p.m. - 2:00 a.m.
(14 - 17 years old)

BRING IT!

10:45 p.m.

How much do you think you know? Test your knowledge in our game show where you will be pitted head to head.

YOUTH ACTIVITIES OPEN HOUSE

Open House is an opportunity for all to come and participate in a variety of exciting activities and free time in the Oceaneer Club, Oceaneer Lab, Flounder's Reef Nursery, Vibe and Edge throughout the cruise. During these times secured programming will still be offered in the other venue for those looking to check their children into care.

Disney's Oceaneer Club: 9:00 a.m. - 12:00 p.m. **Edge:** 10:00 a.m. - 12:00 p.m.
Disney's Oceaneer Lab: 3:30 p.m. - 5:00 p.m. **Vibe:** 12:00 p.m. - 2:00 p.m.



BUENA VISTA THEATRE

Today's Movies

OC - Open Captioning



8:30 a.m.
Duration:
1 hr 32 mins
Rating: PG



11:00 a.m., 5:15 p.m. & 8:00 p.m.
Duration:
2 hrs 5 mins
Rating: PG-13

DOLBY 3D



2:30 p.m.
Duration:
1 hr 48 mins
Rating: PG

DOLBY 3D



10:45 p.m.
Duration:
1 hr 51 mins
Rating: PG-13

MORE TO ENJOY WHILE ONBOARD



DISNEY VACATION CLUB® GROUP PREVIEW

Want to learn more about taking magical vacations year after year? Please see a Disney Vacation Club representative on Deck 4, Midship, or call 7-2805 from your stateroom phone for more information about our interactive group presentation.



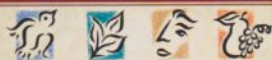
VISIT THE FUTURE CRUISE SALES DESK EARLY TODAY

Avoid the evening rush and visit the Future Cruise Sales Desk early for your last chance to save 10% on your next cruise, receive up to a \$200 onboard credit, and pay a reduced deposit. Future Cruise Sales Desk, Deck 4, Midship.



PORT & SHOPPING INFORMATION

Nassau is the most famous shopping port in the Bahamas. Take advantage of the tax & duty free savings and meet your Port & Shopping Guide Maureen in Diamonds International (Stpre 1a) downtown between 9:00 a.m. - 11:00 a.m. Make sure you pick up your shopping coupons on the gangway!



VISTA SPA

Deck 9, Forward - Phone: 7-1465

SALON TREATS

Choose from: neck shoulder massage, booster facial, eye collagen treatment, scalp massage, hands and forearm massage, conditioning hair treatment, foot and ankle massage, sunlowl makeover.

Today Only: Pick 5 for only \$99

2014 DISNEY CRUISE LINE MERCHANDISE

Step into Mickey's Mates today and commemorate your Disney cruise with a wide selection of 2014 Disney Cruise Line Merchandise. Mickey's Mates, Deck 4, Forward.



SMILE

Tonight is your last chance for professional portraits! Capture the magic of your vacation at one of our portrait studios and let the memories live on. Portraits will be available in the Lobby Atrium, Deck 3, Midship, from 5:15 p.m. - 6:00 p.m. and 7:15 p.m. - 8:30 p.m.

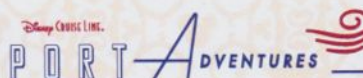
QUARTER MASTERS ARCADE

Can you unlock the Grand MASTER KEY? Challenge yourself and discover the rewards that await you including cool Headphones, Underwater Cameras and Disney Princesses Prize Pack, come over to Deck 9, Midship, Quarter Masters Arcade and you could win a treasure.

WIRELESS INTERNET: KEEPING YOU CONNECTED AT SEA

\$0.75 per minute or save money by buying blocks of time. \$27.50 for 50 minutes, \$40 for 100 minutes and \$75 for 250 minutes. Wireless information sheets are available at Guest Services, Deck 3, Midship, Internet Cafe, Deck 3, Aft, Cove Cafe, Deck 9, Midship and Outlook Cafe, Deck 10, Midship.

Due to the technology involved and satellite connectivity, the onboard internet service will be noticeably slower than you may be accustomed to and might at times be interrupted or unavailable.



Welcome to Nassau, Capital of the Bahamas. If you are looking to enjoy some beach time, we have last minute availability on the Blue Lagoon Beach Day, where you can enjoy a lazy afternoon in paradise on a secluded picture-perfect island just off the coast of Nassau. Stop by the Port Adventures Desk to learn more about this and many other Port Adventures for today and tomorrow.

SHOPPING

GUESS BAGS IN STYLE

Treasure Ketch is your fashion destination. See the latest collections of "it" bags from this iconic fashion house. Tuck away your daily essentials in your new signature bag made just right for everyday wear.

ART GALLERY - MORE TO ENJOY WHILE ONBOARD

Welcome onboard, take a minute to stroll through the Art Gallery on Deck 4, Midship and discover special themed Disney artwork. Find a selection of fine art, giclees, lithographs, and original Disney art. Visit our Gallery Host between 7:00 p.m. - 9:00 p.m. for more information.

TIME TO GO WITH MICHAEL KORS WATCHES

Accessories are the exclamation point of an outfit. They are what makes it complete. From Dressed up with classic details thru to Practical and Glamorous there is sure to be a timepiece in this collection to complete your look. Collection available in Treasure Ketch.

GUCCI WATCHES

Gucci Timepieces has been creating watches since the early Seventies, combining Swiss precision and Italian style. Recognized for their design, quality and craftsmanship, the many styles of the maison have become classics for men and women. Collection includes G-Frame and the Twirl, Marina Chain and the G-Gucci line and Gucci Coupé. All timepieces present Gucci icons, such as G-shaped bezels, red-green-red straps, or Horsebit clasps. View the collection in Treasure Ketch.

GREAT DEALS WHEN SHOPPING ONBOARD

Visit Treasure Ketch on Deck 4, Forward, for a wide variety of brand name timepieces and fine jewelry such as Ernst Benz and more! For a limited time, receive 25% off the ticketed price of Dinero Jewelry. Discount taken at register. Offer not valid on previous purchases. No other discounts apply. Offer valid while supplies last. Offer subject to change without notice.

Due to port regulations, when the ship is docked, the stores will remain closed.

IMPORTANT INFORMATION

Security Notice

All Guests (including Children) who wish to disembark or embark the ship are required to present their Key to the World card at the gangway. A photo ID is also required for those Guests who are 18 years of age or older. Guests under the age of 18 are required to have a parent, guardian or other responsible adult sign an authorization form at the Guest Service Desk if they wish to go ashore unaccompanied or with any adult from another stateroom.

Sunscreen/Insect Repellent Advisory
Please remember to use plenty of sunscreen and mosquito repellent when venturing ashore.

Cold and Flu Reminder

Please wash hands frequently and thoroughly, particularly before meals. Contact the Health Center by dialing 7-1923, should anyone in your party become ill.

Inclement Weather

For the safety of all Guests, outdoor events may be changed due to unforeseen weather conditions.

Corridor Quiet Hours

As a courtesy to all our Guests, please recognize quiet hallway hours from 10:00 p.m. til 8:00 a.m.

Environmental Message

With Disney's commitment to the Environment, please refrain from throwing anything over the Ship's side. Thank you.

No Reserved Seats Policy

As a courtesy to all Guests we kindly advise that the saving of seats is not permitted in the Walt Disney Theatre, and the saving of the sun loungers is not permitted on Deck 9 and 10. Items left unattended will be returned to lost and found at Guest Services, Deck 3, Midship.

Smoking

For the comfort of our guests, the following areas are designated as smoking areas:

- Deck 10, forward, Starboard side
- Deck 9, forward, Starboard side at Quiet Cove
- Deck 4, aft, port side from 6:00 p.m. to 6:00 a.m. only (all of Deck 4 is non-smoking from 6:00 a.m. to 6:00 p.m.)

Smoking is prohibited inside all guest staterooms and on stateroom verandahs. Guest found smoking in their staterooms or on their verandahs will be charged a \$250 stateroom recovery fee. Electronic cigarettes may only be used in designated smoking areas.

Walt Disney Theatre

Theatrical performances may use artificial fog, strobe lights, pyrotechnics and other special effects. For the safety of our performers and the comfort of those around you, the use of any photography or video recording device or any electronic equipment is prohibited.

Verandah Safety

Please do not leave any combustible materials on your balcony when not present in your stateroom for safety reasons.

| Morning | 8:30 | 8:45 | 9:00 | 9:15 | 9:30 | 9:45 | 10:00 | 10:15 | 10:30 | 10:45 | 11:00 | 11:15 | 11:30 | 11:45 | 12:00 | 12:15 | 12:30 | 12:45 | 1:00 | 1:15 | 1:30 | | | |
|---------------------------------|--------------------------------------------------------|--------------------|---------------------------------------------------------------|-----------------------------------|--------------------|-------------------------------------------------------------------------------------------------------|-----------------------------------------------|-------|-----------------------|-------|----------------------------------------------------------------------|-------|---------------------------------------------------------|------------------|-----------------------------|----------------------------------------------|-------|-------|-----------------------------------------------------|------|----------------|----------------|--|--|
| FUNNEL VISION | | | | The Rescuers (G) Funnel Vision | | | | | | | Virtual Tours Funnel Vision | | | | | Honey I Shrunk The Kids (G) Funnel Vision | | | | | | | | |
| BUENA VISTA THEATRE | Planes (PG) | | | | | | | | | | | | Saving Mr. Banks (PG-13) Duration: 2 Hours 5 Minutes | | | | | | | | | | | |
| CHARACTER | Princess Gathering Lobby Atrium | Mickey Preludes | | | Minnie Preludes | For detailed character appearances, call 7-PALS or refer to the Character Screen in the Lobby Atrium. | | | | | | | | | | | | | | | | | | |
| | Jake Dk 4, Mid | | | Sofia Dk 4, Mid | | | | | | | | | | | | | | | | | | | | |
| FUN FOR ALL AGES | | | Open House: Mouseketeer Training Disney's Oceaneer Club | | | | | | | | Open House: Little Einstein's Adventure Disney's Oceaneer Club | | | | | | | | Family Crafts: Tile Coasters Promenade Lounge | | | | | |
| | Board Games Available in Diversions & Promenade Lounge | | | | | | | | | | | | | | | | | | | | | | | |
| ADULTS | Friends of Bill W. Outlook Cafe | | | | | | | | | | | | | | | | | | | | | | | |
| | Boot Camp Vista Spa Fitness Center | | Tour De Cycle Vista Spa Fitness Center | | | | Introduction to Acupuncture Outlook Cafe | | | | Detox for Health & Weight Loss Outlook Cafe | | | | | | | | Ionithermi Outlook Cafe | | | | | |
| VIBE 14-17 YEARS OLD | | | | | | | | | | | | | | | Youth Activities Open House | | | | | | | | | |
| EDGE 11-14 YEARS OLD | | | | | | | Youth Activities Open House | | | | | | | Chillin' in Edge | | | | | | | | | | |
| OCEANEER LAB 3-12 YEARS OLD | Craft Corner | | | | Scavenger Hunt | | | | 4th Pigs Pasta Palace | | | | | Go Fetch | | Animation Antics | | Lunch | | | | Game Challenge | | |
| OCEANEER CLUB 3-12 YEARS OLD | | | Youth Activities Open House | | | | | | | | | | | | | | | | Lunch | | Game Challenge | | | |
| | | | | | | | "Mouseketeer Training" 9:15 a.m. - 10:00 a.m. | | | | | | "Little Einstein's Adventure" 10:45 a.m. - 11:30 a.m. | | | | | | | | | | | |

| Afternoon | 1:45 | 2:00 | 2:15 | 2:30 | 2:45 | 3:00 | 3:15 | 3:30 | 3:45 | 4:00 | 4:15 | 4:30 | 4:45 | 5:00 | 5:15 | 5:30 | 5:45 | 6:00 | 6:15 | 6:30 | 6:45 | | | | | | | | |
|---------------------------------|---------------------|-------------------------------------------------------|------|-------------------------------|--------------------------------------------|-----------------------------------------|---------------------------------------------|---------------------------------------------------------------|-------------------------|--------------------------------------------------|--------------------|--------------------------------------------------|---------------------------------------------------------|----------------------------------------------------------------|---------------------------------------------|--------------------------------|----------------------------------|------|-----------------------------------------------------------------------------------|------|---------------------------|-------------|------------------|--|--|--|--------|--------|--|
| FUNNEL VISION | | Disney Channel on Deck Funnel Vision | | | | | Muppet Treasure Island (G) Funnel Vision | | | | | | | | | Peter Pan (G) Funnel Vision | | | | | | | | | | | | | |
| BUENA VISTA THEATRE | | | | | Frozen (PG) Duration: 1 Hour 48 Minutes | | | | | | | | Saving Mr. Banks (PG-13) Duration: 2 Hours 5 Minutes | | | | | | | | | | | | | | | | |
| CHARACTER | | | | | Chip & Dale Dk 9, Gazebos | | Pluto Dk 9, Gazebos | | Stitch Dk 9, Gazebos | | | | | | Hook & Smee Lobby Atrium (P) | | Jack Sparrow Lobby Atrium (P) | | Mickey Lobby Atrium (P) | | | | | | | | | | |
| | | | | | | | | | | | | | Jake Lobby Atrium (S) | | | | Peter Pan Lobby Atrium (S) | | | | | | | | | | | | |
| FUN FOR ALL AGES | | | | | Animation - Donald Animator's Palate | | | | | | Bingo Pre Sales | | \$5,000 Mega Jackpot Wavebands | | Live Music with Midtown Promenade Lounge | | | | Showtime: The Comedy & Juggling of Pete Matthews Walt Disney Theatre | | | | | | | | | | |
| | | Goofy's Pool Stage | | | | | | | | | | | | | | | | | | | | | | | | | | | |
| | | Family Crafts: Paper Plane Making Promenade Lounge | | | | Cruisin' for Trivia Promenade Lounge | | | | Crafts: Door Hangers Promenade Lounge | | 3 Point Contest Wide World Of Sports | | | | | | | | | | | | | | | | | |
| ADULTS | | Increase Your Metabolism Vista Spa Fitness Center | | Pool Games Quiet Cove Pool | | | | Animation - Mickey Animator's Palate | | | | Disney Vacation Club Group Preview Studio Sea | | | | | | | | | | | | | | | | | |
| | | | | | | | | Arthritis and Back Pain Solutions Vista Spa Fitness Center | | Live Music with Starlight Duo Quiet Cove Pool | | | | Club 18*21 - Wii Challenge Diversions | | | | | | | | | | | | | | | |
| VIBE 14-17 YEARS OLD | Open House | Chillin' in Vibe | | | | Smoothie Hour | | | | Dive into DJ'ing | | | | | | Chillin' in Vibe | | | | | | Teen Choice | | | | | | | |
| EDGE 11-14 YEARS OLD | Villainous Ventures | | | | Craft Corner | | | | | | | | Brains and Brawns | | | | Smoothie Hour | | | | | | Chillin' in Edge | | | | | | |
| OCEANEER LAB 3-12 YEARS OLD | | | | | | Pinata Party | | | | | | | | Youth Activities Open House "Flubber" 4:00 p.m. - 4:45 p.m. | | | | | | | | GAGA Ball | | | | | | Dinner | |
| OCEANEER CLUB 3-12 YEARS OLD | The Royal Ball | | | | | | Sebastian's Junkanoo Jam | | | | | | | | Dance Party | | | | | | King Triton's Royal Court | | | | | | Dinner | | |

| Evening | 7:00 | 7:15 | 7:30 | 7:45 | 8:00 | 8:15 | 8:30 | 8:45 | 9:00 | 9:15 | 9:30 | 9:45 | 10:00 | 10:15 | 10:30 | 10:45 | 11:00 | 11:15 | 11:30 | 11:45 | 12:00 | | |
|---------------------------------|--------------------------------------------------------------------------------------------------|----------------------------------------------------------------------------------------------------------------|-----------------------------------------------------------------------------------------------------------------|----------------------------|------------------------------------------------------------------------------------------------------------|------------------------------------------------------------------------------------------------------------|------|------|--------------------------------------------------|---------------------------------------------------------|-----------------------------------------------------------------------------------------------------------------------------|------------------------------------------------------|----------------|-------------------------------------------------------------------------------------------------|---------------------------------------------|---------------------------------------------------------------------------------------------------------------------------------------------------|--------------|-------|---------------------------------------------------|-------------------------------------------------------------------------------------------------------|-------|--|--|
| FUNNEL VISION | | | | | | | | | | Challenge of Davy Jones Funnel Vision | | Pirates IN The Caribbean Deck Party Funnel Vision | | | Club DJ Premonition Funnel Vision | | | | | | | | |
| BUENA VISTA THEATRE | | | | | | | | | | Saving Mr. Banks (PG-13) Duration: 2 Hours 5 Minutes | | | | | | Thor: The Dark World (PG-13)  Duration: 1 Hour 51 Minutes | | | | | | | |
| CHARACTER | | Hook & Smee Lobby Atrium (P) | Jack Sparrow Preludes | Mickey Lobby Atrium (P) | | | | | | | | | | | | | | | | | | | |
| | | Stitch Dk 4, Mid | | Minnie Dk 4, Mid | | | | | | | | | | | | | | | | | | | |
| FUN FOR ALL AGES | | Bingo Pre Sales | Pirate Jackpot Bingo Wavebands | |  Walt Disney Theatre | | | | Challenge of Davy Jones Goofy's Pool Stage | |  Goofy's Pool Stage, Deck 9, Midship | | | | Club DJ Premonition Goofy's Pool Stage | | | | | | | | |
| | | Pin Trading Preludes | A Pirate's Life For Me Studio Sea | | | | | | | | | | | | | | | | | | | | |
| | | | Latin Dance Party Promenade Lounge | | | | | | | | Live Music with Midtown Promenade Lounge | | | | Live Music with Midtown Promenade Lounge | | | | Live Music with Starlight Duo Promenade Lounge | | | | |
| ADULTS | | Live Guitar with Mike Archer Quiet Cove Pool | | | | | | | | Club 18*21 - Mixer Outlook Cafe | | Mike Archer LIVE Quiet Cove Pool | | Mike Archer LIVE Quiet Cove Pool | | Krazy Karaoke followed by Club DJ Premonition Wavebands | | | | | | | |
| | | Tribute to Nat King Cole with Tim Moss Cadillac Lounge | | | | Live Music with Starlight Duo Cadillac Lounge | | | | | | Piano Requests with Tim Moss Cadillac Lounge | | | | Tim Moss LIVE Cadillac Lounge | | | | | | | |
| VIBE 14-17 YEARS OLD | Teen Choice | Animation Cells | | | | | | | | Pump It Up | | | Deck Party | | | Bring It! | | | A Pirate's Life For Me | | | | |
| EDGE 11-14 YEARS OLD | Chillin' in Edge | | | | | | | | | | Crowning of the Couch Potato | | | Deck Party | | | Tween Choice | | | A Pirate's Life For Me | | | |
| OCEANEER LAB 3-12 YEARS OLD | |  Ratatouille Cooking School | | | |  A Pirate's Life For Me | | | | | | | |  Pathfinders | | | | | |  Animation Cells | | | |
| OCEANEER CLUB 3-12 YEARS OLD |  Craft Corner | |  So You Want to be a Pirate? | | | | | | | |  Pirate Prep | | Scavenger Hunt | | | | | | Chillin' in the Club | | | | |

Symbol for activities that will be repeated during the cruise



FOLD

Fold along the dotted lines and take me with you so you don't miss any of the fun!

FOLD

IN THE SPOTLIGHT SERIES

IN THE SPOTLIGHT SERIES

UP & UP SERIES

CREATE & INVENT SERIES

OPEN HOUSE

CLUBHOUSE SERIES

STORYBOOK SERIES

FRIDAY, JANUARY 17, 2014 - NASSAU

BUENA VISTA THEATRE

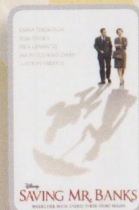
OC - Open Captioning

DOLBY 3D

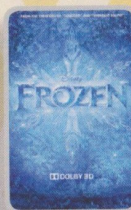
DOLBY 3D



8:30 a.m.
Duration:
1 hr 32 mins
Rating: PG



11:00 a.m., 5:15 p.m.
& 8:00 p.m.
Duration:
2 hrs 5 mins
Rating: PG-13



2:30 p.m.
Duration:
1 hr 48 mins
Rating: PG



10:45 p.m.
Duration:
1 hr 51 mins
Rating: PG-13

Character Appearances

PRINCESS GATHERING
Lobby Atrium - 8:30 a.m.

JAKE - THE NEVERLAND PIRATE
Deck 4, Midship - 8:45 a.m.
Lobby Atrium (S)
5:15 p.m. & 7:15 p.m.

MICKEY MOUSE
Preludes - 8:45 a.m.

PRINCESS SOFIA
Deck 4, Midship - 9:15 a.m.

MINNIE MOUSE
Preludes - 9:15 a.m.

CHIP & DALE
Deck 9, Gazebo - 2:30 p.m.

PLUTO
Deck 9, Gazebo - 3:00 p.m.

STITCH
Deck 9, Gazebo - 3:30 p.m.

CAPTAIN HOOK & MR SMEE
Lobby Atrium (P)
5:15 p.m. & 7:15 p.m.

PIRATE CHIP & DALE
Deck 4, Midship - 5:15 p.m.

CAPTAIN JACK SPARROW
Preludes
5:30 p.m. & 7:30 p.m.

PIRATE MICKEY MOUSE
Lobby Atrium (P)
5:45 p.m. & 7:45 p.m.

PIRATE MINNIE MOUSE
Deck 4, Midship
5:45 p.m. & 7:45 p.m.

PETER PAN
Lobby Atrium (S)
5:45 p.m. & 7:45 p.m.

PIRATE STITCH
Deck 4, Midship - 7:15 p.m.

(P) - Port Side (S) - Starboard Side

Don't forget your Camera to capture those Magical Moments!
Check here each day for Character appearances.
For detailed Character appearance information, please dial 7-PALS or see the Character Information Board in the Lobby Atrium.
Meet-and-Greets will be advertised for the length of time the line will be open. To avoid disappointment, please meet at start time of appearances.

YOUTH ACTIVITIES THEMED EXPERIENCES

CLUBHOUSE SERIES
focuses on movement and features content which appeals to younger children.

STORYBOOK SERIES
is designed with a strong connection to the Disney classic stories.

JUMP UP! SERIES
includes large group games & movement-oriented activities.

CREATE & INVENT SERIES
will have a tactile focus allowing children to create and admire their work.

IN THE SPOTLIGHT SERIES
focuses on children's stage presence with lots of activities and enthusiasm.

SOLVE IT! SERIES
are less active, but will challenge children with problem/solutions-based activities.

YOUTH ACTIVITIES OPEN HOUSE

Activities for families, adults and children of all ages to enjoy together.

SHIP DIRECTORY

YOUTH ACTIVITIES

| | | |
|-------------------------|--------------|---------------------|
| DISNEY'S OCEANEER CLUB | DECK 5, MID | 9:00 AM - 12:00 MID |
| DISNEY'S OCEANEER LAB | DECK 5, MID | 7:00 AM - 12:00 MID |
| EDGE | DECK 2, MID | 10:00 AM - 1:00 AM |
| VIBE | DECK 11, MID | 12:00 PM - 2:00 AM |
| FLOUNDER'S REEF NURSERY | DECK 5, AFT | 7:00 AM - 11:00 PM |

POOLS

Children under 12 years of age must have adult supervision in all pools.

| | | |
|----------------------|-------------|---------------------|
| GOOFY'S POOL | DECK 9, MID | 9:00 AM - 5:30 PM |
| MICKEY'S POOL | DECK 9, AFT | 8:00 AM - 10:00 PM |
| MICKEY'S SLIDE | DECK 9, AFT | 1:00 PM - 5:00 PM |
| MICKEY'S SPLASH ZONE | DECK 9, AFT | 8:00 AM - 8:00 PM |
| QUIET COVE POOL | DECK 9, FWD | 6:00 AM - 12:00 MID |

RECREATION

| | | |
|---------------------------|--------------|-----------------------------------------|
| PORT ADVENTURES DESK | DECK 3, MID | 7:00 AM - 11:00 AM 7:00 PM - 8:30 PM |
| VISTA FITNESS CENTER | DECK 9, FWD | 6:00 AM - 10:00 PM |
| WIDE WORLD OF SPORTS DECK | DECK 10, FWD | 24 HOURS |

GENERAL INFORMATION

| | | |
|---------------------------|-------------|-----------------------------------------|
| BUENA VISTA THEATRE | DECK 5, AFT | SHOWTIMES |
| DISNEY VACATION CLUB DESK | DECK 4, MID | 5:00 PM - 10:00 PM |
| FUNNEL VISION | DECK 9, MID | SHOWTIMES |
| FUTURE CRUISE SALES DESK | DECK 4, MID | 3:00 PM - 6:00 PM 7:30 PM - 10:00 PM |
| GUEST SERVICES | DECK 3, MID | 24 HOURS |
| HAIR BRAIDING | DECK 9, MID | 2:00 PM - 7:00 PM |
| MEDICAL HEALTH CENTER | DECK 1, FWD | 9:30 AM - 11:00 AM 4:30 PM - 7:00 PM |
| PORT & SHOPPING DESK | DECK 3, MID | 7:30 PM - 8:30 PM |
| PRELUDES | DECK 4, FWD | 5:45 PM - 6:15 PM 8:00 PM - 8:30 PM |
| QUARTER MASTERS (ARCADE) | DECK 9, MID | 24 HOURS |
| SHUTTERS PHOTO GALLERY | DECK 4, AFT | 5:00 PM - 10:00 PM |
| VISTA SPA AND SALON | DECK 9, FWD | 8:00 AM - 10:00 PM |
| WALT DISNEY THEATRE | DECK 4, FWD | SHOWTIMES |

SHOPPING

| | | |
|------------------------|-------------|--------------------|
| ART GALLERY | DECK 4, MID | 7:30 PM - 9:00 PM |
| MICKEY'S MATES | DECK 4, FWD | 4:45 PM - 11:00 PM |
| RADAR TRAP (DUTY FREE) | DECK 3, FWD | 6:00 PM - 11:00 PM |
| TREASURE KETCH | DECK 4, FWD | 4:45 PM - 11:00 PM |

DINNER MENU

Animator's Palate: Pirate Menu
Parrot Cay: Pirate Menu
Triton's: Pirate Menu

Dining Times: 5:45pm & 8:15pm

DRINK OF THE DAY

Sunken Treasure
(Alcoholic)
Pirate Surprise
(Non - Alcoholic)

WEATHER FORECAST

Friday:
Sunny
High:
69°F/21°C

Evening Attire: Pirate or Cruise Casual

DINING & LOUNGES

BREAKFAST

| | | |
|-----------------------|-------------|--------------------|
| BEACH BLANKET BUFFET | DECK 9, AFT | 7:30 AM - 10:00 AM |
| GOOFY'S GALLEY | DECK 9, AFT | 6:30 AM - 9:00 AM |
| PARROT CAY | DECK 3, AFT | 8:00 AM - 10:45 AM |
| TRITON'S (À-LA CARTE) | DECK 3, MID | 8:00 AM - 9:30 AM |

LUNCH

| | | |
|----------------------|-------------|--------------------|
| BEACH BLANKET BUFFET | DECK 9, AFT | 12:00 PM - 2:00 PM |
| GOOFY'S GALLEY | DECK 9, AFT | 10:45 AM - 7:00 PM |
| PINOCCHIO'S PIZZERIA | DECK 9, MID | 10:45 AM - 6:00 PM |
| PLUTO'S DOG HOUSE | DECK 9, AFT | 10:45 AM - 6:00 PM |
| TRITON'S | DECK 3, MID | 12:00 PM - 1:30 PM |

DINNER

| | | |
|----------------------------|--------------|-------------------|
| ANIMATOR'S PALATE | DECK 4, AFT | 5:45 PM & 8:15 PM |
| PARROT CAY | DECK 3, AFT | 5:45 PM & 8:15 PM |
| TRITON'S | DECK 3, MID | 5:45 PM & 8:15 PM |
| PALO (18+) | DECK 10, AFT | 6:00 PM - 9:00 PM |
| BEACH BLANKET (À-LA CARTE) | DECK 9, AFT | 6:30 PM - 8:30 PM |
| PLUTO'S DOG HOUSE | DECK 9, AFT | 6:00 PM - 9:30 PM |

LATE NIGHT SNACKS

| | | |
|-----------------------------|-------------|---------------------|
| BEACH BLANKET PIRATE BUFFET | DECK 9, AFT | 10:30 PM - 11:15 PM |
| ICE CREAM AT GOOFY'S GALLEY | DECK 9, AFT | 7:00 PM - 9:30 PM |
| PINOCCHIO'S PIZZERIA | DECK 9, MID | 9:30 PM - 12:30 AM |

ADDED FEATURES

| | | |
|------------------|------------------------|----------|
| BEVERAGE STATION | DECK 9, AFT, PORT SIDE | 24 HOURS |
| ROOM SERVICE | DIAL 6801 OR 6802 | 24 HOURS |

ENTERTAINMENT - LOUNGES - BARS

Adults must be 21 and older to consume alcoholic beverages.

| | | |
|--------------------------------|--------------|----------------------------------------|
| CADILLAC LOUNGE (18+) | DECK 3, FWD | 5:30 PM - 12:00 MID |
| COVE CAFE (18+) | DECK 9, MID | 6:30 AM - 12:00 MID |
| DIVERSIONS (18+ AFTER 9:00 PM) | DECK 3, FWD | 4:00 PM - 12:00 MID |
| INTERNET CAFE | DECK 3, AFT | 24 HOURS |
| OUTLOOK CAFE (18+) | DECK 10, MID | 10:00 AM - 12:00 MID |
| PINOCCHIO'S PIZZERIA | DECK 9, MID | 9:30 AM - 12:00 MID |
| PLUTO'S DOG HOUSE | DECK 9, AFT | 10:30 AM - 6:00 PM |
| PRELUDES | DECK 4, FWD | 5:45 PM - 6:15 PM 8:00 PM - 8:30 PM |
| PROMENADE LOUNGE (FAMILY) | DECK 3, AFT | 8:00 AM - 12:00 MID |
| SIGNALS (18+) | DECK 9, FWD | 9:30 AM - 12:00 MID |
| STUDIO SEA | DECK 4, MID | SHOWTIMES |
| WAVEBANDS (18+) | DECK 3, FWD | 9:45 PM - 2:00 AM |

Consumers who order raw or partially cooked, ready-to-eat food of animal origin, are hereby informed that the food is not sufficiently cooked to ensure its safety.

All Aboard: 3:45 p.m.

Ship's Agent In Nassau

R.H. Curry & Company; 303 Shirley St., P.O. Box N8168;
Nassau, Bahamas; 242-322-8681 or 242-357-9218