

PERSONAL NAVIGATOR

WEDNESDAY, JANUARY 15, 2014

Sunrise: 7:09 a.m. Sunset: 5:51 p.m.
Evening Attire: Cruise Casual

All Aboard: 4:00 p.m.

Wednesday: Cloudy High: 69°F/21°C

MIAMI



THE GOLDEN MICKKEYS

WALT DISNEY THEATRE
DECK 4, FORWARD
6:15 P.M. & 8:30 P.M.

As a courtesy to all Guests, we kindly advise that the saving of seats is not permitted in the Walt Disney Theatre.

Assistance available at the entrance to the Walt Disney Theatre 30 minutes prior to show time.

Welcome Aboard!

• Your Stateroom & Luggage

Staterooms will be ready at 1:30 p.m. Stateroom hosts will deliver luggage throughout the day until 5:30 p.m.

• Staterooms with Bunk Beds

Bunk beds are recessed into the ceiling and will be prepared during evening turndown service by your Stateroom Host/ess.

• To Change Dining Assignment

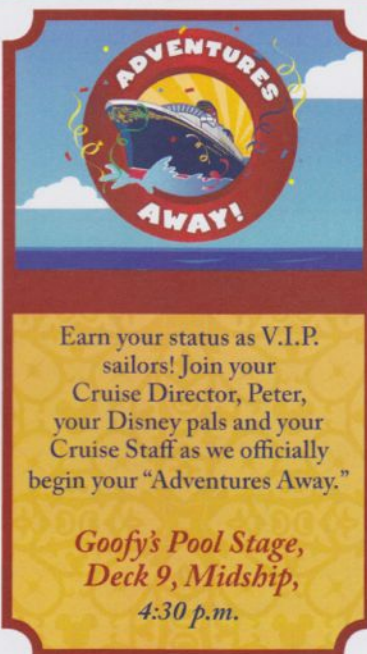
Requests for different seating times will be taken today:
> 11:45 a.m. - 3:30 p.m., Studio Sea, Deck 4, Midship.
> 3:00 p.m. - 5:00 p.m. - Please dial 7-10891 and leave a voicemail.

• Palo Dining Reservations

Reservations are required and will be taken on a first come basis today at:
> 11:45 a.m. - 3:30 p.m., Studio Sea, Deck 4, Midship.
> 3:00 p.m. - 5:00 p.m. - Please dial 7-6843 and leave a voicemail.

• Dinner

Please check your dining tickets for details of your dining rotation, and bring them to your specific dining location. There is no need to wait in line prior to dinner. Dining Rooms open at designated seating times and your table is reserved each night of your cruise.
> 5:45 p.m. - First seating
> 8:15 p.m. - Second seating



Earn your status as V.I.P. sailors! Join your Cruise Director, Peter, your Disney pals and your Cruise Staff as we officially begin your "Adventures Away."

Goofy's Pool Stage,
Deck 9, Midship,
4:30 p.m.

Don't Miss:

Walking Ship Tour

Deck 10, Forward Elevators, Deck 10 - 1:00 & 2:00 p.m.
Enjoy the beauty of the Disney Wonder® with your Cruise Staff in this guided tour.

Orientacion Para Huespedes de Haba Hispana

Promenade Lounge, Deck 3, Aft - 7:30 p.m.
Unete a nuestros anfitriones en Salon Promenade, Cubierta 3 en Popa, para una orientacion en breve para aprender detalles que les ayudaran a disfrutar al maximo de tus vacaciones a bordo de Disney Cruise Line.

Orientacao Para Hospedes de Lingua Portuguesa

Diversions, Deck 3, Forward - 7:30 p.m.
Junte-se ao nosso anfitriao no Diversions, localizado no piso 3 proa, para uma breve orientacao sobre detalhes que lhes ajudarao a disfrutar ao maximo suas ferias a bordo da Disney Cruise Line.

Match Your Mate (18+)

Wavebands, Deck 3, Forward - 10:30 p.m.
It's time to play everyone's favorite couples game show - Match Your Mate!



Get The Picture!

Take home all your stateroom photos from this cruise on a CD! Terms and conditions apply. Visit Shutters on Deck 4, Aft and ask your friendly Shutters staff for more information. Due to high volume of photos and limited time, we will only be accepting the first 100 orders. Hurry! Order yours now.

DINNER MENU

Animator's Palate: Show Dinner
Parrot Cay: Island Dinner
Triton's: French Dinner

DRINK OF THE DAY

Cool Breeze (Alcoholic)
Coco Bali (Non Alcoholic)

IMPORTANT NUMBERS

Fire/Security: 7-3001
Medical Emergency: 7-3000
Health Center: 7-1923

FUN FOR ALL AGES HIGHLIGHTS

PIN TRADING STATION

Preludes, Deck 4, Forward - 7:15 p.m.

A variety of limited-edition pins exclusively designed and created for Disney Cruise Line.



D TUNES FAM JAM

Studio Sea, Deck 4, Midship - 10:00 p.m.

Tune in and rock with us at this family dance party! Spread the word, there will be cool music, new dances, contests and a chance to win great prizes.

FAMILY SUPERSTAR KARAOKE

Studio Sea, Deck 4, Midship - 10:30 p.m.

Join your Cruise Staff in Studio Sea tonight and sing along to your favorite song - fun for everyone.

Cruise Highlights

Wednesday	MIAMI <i>Port Departure: 5:00 pm</i> <i>All Aboard: 4:00 pm</i> <i>Attire: Cruise Casual</i>	THE GOLDEN MICKEYS <i>Walt Disney Theatre</i> <i>6:15 p.m. & 8:30 p.m.</i>
	DISNEY'S CASTAWAY CAY <i>All Ashore: 8:30 am</i> <i>All Aboard: 5:00 pm</i> <i>Attire: Optional Dress Up</i>	TOY STORY - THE MUSICAL <i>Walt Disney Theatre</i> <i>6:15 p.m. & 8:30 p.m.</i>
Thursday	NASSAU <i>All Ashore: 9:00 pm (Thursday)</i> <i>All Aboard: 3:45 pm</i> <i>Attire: Pirate or Cruise Casual</i>	SHOWTIME: PETE MATTHEWS <i>Walt Disney Theatre</i> <i>6:15 p.m. & 8:30 p.m.</i>
Friday	KEY WEST <i>All Ashore: 11:00 am</i> <i>All Aboard: 5:45 pm</i> <i>Attire: Cruise Casual</i>	DISNEY DREAMS: AN ENCHANTED CLASSIC <i>Walt Disney Theatre</i> <i>6:15 p.m. & 8:30 p.m.</i>
Saturday		

Subject to change.



ADULT ACTIVITY HIGHLIGHTS



FITNESS CLASSES

Vista Spa and Salon has a variety of seminars and fitness classes available throughout the cruise.

VISTA SPA FITNESS CLASSES & SEMINARS

Vista Spa Open House - Vista Spa Fitness Center - 1:45 p.m.

Spa Raffle - Vista Spa Fitness Center - 3:15 p.m.

Free Footprint Analysis - Vista Spa Fitness Center - 5:00 p.m.

BEVERAGE SEMINARS

Your Beverage team has a host of tastings and seminars to entertain and educate you.

Please visit Studio Sea on Deck 4, Midship today between

11:45 a.m. - 3:30 p.m. for reservations.

Pre-book these experiences at Guest Services, Deck 3, Midship (nominal fee applies).

Mixology - Wine Tasting - Martini Tasting - Champagne Tasting

Beer Tasting - Cognac Tasting - Whiskey Tasting

Tequila & Margarita Tasting - Chocolate and Beverage Pairing



CLUB 18*21 - ICE BREAKER

Diversions, Deck 3, Forward - 10:00 p.m.

Club 18*21 is an exclusive gathering for young adult Guests. Come meet fellow cruisers and learn about the great activities Disney has to offer to help create the perfect cruise experience.

ROCKIN' ROWDY

Wavebands, Deck 3, Forward - 11:15 p.m.

Join your Club Host as we round up the greatest classic rock and urban country hits. Featuring a bootstomping performance from the Boot Scootin' dancers to start the party.

FEATURED VARIETY ACT THIS VOYAGE



The Comedy & Juggling of Pete Matthews

With his infectious enthusiasm, his rapid-fire wit and highly skilled juggling, Pete will no doubt change your opinion of jugglers. Widely recognised as the UK's Premier Comedy Juggler. Pete Matthews is just another juggler. That's like saying London is just another city!



Club DJ Premonition

Over 12 years of professional DJ services, DJ Premonition is a favorite of crowds of all walks of life. DJ Premonition (Premo) uses his excellent blending and mixing skills to connect and rock the crowd. DJ Premonition's favorite Disney character is Donald Duck.

DIAMOND & \$500 BINGO

Wavebands, Deck 3, Forward

Card Sales - 7:15 p.m.

Game Starts - 7:30 p.m.

Join your Cruise Staff as we raffle off a diamond pendant courtesy of your Shopping Guide, Meagan, as well as playing four games with four cash prizes. You stand a chance to walk home with \$500 should you cover the Big X pattern in 20 numbers or less on the fourth game.

YOUTH ACTIVITIES HIGHLIGHTS



Deck 5, Midship (7-18500) 4:30 p.m. - 11:00 p.m.

Infants and Toddlers can enjoy toys and activities at Flounder's Reef Nursery. Reservations are first come, first served so please stop by!



Deck 5, Midship (7-1440)
(3 - 12 years old)

12:00 p.m. - 3:30 p.m.
4:30 p.m. - 12:00 mid



Deck 5, Midship (7-1445)
(3 - 12 years old)

12:00 p.m. - 3:30 p.m.
4:30 p.m. - 12:00 mid

REGISTRATION FOR 3 - 12 YEAR OLDS

Meet the Youth Activities Team in the Oceaneer Lab and Oceaneer Club, complete your registration & learn all about the Themed Experiences this cruise!



CLUBHOUSE SERIES - The Clubhouse Themed Experiences focus on movement and feature content which appeals to younger children. *Recommended for children seven years and younger.*



STORYBOOK SERIES - The Storybook Series Themed Experiences are designed with a strong connection to the Disney classic stories. *Recommended for children seven years and younger.*



JUMP UP! SERIES - The Jump Up! Themed Experiences will include large group & movement-oriented activities.



CREATE & INVENT SERIES - The Create & Invent Themed Experiences will have a tactile focus allowing children to create and admire their work.



IN THE SPOTLIGHT SERIES - The In The Spotlight Themed Experiences focus on children's stage presence with lots of activities and enthusiasm. *Recommended for children seven years and older.*



SOLVE IT! SERIES - The Solve It! Themed Experiences are less active, but will challenge children with problem/solutions-based activities. *Recommended for children seven years and older.*



YOUTH ACTIVITIES OPEN HOUSE - Activities for families, adults and children of all ages to enjoy together.

DINE & PLAY

As a convenience for families dining at 8:15 p.m., our Youth Activities Counselors will be available at 9:15 p.m. at the entrance of Triton's, Parrot Cay and Animator's Palate dining rooms to bring registered children to join the fun in the Oceaneer Club and Oceaneer Lab.

YOUTH ACTIVITIES OPEN HOUSE

Open House is an opportunity for all to come and participate in a variety of exciting activities and free time in Flounder's Reef Nursery, Oceaneer Club, Oceaneer Lab, Edge and Vibe throughout the cruise. During these times secured programming will still be offered in the other venue for those looking to check their children into care.



Deck 2, Midship (7-5810)
(11 - 14 years old)

12:30 p.m. - 3:30 p.m.
4:30 p.m. - 12:00 mid

Edge is an interactive play space where tweens can play video games, watch television and participate in arts and crafts with kids their own age.

THE DOWNLOAD

10:00 p.m.

Come to Edge and help plan all the fun activities you will be doing this cruise with your new friends!



Deck 11, Midship (7-1456)
(14 - 17 years old)

12:30 p.m. - 3:30 p.m.
4:30 p.m. - 12:30 a.m.

THE DOWNLOAD

10:30 p.m.

Come up to Vibe and help plan all the fun activities you will be doing this cruise with your new friends!

BUENA VISTA THEATRE

Feature Movies this Voyage

WEDNESDAY - MIAMI

5:45 p.m.	PG	Planes	XX DOLBY.3D
8:15 p.m.	PG	Planes	XX DOLBY.3D
10:15 p.m.	PG	Frozen	XX DOLBY.3D

THURSDAY - DISNEY'S CASTAWAY CAY

8:30 a.m.	PG	Frozen	cc Open Captioning
12:45 p.m.	G	Monsters University	XX DOLBY.3D
3:00 p.m.	PG-13	Thor: The Dark World	XX DOLBY.3D
5:30 p.m.	PG	Frozen	
8:00 p.m.	PG	Frozen	
10:30 p.m.	PG-13	Saving Mr. Banks	

FRIDAY - NASSAU

8:30 a.m.	PG	Planes	cc Open Captioning
11:00 a.m.	PG-13	Saving Mr. Banks	
2:30 p.m.	PG	Frozen	XX DOLBY.3D
5:15 p.m.	PG-13	Saving Mr. Banks	
8:00 p.m.	PG-13	Saving Mr. Banks	
10:45 p.m.	PG-13	Thor: The Dark World	XX DOLBY.3D

SATURDAY - KEY WEST

8:30 a.m.	PG-13	Saving Mr. Banks	cc Open Captioning
1:00 p.m.	G	Monsters University	
3:15 p.m.	PG	Frozen	XX DOLBY.3D
5:30 p.m.	PG-13	Thor: The Dark World	
8:00 p.m.	PG-13	Thor: The Dark World	
10:30 p.m.	PG	Frozen	

Subject to change.



FAMILY GAME SHOW

Put your family's Disney knowledge to the ultimate test, or play along from our live studio audience.

Studio Sea,
Deck 4, Midship,
7:30 & 9:30 p.m.



ADULT GAME SHOW

It's time to play everyone's favorite couple's game show, Match your Mate!

WaveBands (18+),
Deck 3, Forward,
10:30 p.m.

MORE TO ENJOY WHILE ONBOARD



DISNEY VACATION CLUB® GROUP PREVIEW

Want to learn more about taking magical vacations year after year? Please see a Disney Vacation Club representative on Deck 4, Midship, or call 7-2805 from your stateroom phone for more information about our interactive group presentation.



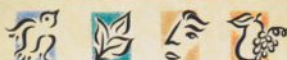
NEW FOR 2014!

In 2014 Disney Cruise Line will be sailing to more destinations than ever before! Stop by the Future Cruise Sales Desk, Deck 4, Midship, to learn more about these exciting new itineraries and home ports.



PORT AND SHOPPING INFORMATION

Welcome Aboard! Do not miss the Port & Shopping Show happening today at 2:30 p.m. in the Buena Vista Theatre, Deck 5, Aft! Here you will find out about all the amazing shopping in Key West and Nassau. Everyone in attendance will receive a FREE charm bracelet.



VISTA SPA

SPA AND WIN

Today Only visit the on board spa for a Spa Tour and pick up a Free raffle ticket. You can win up to a \$500 value in the spa credit toward your favorite signature treatments. Your entry must be submitted to the Vista Spa. Raffle begins at 3:15 p.m.

Deck 9, Forward - Phone: 7-1465

2014 DISNEY CRUISE LINE MERCHANDISE

Step into Mickey's Mates today and commemorate your Disney cruise with a wide selection of 2014 Disney Cruise Line Merchandise. Mickey's Mates, Deck 4, Forward.



WELCOME ABOARD RAFFLE

Your embarkation photos will be available for viewing at 6:00 p.m. Visit Shutters and fill in a raffle entry for a chance to win two 8x10 photos!

QUARTER MASTERS ARCADE

Where can you fly a fighter jet, save a princess, race NASCAR's greatest and beat bad guys all before dinner? Quarter Masters Arcade is on Deck 9, Midship, where the champions play.

WIRELESS INTERNET: KEEPING YOU CONNECTED AT SEA

\$0.75 per minute or save money by buying blocks of time. \$27.50 for 50 minutes, \$40 for 100 minutes and \$75 for 250 minutes. Wireless information sheets are available at Guest Services, Deck 3, Midship, Internet Cafe, Deck 3, Aft, Cove Cafe, Deck 9, Midship and Outlook Cafe, Deck 10, Midship.

Due to the technology involved and satellite connectivity, the onboard internet service will be noticeably slower than you may be accustomed to and might at times be interrupted or unavailable.

RELIGIOUS SERVICES

Groups who need a location to practice their faith may contact Guest Services for availability information.



Visit the friendly team at the Port Adventures Desk, Deck 3, Midship to learn more about the amazing excursions we have to offer for Key West, Nassau and even on our very own Private Island of Disney's Castaway Cay.

There is an adventure for everyone on your Disney Wonder® vacation.

SHOPPING

ART GALLERY - THOMAS KINKADE PAINTINGS

Stop by the Art Gallery today to view our selection of Thomas Kinkade Limited Edition Disney paintings. While there, see if you can find some hidden characters in the artwork. Deck 4, Midship. Our Hostess is available between 7:00 p.m. and 9:00 p.m. for any hints!

2014 DISNEY CRUISE LINE MERCHANDISE

Step into Mickey's Mates today and commemorate your Disney cruise with a wide selection of 2014 Disney Cruise Line merchandise. From t-shirts to photo albums and more, you are sure to find a special souvenir for the whole family. Deck 4, Forward.

DUTY FREE FRAGRANCE

Find top designer fragrances in Treasure Ketch, all available at Duty Free pricing. Choose from varieties such as Chanel, Ralph Lauren, Issey Miyake and many more.

NEW DOONEY & BOURKE ONBOARD

Loved for their fine leather and unique designs, Dooney & Bourke creates styles that are sure to inspire. Visit Treasure Ketch and check out the new Dooney & Bourke handbags designed especially for Disney Cruise Line®. Deck 4, Forward.

CHAMILIA JEWELRY

Create and personalize your own Chamilia Bracelet. Choose from a selection of sterling silver beads with many of them featuring your favorite Disney Characters! Available in Treasure Ketch.

NEW DISNEY CRUISE LINE COMPASS COLLECTION MERCHANDISE

Visit Treasure Ketch and check out the wide selection of merchandise from the new Compass collection. From t-shirts to mugs featuring nautical and Disney Cruise Line themed icons, commemorate your Disney cruise with one of these great souvenirs. Deck 4, Forward.

Due to port regulations, when the ship is docked, the stores will remain closed.

IMPORTANT INFORMATION

Security Notice

All Guests (including Children) who wish to disembark or embark the ship are required to present their Key to the World card at the gangway. A photo ID is also required for those Guests who are 18 years of age or older. Guests under the age of 18 are required to have a parent, guardian or other responsible adult sign an authorization form at the Guest Service Desk if they wish to go ashore unaccompanied or with any adult from another stateroom.

Sunscreen/Insect Repellent Advisory

Please remember to use plenty of sunscreen and mosquito repellent when venturing ashore.

Cold and Flu Reminder

Please wash hands frequently and thoroughly, particularly before meals. Contact the Health Center by dialing 7-1923, should anyone in your party become ill.

Inclement Weather

For the safety of all Guests, outdoor events may be changed due to unforeseen weather conditions.

Corridor Quiet Hours

As a courtesy to all our Guests, please recognize quiet hallway hours from 10:00 p.m. till 8:00 a.m.

Environmental Message

With Disney's commitment to the Environment, please refrain from throwing anything over the Ship's side. Thank you.

No Reserved Seats Policy

As a courtesy to all Guests we kindly advise that the saving of seats is not permitted in the Walt Disney Theatre, and the saving of the sun loungers is not permitted on Deck 9 and 10. Items left unattended will be returned to lost and found at Guest Services, Deck 3, Midship.

Smoking

For the comfort of our guests, the following areas are designated as smoking areas:

- * Deck 10, forward, Starboard side
- * Deck 9, forward, Starboard side at Quiet Cove
- * Deck 4, aft, port side from 6:00 p.m. to 6:00 a.m. only (all of Deck 4 is non-smoking from 6:00 a.m. to 6:00 p.m.)

Smoking is prohibited inside all guest staterooms and on stateroom verandahs. Guest found smoking in their staterooms or on their verandahs will be charged a \$250 stateroom recovery fee. Electronic cigarettes may only be used in designated smoking areas.

Walt Disney Theatre

Theatrical performances may use artificial fog, strobe lights, pyrotechnics and other special effects. For the safety of our performers and the comfort of those around you, the use of any photography or video recording device or any electronic equipment is prohibited.

Verandah Safety

Please do not leave any combustible materials on your balcony when not present in your stateroom for safety reasons.

WELCOME ABOARD!



Mandatory Life Boat Drill

4:00 PM

(All Guests must attend)
You will not need to wear your life jacket,
however it is critical that you bring
your Key To The World card
to your Assembly Station.
All ship services will be suspended
between 3:30 and 4:30 p.m.

Your Assembly Station
is indicated on your
Key To The World card.



Earn your status as V.I.P. sailors! Join your Cruise Director, Peter, your Disney pals and your Cruise Staff as we officially begin your "Adventures Away."

Goofy's Pool Stage,
Deck 9, Midship,
4:30 p.m.

Fold along the dotted lines and take me with you so you don't miss any of the fun!



Afternoon	1:45	2:00	2:15	2:30	2:45	3:00	3:15	3:30	3:45	4:00	4:15	4:30	4:45	5:00	5:15	5:30	5:45	6:00	6:15	6:30	6:45
FUNNEL VISION	Poolside Jams with Cruise Staff DJ Funnel Vision										Adventures Away Funnel Vision										
BUENA VISTA THEATRE	Port & Shopping Talk Buena Vista Theatre										Planes (PG) DOLBY 3D Duration: 1 Hour 32 Minutes										
CHARACTER	For detailed character appearances, call 7-PALS or refer to the Character Screen in the Lobby Atrium.										Mickey Lobby Atrium (P)										
FUN FOR ALL AGES	Walking Ship Tour (DK 10, Fwd Elevators (Earlier tour starts at 1:00 p.m.)) Poolside Jams with Cruise Staff DJ Goofy's Pool Stage										Club DJ Premonition Goofy's Pool Stage										
ADULTS	Live Guitar with Mike Archer Quiet Cove Pool										Live Music with Midtown Promenade Lounge										
VIBE	Vista Spa Open House Vista Spa Fitness Center										Footprint Analysis Vista Spa Fitness Center										
EDGE	Youth Activities Open House										Youth Activities Open House										
OCEANEER LAB	Youth Activities Open House & Registration										Youth Activities Open House										
OCEANEER CLUB	Youth Activities Open House & Registration										Youth Activities Open House										

All ship services will be suspended during this time for the Mandatory Life Boat Drill scheduled for 4:00 p.m. along Deck 4.

Refer to the posted drill instructions on the back of your stateroom door prior to heading to Deck 4. Please bring your Key to the World Card to the Life Boat Drill.

Live Guitar with Mike Archer
Quiet Cove Pool

Red Carpet Arrivals
THE GOLDEN MICKEYS
Walt Disney Theatre

Symbol for activities that will be repeated during the cruise



Evening	7:00	7:15	7:30	7:45	8:00	8:15	8:30	8:45	9:00	9:15	9:30	9:45	10:00	10:15	10:30	10:45	11:00	11:15	11:30	11:45	12:00
FUNNEL VISION	The Lion King (G) Funnel Vision										Marry Poppins (G) Funnel Vision										
BUENA VISTA THEATRE	Planes (PG) DOLBY 3D Duration: 1 Hour 32 Minutes										Frozen (PG) DOLBY 3D Duration: 1 Hour 48 Minutes										
CHARACTER	Goofy Lobby Atrium (P)										Minnie Lobby Atrium (P)										
FUN FOR ALL AGES	Bingo Pre Sales Diamond & \$500 Bingo Wavebands Pin Trading Preludes Mickey Mania Studio Sea Orientacion Para Huéspedes de Habla Hispana Promenade Lounge										Red Carpet Arrivals THE GOLDEN MICKEYS Walt Disney Theatre										
ADULTS	Live Music with Midtown Promenade Lounge										Club DJ Premonition Promenade Lounge										
VIBE	Teen Choice										Ice Breakers										
EDGE	Chillin' in Edge										The Download										
OCEANEER LAB	Meet Your Counselors										Welcome Party										
OCEANEER CLUB	Welcome Party										Memory Wall										

IN THE SPOTLIGHT SERIES
SOLVE IT! SERIES

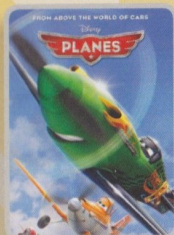
JUMP UP! SERIES
CREATE & INVENT SERIES
OPEN HOUSE

CLUBHOUSE SERIES
STORYBOOK SERIES

WEDNESDAY, JANUARY 15, 2014 - MIAMI

BUENA VISTA THEATRE

DOLBY 3D



5:45 & 8:15 p.m.
Duration:
1 hr 32 mins
Rating: PG

DOLBY 3D



10:15 p.m.
Duration:
1 hr 48 mins
Rating: PG

Character Appearances

ADVENTURES AWAY

Goofy's Pool Stage - 4:30 p.m.

MICKY MOUSE

Lobby Atrium (P)
5:15 p.m. & 7:45 p.m.

PLUTO

Lobby Atrium (P) - 5:45 p.m.

THE GOLDEN MICKEYS

Walt Disney Theatre
6:15 p.m. & 8:30 p.m.

GOOFY

Lobby Atrium (P) - 7:15 p.m.

MINNIE MOUSE

Lobby Atrium (P) - 9:45 p.m.



(P) - Port Side (S) - Starboard Side

Don't forget your Camera to capture those Magical Moments!

Check here each day for Character appearances.

For detailed Character appearance information, please dial 7-PALS or see the Character Information Board in the Lobby Atrium.

Meet-and-Greets will be advertised for the length of time the line will be open. To avoid disappointment, please meet at start time of appearances.

YOUTH ACTIVITIES THEMED EXPERIENCES

CLUBHOUSE SERIES

focuses on movement and features content which appeals to younger children.

STORYBOOK SERIES

is designed with a strong connection to the Disney classic stories.

JUMP UP! SERIES

includes large group games & movement-oriented activities.

CREATE & INVENT SERIES

will have a tactile focus allowing children to create and admire their work.

IN THE SPOTLIGHT SERIES

focuses on children's stage presence with lots of activities and enthusiasm.

SOLVE IT! SERIES

are less active, but will challenge children with problem/solutions-based activities.

YOUTH ACTIVITIES OPEN HOUSE

Activities for families, adults and children of all ages to enjoy together.

SHIP DIRECTORY

YOUTH ACTIVITIES

DISNEY'S OCEANEER CLUB	DECK 5, MID	12:00 PM - 3:30 PM
		4:30 PM - 12:00 MID
DISNEY'S OCEANEER LAB	DECK 5, MID	12:00 PM - 3:30 PM
		4:30 PM - 12:00 MID
EDGE	DECK 2, MID	12:30 PM - 3:30 PM
		4:30 PM - 12:00 MID
VIBE	DECK 11, MID	12:30 PM - 3:30 PM
		4:30 PM - 12:30 AM
FLOUNDER'S REEF NURSERY	DECK 5, AFT	4:30 PM - 11:00 PM

POOLS

Children under 12 years of age must have adult supervision in all pools.

GOOFY'S POOL	DECK 9, MID	12:00 PM - 3:30 PM
		8:00 PM - 10:00 PM
MICKY'S POOL	DECK 9, AFT	12:00 PM - 3:30 PM
		4:30 PM - 10:00 PM
MICKY'S SLIDE	DECK 9, AFT	12:30 PM - 3:30 PM
		4:30 PM - 5:30 PM
MICKY'S SPLASH ZONE	DECK 9, AFT	12:00 PM - 3:30 PM
		4:30 PM - 8:00 PM
QUIET COVE POOL	DECK 9, FWD	12:00 PM - 3:30 PM
		4:30 PM - 12:00 MID

RECREATION

PORT ADVENTURES DESK	DECK 3, MID	12:00 PM - 3:30 PM
		4:30 PM - 6:00 PM
		7:00 PM - 8:30 PM
VISTA FITNESS CENTER	DECK 9, FWD	12:00 PM - 10:00 PM
WIDE WORLD OF SPORTS DECK	DECK 10, FWD	24 HOURS

GENERAL INFORMATION

BUENA VISTA THEATRE	DECK 5, AFT	SHOWTIMES
DISNEY VACATION CLUB DESK	DECK 4, MID	5:00 PM - 8:00 PM
FUTURE CRUISE SALES DESK	DECK 4, MID	7:00 PM - 8:30 PM
FUNNEL VISION	DECK 9, MID	SHOWTIMES
GUEST SERVICES	DECK 3, MID	24 HOURS
HAIR BRAIDING	DECK 9, MID	12:30 PM - 3:00 PM
		4:30 PM - 7:00 PM
MEDICAL HEALTH CENTER	DECK 1, FWD	4:30 PM - 7:00 PM
PORT & SHOPPING DESK	DECK 3, MID	7:30 PM - 8:30 PM
PRELUDES	DECK 4, FWD	5:45 PM - 6:15 PM
		8:00 PM - 8:30 PM
QUARTER MASTERS (ARCADE)	DECK 9, MID	24 HOURS
SHUTTERS PHOTO GALLERY	DECK 4, AFT	5:30 PM - 11:00 PM
VISTA SPA AND SALON	DECK 9, FWD	12:00 PM - 10:00 PM
WALT DISNEY THEATRE	DECK 4, FWD	SHOWTIMES

SHOPPING

ART GALLERY	DECK 4, MID	7:00 PM - 9:00 PM
MICKY'S MATES	DECK 4, FWD	6:15 PM - 11:00 PM
RADAR TRAP (DUTY FREE)	DECK 3, FWD	6:15 PM - 10:30 PM
TREASURE KETCH	DECK 4, FWD	6:15 PM - 11:00 PM

DINNER MENU

Animator's Palate: Show Dinner
Parrot Cay: Island Dinner
Triton's: French Dinner

DRINK OF THE DAY

Cool Breeze
(Alcoholic)
Coco Bali
(Non Alcoholic)

WEATHER FORECAST

Wednesday:
Cloudy
High:
69°F/21°C

Evening Attire: Cruise Casual

DINING & LOUNGES

LUNCH

BEACH BLANKET BUFFET	DECK 9, AFT	11:45 AM - 3:15 PM
GOOFY'S GALLEY	DECK 9, AFT	11:30 AM - 3:30 PM
PARROT CAY	DECK 3, AFT	11:45 AM - 2:30 PM
PINOCCHIO'S PIZZERIA	DECK 9, MID	11:30 AM - 3:30 PM
PLUTO'S DOG HOUSE	DECK 9, AFT	11:30 AM - 3:30 PM

DINNER

ANIMATOR'S PALATE	DECK 4, AFT	5:45 PM & 8:15 PM
PARROT CAY	DECK 3, AFT	5:45 PM & 8:15 PM
TRITON'S	DECK 3, MID	5:45 PM & 8:15 PM
PALO* (18+)	DECK 10, AFT	6:00 PM - 9:00 PM
GOOFY'S GALLEY	DECK 9, AFT	4:15 PM - 7:00 PM
PINOCCHIO'S PIZZERIA	DECK 9, MID	4:15 PM - 7:00 PM
PLUTO'S DOG HOUSE	DECK 9, AFT	4:15 PM - 9:30 PM

LATE NIGHT SNACKS

DIVERSIONS	DECK 3, FWD	11:00 PM - 12:00 MID
ICE CREAM AT GOOFY'S GALLEY	DECK 9, AFT	7:00 PM - 11:00 PM
PINOCCHIO'S PIZZERIA	DECK 9, MID	9:30 PM - 12:00 MID
PROMENADE LOUNGE	DECK 3, AFT	11:00 PM - 12:00 MID

ADDED FEATURES

BEVERAGE STATION	DECK 9, AFT, PORT SIDE	24 HOURS
ROOM SERVICE	DIAL 6801 OR 6802	24 HOURS

ENTERTAINMENT - LOUNGES - BARS

Adults must be 21 and older to consume alcoholic beverages.

CADILLAC LOUNGE (18+)	DECK 3, FWD	5:30 PM - 12:00 MID
COVE CAFE (18+)	DECK 9, MID	11:45 AM - 12:00 MID
DIVERSIONS (18+ AFTER 9:00 PM)	DECK 3, FWD	11:45 AM - 12:00 MID
INTERNET CAFE	DECK 3, AFT	24 HOURS
OUTLOOK CAFE (18+)	DECK 10, MID	11:45 AM - 12:00 MID
PINOCCHIO'S PIZZERIA	DECK 9, MID	11:45 AM - 12:00 MID
PLUTO'S DOG HOUSE	DECK 9, AFT	11:45 AM - 6:00 PM
PRELUDES	DECK 4, FWD	5:45 PM - 6:15 PM
		8:00 PM - 8:30 PM
PROMENADE LOUNGE (FAMILY)	DECK 3, AFT	12:00 PM - 12:00 MID
SIGNALS (18+)	DECK 9, FWD	11:45 PM - 10:30 PM
STUDIO SEA	DECK 4, MID	SHOWTIMES
WAVEBANDS (18+)	DECK 3, FWD	7:30 PM - 2:00 AM

Consumers who order raw or partially cooked, ready-to-eat food of animal origin, are hereby informed that the food is not sufficiently cooked to ensure its safety.

Disney CRUISE LINE.

PORT ADVENTURES

Explore and more with our carefully selected Port Adventures. Visit the Port Adventures Desk, Deck 3, Midship to find out more.

All Aboard: 4:00 p.m.

IMPORTANT NUMBERS

Fire/Security: 7-3001
Medical EMERGENCY: 7-3000
Health Center: 7-1923