

PERSONAL NAVIGATOR

Disney MAGIC

THURSDAY, JANUARY 9, 2014

Sunrise: 7:07 a.m. Sunset: 5:44 p.m.
Evening Attire: Cruise Casual

Thursday: Partly Cloudy High: 77°F/25°C
Friday: Partly Cloudy High: 77°F/25°C

DAY AT SEA

Disney DREAMS

AN ENCHANTED CLASSIC

*In this spectacular fantasy, a little girl discovers the power of her dreams.
Fly through the air with Peter Pan and your imagination, as many Classic Disney Characters
spring to life. With a little Faith, Trust and Pixie Dust you'll see that your dreams can come true!*

WALT DISNEY THEATRE
Deck 4, Forward
6:15 p.m. & 8:30 p.m.

As a courtesy to all Guests, we kindly advise that the saving of seats is **not** permitted in the Walt Disney Theatre.



Assistance available at the entrance to the Walt Disney Theatre 30 minutes prior to show time.

Disney MAGIC Fun Facts

Tonnage: 84,000

Length Overall: 984 Feet

Ship's Registry: The Bahamas

Important Dates

Keel Laid: October 31, 1996

Launch Date: April 12, 1997

Inaugural Cruise: July 30, 1998

• The Magic was built by a process called Jumboisation (in 2 separate sections) in Italy at the Fincantieri Maghera Shipyard (stern) and the Fincantieri Ancona Shipyard (bow). The joint of the ship is just in front of Lumiere's.

• The anchor of the Disney Magic weighs 28,200 lbs (12,802.8kg) - the same weight as three elephants.

• Over 50 nationalities make up the 960 Crew Members on board.

• Sorcerer Mickey stands proudly 10 ft tall on the bow of the ship. There are other characters in the artwork around him.

• Goofy hangs 20 ft tall, painting the finishing touches on the stern.

'TIL WE MEET AGAIN

FAREWELL SHOW

The world-famous Disney Characters and some of your new friends from the Disney Magic stage shows bid you a charming farewell.

Lobby Atrium,
Deck 3, Midship,
10:00 p.m.

Don't Miss:

Anyone Can Cook - Apple Strudel (18+)

D lounge, Deck 4, Midship - 10:15 a.m.

From our galley to yours. Join our chefs as they show you how to prepare delicious dishes. Today's Menu - Apple Strudel

Jack-Jack's Incredible Diaper Dash

Lobby Atrium, Deck 3, Midship - 11:45 a.m.

Calling all baby Cruisers! It's time to take to the mat to see who's the fastest crawler of the seven seas! Register your baby 15 minutes prior to the big race.

Adult Variety Show: Max Winfrey (18+)

Fathoms, Deck 3, Forward - 10:45 p.m.

Featuring the Comedy & Juggling of Max Winfrey, in this exclusive adult cabaret style show.

80's Flashback

Fathoms, Deck 3, Forward - 11:15 p.m.

The 80's are back! Join your Cruise Staff team, in testing your 80's knowledge in this high energy 80's revival.

Debark Talk Broadcast

Important information regarding disembarkation procedures for Port Canaveral and your journey home will be covered in this debarkation briefing. The broadcast will be shown continuously on channel 24-2 of your stateroom television for your convenience.

Thank you in advance for completing your comment card.

DINNER MENU

Animator's Palate: Show Dinner
Carioca's: South American Dinner
Lumière's: French Dinner

DRINK OF THE DAY

Mojito (Alcoholic)
No-Jito (Non Alcoholic)

IMPORTANT NUMBERS

Fire/Security: 7-3001
Medical Emergency: 7-3000
Health Center: 7-1923

YOUTH ACTIVITIES HIGHLIGHTS

DINE & PLAY

A convenience for families dining at 8:15 p.m., our Youth Activities Counselors will be available at 9:15 p.m. at the entrance of Lumière's, Carioca's and Animator's Palate dining rooms to bring registered children to join the fun in the Oceaneer Club and Oceaneer Lab.



Deck 5, Aft (7-5864) 8:00 a.m. - 11:00 p.m.

Infants and Toddlers can enjoy toys and activities at It's a Small World Nursery. Reservations are first come, first served so please stop by!



Deck 5, Midship (7-1440) 9:00 a.m. - 12:00 mid
(3-12 years old)

MAGIC SHOW

9:30 a.m.

The Magnificent Magician will demonstrate to you some of the best known magic tricks on the sea.

ALADDIN'S FUN ADVENTURES

12:15 p.m.

Come join us as we go on a fun-filled Arabian adventure, discover a flying carpet and find the hidden Genie.



Deck 5, Midship (7-1445) 9:00 a.m. - 12:00 mid
(3-12 years old)

GOOFY FILES

9:15 a.m.

This fascinating activity takes you into the invisible world of forensics where you will discover different ways to identify the suspect of a crime.

SUPER SLOPPY SCIENCE

10:30 a.m. & 10:30 p.m.

Join Professor Make-O-Mess in some of the most extreme experiments you will ever see in the world of Super Sloppy Science!



Deck 2, Midship (7-5816) 10:00 a.m. - 12:00 mid
(11-14 years old)

ANIMATION CELLS

1:30 p.m.

Learn what it takes to be a Disney Animator, then put your new skills to the test as you create your very own animation cell.

GENDER WARS

4:30 p.m.

It's the battle of girls vs. boys... Who will dominate to win the ultimate battle?



Deck 11, Midship (7-18517) 10:00 a.m. - 1:00 a.m.
(14-17 years old)

GOTCHA

11:00 a.m.

You will try to eliminate your victim by various methods collecting points throughout the day, last person standing with the most points wins.

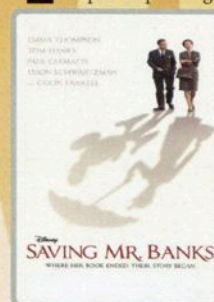
BUENA VISTA THEATRE

Today's Movies

OC - Open Captioning

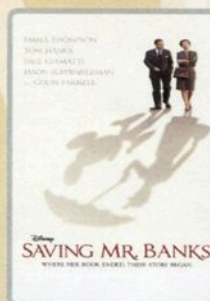


8:00 a.m., 5:30 p.m. & 8:00 p.m.
Duration: 1 hr 48 mins
Rating: PG



10:15 a.m.,
Duration: 2 hrs 5 mins
Rating: PG-13

DOLBY 3D



3:00 p.m. & 10:45 p.m.
Duration: 2 hrs 5 mins
Rating: PG-13

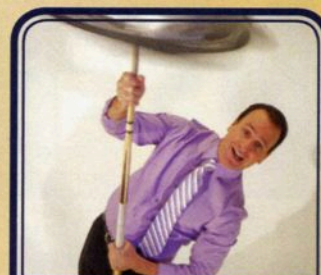


12:45 p.m.
Duration: 1 hr 48 mins
Rating: PG



Be a singing sensation when you and your family take to the stage and sing along to your favorite song.

**D Lounge,
Deck 4, Midship,
10:30 p.m.**



ADULT VARIETY

Featuring the Physical Comedy of Max Winfrey, as he entertains you in this adult exclusive show.

**Fathoms (18+),
Deck 3, Forward,
10:45 p.m.**

YOUTH ACTIVITIES OPEN HOUSE

Open House is an opportunity for all to come and participate in a variety of exciting activities and free time in the Oceaneer Club, Oceaneer Lab, Edge, Vibe, and It's a Small World Nursery throughout the cruise. During these times secured programming will still be offered in the other venues for those looking to check their children into care.

Vibe: 10:00 a.m. - 11:00 a.m.

Disney's Oceaneer Lab: 2:00 p.m. - 4:00 p.m.

Edge: 10:00 a.m. - 11:00 a.m.

Disney's Oceaneer Club: 9:00 a.m. - 10:30 a.m.

FUN FOR ALL AGES HIGHLIGHTS

DISNEY TRIVIA

Promenade Lounge, Deck 3, Aft - 9:00 a.m.

Navigate your way through a round of questions to test how much you really know about Disney.



JACK-JACK'S INCREDIBLE DIAPER DASH

Lobby Atrium, Deck 3, Midship - 11:45 a.m.

Calling all baby Cruisers! It's time to take to the mat to see who's the fastest crawler of the seven seas! Register your baby 15 minutes prior to the big race.

MICKEY 200

Fathoms, Deck 3, Forward - 12:15 p.m.

Don't eat your vegetables... race them in this wild and wacky charge to the finish line. May the best veggie win! (Limited Availability)

DISNEY TUNES TRIVIA

Promenade Lounge, Deck 3, Aft - 1:45 p.m.

Determine just how well you know your Disney Tunes with your Cruise Staff.

SO YOU THINK YOU KNOW YOUR FAMILY?

D Lounge, Deck 4, Midship - 2:45 p.m.

This fun-filled family game show is always full of surprises. Find out how well you know, or don't know your family!

PLAYHOUSE D LOUNGE

D Lounge, Deck 4, Midship - 5:00 p.m.

Calling our youngest of cruisers! Here is a special playtime that is just for you. Come meet new friends; and join in on the fun as your Cruise Staff team takes you through interactive activities made just for you!

FAMILY SUPERSTAR KARAOKE

D Lounge, Deck 4, Midship - 10:30 p.m.

Join your Cruise Staff in D Lounge tonight and sing along to your favorite song - fun for everyone.

ADULT ACTIVITY HIGHLIGHTS

VISTA SPA FITNESS CLASSES & SEMINARS

Pilates - Senses Spa Fitness Center - 7:30 a.m.

Body Sculpt Boot Camp - Senses Spa Fitness Center - 9:00 a.m.

Detox for Health & Weight Loss - Senses Spa & Salon - 10:15 a.m.

Back Pain Solutions - Senses Spa & Salon - 11:15 a.m.

Secrets To A Flatter Stomach - Senses Spa & Salon - 2:00 p.m.

Group Cycling - Senses Spa & Salon - 4:00 p.m.



TASTING CLASSES

Wine Tasting (21+) - Keys - 12:30 p.m.

Martini Tasting (21+) - Keys - 2:30 p.m.

Beer Tasting (21+) - O'Gills Pub - 4:30 p.m.

Please make reservations for tastings at Guest Services for a nominal fee.

Tasting Seminars are only for Guests 21 and Older.



CLUB 18*21 - LUNCH

Lumiere's, Deck 3, Midship - 12:15 p.m.

CLUB 18*21 - GAME CHALLENGE

O'Gills Pub, Deck 3, Forward - 5:00 p.m.

CLUB 18*21 - MIXER

O'Gills Pub, Deck 3, Forward - 10:00 p.m.



ESPN DREAM TEAM DRAFT DAY - BASEBALL

O'Gills Pub, Deck 3, Forward - 2:30 p.m.

Play ball! Join the "Commissioner" and engage in this interactive fantasy baseball draft unlike anything you've ever seen! Can YOU draft the greatest baseball team of All-Time?

ART OF THE THEME SHOW TOUR

Palo, Deck 10, Aft - 4:00 p.m.

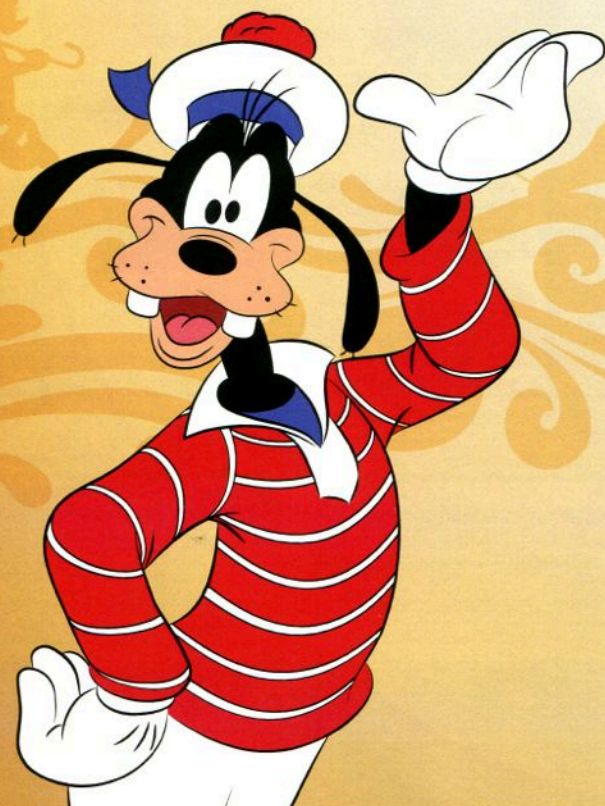
Join us on a guided ship tour and discover the key ingredients that make the Disney Magic.



80'S FLASHBACK

Fathoms, Deck 3, Forward - 11:15 p.m.

The 80's are back! Join your Cruise Staff team, in testing your 80's knowledge in this high energy 80's revival.



\$10,000 MEGA JACKPOT BINGO

Fathoms, Deck 3, Forward

Card Sales - 10:30 a.m.

Game Starts - 10:45 a.m.

It's Big, it's Massive, it's Supersized! It's \$10,000 MEGA Jackpot Bingo!

Take home \$10,000 if you can cover your card in 46 numbers or less.

If not, we carry on to play for the biggest cash prize of the session.

FINAL JACKPOT BINGO

Fathoms, Deck 3, Forward

Card Sales - 3:15 p.m.

Game Starts - 3:45 p.m.

The snowball jackpot **MUST BE WON** at this final session! Who will be the lucky winner?

MORE TO ENJOY WHILE ONBOARD



VISIT THE FUTURE CRUISE SALES DESK EARLY TODAY

Avoid the evening rush and visit the Future Cruise Sales Desk early for your last chance to save 10% on your next cruise, receive up to a \$200 onboard credit, and pay a reduced deposit. Future Cruise Sales Desk, Deck 4, Midship.



DISNEY VACATION CLUB

Visit the Disney Vacation Club information desk and ask us about show times where you will learn how to turn every vacation into the vacation of a lifetime.



ENJOY YOUR DAY AT SEA!

Take the time to come and visit the beautifully reimagined Senses Spa & Salon and learn all about our variety of products and services!

Deck 9, Forward - Phone : 7-1465

SOPHIA FIORI

Industry leaders in vivid colored diamonds, and more specifically Caribbean blue diamonds – one of the single most popular purchases at sea because it reminds everyone of the colors of the breathtaking ocean!

Whitecaps, Deck 4, Forward

Sophia Fiori



GET THE PICTURE!

Get all your stateroom photos on a disc for one great price!
Update and get all your printed photos too!

**Please note that photos are available for viewing on our interactive photo kiosks approximately five hours after being taken and are only available for purchase during this cruise.*

SURF AT SEA

\$0.75 per minute or save money by buying blocks of time. \$27.50 for 50 minutes, \$40.00 for 100 minutes and \$75.00 for 250 minutes. Wireless information sheets are available at Guest Services, Deck 3, Midship and the Internet Cafe, Deck 3, Aft. Due to the technology involved and satellite connectivity, the onboard internet service will be noticeably slower than you may be accustomed to and might at times be interrupted or unavailable.

QUARTER MASTERS ARCADE

You can drive a Hummer, be The Fast and The Furious, plus hop on a Crazy Taxi with no license required! All this at Quarter Masters Arcade, located on Deck 9, Midship.

EXPRESS WALK OFF

This option allows you to take your luggage off the ship at your leisure once the ship has been cleared by the local authorities. You won't need to wait for your luggage to enter the terminal and there is no need to claim it inside the terminal building. Please note that no assistance with luggage is provided for this option.

EXPRESS CHECK OUT

If you have a credit card on file, you qualify for express check out. No need to visit Guest Services to settle your account.

SHOPPING

SOPHIA FIORI GUESS THE CARAT WEIGHT

Whoever guesses closest wins a 5 carat Midnight Sapphire or a pair of Midnight Sapphire Stud Earrings! Winners Announced tonight at 7:30 p.m. Must be present to win. Whitecaps, Deck 4, Midship.

CAPTAIN'S SIGNING

Don't miss your chance to meet the Master of the Disney Magic! Stop by Whitecaps today at 12:15pm where you can have your cruise mementos signed by our Captain. Deck 4, Forward.

"TAX FREE SHOPPING? YES, PLEASE!"

That's right! Do all of your tax and duty free shopping right on board by visiting Sea Treasures, Mickey's Mainsail and Whitecaps. Deck 4, Midship.

SILENT ART AUCTION

Original inkings, line art, lithographs or will it be prints? Make sure you stop by the art gallery to see which pieces are up for silent auction today! The silent auction will take place from 11:00 a.m. to 2:00 p.m. Art Gallery, Deck 4, Midship.

PRECIOUS DISNEY PLUSHES

Cuddle up with some of your favorite Disney pals when you swing by Mickey's Mainsail and pick up one of your own soft Plush. From Stitch and Agent Perry to Minnie and Mickey, you'll be sure to find a new cuddly friend to take home. Deck 4, Midship.

OFFICER PIN TRADING

Come and trade pins with the officers of the Disney Magic at 7:15 p.m. in Preludes, Deck 4, Forward.

IMPORTANT INFORMATION

Security Notice

All Guests (including Children) who wish to disembark or embark the ship are required to present their Key to the World card at the gangway. A photo ID is also required for those Guests who are 18 years of age or older. Guests under the age of 18 are required to have a parent, guardian or other responsible adult sign an authorization form at the Guest Service Desk if they wish to go ashore unaccompanied or with any adult from another stateroom.

Cold and Flu Reminder

Please wash hands frequently and thoroughly, particularly before meals. Contact the Health Center by dialing 7-1923, should anyone in your party become ill.

Inclement Weather

For the safety of all Guests, outdoor events may be changed due to unforeseen weather conditions.

Corridor Quiet Hours

As a courtesy to all our Guests, please recognize quiet hallway hours from 10:00 p.m. til 8:00 a.m.

Environmental Message

With Disney's commitment to the Environment please refrain from throwing anything over the Ship's side. Thank you.

No Reserved Seats Policy

As a courtesy to all Guests we kindly advise that the saving of seats is not permitted in the Walt Disney Theatre, and the saving of the sun loungers is not permitted on Deck 9 and 10. Items left unattended will be returned to lost and found at Guest Services, Deck 3, Midship.

Smoking

For the comfort of our guests, the following areas are designated as smoking areas:
• Deck 10 forward, Starboard side
• Deck 9, forward, Starboard side at Quiet Cove
• Deck 4, aft, port side from 6:00 p.m. to 6:00 a.m. only (all of Deck 4 is non-smoking from 6:00 a.m. to 6:00 p.m.)
Smoking is prohibited inside all guest staterooms and on stateroom verandahs. Guests found smoking in their staterooms or on their verandahs will be charged a \$250 stateroom recovery fee

Sunscreen Advisory

Don't forget to apply sunscreen and insect repellent when going ashore.

Walt Disney Theatre

Theatrical performances may use artificial fog, strobe lights, pyrotechnics and other special effects. For the safety of our performers and the comfort of those around you, the use of any photography or video recording device or any electronic equipment is prohibited.

Verandah Safety

Please do not leave any combustible materials on your balcony when not present in your stateroom for safety reasons.

Morning	8:30	8:45	9:00	9:15	9:30	9:45	10:00	10:15	10:30	10:45	11:00	11:15	11:30	11:45	12:00	12:15	12:30	12:45	1:00	1:15	1:30																				
FUNNEL VISION	A Bug's Life (G) Funnel Vision							Brave (PG) Funnel Vision							Fun in the Sun Funnel Vision			Poolside Jams with Club DJ Rashaun Funnel Vision																							
BUENA VISTA THEATRE	Frozen (PG) Duration: 1 Hour 48 Minutes							Saving Mr. Banks (PG-13)							Frozen (PG)			Duration: 1 Hour 48 Minutes																							
CHARACTER	Princess Gathering Lobby Atrium			Minnie Preludes		Cpt. Hook Dk 4, Mid		Stitch Dk 4, Mid		Cpt. Hook Dk 4, Mid		Peter Pan Dk 4, Mid																													
FUN FOR ALL AGES			Disney Trivia Promenade Lounge		Disney Animation: Goofy Animator's Palate		Bingo Pre Sales		\$10,000 Mega Jackpot Bingo 						Captain's Signing Whitcaps		Poolside Jams with Club DJ Rashaun Deck Stage																								
ADULTS	Friends of Bill W. Animator's Palate		Body Sculpt Boot Camp Senses Spa Fitness Centre		50's & 60's O'Gills Pub				Crafts: Door Hangers Promenade Lounge		Crafts: 3D Crafts Promenade Lounge		Cruisin' for Trivia Promenade Lounge		Disney Vacation Club Group Preview D Lounge		Club 18*21 - Lunch Lumiere's		Pub Quiz O'Gills Pub		80's Music Trivia O'Gills Pub																				
VIBE	14-17 YEARS OLD							Youth Activities Open House							GOTCHA			Animation Cells			Zombified																				
EDGE	11-14 YEARS OLD							Youth Activities Open House							Mind Boggles																										
OCEANEER LAB	3-12 YEARS OLD							Goofy Files							Super Sloppy Science							Oceaneer Rangers			Lunch																
OCEANEER CLUB	3-12 YEARS OLD							Youth Activities Open House							Stitch's Great Adventure							Aladdin's Fun Adventures			Lunch																
Afternoon	1:45	2:00	2:15	2:30	2:45	3:00	3:15	3:30	3:45	4:00	4:15	4:30	4:45	5:00	5:15	5:30	5:45	6:00	6:15	6:30	6:45																				
FUNNEL VISION	Tangled (PG) Funnel Vision							Pixar Short Films (G) Funnel Vision							Cars (G) Funnel Vision																										
BUENA VISTA THEATRE	Frozen (PG)							Saving Mr. Banks (PG-13) Duration: 2 Hours 5 Minutes							Frozen (PG) Duration: 1 Hour 48 Minutes																										
CHARACTER	Pluto Gazebos, Dk 9			Daisy Gazebos, Dk 9			Goofy Gazebos, Dk 9			Goofy Dk 4, Mid			Minnie Dk 4, Mid																												
FUN FOR ALL AGES	Disney Tunes Trivia Promenade Lounge		Crafts: Tote Bags Promenade Lounge		Bingo Pre Sales		Final Jackpot Bingo 		Basketball Free Throw Wide World Of Sports Deck				Playhouse D Lounge D Lounge																												
ADULTS	Disney Animation Animator's Palate		ESPN Dream Team Draft Day - Baseball O'Gills Pub		Know It all Trivia O'Gills Pub		Group Cycling Senses Spa & Salon		Singles' Mingle Cove Cafe		Club 18*21: Game Challenge O'Gills Pub		Pub Quiz O'Gills Pub																												
VIBE	14-17 YEARS OLD							Zombified							Ice Cream Social			Dive into DJ'ing			Scavenger Hunt			ESPN Dream Team Draft Day																	
EDGE	11-14 YEARS OLD							Animation Cells							Ice Cream Social			Scavenger Hunt			Gender Wars			Youth Activities Open House																	
OCEANEER LAB	3-12 YEARS OLD							Youth Activities Open House							Piston Cup Challenge							Friendship Rocks Prep			Friendship Rocks			Dinner													
OCEANEER CLUB	3-12 YEARS OLD							The Royal Ball							Friendship Rocks Prep							Friendship Rocks			Memory Wall			Dinner													
Evening	7:00	7:15	7:30	7:45	8:00	8:15	8:30	8:45	9:00	9:15	9:30	9:45	10:00	10:15	10:30	10:45	11:00	11:15	11:30	11:45	12:00																				
FUNNEL VISION	The Muppets (PG) Funnel Vision							Oz The Great and Powerful (PG) Funnel Vision							Saving Mr. Banks (PG-13) Duration: 2 Hours 5 Minutes																										
BUENA VISTA THEATRE	Frozen (PG) Duration: 1 Hour 48 Minutes																																								
CHARACTER	Goofy Dk 4, Mid			Mickey Deck 4, Mid			Minnie Dk 4, Mid																																		
FUN FOR ALL AGES	Officer Pin Trading Preludes																																								
ADULTS	Ultimate Disney Trivia O'Gills Pub		Live Music with Carlos & Maria Keys		Live Music with Carlos & Maria Keys		Live Music with David Kenny O'Gills Pub		Pop! Fathoms		Tribute to Frank Sinatra Keys		Club 18*21: Mixer O'Gills Pub		Variety: Max Winfrey Fathoms				Club DJ Rashaun Fathoms																						
VIBE	14-17 YEARS OLD							Youth Activities Open House							Smoothie Hour			Pump It Up			Zombified Premiere			Final Farewell Slideshow																	
EDGE	11-14 YEARS OLD							Sports Deck Fun							That's Hilarious			Talent Show			How Well Do You Know Your Counselor?			Final Farewell Slideshow																	
OCEANEER LAB	3-12 YEARS OLD							Monstropolis Most Wanted							Animation Cells							Super Sloppy Science																			
OCEANEER CLUB	3-12 YEARS OLD							Marvel Avengers Academy							Dance Party																										

Symbol for activities that will be repeated during the cruise

FOLD

Fold along the dotted lines and take me with you so you don't miss any of the fun!

FOLD

IN THE SPOTLIGHT SERIES
SOLVE IT! SERIES
JUMP UP! SERIES
CREATE & INVENT SERIES
OPEN HOUSE
CLUBHOUSE SERIES
STORYBOOK SERIES

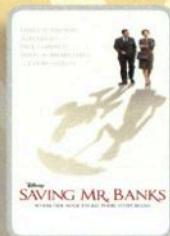
THURSDAY, JANUARY 9, 2014 - DAY AT SEA

BUENA VISTA THEATRE

DOLBY 3D



8:00 a.m., 5:30 p.m. &
8:00 p.m.
Duration: 1 hr 48 mins
Rating: PG



10:15 a.m. **PG**
3:00 p.m. & 10:45 p.m.
Duration: 2 hrs 5 mins
Rating: PG-13



12:45 p.m.
Duration: 1 hr 48 mins
Rating: PG

Character Appearances

PRINCESS GATHERING
Lobby Atrium - 9:00 a.m.

PRINCESS MINNIE
Preludes
9:30 a.m. & 10:45 a.m.

CAPTAIN HOOK
Deck 4, Midship
9:30 a.m. & 10:30 a.m.

STITCH
Deck 4, Midship - 10:00 a.m.

PETER PAN
Deck 4, Midship - 11:00 a.m.

CHARACTER DANCE PARTY
Lobby Atrium - 1:00 p.m.

PLUTO
Gazebo, Dk 9 - 2:30 p.m.

CHIP & DALE
Gazebo, Dk 9 - 3:00 p.m.

DAISY DUCK
Gazebo, Dk 9 - 3:30 p.m.

DONALD DUCK
Deck 4, Midship - 4:30 p.m.

GOOFY
Gazebo, Dk 9 - 4:00 p.m.
Deck 4, Midship
5:00 p.m. & 7:15 p.m.

MICKY MOUSE
Deck 4, Midship
5:30 p.m. & 7:45 p.m.

MINNIE MOUSE
Deck 4, Midship
6:00 p.m. & 8:15 p.m.

TIL WE MEET AGAIN
Lobby Atrium - 10:00 p.m.

Don't forget your Camera to capture those Magical Moments!

Check here each day for Character appearances.

For detailed Character appearance information see the Character Information Board in the Lobby Atrium.

Meet-and-Greets will be advertised for the length of time the line will be open. To avoid disappointment, please meet at start time of appearances.

YOUTH ACTIVITIES THEMED EXPERIENCES

CLUBHOUSE SERIES
focuses on movement and features content which appeals to younger children.

STORYBOOK SERIES
is designed with a strong connection to the Disney classic stories.

JUMP UP! SERIES
includes large group games & movement-oriented activities.

CREATE & INVENT SERIES
will have a tactile focus allowing children to create and admire their work.

YOUTH ACTIVITIES OPEN HOUSE

Activities for families, adults and children of all ages to enjoy together.

IN THE SPOTLIGHT SERIES
focuses on children's stage presence with lots of activities and enthusiasm.

SOLVE IT! SERIES
are less active, but will challenge children with problem/solutions-based activities.

SHIP DIRECTORY

YOUTH ACTIVITIES

DISNEY'S OCEANEER CLUB	DECK 5, MID	9:00 AM - 12:00 MID
DISNEY'S OCEANEER LAB	DECK 5, MID	9:00 AM - 12:00 MID
EDGE	DECK 2, MID	10:00 AM - 12:00 MID
IT'S A SMALL WORLD NURSERY	DECK 5, AFT	8:00 AM - 11:00 PM
VIBE	DECK 11, MID	10:00 AM - 1:00 PM

POOLS

*Children under 12 years of age must have adult supervision in all pools.

AQUADUNK	DECK 10, MID	10:00 AM - 9:00 PM
AQUALAB	DECK 9, AFT	9:00 AM - 9:00 PM
GOOFY'S POOL	DECK 9, MID	9:00 AM - 6:00 PM
		8:00 PM - 10:00 PM
NEPHEW'S SPLASH ZONE	DECK 9, AFT	9:00 AM - 6:00 PM
QUIET COVE POOL	DECK 9, FWD	6:00 AM - 12:00 MID
TWIST 'N' SPOUT	DECK 9, AFT	10:00 AM - 9:00 PM

RECREATION

PORT ADVENTURES DESK	DECK 3, MID	7:00 PM - 8:30 PM
SENSES FITNESS CENTER	DECK 9, FWD	6:30 AM - 10:00 PM
WIDE WORLD OF SPORTS DECK	DECK 10, FWD	24 HOURS

GENERAL INFORMATION

BUENA VISTA THEATRE	DECK 5, AFT	SHOWTIMES
DISNEY VACATION CLUB DESK	DECK 4, MID	9:00 AM - 11:00 AM
		1:30 PM - 10:00 PM
FUTURE CRUISE SALES DESK	DECK 4, MID	9:30 AM - 10:45 AM
		11:15 AM - 12:00 PM
		3:00 PM - 6:00 PM
		7:30 PM - 10:30 PM
FUNNEL VISION	DECK 9, MID	SHOWTIMES
GUEST SERVICES	DECK 3, MID	24 HOURS
HAIR BRAIDING	DECK 9, MID	
MEDICAL HEALTH CENTER	DECK 1, FWD	9:30 AM - 11:00 AM
		4:30 PM - 7:00 PM
PORT & SHOPPING DESK	DECK 3, MID	7:30 PM - 8:30 PM
PRELUDES	DECK 4, FWD	5:30 PM - 8:30 PM
QUARTER MASTERS (ARCADE)	DECK 9, MID	24 HOURS
SENSES SPA AND SALON	DECK 9, FWD	8:00 AM - 10:00 PM
SHUTTERS PHOTO GALLERY	DECK 4, AFT	10:00 AM - 11:00 PM
WALT DISNEY THEATRE	DECK 4, FWD	SHOWTIMES

SHOPPING

MICKY'S MAINSAIL	DECK 4, FWD	9:30 AM - 11:00 PM
QUACKS	DECK 9, MID	10:00 AM - 4:00 PM
SEA TREASURES	DECK 3, FWD	12:00 PM - 11:00 PM
VISTA GALLERY	DECK 4, MID	11:00 AM - 2:00 PM
		4:00 PM - 10:00 PM
WHITECAPS	DECK 4, FWD	9:30 AM - 11:00 PM

IMPORTANT NUMBERS

Fire/Security: 7-3001
Medical EMERGENCY: 7-3000
Health Center: 7-1923

DINNER MENU	Animator's Palate: Show Dinner	DRINK OF THE DAY	Mojito (Alcoholic)	WEATHER FORECAST	Thursday: Partly Cloudy High: 77°F/25°C
	Carrioca's: South American Dinner		No-Jito (Non Alcoholic)		Friday: Partly Cloudy High: 77°F/25°C
	Lumiére's: French Dinner				
Dining Times: 5:45pm & 8:15pm					
Evening Attire: Cruise Casual					

DINING & LOUNGES

BREAKFAST

CABANAS	DECK 9, AFT	7:30 AM - 11:30 AM
DAISY'S DE-LITES	DECK 9, AFT	7:00 AM - 9:00 AM
LUMIÈRE'S (Brunch)	DECK 3, MID	9:00 AM - 1:00 PM

LUNCH

CABANAS	DECK 9, AFT	11:30 AM - 3:00 PM
DAISY'S DE-LITES	DECK 9, AFT	11:00 AM - 6:00 PM
LUMIÈRE'S (Brunch)	DECK 3, MID	9:00 AM - 1:00 PM
PETE'S BOILER BITES	DECK 9, AFT	11:00 AM - 6:00 PM
PINOCCHIO'S PIZZERIA	DECK 9, MID	11:00 AM - 6:00 PM

DINNER

ANIMATOR'S PALATE	DECK 4, AFT	5:45 PM & 8:15 PM
CARIOCA'S	DECK 3, AFT	5:45 PM & 8:15 PM
LUMIÈRE'S	DECK 3, MID	5:45 PM & 8:15 PM
PALO (FOR RESERVATIONS CALL 7-6843)	DECK 10, AFT	6:00 PM - 8:30 PM
PETE'S BOILER BITES	DECK 9, AFT	6:00 PM - 10:00 PM

LATE NIGHT SNACKS

O'GILLS PUB	DECK 3, FWD	10:45 PM - 11:45 PM
PINOCCHIO'S PIZZERIA	DECK 9, MID	9:30 PM - 12:00 MID
PROMENADE LOUNGE	DECK 3, AFT	10:45 PM - 11:45 PM

ADDED FEATURES

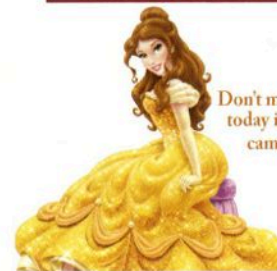
EYE SCREAM	DECK 9, AFT	11:00 AM - 11:00 PM
FROZONE TREATS	DECK 9, AFT	10:30 AM - 8:00 PM
BEVERAGE STATION	DECK 9, AFT	24 HOURS
ROOM SERVICE	DIAL 7-4330	CLOSES AT 1:00 A.M.

ENTERTAINMENT - LOUNGES - BARS

Adults must be 21 and older to consume alcoholic beverages.

AFTER HOURS	DECK 3, FWD	(AFTER 9:30 P.M. ADULTS ONLY)
COVE CAFE (18+)	DECK 9, MID	7:00 AM - 12:00 MID
FATHOMS (18+)	DECK 3, FWD	7:00 PM - 2:00 AM
INTERNET CAFE	DECK 3, AFT	24 HOURS
KEYS (18+)	DECK 3, FWD	5:30 PM - 12:30 PM
O'GILLS PUB (18+)	DECK 3, FWD	12:00 PM - 12:30 PM
PRELUDES	DECK 4, FWD	5:30 PM - 8:30 PM
PROMENADE LOUNGE	DECK 3, AFT	9:00 AM - 12:00 MID
PINOCCHIO'S PIZZERIA	DECK 9, MID	9:30 AM - 12:00 MID
SIGNALS (18+)	DECK 9, FWD	10:00 AM - 10:00 PM
D LOUNGE	DECK 4, MID	SHOWTIMES

Public Health Advisory: Consuming raw or undercooked meats, poultry, seafood, shellfish, or eggs may increase your risk for foodborne illness, especially if you have certain medical condition.



PRINCESS GATHERING

Don't miss your chance to see this Royal gathering today in the Lobby Atrium and don't forget your camera to capture those magical moments.

9:00 a.m.