

PERSONAL NAVIGATOR

SUNDAY, JANUARY 19, 2014

Sunrise: 6:59 a.m. Sunset: 5:44 p.m.

Evening Attire: Cruise Casual

All Ashore: 8:30 a.m.

All Aboard: 5:00 p.m.

Sunday: Sunny High: 70°F/21°C

Monday: Sunny High: 69°F/20°C

DISNEY'S CASTAWAY CAY



Disney DREAMS

AN ENCHANTED CLASSIC

In this spectacular fantasy, a little girl discovers the power of her dreams.

Fly through the air with Peter Pan and your imagination, as many Classic Disney Characters spring to life. With a little Faith, Trust and Pixie Dust you'll see that your dreams can come true!

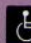
WALT DISNEY THEATRE

Deck 4, Forward

6:15 p.m. & 8:30 p.m.



As a courtesy to all Guests, we kindly advise that the saving of seats is **not** permitted in the Walt Disney Theatre.

 Assistance available at the entrance to the Walt Disney Theatre 30 minutes prior to show time.

Disney's Castaway Cay

Reserved exclusively for Guests on Disney Cruise Line Bahamian and Caribbean cruise vacations, Castaway Cay is Disney's private port-of-call paradise. On this island, enjoy tropical leisure activities, such as snorkeling, boating, swimming and sunbathing.

Friendly Reminders

Serenity Bay is reserved for Guests 18 and older.

Your Key To The World Card will need to be used for all transactions on Disney's Castaway Cay except for the Post Office.

A limited number of all-terrain wheelchairs are available across from Scuttle's Cove.

For your convenience, beach towels are available as you leave the ship; please return them at the gangway at the end of your day.

Due to our commitment to the environment, we ask that seashells, coral and other natural treasures be left undisturbed at Disney's Castaway Cay for all to enjoy.

TIL WE MEET AGAIN

FAREWELL SHOW

The world-famous Disney Characters and some of your new friends from the Disney Magic stage shows bid you a charming farewell.

Lobby Atrium,
Deck 3, Midship,
10:00 p.m.

Don't Miss:

runDisney: Castaway Cay 5K (12+)

D Lounge, Deck 4, Midship - 8:00 a.m.

Runners (12+) meet at 8:15 a.m. We will depart the ship at 8:30 a.m., and make our way to the Bike Rentals where the run will begin.

Island Power Walk

Meet on the pier by the showers, Disney's Castaway Cay - 9:30 a.m.

Join us for a brisk walk around the island. Meet on the pier by the showers, the walk will depart at 9:45 a.m.

Crab Races

Island Gazebo 1, Disney's Castaway Cay - 11:45 a.m.

Island Gazebo 2, Disney's Castaway Cay - 12:45 p.m.

Watch some local sea creatures make a break for the finish line.

80's Flashback (18+)

Fathoms, Deck 3, Forward - 11:00 p.m.

The 80's are back! Join your Cruise Staff team, in testing your 80's knowledge in this high energy 80's revival.

Debark Talk Broadcast

Important information regarding disembarkation procedures for Miami and your journey home will be covered in this debarkation briefing. The broadcast will be shown continuously on channel 24-2 of your stateroom television for your convenience.

Thank you in advance for completing your comment card.

DINNER MENU

Animator's Palate: Show Dinner
Carioca's: South American Dinner
Lumiére's: French Dinner

DRINK OF THE DAY

Stingray (Alcoholic)
Lava Smoothie (Non Alcoholic)

IMPORTANT NUMBERS

Fire/Security: 7-3001
Medical Emergency: 7-3000
Health Center: 7-1923

FUN FOR ALL AGES HIGHLIGHTS

RUNDISNEY: CASTAWAY CAY 5K (12+)

D Lounge, Deck 4, Midship - 8:00 a.m.

Runners (12+) meet at 8:15 a.m. We will depart the ship at 8:30 a.m., and make our way to the Bike Rentals where the run will begin.



FAMILY WHALE DIG

Monstro Point, Disney's Castaway Cay - 1:00 p.m.

Our island paleontologist leads us in the excavation of a giant whale skeleton and other fossilized treasures! Make no bones about it, this is an adventure every beachcomber is sure to dig!

ANIMATION - DONALD DUCK

Promenade Lounge, Deck 3, Aft - 4:00 p.m.

Your Cruise Staff teach you how to draw one of your favorite Disney friends - Donald Duck.

PLAYHOUSE FUN

Promenade Lounge, Deck 3, Aft - 4:45 p.m.

Calling our youngest of cruisers! Here is a special playtime that is just for you. Come meet new friends; and join in on the fun as your Cruise Staff team takes you through interactive activities made just for you!

OFFICER PIN TRADING

Preludes, Deck 4, Forward - 7:15 p.m.

Come trade pins with the officers of the Disney Magic.

WHO WANTS TO BE A MOUSEKETEER?

D Lounge, Deck 4, Midship - 7:30 p.m.

Your chance to get in to the "hot seat" and win limited edition prizes. Or, play along as part of our live studio audience.



FAREWELL KARAOKE

D Lounge, Deck 4, Midship - 10:30 p.m.

Bring along the entire family for one more round of karaoke. This is your last opportunity to grab the mic and sing along to your favorite song.

ADULT ACTIVITY HIGHLIGHTS



SENSES SPA FITNESS CLASSES & SEMINARS

Sunrise Stretch - Senses Spa Fitness Center - 7:30 a.m.

Body Sculpt Boot Camp - Senses Spa Fitness Center - 8:00 a.m.

Yoga on the Beach - Serenity Bay - 11:00 a.m.

TASTING CLASSES

Mixology (21+) - Keys - 2:30 p.m.

Cognac Tasting (21+) - Cove Cafe - 10:30 p.m.

Please make reservations for tastings at Guest Services for a nominal fee.

Tasting Seminars are only for Guests 21 and Older.

CLUB
18*21

CLUB 18*21 - BASKETBALL FREE THROW

In Da Shade Game Pavilion, Disney's Castaway Cay - 2:00 p.m.

CLUB 18*21 - MIXER

O'Gills Pub, Deck 3, Forward - 10:00 p.m.

ART OF THE THEME SHOW TOUR

Meet at Palo, Deck 10, Aft - 4:30 p.m.

Join us on a guided ship tour and discover the key ingredients that make the Disney Magic.

LIVE PIANO WITH CLARA OMAN

Keys, Deck 3, Forward - 7:30 p.m., 9:30 p.m., 10:30 p.m. & 11:30 p.m.

Join Clara Oman as she plays piano live for your listening pleasure.

POP!

Fathoms, Deck 3, Forward - 10:30 p.m.

Have you been told you are full of useless information about pop culture? If the answer is "Yes", then you have what it takes to play the high energy game show all about the world of Pop!



80'S FLASHBACK

Fathoms, Deck 3, Forward - 11:00 p.m.

The 80's are back! Join your Cruise Staff team, in testing your 80's knowledge in this high energy 80's revival.



\$10,000 FINAL MEGA JACKPOT BINGO

Fathoms, Deck 3, Forward
Card Sales - 4:00 p.m.
Game Starts - 4:30 pm

It's Big, it's Massive, it's Supersized! It's \$10,000 MEGA Jackpot Bingo! Take home \$10,000 if you can cover your card in 46 numbers or less. If not, we carry on to play for the biggest cash prize of the session! Plus, the Snowball Jackpot must be won at this final game of bingo!

YOUTH ACTIVITIES HIGHLIGHTS

DINE & PLAY

A convenience for families dining at 8:15 p.m., our Youth Activities Counselors will be available at 9:15 p.m. at the entrance of Lumière's, Carioca's and Animator's Palate dining rooms to bring registered children to join the fun in Disney's Oceaneer Club and Disney's Oceaneer Lab.



Deck 5, Aft (7-5864) 8:30 a.m. - 11:00 p.m.

Infants and Toddlers can enjoy toys and activities at It's a Small World Nursery. Reservations are first come, first served so please stop by!



Deck 5, Midship (7-1440) 3:00 p.m. - 12:00 mid
(3-12 years old)

THE ROYAL BALL

3:15 p.m.

Attend your own Royal Ball and learn to be a prince or a princess.

ONCE UPON A TIME

4:15 p.m.

Join Beverly the Bookmaker for a magical, musical story time featuring a Disney Princess!



Deck 5, Midship (7-1445) 9:00 a.m. - 12:00 mid
(3-12 years old)

OCEANEER RANGERS

3:15 p.m.

Put your teamwork to the test in this challenge.

PISTON CUP CHALLENGE

4:30 p.m.

It's Dinoco time and you're part of the pit crew! Design your own race car and see if you've got what it takes to end up in the Winner's Circle!



Deck 2, Midship (7-5816) 4:00 p.m. - 12:00 mid
(11-14 years old)

LUNCH AT COOKIES TOO

12:30 p.m.

Join us for lunch at Cookies Too

HOW WELL DO YOU KNOW YOUR COUNSELOR?

10:00 p.m.

Do you think you know all there is to know about your counselors? Come test out your knowledge with all of your friends!



Deck 11, Midship (7-18517) 4:00 p.m. - 1:00 a.m.
(14-17 years old)

PUMP IT UP

9:00 p.m.

Join us in the Fitness Center for a Teen Only workout. Meet in Vibe to join in!

SMOOTHIE HOUR

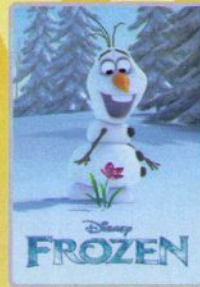
10:00 p.m.

Join us for Smoothies

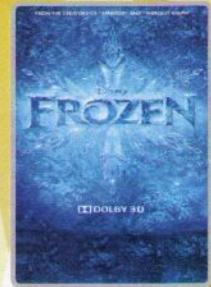
BUENA VISTA THEATRE

Today's Movies

DOLBY 3D

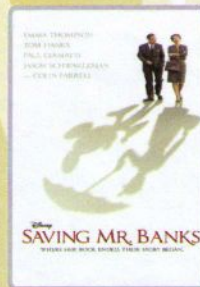


8:30 a.m.
Duration: 1 hr 48 mins
Rating: PG

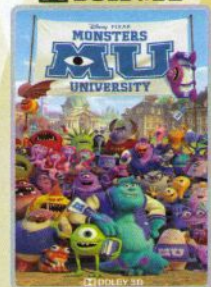


10:45 a.m. & 3:30 p.m.
Duration: 1 hr 48 mins
Rating: PG

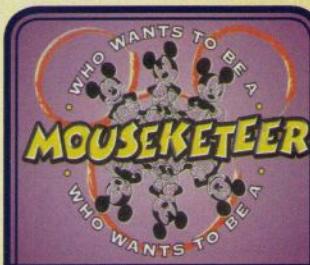
DOLBY 3D



1:00 p.m. & 10:30 p.m.
Duration: 2 hrs 5 mins
Rating: PG-13



5:45 p.m. & 8:15 p.m.
Duration: 1 hr 43 mins
Rating: G



Your chance to get into the world famous hot seat and win an exclusive prize in our version of the well known television game show.

**D Lounge,
Deck 4, Midship,
7:30 p.m.**



THEME NIGHT

THE 80'S ARE BACK!
Join your Cruise Staff team, in testing your 80's knowledge in this high energy 80's revival.

**Fathoms (18+),
Deck 3, Forward,
11:00 p.m.**

YOUTH ACTIVITIES OPEN HOUSE

Open House is an opportunity for all to come and participate in a variety of exciting activities and free time in the Oceaneer Club, Oceaneer Lab, Edge, Vibe, and It's a Small World Nursery throughout the cruise. During these times secured programming will still be offered in the other venues for those looking to check their children into care.

Vibe: 4:00 p.m. - 5:30 p.m.
Edge: 6:00 p.m. - 7:30 p.m.

Disney's Oceaneer Lab: 9:00 a.m. - 3:00 p.m.
Disney's Oceaneer Club: 3:00 p.m. - 6:00 p.m.

MORE TO ENJOY WHILE ONBOARD

PLAN YOUR NEXT GETAWAY NOW

Our 3 and 4 night Bahamian Cruises are a perfect way to get an instant tropical recharge! Departing from Miami or Port Canaveral, most Bahamian cruises include a stop at Disney's private island, Castaway Cay. Visit the Future Cruise Sales Desk today and ask about our special onboard booking offer.

DISNEY VACATION CLUB

Visit the Disney Vacation Club information desk and ask us about show times where you will learn how to turn every vacation into the vacation of a lifetime.

EXPRESS CHECK OUT

If you have a credit card on file, you qualify for express check out. No need to visit Guest Services to settle your account.

EXPRESS WALK OFF

This option allows you to take your luggage off the ship at your leisure once the ship has been cleared by the local authorities. You won't need to wait for your luggage to enter the terminal and there is no need to claim it inside the terminal building. Please note that no assistance with luggage is provided for this option.



Welcome to Disney's Island Paradise Castaway Cay.

Today is the day to relax in an inner tube, snorkel in the Caribbean blue, get up-close and personal to real life stingrays or fly high in the sky on a parasail excursion during a breathtaking aerial adventure.

Visit Marge's Barges or one of the rental locations and our friendly team will assist in making any last minute bookings.

PORT ADVENTURES MEETING TIMES AND LOCATIONS

as per ticket	Castaway Ray's Stingray Adventure	Gil's Fins and Boats
as per ticket	Parasailing	Marge's Barges
as per ticket	Glass Bottom Boat	Marge's Barges
as per ticket	The Wild Side Teen Adventure	Vibe (on ship)
as per ticket	Seahorse Catamaran Snorkel Adventures	Marge's Barges
as per ticket	Nature Walk and Kayaking	Marge's Barges
as per ticket	Castaway Cay Bottom Fishing	Marge's Barges
as per ticket	Abaco Backcountry Fishing Adventure	Marge's Barges

CASTAWAY CAY ISLAND RENTALS

Rentals will be open until 3:30 p.m.

Bicycles	Upon Arrival	Bicycle Rental
Boats	Upon Arrival	Boat Beach
Float	Upon Arrival	Gil's Fins and Boats/Flippers and Floats
Getaway Package	Upon Arrival	Gil's Fins and Boats/Flippers and Floats
Snorkeling Gear	Upon Arrival	Gil's Fins and Boats/Flippers and Floats

Based on availability, reservations can be made on the island at each rental location.

Waivers: Please have your waivers signed before arriving to the departure location.



Deck 9, Forward - Phone : 7-1465

SALON TASTER SPECIAL

Choose from any of the following:

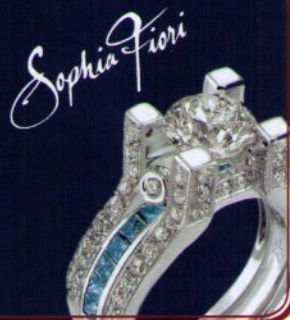
Scalp Massage ~ European Facial ~ Hand Treatment
Sunglow Makeover ~ Conditioning Hair Treatment ~ Eye Collagen Facial
Foot and Ankle Massage ~ Neck and Shoulder Massage
Choose Three for \$99, Five for \$119 and all Eight for \$139

SOPHIA FIORI

Industry leaders in vivid colored diamonds, and more specifically Caribbean blue diamonds - one of the single most popular purchases at sea because it reminds everyone of the colors of the Breathtaking Ocean!

WHITECAPS

Deck 4, Forward



GET THE PICTURE!

Your professional cruise photos all inclusive packages*

Unlimited digital files or unlimited prints - \$229.95

Unlimited digital files plus unlimited prints - \$279.95

*offer available per stateroom; terms and conditions apply.

SHOPPING

OFFICER PIN TRADING

Pick up some Disney Cruise Line® pins when you stop by Mickey's Mainsail, Deck 4, Forward. Later, join the Officers of the Disney Magic for pin trading fun at 7:15 PM in Preludes, Deck 4, Forward.

ROMERO BRITTO ART AT THE VISTA GALLERY

Stop by the Vista Gallery to view original artwork by popular artists such as Romero Britto. Britto's whimsical and colorful pieces feature some of your favorite Disney characters in a style that only Britto can create. Deck 4, Midship.

2014 DISNEY CRUISE LINE MERCHANDISE

Step into Mickey's Mainsail today and commemorate your Disney cruise with a wide selection of 2014 Disney Cruise Line merchandise. From t-shirts to photo albums and more, you are sure to find a special souvenir for the whole family. Deck 4, Forward.

GREAT OFFERS WHEN YOU SHOP ONBOARD

Stop by Whitecaps, Deck 4 Forward, and receive a Chamilia Ship Charm for \$30.00 with any merchandise purchase of \$40.00 or more. While supplies last. Offer not valid on previous purchases. Offer subject to change without notice.

HELPFUL SHOPPING TIP FOR CASTAWAY CAY

Avoid getting sand and water on your souvenirs by placing your newly purchased items from Castaway Cay on hold at She Sells Seashells and Everything Else and at Buy the Seashore. Your items will then be delivered to Whitecaps on Deck 4 for pick up.

SOPHIA FIORI LAST OPPORTUNITY

Drop in to Whitecaps for your last chance to get your hands on our fantastic collection of Sophia Fiori Couture diamond jewelry! Don't miss out on these exquisite diamonds. Deck 4, Forward.

Due to port regulations, when the ship is docked, the stores will remain closed.

IMPORTANT INFORMATION

Security Notice

All Guests (including Children) who wish to disembark or embark the ship are required to present their Key to the World card at the gangway. A photo ID is also required for those Guests who are 18 years of age or older. Guests under the age of 18 are required to have a parent, guardian or other responsible adult sign an authorization form at the Guest Service Desk if they wish to go ashore unaccompanied or with any adult from another stateroom.

Sunscreen/Insect Repellent Advisory

Please remember to use plenty of sunscreen and mosquito repellent when venturing ashore.

Cold and Flu Reminder

Please wash hands frequently and thoroughly, particularly before meals. Contact the Health Center by dialing 7-1923, should anyone in your party become ill.

Inclement Weather

For the safety of all Guests, outdoor events may be changed due to unforeseen weather conditions.

Corridor Quiet Hours

As a courtesy to all our Guests, please recognize quiet hallway hours from 10:00 p.m. til 8:00 a.m.

Environmental Message

With Disney's commitment to the Environment please refrain from throwing anything over the Ship's side. Thank you.

No Reserved Seats Policy

As a courtesy to all Guests we kindly advise that the saving of seats is not permitted in the Walt Disney Theatre, and the saving of the sun loungers is not permitted on Deck 9 and 10. Items left unattended will be returned to lost and found at Guest Services, Deck 3, Midship.

Smoking

For the comfort of our guests, the following areas are designated as smoking areas:

- Deck 10 forward, Starboard side
- Deck 9, forward, Starboard side at Quiet Cove
- Deck 4, aft, port side from 6:00 p.m. to 6:00 a.m. only (all of Deck 4 is non-smoking from 6:00 a.m. to 6:00 p.m.)

Smoking is prohibited inside all guest staterooms and on stateroom verandahs. Guests found smoking in their staterooms or on their verandahs will be charged a \$250 stateroom recovery fee

Sunscreen Advisory

Don't forget to apply sunscreen and insect repellent when going ashore.

Walt Disney Theatre

Theatrical performances may use artificial fog, strobe lights, pyrotechnics and other special effects. For the safety of our performers and the comfort of those around you, the use of any photography or video recording device or any electronic equipment is prohibited.

Verandah Safety

Please do not leave any combustible materials on your balcony when not present in your stateroom for safety reasons.

Morning	8:30	8:45	9:00	9:15	9:30	9:45	10:00	10:15	10:30	10:45	11:00	11:15	11:30	11:45	12:00	12:15	12:30	12:45	1:00	1:15	1:30	
FUNNEL VISION	Lilo and Stitch (G) Funnel Vision						Finding Nemo (G) Funnel Vision						Tinker Bell (G) Funnel Vision						The Little Mermaid (G) Funnel Vision			
BUENA VISTA THEATRE	Frozen (PG) Duration: 1 Hour 48 Minutes						Frozen (PG) Duration: 1 Hour 48 Minutes						Saving Mr. Banks (PG-13) Duration: 2 Hours 5 Minutes									
CHARACTER	Donald Post Office	Minnie Scuttles Cove			Mickey Scuttles Cove	Donald Post Office	Minnie Rustmore	Chip & Dale Post Office	Mickey Rustmore													
		Pluto Rustmore	Chip & Dale Post Office	Goofy Rustmore	Jack Sparrow Marge's Barges	Pluto Scuttles Cove		Goofy Scuttles Cove		Jack Sparrow Marge's Barges												
FUN FOR ALL AGES	D Lounge (12+) (Departs at 8:30 a.m.)						Island Power Walk Meet on the pier by the showers						Crab Races Island Gazebo 1		Crab Races Island Gazebo 2		Infusion Live Island Gazebo 1		Family Whale Dig Monstro Point			
ADULTS	Friends of Bill W. Animator's Palate						Yoga on the Beach Serenity Bay						Books and Magazines available in Cove Cafe									
VIBE 14-17 YEARS OLD	Meet At Teen Hideout						Lunch at Cookies Too															
EDGE 11-14 YEARS OLD	Meet At Marge's Barges						Meet At In Da Shade						Pelican Plunge						Lunch at Cookies Too		Meet At In Da Shade	
SCUTTLES COVE	Water Relays						Whale Dig						Whale Dig						Lunch at Pop's Props		Caribbean Beach Party	
OCEANEER LAB 3-12 YEARS OLD	Youth Activities Open House																					

Afternoon	1:45	2:00	2:15	2:30	2:45	3:00	3:15	3:30	3:45	4:00	4:15	4:30	4:45	5:00	5:15	5:30	5:45	6:00	6:15	6:30	6:45	
FUNNEL VISION	The Little Mermaid (G) Funnel Vision						NFL Football: New England vs. Denver Funnel Vision (Subject to satellite availability)						NFL Football Funnel Vision									
BUENA VISTA THEATRE	Saving Mr. Banks (PG-13) Duration: 2 Hours 5 Minutes						Frozen (PG) Duration: 1 Hour 48 Minutes						Monsters University (G) Duration: 1 Hour 43 Minutes									
CHARACTER		Pluto Gangway			Cpt. Hook Gangway			Stitch Gangway		Daisy Dk 4, Mid		Captain America Preludes		Minnie Dk 4, Mid								
			Stitch Gangway			Pluto Gangway		Cpt. Hook Gangway			Donald Dk 4, Mid				Mickey Dk 4, Mid							
FUN FOR ALL AGES	Board Games Available Promenade Lounge						Bingo Pre Sales						\$10,000 Final Mega Jackpot Fathoms		Live Music With Carlos and Maria Promenade Lounge		Walt Disney Theatre					
							Animation - Donald Promenade Lounge						Playhouse Fun Promenade Lounge		Live Music with Infusion Lobby Atrium							
ADULTS	Club 18*21 - Basketball Free Throw In Da Shade						NFL Football: New England vs. Denver O'Gills Pub (Subject to satellite availability)						Art of The Theme Show Tour Meet at Palo		Singles Mingle Cove Cafe		NFL Football: New England vs. Denver O'Gills Pub (Subject to satellite availability)		NFL Football O'Gills Pub			
	Mixology (21+) Keys (Nom. Fee Applies)						Disney Vacation Club Group Preview D Lounge								Joe Creamer Live Keys							
VIBE 14-17 YEARS OLD	Meet At Teen Hideout						Youth Activities Open House						Scavenger Hunt									
EDGE 11-14 YEARS OLD	Meet At In Da Shade						Meet At Teen Hideout						Youth Activities Open House									
SCUTTLES COVE	Capture the Flag						Scuttles Cove Closes at 3:00 p.m.															
OCEANEER LAB 3-12 YEARS OLD	Youth Activities Open House						Oceaneer Rangers						Piston Cup Challenge						Dinner			
OCEANEER CLUB 3-12 YEARS OLD	Youth Activities Open House						The Royal Ball						Once Upon a Time		Become Iron Man!				Dinner			

Evening	7:00	7:15	7:30	7:45	8:00	8:15	8:30	8:45	9:00	9:15	9:30	9:45	10:00	10:15	10:30	10:45	11:00	11:15	11:30	11:45	12:00			
FUNNEL VISION	NFL Football: San Francisco vs. Seattle Funnel Vision (Subject to satellite availability)						<Starts at 6:30 p.m.						Remember the Titans (PG) Funnel Vision											
BUENA VISTA THEATRE	Monsters University (G) Duration: 1 Hour 43 Minutes						Saving Mr. Banks (PG-13) Duration: 2 Hours 5 Minutes																	
CHARACTER		Tiana Dk 4, Mid				Mickey Dk 4, Mid																		
FUN FOR ALL AGES	Officer Pin Trading Preludes		Mouseketeer Fathoms		Walt Disney Theatre		Lobby Atrium		Farewell Karaoke D Lounge		Live Music With Carlos and Maria Promenade Lounge		Live Music With Carlos and Maria Promenade Lounge											
ADULTS	NFL Football: San Francisco vs. Seattle O'Gills Pub (Subject to satellite availability)						<Starts at 6:30 p.m.						Club 18*21 - Mixer O'Gills Pub		Fathoms		Fathoms		Cruise Staff DJ Fathoms		Live Piano with Clara Oman Keys			
	Live Piano With Clara Oman Keys						Live Piano With Joe Creamer Keys						Tribute to Frank Sinatra Keys											
VIBE 14-17 YEARS OLD	Sports Deck Fun						Teen Choice						Pump It Up						Smoothie Hour		Final Farewell		Mix and Match	
EDGE 11-14 YEARS OLD	Open House						Sports Deck Fun						Tween Choice						Talent Show		How Well Do You Know Your Counselor?		Final Farewell Slideshow	
OCEANEER LAB 3-12 YEARS OLD	Anyone Can Cook						Game Challenge						Super Sloppy Science											
OCEANEER CLUB 3-12 YEARS OLD	Marvel Avengers Academy						Dance Party																	

Symbol for activities that will be repeated during the cruise

FOLD

Fold along the dotted lines and take me with you so you don't miss any of the fun!

FOLD

IN THE SPOTLIGHT SERIES
SOLVE IT! SERIES
JUMP UP! SERIES
CREATE & INVENT SERIES
OPEN HOUSE
CLUBHOUSE SERIES
STORYBOOK SERIES

BUENA VISTA THEATRE

DOLBY 3D

DOLBY 3D



8:30 a.m. Duration: 1 hr 48 mins Rating: PG
 10:45 a.m. & 3:30 p.m. Duration: 1 hr 48 mins Rating: PG
 1:00 p.m. & 10:30 p.m. Duration: 2 hrs 5 mins Rating: PG-13
 5:45 p.m. & 8:15 p.m. Duration: 1 hr 43 mins Rating: G

Character Appearances

DONALD DUCK
Post Office
8:45 a.m. & 9:45 a.m.
Deck 4, Midship - 4:45 p.m.

PLUTO
Mt. Rustmore - 9:00 a.m.
Scuttle's Cove - 10:00 a.m.
Gangway
2:15 p.m. & 3:15 p.m.

MINNIE MOUSE
Scuttle's Cove - 9:00 a.m.
Mt. Rustmore - 10:00 a.m.
Deck 4, Midship
5:15 p.m. & 8:15 p.m.

CHIP & DALE
Post Office
- 9:15 a.m. & 10:15 a.m.

GOOFY
Mt. Rustmore - 9:30 a.m.
Scuttle's Cove - 10:30 a.m.

MICKEY MOUSE
Scuttle's Cove - 9:30 a.m.
Mt. Rustmore - 10:30 a.m.
Deck 4, Midship
5:45 p.m. & 7:45 p.m.

CAPTAIN JACK SPARROW
Marge's Barges
9:45 a.m. & 11:00 a.m.

STITCH
Gangway
2:30 p.m. & 3:30 p.m.

CAPTAIN HOOK
Gangway
2:45 p.m. & 3:45 p.m.

DAISY DUCK
Deck 4, Midship - 4:15 p.m.

CAPTAIN AMERICA
Preludes - 4:45 p.m.

PRINCESS TIANA
Deck 4, Midship - 7:15 p.m.

TIL WE MEET AGAIN
Lobby Atrium - 10:00 p.m.



Don't forget your Camera to capture those Magical Moments!
 Check here each day for Character appearances.
 For detailed Character appearance information, please see the Character Information Board in the Lobby Atrium.
 Meet-and-Greets will be advertised for the length of time the line will be open. To avoid disappointment, please meet at start time of appearances.

YOUTH ACTIVITIES THEMED EXPERIENCES

CLUBHOUSE SERIES
focuses on movement and features content which appeals to younger children.

JUMP UP! SERIES
includes large ground games & movement-oriented activities.

IN THE SPOTLIGHT SERIES
focuses on children's stage presence with lots of activities and enthusiasm.

STORYBOOK SERIES
is designed with a strong connection to the Disney classic stories.

CREATE & INVENT SERIES
will have a tactile focus allowing children to create and admire their work.

SOLVE IT! SERIES
are less active, but will challenge children with problem/solutions-based activities.

YOUTH ACTIVITIES OPEN HOUSE

Activities for families, adults and children of all ages to enjoy together.

SHIP DIRECTORY

YOUTH ACTIVITIES

DISNEY'S OCEANEER CLUB	DECK 5, MID	3:00 PM - 12:00 MID
DISNEY'S OCEANEER LAB	DECK 5, MID	9:00 AM - 12:00 MID
EDGE	DECK 2, MID	4:00 PM - 12:00 MID
IT'S A SMALL WORLD NURSERY	DECK 5, AFT	8:30 AM - 11:00 PM
SCUTTLES COVE	CASTAWAY CAY	8:45 AM - 3:00 PM
VIBE	DECK 11, MID	4:00 PM - 1:00 AM

POOLS

*Children under 12 years of age must have adult supervision in all pools.

AQUADUNK	DECK 10, MID	11:00 AM - 9:00 PM
AQUALAB	DECK 9, AFT	9:00 AM - 9:00 PM
GOOFY'S POOL	DECK 9, MID	9:00 AM - 6:00 PM 8:00 PM - 10:00 PM
NEPHEW'S SPLASH ZONE	DECK 9, AFT	9:00 AM - 6:00 PM
QUIET COVE POOL	DECK 9, FWD	6:00 AM - 12:00 MID
TWIST 'N' SPOUT	DECK 9, AFT	10:00 AM - 9:00 PM

RECREATION

SENSES FITNESS CENTER	DECK 9, FWD	6:30 AM - 10:00 PM
WIDE WORLD OF SPORTS DECK	DECK 10, FWD	24 HOURS

GENERAL INFORMATION

BUENA VISTA THEATRE	DECK 5, AFT	SHOWTIMES
DISNEY VACATION CLUB DESK	DECK 4, MID	9:00 AM - 11:00 AM 3:30 PM - 10:00 PM
FUTURE CRUISE SALES DESK	DECK 4, MID	8:30 AM - 9:30 AM 4:00 PM - 6:00 PM 7:30 PM - 10:30 PM
FUNNEL VISION	DECK 9, MID	SHOWTIMES
GUEST SERVICES	DECK 3, MID	24 HOURS
HAIR BRAIDING	DECK 9, MID	
MEDICAL HEALTH CENTER	DECK 1, FWD	9:00 AM - 11:00 AM 4:30 PM - 7:00 PM
PORT & SHOPPING DESK	DECK 3, MID	
PRELUDES	DECK 4, FWD	5:30 PM - 8:30 PM
QUARTER MASTERS (ARCADE)	DECK 9, MID	24 HOURS
SENSES SPA AND SALON	DECK 9, FWD	8:00 AM - 10:00 PM
SHUTTERS PHOTO GALLERY	DECK 4, AFT	5:00 PM - 11:00 PM
WALT DISNEY THEATRE	DECK 4, FWD	SHOWTIMES

SHOPPING

MICKEY'S MAINSAIL	DECK 4, FWD	5:30 PM - 11:00 PM
QUACKS	DECK 9, MID	
SEA TREASURES	DECK 3, FWD	7:00 PM - 11:00 PM
VISTA GALLERY	DECK 4, MID	7:00 PM - 11:00 PM
WHITECAPS	DECK 4, FWD	5:30 PM - 11:00 PM

IMPORTANT NUMBERS

Fire/Security: 7-3001
 Medical EMERGENCY: 7-3000
 Health Center: 7-1923

DINNER MENU	Animator's Palate: Show Dinner	DRINK OF THE DAY	Stringray (Alcoholic)	WEATHER FORECAST	Sunday: Sunny High: 70°F/21°C
	Carioca's: South American Dinner		Lava Smoothie (Non-Alcoholic)		Monday: Sunny High: 69°F/20°C
	Lumiére's: French Dinner				
Dining Times: 5:45pm & 8:15pm		Evening Attire: Cruise Casual			

DINING & LOUNGES

BREAKFAST

CABANAS	DECK 9, AFT	7:30 AM - 11:30 AM
DAISY'S DE-LITES	DECK 9, AFT	7:00 AM - 9:00 AM
LUMIÈRE'S (À-LA CARTE)	DECK 3, MID	8:00 AM - 9:30 AM

LUNCH

CABANAS	DECK 9, AFT	11:30 AM - 2:00 PM
COOKIES BBQ	CASTAWAY CAY	11:30 AM - 2:00 PM
COOKIES TOO BBQ	CASTAWAY CAY	11:30 AM - 2:00 PM
DAISY'S DE-LITES	DECK 9, AFT	11:00 AM - 6:00 PM
PETE'S BOILER BITES	DECK 9, AFT	11:00 AM - 6:00 PM
PINOCCHIO'S PIZZERIA	DECK 9, MID	11:00 AM - 6:00 PM
SERENITY BAY BBQ	CASTAWAY CAY	11:30 AM - 2:00 PM

DINNER

ANIMATOR'S PALATE	DECK 4, AFT	5:45 PM & 8:15 PM
CARIOCA'S	DECK 3, AFT	5:45 PM & 8:15 PM
LUMIÈRE'S	DECK 3, MID	5:45 PM & 8:15 PM
PALO (FOR RESERVATIONS CALL 7-8849)	DECK 10, AFT	6:00 PM - 8:30 PM
PETE'S BOILER BITES	DECK 9, AFT	6:00 PM - 10:00 PM

LATE NIGHT SNACKS

O'GILLS PUB	DECK 3, FWD	10:45 PM - 11:45 PM
PINOCCHIO'S PIZZERIA	DECK 9, MID	9:30 PM - 12:00 MID
PROMENADE LOUNGE	DECK 3, AFT	10:45 PM - 11:45 PM

ADDED FEATURES

EYE SCREAM	DECK 9, AFT	11:00 AM - 11:00 PM
FROZONE TREATS	DECK 9, AFT	3:00 PM - 8:00 PM
BEVERAGE STATION	DECK 9, AFT	24 HOURS
ROOM SERVICE	DIAL 7-4330	CLOSES AT 1:00 AM

ENTERTAINMENT - LOUNGES - BARS

Adults must be 21 and older to consume alcoholic beverages.

AFTER HOURS	DECK 3, FWD	(AFTER 9:00 PM. ADULTS ONLY)
COVE CAFE (18+)	DECK 9, MID	7:00 AM - 12:00 MID
CASTAWAY AIR BAR	CASTAWAY CAY	10:00 AM - 3:30 PM
CONCHED OUT BAR	CASTAWAY CAY	9:30 AM - 4:00 PM
FATHOMS (18+)	DECK 3, FWD	7:00 PM - 2:00 AM
INTERNET CAFE	DECK 3, AFT	24 HOURS
KEYS (18+)	DECK 3, FWD	5:30 PM - 12:00 MID
O'GILLS PUB (18+)	DECK 3, FWD	12:00 PM - 12:00 MID
PRELUDES	DECK 4, FWD	5:30 PM - 8:30 PM
PROMENADE LOUNGE	DECK 3, AFT	8:00 AM - 12:00 MID
PINOCCHIO'S PIZZERIA	DECK 9, MID	9:30 AM - 12:00 MID
SAND BAR	CASTAWAY CAY	9:30 AM - 3:30 PM
SIGNALS (18+)	DECK 9, FWD	12:00 PM - 10:30 PM
D LOUNGE	DECK 4, MID	SHOWTIMES

Public Health Advisory: Consuming raw or undercooked meats, poultry, seafood, shellfish, or eggs may increase your risk for foodborne illness, especially if you have certain medical condition.

All Ashore: Approx. 8:30 a.m.
 All Aboard: 5:00 p.m.

All Guest will require their Key To The World Card to debark the ship.
 All Guests 18 & older will require a photo ID when debarking the ship.