

PERSONAL NAVIGATOR

WEDNESDAY, JANUARY 15, 2014

Sunrise: 6:54 a.m. Sunset: 6:03 p.m.

Evening Attire: Cruise Casual

All Ashore: 7:45 a.m.

All Aboard: 4:00 p.m.

Wednesday: Partly Sunny High: 74°F/23°C

Thursday: Partly Sunny High: 84°F/29°C

ST. THOMAS



BUCKETS BOARDS

COMEDY PERCUSSION SHOW

WALT DISNEY THEATRE
Deck 3 & 4, Forward 
6:15 p.m. & 8:30 p.m.

 Assistance available at the entrance to the Walt Disney Theatre 30 minutes prior to show time.

St. Thomas Port Information

Once largely occupied by Dutch-owned sugar cane plantations and pirates of the Caribbean, St. Thomas and St. John of the U.S. Virgin Islands are some of the most popular tropical tourist destinations in the world. A destination that boasts so many sites for sport, relaxation and leisure has a culture that is still influenced in ways by its agricultural and native past.

Two-thirds of the island of St. John, a short ferry ride from St. Thomas, is a National Park. Not only is this part of the island the most beautiful it is also the most serene, surrounded by shimmering bays and beaches.

A place so celebrated today for its pristine tranquility and peaceful way of life was—for 150 years—a notorious pirate post before the islands were conquered by the Dutch West Indian Company.

The islands have seen a steady rise in tourism since, and today, there is an entire world of leisure and adventure to explore on St. Thomas and St. John.



FAMILY DANCE PARTY

Bring the family out to this interactive dance party featuring The Three Amigos. We will party with Donald Duck, learn Salsa, Merengue and have a Latin good time!

D Lounge,
Deck 4, Midship,
10:15 p.m.

Don't Miss:

Art of The Theme Show Tour (18+)

Pre-Book at Guest Services, Deck 3, Midship

Join us on a guided ship tour and discover the key ingredients that make the Disney Fantasy cruise ship one-of-a-kind.

Disney Animation: Persistence of Vision

D Lounge, Deck 4, Midship - 4:00 p.m.

Go behind the scenes at Walt Disney Animation Studios and learn the principles that make animation work, and try your hand at creating your own easy animation demonstration in this fun and fascinating enrichment program.

80's Music Challenge (18+)

The Tube, Deck 4, Aft - 10:30 p.m.

"Moon Walk" back to the 80's as we put your musical knowledge of the decade to the test.



TIME ZONE CHANGE

Remember to turn your clocks **BACK 1 HOUR** upon retiring on **WEDNESDAY** evening or first thing **THURSDAY** morning.

DOCKING

The ship docks at Havensight Mall Dock, which is also known as West Indian Company Dock.



IMPORTANT INFORMATION

Please check your tour tickets for meeting times and locations. Visit the Port Adventures Desk, Deck 5, Midship for any questions.

DINNER MENU

Animator's Palate : Prince and Princess Menu
Enchanted Garden : Prince and Princess Menu
Royal Court : Prince and Princess Menu

DRINK OF THE DAY

Paradise (Alcoholic)
Cranberry No-Jito
(Non Alcoholic)

IMPORTANT NUMBERS

Fire/Security: 7-3001
Medical Emergency: 7-3000
Health Center: 7-1923

FUN FOR ALL AGES HIGHLIGHTS

DISNEY TRIVIA

La Piazza, Deck 4, Aft - 3:15 p.m.

Navigate your way through another round of questions to test how much you really know about Disney.



DISNEY ANIMATION: PERSISTENCE OF VISION

D Lounge, Deck 4, Midship - 4:00 p.m.

Go behind the scenes at Walt Disney Animation Studios and learn the principles that make animation work, and try your hand at creating your own easy animation demonstration in this fun and fascinating enrichment program.

PLAYHOUSE D LOUNGE

D Lounge, Deck 4, Midship - 5:00 p.m.

Calling our youngest of cruisers! Here is a special playtime that is just for you. Come meet new friends; and join in on the fun as your Cruise Staff team takes you through interactive activities made just for you!

LIVE MUSIC WITH DARIA & ROBERTO

Lobby Atrium, Deck 3, Midship - 5:15 p.m., 7:15 p.m. & 9:30 p.m.

Join Daria & Roberto as they play live tonight for your listening pleasure.



SALUDOS AMIGOS FIESTA

D Lounge, Deck 4, Midship - 10:15 p.m.

Come see what Donald and his friends are up to this time. Bring the family out to this interactive dance party featuring fun Latin music! Your family will learn to Salsa, Merengue and just have a Latin good time!

ADULT ACTIVITY HIGHLIGHTS

SENSES SPA FITNESS CLASSES & SEMINARS

Sunrise Stretch - Donald's Pool - 7:00 a.m.

Fab Abs - Donald's Pool - 7:30 a.m.; Senses Fitness Center - 5:00 p.m.

Body Sculpt Boot Camp (Nom. Fee) - Senses Fitness Center - 8:00 a.m.

Pilates - Senses Fitness Center - 4:00 p.m.

Footprint Analysis Clinic - Senses Fitness Center - 5:30 p.m.



CLUB 18*21 - ARR-CADE SOCIAL

Arr-cade, Deck 11, Aft - 5:00 p.m.



CLUB 18*21 - MIXER

The Tube, Deck 4, Aft - 9:45 p.m.

Come to join fellow cruisers your own age at our exclusive Club 18*21 event.

LIVE PIANO WITH GAYLA SMITH

La Piazza, Deck 4, Aft - 5:15 p.m., 7:15 p.m., 9:15 p.m.

Join Gayla Smith as she plays live for your listening pleasure, including special tribute to Billy Joel and Elton John at 7:15 p.m.



ESPN DREAM TEAM DRAFT DAY - BASKETBALL

O'Gills Pub, Deck 4, Aft - 5:30 p.m.

Join the "Commissioner" and engage in this interactive fantasy basketball draft unlike anything you've ever seen! Can YOU draft the greatest basketball team of All-Time?

POPI!

The Tube, Deck 4, Aft - 10:00 p.m.



Have you been told you are full of useless information about pop culture? If the answer is "Yes", then you have what it takes to play the high energy game show all about the world of Pop!

LIVE MUSIC WITH TAKE COVER

La Piazza, Deck 4, Aft - 10:15 p.m. & 11:30 p.m.

Join Take Cover as they play live tonight for your listening pleasure.

LIVE GUITAR WITH TONY DELANEY

O'Gills Pub, Deck 4, Aft - 10:45 p.m.

Join Tony Delaney as he plays live guitar for your listening pleasure.

MEGA RAFFLE JACKPOT BINGO

D Lounge, Deck 4, Midship

Card Sales - 7:15 p.m.

Game Starts - 7:30 p.m.

Join your Cruise Staff for family Bingo fun! Four cash prize games and great raffle prize packs to be won. Plus free Disney goodies for all in attendance! Don't miss out on the fun!



YOUTH ACTIVITY HIGHLIGHTS

DINE & PLAY

A convenience for families dining at 8:15 p.m., our Youth Activities Counselors will be available at 9:15 p.m. at the entrance of Royal Court, Enchanted Garden and Animator's Palate dining rooms to bring registered children to join the fun in the Youth Activity areas.



Deck 5, Midship (7-1440)

(3-12 years old)

10:00 a.m. - 11:00 p.m.

JOURNEY TO NEVERLAND

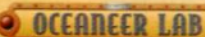
10:00 a.m.

Join Peter Pan as he takes you on an adventure on the Magic Playfloor.

PLUTO'S PAJAMA PARTY

8:30 p.m.

Bring the little ones in their pajamas but there will be anything but sleep when Pluto and friends host the ultimate slumber party!



Deck 5, Midship (7-1445)

(3-12 years old)

7:30 a.m. - 12:00 mid

MAGIC SHOW

2:00 p.m.

The Magnificent Magician will demonstrate to you some of the best known magic tricks on the sea.

PICTURE THIS

7:30 p.m.

Create your own professional picture frame and take a photo with a special guest.



Deck 13, Midship (7-9743)

(11-14 years old)

9:00 a.m. - 1:00 a.m.

ESPN DREAM TEAM DRAFT DAY - BASEBALL

1:45 p.m.

Play ball! Join the "Commissioner" and engage in this interactive fantasy baseball draft unlike anything you've ever seen! Can YOU draft the greatest baseball team of All-Time?

GENDER WARS

11:00 p.m.

It's the battle of girls vs. boys... Who will dominate to win the ultimate battle?



Entrance on Deck 4, Forward (7-9418)

(14-17 years old)

11:00 a.m. - 2:00 a.m.

DISNEY ANIMATION: CREATING A CHARACTER

3:30 p.m.

Go behind the scenes at Walt Disney Animation Studios as Walt Disney himself talks about his most famous characters, then learn the basic techniques of drawing Mickey and Donald in this fun and interesting enrichment program.

THAT'S HILARIOUS

9:00 p.m.

Ever wanted to show off your comedy skills? Then be a part of the cast for the crazy improv show "That's Hilarious" and put on a live show for your friends.

BUENA VISTA THEATRE

Deck 4 & 5, Forward
Today's Movies

OC - Open Captioning



12:00 p.m.

Duration: 2 hrs 5 mins

Rating: PG-13



2:45 p.m.

Duration: 1 hr 48 mins

Rating: PG



5:00 p.m. & 8:00 p.m.

Duration: 2 hrs 29 mins

Rating: PG-13



11:00 p.m.

Duration: 2 hrs 5 mins

Rating: PG-13



Be a singing sensation when you and your family take to the stage and sing along to your favorite song.

D Lounge,
Deck 4, Midship,
9:30 p.m. & 11:15 p.m.



Hop onboard and hit the dance floor as we take you on a ride through the charts, partying it up to some of the hottest British hits!

The Tube (18+),
Deck 4, Aft,
11:00 p.m.

YOUTH ACTIVITIES OPEN HOUSE

Open House is an opportunity for all to come and participate in a variety of exciting activities and free time in the Oceaneer Club, Oceaneer Lab, It's A Small World Nursery, Vibe and Edge throughout the cruise. During these times secured programming will still be offered in the other venue for those looking to check their children into care.

Disney's Oceaneer Lab: 3:15 p.m. - 5:00 p.m.

Disney's Oceaneer Club: 10:00 a.m. - 12:00 p.m.

Vibe: 11:00 a.m. - 12:00 p.m. & 6:30 p.m. - 8:30 p.m.

Edge: 9:00 a.m. - 11:00 a.m. & 5:00 p.m. - 6:30 p.m.

MORE TO ENJOY WHILE ONBOARD

MORE MAGIC IN THE MEDITERRANEAN

Set sail for Europe in summer 2014! Choose from an array of Mediterranean getaways departing from Barcelona or Venice, including a 12-night cruise that sails to the Greek Isles, Turkey and Malta. Begin your journey today! Visit the Future Cruise Sales Desk to learn more about our special onboard booking offer.

PORT AND SHOPPING INFORMATION

St. Thomas is the most famous shopping port in the Caribbean. Take advantage of the Tax & Duty Free savings and meet your Port Shopping Guides Marissa & Johan in Diamonds International #1a Downtown between 11:00 a.m. - 12:00 p.m. Make sure to pick up your shopping coupons on the gangway!

MIDSHIP DETECTIVE AGENCY

The puppies from 101 Dalmatians have gone missing! Use your special detective "badge" to track down the puppies and catch the villain who took them. Decks 2 & 5, Midship.

ONBOARD AIRLINE CHECK IN

If you would like to have your boarding passes printed for you onboard and have your luggage taken to the airport for you, register by midnight tonight. If you have Disney Cruise Line airport transfer to Orlando International Airport and fly with one of the participating airlines. Stop at Guest Services, Deck 3, Midship.

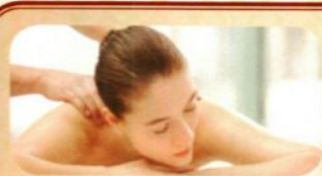
WIRELESS INTERNET: KEEPING YOU CONNECTED AT SEA

\$0.75 per minute, or save money by buying blocks of time. \$55.00 for 100 minutes, \$100.00 for 250 minutes and \$150.00 for 500 minutes. Wireless information sheets are available at Guest Services, Deck 3, Midship.

Please note: Due to satellite connectivity, onboard internet service will be noticeably slower than you may be accustomed to and may at times be interrupted or unavailable.

FREE ON DEMAND TV

Watch Disney movies, Hollywood features and even captioned content, plus much more "On Demand" for FREE in the comfort of your stateroom! Bookmark your movie and come back to watch it later. Press MENU on your stateroom television remote control, and follow the prompts.



SENSES
SPA & SALON

SPA TASTER SPECIAL

TWILIGHT TREATMENTS

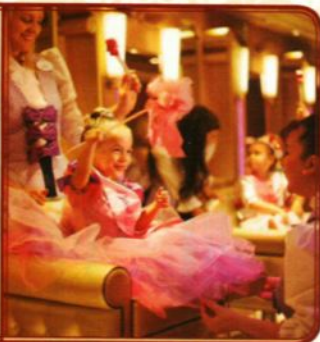
- Wellbeing Massage
- Skin Bliss Facial
- Slimming Treatment
- Spa Taster

Choose any 50 min. service
for only \$99

BIBBIDI BOBBIDI BOUTIQUE

Deck 5, Midship

Becoming the princess of your dreams creates memories for a lifetime. Where Fairy Godmothers in training are ready with Pixie Dust and Magic! Make your reservations for princess makeovers and the Pirate League today. Limited space available. Visit Bibbidi Bobbidi Boutique or call ext. 9438 to make a reservation.



Shutters

GET THE PICTURE

Order a Get the Picture! photo disc and share your vacation memories digitally! No need to decide which photos to take home now, select your photos from the comfort of your home.

Print, send and share your photos easily!

Hurry as supplies are limited.

**Terms and conditions apply. Photos captured on your vacation are only available for purchase during this cruise.*

PORT ADVENTURES

The Port Adventures Desk is open this morning for your last minute St. Thomas reservations. Let us take care of everything from beach breaks, St. Thomas Island tours and sailing adventures to neighboring Islands. Don't forget to reserve space for the trip to St. John and its beautiful Trunk Bay beach. For the more adventurous, join us for the Screamin' Eagle or one of the many Catamaran Sail and Snorkel excursions. Your friendly Port Adventures team is located on Deck 5, Midship.

SHOPPING

HAPPY NEW YEAR WITH DISNEY CRUISE LINE

Welcome the New Year and commemorate your Disney cruise with a wide selection of 2014 Disney Cruise Line merchandise. From t-shirts to towels and more, you are sure to find a special souvenir for the whole family. Mickey's Mainsail, Deck 3, Forward.

GREAT DEALS WHEN SHOPPING ONBOARD

Visit Whitecaps on Deck 3, Forward, for a wide variety of fine jewelry and brand name timepieces such as Ernst Benz and more! For a limited time, receive 25% off the ticketed price of Dior Watches and/or receive 25% off the ticketed price of Dinero Jewelry. Discount taken at register. Offer not valid on previous purchases. No other discounts apply. Offer valid while supplies last. Offer subject to change without notice.

CELEBRATING 15 YEARS WITH DISNEY CRUISE LINE®

Happy Anniversary, Disney Cruise Line®! Disney Cruise Line® is celebrating its 15th year with an assortment of special edition items such as graphic tees, photo albums, and more! Available for a limited time only, swing by Sea Treasures for your own commemorative item! Deck 3, Forward.

UNIQUE DISNEY ART AT THE VISTA GALLERY

Stop by the Vista Gallery to view original artwork by a variety of celebrated Disney artists featuring some of your favorite Disney characters. Also check out unique Disney art painted on original dessert plates from the Animator's Palate Restaurants on the Disney Magic® Cruise Ship and Disney Wonder® Cruise Ship. Created by popular Disney artists, Mark Seppala and Joe Kaminski, these one-of-a-kind plates are available exclusively on Disney Cruise Line® while supplies last. Deck 4, Midship.

NEW DISNEY CRUISE LINE COMPASS COLLECTION MERCHANDISE

Commemorate your Disney cruise with the new nautical themed Disney Cruise Line merchandise from the Compass collection. Step into Sea Treasures, Deck 3 Forward, for the wide selection of Compass items including hats, t-shirts, and a fleece blanket.

Due to port regulations, when the ship is docked, the stores will remain closed.

IMPORTANT INFORMATION

Security Notice

All Guests (including children) who wish to disembark the ship are required to present their Key to the World card at the gangway. A photo ID is also required for those Guests who are 18 years of age or older. Guests under the age of 18 are required to have a parent, guardian or other responsible adult sign an authorization form at the Guest Service Desk if they wish to go ashore unaccompanied or with any adult from another stateroom.

Sunscreen/Insect Repellent Advisory
Please remember to use plenty of sunscreen and mosquito repellent when venturing ashore.

Cold and Flu Reminder

Please wash hands frequently and thoroughly, particularly before meals. Contact the Health Center by dialing 7-1923, should anyone in your party become ill.

Corridor Quiet Hours

As a courtesy to all our Guests, please recognize quiet hallway hours from 10:00 p.m. till 8:00 a.m.

Inclement Weather

For the safety of all Guests, outdoor events may be changed due to unforeseen weather conditions.

Environmental Message

With Disney's commitment to the Environment, please refrain from throwing anything over the Ship's side. Thank you!

No Reserved Seats Policy

As a courtesy to all our Guests, we kindly advise that the saving of seats is not permitted in the Walt Disney Theatre, and the saving of the sun loungers is not permitted on Deck 11, 12, and 13. Items left unattended will be returned to lost and found at Guest Services, Deck 3 Midship.

Smoking

For the comfort of our guests, the following areas are designated as smoking areas:

- Deck 13, forward, port side by Currents
- Deck 12, aft, port side outdoor area that is accessible through the Meridian Lounge
- Deck 4, aft, port side from 6:00 p.m. to 6:00 a.m. only (all of Deck 4 is non-smoking from 6:00 a.m. to 6:00 p.m.) Smoking is prohibited inside all guest staterooms and on stateroom verandahs. Guest found smoking in their staterooms or on their verandahs will be charged a \$250 stateroom recovery fee.

Walt Disney Theatre

Theatrical performances may use artificial fog, strobe lights, pyrotechnics and other special effects. For the safety of our performers and the comfort of those around you, the use of any photography, video recording device or any electronic equipment is prohibited.

Verandah Safety

Please do not leave any combustible materials on your balcony when not present in your stateroom for safety reasons.

Morning	8:30	8:45	9:00	9:15	9:30	9:45	10:00	10:15	10:30	10:45	11:00	11:15	11:30	11:45	12:00	12:15	12:30	12:45	1:00	1:15	1:30							
FUNNEL VISION	A Bug's Life (G) Funnel Vision								Monsters, Inc. (G) Funnel Vision								Toy Story (G) Funnel Vision											
BUENA VISTA THEATRE															Saving Mr. Banks (PG-13) - Open Captioning Duration: 2 Hours 5 Minutes													
CHARACTER	Please refer to Character Board in Lobby Atrium for today's Character Appearances Don't forget your Camera to capture those Magical Moments!																											
FUN FOR ALL AGES	Port Adventures - Please check your tickets for meeting times and locations																											
	Youth Activities Open House										Youth Activities Open House					Midship Detective Agency Deck 2 & 5, Midship												
	Board Games Available in O'Gills Pub						Youth Activities Open House																					
ADULTS	Friends of Bill W. Outlook																				Pub Quiz O'Gills Pub							
	Books and Magazines available in Cove Cafe																											
VIBE 14-17 YEARS OLD											Youth Activities Open House					Teen Choice				Ice Cream Social								
EDGE 11-14 YEARS OLD	Youth Activities Open House										Bingo					Just Dance				Scavenger Hunt								
OCEANEER LAB 3-12 YEARS OLD	Games & More		Human Bingo									Gaga Ball					Float Fun Trivia											
					Pathfinders								Craft Corner					Animation Cells										
OCEANEER CLUB 3-12 YEARS OLD					Journey to Neverland												Lunch			Magic Playfloor								
					Youth Activities Open House																							
Afternoon	1:45	2:00	2:15	2:30	2:45	3:00	3:15	3:30	3:45	4:00	4:15	4:30	4:45	5:00	5:15	5:30	5:45	6:00	6:15	6:30	6:45							
FUNNEL VISION					Cars (G) Funnel Vision																Toy Story 2 (G) Funnel Vision							
BUENA VISTA THEATRE					Frozen (PG) Duration: 1 Hour 48 Minutes												The Lone Ranger (PG-13) Duration: 2 Hours 29 Minutes											
CHARACTER																	Princess Anna Lobby Atrium (H)				Aladdin DK 4, Balcony		Minnie Lobby Atrium (H)					
																	Stitch Preludes				Snow White Preludes							
FUN FOR ALL AGES					Xbox® Kinect™ Just Dance Challenge O'Gills Pub				Disney Trivia La Piazza				ANIMATION Persistence of Vision D Lounge				Playhouse D Lounge D Lounge								The Rhythm and Comedy of BUCKETS N BOARDS Walt Disney Theatre			
					Midship Detective Agency Deck 2 & 5, Midship				Live Guitar with Tony Delaney Deck 12, Forward				Live Guitar with Tony Delaney Deck 12, Forward				Live Music with Take Cover Deck 12, Forward				Family Crafts - Button Making D Lounge							
ADULTS					Art of The Theme Show Tour Pre-Book at Guest Services												Club 18°21° - Arr-cade Social Arr-cade				ESPN Dream Team Draft Day - Basketball O'Gills Pub							
													Pilates Senses Fitness Center				Fab Abs Senses Fitness Center				Free Footprint Analysis Senses Spa & Salon							
VIBE 14-17 YEARS OLD	Matinee Movie										Disney Animation: Creating a Character				Craft Corner								Open House					
EDGE 11-14 YEARS OLD	ESPN Dream Team Draft Day - Baseball		Crafts Galore		Crowning the Couch Potato		Sports Deck Fun								Youth Activities Open House													
OCEANEER LAB 3-12 YEARS OLD	Magic Show		Marshmallow Olympics		Youth Activities Open House														Four Square									
	Animation Cells						Super Sloppy Science														Pictionary							
OCEANEER CLUB 3-12 YEARS OLD			Craft Corner				Scavenger Hunt						Games & More								Cruisin' with Crush							
			Games & More										Craft Corner								Craft Time							
Evening	7:00	7:15	7:30	7:45	8:00	8:15	8:30	8:45	9:00	9:15	9:30	9:45	10:00	10:15	10:30	10:45	11:00	11:15	11:30	11:45	12:00							
FUNNEL VISION					The Incredibles (PG) Funnel Vision												The Avengers (PG-13) Funnel Vision											
BUENA VISTA THEATRE					The Lone Ranger (PG-13) Duration: 2 Hours 29 Minutes																Saving Mr. Banks (PG-13) Duration: 2 Hours 5 Minutes							
CHARACTER	Mickey Lobby Atrium (H)		Snow White Preludes		Snow White DK 4, Balcony				Aladdin DK 4, Balcony				Cinderella DK 4, Balcony		Tiana Preludes													
	Stitch DK 4, Balcony		Princess Anna Lobby Atrium (H)		Minnie Lobby Atrium (H)								Snow White Lobby Atrium (H)		Goofy Lobby Atrium (H)													
FUN FOR ALL AGES	Bingo Pre Sales		MEGA BINGO D Lounge				BUCKETS N BOARDS Walt Disney Theatre				Family Superstar Karaoke D Lounge		THE TUBE D Lounge		VIVA FIESTA D Lounge		FAMILY SUPERSTAR KARAOKE D Lounge											
	Family Dance Party The Tube								Family Crafts - Button Making D Lounge				Live Music with Daria & Roberto Lobby Atrium															
ADULTS	Live Guitar with Tony Delaney O'Gills Pub												DJ Requests The Tube		THE TUBE		80's Music Challenge The Tube		THE TUBE		80's/90's Remix with Club DJ Mike Sincere The Tube							
	Gayla Smith: Tribute to Billy Joel & Elton John La Piazza								Live Piano with Gayla Smith La Piazza																			
VIBE 14-17 YEARS OLD	Youth Activities Open House														That's Hilarious								Mix and Match					
EDGE 11-14 YEARS OLD	Anyone Can Cook: Cupcakes				Chillin' in Edge				Tween Choice						Ghost Voyagers		Gender Wars		Karaoke									
OCEANEER LAB 3-12 YEARS OLD	Face Paint Time								GAGA Ball								Super Sloppy Science											
					Picture This								Craft Corner															
OCEANEER CLUB 3-12 YEARS OLD	Once Upon a Time																Bingo											
									Pluto's Pajama Party																			

Symbol for activities that will be repeated during the cruise

Youth Activities Open House

FOLD

Fold along the dotted lines and take me with you so you don't miss any of the fun!

FOLD

IN THE SPOTLIGHT SERIES
SOLVE IT! SERIES

JUMP UP! SERIES
CREATE & INVENT SERIES

CLUBHOUSE SERIES
STORYBOOK SERIES

WEDNESDAY, JANUARY 15, 2014 - ST. THOMAS

BUENA VISTA THEATRE

Deck 4 & 5, Forward

Open Captioning



12:00 p.m.
Duration:
2 hrs 5 mins
Rating: PG-13



2:45 p.m.
Duration:
1 hr 48 mins
Rating: PG



5:00 & 8:00 p.m.
Duration:
2 hrs 29 mins
Rating: PG-13



11:00 p.m.
Duration:
2 hrs 5 mins
Rating: PG-13

Character Appearances

MICKEY MOUSE
Lobby Atrium (H)
5:00 p.m. & 7:15 p.m.

PRINCESS TIANA
Deck 4, Balcony - 5:15 p.m.
Preludes - 10:00 p.m.

STITCH
Preludes
5:15 p.m. & 9:30 p.m.
Deck 4, Balcony - 7:15 p.m.

**PRINCESS ANNA
OF ARENDELLE**
Lobby Atrium (V)
5:15 p.m., 7:30 p.m.
& 9:30 p.m.

PETER PAN
Lobby Atrium (P) - 5:15 p.m.

ALADDIN & GENIE
Deck 4, Balcony
5:45 p.m. & 8:15 p.m.
Lobby Atrium (P)
10:00 p.m.

CINDERELLA
Lobby Atrium (P) - 5:45 p.m.
Deck 4, Balcony - 9:30 p.m.

SNOW WHITE & DOPEY
Preludes
5:45 p.m. & 7:30 p.m.
Deck 4, Balcony - 7:45 p.m.
Lobby Atrium (P)
9:30 p.m.

MINNIE MOUSE
Lobby Atrium (H)
6:00 p.m. & 7:45 p.m.

DONALD DUCK
Lobby Atrium (H)
9:30 p.m.

BELLE
Deck 4, Balcony
10:00 p.m.

GOOFLY
Lobby Atrium (H)
10:00 p.m.



(H) Hallway - (S) Starboard Side - (P) Port Side - (V) Vestibule

For details of daily Disney character appearances, refer to the character line in your Navigator Grid or the digital character board in the Lobby Atrium.

YOUTH ACTIVITIES THEMED EXPERIENCES

CLUBHOUSE SERIES
focuses on movement and features content which appeals to younger children.

JUMP UP! SERIES
includes large group games & movement-oriented activities.

IN THE SPOTLIGHT SERIES
focuses on children's stage presence with lots of activities and enthusiasm.

STORYBOOK SERIES
is designed with a strong connection to the Disney classic stories.

CREATE & INVENT SERIES
will have a tactile focus allowing children to create and admire their work.

SOLVE IT! SERIES
are less active, but will challenge children with problem/solutions-based activities.

YOUTH ACTIVITIES OPEN HOUSE

A non-secured program with activities for families, adults and children of all ages to enjoy together.

SHIP DIRECTORY

YOUTH ACTIVITIES

DISNEY'S OCEANEER CLUB	DECK 5, MID	10:00 AM - 11:00 PM
DISNEY'S OCEANEER LAB	DECK 5, MID	7:30 AM - 12:00 MID
EDGE	DECK 13, MID	9:00 AM - 1:00 AM
VIBE	DECK 4, FWD	11:00 AM - 2:00 AM
IT'S A SMALL WORLD NURSERY	DECK 5, MID	7:30 AM - 11:00 PM

POOLS & MORE

* Children under 12 must have adult supervision in pool areas.

AQUADUCK	DECK 12, MID	9:00 AM - 10:00 PM
AQUALAB	DECK 12, AFT	1:00 PM - 7:00 PM
DONALD'S POOL	DECK 11, MID	9:00 AM - 6:00 PM
		8:00 PM - 10:00 PM
MICKEY'S POOL	DECK 11, MID	6:00 AM - 11:00 PM
MICKEY'S SLIDE	DECK 11, MID	9:00 AM - 6:00 PM
NEMO'S REEF	DECK 11, MID	9:00 AM - 6:00 PM
QUIET COVE POOL	DECK 11, FWD	6:00 AM - 12:00 MID
SATELLITE FALLS	DECK 13, FWD	6:00 AM - 8:00 PM

RECREATION

GOLF/SPORTS SIMULATORS	DECK 13, AFT	9:00 AM - 6:00 PM
GOOFLY GOLF	DECK 13, AFT	8:00 AM - 10:00 PM
GOOFLY'S SPORTS DECK	DECK 13, AFT	8:00 AM - 6:00 PM
MIDSHIP DETECTIVE AGENCY	DECKS 2 & 5, MID	9:00 AM - 10:00 PM
PORT ADVENTURES DESK	DECK 5, MID	7:30 AM - 10:00 AM
SENSES FITNESS CENTER	DECK 11, FWD	6:00 AM - 10:00 PM

GENERAL INFORMATION

ARR-CADE	DECK 11, AFT	24 HOURS
DISNEY VACATION CLUB	DECK 4, MID	5:30 PM - 10:00 PM
FUTURE CRUISE SALES DESK	DECK 4, MID	9:00 AM - 10:00 AM
		4:00 PM - 6:00 PM
		7:30 PM - 10:00 PM
GUEST SERVICES	DECK 3, MID	24 HOURS
MEDICAL HEALTH CENTER	DECK 1, FWD	9:30 AM - 11:00 AM
		4:30 PM - 7:00 PM
PORT & SHOPPING DESK	DECK 4, MID	7:30 PM - 8:30 PM
PRELUDES	DECK 3, FWD	5:45 PM - 6:30 PM
		8:00 PM - 8:45 PM
SENSES SPA AND SALON	DECK 11, FWD	8:00 AM - 10:00 PM
SHUTTERS PHOTO GALLERY	DECK 4, MID	5:00 PM - 10:30 PM
SHUTTERS DIGITAL	DECK 4, MID	24 HOURS

SHOPPING

BIBBIDI BOBBIDI BOUTIQUE	DECK 5, MID	9:00 AM - 9:00 PM
MICKEY'S MAINSAIL	DECK 3, FWD	4:30 PM - 11:00 PM
QUACKS	DECK 11, MID	
SEA TREASURES	DECK 3, FWD	4:30 PM - 11:00 PM
VISTA GALLERY	DECK 4, MID	6:00 PM - 10:00 PM
WHITECAPS	DECK 3, FWD	4:30 PM - 11:00 PM
WHOZITS & WHATZITS	DECK 11, MID	

DINNER MENU

Animator's Palate: Prince & Princess
Enchanted Garden: Prince & Princess
Royal Court: Prince & Princess
Dining Times: 5:45 p.m. & 8:15 p.m.

DRINK OF THE DAY

Paradise (Alcoholic)
Cranberry No-Ju (Non Alcoholic)

WEATHER FORECAST

Wednesday: Partly Sunny
High: 74°F/23°C
Thursday: Partly Sunny
High: 84°F/29°C

Evening Attire: Cruise Casual

DINING & LOUNGES

BREAKFAST

CABANAS CONTINENTAL	DECK 11, AFT	6:15 AM - 6:45 AM
CABANAS	DECK 11, AFT	6:45 AM - 10:30 AM
ENCHANTED GARDEN	DECK 2, MID	7:45 AM - 9:45 AM
ROYAL COURT	DECK 3, MID	8:00 AM - 9:30 AM

LUNCH

CABANAS	DECK 11, AFT	12:00 PM - 2:15 PM
FILLMORE'S FAVORITES	DECK 11, MID	11:00 AM - 6:00 PM
LUIGI'S PIZZA	DECK 11, MID	11:00 AM - 6:00 PM
ROYAL COURT	DECK 3, MID	12:00 PM - 1:30 PM
TOW MATER'S GRILL	DECK 11, MID	11:00 AM - 11:00 PM

DINNER

ANIMATOR'S PALATE	DECK 3, AFT	5:45 PM & 8:15 PM
ENCHANTED GARDEN	DECK 2, MID	5:45 PM & 8:15 PM
ROYAL COURT	DECK 3, MID	5:45 PM & 8:15 PM
CABANAS TABLE SERVICE	DECK 11, AFT	6:30 PM - 8:30 PM
PALO (18+) (Reservations Req. & Non-Fee Apprx)	DECK 12, AFT	6:00 PM - 8:30 PM
REMY (18+) (Reservations Req. & Non-Fee Apprx)	DECK 12, AFT	6:00 PM - 8:30 PM

LATE NIGHT SNACKS

LA PIAZZA (18+)	DECK 4, AFT	10:45 PM - 11:45 PM
LUIGI'S PIZZA	DECK 11, MID	9:30 PM - 12:30 AM

ADDED FEATURES

BEVERAGE STATION	DECK 11, MID	24 HOURS
EYE SCREAM	DECK 11, MID	11:00 AM - 11:00 PM
ROOM SERVICE	DIAL 0	24 HOURS

ENTERTAINMENT - LOUNGES - BARS

Adults must be 21 and older to consume alcoholic beverages.

BON VOYAGE	DECK 3, MID	2:00 PM - 11:00 PM
COVE BAR (18+)	DECK 11, FWD	11:00 AM - 11:00 PM
COVE CAFE (18+)	DECK 11, FWD	7:00 AM - 12:00 MID
CURRENTS (18+)	DECK 13, FWD	11:00 AM - 11:00 PM
D LOUNGE	DECK 4, MID	SHOWTIMES
FROZEN TREATS	DECK 11, MID	1:00 PM - 10:00 PM
LA PIAZZA (18+ AFTER 9:00 P.M.)	DECK 4, AFT	3:00 PM - 12:00 MID
MERIDIAN (18+)	DECK 12, AFT	12:00 PM - 12:00 MID
O'GILLS PUB (18+ AFTER 9:00 PM)	DECK 4, AFT	3:00 PM - 12:00 MID
OOH LA LA (18+)	DECK 4, AFT	5:00 PM - 12:00 MID
OUTLOOK	DECK 14, MID	SUNSET TIMES
SKYLINE (18+)	DECK 4, AFT	5:00 PM - 12:30 AM
THE TUBE (18+ AFTER 9:00 P.M.)	DECK 4, AFT	10:00 PM - 2:00 AM
VISTA CAFE	DECK 4, MID	7:00 AM - 11:00 PM
WAVES	DECK 12, AFT	1:00 PM - 6:00 PM

Consumers who order raw or partially cooked, ready-to-eat food of animal origin, are hereby informed that the food is not sufficiently cooked to ensure its safety.



TIME ZONE CHANGE

Remember to turn your clocks **BACK 1 HOUR** upon retiring on **WEDNESDAY** evening, or first thing **THURSDAY** morning.

All Ashore: Approx. 7:45 a.m.
All Aboard: 4:00 p.m.

SHIP'S AGENT IN ST. THOMAS

Virgin Port Services, 1001 Blackbeard's Hill,
St. Thomas, USVI 00802
Tel.: 340-775-1151, 305-608-1908

IMPORTANT NUMBERS

Fire/Security: 7-3001
Medical EMERGENCY: 7-3000
Health Center: 7-1923