

PERSONAL NAVIGATOR

Sunrise 7:26 a.m. Sunset: 6:21 p.m.
Evening Attire: Cruise Casual

Monday: Partly Sunny High: 78°F/26°C
Tuesday: Partly Sunny High: 78°F/26°C

MONDAY, JANUARY 13, 2014

DAY AT SEA

Disney WISHES

On the eve of their graduation, three best friends go on a magical journey down the wishing well. A host of Disney characters help them discover the connection between children who are becoming adults, and adults who stay in touch with being a kid at heart.

Walt Disney Theatre
Deck 3 & 4, Forward
3:00, 6:15 & 8:30 p.m.



As a courtesy to all Guests, we kindly advise that the saving of seats is **not** permitted in the Walt Disney Theatre.



Assistance available at the entrance to the Walt Disney Theatre 30 minutes prior to show time.



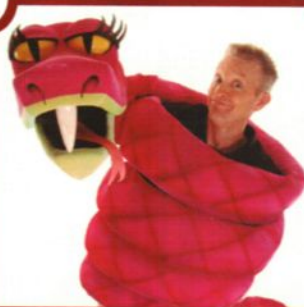
Disney FANTASY Fun Facts

The two huge mosaic walls based on the Disney-Pixar animated feature "Finding Nemo" are showcased in Cabanas casual-dining restaurant on Deck 11. Created for the Disney Fantasy by Italian artists, each wall is more than 25 feet wide and more than 8 feet high and contains approximately 194,500 tiles in 200 colors of hand-crafted Venetian enamel.

A team of nine artists created the mosaics based on Disney-Pixar designs depicting the underwater world of Australia's Great Barrier Reef and characters featured in the motion picture.

Point of Interest

On our voyage to St. Maarten, at approximately 11:00 p.m. this evening we will be passing Anegada Islands on the Starboard side.



FAMILY VARIETY ACT

Featuring the Comedy and Ventriloquism of Michael Harrison, as he entertains the entire family in this fun-filled show.

Walt Disney Theatre
Deck 3 & 4, Forward
11:00 a.m.

(Doors Open at 10:45 a.m.)

Don't Miss:

Art of The Theme Show Tour (18+)

Pre-Book at Guest Services, Deck 3, Midship.

Join us on a guided ship tour and discover the key ingredients that make the Disney Fantasy cruise ship one-of-a-kind.

Disney Animation: Cartoon Physics

D Lounge, Deck 4, Midship - 9:45 a.m. & 12:00 p.m.

Go behind the scenes at Walt Disney Animation Studios and see how flat drawings and pencil lines can come to life through basic techniques such as "Stretch and Squash", and create your own "bouncing ball" animation exercise in this entertaining and fun enrichment program.

Disney's Behind the Scenes

Featuring: Cristy Maltese, Visual Development Artist, Walt Disney Feature Animation "Out of Darkness"

Buena Vista Theatre, Deck 4 & 5, Forward - 2:00 p.m.

Join Visual Development Artist, Cristy Maltese, for a look at what you haven't been missing by looking at background paintings from classic animated films, and hear the story behind their creation. It will change how you look at animated films forever!



Sport's Simulators

Digital sports simulators are available at Goofy's Sports Deck on Deck 13, Aft. This state-of-the-art virtual sports experience includes golf, basketball, baseball, hockey, football and soccer. Book now at the Port Adventures Desk, Deck 5, Midship.

DINNER MENU

Animator's Palate: Pacific Rim Cuisine
Enchanted Garden: Continental Market Cuisine
Royal Court: French Cuisine

DRINK OF THE DAY

Yellow Bird (Alcoholic)
Lava Smoothie (Non Alcoholic)

IMPORTANT NUMBERS

Fire/Security: 7-3001
Medical Emergency: 7-3000
Health Center: 7-1923

FUN FOR ALL AGES HIGHLIGHTS

ADULT ACTIVITY HIGHLIGHTS



JAKE & THE NEVERLAND PIRATES

D Lounge, Deck 4, Midship - 9:00 a.m.

A'Ho' there mates, Join us for an adventure in D Lounge with Jake and the Neverland Pirates.

DISNEY VACATION CLUB GROUP PREVIEW

The Tube, Deck 4, Aft - 12:00 p.m.

Want to learn more about taking magical vacations year after year? Please see a Disney Vacation Club representative on Deck 4, Midship, or call 7-2805 from your stateroom phone for more information about our interactive group presentation.



DISNEY CHANNEL ON DECK

Deck Stage, Deck 11, Midship - 12:30 p.m.

Don't change that channel! It's time for a Disney Channel afternoon poolside! Your cruise staff will host an exciting day of games and contests in between your favorite Disney Channel shows! So sit back, relax, and enjoy the sun!

DIAMOND AND GEMSTONE SEMINAR

The Tube, Deck 4, Aft - 2:00 p.m.

Join your Port and Shopping Guides, and become an educated shopper. They will teach you about the exotic gemstones found in the Caribbean. FREE Tanzanite Earrings for all who attend and a raffle to win a Gemstone Pendant!



CHIP-IT GOLF (12+)

Lobby Atrium, Deck 3, Midship - 3:15 p.m.

It's par for the course for our Guests 12 and older to compete on our special "greens" in this fun tournament.

PLAYHOUSE D LOUNGE

D Lounge, Deck 4, Midship - 5:15 p.m.

Calling our youngest of cruisers! Here is a special playtime that is just for you. Come meet new friends; and join in on the fun as your Cruise Staff team takes you through interactive activities made just for you!

SO YOU THINK YOU KNOW YOUR FAMILY?

The Tube, Deck 4, Aft - 7:30 p.m.

This fun-filled family game show is always full of surprises. Find out how well you know, or don't know your family!

SENSES SPA FITNESS CLASSES & SEMINARS

Sunrise Stretch - Donald's Pool - 7:00 a.m.

Tab Abs - Donald's Pool - 7:30 a.m.

Footprint Analysis Clinic - Senses Fitness Center - 8:00 a.m.

Body Sculpt Boot Camp (Nom. Fee) - Senses Fitness Center - 9:00 a.m.

How to Increase Your Metabolism - Senses Spa & Salon - 11:00 a.m.

Back Pain Solutions - Senses Spa & Salon - 2:00 p.m.

Group Cycling - Senses Fitness Center - 4:00 p.m.

Pilates - Senses Fitness Center - 5:00 p.m.

Fitness Frenzy (13-17, Nom. Fee) - Senses Fitness Center - 7:00 p.m.



TASTING CLASSES

Rum Tasting (21+) - Meridian (Nom. Fee Pre Book) - 12:00 p.m.

Chocolate and Beverage Pairing (21+) - Ooh La La (Nom. Fee, Pre Book) - 12:15 p.m.

Mixology (21+) - Skyline (Nom. Fee, Pre Book) - 2:00 p.m. & 4:00 p.m.

Tequila & Margarita Tasting (21+) - Ooh La La (Nom. Fee, Pre Book) - 3:00 p.m. & 4:45 p.m.

Whiskey Tasting (21+) - Cove Cafe (Nom. Fee, Pre Book) - 10:00 p.m.

Cognac Tasting (21+) - Meridian (Nom. Fee Pre Book) - 10:30 p.m.

Please make reservations for tastings at Guest Services for a nominal fee.

Tasting Seminars are only for Guests 21 and Older.

CLUB 18*21 - LUNCH

Royal Court, Deck 3, Midship - 12:15 p.m.

CLUB 18*21 - XBOX® KINECT™ CHALLENGE

O'Gills Pub, Deck 4, Aft - 3:30 p.m.

CLUB 18*21 - MIXER

The Tube, Deck 4, Aft - 9:45 p.m.

Come to join fellow cruisers your own age at our exclusive Club 18*21 event.

ART OF THE THEME SHOW TOUR

Pre-Book at Guest Services, Deck 3, Midship.

Join us on a guided ship tour and discover the key ingredients that make the Disney Fantasy cruise ship one-of-a-kind.

ANYONE CAN COOK - SEA BASS

D Lounge, Deck 4, Midship - 2:15 p.m.

From our galley to yours. Join our chefs as they show you how to prepare delicious dishes. Today's Menu - Sea Bass

THE QUEST

The Tube, Deck 4, Aft - 10:00 p.m.

Enjoy the wildest and wackiest scavenger team event on the seven seas!



\$5,000 MEGA JACKPOT BINGO

D Lounge, Deck 4, Midship

Card Sales - 10:30 a.m.

Game Starts - 10:45 a.m.

Don't miss your chance to take home big money! 4 CASH prize games and great raffle prizes to be won! Complete the fourth game in 46 numbers or less and win the \$5,000 Mega Jackpot!

SENSES SPA BINGO

D Lounge, Deck 4, Midship

Card Sales - 4:00 p.m.

Game Starts - 4:15 p.m.

Four CASH prizes to be won! Plus great spa prizes that will pamper you, including a mini facial and massages all courtesy of the Senses Spa and Salon. Serenity now!

YOUTH ACTIVITIES HIGHLIGHTS

DINE & PLAY

A convenience for families dining at 8:15 p.m., our Youth Activities Counselors will be available at 9:15 p.m. at the entrance of Royal Court, Enchanted Garden and Animator's Palate dining rooms to bring registered children to join the fun in the Youth Activity areas.



Deck 5, Midship (7-5864) 9:00 a.m. - 11:30 p.m.

OPEN HOUSE

8:00 a.m. - 9:00 a.m.

Your chance to see our toddler space, It's A Small World Nursery.



Deck 5, Midship (7-1440)

(3-12 years old) 9:00 a.m. - 12:00 mid

LITTLE EINSTEIN'S ADVENTURE

11:00 a.m.

Your junior cruisers will have the time of their lives with this program inspired by their favorite show with fun activities guaranteed to make them feel like a little genius!

BIG TOP FUN FEST!

7:30 p.m.

It's the greatest show on Earth. Come re-discover the circus Disney style with clowns, jugglers and classic Disney cartoons.



Deck 5, Midship (7-1445)

(3-12 years old) 9:00 a.m. - 12:00 mid

PISTON CUP CHALLENGE

10:30 a.m.

It's Dinoco time and you're part of the pit crew! Design your own race car and see if you've got what it takes to end up in the Winner's Circle!

MARSHMALLOW OLYMPICS

1:00 p.m.

Learn all about this white sugary treat and everything it can do! Build a tower, go flying and test your agility - all with the help of a marshmallow.



Deck 13, Midship (7-9743)

(11-14 years old) 9:00 a.m. - 1:00 a.m.

DISNEY ANIMATION: CREATING A CHARACTER

10:45 a.m.

Go behind the scenes at Walt Disney Animation Studios as Walt Disney himself talks about his most famous characters, then learn the basic techniques of drawing Mickey and Donald in this fun and interesting enrichment program.

ANYONE CAN COOK: PIZZA

3:00 p.m.

Anyone can cook as we work together to create some of our favorite treats. From our galley to yours; join our chef as they show to create pizza!



Entrance on Deck 4, Forward (7-9418)

(14-17 years old) 9:00 a.m. - 2:00 a.m.

ZOMBIFIED

11:45 a.m.

A big movie producer is looking for zombies to help him film the finale to his latest masterpiece, Zombified.

BUENA VISTA THEATRE

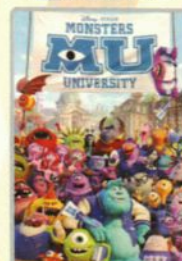
Deck 4 & 5, Forward
Today's Movies

OC - Open Captioning

DOLBY 3D



8:30 a.m.
Duration: 1 hr 32 mins
Rating: PG



10:30 a.m.
Duration: 1 hr 43 mins
Rating: G

DOLBY 3D



5:30 p.m. & 8:15 p.m.
Duration: 1 hr 51 mins
Rating: PG-13



10:30 p.m.
Duration: 2 hrs 5 mins
Rating: PG-13



Bring the entire family and test your Disney knowledge in the high-tech interactive game show, Family Fusion.

*D Lounge,
Deck 4, Midship,
7:30 p.m. & 10:15 p.m.*



ADULT VARIETY ACT

Featuring the Comedy & Juggling of Michael Holly, as he entertains you in this adult exclusive show.

*The Tube (18+),
Deck 4, Aft,
10:30 p.m.*

YOUTH ACTIVITIES OPEN HOUSE

Open House is an opportunity for all to come and participate in a variety of exciting activities and free time in the Oceaneer Club, Oceaneer Lab, It's A Small World Nursery, Vibe and Edge throughout the cruise. During these times secured programming will still be offered in the other venue for those looking to check their children into care.

Disney's Oceaneer Lab: 5:00 p.m. - 6:30 p.m.
Disney's Oceaneer Club: 9:00 a.m. - 10:30 a.m.
Vibe: 9:00 a.m. - 10:30 a.m. & 6:30 p.m. - 8:30 p.m.
Edge: 9:00 a.m. - 10:00 a.m. & 5:00 p.m. - 6:30 p.m.

MORE TO ENJOY WHILE ONBOARD

DISNEY VACATION CLUB® GROUP PREVIEW

Want to learn more about taking magical vacations year after year? Please see a Disney Vacation Club representative on Deck 4, Midship, or call 7-2805 from your stateroom phone for more information about our interactive group presentation.

PORT AND SHOPPING INFORMATION

Join Marissa & Johan for the Fine Watch Seminar to learn the difference between a \$10 watch & a \$10,000 watch La Piazza, Deck 4 Aft at 11:45 a.m. Also become an expert on Diamonds, Tanzanite & Caribbean Gems at the Diamond & Gemstones Seminar in The Tube, Deck 4 Aft at 2:00pm. This not to be missed presentation will save you time & money followed by a raffle to win a Tanzanite Pendant!

runDisney: CASTAWAY CAY 5K REGISTRATION (12+)

Sign up today for the runDisney: Castaway Cay 5K! Please visit the Port Adventures Desk or the Guest Services Desk to register at anytime prior to our arrival at Disney's Castaway Cay. Please note that runners must be 12 years of age or older to participate.

ONBOARD AIRLINE CHECK IN

If you would like to have your boarding passes printed for you onboard and have your luggage taken to the airport for you, register before Wednesday. If you have a Disney Cruise Line airport transfer to Orlando International Airport and fly with one of the participating airlines, stop at Guest Services, Deck 3, Midship to register.

WIRELESS INTERNET: KEEPING YOU CONNECTED AT SEA

\$0.75 per minute, or save money by buying blocks of time. \$55.00 for 100 minutes, \$100.00 for 250 minutes and \$150.00 for 500 minutes. Wireless information sheets are available at Guest Services, Deck 3, Midship.

Please note: Due to satellite connectivity, onboard internet service will be noticeably slower than you may be accustomed to and may at times be interrupted or unavailable.

MIDSHIP DETECTIVE AGENCY

Use your detective know-how and our special detective "badge" to search the ship and catch the criminal! Deck 2 & 5, Midship.



SENSES
SPA & SALON

ELEMIS OXYDERMIE FACIAL

Give your skin what it has been craving. Now you can fight lines, wrinkles, spots and get the radiant glow that's been eluding you. Let us pamper your skin with our new cutting-edge technology that brings Microdermabrasion and Oxygen together in one luxurious treatment.

50 minutes for \$169

TODAY'S SHOPPING SPECIAL

Swiss made watches with intricate details. Purchase face and band separately to personalize the look.

Available ONLY in
Whitecaps,
Deck 3 Forward.

WHITECAPS



Shutters

GET THE PICTURE!

Ask our friendly photographers about "Get the Picture!" And get the incredible value of an unlimited digital photo package, which includes all of your stateroom photos.

Visit Shutters today as supplies are limited.

**Terms and conditions apply. The Photo Book is only available for purchase during this cruise.*

Disney Cruise Line PORT ADVENTURES

Tomorrow the two nation island of St. Maarten / St. Martin awaits us. Your knowledgeable Port Adventures team is standing by to answer all your questions about the best choices for you and your family. Enjoy the beautiful and magnificent Orient Bay Beach or take a rip roaring ride on a RIB boat past the airport to the French side for some snorkeling. Visit the Port Adventures Desk, Deck 5, Midship, for more information.

SHOPPING

NEW DISNEY CRUISE LINE COMPASS COLLECTION MERCHANDISE

Visit Sea Treasures and check out the wide selection of merchandise from the new Compass collection. From t-shirts to mugs featuring nautical and Disney Cruise Line themed icons, commemorate your Disney cruise with one of these great souvenirs. Deck 3, Forward.

2014 DISNEY CRUISE LINE MERCHANDISE

Step into Mickey's Mainsail today and commemorate your Disney cruise with a wide selection of 2014 Disney Cruise Line merchandise. From t-shirts to photo albums and more, you are sure to find a special souvenir for the whole family. Deck 3, Forward.

VERA BRADLEY BAGS AND ACCESSORIES

With their distinctive and colorful fabrics and trims, view our collection of Vera Bradley bags and accessories including the new Vera Bradley tote bags designed especially for Disney Cruise Line® available at Whitecaps. Deck 3, Forward.

EXOTIC ZULTANITE GEMSTONES BY PROVENANCE GEMS

Found only in Turkey's Anatolian Mountains, Zultanite is a remarkable color changing gemstone exclusive to Provenance Gems. Visit Whitecaps today to learn more about Zultanite's rare color changing quality. Deck 3, Forward.

ROYAL COURT ROYAL TEA

Hear ye, hear ye! Princes and Princesses are welcomed to join some of your favorite Disney Princesses at the Royal Court Royal Tea for an afternoon filled with music, fun, and delicious goodies! Stop by the Guest Services Desk, Deck 3, Midship, to register and to learn more about this royal event. Reservations required. Fee will apply. Limited space available.

IMPORTANT INFORMATION

Security Notice

All Guests (including children) who wish to disembark the ship are required to present their Key to the World card at the gangway. A photo ID is also required for those Guests who are 18 years of age or older. Guests under the age of 18 are required to have a parent, guardian or other responsible adult sign an authorization form at the Guest Service Desk if they wish to go ashore unaccompanied or with any adult from another stateroom.

Sunscreen/Insect Repellent Advisory
Please remember to use plenty of sunscreen and mosquito repellent when venturing ashore.

Cold and Flu Reminder

Please wash hands frequently and thoroughly, particularly before meals. Contact the Health Center by dialing 7-1923, should anyone in your party become ill.

Corridor Quiet Hours

As a courtesy to all our Guests, please recognize quiet hallway hours from 10:00 p.m. till 8:00 a.m.

Inclement Weather

For the safety of all Guests, outdoor events may be changed due to unforeseen weather conditions.

Environmental Message

With Disney's commitment to the Environment, please refrain from throwing anything over the Ship's side. Thank you!

No Reserved Seats Policy

As a courtesy to all our Guests, we kindly advise that the saving of seats is not permitted in the Walt Disney Theatre, and the saving of the sun loungers is not permitted on Deck 11, 12, and 13. Items left unattended will be returned to lost and found at Guest Services, Deck 3 Midship.

Smoking

For the comfort of our guests, the following areas are designated as smoking areas:

- Deck 13, forward, port side by Currents
- Deck 12, aft, port side outdoor area that is accessible through the Meridian Lounge
- Deck 4, aft, port side from 6:00 p.m. to 6:00 a.m. only (all of Deck 4 is non-smoking from 6:00 a.m. to 6:00 p.m.) Smoking is prohibited inside all guest staterooms and on stateroom verandahs. Guest found smoking in their staterooms or on their verandahs will be charged a \$250 stateroom recovery fee.

Walt Disney Theatre

Theatrical performances may use artificial fog, strobe lights, pyrotechnics and other special effects. For the safety of our performers and the comfort of those around you, the use of any photography, video recording device or any electronic equipment is prohibited.

Verandah Safety

Please do not leave any combustible materials on your balcony when not present in your stateroom for safety reasons.

Morning	8:30	8:45	9:00	9:15	9:30	9:45	10:00	10:15	10:30	10:45	11:00	11:15	11:30	11:45	12:00	12:15	12:30	12:45	1:00	1:15	1:30
FUNNEL VISION	The Jungle Book (G) Funnel Vision							Hercules (G) Funnel Vision							Disney Channel on Deck Deck Stage						
BUENA VISTA THEATRE	Planes (PG) - Open Captioning Duration: 1 Hour 32 Minutes							Monsters University (G) Duration: 1 Hour 43 Minutes													
CHARACTER			Daisy Dk 4, Balcony		Princess Anna Preludes		Princess Anna Gathering Lobby Atrium		Princess Anna of Arendelle Preludes		Minnie Dk 4, Balcony		Sofia Dk 4, Balcony		Character Dance Party Lobby Atrium		Peter Pan Dk 4, Balcony		Jake Dk 4, Balcony		Buzz Lobby Atrium (H)
FUN FOR ALL AGES	Toddler Time D Lounge		D Lounge Jungle Book		Crafts: Create an Ornament O'Gills Pub		Disney ANIMATION Cartoon Physics D Lounge		Bingo Pre Sales		\$5,000 Mega Jackpot BINGO D Lounge		Disney ANIMATION Cartoon Physics D Lounge		Juggling Workshop with Michael Holly D Lounge						
ADULTS	Friends of Bill W. Outlook		Art of The Theme Show Tour Pre-Book at Guest Services		Body Sculpt Boot Camp (Nom. Fee) Senses Fitness Center		Origami Hearts La Piazza		Movie Quotes Trivia O'Gills Pub		Watch Seminar La Piazza		Club 18*21 Lunch Royal Court		Singles Lunch Royal Court						
VIBE 14-17 YEARS OLD	Youth Activities Open House		Coffee Break		Dream Now! Sea Howl - Theatrical		Zombified														
EDGE 11-14 YEARS OLD	Youth Activities Open House		Spoons Challenge		Disney Animation: Creating a Character		Rockband Challenge		Mad Gab		Ball Games										
OCEANEER LAB 3-12 YEARS OLD	Magic PlayFloor		Piston Cup Challenge		Pictionary		Lunch		Marshmallow Olympics												
OCEANEER CLUB 3-12 YEARS OLD	Youth Activities Open House		Mickey's Puzzle Playtime		Scavenger Hunt		Little Einstein's Adventure														
Afternoon	1:45	2:00	2:15	2:30	2:45	3:00	3:15	3:30	3:45	4:00	4:15	4:30	4:45	5:00	5:15	5:30	5:45	6:00	6:15	6:30	6:45
FUNNEL VISION	Teen Beach Movie - (TV-G) Funnel Vision							Tangled (PG) Funnel Vision							High School Musical - (TV-G) Funnel Vision						
BUENA VISTA THEATRE	Disney's Behind the Scenes - Cristy Maltese							Thor: The Dark World (PG-13) Duration: 1 Hour 51 Minutes													
CHARACTER	Peter Pan Dk 4, Balcony		Woody Lobby Atrium (H)		Woody Lobby Atrium (H)		Woody Lobby Atrium (H)		Mickey Dk 4, Balcony		Aladdin Preludes		Phineas & Ferb Lobby Atrium (H)		Minnie Dk 4, Balcony		Tiana Preludes				
	Jake Dk 4, Balcony		Buzz Lobby Atrium (H)		Buzz Lobby Atrium (H)		Bingo Group Lying Senses Fitness Center		Senses Spa		Pilates Senses Fitness Center		Playhouse D Lounge		Pub Quiz O'Gills Pub						
VIBE 14-17 YEARS OLD	Sun Deck Fun		ESPN Dream Team Draft Day - Baseball		Foosball Tournament		Dive into DJ'ing		Spoons		Chillin' in Vibe		Open House								
EDGE 11-14 YEARS OLD	Stop the Boat		Anyone Can Cook: Pizza		Pizza and Ice Cream Party		Youth Activities Open House		Wii Challenge												
OCEANEER LAB 3-12 YEARS OLD	Super Sloppy Science		Wacky Relay Races		Craft Time		Youth Activities Open House														
OCEANEER CLUB 3-12 YEARS OLD	Memory Wall		Relay Games		Pathfinders		Once Upon a Time		Dinner		Picture This										
	Craft Corner		Foam Block Building		Parachute Games																
Evening	7:00	7:15	7:30	7:45	8:00	8:15	8:30	8:45	9:00	9:15	9:30	9:45	10:00	10:15	10:30	10:45	11:00	11:15	11:30	11:45	12:00
FUNNEL VISION	High School Musical 2 - (TV-G) Funnel Vision							The Avengers (PG-13) Funnel Vision													
BUENA VISTA THEATRE	Thor: The Dark World (PG-13) Duration: 1 Hour 51 Minutes							Saving Mr. Banks (PG-13) Duration: 2 Hours 05 Minutes													
CHARACTER	Mickey Dk 4, Balcony		Phineas & Ferb Lobby Atrium (H)		Cinderella Preludes		Aladdin Preludes		Phineas & Ferb Lobby Atrium (H)		Donald Dk 4, Balcony		Tiana Preludes								
FUN FOR ALL AGES	Snow White Preludes		Disney Family Fusion D Lounge		Disney WISHES Walt Disney Theatre		Disney Trivia D Lounge		Disney Family Fusion D Lounge		Family Superstar Karaoke D Lounge										
	Family Dance Party The Tube		So You Think You Know Your Family? The Tube		Live Music with Daria & Roberto Lobby Atrium		Live Music Lobby Atrium														
ADULTS	Live Guitar with Tony Delaney O'Gills Pub		Pub Quiz O'Gills Pub		DJ Requests The Tube		The Quest The Tube		The Comedy & Juggling of MICHAEL HOLLY The Tube		Club DJ Mike Sincere The Tube										
VIBE 14-17 YEARS OLD	Youth Activities Open House		Pump It Up		Crowning of the Couch Potato		Gender Wars														
EDGE 11-14 YEARS OLD	Wii Challenge		ESPN Dream Team Draft Day - Football		Games & More		Picture This		GAGA Ball		Ship Factor		Gender Wars								
OCEANEER LAB 3-12 YEARS OLD	Anyone Can Cook: Cupcakes		Get the Hook		Super Sloppy Science		Magic PlayFloor														
OCEANEER CLUB 3-12 YEARS OLD	Craft Corner		Big Top Fun Fest!		Magic PlayFloor		Movie Time														
	Games & More		Pluto's Pajama Party																		

MONDAY, JANUARY 13, 2014 - DAY AT SEA

BUENA VISTA THEATRE

Deck 4 & 5, Forward

Open Captioning

DOLBY 3D

DOLBY 3D



8:30 a.m.
Duration:
1 hr 32 mins
Rating: PG



10:30 a.m.
Duration:
1 hr 43 mins
Rating: G



5:30 & 8:15 p.m.
Duration:
1 hr 51 mins
Rating: PG-13



10:30 p.m.
Duration:
2 hrs 5 mins
Rating: PG-13

Character Appearances

DAISY DUCK

Deck 4, Balcony - 9:15 a.m.

PRINCESS ANNA OF ARENDELLE

Preludes
9:15 a.m. & 10:45 a.m.

PRINCESS GATHERING

Lobby Atrium - 10:00 a.m.

PRINCESS SOFIA

Deck 4, Balcony
10:15 a.m. & 11:30 a.m.

PRINCESS MINNIE

Deck 4, Balcony - 11:00 a.m.

CHARACTER DANCE PARTY

Lobby Atrium - 12:15 p.m.

PETER PAN

Deck 4, Balcony
12:45 p.m. & 1:45 p.m.

JAKE - THE NEVERLAND PIRATE

Deck 4, Balcony
1:15 p.m. & 2:15 p.m.

BUZZ LIGHTYEAR

Lobby Atrium (V)
1:30 p.m., 3:00 p.m.
& 4:00 p.m.

WOODY

Lobby Atrium (V)
2:15 p.m., 3:30 p.m.
& 4:30 p.m.

MICKEY MOUSE

Deck 4, Balcony
4:45 p.m. & 7:15 p.m.

PLUTO

Deck 4, Balcony
5:15 p.m. & 7:45 p.m.

ALADDIN

Preludes
5:15 p.m. & 9:30 p.m.

PHINEAS & FERB

Lobby Atrium (H)
5:30 p.m., 7:45 p.m.
& 9:45 p.m.

PRINCESS TIANA

Preludes
5:45 p.m. & 10:00 p.m.

MINNIE MOUSE

Deck 4, Balcony - 5:45 p.m.

SNOW WHITE

Preludes - 7:30 p.m.

CINDERELLA

Preludes - 8:00 p.m.

STITCH

Deck 4, Balcony - 9:30 p.m.

DONALD DUCK

Deck 4, Balcony - 10:00 p.m.

(H) Hallway - (S) Starboard Side - (P) Port Side - (V) Vestibule

For details of daily Disney character appearances, refer to the character line on your Navigator Grid, or the digital character board in the Lobby Atrium.

IMPORTANT NUMBERS

Fire/Security: 7-3001
Medical Emergency: 7-3000
Health Center: 7-1923

YOUTH ACTIVITIES THEMED EXPERIENCES

CLUBHOUSE SERIES
focuses on movement and features content which appeals to younger children.

JUMP UP! SERIES
includes large group games & movement-oriented activities.

ON THE SPOTLIGHT SERIES
focuses on children's stage presence with lots of activities and enthusiasm.

STORYBOOK SERIES
is designed with a strong connection to the Disney classic stories.

CREATE & INVENT SERIES
will have a tactile focus allowing children to create and admire their work.

SOLVE IT! SERIES
are less active, but will challenge children with problems/solutions-based activities.

YOUTH ACTIVITIES OPEN HOUSE

A non-secured program with activities for families, adults and children of all ages to enjoy together.

SHIP DIRECTORY

YOUTH ACTIVITIES

DISNEY'S OCEANEER CLUB	DECK 5, MID	9:00 AM - 12:00 MID
DISNEY'S OCEANEER LAB	DECK 5, MID	9:00 AM - 12:00 MID
EDGE	DECK 13, MID	9:00 AM - 1:00 AM
VIBE	DECK 4, FWD	9:00 AM - 2:00 AM
IT'S A SMALL WORLD NURSERY	DECK 5, MID	9:00 AM - 11:30 PM

POOLS & MORE

* Children under 12 must have adult supervision in pool areas.

AQUADUCK	DECK 12, MID	9:00 AM - 11:00 PM
AQUALAB	DECK 12, AFT	10:00 AM - 6:00 PM
DONALD'S POOL	DECK 11, MID	9:00 AM - 6:00 PM
		8:00 PM - 10:00 PM
MICKEY'S POOL	DECK 11, MID	6:00 AM - 11:00 PM
MICKEY'S SLIDE	DECK 11, MID	9:00 AM - 6:00 PM
NEMO'S REEF	DECK 11, MID	9:00 AM - 6:00 PM
QUIET COVE POOL	DECK 11, FWD	6:00 AM - 12:00 MID
SATELLITE FALLS	DECK 13, FWD	6:00 AM - 8:00 PM

RECREATION

GOLF/SPORTS SIMULATORS	DECK 13, AFT	9:00 AM - 6:00 PM
GOOFY GOLF	DECK 13, AFT	8:00 AM - 10:00 PM
GOOFY'S SPORTS DECK	DECK 13, AFT	8:00 AM - 6:00 PM
MIDSHIP DETECTIVE AGENCY	DECKS 2 & 5, MID	9:00 AM - 10:00 PM
PORT ADVENTURES DESK	DECK 5, MID	9:00 AM - 5:00 PM
		7:00 PM - 8:30 PM
SENSES FITNESS CENTER	DECK 11, FWD	6:30 AM - 10:00 PM

GENERAL INFORMATION

ARR-CADE	DECK 11, AFT	24 HOURS
DISNEY VACATION CLUB	DECK 4, MID	9:00 AM - 11:00 AM
		2:30 PM - 10:00 PM
FUTURE CRUISE SALES DESK	DECK 4, MID	10:00 AM - 12:00 PM
		2:00 PM - 6:00 PM
		7:30 PM - 8:30 PM
GUEST SERVICES	DECK 3, MID	24 HOURS
MEDICAL HEALTH CENTER	DECK 1, FWD	9:30 AM - 11:00 AM
		4:30 PM - 7:00 PM
PORT & SHOPPING DESK	DECK 4, MID	10:00 AM - 11:30 AM
		7:30 PM - 8:30 PM
PRELUDES	DECK 3, FWD	2:30 PM - 3:15 PM
		5:45 PM - 6:30 PM
		8:00 PM - 8:45 PM
		10:30 PM - 11:30 PM
SENSES SPA AND SALON	DECK 11, FWD	8:00 AM - 10:00 PM
SHUTTERS PHOTO GALLERY	DECK 4, MID	10:00 AM - 11:00 PM
SHUTTERS DIGITAL	DECK 4, MID	24 HOURS

SHOPPING

BIBBIDI BOBBIDI BOUTIQUE	DECK 5, MID	9:00 AM - 9:00 PM
MICKEY'S MAINSAIL	DECK 3, FWD	9:30 AM - 11:00 PM
QUACKS	DECK 11, MID	10:00 AM - 4:00 PM
SEA TREASURES	DECK 3, FWD	9:30 AM - 11:00 PM
VISTA GALLERY	DECK 4, MID	10:00 AM - 10:00 PM
WHITECAPS	DECK 3, FWD	9:30 AM - 11:00 PM
WHOZITS & WHATZITS	DECK 11, MID	10:00 AM - 4:00 PM

DINNER MENU

Animator's Palate: Pacific Rim
Enchanted Garden: Continental Market
Royal Court: French Dinner
Dining Times: 5:45 p.m. & 8:15 p.m.

DRINK OF THE DAY

Yellow Bird (Alcoholic)
Lava Smoothie (Non Alcoholic)

WEATHER FORECAST

Monday: Partly Sunny
High: 78°F/26°C
Tuesday: Partly Sunny
High: 78°F/26°C

Evening Attire: Cruise Casual

DINING & LOUNGES

BREAKFAST

CABANAS CONTINENTAL	DECK 11, AFT	7:00 AM - 7:30 AM
CABANAS	DECK 11, AFT	7:30 AM - 11:30 AM
ENCHANTED GARDEN	DECK 2, MID	8:30 AM - 11:00 AM
ROYAL COURT	DECK 3, MID	8:00 AM - 9:30 AM

LUNCH

CABANAS	DECK 11, AFT	11:30 AM - 2:00 PM
FILMORE'S FAVORITES	DECK 11, MID	11:00 AM - 6:00 PM
LUIGI'S PIZZA	DECK 11, MID	11:00 AM - 6:00 PM
ROYAL COURT	DECK 3, MID	12:00 PM - 1:30 PM
TOW MATER'S GRILL	DECK 11, MID	11:00 AM - 11:00 PM

DINNER

ANIMATOR'S PALATE	DECK 3, AFT	5:45 PM & 8:15 PM
ENCHANTED GARDEN	DECK 2, MID	5:45 PM & 8:15 PM
ROYAL COURT	DECK 3, MID	5:45 PM & 8:15 PM
CABANAS TABLE SERVICE	DECK 11, AFT	6:30 PM - 8:30 PM
PALO (18+) (RESERVATIONS REQ. & NOW FEE APPLIES)	DECK 12, AFT	6:00 PM - 8:30 PM
REMY (18+) (RESERVATIONS REQ. & NOW FEE APPLIES)	DECK 12, AFT	6:00 PM - 8:30 PM

LATE NIGHT SNACKS

LA PIAZZA (18+)	DECK 4, AFT	10:45 PM - 11:45 PM
LUIGI'S PIZZA	DECK 11, MID	9:30 PM - 12:30 AM

ADDED FEATURES

BEVERAGE STATION	DECK 11, MID	24 HOURS
EYE SCREAM	DECK 11, MID	11:00 AM - 11:00 PM
ROOM SERVICE	DIAL 0	24 HOURS

ENTERTAINMENT - LOUNGES - BARS

Adults must be 21 and older to consume alcoholic beverages.

BON VOYAGE	DECK 3, MID	10:00 AM - 11:00 PM
COVE BAR (18+)	DECK 11, FWD	10:00 AM - 11:00 PM
COVE CAFE (18+)	DECK 11, FWD	7:00 AM - 12:00 MID
CURRENTS (18+)	DECK 13, FWD	10:00 AM - 11:00 PM
D LOUNGE	DECK 4, MID	SHOWTIMES
FROZONE TREATS	DECK 11, MID	12:00 PM - 10:00 PM
LA PIAZZA (18+ AFTER 9:00 P.M.)	DECK 4, AFT	4:00 PM - 12:00 MID
MERIDIAN (18+)	DECK 12, AFT	10:00 AM - 12:00 MID
O'GILLS PUB (18+ AFTER 9:00 P.M.)	DECK 4, AFT	12:00 PM - 12:00 MID
O.O.H.L.A. LA (18+)	DECK 4, AFT	5:30 PM - 12:00 MID
OUTLOOK	DECK 14, MID	SUNSET TIMES
SKYLINE (18+)	DECK 4, AFT	5:30 PM - 12:30 PM
THE TUBE (18+ AFTER 9:00 P.M.)	DECK 4, AFT	9:30 PM - 2:00 AM
VISTA CAFE	DECK 4, MID	7:00 AM - 11:00 PM
WAVES	DECK 12, AFT	10:00 AM - 6:00 PM

Consumers who order raw or partially cooked, ready-to-eat food of animal origin, are hereby informed that the food is not sufficiently cooked to ensure its safety.

GOOFY'S SPORTS Digital Simulators



Sports Simulator

(Basketball, Baseball, Hockey, Football or Soccer) \$12 / half hr, \$20 / hr

Golf Simulator

\$25 / half hr, \$45 / hr.

Reservations can be made at the Port Adventures Desk, Deck 5, Midship or at the Simulators, Deck 13, Aft