

PERSONAL NAVIGATOR

WEDNESDAY, JANUARY 1, 2014

Sunrise 7:01 a.m. Sunset: 5:35 p.m.
Evening Attire: Cruise Casual

Wednesday: Sunny High: 75°F/24°C
Thursday: Chance of Rain High: 75°F/24°C

DAY AT SEA

Disney's Believe

Genie from Aladdin and many of Disney's most beloved magic makers take a father on a magical journey to show him that anything is possible if you just believe.

WALT DISNEY THEATRE
Deck 3 & 4, Forward
6:15 P.M. & 8:30 P.M.

As a courtesy to all Guests, we kindly advise that the saving of seats is **not** permitted in the Walt Disney Theatre.



Assistance available at the entrance to the Walt Disney Theatre 30 minutes prior to show time.



Disney Fun Facts

Tonnage: 129,690

Height: 66.13 m (217 feet)

Length: 339.8 m (1114.7 feet)

Important Dates

Name Announcement: March 2009

Steel Cutting: March 2009

Keel Laying: August 2009

Delivery: December 2010

Did you know?

The Sorcerer Mickey Mouse on the Disney Dream's stern is about 14 feet long. Constructed of stainless steel and fiberglass, it weighs approximately 2,500 pounds.

SEA YA' REAL SOON!

Mickey and some of his Disney friends, invite you to join them in the ship's Atrium. You won't want to miss this very special farewell meet and greet.

Bring your cameras!

10:15 p.m.
Lobby Atrium,
Deck 3, Midship

HAPPY 2014 NEW YEAR

Making of the Dream

Evolution, Deck 4, Aft - 9:30 a.m.

Explore the origins of Disney Cruise Line and the latest and greatest innovations conjured especially for the Disney Dream in this fascinating and entertaining behind-the-scenes program.

Captain's Signing

Whitecaps, Deck 3, Forward - 12:15 p.m.

Meet the Master of the Disney Dream and have your cruise memories signed.

Movie Special: Frozen - (PG)

Walt Disney Theatre, Deck 3 & 4, Forward - 1:45 p.m.

Author P.L. Travers travels from London to Hollywood in 1961 to discuss Disney's desire to bring her beloved character, Mary Poppins, to the motion picture screen.

Debarb Talk Broadcast

Your Cruise Director, Lesley, presents important information, including U.S. Customs and Border Protection procedures. Tune in to Channel 5 of your stateroom TV. Please place your luggage outside your stateroom between 8:30 p.m. - 10:30 p.m.

Thank you in advance for completing your comment card.



Visit The Future Cruise Desk Early Today

Please visit the Future Cruise Desk, Deck 4, Midship, as early as possible today. The last day of the cruise tends to get busy in the evening, and we want to be sure you have the opportunity to save 10% on your next cruise, receive up to a \$200 onboard credit, and pay a reduced deposit!

DINNER MENU

Animator's Palate: Pacific Rim Crusine
Enchanted Garden: Continental Market
Royal Palace: French Dinner

DRINK OF THE DAY

Golden Start (Alcoholic)
Mango Smoothie (Non Alcoholic)

IMPORTANT NUMBERS

Fire/Security: 7-3001
Medical Emergency: 7-3000
Health Center: 7-1923

FUN FOR ALL AGES HIGHLIGHTS

MAKING OF THE DREAM

Evolution, Deck 4, Aft - 9:30 a.m.

Explore the origins of Disney Cruise Line and the latest and greatest innovations conjured especially for the Disney Dream in this fascinating and entertaining behind-the-scenes program.

WAKE UP WITH DISNEY JUNIOR

D Lounge, Deck 4, Midship - 9:30 a.m.

What happens when you experience unlimited fun with your favorite Disney Junior shows? You get an exciting dance party designed especially for preschoolers ages seven and under.

DISNEY VACATION CLUB GROUP PREVIEW

Evolution, Deck 4, Aft - 11:30 a.m.

Want to learn more about taking magical vacations year after year? Please see a Disney Vacation Club representative on Deck 4, Midship, or call 7-2805 from your stateroom phone for more information about our interactive group presentation.

DISNEY ANIMATION: CREATING A CHARACTER

D Lounge, Deck 4, Midship - 1:15 p.m.

Go behind the scenes at Walt Disney Animation Studios as Walt Disney himself talks about his most famous characters, then learn the basic techniques of drawing Mickey and Donald in this fun and interesting enrichment program.

ANIMAL TOWEL FOLDING

D Lounge, Deck 4, Midship - 2:00 p.m.

Learn to create those amazing towel creatures you've seen in your stateroom all cruise long.

MICKEY 200

Evolution, Deck 4, Aft - 3:00 p.m.

Don't eat your vegetables... race them in this wild and wacky charge to the finish line. May the best veggie win! (Limited Availability)

OFFICER PIN TRADING

Preludes, Deck 3, Forward - 7:30 p.m.

Come trade pins with the officers of the Disney Dream.

DREAM QUEST

Evolution, Deck 4, Aft - 7:30 p.m.

Enjoy the wildest and wackiest scavenger team event on the seven seas!

ADULT ACTIVITY HIGHLIGHTS

SENSES SPA FITNESS CLASSES & SEMINARS

Body Sculpt Boot Camp - Goofy's Sports Deck - 8:00 a.m.

Wake Up & Stretch Class - Senses Fitness Center - 9:00 a.m.

Group Cycling - Senses Fitness Center - 10:00 a.m.

Seminar: New Look, New You - Senses Fitness Center - 11:00 a.m.

Secrets To A Flatter Stomach - Senses Fitness Center - 12:00 p.m.

Detox for Health & Weight Loss - Senses Fitness Center - 1:30 p.m.

Good Feet: Walking In Comfort - Senses Fitness Center - 3:30 p.m.

Yoga - Senses Fitness Center - 5:00 p.m.



TASTING CLASSES

Chocolate & Liquor Tasting (21+) - Pink (Pre Book, Nom. Fee) - 12:15 p.m.

Wine Tasting (21+) - Pink (Pre Book, Nom. Fee) - 1:30 p.m.

Martini Tasting (21+) - Meridian (Pre Book, Nom. Fee) - 2:00 p.m. & 4:00 p.m.

Mixology (21+) - Skyline (Pre Book, Nom. Fee) - 2:00 p.m. & 4:00 p.m.

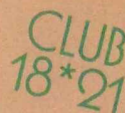
Tequila & Margarita Tasting (21+) - 687 Pub (Pre Book, Nom. Fee) - 3:30 p.m.

Please make reservations for tastings at Guest Services for a nominal fee.

Tasting Seminars are only for Guests 21 and Older.

CLUB 18*21 - LUNCH

Royal Palace, Deck 3, Midship - 12:30 p.m.



CLUB 18*21 - JENGA CHALLENGE

687 Pub, Deck 4, Aft - 5:00 p.m.

CLUB 18*21 - FAREWELL

Evolution, Deck 4, Aft - 10:15 p.m.

ART OF THE THEME SHOW TOUR

Meet at Meridian, Deck 12, Aft - 9:30 a.m.

Join us on a guided ship tour and discover the key ingredients that make the Disney Dream cruise ship one-of-a-kind.

ANYONE CAN COOK - LOBSTER RAVIOLI

D Lounge, Deck 4, Midship - 3:00 p.m.

From our galley to yours. Join our chefs as they show you how to prepare delicious dishes. Today's Menu - Lobster Ravioli

80'S MUSIC CHALLENGE

Evolution, Deck 4, Aft - 10:15 p.m.

"Moon Walk" back to the 80's as we put your musical knowledge of the decade to the test.

PULSE FEAT. DJ MARIUS

Evolution, Deck 4, Aft - 11:15 p.m.

Dance the night away as DJ Marius spins all the latest mixes from today with some 90's classics thrown in for you to get down!

\$5,000 FINAL MEGA JACKPOT BINGO



D Lounge, Deck 4, Midship

Card Sales - 10:00 a.m.

Game Starts - 10:30 a.m.

Join us for four cash prize games. If you cover your card in 46 numbers or less on the final game, \$5,000 could be yours! If not, we will still be playing for the HIGHEST cash prize of the cruise.

FINAL JACKPOT BINGO

D Lounge, Deck 4, Midship

Card Sales - 3:45 p.m.

Game Starts - 4:15 p.m.

The snowball jackpot MUST BE WON at this final session! Beat the line and get your cards early. Who will be the lucky winner? It could be you!



YOUTH ACTIVITIES HIGHLIGHTS

Dine & Play

A convenience for families dining at 8:15 p.m., our Youth Activities Counselors will be available at 9:15 p.m. at the entrance of Royal Palace, Enchanted Garden and Animator's Palate dining rooms to bring registered children to join the fun in the Youth Activity areas.



Deck 5 Midship (7-5864) 9:00 a.m. - 12:00 mid

OPEN HOUSE

8:00 a.m. - 9:00 a.m.

Your chance to see our toddler space, It's A Small World Nursery.



Deck 5, Midship (7-1440) 10:00 a.m. - 12:00 mid
(3 - 12 years old)

TINKER BELL'S TALENT SHOW

2:00 p.m. & 10:30 p.m.

Tinker Bell has come from Pixie Hollow to Disney Cruise Line to help young cruisers discover their Fairy Talents.

ALOHA LUAU

3:00 p.m.

It's party time, Hawaiian style! Come join us for a Luau experience and learn how to dance like Lilo & Stitch.



Deck 5, Midship (7-1445) 9:00 a.m. - 12:00 mid
(3 - 12 years old)

STITCH'S ADVENTURE SQUAD

11:15 a.m. & 7:45 p.m.

Stitch, everyone's favorite alien, is making an appearance to share some of his mischievous games and activities.

ANYONE CAN COOK

2:30 p.m.

Anyone can cook as we work together to create some of our favorite treats.



Deck 13, Midship (7-9743) 10:00 a.m. - 12:00 mid
(11 - 14 years old)

SUPER SLOPPY SCIENCE

11:30 a.m.

Join Professor Make-O-Mess in some of the most extreme experiments you will ever see in the world of Super Sloppy Science!

GHOST VOYAGERS

9:00 p.m.

The ship has come upon some mysterious waters and strange things are afoot. Join a paranormal expert to help investigate the area and track down any evidence of ghostly beings on the ship.



Entrance on Deck 4, Forward (7-9417)
(14 - 17 years old)

11:00 a.m. - 1:00 a.m.

DJ TRAINING

2:00 p.m.

Mix it up as you learn the tricks of the trade from our teen counselor DJ's.

ZOMBIFIED PREMIERE

11:00 p.m.

One time only! Come join us in the Buena Vista Theatre for this exclusive big screen premiere of "Zombified," a film featuring the Teens of Vibe as the cast!

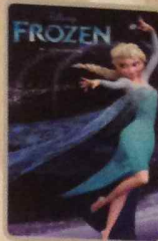
BUENA VISTA THEATRE

Today's Movies

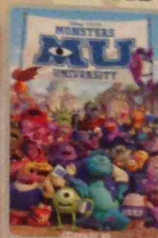
CC - Open Captioning

DOLBY 3D

DOLBY 3D



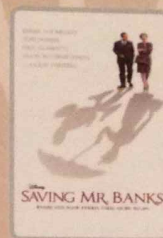
8:00 a.m.
Duration:
1 hr 48 mins
Rating: PG



10:15 a.m.
Duration:
1 hr 43 mins
Rating: G



12:45 p.m.
Duration:
1 hr 48 mins
Rating: PG



3:00 p.m. & 10:45 p.m.
Duration: 2 hrs 5 mins
Rating: PG-13

DOLBY 3D



5:30 p.m. & 8:15 p.m.
Duration: 1 hr 51 mins
Rating: PG-13

FAMILY KARAOKE



Be a singing sensation when you and your family take to the stage and sing along to your favorite song.

D Lounge,
Deck 4, Midship,
7:30 p.m. & 10:15 p.m.



ADULT VARIETY ACT

Repeat Show
Featuring the Comedy & Ventriloquism of Lynn Trefzger, as she entertains the entire family in this fun-filled show.
Evolution (18+),
Deck 4, Aft,
10:45 p.m.

YOUTH ACTIVITIES OPEN HOUSE

Open House is an opportunity for all to come and participate in a variety of exciting activities and free time in It's A Small World Nursery, the Oceaneer Club, Oceaneer Lab, Edge and Vibe throughout the cruise. During these times secured programming will still be offered in the other venues for those looking to check their children into care.

It's a Small World Nursery: 8:00 a.m. - 9:00 a.m.
Disney's Oceaneer Club: 9:00 a.m. - 10:00 a.m.
Vibe: 10:00 a.m. - 11:00 a.m.
Edge: 9:00 a.m. - 10:00 a.m.

MORE TO ENJOY WHILE ONBOARD

MORE MAGIC IN THE MEDITERRANEAN

Set sail for Europe in summer 2014! Choose from an array of Mediterranean getaways departing from Barcelona or Venice, including a 12-night cruise that sails to the Greek Isles, Turkey and Malta. Begin your journey today! Visit the Future Cruise Sales Desk to learn more about our special onboard booking offer.

STAY CONNECTED WITH CELLULAR SERVICE

Cell phone and wireless PDA service is available in guest staterooms through most plans. Pricing varies depending upon your wireless provider and usually includes International roaming rates.

DISNEY VACATION CLUB® GROUP PREVIEW

Want to learn more about taking magical vacations year after year? Please see a Disney Vacation Club representative on Deck 4, Midship, or call 7-2805 from your stateroom phone for more information about our interactive group presentation.



SALON TASTER SPECIAL

Choose from scalp massage, European facial, hand treatment, sunglow make-over, hair treatment, eye-collagen treatment, foot and ankle massage and neck and shoulder massage.

Three for \$99, five for \$119, and eight for \$139.

Senses Spa & Salon, Deck 11, Forward, Ext. 7-1465

DREAM OF DIAMONDS

... and awake in Whitecaps where you will be convinced once and for all that dreams really do come true. Provenance Gems presents a collection of exotic colors set in gold. Experience the sparkle while you can, available here on the Disney Dream.

WHITECAPS

Deck 3, Forward



PROFESSIONAL PORTRAITS TONIGHT!

Grand Staircase & Tree – Groups Accommodated

5:15 p.m. - 6:00 p.m.

7:15 p.m. - 8:30 p.m.

Create a personal storybook of your cruise to share with family and friends.

Photobook orders close at 10:00 p.m.

EXPRESS WALK-OFF

This option allows you to take your luggage off the ship at your leisure once the ship has been cleared by the local authorities. You won't need to wait for your luggage to enter the terminal and there is no need to claim it inside the terminal building. Please note that no assistance with luggage is provided for this option.

MIDSHIP DETECTIVE AGENCY

Use your detective know-how and our special detective "badge" to search the ship and catch your criminal! Deck 5, Midship Kiosks.

WIRELESS INTERNET: KEEPING YOU CONNECTED AT SEA

\$0.75 per minute, or save money by buying blocks of time. \$27.50 for 50 minutes, \$40 for 100 minutes and \$75 for 250 minutes.

Wireless information sheets are available at Guest Services, Deck 3, Midship. **Please note: Due to satellite connectivity, onboard internet service will be noticeably slower than you may be accustomed to and may at times be interrupted or unavailable.**

FREE ON DEMAND TV

Watch Disney movies, Hollywood features, and even captioned content, plus much more "On Demand" for FREE in the comfort of your stateroom! Bookmark your movie and come back to watch it later. Press MENU on your stateroom television remote control and follow the prompts.

SHOPPING

UNIQUE SEA BAGS MADE FROM RECYCLED SAILS

Crafted in Portland, Maine, from real sails collected from sailing communities all over the world, breathing new life into recently retired sails, our totes embody the magic of the sea and bring to every Sea Bags owner a bit of the mystery surrounding the specific sail used in the making of their tote. Visit Whitecaps today to view the entire collection. Deck 3, Forward.

GOING ONCE, GOING TWICE, YOURS!

The silent auction will close tonight at 5:00 p.m. Make sure you come place a bid on your favorite pieces. Also own a piece of the Disney Dream with an artistic rendering of a Disney character painted on a Mickey head carved from actual ship metal. Vista Gallery, Deck 4, Midship.

2014 IS LOOKING GOOD!

Welcome the New Year in style with fashionable brand name accessories such as Dooney & Bourke handbags and Gucci sunglasses, all available in Whitecaps. Deck 3, Forward.

TAX AND DUTY FREE HIGHLIGHT

Any liquor purchases you have made throughout the voyage will be delivered to your stateroom today, packaged safely for your journey home. Experience the fragrances, jewelry, and liquors we have onboard at excellent duty free prices tonight as we will not be open in Port Canaveral. Satisfy your sweet tooth with our selection of Godiva chocolate. Whitecaps, Deck 3, Forward.

CAPTAIN'S SIGNING

Come to Whitecaps at 12:15 p.m. to have your Disney Dream merchandise signed by the Master of the Disney Dream, Captain Henry. Stunning replica ships are available in Sea Treasures, Deck 3, Forward. Beautiful Disney Cruise Line® prints are available in the Vista Gallery, Deck 4, Midship.

POOLSIDE SHOPPING

Located right by the pool, Whozits & Whatzits has everything you will need from sunscreen to sunglasses and towels to tees. The official home of Aquaduck merchandise, visit Whozits & Whatzits, Deck 11, Midship.

IMPORTANT INFORMATION

Security Notice

All Guests (including children) who wish to disembark the ship are required to present their Key to the World card at the gangway. A photo ID is also required for those Guests who are 18 years of age or older. Guests under the age of 18 are required to have a parent, guardian or other responsible adult sign an authorization form at the Guest Service Desk if they wish to go ashore unaccompanied or with any adult from another stateroom.

Cold and Flu Reminder

Please wash hands frequently and thoroughly, particularly before meals. Contact the Health Center by dialing 7-1923, should anyone in your party become ill.

Corridor Quiet Hours

As a courtesy to all our Guests, please recognize quiet hallway hours from 10:00 p.m. till 8:00 a.m.

Inclement Weather

For the safety of all Guests, outdoor events may be changed due to unforeseen weather conditions.

Environmental Message

With Disney's commitment to the environment, please refrain from throwing anything over the ship's side. Thank you!

No Reserved Seats Policy

As a courtesy to all our Guests, we kindly advise that the saving of seats is not permitted in the Walt Disney Theatre, and the saving of the sun loungers is not permitted on Deck 11, 12 and 13. Items left unattended will be returned to lost and found at Guest Services, Deck 3, Midship.

Smoking

For the comfort of our guests the following areas are designated as Smoking areas:

- Deck 13, Forward, port side, by "Currents"
- Deck 12, Aft, port side outdoor area that is accessible through the Meridian Lounge
- Deck 4, Aft, port side from 6:00 p.m. to 6:00 a.m. only (all of Deck 4 is no smoking from 6:00 a.m. to 6:00 p.m.)

Smoking is prohibited inside all guest staterooms and on stateroom verandahs. Guests found smoking in their staterooms or on their verandahs will be charged a \$250 stateroom recovery fee. Electronic cigarettes may only be used in designated smoking areas.

Walt Disney Theatre

Theatrical performances may use artificial strobe lights, pyrotechnics and other special effects. For the safety of our performers and the comfort of those around you, the use of photography, video recording devices or any electronic equipment is prohibited.

Verandah Safety

Please do not leave any combustible material on your balcony when not present in your stateroom for safety reasons.

Morning	8:30	8:45	9:00	9:15	9:30	9:45	10:00	10:15	10:30	10:45	11:00	11:15	11:30	11:45	12:00	12:15	12:30	12:45	1:00	1:15	1:30					
FUNNEL VISION	Tinker Bell (G) ←Starts 8:00 a.m. Funnel Vision				Mary Poppins (G) Funnel Vision												Disney Movie Challenge Poolside Funnel Vision									
BUENA VISTA THEATRE	Frozen (PG) ← Starts 8:00 a.m. Duration: 1 Hour 48 Minutes				Monsters University (G) Duration: 1 Hour 43 Minutes								Frozen (PG) Duration: 1 Hour 48 Minutes													
CHARACTER					Princess Gathering Lobby Atrium				Princess Minnie Deck 4, Balcony				Donald Duck Preludes				Character Dance Party Lobby Atrium									
FUN FOR ALL AGES	Morning Walk Deck 4, Port Side		Coloring Time D Lounge		Disney Junior D Lounge		Bingo Pre Sales		\$5,000 Final Mega Jackpot BINGO D Lounge		Disney Junior Lobby Atrium		Captain's Signing Whitings				Disney Animation D Lounge									
	Open House It's A Small World Nursery ← Starts at 8:00 a.m.		Little Einstein's Adventure Disney's Oceaneer Club		Making of the Dream Evolution		Basketball Shootout Goofy's Sports Deck				Disney Vacation Club Group Preview Evolution		Midship Detective Agency Deck 5, Midship													
ADULTS	Friends of Bill W. Outlook				Art of The Theme Show Tour Meet at Meridian				Youth Activities Open House Vibe 10:00 a.m. - 11:00 a.m.				Pub Quiz 687 Pub		Singles' Lunch Royal Palace		NCAA Football: Hawks vs. Tiger 687 Pub (Subject to Satellite Availability)									
VIBE 14-17 YEARS OLD					Wake Up & Stretch Class Senses Fitness Center				Group Cycling Senses Fitness Center		New Look, New You Senses Fitness Center		Secrets To A Flatter Stomach Senses Fitness Center		Club 18*21 - Lunch Royal Palace											
EDGE 11-14 YEARS OLD					Youth Activities Open House				Open for Tweens		Bingo		Super Sloppy Science				Ice Cream Social									
OCEANEER LAB 3-12 YEARS OLD					Animation Antics				Super Sloppy Science				Stitch's Adventure Squad				Lunch		Get the Hook							
OCEANEER CLUB 3-12 YEARS OLD					Youth Activities Open House				Mickey's Puzzle Playtime		Toy Story Boot Camp		Picture This				Lunch		Heffalump Hunting							
				Little Einstein's Adventure																						
Afternoon	1:45	2:00	2:15	2:30	2:45	3:00	3:15	3:30	3:45	4:00	4:15	4:30	4:45	5:00	5:15	5:30	5:45	6:00	6:15	6:30	6:45					
FUNNEL VISION									The Jungle Book (G) Funnel Vision								Fantasia Funnel Vision									
BUENA VISTA THEATRE					Saving Mr. Banks (PG-13) Duration: 2 Hours 5 Minutes								Thor: The Dark World (PG-13) Duration: 1 Hour 51 Minutes													
CHARACTER					Mickey & Pluto Deck 4, Balcony								Mickey Mouse Deck 4, Balcony				Pluto Preludes				Goofy Preludes					
FUN FOR ALL AGES	FROZEN (PG) 1 Hour 48 Minutes Walt Disney Theatre				Bingo Pre Sales				Final Jackpot BINGO D Lounge				Live Music with The Dreamers Lobby Atrium				Live Music with Tom Scott District Lounge				Disney Trivia D Lounge					
	Towel Folding D Lounge				Mickey 2011 Evolution (limited availability)				Live Music with Matt Bruno Deck 12, Forward												Walt Disney Theatre					
ADULTS	Making of the Dream Evolution				Anyone Can Cook D Lounge				Tequila & Margarita Tasting (21+) 687 Pub (Pre Book, Nom. Fee)				Mixology (21+) Skyline (Pre Book, Nom. Fee)				Club 18*21 - Jenga Challenge 687 Pub				XBox® Kinect™ Challenge 687 Pub					
VIBE 14-17 YEARS OLD	Zombified				DJ Training				Dream Factor				Sun Deck Fun								Sports Deck Fun					
EDGE 11-14 YEARS OLD					Dream Factor				Scavenger Hunt				Stop The Boat				Sports Deck Fun				Art Work					
OCEANEER LAB 3-12 YEARS OLD					Anyone Can Cook				Pirates of the Caribbean: Tides of Fortune				Super Sloppy Science								Dinner		Monster's Inc: Open "Mike" Night			
OCEANEER CLUB 3-12 YEARS OLD					Tinker Bell's Talent Show				Aloha Luau				Cruisin' with Crush				Once Upon a Time				Dinner		Magic PlayFloor			
Evening	7:00	7:15	7:30	7:45	8:00	8:15	8:30	8:45	9:00	9:15	9:30	9:45	10:00	10:15	10:30	10:45	11:00	11:15	11:30	11:45	12:00					
FUNNEL VISION	Cinderella (G) Funnel Vision								The Princess and the Frog (G) Funnel Vision								Cars (G) Funnel Vision									
BUENA VISTA THEATRE					Thor: The Dark World (PG-13) Duration: 1 Hour 51 Minutes												Saving Mr. Banks (PG-13) Duration: 2 Hours 5 Minutes									
CHARACTER					Mickey Mouse Deck 4, Balcony												SEA ON BEACH Lobby Atrium									
FUN FOR ALL AGES					Minnie Mouse Lobby Atrium (V)				Officer Pin Trading Preludes				Disney Junior Walt Disney Theatre				Family Fusion D Lounge				Live Music with Tom Scott Lobby Atrium					
					Dream Quest Evolution				Family Superstar Karaoke D Lounge				Disney Trivia D Lounge				Live Music with The Dreamers Lobby Atrium				Family Superstar Karaoke D Lounge					
ADULTS	90's Music Trivia 687 Pub				NCAA Football: UCF Knights vs. Baylor Bears 687 Pub (Subject to Satellite Availability)				Live Music with Tom Scott District Lounge				80's Music Challenge Evolution				Adult Variety: Lynn Tretzger Evolution				DJ Marius Evolution					
VIBE 14-17 YEARS OLD					Youth Activities Open House				Pump It Up				Bring It!				Zombified Premiere									
EDGE 11-14 YEARS OLD					Karaoke				Ghost Voyagers				Gender Wars				Farewell Dance Party									
OCEANEER LAB 3-12 YEARS OLD	Magic PlayFloor				Stitch's Adventure Squad				Piston Cup Challenge				Super Sloppy Science				Magic PlayFloor				GAGA Ball					
OCEANEER CLUB 3-12 YEARS OLD					Big Top Fun Fest!				Pluto's Pajama Party				Parachute Games				Tinker Bell's Talent Show									

WEDNESDAY, JANUARY 1, 2014 - DAY AT SEA

BUENA VISTA THEATRE



8:00 a.m. Duration: 1 hr 48 mins Rating: PG
 10:15 a.m. Duration: 1 hr 43 mins Rating: G
 12:45 p.m. Duration: 1 hr 48 mins Rating: PG
 3:00 p.m. & 5:30 p.m. & 8:15 p.m. Duration: 2 hrs 5 mins Rating: PG-13
 5:30 p.m. & 8:15 p.m. Duration: 1 hr 51 mins Rating: PG-13

Character Appearances

PRINCESS GATHERING
Lobby Atrium - 9:00 a.m.

PRINCESS ANNA OF ARENDELLE
Preludes - 9:30 a.m.

TINKER BELL
Lobby Atrium (V) - 9:30 a.m.

PRINCESS MINNIE
Deck 4, Balcony - 9:30 a.m.

DONALD DUCK
Preludes - 10:30 a.m.

CHARACTER DANCE PARTY
Lobby Atrium - 12:15 p.m.

MICKEY & PLUTO
Deck 4, Balcony - 2:15 p.m.

GOOFY & MAX
Lobby Atrium (P) - 2:15 p.m.

CHIP & DALE
Lobby Atrium (S) - 2:30 p.m.

PLUTO
Preludes - 5:15 p.m.

MICKEY MOUSE
Deck 4, Balcony - 5:15 p.m. & 7:30 p.m.

GOOFY
Preludes - 5:45 p.m.

MINNIE MOUSE
Lobby Atrium (V) - 7:30 p.m.

DISNEY PRINCESSES
D Lounge - 7:30 p.m.

SEA YA REAL SOON
Lobby Atrium - 10:15 p.m.



YOUTH ACTIVITIES THEMED EXPERIENCES

CLUBHOUSE SERIES
focuses on movement and features content which appeals to younger children.

STORYBOOK SERIES
is designed with a strong connection to the Disney classic stories.

JUMP UP! SERIES
includes large group games & movement-oriented activities.

CREATE & INVENT SERIES
will have a tactile focus allowing children to create and admire their work.

OPEN HOUSE

activities for families, adults and children of all ages to enjoy together.

ON THE SPOTLIGHT SERIES
focuses on children's stage presence with lots of activities and enthusiasm.

WALK IT SERIES
are less active, but will challenge children with problem/solutions-based activities.

SHIP DIRECTORY

YOUTH ACTIVITIES		
DISNEY'S OCEANEER CLUB	DECK 5, MID	10:00 AM - 12:00 MID
DISNEY'S OCEANEER LAB	DECK 5, MID	9:00 AM - 12:00 MID
EDGE	DECK 13, MID	10:00 AM - 12:00 MID
VIBE	DECK 4, FWD	11:00 AM - 1:00 AM
IT'S A SMALL WORLD NURSERY	DECK 5, MID	9:00 AM - 12:00 MID

POOLS & MORE

* Children under 12 must have adult supervision in pool areas.

AQUADUCK	DECK 12, MID	9:00 AM - 11:00 PM
DONALD'S POOL	DECK 11, MID	9:00 AM - 6:00 PM
		8:00 PM - 10:00 PM
MICKEY'S POOL	DECK 11, MID	6:00 AM - 12:00 MID
MICKEY'S SLIDE	DECK 11, MID	9:00 AM - 6:00 PM
NEMO'S REEF	DECK 11, MID	9:00 AM - 6:00 PM
QUIET COVE POOL	DECK 11, FWD	6:00 AM - 12:00 MID

RECREATION

GOLF/SPORTS SIMULATORS	DECK 13, AFT	9:00 AM - 6:00 PM
GOOFY GOLF	DECK 13, AFT	8:00 AM - 10:00 PM
GOOFY'S SPORTS DECK	DECK 13, AFT	8:00 AM - 6:00 PM
MIDSHIP DETECTIVE AGENCY	DECK 5, MID	8:00 AM - 11:00 PM
PORT ADVENTURES DESK	DECK 5, MID	
SENSES FITNESS CENTER	DECK 11, FWD	6:00 AM - 10:00 PM

GENERAL INFORMATION

ARR-CADE	DECK 11, AFT	24 HOURS
BUENA VISTA THEATRE	DECK 4 & 5, MID	SHOWTIMES
DISNEY VACATION CLUB	DECK 4, MID	9:00 AM - 11:00 AM 1:30 PM - 10:00 PM
FUTURE CRUISE SALES DESK	DECK 4, MID	9:00 AM - 12:00 PM 2:30 PM - 10:30 PM
GUEST SERVICES	DECK 3, MID	24 HOURS
HAIRBRAIDING	DECK 11, MID	8:00 AM - 9:30 PM
MEDICAL HEALTH CENTER	DECK 1, FWD	9:30 AM - 11:00 AM 4:30 PM - 7:00 PM
PORT & SHOPPING DESK	DECK 4, MID	
PRELUDES	DECK 3, FWD	5:45 PM - 6:30 PM 8:00 PM - 8:45 PM
SENSES SPA AND SALON	DECK 11, FWD	8:00 AM - 10:00 PM
SHUTTERS PHOTO GALLERY	DECK 4, MID	10:00 AM - 11:00 PM
WALT DISNEY THEATRE	DECK 3 & 4, FWD	SHOWTIMES

SHOPPING

MICKEY'S MAINSAIL	DECK 3, FWD	9:00 AM - 11:30 PM
SEA TREASURES	DECK 3, FWD	9:00 AM - 11:30 PM
QUACKS	DECK 11, MID	10:00 AM - 3:00 PM
VISTA GALLERY	DECK 4, MID	10:00 AM - 11:00 PM
WHITECAPS	DECK 3, FWD	9:00 AM - 11:30 PM
WHOZITS & WHATZITS	DECK 11, MID	10:15 AM - 4:00 PM 7:00 PM - 10:00 PM

IMPORTANT NUMBERS

Fire/Security: 7-3001
 Medical Emergency: 7-3000
 Health Center: 7-1923

DINNER MENU

Animator's Palate: Pacific Rim Cuisine
 Enchanted Garden: Continental Market Cuisine
 Royal Palace: French Dinner
 Dining Times: 5:45 p.m. & 8:15 p.m.

DRINK OF THE DAY

Golden Start (Alcoholic)
 Mango Smoothie (Non Alcoholic)

WEATHER FORECAST

Wednesday: Sunny High: 75°F/24°C
 Thursday: Chance of Rain High: 75°F/24°C

DINING & LOUNGES

BREAKFAST

CABANAS CONTINENTAL	DECK 11, AFT	7:00 AM - 7:30 AM
CABANAS	DECK 11, AFT	7:30 AM - 11:30 AM
ENCHANTED GARDEN	DECK 2, MID	9:00 AM - 10:45 AM
ROYAL PALACE	DECK 3, MID	8:00 AM - 9:30 AM

LUNCH

CABANAS	DECK 11, AFT	12:00 PM - 2:00 PM
ENCHANTED GARDEN	DECK 2, MID	12:00 PM - 1:30 PM
FILLMORE'S FAVORITES	DECK 11, MID	11:00 AM - 6:00 PM
LUIGI'S PIZZA	DECK 11, MID	11:00 AM - 6:00 PM
ROYAL PALACE	DECK 3, MID	12:00 PM - 1:30 PM
TOW MATER'S GRILL	DECK 11, MID	11:00 AM - 6:00 PM

DINNER

ANIMATOR'S PALATE	DECK 3, AFT	5:45 PM & 8:15 PM
ENCHANTED GARDEN	DECK 2, MID	5:45 PM & 8:15 PM
ROYAL PALACE	DECK 3, MID	5:45 PM & 8:15 PM
PALO & REMY	DECK 12, AFT	6:00 PM - 9:00 PM
(RESERVATIONS REQUIRED & COVER CHARGE APPLICABLE, DIAL #7-9734)		
TOW MATER'S GRILL	DECK 11, MID	6:00 PM - 11:00 PM

LATE NIGHT SNACKS

LUIGI'S PIZZA	DECK 11, MID	9:30 PM - 12:00 MID
---------------	--------------	---------------------

ADDED FEATURES

BEVERAGE STATION	DECK 11, MID	24 HOURS
EYE SCREAM	DECK 11, MID	11:00 AM - 12:00 MID
ROOM SERVICE	DIAL 0	CLOSES AT 1:30 AM

ENTERTAINMENT - LOUNGES - BARS

Adults must be 21 and older to consume alcoholic beverages.

687 PUB (18+ AFTER 9:00 PM)	DECK 4, AFT	11:00 AM - 12:30 AM
BON VOYAGE	DECK 3, MID	9:00 AM - 11:00 PM
COVE BAR (18+)	DECK 11, FWD	9:30 AM - 10:30 PM
COVE CAFE (18+)	DECK 11, FWD	7:00 AM - 12:00 MID
CURRENTS (18+)	DECK 13, FWD	10:00 AM - 11:00 PM
D LOUNGE	DECK 4, MID	SHOWTIMES
DISTRICT LOUNGE (18+ AFTER 9:00 PM)	DECK 4, AFT	10:30 AM - 12:00 MID
EVOLUTION (18+)	DECK 4, AFT	9:30 PM - 2:00 AM
FROZONE TREATS	DECK 11, MID	11:00 AM - 11:00 PM
MERIDIAN (18+)	DECK 12, AFT	5:00 PM - 12:00 MID
OUTLOOK	DECK 14, MID	SUNSET TIMES
PINK (18+)	DECK 4, AFT	5:00 PM - 12:00 MID
SKYLINE (18+)	DECK 4, AFT	5:00 PM - 12:00 MID
VISTA CAFE	DECK 4, MID	7:30 AM - 11:00 PM
WAVES	DECK 12, AFT	10:00 AM - 7:00 PM

Consumers who order raw or partially cooked, ready-to-eat food of animal origin, are hereby informed that the food is not sufficiently cooked to ensure its safety.

PRINCESS GATHERING

Don't miss your chance to see this Royal gathering today in the Lobby Atrium.
 9:00 a.m.

CHARACTER DANCE PARTY

Put your dancing shoes on and join some of your favorite Disney Friends in the Lobby Atrium, Deck 3, Midship for fun and dancing.
 12:15 p.m.



(H) Hallway - (S) Starboard Side - (P) Port Side - (V) Vestibule
 For details of daily Disney character appearances, refer to the character line on the Navigator Grid, or the digital character board in the Lobby Atrium.