

PERSONAL NAVIGATOR



TUESDAY, DECEMBER 31, 2013

Sunrise: 6:56 a.m. Sunset: 5:29 p.m.

Evening Attire: Optional Dress Up

All Ashore: 8:30 a.m.

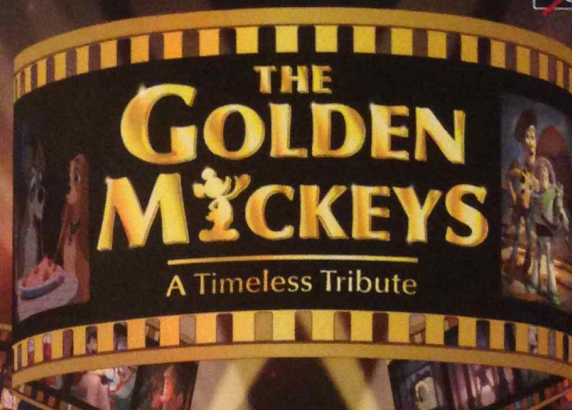
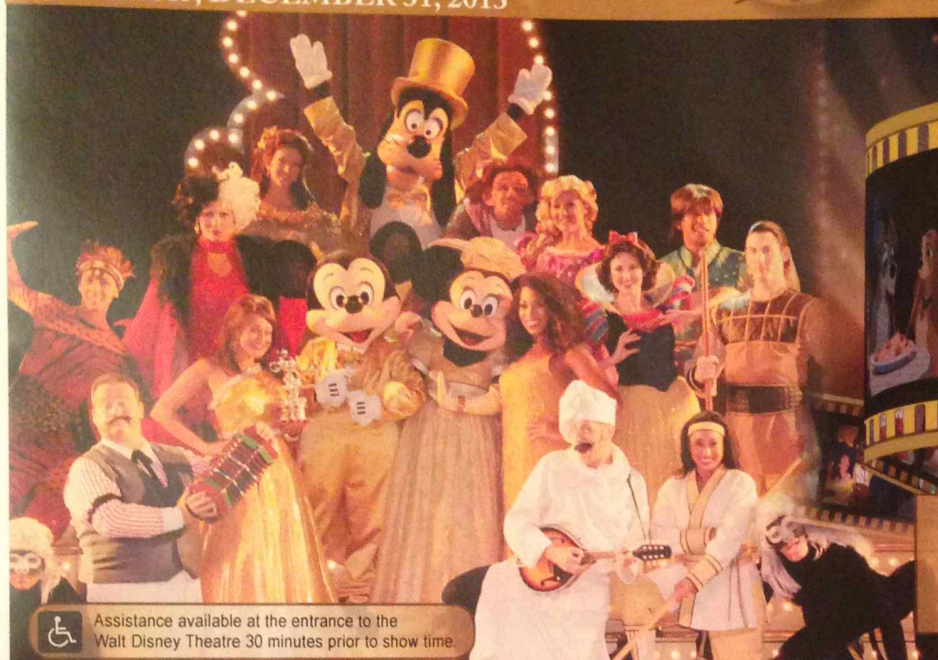
All Aboard: 5:00 p.m.

Gangway: Deck 1, Midship/Deck 1, Aft

Tuesday: Partly Cloudy High: 73°F/23°C

Wednesday: Partly Cloudy High: 71°F/22°C

DISNEY'S CASTAWAY CAY



WALT DISNEY THEATRE
DECKS 3 & 4, FORWARD

6:15 P.M. & 8:30 P.M.



Assistance available at the entrance to the Walt Disney Theatre 30 minutes prior to show time.

NEW YEAR'S EVE

Disney's Castaway Cay

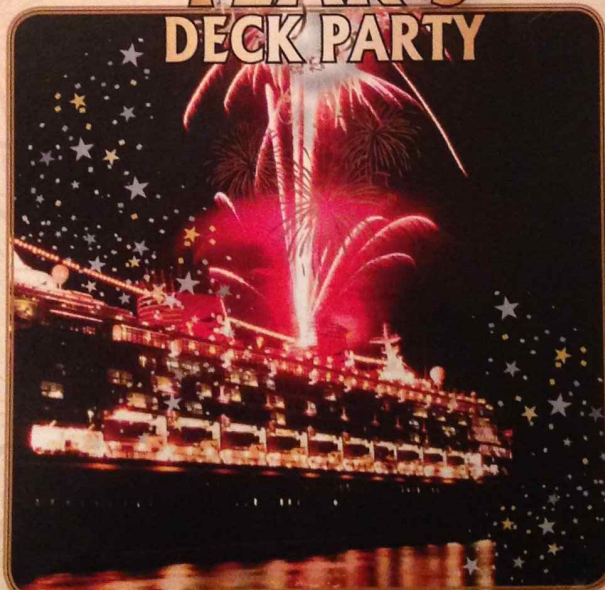
Reserved exclusively for Guests on Disney Cruise Line Bahamian and Caribbean cruise vacations, Castaway Cay is Disney's private port-of-call paradise. On this island, enjoy tropical leisure activities, such as snorkeling, boating, swimming and sunbathing.

Friendly Reminders

- Serenity Bay is reserved for
- Guests 18 and older.
- Your Key To The World Card will need to be used for all transactions on Disney's Castaway Cay except for the Post Office.
- A limited number of all-terrain wheelchairs are available across from Scuttle's Cove.
- For your convenience, beach towels are available as you leave the ship; please return them at the gangway at the end of your day.

Due to our commitment to the environment, we ask that seashells, coral and other natural treasures be left undisturbed at Disney's Castaway Cay for all to enjoy.

NEW YEAR'S EVE DECK PARTY



The Biggest Party on the High Seas
Help us ring in the New Year
Disney Dream style!
Deck 11 & 12 Midship

NEW YEAR'S EVE EXTRAVAGANZA

7:30 p.m.

Family Countdown Dance Party
Club New Year's Eve, D Lounge

9:45 p.m.

The party kicks off with
Guest DJ Randy, Deck Stage

11:00 p.m.

Live Music with the
Disney Dream Band, Deck Stage

11:45 p.m.

Ring in the New Year with
your Cruise Director, Lesley, and the
World Famous Disney Characters,
Deck Stage

12:00 a.m.

New Year's Eve Fireworks
(Fireworks will be Starboard side and can be seen best
from Deck 11, center pool area, and on Deck 12.)

12:05 a.m.

The party on deck continues with
DJ Randy, and in Evolution Nightclub (18+) with DJ Marius.

DINNER MENU

Animator's Palate: New Year's Eve Dinner
Enchanted Garden: New Year's Eve Dinner
Royal Palace: New Year's Eve Dinner

DRINK OF THE DAY

Final Countdown (Alcoholic)
Cranberry No-jito (Non Alcoholic)

IMPORTANT NUMBERS

Fire/Security: 7-3001
Medical Emergency: 7-3000
Health Center: 7-1923

FUN FOR ALL AGES HIGHLIGHTS

RUNDISNEY: CASTAWAY CAY 5K (12+)

Evolution, Deck 4, Aft - 8:15 a.m.

Runners (12+) meet at 8:15 a.m. We will depart the ship at 8:30 a.m., and make our way to the Bike Rentals where the run will begin.

ISLAND POWER WALK

Meet at the Post Office, Disney's Castaway Cay - 9:30 a.m.

Join your Cruise Staff for a brisk walk around the island. Meet outside, on the pier by the Post Office. Meet time is 9:30 a.m. Walk leaves promptly at 9:45 a.m.

CRAB RACES

Island Gazette 1, Disney's Castaway Cay - 11:45 a.m.

Island Gazette 2, Disney's Castaway Cay - 12:45 p.m.

Watch some local sea creatures make a break for the finish line.

DISNEY ANIMATION: CREATING A CHARACTER

D Lounge, Deck 4, Midship - 3:00 p.m.

Go behind the scenes at Walt Disney Animation Studios as Walt Disney himself talks about his most famous characters, then learn the basic techniques of drawing Mickey and Donald in this fun and interesting enrichment program.

MAKING OF THE DREAM

Evolution, Deck 4, Aft - 3:00 p.m.

Explore the origins of Disney Cruise Line and the latest and greatest innovations conjured especially for the Disney Dream in this fascinating and entertaining behind-the-scenes program.

DISNEY VACATION CLUB GROUP PREVIEW

Evolution, Deck 4, Aft - 4:30 p.m.

Want to learn more about taking magical vacations year after year? Please see a Disney Vacation Club representative on Deck 4, Midship, or call 7-2805 from your stateroom phone for more information about our interactive group presentation.

MIRROR, MIRROR

D Lounge, Deck 4, Midship - 9:45 p.m.

Head to D Lounge for the fairest game show of them all, Mirror, Mirror featuring the Magic Mirror and everyone's favorite dwarf, Dopey.

SALUDOS AMIGOS FIESTA

D Lounge, Deck 4, Midship - 10:15 p.m.

Come see what Donald and his friends are up to this time. Bring the family out to this interactive dance party featuring fun Latin music! Your family will learn to Salsa, Merengue and just have a Latin good time!

ADULT ACTIVITY HIGHLIGHTS

SENSES SPA FITNESS CLASSES & SEMINARS

Metabolic Assessment - Senses Fitness Center - 7:00 a.m.

Body Sculpt Boot Camp - Goofy's Sports Deck - 8:00 a.m.

Wake Up & Stretch Class - Senses Fitness Center - 9:00 a.m.

Burn Fat Faster - Senses Fitness Center - 10:00 a.m.

Yoga on the Beach - Serenity Bay - 10:30 a.m.

Good Feet: Improving Posture - Senses Fitness Center - 3:30 p.m.

Pathway to Pilates - Senses Fitness Center - 4:00 p.m.

TASTING CLASSES

Beer Tasting (21+) - 687 Pub (Pre Book, Nom. Fee) - 4:00 p.m.

Whiskey Tasting (21+) - Meridian (Pre Book, Nom. Fee) - 9:45 p.m.

Please make reservations for tastings at Guest Services for a nominal fee.

Tasting Seminars are only for Guests 21 and Older.

CLUB 18*21 - BASKETBALL FREE THROW

In Da Shade Game Pavilion, - 1:00 p.m.

Join your Cruise Staff in this fun tournament and see how many you can sink in 30 seconds!

CLUB 18*21 - XBOX® KINECT™ CHALLENGE

687 Pub, Deck 4, Aft - 5:30 p.m.

CLUB 18*21 - MIXER

Evolution, Deck 4, Aft - 10:00 p.m.

ART OF THE THEME SHOW TOUR

Meet at Meridian, Deck 12, Aft - 2:30 p.m.

Join us on a guided ship tour and discover the key ingredients that make the Disney Dream cruise ship one-of-a-kind.

SPORTS TRIVIA

687, Deck 4, Aft - 5:00 p.m.

Join your Cruise Staff team and test your Sports knowledge.

BRAINTEASERS TRIVIA

687 Pub, Deck 4, Aft - 7:30 p.m.

Put your brain to the test as your Club Host, pushes the limits of your knowledge with some classic Brainteasers. Can you figure them out?

DREAM QUEST

Evolution, Deck 4, Aft - 10:00 p.m.

Enjoy the wildest and wackiest scavenger team event on the seven seas!



NEW YEAR'S EVE COUNTDOWN TO 2014

\$3,000 MEGA JACKPOT BINGO



D Lounge, Deck 4, Midship

Card Sales - 4:00 p.m.

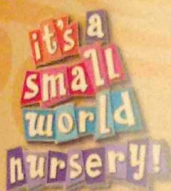
Game Starts - 4:15 p.m.

It's your chance to take home \$3,000 if you can cover your card in 46 numbers or less, if not we'll play on for the biggest cash prize of the session! Four cash prizes are up for grabs, plus raffle prizes including facials and massages courtesy of the Senses Spa & Salon!

YOUTH ACTIVITIES HIGHLIGHTS

Dine & Play

A convenience for families dining at 8:15 p.m., our Youth Activities Counselors will be available at 9:15 p.m. at the entrance of Royal Palace, Enchanted Garden and Animator's Palate dining rooms to bring registered children to join the fun in the Youth Activity areas.



Deck 5 Midship (7-5864)

9:00 a.m. - 1:00 a.m.

OPEN HOUSE

8:00 a.m. - 9:00 a.m.

Your chance to see our toddler space, It's A Small World Nursery.



Deck 5, Midship (7-1440)
(3 - 12 years old)

5:00 p.m. - 11:00 p.m.

MAGIC PLAYFLOOR

4:15 p.m.

Explore the latest technology of the Disney's Oceaneer Club Magic PlayFloor.

PLUTO'S PAJAMA PARTY

9:00 p.m.

Bring the little ones in their pajamas but there will be anything but sleep when Pluto and friends host the ultimate slumber party!



Deck 5, Midship (7-1445)
(3 - 12 years old)

4:00 p.m. - 1:00 a.m.

STITCH'S ADVENTURE SQUAD

4:30 p.m.

Stitch, everyone's favorite alien, is making an appearance to share some of his mischievous games and activities.

PISTON CUP CHALLENGE

7:15 p.m.

It's Dinoco time and you're part of the pit crew! Design your own race car and see if you've got what it takes to end up in the Winner's Circle!



Deck 13, Midship (7-9743)
(11 - 14 years old)

4:00 p.m. - 1:00 a.m.

ANYONE CAN COOK

4:30 p.m.

Anyone can cook as we work together to create some of our favorite treats.

MAGIC SHOW

9:00 p.m.

The Magnificent Magician will demonstrate to you some of the best known magic tricks on the sea.



Entrance on Deck 4, Forward (7-9417)
(14 - 17 years old)

5:00 p.m. - 2:00 a.m.

ANYONE CAN COOK

5:15 p.m.

Anyone can cook as we work together to create some of our favorite treats.

MIX AND MATCH

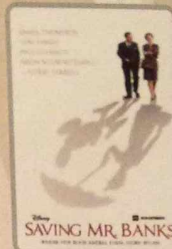
11:00 p.m.

Try to find your "perfect match" in Disney's very own "Dating" game.

BUENA VISTA THEATRE

Today's Movies

OC - Open Captioning



10:00 a.m.
Duration:
2 hrs 5 mins
Rating: PG-13

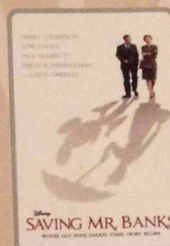


12:45 p.m.
Duration:
1 hr 51 mins
Rating: PG-13



3:00 p.m.
Duration:
1 hr 43 mins
Rating: G

DOLBY 3D



5:15 p.m. & 8:00 p.m.
Duration: 2 hrs 5 mins
Rating: PG-13



11:00 p.m.
Duration: 1 hr 51 mins
Rating: PG-13



FAMILY COUNTDOWN DANCE PARTY

Come join us as we count down to a brand new year while taking you on a journey of great musical genres throughout history!

D Lounge,
Deck 4, Midship,
7:30 p.m.



ADULT VARIETY ACT

Featuring the Comedy & Ventriloquism of Lynn Trefzger, as she entertains you in this adult exclusive show.

Evolution (18+),
Deck 4, Aft,
10:30 p.m.

YOUTH ACTIVITIES OPEN HOUSE

Open House is an opportunity for all to come and participate in a variety of exciting activities and free time in It's A Small World Nursery, the Oceaneer Club, Oceaneer Lab, Edge and Vibe throughout the cruise. During these times secured programming will still be offered in the other venues for those looking to check their children into care.

It's A Small World Nursery: 8:00 a.m. - 9:00 a.m.
Disney's Oceaneer Club: 9:00 a.m. - 5:00 p.m.
Vibe: 4:00 p.m. - 5:00 p.m.
Edge: 3:00 p.m. - 4:00 p.m.

MORE TO ENJOY WHILE ONBOARD

FREE ON DEMAND TV

Watch Disney movies, Hollywood features, ABC shows, and even captioned content, plus much more "On Demand" for FREE in the comfort of your stateroom! Bookmark your movie and come back to watch it later. Press MENU on your stateroom television remote control and follow the prompts.

DISNEY MAGIC REIMAGINED

New delights are sailing your way on the reimagined Disney Magic! Take a plunge on the thrilling AquaDunk slide. Unleash your inner super hero at MARVEL's Avengers Academy. Dine in South American-style at Carioca's. Visit the Future Cruise Sales Desk today to find out about our special onboard booking offer.



PURE INDULGENCE

Come and indulge yourself with a therapeutic Hot Stone Massage and a luxurious European Facial for only \$129 (50 minutes of pure indulgence for YOU!!)

Senses Spa, Deck 11, Forward, Ext 7-1465

PROVENANCE GEMS PRESENTS: EXCLUSIVE SNOWFLAKE ZULTANITE

The rarest of Gems in the rarest of cuts. The Zultanite Snowflake Pendant by Provenance Gems. This exclusive design is now available to view onboard. Majestically cut by the world renowned Wobito brothers in Canada and beautifully brought to life by our chief designer Marek Chmiel.



WHITECAPS
Deck 3, Forward



FORMAL PORTRAITS TONIGHT!

Now that the family is dressed up and ready to enjoy the evening, capture the memories in your formal attire by visiting our professional portrait studios located in the Lobby Atrium, Deck 3, Midship.

Christmas Tree, Grand Staircase - Groups accommodated

Night Ship Portrait - Six Guests maximum

5:15 p.m. - 6:00 p.m., 7:15 p.m. - 8:30 p.m., 9:30 p.m. - 10:15 p.m.

**Terms and conditions apply. Photos captured on your vacation are only available for purchase during this cruise.

Disney Cruise Line PORT ADVENTURES

Welcome to Disney's Island Paradise Castaway Cay! Today is the day to relax in an inner tube, snorkel in the Caribbean blue, get up-close and personal to real life stingrays or fly high in the sky on a parasail excursion during a breathtaking aerial adventure.

Visit Marge's Barges or one of the rental locations and our friendly team will assist in making any last minute bookings.

PORT ADVENTURES MEETING TIMES AND LOCATIONS

As per ticket	Castaway Ray's Stingray Adventure	Gil's Fins and Boats
As per ticket	Glass Bottom Boat	Marge's Barges
As per ticket	Castaway Cay Bottom Fishing	Marge's Barges
As per ticket	Seahorse Catamaran Snorkel	Marge's Barges
As per ticket	Nature Walk and Kayaking	As per ticket
As per ticket	Parasailing	Marge's Barges
9:00 a.m. meet	Teen Wild Side	Vibe
As per ticket	Watercraft Ski Adventure	Boat Beach

DISNEY'S CASTAWAY CAY ISLAND RENTALS

Bicycles	8:30 a.m. - 4:00 p.m.	Near Cookies Too
Boats	8:30 a.m. - 4:00 p.m.	Boat Beach
Snorkeling Gear	8:30 a.m. - 3:30 p.m.	Gil's Fins and Boats / Flippers and Floats
Float	8:30 a.m. - 3:30 p.m.	Gil's Fins and Boats / Flippers and Floats
Getaway Package	8:30 a.m. - 3:30 p.m.	Gil's Fins and Boats / Flippers and Floats

Reservations can be made on the island at each rental location. Castaway Ray's walk up reservations can be made at Gil's Fins and Boats on Family Beach.

SHOPPING

DOONEY & BOURKE CAPTURE THE SEA

The sweet temptations of the sea have inspired these quality bags once again. Our nautical and four ships collections will be a great accessory to add to your Disney Cruise Line memories. Whitecaps, Deck 3, Forward.

MEMORIES FROM ACROSS THE MAP

Come try on one of our quality designer fragrances from all over the world! Chanel, Gucci, Jimmy Choo, and many more for men and women. Whitecaps, Deck 3, Forward.

BURIED TREASURE REVEALED

Discover artwork to brighten your home from Thomas Kinkade, "The Painter of Light". Many of your favorite Disney stories retold by this amazing artist, with a few hidden surprises. Also make your selections for the silent auction which will close on the final night of the cruise. Vista Gallery, Deck 4, Midship.

TREASURE OF KINGS, ALL THINGS THAT BLING

Satisfy your desire for treasure with our onboard Swarovski collection. Unveil a wide range of jewelry, sparkling pens, and even your favorite Disney characters celebrated in crystal. Every pirate in your crew will find something to claim. Whitecaps, Deck 3, Forward.

MAROONED IN PARADISE

She Sells Seashells And Everything Else and Buy the Seashore are your island memory destinations for apparel, plush, postcards, swimwear, and, well, everything else! Get your Run Disney Castaway Cay 5K tee exclusively at Buy the Seashore. Island purchases may be delivered to the ship for pickup after 6:00 p.m. in Whitecaps.

Due to port regulations, when the ship is docked, the stores will remain closed.

IMPORTANT INFORMATION

Security Notice

All Guests (including children) who wish to disembark the ship are required to present their Key to the World card at the gangway. A photo ID is also required for those Guests who are 18 years of age or older. Guests under the age of 18 are required to have a parent, guardian or other responsible adult sign an authorization form at the Guest Service Desk if they wish to go ashore unaccompanied or with any adult from another stateroom.

Cold and Flu Reminder

Please wash hands frequently and thoroughly, particularly before meals. Contact the Health Center by dialing 7-1923, should anyone in your party become ill.

Corridor Quiet Hours

As a courtesy to all our Guests, please recognize quiet hallway hours from 10:00 p.m. til 8:00 a.m.

Inclement Weather

For the safety of all Guests, outdoor events may be changed due to unforeseen weather conditions.

Environmental Message

With Disney's commitment to the environment, please refrain from throwing anything over the ship's side. Thank you!

No Reserved Seats Policy

As a courtesy to all our Guests, we kindly advise that the saving of seats is not permitted in the Walt Disney Theatre, and the saving of the sun loungers is not permitted on Deck 11, 12 and 13. Items left unattended will be returned to lost and found at Guest Services, Deck 3, Midship.

Smoking

For the comfort of our guests the following areas are designated as Smoking areas:

- Deck 13, Forward, port side, by "Currents"
- Deck 12, Aft, port side outdoor area that is accessible through the Meridian Lounge
- Deck 4, Aft, port side from 6:00 p.m. to 6:00 a.m. only (all of Deck 4 is no smoking from 6:00 a.m. to 6:00 p.m.)

-Smoking is prohibited inside all guest staterooms and on stateroom verandahs. Guests found smoking in their staterooms or on their verandahs will be charged a \$250 stateroom recovery fee. Electronic cigarettes may only be used in designated smoking areas.

Walt Disney Theatre

Theatrical performances may use artificial fog, strobe lights, pyrotechnics and other special effects. For the safety of our performers and the comfort of those around you, the use of any photography, video recording devices or any electronic equipment is prohibited.

Verandah Safety

Please do not leave any combustible materials on your balcony when not present in your stateroom for safety reasons.

Morning	8:30	8:45	9:00	9:15	9:30	9:45	10:00	10:15	10:30	10:45	11:00	11:15	11:30	11:45	12:00	12:15	12:30	12:45	1:00	1:15	1:30	
FUNNEL VISION	101 Dalmatians (G) Funnel Vision						Beauty & the Beast (G) Funnel Vision						Tarzan (G) Funnel Vision									
BUENA VISTA THEATRE							Saving Mr. Banks PG (PG-13) Duration: 2 Hours 5 Minutes						Thor: The Dark World (PG-13) Duration: 1 Hour 51 Minutes									
CHARACTER	Jake Dk 4, Balcony		Pluto Rustmore		Captain Jack Sparrow Marge's Barges		Hook & Smee Dk 4, Balcony		Daisy Gangway				Character Dance Party Gazebo 1									
FUN FOR ALL AGES	Disney Channel CA 5K		Meet in Evolution at 8:15 a.m. (Departs at 8:30 a.m.)		Island Power Walk Meet at the Post Office		Midship Detective Agency Deck 5, Midship		DJ Marius Spins on the Island Island Gazebo 1		Crab Races Island Gazebo 1		Character Dance Party Island Gazebo 1		Crab Races Island Gazebo 2		Live Music with Matt Bruno Island Gazebo 1		Family Whale Dig Monstro Point			
ADULTS	Friends of Bill W. Outlook		Wake Up & Stretch Class Senses Fitness Center		Burn Fat Faster Senses Fitness Center		Please check your Port Adventures tickets for location and meeting times.		Yoga on the Beach Serenity Bay		Basketball Free Throw In Da Shade		Basketball Free Throw In Da Shade		Club 18*21 Basketball Free Throw In Da Shade		Lunch at Cookies Too		Teen Hideout			
VIBE 14-17 YEARS OLD			The Wild Side - Meet at Vibe		Hangin' at Teen Hideout																	
EDGE 11-14 YEARS OLD					Sand Soccer		Hangin' at In Da Shade		Lunch at Cookies Too		Pelican Plunge											
SCUTTLE'S COVE			Water Games		The Dig at Monstro's Point		Treasure Hunt		Lunch				Sand Castle Competition									
OCEANEER LAB 3-12 YEARS OLD																						
OCEANEER CLUB 3-12 YEARS OLD	Youth Activities Open House																					
Afternoon	1:45	2:00	2:15	2:30	2:45	3:00	3:15	3:30	3:45	4:00	4:15	4:30	4:45	5:00	5:15	5:30	5:45	6:00	6:15	6:30	6:45	
FUNNEL VISION	The Lion King (G) Funnel Vision						Mulan (G) Funnel Vision						Virtual Tours Funnel Vision									
BUENA VISTA THEATRE							Monsters University (G) Duration: 1 Hour 43 Minutes						Saving Mr. Banks (PG-13) Duration: 2 Hours 5 Minutes									
CHARACTER							Cinderella Lobby Atrium (V)						Snow White Lobby Atrium (V)									
FUN FOR ALL AGES	Live Music with Matt Bruno Island Gazebo 1		Disney Animation: Creating a Character D Lounge		Bingo Pre Sales D Lounge		\$3,000 Mega Jackpot BINGO D Lounge		The Dreamers Live Lobby Atrium		Red Carpet Arrivals		THE GOLDEN MICKEYS A Timeless Tribute Walt Disney Theatre		Family Crafts D Lounge							
	Midship Detective Agency Deck 5, Midship		Making of the Dream Evolution		DJ Marius Spins on the Island Island Gazebo 1		Magic Playfloor Disney's Oceaneer Club		Tom Scott Live District Lounge													
ADULTS	Art of the Theme Show Tour Meet at Meridian		Improve Your Posture Senses Fitness Center		Beer Tasting (21+) 687 Pub (Pre Book, Nom. Fee)		Sports Trivia 687 Pub		Club 18*21 - Xbox® Kinect™ Challenge 687 Pub													
	Books and Magazines available in Cove Cafe.		NCAA Live: Indiana vs. Illinois 687 Pub (Subject to Satellite Availability)		Pathway to Pilates Senses Fitness Center		Disney Vacation Club Group Preview Evolution															
VIBE 14-17 YEARS OLD	Hangin' at Teen Hideout				Youth Activities Open House		Open for Teens		Anyone Can Cook													
EDGE 11-14 YEARS OLD	Hangin' at In Da Shade		Invade Teen Hideout Until 4:00 p.m.		Sun Deck Fun		Open for Tweens		Anyone Can Cook												Boys and Girls Chill	
SCUTTLE'S COVE	Caribbean Beach Party		Capture the Flag		Scuttle's Cove Closes at 4:00 p.m.																	
OCEANEER LAB 3-12 YEARS OLD					Pirates of the Caribbean: Tides of Fortune		Stitch's Adventure Squad		Mirror, Mirror		Dinner											
OCEANEER CLUB 3-12 YEARS OLD	Youth Activities Open House				Magic PlayFloor		Once Upon a Time		Dinner				Aloha Luau									
Evening	7:00	7:15	7:30	7:45	8:00	8:15	8:30	8:45	9:00	9:15	9:30	9:45	10:00	10:15	10:30	10:45	11:00	11:15	11:30	11:45	12:00	
FUNNEL VISION	NEW YEAR'S EVE DECK PARTY Deck 11 & 12, Midship																					
BUENA VISTA THEATRE	Saving Mr. Banks (PG-13) Duration: 2 Hours 5 Minutes						Ariel Lobby Atrium (V)						Princess Tiana Lobby Atrium (V)									
CHARACTER	Ariel Lobby Atrium (V)		Mickey Mouse Deck 4, Balcony		Snow White Lobby Atrium (V)				Mickey Mouse Deck 4, Balcony		Goofy Lobby Atrium (V)											
FUN FOR ALL AGES	Disney Trivia Evolution		Red Carpet Arrivals		THE GOLDEN MICKEYS A Timeless Tribute Walt Disney Theatre		Family Crafts D Lounge		Mirror, Mirror D Lounge		Saludos Amigos Fiesta D Lounge											
ADULTS	Brainteasers Trivia 687 Pub		NCAA Football: Duke Blue Devils vs. Texas A&M Aggies 687 Pub (Subject to Satellite Availability)		DJ Marius Evolution		Tom Scott Live District Lounge		Club 18*21 Mixer Evolution		Adult Variety: Lynn Trefzger Evolution										DJ Marius Evolution	
	Live Music with Metrotones District Lounge		Live Music with Tom Scott District Lounge		Magic Show																Fireworks	
VIBE 14-17 YEARS OLD	Smoothie Hour																				Fireworks	
EDGE 11-14 YEARS OLD	Boys and Girls Chill				Trivia Challenge		Magic Show															
OCEANEER LAB 3-12 YEARS OLD	Piston Cup Challenge				Magic PlayFloor		Get the Hook		Anyone Can Cook: Cupcakes		Magic Show										Dance Party	
OCEANEER CLUB 3-12 YEARS OLD	Aloha Luau		Heffalump Hunting				Pluto's Pajama Party				Dance Party		Youth Activities Open House									

Symbol for activities that will be repeated during the cruise

TUESDAY, DECEMBER 31, 2013 - DISNEY'S CASTAWAY CAY

BUENA VISTA THEATRE

CC - Open Captioning

DOLBY 3D



10:00 a.m. Duration: 2 hrs 5 mins Rating: PG-13	12:45 p.m. Duration: 1 hr 51 mins Rating: PG-13	3:00 p.m. Duration: 1 hr 43 mins Rating: G	5:15 p.m. & 8:00 p.m. Duration: 2 hrs 5 mins Rating: PG-13	11:00 p.m. Duration: 1 hr 51 mins Rating: PG-13
--	--	---	--	--

Character Appearances

JAKE - THE NEVERLAND PIRATE
Deck 4, Balcony
8:45 a.m. & 9:45 a.m.

DONALD DUCK
Post Office
9:00 a.m. & 10:00 a.m.

PLUTO
Mt. Rustmore - 9:15 a.m.
Scuttle's Cove - 10:15 a.m.

STITCH
Gangway
9:15 a.m. & 10:15 a.m.

CAPTAIN HOOK & MR. SNEE
Deck 4, Balcony
9:15 a.m. & 10:15 a.m.

MICKEY MOUSE
Scuttle's Cove - 9:15 a.m.
Mt. Rustmore - 10:15 a.m.
Deck 4, Balcony - 5:00 p.m.,
7:30 p.m. & 9:45 p.m.

CAPTAIN JACK SPARROW
Marge's Barges - 9:30 a.m.

CHIP & DALE
Post Office
9:30 a.m. & 10:30 a.m.

DAISY DUCK
Gangway
9:30 a.m. & 10:30 a.m.

GOOFY
Mt. Rustmore - 9:45 a.m.
Scuttle's Cove - 10:45 a.m.
Lobby Atrium (P) - 10:30 p.m.

MINNIE MOUSE
Scuttle's Cove - 9:45 a.m.
Mt. Rustmore - 10:45 a.m.
Lobby Atrium (H)
7:15 p.m. & 9:30 p.m.

CINDERELLA
Lobby Atrium (V) - 4:45 p.m.

SNOW WHITE
Lobby Atrium (V)
5:30 p.m. & 7:45 p.m.

ARIEL
Lobby Atrium (V)
7:00 p.m. & 9:30 p.m.

PRINCESS TIANA
Lobby Atrium (V) - 10:15 p.m.

(H) Hallway - (S) Starboard Side - (P) Port Side - (V) Vestibule

For details of daily Disney character appearances, refer to the character line on your Nautical Card, or the digital character board in the Lobby Atrium.

YOUTH ACTIVITIES THEMED EXPERIENCES

CLUBHOUSE SERIES
focuses on movement and features content which appeals to younger children.

STORYBOOK SERIES
is designed with a strong connection to the Disney classic stories.

JUMP UP! SERIES
includes large group games & movement-oriented activities.

CREATE & INVENT SERIES
will have a tactile focus allowing children to create and admire their work.

OPEN HOUSE

activities for families, adults and children of all ages to enjoy together.

IN THE SPOTLIGHT SERIES
focuses on children's stage presence with lots of activities and enthusiasm.

SOVE IT! SERIES
are less active, but will challenge children with problem/solution-based activities.

SHIP DIRECTORY

YOUTH ACTIVITIES

DISNEY'S OCEANEER CLUB	DECK 5, MID	5:00 PM - 11:00 PM
DISNEY'S OCEANEER LAB	DECK 5, MID	4:00 PM - 1:00 AM
EDGE	DECK 13, MID	4:00 PM - 1:00 AM
SCUTTLE'S COVE	CASTAWAY CAY	9:00 AM - 4:00 PM
VIBE	DECK 4, FWD	5:00 PM - 2:00 AM
IT'S A SMALL WORLD NURSERY	DECK 5, MID	9:00 AM - 1:00 AM

POOLS & MORE

* Children under 12 must have adult supervision in pool areas.

AQUADUCK	DECK 12, MID	10:00 AM - 8:30 PM
DONALD'S POOL	DECK 11, MID	10:00 AM - 6:00 PM
MICKEY'S POOL	DECK 11, MID	6:00 AM - 8:30 PM
MICKEY'S SLIDE	DECK 11, MID	12:30 PM - 6:00 PM
NEMO'S REEF	DECK 11, MID	10:00 AM - 6:00 PM
QUIET COVE POOL	DECK 11, FWD	6:00 AM - 12:00 MID

RECREATION

GOLF/SPORTS SIMULATORS	DECK 13, AFT	1:00 PM - 6:00 PM
GOOFY GOLF	DECK 13, AFT	8:00 AM - 8:30 PM
GOOFY'S SPORTS DECK	DECK 13, AFT	12:00 MID - 6:00 PM
MARGE'S BARGES	CASTAWAY CAY	8:30 AM - 3:30 PM
MIDSHIP DETECTIVE AGENCY	DECK 5, MID	8:00 AM - 11:00 PM
PORT ADVENTURES DESK	DECK 5, MID	
SENSES FITNESS CENTER	DECK 11, FWD	6:00 AM - 10:00 PM

GENERAL INFORMATION

ARR-CADE	DECK 11, AFT	24 HOURS
BUENA VISTA THEATRE	DECK 4 & 5, MID	SHOWTIMES
DISNEY VACATION CLUB	DECK 4, MID	5:30 PM - 10:00 PM
FUTURE CRUISE SALES DESK	DECK 4, MID	
GUEST SERVICES	DECK 3, MID	24 HOURS
HAIRBRAIDING	DECK 11, MID	5:30 PM - 10:00 PM
MEDICAL HEALTH CENTER	DECK 1, FWD	9:30 AM - 11:00 AM
		4:30 PM - 7:00 PM
PORT & SHOPPING DESK	DECK 4, MID	
PRELUDES	DECK 3, FWD	5:45 PM - 6:30 PM
		8:00 PM - 8:45 PM
SENSES SPA AND SALON	DECK 11, FWD	8:00 AM - 10:00 PM
SHUTTERS PHOTO GALLERY	DECK 4, MID	5:00 PM - 11:00 PM
WALT DISNEY THEATRE	DECK 3 & 4, FWD	SHOWTIMES

SHOPPING

MICKEY'S MAINSAIL	DECK 3, FWD	5:30 PM - 11:00 PM
SEA TREASURES	DECK 3, FWD	5:30 PM - 11:00 PM
QUACKS	DECK 11, MID	7:00 PM - 11:00 PM
VISTA GALLERY	DECK 4, MID	6:00 PM - 10:00 PM
WHITECAPS	DECK 3, FWD	5:30 PM - 11:00 PM
WHOZITS & WHATZITS	DECK 11, MID	5:00 PM - 11:00 PM

DUE TO PORT REGULATIONS, WHEN THE SHIP IS DOCKED, THE STORES MUST REMAIN CLOSED.

DINNER MENU

Animator's Palate, New Taste For Disney
Enchanted Garden, New Taste For Disney
Royal Palace, New Taste For Disney
Dining Times: 5-11 p.m. & 11-1 p.m.

DRINK OF THE DAY

Final Countdown
(Alcoholic)
Candoray No-pal
(Non-Alcoholic)

WEATHER FORECAST

Tuesday:
Partly Cloudy
High: 79°F
Wednesday:
Partly Cloudy
High: 71°F/22°C

Evening Attire Optional Dress Up

DINING & LOUNGES

BREAKFAST

CABANAS CONTINENTAL	DECK 11, AFT	
CABANAS	DECK 11, AFT	7:30 AM - 10:45 AM
ENCHANTED GARDEN	DECK 2, MID	8:00 AM - 10:30 AM
ROYAL PALACE	DECK 3, MID	8:00 AM - 9:30 AM

LUNCH

CABANAS	DECK 11, AFT	12:00 PM - 1:30 PM
COOKIES	CASTAWAY CAY	11:30 AM - 2:00 PM
COOKIES TOO	CASTAWAY CAY	11:30 AM - 2:00 PM
FILLMORE'S FAVORITES	DECK 11, MID	10:30 AM - 6:00 PM
LUIGI'S PIZZA	DECK 11, MID	10:30 AM - 6:00 PM
TOW MATER'S GRILL	DECK 11, MID	10:30 AM - 6:00 PM

DINNER

ANIMATOR'S PALATE	DECK 3, AFT	5:45 PM & 8:15 PM
CABANAS TABLE SERVICE	DECK 11, AFT	6:30 PM - 8:30 PM
ENCHANTED GARDEN	DECK 2, MID	5:45 PM & 8:15 PM
ROYAL PALACE	DECK 3, MID	5:45 PM & 8:15 PM
PALO & REMY	DECK 12, AFT	6:00 PM - 9:00 PM
(RESERVATIONS REQUIRED & COVER CHARGE APPLICABLE, DIAL #7-9734)		
TOW MATER'S GRILL	DECK 11, MID	6:00 PM - 11:00 PM

LATE NIGHT SNACKS

LUIGI'S PIZZARIA	DECK 11, MID	9:30 PM - 12:30 AM
------------------	--------------	--------------------

ADDED FEATURES

BEVERAGE STATION	DECK 11, MID	24 HOURS
EYE SCREAM	DECK 11, MID	10:30 AM - 12:30 AM
ROOM SERVICE	DIAL 0	24 HOURS

ENTERTAINMENT - LOUNGES - BARS

Adults must be 21 and older to consume alcoholic beverages.

687 PUB (18+ AFTER 9:00 PM)	DECK 4, AFT	4:00 PM - 1:00 AM
BON VOYAGE	DECK 3, MID	3:00 PM - 11:00 PM
COVE BAR (18+)	DECK 11, FWD	11:00 AM - 1:00 AM
COVE CAFE (18+)	DECK 11, FWD	7:00 AM - 12:30 AM
CURRENTS (18+)	DECK 13, FWD	2:00 PM - 1:00 AM
D LOUNGE	DECK 4, MID	SHOWTIMES (CLOSES 11:00 PM)
DISTRICT LOUNGE (18+ AFTER 9:00 PM)	DECK 4, AFT	4:30 PM - 1:00 AM
EVOLUTION (18+)	DECK 4, AFT	10:00 PM - 11:00 PM
		12:00 AM - 2:00 AM
FROZONE TREATS	DECK 11, MID	1:00 PM - 12:30 AM
MERIDIAN (18+)	DECK 12, AFT	5:00 PM - 1:00 AM
OUTLOOK	DECK 14, MID	
PINK (18+)	DECK 4, AFT	5:00 PM - 1:00 AM
SKYLINE (18+)	DECK 4, AFT	5:00 PM - 1:00 AM
VISTA CAFE	DECK 4, MID	7:30 AM - 11:00 PM
WAVES	DECK 12, AFT	3:00 PM - 9:00 PM

CASTAWAY CAY BARS

CONCHED OUT BAR	CASTAWAY CAY	9:00 AM - 4:00 PM
CASTAWAY AIR BAR	CASTAWAY CAY	9:00 AM - 3:30 PM
HEADS UP BAR	CASTAWAY CAY	9:00 AM - 3:30 PM
SAND BAR	CASTAWAY CAY	9:00 AM - 4:00 PM

Consumers who order raw or partially cooked, ready-to-eat food of animal origin, are hereby informed that the food is not sufficiently cooked to ensure its safety.

IMPORTANT NUMBERS

Fire/Security: 7-3001
Medical EMERGENCY: 7-3000
Health Center: 7-1923

All Ashore: Approx. 8:30 a.m.
All Aboard: 5:00 p.m.