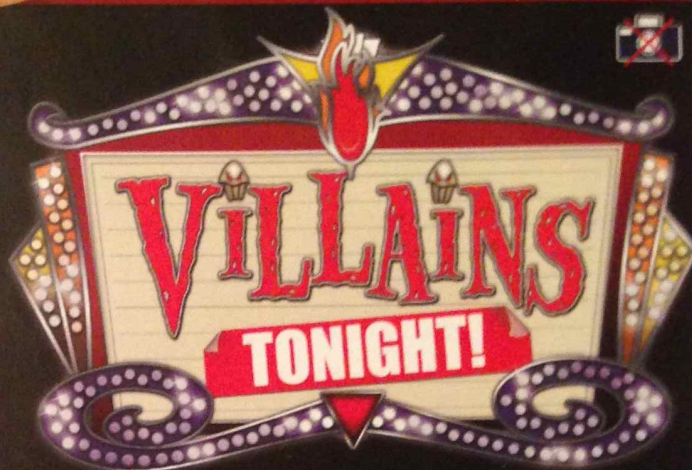
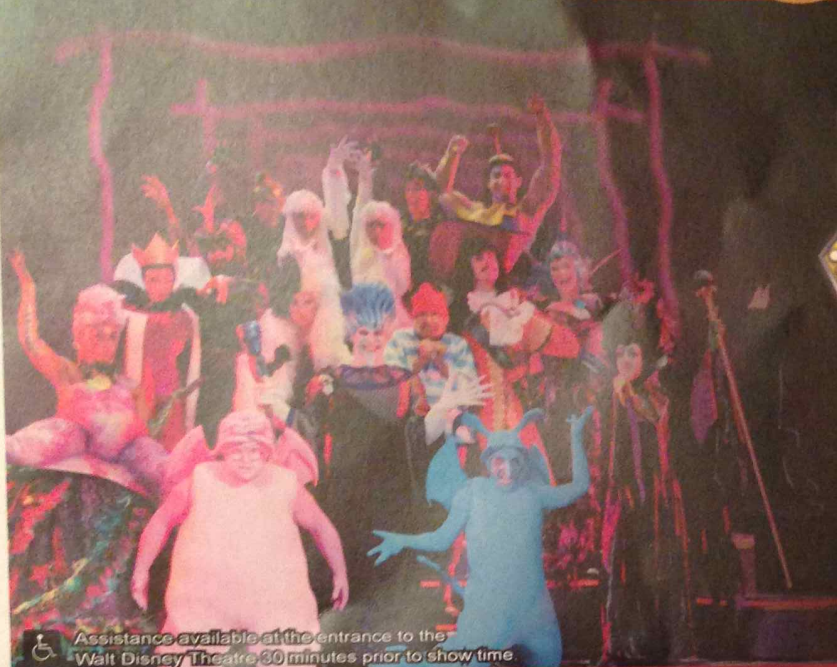


PERSONAL NAVIGATOR

MONDAY, DECEMBER 30, 2013



Sunrise: 6:54 a.m. Sunset: 5:30 p.m.
 Evening Attire: Pirate or Cruise Casual
 All Ashore: 9:30 a.m.
 All Aboard: 5:45 p.m.
 Gangway: Deck 1, Midship/Deck 1, Forward &
 Monday: Sunny High: 77°F/25°C
 Tuesday: Partly Sunny High: 71°F/22°C
NASSAU, BAHAMAS



WALT DISNEY THEATRE
DECK 3 & 4, FORWARD
6:15 P.M. & 8:30 P.M.

As a courtesy to all Guests, we kindly advise that the saving of seats is **not** permitted in the Walt Disney Theatre.

Assistance available at the entrance to the Walt Disney Theatre 30 minutes prior to show time.

Nassau Port Information

While you will find many great experiences in Nassau, there have been reports of increased crime, including assaults and robberies involving tourists in the area. As in any large city, you'll want to take some basic precautions to make the most of your time ashore.

- Be aware of your surroundings at all times, just as you would in your normal daily activities.
- Avoid short cuts, narrow alleys or poorly lit streets. We recommend that guests only visit the downtown shopping areas and other tourist locations.
- Leave valuables in your room safe and avoid carrying large amounts of cash. Exercise caution when using ATMs. Cameras and handbags should be carried out of sight and secured to your person with a strap.
- Leave passports, air transportation tickets and other travel documents in your room safe. When going ashore, each adult is required to carry a Driver's license, copy of passport or other government-issued photo ID.
- If traveling by taxi, use only licensed taxi operators.
- In general, use the same level of precaution you would use in any tourist destination.
- Most crimes are easier to commit in dark unlit areas. You should stay out of these types of areas and consider returning to the ship before nightfall. If you stay out at night, please be extra vigilant about your personal safety.



7:45 - 8:05 p.m.

Deck Stage,
Deck 11 & 12, Midship
marks the spot

It's a Pirate Celebration,
 me hearties!

Come experience all the
 pirate fun alongside
 Captain Mickey Mouse and
 his famous Pirate Crew.
 (Weather Permitting)

Don't Miss:

Making of the Dream

Evolution, Deck 4, Aft - 11:30 a.m.

Explore the origins of Disney Cruise Line and the latest and greatest innovations conjured especially for the Disney Dream in this fascinating and entertaining behind-the-scenes program.

Art of The Theme Show Tour (18+)

Meet at Meridian, Deck 12, Aft - 2:45 p.m.

Join us on a guided ship tour and discover the key ingredients that make the Disney Dream cruise ship one-of-a-kind.

Movie Special: Saving Mr. Banks - (PG-13)

Walt Disney Theatre, Deck 3 & 4, Forward - 11:00 p.m.

Author P.L. Travers reflects on her difficult childhood while meeting with filmmaker Walt Disney during production for the adaption of her novel, Mary Poppins.

Krazy Karaoke followed by Guest DJ Randy (18+)

Evolution, Deck 4, Aft - 11:00 p.m.

Take to the stage, grab a microphone and sing your favorite tunes with your Club Host Jo and DJ Marius. After, join a Guest DJ Randy as he rocks the nightclub.

Disney Cruise Line

PORT ADVENTURES

Welcome to Nassau, capital of the Bahamas. It is not too late to book an amazing adventure to Blue Lagoon Island, Atlantis, or you could book a snorkeling adventure.

All Port Adventures meet onboard the ship in Nassau. Please check your tour tickets for meeting times and locations.

DINNER MENU

Animator's Palate: Pacific Rim Cuisine
 Enchanted Garden: Continental Market
 Royal Palace: French Dinner

DRINK OF THE DAY

Yellow Bird (Alcoholic)
 Parrot Song (Non Alcoholic)

IMPORTANT NUMBERS

Fire/Security: 7-3001
 Medical Emergency: 7-3000
 Health Center: 7-1923

FUN FOR ALL AGES HIGHLIGHTS



CHIP-IT GOLF (12+)

Lobby Atrium, Deck 3, Midship - 1:45 p.m.

It's par for the course for our Guests 12 and older to compete on our special "greens" in this fun tournament.



DISNEY ANIMATION: CREATING A CHARACTER

D Lounge, Deck 4, Midship - 2:15 p.m.

Go behind the scenes at Walt Disney Animation Studios as Walt Disney himself talks about his most famous characters, then learn the basic techniques of drawing Mickey and Donald in this fun and interesting enrichment program.



DISNEY CHANNEL ON DECK

Deck Stage, Deck 11, Midship - 3:30 p.m.

Don't change that channel! It's time for a Disney Channel afternoon poolside! Your cruise staff will host an exciting day of games and contests in between your favorite Disney Channel shows! So sit back, relax, and enjoy the sun!



DISNEY VACATION CLUB GROUP PREVIEW

Evolution, Deck 4, Aft - 4:30 p.m.

Want to learn more about taking magical vacations year after year? Please see a Disney Vacation Club representative on Deck 4, Midship, or call 7-2805 from your stateroom phone for more information about our interactive group presentation.



A PIRATE'S LIFE FOR ME

D Lounge, Deck 4, Midship - 6:30 p.m. & 9:45 p.m.

Calling all Pirates, we be! If ye have an adventurous spirit or pirate savvy, come spin the "Wheel of Destiny" fer a treasure trove of fun be ripe for the takin' in this action packed pirate game show.



MICKEY'S PIRATES IN THE CARIBBEAN

Deck 11, Midship, Deck 11 - 7:45 p.m.

It's a Pirate Celebration, me hearties! Come experience all the pirate fun alongside Captain Mickey Mouse and his famous Pirate Crew. Play, dance and acquire all the pirate skills needed to become an official member of Mickey's Pirate Crew! (Weather Permitting)



ADULT ACTIVITY HIGHLIGHTS



SENSES SPA FITNESS CLASSES & SEMINARS

Metabolic Assessment - Senses Fitness Center - 7:00 a.m.
Body Sculpt Boot Camp - Goofy's Sports Deck - 8:00 a.m.
Wake Up & Stretch Class - Senses Fitness Center - 9:00 a.m.
Group Cycling - Senses Fitness Center - 11:15 a.m.
How to Increase Your Metabolism - Senses Fitness Center - 2:00 p.m.
Go-d Feet Seminar: Relieving Back Pain - Senses Fitness Center - 3:30 p.m.
Yoga - Senses Fitness Center - 4:30 p.m.

TASTING CLASSES

Martini Tasting (21+) - Meridian (Pre Book, Nom. Fee) - 4:00 p.m.
Mixology (21+) - Skyline (Pre Book, Nom. Fee) - 4:00 p.m.
Rum Tasting (21+) - District Lounge (Pre Book, Nom. Fee) - 4:30 p.m.
Cognac Tasting (21+) - Meridian (Pre Book, Nom. Fee) - 10:00 p.m.
 Please make reservations for tastings at Guest Services for a nominal fee. Tasting Seminars are only for Guests 21 and Older.



CLUB 18*21 - MINI GOLF

Goofy's Sports Deck, Deck 13, Aft - 4:45 p.m.

CLUB 18*21 - MIXER

Currents, Deck 13, Forward - 10:00 p.m.

Club 18*21 is an exclusive gathering for young adult Guests. Come meet some of your fellow cruisers and share stories of your cruise thus far, before we head up on deck for Club Pirate.

MAKING OF THE DREAM

Evolution, Deck 4, Aft - 2:00 p.m.

Explore the origins of Disney Cruise Line and the latest and greatest innovations conjured especially for the Disney Dream in this fascinating and entertaining behind-the-scenes program.

ART OF THE THEME SHOW TOUR

Meet at Meridian, Deck 12, Aft - 2:45 p.m.

Join us on a guided ship tour and discover the key ingredients that make the Disney Dream cruise ship one-of-a-kind.

TV TUNES TRIVIA

687 Pub, Deck 4, Aft - 5:30 p.m.

Determine just how much you know about your television theme tunes.

DOUBLE UP JACKPOT BINGO



D Lounge, Deck 4, Midship

Card Sales - 4:00 p.m.

Game Starts - 4:15 p.m.

Special double up session: All electronic cards purchased will be doubled! The snowball jackpot continues to grow and could be won today!

YOUTH ACTIVITIES HIGHLIGHTS

DINE & PLAY

A convenience for families dining at 8:15 p.m., our Youth Activities Counselors will be available at 9:15 p.m. at the entrance of Royal Palace, Enchanted Garden and Animator's Palate dining rooms to bring registered children to join the fun in the Youth Activity areas.



Deck 5, Midship (7-5864) 9:00 a.m. - 12:00 mid

OPEN HOUSE

8:00 a.m. - 9:00 a.m.

Your chance to see our toddler space, It's A Small World Nursery.



Deck 5, Midship (7-1440) 11:30 a.m. - 12:00 mid
(3 - 12 years old)

MICKEY'S PUZZLE PLAYTIME

9:30 a.m.

Come and Play with Mickey & friends as they share their favorite games, puzzles and dances!

SO YOU WANT TO BE A PIRATE?

1:00 p.m. & 6:15 p.m.

Have you learned about life on the high seas? Do you have what it takes to be a pirate? Join Captain Hook and friends to find out!



Deck 5, Midship (7-1445) 9:00 a.m. - 1:00 a.m.
(3 - 12 years old)

STITCH'S ADVENTURE SQUAD

1:00 p.m.

Stitch, everyone's favorite alien, is making an appearance to share some of his mischievous games and activities.

SUPER SLOPPY SCIENCE

4:00 p.m. & 8:30 p.m.

Join Professor Make-O-Mess in some of the most extreme experiments you will ever see in the world of Super Sloppy Science!



Deck 13, Midship (7-9743) 10:00 a.m. - 1:00 a.m.
(11 - 14 years old)

A PIRATE'S LIFE FOR ME

11:45 p.m.

Yo ho, yo ho, a Pirate's Life for Me! Aarrgh me mateys! Put your knowledge to the test!

ANYONE CAN COOK

7:15 p.m.

Anyone can cook as we work together to create some of our favorite treats.



Entrance on Deck 4, Forward (7-9417)
(14 - 17 years old)
11:00 a.m. - 2:00 a.m.

GHOST VOYAGERS

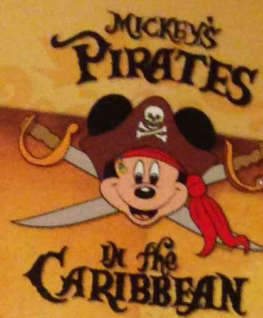
12:30 a.m.

The ship has come upon some mysterious waters and strange things are afoot. Join a paranormal expert to help investigate the area and track down any evidence of ghostly beings on the ship.

SUPER SLOPPY SCIENCE

5:45 p.m.

Join Professor Make-O-Mess in some of the most extreme experiments you will ever see in the world of Super Sloppy Science!



7:45 - 8:05 p.m.

Pirate Games start at 7:30 p.m.
Deck Stage, Deck 11 & 12, Midship

It's a Pirate Celebration, me hearties!
Come experience all the pirate fun alongside Captain Mickey Mouse and his famous Pirate Crew.
(Weather Permitting)

Hunt Fer Jack
10:30 p.m.

Deck 11 & 12, Midship
Does Captain Jack Sparrow have what it takes to outwit his fellow pirates and save the Golden Gauntlet? Find out as we, 'Hunt Fer Jack'!

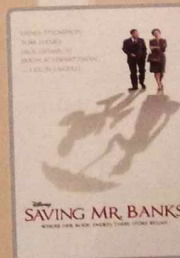
Club Pirate

Deck 11 & 12, Midship

If ye be a fan of Pirates of the Caribbean, tis time to revel in the night at the hottest dance club in all the seven seas with Guest DJ Randy
(Immediately following Hunt Fer Jack)



BUENA VISTA THEATRE



11:30 a.m.
Duration: 2 hrs 5 mins
Rating: PG-13



2:15 p.m.
Duration: 1 hr 48 mins
Rating: PG

DOLBY 3D



5:45 p.m. & 8:15 p.m.
Duration: 1 hr 48 mins
Rating: PG



11:00 p.m.
Duration: 1 hr 51 mins
Rating: PG-13

MORE TO ENJOY WHILE ONBOARD

PLAN YOUR NEXT GETAWAY NOW

Our 3- and 4-night Bahamian Cruises are a perfect way to get an instant tropical recharge! Departing from Miami or Port Canaveral, most Bahamian cruises include a stop at Disney's private island, Castaway Cay. Visit the Future Cruise Sales Desk today and ask about our special onboard booking offer.

NASSAU SHOPPING ASHORE INFORMATION

8:00 a.m. to 10:00 a.m. Port and Shopping Desk, Deck 4, Midship. This is your last chance to see Scott and Ashley! Make sure to stop by and see Scott and Ashley to collect your free savings ashore kit and VIP cards before going ashore.

DISNEY VACATION CLUB® GROUP PREVIEW

Want to learn more about taking magical vacations year after year? Please see a Disney Vacation Club representative on Deck 4, Midship, or call 7-2805 from your stateroom phone for more information about our interactive group presentation.



SENSES
Spa & Salon

PAMPER PACKAGE

50 minute full body Swedish massage, foot and ankle massage, Indian scalp massage and 25 minute facial.
75 minute pamper for \$149.

Senses Spa, Deck 11, Forward, Ext 7-1465

PROVENANCE GEMS PRESENTS:

"GEMSTONE OF THE NEW MILLENNIUM"

Amazingly beautiful, exotic and rare - zultanite is an extraordinary color-change gemstone. Like rhyolite, zultanite is so rare that it is only found in one location worldwide, high in Turkey's Anatolian Mountains.

A rising star in fine jewelry and exclusive to Provenance Gems.

WHITE CAPS

Deck 3, Forward



Shutters

PROFESSIONAL PORTRAITS

Lobby Atrium, Deck 3, Midship

Lifestyle & Moon Portrait - Six Guests maximum

5:00 p.m. - 6:00 p.m., 7:15 p.m. - 8:30 p.m. & 9:30 p.m. - 10:15 p.m.

Grand Staircase - Groups accommodated

7:15 p.m. - 8:30 p.m.

Please note that photos are available for viewing on our interactive photo kiosks approximately three hours after being taken and are only available for purchase during this cruise.

ONBOARD AIRLINE CHECK IN

If you would like to have your boarding passes printed for you onboard and have your luggage taken to the airport for you, today at 8:00 p.m. is the last chance to enroll. If you have Disney Cruise Line airport transfer to Orlando International Airport and fly with one of the participating airlines. Please stop at Guest Services Desk, Deck 3, Midship.

FINE DINING RESERVATIONS

Treat yourself to the ultimate culinary experience at sea. At Remy and Palo the enchantment of sea meets with elegance for a once-in-a-lifetime dining experience. Service/Cover charges will apply, please call 7-9734 for reservations to secure the last available spots.

WIRELESS INTERNET: KEEPING YOU CONNECTED AT SEA

\$0.75 per minute, or save money by buying blocks of time. \$27.50 for 50 minutes, \$40 for 100 minutes and \$75 for 250 minutes. Wireless information sheets are available at Guest Services, Deck 3, Midship. Please note: Due to satellite connectivity, onboard internet service will be noticeably slower than you may be accustomed to and may at times be interrupted or unavailable.

Disney Cruise Line

PORT ADVENTURES

Welcome to Nassau, capital of the Bahamas. It is not too late to book an amazing adventure to Blue Lagoon Island, Atlantis, or you could book a snorkeling adventure. And don't forget, we will be arriving to Disney's Castaway Cay tomorrow, so plan ahead to ensure your first choice of adventure is available. Also, ask our team about the exclusive Getaway Packages, available onboard only.

All Port Adventures meet onboard the ship in Nassau.

Please check your tour tickets for meeting times and locations.

SHOPPING

VISTA GALLERY FINE ART

Be amazed by the bright colors and exciting patterns of Britto's interpretations of your favorite Disney characters. Also view pieces by our many artists that are part of the silent auction which will close on the final night of the cruise. Vista Gallery, Deck 4, Midship.

TAX AND DUTY FREE HIGHLIGHT

Explore the many collections of stunning jewelry available onboard by world renowned designers. Chamilia charms are a great way to carry memories with you wherever you go, featuring charms exclusive to Disney Cruise Line. Whitecaps, Deck 3, Forward.

NEW DISNEY CRUISE LINE COMPASS COLLECTION MERCHANDISE

Commemorate your Disney cruise with the new nautical themed Disney Cruise Line merchandise from the Compass collection. Step into Sea Treasures, Deck 3 Forward, for the wide selection of Compass items including hats, t-shirts, and a fleece blanket.

BEAUTIFULLY DISNEY

Captivate your mind with Beautifully Disney, a new collection of cosmetics and beauty products exclusive to Disney Parks. The first of many collections from Beautifully Disney, Wickedly Beautiful, takes you into a world of good versus evil, where soft and deep lacquer crèmes shimmer with glitter, richly unite to create modern interpretations of Snow White, Cinderella, Ariel, Aurora, Evil Queen, Lady Tremaine, Ursula, and Maleficent. Whitecaps, Deck 3, Forward.

PIRATE TRANSFORMATIONS WITH SKULLS & SCURRY

Pirates have taken over the Disney Dream and are looking for rough scallywags to join their crew! Guests ages 3 and up will have the opportunity to be transformed into plundering pirates with Skulls & Scurry in time for Pirate Night. Transformations will begin at 5:00 p.m. at Whozits & Whatzits. Deck 11, Midship. All other pirate gear can be found tonight at Mickey's Mainsail, Deck 3, Forward.

Due to port regulations, when the ship is docked, the stores will remain closed.

IMPORTANT INFORMATION

Security Notices

All Guests (including children) who wish to disembark the ship are required to present their ID in the "World card" or the gangway. A photo ID is also required by those Guests who are 18 years of age or older. Guests under the age of 18 are required to have a parent, guardian or other responsible adult sign an authorization form at the Guest Services Desk if there will be no go ashore accompanied or with only visit from another shoreperson.

Cold and Flu Reminder

Please wash hands frequently and thoroughly, particularly before meals. Contact the Health Center by dialing 7-1923, should anyone in your party become ill.

Corridor Quiet Hours

As a courtesy to all our Guests, please recognize quiet hallway hours from 10:00 p.m. till 8:00 a.m.

Inclement Weather

For the safety of all Guests, outdoor events may be changed due to unforeseen weather conditions.

Environmental Message

With Disney's commitment to the environment, please refrain from throwing anything over the ship's side. Thank you!

No Reserved Seats Policy

As a courtesy to all our Guests, we kindly advise that the saving of seats is not permitted in the Walt Disney Theatre, and the saving of the sun loungers is not permitted on Deck 11, 12 and 13. Items left unattended will be returned to lost and found at Guest Services, Deck 3, Midship.

Smoking

For the comfort of our guests the following areas are designated as Smoking areas:

- Deck 13, Forward, port side, by "Currents"
- Deck 12, Aft, port side outdoor area that is accessible through the Meridian Lounge
- Deck 4, Aft, port side from 6:00 p.m. to 6:00 a.m. only (all of Deck 4 is no smoking from 6:00 a.m. to 6:00 p.m.)

- Smoking is prohibited inside all guest staterooms and on stateroom verandahs. Guests found smoking in their staterooms or on their verandahs will be charged a \$250 stateroom recovery fee. Electronic cigarettes may only be used in designated smoking areas.

Walt Disney Theatre

Theatrical performances may use artificial fog, strobe lights, pyrotechnics and other special effects. For the safety of our performers and the comfort of those around you, the use of any photography, video recording devices or any electronic equipment is prohibited.

Verandah Safety

Please do not leave any combustible materials on your balcony when not present in your stateroom for safety reasons.

Morning	8:30	8:45	9:00	9:15	9:30	9:45	10:00	10:15	10:30	10:45	11:00	11:15	11:30	11:45	12:00	12:15	12:30	12:45	1:00	1:15	1:30			
FUNNEL VISION	Snow White (G) Funnel Vision							The Emperor's New Groove (G) Funnel Vision							Hercules (G) Funnel Vision									
BUENA VISTA THEATRE															Saving Mr. Banks (PG-13) Duration: 2 Hours 5 Minutes									
CHARACTER			Minnie Dk 4, Balcony			Tinker Bell Lobby Atrium (V)																		
			Princess Gathering Lobby Atrium			Aladdin Dk 4, Balcony			Minnie Dk 4, Balcony															
FUN FOR ALL AGES	Last Minute Shopping Advice Port & Shopping Desk						Youth Activities Open House Vibe						Making of the Dream Evolution				Disney Cruise Line Trivia 687 Pub		Family Crafts D Lounge					
	Open House It's A Small World Nursery < Starts at 8:00 a.m.		Youth Activities Open House Disney's Oceaneer Club																					
			Youth Activities Open House Edge				Midship Detective Agency Deck 5, Midship																	
ADULTS	Friends of Bill W. Outlook		Please refer to your Port Adventures tickets for meeting times and locations.										Group Cycling Senses Fitness Center								Sports Trivia 687 Pub			
			Wake Up & Stretch Class Senses Fitness Center		Books and Magazines available in Cove Cafe.										NCAA Football - Tennessee vs. Midshipmen 687 Pub (Subject to Satellite Availability)									
VIBE 14-17 YEARS OLD							Youth Activities Open House				Open for Teens													
EDGE 11-14 YEARS OLD							Youth Activities Open House				Animation Creations				Wii Challenge				Scavenger Hunt					
OCEANEER LAB 3-12 YEARS OLD			Animation Antics						Wacky Relays				Piston Cup Challenge				Lunch		Stitch's Adventure Squad					
OCEANEER CLUB 3-12 YEARS OLD			Youth Activities Open House										Big Top Fun Fest!				Lunch		So You Want to be a Pirate?					
			Mickey's Puzzle Playtime		Magic PlayFloor																			
Afternoon	1:45	2:00	2:15	2:30	2:45	3:00	3:15	3:30	3:45	4:00	4:15	4:30	4:45	5:00	5:15	5:30	5:45	6:00	6:15	6:30	6:45			
FUNNEL VISION									Disney Channel on Deck Funnel Vision				Pixar Short Films (G) Funnel Vision				The Little Mermaid (G) Funnel Vision							
BUENA VISTA THEATRE	Frozen (PG) Duration: 1 Hour 48 Minutes																Frozen (PG) Duration: 1 Hour 48 Minutes							
CHARACTER									Disney Friends Lobby Atrium				Peter Pan Dk 4, Balcony				Pirate Minnie Mouse Lobby Atrium (P)				Tinker Bell Lobby Atrium (V)			
									Pirate Mickey Mouse Deck 4, Balcony								Tinker Bell Lobby Atrium (V)				Captain Jack Sparrow D Lounge			
FUN FOR ALL AGES	Chip-It Golf (12+) Lobby Atrium		Disney ANIMATION Creating A Character D Lounge		Pictionary Challenge D Lounge		Disney Channel on Deck Deck Stage		Bingo Pre Sales		Double Up Jackpot BINGO D Lounge		Midship Detective Agency Deck 5, Midship		Villains Wait Disney Theatre						A Pirate's Life For Me D Lounge			
									Pirate Trivia District Lounge		Disney Vacation Club Group Preview Evolution													
ADULTS	Making of the Dream Evolution		Art of The Theme Show Tour Meet at Meridian						Mixology (21+) Skyline (Pre Book, Nom. Fee)		Club 18*21 - Mini Golf Goofy's Sports Deck		Live Piano with Tom Scott District Lounge								Youth Activities Open House Vibe			
	How to Increase Your Metabolism Senses Fitness Center				Relieving Back Pain Senses Spa and Salon				Martini Tasting (21+) Meridian (Pre Book, Nom. Fee)		Yoga Senses Fitness Center		TV Tunes Trivia 687 Pub								Open House			
VIBE 14-17 YEARS OLD	Ice Cream Social				Sun Deck Fun								Gingerbread Man Decorating		Sports Deck Fun		Super Sloppy Science		A Pirate's Life For Me					
EDGE 11-14 YEARS OLD					Animation Antics								Gender Wars		Sports Deck Fun		GAGA Ball							
OCEANEER LAB 3-12 YEARS OLD	Get the Hook				Magic PlayFloor				Youth Activities Open House								Dinner		A Pirate's Life For Me					
									Super Sloppy Science															
OCEANEER CLUB 3-12 YEARS OLD	Aloha Luau				Cruisin' with Crush				Little Einstein's Adventure				Toy Story Boot Camp				Dinner		So You Want to be a Pirate?					
Evening	7:00	7:15	7:30	7:45	8:00	8:15	8:30	8:45	9:00	9:15	9:30	9:45	10:00	10:15	10:30	10:45	11:00	11:15	11:30	11:45	12:00			
FUNNEL VISION	Mickey's PITC Funnel Vision				Muppet Treasure Island (G) Funnel Vision								Hunt For Jack & Club Pirate Funnel Vision				Pirates of the Caribbean I (PG-13) Funnel Vision							
BUENA VISTA THEATRE					Frozen (PG) Duration: 1 Hour 48 Minutes												Thor: The Dark World (PG-13) Duration: 1 Hour 51 Minutes							
CHARACTER					Mickey's Pirates Deck Stage								Daisy Lobby Atrium (P)				Tinker Bell Lobby Atrium (V)							
													Goofy Preludes				Hook & Smee Preludes							
FUN FOR ALL AGES	Youth Activities Open House Vibe		Pirate Games Deck Stage, Deck 11, Midship		Villains Wait Disney Theatre				A Pirate's Life For Me D Lounge		HUNT FOR JACK & CLUB PIRATE Deck Stage, Deck 11, Midship		Live Music with Matt Bruno Deck 12, Forward		NCAA Football - Arizona State Sun Devils vs. Texas Tech Red Raiders Currents <10:15 p.m. 687 Pub (Subject to Satellite Availability)		Dreamers LIVE Evolution		Krazy Karaoke followed by Guest DJ Randy					
	Tom Scott LIVE District Lounge								Pirate Trivia D Lounge		Live Music with Matt Bruno Deck 12, Forward													
ADULTS	NCAA Football - Oregon Ducks vs. Texas Longhorns <6:45 p.m. 687 Pub (Subject to Satellite Availability)				Live Music with the Dreamers District Lounge				Live Piano with Tom Scott District Lounge				Dreamers LIVE District Lounge		Cognac Tasting (21+) Meridian (Pre Book, Nom. Fee)		Dreamers LIVE District Lounge		Gender Wars		A Pirate's Life For Me			
									Pump It Up				That's Hilarious		Crowning of the Couch Potato						A Pirate's Life For Me			
VIBE 14-17 YEARS OLD	Youth Activities Open House				Teen AquaDuck										Pirates of the Caribbean: Tides of Fortune		Magic PlayFloor							
EDGE 11-14 YEARS OLD	Anyone Can Cook				Tween AquaDuck																			
OCEANEER LAB 3-12 YEARS OLD	Anyone Can Cook								Super Sloppy Science				GAGA Ball											
OCEANEER CLUB 3-12 YEARS OLD	Magic PlayFloor								Once Upon a Time				Camp Rocking Out!											

MONDAY, DECEMBER 30, 2013 - NASSAU, BAHAMAS

BUENA VISTA THEATRE

DOLBY 3D



11:30 a.m.
Duration:
2 hrs 5 mins
Rating: PG-13



2:15 p.m.
Duration:
1 hr 48 mins
Rating: PG



5:45 p.m. & 8:15 p.m.
Duration:
1 hr 48 mins
Rating: PG



11:00 p.m.
Duration:
1 hr 51 mins
Rating: PG-13

Character Appearances

PRINCESS GATHERING
Lobby Atrium - 9:00 a.m.

PRINCESS MINNIE
Deck 4, Balcony
9:00 a.m. & 10:15 a.m.

ALADDIN
Deck 4, Balcony - 9:30 a.m.

TINKER BELL
Lobby Atrium (V)
9:30 a.m., 5:15 p.m.
& 9:45 p.m.

PIRATE MICKEY MOUSE
Deck 4, Balcony
3:30 p.m., 5:15 p.m.
& 9:30 p.m.

DISNEY FRIENDS
Lobby Atrium - 3:30 p.m.

PETER PAN
Deck 4, Balcony - 4:45 p.m.

PIRATE MINNIE MOUSE
Lobby Atrium (P) - 5:00 p.m.

CAPTAIN JACK SPARROW
D Lounge - 5:30 p.m.

MICKEY'S PIRATES
Deck Stage - 7:45 p.m.

PIRATE DAISY DUCK
Lobby Atrium (P) - 9:30 p.m.

PIRATE GOOFOY
Preludes - 9:30 p.m.

**CAPTAIN HOOK
& MR SMEE**
Preludes - 10:00 p.m.

PIRATE DONALD
Lobby Atrium (P)
10:00 p.m.



(H) Hallway - (S) Starboard Side - (P) Port Side - (V) Vestibule
For details of daily Disney character appearances, refer to the character line on
board in the Lobby Atrium.

YOUTH ACTIVITIES THEMED EXPERIENCES

CLUBHOUSE SERIES
focuses on movement and
features content which appeals
to younger children.

STORYBOOK SERIES
is designed with a strong
connection to the Disney
classic stories.

JUMP UP! SERIES
includes large group games &
movement-oriented activities.

CREATE & INVENT SERIES
will have a tactile focus allowing
children to create and admire
their work.

OPEN HOUSE

activities for families, adults and children of all ages to enjoy together.

WIN THE SPOTLIGHT SERIES
focuses on children's stage
presence with lots of activities
and enthusiasm.

SOLVE IT! SERIES
are less active, but will challenge
children with problem/solutions-
based activities.

SHIP DIRECTORY

YOUTH ACTIVITIES

DISNEY'S OCEANEER CLUB	DECK 5, MID	11:30 AM - 12:00 MID
DISNEY'S OCEANEER LAB	DECK 5, MID	9:00 AM - 1:00 AM
EDGE	DECK 13, MID	10:00 AM - 1:00 AM
VIBE	DECK 4, FWD	11:00 AM - 2:00 AM
IT'S A SMALL WORLD NURSERY	DECK 5, MID	9:00 AM - 12:00 MID

POOLS & MORE

* Children under 12 must have adult supervision in pool areas.

AQUADUCK	DECK 12, MID	9:00 AM - 11:00 PM
DONALD'S POOL	DECK 11, MID	9:00 AM - 6:00 PM
		8:00 PM - 10:00 PM
MICKEY'S POOL	DECK 11, MID	6:00 AM - 12:00 MID
MICKEY'S SLIDE	DECK 11, MID	9:00 AM - 6:00 PM
NEMO'S REEF	DECK 11, MID	9:00 AM - 6:00 PM
QUIET COVE POOL	DECK 11, FWD	6:00 AM - 12:00 MID

RECREATION

GOLF/SPORTS SIMULATORS	DECK 13, AFT	11:00 AM - 6:00 PM
GOOFOY GOLF	DECK 13, AFT	8:00 AM - 8:30 PM
GOOFOY'S SPORTS DECK	DECK 13, AFT	12:00 MID - 6:00 PM
MIDSHIP DETECTIVE AGENCY	DECK 5, MID	8:00 AM - 11:00 PM
PORT ADVENTURES DESK	DECK 5, MID	8:00 AM - 12:00 PM
		7:00 PM - 8:30 PM
SENSES FITNESS CENTER	DECK 11, FWD	6:00 AM - 10:00 PM

GENERAL INFORMATION

ARR-CADE	DECK 11, AFT	24 HOURS
BUENA VISTA THEATRE	DECK 4 & 5, MID	SHOWTIMES
DISNEY VACATION CLUB	DECK 4, MID	9:00 AM - 11:00 AM
		5:30 PM - 10:00 PM
FUTURE CRUISE SALES DESK	DECK 4, MID	8:00 AM - 10:00 AM
		3:00 PM - 9:00 PM
GUEST SERVICES	DECK 3, MID	24 HOURS
HAIRBRAIDING	DECK 11, MID	4:30 PM - 10:00 PM
MEDICAL HEALTH CENTER	DECK 1, FWD	9:30 AM - 11:00 AM
		4:30 PM - 7:00 PM
PORT & SHOPPING DESK	DECK 4, MID	8:00 AM - 10:00 AM
PRELUDES	DECK 3, FWD	5:45 PM - 6:30 PM
		8:00 PM - 8:45 PM
SENSES SPA AND SALON	DECK 11, FWD	8:00 AM - 10:00 PM
SHUTTERS PHOTO GALLERY	DECK 4, MID	5:00 PM - 11:00 PM
WALT DISNEY THEATRE	DECK 3 & 4, FWD	SHOWTIMES

SHOPPING

MICKEY'S MAINSAIL	DECK 3, FWD	7:00 PM - 11:00 PM
SEA TREASURES	DECK 3, FWD	7:00 PM - 11:00 PM
QUACKS	DECK 11, MID	7:00 PM - 11:00 PM
VISTA GALLERY	DECK 3, FWD	7:00 PM - 11:00 PM
WHITECAPS	DECK 3, FWD	7:00 PM - 11:00 PM
WHOZITS & WHATZITS	DECK 11, MID	6:30 PM - 11:00 PM

DUE TO PORT REGULATIONS, WHEN THE SHIP IS DOCKED,
THE STORES MUST REMAIN CLOSED.

DINNER MENU

Animator's Palate: Pacific Rim Cassino
Enchanted Garden: Continental Market
Royal Palace: French Dinner
Dining Times: 5:45 p.m. & 8:15 p.m.

DRINK OF THE DAY

Yellow Tail
(Moderate)
Pardon Sissy
(Non-Alcoholic)

WEATHER FORECAST

Monday: Sunny
High: 77° / 25° C
Tuesday:
Partly Sunny
High: 71° / 22° C

Evening Attire Pirate or Cruise Casual

DINING & LOUNGES

BREAKFAST

CABANAS CONTINENTAL	DECK 11, AFT	7:00 AM - 7:30 AM
CABANAS	DECK 11, AFT	7:30 AM - 10:30 AM
ENCHANTED GARDEN	DECK 2, MID	8:30 AM - 10:00 AM
ROYAL PALACE	DECK 3, MID	8:00 AM - 9:30 AM

LUNCH

CABANAS	DECK 11, AFT	12:00 PM - 2:00 PM
CABANAS - PIZZA	DECK 11, AFT	2:00 PM - 4:00 PM
FILLMORE'S FAVORITES	DECK 11, MID	10:30 AM - 6:00 PM
LUIGI'S PIZZA	DECK 11, MID	10:30 AM - 6:00 PM
ROYAL PALACE	DECK 3, MID	12:00 PM - 1:30 PM
TOW MATER'S GRILL	DECK 11, MID	10:30 AM - 6:00 PM

DINNER

ANIMATOR'S PALATE	DECK 3, AFT	5:45 PM & 8:15 PM
CABANAS TABLE SERVICE	DECK 11, AFT	6:30 PM - 8:30 PM
ENCHANTED GARDEN	DECK 2, MID	5:45 PM & 8:15 PM
ROYAL PALACE	DECK 3, MID	5:45 PM & 8:15 PM
PALO & REMY	DECK 12, AFT	6:00 PM - 9:00 PM

(RESERVATIONS REQUIRED & COVER CHARGE APPLICABLE, DIAL #7-9734)

LATE NIGHT SNACKS

CABANAS - PIRATE'S BUFFET	DECK 11, AFT	10:45 PM - 11:30 PM
LUIGI'S PIZZA	DECK 11, MID	9:30 PM - 12:30 AM

ADDED FEATURES

BEVERAGE STATION	DECK 11, MID	24 HOURS
EYE SCREAM	DECK 11, MID	11:00 AM - 12:30 AM
ROOM SERVICE	DIAL 0	24 HOURS

ENTERTAINMENT - LOUNGES - BARS

Adults must be 21 and older to consume alcoholic beverages.

687 PUB (18+ AFTER 9:00 PM)	DECK 4, AFT	4:00 PM - 12:00 MID
BON VOYAGE	DECK 3, MID	9:00 AM - 11:00 PM
COVE BAR (18+)	DECK 11, FWD	10:30 AM - 11:00 PM
COVE CAFE (18+)	DECK 11, FWD	7:00 AM - 12:00 MID
CURRENTS (18+)	DECK 13, FWD	11:00 AM - 12:00 MID
D LOUNGE	DECK 4, MID	SHOWTIMES
DISTRICT LOUNGE (18+ AFTER 9:00 PM)	DECK 4, AFT	4:00 PM - 12:00 MID
EVOLUTION (18+)	DECK 4, AFT	9:30 PM - 2:00 AM
FROZONE TREATS	DECK 11, MID	11:00 AM - 11:00 PM
MERIDIAN (18+)	DECK 12, AFT	5:00 PM - 12:00 MID
OUTLOOK	DECK 14, MID	
PINK (18+)	DECK 4, AFT	5:00 PM - 12:00 MID
SKYLINE (18+)	DECK 4, AFT	5:00 PM - 12:00 MID
VISTA CAFE	DECK 4, MID	7:30 AM - 11:00 PM
WAVES	DECK 12, AFT	12:00 PM - 7:00 PM

Consumers who order raw or partially cooked, ready-to-eat food of animal origin, are hereby
informed that the food is not sufficiently cooked to ensure its safety.

All Ashore: Approx. 9:30 a.m.
All Aboard: 5:45 p.m.

SHIP'S AGENT IN NASSAU

Nassau, Bahamas
R.H. Curry & Company, 303 Shirley St.,
P.O. Box NS168 Nassau, Bahamas
242-323-8425 or 242-357-9218

IMPORTANT NUMBERS

Fire/Security: 7-3001
Medical Emergency: 7-3000
Health Center: 7-1923