

# PERSONAL NAVIGATOR

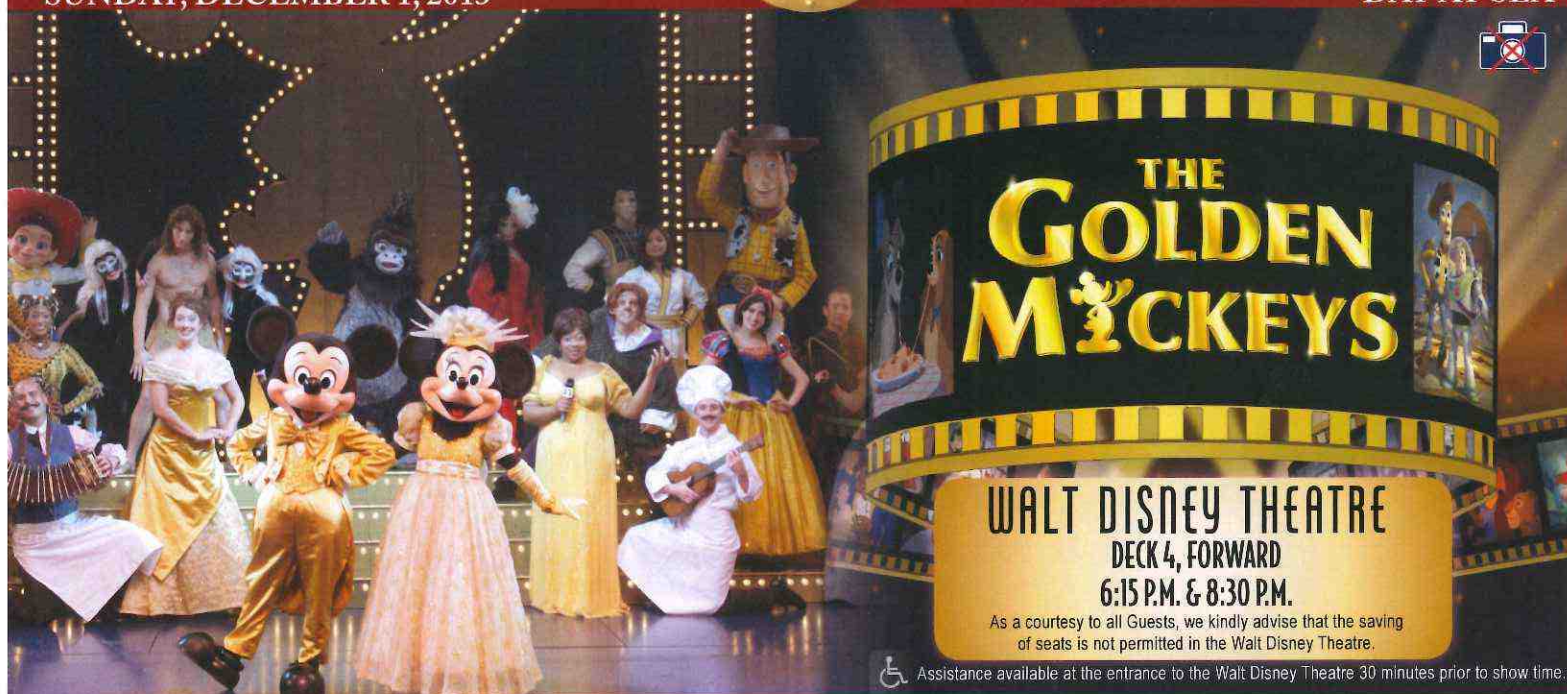


Sunrise: 6:37 a.m. Sunset: 5:11 p.m.  
Evening Attire: Formal

Sunday: Sunny High: 63°F/17°C

SUNDAY, DECEMBER 1, 2013

DAY AT SEA



**WALT DISNEY THEATRE**  
DECK 4, FORWARD  
6:15 P.M. & 8:30 P.M.

As a courtesy to all Guests, we kindly advise that the saving of seats is not permitted in the Walt Disney Theatre.

Assistance available at the entrance to the Walt Disney Theatre 30 minutes prior to show time.

## Disney WONDER Fun Facts

**Tonnage:** 83,308 gross, 53.899 net

**Length Overall:** 294m / 964ft

(height of Eiffel Tower is 986ft)

**Maximum Speed:** 26 knots (30 miles per hour)

### Important Dates

**Keel Laid:** May 15, 1997

**Launch Date:** July 14, 1999

**Inaugural Cruise:** August 15, 1999

\* The anchor of the Disney Wonder weighs 34,250 lbs (15,569 kg) - the same weight as three elephants.

\* Over 50 nationalities make up the 1000 Crew members onboard.

\* Steamboat Willie stands proudly 10 ft tall on the bow of the ship. There are other characters in the artwork around him.

\* Donald and his nephew Huey hang painting the finishing touches on the stern.



### CAPTAIN'S WELCOME RECEPTION

Enjoy a cocktail and mingle with the Officers of the Disney Wonder. There's also an exclusive photo opportunity with Captain Fabian.

Lobby Atrium,  
Deck 3, Midship,  
5:15 p.m. & 7:30 p.m.

## Don't Miss:

### Game Show: The Feud

Studio Sea, Deck 4, Midship - 7:30 p.m.

"Survey Says" you'll have a fantastic time with our version of a classic game.

### The Golden Mickeys After Party

Studio Sea, Deck 4, Midship - 9:30 p.m.

Join your Cruise Staff team for the awards celebration after party featuring great dance music for the entire family.

### 80's Flashback (18+)

Wavebands, Deck 3, Forward - 10:45 p.m.

The 80's are back! Join your Cruise Staff team, in testing your 80's knowledge in this high energy 80's revival.

### Hanukkah Service

Wavebands, Deck 3, Forward - 5:15 p.m.

With Rabbi Rachael Bregman



### TIME ZONE CHANGE

Remember to turn your clocks  
**FORWARD 1 HOUR** upon retiring  
on **SUNDAY** evening, or first thing  
**MONDAY** morning.



Book your next cruise onboard and save 10% on prevailing rates as quoted on [disneycruise.com](http://disneycruise.com). Plus, get an onboard credit and special deposit rate! Visit the Future Cruise Sales Desk for more information.

## DINNER MENU

Animator's Palate: Golden Mickeys  
Parrot Cay: Golden Mickeys  
Triton's: Golden Mickeys

## DRINK OF THE DAY

Cool Breeze (Alcoholic)  
Lava Smoothies (Non Alcoholic)

### IMPORTANT NUMBERS

Fire/Security: 7-3001  
Medical Emergency: 7-3000  
Health Center: 7-1923



# FUN FOR ALL AGES HIGHLIGHTS

## INTERDENOMINATIONAL SERVICE

*Cadillac Lounge, Deck 3, Forward - 8:30 a.m.*

A quiet space reserved for Guests who wish to come together to worship.



## WAKE UP WITH DISNEY JUNIOR

*Promenade Lounge, Deck 3, Aft - 9:00 a.m.*

What happens when you experience unlimited fun with your favorite Disney Junior shows? You get an exciting dance party designed especially for preschoolers ages seven and under.

## GAME SHOW: THE WHEEL

*Promenade Lounge, Deck 3, Aft - 9:30 a.m.*

A special version of this popular TV game show.

## DISNEY MOVIE CHALLENGE POOLSIDE

*Goofy's Pool Stage, Deck 9, Midship - 12:15 p.m.*

So you like movies? And you like bingo? This deck party has them both! Come on out to watch all your favorite movie clips and just maybe your team will win the opportunity to choose the movie played by the pool today!



## MICKEY 200

*Wavebands, Deck 3, Forward - 1:45 p.m.*

Don't eat your vegetables... race them in this wild and wacky charge to the finish line. May the best veggie win! (Limited Availability)



## CHIP-IT GOLF (12+)

*Lobby Atrium, Deck 3, Midship - 3:00 p.m.*

It's par for the course for our Guests 12 and older to compete on our special "greens" in this fun tournament.

## FAMILY SUPERSTAR KARAOKE

*Studio Sea, Deck 4, Midship - 10:15 p.m.*

Join your Cruise Staff in Studio Sea tonight and sing along to your favorite song - fun for everyone.



# ADULT ACTIVITY HIGHLIGHTS

## VISTA SPA FITNESS CLASSES & SEMINARS

*Sunrise Stretch - Vista Spa Fitness Center - 7:00 a.m.*

*Body Sculpt Boot Camp (Nominal Fee) - Vista Spa Fitness Center - 8:30 a.m.*

*Tour De Cycle - Vista Spa Fitness Center - 9:00 a.m.*

*Inch Loss Made Easy With Ionithermi - Outlook Cafe - 10:15 a.m.*

*Detox for Health & Weight Loss - Outlook Cafe - 11:00 a.m.*

*Pamper Party - Outlook Cafe - 12:00 p.m.*

*How to Increase Your Metabolism - Outlook Cafe - 2:00 p.m.*



## TASTING CLASSES

*Wine Tasting (21+) - Cadillac Lounge - 12:00 p.m.*

*Martini Tasting (21+) - Cadillac Lounge - 2:00 p.m.*

*Tequila & Margarita Tasting (21+) - Cadillac Lounge - 4:00 p.m.*

*Cognac Tasting (21+) - Outlook Cafe - 10:30 p.m.*

Please make reservations for tastings at Guest Services for a nominal fee.

Tasting Seminars are only for Guests 21 and Older.



## LUNCH

*Parrot Cay, Deck 3, Aft - 12:15 p.m.*

## SOCIAL

*Divisions, Deck 3, Forward - 10:00 p.m.*

## 60'S MUSIC TRIVIA

*Divisions, Deck 3, Forward - 11:00 a.m.*

Let's step back in time as we test your 60's music knowledge with your Club Host.

## SINGLES' LUNCH

*Parrot Cay, Deck 3, Aft - 12:15 p.m.*

Single, single parent or just traveling alone? Join your Cruise Staff for an informal gathering for lunch.

## ART OF THE THEME SHOW TOUR

*Meet at Palo, Deck 10, Aft - 3:30 p.m.*

Join us on a guided ship tour and discover the key ingredients that make the Disney Wonder.

# DIAMOND JACKPOT BINGO

## Wavebands, Deck 3, Forward

**Card Sales - 10:45 a.m.**

**Game Starts - 11:00 a.m.**

Join us for 4 cash prize games and your chance to win a Diamond Pendant, courtesy of your Shopping Guide, Maureen! Everyone attending will also receive a voucher to collect a free Diamonds International charm bracelet!

# VISTA SPA JACKPOT BINGO

## Wavebands, Deck 3, Forward

**Card Sales - 3:45 p.m.**

**Game Starts - 4:00 p.m.**

Four CASH prizes to be won! Plus great spa prizes that will pamper you, including a mini facial and massages all courtesy of the Vista Spa and Salon. Serenity now!



# YOUTH ACTIVITIES HIGHLIGHTS

## DINE & PLAY

A convenience for families dining at 8:15 p.m., our Youth Activities Counselors will be available at 9:15 p.m. at the entrance of Triton's, Parrot Cay and Animator's Palate dining rooms to bring registered children to join the fun in the Oceaneer Club and Oceaneer Lab.



**Deck 5, Aft (7-18500) 9:00 a.m. - 11:00 p.m.**

Infants and Toddlers can enjoy toys and activities at Flounder's Reef Nursery. Reservations are first come, first served so please stop by!



**Deck 5, Midship (7-1440) (3 - 12 years old) 9:00 a.m. - 12:00 mid**

## TOY STORY BOOT CAMP

10:45 a.m.

Join Corporal Green in our own version of boot camp as we learn how to have fun - The Toy Story way!

## WHERE'S TINK?

7:30 p.m.

Tinker Bell is hiding and we need your help to follow clues around Captain Hook's ship to find her.



**Deck 5, Midship (7-1445) (3 - 12 years old) 9:00 a.m. - 12:00 mid**

## ANIMATION ANTICS

9:30 a.m.

Learn simple animation techniques and then put your new skills to use by drawing some of your favorite Disney Characters.

## MONSTROPOLIS MOST WANTED

7:30 p.m.

Have fun while you look for clues, play puzzle games, and find out which monster stole the children's door.



**Deck 2, Midship (7-5810) (11 - 14 years old)**

**9:00 a.m. - 12:00 mid**

## VILLAINOUS VENTURES

1:00 p.m.

The Disney villains have cast a spell on the ship and only you can break it. Teams must work together as they hunt for clues around the ship.

## HOLIDAY ANIMATION CELLS

8:00 p.m.

Learn what it takes to be a Disney Animator, then put your new skills to the test as you create your very own holiday animation cell.



**Deck 11, Midship (7-1456) (14 - 17 years old)**

**11:00 a.m. - 2:00 a.m.**

## DIVE INTO DJ'ING

4:00 p.m.

Hop on the turn tables and learn to scratch with Featured DJ RobertMichael.

## CAMP OUT

12:00 mid

You will enjoy a camp fire night out under the stars that is filled with games, adventures and lots of crazy surprises.

# BUENA VISTA THEATRE

## Today's Movies

**DOLBY 3D**



9:00 a.m.  
Duration:  
1 hr 43 mins  
Rating: G



2:00 p.m.  
Duration:  
1 hr 51 mins  
Rating: PG-13

**DOLBY 3D**



5:15 & 8:00 p.m.  
Duration:  
2 hrs 10 mins  
Rating: PG-13



10:30 p.m.  
Duration:  
1 hr 51 mins  
Rating: PG-13



## FAMILY VARIETY ACT

Featuring the  
Comedy & Magic  
of Scott Alexander,  
as he entertains the  
entire family in this  
fun-filled show.

**Wavebands,  
Deck 3, Forward,  
7:30 p.m.**



## ADULT VARIETY ACT

Featuring the  
Physical Comedy  
of Jeff Taveggia,  
as he entertains you  
in this adult  
exclusive show.

**Wavebands (18+),  
Deck 3, Forward,  
10:15 p.m.**

## YOUTH ACTIVITIES OPEN HOUSE

Open House is an opportunity for all to come and participate in a variety of exciting activities and free time in the Oceaneer Club, Oceaneer Lab, Flounder's Reef Nursery, Vibe and Edge throughout the cruise. During these times secured programming will still be offered in the other venue for those looking to check their children into care.

**Disney's Oceaneer Club: 9:00 a.m. - 10:15 a.m.  
Disney's Oceaneer Club: 5:00 p.m. - 7:00 p.m.**

**Edge: 9:00 a.m. - 12:00 p.m.  
Edge: 6:00 p.m. - 7:30 p.m.  
Vibe: 6:30 p.m. - 8:00 p.m.**



# MORE TO ENJOY WHILE ONBOARD



## DISNEY VACATION CLUB® GROUP PREVIEW

Want to learn more about taking magical vacations year after year? Please see a Disney Vacation Club representative on Deck 4, Midship, or call 7-2805 from your stateroom phone for more information about our interactive group presentation.



## PLAN YOUR NEXT DISNEY CRUISE LINE VACATION!

Book your next cruise today for the best availability and pricing. You'll save 10%, receive up to a \$200 onboard credit, and pay a reduced deposit! Visit the Future Cruise Sales Desk, Deck 4, Midship, or call 7-2848.

## PORT & SHOPPING INFORMATION

Learn about the incredible shopping in the Caribbean at the Port and Shopping Show at 12:30 p.m. in the Buena Vista Theatre, Deck 5, Aft. Everything will be covered from Diamonds to T-Shirts, Watches to Tanzanite. Then join Maureen at Diamond, Gemstone & Watch Seminar in Promenade Lounge, Deck 3, Aft at 3:30 p.m. Learn what makes a Diamond sparkle, the rarity of Ammolite and why Alexandrite changes color!



## VISTA SPA

Deck 9, Forward - Phone: 7-1465

## PAMPER PACKAGE

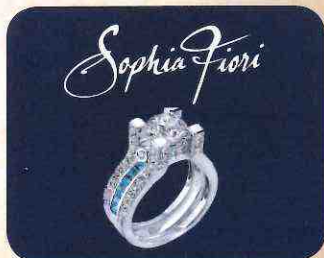
Indulge with a 50 min full body relaxing Swedish massage and 25 min Refreshing Spa facial with scalp massage and foot and ankle massage 75 minutes for only \$149.

## TODAY'S SHOPPING SPECIAL

Stop by Treasure Ketch to try on the world's most memorable white diamond pieces and commemorate your cruise. Ask the hosts about 50% savings off US retail.

## TREASURE KETCH

Deck 4, Forward



## FORMAL PORTRAITS TONIGHT!

Now that the family is dressed up and ready to enjoy the evening, capture the memories in your formal attire by visiting our professional portrait studios located in the Atrium, Deck 3, Midship. 5:00 p.m. - 6:00 p.m., 7:15 p.m. - 8:30 p.m. & 9:30 p.m. - 10:30 p.m.

*\*Please note that photos are available for viewing on our interactive photo kiosks approximately five hours after being taken and are only available for purchase during this cruise.*

## QUARTER MASTERS ARCADE

Demonstrate your cutting expertise at BARBERCUT and win an Ipod Nano or an Ipod Shuffle! Only at Quarter Masters Arcade, located on Deck 9, Midship, where the winners win.

## WIRELESS INTERNET: KEEPING YOU CONNECTED AT SEA

\$0.75 per minute or save money by buying blocks of time. \$55 for 100 minutes, \$100 for 250 minutes and \$150 for 500 minutes. Wireless information sheets are available at Guest Services, Deck 3, Midship, Internet Cafe, Deck 3, Aft, Cove Cafe, Deck 9, Midship and Outlook Cafe, Deck 10, Midship.

**Due to the technology involved and satellite connectivity, the onboard internet service will be noticeably slower than you may be accustomed to and might at times be interrupted or unavailable.**



The best way to explore our ports of call is through the eyes of a Port Adventure. Be adventurous and climb up Dunn's River Falls or explore the Green Grotto Caves in Falmouth. Why not swim with stingrays in Grand Cayman or explore the ruins in Cozumel. Stop by the Port Adventures Desk, Deck 3, Midship.

## SHOPPING

### ART GALLERY - THOMAS KINKADE PAINTINGS

Stop by the Art Gallery today to view our selection of Thomas Kinkade Limited Edition Disney paintings. While there, see if you can find some hidden characters in the artwork. Deck 4, Midship. Our Hostess is available between 7:00 p.m. and 9:00 p.m. for any hints!

### FREE BINGO CARD

Pick up your FREE Bingo card for the morning session with any purchases in Mickey's Mates or Treasure Ketch. Only available between 9:00 a.m. - 11:00 a.m.

### SOPHIA FIORI DIAMOND TRUNK SHOW

Sophia Fiori, Hollywood's first choice in diamonds has boarded the Disney Wonder to premier their new collection of white & colored diamonds worn at the Oscars, Golden Globes, Emmy and Grammy Awards. Stop by Treasure Ketch on Deck 4, Forward, and view this stunning collection.

### NEW DOONEY & BOURKE ONBOARD

Loved for their fine leather and unique designs, Dooney & Bourke creates styles that are sure to inspire. Visit Treasure Ketch and check out the new Dooney & Bourke handbags designed especially for Disney Cruise Line®. Deck 4, Forward.

### EVERYTHING PRINCESS AT MICKEY'S MATES

Are you cruising with a young, aspiring Princess? Stop by Mickey's Mates for all things Disney Princess including dresses and accessories. Whether your princess is inspired by Cinderella, Belle, Merida, or Princess Tiana, Mickey's Mates has everything you need to be royal ready! Deck 4, Midship.

### SOPHIA FIORI GUESS THE CARAT WEIGHT WITH CAROL

Come in to Guess the Carat Weight on a Sophia Fiori Diamond between 9:30 a.m. and 9:00 p.m. Whoever guesses the closest, wins a 5 carat Loose Midnight Sapphire and a pair of Sapphire Stud Earrings. The winner will be revealed at 9:45 p.m. in Treasure Ketch, Deck 4, Forward. Winner must be present.

## IMPORTANT INFORMATION

### Security Notice

All Guests (including Children) who wish to disembark or embark the ship are required to present their Key to the World card at the gangway. A photo ID is also required for those Guests who are 18 years of age or older. Guests under the age of 18 are required to have a parent, guardian or other responsible adult sign an authorization form at the Guest Service Desk if they wish to go ashore unaccompanied or with any adult from another stateroom.

### Sunscreen Advisory

Don't forget to apply sunscreen and insect repellent when going ashore.

### Cold and Flu Reminder

Please wash hands frequently and thoroughly, particularly before meals. Contact the Health Center by dialing 7-1923, should anyone in your party become ill.

### Inclement Weather

For the safety of all Guests, outdoor events may be changed due to unforeseen weather conditions.

### Corridor Quiet Hours

As a courtesy to all our Guests, please recognize quiet hallway hours from 10:00 p.m. til 8:00 a.m.

### Environmental Message

With Disney's commitment to the Environment please refrain from throwing anything over the Ship's side. Thank you.

### No Reserved Seats Policy

As a courtesy to all Guests we kindly advise that the saving of seats is not permitted in the Walt Disney Theatre, and the saving of the sun loungers is not permitted on Deck 9 and 10. Items left unattended will be returned to lost and found at Guest Services, Deck 3, Midship.

### Smoking

For the comfort of our guests, the following areas are designated as smoking areas:

- Deck 10, forward, Starboard side
- Deck 9, forward, Starboard side at Quiet Cove
- Deck 4, aft, port side from 6:00 p.m. to 6:00 a.m. only (all of Deck 4 is non-smoking from 6:00 a.m. to 6:00 p.m.)

Smoking is prohibited inside all guest staterooms and on stateroom verandahs. Guest found smoking in their staterooms or on their verandahs will be charged a \$250 stateroom recovery fee. Electronic cigarettes may only be used in designated smoking areas.

### Walt Disney Theatre

Theatrical performances may use artificial fog, strobe lights, pyrotechnics and other special effects. For the safety of our performers and the comfort of those around you, the use of any photography or video recording device or any electronic equipment is prohibited.

### Verandah Safety

Please do not leave any combustible materials on your balcony when not present in your stateroom for safety reasons.



 Symbol for activities that will be repeated during the cruise

along the dotted lines and take me with you  
so you don't miss any of the fun!

— FOLD —

 SOLVE IT! SERIES

 OPEN HOUSE  
 CREATE & INVENT SERIES  
 YOUR 101 SERIES

 COBBLESTONE SERIES  
 STORYBOOK SERIES



SUNDAY, DECEMBER 1, 2013 - DAY AT SEA

# BUENA VISTA THEATRE

DOLBY 3D

DOLBY 3D



9:00 a.m.  
Duration:  
1 hr 43 mins  
Rating: G



2:00 p.m.  
Duration:  
1 hr 51 mins  
Rating: PG-13



5:15 & 8:00 p.m.  
Duration:  
2 hrs 10 mins  
Rating: PG-13



10:30 p.m.  
Duration:  
1 hr 51 mins  
Rating: PG-13

## Character Appearances

### STITCH

Preludes - 8:30 a.m.

### CHIP & DALE

Preludes - 9:00 a.m.  
Deck 9, Gazebo - 3:30 p.m.

### MAX

Preludes - 9:30 a.m.

### PRINCESS GATHERING

Lobby Atrium - 11:30 a.m.

### DAISY DUCK

Preludes - 12:15 p.m.

### DONALD DUCK

Preludes - 12:45 p.m.

### MINNIE MOUSE

Deck 9, Gazebo - 3:00 p.m.  
Deck 4, Midship  
5:45 p.m. & 7:45 p.m.  
Lobby Atrium (P) - 9:45 p.m.



(P) - Port Side (S) - Starboard Side

Don't forget your Camera to capture those Magical Moments!  
Check here each day for Character appearances.  
For detailed Character appearance information, please dial 7-PALS or see the Character Information Board in the Lobby Atrium.  
Meet-and-Greets will be advertised for the length of time the line will be open. To avoid disappointment, please meet at start time of appearances.

## YOUTH ACTIVITIES THEMED EXPERIENCES

**CLUBHOUSE SERIES**  
focuses on movement and features content which appeals to younger children.

**STORYBOOK SERIES**  
is designed with a strong connection to the Disney classic stories.

**JUMP UP! SERIES**  
includes large group games & movement-oriented activities.

**CREATE & INVENT SERIES**  
will have a tactile focus allowing children to create and admire their work.

**IN THE SPOTLIGHT SERIES**  
focuses on children's stage presence with lots of activities and enthusiasm.

**SOLVE IT! SERIES**  
are less active, but will challenge children with problem/solutions-based activities.

### YOUTH ACTIVITIES OPEN HOUSE

Activities for families, adults and children of all ages to enjoy together.

## SHIP DIRECTORY

### YOUTH ACTIVITIES

|                         |              |                     |
|-------------------------|--------------|---------------------|
| DISNEY'S OCEANEER CLUB  | DECK 5, MID  | 9:00 AM - 12:00 MID |
| DISNEY'S OCEANEER LAB   | DECK 5, MID  | 9:00 AM - 12:00 MID |
| EDGE                    | DECK 2, MID  | 9:00 AM - 12:00 MID |
| VIBE                    | DECK 11, MID | 11:00 AM - 2:00 AM  |
| FLOUNDER'S REEF NURSERY | DECK 5, AFT  | 9:00 AM - 11:00 PM  |

### POOLS

Children under 12 years of age must have adult supervision in all pools.

|                      |             |                     |
|----------------------|-------------|---------------------|
| GOOFY'S POOL         | DECK 9, MID | 9:00 AM - 6:00 PM   |
|                      |             | 8:00 PM - 10:00 PM  |
| MICKEY'S POOL        | DECK 9, AFT | 8:00 AM - 10:00 PM  |
| MICKEY'S SLIDE       | DECK 9, AFT | 9:00 AM - 5:00 PM   |
| MICKEY'S SPLASH ZONE | DECK 9, AFT | 8:00 AM - 8:00 PM   |
| QUIET COVE POOL      | DECK 9, FWD | 6:00 AM - 12:00 MID |

### RECREATION

|                           |              |                    |
|---------------------------|--------------|--------------------|
| PORT ADVENTURES DESK      | DECK 3, MID  | 9:30 AM - 1:00 PM  |
|                           |              | 2:00 PM - 5:00 PM  |
| VISTA FITNESS CENTER      | DECK 9, FWD  | 6:00 AM - 10:00 PM |
| WIDE WORLD OF SPORTS DECK | DECK 10, FWD | 24 HOURS           |

### GENERAL INFORMATION

|                           |             |                     |
|---------------------------|-------------|---------------------|
| BUENA VISTA THEATRE       | DECK 5, AFT | SHOWTIMES           |
| DISNEY VACATION CLUB DESK | DECK 4, MID | 10:30 AM - 12:30 PM |
|                           |             | 2:30 PM - 10:00 PM  |
| FUNNEL VISION             | DECK 9, MID | SHOWTIMES           |
| FUTURE CRUISE SALES DESK  | DECK 4, MID | 9:00 AM - 11:30 AM  |
|                           |             | 3:30 PM - 6:00 PM   |
|                           |             | 7:30 PM - 8:30 PM   |
| GUEST SERVICES            | DECK 3, MID | 24 HOURS            |
| MEDICAL HEALTH CENTER     | DECK 1, FWD | 9:30 AM - 11:00 AM  |
|                           |             | 4:30 PM - 7:00 PM   |
| PORT & SHOPPING DESK      | DECK 3, MID | 7:30 PM - 8:30 PM   |
| PRELUDES                  | DECK 4, FWD | 5:45 PM - 6:15 PM   |
|                           |             | 8:00 PM - 8:30 PM   |
| QUARTER MASTERS (ARCADE)  | DECK 9, MID | 24 HOURS            |
| SHUTTERS PHOTO GALLERY    | DECK 4, AFT | 10:00 AM - 11:00 PM |
| VISTA SPA AND SALON       | DECK 9, FWD | 8:00 AM - 10:00 PM  |
| WALT DISNEY THEATRE       | DECK 4, FWD | SHOWTIMES           |

### SHOPPING

|                        |             |                    |
|------------------------|-------------|--------------------|
| ART GALLERY            | DECK 4, MID | 1:00 PM - 4:00 PM  |
|                        |             | 7:00 PM - 9:00 PM  |
| HAIR BRAIDING          | DECK 9, MID | 9:00 AM - 12:00 PM |
|                        |             | 2:00 PM - 7:00 PM  |
| MICKEY'S MATES         | DECK 4, FWD | 9:00 AM - 10:30 PM |
| RADAR TRAP (DUTY FREE) | DECK 3, FWD | 4:00 PM - 10:30 PM |
| TREASURE KETCH         | DECK 4, FWD | 9:00 AM - 10:30 PM |

## IMPORTANT NUMBERS

Fire/Security: 7-3001  
Medical EMERGENCY: 7-3000  
Health Center: 7-1923

## DINNER MENU

Animator's Palate: Golden Mickeys  
Parrot Cay: Golden Mickeys  
Triton's: Golden Mickeys  
Dining Times: 5:45pm & 8:15pm

## DRINK OF THE DAY

Cool Breeze  
(Alcoholic)  
Lava Smoothies  
(Non - Alcoholic)

## WEATHER FORECAST

Sunday:  
Sunny  
High:  
63°F/17°C

Evening Attire: Formal

## DINING & LOUNGES

### BREAKFAST

|                       |             |                    |
|-----------------------|-------------|--------------------|
| BEACH BLANKET BUFFET  | DECK 9, AFT | 7:30 AM - 10:45 AM |
| GOOFY'S GALLEY        | DECK 9, AFT | 6:30 AM - 9:00 AM  |
| TRITON'S (À-LA CARTE) | DECK 3, MID | 8:00 AM - 9:30 AM  |

### LUNCH

|                      |             |                    |
|----------------------|-------------|--------------------|
| BEACH BLANKET BUFFET | DECK 9, AFT | 12:00 PM - 2:00 PM |
| GOOFY'S GALLEY       | DECK 9, AFT | 10:30 AM - 7:00 PM |
| PARROT CAY           | DECK 3, AFT | 12:15 PM - 1:30 PM |
| PINOCCHIO'S PIZZERIA | DECK 9, MID | 10:30 AM - 6:00 PM |
| PLUTO'S DOG HOUSE    | DECK 9, AFT | 10:30 AM - 6:00 PM |
| TRITON'S             | DECK 3, MID | 12:00 PM - 1:30 PM |

### DINNER

|                            |              |                   |
|----------------------------|--------------|-------------------|
| ANIMATOR'S PALATE          | DECK 4, AFT  | 5:45 PM & 8:15 PM |
| PARROT CAY                 | DECK 3, AFT  | 5:45 PM & 8:15 PM |
| TRITON'S                   | DECK 3, MID  | 5:45 PM & 8:15 PM |
| PALO (18+)                 | DECK 10, AFT | 6:00 PM - 9:00 PM |
| BEACH BLANKET (À-LA CARTE) | DECK 9, AFT  | 6:30 PM - 8:30 PM |
| PLUTO'S DOG HOUSE          | DECK 9, AFT  | 6:00 PM - 9:30 PM |

### LATE NIGHT SNACKS

|                             |             |                      |
|-----------------------------|-------------|----------------------|
| DIVERSIONS                  | DECK 3, FWD | 11:00 PM - 12:00 MID |
| ICE CREAM AT GOOFY'S GALLEY | DECK 9, AFT | 7:00 PM - 12:00 MID  |
| PINOCCHIO'S PIZZERIA        | DECK 9, MID | 9:30 PM - 12:00 MID  |
| PROMENADE LOUNGE            | DECK 3, AFT | 11:00 PM - 12:00 MID |

### ADDED FEATURES

|                  |                        |          |
|------------------|------------------------|----------|
| BEVERAGE STATION | DECK 9, AFT, PORT SIDE | 24 HOURS |
| ROOM SERVICE     | DIAL 6801 OR 6802      | 24 HOURS |

### ENTERTAINMENT - LOUNGES - BARS

Adults must be 21 and older to consume alcoholic beverages.

|                                |              |                      |
|--------------------------------|--------------|----------------------|
| CADILLAC LOUNGE (18+)          | DECK 3, FWD  | 5:30 PM - 12:00 MID  |
| COVE CAFE (18+)                | DECK 9, MID  | 6:30 AM - 12:00 MID  |
| DIVERSIONS (18+ AFTER 9:00 PM) | DECK 3, FWD  | 11:00 AM - 3:00 PM   |
|                                |              | 6:00 PM - 12:00 MID  |
| INTERNET CAFE                  | DECK 3, AFT  | 24 HOURS             |
| OUTLOOK CAFE (18+)             | DECK 10, MID | 10:00 AM - 12:00 MID |
| PINOCCHIO'S PIZZERIA           | DECK 9, MID  | 9:30 AM - 12:00 MID  |
| PLUTO'S DOG HOUSE              | DECK 9, AFT  | 10:30 AM - 6:00 PM   |
| PRELUDES                       | DECK 4, FWD  | 5:45 PM - 6:15 PM    |
|                                |              | 8:00 PM - 8:30 PM    |
| PROMENADE LOUNGE (FAMILY)      | DECK 3, AFT  | 8:00 AM - 12:00 MID  |
| SIGNALS (18+)                  | DECK 9, FWD  | 9:30 AM - 10:30 PM   |
| STUDIO SEA                     | DECK 4, MID  | SHOWTIMES            |
| WAVEBANDS (18+)                | DECK 3, FWD  | 9:45 PM - 2:00 AM    |

Consumers who order raw or partially cooked, ready-to-eat food of animal origin, are hereby informed that the food is not sufficiently cooked to ensure its safety.



## TIME ZONE CHANGE

Remember to turn your clocks  
**FORWARD 1 HOUR** upon retiring on  
SUNDAY evening, or first  
thing MONDAY morning.