

# PERSONAL NAVIGATOR

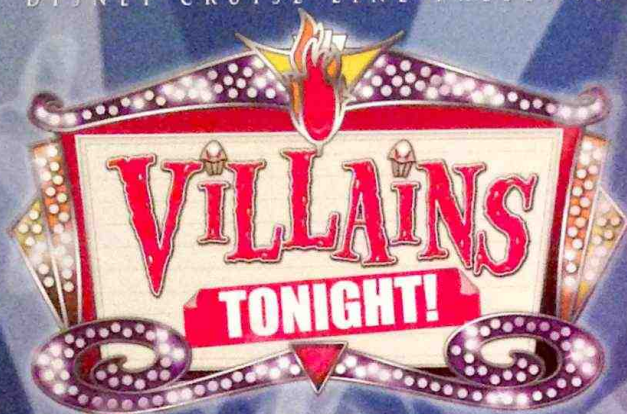
FRIDAY, DECEMBER 6, 2013

Sunrise: 6:54 a.m. Sunset: 5:35 p.m.  
Evening Attire: Optional Dress Up

Friday: Sunny High: 77°F/25°C  
Saturday: Partly Sunny High: 77°F/25°C

DAY AT SEA

DISNEY CRUISE LINE PRESENTS



WALT DISNEY THEATRE

Deck 4, Forward,

6:15 p.m. & 8:30 p.m.

As a courtesy to all Guests, we kindly advise that the saving of seats is **not** permitted in the Walt Disney Theatre.



Assistance available at the entrance to the Walt Disney Theatre 30 minutes prior to show time.

## Disney MAGIC Fun Facts

Tonnage: 84,000

Length Overall: 984 Feet

Ship's Registry: The Bahamas

### Important Dates

Keel Laid: October 31, 1996

Launch Date: April 12, 1997

Inaugural Cruise: July 30, 1998

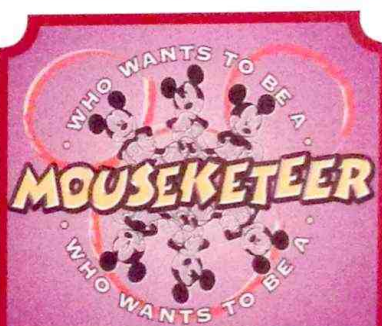
\* The Magic was built by a process called Jumboisation (in 2 separate sections) in Italy at the Fincantieri Maghera Shipyard (stern) and the Fincantieri Ancona Shipyard (bow). The joint of the ship is just in front of Lumiere's.

\* The anchor of the Disney Magic weighs 28,200 lbs (12,802.8kg) - the same weight as three elephants.

\* Over 50 nationalities make up the 960 Crew Members on board.

\* Sorcerer Mickey stands proudly 10 ft tall on the bow of the ship. There are other characters in the artwork around him.

\* Goofy hangs 20 ft tall, painting the finishing touches on the stern.



### GAME SHOW

Your chance to get into the world famous hot seat and win an exclusive prize in our version of the well known television game show.

D Lounge,  
Deck 4, Midship,  
7:30 p.m. & 9:30 p.m.

## Don't Miss:

Jack-Jack's Incredible Diaper Dash

Lobby Atrium, Deck 3, Midship - 11:30 a.m.

Calling all baby Cruisers! It's time to take to the mat to see who's the fastest crawler of the seven seas! Register your baby 15 minutes prior to the big race.

Mickey 200

Fathoms, Deck 3, Forward - 12:30 p.m.

Don't eat your vegetables... race them in this wild and wacky charge to the finish line. May the best veggie win! (Limited Availability)

Deck the Deck Tropical Holiday Party

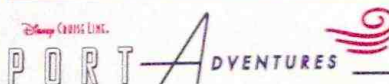
Deck Stage, Deck 9, Midship - 4:30 p.m.

Join some of your favorite Disney friends for our annual, fun-filled seasonal party, Deck the Deck!

Disco Legends (18+)

Fathoms, Deck 3, Forward - 10:45 p.m.

Put on your platform shoes and hit the dance floor as we catch a disco fever. Our '70s dance party will have you spinning like a disco ball.



Tomorrow we head to Key West with its beautiful beaches, pristine natural settings the most fetching of old American architecture. Be sure to visit the Port Adventures Desk, Deck 3, Midship for any questions.

## DINNER MENU

Animator's Palate: Show Dinner  
Carioca's: South American Dinner  
Lumiere's: French Dinner

## DRINK OF THE DAY

High Tide (Alcoholic)  
Lava Smoothie (Non Alcoholic)

### IMPORTANT NUMBERS

Fire/Security: 7-3001  
Medical Emergency: 7-3000  
Health Center: 7-1923



# FUN FOR ALL AGES HIGHLIGHTS



## JACK-JACK'S INCREDIBLE DIAPER DASH

*Lobby Atrium, Deck 3, Midship - 11:30 a.m.*

Calling all baby Cruisers! It's time to take to the mat to see who's the fastest crawler of the seven seas! Register your baby 15 minutes prior to the big race.

## MICKEY 200

*Fathoms, Deck 3, Forward - 12:30 p.m.*

Don't eat your vegetables... race them in this wild and wacky charge to the finish line. May the best veggie win! (Limited Availability)

## PORT & SHOPPING TALK

*Buena Vista Theatre, Deck 5, Aft - 1:15 p.m.*

Join your Port and Shopping Guide to learn about the incredible shopping ashore this cruise!

## SO YOU THINK YOU KNOW YOUR FAMILY?

*D Lounge, Deck 4, Midship - 2:45 p.m.*

This fun-filled family game show is always full of surprises. Find out how well you know, or don't know your family!

## DECK THE DECK TROPICAL HOLIDAY PARTY

*Deck Stage, Deck 9, Midship - 4:30 p.m.*

Join some of your favorite Disney friends for our annual, fun-filled seasonal party, Deck the Deck!

## PLAYHOUSE D LOUNGE

*D Lounge, Deck 4, Midship - 5:00 p.m.*

Calling our youngest of cruisers! Here is a special playtime that is just for you. Come meet new friends; and join in on the fun as your Cruise Staff team takes you through interactive activities made just for you!

## OFFICER PIN TRADING

*Preludes, Deck 4, Forward - 7:15 p.m.*

Come trade pins with the officers of the Disney Magic.

## DISNEY DISCO

*Promenade Lounge, Deck 3, Aft - 11:30 p.m.*

Join your Cruise Staff as they play some of your favorite Disco tunes.

# ADULT ACTIVITY HIGHLIGHTS



## SENSES SPA FITNESS CLASSES & SEMINARS

*Sunrise Stretch* - Senses Spa Fitness Center - 7:30 a.m.  
*Body Sculpt Boot Camp* - Senses Spa Fitness Center - 8:00 a.m.  
*Salon Makeover* - Senses Spa & Salon - 10:00 a.m.  
*Introduction to Acupuncture* - Keys - 11:15 a.m.  
*Detox for Health & Weight Loss* - Senses Spa & Salon - 1:00 p.m.  
*How to Increase Your Metabolism* - Senses Spa & Salon - 2:15 p.m.  
*Group Cycling* - Senses Spa Fitness Center - 4:00 p.m.

## TASTING CLASSES

*Wine Tasting* (21+) - Keys - 12:30 p.m.

*Martini Tasting* (21+) - Keys - 2:30 p.m.

*Whiskey Tasting* (21+) - Cove Cafe - 10:30 p.m.

Please make reservations for tastings at Guest Services for a nominal fee. Tasting Seminars are only for Guests 21 and Older.



## CLUB 18+21 - LUNCH

*Lumiere's, Deck 3, Midship - 12:15 p.m.*

## CLUB 18+21 - XBOX CHALLENGE

*O'Gills Pub, Deck 3, Forward - 5:00 p.m.*

## CLUB 18+21 - MIXER

*O'Gills Pub, Deck 3, Forward - 10:00 p.m.*



## ESPN DREAM TEAM DRAFT DAY - BASEBALL

*O'Gills Pub, Deck 3, Forward - 3:00 p.m.*

Play ball! Join the "Commissioner" and engage in this interactive fantasy baseball draft unlike anything you've ever seen! Can YOU draft the greatest baseball team of All-Time?



## DISCO LEGENDS

*Fathoms, Deck 3, Forward - 10:45 p.m.*

Put on your platform shoes and hit the dance floor as we catch a disco fever. Our '70s dance party will have you spinning like a disco ball.



# DIAMOND JACKPOT BINGO

**Promenade Lounge, Deck 3, Aft**  
**Card Sales - 10:30 a.m.**

**Game Starts - 10:45 a.m.**

Join us for 4 cash prize games and your chance to win a Diamond Pendant! Everyone attending will also receive a voucher to collect a free Diamonds International charm bracelet!

# \$5,000 MEGA JACKPOT BINGO

**Fathoms, Deck 3, Forward**

**Card Sales - 3:30 p.m.**

**Game Starts - 3:45 p.m.**

Don't miss your chance to take home big money! 4 CASH prize games and great raffle prizes to be won! Complete the fourth game in 46 numbers or less and win the \$5,000 Mega Jackpot!



# YOUTH ACTIVITIES HIGHLIGHTS

## DINE & PLAY

A convenience for families dining at 8:15 p.m., our Youth Activities Counselors will be available at 9:15 p.m. at the entrance of Lumière's, Carioca's and Animator's Palate dining rooms to bring registered children to join the fun in the Oceaneer Club and Oceaneer Lab.



Deck 5, Aft (7-5864)

8:00 a.m. - 11:00 p.m.

Infants and Toddlers can enjoy toys and activities at It's a Small World Nursery. Reservations are first come, first served so please stop by!



Deck 5, Midship (7-1440)

(3-12 years old)

9:00 a.m. - 12:00 mid

## ALOHA LUAU

4:45 p.m.

It's party time, Hawaiian style! Come join us for a Luau experience and learn how to dance like Lilo & Stitch.

## MARVEL AVENGERS ACADEMY

7:15 p.m.

Kids assemble! Join Nick Fury and S.H.I.E.L.D Agents at Disney's Oceaneer Club and train to be the next generation of super heroes.



Deck 5, Midship (7-1445)

(3-12 years old)

9:00 a.m. - 12:00 mid

## HATS OFF TO PETER PAN

12:15 p.m.

You'll believe you can fly. All it takes is faith, trust, and pixie dust and a special visit from Peter Pan! Rediscover the magic of Neverland!

## SUPER SLOPPY SCIENCE

4:00 p.m.

Join Professor Make-O-Mess in some of the most extreme experiments you will ever see in the world of Super Sloppy Science!



Deck 2, Midship (7-5816)

(11-14 years old)

10:00 a.m. - 1:00 a.m.

## GENDER WARS

12:00 p.m.

It's the battle of girls vs. boys... Who will dominate to win the ultimate battle?

## SHIP FACTOR

4:00 p.m.

Ready for one of the toughest challenge competitions onboard?



Deck 11, Midship (7-18517)

(14-17 years old)

10:00 a.m. - 2:00 a.m.

## ZOMBIFIED

1:00 p.m.

A big movie producer is looking for zombies to help him film the finale to his latest masterpiece, Zombified.

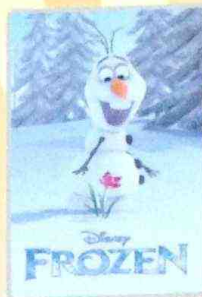
## PUMP IT UP

9:00 p.m.

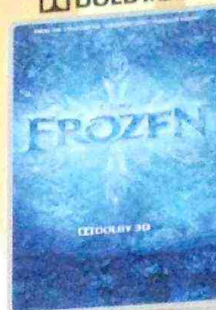
Join us in the Fitness Center for a Teen Only workout. Meet in Vibe to join in!

# BUENA VISTA THEATRE

## Today's Movies



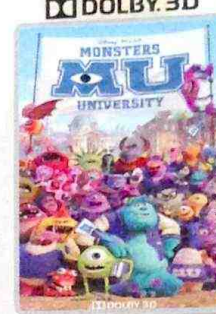
8:30 a.m. & 10:30 p.m.  
Duration: 1 hr 48 mins  
Rating: PG



10:45 a.m.  
Duration: 1 hr 48 mins  
Rating: PG



2:30 p.m.  
Duration: 1 hr 51 mins  
Rating: PG-13



5:45 p.m. & 8:15 p.m.  
Duration: 1 hr 43 mins  
Rating: G



## VARIETY SHOW

Featuring the Physical Comedy of Max Winfrey, as he entertains you in this cabaret style show.

*Fathoms,*

*Deck 3, Forward,*

7:30 p.m. (Families)

10:15 p.m. (Adults)



## DANCE PARTY

Come join us as we count down to a brand new year while taking you on a journey of great musical genre in history!

*D Lounge,*

*Deck 4, Midship,*

10:15 p.m.

## YOUTH ACTIVITIES OPEN HOUSE

Open House is an opportunity for all to come and participate in a variety of exciting activities and free time in the Oceaneer Club, Oceaneer Lab, Edge, Vibe, and It's a Small World Nursery throughout the cruise. During these times secured programming will still be offered in the other venues for those looking to check their children into care.

Vibe: 10:00 a.m. - 11:00 a.m.

Edge: 10:00 a.m. - 11:00 a.m.

Disney's Oceaneer Lab: 10:00 p.m. - 12:00 mid

Disney's Oceaneer Club: 9:00 a.m. - 10:30 a.m.



# MORE TO ENJOY WHILE ONBOARD



## PLAN YOUR NEXT GETAWAY NOW

Our 3- and 4-night Bahamian Cruises are a perfect way to get an instant tropical recharge! Departing from Miami or Port Canaveral, most Bahamian cruises include a stop at Disney's private island, Castaway Cay. Visit the Future Cruise Sales Desk today and ask about our special onboard booking offer.



## DISNEY VACATION CLUB

Visit the Disney Vacation Club information desk and ask us about show times where you will learn how to turn every vacation into the vacation of a lifetime.



## PORT & SHOPPING INFORMATION

**Port and Shopping Show** at 1:15 p.m. in the Buena Vista Theatre, Deck 5 Aft. Everything will be covered from Diamonds to T-Shirts, Watches to Tanzanite. A free Charm Bracelet and chance to win a Diamond Pendant for all in attendance! The first 150 Guests will receive a Ship Charm and a Savings Ashore Coupon Book.

**Diamond, Gemstone and Watch Seminar** in Promenade Lounge, Deck 3 Aft at 3:30 p.m. Learn what makes a Diamond sparkle, the rarity of Ammolite and why Alexandrite changes color! She will give you insider tips on shopping for gemstones in Key West. Free Tanzanite Stud Earrings and a Raffle to win a Tanzanite Pendant!

## ONBOARD AIRLINE CHECK IN

This will be your final chance to enroll for Onboard Airline Check In. Stop by the Guest Services Desk, Deck 3, Midship by 12:00 p.m. today.

## SURF AT SEA

\$0.75 per minute or save money by buying blocks of time. \$27.50 for 50 minutes, \$40.00 for 100 minutes and \$75.00 for 250 minutes. Wireless information sheets are available at Guest Services, Deck 3, Midship and the Internet Cafe, Deck 3, Aft. Due to the technology involved and satellite connectivity, the onboard internet service will be noticeably slower than you may be accustomed to and might at times be interrupted or unavailable.

## QUARTER MASTERS ARCADE

Where can you fly a fighter jet, save a Princess, race NASCAR's greatest and beat bad guys all before dinner? Quarter Masters is on Deck 9, Midship, where the champions play.

Disney Cruise Line

## PORT ADVENTURES

Tomorrow we head to Key West with its beautiful beaches, pristine natural settings and an Old Town boasting some of the most fetching of old American architecture. Experience Key West like locals do on the Key Lime Bike tour or surround yourself in the serenity of butterflies during the Key West Butterfly & Nature Conservatory Aquarium.

Stop by the Port Adventures Desk located on Deck 3 Midship with any questions.

## SHOPPING

### H2O BATH COLLECTION

Treat yourself to the ultimate indulgence with H2O bath products. H2O offers shampoo, conditioner, lip balm, hydrating body lotion and after sun care. Available in Whitecaps, Deck 4, Midship.

### COMMEMORATIVE DISNEY MAGIC SOUVENIRS

Visit Mickey's Mainsail and Whitecaps for your final chance to commemorate your voyage on the reimagined Disney Magic with Disney Cruise Line® merchandise featuring the new Disney Magic logo. Deck 4, Forward.

### SOPHIA FIORI GUESS THE CARAT WEIGHT

Whoever guesses closest wins a 5 carat Midnight Sapphire or a pair of Midnight Sapphire Stud Earrings! 5:00 pm - 11:30 pm, Winners Announced tonight at 7:30 pm. Must be present to win. Whitecaps, Deck 4, Forward.

### CAPTAIN'S SIGNING

Don't miss your chance to meet the Master of the Disney Magic! Stop by Whitecaps today at 12:15pm where you can have your cruise mementos signed by our Captain. Deck 4, Forward.

### SILENT ART AUCTION

Original inkings, line art, lithographs or will it be prints? Make sure you stop by the art gallery to see which pieces are up for silent auction today! The silent auction will take place from 11:00 a.m. to 2:00 p.m. Art Gallery, Deck 4, Midship.

### OFFICER PIN TRADING

Come and trade pins with the officers of the Disney Magic at 7:15 p.m. in Preludes, Deck 4, Forward.



## PAMPER PACKAGE

Full Body Massage ~ Mini Booster Facial  
Indian Scalp Massage ~ Foot reflex  
75 Minutes for \$149

Deck 9, Forward - Phone : 7-1465

## SOFIA FIORI

Industry leaders in vivid colored diamonds, and more specifically Caribbean blue diamonds - one of the single most popular purchases at sea because it reminds everyone of the colors of the breathtaking ocean!

Whitecaps, Deck 4, Forward

Sophia Fiori



## GET THE PICTURE!

Get all your stateroom photos on a disc for one great price!  
Update and get all your printed photos too!

*\*Please note that photos are available for viewing on our interactive photo kiosks approximately five hours after being taken and are only available for purchase during this cruise.*

## IMPORTANT INFORMATION

### Security Notice

All Guests (including Children) who wish to disembark or embark the ship are required to present their Key to the World card at the gangway. A photo ID is also required for those Guests who are 18 years of age or older. Guests under the age of 18 are required to have a parent, guardian or other responsible adult sign an authorization form at the Guest Service Desk if they wish to go ashore unaccompanied or with any adult from another stateroom.

### Cold and Flu Reminder

Please wash hands frequently and thoroughly, particularly before meals. Contact the Health Center by dialing 7-1923, should anyone in your party become ill.

### Inclement Weather

For the safety of all Guests, outdoor events may be changed due to unforeseen weather conditions.

### Corridor Quiet Hours

As a courtesy to all our Guests, please recognize quiet hallway hours from 10:00 p.m. till 6:00 a.m.

### Environmental Message

With Disney's commitment to the Environment please refrain from throwing anything over the Ship's side. Thank you.

### No Reserved Seats Policy

As a courtesy to all Guests we kindly advise that the saving of seats is not permitted in the Walt Disney Theatre, and the saving of the sun loungers is not permitted on Deck 9 and 10. Items left unattended will be returned to lost and found at Guest Services, Deck 3, Midship.

### Smoking

For the comfort of our guests, the following areas are designated as smoking areas:  
• Deck 10 forward, Starboard side  
• Deck 9, forward, Starboard side at Quiet Cove  
• Deck 4, aft, port side from 6:00 p.m. to 6:00 a.m. only (all of Deck 4 is non-smoking from 6:00 a.m. to 6:00 p.m.)  
Smoking is prohibited inside all guest staterooms and on stateroom verandahs. Guests found smoking in their staterooms or on their verandahs will be charged a \$250 stateroom recovery fee.

### Sunscreen Advisory

Don't forget to apply sunscreen and insect repellent when going ashore.

### Walt Disney Theatre

Theatrical performances may use artificial fog, strobe lights, pyrotechnics and other special effects. For the safety of our performers and the comfort of those around you, the use of any photography or video recording device or any electronic equipment is prohibited.

### Verandah Safety

Please do not leave any combustible materials on your balcony when not present in your stateroom for safety reasons.



Morning	8:30	8:45	9:00	9:15	9:30	9:45	10:00	10:15	10:30	10:45	11:00	11:15	11:30	11:45	12:00	12:15	12:30	12:45	1:00	1:15	1:30																								
FUNNEL VISION	A Bug's Life (G) Funnel Vision							Brave (PG) Funnel Vision							Movie Challenge Poolside Funnel Vision							Movie - As Chosen By You Funnel Vision																							
BUENA VISTA THEATRE	Frozen (PG) Duration: 1 Hour 48 Minutes							Frozen  (PG) Duration: 1 Hour 48 Minutes														Port & Shopping Talk Buena Vista Theatre																							
CHARACTER	Princess Gathering Lobby Atrium							Jake Dk 4, Mid							Cpt. Hook Dk 4, Mid							Donald Gazebo, Dk 9							Captain America Preludes Lobby Atrium																
	Santa Claus Preludes							Santa Claus Preludes							Jake Dk 4, Mid							Mickey Gazebo, Dk 9							Daisy Gazebo, Dk 9																
FUN FOR ALL AGES	Disney Trivia Promenade Lounge							Animation - Goofy Animator's Palate							Bingo Pre Sales							Diamond Jackpot  Promenade Lounge							Captain's Signing Whitecaps							The Generation Game D Lounge									
								Game Show: The Wheel Promenade Lounge							Holiday Crafts Animator's Palate							Cruisin' for Trivia O'Gills Pub							Disney Vacation Club Group Preview D Lounge							 Fathoms (Limited Availability)							Port & Shopping Talk Buena Vista Theatre		
ADULTS	Friends of Bill W. Animator's Palate							Crafts - Tile Coasters O'Gills Pub							70's Music Trivia O'Gills Pub							Club 18*21 - Lunch Lumiere's							Singles' Lunch Lumiere's							80's Music Trivia O'Gills Pub									
VIBE 14-17 YEARS OLD								 Youth Activities Open House							GOTCHA							Crowning the Couch Potato							Zombified																
EDGE 11-14 YEARS OLD								 Youth Activities Open House							Sports Deck Fun							Gender Wars							Holiday Animation Cells																
OCEANEER LAB 3-12 YEARS OLD								 Goofy Files							 Flubber							 Hats Off to Peter Pan							Lunch																
OCEANEER CLUB 3-12 YEARS OLD	 Youth Activities Open House														 Heffalump Hunting							 Mouseketeer Training							Lunch																
	 Puzzle Playtime																																												

Afternoon	1:45	2:00	2:15	2:30	2:45	3:00	3:15	3:30	3:45	4:00	4:15	4:30	4:45	5:00	5:15	5:30	5:45	6:00	6:15	6:30	6:45			
FUNNEL VISION	Movie - As Chosen By You Funnel Vision				Tangled (PG) Funnel Vision				Deck The Deck Funnel Vision				Cars (G) Funnel Vision											
BUENA VISTA THEATRE					Thor: The Dark World  (PG-13) Duration: 1 Hour 51 Minutes												Monsters University  (G) Duration: 1 Hour 43 Minutes							
CHARACTER					Goofy Gazebo, Dk 9		Captain America Preludes		Deck The Deck Deck Stage				Mickey Dk 5, Mid						Minnie Dk 5, Mid					
							Pluto Gazebo, Dk 9																	
FUN FOR ALL AGES	Disney Tunes Trivia Promenade Lounge				So You Think You Know Your Family? D Lounge		Bingo Pre Sales		\$5,000 Mega Jackpot 				Playhouse D Lounge D Lounge								Walt Disney Theatre			
	Magic Quest Fathoms				Crafts: 3D Crafts Promenade Lounge		Diamond, Gemstone & Watch Seminar Promenade Lounge						Live Music with Carlos & Maria Lobby Atrium		Jewish Sabbath Fathoms									
ADULTS	Disney Animation Animator's Palate				ESPN Dream Team Draft Day - Baseball O'Gills Pub				Art of The Theme Show Tour Pre-Book at Guest Services		Club 18*21 - Xbox Challenge O'Gills Pub													
			How to Increase Your Metabolism Senses Spa & Salon		LIVE Music with David Kenny Quiet Cove Pool						Singles' Mingle Cove Cafe													
VIBE 14-17 YEARS OLD	Zombified				Scavenger Hunt				Gingerbread Man Decorating				ESPN Dream Team Draft Day - Baseball				Holiday Animation Cells							
EDGE 11-14 YEARS OLD	Picture This				Scavenger Hunt				Ship Factor								Youth Activities Open House							
OCEANEER LAB 3-12 YEARS OLD					Anyone Can Cook						Super Sloppy Science						Animation Antics		Dinner					
OCEANEER CLUB 3-12 YEARS OLD	Youth Activities Open House														Aloha Luau				Dinner					
			Become Iron Man!				Once Upon a Time																	

Evening	7:00	7:15	7:30	7:45	8:00	8:15	8:30	8:45	9:00	9:15	9:30	9:45	10:00	10:15	10:30	10:45	11:00	11:15	11:30	11:45	12:00	
FUNNEL VISION	Cars (G) Funnel Vision					The Muppets (PG) Funnel Vision							Remember the Titans (PG) Funnel Vision									
BUENA VISTA THEATRE	Monsters University 3D Duration: 1 Hour 43 Minutes					Monsters University  (G) Duration: 1 Hour 43 Minutes							Frozen (PG) Duration: 1 Hour 48 Minutes									
CHARACTER	Goofy Dk 5, Mid					Mickey Dk 5, Mid							Tiana Dk 5, Mid		Mickey Dk 5, Mid		Goofy Dk 5, Mid					
						Donald Lobby Atrium (P)							Minnie Lobby Atrium (P)		Cinderella Lobby Atrium (P)							
FUN FOR ALL AGES	Officer Pin Trading Preludes		D Lounge Variety: Max Winfrey Fathoms			Walt Disney Theatre			D Lounge Live Music with Dreem Promenade Lounge			D Lounge Live Music with Dreem Promenade Lounge		D Lounge Disney Disco Promenade Lounge								
ADULTS	Live Piano with Nick Messina Keys					Live Music with Carlos & Maria Fathoms							Variety: Max Winfrey Fathoms		Fathoms 70's Remix with Guest DJ A.K. Vyb Fathoms		Live Piano with Nick Messina Keys					
VIBE 14-17 YEARS OLD	Youth Activities Open House					Sports Deck Fun			Pump It Up			Bring It!					Gender Wars		Holiday Formal			
EDGE 11-14 YEARS OLD	That's Hilarious								Sports Deck Fun			Disney Cruise Line Trivia					Holiday Party					
OCEANEER LAB 3-12 YEARS OLD	Around the World in 7 days					Who Wants To Be A Mouseketeer			Holiday Animation Cells			Youth Activities Open House										
OCEANEER CLUB 3-12 YEARS OLD	Marvel Avengers Academy					Memory Wall			Aladdin's Fun Adventures			Camp Out										

Symbol for activities that will be repeated during the cruise



Fold along the dotted lines and take me with you so you don't miss any of the fun!



IN THE FUNNEL VISION SERIES  
IN THE FUNNEL VISION SERIES  
IN THE FUNNEL VISION SERIES  
IN THE FUNNEL VISION SERIES



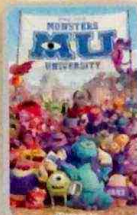
IN THE FUNNEL VISION SERIES  
IN THE FUNNEL VISION SERIES  
IN THE FUNNEL VISION SERIES  
IN THE FUNNEL VISION SERIES



FRIDAY, DECEMBER 6, 2013 - DAY AT SEA

# BUENA VISTA THEATRE

DOLBY 3D DOLBY 3D DOLBY 3D



8:30 a.m. & 10:30 p.m.  
Duration:  
1 hr 48 mins  
Rating: PG

10:45 a.m.  
Duration:  
1 hr 48 mins  
Rating: PG

2:30 p.m.  
Duration:  
1 hr 51 mins  
Rating: PG-13

5:45 p.m. & 8:15 p.m.  
Duration:  
1 hr 43 mins  
Rating: G

## Character Appearances

**PRINCESS GATHERING**  
Lobby Atrium  
9:00 a.m. & 1:15 p.m.

**SANTA CLAUS**  
Preludes  
9:30 a.m. & 11:00 a.m.

**JAKE - THE NEVERLAND PIRATE**  
Deck 4, Midship - 10:30 a.m. & 11:30 a.m.

**CAPTAIN HOOK**  
Deck 4, Midship - 11:00 a.m.

**DONALD DUCK**  
Gazebo, Dk 9 - 12:30 p.m.  
Lobby Atrium (P) - 9:30 p.m.

**MICKEY MOUSE**  
Gazebo, Dk 9 - 1:00 p.m.  
Deck 5, Midship - 5:30 p.m.,  
7:45 p.m. & 10:00 p.m.

**DAISY DUCK**  
Gazebo, Dk 9 - 1:30 p.m.

**CAPTAIN AMERICA**  
Preludes  
1:00 p.m. & 3:30 p.m.

**GOOFY**  
Gazebo, Dk 9 - 3:00 p.m.  
Deck 5, Midship  
7:15 p.m. & 10:45 p.m.

**PLUTO**  
Gazebo, Dk 9 - 3:30 p.m.

**DECK THE DECK**  
Deck Stage - 4:30 p.m.

**MINNIE MOUSE**  
Deck 5, Midship - 6:00 p.m.  
Lobby Atrium (P) - 10:15 p.m.

**PRINCESS TIANA**  
Deck 5, Midship - 9:30 p.m.

**CINDERELLA**  
Lobby Atrium (P) - 10:45 p.m.

Don't forget your Camera to capture those Magical Moments!

Check here each day for Character appearances.  
For detailed Character appearance information  
see the Character Information Board in the Lobby Atrium.  
Meet-and-Greets will be advertised for the length of time the line will be  
open. To avoid disappointment, please meet at start time of appearances.

## YOUTH ACTIVITIES THEMED EXPERIENCES

**CLUBHOUSE SERIES**  
focuses on movement and  
features content which appeals  
to younger children.

**STORYBOOK SERIES**  
is designed with a strong  
connection to the Disney  
classic stories.

**JUMP UP! SERIES**  
includes large group games &  
movement-oriented activities.

**CREATE & INVENT SERIES**  
will have a tactile focus allowing  
children to create and admire  
their work.

**IN THE SPOTLIGHT SERIES**  
focuses on children's stage  
presence with lots of  
activities and enthusiasm.

**SOLVE IT! SERIES**  
are less active, but will challenge  
children with problem/  
solutions-based activities.

### YOUTH ACTIVITIES OPEN HOUSE

Activities for families, adults and children of all ages to enjoy together.

## SHIP DIRECTORY

### YOUTH ACTIVITIES

DISNEY'S OCEANEER CLUB	DECK 5, MID	9:00 AM - 12:00 MID
DISNEY'S OCEANEER LAB	DECK 5, MID	9:00 AM - 12:00 MID
EDGE	DECK 2, MID	10:00 AM - 1:00 AM
IT'S A SMALL WORLD NURSERY	DECK 5, AFT	8:00 AM - 11:00 PM
VIBE	DECK 11, MID	10:00 AM - 2:00 AM

### POOLS

\*Children under 12 years of age must have adult supervision in all pools.

AQUADUNK	DECK 10, MID	10:00 AM - 9:00 PM
AQUALAB	DECK 9, AFT	10:00 AM - 9:00 PM
GOOFY'S POOL	DECK 9, MID	9:00 AM - 6:00 PM 8:00 PM - 10:00 PM
NEPHEW'S SPLASH ZONE	DECK 9, AFT	9:00 AM - 6:00 PM
QUIET COVE POOL	DECK 9, FWD	6:00 AM - 12:00 MID
TWIST 'N' SPOUT	DECK 9, AFT	10:00 AM - 9:00 PM

### RECREATION

PORT ADVENTURES DESK	DECK 3, MID	10:00 AM - 12:00 PM 2:00 PM - 5:00 PM 7:00 PM - 8:30 PM
SENSES FITNESS CENTER	DECK 9, FWD	6:30 AM - 10:00 PM
WIDE WORLD OF SPORTS DECK	DECK 10, FWD	24 HOURS

### GENERAL INFORMATION

BUENA VISTA THEATRE	DECK 5, AFT	SHOWTIMES
DISNEY VACATION CLUB DESK	DECK 4, MID	9:00 AM - 11:00 AM 2:30 PM - 10:00 PM
FUTURE CRUISE SALES DESK	DECK 4, MID	9:30 AM - 12:00 PM 2:30 PM - 6:00 PM 7:30 PM - 8:30 PM 9:30 PM - 10:30 PM
FUNNEL VISION	DECK 9, MID	SHOWTIMES
GUEST SERVICES	DECK 3, MID	24 HOURS
MEDICAL HEALTH CENTER	DECK 1, FWD	9:30 AM - 11:00 AM 4:30 PM - 7:00 PM
PORT & SHOPPING DESK	DECK 3, MID	7:30 PM - 8:30 PM
PRELUDES	DECK 4, FWD	5:30 PM - 8:30 PM
QUARTER MASTERS (ARCADE)	DECK 9, MID	24 HOURS
SENSES SPA AND SALON	DECK 9, FWD	8:00 AM - 10:00 PM
SHUTTERS PHOTO GALLERY	DECK 4, AFT	10:00 AM - 12:00 PM 5:00 PM - 11:00 PM
WALT DISNEY THEATRE	DECK 4, FWD	SHOWTIMES

### SHOPPING

MICKEY'S MAINSAIL	DECK 4, FWD	9:30 AM - 11:00 PM
QUACKS	DECK 9, MID	10:00 AM - 4:00 PM
SEA TREASURES	DECK 3, FWD	11:00 AM - 11:00 PM
VISTA GALLERY	DECK 4, MID	11:00 AM - 2:00 PM 4:00 PM - 10:00 PM
WHITECAPS	DECK 4, FWD	9:30 AM - 11:00 PM

## IMPORTANT NUMBERS

Fire/Security: 7-3001  
Medical EMERGENCY: 7-3000  
Health Center: 7-1923

**DINNER MENU**  
 Animator's Palate: Show Dinner  
 Carioca's: South American Dinner  
 Lumière's: French Dinner  
 Dining Times: 5:45pm & 8:15pm

**DRINK OF THE DAY**  
 High Tide (Alcoholic)  
 Lava Smoothie (Non - Alcoholic)

**WEATHER FORECAST**  
 Friday: Sunny  
 High: 77°F/25°C  
 Saturday:  
 Partly Sunny  
 High: 77°F/25°C

## DINING & LOUNGES

### BREAKFAST

CABANAS	DECK 9, AFT	7:30 AM - 11:30 AM
DAISY'S DE-LITES	DECK 9, AFT	7:00 AM - 9:30 AM
LUMIÈRE'S (À-LA CARTE)	DECK 3, MID	8:00 AM - 9:30 AM

### LUNCH

CABANAS	DECK 9, AFT	11:30 AM - 3:00 PM
DAISY'S DE-LITES	DECK 9, AFT	11:00 AM - 6:00 PM
LUMIÈRE'S	DECK 3, MID	12:00 PM - 1:30 PM
PETE'S BOILER BITES	DECK 9, AFT	11:00 AM - 6:00 PM
PINOCCHIO'S PIZZERIA	DECK 9, MID	11:00 AM - 6:00 PM

### DINNER

ANIMATOR'S PALATE	DECK 4, AFT	5:45 PM & 8:15 PM
CABANAS TABLE SERVICE	DECK 9, AFT	6:30 PM - 8:30 PM
CARIOCA'S	DECK 3, AFT	5:45 PM & 8:15 PM
LUMIÈRE'S	DECK 3, MID	5:45 PM & 8:15 PM
PALO (FOR RESERVATIONS CALL 7-6843)	DECK 10, AFT	6:00 PM - 8:30 PM
PETE'S BOILER BITES	DECK 9, AFT	6:00 PM - 10:00 PM

### LATE NIGHT (SNACKS)

O'GILLS PUB	DECK 3, FWD	10:45 PM - 11:45 PM
PINOCCHIO'S PIZZERIA	DECK 9, MID	9:30 PM - 12:00 MID
PROMENADE LOUNGE	DECK 3, AFT	10:45 PM - 11:45 PM

### ADDED FEATURES

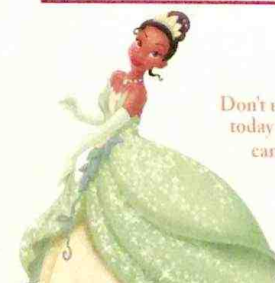
EYE SCREAM	DECK 9, AFT	11:00 AM - 11:00 PM
FROZONE TREATS	DECK 9, AFT	11:00 AM - 10:00 PM
BEVERAGE STATION	DECK 9, AFT	24 HOURS
ROOM SERVICE	DIAL 7-4330	24 HOURS

### ENTERTAINMENT - LOUNGES - BARS

Adults must be 21 and older to consume alcoholic beverages.

AFTER HOURS	DECK 3, FWD	(AFTER 9:00 PM ADULTS ONLY)
COVE CAFE (18+)	DECK 9, MID	7:00 AM - 12:00 MID
FATHOMS (18+)	DECK 3, FWD	7:00 PM - 2:00 AM
INTERNET CAFE	DECK 3, AFT	24 HOURS
KEYS (18+)	DECK 3, FWD	5:30 PM - 12:30 AM
O'GILLS PUB (18+)	DECK 3, FWD	12:00 PM - 12:30 AM
PRELUDES	DECK 4, FWD	5:30 PM - 8:30 PM
PROMENADE LOUNGE	DECK 3, AFT	9:00 AM - 12:00 MID
PINOCCHIO'S PIZZERIA	DECK 9, MID	9:30 AM - 12:00 MID
SIGNALS (18+)	DECK 9, FWD	10:00 AM - 10:00 PM
D LOUNGE	DECK 4, MID	SHOWTIMES

Public Health Advisory: Consuming raw or undercooked meats, poultry, seafood, shellfish, or eggs may increase your risk for foodborne illness, especially if you have certain medical condition.



## PRINCESS GATHERING

Don't miss your chance to see this Royal gathering  
today in the Lobby Atrium and don't forget your  
camera to capture those magical moments.  
9:00 a.m. & 1:15 p.m.