

# PERSONAL NAVIGATOR



WEDNESDAY, OCTOBER 16, 2013

Sunrise: 7:25 a.m. Sunset: 6:49 p.m.  
Evening Attire: Optional Dress Up  
All Ashore: 8:30 a.m.  
All Aboard: 5:00 p.m.  
Gangway: Deck 1, Midship/Deck 1, Aft &  
Wednesday: Sunny High: 78°F/26°C  
Thursday: Partly Cloudy High: 78°F/26°C

DISNEY'S CASTAWAY CAY

## Disney's Believe

Genie from Aladdin and many of Disney's most beloved magic makers take a father on a magical journey to show him that anything is possible if you just believe.

WALT DISNEY THEATRE  
Deck 3 & 4, Forward  
6:15 P.M. & 8:30 P.M.

As a courtesy to all Guests, we kindly advise that the saving of seats is **not** permitted in the Walt Disney Theatre.



Assistance available at the entrance to the Walt Disney Theatre 30 minutes prior to show time.



## Disney's Castaway Cay

Reserved exclusively for Guests on Disney Cruise Line Bahamian and Caribbean cruise vacations, Castaway Cay is Disney's private port-of-call paradise. On this island, enjoy tropical leisure activities, such as snorkeling, boating, swimming and sunbathing.

### Friendly Reminders

- Serenity Bay is reserved for Guests 18 and older.
- Your Key To The World Card will need to be used for all transactions on Disney's Castaway Cay except for the Post Office.
- A limited number of all-terrain wheelchairs are available across from Scuttle's Cove.
- For your convenience, beach towels are available as you leave the ship; please return them at the gangway at the end of your day.
- Due to our commitment to the environment, we ask that seashells, coral and other natural treasures be left undisturbed at Disney's Castaway Cay for all to enjoy.

### Debark Talk Broadcast

Your Cruise Director, Christiaan, presents important information, including U.S. Customs and Border Protection procedures. Tune in to Channel 5 of your stateroom TV. Please place your luggage outside your stateroom between 8:30 p.m. - 10:30 p.m.

Thank you in advance for completing your comment card.



Disney Cruise Line  
HALLOWEEN  
ON THE  
HIGH SEAS  
CRUISES

## The Pumpkin Tree

Lobby Atrium,  
Deck 3, Midship  
7:30 p.m.

## Don't Miss:

### runDisney: Castaway Cay 5K (12+)

*Evolution, Deck 4, Aft - 8:15 a.m.*

Runners (12+) meet at 8:15 a.m. We will depart the ship at 8:30 a.m., and make our way to the Bike Rentals where the run will begin.

### Captain's Signing

*Whitecaps, Deck 3, Forward - 7:15 p.m.*

Meet the Master of the Disney Dream and have your cruise memories signed.

### Sea Ya' Real Soon!

*Lobby Atrium, Deck 3, Midship - 10:15 p.m.*

Mickey and some of his Disney friends invite you to join them in the ship's Atrium. You won't want to miss this very special farewell meet and greet. Bring your cameras!

### Haunted Stories of the Sea

*Deck Stage, Deck 11, Midship - 11:00 p.m.*

The Halloween tradition of telling ghostly tales comes to the Disney Dream. Featuring frightening visuals, creepy sounds and spooky effects, our Sea Captain will share stories of the strange, the bizarre and the just plain scary that will leave even the bravest of souls with a chill.

### Visit The Future Cruise Desk Early Today

Please visit the Future Cruise Desk, Deck 4, Midship, as early as possible today. The last day of the cruise tends to get busy in the evening, and we want to be sure you have the opportunity to save 10% on your next cruise, receive up to a \$200 onboard credit, and pay a reduced deposit! Tune to Channel 8 for details.



## DINNER MENU

Animator's Palate: Pacific Rim Cuisine  
Enchanted Garden: Continental Market  
Royal Palace: French Dinner

## DRINK OF THE DAY

Bahama Mama (Alcoholic)  
Coco Bali (Non Alcoholic)

### IMPORTANT NUMBERS

Fire/Security: 7-3001  
Medical Emergency: 7-3000  
Health Center: 7-1923



# FAMILY ACTIVITY HIGHLIGHTS



## RUNDISNEY: CASTAWAY CAY 5K (12+)

*Evolution, Deck 4, Aft - 8:15 a.m.*

Runners (12+) meet at 8:15 a.m. We will depart the ship at 8:30 a.m., and make our way to the Bike Rentals where the run will begin.

## ISLAND POWER WALK

*Meet at the Post Office - 9:30 a.m.*

Join your Cruise Staff for a brisk walk around the island. Meet outside, on the pier by the Post Office. Meet time is 9:30 a.m. Walk leaves promptly at 9:45 a.m.

## CRAB RACES

*Island Gazebo 1 - 11:45 a.m.*

*Island Gazebo 2 - 12:45 p.m.*

Watch some local sea creatures make a break for the finish line.

## FAMILY WHALE DIG

*Monstro Point - 1:00 p.m.*

Our island paleontologist leads us in the excavation of a giant whale skeleton and other fossilized treasures! Make no bones about it, this is an adventure every beachcomber is sure to dig!

## DISNEY VACATION CLUB GROUP PREVIEW

*Evolution, Deck 4, Aft - 4:30 p.m.*

Want to learn more about taking magical vacations year after year? Please see a Disney Vacation Club representative on Deck 4, Midship, or call 7-2805 from your stateroom phone for more information about our interactive group presentation.

## OFFICER PIN TRADING

*Lobby Atrium, Deck 3, Midship - 7:30 p.m.*

Come trade pins with the officers of the Disney Dream.

## THE PUMPKIN TREE

*Lobby Atrium, Deck 3, Midship - 7:30 p.m.*

The Pumpkin Tree has bloomed, but one more surprise is in store for all of you. All ages are welcome to join us in the Atrium for some frightening fun as we celebrate Halloween with a spooky ceremony that will have you screaming with ghoulish delight.

# ADULT ACTIVITY HIGHLIGHTS

## SENSES SPA FITNESS CLASSES & SEMINARS

*Metabolic Assessment - Senses Fitness Center - 7:00 a.m.*

*Body Sculpt Boot Camp - Goofy's Sports Deck - 8:00 a.m.*

*Wake Up & Stretch Class - Senses Fitness Center - 9:00 a.m.*

*Burn Fat Faster - Senses Fitness Center - 10:00 a.m.*

*Good Feet: Improving Posture - Senses Fitness Center - 3:30 p.m.*

*Pathway to Pilates - Senses Fitness Center - 4:00 p.m.*

*Acupuncture: Chinese Herbs - Senses Spa & Salon - 4:30 p.m.*



## TASTING CLASSES

*Beer Tasting (21+) - 687 Pub (Pre Book, Nom. Fee) - 4:00 p.m.*

Please make reservations for tastings at Guest Services for a nominal fee. Tasting Seminars are only for Guests 21 and Older.



**CLUB 18\*21 - BASKETBALL FREE THROW**  
*In Da Shade Game Pavilion - 1:00 p.m.*

**CLUB 18\*21 - FAREWELL**  
*Currents, Deck 13, Forward - 10:15 p.m.*

## ART OF THE THEME SHOW TOUR

*Meet at Meridian, Deck 12, Aft - 2:30 p.m.*

Join us on a guided ship tour and discover the key ingredients that make the Disney Dream cruise ship one-of-a-kind.

## MAKING OF THE DREAM

*Evolution, Deck 4, Aft - 3:00 p.m.*

Explore the origins of Disney Cruise Line and the latest and greatest innovations conjured especially for the Disney Dream in this fascinating and entertaining behind-the-scenes program.

## BRAINTEASERS TRIVIA

*687 Pub, Deck 4, Aft - 7:30 p.m.*

Put your brain to the test as your Club Host, David, pushes the limits of your knowledge with some classic Brainteasers. Can you figure them out?

## VARIETY SHOW: KNIGHT MAGIC

*Evolution, Deck 4, Aft - 10:45 p.m.*

Featuring the Magic & Illusion of Kyle Knight & Mistie, in this Adult exclusive cabaret style show. *Repeat Show.*



# FINAL JACKPOT BINGO



**D Lounge, Deck 4, Midship**  
**Card Sales - 3:45 p.m.**  
**Game Starts - 4:15 p.m.**

The snowball jackpot **MUST BE WON** at this final session! Beat the line and get your cards early. Who will be the lucky winner? It could be you!



# YOUTH ACTIVITIES HIGHLIGHTS

## Dine & Play

A convenience for families dining at 8:15 p.m., our Youth Activities Counselors will be available at 9:15 p.m. at the entrance of Royal Palace, Enchanted Garden and Animator's Palate dining rooms to bring registered children to join the fun in the Youth Activity areas.



**Deck 5, Midship (7-1440) 4:00 p.m. - 12:00 mid**  
(3 - 12 years old)

## MAGIC PLAYFLOOR

4:15 p.m. & 8:00 p.m.

Explore the latest technology of the Disney's Oceaneer Club Magic PlayFloor.

## TINKER BELL'S TALENT SHOW

5:00 p.m.

Tinker Bell has come from Pixie Hollow to Disney Cruise Line to help young cruisers discover their Fairy Talents.



**Deck 5, Midship (7-1445) 5:00 p.m. - 12:00 mid**  
(3 - 12 years old)

## PIRATES OF THE CARIBBEAN: TIDES OF FORTUNE

7:15 p.m.

Inspired from the Pirates of the Caribbean saga, during this interactive computer game, cruisers in the Disney's Oceaneer Lab get a chance to sail the seven seas!

## GET THE HOOK

8:45 p.m.

A villainous villain has stolen Captain Hook's prized golden hook. Become a member of the Top Deck Detective Agency and help solve the clues to retrieve Hook's hook.



**Deck 13, Midship (7-9743) 4:00 p.m. - 12:00 mid**  
(11 - 14 years old)

## GHOST VOYAGERS

9:00 p.m.

The ship has come upon some mysterious waters and strange things are afoot. Join a paranormal expert to help investigate the area and track down any evidence of ghostly beings on the ship.

## FAREWELL DANCE PARTY

11:30 p.m.

Join your fellow teen cruisers for this fun-filled dance party.



**Entrance on Deck 4, Forward (7-9417)**  
(14 - 17 years old)  
5:00 p.m. - 1:00 a.m.

## ANIMATION ANTICS

5:30 p.m.

Learn simple animation techniques and then put your new skills to use by drawing some of your favorite Disney Characters.

## THAT'S HILARIOUS

6:00 p.m.

Ever wanted to show off your comedy skills? Then be a part of the cast for the crazy improv show "That's Hilarious" and put on a live show for your friends.

# BUENA VISTA THEATRE

## Today's Movies

OC - Open Captioning

DOLBY 3D

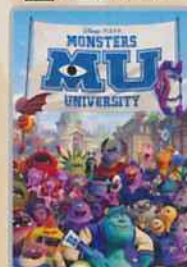


9:00 a.m.

Duration: 1 hr 43 mins

Rating: G

DOLBY 3D



2:45 p.m.

Duration: 1 hr 43 mins

Rating: G



11:15 a.m. & 10:45 p.m.

Duration: 2 hrs 10 mins

Rating: PG-13



5:00 p.m. & 8:00 p.m.

Duration: 2 hrs 29 mins

Rating: PG-13

Repeat Show



## ADULT VARIETY ACT

Featuring the  
Magic and Illusion  
of Knight Magic,  
as they entertain you in this  
adult exclusive show.

**Evolution (18+),  
Deck 4, Aft,  
10:45 p.m.**

## Haunted Stories of the Sea

The Halloween tradition of telling ghostly tales comes to the Disney Dream. Featuring frightening visuals, creepy sounds and spooky effects, our Sea Captain will share stories of the strange, the bizarre and the just plain scary that will leave even the bravest of souls with a chill.

**Deck 11 & 12,  
Midship,  
11:00 p.m.**

## YOUTH ACTIVITIES OPEN HOUSE

Open House is an opportunity for all to come and participate in a variety of exciting activities and free time in It's A Small World Nursery, the Oceaneer Club, Oceaneer Lab, Edge and Vibe throughout the cruise. During these times secured programming will still be offered in the other venues for those looking to check their children into care.

**It's a Small World Nursery:** 8:00 a.m. - 9:00 a.m.

**Disney's Oceaneer Lab:** 4:00 p.m. - 5:00 p.m.

**Disney's Oceaneer Club:** 9:00 a.m. - 4:00 p.m.

**Vibe:** 4:00 p.m. - 5:00 p.m.

**Edge:** 3:00 p.m. - 4:00 p.m.



# MORE TO ENJOY WHILE ONBOARD

## PLAN YOUR NEXT CRUISE

Book a future cruise today and you'll save 10%, receive up to a \$200 onboard credit, and pay a reduced deposit! Tune to Channel 8 on your stateroom TV for details and visit the Future Cruise Sales Desk, Deck 4, Midship.

## STAY CONNECTED WITH CELLULAR SERVICE

Cell phone and wireless PDA service is available in guest staterooms through most plans. Pricing varies depending upon your wireless provider and usually includes International roaming rates.

## DISNEY VACATION CLUB® GROUP PREVIEW

Want to learn more about taking magical vacations year after year? Please see a Disney Vacation Club representative on Deck 4, Midship, or call 7-2805 from your stateroom phone for more information about our interactive group presentation.



## SALON TASTER SPECIAL

Choose from scalp massage, European facial, hand treatment, sunglow make-over, hair treatment, eye-collagen treatment, foot and ankle massage and neck and shoulder massage.

Three for \$99, five for \$119, and eight for \$139.

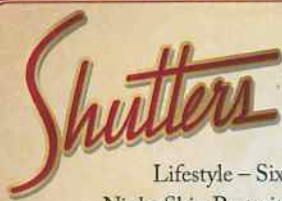
*Senses Spa & Salon, Deck 11, Forward, Ext. 7-1465*

## DREAM OF DIAMONDS

... and awake in Whitecaps where you will be convinced once and for all that dreams really do come true. Provenance Gems presents a collection of exotic colors set in gold. Experience the sparkle while you can, available here on the Disney Dream.

**WHITECAPS**

*Deck 3, Forward*



## PROFESSIONAL PORTRAITS TONIGHT!

Lifestyle - Six Guests maximum  
Night Ship Portrait - Six Guests maximum

**5:15 p.m. - 6:00 p.m.**

**7:15 p.m. - 8:30 p.m.**

Create a personal storybook of your cruise to share with family and friends.  
Photobook orders close at 10:00 p.m.

## Disney Cruise Line PORT ADVENTURES

Welcome to Disney's Island Paradise Castaway Cay! Today is the day to relax in an inner tube, snorkel in the Caribbean blue, get up-close and personal to real life stingrays or fly high in the sky on a parasail excursion during a breathtaking aerial adventure. Visit Marge's Barges or one of the rental locations and our friendly team will assist in making any last minute bookings.

## PORT ADVENTURES MEETING TIMES AND LOCATIONS

As per ticket	Castaway Ray's Stingray Adventure	Gil's Fins and Boats
As per ticket	Castaway Cay Bottom Fishing	Marge's Barges
As per ticket	Glass Bottom Boat	Marge's Barges
As per ticket	Nature Walk and Kayaking	As per ticket
As per ticket	Parasailing	Marge's Barges
9:00 a.m.	Teen Wild Side	Vibe
As per ticket	Single & Double Watercraft	Boat Beach

## CASTAWAY CAY ISLAND RENTALS

Bicycles	8:30 a.m. - 4:00 p.m.	Bike Rentals
Boats	8:30 a.m. - 4:00 p.m.	Boat Beach
Snorkeling Gear	8:30 a.m. - 3:30 p.m.	Gil's Fins and Boats / Flippers and Floats
Float	8:30 a.m. - 3:30 p.m.	Gil's Fins and Boats / Flippers and Floats
Getaway Package	8:30 a.m. - 3:30 p.m.	Gil's Fins and Boats / Flippers and Floats

Reservations can be made on the island at each rental location. Castaway Ray's walk up reservations can be made at Gil's Fins and Boats on Family Beach.

## SHOPPING

### GOING ONCE, GOING TWICE, YOURS!

The silent auction will close tonight at 8:00 p.m. Make sure you come place a bid on your favorite pieces. Also own a piece of the Disney Dream with an artistic rendering of a Disney character painted on a Mickey head carved from actual ship metal. Vista Gallery, Deck 4, Midship.

### HAPPY ANNIVERSARY, DISNEY CRUISE LINE!

Happy Anniversary, Disney Cruise Line! To celebrate its 15th year, an array of Disney Cruise Line 15th Anniversary items will be available at Sea Treasures. From pins to graphic tees, you can find a commemorative souvenir for the whole family! Deck 3, Forward.

### TAX AND DUTY FREE HIGHLIGHT

Any liquor purchases you have made throughout the voyage will be delivered to your stateroom today, packaged safely for your journey home. Experience the fragrances, jewelry, and liquors we have onboard at excellent duty free prices tonight as we will not be open in Port Canaveral. Satisfy your sweet tooth with our selection of Godiva chocolate. Whitecaps, Deck 3, Forward.

### CAPTAIN'S SIGNING

Come to Whitecaps at 7:15 p.m. to have your Disney Dream merchandise signed by the Master of the Disney Dream, Captain Guus. Stunning replica ships are available in Sea Treasures, Deck 3, Forward. Beautiful Disney Cruise Line prints are available in the Vista Gallery, Deck 4, Midship.

### CASTAWAY CAY TREASURES

She Sells Seashells And Everything Else and Buy the Seashore are your island memory destinations for apparel, plush, postcards, swimwear, and, well, everything else! Get your Run Disney Castaway Cay 5K tee exclusively at Buy the Seashore. Island purchases may be delivered to the ship for pickup after 6:00 p.m. in Whitecaps.

Due to port regulations, when the ship is docked, the stores will remain closed.

## IMPORTANT INFORMATION

### Security Notice

All Guests (including children) who wish to disembark the ship are required to present their Key to the World card at the gangway. A photo ID is also required for those Guests who are 18 years of age or older. Guests under the age of 18 are required to have a Parent, Guardian or other responsible adult sign an authorization form at the time it is given out if they wish to go ashore unaccompanied. Authorization forms are available at the gangways and Guest Services.

### Cold and Flu Reminder

Please wash hands frequently and thoroughly, particularly before meals. Contact the Health Center by dialing 7-1923, should anyone in your party become ill.

### Corridor Quiet Hours

As a courtesy to all our Guests, please recognize quiet hallway hours from 10:00 p.m. to 8:00 a.m.

### Inclement Weather

For the safety of all Guests, outdoor events may be changed due to unforeseen weather conditions.

### Environmental Message

With Disney's commitment to the environment, please refrain from throwing anything over the ship's side. Thank you!

### No Reserved Seats Policy

As a courtesy to all our Guests, we kindly advise that the saving of seats is not permitted in the Walt Disney Theatre, and the saving of the sun loungers is not permitted on Deck 11, 12 and 13. Items left unattended will be returned to lost and found at Guest Services, Deck 3, Midship.

### Smoking

For the comfort of our guests the following areas are designated as Smoking areas:

- Deck 13, Forward, port side, by "Currents"
- Deck 12, Aft, port side outdoor area that is accessible through the Meridian Lounge
- Deck 4, Aft, port side from 6:00 p.m. to 6:00 a.m. only (all of Deck 4 is no smoking from 6:00 a.m. to 6:00 p.m.)
- Smoking is permitted on stateroom verandahs. Smoking is prohibited inside all guest staterooms. Guests found smoking in their staterooms will be charged a \$250 stateroom recovery fee. Electronic cigarettes may only be used in designated smoking areas.

### Walt Disney Theatre

Theatrical performances may use artificial fog, strobe lights, pyrotechnics and other special effects. For the safety of our performers and the comfort of those around you, the use of any photography, video recording devices or any electronic equipment is prohibited.

### Verandah Safety

Please do not leave any combustible materials on your balcony when not present in your stateroom for safety reasons.



Morning	8:30	8:45	9:00	9:15	9:30	9:45	10:00	10:15	10:30	10:45	11:00	11:15	11:30	11:45	12:00	12:15	12:30	12:45	1:00	1:15	1:30				
FUNNEL VISION	Fantasia 2000 (G) Funnel Vision					Aladdin (G) Funnel Vision					Virtual Tours Funnel Vision					Cinderella (G) Funnel Vision									
BUENA VISTA THEATRE	Monsters University (G)					Duration: 1 Hour 43 Minutes					Iron Man 3 (PG-13)												Duration: 2 Hours 10 Minutes		
CHARACTER	Donald Gangway	Pluto Rustmore	Chip & Dale Post Office	Minnie Scuttles Cove	Hook & Smee Post Office	Mickey Rustmore	Chip & Dale Post Office	Goofy Scuttles Cove						Character Dance Party Island Gazebo 1											
FUN FOR ALL AGES			Meet in Evolution at 8:15 a.m. (Departs at 8:30 a.m.) (12+ Years and Older)		Island Power Walk Meet at the Post Office					Crab Races Island Gazebo 1					Crab Races Island Gazebo 2										
											DJ Marius Spins on the Island Island Gazebo 1					Basketball Free Throw In Da Shade					Family Whale Dig Monstro Point				
ADULTS	Friends of Bill W. Outlook		Wake Up & Stretch Class Senses Fitness Center			Burn Fat Faster Senses Fitness Center			Yoga on the Beach Serenity Bay								Basketball Free Throw In Da Shade					Club 18'21 - Basketball Free Throw In Da Shade			
VIBE 14-17 YEARS OLD	The Wild Side - Meet at Vibe					Hangin' at Teen Hideout												Lunch at Cookies Too					Hangin' at Teen Hideout		
EDGE 11-14 YEARS OLD						Sand Soccer					Hangin' at In Da Shade					Lunch at Cookies Too					Pelican Plunge				
SCUTTLES COVE	Water Games					The Dig at Monstro's Point					Treasure Hunt					Lunch					Sand Castle Competition				
OCEANEER CLUB 3-12 YEARS OLD	Youth Activities Open House																								
Afternoon	1:45	2:00	2:15	2:30	2:45	3:00	3:15	3:30	3:45	4:00	4:15	4:30	4:45	5:00	5:15	5:30	5:45	6:00	6:15	6:30	6:45				
FUNNEL VISION	Mary Poppins (G) Funnel Vision					Monsters University (G)					Classic Cartoons Funnel Vision					Tarzan (PG) Funnel Vision									
BUENA VISTA THEATRE	Monsters University (G)					Duration: 1 Hour 43 Minutes					The Lone Ranger (PG-13) Duration: 2 Hours 29 Minutes														
CHARACTER											Mickey DK 4, Balcony					Goofy Preludes									
FUN FOR ALL AGES											Bingo Pre Sales					Final Jackpot Bingo D Lounge					Live Music with Rob Sanders District Lounge				
	Live Music with Matt Bruno Island Gazebo 1					DJ Marius Spins on the Island Island Gazebo 1					Disney Vacation Club Group Preview Evolution					Live Music with The Dreamers Lobby Atrium									
ADULTS	Making of the Dream Evolution					Beer Tasting (21+) 687 Pub (Pre Book, Nom. Fee)					Xbox® Kinect™ Challenge 687 Pub														
VIBE 14-17 YEARS OLD	Hangin' at Teen Hideout					Art of The Theme Show Tour Meet at Meridian					Improving Posture Senses Fitness Center					Pathway to Pilates Senses Fitness Center					Acupuncture: Chinese Herbs Senses Spa & Salon				
EDGE 11-14 YEARS OLD	Hangin' at In Da Shade					Inside Teen Hideout Until 4:00 p.m.					Pool Party in Vibe					Open for Tweens					Anyone Can Cook				
SCUTTLES COVE	Caribbean Beach Party					Capture the Flag					Scuttles Cove Closes at 4:00 p.m.														
OCEANEER LAB 3-12 YEARS OLD						Youth Activities Open House					Anyone Can Cook					Dinner									
OCEANEER CLUB 3-12 YEARS OLD	Youth Activities Open House					Magic Playfloor					Tinker Bell's Talent Show					Dinner									
Evening	7:00	7:15	7:30	7:45	8:00	8:15	8:30	8:45	9:00	9:15	9:30	9:45	10:00	10:15	10:30	10:45	11:00	11:15	11:30	11:45	12:00				
FUNNEL VISION	The Jungle Book (G) Funnel Vision					The Princess and the Frog (G) Funnel Vision																			
BUENA VISTA THEATRE	The Lone Ranger (PG-13) Duration: 2 Hours 29 Minutes					Iron Man 3 (PG-13)										Duration: 2 Hours 10 Minutes									
CHARACTER	Minnie Lobby Atrium (V)					Mickey DK 4, Balcony										Lobby Atrium									
FUN FOR ALL AGES	Captain's Signing Whitcaps															Xbox® Kinect™ Challenge D Lounge									
						Disney Trivia D Lounge					Walt Disney Theatre					Live Music with The Dreamers Lobby Atrium					Family Superstar Karaoke D Lounge				
ADULTS	Live Music with Matt Bruno Quiet Cove					Brain Teasers Trivia 687 Pub					MLB Playoffs: Boston Red Sox vs. Detroit Tigers 687 Pub (Subject to satellite availability)					DJ Marius Evolution					80's Music Trivia Evolution				
VIBE 14-17 YEARS OLD	Smoothie Hour					Pump It Up					Bring It					Zombified Premiere									
EDGE 11-14 YEARS OLD	Boys and Girls Chill					Ghost Voyagers					Final Farewell Slideshow					Farewell Dance Party									
OCEANEER LAB 3-12 YEARS OLD																									
OCEANEER CLUB 3-12 YEARS OLD																									

Symbol for activities that will be repeated during the cruise



FOLD

Fold along the dotted lines and take me with you so you don't miss any of the fun!

FOLD

IN THE SPOTLIGHT SERIES  
 SAVE IT! SERIES  
 JUMP ON SERIES  
 CREATE & INVENT SERIES  
 OPEN HOUSE  
 CLUBHOUSE SERIES  
 STORYBOOK SERIES



WEDNESDAY, OCTOBER 16, 2013 - DISNEY'S CASTAWAY

# BUENA VISTA THEATRE

OC - Open Captioning

DOLBY 3D

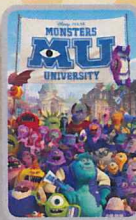
DOLBY 3D



9:00 a.m.  
Duration:  
1 hr 43 mins  
Rating: G



11:15 a.m.  
& 10:45 p.m.  
Duration:  
2 hrs 10 mins  
Rating: PG-13



2:45 p.m.  
Duration:  
1 hr 43 mins  
Rating: G



5:00 p.m.  
& 8:00 p.m.  
Duration:  
2 hrs 29 mins  
Rating: PG-13

## Character Appearances

### DONALD DUCK

Gangway  
8:45 a.m. & 9:45 a.m.

### CAPTAIN HOOK & MR SMEE

Post Office  
9:00 a.m. & 10:00 a.m.

### PLUTO

Mt. Rustmore - 9:15 a.m.  
Scuttle's Cove - 10:15 a.m.  
Preludes - 5:15 p.m.

### MICKY MOUSE

Scuttle's Cove - 9:15 a.m.  
Mt. Rustmore - 10:15 a.m.  
Deck 4, Balcony  
5:15 p.m. & 7:30 p.m.

### DAISY DUCK

Gangway  
9:15 a.m. & 10:15 a.m.

### CAPTAIN JACK SPARROW

Marge's Barges - 9:30 a.m.  
Pelican Point - 10:45 a.m.

### CHIP & DALE

Post Office  
9:30 a.m. & 10:30 a.m.

### GOOFY

Mt. Rustmore - 9:45 a.m.  
Scuttle's Cove - 10:45 a.m.  
Preludes - 5:45 p.m.

### MINNIE MOUSE

Scuttle's Cove - 9:45 a.m.  
Mt. Rustmore - 10:45 a.m.  
Lobby Atrium (V) - 7:30 p.m.

### CHARACTER DANCE PARTY

Island Gazebo 1 - 12:15 p.m.

### DISNEY FRIENDS IN HALLOWEEN COSTUMES

Lobby Atrium - 3:00 p.m.

### DISNEY PRINCESSES

D Lounge - 7:30 p.m.

### SEA YA REAL SOON

Lobby Atrium - 10:15 p.m.

## YOUTH ACTIVITIES THEMED EXPERIENCES

**CLUBHOUSE SERIES**  
focuses on movement and features content which appeals to younger children.

**STORYBOOK SERIES**  
is designed with a strong connection to the Disney classic stories.

**JUMP UP! SERIES**  
includes large group games & movement-oriented activities.

**CREATE & INVENT SERIES**  
will have a tactile focus allowing children to create and admire their work.

**IN THE SPOTLIGHT SERIES**  
focuses on children's stage presence with lots of activities and enthusiasm.

**SOLVE IT! SERIES**  
are less active, but will challenge children with problem/solutions-based activities.

### OPEN HOUSE

activities for families, adults and children of all ages to enjoy together.

## SHIP DIRECTORY

### YOUTH ACTIVITIES

DISNEY'S OCEANEER CLUB	DECK 5, MID	4:00 PM - 12:00 MID
DISNEY'S OCEANEER LAB	DECK 5, MID	5:00 PM - 12:00 MID
EDGE	DECK 13, MID	4:00 PM - 12:00 MID
SCUTTLE'S COVE	CASTAWAY CAY	9:00 AM - 4:00 PM
VIBE	DECK 4, FWD	5:00 PM - 1:00 AM
IT'S A SMALL WORLD NURSERY	DECK 5, MID	9:00 AM - 12:00 MID

### POOLS & MORE

\*Children under 12 years of age must have adult supervision in all pools.

AQUADUCK	DECK 12, MID	9:00 AM - 11:00 PM
DONALD'S POOL	DECK 11, MID	9:00 AM - 6:00 PM 8:00 PM - 10:00 PM
MICKEY'S POOL	DECK 11, MID	6:00 AM - 12:00 MID
MICKEY'S SLIDE	DECK 11, MID	10:00 AM - 6:00 PM
NEMO'S REEF	DECK 11, MID	10:00 AM - 6:00 PM
QUIET COVE POOL	DECK 11, FWD	6:00 AM - 12:00 MID

### RECREATION

GOLF/SPORTS SIMULATORS	DECK 13, AFT	1:00 PM - 6:00 PM
GOOFY GOLF	DECK 13, AFT	8:00 AM - 10:00 PM
GOOFY'S SPORTS DECK	DECK 13, AFT	8:00 AM - 6:00 PM
MARGE'S BARGES	CASTAWAY CAY	9:00 AM - 3:30 PM
MIDSHIP DETECTIVE AGENCY	DECK 5, MID	8:00 AM - 11:00 PM
PORT ADVENTURES DESK	DECK 5, MID	
SENSES FITNESS CENTER	DECK 11, FWD	6:00 AM - 10:00 PM

### GENERAL INFORMATION

ARR-CADE	DECK 11, AFT	24 HOURS
BUENA VISTA THEATRE	DECK 4 & 5, MID	SHOWTIMES
DISNEY VACATION CLUB	DECK 4, MID	5:30 PM - 10:00 PM
FUTURE CRUISE SALES DESK	DECK 4, MID	8:00 AM - 10:00 AM 3:00 PM - 9:00 PM
GUEST SERVICES	DECK 3, MID	24 HOURS
HAIRBRAIDING	DECK 11, MID	5:30 PM - 9:30 PM
MEDICAL HEALTH CENTER	DECK 1, FWD	9:30 AM - 11:00 AM 4:30 PM - 7:00 PM
PORT & SHOPPING DESK	DECK 4, MID	
PRELUDES	DECK 3, FWD	5:45 PM - 6:30 PM 8:00 PM - 8:45 PM
SENSES SPA AND SALON	DECK 11, FWD	8:00 AM - 10:00 PM
SHUTTERS PHOTO GALLERY	DECK 4, MID	5:00 PM - 11:00 PM
WALT DISNEY THEATRE	DECK 3 & 4, FWD	SHOWTIMES

### SHOPPING

MICKEY'S MAINSAIL	DECK 3, FWD	5:30 PM - 11:30 PM
SEA TREASURES	DECK 3, FWD	5:30 PM - 11:30 PM
QUACKS	DECK 11, MID	
VISTA GALLERY	DECK 4, MID	6:00 PM - 11:00 PM
WHITECAPS	DECK 3, FWD	5:30 PM - 11:30 PM
WHOZITS & WHATZITS	DECK 11, MID	6:45 PM - 10:00 PM

DUE TO PORT REGULATIONS, WHEN THE SHIP IS DOCKED, THE STORES MUST REMAIN CLOSED.

## GOOFY'S SPORTS

### Digital Simulators

#### Sports Simulator

(Basketball, Baseball, Hockey, or Soccer)

\$12 / half hr, \$20 / hr

#### Golf Simulator

\$25 / half hr, \$45 / hr

Reservations can be made at the Port Adventures Desk, Deck 5, Midship or at the Simulators, Deck 13, Aft



DINNER MENU

Animator's Palate: Pacific Rim Cuisine  
Enchanted Garden: Continental Market Cuisine  
Royal Palace: French Dinner  
Dining Times: 5:45 p.m. & 8:15 p.m.

DRINK OF THE DAY

Bahama Mama (Alcoholic)  
Coco Bali (Non Alcoholic)

WEATHER FORECAST

Wednesday: Sunny  
High: 78°F/26°C  
Thursday: Partly Cloudy  
High: 78°F/26°C

Evening Attire: Optional Dress Up

## DINING & LOUNGES

### BREAKFAST

CABANAS CONTINENTAL	DECK 11, AFT	7:00 AM - 7:30 AM
CABANAS	DECK 11, AFT	7:30 AM - 10:45 AM
ENCHANTED GARDEN	DECK 2, MID	8:00 AM - 10:30 AM
ROYAL PALACE	DECK 3, MID	8:00 AM - 9:30 AM

### LUNCH

CABANAS	DECK 11, AFT	12:00 PM - 1:30 PM
COOKIES	CASTAWAY CAY	11:30 AM - 2:00 PM
COOKIES TOO	CASTAWAY CAY	11:30 AM - 2:00 PM
FILLMORE'S FAVORITES	DECK 11, MID	10:30 AM - 6:00 PM
LUIGI'S PIZZA	DECK 11, MID	10:30 AM - 6:00 PM
TOW MATER'S GRILL	DECK 11, MID	10:30 AM - 6:00 PM

### DINNER

ANIMATOR'S PALATE	DECK 3, AFT	5:45 PM & 8:15 PM
ENCHANTED GARDEN	DECK 2, MID	5:45 PM & 8:15 PM
ROYAL PALACE	DECK 3, MID	5:45 PM & 8:15 PM
PALO & REMY (18+)	DECK 12, AFT	6:00 PM - 9:00 PM

(RESERVATIONS REQUIRED & COVER CHARGE APPLICABLE, DIAL#7-9734)

TOW MATER'S GRILL	DECK 11, MID	6:00 P.M. - 11:00 PM
-------------------	--------------	----------------------

### LATE NIGHT SNACKS

LUIGI'S PIZZARIA	DECK 11, MID	9:30 PM - 12:00 MID
------------------	--------------	---------------------

### ADDED FEATURES

BEVERAGE STATION	DECK 11, MID	24 HOURS
EYE SCREAM	DECK 11, MID	10:30 AM - 12:00 MID
ROOM SERVICE	DIAL 0	CLOSES AT 1:30 AM

### ENTERTAINMENT - LOUNGES - BARS

Adults must be 21 and older to consume alcoholic beverages.

687 PUB	DECK 4, AFT	4:00 PM - 9:00 PM
687 PUB (18+)	DECK 4, AFT	9:00 PM - 12:30 AM
BON VOYAGE	DECK 3, MID	3:00 PM - 11:00 PM
COVE BAR (18+)	DECK 11, FWD	11:00 AM - 12:00 MID
COVE CAFE (18+)	DECK 11, FWD	7:00 AM - 12:00 MID
CURRENTS (18+)	DECK 13, FWD	2:00 PM - 11:00 PM
D LOUNGE	DECK 4, MID	SHOWTIMES
DISTRICT LOUNGE	DECK 4, AFT	4:30 PM - 9:00 PM
DISTRICT LOUNGE (18+)	DECK 4, AFT	9:00 PM - 12:00 MID
EVOLUTION (18+)	DECK 4, AFT	10:00 PM - 2:00 AM
FROZONE TREATS	DECK 11, MID	1:00 PM - 11:00 PM
MERIDIAN (18+)	DECK 12, AFT	5:00 PM - 12:00 MID
OUTLOOK	DECK 14, MID	
PINK (18+)	DECK 4, AFT	5:00 PM - 12:00 MID
SKYLINE (18+)	DECK 4, AFT	5:00 PM - 12:00 MID
VISTA CAFE	DECK 4, MID	7:30 AM - 11:00 PM
WAVES	DECK 12, AFT	3:00 PM - 7:00 PM

### CASTAWAY CAY BARS

CONCHED OUT BAR	CASTAWAY CAY	9:00 AM - 4:00 PM
CASTAWAY AIR BAR	CASTAWAY CAY	9:00 AM - 3:30 PM
HEADS UP BAR	CASTAWAY CAY	9:00 AM - 3:30 PM
SAND BAR	CASTAWAY CAY	9:00 AM - 4:00 PM

Consumers who order raw or partially cooked, ready-to-eat food of animal origin, are hereby informed that the food is not sufficiently cooked to ensure its safety.

## IMPORTANT NUMBERS

Fire/Security:	7-3001
Medical EMERGENCY:	7-3000
Health Center:	7-1923

All Ashore:  
Approx. 8:30 a.m.

All Aboard:  
5:00 p.m.

(H) Hallway - (S) Starboard Side - (P) Port Side - (V) Vestibule

For details of daily Disney character appearances, refer to the character line on your Navigator Grid, or the digital character board in the Lobby Atrium.



# Disney's Castaway CAY

Disney CRUISE LINE



## ATTRACTIONS

- A Arrival Plaza**
- B Post Office**  
Castaway Cay Postmark
- C Marge's Barges & Sea Charters Dock**  
Parasailing, Fishing Charters & More
- D Boating Harbor**
- E Scuttle's Cove**  
Children's Program Areas
- F Boat Beach**  
Watercraft Rental
- G Monstro Point**  
Whale Dig Site
- H Castaway Ray's Stingray Adventure**
- I Gil's Fins and Boats**  
Snorkel, Tube & Float Rentals
- J Gazebos (2)**

- K Castaway Family Beaches (2)**
- L Snorkeling Lagoon**
- M Swimming Lagoon**
- N In-Da-Shade Games**  
Basketball, Billiards, Ping-Pong & More
- O Flippers and Floats**  
Snorkel, Tube & Float Rentals
- P Pelican Plunge**  
Water Slide
- Q Hideout**  
Teens Only
- R Bike Rentals**
- S Beach Sports**  
Tetherball, Volleyball, Soccer
- T Spring-A-Leak**  
Wet Play Area
- U Beach Cabanas 1-17**
- V The Windsock Hut**  
Float Rentals for Adult Beach

- W Massage Cabanas**
- X Serenity Bay**  
Exclusive Beach Area for Adults  
18 Years & Older
- Y Beach Cabanas 18-21**
- Z Observation Tower**

## FOOD AND BEVERAGE

- 1 Pop's Props and Boat Repair**  
Covered Seating
- 2 Dig In**  
Covered Seating
- 3 Cookie's BBQ**
- 4 Conched Out Bar**  
Frozen Specialty Drinks, Cocktails & Beer
- 5 Outdoor Seating (3)**

- 6 Gumbo Limbo**  
Covered Seating
- 7 Heads Up Bar**  
Frozen Specialty Drinks, Cocktails & Beer
- 8 Grouper**  
Covered Seating
- 9 Sand Bar**  
Frozen Specialty Drinks, Cocktails & Beer
- 10 Cookie's Too BBQ**
- 11 Castaway Air Bar**  
Frozen Specialty Drinks, Cocktails & Beer

## MERCHANDISE

- 12 She Sells Sea Shells and Everything Else**  
Castaway Cay Logo Merchandise
- 14 Buy the Seashore**  
Castaway Cay Logo Merchandise

- 15 Bahamian Retail**  
Bahamian Arts & Crafts

## THIS AND THAT

- 16 Kargo Handling Tram Stop**
- 17 Scuttle's Cove Tram Stop**
- 18 Pelican Point Tram Stop**
- 19 Serenity Bay Tram Stop**
- + First Aid**
- Restrooms & Outdoor Showers**
- Fun Photo Opportunities**
- Bike/Nature Trail**