

PERSONAL NAVIGATOR



SATURDAY, DECEMBER 7, 2013

Sunrise: 6:44 a.m. Sunset: 5:18 p.m.

Evening Attire: Optional Dress Up

All Ashore: 8:30 a.m.

All Aboard: 5:00 p.m.

Gangway: Deck 1, Midship/Deck 1, Aft &

Saturday: Chance of Rain High: 75°F/24°C

Sunday: Sunny High: 78°F/26°C

DISNEY'S CASTAWAY CAY

Disney's Believe

Genie from Aladdin and many of Disney's most beloved magic makers take a father on a magical journey to show him that anything is possible if you just believe.

WALT DISNEY THEATRE

Deck 3 & 4, Forward

6:15 P.M. & 8:30 P.M.

As a courtesy to all Guests, we kindly advise that the saving of seats is **not** permitted in the Walt Disney Theatre.



Assistance available at the entrance to the Walt Disney Theatre 30 minutes prior to show time.



Disney's Castaway Cay

Reserved exclusively for Guests on Disney Cruise Line Bahamian and Caribbean cruise vacations, Castaway Cay is Disney's private port-of-call paradise. On this island, enjoy tropical leisure activities, such as snorkeling, boating, swimming and sunbathing.

Friendly Reminders

- Serenity Bay is reserved for Guests 18 and older.
- Your Key To The World Card will need to be used for all transactions on Disney's Castaway Cay except for the Post Office.
- A limited number of all-terrain wheelchairs are available across from Scuttle's Cove.
- For your convenience, beach towels are available as you leave the ship; please return them at the gangway at the end of your day.
- Due to our commitment to the environment, we ask that seashells, coral and other natural treasures be left undisturbed at Disney's Castaway Cay for all to enjoy.

Debark Talk Broadcast

Your Cruise Director, Christiaan, presents important information, including U.S. Customs and Border Protection procedures. Tune in to Channel 5 of your stateroom TV. Please place your luggage outside your stateroom between 8:30 p.m. - 10:30 p.m.

Thank you in advance for completing your comment card.

SEA YA' REAL SOON!

Mickey and some of his Disney friends invite you to join them in the ship's Atrium. You won't want to miss this very special farewell meet and greet.

Bring your cameras!

10:15 p.m.

Lobby Atrium,
Deck 3, Midship

Don't Miss:

runDisney: Castaway Cay 5K (12+)

Evolution, Deck 4, Aft - 8:15 a.m.

Runners (12+) meet at 8:15 a.m. We will depart the ship at 8:30 a.m., and make our way to the Bike Rentals where the run will begin.

Crab Races

Island Gazebo 1 - 11:45 a.m.

Island Gazebo 2 - 12:45 p.m.

Watch some local sea creatures make a break for the finish line.

Captain's Signing

Whitecaps, Deck 3, Forward - 7:15 p.m.

Meet the Master of the Disney Dream and have your cruise memories signed.

80's Music Challenge (18+)

Evolution, Deck 4, Aft - 10:45 p.m.

"Moon Walk" back to the 80's as we put your musical knowledge of the decade to the test.



Visit The Future Cruise Desk Early Today

Please visit the Future Cruise Desk, Deck 4, Midship, as early as possible today. The last day of the cruise tends to get busy in the evening, and we want to be sure you have the opportunity to save 10% on your next cruise, receive up to a \$200 onboard credit, and pay a reduced deposit!

DINNER MENU

Animator's Palate: Pacific Rim Cuisine
Enchanted Garden: Continental Market
Royal Palace: French Dinner

DRINK OF THE DAY

Bahama Mama (Alcoholic)
Coco Bali (Non Alcoholic)

IMPORTANT NUMBERS

Fire/Security: 7-3001
Medical Emergency: 7-3000
Health Center: 7-1923

FUN FOR ALL AGES



RUNDISNEY: CASTAWAY CAY 5K (12+)

Evolution, Deck 4, Aft - 8:15 a.m.

Runners (12+) meet at 8:15 a.m. We will depart the ship at 8:30 a.m., and make our way to the Bike Rentals where the run will begin.

ISLAND POWER WALK

Meet at the Post Office - 9:30 a.m.

Join your Cruise Staff for a brisk walk around the island. Meet outside, on the pier by the Post Office. Meet time is 9:30 a.m. Walk leaves promptly at 9:45 a.m.

DISNEY VACATION CLUB GROUP PREVIEW

Evolution, Deck 4, Aft - 4:30 p.m.

Want to learn more about taking magical vacations year after year? Please see a Disney Vacation Club representative on Deck 4, Midship, or call 7-2805 from your stateroom phone for more information about our interactive group presentation.



CAPTAIN'S SIGNING

Whitecaps, Deck 3, Forward - 7:15 p.m.

Meet the Master of the Disney Dream and have your cruise memories signed.

OFFICER PIN TRADING

Preludes, Deck 3, Forward - 7:30 p.m.

Come trade pins with the officers of the Disney Dream.

DREAM QUEST

D Lounge, Deck 4, Midship - 9:45 p.m.

Enjoy the wildest and wackiest scavenger team event on the seven seas!

FAMILY SUPERSTAR KARAOKE

D Lounge, Deck 4, Midship - 10:45 p.m.

Join your Cruise Staff in D Lounge tonight and sing along to your favorite song - fun for everyone.

ADULT ACTIVITY HIGHLIGHTS

SENSES SPA FITNESS CLASSES & SEMINARS



Metabolic Assessment - Senses Fitness Center - 7:00 a.m.

Body Sculpt Boot Camp - Goofy's Sports Deck - 8:00 a.m.

Wake Up & Stretch Class - Senses Fitness Center - 9:00 a.m.

Secrets To A Flatter Stomach - Senses Fitness Center - 10:00 a.m.

Yoga on the Beach - Serenity Bay - 10:30 a.m.

Good Feet: Improving Posture - Senses Fitness Center - 3:30 p.m.

Pathway to Pilates - Senses Fitness Center - 4:00 p.m.

TASTING CLASSES

Martini Tasting (21+) - Meridian (Pre Book, Nom. Fee) - 4:00 p.m.

Please make reservations for tastings at Guest Services for a nominal fee.

Tasting Seminars are only for Guests 21 and Older.

CLUB
18*21

CLUB 18*21 - BASKETBALL FREE THROW

In Da Shade Game Pavilion - 1:00 p.m.

CLUB 18*21 - MINI GOLF

Goofy's Sports Deck, Deck 13, Aft - 5:00 p.m.

CLUB 18*21 - FAREWELL

Evolution, Deck 4, Aft - 10:00 p.m.

ART OF THE THEME SHOW TOUR

Meet at Meridian, Deck 12, Aft - 2:45 p.m.

Join us on a guided ship tour and discover the key ingredients that make the Disney Dream cruise ship one-of-a-kind.

MAKING OF THE DREAM

Evolution, Deck 4, Aft - 3:00 p.m.

Explore the origins of Disney Cruise Line and the latest and greatest innovations conjured especially for the Disney Dream in this fascinating and entertaining behind-the-scenes program.

DREAM QUEST

Evolution, Deck 4, Aft - 10:15 p.m.

Enjoy the wildest and wackiest scavenger team event on the seven seas!



PULSE FEAT. GUEST DJ SIX 4

Evolution, Deck 4, Aft - 11:15 p.m.

Dance the night away as our Guest DJ Six 4 spins all the latest mixes from today with some 90's classics thrown in for you to get down!



\$5,000 FINAL MEGA JACKPOT BINGO



D Lounge, Deck 4, Midship

Card Sales - 4:00 p.m.

Game Starts - 4:30 p.m.

Join us for four cash prize games. If you cover your card in 46 numbers or less on the final game, \$5,000 could be yours! If not, we will still be playing for the HIGHEST cash prize of the cruise.

YOUTH ACTIVITIES HIGHLIGHTS

Dine & Play

A convenience for families dining at 8:15 p.m., our Youth Activities Counselors will be available at 9:15 p.m. at the entrance of Royal Palace, Enchanted Garden and Animator's Palate dining rooms to bring registered children to join the fun in the Youth Activity areas.



Deck 5, Midship (7-1440) 4:00 p.m. - 12:00 mid
(3 - 12 years old)

TINKER BELL'S TALENT SHOW

4:45 p.m.

Tinker Bell has come from Pixie Hollow to Disney Cruise Line to help young cruisers discover their Fairy Talents.

CAMP ROCKING OUT!

7:00 p.m.

Discover your inner Jonas Brother and relive the fun of Camp Rock films. Singing and dancing, it's more fun than you ever thought was possible!



Deck 5, Midship (7-1445) 5:00 p.m. - 12:00 mid
(3 - 12 years old)

HAPPY HOLIDAYS CARDS

5:00 p.m.

Create a holiday card for someone special.

PIRATES OF THE CARIBBEAN: TIDES OF FORTUNE

7:15 p.m.

Inspired from the Pirates of the Caribbean saga, during this interactive computer game, cruisers in the Disney's Oceaneer Lab get a chance to sail the seven seas!



Deck 13, Midship (7-9743) 4:00 p.m. - 12:00 mid
(11 - 14 years old)

FLUBBER

5:00 p.m.

Encounter solid, liquid, gas and make "Flubber-like Goo".

MARSHMALLOW OLYMPICS

7:00 p.m.

Learn all about this white sugary treat and everything it can do! Build a tower, go flying and test your agility - all with the help of a marshmallow.



Entrance on Deck 4, Forward (7-9417)
(14 - 17 years old)
5:00 p.m. - 1:00 a.m.

THAT'S HILARIOUS

6:00 p.m.

Ever wanted to show off your comedy skills? Then be a part of the cast for the crazy improv show "That's Hilarious" and put on a live show for your friends.

PUMP IT UP

9:00 p.m.

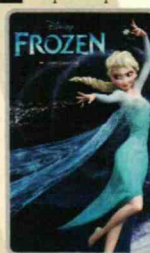
Join us in the Fitness Center for a Teen Only workout. Meet in Vibe to join in!

BUENA VISTA THEATRE

Today's Movies

OC - Open Captioning

OC - Open Captioning



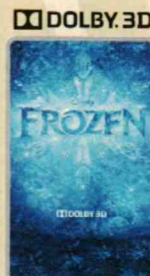
8:30 a.m.
Duration: 1 hr 48 mins
Rating: PG



11:00 a.m.
Duration: 1 hr 43 mins
Rating: G



1:00 p.m.
Duration: 1 hr 32 mins
Rating: PG



3:00 p.m.
Duration: 1 hr 48 mins
Rating: PG



5:30 p.m. & 8:15 p.m.
Duration: 1 hr 51 mins
Rating: PG-13



10:30 p.m.
Duration: 1 hr 51 mins
Rating: PG-13

SEA YA' REAL SOON!

Mickey and some of his Disney friends invite you to join them in the ship's Atrium. You won't want to miss this very special farewell meet and greet. Bring your cameras!

**Lobby Atrium,
Deck 3, Midship,
10:15 p.m.**



Bring the entire family and test your Disney knowledge in the high-tech interactive game show, Family Fusion.

**D Lounge,
Deck 4, Midship,
10:15 p.m.**

YOUTH ACTIVITIES OPEN HOUSE

Open House is an opportunity for all to come and participate in a variety of exciting activities and free time in It's A Small World Nursery, the Oceaneer Club, Oceaneer Lab, Edge and Vibe throughout the cruise. During these times secured programming will still be offered in the other venues for those looking to check their children into care.

It's a Small World Nursery: 8:00 a.m. - 9:00 a.m.
Disney's Oceaneer Lab: 9:00 a.m. - 5:00 p.m.
Vibe: 4:00 p.m. - 5:00 p.m.
Edge: 3:00 p.m. - 4:00 p.m.

MORE TO ENJOY WHILE ONBOARD

NEW IN 2014!

The choice is yours! Set sail for the Southern Caribbean from fabulous San Juan, Puerto Rico. Journey to Alaska and explore historic Sitka. Visit the Greek Isles and Venice. Begin your exploration today! Stop by the Future Cruise Sales Desk and ask about our special onboard booking offer.

EXPRESS WALK OFF

This option allows you to take your luggage off the ship at your leisure once the ship has been cleared by the local authorities. You won't need to wait for your luggage to enter the terminal and there is no need to claim it inside the terminal building. Please note that no assistance with luggage is provided for this option.

DISNEY VACATION CLUB® GROUP PREVIEW

Want to learn more about taking magical vacations year after year? Please see a Disney Vacation Club representative on Deck 4, Midship, or call 7-2805 from your stateroom phone for more information about our interactive group presentation.



SALON TASTER SPECIAL

Choose from scalp massage, European facial, hand treatment, sunglow make-over, hair treatment, eye-collagen treatment, foot and ankle massage and neck and shoulder massage.

Three for \$99, five for \$119, and eight for \$139.

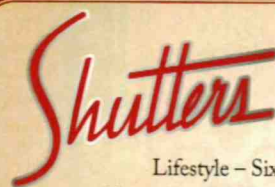
Senses Spa & Salon, Deck 11, Forward, Ext. 7-1465

PROVENANCE GEMS PRESENTS: "GEMSTONE OF THE NEW MILLENNIUM"

Astonishingly beautiful, exotic and rare - zultanite is an extraordinary color-change gemstone. Like tanzanite, zultanite is so rare that it is only found in one location worldwide, high in Turkey's Anatolian Mountains.

A rising star in fine jewelry and exclusive to Provenance Gems.

WHITECAPS
Deck 3, Forward



PROFESSIONAL PORTRAITS TONIGHT!

Lifestyle - Six Guests maximum
Night Ship Portrait - Six Guests maximum

5:15 p.m. - 6:00 p.m.
7:15 p.m. - 8:30 p.m.

Create a personal storybook of your cruise to share with family and friends.
Photobook orders close at 10:00 p.m.

Disney CRUISE LINE

PORT ADVENTURES

Welcome to Disney's Island Paradise Castaway Cay! Today is the day to relax in an inner tube, snorkel in the Caribbean blue, get up-close and personal to real life stingrays or fly high in the sky on a parasail excursion during a breathtaking aerial adventure. Visit Marge's Barges or one of the rental locations and our friendly team will assist in making any last minute bookings.

PORT ADVENTURES MEETING TIMES AND LOCATIONS

As per ticket	Castaway Ray's Stingray Adventure	Gil's Fins and Boats
As per ticket	Castaway Cay Bottom Fishing	Marge's Barges
As per ticket	Glass Bottom Boat	Marge's Barges
As per ticket	Nature Walk and Kayaking	As per ticket
As per ticket	Parasailing	Marge's Barges
9:00 a.m.	Teen Wild Side	Vibe
As per ticket	Single & Double Watercraft	Boat Beach

CASTAWAY CAY ISLAND RENTALS

Bicycles	8:30 a.m. - 4:00 p.m.	Bike Rentals
Boats	8:30 a.m. - 4:00 p.m.	Boat Beach
Snorkeling Gear	8:30 a.m. - 3:30 p.m.	Gil's Fins and Boats / Flippers and Floats
Float	8:30 a.m. - 3:30 p.m.	Gil's Fins and Boats / Flippers and Floats
Getaway Package	8:30 a.m. - 3:30 p.m.	Gil's Fins and Boats / Flippers and Floats

Reservations can be made on the island at each rental location.
Castaway Ray's walk up reservations can be made at Gil's Fins and Boats on Family Beach.

SHOPPING

GOING ONCE, GOING TWICE, YOURS!

The silent auction will close tonight at 8:00 p.m. Make sure you come place a bid on your favorite pieces. Also own a piece of the Disney Dream with an artistic rendering of a Disney character painted on a Mickey head carved from actual ship metal. Vista Gallery, Deck 4, Midship.

HAPPY ANNIVERSARY, DISNEY CRUISE LINE®!

Happy Anniversary, Disney Cruise Line®! To celebrate its 15th year, an array of Disney Cruise Line® 15th Anniversary items will be available at Sea Treasures. From Pins to graphic tees, you can find a commemorative souvenir for the whole family! Deck 3, Forward.

TAX AND DUTY FREE HIGHLIGHT

Any liquor purchases you have made throughout the voyage will be delivered to your stateroom today, packaged safely for your journey home. Experience the fragrances, jewelry, and liquors we have onboard at excellent duty free prices tonight as we will not be open in Port Canaveral. Satisfy your sweet tooth with our selection of Godiva chocolate. Whitecaps, Deck 3, Forward.

CAPTAIN'S SIGNING

Come to Whitecaps at 7:15 p.m. to have your Disney Dream merchandise signed by the Master of the Disney Dream, Captain Henry. Stunning replica ships are available in Sea Treasures, Deck 3, Forward. Beautiful Disney Cruise Line prints are available in the Vista Gallery, Deck 4, Midship.

CASTAWAY CAY TREASURES

She Sells Seashells And Everything Else and Buy the Seashore are your island memory destinations for apparel, plush, postcards, swimwear, and, well, everything else! Get your Run Disney Castaway Cay 5K tee exclusively at Buy the Seashore. Island purchases may be delivered to the ship for pickup after 6:00 p.m. in Whitecaps.

Due to port regulations, when the ship is docked, the stores will remain closed.

IMPORTANT INFORMATION

Security Notice

All Guests (including children) who wish to disembark the ship are required to present their Key to the World card at the gangway. A photo ID is also required for those Guests who are 18 years of age or older. Guests under the age of 18 are required to have a parent, guardian or other responsible adult sign an authorization form at the Guest Service Desk if they wish to go ashore unaccompanied or with any adult from another stateroom.

Cold and Flu Reminder

Please wash hands frequently and thoroughly, particularly before meals. Contact the Health Center by dialing 7-1925, should anyone in your party become ill.

Corridor Quiet Hours

As a courtesy to all our Guests, please recognize quiet hallway hours from 10:00 p.m. to 8:00 a.m.

Inclement Weather

For the safety of all Guests, outdoor events may be changed due to unforeseen weather conditions.

Environmental Message

With Disney's commitment to the environment, please refrain from throwing anything over the ship's side. Thank you!

No Reserved Seats Policy

As a courtesy to all our Guests, we kindly advise that the saving of seats is not permitted in the Walt Disney Theatre, and the saving of the sun loungers is not permitted on Deck 11, 12 and 13. Items left unattended will be returned to lost and found at Guest Services, Deck 3, Midship.

Smoking

For the comfort of our guests the following areas are designated as Smoking areas:

- Deck 13, Forward, port side, by "Currents"
- Deck 12, Aft, port side outdoor area that is accessible through the Meridian Lounge
- Deck 4, Aft, port side from 6:00 p.m. to 6:00 a.m. only (all of Deck 4 is no smoking from 6:00 a.m. to 6:00 p.m.)

Smoking is prohibited inside all guest staterooms and on stateroom verandahs. Guests found smoking in their staterooms or on their verandahs will be charged a \$250 stateroom recovery fee. Electronic cigarettes may only be used in designated smoking areas.

Walt Disney Theatre

Theatrical performances may use artificial fog, strobe lights, pyrotechnics and other special effects. For the safety of our performers and the comfort of those around you, the use of any photography, video recording devices or any electronic equipment is prohibited.

Verandah Safety

Please do not leave any combustible materials on your balcony when not present in your stateroom for safety reasons.

SATURDAY, DECEMBER 7, 2013 - DISNEY'S CASTAWAY CAY

BUENA VISTA THEATRE

PG - Open Captioning PG - Open Captioning

DOLBY 3D DOLBY 3D



8:30 a.m. Duration: 1 hr 48 mins Rating: PG	11:00 a.m. Duration: 1 hr 43 mins Rating: G	1:00 p.m. Duration: 1 hr 32 mins Rating: PG	3:00 p.m. Duration: 1 hr 48 mins Rating: PG	5:30 p.m. & 8:15 p.m. Duration: 1 hr 51 mins Rating: PG-13	10:30 p.m. Duration: 1 hr 51 mins Rating: PG-13
--	--	--	--	---	---

Character Appearances

SANTA CLAUS
Lobby Atrium - 8:30 a.m.

JAKE - THE NEVERLAND PIRATE
Deck 4, Balcony
8:45 a.m. & 9:45 a.m.

CAPTAIN HOOK
Post Office
9:00 a.m. & 10:00 a.m.

PLUTO
Mt. Rustmore - 9:15 a.m.
Scuttle's Cove - 10:15 a.m.
Lobby Atrium (V) - 5:30 p.m.

STITCH
Gangway
9:15 a.m. & 10:15 a.m.

MICKEY MOUSE
Scuttle's Cove - 9:15 a.m.
Mt. Rustmore - 10:15 a.m.
Deck 4, Balcony - 7:30 p.m.

PETER PAN
Deck 4, Balcony
9:15 a.m. & 10:15 a.m.

CAPTAIN JACK SPARROW
Marge's Barges - 9:30 a.m.
Pelican Point - 10:45 a.m.

CHIP & DALE
Post Office
9:30 a.m. & 10:30 a.m.
Deck 4, Balcony - 5:45 p.m.

DAISY DUCK
Gangway
9:30 a.m. & 10:30 a.m.

GOOFOY
Mt. Rustmore - 9:45 a.m.
Scuttle's Cove - 10:45 a.m.
Lobby Atrium (V) - 5:00 p.m.

MINNIE MOUSE
Scuttle's Cove - 9:45 a.m.
Mt. Rustmore - 10:45 a.m.
Lobby Atrium (V) - 7:30 p.m.

CHARACTER DANCE PARTY
Island Gazebo 1 - 12:15 p.m.

PRINCESS GATHERING
Lobby Atrium - 3:30 p.m.

PRINCESS ANNA OF ARENDELLE
Preludes - 4:00 p.m.

DISNEY PRINCESSES
D Lounge - 7:30 p.m.

SEA YA REAL SOON
Lobby Atrium - 10:15 p.m.

(H) Hallway - (S) Starboard Side - (P) Port Side - (V) Vestibule

For details of daily Disney character appearances, refer to the character line on your Navigator Grid, or the digital character board in the Lobby Atrium.

YOUTH ACTIVITIES THEMED EXPERIENCES

CLUBHOUSE SERIES
focuses on movement and features content which appeals to younger children.

STORYBOOK SERIES
is designed with a strong connection to the Disney classic stories.

JUMP UP! SERIES
includes large group games & movement-oriented activities.

CREATE & INVENT SERIES
will have a tactile focus allowing children to create and admire their work.

IN THE SPOTLIGHT SERIES
focuses on children's stage presence with lots of activities and enthusiasm.

SOLVE IT! SERIES
are less active, but will challenge children with problem/solutions-based activities.

OPEN HOUSE

activities for families, adults and children of all ages to enjoy together.

SHIP DIRECTORY

YOUTH ACTIVITIES

DISNEY'S OCEANEER CLUB	DECK 5, MID	4:00 PM - 12:00 MID
DISNEY'S OCEANEER LAB	DECK 5, MID	5:00 PM - 12:00 MID
EDGE	DECK 13, MID	4:00 PM - 12:00 MID
SCUTTLE'S COVE	CASTAWAY CAY	9:00 AM - 4:00 PM
VIBE	DECK 4, FWD	5:00 PM - 1:00 AM
IT'S A SMALL WORLD NURSERY	DECK 5, MID	9:00 AM - 12:00 MID

POOLS & MORE

*Children under 12 years of age must have adult supervision in all pools.

AQUADUCK	DECK 12, MID	10:00 AM - 11:00 PM
DONALD'S POOL	DECK 11, MID	10:00 AM - 6:00 PM
		8:00 PM - 10:00 PM
MICKEY'S POOL	DECK 11, MID	6:00 AM - 12:00 MID
MICKEY'S SUDE	DECK 11, MID	12:30 PM - 6:00 PM
NEMO'S REEF	DECK 11, MID	10:00 AM - 6:00 PM
QUIET COVE POOL	DECK 11, FWD	6:00 AM - 12:00 MID

RECREATION

GOLF/SPORTS SIMULATORS	DECK 13, AFT	1:00 PM - 6:00 PM
GOOFOY GOLF	DECK 13, AFT	8:00 AM - 10:00 PM
GOOFOY'S SPORTS DECK	DECK 13, AFT	8:00 AM - 6:00 PM
MARGE'S BARGES	CASTAWAY CAY	8:30 AM - 3:30 PM
MIDSHIP DETECTIVE AGENCY	DECK 5, MID	8:00 AM - 11:00 PM
PORT ADVENTURES DESK	DECK 5, MID	
SENSES FITNESS CENTER	DECK 11, FWD	6:00 AM - 10:00 PM

GENERAL INFORMATION

ARR-CADE	DECK 11, AFT	24 HOURS
BUENA VISTA THEATRE	DECK 4 & 5, MID	SHOWTIMES
DISNEY VACATION CLUB	DECK 4, MID	6:00 PM - 10:00 PM
FUTURE CRUISE SALES DESK	DECK 4, MID	8:00 AM - 10:00 AM
		3:00 PM - 10:30 PM
GUEST SERVICES	DECK 3, MID	24 HOURS
HAIRBRAIDING	DECK 11, MID	5:30 PM - 9:30 PM
MEDICAL HEALTH CENTER	DECK 1, FWD	9:30 AM - 11:00 AM
		4:30 PM - 7:00 PM

PORT & SHOPPING DESK	DECK 4, MID	
PRELUDES	DECK 3, FWD	5:45 PM - 6:30 PM
		8:00 PM - 8:45 PM
SENSES SPA AND SALON	DECK 11, FWD	8:00 AM - 10:00 PM
SHUTTERS PHOTO GALLERY	DECK 4, MID	5:00 PM - 11:00 PM
WALT DISNEY THEATRE	DECK 3 & 4, FWD	SHOWTIMES

SHOPPING

MICKEY'S MAINSAIL	DECK 3, FWD	5:30 PM - 11:30 PM
SEA TREASURES	DECK 3, FWD	5:30 PM - 11:30 PM
QUACKS	DECK 11, MID	
VISTA GALLERY	DECK 4, MID	6:00 PM - 11:00 PM
WHITECAPS	DECK 3, FWD	5:30 PM - 11:30 PM
WHOZITS & WHATZITS	DECK 11, MID	6:45 PM - 10:00 PM

DUE TO PORT REGULATIONS, WHEN THE SHIP IS DOCKED, THE STORES MUST REMAIN CLOSED.

PRINCESS GATHERING

Don't miss your chance to see this Royal gathering today in the Lobby Atrium.

3:30 p.m.



DINNER MENU	Animator's Palate: Pacific Rim Cuisine	DRINK OF THE DAY	Bahama Mama (Alcoholic)	WEATHER FORECAST	Saturday: Chance of Rain High: 75°F/24°C
	Enchanted Garden: Continental Market Cuisine		Coco Bait (Non Alcoholic)		Sunday: Sunny High: 78°F/26°C
	Royal Palace: French Dinner				
Dining Times: 5:45 p.m. & 8:15 p.m.					

Evening Attire: Optional Dress Up

DINING & LOUNGES

BREAKFAST

CABANAS CONTINENTAL	DECK 11, AFT	7:00 AM - 7:30 AM
CABANAS	DECK 11, AFT	7:30 AM - 10:45 AM
ENCHANTED GARDEN	DECK 2, MID	8:00 AM - 10:30 AM
ROYAL PALACE	DECK 3, MID	8:00 AM - 9:30 AM

LUNCH

CABANAS	DECK 11, AFT	12:00 PM - 1:30 PM
COOKIES	CASTAWAY CAY	11:30 AM - 2:00 PM
COOKIES TOO	CASTAWAY CAY	11:30 AM - 2:00 PM
FILLMORE'S FAVORITES	DECK 11, MID	11:00 AM - 6:00 PM
LUIGI'S PIZZA	DECK 11, MID	11:00 AM - 6:00 PM
TOW MATER'S GRILL	DECK 11, MID	11:00 AM - 6:00 PM

DINNER

ANIMATOR'S PALATE	DECK 3, AFT	5:45 PM & 8:15 PM
ENCHANTED GARDEN	DECK 2, MID	5:45 PM & 8:15 PM
ROYAL PALACE	DECK 3, MID	5:45 PM & 8:15 PM
PALO & REMY (18+)	DECK 12, AFT	6:00 PM - 9:00 PM

(RESERVATIONS REQUIRED & COVER CHARGE APPLICABLE, DIAL #7-9734)

TOW MATER'S GRILL	DECK 11, MID	6:00 P.M. - 11:00 PM
-------------------	--------------	----------------------

LATE NIGHT SNACKS

LUIGI'S PIZZARIA	DECK 11, MID	9:30 PM - 12:00 MID
------------------	--------------	---------------------

ADDED FEATURES

BEVERAGE STATION	DECK 11, MID	24 HOURS
EYE SCREAM	DECK 11, MID	11:00 AM - 12:00 MID
ROOM SERVICE	DIAL 0	CLOSES AT 1:30 AM

ENTERTAINMENT - LOUNGES - BARS

Adults must be 21 and older to consume alcoholic beverages.

687 PUB (18+ AFTER 9:00 PM)	DECK 4, AFT	12:00 PM - 12:00 MID
BON VOYAGE	DECK 3, MID	3:00 PM - 11:00 PM
COVE BAR (18+)	DECK 11, FWD	11:00 AM - 11:00 PM
COVE CAFE (18+)	DECK 11, FWD	7:00 AM - 12:00 MID
CURRENTS (18+)	DECK 13, FWD	2:00 PM - 12:00 MID
D LOUNGE	DECK 4, MID	SHOWTIMES
DISTRICT LOUNGE (18+ AFTER 9:00 PM)	DECK 4, AFT	4:30 PM - 12:00 MID
EVOLUTION (18+)	DECK 4, AFT	9:30 PM - 2:00 AM
FROZONE TREATS	DECK 11, MID	1:00 PM - 11:00 PM
MERIDIAN (18+)	DECK 12, AFT	5:00 PM - 12:00 MID
OUTLOOK	DECK 14, MID	
PINK (18+)	DECK 4, AFT	5:00 PM - 12:00 MID
SKYLINE (18+)	DECK 4, AFT	5:00 PM - 12:00 MID
VISTA CAFE	DECK 4, MID	7:30 AM - 11:00 PM
WAVES	DECK 12, AFT	2:00 PM - 7:00 PM

CASTAWAY CAY BARS

CONCHED OUT BAR	CASTAWAY CAY	9:00 AM - 4:00 PM
CASTAWAY AIR BAR	CASTAWAY CAY	9:00 AM - 3:30 PM
HEADS UP BAR	CASTAWAY CAY	9:00 AM - 3:30 PM
SAND BAR	CASTAWAY CAY	9:00 AM - 4:00 PM

Consumers who order raw or partially cooked, ready-to-eat food of animal origin, are hereby informed that the food is not sufficiently cooked to ensure its safety.

IMPORTANT NUMBERS

Fire/Security: 7-3001
Medical EMERGENCY: 7-3000
Health Center: 7-1923

All Ashore: Approx. 8:30 a.m.
All Aboard: 5:00 p.m.

Morning	8:30	8:45	9:00	9:15	9:30	9:45	10:00	10:15	10:30	10:45	11:00	11:15	11:30	11:45	12:00	12:15	12:30	12:45	1:00	1:15	1:30				
FUNNEL VISION	Peter Pan (G) Funnel Vision					Mary Poppins (G) Funnel Vision					Pixar Short Films (G) Funnel Vision														
BUENA VISTA THEATRE	Frozen (PG) Duration: 1 Hour 48 Minutes					Monsters University (G) Duration: 1 Hour 43 Minutes					Planes (PG) Duration: 1 Hour 32 Minutes														
CHARACTER	Santa Claus Lobby Atrium		Capt. Hook Post Office		Stitch Gangway		Daisy Gangway		Minnie Scuttles Cove		Mickey Rustmore		Minnie Rustmore												
	Jake Dk 4, Balcony				Pluto Rustmore		Jake Dk 4, Balcony		Capt. Hook Post Office		Pluto Scuttles Cove		Chip & Dale Post Office		Jack Sparrow Pelican Point										
FUN FOR ALL AGES	Meet in Evolution at 8:15 a.m. (Departs at 8:30 a.m.)				Island Power Walk Meet at the Post Office				DJ Marius Spins on the Island Island Gazebo 1				Crab Races Island Gazebo 1		Character Dance Party Island Gazebo 1		Crab Races Island Gazebo 2		Family Whale Dig Monstro Point						
ADULTS	Friends of Bill W. Outlook					Yoga on the Beach Serenity Bay					Basketball Free Throw In Da Shade					Live Music with Matt Bruno Island Gazebo 1									
	Wake Up & Stretch Class Senses Fitness Center					Secrets To A Flatter Stomach Senses Fitness Center					Basketball Free Throw In Da Shade					Club 18*21 - Basketball Free Throw In Da Shade									
VIBE 14-17 YEARS OLD	The Wild Side - Meet at Vibe					Hangin' at Teen Hideout					Lunch at Cookies Too														
EDGE 11-14 YEARS OLD						Sand Soccer					Hangin' at In Da Shade					Lunch at Cookies Too					Pelican Plunge				
SCUTTLE'S COVE	Water Relays					The Dig at Monstro's Point					Treasure Hunt					Lunch at Pop's Props					Sebastian's Musical Sea Search				
OCEANEER LAB 3-12 YEARS OLD	Youth Activities Open House																								
Afternoon	1:45	2:00	2:15	2:30	2:45	3:00	3:15	3:30	3:45	4:00	4:15	4:30	4:45	5:00	5:15	5:30	5:45	6:00	6:15	6:30	6:45				
FUNNEL VISION	Aladdin (G) Funnel Vision					The Jungle Book (G) Funnel Vision					Fantasia Funnel Vision														
BUENA VISTA THEATRE						Frozen (PG) Duration: 1 Hour 48 Minutes					Thor: The Dark World (PG-13) Duration: 1 Hour 51 Minutes														
CHARACTER						Princess Gathering Lobby Atrium					Princess Anna of Arendelle Preludes					Pluto Lobby Atrium (V)									
						Capt. Hook Gangway					Goofy Lobby Atrium (V)					Chip & Dale Dk 4, Balcony									
FUN FOR ALL AGES	Live Music with Matt Bruno Island Gazebo 1				 D Lounge				Bingo Pre Sales D Lounge		\$5,000 Final Mega Jackpot Bingo D Lounge		Live Music with Tom Scott District Lounge		Live Music with The Dreamers Lobby Atrium		 Walt Disney Theatre								
											Disney Vacation Club Group Preview Evolution														
ADULTS						Making of the Dream Evolution					Martini Tasting (21+) Meridian (Pre Book, Nom. Fee)					Club 18*21 - Mini Golf Goofy's Sports Deck									
						Art of The Theme Show Tour Meet at Meridian					Pathway to Pilates Senses Fitness Center					Live Piano with the Tom Scott District Lounge									
VIBE 14-17 YEARS OLD	Hangin' at Teen Hideout					Youth Activities Open House					Sports Deck Fun					Animation		That's Hilarious							
EDGE 11-14 YEARS OLD	Hangin' at In Da Shade					Inside Teen Hideout Until 4:00 p.m. Youth Activities Open House					Open for Tweens					Flubber		Sports Deck Fun							
SCUTTLE'S COVE	Caribbean Beach Party					Capture the Flag					Scuttle's Cove Closes at 4:00 p.m.														
OCEANEER LAB 3-12 YEARS OLD	Youth Activities Open House										Happy Holidays Cards					Dinner		Piston Cup Challenge							
											Anyone Can Cook														
OCEANEER CLUB 3-12 YEARS OLD											Open For Secured Activities		Magic PlayFloor		Tinker Bell's Talent Show		Dinner		Holiday Crafts						
Evening	7:00	7:15	7:30	7:45	8:00	8:15	8:30	8:45	9:00	9:15	9:30	9:45	10:00	10:15	10:30	10:45	11:00	11:15	11:30	11:45	12:00				
FUNNEL VISION	Cinderella (G) Funnel Vision					The Princess and the Frog (G) Funnel Vision					Disney's A Christmas Carol (G) Funnel Vision														
BUENA VISTA THEATRE						Thor: The Dark World (PG-13) Duration: 1 Hour 51 Minutes					Thor: The Dark World (PG-13) Duration: 1 Hour 51 Minutes														
CHARACTER						Princesses D Lounge					 Lobby Atrium														
						Minnie Mouse Lobby Atrium (V)																			
FUN FOR ALL AGES	Captain's Signing Whitcaps		Officer Pin Trading Preludes		 Walt Disney Theatre		Family Dance Party Evolution		Disney Trivia D Lounge		Dream Quest D Lounge		Live Music with The Dreamers Lobby Atrium		 D Lounge		Live Piano with the Tom Scott Lobby Atrium								
ADULTS	NCAA - Football: South Florida vs. Rutgers 687 Pub (Subject to satellite availability)					DJ Marius Evolution					Dream Quest Evolution		80's Music Challenge Evolution		Pulse feat. Guest DJ Six 4 Evolution										
	Live Music with Matt Bruno Quiet Cove					Live Piano with the Tom Scott District Lounge					Metrotones Live District Lounge		Club 18*21 - Farewell Evolution		Metrotones LIVE District Lounge		Live Music with the Metrotones District Lounge								
VIBE 14-17 YEARS OLD	Dream Factor					Pump It Up					Bring It!					Dance Party									
EDGE 11-14 YEARS OLD	Marshmallow Olympics					Ghost Voyagers					Final Farewell Slideshow					Farewell Dance Party									
OCEANEER LAB 3-12 YEARS OLD	Piston Cup Challenge		Pirates of the Caribbean: Tides of Fortune		Stitch's Final Farewell		Get the Hook		Anyone Can Cook		Super Sloppy Science		Magic PlayFloor												
OCEANEER CLUB 3-12 YEARS OLD	Camp Rocking Out!			Magic PlayFloor			Little Einstein's Adventure			Animation Antics			Movie Time												

Symbol for activities that will be repeated during the cruise



FOLD

Fold along the dotted lines and take me with you so you don't miss any of the fun!

FOLD

IN THE SPOTLIGHT SERIES
SOLVE IT! SERIES
JUMP UP! SERIES
CREATE & INSPIRE SERIES
OPEN HOUSE
CLUBHOUSE SERIES
STORYBOOK SERIES