

PERSONAL NAVIGATOR

FRIDAY, NOVEMBER 1, 2013

Sunrise: 7:00 a.m. Sunset: 6:23 p.m.
Evening Attire: Cruise Casual

Friday: Cloudy High: 75°F/24°C

DAY AT SEA



Featuring

The Comedy and Magic of
David Williamson



and the
Disney Wonder Performers

WALT DISNEY THEATRE

Deck 4, Forward

6:15 p.m. & 8:30 p.m.



As a courtesy to all Guests, we kindly advise that the saving of seats is not permitted in the Walt Disney Theatre.



Assistance available at the entrance to the Walt Disney Theatre 30 minutes prior to show time.

Did You Know?

- The 1,967 miles of cable on our ship would be enough to run an extension cord between Austin and Detroit.
- Our ship is 964 feet long, only 22 feet less than the height of the Eiffel Tower.
- The ship can make 500,000 gallons of fresh water from sea water everyday while cruising.

Tonnage: 83,308 gross, 53,899 net

Length Overall: 294m / 964ft

(height of Eiffel Tower is 986ft)

Maximum Speed: 26 knots (30 miles per hour)

Important Dates

Keel Laid: May 15, 1997

Launch Date: July 14, 1999

Inaugural Cruise: August 15, 1999

Debark Talk Broadcast

Important information regarding disembarkation procedures for Galveston and your journey home will be covered in this debarkation briefing. The broadcast will be shown continuously on channel 223 of your stateroom television for your convenience. Thank you in advance for completing your comment card.



'TIL WE MEET AGAIN

The world-famous Disney Characters and some of your new friends from the Disney Wonder stage shows bid you a charming farewell.

Lobby Atrium,
Deck 3, Midship,
10:00 p.m.

Don't Miss:

Jack-Jack's Incredible Diaper Dash

Lobby Atrium, Deck 3, Midship - 10:00 a.m.

Calling all baby cruisers! The Disney Wonder's babies take to the mat to see who's the fastest crawler of the seven seas! Register your baby 15 minutes prior to the big race.

Disney's Art of Entertaining: Dazzling Dessert (18+)

Studio Sea, Deck 4, Midship - 10:15 a.m.

Learn to create mouth-watering sweets like a professional pastry chef with easy to follow decadent recipes. Followed by Napkin Folding at 11:00 a.m.

Captain's Signing

Treasure Ketch, Deck 4, Forward - 12:15 p.m.

Meet the Master of the Disney Wonder and have your cruise memories signed.

Family Variety: David Williamson

Walt Disney Theatre, Deck 4, Forward - 2:00 p.m.

Featuring the Comedy & Magic of Magic Dave, as he entertains the entire family in this fun-filled show.



Turn your magical vacation memories into an impressive keepsake with a personalized, one-of-a-kind PhotoBook. Fill every page with wonderful memories of your family during this cruise. Visit Shutters today, as supplies are limited and orders will close at 7:00 p.m. on the last day of the cruise.

**Offer valid per stateroom only. Terms and conditions apply. The PhotoBook is only available for purchase during this cruise.*

DINNER MENU

Animator's Palate: 'Til We Meet Again
Parrot Cay: 'Til We Meet Again
Triton's: 'Til We Meet Again

DRINK OF THE DAY

High Tide (Alcoholic)
Banana Lime Ginger (Non Alcoholic)

IMPORTANT NUMBERS

Fire/Security: 7-3001
Medical Emergency: 7-3000
Health Center: 7-1923

FUN FOR ALL AGES HIGHLIGHTS



WAKE UP WITH DISNEY JUNIOR

Promenade Lounge, Deck 3, Aft - 9:00 a.m.

What happens when you experience fun with your favorite Disney Junior shows? You get an exciting dance party designed especially for preschoolers ages seven and under.



DISNEY CHANNEL ON DECK

Goofy's Pool Stage, Deck 9, Midship - 12:30 p.m.

Don't change that channel! It's time for a Disney Channel afternoon poolside! Your cruise staff will host an exciting day of games and contests in between your favorite Disney Channel shows! So sit back, relax, and enjoy the sun!

GENERATION GAME

Wavebands, Deck 3, Forward - 1:00 p.m.

Join your Cruise Staff team for our kids vs. adults game show featuring a series of challenges and tasks. Who will be the champion in our battle of the generations?

ICE CARVING

Goofy's Pool, Deck 9, Midship - 1:30 p.m.

Amazed by those ice sculptures you find around the ship? See how our Master Carver chisels up a work of art in record time.



FRIENDSHIP ROCKS

Walt Disney Theatre, Deck 4, Forward - 5:00 p.m.

Come and celebrate with all the children from the Oceaneer Club and Oceaneer Lab in the Jammin' performance of Friendship Rocks! You won't want to miss any of the fun.

FAMILY TALENT SHOW

Studio Sea, Deck 4, Midship - 7:30 p.m.

Your fellow Guests have rehearsed and are ready to show off their talents. Rehearsal time for those already registered for our show will take place at 4:45 p.m. in Wavebands.

MAGIC WORKSHOP (6+)

Wavebands, Deck 3, Forward - 7:30 p.m.

Magic Dave teaches you the basics of magic in this fun family event.



ADULT ACTIVITY HIGHLIGHTS

VISTA SPA FITNESS CLASSES & SEMINARS

Sunrise Stretch - Vista Spa Fitness Center - 7:00 a.m.

Body Sculpt Boot Camp (Nominal Fee) - Vista Spa Fitness Center - 7:30 a.m.

AB Attack - Vista Spa Fitness Center - 8:30 a.m.

Free Footprint Analysis - Vista Spa Fitness Center - 9:30 a.m.

Secrets To A Flatter Stomach - Outlook Cafe - 11:00 a.m.

Tour De Cycle - Vista Spa Fitness Center - 5:00 p.m.



TASTING CLASSES

Chocolate and Beverage Pairing (21+) - Cadillac Lounge - 12:00 p.m.

Beer Tasting (21+) - Cadillac Lounge - 4:00 p.m.

Whiskey Tasting (21+) - Outlook Cafe - 10:30 p.m.

Please make reservations for tastings at Guest Services for a nominal fee.

Tasting Seminars are only for Guests 21 and Older.

CLUB
18*21

LUNCH
Parrot Cay, Deck 3, Aft - 12:15 p.m.

FAREWELL
Diversions, Deck 3, Forward - 10:00 p.m.

ART OF THE THEME SHOW TOUR

Palo, Deck 10, Aft - 9:00 a.m. & 3:00 p.m.

Join us on a guided ship tour and discover the key ingredients that make the Disney Wonder.

TRIVIA TIME

80's Music Trivia - Diversions, Deck 3, Forward - 11:00 a.m.

Movie Quotes Trivia - Diversions, Deck 3, Forward - 1:00 p.m.

Join your Cruise Staff as we test your knowledge at these two fun trivia events.

GAME SHOW: THE FEUD

Diversions, Deck 3, Forward - 7:30 p.m.

"Survey Says" you'll have a fantastic time with our version of a classic game. Who will reign champion of the feud this cruise?

\$10,000 MEGA JACKPOT BINGO

Wavebands, Deck 3, Forward

Card Sales - 10:45 a.m.

Game Starts - 11:00 a.m.

It's Big, it's Massive, it's Supersized! It's \$10,000 MEGA Jackpot Bingo!

Take home \$10,000 if you can cover your card in 46 numbers or less.

If not, we carry on to play for the biggest cash prize of the session.

FINAL JACKPOT BINGO

Wavebands, Deck 3, Forward

Card Sales - 3:00 p.m.

Game Starts - 3:30 p.m.

The snowball jackpot **MUST BE WON** at this final session! Beat the line and get your cards early. Who will be the lucky winner? It could be you!

YOUTH ACTIVITIES HIGHLIGHTS

DINE & PLAY

A convenience for families dining at 8:15 p.m., our Youth Activities Counselors will be available at 9:15 p.m. at the entrance of Triton's, Parrot Cay and Animator's Palate dining rooms to bring registered children to join the fun in the Oceaneer Club and Oceaneer Lab.



Deck 5, Aft (7-18500) 9:00 a.m. - 11:00 p.m.

Infants and Toddlers can enjoy toys and activities at Flounder's Reef Nursery. Reservations are first come, first served so please stop by!



Deck 5, Midship (7-1440)
(3 - 12 years old) 9:00 a.m. - 12:00 mid

TOY STORY BOOT CAMP

2:00 p.m.

Join Corporal Green in our own version of boot camp as we learn how to have fun - The Toy Story way!

FRIENDSHIP ROCKS

5:00 p.m.

Come and celebrate with all the children from the Oceaneer Club and Lab in the jammin' performance of Friendship Rocks! You won't want to miss any of the fun.



Deck 5, Midship (7-1445)
(3 - 12 years old) 9:00 a.m. - 12:00 mid

SHAKE IT UP!

9:30 a.m.

You've seen the show; now come learn the move to one of the most popular dances of the summer!

LAVA FLOW

7:30 p.m.

Build your own volcano and watch it erupt as you learn about the physics of volcanos.



Deck 2, Midship (7-5810)
(11 - 14 years old) 10:00 a.m. - 12:00 mid

BRAINS AND BRAWNS

3:00 p.m.

You will compete against each other to solve clues, take part in physical challenges, and reach the finish first.

HOW WELL DO YOU KNOW YOUR COUNSELOR?

10:00 p.m.

Do you think you know all there is to know about your counselors? Come test out your knowledge with all of your friends!



Deck 11, Midship (7-18517)
(14 - 17 years old) 11:00 a.m. - 1:00 a.m.

SHIP FACTOR

2:30 p.m.

Ready for one of the toughest challenge competitions onboard?

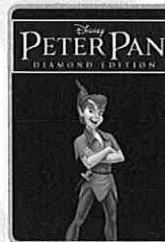
GAMES & MORE

8:00 p.m.

All games are welcome during this time-teens will play together with other counselors.

BUENA VISTA THEATRE

Today's Movies



8:30 a.m.
Duration:
1 hr 17 mins
Rating: G

DOLBY 3D



10:30 a.m.
Duration:
1 hr 40 mins
Rating: G

DOLBY 3D



12:30 p.m.
Duration:
1 hr 53 mins
Rating: PG



3:00 p.m.
Duration:
1 hr 32 mins
Rating: PG

DOLBY 3D



5:30 p.m. & 8:00 p.m.
Duration:
1 hr 32 mins
Rating: PG



10:30 p.m.
Duration:
2 hrs 29 mins
Rating: PG-13



FAMILY VARIETY ACT

Featuring the
Comedy & Magic
of Magic Dave,
as he entertains the
entire family in this
fun-filled show.

Walt Disney Theatre,
Deck 4, Forward,
2:00 p.m.



ADULT VARIETY ACT

Featuring the
Physical Comedy
of Paul DiMuzio,
as he entertains you in this
adult exclusive show.

Wavebands (18+),
Deck 3, Forward,
10:30 p.m.

YOUTH ACTIVITIES OPEN HOUSE

Open House is an opportunity for all to come and participate in a variety of exciting activities and free time in the Oceaneer Club, Oceaneer Lab, Flounder's Reef Nursery, Vibe and Edge throughout the cruise. During these times secured programming will still be offered in the other venue for those looking to check their children into care.

Edge: 10:00 a.m. - 12:00 p.m. Disney's Oceaneer Club: 9:00 a.m. - 10:30 a.m.
Vibe: 5:30 p.m. - 7:00 p.m. Edge: 6:00 p.m. - 8:00 p.m.

MORE TO ENJOY WHILE ONBOARD

DISNEY VACATION CLUB® GROUP PREVIEW

Want to learn more about taking magical vacations year after year? Please see a Disney Vacation Club representative on Deck 4, Midship, or call 7-2805 from your stateroom phone for more information about our interactive group presentation.



VISIT THE FUTURE CRUISE SALES DESK EARLY TODAY

Avoid the evening rush and visit the Future Cruise Sales Desk early for your last chance to save 10% on your next cruise, receive up to a \$200 onboard credit, and pay a reduced deposit. Future Cruise Sales Desk, Deck 4, Midship.



SHOPPING EVENTS

Buyers Guarantee Raffle. Bought something ashore? Stop by Lauren's desk to activate your 60 Day Buyers Guarantee form and place it in her drop box for the last raffle of the cruise.



VISTA SPA

Deck 9, Forward - Phone: 7-1465

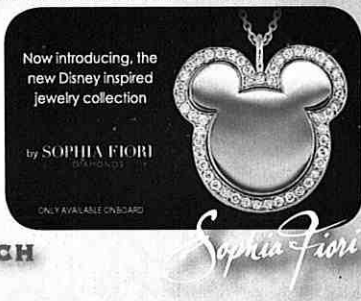
BLISS SPECIAL

Due to popular demand: hotstone back massage, franjipani Scalp massage, mini booster facial, collagen eye treatment, pressure point foot massage

Today Only: 75 minutes for only \$129

TODAY'S SHOPPING SPECIAL

Stop by Treasure Ketch to try on the world's most memorable white diamond pieces and commemorate your cruise.



TREASURE KETCH

Deck 4, Forward



GET THE PICTURE!

Remember your Disney Cruise forever when you purchase all your photos on a CD. Stop by Shutters on Deck 4, Aft and ask your friendly shutters staff on how you can Get The Picture!

**Please note that photos are available for viewing on our interactive photo kiosks approximately five hours after being taken and are only available for purchase during this cruise.*

QUARTER MASTERS ARCADE

Can you unlock the Grand MASTER KEY? Challenge yourself and discover the rewards that await you including cool Headphones, Underwater Cameras and Disney Princesses Prize Pack, come over to Deck 9, Midship, Quarter Masters Arcade and you could win a treasure.

WIRELESS INTERNET: KEEPING YOU CONNECTED AT SEA

\$0.75 per minute or save money by buying blocks of time. \$55 for 100 minutes, \$100 for 250 minutes and \$150 for 500 minutes. Wireless information sheets are available at Guest Services, Deck 3, Midship, Internet Cafe, Deck 3, Aft, Cove Cafe, Deck 9, Midship and Outlook Cafe, Deck 10, Midship.

Due to the technology involved and satellite connectivity, the onboard internet service will be noticeably slower than you may be accustomed to and might at times be interrupted or unavailable.

EXPRESS CHECK OUT

If you have a credit card on file, you qualify for express check out. No need to visit Guest Services to settle your account.

EXPRESS WALK OFF

Carry all your luggage and be the first to get off the ship once the ship has been cleared in Galveston.

SHOPPING

ART GALLERY - SILENT ART AUCTION

Place your bid on Inkings, Line Art and other pieces. Auction starts at 1:00 p.m. - 4:00 p.m. Visit your Gallery Host between 1:00 p.m. - 4:00 p.m. and 7:00 p.m. - 9:00 p.m. in the Art Gallery, Deck 4, Midship for more information.

SOPHIA FIORI LAST OPPORTUNITY BLOW OUT SALE!

This is your last chance to get your hands on our fantastic collection of Sophia Fiori Couture diamond jewelry. Drop in to the Treasure Ketch and save up to 50% off your purchase and free sizing on any Sophia Fiori ring! These exquisite diamonds are not available back home so take advantage of these stunning deals and do not miss out!

OFFICER PIN TRADING

Come and trade pins with the Officers of the Disney Wonder. Lobby Atrium, Deck 3, Midship, between 7:15 p.m. and 8:00 p.m.

MYSTERY PINS

Purchase a Mystery Pin for just \$2.95 with any merchandise purchase of \$30.00 or more. Available in Mickey's Mates and Treasure Ketch. While supplies last.

'TIL WE MEET AGAIN!

Although our time together is coming to a close, your memories will always live on! Visit Mickey's Mates for all your last minute Disney Cruise Line items.

CAPTAINS SIGNING

Have your cruise mementos signed by the Master of the Disney Wonder! Treasure Ketch, Deck 4, Forward at 12:15 p.m..

SOPHIA FIORI GUESS THE CARAT WEIGHT WITH CAROL

Come in to Guess the Carat Weight on a Sophia Fiori Diamond between 9:30 a.m. and 9:00 p.m. Whoever guesses the closest, wins a 5 carat Loose Midnight Sapphire and a pair of Sapphire Stud Earrings. The winner will be revealed at 9:45 p.m. in Treasure Ketch, Deck 4, Forward. Winner must be present.

IMPORTANT INFORMATION

Security Notice

All Guests (including Children) who wish to disembark or embark the ship are required to present their Key to the World card at the gangway. A photo ID is also required for those Guests who are 18 years of age or older. Guests under the age of 18 are required to have a Parent, Guardian or other responsible adult sign an authorization form at the time it is given out if they wish to go ashore unaccompanied. Authorization forms are available at the gangways and Guest Services.

Cold and Flu Reminder

Please wash hands frequently and thoroughly, particularly before meals. Contact the Health Center by dialing 7-1923, should anyone in your party become ill.

Inclement Weather

For the safety of all Guests, outdoor events may be changed due to unforeseen weather conditions.

Corridor Quiet Hours

As a courtesy to all our Guests, please recognize quiet hallway hours from 10:00 p.m. til 8:00 a.m.

Environmental Message

With Disney's commitment to the Environment please refrain from throwing anything over the Ship's side. Thank you.

No Reserved Seats Policy

As a courtesy to all Guests we kindly advise that the saving of seats is not permitted in the Walt Disney Theatre, and the saving of the sun loungers is not permitted on Deck 9 and 10. Items left unattended will be returned to lost and found at Guest Services, Deck 3, Midship.

Smoking

For the comfort of our Guests the following open deck areas are designated as Smoking areas: Deck 4, Starboard side from 6:00 p.m. to 6:00 a.m. ONLY, Deck 9 Forward Starboard side at Quiet Cove and Deck 10 Starboard side. Smoking is prohibited in all Guest staterooms. Guests found smoking in their staterooms will be charged a \$250 stateroom recovery fee. Electronic cigarettes may only be used in designated smoking areas.

Sunscreen Advisory

Don't forget to apply sunscreen and insect repellent when going ashore.

Walt Disney Theatre

Theatrical performances may use artificial fog, strobe lights, pyrotechnics and other special effects. For the safety of our performers and the comfort of those around you, the use of any photography or video recording device or any electronic equipment is prohibited.

Verandah Safety

Please do not leave any combustible materials on your balcony when not present in your stateroom for safety reasons.

Morning	8:30	8:45	9:00	9:15	9:30	9:45	10:00	10:15	10:30	10:45	11:00	11:15	11:30	11:45	12:00	12:15	12:30	12:45	1:00	1:15	1:30
FUNNEL VISION	Lilo & Stitch (PG) Funnel Vision						The Little Mermaid (G) Funnel Vision						Disney Channel on Deck Funnel Vision								
BUENA VISTA THEATRE	Peter Pan (G) Duration: 1 Hour 17 Minutes						Finding Nemo (G) DOLBY 3D Duration: 1 Hour 40 Minutes						Wreck-It Ralph (PG) DOLBY 3D Duration: 1 Hour 53 Minutes								
CHARACTER	Cinderella Preludes		Belle Preludes		Snow White Preludes		Ariel Preludes		Character Dance Party Lobby Atrium												
Character Breakfast Please check your dining ticket for your allocated Character Breakfast times this cruise.																					

FUN FOR ALL AGES	Toddler Time Flounder's Reef Nursery		Disney Junior Promenade Lounge		The Wheel Promenade Lounge		Bingo Pre Sales		\$10,000 Mega Jackpot BINGO Wavebands		Animation - Goofy Animator's Palate		Captain's Signing Treasure Ketch		Generation Game Wavebands		Ice Carving Goofy's Pool Stage	
	Royal Crafts Disney's Oceaneer Club		The Royal Ball Disney's Oceaneer Club		Ping Pong Game Wide World of Sports Deck		Napkin Folding Studio Sea		Disney Channel on Deck Goofy's Pool Stage		Cruisin' for Trivia Promenade Lounge							
ADULTS	Friends of Bill W. Outlook Cafe		Art of The Theme Show Tour Palo				Disney's Art of Entertaining Studio Sea - Dazzling Dessert		80's Music Trivia Diversions		Club 18*21 - Lunch Parrot Cay		Movie Quotes Trivia Diversions					
VIBE 14-17 YEARS OLD	AB Attack Vista Spa Fitness Center						Walk A Mile Preludes		Footprint Analysis Vista Spa Fitness Center		Chocolate Pairing Cadillac Lounge (Nom. Fee, 21+)		Disney Vacation Club Group Preview Studio Sea					
EDGE 11-14 YEARS OLD	Youth Activities Open House						Teen Choice						Gotcha Registration		GOTCHA			
OCEANEER LAB 3-12 YEARS OLD	Shake It Up!						Piston Cup Challenge						Lunch					
OCEANEER CLUB 3-12 YEARS OLD	Youth Activities Open House Royal Crafts 9:15 a.m. - 9:45 a.m. The Royal Ball 9:45 a.m. - 10:30 a.m.						Rescue Rangers						Lunch		Heffalump Hunting			

Afternoon	1:45	2:00	2:15	2:30	2:45	3:00	3:15	3:30	3:45	4:00	4:15	4:30	4:45	5:00	5:15	5:30	5:45	6:00	6:15	6:30	6:45
FUNNEL VISION	Live Music with Andrew Victoria Funnel Vision						Toy Story 3 (G) Funnel Vision						Virtual Tours Funnel Vision		Up (PG) Funnel Vision						
BUENA VISTA THEATRE	Planes (PG) Duration: 1 Hour 32 Minutes						Planes (PG) DOLBY 3D Duration: 1 Hour 32 Minutes														
CHARACTER	Peter Pan Lobby Atrium		Chip & Dale Lobby Atrium		Donald, Daisy Lobby Atrium		Pluto Lobby Atrium														
FUN FOR ALL AGES	Magic Dave Walt Disney Theatre		Bingo Pre Sales		Final Jackpot BINGO Wavebands		Chip It GOLD Lobby Atrium (12+)		Talent Show Rehearsals Wavebands		Live Music with Starlite Duo Promenade Lounge		Remember The Magic! Walt Disney Theatre								
	Toddler Time Mickey's Splash Zone		Crafts: Card Making Promenade Lounge		Disney Movie Trivia Promenade Lounge		Basketball Free Throw Wide World Of Sports Deck		Jewish Sabbath Cadillac Lounge - Guest Led		Wii Challenge Diversions		Dinner								
ADULTS	Animation - Goofy Animator's Palate		Art of The Theme Show Tour Palo				Live Music with Carrie Stone Quiet Cove Pool		Beer Tasting Cadillac Lounge (Nom. Fee, 21+)		Tour De Cycle Vista Spa Fitness Center										
VIBE 14-17 YEARS OLD	GOTCHA		Ship Factor		Scavenger Hunt		Youth Activities Open House														
EDGE 11-14 YEARS OLD	Dodgeball		Brains and Brawns		Craft Corner		Youth Activities Open House														
OCEANEER LAB 3-12 YEARS OLD	Animation Antics		GAGA Ball		Friendship Rocks Prep		Friendship Rocks		Dinner												
OCEANEER CLUB 3-12 YEARS OLD	Toy Story Boot Camp		Picture This		Where's Tink		Friendship Rocks Prep		Friendship Rocks		Dinner										

Evening	7:00	7:15	7:30	7:45	8:00	8:15	8:30	8:45	9:00	9:15	9:30	9:45	10:00	10:15	10:30	10:45	11:00	11:15	11:30	11:45	12:00
FUNNEL VISION	NCAA: USC vs Oregon St. Funnel Vision						The Lone Ranger (PG-13) Duration: 2 Hours 29 Minutes														
BUENA VISTA THEATRE	Planes (PG) DOLBY 3D Duration: 1 Hour 32 Minutes						The Lone Ranger (PG-13) Duration: 2 Hours 29 Minutes														
CHARACTER	Mickey Lobby Atrium		Till We Meet Again Lobby Atrium						Farewell Karaoke Studio Sea												
FUN FOR ALL AGES	Officer Pin Trading Lobby Atrium		Magic Workshop Wavebands		Remember The Magic! Walt Disney Theatre		Live Music with Makeena Brick Lobby Atrium		Country and Blues with Starlite Duo Promenade Lounge		Live Music with Starlite Duo Promenade Lounge		Final Farewell Slideshow								
	Family Talent Show Studio Sea		Game Show: The Feud Diversions		Music & Martinis with Tim Moss Cadillac Lounge		Live Music with Andrew Victoria Wavebands		Adult Variety: Paul DiMuzio Wavebands		Guest DJ Day-na Wavebands		Late Night Piano Cadillac Lounge								
ADULTS	Sports Deck Fun		Games & More		Pump It Up		Final Farewell Slideshow		Final Farewell												
VIBE 14-17 YEARS OLD	Youth Activities Open House						Make Up What You Missed		How Well Do You Know Your Counselor?		Final Farewell Slideshow		Final Farewell								
EDGE 11-14 YEARS OLD	Youth Activities Open House						Make Up What You Missed		How Well Do You Know Your Counselor?		Final Farewell Slideshow		Final Farewell								
OCEANEER LAB 3-12 YEARS OLD	Lava Flow						Disney Scene It		Marshmallow Olympics												
OCEANEER CLUB 3-12 YEARS OLD	King Triton's Royal Court						Final Farewell														

Symbol for activities that will be repeated during the cruise

FOLD

Fold along the dotted lines and take me with you so you don't miss any of the fun!

FOLD

IN THE SPOTLIGHT SERIES

SOLVE IT! SERIES

UP! SERIES

CREATE & INVENT SERIES

OPEN HOUSE

CLUBHOUSE SERIES

STORYBOOK SERIES

FRIDAY, NOVEMBER 1, 2013 - DAY AT SEA

BUENA VISTA THEATRE



8:30 a.m. Duration: 1 hr 17 mins Rating: G	10:30 a.m. Duration: 1 hr 40 mins Rating: G	12:30 p.m. Duration: 1 hr 53 mins Rating: PG	3:00 p.m. Duration: 1 hr 32 mins Rating: PG	5:30 & 8:00 p.m. Duration: 1 hr 32 mins Rating: PG	10:30 p.m. Duration: 2 hrs 29 mins Rating: G
--	---	--	---	--	--

Character Appearances

CINDERELLA
Preludes - 8:30 a.m.

MICKEY MOUSE
Lobby Atrium - 7:30 p.m.

BELLE
Preludes - 9:00 a.m.

TIL WE MEET AGAIN
Lobby Atrium - 10:00 p.m.

SNOW WHITE
Preludes - 9:30 a.m.

ARIEL
Preludes - 10:00 a.m.

CHARACTER DANCE PARTY
Lobby Atrium - 12:15 p.m.

PETER PAN
Lobby Atrium - 2:00 p.m.

CHIP & DALE
Lobby Atrium - 2:30 p.m.

DONALD & DAISY
Lobby Atrium - 3:00 p.m.

PLUTO
Lobby Atrium - 5:30 p.m.



Don't forget your Camera to capture those Magical Moments!

Check here each day for Character appearances.

For detailed Character appearance information, please dial 7-PALS or see the Character Information Board in the Lobby Atrium.

Meet-and-Greets will be advertised for the length of time the line will be open. To avoid disappointment, please meet at start time of appearances.

YOUTH ACTIVITIES THEMED EXPERIENCES

CLUBHOUSE SERIES focuses on movement and features content which appeals to younger children.

JUMP UP! SERIES includes large group games & movement-oriented activities.

IN THE SPOTLIGHT SERIES focuses on children's stage presence with lots of activities and enthusiasm.

STORYBOOK SERIES is designed with a strong connection to the Disney classic stories.

CREATE & INVENT SERIES will have a tactile focus allowing children to create and admire their work.

SOLVE IT! SERIES are less active, but will challenge children with problem/solutions-based activities.

YOUTH ACTIVITIES OPEN HOUSE

Activities for families, adults and children of all ages to enjoy together.

SHIP DIRECTORY

YOUTH ACTIVITIES

DISNEY'S OCEANEER CLUB	DECK 5, MID	9:00 AM - 12:00 MID
DISNEY'S OCEANEER LAB	DECK 5, MID	9:00 AM - 12:00 MID
EDGE	DECK 2, MID	10:00 AM - 12:00 MID
VIBE	DECK 11, MID	11:00 AM - 1:00 AM
FLOUNDER'S REEF NURSERY	DECK 5, AFT	9:00 AM - 11:00 PM

POOLS

Children under 12 years of age must have adult supervision in all pools.

GOOFY'S POOL	DECK 9, MID	6:00 AM - 12:00 MID
MICKEY'S POOL	DECK 9, AFT	8:00 AM - 10:00 PM
MICKEY'S SLIDE	DECK 9, AFT	10:00 AM - 4:00 PM
MICKEY'S SPLASH ZONE	DECK 9, AFT	8:00 AM - 8:00 PM
QUIET COVE POOL	DECK 9, FWD	6:00 AM - 12:00 MID

RECREATION

PORT ADVENTURES DESK	DECK 3, MID	
VISTA FITNESS CENTER	DECK 9, FWD	6:00 AM - 10:00 PM
WIDE WORLD OF SPORTS DECK	DECK 10, FWD	24 HOURS

GENERAL INFORMATION

BUENA VISTA THEATRE	DECK 5, AFT	SHOWTIMES
DISNEY VACATION CLUB DESK	DECK 4, MID	9:00 AM - 12:00 PM 2:30 PM - 10:00 PM
FUNNEL VISION	DECK 9, MID	SHOWTIMES
FUTURE CRUISE SALES DESK	DECK 4, MID	9:00 AM - 12:00 PM 3:30 PM - 6:00 PM 7:30 PM - 10:00 PM
GUEST SERVICES	DECK 3, MID	24 HOURS
MEDICAL HEALTH CENTER	DECK 1, FWD	9:30 AM - 11:00 AM 4:30 PM - 7:00 PM
PORT & SHOPPING DESK	DECK 3, MID	
PRELUDES	DECK 4, FWD	5:45 PM - 6:30 PM 8:00 PM - 8:30 PM
QUARTER MASTERS (ARCADE)	DECK 9, MID	24 HOURS
SHUTTERS PHOTO GALLERY	DECK 4, AFT	10:00 AM - 11:00 PM
VISTA SPA AND SALON	DECK 9, FWD	8:00 AM - 10:00 PM
WALT DISNEY THEATRE	DECK 4, FWD	SHOWTIMES

SHOPPING

ART GALLERY	DECK 4, MID	1:00 PM - 4:00 PM 7:00 PM - 9:00 PM
HAIR BRAIDING	DECK 9, MID	9:00 AM - 12:00 PM 2:00 PM - 7:00 PM
MICKEY'S MATES	DECK 4, FWD	9:30 AM - 11:00 PM
RADAR TRAP (DUTY FREE)	DECK 3, FWD	4:00 PM - 11:00 PM
TREASURE KETCH	DECK 4, FWD	9:30 AM - 11:00 PM

IMPORTANT NUMBERS

Fire/Security: 7-3001
Medical EMERGENCY: 7-3000
Health Center: 7-1923

DINNER MENU	Animator's Palate: 'Til We Meet Again	DRINK OF THE DAY	High Tide (Alcoholic)	WEATHER FORECAST	Friday: Cloudy
	Parrot Cay: 'Til We Meet Again		Banana Lime Ginger (Non - Alcoholic)		High: 75°F/24°C
Dining Times: 5:45pm & 8:15pm		Evening Attire: Cruise Casual			

DINING & LOUNGES

BREAKFAST

BEACH BLANKET BUFFET	DECK 9, AFT	7:30 AM - 10:45 AM
GOOFY'S GALLEY	DECK 9, AFT	6:30 AM - 9:00 AM
TRITON'S (A-LA CARTE)	DECK 3, MID	8:00 AM - 9:30 AM

LUNCH

BEACH BLANKET BUFFET	DECK 9, AFT	12:00 PM - 2:00 PM
GOOFY'S GALLEY	DECK 9, AFT	10:30 AM - 7:00 PM
PARROT CAY	DECK 3, AFT	12:15 PM - 1:30 PM
PINOCCHIO'S PIZZERIA	DECK 9, MID	10:30 AM - 6:00 PM
PLUTO'S DOG HOUSE	DECK 9, AFT	10:30 AM - 6:00 PM
TRITON'S	DECK 3, MID	12:00 PM - 1:30 PM

DINNER

ANIMATOR'S PALATE	DECK 4, AFT	5:45 PM & 8:15 PM
PARROT CAY	DECK 3, AFT	5:45 PM & 8:15 PM
TRITON'S	DECK 3, MID	5:45 PM & 8:15 PM
PALO (18+)	DECK 10, AFT	6:00 PM - 9:00 PM
PLUTO'S DOG HOUSE	DECK 9, AFT	6:00 PM - 9:30 PM

LATE NIGHT SNACKS

DIVERSIONS	DECK 3, FWD	11:00 PM - 12:00 MID
ICE CREAM AT GOOFY'S GALLEY	DECK 9, AFT	7:00 PM - 12:00 MID
PINOCCHIO'S PIZZERIA	DECK 9, MID	9:30 PM - 12:00 MID
PROMENADE LOUNGE	DECK 3, AFT	11:00 PM - 12:00 MID

ADDED FEATURES

BEVERAGE STATION	DECK 9, AFT, PORT SIDE	24 HOURS
ROOM SERVICE	DIAL 6801 OR 6802	24 HOURS

ENTERTAINMENT - LOUNGES - BARS

Adults must be 21 and older to consume alcoholic beverages.

CADILLAC LOUNGE (18+)	DECK 3, FWD	5:30 PM - 12:00 MID
COVE CAFE (18+)	DECK 9, MID	6:30 AM - 12:00 MID
DIVERSIONS (18+ AFTER 9:00 PM)	DECK 3, FWD	11:00 AM - 12:00 MID
INTERNET CAFE	DECK 3, AFT	24 HOURS
OUTLOOK CAFE (18+)	DECK 10, MID	10:00 AM - 12:00 MID
PINOCCHIO'S PIZZERIA	DECK 9, MID	9:00 AM - 12:00 MID
PLUTO'S DOG HOUSE	DECK 9, AFT	10:30 AM - 6:00 PM
PRELUDES	DECK 4, FWD	5:45 PM - 6:30 PM 8:00 PM - 8:30 PM
PROMENADE LOUNGE (FAMILY)	DECK 3, AFT	8:00 AM - 12:00 MID
SIGNALS (18+)	DECK 9, FWD	9:30 AM - 10:30 PM
STUDIO SEA	DECK 4, MID	SHOWTIMES
WAVEBANDS (18+)	DECK 3, FWD	9:45 PM - 2:00 AM

Consumers who order raw or partially cooked, ready-to-eat food of animal origin, are hereby informed that the food is not sufficiently cooked to ensure its safety.