

PERSONAL NAVIGATOR

SUNDAY, NOVEMBER 3, 2013

Sunrise: 6:28 a.m. Sunset: 5:51 p.m.
 Evening Attire: Cruise Casual
 All Ashore: Please refer to your tendering letter.
 Last Tender: 3:30 p.m.

Sunday: Cloudy High: 83°F/28°C
 Monday: Cloudy High: 79°F/26°C

GRAND CAYMAN

DISNEY CRUISE LINE PRESENTS



WALT DISNEY THEATRE

Deck 4, Forward,
 6:15 p.m. & 8:30 p.m.

As a courtesy to all Guests, we kindly advise that the saving of seats is **not** permitted in the Walt Disney Theatre.



Assistance available at the entrance to the Walt Disney Theatre 30 minutes prior to show time.

Grand Cayman Port Information

The Cayman Islands were first sighted by European explorers in 1503, in a wayward voyage headed by Christopher Columbus. Though the two smaller islands were discovered on this fateful trip, the largest of them, Grand Cayman, would escape attention by sailors until 1655, when the area was claimed by the British. For centuries from the time of their discovery, the Cayman Islands would provide a place for ships to come ashore and rest on their journeys into the Caribbean. Crewmen on these ships would routinely replenish themselves on the meat provided by the native population of turtles.

By the 19th century, Grand Cayman was overtaken by pirates. It would take political upheaval and the establishment of a local government under British rule to transform the island into what it is today. Discover a place that—once a welcome refuge for buccaneers—is today a treasured tourist hotspot. From sparkling surf to the bounty of local shops, whatever your pleasure, you'll find it here.

DOCKING - Please refer to tender letter.

The ship anchors outside of the port and Guests take a tender to the dock. Tenders are small boats that provide transportation between the ship and the shore. Guests with special needs/disabilities wishing to leave the ship should check with Guest Services for accessible gangways.



DANCE PARTY

Tune in and rock with us at this family dance party! Spread the word, there will be cool music, new dances, contests and a chance to win great prizes.

D Lounge,
 Deck 4, Midship,
 10:15 p.m.

Don't Miss:

Cruisin' for Trivia

Promenade Lounge, Deck 3, Aft - 3:15 p.m.

Navigate your way through a round of questions testing your general knowledge.

Playhouse D Lounge

D Lounge, Deck 4, Midship - 4:45 p.m.

Calling our youngest of cruisers! Here is a special playtime that is just for you. Come meet new friends and join in on the fun as your Cruise Staff team takes you through interactive activities made just for you!

Variety Show: Mike Price (18+)

Fathoms, Deck 3, Forward - 10:15 p.m.

Featuring the Comedy & Juggling of Mike Price, in this exclusive adult cabaret style show.

Rockin' Rowdy (18+)

Fathoms, Deck 3, Forward - 10:45 p.m.

Join your Club Host as we round up the greatest classic rock and urban country hits. Featuring a bootstomping performance from the Boot Scootin' dancers to start the party.



Welcome to the beautiful Cayman Islands. There are many new & exciting adventures to choose from on this picturesque island! Be sure to visit the Port Adventures Desk, Deck 3, Midship for any questions.

DINNER MENU

Animator's Palate: Show Dinner
 Carioca's: South American Dinner
 Lumière's: French Dinner

DRINK OF THE DAY

Mojito (Alcoholic)
 Cranberry No-jito (Non Alcoholic)

IMPORTANT NUMBERS

Fire/Security: 7-3001
 Medical Emergency: 7-3000
 Health Center: 7-1923

FUN FOR ALL AGES HIGHLIGHTS

INTERDENOMINATIONAL SERVICE (GUEST LED)

Keys, Deck 3, Forward - 8:30 a.m.

A quiet space reserved for Guests who wish to come together to worship.

CRUISIN' FOR TRIVIA

Promenade Lounge, Deck 3, Aft - 3:15 p.m.

Navigate your way through a round of questions testing your general knowledge.



DISNEY VACATION CLUB GROUP PREVIEW

Fathoms, Deck 3, Forward - 4:30 p.m.

Want to learn more about taking magical vacations year after year? Please see a Disney Vacation Club representative on Deck 4, Midship, or call 7-2805 from your stateroom phone for more information about our interactive group presentation.

PLAYHOUSE D LOUNGE

D Lounge, Deck 4, Midship - 4:45 p.m.

Calling our youngest of cruisers! Here is a special playtime that is just for you. Come meet new friends and join in on the fun as your Cruise Staff team takes you through interactive activities made just for you!

OFFICER PIN TRADING

Preludes, Deck 4, Forward - 7:30 p.m.

Come trade pins with the officers of the Disney Magic.



D TUNES FAM JAM

D Lounge, Deck 4, Midship - 10:15 p.m.

Tune in and rock with us at this family dance party! Spread the word, there will be cool music, new dances, contests and a chance to win great prizes.

ADULT ACTIVITY HIGHLIGHTS



SENSES SPA FITNESS CLASSES & SEMINARS

Pathway To Yoga - Senses Spa Fitness Center - 7:30 a.m.

Body Sculpt Boot Camp - Senses Spa Fitness Center - 8:00 a.m.

Eat More to Weigh Less - Senses Spa & Salon - 4:00 p.m.

TASTING CLASSES

Whiskey Tasting (21+) - Cove Cafe - 10:30 p.m.

Please make reservations for tastings at Guest Services for a nominal fee. Tasting Seminars are only for Guests 21 and Older.



CLUB 18*21 - MIXER

O'Gills Pub, Deck 3, Forward - 10:00 p.m.

SINGLES' MINGLE

Cove Cafe, Deck 9, Midship - 4:45 p.m.

Single, single parent or just traveling alone? Join your Cruise Staff for an informal gathering.



ESPN DREAM TEAM DRAFT DAY - FOOTBALL

O'Gills Pub, Deck 3, Forward - 7:30 p.m.

Join the "Commissioner" and engage in this interactive fantasy football draft unlike anything you've ever seen! Can YOU draft the greatest football team of All-Time?

ROCKIN' ROWDY

Fathoms, Deck 3, Forward - 10:45 p.m.

Join your Club Host as we round up the greatest classic rock and urban country hits. Featuring a bootstomping performance from the Boot Scootin' dancers to start the party.



MEGA RAFFLE JACKPOT BINGO

Fathoms, Deck 3, Forward

Card Sales - 7:15 p.m.

Game Starts - 7:30 pm

Join your Cruise Staff for family Bingo fun! Four cash prize games and great raffle prize packs to be won. Plus free Disney goodies for all in attendance! Don't miss out on the fun!

YOUTH ACTIVITIES HIGHLIGHTS

DINE & PLAY

A convenience for families dining at 8:15 p.m., our Youth Activities Counselors will be available at 9:15 p.m. at the entrance of Lumière's, Carioca's and Animator's Palate dining rooms to bring registered children to join the fun in the Oceaneer Club and Oceaneer Lab.



Deck 5, Aft (7-5864)

8:00 a.m. - 11:00 p.m.

Infants and Toddlers can enjoy toys and activities at It's a Small World Nursery. Reservations are first come, first served so please stop by!



Deck 5, Midship (7-1439)

(3-12 years old)

9:00 a.m. - 12:00 mid

BECOME IRON MAN!

10:30 a.m.

Do you want to be Iron Man? Marvel's Avengers Academy invites you to virtually suit up in Iron Man's armor for an exciting interactive training gauntlet.

MEMORY WALL

11:45 a.m. & 1:15 p.m.

It's the ultimate matching game onboard just for fun.



Deck 5, Midship (7-1445)

(3-12 years old)

9:00 a.m. - 12:00 mid

SUPER SLOPPY SCIENCE

9:15 a.m. & 3:15 p.m.

Join Professor Make-O-Mess in some of the most extreme experiments you will ever see in the world of Super Sloppy Science!

HATS OFF TO PETER PAN

1:45 p.m.

You'll believe you can fly. All it takes is faith, trust, and pixie dust and a special visit from Peter Pan! Rediscover the magic of Neverland!



Deck 2, Midship (7-5816)

(11-14 years old)

10:00 a.m. - 1:00 a.m.

GUITAR HERO CHALLENGE

12:30 p.m.

Test your gaming skills and compete to be the ultimate guitar hero.

SHIP FACTOR

1:45 p.m.

Ready for one of the toughest challenge competitions onboard?



Deck 11, Midship (7-18517)

(14-17 years old)

10:00 a.m. - 2:00 a.m.

ESPN DREAM TEAM DRAFT DAY - BASEBALL

6:00 p.m.

Play ball! Join the "Commissioner" and engage in this interactive fantasy baseball draft unlike anything you've ever seen! Can YOU draft the greatest baseball team of All-Time?

PUMP IT UP

9:00 p.m.

Join us in the Fitness Center for a Teen Only workout. Meet in Vibe to join in!

BUENA VISTA THEATRE

Today's Movies



12:45 p.m.
Duration: 1 hr 32 mins
Rating: PG

DOLBY 3D



5:45 p.m. & 8:15 p.m.
Duration: 1 hr 43 mins
Rating: G



2:45 p.m.
Duration: 2 hrs 29 mins
Rating: PG-13

DOLBY 3D

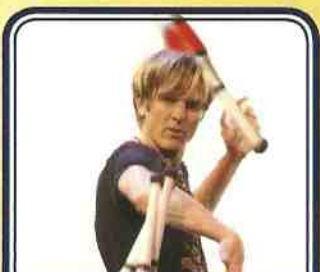


10:30 p.m.
Duration: 2 hrs 10 mins
Rating: PG-13



Come audition to be part of DCL's brand new band, Goofy and the Pound Hounds! This show has something for all ages and is certain to be a blast for the entire family!

D Lounge,
Deck 4, Midship,
7:30 p.m.



ADULT VARIETY

Featuring the Comedy & Juggling of Mike Price, as he entertains you in this adult exclusive show.

Fathoms (18+),
Deck 3, Forward,
10:15 p.m.

YOUTH ACTIVITIES OPEN HOUSE

Open House is an opportunity for all to come and participate in a variety of exciting activities and free time in the Oceaneer Club, Oceaneer Lab, Edge, Vibe, and It's a Small World Nursery throughout the cruise. During these times secured programming will still be offered in the other venues for those looking to check their children into care.

Vibe: 10:00 a.m. - 11:00 a.m.
Edge: 10:00 a.m. - 11:00 a.m.

Disney's Oceaneer Lab: 7:00 p.m. - 8:30 p.m.
Disney's Oceaneer Club: 9:00 a.m. - 1:00 p.m.

MORE TO ENJOY WHILE ONBOARD



PLAN YOUR NEXT CRUISE

Enjoying the cruise? Book another Disney Cruise Line Vacation today! Book your next cruise today for the best availability and pricing. You'll save 10%, receive up to a \$200 onboard credit and pay a reduced deposit! Visit the Future Cruise Sales Desk located on Deck 4, Midship or call 7-2848.



DISNEY VACATION CLUB GROUP PREVIEW

Want to learn more about taking magical vacations year after year? Please see a Disney Vacation Club representative on Deck 4, Midship, or call 7-2805 from your stateroom phone for more information about our interactive group presentation.



PORT & SHOPPING INFORMATION

Grand Cayman is not to be missed offering some of the best tax & duty free shopping this cruise! Meet your Port Shopping Guide, Alyssa, in Diamonds International store #1 between 9:00 a.m. and 11:00 a.m. for incredible savings. There will be a free professional face painter and cupcakes for the kids! Make sure to pick up your Grand Cayman shopping maps and coupon packs on the gangway!

ONBOARD AIRLINE CHECK IN

Stop by the Guest Services Desk, Deck 3, Midship to find out about enrolling in our Onboard Airline Check In Service.

SURF AT SEA

\$0.75 per minute or save money by buying blocks of time. \$27.50 for 50 minutes, \$40.00 for 100 minutes and \$75.00 for 250 minutes. Wireless information sheets are available at Guest Services, Deck 3, Midship and the Internet Cafe, Deck 3, Aft. Due to the technology involved and satellite connectivity, the onboard internet service will be noticeably slower than you may be accustomed to and might at times be interrupted or unavailable.

QUARTER MASTERS ARCADE

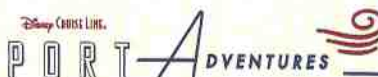
Where can you fly a fighter jet, save a Princess, race NASCAR's greatest and beat bad guys all before dinner? Quarter Masters is on Deck 9, Midship, where the champions play.



PAMPER PACKAGE

- Full Body Massage
 - Hydrating Facial
 - Fajipani Scalp and Foot Massage
- Only \$149.00

Deck 9, Forward - Phone: 7-1465



Welcome to the beautiful Cayman Islands. Take this opportunity to discover Grand Cayman's world renowned snorkeling. Get up close and personal with real live stingrays on the Stingray City Snorkel tour or just sit back, relax and enjoy the sights and sounds of this island on the Grand Cayman Island tour.

Visit our friendly Port Adventures team located Deck 3, Midship, and let us answer all your questions about Grand Cayman.

SHOPPING

OFFICER PIN TRADING

Pick up some Disney Cruise Line® pins when you stop by Mickey's Mainsail, Deck 4, Forward. Later, join the Officers of the Disney Magic for pin trading fun at 7:30 p.m. in Preludes, Deck 4, Forward.

ARTWORK BY DANIEL ARRIAGA AT THE VISTA GALLERY

View enchanting artwork by visiting the Vista Gallery for the Disney Storytellers series featuring artists such as Daniel Arriaga. Having provided his artistic talent to Walt Disney Animation Studios and, his current home, Pixar Animation Studios, Daniel's creations capture your favorite Disney characters in a way that is sure to excite any Disney fan. Vista Gallery, Deck 4, Midship.

DISNEY CRUISE LINE® DOONEY & BOURKE HANDBAGS

Swing by Whitecaps and commemorate your cruise with style with the new nautical themed Disney Cruise Line® Dooney & Bourke handbag collection. Deck 4, Forward.

ERNST BENZ WATCHES

Manufactured in Switzerland and made in the time honored tradition of aviation timekeepers and the fine art of watch making, these large formats, self-winding instruments are renowned for their accuracy, durability and legibility. Stop by Whitecaps to see our full collection today! Deck 4, Forward.

SOPHIA FIORI DIAMOND TRUNK SHOW

Sophia Fiori is an LA based designer, wholesaler, and one of Hollywood's favorite designers. Industry leaders in colored diamonds, and more specifically Caribbean blue diamonds - one of the single most popular purchases at sea because it reminds everyone of the colors of the Breathtaking Ocean! Whitecaps, Deck 4, Forward.

BEAUTIFULLY DISNEY

Captivate your mind with Beautifully Disney, a new collection of cosmetics and beauty product. Beautifully Disney defines timeless beauty through collections of fairytale nostalgia, unlocking harmonious colors. Through the collections of this new and enchanting line, it is the goal to keep you romanced by the contrast of mysterious yet inviting colors. Available at Whitecaps, Deck 4, Midship.

CHAMILIA

Remember your Disney Cruise forever! Disney Cruise Line charms available.

Whitecaps, Deck 4, Forward.

CHAMILIA



PORTFOLIO DEAL

Purchase any photo package and get \$5.00 off of an 8 x 10 portfolio frame.

Every portfolio comes with two FREE 8 x 10 stock photos!

**Please note that photos are available for viewing on our interactive photo kiosks approximately five hours after being taken and are only available for purchase during this cruise.*

IMPORTANT INFORMATION

Security Notice

All Guests (including Children) who wish to disembark or embark the ship are required to present their Key to the World card at the gangway. A photo ID is also required for those Guests who are 18 years of age or older. Guests under the age of 18 are required to have a parent, guardian or other responsible adult sign an authorization form at the Guest Service Desk if they wish to go ashore unaccompanied or with any adult from another stateroom. Authorization forms are available at the gangways and Guest Services.

Cold and Flu Reminder

Please wash hands frequently and thoroughly, particularly before meals. Contact the Health Center by dialing 7-1923, should anyone in your party become ill.

Inclement Weather

For the safety of all Guests, outdoor events may be changed due to unforeseen weather conditions.

Corridor Quiet Hours

As a courtesy to all our Guests, please recognize quiet hallway hours from 10:00 p.m. til 8:00 a.m.

Environmental Message

With Disney's commitment to the Environment please refrain from throwing anything over the Ship's side. Thank you.

No Reserved Seats Policy

As a courtesy to all Guests we kindly advise that the saving of seats is not permitted in the Walt Disney Theatre, and the saving of the sun loungers is not permitted on Deck 9 and 10. Items left unattended will be returned to lost and found at Guest Services, Deck 3, Midship.

Smoking

For the comfort of our Guests the following open deck areas on the Starboard Side are designated as Smoking areas: Deck 4, Starboard side from 6:00 p.m. to 6:00 a.m. ONLY, Deck 9, Forward Starboard side at Quiet Cove and Deck 10, Starboard side. Smoking is prohibited in all Guest staterooms. Guests found smoking in their staterooms will be charged a \$250 stateroom recovery fee. Electronic cigarettes may only be used in designated smoking areas.

Sunscreen Advisory

Don't forget to apply sunscreen and insect repellent when going ashore.

Walt Disney Theatre

Theatrical performances may use artificial fog, strobe lights, pyrotechnics and other special effects. For the safety of our performers and the comfort of those around you, the use of any photography or video recording device or any electronic equipment is prohibited.

Verandah Safety

Please do not leave any combustible materials on your balcony when not present in your stateroom for safety reasons.

Morning	8:30	8:45	9:00	9:15	9:30	9:45	10:00	10:15	10:30	10:45	11:00	11:15	11:30	11:45	12:00	12:15	12:30	12:45	1:00	1:15	1:30							
FUNNEL VISION													The Emperor's New Groove (G) Funnel Vision				The Little Mermaid (G) Funnel Vision											
BUENA VISTA THEATRE	Planes (PG) Duration: 1 Hour 32 Minutes																											
CHARACTER	Hook & Smee <small>Lobby Atrium (P)</small>			Stitch <small>Lobby Atrium (P)</small>																								
				Captain America <small>Preludes</small>			Donald <small>Lobby Atrium (P)</small>																					
FUN FOR ALL AGES	Port Adventures - Please check your tickets for meeting times and locations																											
	Youth Activities Open House <small>Disney's Oceaneer Club</small>																											
	Interdenominational Service <small>Keys</small>				Little Einstein's Adventure <small>Disney's Oceaneer Club</small>				Become Iron Man! <small>Disney's Oceaneer Club</small>																			
ADULTS	Friends of Bill W. <small>Animator's Palate</small>			NFL Football <small>O'Gills Pub (Subject to satellite availability)</small>																								
VIBE 14-17 YEARS OLD							Youth Activities Open House				Craft Corner				Mind Boggles				Ice Cream Social									
EDGE 11-14 YEARS OLD							Youth Activities Open House				Mad Gab								Guitar Hero Challenge									
OCEANEER LAB 3-12 YEARS OLD							Super Sloppy Science								Piston Cup Challenge				Lunch									
OCEANEER CLUB 3-12 YEARS OLD							Youth Activities Open House																					
							Little Einstein's Adventure				Become Iron Man!								Memory Wall				Memory Wall					

Afternoon	1:45	2:00	2:15	2:30	2:45	3:00	3:15	3:30	3:45	4:00	4:15	4:30	4:45	5:00	5:15	5:30	5:45	6:00	6:15	6:30	6:45							
FUNNEL VISION	The Little Mermaid (G) Funnel Vision			Hercules (G) Funnel Vision									The Lion King (G) Funnel Vision				The Muppets (PG) Funnel Vision											
BUENA VISTA THEATRE							The Lone Ranger (PG-13) Duration: 2 Hours 29 Minutes											Monsters University (G) Duration: 1 Hour 43 Minutes										
CHARACTER													Tiana <small>Dk 4, Mid</small>				Cinderella <small>Dk 4, Mid</small>				Captain America <small>Preludes</small>							
													Captain America <small>Preludes</small>						Aurora <small>Dk 4, Mid</small>									
FUN FOR ALL AGES	Xbox® Challenge <small>Promenade Lounge</small>						Cruisin' for Trivia <small>Promenade Lounge</small>						Family Crafts: Origami <small>Promenade Lounge</small>			Playhouse D Lounge <small>D Lounge</small>												
												Disney Vacation Club Group Preview <small>Fathoms</small>				Live Music with Dreem <small>Promenade Lounge</small>							Walt Disney Theatre					
ADULTS	NFL Football <small>O'Gills Pub (Subject to satellite availability)</small>										Singles' Mingle <small>Cove Cafe</small>																	
												NFL Football <small>O'Gills Pub (Subject to satellite availability)</small>																
VIBE 14-17 YEARS OLD	Ice Cream Social			Mad Gab						Video Scavenger Hunt						ESPN Dream Team Draft Day Sports Deck Fun												
EDGE 11-14 YEARS OLD	Ship Factor						Brains and Brawns			Picture This			Craft Corner						Youth Activities Open House									
OCEANEER LAB 3-12 YEARS OLD	Hats Off to Peter Pan						Super Sloppy Science						Animation Antics						Dinner									
OCEANEER CLUB 3-12 YEARS OLD	Marvel Avengers Academy						Toy Story Boot Camp			Picture This						Puzzle Playtime						Dinner						

Evening	7:00	7:15	7:30	7:45	8:00	8:15	8:30	8:45	9:00	9:15	9:30	9:45	10:00	10:15	10:30	10:45	11:00	11:15	11:30	11:45	12:00				
FUNNEL VISION	The Muppets (PG) Funnel Vision						The Muppets (PG) Funnel Vision									Oz: The Great and Powerful (PG) Funnel Vision							>12:22 a.m.		
BUENA VISTA THEATRE							Monsters University (G) Duration: 1 Hour 43 Minutes												Iron Man 3 (PG-13) Duration: 2 Hours 10 Minutes						
CHARACTER			Donald <small>Dk 4, Mid</small>		Mickey <small>Dk 4, Mid</small>								Minnie <small>Dk 4, Mid</small>				Chip & Dale <small>Dk 4, Mid</small>		Goofy <small>Dk 4, Mid</small>						
													Pluto <small>Dk 5, Mid</small>				Mickey <small>Dk 5, Mid</small>								
FUN FOR ALL AGES	Bingo <small>Pre Sales</small>		Mega Raffle Jackpot Bingo <small>Fathoms</small>						Walt Disney Theatre		Family Superstar Karaoke <small>D Lounge</small>				Family Superstar Karaoke <small>D Lounge</small>										
			Goofy's Rock Stars and Guitars <small>D Lounge</small>														Live Music with Dreem <small>Promenade Lounge</small>		Live Music with Dreem <small>Promenade Lounge</small>						
ADULTS	ESPN Dream Team Draft Day - Football <small>O'Gills Pub</small>												DJ Matt <small>Fathoms</small>		Variety: Mike Price <small>Fathoms</small>				DJ Matt <small>Fathoms</small>		Late Night Piano with Gayla Smith <small>Keys</small>				
							Live Piano with Gayla Smith <small>Keys</small>						NFL Football <small>O'Gills Pub (Subject to satellite availability)</small>						Club 18*21- Mixer <small>O'Gills Pub</small>						
VIBE 14-17 YEARS OLD	Youth Activities Open House						Smoothie Time			Pump It Up			Gender Wars			Bring It!									
EDGE 11-14 YEARS OLD	Sports Deck Fun		Animation Antics						Karaoke Challenge			Crowning the Couch Potato			Pajamarama Movie Night										
OCEANEER LAB 3-12 YEARS OLD	Youth Activities Open House												4th Pigs Pasta Palace						Magic Show						
			Anyone Can Cook																						
OCEANEER CLUB 3-12 YEARS OLD	Pluto's Pajama Party												Little Einstein's Adventure						Marvel Avengers Academy						

Symbol for activities that will be repeated during the cruise



FOLD

Fold along the dotted lines and take me with you so you don't miss any of the fun!

FOLD

Disney's Oceaneer Club
Disney's Buena Vista Theatre
Disney's Fathoms

Disney's Villains Tonight
Disney's Animation Series
Disney's Create a Character Series
Disney's Open House

Disney's Villains Tonight
Disney's Animation Series
Disney's Create a Character Series
Disney's Open House

SUNDAY, NOVEMBER 3, 2013 - GRAND CAYMAN

BUENA VISTA THEATRE

DOLBY 3D DOLBY 3D



PLANES 12:45 p.m. Duration: 1 hr 32 mins Rating: PG	THE LONE RANGER 2:45 p.m. Duration: 2 hrs 29 mins Rating: PG-13	MONSTERS UNIVERSITY 5:45 p.m. & 8:15 p.m. Duration: 1 hr 43 mins Rating: G	THE DARK KNIGHT RISES 10:30 p.m. Duration: 2 hrs 10 mins Rating: PG-13
--	--	---	---

Character Appearances

CAPTAIN HOOK & MR SMEE
Lobby Atrium (P) - 9:15 a.m.

CAPTAIN AMERICA
Preludes - 9:30 a.m.,
5:00 p.m. & 6:00 p.m.

STITCH
Lobby Atrium (P) - 9:45 a.m.

DONALD DUCK
Lobby Atrium (P) - 10:15 a.m.
Deck 4, Midship - 7:15 p.m.

PRINCESS TIANA
Deck 4, Midship - 4:45 p.m.

CINDERELLA
Deck 4, Midship - 5:15 p.m.

PRINCESS AURORA
Deck 4, Midship - 5:45 p.m.

MICKEY MOUSE
Deck 4, Midship - 7:45 p.m.
Deck 5, Midship - 10:00 p.m.

PLUTO
Deck 5, Midship - 9:30 p.m.

MINNIE MOUSE
Deck 4, Midship - 9:30 p.m.

CHIP & DALE
Deck 4, Midship - 10:00 p.m.

GOOFOY
Deck 4, Midship - 10:30 p.m.



Don't forget your Camera to capture those Magical Moments!

Check here each day for Character appearances.

For detailed Character appearance information, see the Character Information Board in the Lobby Atrium.

Meet-and-Greets will be advertised for the length of time the line will be open. To avoid disappointment, please meet at start time of appearances.

YOUTH ACTIVITIES THEMED EXPERIENCES

CLUBHOUSE SERIES
focuses on movement and features content which appeals to younger children.

STORYBOOK SERIES
is designed with a strong connection to the Disney classic stories.

JUMP UP! SERIES
includes large ground games & movement-oriented activities.

CREATE & INVENT SERIES
will have a tactile focus allowing children to create and admire their work.

IN THE SPOTLIGHT SERIES
focuses on children's stage presence with lots of activities and enthusiasm.

SOLVE IT! SERIES
are less active, but will challenge children with problem/solutions-based activities.

YOUTH ACTIVITIES OPEN HOUSE

Activities for families, adults and children of all ages to enjoy together.

SHIP DIRECTORY

YOUTH ACTIVITIES

DISNEY'S OCEANEER CLUB	DECK 5, MID	9:00 AM - 12:00 MID
DISNEY'S OCEANEER LAB	DECK 5, MID	9:00 AM - 12:00 MID
EDGE	DECK 2, MID	10:00 AM - 1:00 PM
IT'S A SMALL WORLD NURSERY	DECK 5, AFT	8:00 AM - 11:00 PM
VIBE	DECK 11, MID	10:00 AM - 2:00 PM

POOLS

*Children under 12 years of age must have adult supervision in all pools.

AQUADUNK	DECK 10, MID	10:00 AM - 10:00 PM
AQUALAB	DECK 9, AFT	8:30 AM - 9:00 PM
GOOFOY'S POOL	DECK 9, MID	9:00 AM - 6:00 PM
		8:00 PM - 10:00 PM
NEPHEWS' SPLASH ZONE	DECK 9, AFT	8:30 AM - 6:00 PM
QUIET COVE POOL	DECK 9, FWD	6:00 AM - 12:00 MID
TWIST 'N' SPOUT	DECK 9, AFT	9:30 AM - 9:00 PM

RECREATION

PORT ADVENTURES DESK	DECK 3, MID	7:00 AM - 10:30 AM
		7:00 AM - 8:30 AM
SENSES FITNESS CENTER	DECK 9, FWD	6:00 AM - 10:00 PM
WIDE WORLD OF SPORTS DECK	DECK 10, FWD	24 HOURS

GENERAL INFORMATION

BUENA VISTA THEATRE	DECK 5, AFT	SHOWTIMES
DISNEY VACATION CLUB DESK	DECK 4, MID	9:00 AM - 11:00 AM
		5:30 PM - 10:00 PM
FUTURE CRUISE SALES DESK	DECK 4, MID	3:00 PM - 6:00 PM
		7:30 PM - 8:30 PM
FUNNEL VISION	DECK 9, MID	SHOWTIMES
GUEST SERVICES	DECK 3, MID	24 HOURS
MEDICAL HEALTH CENTER	DECK 1, FWD	9:30 AM - 11:00 AM
		4:30 PM - 7:00 PM
PORT & SHOPPING DESK	DECK 3, MID	7:30 PM - 8:30 PM
PRELUDES	DECK 4, FWD	5:30 PM - 8:30 PM
QUARTER MASTERS (ARCADE)	DECK 9, MID	24 HOURS
SENSES SPA AND SALON	DECK 9, FWD	8:00 AM - 10:00 PM
SHUTTERS PHOTO GALLERY	DECK 4, AFT	5:00 PM - 11:00 PM
WALT DISNEY THEATRE	DECK 4, FWD	SHOWTIMES

SHOPPING

MICKEY'S MAINSAIL	DECK 4, FWD	5:30 PM - 11:00 PM
QUACKS	DECK 9, MID	
SEA TREASURES	DECK 3, FWD	5:30 PM - 11:00 PM
VISTA GALLERY	DECK 4, MID	5:30 PM - 10:00 PM
WHITECAPS	DECK 4, FWD	5:30 PM - 11:00 PM

IMPORTANT NUMBERS

Fire/Security: 7-3001
Medical/EMERGENCY: 7-3000
Health Center: 7-1923

DINNER MENU	Animator's Palate: Show Dinner	DRINK OF THE DAY	Mojito	WEATHER FORECAST	Sunday: Cloudy
	Carioca's: South American Dinner		(Alcoholic)		High: 83°F/28°C
	Lumière's: French Dinner		Cranberry No-Jito		Monday: Cloudy
			(Non - Alcoholic)		High: 79°F/26°C
Dining Times: 5:45pm & 8:15pm					
Evening Attire: Cruise Casual					

DINING & LOUNGES

BREAKFAST

CABANAS	DECK 9, AFT	7:00 AM - 11:30 AM
DAISY'S DE-LITES	DECK 9, AFT	6:30 AM - 9:00 AM
CARIOCA'S	DECK 3, AFT	8:00 AM - 10:00 AM
LUMIÈRE'S (À-LA CARTE)	DECK 3, MID	8:00 AM - 9:30 AM

LUNCH

CABANAS	DECK 9, AFT	11:30 AM - 2:00 PM
DAISY'S DE-LITES	DECK 9, AFT	11:00 AM - 6:00 PM
LUMIÈRE'S	DECK 3, MID	12:00 PM - 1:30 PM
PETE'S BOILER BITES	DECK 9, AFT	11:00 AM - 6:00 PM
PINOCCHIO'S PIZZERIA	DECK 9, MID	11:00 AM - 6:00 PM

DINNER

ANIMATOR'S PALATE	DECK 4, AFT	5:45 PM & 8:15 PM
CABANAS TABLE SERVICE	DECK 9, AFT	6:30 PM - 8:30 PM
CARIOCA'S	DECK 3, AFT	5:45 PM & 8:15 PM
LUMIÈRE'S	DECK 3, MID	5:45 PM & 8:15 PM
PALO (FOR RESERVATIONS CALL 7-8843)	DECK 10, AFT	6:00 PM - 8:30 PM
PETE'S BOILER BITES	DECK 9, AFT	6:00 PM - 10:00 PM

LATE NIGHT SNACKS

O'GILLS PUB	DECK 3, FWD	10:45 PM - 11:45 PM
PINOCCHIO'S PIZZERIA	DECK 9, MID	9:00 PM - 12:00 MID
PROMENADE LOUNGE	DECK 3, AFT	10:45 PM - 11:45 PM

ADDED FEATURES

EYE SCREAM	DECK 9, AFT	11:00 AM - 11:00 PM
FROZONE TREATS	DECK 9, AFT	11:30 AM - 10:00 PM
BEVERAGE STATION	DECK 9, AFT	24 HOURS
ROOM SERVICE	DIAL 7-4330	24 HOURS

ENTERTAINMENT - LOUNGES - BARS

Adults must be 21 and older to consume alcoholic beverages.

AFTER HOURS	DECK 3, FWD	(AFTER 9:00 PM. ADULTS ONLY)
COVE CAFE (18+)	DECK 9, MID	7:00 AM - 12:00 MID
FATHOMS (18+)	DECK 3, FWD	7:00 PM - 2:00 AM
INTERNET CAFE	DECK 3, AFT	24 HOURS
KEYS (18+)	DECK 3, FWD	5:30 PM - 1:00 AM
O'GILLS PUB (18+)	DECK 3, FWD	3:00 PM - 1:00 AM
PRELUDES	DECK 4, FWD	5:30 PM - 8:30 PM
PROMENADE LOUNGE	DECK 3, AFT	9:00 AM - 12:00 MID
PINOCCHIO'S PIZZERIA	DECK 9, MID	9:30 AM - 12:00 MID
SIGNALS (18+)	DECK 9, FWD	10:30 AM - 11:00 PM
D LOUNGE	DECK 4, MID	SHOWTIMES

Public Health Advisory: Consuming raw or undercooked meats, poultry, seafood, shellfish, or eggs may increase your risk for foodborne illness, especially if you have certain medical condition.

All Ashore: Please refer to your tendering letter
Last Tender: 3:30 p.m.

Ship's Agent In Grand Cayman

Bodden Shipping Agency, Fifth Floor, Room 508, Gorang Avenue, GT Grand Cayman, Tel: 345-949-6254 or 345-949-7424