

PERSONAL NAVIGATOR

SATURDAY, NOVEMBER 2, 2013

Sunrise: 6:38 a.m. Sunset: 6:00 p.m.
Evening Attire: Optional Dress Up

Saturday: Partly Sunny High: 81°F/27°C
Sunday: Cludy High: 81°F/27°C

DAY AT SEA

TWICE CHARMED

AN ORIGINAL TWIST ON THE CINDERELLA STORY

STEP BACK IN TIME TO EXPERIENCE THE STORY OF CINDERELLA IN A MAGICAL NEW WAY. ENJOY THIS MAGNIFICENT MUSICAL PRODUCTION WITH YOUR FAVORITE CHARACTERS - AND A FEW NEW ONES!

WALT DISNEY THEATRE

Deck 4, Forward

6:15 p.m. & 8:30 p.m.

As a courtesy to all Guests, we kindly advise that the saving of seats is **not** permitted in the Walt Disney Theatre.



Assistance available at the entrance to the Walt Disney Theatre 30 minutes prior to show time.



Disney MAGIC Fun Facts

Tonnage: 84,000

Length Overall: 984 Feet

Ship's Registry: The Bahamas

Important Dates

Keel Laid: October 31, 1996

Launch Date: April 12, 1997

Inaugural Cruise: July 30, 1998

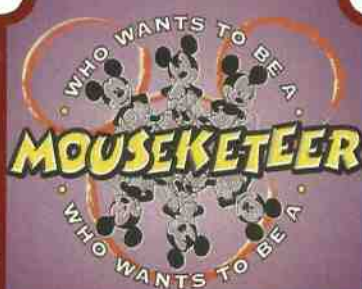
• The Magic was built by a process called Jumboisation (in 2 separate sections) in Italy at the Fincantieri Maghera Shipyard (stern) and the Fincantieri Ancona Shipyard (bow). The joint of the ship is just in front of Lumiere's.

• The anchor of the Disney Magic weighs 28,200 lbs (12,802.8kg) - the same weight as three elephants.

• Over 50 nationalities make up the 980 Crew Members on board.

• Sorcerer Mickey stands proudly 10 ft tall on the bow of the ship. There are other characters in the artwork around him.

• Goofy hangs 20 ft tall, painting the finishing touches on the stern.



GAME SHOW

Your chance to get into the world famous hot seat and win an exclusive prize in our version of the well known television game show.

D Lounge,
Deck 4, Midship,
7:30 p.m. & 10:15 p.m.

Don't Miss:

Wake up with Disney Junior

D Lounge, Deck 4, Midship - 8:30 a.m.

What happens when you experience unlimited fun with your favorite Disney Junior shows? You get an exciting dance party designed especially for preschoolers ages seven and under.

Mickey 200

Fathoms, Deck 3, Forward - 12:30 p.m.

Don't eat your vegetables... race them in this wild and wacky charge to the finish line. May the best veggie win! (Limited Availability)

Disco Legends

Fathoms, Deck 3, Forward - 10:45 p.m.

Put on your platform shoes and hit the dance floor as we catch a disco fever. Our '70s dance party will have you spinning like a disco ball.



TIME ZONE CHANGE

Remember to turn your clocks
BACK 1 HOUR upon retiring on
SATURDAY evening, or first
thing **SUNDAY** morning.



There are many new & exciting adventures to choose from on the picturesque islands of Grand Cayman and Cozumel! Be sure to visit the Port Adventures Desk, Deck 3, Midship for any questions.

DINNER MENU

Animator's Palate: Show Dinner
Carioca's: South American Dinner
Lumière's: French Dinner

DRINK OF THE DAY

High Tide (Alcoholic)
Lava Smoothie (Non Alcoholic)

IMPORTANT NUMBERS

Fire/Security: 7-3001
Medical Emergency: 7-3000
Health Center: 7-1923

FUN FOR ALL AGES HIGHLIGHTS



WAKE UP WITH DISNEY JUNIOR

D Lounge, Deck 4, Midship - 8:30 a.m.

What happens when you experience unlimited fun with your favorite Disney Junior shows? You get an exciting dance party designed especially for preschoolers ages seven and under.

DISNEY TRIVIA

Promenade Lounge, Deck 3, Aft - 9:00 a.m.

Navigate your way through another round of questions to test how much you really know about Disney.

CRUISIN' FOR TRIVIA

Promenade Lounge, Deck 3, Aft - 11:00 a.m.

Navigate your way through a round of questions testing your general knowledge.



JACK-JACK'S INCREDIBLE DIAPER DASH

Lobby Atrium, Deck 3, Midship - 11:30 a.m.

Calling all baby cruisers! The Disney Magic's babies take to the mat to see who's the fastest crawler of the seven seas! Register your baby 15 minutes prior to the big race.

MICKEY 200

Fathoms, Deck 3, Forward - 12:30 p.m.

Don't eat your vegetables... race them in this wild and wacky charge to the finish line. May the best veggie win! (Limited Availability)

DISNEY TUNES TRIVIA

Promenade Lounge, Deck 3, Aft - 1:45 p.m.

Determine just how well you know your Disney Tunes with your Cruise Staff.

SO YOU THINK YOU KNOW YOUR FAMILY?

D Lounge, Deck 4, Midship - 2:45 p.m.

This fun-filled family game show is always full of surprises. Find out how well you know, or don't know your family!

ADULT ACTIVITY HIGHLIGHTS



SENSES SPA FITNESS CLASSES & SEMINARS

Sunrise Stretch - Senses Spa Fitness Center - 7:30 a.m.

Body Sculpt Boot Camp - Senses Spa Fitness Center - 9:30 a.m.

Introduction to Acupuncture - Keys - 11:00 a.m.

Detox for Health & Weight Loss - Senses Spa & Salon - 11:15 a.m.

How to Increase Your Metabolism - Senses Spa & Salon - 2:00 p.m.

TASTING CLASSES

Wine Tasting (21+) - Keys - 12:30 p.m.

Mixology (21+) - Keys - 2:30 p.m.

Tequila & Margarita Tasting (21+) - O'Gills Pub - 4:00 p.m.

Cognac Tasting (21+) - Cove Cafe - 10:00 p.m.

Please make reservations for tastings at Guest Services for a nominal fee.

Tasting Seminars are only for Guests 21 and Older.

CLUB 18*21 - LUNCH

Lumiere's, Deck 3, Midship - 12:15 p.m.

CLUB 18*21 - XBOX KINECT

O'Gills Pub, Deck 3, Forward - 5:00 p.m.

CLUB 18*21 - MIXER

O'Gills Pub, Deck 3, Forward - 10:00 p.m.



ESPN DREAM TEAM DRAFT DAY - BASEBALL

O'Gills Pub, Deck 3, Forward - 3:00 p.m.

Play ball! Join the "Commissioner" and engage in this interactive fantasy baseball draft unlike anything you've ever seen! Can YOU draft the greatest baseball team of All-Time?



DISCO LEGENDS

Fathoms, Deck 3, Forward - 10:45 p.m.

Put on your platform shoes and hit the dance floor as we catch a disco fever. Our '70s dance party will have you spinning like a disco ball.

\$5,000 DIAMOND MEGA JACKPOT BINGO

Fathoms, Deck 3, Forward

Card Sales - 10:30 a.m.

Game Starts - 10:45 a.m.

Join us for 4 cash prize games and your chance to win a Diamond Pendant! If you cover your card in 46 numbers or less on the final game, \$5,000 could be yours! Everyone attending will also receive a voucher to collect a free Diamonds International charm bracelet!

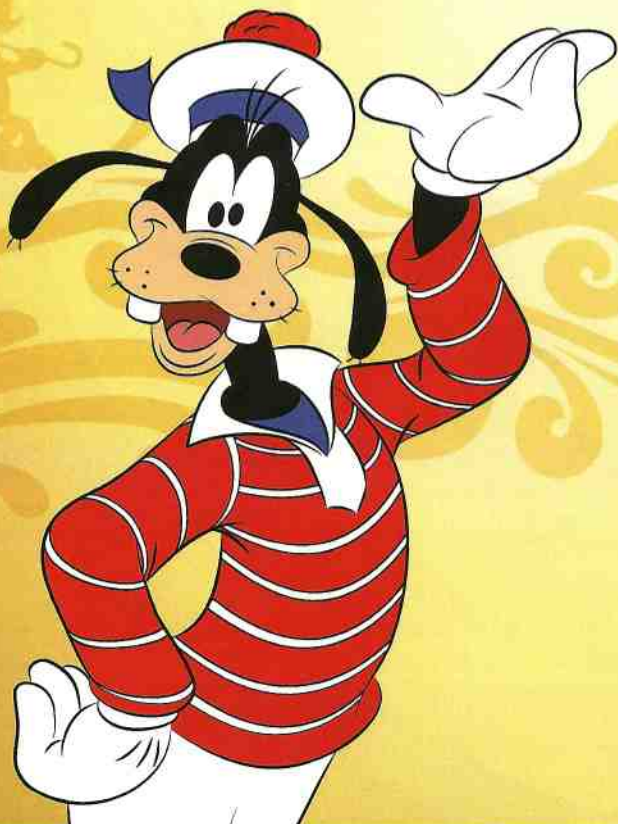
SENSES SPA BINGO

Fathoms, Deck 3, Forward

Card Sales - 3:30 p.m.

Game Starts - 3:45 p.m.

Four CASH prizes to be won! Plus great spa prizes that will pamper you, including a mini facial and massages all courtesy of the Senses Spa and Salon. Serenity now!



YOUTH ACTIVITIES HIGHLIGHTS

DINE & PLAY

A convenience for families dining at 8:15 p.m., our Youth Activities Counselors will be available at 9:15 p.m. at the entrance of Lumière's, Carioca's and Animator's Palate dining rooms to bring registered children to join the fun in the Oceaneer Club and Oceaneer Lab.



Deck 5, Aft (7-5864)

8:00 a.m. - 11:00 p.m.

Infants and Toddlers can enjoy toys and activities at It's a Small World Nursery. Reservations are first come, first served so please stop by!



Deck 5, Midship (7-1440)
(3-12 years old)

9:00 a.m. - 12:00 mid

MOUSEKETEER TRAINING

12:00 p.m.

Take part in training exercises to become an Official Mouse-keteer.

ALOHA LUAU

3:30 p.m.

It's party time, Hawaiian style! Come join us for a Luau experience and learn how to dance like Lilo & Stitch.



Deck 5, Midship (7-1445)
(3-12 years old)

9:00 a.m. - 12:00 mid

GOOFY FILES

9:15 a.m.

This fascinating activity takes you into the invisible world of forensics where you will discover different ways to identify the suspect of a crime.

SUPER SLOPPY SCIENCE

11:15 a.m. & 4:15 p.m.

Join Professor Make-O-Mess in some of the most extreme experiments you will ever see in the world of Super Sloppy Science!



Deck 2, Midship (7-5816)
(11-14 years old)

10:00 a.m. - 1:00 a.m.

THAT'S HILARIOUS

4:00 p.m.

Ever wanted to show off your comedy skills? Then be a part of the cast for the crazy improv show "That's Hilarious" and put on a live show for your friends.

GUITAR HERO CHALLENGE

7:30 p.m.

Test your gaming skills and compete to be the ultimate guitar hero.



Deck 11, Midship (7-18517)
(14-17 years old)

10:00 a.m. - 2:00 a.m.

ZOMBIFIED

1:00 p.m.

A big movie producer is looking for zombies to help him film the finale to his latest masterpiece, Zombified.

ULTIMATE SCAVENGER HUNT

4:00 p.m.

Which team will win in this wacky scavenger hunt?

BUENA VISTA THEATRE

Today's Movies

OC - Open Captioning

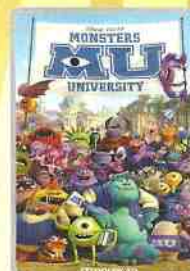
DOLBY 3D



8:30 a.m.
Duration:
1 hr 43 mins
Rating: G



10:45 a.m.
Duration:
1 hr 32 mins
Rating: PG



2:45 p.m.
Duration:
1 hr 43 mins
Rating: G

DOLBY 3D

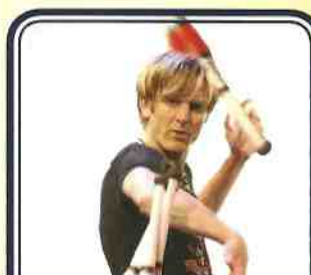
DOLBY 3D



5:15 p.m. & 8:00 p.m.
Duration: 2 hrs 10 mins
Rating: PG-13



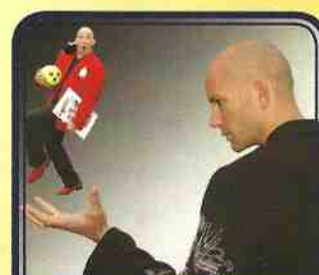
10:30 p.m.
Duration: 1 hr 32 mins
Rating: PG



FAMILY VARIETY

Featuring the
Comedy & Juggling
of Mike Price, as he
entertains you in this
fun filled family show.

*Fathoms,
Deck 3, Forward,
7:30 p.m.*



ADULT VARIETY

Featuring the
Magic & Illusion of
Chad Chesmark, as he
entertains you in this
adult exclusive show.

*Fathoms (18+),
Deck 3, Forward,
10:15 p.m.*

YOUTH ACTIVITIES OPEN HOUSE

Open House is an opportunity for all to come and participate in a variety of exciting activities and free time in the Oceaneer Club, Oceaneer Lab, Edge, Vibe, and It's a Small World Nursery throughout the cruise. During these times secured programming will still be offered in the other venues for those looking to check their children into care.

Vibe: 10:00 a.m. - 11:00 a.m.

Edge: 10:00 a.m. - 11:00 a.m.

Disney's Oceaneer Lab: 10:00 p.m. - 12:00 mid

Disney's Oceaneer Club: 9:00 a.m. - 10:15 a.m.

MORE TO ENJOY WHILE ONBOARD



PLAN YOUR NEXT DISNEY CRUISE LINE VACATION TODAY!

Book your next cruise today for the best availability and pricing. You'll save 10%, receive up to a \$200 onboard credit, and pay a reduced deposit! Visit the Future Cruise Sales Desk located Deck 4, Midship or call 7-2848.



DISNEY VACATION CLUB

Visit the Disney Vacation Club information desk and ask us about show times where you will learn how to turn every vacation into the vacation of a lifetime.



PORT & SHOPPING INFORMATION

Port & Shopping Show - 1:00pm - Buena Vista Theater, Deck 5 Aft. Learn about the incredible shopping in Grand Cayman & Cozumel. Everything will be covered from Diamonds to Tanzanite, T-shirts to Watches. FREE Charm Bracelet Voucher & Raffle to win a Diamond Heart Pendant! **Diamond, Gemstone & Watch Seminar** - 3:30 p.m. - Promenade Lounge, Deck 3 Aft. Learn what makes a diamond sparkle, the rarity of Ammolite, and why Alexandrite changes color! Voucher for a free pair of Tanzanite Stud Earrings and a raffle to win a Tanzanite Pendant for all in attendance!

ONBOARD AIRLINE CHECK IN

Stop by the Guest Services Desk, Deck 3, Midship to find out about enrolling in our Onboard Airline Check In Service.

SURF AT SEA

\$0.75 per minute or save money by buying blocks of time. \$27.50 for 50 minutes, \$40.00 for 100 minutes and \$75.00 for 250 minutes. Wireless information sheets are available at Guest Services, Deck 3, Midship and the Internet Cafe, Deck 3, Aft. Due to the technology involved and satellite connectivity, the onboard internet service will be noticeably slower than you may be accustomed to and might at times be interrupted or unavailable.

QUARTER MASTERS ARCADE

Where can you fly a fighter jet, save a Princess, race NASCAR's greatest and beat bad guys all before dinner? Quarter Masters is on Deck 9, Midship, where the champions play.



ENJOY YOUR DAY AT SEA!

Take the time to come and visit the beautifully reimagined Senses Spa & Salon and learn all about our variety of products and services!

Deck 9, Forward - Phone : 7-1465

SOFIA FIORI

Industry leaders in vivid colored diamonds, and more specifically Caribbean blue diamonds - one of the single most popular purchases at sea because it reminds everyone of the colors of the Breathtaking ocean!

Whitecaps, Deck 4, Forward

Sophia Fiori



GET THE PICTURE!

Get all your stateroom photos on a disc for one great price! Update and get all your printed photos too!

**Please note that photos are available for viewing on our interactive photo kiosks approximately five hours after being taken and are only available for purchase during this cruise.*



There are many new & exciting adventures to choose from on the picturesque islands of Grand Cayman and Cozumel! Take a dive to the ocean floor during the Atlantis Submarine or explore the ancient Mayan civilization at Tulum Ruins. We also offer a variety of dolphin programs for the entire family to enjoy.

Stop by the Port Adventures desk located on Deck 3, Midship, and our friendly team will be happy to assist.

SHOPPING

COMMEMORATIVE DISNEY MAGIC SOUVENIRS

Commemorate your voyage on the reimagined Disney Magic with Disney Cruise Line® merchandise featuring the new Disney Magic logo available at Mickey's Mainsail and Whitecaps, Deck 4 Forward.

DISNEY STORYTELLERS SERIES AT THE VISTA GALLERY

With artists who have been instrumental in creating the worlds of popular Disney films, stop by the Vista Gallery today for the Disney Storytellers Series and admire the unique interpretations of your favorite Disney characters by these talented artists. Deck 4, Midship.

SWIMMING ESSENTIALS AT QUACKS

Before jumping into the pool, stop by new merchandise location Quacks where you'll find swimming essentials such as Disney Cruise Line® bathing suits and towels, plus a new shirt design featuring the new Disney Magic thrill slide, AquaDunk. Deck 9, Midship.

RED CARPET SOPHIA FIORI DIAMOND UNVEILING

Drop in at Whitecaps today to meet the diamond specialist with Sophia Fiori. Whether you are a Hollywood celebrity or a full time Mom, every woman experiences a Red Carpet Moment when putting on Sophia Fiori Jewelry so treat yourself, you deserve it! Deck 4, Forward.

CHAMILIA EXCLUSIVE!

Remember your Disney Cruise forever! Disney Cruise Line charms, available in Whitecaps, Deck 4, Midship.

UNIQUE SEA BAGS MADE FROM RECYCLED SAILS

Crafted in Portland, Maine, from real sails collected from sailing communities all over the world, breathing new life into recently retired sails, our totes embody the magic of the sea and bring to every Sea Bags owner a bit of the mystery surrounding the specific sail used in the making of their tote. Visit Whitecaps today to view the entire collection. Deck 4, Forward.

IMPORTANT INFORMATION

Security Notice

All Guests (including Children) who wish to disembark or embark the ship are required to present their Key to the World card at the gangway. A photo ID is also required for those Guests who are 18 years of age or older. Guests under the age of 18 are required to have a parent, guardian or other responsible adult sign an authorization form at the Guest Service Desk if they wish to go ashore unaccompanied or with any adult from another stateroom. Authorization forms are available at the gangways and Guest Services.

Cold and Flu Reminder

Please wash hands frequently and thoroughly, particularly before meals. Contact the Health Center by dialing 7-1923, should anyone in your party become ill.

Inclement Weather

For the safety of all Guests, outdoor events may be changed due to unforeseen weather conditions.

Corridor Quiet Hours

As a courtesy to all our Guests, please recognize quiet hallway hours from 10:00 p.m. til 8:00 a.m.

Environmental Message

With Disney's commitment to the Environment please refrain from throwing anything over the Ship's side. Thank you.

No Reserved Seats Policy

As a courtesy to all Guests we kindly advise that the saving of seats is not permitted in the Walt Disney Theatre, and the saving of the sun loungers is not permitted on Deck 9 and 10. Items left unattended will be returned to lost and found at Guest Services, Deck 3, Midship.

Smoking

For the comfort of our Guests the following open deck areas on the Starboard Side are designated as Smoking areas: Deck 4, Starboard side from 6:00 p.m. to 6:00 a.m. ONLY, Deck 9, Forward Starboard side at Quiet Cove and Deck 10, Starboard side. Smoking is prohibited in all Guest staterooms. Guests found smoking in their staterooms will be charged a \$250 stateroom recovery fee. Electronic cigarettes may only be used in designated smoking areas.

Sunscreen Advisory

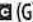
Don't forget to apply sunscreen and insect repellent when going ashore.

Walt Disney Theatre

Theatrical performances may use artificial fog, strobe lights, pyrotechnics and other special effects. For the safety of our performers and the comfort of those around you, the use of any photography or video recording device or any electronic equipment is prohibited.

Verandah Safety

Please do not leave any combustible materials on your balcony when not present in your stateroom for safety reasons.

Morning	8:30	8:45	9:00	9:15	9:30	9:45	10:00	10:15	10:30	10:45	11:00	11:15	11:30	11:45	12:00	12:15	12:30	12:45	1:00	1:15	1:30
FUNNEL VISION	Wreck-It Ralph (PG) Funnel Vision							Brave (PG) Funnel Vision							Wreck-It Ralph (PG) Funnel Vision						
BUENA VISTA THEATRE	Monsters University  (G) Duration: 1 Hour 43 Minutes							Planes (PG) Duration: 1 Hour 32 Minutes							Port and Shopping Talk Buena Vista Theatre						
CHARACTER	Princess Gathering Lobby Atrium							Jake Dk 4, Mid							Jake Dk 4, Mid						
FUN FOR ALL AGES	 Disney Junior D Lounge							Disney Trivia Promenade Lounge							Disney Animation Class Animator's Palate						
	Family Crafts: 3D Crafts D Lounge							Bingo Pre Sales							\$5,000 Diamond Mega Jackpot Fathoms						
	Disney Vacation Club Members Celebration Fathoms							Disney Charades D Lounge							Cruisin' for Trivia Promenade Lounge						
ADULTS	Friends of Bill W. Animator's Palate							Art of The Theme Show Tour Pre-Book at Guest Services							Introduction to Acupuncture Keys						
	50's and 60's Music Trivia O'Gills Pub							Club 18*21 - Lunch Lumiere's							Singles' Lunch Lumiere's						
VIBE 14-17 YEARS OLD								Youth Activities Open House							Coffee Break						
EDGE 11-14 YEARS OLD								Youth Activities Open House							Sports Deck Fun						
OCEANEER LAB 3-12 YEARS OLD								Goofy Files							Magic Show						
OCEANEER CLUB 3-12 YEARS OLD								Stitch's Great Adventure							Super Sloppy Science						
	Youth Activities Open House							Puzzle Playtime							Mouseketeer Training						
															Lunch						
Afternoon	1:45	2:00	2:15	2:30	2:45	3:00	3:15	3:30	3:45	4:00	4:15	4:30	4:45	5:00	5:15	5:30	5:45	6:00	6:15	6:30	6:45
FUNNEL VISION	Tangled (PG) Funnel Vision							Cinderella 3: A Twist in Time (G) Funnel Vision							Mary Poppins (G) Funnel Vision						
BUENA VISTA THEATRE								Monsters University  (G) Duration: 1 Hour 43 Minutes							Iron Man 3  (PG-13) Duration: 2 Hours 10 Minutes						
CHARACTER	Donald Gazebo, Dk 9							Pluto Gazebo, Dk 9							Mickey Gazebo, Dk 9						
FUN FOR ALL AGES	Disney Tunes Trivia Promenade Lounge							So You Think You Know Your Family? D Lounge							Senses Spa Fathoms						
	The Royal Ball Disney's Oceaneer Club							Bingo Pre Sales							Playhouse D Lounge D Lounge						
	Crafts - Door Hangars Promenade Lounge							Diamond, Gemstone & Watch Seminar Promenade Lounge							Crafts - Tote Bags D Lounge						
ADULTS	How to Increase Your Metabolism Senses Spa & Salon							ESPN Dream Team Draft Day - Baseball O'Gills Pub							Art of The Theme Show Tour Pre-Book at Guest Services						
	Disney Animation Class Animator's Palate							Margarita Tasting (21+) O'Gills Pub							Club 18*21 - Xbox Kinect O'Gills Pub						
VIBE 14-17 YEARS OLD	Zombified							Crowning the Couch Potato							Ultimate Scavenger Hunt						
EDGE 11-14 YEARS OLD	Ice Cream Social							Stop The Boat							Video Scavenger Hunt						
OCEANEER LAB 3-12 YEARS OLD								Anyone Can Cook							Super Sloppy Science						
OCEANEER CLUB 3-12 YEARS OLD								Youth Activities Open House							Animation Antics						
	The Royal Ball							Aloha Luau							Little Einstein's Adventure						
															Dinner						
Evening	7:00	7:15	7:30	7:45	8:00	8:15	8:30	8:45	9:00	9:15	9:30	9:45	10:00	10:15	10:30	10:45	11:00	11:15	11:30	11:45	12:00
FUNNEL VISION	Mary Poppins (G) Funnel Vision							Cars (G) Funnel Vision							Remember the Titans (PG) Funnel Vision						
BUENA VISTA THEATRE								Iron Man 3  (PG-13) Duration: 2 Hours 10 Minutes							Planes  (PG) Duration: 1 Hour 32 Minutes						
CHARACTER	Minnie Dk 5, Mid							Daisy Dk 5, Mid							Donald Dk 5, Mid						
FUN FOR ALL AGES								Mickey Dk 5, Mid							Minnie Lobby Atrium (P)						
															Mickey Lobby Atrium (P)						
															Belle Lobby Atrium (P)						
ADULTS															Club D Dance Party D Lounge						
															Live Music with Dreem Promenade Lounge						
															Live Music with Dreem Promenade Lounge						
ADULTS															Variety: Chad Chesmark Fathoms						
															70's Remix with Guest DJ Gary Braner Fathoms						
VIBE 14-17 YEARS OLD	Youth Activities Open House							Smoothie Hour							Anyone Can Cook: Pizza						
EDGE 11-14 YEARS OLD	Sports Deck Fun							Guitar Hero Challenge							Boys and Girls Chill						
OCEANEER LAB 3-12 YEARS OLD								Piston Cup Challenge							Who Wants To Be A Mouseketeer						
OCEANEER CLUB 3-12 YEARS OLD								Marvel Avengers Academy							Heffalump Hunting						
															Marshmallow Olympics						
															Youth Activities Open House						
															Piston Cup Challenge						
															Camp Out						

Symbol for activities that will be repeated during the cruise



FOLD

Fold along the dotted lines and take me with you so you don't miss any of the fun!

FOLD

UPPER SPOTLIGHT STOPS
DOWN SPOTLIGHT STOPS
UPPER SPOTLIGHT STOPS
DOWN SPOTLIGHT STOPS

UPPER SPOTLIGHT STOPS
DOWN SPOTLIGHT STOPS

UPPER SPOTLIGHT STOPS
DOWN SPOTLIGHT STOPS

UPPER SPOTLIGHT STOPS
DOWN SPOTLIGHT STOPS

UPPER SPOTLIGHT STOPS
DOWN SPOTLIGHT STOPS

SATURDAY, NOVEMBER 2, 2013 - DAY AT SEA

BUENA VISTA THEATRE

CC - Open Captioning

DOLBY 3D

DOLBY 3D

DOLBY 3D



8:30 a.m. Duration: 1 hr 43 mins Rating: G	10:45 a.m. Duration: 1 hr 32 mins Rating: PG	2:45 p.m. Duration: 1 hr 43 mins Rating: G	5:15 p.m. & 8:00 p.m. Duration: 2 hrs 10 mins Rating: PG-13	10:30 p.m. Duration: 1 hr 32 mins Rating: PG
---	---	---	---	---

Character Appearances

PRINCESS GATHERING

Lobby Atrium - 9:00 a.m.

CAPTAIN AMERICA

Preludes - 10:15 a.m.,
5:00 p.m. & 6:00 p.m.

JAKE - THE NEVERLAND PIRATE

Deck 4, Midship
11:00 a.m. & 12:00 p.m.

CAPTAIN HOOK

Deck 4, Midship - 11:30 a.m.

CHIP & DALE

Gazebo, Dk 9 - 1:00 p.m.

DAISY DUCK

Gazebo, Dk 9 - 1:30 p.m.
Deck 5, Midship
4:30 p.m. & 9:15 p.m.

DONALD DUCK

Gazebo, Dk 9 - 2:00 p.m.
Deck 5, Midship
5:00 p.m. & 9:45 p.m.

PLUTO

Gazebo, Dk 9 - 2:30 p.m.

GOOFY

Gazebo, Dk 9 - 3:00 p.m.

MICKEY MOUSE

Gazebo, Dk 9 - 3:30 p.m.
Deck 5, Midship
6:00 p.m. & 7:45 p.m.
Lobby Atrium (P) - 10:00 p.m.

MINNIE MOUSE

Gazebo, Dk 9 - 4:00 p.m.
Deck 5, Midship
5:30 p.m. & 7:15 p.m.
Lobby Atrium (P) - 9:30 p.m.

PRINCESS TIANA

Deck 5, Midship - 10:15 p.m.

BELLE

Lobby Atrium (P) - 10:30 p.m.

Don't forget your Camera to capture those Magical Moments!

Check here each day for Character appearances.

For detailed Character appearance information see the Character Information Board in the Lobby Atrium.

Meet-and-Greets will be advertised for the length of time the line will be open. To avoid disappointment, please meet at start time of appearances.

YOUTH ACTIVITIES THEMED EXPERIENCES

CLUBHOUSE SERIES
focuses on movement and features content which appeals to younger children.

STORYBOOK SERIES
is designed with a strong connection to the Disney classic stories.

JUMP UP! SERIES
includes large ground games & movement-oriented activities.

CREATE & INVENT SERIES
will have a tactile focus allowing children to create and admire their work.

IN THE SPOTLIGHT SERIES
focuses on children's stage presence with lots of activities and enthusiasm.

WOLVES IN THE WOODS SERIES
are less active, but will challenge children with problem/solutions-based activities.

YOUTH ACTIVITIES OPEN HOUSE

Activities for families, adults and children of all ages to enjoy together.

SHIP DIRECTORY

YOUTH ACTIVITIES

DISNEY'S OCEANEER CLUB	DECK 5, MID	9:00 AM - 12:00 MID
DISNEY'S OCEANEER LAB	DECK 5, MID	9:00 AM - 12:00 MID
EDGE	DECK 2, MID	10:00 AM - 1:00 AM
IT'S A SMALL WORLD NURSERY	DECK 5, AFT	8:00 AM - 11:00 PM
VIBE	DECK 11, MID	10:00 AM - 2:00 AM

POOLS

*Children under 12 years of age must have adult supervision in all pools.

AQUADUNK	DECK 10, MID	9:00 AM - 10:00 PM
AQUALAB	DECK 9, AFT	8:30 AM - 9:00 PM
GOOFY'S POOL	DECK 9, MID	9:00 AM - 6:00 PM
		8:00 PM - 10:00 PM
NEPHEWS' SPLASH ZONE	DECK 9, AFT	8:30 AM - 6:00 PM
QUIET COVE POOL	DECK 9, FWD	6:00 A.M. - 12:00 MID
TWIST 'N' SPOUT	DECK 9, AFT	8:30 AM - 9:00 PM

RECREATION

PORT ADVENTURES DESK	DECK 3, MID	9:00 AM - 5:00 PM
		7:00 PM - 8:30 PM
SENSES FITNESS CENTER	DECK 9, FWD	6:00 AM - 10:00 PM
WIDE WORLD OF SPORTS DECK	DECK 10, FWD	24 HOURS

GENERAL INFORMATION

BUENA VISTA THEATRE	DECK 5, AFT	SHOWTIMES
DISNEY VACATION CLUB DESK	DECK 4, MID	9:00 AM - 11:00 AM
		2:30 PM - 10:00 PM
FUTURE CRUISE SALES DESK	DECK 4, MID	9:30 AM - 12:00 PM
		3:00 PM - 6:00 PM
		7:30 PM - 8:30 PM
FUNNEL VISION	DECK 9, MID	SHOWTIMES
GUEST SERVICES	DECK 3, MID	24 HOURS
MEDICAL HEALTH CENTER	DECK 1, FWD	9:30 AM - 11:00 AM
		4:30 PM - 7:00 PM
PORT & SHOPPING DESK	DECK 3, MID	7:30 PM - 8:30 PM
PRELUDES	DECK 4, FWD	5:30 PM - 8:30 PM
QUARTER MASTERS (ARCADE)	DECK 9, MID	24 HOURS
SENSES SPA AND SALON	DECK 9, FWD	8:00 AM - 10:00 PM
SHUTTERS PHOTO GALLERY	DECK 4, AFT	10:00 AM - 12:00 PM
		5:00 PM - 11:00 PM
WALT DISNEY THEATRE	DECK 4, FWD	SHOWTIMES

SHOPPING

MICKEY'S MAINSAIL	DECK 4, FWD	9:30 AM - 11:00 PM
QUACKS	DECK 9, MID	10:00 AM - 4:00 PM
SEA TREASURES	DECK 3, FWD	2:00 PM - 11:00 PM
VISTA GALLERY	DECK 4, MID	11:00 AM - 2:00 PM
		4:00 PM - 10:00 PM
WHITECAPS	DECK 4, FWD	9:30 AM - 11:00 PM

IMPORTANT NUMBERS

Fire/Security: 7-3001
Medical EMERGENCY: 7-3000
Health Center: 7-1923

DINNER MENU	Animator's Palate: Show Dinner	DRINK OF THE DAY	High Tide (Alcoholic)	WEATHER FORECAST	Saturday: Partly Sunny High: 81°F/27°C
	Carioca's: South American Dinner		Lava Smoothie (Non - Alcoholic)		Sunday: Cloudy High: 81°F/27°C
	Lumière's: French Dinner				

Dining Times: 5:45pm & 8:15pm
Evening Attire: Optional Dress Up

DINING & LOUNGES

BREAKFAST

CABANAS	DECK 9, AFT	7:30 AM - 11:30 AM
DAISY'S DE-LITES	DECK 9, AFT	7:00 AM - 9:00 AM
CARIOCA'S	DECK 3, AFT	8:30 AM - 10:00 AM
LUMIÈRE'S (À-LA CARTE)	DECK 3, MID	8:00 AM - 9:30 AM

LUNCH

CABANAS	DECK 9, AFT	11:30 AM - 2:00 PM
DAISY'S DE-LITES	DECK 9, AFT	11:00 AM - 6:00 PM
LUMIÈRE'S	DECK 3, MID	12:00 PM - 1:30 PM
PETE'S BOILER BITES	DECK 9, AFT	11:00 AM - 6:00 PM
PINOCCHIO'S PIZZERIA	DECK 9, MID	11:00 AM - 6:00 PM

DINNER

ANIMATOR'S PALATE	DECK 4, AFT	5:45 PM & 8:15 PM
CABANAS TABLE SERVICE	DECK 9, AFT	6:30 PM - 8:30 PM
CARIOCA'S	DECK 3, AFT	5:45 PM & 8:15 PM
LUMIÈRE'S	DECK 3, MID	5:45 PM & 8:15 PM
PALO (FOR RESERVATIONS CALL 7-8843)	DECK 10, AFT	6:00 PM - 8:30 PM
PETE'S BOILER BITES	DECK 9, AFT	6:00 PM - 10:00 PM

LATE NIGHT SNACKS

O'GILLS PUB	DECK 3, FWD	10:45 PM - 11:45 PM
PINOCCHIO'S PIZZERIA	DECK 9, MID	9:00 PM - 12:00 MID
PROMENADE LOUNGE	DECK 3, AFT	10:45 PM - 11:45 PM

ADDED FEATURES

EYE SCREAM	DECK 9, AFT	11:00 AM - 11:00 PM
FROZONE TREATS	DECK 9, AFT	10:30 AM - 11:00 PM
BEVERAGE STATION	DECK 9, AFT	24 HOURS
ROOM SERVICE	DIAL 7-4330	24 HOURS

ENTERTAINMENT - LOUNGES - BARS

Adults must be 21 and older to consume alcoholic beverages.

AFTER HOURS	DECK 3, FWD	(AFTER 9:00 PM, ADULTS ONLY)
COVE CAFE (18+)	DECK 9, MID	7:00 AM - 12:00 MID
FATHOMS (18+)	DECK 3, FWD	7:00 PM - 2:00 AM
INTERNET CAFE	DECK 3, AFT	24 HOURS
KEYS (18+)	DECK 3, FWD	5:30 PM - 1:00 AM
O'GILLS PUB (18+)	DECK 3, FWD	12:00 PM - 1:00 AM
PRELUDES	DECK 4, FWD	5:30 PM - 8:30 PM
PROMENADE LOUNGE	DECK 3, AFT	9:00 AM - 12:00 MID
PINOCCHIO'S PIZZERIA	DECK 9, MID	9:30 AM - 12:00 MID
SIGNALS (18+)	DECK 9, FWD	9:30 AM - 11:00 PM
D LOUNGE	DECK 4, MID	SHOWTIMES

Public Health Advisory: Consuming raw or undercooked meats, poultry, seafood, shellfish, or eggs may increase your risk for foodborne illness, especially if you have certain medical condition.



PRINCESS GATHERING

Don't miss your chance to see this Royal gathering today in the Lobby Atrium and don't forget your camera to capture those magical moments.

9:00 a.m.