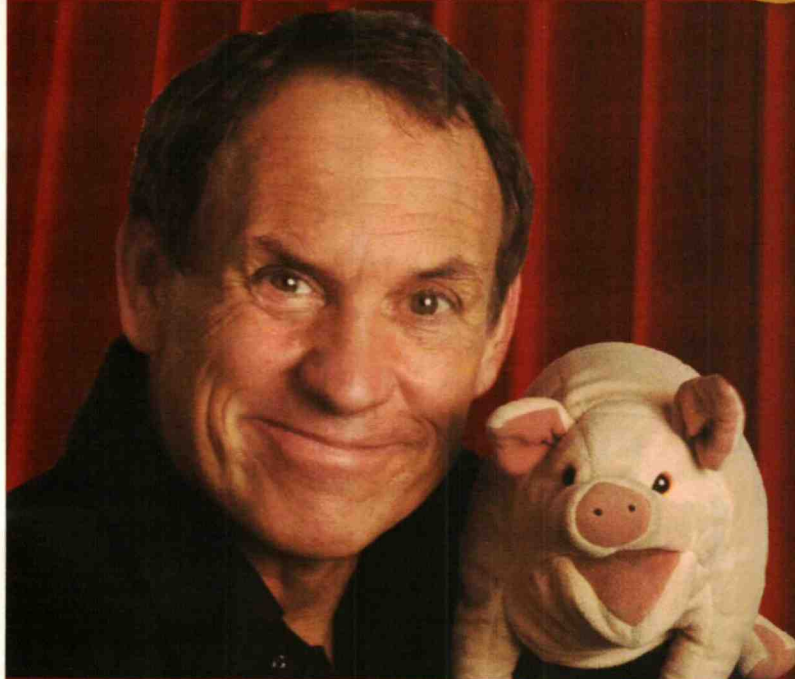


# PERSONAL NAVIGATOR



WEDNESDAY, OCTOBER 30, 2013

Sunrise: 6:49 a.m. Sunset: 6:13 p.m.  
 Evening Attire: Pirate or Cruise Casual  
 All Ashore: 8:30 a.m. All Aboard: 5:30 p.m.  
 PLEASE STAY ON SHIPS TIME WHILST IN PORT TODAY  
 Wednesday: Partly Cloudy High: 84°F/29°C  
 Thursday: Sunny High: 84°F/29°C  
 COZUMEL, MEXICO



## The Comedy and Ventriloquism of Taylor Mason

WALT DISNEY THEATRE

Deck 3 & 4 Forward  
 6:15 p.m. & 8:30 p.m.

As a courtesy to all Guests, we kindly advise that the saving of seats is **not** permitted in the Walt Disney Theatre.

Assistance available at the entrance to the Walt Disney Theatre 30 minutes prior to show time.

### Cozumel Port Information

Cozumel, Mexico is an invigorating port of call on a Caribbean Cruise vacation. An island and a city off the eastern coast of Mexico's Yucatan Peninsula, Cozumel is known for some of the world's healthiest coral reefs and rarest natural recreation. This island in the Caribbean Sea is an extremely popular destination for scuba-diving and snorkeling enthusiasts.

The Mayans considered the site sacred to the Moon Goddess, Ixchel, and women would make regular pilgrimages there to pay tribute and to wish for fertility in return.

The arrival of the Spanish in 1518 brought disease and devastation, nearly wiping out the Mayans and leaving the island all but deserted by 1570. It was an outpost for pirates until 1848, when warfare in the Yucatan drove refugees to settle there. A boom in visitors to the island came after 1959, when the famed Jacques Cousteau publicized Cozumel's coral reefs as among the best in the world for scuba diving.

Today, Guests can let their imaginations take flight in the island the Mayans named Cozumel—the "Island of the Swallows"—so long ago.

#### DOCKING

The ship will dock at the Punta Langosta pier. The pier is located downtown, with walk off access right into the city of Cozumel.

#### IMPORTANT INFORMATION

All Ashore: 8:30 a.m.

All Aboard: 5:30 p.m.

PLEASE STAY ON SHIPS TIME WHILST IN PORT TODAY

#### DINNER MENU

Animator's Palate: Pirates Menu  
 Enchanted Garden: Pirates Menu  
 Royal Court: Pirates Menu

#### DRINK OF THE DAY

Sunken Treasure (Alcoholic)  
 Princess Delight (Non Alcoholic)

#### IMPORTANT NUMBERS

Fire/Security: 7-3001  
 Medical Emergency: 7-3000  
 Health Center: 7-1923



It's a Pirate Celebration, me hearties!  
 Come experience all the pirate fun alongside Captain Mickey Mouse and his famous Pirate Crew.

(Weather Permitting)

7:45 p.m.

Deck 11 & 12 marks the spot



Buccaneer Blast

Fireworks

10:30 p.m.

Deck 11 & 12

marks the spot

(Weather Permitting)

### Don't Miss:

#### Pirate Trivia

D Lounge, Deck 4, Midship - 3:15 p.m.

Test the depths of your pirate knowledge with your Cruise Staff at this swashbuckling trivia event.

#### Pirate Palooza

D Lounge, Deck 4, Midship - 5:00 p.m.

Yo ho, matey's! Jump aboard, junior pirates, and get ready to set sail for fun and games at our Pirate Palooza!

#### Krazy Karaoke

The Tube, Deck 4, Aft - 11:00 p.m.

Take the stage, grab a microphone and sing your favorite tunes with your Club Host and Cruise Staff DJ.

#### TIME ZONE CHANGE

Remember to turn your clocks FORWARD 1 HOUR upon retiring on WEDNESDAY evening or first thing THURSDAY morning.



Disney Cruise Line

PORT ADVENTURES

Please check your tour tickets for meeting times and locations. Visit the Port Adventures Desk, Deck 5, Midship for any questions.



# FUN FOR ALL AGES HIGHLIGHTS

## PIRATE TRIVIA

*D Lounge, Deck 4, Midship - 3:15 p.m.*

Test the depths of your pirate knowledge with your Cruise Staff at this swashbuckling trivia event.



## CHIP-IT GOLF (12+)

*Lobby Atrium, Deck 3, Midship - 3:45 p.m.*

It's par for the course for our Guests 12 and older to compete on our special "greens" in this fun tournament.

## PIRATE PALOOZA

*D Lounge, Deck 4, Midship - 5:00 p.m.*

Yo ho, mateys! Jump aboard, junior pirates, and get ready to set sail for fun and games at our Pirate Palooza!



## A PIRATE'S LIFE FOR ME

*D Lounge, Deck 4, Midship - 6:30 p.m. & 9:30 p.m.*

Calling all Pirates, we be! If ye have an adventurous spirit or pirate savvy, come spin the "Wheel of Destiny" for a treasure trove of fun be ripe for the takin' in this action packed pirate game show.



## MICKEY'S PIRATES IN THE CARIBBEAN

*Deck Stage, Deck 11, Midship, Deck 11 - 7:45 p.m.*

It's a Pirate Celebration, me hearties! Come experience all the pirate fun alongside Captain Mickey Mouse and his famous Pirate Crew. Play, dance and acquire all the pirate skills needed to become an official member of Mickey's Pirate Crew! (Weather Permitting)

## FAMILY SUPERSTAR KARAOKE

*D Lounge, Deck 4, Midship - 8:30 p.m.*

Join your Cruise Staff in D Lounge tonight and sing along to your favorite song - fun for everyone.



# ADULT ACTIVITY HIGHLIGHTS



## SENSES SPA FITNESS CLASSES & SEMINARS

*Sunrise Stretch - Donald's Pool - 7:00 a.m.*

*Fab Abs - Donald's Pool - 7:30 a.m.; Senses Fitness Center - 5:00 p.m.*

*Body Sculpt Boot Camp (Nom. Fee) - Senses Fitness Center - 8:00 a.m.*

*Pilates - Senses Fitness Center - 4:00 p.m.*



## CLUB 18\*21 - MIXER

*Currents, Deck 13, Forward - 10:00 p.m.*

Club 18\*21 is an exclusive gathering for young adult Guests. Come meet some of your fellow cruisers and share stories of your cruise thus far, before we head up on deck for Buccaneer Blast and Club Pirate.

## CLUB 18\*21 - MIXER

*The Tube, Deck 4, Aft - 11:00 p.m.*

## LIVE MUSIC WITH DARIA & ROBERTO

*La Piazza, Deck 4, Aft - 7:30 p.m. & 9:30 p.m.*

Join Daria and Roberto as they play live for your listening pleasure.

## LIVE GUITAR WITH TONY DELANEY

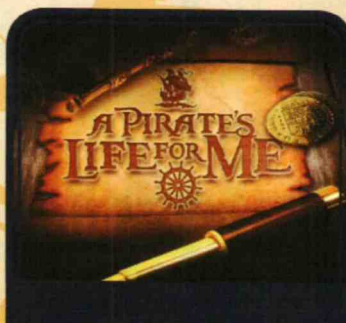
*Currents, Deck 13, Forward - 7:00 p.m., 9:15 p.m. & 11:30 p.m.*

Join Tony Delaney as he plays live guitar for your listening pleasure.

## GOING UNDERGROUND WITH GUEST DJ JON BLAK

*The Tube, Deck 4, Aft - 12:00 mid*

Hold on as we take you underground with our Guest DJ Jon Blak.



Calling all Pirates, we be! If ye have an adventurous spirit or pirate savvy, come spin the "Wheel of Destiny," for a treasure trove of fun be ripe for the takin' in this action packed pirate game show.

*D Lounge,  
Deck 4, Midship,  
6:30 & 9:30 p.m.*



Take to the stage, grab a microphone and sing your favorite song with your Club Host, Robin, and Cruise Staff DJ.

*The Tube (18+),  
Deck 4, Aft,  
11:00 p.m.*



# YOUTH ACTIVITY HIGHLIGHTS

## DINE & PLAY

A convenience for families dining at 8:15 p.m., our Youth Activities Counselors will be available at 9:15 p.m. at the entrance of Royal Court, Enchanted Garden and Animator's Palate dining rooms to bring registered children to join the fun in the Youth Activity areas.



*Deck 5, Midship (7-1440)*  
(3-12 years old) 8:00 a.m. - 10:30 p.m.

## LITTLE EINSTEIN'S ADVENTURE

2:30 p.m.

Your junior cruisers will have the time of their lives with this program inspired by their favorite show with fun activities guaranteed to make them feel like a little genius!

## SO YOU WANT TO BE A PIRATE?

8:45 p.m.

Have you learned about life on the high seas? Do you have what it takes to be a pirate? Join Captain Hook and friends to find out!



*Deck 5, Midship (7-1445)*  
(3-12 years old) 9:00 a.m. - 12:00 mid

## SUPER SLOPPY SCIENCE

12:45 p.m.

Join Professor Make-O-Mess in some of the most extreme experiments you will ever see in the world of Super Sloppy Science!

## PIRATES OF THE CARIBBEAN: TIDES OF FORTUNE

9:30 p.m.

Inspired from the Pirates of the Caribbean saga, during this interactive computer game, cruisers in the Disney's Oceaneer Lab get a chance to sail the seven seas!



*Deck 13, Midship (7-9743)*  
(11-14 years old) 9:00 a.m. - 1:00 a.m.

## CROWNING OF THE COUCH POTATO

6:30 p.m.

Do you think you know your movies, TV and commercials? Well it's time to test your knowledge on all the recent releases.

## A PIRATE'S LIFE FOR ME

11:45 p.m.

Yo ho, yo ho, a Pirate's Life for Me! Aarrgh me mateys! Put your knowledge to the test!



*Entrance on Deck 4, Forward (7-9418)*  
(14-17 years old) 11:00 a.m. - 2:00 a.m.

## THAT'S HILARIOUS

7:15 p.m.

Ever wanted to show off your comedy skills? Then be a part of the cast for the crazy improv show "That's Hilarious" and put on a live show for your friends.

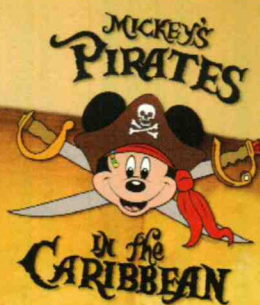
## YOUTH ACTIVITIES OPEN HOUSE

Open House is an opportunity for all to come and participate in a variety of exciting activities and free time in the Oceaneer Club, Oceaneer Lab, It's A Small World Nursery, Vibe and Edge throughout the cruise. During these times secured programming will still be offered in the other venue for those looking to check their children into care.

Disney's Oceaneer Lab: 9:00 a.m. - 11:00 a.m.

Vibe: 11:00 a.m. - 12:00 p.m. & 6:30 p.m. - 8:30 p.m.

Edge: 9:00 a.m. - 10:00 a.m. & 5:00 p.m. - 6:30 p.m.



7:45 p.m.

Pirate Games start at 7:30 p.m.  
Deck 11 & 12 Mark the Spot

It's a Pirate Celebration, me hearties!  
Come experience all the pirate fun alongside Captain Mickey Mouse and his famous Pirate Crew.  
(Weather Permitting)



## Buccaneer Blast Fireworks

What's a pirate party without some fireworks to remind the other ships who be ruling the oceans blue?

10:30 pm

Deck 11 & 12 Mark the Spot

Fireworks will be on display Starboard side  
Seen best from Deck 11, center pool area, and on Deck 12.  
(Weather Permitting)

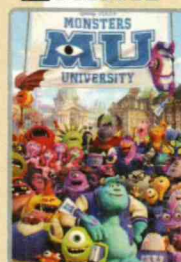
## Club Pirate

If ye be a fan of Pirates of the Caribbean, tis time to revel in the night at the hottest dance club in all the seven seas with Guest DJ Jon Blak.  
(Immediately following Buccaneer Blast) (Weather Permitting)

# BUENA VISTA THEATRE

## Today's Movies

DOLBY 3D



12:00 p.m.  
Duration: 1 hr 43 mins  
Rating: G

DOLBY 3D



2:00 p.m.  
Duration: 2 hrs 10 mins  
Rating: PG-13



5:45 p.m. & 8:30 p.m.  
Duration: 1 hr 43 mins  
Rating: G

DOLBY 3D



10:45 p.m.  
Duration: 1 hr 32 mins  
Rating: PG



# MORE TO ENJOY WHILE ONBOARD



## PLAN YOUR NEXT CRUISE

Can't wait for your next Disney Cruise Line vacation? Don't wait to book your next cruise! You'll save 10%, receive up to a \$200 onboard credit, and pay a reduced deposit when you book today. Just visit the Future Cruise Sales Desk, Deck 4, Midship, or call 7-2848 for more information.



## PORT AND SHOPPING INFORMATION

Join Marissa & Johan at Diamonds International at the end of the pier and find out what makes Cozumel the most famous shopping port in the Western Caribbean. Don't miss Del Sol & Cariloha for all your Cozumel souvenirs! Make sure to pick up your Map & Shopping Coupons on the Gangway.



## ADVENTURES BY DISNEY

Join us for a special presentation tomorrow to learn what traveling with Adventures by Disney is all about. See our Adventure Guide on Deck 4, Midship.

## ONBOARD AIRLINE CHECK IN

If you would like to have your boarding passes printed for you onboard and have your luggage taken to the airport for you, register by midnight tonight. If you have a Disney Cruise Line airport transfer to Orlando International Airport and fly with one of the participating airlines, stop at Guest Services, Deck 3, Midship to register.

## WIRELESS INTERNET: KEEPING YOU CONNECTED AT SEA

\$0.75 per minute, or save money by buying blocks of time. \$55.00 for 100 minutes, \$100.00 for 250 minutes and \$150.00 for 500 minutes. Wireless information sheets are available at Guest Services, Deck 3, Midship.

*Please note: Due to satellite connectivity, onboard internet service will be noticeably slower than you may be accustomed to and may at times be interrupted or unavailable.*

## FREE ON DEMAND TV

Watch Disney movies, Hollywood features, ABC Shows, and even captioned content, plus much more "On Demand" for FREE in the comfort of your stateroom! Bookmark your movie and come back to watch it later. Press MENU on your stateroom television remote control, and follow the prompts.



**SENSES**  
SPA & SALON

## SPA TASTER SPECIAL

### TWILIGHT TREATMENTS

- Wellbeing Massage
- Skin Bliss Facial
- Slimming Treatment
- Spa Taster

Choose any 50 min. service  
for only \$99



Hola! We have arrived at the island paradise of Cozumel just off the coast of Mexico. This is the perfect day to enjoy the beach on Cozumel or take a tour to visit the ancient Mayan ruins of Tulum on the Mexican mainland. There is a myriad of options so make sure to book your place at the Port Adventures Desk, Deck 5, Midship.

## SHOPPING

### UNIQUE SEA BAGS MADE FROM RECYCLED SAILS

Crafted in Portland, Maine, from real sails collected from sailing communities all over the world, breathing new life into recently retired sails, our totes embody the magic of the sea and bring to every Sea Bags owner a bit of the mystery surrounding the specific sail used in the making of their tote. Visit Whitecaps today to view the entire collection. Deck 3, Forward.

### LIGHT UP THE NIGHT

Glow merchandise is only available on Pirate Night! Don't miss your opportunity to light up the night! Stop by Quacks, Deck 11, Starboard to complete your pirate attire!

### AVAST! PIRATES GEAR AVAILABLE ONBOARD!

Shiver me timbers! Transform yourself into a swashbuckling pirate this Halloween season with the fun pirate costumes and accessories available at Mickey's Mainsail! Deck 3, Forward.

### UNIQUE DISNEY ART AT THE VISTA GALLERY

Stop by the Vista Gallery to view original artwork by a variety of celebrated Disney artists featuring some of your favorite Disney characters. Also check out unique Disney art painted on original dessert plates from the Animator's Palate Restaurants on the Disney Magic® Cruise Ship and Disney Wonder® Cruise Ship. Created by popular Disney artists, Mark Seppala and Joe Kaminski, these one-of-a-kind plates are available exclusively on Disney Cruise Line® while supplies last. Deck 4, Midship.

### PIRATE PARTY GEAR

Arrrrh... It's time to embrace your inner pirate! Make your way to Mickey's Mainsail, Deck 3, Forward, to find a treasure trove of pirate gear! Everything from costumes and apparel to hats and accessories!

## TODAY'S SHOPPING SPECIAL

Swiss made watches with intricate details. Purchase face and band separately to personalize the look.

Available ONLY in  
Whitecaps,  
Deck 3 Forward.

**WHITECAPS**



## GET THE PICTURE

We offer digital packages to fit your budget and you can select images in comfort of your home & send them to your friends or upload them on social media sites.

\*Terms and conditions apply.

Visit Shutters on Deck 4, Midship for more information.

*\*Please note that photos are available for viewing on our interactive photo kiosks approximately five hours after being taken and are only available for purchase during this cruise.*

## IMPORTANT INFORMATION

### Security Notice

All Guests (including children) who wish to disembark the ship are required to present their Key to the World card at the gangway. A photo ID is also required for those Guests who are 18 years of age or older. Guests under the age of 18 are required to have a Parent, Guardian or other responsible adult sign an authorization form at the time it is given out if they wish to go ashore unaccompanied. Authorization forms are available at the gangways and Guest Services.

### Please Note:

Please remember to use plenty of sunscreen & mosquito/ insect repellent when venturing ashore.

### Cold and Flu Reminder

Please wash hands frequently and thoroughly, particularly before meals. Contact the Health Center by dialing 7-1923, should anyone in your party become ill.

### Corridor Quiet Hours

As a courtesy to all our Guests, please recognize quiet hallway hours from 10:00 p.m. til 8:00 a.m.

### Inclement Weather

For the safety of all Guests, outdoor events may be changed due to unforeseen weather conditions.

### Environmental Message

With Disney's commitment to the Environment, please refrain from throwing anything over the Ship's side. Thank you!

### No Reserved Seats Policy

As a courtesy to all our Guests, we kindly advise that the saving of seats is not permitted in the Walt Disney Theatre, and the saving of the sun loungers is not permitted on Deck 11, 12, and 13. Items left unattended will be returned to lost and found at Guest Services, Deck 3 Midship.

### Smoking

For the comfort of our guests the following areas are designated as Smoking areas: - Promenade Deck (Deck 4), smoking is permitted Port Side, Aft only from 6:00 p.m. to 6:00 a.m.  
- Currents - Deck 13, Forward, Port Side.  
- Meridian Bar - Deck 12, Aft, Port Side, outside.  
- Smoking is permitted on stateroom verandahs.  
Smoking is prohibited inside all guest staterooms. Guests found smoking in their staterooms will be charged a \$250 stateroom recovery fee. Electronic cigarettes may only be used in designated smoking areas.

### Walt Disney Theatre

Theatrical performances may use artificial fog, strobe lights, pyrotechnics and other special effects. For the safety of our performers and the comfort of those around you, the use of any photography, video recording device or any electronic equipment is prohibited.

### Verandah Safety

Please do not leave any combustible materials on your balcony when not present in your stateroom for safety reasons.

Due to port regulations, when the ship is docked, the stores will remain closed.



Morning	8:30	8:45	9:00	9:15	9:30	9:45	10:00	10:15	10:30	10:45	11:00	11:15	11:30	11:45	12:00	12:15	12:30	12:45	1:00	1:15	1:30					
FUNNEL VISION	Atlantis: The Lost Empire (G) Funnel Vision							The Emperor's New Groove (G) Funnel Vision							Treasure Planet (PG) Funnel Vision											
BUENA VISTA THEATRE															Monsters University  (G) Duration: 1 Hour 43 Minutes							> 1:43 p.m.				
CHARACTERS	Please refer to Character Board in Lobby Atrium for today's Character Appearances																									
	Don't forget your camera to capture those Magical Moments!																									
FUN FOR ALL AGES	Port Adventures - Please check your tickets for meeting times and locations										Youth Activities Open House Vibe															
	Youth Activities Open House Disney Oceaneer Lab										Midship Detective Agency Deck 2 & 5, Midship															
	Youth Activities Open House Edge																									
ADULTS	Books and Magazines available in Cove Cafe																									
								Friends of Bill W. Outlook															Giant Jenga O'Gills Pub			
VIBE 14-17 YEARS OLD											Youth Activities Open House					Sun Deck Fun					Ice Cream Social					
EDGE 11-14 YEARS OLD						Youth Activities Open House					Crafts Galore					XBox® Kinect™ Tournament					Matinee Movie					
OCEANEER LAB 3-12 YEARS OLD								Craft Corner					Clarabelle's Moo Juice										Lunch		Super Sloppy Science	
	Youth Activities Open House																									
OCEANEER CLUB 3-12 YEARS OLD	Craft Corner		Heffalump Expodishun					Wii Challenge					Magic PlayFloor										Disney Animation: Creating a Character			

Afternoon	1:45	2:00	2:15	2:30	2:45	3:00	3:15	3:30	3:45	4:00	4:15	4:30	4:45	5:00	5:15	5:30	5:45	6:00	6:15	6:30	6:45	
FUNNEL VISION	Wreck-It Ralph (PG) Funnel Vision									Peter Pan (G) Funnel Vision												
BUENA VISTA THEATRE	Iron Man 3  (PG-13) Duration: 2 Hours 10 Minutes											Monsters University (G) Duration: 1 Hour 43 Minutes 										

Evening	7:00	7:15	7:30	7:45	8:00	8:15	8:30	8:45	9:00	9:15	9:30	9:45	10:00	10:15	10:30	10:45	11:00	11:15	11:30	11:45	12:00	
FUNNEL VISION								Muppet Treasure Island (G) Funnel Vision							Buccaneer Blast & Club Pirate Funnel Vision				POTC: The Curse of the Black Pearl (PG-13) Funnel Vision			
BUENA VISTA THEATRE								Monsters University (G) Duration: 1 Hour 43 Minutes							Planes  (PG) Duration: 1 Hour 32 Minutes				> 12:17 a.m.			
CHARACTER	Mickey Lobby Atrium (P)										Daisy Lobby Atrium (S)			Minnie Lobby Atrium (S)								
	Stitch Dk 4, Balcony											Donald Lobby Atrium (P)			Mickey Lobby Atrium (P)							
FUN FOR ALL AGES			Pirate Games Deck Stage																			
							Disney Animation La Piazza															

Symbol for activities that will be repeated during the cruise

Youth Activities Open House

FOLD

Fold along the dotted lines and take me with you so you don't miss any of the fun!

FOLD

IN THE SPOTLIGHT SERIES  
SERVE IT SERIES

UPPER SERIES  
CREATE & INVENT SERIES

CLUBHOUSE SERIES  
STORYBOOK SERIES



WEDNESDAY, OCTOBER 30, 2013 - COZUMEL

# BUENA VISTA THEATRE



<b>MONSTERS UNIVERSITY</b> 12:00 p.m. Duration: 1 hr 43 mins Rating: G	<b>JOHN WICK</b> 2:00 p.m. Duration: 2 hrs 10 mins Rating: PG-13	<b>MU</b> 5:45 & 8:30 p.m. Duration: 1 hr 43 mins Rating: G	<b>PLANES</b> 10:45 p.m. Duration: 1 hr 32 mins Rating: PG
--	--	---	--

## Character Appearances

**CAPTAIN HOOK & MR SMEE**  
Lobby Atrium (S) - 4:45 p.m.  
Deck 4, Balcony - 10:00 p.m.

**PIRATE CHIP & DALE**  
Deck 4, Balcony - 4:45 p.m.

**PETER PAN**  
Lobby Atrium (P) - 4:45 p.m.

**JAKE - THE NEVERLAND PIRATE**  
Deck 4, Balcony - 5:15 p.m.

**CAPTAIN JACK SPARROW**  
Preludes - 5:15 p.m. & 7:00 p.m.

**PIRATE MICKEY MOUSE**  
Lobby Atrium (P) - 5:15 p.m.,  
7:00 p.m. & 10:00 p.m.

**PIRATE MINNIE MOUSE**  
Lobby Atrium (S)  
5:15 p.m. & 10:00 p.m.

**PIRATE DONALD**  
Deck 4, Balcony - 5:45 p.m.  
Lobby Atrium (P) - 9:30 p.m.

**PIRATE GOOFY**  
Lobby Atrium (S) - 5:45 p.m.  
Deck 4, Balcony - 9:30 p.m.

**PIRATE STITCH**  
Deck 4, Balcony - 7:00 p.m.

**MICKEY'S PIRATES**  
Deck 11, Midship - 7:45 p.m.

**PIRATE DAISY DUCK**  
Lobby Atrium (S) - 9:30 p.m.



(H) Hallway - (S) Starboard Side - (P) Port Side - (V) Vestibule

For details of daily Disney character appearances, refer to the character line in your Navigator Grid or the digital character board in the Lobby Atrium.

## YOUTH ACTIVITIES THEMED EXPERIENCES

**CLUBHOUSE SERIES**  
focuses on movement and features content which appeals to younger children.

**JUMP UP! SERIES**  
includes large group games & movement-oriented activities.

**IN THE SPOTLIGHT SERIES**  
focuses on children's stage presence with lots of activities and enthusiasm.

**STORYBOOK SERIES**  
is designed with a strong connection to the Disney classic stories.

**CREATE & INVENT SERIES**  
will have a tactile focus allowing children to create and admire their work.

**SOLVE IT! SERIES**  
are less active, but will challenge children with problem/solutions-based activities.

### YOUTH ACTIVITIES OPEN HOUSE

A non-secured program with activities for families, adults and children of all ages to enjoy together.

## SHIP DIRECTORY

### YOUTH ACTIVITIES

DISNEY'S OCEANEER CLUB	DECK 5, MID	8:00 AM - 10:30 PM
DISNEY'S OCEANEER LAB	DECK 5, MID	9:00 AM - 12:00 MID
EDGE	DECK 13, MID	9:00 AM - 1:00 AM
VIBE	DECK 4, FWD	11:00 AM - 2:00 AM
IT'S A SMALL WORLD NURSERY	DECK 5, MID	8:00 AM - 11:00 PM

### POOLS & MORE

\* Children under 12 must have adult supervision in pool areas.

AQUADUCK	DECK 12, MID	9:00 AM - 8:30 PM 10:45 PM - 12:00 MID
AQUALAB	DECK 12, AFT	1:00 PM - 7:00 PM
DONALD'S POOL	DECK 11, MID	6:00 AM - 5:30 PM
MICKEY'S POOL	DECK 11, MID	6:00 AM - 5:30 PM
MICKEY'S SLIDE	DECK 11, MID	9:00 AM - 5:30 PM
NEMO'S REEF	DECK 11, MID	9:00 AM - 6:00 PM
QUIET COVE POOL	DECK 11, FWD	6:00 AM - 12:00 MID
SATELLITE FALLS	DECK 13, FWD	6:00 AM - 8:00 PM

### RECREATION

GOLF/SPORTS SIMULATORS	DECK 13, AFT	9:00 AM - 6:00 PM
GOOFY GOLF	DECK 13, AFT	8:00 AM - 8:30 PM
GOOFY'S SPORTS DECK	DECK 13, AFT	8:00 AM - 6:00 PM
MIDSHIP DETECTIVE AGENCY	DECKS 2 & 5, MID	9:00 AM - 10:00 PM
PORT ADVENTURES DESK	DECK 5, MID	8:00 AM - 11:00 AM

### GENERAL INFORMATION

ARR-CADE	DECK 11, AFT	24 HOURS
ADVENTURES BY DISNEY	DECK 4, MID	8:30 PM - 10:00 PM
DISNEY VACATION CLUB	DECK 4, MID	5:30 PM - 10:00 PM
FUTURE CRUISE SALES DESK	DECK 4, MID	9:00 AM - 10:00 AM 4:00 PM - 6:00 PM 7:30 PM - 9:30 PM
GUEST SERVICES	DECK 3, MID	24 HOURS
MEDICAL HEALTH CENTER	DECK 1, FWD	9:30 AM - 11:00 AM 4:30 PM - 7:00 PM
PORT & SHOPPING DESK	DECK 4, MID	7:30 PM - 8:30 PM
PRELUDES	DECK 3, FWD	4:45 PM - 5:30 PM 7:30 PM - 8:15 PM
SENSES SPA AND SALON	DECK 11, FWD	8:00 AM - 10:00 PM
SHUTTERS PHOTO GALLERY	DECK 4, MID	5:00 PM - 10:30 PM
SHUTTERS DIGITAL	DECK 4, MID	24 HOURS

### SHOPPING

BIBBIDI BOBBIDI BOUTIQUE	DECK 5, MID	9:00 AM - 9:00 PM
MICKEY'S MAINSAIL	DECK 3, FWD	6:15 PM - 11:00 PM
QUACKS	DECK 11, MID	7:00 PM - 10:30 PM
SEA TREASURES	DECK 3, FWD	6:15 PM - 11:00 PM
VISTA GALLERY	DECK 4, MID	6:15 PM - 10:00 PM
WHITECAPS	DECK 3, FWD	6:15 PM - 11:00 PM
WHOZITS & WHATZITS	DECK 11, MID	6:30 PM - 10:30 PM

**IMPORTANT INFORMATION**  
PLEASE STAY ON SHIPS TIME  
WHILST IN PORT TODAY.

**DINNER MENU**

Animator's Palate: Pirate's Menu  
Enchanted Garden: Pirate's Menu  
Royal Court: Pirate's Menu  
Dining Times: 5:45 p.m. & 8:15 p.m.

**DRINK OF THE DAY**

Princess Delight (Non Alcoholic)

**WEATHER FORECAST**

Wednesday: Partly Cloudy  
High: 84°F/29°C  
Thursday: Sunny  
High: 84°F/29°C

**Evening Attire: Pirate/Cruise Casual**

## DINING & LOUNGES

### BREAKFAST

CABANAS CONTINENTAL	DECK 11, AFT	6:30 AM - 7:00 AM
CABANAS	DECK 11, AFT	7:00 AM - 10:45 AM
ENCHANTED GARDEN	DECK 2, MID	8:00 AM - 10:30 AM
ROYAL COURT	DECK 3, MID	8:00 AM - 9:30 AM

### LUNCH

CABANAS	DECK 11, AFT	12:00 PM - 2:15 PM
FILMORE'S FAVORITES	DECK 11, MID	11:00 AM - 6:00 PM
LUIGI'S PIZZA	DECK 11, MID	11:00 AM - 6:00 PM
ROYAL COURT	DECK 3, MID	12:00 PM - 1:30 PM
TOW MATER'S GRILL	DECK 11, MID	11:00 AM - 11:00 PM

### DINNER

ANIMATOR'S PALATE	DECK 3, AFT	5:45 PM & 8:15 PM
ENCHANTED GARDEN	DECK 2, MID	5:45 PM & 8:15 PM
ROYAL COURT	DECK 3, MID	5:45 PM & 8:15 PM
CABANAS TABLE SERVICE	DECK 11, AFT	6:30 PM - 8:30 PM
PALO (18+) <small>(RESERVATION REQ. &amp; NON-FEE APPLIES)</small>	DECK 12, AFT	6:00 PM - 8:30 PM
REMY (18+) <small>(RESERVATION REQ. &amp; NON-FEE APPLIES)</small>	DECK 12, AFT	6:00 PM - 8:30 PM

### LATE NIGHT SNACKS

CABANAS PIRATES BUFFET	DECK 11, AFT	10:45 PM - 11:30 PM
LUIGI'S PIZZA	DECK 11, MID	9:30 PM - 12:30 AM

### ADDED FEATURES

BEVERAGE STATION	DECK 11, MID	24 HOURS
EYE SCREAM	DECK 11, MID	11:00 AM - 11:00 PM
ROOM SERVICE	DIAL 0	24 HOURS

### ENTERTAINMENT - LOUNGES - BARS

Adults must be 21 and older to consume alcoholic beverages.

BON VOYAGE	DECK 3, MID	3:00 PM - 11:00 PM
COVE BAR (18+)	DECK 11, FWD	10:30 AM - 11:00 PM
COVE CAFE (18+)	DECK 11, FWD	7:00 AM - 12:00 MID
CURRENTS (18+)	DECK 13, FWD	11:00 AM - 12:00 MID
D LOUNGE	DECK 4, MID	SHOWTIMES
FROZONE TREATS	DECK 11, MID	1:00 PM - 11:30 PM
LA PIAZZA	DECK 4, AFT	4:00 PM - 12:00 MID
MERIDIAN (18+)	DECK 12, AFT	5:00 PM - 12:00 MID
O'GILLS PUB (18+ AFTER 9:00 PM)	DECK 4, AFT	4:00 PM - 12:00 MID
OOH LA LA (18+)	DECK 4, AFT	5:00 PM - 12:00 MID
OUTLOOK	DECK 14, MID	SUNSET TIMES
SKYLINE (18+)	DECK 4, AFT	5:00 PM - 12:30 AM
THE TUBE (18+)	DECK 4, AFT	9:30 PM - 2:00 AM
VISTA CAFE	DECK 4, MID	7:00 AM - 10:30 PM
WAVES	DECK 12, AFT	1:00 PM - 11:00 PM

Consumers who order raw or partially cooked, ready-to-eat food of animal origin, are hereby informed that the food is not sufficiently cooked to ensure its safety.

## TIME ZONE CHANGE

Remember to turn your clocks **FORWARD 1 HOUR** upon retiring on **WEDNESDAY** evening, or first thing **THURSDAY** morning.



All Ashore: Approx. 8:30 a.m.  
All Aboard: 5:30 p.m.

### SHIP'S AGENT IN COZUMEL

ACS (Agencia Consignataria del Sureste), Calle 6 Norte No. 14 X  
10 Y 15 Ave., Cozumel, Q. Roo.,  
Mexico 77660. Tel. 521-987-873-9490

### IMPORTANT NUMBERS

Fire/Security: 7-3001  
Medical Emergency: 7-3000  
Health Center: 7-1923