

PERSONAL NAVIGATOR



TUESDAY, OCTOBER 29, 2013

Sunrise: 6:49 a.m. Sunset: 6:17 p.m.
Evening Attire: Cruise Casual
All Ashore: 1:00 p.m. All Aboard: 5:30 p.m.
PLEASE STAY ON SHIPS TIME WHILST IN PORT TODAY
Tuesday: Partly Cloudy High: 80°F/27°C
Wednesday: Sunny High: 84°F/29°C
COSTA MAYA, MEXICO

Disney WISHES

On the eve of their graduation, three best friends go on a magical journey down the wishing well. A host of Disney characters help them discover the connection between children who are becoming adults, and adults who stay in touch with being a kid at heart.

Walt Disney Theatre
Deck 3 & 4, Forward
6:15 p.m. & 8:30 p.m.



As a courtesy to all Guests, we kindly advise that the saving of seats is **not** permitted in the Walt Disney Theatre.



Assistance available at the entrance to the Walt Disney Theatre 30 minutes prior to show time.



Costa Maya Port Information

Costa Maya is a tourist region located on the Yucatán Peninsula 100 miles south of Playa del Carmen near the border of Belize in Mexico. Comprised of two small villages, Mahahual and Xcalak, Costa Maya provides a picture-perfect getaway the entire family is sure to love.

Early Mayans were predominant in the area from 200 B.C. to 900 A.D. In the 16th century, English pirates ravaged the coast and battled the Spanish for control of the region. At the end of the 19th century, the Mexican Navy took over the land. A treaty with Britain was signed soon after limiting the territorial rights of Mexico, thereby forcing Mexico to build a new trade port in Xcalak.

By the 1950's, the economy was flourishing as businesses - including stone and wood construction companies - made the area a supply center for the region. Steady growth continued until the mid-1990's when the government outlined a plan to make Costa Maya a tourist destination. Today, tourism is Costa Maya's main economic revenue stream and it's easy to understand why, thanks to the island's plethora of unspoiled natural beauty that has remained untouched for thousands of years.

DOCKING

The ship will dock at the Puerto Costa Maya, located approximately 1/2 mile north of Mahahual.

IMPORTANT INFORMATION

All Ashore: 1:00 p.m.
All Aboard: 5:30 p.m.

PLEASE STAY ON SHIPS TIME WHILST IN PORT TODAY



FAMILY DANCE PARTY

Bring the family out to this interactive dance party featuring The Three Amigos. We will party with Donald Duck, learn Salsa, Merengue and have a Latin good time!

D Lounge,
Deck 4, Midship,
10:15 p.m.

Don't Miss:

Wake up with Disney Junior

D Lounge, Deck 4, Midship - 8:30 a.m.

What happens when you experience unlimited fun with your favorite Disney Junior shows? You get an exciting dance party designed especially for preschoolers ages seven and under.

Disney Animation: Persistence of Vision

D Lounge, Deck 4, Midship - 9:00 a.m. & 4:00 p.m.

Go behind the scenes at Walt Disney Animation Studios and learn the principles that make animation work, and try your hand at creating your own easy animation demonstration in this fun and fascinating enrichment program.

Hypnosis Seminar with Ricky Kalmon

Buena Vista Theatre, Deck 4 & 5, Forward - 10:00 a.m.

Hypnotist Ricky Kalmon will reveal the secrets of losing weight and reducing stress with the use of self-hypnosis.

50 Movie Quotes Trivia (18+)

O'Gills Pub, Deck 4, Aft - 4:00 p.m.

"Life is like a box of Chocolates" Know the movie? Join your Cruise Staff and test your Movie Quote knowledge.

Disney Cruise Line



Please check your tour tickets for meeting times and locations. Visit the Port Adventures Desk, Deck 5, Midship for any questions.

DINNER MENU

Animator's Palate: Prince & Princess Menu
Enchanted Garden: Prince & Princess Menu
Royal Court: Prince & Princess Menu

DRINK OF THE DAY

Key Lime Margarita (Alcoholic)
Cranberry NO-Jito (Non Alcoholic)

IMPORTANT NUMBERS

Fire/Security: 7-3001
Medical Emergency: 7-3000
Health Center: 7-1923

FUN FOR ALL AGES HIGHLIGHTS



WAKE UP WITH DISNEY JUNIOR

D Lounge, Deck 4, Midship - 8:30 a.m.

What happens when you experience unlimited fun with your favorite Disney Junior shows? You get an exciting dance party designed especially for preschoolers ages seven and under.



DISNEY VACATION CLUB GROUP PREVIEW

The Tube, Deck 4, Aft - 10:00 a.m.

Want to learn more about taking magical vacations year after year? Please see a Disney Vacation Club representative on Deck 4, Midship, or call 7-2805 from your stateroom phone for more information about our interactive group presentation.

PLAYHOUSE D LOUNGE

D Lounge, Deck 4, Midship - 5:00 p.m.

Calling our youngest of cruisers! Here is a special playtime that is just for you. Come meet new friends; and join in on the fun as your Cruise Staff team takes you through interactive activities made just for you!

OFFICER PIN TRADING

Preludes, Deck 3, Forward - 7:30 p.m.

Come trade pins with the officers of the Disney Fantasy.

MAJORITY RULES

The Tube, Deck 4, Aft - 7:30 p.m.

Join your Club Host, to find out who really rules!



FAMILY FUSION

D Lounge, Deck 4, Midship - 9:45 p.m.

Bring the entire family and test your Disney knowledge in the high-tech interactive game show, Family Fusion.

FAMILY SUPERSTAR KARAOKE

D Lounge, Deck 4, Midship - 11:15 p.m.

Join your Cruise Staff in D Lounge tonight and sing along to your favorite song - fun for everyone.



ADULT ACTIVITY HIGHLIGHTS

SENSES SPA FITNESS CLASSES & SEMINARS

Sunrise Stretch - Donald's Pool - 7:00 a.m.

Fab Abs - Donald's Pool - 7:30 a.m.; Senses Fitness Center - 5:00 p.m.

Body Sculpt Boot Camp (Nom. Fee) - Senses Fitness Center - 9:00 a.m.

Secrets To A Flatter Stomach - Senses Spa & Salon - 10:00 a.m.

Facial Workshop - Senses Spa & Salon - 11:15 a.m.

Back Pain Solutions - Senses Spa & Salon - 11:30 a.m.

Pathway to Yoga - Senses Fitness Center - 4:00 p.m.



TASTING CLASSES

Chocolate Tasting (21+) - Ooh La La (Nom. Fee, Pre Book) - 11:15 a.m.

Italian Cocktail Tasting (21+) - La Piazza (Nom. Fee, Pre Book) - 4:45 p.m.

Whiskey Tasting (21+) - Meridian (Nom. Fee Pre Book) - 10:30 p.m.

Please make reservations for tastings at Guest Services for a nominal fee.

Tasting Seminars are only for Guests 21 and Older.



CLUB 18*21 - SOCIAL

Cove Cafe, Deck 11, Forward - 11:45 a.m.

CLUB 18*21 - ARR-CADE SOCIAL

Arr-cade, Deck 11, Aft - 5:00 p.m.

CLUB 18*21 - MIXER

O'Gills Pub, Deck 4, Aft - 10:00 p.m.

ART OF THE THEME SHOW TOUR

Pre-Book at Guest Services, Deck 3, Midship

Join us on a guided ship tour and discover the key ingredients that make the Disney Fantasy cruise ship one-of-a-kind.

LIVE GUITAR WITH TONY DELANEY

O'Gills Pub, Deck 4, Aft - 7:15 p.m., 9:30 p.m. & 10:30 p.m.

Join Tony Delaney as he plays live guitar for your listening pleasure.



POP!

The Tube, Deck 4, Aft - 10:00 p.m.

Have you been told you are full of useless information about pop culture? If the answer is "Yes", then you have what it takes to play the high energy game show all about the world of Pop!

80'S MUSIC CHALLENGE

The Tube, Deck 4, Aft - 10:30 p.m.

"Moon Walk" back to the 80's as we put your musical knowledge of the decade to the test.

\$5,000 MEGA JACKPOT BINGO

D Lounge, Deck 4, Midship

Card Sales - 10:45 a.m.

Game Starts - 11:00 a.m.

Don't miss your chance to take home big money! 4 CASH prize games and great raffle prizes to be won! Complete the fourth game in 46 numbers or less and win the \$5,000 Mega Jackpot!

MEGA RAFFLE JACKPOT BINGO

D Lounge, Deck 4, Midship

Card Sales - 7:15 p.m.

Game Starts - 7:30 p.m.

Join your Cruise Staff for family Bingo fun! Four cash prize games and great raffle prize packs to be won. Plus free Disney goodies for all in attendance! Don't miss out on the fun!

YOUTH ACTIVITY HIGHLIGHTS

DINE & PLAY

A convenience for families dining at 8:15 p.m., our Youth Activities Counselors will be available at 9:15 p.m. at the entrance of Royal Court, Enchanted Garden and Animator's Palate dining rooms to bring registered children to join the fun in the Youth Activity areas.



Deck 5, Midship (7-1440)

(3-12 years old)

9:00 a.m. - 12:00 mid

ALOHA LUAU

9:15 a.m.

It's party time, Hawaiian style! Come join us for a Luau experience and learn how to dance like Lilo & Stitch.

ONCE UPON A TIME

7:30 p.m.

Join Bartleby the Bookmaker for a magical, musical story time featuring a Disney Princess!



Deck 5, Midship (7-1445)

(3-12 years old)

9:00 a.m. - 12:00 mid

SUPER SLOPPY SCIENCE

9:30 a.m.

Join Professor Make-O-Mess in some of the most extreme experiments you will ever see in the world of Super Sloppy Science!

MARSHMALLOW OLYMPICS

4:15 p.m.

Learn all about this white sugary treat and everything it can do! Build a tower, go flying and test your agility - all with the help of a marshmallow.



Deck 13, Midship (7-9743)

(11-14 years old)

9:00 a.m. - 1:00 a.m.

THAT'S HILARIOUS

7:30 p.m.

Ever wanted to show off your comedy skills? Then be a part of the cast for the crazy improv show "That's Hilarious" and put on a live show for your friends.

GENDER WARS

10:45 p.m.

It's the battle of girls vs. boys... Who will dominate to win the ultimate battle?



Entrance on Deck 4, Forward (7-9418)

(14-17 years old)

10:00 a.m. - 2:00 a.m.

CROWNING OF THE COUCH POTATO

12:30 a.m.

Do you think you know your movies, TV and commercials? Well it's time to test your knowledge on all the recent releases.

ESPN DREAM TEAM DRAFT DAY - BASKETBALL

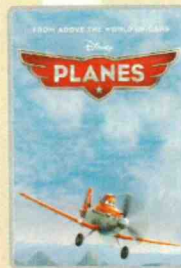
3:30 p.m.

Join the "Commissioner" and engage in this interactive fantasy basketball draft unlike anything you've ever seen! Can YOU draft the greatest basketball team of All-Time?

BUENA VISTA THEATRE

Today's Movies

DOLBY 3D



8:00 a.m.

Duration: 1 hr 32 mins

Rating: PG



3:00 p.m.

Duration: 1 hr 32 mins

Rating: PG

DOLBY 3D



5:00 p.m. & 8:30 p.m.

Duration: 2 hrs 29 mins

Rating: PG-13



11:15 p.m.

Duration: 1 hr 53 mins

Rating: PG



Don't change that channel!

It's time for a Disney Channel pool party! Your Cruise Staff will host exciting games and contests in between your favorite Disney Channel shows! So sit back, relax, and enjoy the sun!

Deck Stage,
Deck 11, Midship,
11:00 a.m.



Hop onboard and hit the dance floor as we take you on a ride through the charts, partying it up to some of the hottest British hits!

The Tube (18+),
Deck 4, Aft,
11:00 p.m.

YOUTH ACTIVITIES OPEN HOUSE

Open House is an opportunity for all to come and participate in a variety of exciting activities and free time in the Oceaneer Club, Oceaneer Lab, It's A Small World Nursery, Vibe and Edge throughout the cruise. During these times secured programming will still be offered in the other venue for those looking to check their children into care.

Disney's Oceaneer Lab: 1:00 p.m. - 2:30 p.m. & 7:00 p.m. - 8:30 p.m.
Disney's Oceaneer Club: 9:00 a.m. - 10:00 a.m. & 11:00 p.m. - 12:00 mid
Vibe: 10:00 a.m. - 11:00 a.m. & 6:30 p.m. - 8:30 p.m.
Edge: 9:00 a.m. - 10:00 a.m. & 5:00 p.m. - 6:30 p.m.

MORE TO ENJOY WHILE ONBOARD



ADVENTURES BY DISNEY

Join us for a special presentation on Thursday to learn what traveling with Adventures by Disney is all about. See our Adventure Guide on Deck 4, Midship.

PLAN YOUR NEXT CRUISE

Enjoying the Cruise? Book another Disney Cruise Line vacation today! Today is a great day to visit the Future Cruise Sales Desk, Deck 4, Midship, or call extension 7-2848 to find out how you can save 10%, receive up to a \$200 onboard credit, and pay a reduced deposit on your next cruise!

PORT AND SHOPPING INFORMATION

Cozumel is the largest tax and duty free shopping port in the Western Caribbean find out why at the Mexico Shopping Highlights Talk at 11:00 a.m. Buena Vista Theatre, Deck 4 & 5, Forward. Learn about everything from Vanilla to Diamonds & Swiss Time Pieces. All who attend will receive a free Charm and the chance to win a Pearl Necklace!



ONBOARD AIRLINE CHECK IN

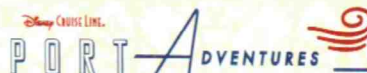
If you would like to have your boarding passes printed for you onboard and have your luggage taken to the airport for you, register by midnight tomorrow. If you have a Disney Cruise Line airport transfer to Orlando International Airport and fly with one of the participating airlines, stop at Guest Services, Deck 3, Midship to register.

ARR-CADE

Where can you be a ninja, play the guitar like a rock star, race a car down the streets of Tokyo and along the way WIN some great prizes? Arr-CADE located Deck 11, Aft, where the pirates play.

FREE ON DEMAND TV

Watch Disney movies, Hollywood features, ABC Shows, and even captioned content, plus much more "On Demand" for FREE in the comfort of your stateroom! Bookmark your movie and come back to watch it later. Press MENU on your stateroom television remote control, and follow the prompts.



Welcome to Costa Maya, a secluded destination on Mexico's stunning Riviera Maya! The port of Costa Maya is booming and there are many amazing Port Adventures to choose from. There is limited availability on tours, so stop by the Port Adventures Desk, Deck 5, Midship, to reserve your place. Don't forget to plan ahead for Castaway Cay, where only a few Stingray encounters remain available.

SHOPPING

ALBERTO COLLECTIONS - HOUSE OF TANZANITE

Visit Whitecaps today where you will discover elegant jewelry designs by Alberto Collections House of Tanzanite, the world's largest supplier of distinctive and fine tanzanite jewelry. Deck 3, Forward.

PETITE ART PRINTS AT THE VISTA GALLERY

Are you an art lover on a budget? Do you have limited space in your suitcase or on your walls at home? There's no need to miss out on owning inspiring creations by some of Disney's greatest artists! Stop by the Vista Gallery and check out the various petite prints of artwork created by these celebrated artists. Deck 4, Midship.

OFFICER PIN TRADING

Come and trade pins with the Officers of the Disney Fantasy at 7:30 p.m. in Preludes, Deck 3, Forward.

GOING ONCE, GOING TWICE, SOLD!

Don't miss the live auction today at 11:00 a.m. by Blue Gallery where you'll have the opportunity to take home beautiful artwork from an array of internationally renowned artists. Also take the time to visit the Vista Gallery, Deck 4 Midship. Complimentary postcards will be given by Blue Gallery to the first 25 Guests that register for the Live Auction. La Piazza, Deck 4, Aft. Live Auction and all information contained herein are subject to change or cancellation without notice.

STYLISH TIMEPIECES BY PHILIP STEIN

Take the time to visit Whitecaps and discover the wide selection of luxury brand timepieces available including sophisticated designs from Philip Stein. With elegant pieces from the Signature Collection and the unique Sleep Bracelet designed to improve your quality of sleep, Philip Stein provides the wearer with a sense of style and serenity. Whitecaps, Deck 3, Forward.

Due to port regulations, when the ship is docked, the stores will remain closed.



SENSES
SPA & SALON

SALON TASTER SPECIAL

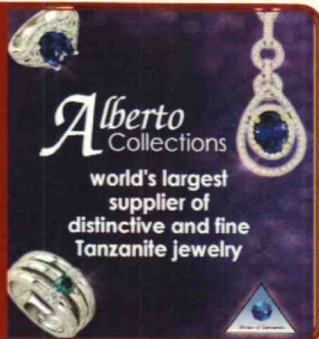
- Scalp Massage
- European Facial
- Hand Treatment
- Sunglow Makeover
- Conditioning Hair Treatment
- Eye Collagen Treatment
- Foot & Ankle Massage
- Neck & Shoulder Massage

Three for 99.00
Five for 119.00
All Eight for 139.00

ALBERTO TRUNK SHOW

House of Tanzanite special trunk show of fine Tanzanite, colored Diamonds, Alexandrite, and Emerald jewelry from classic chic to over the top elegant designs hand made in the US. This week onboard at Whitecaps.

WHITECAPS



Alberto
Collections
world's largest
supplier of
distinctive and fine
Tanzanite jewelry

Shutters PHOTOBOOK

Share your cruise memories with family & friends with this keepsake Photobook. Personalize each and every page with wonderful photos of your family during this cruise. Please order prior to 8:00 p.m. on the last day of the cruise.

**Please note that photos are available for viewing on our interactive photo kiosks approximately five hours after being taken and are only available for purchase during this cruise.*

IMPORTANT INFORMATION

Security Notice

All Guests (including children) who wish to disembark the ship are required to present their Key to the World card at the gangway. A photo ID is also required for those Guests who are 18 years of age or older. Guests under the age of 18 are required to have a Parent, Guardian or other responsible adult sign an authorization form at the time it is given out if they wish to go ashore unaccompanied. Authorization forms are available at the gangways and Guest Services.

Please Note:

Please remember to use plenty of sunscreen & mosquito/ insect repellent when venturing ashore.

Cold and Flu Reminder

Please wash hands frequently and thoroughly, particularly before meals. Contact the Health Center by dialing 7-1923, should anyone in your party become ill.

Corridor Quiet Hours

As a courtesy to all our Guests, please recognize quiet hallway hours from 10:00 p.m. to 8:00 a.m.

Inclement Weather

For the safety of all Guests, outdoor events may be changed due to unforeseen weather conditions.

Environmental Message

With Disney's commitment to the Environment, please refrain from throwing anything over the Ship's side. Thank you!

No Reserved Seats Policy

As a courtesy to all our Guests, we kindly advise that the saving of seats is not permitted in the Walt Disney Theatre, and the saving of the sun loungers is not permitted on Deck 11, 12, and 13. Items left unattended will be returned to lost and found at Guest Services, Deck 3 Midship.

Smoking

For the comfort of our guests the following areas are designated as Smoking areas: - Promenade Deck (Deck 4), smoking is permitted Port Side, Aft only from 6:00 p.m. to 6:00 a.m.
- Currents - Deck 13, Forward, Port Side.
- Meridian Bar - Deck 12, Aft, Port Side, outside.
- Smoking is permitted on stateroom verandahs. Smoking is prohibited inside all guest staterooms. Guests found smoking in their staterooms will be charged a \$250 stateroom recovery fee. Electronic cigarettes may only be used in designated smoking areas.

Walt Disney Theatre

Theatrical performances may use artificial fog, strobe lights, pyrotechnics and other special effects. For the safety of our performers and the comfort of those around you, the use of any photography, video recording device or any electronic equipment is prohibited.

Verandah Safety

Please do not leave any combustible materials on your balcony when not present in your stateroom for safety reasons.

Morning	8:30	8:45	9:00	9:15	9:30	9:45	10:00	10:15	10:30	10:45	11:00	11:15	11:30	11:45	12:00	12:15	12:30	12:45	1:00	1:15	1:30
FUNNEL VISION	The Jungle Book (G) Funnel Vision				Disney Channel on Deck Funnel Vision				Hercules (G) Funnel Vision												
BUENA VISTA THEATRE	Planes (PG) Duration: 1 Hour 32 Minutes < Starts at 8:00 a.m.				Hypnosis Seminar with Ricky Kalmon				Mexico Shopping Highlights												
CHARACTER	Daisy Dk 4, Balcony				Princess Gathering Lobby Atrium				Minnie Dk 4, Balcony				Sofia Dk 4, Balcony				Tinker Bell Lobby Atrium				
FUN FOR ALL AGES	Disney Junior D Lounge				Family Crafts: 3D Crafts O'Gills Pub				Toddler Time Goofy's Sports Deck				\$5,000 Mega Jackpot Bingo BINGO D Lounge				Board Games Available in O'Gills Pub				
	Disney Animation Persistence of Vision D Lounge				Crafts - Paper Plane Making O'Gills Pub				Bingo Pre Sales				Disney Channel on Deck Deck Stage				Port Adventures - Please check your tickets for meeting times and locations				
					Disney Vacation Club Group Preview The Tube												Last Minute Shopping Advice Gangway				
ADULTS	Friends of Bill W. Outlook				Art of the Theme Show Tour Pre Book at Guest Services				Art Preview La Piazza				Art Auction La Piazza								
	Boot Camp (Nom. Fee) Senses Fitness Center				Hypnosis Seminar with Ricky Kalmon Buena Vista Theatre				Mexico Shopping Highlights Buena Vista Theatre				Club 18*21 - Social Cove Cafe								
VIBE 14-17 YEARS OLD					☕ Coffee Break				Dream Now! Sea How! - Theatrical				Sun Deck Fun								
EDGE 11-14 YEARS OLD	🎮 Youth Activities Open House				Wii Challenge				Ball Games				Craft Corner				Scattergories				
OCEANEER LAB 3-12 YEARS OLD	🧪 Super Sloppy Science				Games & More				♥ Magic Show												
					🎮 GAGA Ball				Craft Time												
OCEANEER CLUB 3-12 YEARS OLD	🌺 Aloha Luau				🌊 Journey to Neverland				🎮 Mickey's Puzzle Playtime				Lunch								
	🎮 Youth Activities Open House								🎮 Craft Corner								🎮 Parachute Games				
Afternoon	1:45	2:00	2:15	2:30	2:45	3:00	3:15	3:30	3:45	4:00	4:15	4:30	4:45	5:00	5:15	5:30	5:45	6:00	6:15	6:30	6:45
FUNNEL VISION	Teen Beach Movie (G) Funnel Vision				Tangled (PG) Funnel Vision				High School Musical (G) Funnel Vision												
BUENA VISTA THEATRE					Planes (PG) Duration: 1 Hour 32 Minutes				The Lone Ranger (PG-13) Duration: 2 Hours 29 Minutes				> 7:29 p.m.								
CHARACTER									Mickey Lobby Atrium				Buzz Lobby Atrium				Tiana Dk 4, Balcony				
													Phineas & Ferb Lobby Atrium				Cinderella Lobby Atrium				
													Snow White Lobby Atrium				Woody Lobby Atrium				
																	Donald Dk 4, Balcony				
FUN FOR ALL AGES	Board Games Available in O'Gills Pub				Family Crafts: Pipe Cleaner Creations La Piazza				Disney Animation Persistence of Vision D Lounge				Playhouse D Lounge D Lounge				Live Music with Daria & Roberto Deck 12, Forward				
													XBOX® Kinect™ O'Gills Pub				Love Songs with Indigo Sky Lobby Atrium				
ADULTS	Books and Magazines available in Cove Cafe				50 Movie Quotes Trivia O'Gills Pub				Club 18*21 - Arr-cade Social Arr-cade				Pub Quiz O'Gills Pub								
					Informal Card Play O'Gills Pub				Pathway to Yoga Senses Fitness Center				Italian Cocktail Tasting (21+) La Piazza (Nom. Fee, Pre Book)								
VIBE 14-17 YEARS OLD	GAGA Ball				Teens' Choice				ESPN Dream Team Draft Day - Basketball				Spoons Challenge				Animation Antics				
EDGE 11-14 YEARS OLD	Scavenger Hunt				Anyone Can Cook: Pizza				Pizza and Ice Cream Party				🎮 Youth Activities Open House				Mad Gab				
OCEANEER LAB 3-12 YEARS OLD	🎮 Magic PlayFloor				Crafts Galore				♥ Detective School				🎮 Marshmallow Olympics				Wii Challenge				
	🎮 Youth Activities Open House				Xbox Kinect Tournament				Bingo												
OCEANEER CLUB 3-12 YEARS OLD	🎮 Disney Animation: Creating a Character				♥ Memory Wall				🎮 Magic PlayFloor				Dinner								
					Play-Doh Fun				Games & More								🎮 Picture This				
																	Games & More				
																	🎮 Craft Corner				
Evening	7:00	7:15	7:30	7:45	8:00	8:15	8:30	8:45	9:00	9:15	9:30	9:45	10:00	10:15	10:30	10:45	11:00	11:15	11:30	11:45	12:00
FUNNEL VISION					High School Musical 2 (G) Funnel Vision				The Avengers (PG-13) Funnel Vision												
BUENA VISTA THEATRE					The Lone Ranger (PG-13) Duration: 2 Hours 29 Minutes				Wreck-It Ralph (PG) Duration: 1 Hour 53 Minutes > 1:06 a.m.												
CHARACTER	Pluto Dk 4, Balcony				Buzz Lobby Atrium				Phineas & Ferb Lobby Atrium				Woody Lobby Atrium				Minnie Lobby Atrium				
					Cinderella Lobby Atrium				Mickey Lobby Atrium				Goofy Dk 4, Balcony								
FUN FOR ALL AGES	Bingo Pre Sales				Mega Raffle Jackpot Bingo D Lounge				Family Fusion D Lounge				Viva Fiesta D Lounge				Family Superstar Karaoke D Lounge				
	DJ Dance Music The Tube				Officer Pin Trading Preludes				Majority Rules The Tube												
ADULTS	Clara Oman: Tribute to Elton John La Piazza				Pub Quiz O'Gills Pub				Live Piano Tribute to Frank Sinatra La Piazza				80's Music Challenge The Tube				Whiskey Tasting (21+) Meridian (Nom. Fee, Pre Book)				
	Live Guitar with Tony Delaney O'Gills Pub																				
VIBE 14-17 YEARS OLD	🎮 Dive into DJ'ing				Smoothie Hour				Pump It Up				Anyone Can Cook: Pizza				Gender Wars				
EDGE 11-14 YEARS OLD	Mad Gab				That's Hilarious				Four Square				Karaoke				Picture This				
OCEANEER LAB 3-12 YEARS OLD	🎮 Anyone Can Cook				🎮 Piston Cup Challenge				♥ Get the Hook												
	🎮 Youth Activities Open House				Stop The Boat												Games & More				
OCEANEER CLUB 3-12 YEARS OLD	Games & More				🎮 Once Upon a Time				Pluto's Pajama Party												
					Bingo				🎮 Dance Party								🎮 Youth Activities Open House				

Symbol for activities that will be repeated during the cruise



TUESDAY, OCTOBER 29, 2013 - COSTA MAYA

BUENA VISTA THEATRE



8:00 a.m.
Duration:
1 hr 32 mins
Rating: PG



3:00 p.m.
Duration:
1 hr 32 mins
Rating: PG



5:00 & 8:30 p.m.
Duration:
2 hrs 29 mins
Rating: PG-13



11:15 p.m.
Duration:
1 hr 53 mins
Rating: PG

Character Appearances

DAISY DUCK

Deck 4, Balcony - 9:15 a.m.

PRINCESS GATHERING

Lobby Atrium - 10:00 a.m.

PRINCESS SOFIA

Deck 4, Balcony
10:15 a.m. & 11:30 a.m.

TINKER BELL

Lobby Atrium (V)
10:30 a.m. & 11:30 a.m.

PRINCESS MINNIE

Deck 4, Balcony - 11:00 a.m.

MICKEY MOUSE

Lobby Atrium (P) - 4:45 p.m.
Deck 4, Balcony - 7:45 p.m.
Preludes - 10:00 p.m.

BUZZ LIGHTYEAR

Lobby Atrium (V) - 5:00 p.m.,
7:30 p.m. & 10:00 p.m.

PRINCESS TIANA

Deck 4, Balcony - 5:15 p.m.

SNOW WHITE

Lobby Atrium (P) - 5:15 p.m.

WOODY

Lobby Atrium (V) - 5:30 p.m.,
8:00 p.m. & 9:30 p.m.

PHINEAS & FERB

Lobby Atrium (H) - 5:30 p.m.,
7:45 p.m. & 9:45 p.m.

CINDERELLA

Lobby Atrium (P) - 5:45 p.m.
Lobby Atrium - 7:30 p.m.

DONALD DUCK

Deck 4, Balcony
5:45 p.m. & 9:30 p.m.

PLUTO

Deck 4, Balcony - 7:15 p.m.

MINNIE MOUSE

Preludes - 9:30 p.m.

GOOFEY

Deck 4, Balcony - 10:00 p.m.

(H) Hallway - (S) Starboard Side - (P) Port Side - (V) Vestibule
For details of daily Disney character appearances, refer to the character line in your Navigator Grid or the digital character board in the Lobby Atrium.

YOUTH ACTIVITIES THEMED EXPERIENCES

CLUBHOUSE SERIES
focuses on movement and features content which appeals to younger children.

JUMP UP! SERIES
includes large group games & movement-oriented activities.

IN THE SPOTLIGHT SERIES
focuses on children's stage presence with lots of activities and enthusiasm.

STORYBOOK SERIES
is designed with a strong connection to the Disney classic stories.

CREATE & INVENT SERIES
will have a tactile focus allowing children to create and admire their work.

SOLVE IT! SERIES
are less active, but will challenge children with problem/solutions-based activities.

YOUTH ACTIVITIES OPEN HOUSE

A non-secured program with activities for families, adults and children of all ages to enjoy together.

SHIP DIRECTORY

YOUTH ACTIVITIES

DISNEY'S OCEANEER CLUB	DECK 5, MID	9:00 AM - 12:00 MID
DISNEY'S OCEANEER LAB	DECK 5, MID	9:00 AM - 12:00 MID
EDGE	DECK 13, MID	9:00 AM - 1:00 AM
VIBE	DECK 4, FWD	10:00 AM - 2:00 AM
IT'S A SMALL WORLD NURSERY	DECK 5, MID	9:00 AM - 11:00 PM

POOLS & MORE

* Children under 12 must have adult supervision in pool areas.

AQUADUCK	DECK 12, MID	9:00 AM - 10:00 PM
AQUALAB	DECK 12, AFT	10:00 AM - 6:00 PM
DONALD'S POOL	DECK 11, MID	6:00 AM - 12:00 MID
MICKEY'S POOL	DECK 11, MID	6:00 AM - 10:00 PM
MICKEY'S SLIDE	DECK 11, MID	9:00 AM - 6:00 PM
NEMO'S REEF	DECK 11, MID	9:00 AM - 6:00 PM
QUIET COVE POOL	DECK 11, FWD	6:00 AM - 12:00 MID
SATELLITE FALLS	DECK 13, FWD	6:00 AM - 8:00 PM

RECREATION

GOLF/SPORTS SIMULATORS	DECK 13, AFT	9:00 AM - 6:00 PM
GOOFEY GOLF	DECK 13, AFT	8:00 AM - 10:00 PM
GOOFEY'S SPORTS DECK	DECK 13, AFT	8:00 AM - 6:00 PM
MIDSHIP DETECTIVE AGENCY	DECKS 2 & 5, MID	9:00 AM - 10:00 PM
PORT ADVENTURES DESK	DECK 5, MID	9:00 AM - 1:00 PM 7:00 PM - 8:30 PM
SENSES FITNESS CENTER	DECK 11, FWD	6:30 AM - 10:00 PM

GENERAL INFORMATION

ARR-CADE	DECK 11, AFT	24 HOURS
ADVENTURES BY DISNEY	DECK 4, MID	9:00 AM - 12:00 PM
DISNEY VACATION CLUB	DECK 4, MID	5:30 PM - 10:00 PM
FUTURE CRUISE SALES DESK	DECK 4, MID	9:00 AM - 12:00 PM 5:00 PM - 6:00 PM 7:30 PM - 10:00 PM
GUEST SERVICES	DECK 3, MID	24 HOURS
MEDICAL HEALTH CENTER	DECK 1, FWD	9:30 AM - 11:00 AM 4:30 PM - 7:00 PM
PORT & SHOPPING DESK	DECK 4, MID	7:30 PM - 8:30 PM
PRELUDES	DECK 3, FWD	5:45 PM - 6:30 PM 8:00 PM - 8:45 PM
SENSES SPA AND SALON	DECK 11, FWD	8:00 AM - 10:00 PM
SHUTTERS PHOTO GALLERY	DECK 4, MID	5:00 PM - 10:30 PM
SHUTTERS DIGITAL	DECK 4, MID	24 HOURS

SHOPPING

BIBBIDI BOBBIDI BOUTIQUE	DECK 5, MID	9:00 AM - 9:00 PM
MICKEY'S MAINSAIL	DECK 3, FWD	9:00 AM - 12:00 PM 6:30 PM - 11:00 PM
QUACKS	DECK 11, MID	
SEA TREASURES	DECK 3, FWD	9:00 AM - 12:00 PM 6:30 PM - 11:00 PM
VISTA GALLERY	DECK 4, MID	7:00 PM - 10:00 PM
WHITECAPS	DECK 3, FWD	9:00 AM - 12:00 PM 6:30 PM - 11:00 PM
WHOZITS & WHATZITS	DECK 11, MID	9:00 AM - 12:00 PM

DINNER MENU
 Animator's Palate: Prince & Princess
 Enchanted Garden: Prince & Princess
 Royal Court: Prince & Princess
 Dining Times: 5:45 p.m. & 8:15 p.m.

DRINK OF THE DAY
 Key Lime Margarita (Alcoholic)
 Cranberry No-Jito (Non Alcoholic)

WEATHER FORECAST
 Tuesday: Partly Cloudy
 High: 80°F/27°C
 Wednesday: Sunny
 High: 84°F/29°C

Evening Attire: Cruise Casual

DINING & LOUNGES

BREAKFAST

CABANAS CONTINENTAL	DECK 11, AFT	7:00 AM - 7:30 AM
CABANAS	DECK 11, AFT	7:30 AM - 11:15 AM
ENCHANTED GARDEN	DECK 2, MID	8:00 AM - 10:45 AM
ROYAL COURT	DECK 3, MID	8:00 AM - 9:30 AM

LUNCH

CABANAS	DECK 11, AFT	11:15 AM - 2:15 PM
FILLMORE'S FAVORITES	DECK 11, MID	10:30 AM - 6:00 PM
LUIGI'S PIZZA	DECK 11, MID	10:30 AM - 6:00 PM
ROYAL COURT	DECK 3, MID	12:00 PM - 1:30 PM
TOW MATER'S GRILL	DECK 11, MID	10:30 AM - 11:00 PM

DINNER

ANIMATOR'S PALATE	DECK 3, AFT	5:45 PM & 8:15 PM
ENCHANTED GARDEN	DECK 2, MID	5:45 PM & 8:15 PM
ROYAL COURT	DECK 3, MID	5:45 PM & 8:15 PM
CABANAS TABLE SERVICE	DECK 11, AFT	6:30 PM & 8:30 PM
PALO (18+) (Reservations Req. & Now. Fee Applies)	DECK 12, AFT	6:00 PM - 8:30 PM
REMY (18+) (Reservations Req. & Now. Fee Applies)	DECK 12, AFT	6:00 PM - 8:30 PM

LATE NIGHT SNACKS

LA PIAZZA (18+)	DECK 4, AFT	10:45 PM - 11:45 PM
LUIGI'S PIZZA	DECK 11, MID	9:30 PM - 12:30 AM

ADDED FEATURES

BEVERAGE STATION	DECK 11, MID	24 HOURS
EYE SCREAM	DECK 11, MID	11:00 AM - 11:00 PM
ROOM SERVICE	DIAL 0	24 HOURS

ENTERTAINMENT - LOUNGES - BARS

Adults must be 21 and older to consume alcoholic beverages.

BON VOYAGE	DECK 3, MID	10:00 AM - 10:00 AM
COVE BAR (18+)	DECK 11, FWD	10:00 AM - 11:00 PM
COVE CAFE (18+)	DECK 11, FWD	7:00 AM - 12:00 MID
CURRENTS (18+)	DECK 13, FWD	10:00 AM - 11:00 PM
D LOUNGE	DECK 4, MID	SHOWTIMES
FROZONE TREATS	DECK 11, MID	10:00 AM - 10:00 PM
LA PIAZZA	DECK 4, AFT	3:30 PM - 12:00 MID
MERIDIAN (18+)	DECK 12, AFT	5:00 PM - 12:00 MID
O'GILLS PUB (18+ AFTER 9:00 PM)	DECK 4, AFT	3:00 PM - 12:00 MID
OOH LA LA (18+)	DECK 4, AFT	5:00 PM - 12:00 MID
OUTLOOK	DECK 14, MID	SUNSET TIMES
SKYLINE (18+)	DECK 4, AFT	5:00 PM - 12:30 AM
THE TUBE (18+)	DECK 4, AFT	9:30 PM - 2:00 AM
VISTA CAFE	DECK 4, MID	7:00 AM - 11:00 PM
WAVES	DECK 12, AFT	10:00 AM - 6:00 PM

Consumers who order raw or partially cooked, ready-to-eat food of animal origin, are hereby informed that the food is not sufficiently cooked to ensure its safety.

IMPORTANT INFORMATION

PLEASE STAY ON SHIPS TIME
WHILST IN PORT TODAY

All Ashore: Approx. 1:00 p.m.
All Aboard: 5:30 p.m.

SHIP'S AGENT IN COSTA MAYA | IMPORTANT NUMBERS

Sr. Marco Souza	Fire/Security:	7-3001
Carmichel, Coordinador General,	Medical Emergency:	7-3000
Aconsur, Mahahual, Q. Roo, México	Health Center:	7-1923
Tel: 52 983 834 5674 or 521 9837005253		