

PERSONAL NAVIGATOR

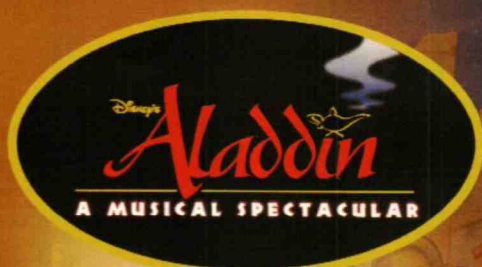


SUNDAY, OCTOBER 27, 2013

Sunrise: 7:40 a.m. Sunset: 7:03 p.m.
Evening Attire: Formal

Sunday: Cloudy High: 77°F/25°C
Monday: Cloudy High: 82°F/28°C

DAY AT SEA

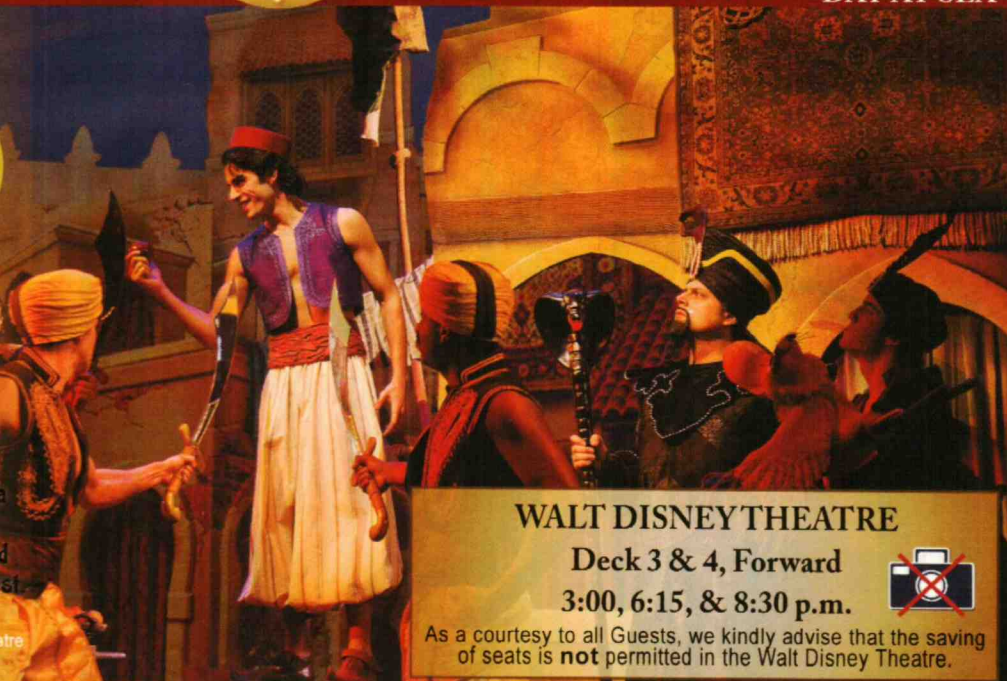


New to Disney Cruise Line,
"Disney's Aladdin - A Musical Spectacular"

A fast-paced, musical comedy based on the beloved animated film.

Aladdin, the "street rat" of Agrabah, meets a wise-cracking Genie, battles the evil Jafar, and falls in love with the beautiful and spirited Princess Jasmine. Disney storytelling at its best.

Assistance available at the entrance to the Walt Disney Theatre 30 minutes prior to show time.



WALT DISNEY THEATRE

Deck 3 & 4, Forward

3:00, 6:15, & 8:30 p.m.



As a courtesy to all Guests, we kindly advise that the saving of seats is **not** permitted in the Walt Disney Theatre.

Disney FANTASY Fun Facts

Tonnage: 130,000 Gross Tons

Height: 216 Feet

Length: 1115 Feet

Important Dates

Name Announcement: March 10, 2009

Steel Cutting: March 16, 2010

Keel Laying: February 11, 2011

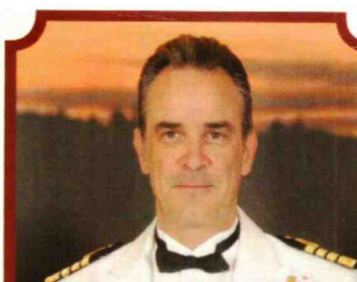
Delivery: February 9, 2012

Almost four football fields in length, the Disney Fantasy is longer than the height of the Eiffel Tower in Paris (1,063 feet). She is also longer than the height of New York City's famous Chrysler building (1,047 feet).

Disney Fantasy's Whistle

Will be played after today's noon announcement

The Disney Fantasy's whistle, a prominent element of the "Sailing Away" deck party at the start of the cruise, is quite the musical talent. It's able to perform not just the first musical line of "When You Wish Upon a Star" but also the second line of the song ("makes no difference who you are") plus several measures of "Yo Ho (A Pirate's Life for Me)," "It's a Small World," "Be Our Guest," "Hi Diddle Dee Dee (An Actor's Life for Me)" and "A Dream is a Wish."



CAPTAIN'S RECEPTION

Enjoy live music and a cocktail while meeting some of the ship's officers.

Lobby Atrium, Deck 3, Midship,
5:00 & 7:30 p.m.

Enjoy an exclusive photo opportunity with Captain Marco at

5:15 & 7:30 p.m., Lobby Atrium

Don't Miss:

Art of The Theme Show Tour (18+)

Pre-Book at Guest Services, Deck 3, Midship

Join us on a guided ship tour and discover the key ingredients that make the Disney Fantasy cruise ship one-of-a-kind.

So You Think You Know Your Family?

The Tube, Deck 4, Aft - 7:30 p.m.

This fun-filled family game show is always full of surprises. Find out how well you know, or don't know your family!

Club D Dance Party

D Lounge, Deck 4, Midship - 7:30 p.m. & 9:45 p.m.

Join your snazzy Cruise Staff as we turn D-Lounge upside down in this electrifying family nightclub featuring appearances from some of your favorite Disney Characters. Club D, where everyone is a V.I.P!

Majority Rules (18+)

The Tube, Deck 4, Aft - 10:00 p.m.

Join your Club Host to find out who really rules!



TIME ZONE CHANGE

Remember to turn your clocks **BACK 1 HOUR** upon retiring on **SUNDAY** evening, or first thing **MONDAY** morning.

DINNER MENU

Animator's Palate: Pacific Rim Cuisine
Enchanted Garden: Continental Market Cuisine
Royal Court: French Cuisine

DRINK OF THE DAY

Bahama Mama (Alcoholic)
Coco Bali
(Non Alcoholic)

IMPORTANT NUMBERS

Fire/Security: 7-3001
Medical Emergency: 7-3000
Health Center: 7-1923

FUN FOR ALL AGES HIGHLIGHTS



WAKE UP WITH DISNEY JUNIOR

D Lounge, Deck 4, Midship - 8:30 a.m.

What happens when you experience unlimited fun with your favorite Disney Junior shows? You get an exciting dance party designed especially for preschoolers ages seven and under.

DISNEY ANIMATION: CREATING A CHARACTER

D Lounge, Deck 4, Midship - 9:45 a.m. & 12:45 p.m.

Go behind the scenes at Walt Disney Animation Studios as Walt Disney himself talks about his most famous characters, then learn the basic techniques of drawing Mickey and Donald in this fun and interesting enrichment program.



JACK-JACK'S INCREDIBLE DIAPER DASH

Lobby Atrium, Deck 3, Midship - 12:00 p.m.

Calling all baby cruisers! The Disney Fantasy's babies take to the mat to see who's the fastest crawler of the seven seas! Register your baby 15 minutes prior to the big race.

PORT & SHOPPING TALK

Buena Vista Theatre, Deck 4 & 5, Forward - 1:45 p.m.

Join your Port and Shopping Guides to learn about the incredible shopping ashore this cruise!



MICKEY 200

The Tube, Deck 4, Aft - 2:15 p.m.

Don't eat your vegetables... race them in this wild and wacky charge to the finish line. May the best veggie win! (Limited Availability)

PLAYHOUSE D LOUNGE

D Lounge, Deck 4, Midship - 5:15 p.m.

Calling our youngest of cruisers! Here is a special playtime that is just for you. Come meet new friends; and join in on the fun as your Cruise Staff team takes you through interactive activities made just for you!

FAMILY SUPERSTAR KARAOKE

D Lounge, Deck 4, Midship - 8:30 p.m. & 10:30 p.m.

Join your Cruise Staff in D Lounge tonight and sing along to your favorite song - fun for everyone.

ADULT ACTIVITY HIGHLIGHTS

SENSES SPA FITNESS CLASSES & SEMINARS

Yoga - Donald's Pool - 7:00 a.m.

Body Sculpt Boot Camp (Nom. Fee) - Senses Fitness Center - 9:00 a.m.

Detox For Health and Weight Loss - Senses Spa & Salon - 11:00 a.m.

Eat More to Weigh Less - Senses Spa & Salon - 2:00 p.m.

Improving Your Posture-Walk in Comfort - Senses Fitness Center - 3:00 p.m.

Group Cycling - Senses Fitness Center - 4:00 p.m.

Fab Abs - Senses Fitness Center - 5:00 p.m.

Fitness Frenzy (13-17, Nom. Fee) - Senses Fitness Center - 7:00 p.m.

TASTING CLASSES

Champagne Tasting (21+) - Ooh La La (Nom. Fee, Pre Book) - 12:15 p.m.

Martini Tasting (21+) - Meridian (Nom. Fee Pre Book) - 1:00 p.m.

New World Wine Tasting (21+) - Ooh La La (Nom. Fee, Pre Book) - 1:45 p.m.

Rum Tasting (21+) - Meridian (Nom. Fee Pre Book) - 3:00 p.m.

Tequila & Margarita Tasting (21+) - Ooh La La (Nom. Fee, Pre Book) - 4:45 p.m.

Whiskey Tasting (21+) - Cove Cafe (Nom. Fee, Pre Book) - 10:00 p.m.

Cognac Tasting (21+) - Meridian (Nom. Fee Pre Book) - 10:30 p.m.

Please make reservations for tastings at Guest Services for a nominal fee.

Tasting Seminars are only for Guests 21 and Older.



CLUB 18*21 - LUNCH

Royal Court, Deck 3, Midship - 12:00 p.m.

CLUB 18*21 - GIANT JENGA

O'Gills Pub, Deck 4, Aft - 4:00 p.m.

CLUB 18*21 - MIXER

The Tube, Deck 4, Aft - 10:00 p.m.



ESPN DREAM TEAM DRAFT DAY - BASEBALL

O'Gills Pub, Deck 4, Aft - 11:15 a.m.

Play ball! Join the "Commissioner" and engage in this interactive fantasy baseball draft unlike anything you've ever seen! Can YOU draft the greatest baseball team of All-Time?

TV TUNES TRIVIA

La Piazza, Deck 4, Aft - 2:00 p.m.

Determine just how much you know about your television theme tunes.

LIVE MUSIC WITH DARIA & ROBERTO

La Piazza, Deck 4, Aft - 9:45 p.m. & 10:45 p.m.

Join Daria and Roberto as they play live for your listening pleasure.

DIAMOND JACKPOT BINGO

D Lounge, Deck 4, Midship

Card Sales - 10:45 a.m.

Game Starts - 11:00 a.m.

Join us for 4 cash prize games and your chance to win a Diamond Pendant! Everyone attending will also receive a voucher to collect a free Diamonds International charm bracelet!

DOUBLE UP JACKPOT BINGO

D Lounge, Deck 4, Midship

Card Sales - 4:00 p.m.

Game Starts - 4:15 p.m.

Special double up session: All electronic cards purchased will be doubled! The snowball jackpot continues to grow and could be won today!



YOUTH ACTIVITIES HIGHLIGHTS

DINE & PLAY

A convenience for families dining at 8:15 p.m., our Youth Activities Counselors will be available at 9:15 p.m. at the entrance of Royal Court, Enchanted Garden and Animator's Palate dining rooms to bring registered children to join the fun in the Youth Activity areas.



Deck 5, Midship (7-1440)
(3-12 years old) 9:00 a.m. - 12:00 mid

ALOHA LUAU

10:30 a.m.

It's party time, Hawaiian style! Come join us for a Luau experience and learn how to dance like Lilo & Stitch.

TOY STORY BOOT CAMP

3:00 p.m.

Join Corporal Green in our own version of boot camp as we learn how to have fun - The Toy Story way!



Deck 5, Midship (7-1445)
(3-12 years old) 9:00 a.m. - 1:00 a.m.

SUPER SLOPPY SCIENCE

10:30 a.m.

Join Professor Make-O-Mess in some of the most extreme experiments you will ever see in the world of Super Sloppy Science!

GET THE HOOK

4:15 p.m.

A villainous villain has stolen Captain Hook's prized golden hook. Become a member of the Top Deck Detective Agency and help solve the clues to retrieve Hook's hook.



Deck 13, Midship (7-9743)
(11-14 years old) 9:00 a.m. - 1:00 a.m.

FLUBBER

2:00 p.m.

Encounter solid, liquid, gas and make "Flubber-like Goo".

THAT'S HILARIOUS

9:45 p.m.

Ever wanted to show off your comedy skills? Then be a part of the cast for the crazy improv show "That's Hilarious" and put on a live show for your friends.



Entrance on Deck 4, Forward (7-9418)
(14-17 years old) 9:00 a.m. - 2:00 a.m.

ZOMBIFIED

1:30 p.m.

A big movie producer is looking for zombies to help him film the finale to his latest masterpiece, Zombified.

ESPN DREAM TEAM DRAFT DAY - BASKETBALL

7:15 p.m.

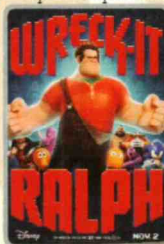
Join the "Commissioner" and engage in this interactive fantasy basketball draft unlike anything you've ever seen! Can YOU draft the greatest basketball team of All-Time?

BUENA VISTA THEATRE

Today's Movies

OC - Open Captioning

DOLBY 3D



8:30 a.m.
Duration:
1 hr 53 mins
Rating: PG



10:45 a.m.
Duration:
1 hr 32 mins
Rating: PG



3:00 p.m.
Duration:
1 hr 43 mins
Rating: G



5:00 p.m. & 8:00 p.m.
Duration: 2 hrs 29 mins
Rating: PG-13



11:00 p.m.
Duration: 1 hr 32 mins
Rating: PG

Disney Cruise Line ANYONE CAN COOK

Culinary Series



From our galley to yours.
Join our chefs as they
show you how to prepare
delicious dishes.

Today's Menu
Apple Strudel

D Lounge,
Deck 4, Midship,
2:15 p.m.



ADULT VARIETY ACT

Star of the Disney Channel
Show SNAP, Hypnotist
Ricky Kalmon brings you the
only adult exclusive comedy
show where the audience
becomes the stars!

Walt Disney Theatre (18+),
Deck 3, Forward,
10:30 p.m.
(Doors open at 10:15 p.m.)

YOUTH ACTIVITIES OPEN HOUSE

Open House is an opportunity for all to come and participate in a variety of exciting activities and free time in the Oceaneer Club, Oceaneer Lab, It's A Small World Nursery, Vibe and Edge throughout the cruise. During these times secured programming will still be offered in the other venue for those looking to check their children into care.

Disney's Oceaneer Club: 9:00 a.m. - 10:00 a.m. & 1:00 p.m. - 2:30 p.m.
Vibe: 9:00 a.m. - 10:30 a.m. & 6:30 p.m. - 8:30 p.m.
Edge: 9:00 a.m. - 10:00 a.m. & 5:00 p.m. - 6:30 p.m.

MORE TO ENJOY WHILE ONBOARD



DISNEY VACATION CLUB® GROUP PREVIEW

Want to learn more about taking magical vacations year after year? Please see a Disney Vacation Club representative on Deck 4, Midship, or call 7-2805 from your stateroom phone for more information about our interactive group presentation.

PLAN YOUR NEXT CRUISE

Another Disney Cruise Line vacation is in your future! Book a future cruise today and you'll save 10%, receive up to a \$200 onboard credit, and pay a reduced deposit! Visit the Future Cruise Sales Desk, Deck 4, Midship. Book by 8:30 p.m. Monday for a chance to win \$100 Onboard Credit for this cruise!

PORT AND SHOPPING INFORMATION

Learn about the incredible shopping in the Caribbean at the Port and Shopping Show at 1:45 p.m. in the Buena Vista Theatre, Deck 4 Fwd. Everything will be covered from Diamonds to T-Shirts, Watches to Tanzanite. A FREE Charm Bracelet and a chance to win a Diamond Pendant for all in attendance! The first 100 guest in will receive a Ship Charm. Also don't miss the Fine Watch Seminar to learn the difference between a \$10 watch and \$100 watch 4:15 p.m. La Piazza Deck 4 Aft.



SENSES
SPA & SALON

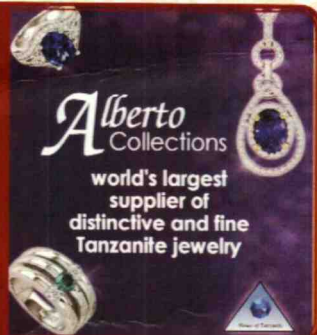
SPA SPECIAL

IONITHERMY

Would you like to lose between 1 - 8 inches?
Speed up your metabolism?
Firm your muscle tone?
Improve appearance of cellulite?
If so, then Ionithermy is the best treatment for you!
50 min. \$155

ALBERTO TRUNK SHOW

House of Tanzanite special trunk show of fine Tanzanite, colored Diamonds, Alexandrite, and Emerald jewelry from classic chic to over the top elegant designs hand made in the US.
This week onboard at Whitecaps.



Alberto
Collections
world's largest
supplier of
distinctive and fine
Tanzanite jewelry

Shutters

FORMAL PORTRAITS TONIGHT!

Moon, Mural & Bow - Six guests maximum please
Grand Staircase & Minnie Statue - Groups accommodated
5:00 p.m. - 6:00 p.m.
7:15 p.m. - 8:30 p.m.
9:30 p.m. - 10:30 p.m.

**Please note that photos are available for viewing on our interactive photo kiosks approximately five hours after being taken and are only available for purchase during this cruise.*

ONBOARD AIRLINE CHECK IN

If you would like to have your boarding passes printed for you onboard and have your luggage taken to the airport for you, register before Wednesday. If you have a Disney Cruise Line airport transfer to Orlando International Airport and fly with one of the participating airlines, stop at Guest Services, Deck 3, Midship to register.

ARR-CADE

Where can you be a ninja, play the guitar like a rock star, race a car down the streets of Tokyo and along the way WIN some great prizes? Arr-CADE located Deck 11, Aft where the pirates play.

FREE ON DEMAND TV

Watch Disney movies, Hollywood features, ABC Shows, and even captioned content, plus much more "On Demand" for FREE in the comfort of your stateroom! Bookmark your movie and come back to watch it later. Press MENU on your stateroom television remote control, and follow the prompts.

Disney Cruise Line PORT ADVENTURES

Limited spaces are available for our most popular tours, so visit the Port Adventures Desk today to reserve your place. Why not explore the Chacchoben Mayan Ruins in Costa Maya, an awe-inspiring reminder of this fascinating civilization. For the families, we offer Dolphin experiences in Grand Cayman, Costa Maya and Cozumel, so why not let this cruise be the time to enjoy this once in a lifetime experience.

SHOPPING

ALBERTO COLLECTIONS -

GUESS THE CARAT WEIGHT & WIN GEMSTONES!

Guess the Carat Weight of one of our exquisite tanzanite pieces 9:30 a.m. - 7:00 p.m. Whoever guesses closest wins free Gemstones! Winners announced at 7:30 p.m. Must be present to win! Whitecaps, Deck 3, Forward. This offer is not affiliated with Disney Cruise Line.

THOMAS KINKADE: HIDDEN CHARACTER CHALLENGE!

Known as the "Painter of Light," Thomas Kinkade is one Disney's most celebrated artists having created an array of enchanting artwork. Stop by the Vista Gallery today to view his unique collection of paintings featuring some your favorite Disney characters! Also, take the time to try and find all of the hidden Disney characters scattered throughout his paintings. Are you up to the challenge? Deck 4, Midship.

ALBERTO COLLECTIONS - HOUSE OF TANZANITE

Visit Whitecaps today where you will discover elegant jewelry designs by Alberto Collections House of Tanzanite, the world's largest supplier of distinctive and fine tanzanite jewelry. Deck 3, Forward.

GOING ONCE, GOING TWICE, SOLD!

Don't miss the live auction by Blue Gallery where you'll have the opportunity to take home beautiful artwork from an array of internationally renowned artists. Also take the time to visit the Vista Gallery, Deck 4 Midship, and receive up to 50% off of US Retail Prices on Blue Gallery Artwork. FREE artwork will be given to the first 100 Guests attending the Live Auction. The Tube, Deck 4, Aft.

ROYAL COURT ROYAL TEA

Hear ye, hear ye! Princes and Princesses are welcomed to join some of your favorite Disney Princesses at the Royal Court Royal Tea for an afternoon filled with music, fun, and delicious goodies! Stop by the Guest Services Desk, Deck 3, Midship, to register and to learn more about this royal event. Reservations required. Fee will apply. Limited space available.

IMPORTANT INFORMATION

Security Notice

All Guests (including children) who wish to disembark the ship are required to present their Key to the World card at the gangway. A photo ID is also required for those Guests who are 18 years of age or older. Guests under the age of 18 are required to have a Parent, Guardian or other responsible adult sign an authorization form at the time it is given out if they wish to go ashore unaccompanied. Authorization forms are available at the gangways and Guest Services.

Please Note:

Please remember to use plenty of sunscreen and mosquito repellent when venturing ashore.

Cold and Flu Reminder

Please wash hands frequently and thoroughly, particularly before meals. Contact the Health Center by dialing 7-1923, should anyone in your party become ill.

Corridor Quiet Hours

As a courtesy to all our Guests, please recognize quiet hallway hours from 10:00 p.m. to 8:00 a.m.

Inclement Weather

For the safety of all Guests, outdoor events may be changed due to unforeseen weather conditions.

Environmental Message

With Disney's commitment to the Environment, please refrain from throwing anything over the Ship's side. Thank you!

No Reserved Seats Policy

As a courtesy to all our Guests, we kindly advise that the saving of seats is not permitted in the Walt Disney Theatre, and the saving of the sun loungers is not permitted on Deck 11, 12, and 13. Items left unattended will be returned to lost and found at Guest Services, Deck 3 Midship.

Smoking

For the comfort of our guests the following areas are designated as Smoking areas: - Promenade Deck (Deck 4), smoking is permitted Port Side, Aft only from 6:00 p.m. to 6:00 a.m.
- Currents - Deck 13, Forward, Port Side.
- Meridian Bar - Deck 12, Aft, Port Side, outside.
Smoking is prohibited inside all guest staterooms. Guests found smoking in their staterooms will be charged a \$250 stateroom recovery fee. Electronic cigarettes may only be used in designated smoking areas.

Walt Disney Theatre

Theatrical performances may use artificial fog, strobe lights, pyrotechnics and other special effects. For the safety of our performers and the comfort of those around you, the use of any photography, video recording device or any electronic equipment is prohibited.

Verandah Safety

Please do not leave any combustible materials on your balcony when not present in your stateroom for safety reasons.

Morning	8:30	8:45	9:00	9:15	9:30	9:45	10:00	10:15	10:30	10:45	11:00	11:15	11:30	11:45	12:00	12:15	12:30	12:45	1:00	1:15	1:30			
FUNNEL VISION	A Goofy Movie (G) Funnel Vision				Aladdin (G) Funnel Vision				Disney Movie Challenge Poolside Funnel Vision															
BUENA VISTA THEATRE	Wreck-It Ralph PG (PG) - With Open Captioning Duration: 1 Hour 53 Minutes								Planes (PG) Duration: 1 Hour 32 Minutes															
CHARACTER	Daisy Dk 4, Balcony				Princess Gathering Lobby Atrium				Minnie Dk 4, Balcony				Sofia Dk 4, Balcony				Goofy Goofy's Sports Deck				Chip & Dale Dk 4, Balcony	Max Goofy's Sports Deck		
FUN FOR ALL AGES	Disney Junior D Lounge		Interdenominational Service Outlook		Toddler Time Goofy's Sports Deck		Bingo Pre Sales		Diamond Jackpot Bingo D Lounge		Family Crafts - Door Hangers La Piazza		Disney Animation: Creating a Character D Lounge		Disney Movie Challenge Poolside Deck Stage, Deck 11, Midship									
ADULTS	Open House It's A Small World Nursery < Starts at 8:00 p.m.		Walking Ship Tour Meet at Preludes		Family Crafts: 3D Crafts La Piazza		Disney Animation: Creating a Character D Lounge		Disney Trivia La Piazza		Walking Ship Tour Meet at Preludes		Disney Vacation Club Group Preview The Tube		Family Crafts - Paper Plane Making La Piazza									
VIBE 14-17 YEARS OLD	Friends of Bill W. Outlook				XBox® Kinect™ - Wipeout O'Gills Pub				Crafts - Tile Coasters O'Gills Pub				ESPN Dream Team Draft Day - Baseball O'Gills Pub				Disney Vacation Club Group Preview The Tube				Family Crafts - Paper Plane Making La Piazza			
EDGE 11-14 YEARS OLD	Boot Camp (Nom. Fee) Senses Fitness Center				Art of The Theme Show Tour Pre-Book at Guest Services				Detox For Health and Weight Loss Senses Spa & Salon				Club 18*21 - Lunch Royal Court				Singles Lunch Royal Court				Martini Tasting (21+) Meridian (Nom. Fee Pre Book)			
OCEANEER LAB 3-12 YEARS OLD	Youth Activities Open House				Coffee Break				Sun Deck Fun								Zombified							
OCEANEER CLUB 3-12 YEARS OLD	Youth Activities Open House				Check Out The Navigator You Created!																			
OCEANEER LAB 3-12 YEARS OLD	Sitch's Adventure Squad				Super Sloppy Science																			
OCEANEER CLUB 3-12 YEARS OLD	Mickey's Puzzle Playtime				Memory Wall				Aloha Luau				Magic PlayFloor				Lunch							
OCEANEER CLUB 3-12 YEARS OLD	Open House and Registration								Craft Corner								Bingo							
OCEANEER CLUB 3-12 YEARS OLD																	Tinker Bell's Talent Show							
OCEANEER CLUB 3-12 YEARS OLD																	Youth Activities Open House							
Afternoon	1:45	2:00	2:15	2:30	2:45	3:00	3:15	3:30	3:45	4:00	4:15	4:30	4:45	5:00	5:15	5:30	5:45	6:00	6:15	6:30	6:45			
FUNNEL VISION	Oz The Great and Powerful (PG) Funnel Vision										The Princess Diaries (PG) Funnel Vision													
BUENA VISTA THEATRE	Port & Shopping Talk					Monsters University DOLBY 3D (G) Duration: 1 Hour 43 Minutes					The Lone Ranger (PG-13) Duration: 2 Hours 29 Minutes > 7:29 p.m.													
CHARACTER	Mickey Dk 4, Balcony	Goofy Goofy's Sports Deck	Chip & Dale Dk 4, Balcony	Max Goofy's Sports Deck	Pluto Goofy's Sports Deck						Minnie Preludes	Chip & Dale Dk 4, Balcony	Minnie Dk 4, Balcony	Mickey Dk 4, Balcony	Donald Dk 4, Balcony									
FUN FOR ALL AGES	Port & Shopping Talk Buena Vista Theatre		Disney Junior D Lounge - Apple Strudel		Aladdin A MUSICAL SPECTACULAR Walt Disney Theatre		Bingo Pre Sales		Double Up Jackpot Bingo D Lounge		Captain's Welcome Reception Lobby Atrium		Playhouse D Lounge D Lounge		Aladdin A MUSICAL SPECTACULAR Walt Disney Theatre									
ADULTS	Mickey 200 The Tube (Limited Availability)		Disney Tunes Trivia La Piazza		Crafts: Origami Flowers La Piazza		Watch Seminar La Piazza		Live Music with Indigo Sky Lobby Atrium															
VIBE 14-17 YEARS OLD	TV Tunes Trivia La Piazza		70's Music Trivia La Piazza		Posture Analysis Senses Fitness Center		Club 18*21 - Giant Jenga O'Gills Pub		Fab Abs Senses Fitness Center		Tequila & Margarita Tasting (21+) Ooh La La (Nom. Fee, Pre Book)													
EDGE 11-14 YEARS OLD	New World Wine Tasting (21+) Ooh La La (Nom. Fee, Pre Book)		Rum Tasting (21+) Meridian (Nom. Fee, Pre Book)								Books and Magazines available in Cove Cafe													
OCEANEER LAB 3-12 YEARS OLD	Zombified		Dive into DJ'ing		Foosball Tournament		Guitar Hero Challenge		Open House															
OCEANEER CLUB 3-12 YEARS OLD	Flubber		Sports Deck Fun		Youth Activities Open House																			
OCEANEER LAB 3-12 YEARS OLD	Anyone Can Cook		Disney Animation: Creating a Character		Get the Hook						Magic PlayFloor													
OCEANEER CLUB 3-12 YEARS OLD	Games & More		Stop The Boat		Relay Games						GAGA Ball													
OCEANEER CLUB 3-12 YEARS OLD	Youth Activities Open House		Toy Story Boot Camp		Picture This		Games & More		Dinner		Parachute Games													
OCEANEER CLUB 3-12 YEARS OLD	Cruisin' with Crush				Magic PlayFloor						Craft Corner													
Evening	7:00	7:15	7:30	7:45	8:00	8:15	8:30	8:45	9:00	9:15	9:30	9:45	10:00	10:15	10:30	10:45	11:00	11:15	11:30	11:45	12:00			
FUNNEL VISION	NFL Football Funnel Vision																							
BUENA VISTA THEATRE	The Lone Ranger (PG-13) Duration: 2 Hours 29 Minutes										Planes DOLBY 3D (PG) Duration: 1 Hour 32 Minutes > 12:32 a.m.													
CHARACTER	Cinderella Preludes	Mickey Dk 4, Balcony	Donald Dk 4, Balcony	Ariel Preludes						Minnie Preludes	Mickey Dk 4, Balcony													
FUN FOR ALL AGES	Captain's Welcome Reception Lobby Atrium		Club D Dance Party D Lounge		Aladdin A MUSICAL SPECTACULAR Walt Disney Theatre		Club D Dance Party D Lounge		Family Superstar Karaoke D Lounge															
ADULTS	Guest DJ Jon Blak The Tube		So You Think You Know Your Family? The Tube		Family Superstar Karaoke D Lounge		Live Piano with Clara Oman Lobby Atrium		Live Piano with Clara Oman Lobby Atrium															
VIBE 14-17 YEARS OLD	Live Guitar with Tony Delaney O'Gills Pub		NFL Football O'Gills Pub (Subject to satellite availability)		Guest DJ Jon Blak The Tube		Majority Rules The Tube		The Comedy & Hypnosis of RICKY KALMON Walt Disney Theatre		70's Remix Followed by Guest DJ Jon Blak The Tube													
EDGE 11-14 YEARS OLD	Youth Activities Open House		Pump It Up		Gender Wars																			
OCEANEER LAB 3-12 YEARS OLD	Check Out The Navigator You Created!		Ship Factor		That's Hilarious																			
OCEANEER LAB 3-12 YEARS OLD	Games & More		Detective School		Magic Playfloor																			
OCEANEER CLUB 3-12 YEARS OLD	Disney Cruise Line Trivia		Glow Jam		Four Square																			
OCEANEER CLUB 3-12 YEARS OLD	Once Upon a Time		Craft Corner		Magic PlayFloor																			
OCEANEER CLUB 3-12 YEARS OLD	Scavenger Hunt		Games & More																					

Symbol for activities that will be repeated during the cruise

Youth Activities Open House

Fold along the dotted lines and take me with you so you don't miss any of the fun!

FOLD

IN THE SPOTLIGHT SERIES

SCAVENGE IT! SERIES

JUMP UP! SERIES

CREATE & INVENT SERIES

CLUBHOUSE SERIES

STORYBOOK SERIES

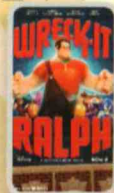
SUNDAY, OCTOBER 27, 2013 - DAY AT SEA

BUENA VISTA THEATRE

CC - Open Captioning

DDOLBY 3D

DDOLBY 3D



8:30 a.m. Duration: 1 hr 53 mins Rating: PG	10:45 a.m. Duration: 1 hr 32 mins Rating: PG	3:00 p.m. Duration: 1 hr 43 mins Rating: G	5:00 & 8:00 p.m. Duration: 2 hrs 29 mins Rating: PG-13	11:00 p.m. Duration: 1 hr 32 mins Rating: PG
--	---	---	---	---

Character Appearances

DAISY DUCK

Deck 4, Balcony - 9:15 a.m.
Lobby Atrium (P)
1:30 p.m. & 2:30 p.m.

PRINCESS GATHERING

Lobby Atrium - 10:00 a.m.

PRINCESS SOFIA

Deck 4, Balcony
10:15 a.m. & 11:30 a.m.

PRINCESS MINNIE

Deck 4, Balcony - 11:00 a.m.

STITCH

Deck 4, Balcony - 12:45 p.m.

GOOFY

Goofy's Sports Deck
1:00 p.m. & 2:00 p.m.
Preludes - 5:15 p.m.

DONALD DUCK

Lobby Atrium (P)
1:00 p.m. & 2:00 p.m.
Deck 4, Balcony
6:00 p.m. & 8:15 p.m.

CHIP & DALE

Deck 4, Balcony - 1:15 p.m.,
2:15 p.m. & 4:30 p.m.

MAX

Goofy's Sports Deck
1:30 p.m. & 2:30 p.m.

MICKEY MOUSE

Deck 4, Balcony - 1:45 p.m.,
2:45 p.m., 5:30 p.m.,
7:45 p.m. & 9:45 p.m.

PLUTO

Goofy's Sports Deck
3:00 p.m. & 4:00 p.m.

MINNIE MOUSE

Preludes - 4:00 p.m.,
5:45 p.m. & 9:30 p.m.
Deck 4, Balcony - 5:00 p.m.,
7:15 p.m. & 10:15 p.m.

CINDERELLA

Preludes - 7:15 p.m.

ARIEL

Preludes - 8:00 p.m.

YOUTH ACTIVITIES THEMED EXPERIENCES

CLUBHOUSE SERIES
focuses on movement and features content which appeals to younger children.

JUMP UP! SERIES
includes large group games & movement-oriented activities.

IN THE SPOTLIGHT SERIES
focuses on children's stage presence with lots of activities and enthusiasm.

STORYBOOK SERIES
is designed with a strong connection to the Disney classic stories.

CREATE & INVENT SERIES
will have a tactile focus allowing children to create and admire their work.

SOLVE IT! SERIES
are less active, but will challenge children with problem/solutions-based activities.

YOUTH ACTIVITIES OPEN HOUSE

A non-secured program with activities for families, adults and children of all ages to enjoy together.

SHIP DIRECTORY

YOUTH ACTIVITIES

DISNEY'S OCEANEER CLUB	DECK 5, MID	9:00 AM - 12:00 MID
DISNEY'S OCEANEER LAB	DECK 5, MID	9:00 AM - 1:00 AM
EDGE	DECK 13, MID	9:00 AM - 1:00 AM
VIBE	DECK 4, FWD	9:00 AM - 2:00 AM
IT'S A SMALL WORLD NURSERY	DECK 5, MID	9:00 AM - 11:30 PM

POOLS & MORE

* Children under 12 must have adult supervision in pool areas.

AQUADUCK	DECK 12, MID	9:00 AM - 11:00 PM
AQUALAB	DECK 12, AFT	10:00 AM - 6:00 PM
DONALD'S POOL	DECK 11, MID	6:00 AM - 12:00 MID
MICKEY'S POOL	DECK 11, MID	6:00 AM - 10:00 PM
MICKEY'S SLIDE	DECK 11, MID	9:00 AM - 6:00 PM
NEMO'S REEF	DECK 11, MID	9:00 AM - 6:00 PM
QUIET COVE POOL	DECK 11, FWD	6:00 AM - 12:00 MID
SATELLITE FALLS	DECK 13, FWD	6:00 AM - 8:00 PM

RECREATION

GOLF/SPORTS SIMULATORS	DECK 13, AFT	9:00 AM - 6:00 PM
GOOFY GOLF	DECK 13, AFT	8:00 AM - 10:00 PM
GOOFY'S SPORTS DECK	DECK 13, AFT	8:00 AM - 6:00 PM
MIDSHIP DETECTIVE AGENCY	DECKS 2 & 5, MID	9:00 AM - 9:00 PM
PORT ADVENTURES DESK	DECK 5, MID	9:00 AM - 5:00 PM 7:00 PM - 8:30 PM
SENSES FITNESS CENTER	DECK 11, FWD	6:30 AM - 10:00 PM

GENERAL INFORMATION

ARR-CADE	DECK 11, AFT	24 HOURS
ADVENTURES BY DISNEY	DECK 4, MID	11:00 AM - 2:00 PM 8:30 PM - 10:00 PM
DISNEY VACATION CLUB	DECK 4, MID	9:00 AM - 11:00 PM
FUTURE CRUISE SALES DESK	DECK 4, MID	10:00 AM - 12:00 PM 2:00 PM - 6:00 PM 7:30 PM - 8:30 PM
GUEST SERVICES	DECK 3, MID	24 HOURS
MEDICAL HEALTH CENTER	DECK 1, FWD	9:30 AM - 11:00 AM 4:30 PM - 7:00 PM
PORT & SHOPPING DESK	DECK 4, MID	7:30 PM - 8:30 PM
PRELUDES	DECK 3, FWD	2:30 PM - 3:15 PM 5:45 PM - 6:30 PM 8:00 PM - 8:45 PM
SENSES SPA AND SALON	DECK 11, FWD	8:00 AM - 10:00 PM
SHUTTERS PHOTO GALLERY	DECK 4, MID	9:30 AM - 12:30 PM 7:00 PM - 11:00 PM
SHUTTERS DIGITAL	DECK 4, MID	24 HOURS

SHOPPING

BIBBIDI BOBBIDI BOUTIQUE	DECK 5, MID	9:00 AM - 9:00 PM
MICKEY'S MAINSAIL	DECK 3, FWD	9:30 AM - 11:00 PM
QUACKS	DECK 11, MID	10:00 AM - 4:00 PM
SEA TREASURES	DECK 3, FWD	9:30 AM - 11:00 PM
VISTA GALLERY	DECK 4, MID	10:00 AM - 10:00 PM
WHITECAPS	DECK 3, FWD	9:30 AM - 11:00 PM
WHOZITS & WHATZITS	DECK 11, MID	10:00 AM - 4:00 PM

DINNER MENU

Animator's Palate: Pacific Rim Cuisine
Enchanted Garden: Continental Market Cuisine
Royal Court: French Cuisine
Dining Times: 5:45 p.m. & 8:15 p.m.

DRINK OF THE DAY

Bahama Mama (Alcoholic)
Coco Bali (Non Alcoholic)

WEATHER FORECAST

Sunday: Cloudy
High: 77°F/25°C
Monday: Cloudy
High: 82°F/28°C

Evening Attire: Formal

DINING & LOUNGES

BREAKFAST

CABANAS CONTINENTAL	DECK 11, AFT	7:00 AM - 7:30 AM
CABANAS	DECK 11, AFT	7:30 AM - 11:30 AM
ENCHANTED GARDEN	DECK 2, MID	8:30 AM - 10:45 AM
ROYAL COURT	DECK 3, MID	8:00 AM - 9:30 AM

LUNCH

CABANAS	DECK 11, AFT	11:30 AM - 2:00 PM
FILMORE'S FAVORITES	DECK 11, MID	11:00 AM - 6:00 PM
LUIGI'S PIZZA	DECK 11, MID	11:00 AM - 6:00 PM
ROYAL COURT	DECK 3, MID	12:00 PM - 1:30 PM
TOW MATER'S GRILL	DECK 11, MID	11:00 AM - 11:00 PM

DINNER

ANIMATOR'S PALATE	DECK 3, AFT	5:45 PM & 8:15 PM
ENCHANTED GARDEN	DECK 2, MID	5:45 PM & 8:15 PM
ROYAL COURT	DECK 3, MID	5:45 PM & 8:15 PM
CABANAS TABLE SERVICE	DECK 11, AFT	6:30 PM - 8:30 PM
PALO (18+) (RESERVATIONS REQ. & NON-FEE APPLIES)	DECK 12, AFT	6:00 PM - 8:30 PM
REMY (18+) (RESERVATIONS REQ. & NON-FEE APPLIES)	DECK 12, AFT	6:00 PM - 8:30 PM

LATE NIGHT SNACKS

LA PIAZZA (18+)	DECK 4, AFT	10:45 PM - 11:45 PM
LUIGI'S PIZZA	DECK 11, MID	9:30 PM - 12:30 AM

ADDED FEATURES

BEVERAGE STATION	DECK 11, MID	24 HOURS
EYE SCREAM	DECK 11, MID	11:00 AM - 11:00 PM
ROOM SERVICE	DIAL 0	24 HOURS

ENTERTAINMENT - LOUNGES - BARS

Adults must be 21 and older to consume alcoholic beverages.

BON VOYAGE	DECK 3, MID	9:00 AM - 11:00 PM
COVE BAR (18+)	DECK 11, FWD	10:00 AM - 11:00 PM
COVE CAFE (18+)	DECK 11, FWD	7:00 AM - 12:00 MID
CURRENTS (18+)	DECK 13, FWD	10:00 AM - 11:00 PM
D LOUNGE	DECK 4, MID	SHOWTIMES
FROZONE TREATS	DECK 11, MID	10:00 AM - 10:30 PM
LA PIAZZA	DECK 4, AFT	3:00 PM - 12:00 MID
MERIDIAN (18+)	DECK 12, AFT	10:00 AM - 12:00 MID
O'GILLS PUB (18+ AFTER 9:00 PM)	DECK 4, AFT	12:00 PM - 12:00 MID
OOH LA LA (18+)	DECK 4, AFT	5:30 PM - 12:00 MID
OUTLOOK	DECK 14, MID	SUNSET TIMES
SKYLINE (18+)	DECK 4, AFT	5:30 PM - 1:00 AM
THE TUBE (18+)	DECK 4, AFT	9:30 PM - 2:00 AM
VISTA CAFE	DECK 4, MID	7:00 AM - 11:00 PM
WAVES	DECK 12, AFT	10:00 AM - 6:00 PM

Consumers who order raw or partially cooked, ready-to-eat food of animal origin, are hereby informed that the food is not sufficiently cooked to ensure its safety.



TIME ZONE CHANGE

Remember to turn your clocks **BACK 1 HOUR** upon retiring on **SUNDAY** evening, or first thing **MONDAY** morning.

IMPORTANT NUMBERS

Fire/Security: 7-3001
Medical Emergency: 7-3000
Health Center: 7-1923

(H) Hallway - (S) Starboard Side - (P) Port Side - (V) Vestibule
For details of daily Disney character appearances, refer to the character line on your Navigator Grid, or the digital character board in the Lobby Atrium.

DISNEY