

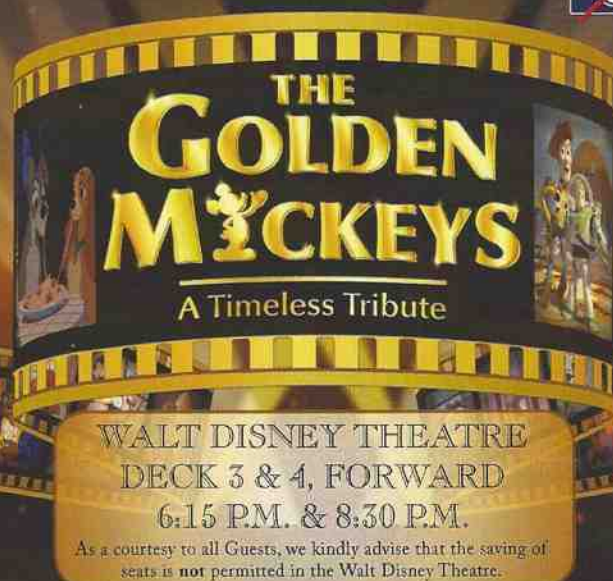
PERSONAL NAVIGATOR

THURSDAY, SEPTEMBER 26, 2013

Sunrise: 7:14 a.m. Sunset: 7:11 p.m.
Evening Attire: Cruise Casual
All Aboard: 3:45 p.m.

Thursday: Sunny High: 80°F/27°C
Friday: Sunny High: 78°F/26°C

PORT CANAVERAL, FLORIDA



As a courtesy to all Guests, we kindly advise that the saving of seats is **not** permitted in the Walt Disney Theatre.



Assistance available at the entrance to the Walt Disney Theatre 30 minutes prior to show time.

Welcome Aboard!

Your Stateroom & Luggage

Staterooms will be ready at 1:30 p.m. Stateroom hosts will deliver luggage throughout the day until 5:30 p.m.

Staterooms with Bunk Beds

Bunk beds are recessed into the ceiling and will be prepared during evening turndown service by your Stateroom Host/ess.

Stateroom Safe

Each stateroom is equipped with a secured storage safe. Instructions for use are located on the safe.

To Change Dining Assignment

Requests for a different seating will be taken today:

- 1:00 p.m. - 3:30 p.m.; Book in Royal Palace
- 3:30 p.m. - 4:30 p.m.; Please call 7-1831, 7-1832, or 7-1833

Remy & Palo Dining Reservations

Bookings will be taken on a first come basis today at:

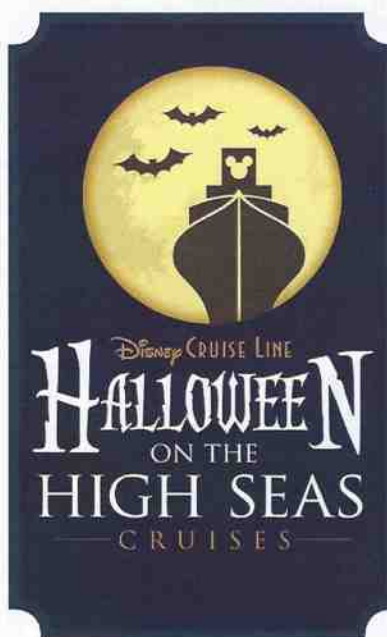
- 1:00 p.m. - 3:30 p.m., Palo; Book in Royal Palace
- 1:00 p.m. - 3:30 p.m., Remy; Book in Royal Palace

Reservations required & cover charge applicable. Please dial 7-9734, or 7-9735 for more information. Openings still available for tonight!

Dinner

Please check your dining tickets for details of your dining rotation, and bring them to your specific dining location. There is no need to wait in line prior to dinner. Dining Rooms open at designated seating times and your table is reserved each night of your cruise.

- 5:45 p.m. - First seating
- 8:15 p.m. - Second seating



Don't Miss:

Walking Ship Tour

Meet at Preludes, Deck 3, Forward - 1:00 p.m. & 2:00 p.m.
(El tour del barco en Español sale a la 1:30 p.m. desde Preludes, Piso 3, Forward)

Enjoy the beauty of the Disney Dream with your Cruise Staff in this guided tour.

Sailing Away

Deck Stage, Deck 11, Midship - 4:30 p.m.

It's time to go Sailing Away! Join Mickey and Minnie, along with Tinker Bell and the rest of the gang, as they welcome you aboard the Disney Dream.

The Pumpkin Tree - Pumpkin Seed

Lobby Atrium, Deck 3, Midship - 7:30 p.m.

Do you know why we celebrate Halloween? Or why we carve jack-o-lanterns? Then join the Caretaker at the Pumpkin Tree, and hear some fun stories and customs of Halloween. Also make sure to bring your pumpkin seed with you. There'll be some spooky surprises, and we promise a ghostly good time.

Match Your Mate (18+)

Evolution, Deck 4, Aft - 10:30 p.m.

It's time to play everyone's favorite couples game show - Match Your Mate!



GET THE PICTURE!

Visit Shutters today and ask your friendly Shutters staff about the GET THE PICTURE! Unlimited digital package which includes all your stateroom photo on one photo disc. For best value, upgrade to include all printed photos, too! Visit Shutters on Deck 4, Midship for more information. Don't wait until the last day. Beat the rush and order yours now! Terms and conditions apply.

DINNER MENU

Animator's Palate: Pacific Rim Cuisine
Enchanted Garden: Continental Market
Royal Palace: French Dinner

DRINK OF THE DAY

Paradise Cocktail (Alcoholic)
Espresso Chiller (Non Alcoholic)

IMPORTANT NUMBERS

Fire/Security: 7-3001
Medical Emergency: 7-3000
Health Center: 7-1923

FAMILY ACTIVITY HIGHLIGHTS

FAMILY SUPERSTAR KARAOKE

D Lounge, Deck 4, Midship - 9:30 p.m. & 11:15 p.m.

Join your Cruise Staff in D Lounge tonight and sing along to your favorite song - fun for everyone.

SALUDOS AMIGOS FIESTA

D Lounge, Deck 4, Midship - 10:45 p.m.

Come see what Donald and his friends are up to this time. Bring the family out to this interactive dance party featuring fun Latin music! Your family will learn to Salsa, Merengue and just have a Latin good time!



CRUISE HIGHLIGHTS

Thursday

PORT CANAVERAL

Port Departure: 4:45 pm

All Aboard: 3:45 pm

Attire: Cruise Casual

THE GOLDEN MICKEYS

Walt Disney Theatre

6:15 p.m. & 8:30 p.m.

Friday

NASSAU

All Ashore: 9:30 am

All Aboard: 6:00 pm

Attire: Halloween / Pirate or Cruise Casual

VILLAINS TONIGHT!

Walt Disney Theatre

6:15 p.m. & 8:30 p.m.

Saturday

DISNEY'S CASTAWAY CAY

All Ashore: 8:30 am

All Aboard: 5:00 pm

Attire: Optional Dress Up

DISNEY'S BELIEVE

Walt Disney Theatre

6:15 p.m. & 8:30 p.m.

Subject to change.

ADULT ACTIVITY HIGHLIGHTS



FITNESS CLASSES

Senses Spa and Salon has a variety of seminars and fitness classes available throughout the cruise.

Spa Tours - Senses Spa & Salon, 12:00 p.m. - 4:00 p.m.

Spa Raffle - Senses Spa & Salon, 3:00 p.m.

Complimentary Foot Print Analysis - Senses Fitness Center, 4:30 p.m.

Kids Me! Bath Puddi Party - Senses Spa & Salon, 4:30 p.m.

Discover Acupuncture - Senses Spa & Salon, 5:30 p.m.

BEVERAGE SEMINARS

Your Beverage team has a host of tastings and seminars to entertain and educate you. Stop by Guest Services, Deck 3, Midship to pre-book these experiences (nominal fee applies). Tasting Seminars are only for Guests 21 and Older.

*Whiskey Tasting - Wine Tasting - Martini Tasting
Cognac Tasting - Tequila & Margarita Tasting - Mixology*



CLUB 18*21 - ICE BREAKER

Evolution, Deck 4, Aft - 10:00 p.m.

Club 18*21 is an exclusive gathering for young adult Guests. Come meet fellow cruisers and learn about the great activities Disney has to offer to help create the perfect cruise experience.

LIVE MUSIC WITH THE GET UPS

District Lounge, Deck 4, Aft - 7:30 p.m., 9:30 p.m., 10:30 p.m. & 11:15 p.m.
Join The Get Ups as they play live for your listening pleasure.



REWIND FEATURING GUEST DJ AKSHEN

Evolution, Deck 4, Aft - 11:15 p.m.

Join your Club Host, Robin, and the Cruise Staff as our Guest DJ Akshen plays amazing mixes of your favorite 70's and 80's tunes - it'll be like being back in college again!



DIAMOND JACKPOT BINGO

D Lounge, Deck 4, Midship

Card Sales - 7:30 p.m.

Game Starts - 7:45 p.m.

Join us for 4 cash prize games and your chance to win a Diamond Pendant! Everyone attending will also receive a voucher to collect a free Diamonds International charm bracelet! Complete the Big X in 20 numbers or less, and \$500 could be yours. If not we continue to play for the highest cash prize of the session!



YOUTH ACTIVITIES HIGHLIGHTS



Deck 5, Midship (7-5864) 5:30 p.m. - 12:00 mid
Infants and Toddlers can enjoy toys and activities at It's A Small World Nursery. Reservations are first come, first served so please stop by!



Deck 5, Midship (7-1440)
6:45 p.m. - 12:00 mid



Deck 5, Midship (7-1445)
5:30 p.m. - 12:30 a.m.

REGISTRATION FOR 3-12 YEAR OLDS

Meet the Youth Activities Team in the Oceaneer Lab and Oceaneer Club, complete your registration & learn all about the Themed Experiences this cruise!

CLUBHOUSE SERIES - The Clubhouse Themed Experiences focus on movement and feature content which appeals to younger children. *Recommended for children seven years and younger.*

STORYBOOK SERIES - The Storybook Series Themed Experiences are designed with a strong connection to the Disney classic stories. *Recommended for children seven years and younger.*

JUMP UP! SERIES - The Let's Move! Themed Experiences will include large group games & movement-oriented activities.

CREATE & INVENT SERIES - The Create & Invent Themed Experiences will have a tactile focus allowing children to create and admire their work.

IN THE SPOTLIGHT SERIES - The In The Spotlight Themed Experiences focus on children's stage presence with lots of activities and enthusiasm. *Recommended for children seven years and older.*

SOLVE IT! SERIES - The Solve It! Themed Experiences are less active, but will challenge children with problem/solutions-based activities. *Recommended for children seven years and older.*

YOUTH ACTIVITIES OPEN HOUSE - Activities for families, adults and children of all ages to enjoy together.

Dine & Play

A convenience for families dining at 8:15 p.m., our Youth Activities Counselors will be available at 9:15 p.m. at the entrance of Royal Palace, Enchanted Garden and Animator's Palate dining rooms to bring registered children to join the fun in the Youth Activity areas.



Deck 13, Midship (7-9743) 6:00 p.m. - 1:00 a.m.

(11-14 YEAR OLDS)

Edge is an interactive play space where you can play video games, watch television and participate in arts and crafts with kids your own age.

TAKING IT TO THE EDGE

10:00 p.m.

Come to Edge and get all the info you need to squeeze every bit of fun out of your stay onboard.



Entrance on Deck 4, Forward (7-9417)

6:00 p.m. - 1:00 a.m.

(14-17 YEAR OLDS)

THE DOWNLOAD

10:30 p.m.

Come up to Vibe and help plan all the fun activities you will be doing this cruise with your new friends!

BUENA VISTA THEATRE

Feature Movies this Voyage

THURSDAY - PORT CANAVERAL

5:15 p.m. PG-13 The Lone Ranger

8:15 p.m. PG-13 The Lone Ranger

11:00 p.m. PG Planes

DOLBY 3D

FRIDAY - NASSAU

11:00 a.m. PG Planes

DOLBY 3D

1:00 p.m. G Monsters University

Open Captioning

3:30 p.m. PG Planes

5:45 p.m. G Monsters University

DOLBY 3D

8:30 p.m. G Monsters University

DOLBY 3D

11:00 p.m. PG-13 Iron Man 3

DOLBY 3D

SATURDAY - DISNEY'S CASTAWAY CAY

8:30 a.m. PG Planes

10:30 a.m. PG-13 Iron Man 3

DOLBY 3D

1:00 p.m. G Monsters University

3:30 p.m. PG Planes

5:45 p.m. PG Planes

DOLBY 3D

8:15 p.m. PG Planes

DOLBY 3D

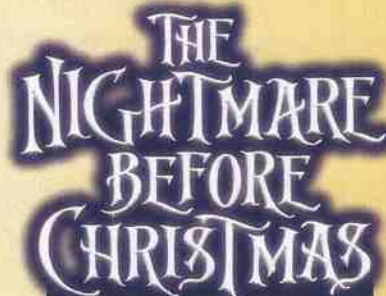
10:15 p.m. PG-13 The Lone Ranger

Subject to change.



Join the Magic Mirror and Dopey in the fairest game show of them all, Mirror, Mirror. There's trivia, singing and even a relay race. Hi Ho, Hi Ho, its off to play we go!

**D Lounge,
Deck 4, Midship,
10:15 p.m.**



You're invited to a special presentation of Tim Burton's popular classic, presented in 3-D. Featuring state-of-the-art projection, sound and in-theatre effects, you become part of the experience, as you sing and scream along. You never know who may show up.

**Walt Disney Theatre,
Deck 3, Forward,
10:30 p.m.**

YOUTH ACTIVITIES OPEN HOUSE

Open House is an opportunity for all to come and participate in a variety of exciting activities and free time in It's A Small World Nursery, the Oceaneer Club, Oceaneer Lab, Edge and Vibe throughout the cruise. During these times secured programming will still be offered in the other venues for those looking to check their children into care.

MORE TO ENJOY WHILE ONBOARD

PLAN YOUR NEXT CRUISE

Book a future cruise today and you'll save 10%, receive up to a \$200 onboard credit, and pay a reduced deposit! Tune to Channel 8 on your stateroom TV for details and visit the Future Cruise Sales Desk, Deck 4, Midship.

PORT & SHOPPING TALK

Join your Shopping Guides Edel and Damien today at 2:45 p.m. in the Buena Vista Theatre to learn about the incredible shopping ashore in Nassau! Over \$1,000 in give-a-ways and prizes! Arrive early for free gifts and more!

DISNEY VACATION CLUB® MEMBERS CELEBRATION

Members! Mix and mingle with other Members and learn how you can enhance your Membership! Please see a Disney Vacation Club representative on Deck 4, Midship, or call 7-2805 from your stateroom phone for more information.



RAINFOREST DELUXE CRUISE PASS

Enjoy our scented showers, aroma steam, sauna rooms and private jacuzzi overlooking the ocean. Also, read a nice book on the warm loungers! Unlimited entry when you purchase your cruise pass today!

Couples \$102.00 and Singles \$69.00
Limited number of passes on sale!

Senses Spa & Salon, Deck 11, Forward
Ext. 7-1465

PROVENANCE GEMS PRESENTS: THE EXTRAORDINARY COLOR CHANGING GEMSTONE ZULTANITE

Join Bipin Hundani from Provenance Gems in Whitecaps to learn about his amazing collections. Come see one of the rarest stones in the world and experience its color changing qualities. Also try your hand in the Guess the Carat Weight competition and have the chance of winning a jewelry prize. Offer not affiliated with Disney Cruise Line.

WHITECAPS
Deck 3, Forward



SAY CHEESE!

Professional Portraits, Lobby Atrium, Deck 3, Midship.

Lifestyle - Six Guests maximum

7:15 p.m. - 8:30 p.m. & 9:30 p.m. - 10:15 p.m.

Larger Groups - Please contact the Shutters team on Deck 4 for an appointment

*Please note that photos are available for viewing on our interactive photo kiosks approximately five hours after being taken and are only available for purchase during this cruise.

BEVERAGE SEMINARS AT SEA

Indulge in the world of beverage! Our beverage team is sharing all their secrets about your favorite drinks. Please visit District Lounge between 12:00 p.m. and 3:30 p.m. to secure your spot. Tasting seminars are for Guests 21 and over. Limited availability.

THREE-NIGHT WINE PACKAGES:

THE CLASSIC WINE PACKAGE & THE PREMIUM WINE PACKAGE

These three-night packages entitle you to select fine wines from our specially designed wine list with up to 25% savings over regular prices. Your dining server will provide more details.

WIRELESS INTERNET: KEEPING YOU CONNECTED AT SEA

\$0.75 per minute, or save money by buying blocks of time. \$27.50 for 50 minutes, \$40 for 100 minutes and \$75 for 250 minutes. Wireless information sheets are available at Guest Services, Deck 3, Midship. **Please note: Due to satellite connectivity, onboard internet service will be noticeably slower than you may be accustomed to and may at times be interrupted or unavailable.**

Disney Cruise Line

PORT ADVENTURES

From a visit to the world-renowned Atlantis Resort in Nassau to Parasailing high above the turquoise waters around Castaway Cay, there is an adventure for everyone on your Disney Dream cruise. Visit the friendly team at the Port Adventures Desk, Deck 5, Midship, to learn more about these, and many more Port Adventures.

Port Adventures Desk, Deck 5, Midship

SHOPPING

MAGICAL MAKEOVERS WITH GLITTER & GO

Fairy Godmothers-in-Training have boarded the Disney Dream and are anxiously waiting to give you a sparkly transformation with the Glitter & Go makeover experience. Guests ages 3-12 will have the opportunity to allow their inner princess to shine through! All royal makeovers and everything you need to meet the Disney Princesses in style can be found tonight at Mickey's Mainsail, Deck 3, Forward.

VISTA GALLERY FINE ART

Come experience the Storytellers collection featuring art from the influential and inspired artists of the Walt Disney Animation Studios. Also view pieces from the silent auction that will close on the final night of the cruise. Vista Gallery, Deck 4, Midship.

TAX AND DUTY FREE HIGHLIGHT

A great range of jewelry, fragrances, and liquor all at competitive prices is available. Find the TAG Heuer watch to suit your style from our onboard collection. Whitecaps, Deck 3, Forward.

SHOPPING TIP

You may collect items from all three Deck 3, Forward shops before proceeding to any register. Once you have spent \$25.00, you may purchase a Disney Cruise Line towel for \$14.95. Once you have spent \$30.00, you may purchase a Disney Cruise Line duffle bag for \$17.95. While supplies last. Room delivery is available upon request.

IMPORTANT NOTICE FOR NASSAU

Please note that it is important to get all of your shipboard, poolside, and island essentials this evening as tomorrow our merchandise locations will not open until after we have left the port. This is due to port regulations, so please consider your needs for tomorrow today.

INTRODUCING DISNEY INSPIRED JEWELRY BY SOPHIA FIORI

Sophia Fiori, one of the world's leading designers of diamond jewelry, is introducing their new Disney inspired diamond jewelry collection. Available now onboard for a limited time, stop by Whitecaps to view how Sophia Fiori makes some of your favorite Disney icons shine. Whitecaps, Deck 3, Forward.

Due to port regulations, when the ship is docked, the stores will remain closed.

IMPORTANT INFORMATION

Security Notice

All Guests (including children) who wish to disembark the ship are required to present their Key to the World card at the gangway. A photo ID is also required for those Guests who are 18 years of age or older. Guests under the age of 18 are required to have a Parent, Guardian or other responsible adult sign an authorization form at the time it is given out if they wish to go ashore unaccompanied. Authorization forms are available at the gangways and Guest Services.

Cold and Flu Reminder

Please wash hands frequently and thoroughly, particularly before meals. Contact the Health Center by dialing 7-1923, should anyone in your party become ill.

Corridor Quiet Hours

As a courtesy to all our Guests, please recognize quiet hallway hours from 10:00 p.m. to 8:00 a.m.

Inclement Weather

For the safety of all Guests, outdoor events may be changed due to unforeseen weather conditions.

Environmental Message

With Disney's commitment to the environment, please refrain from throwing anything over the ship's side. Thank you!

No Reserved Seats Policy

As a courtesy to all our Guests, we kindly advise that the saving of seats is not permitted in the Walt Disney Theatre, and the saving of the sun loungers is not permitted on Deck 11, 12 and 13. Items left unattended will be returned to lost and found at Guest Services, Deck 3, Midship.

Smoking

For the comfort of our guests the following areas are designated as Smoking areas:

- Deck 13, Forward, port side, by "Currents"
- Deck 12, Aft, port side outdoor area that is accessible through the Meridian Lounge
- Deck 4, Aft, port side from 6:00 p.m. to 6:00 a.m. only (all of Deck 4 is no smoking from 6:00 a.m. to 6:00 p.m.)

Smoking is permitted on stateroom verandahs. Smoking is prohibited inside all guest staterooms. Guests found smoking in their staterooms will be charged a \$250 stateroom recovery fee. Electronic cigarettes may only be used in designated smoking areas.

Walt Disney Theatre

Theatrical performances may use artificial fog, strobe lights, pyrotechnics and other special effects. For the safety of our performers and the comfort of those around you, the use of any photography, video recording devices or any electronic equipment is prohibited.

Verandah Safety

Please do not leave any combustible materials on your balcony when not present in your stateroom for safety reasons.

BUENA VISTA THEATRE

DOLBY 3D



5:15 p.m. & 8:15 p.m.
Duration: 2 hrs 29 mins
Rating: PG-13



11:00 p.m.
Duration: 1 hr 32 mins
Rating: PG

Character Appearances

SAILING AWAY!

Deck Stage,
Deck 11, Midship
4:30 p.m.

MICKEY MOUSE

Lobby Atrium (H)
8:00 p.m.
Deck 4, Balcony
9:30 p.m.

MINNIE MOUSE

Lobby Atrium (V)
8:00 p.m.

DONALD DUCK

Lobby Atrium (H)
9:15 p.m.

GOOFY

Lobby Atrium (V)
9:30 p.m.



(H) Hallway - (S) Starboard Side - (P) Port Side - (V) Vestibule

For details of daily Disney character appearances, refer to the character line on your Navigator Grid, or the digital character board in the Lobby Atrium.

YOUTH ACTIVITIES THEMED EXPERIENCES

CLUBHOUSE SERIES
focuses on movement and features content which appeals to younger children.

STORYBOOK SERIES
is designed with a strong connection to the Disney classic stories.

JUMP UP! SERIES
includes large group games & movement-oriented activities.

CREATE & INVENT SERIES
will have a tactile focus allowing children to create and admire their work.

OPEN HOUSE

are activities for families, adults and children of all ages to enjoy together.

IN THE SPOTLIGHT SERIES
focuses on children's stage presence with lots of activities and enthusiasm.

SOLVE IT! SERIES
are less active, but will challenge children with problem/solutions-based activities.

SHIP DIRECTORY

YOUTH ACTIVITIES

DISNEY'S OCEANEER CLUB	DECK 5, MID	6:45 PM - 12:00 MID
DISNEY'S OCEANEER LAB	DECK 5, MID	5:30 PM - 12:30 AM
EDGE	DECK 13, MID	6:00 PM - 1:00 AM
VIBE	DECK 4, FWD	6:00 PM - 1:00 AM
IT'S A SMALL WORLD NURSERY	DECK 5, MID	5:30 PM - 12:00 MID

POOLS

*Children under 12 years of age must have adult supervision in all pools.

DONALD'S POOL	DECK 11, MID	12:00 PM - 3:30 PM
		8:00 PM - 10:00 PM
MICKEY'S POOL	DECK 11, MID	11:45 AM - 12:00 MID
QUIET COVE POOL	DECK 11, FWD	12:00 PM - 12:00 MID

RECREATION

AQUADUCK	DECK 12, MID	12:30 PM - 3:00 PM
		4:30 PM - 11:00 PM
GOLF/SPORTS SIMULATORS	DECK 13, AFT	12:30 PM - 3:30 PM
		4:30 PM - 6:00 PM
GOOFY GOLF	DECK 13, AFT	5:30 PM - 10:00 PM
GOOFY'S SPORTS DECK	DECK 13, AFT	11:30 AM - 6:00 PM
MICKEY'S SLIDE	DECK 11, MID	12:00 PM - 3:30 PM
		4:30 PM - 6:00 PM
MIDSHIP DETECTIVE AGENCY	DECK 5, MID	12:00 PM - 11:00 PM
NEMO'S REEF	DECK 11, MID	12:00 PM - 3:30 PM
		4:30 PM - 7:00 PM
PORT ADVENTURES DESK	DECK 5, MID	12:00 PM - 3:30 PM
		4:30 PM - 6:00 PM
		7:00 PM - 10:00 PM
SENSES FITNESS CENTER	DECK 11, FWD	12:00 PM - 10:00 PM

GENERAL INFORMATION

ARR-CADE	DECK 11, AFT	24 HOURS
BUENA VISTA THEATRE	DECK 4 & 5, MID	SHOWTIMES
DISNEY VACATION CLUB	DECK 4, MID	5:00 PM - 10:00 PM
FUTURE CRUISE SALES DESK	DECK 4, MID	6:00 PM - 8:00 PM
GUEST SERVICES	DECK 3, MID	24 HOURS
HAIRBRAIDING	DECK 11, MID	4:30 PM - 10:00 PM
MEDICAL HEALTH CENTER	DECK 1, FWD	4:30 PM - 7:00 PM
PORT & SHOPPING DESK	DECK 4, MID	6:00 PM - 9:00 PM
PRELUDES	DECK 3, FWD	5:45 PM - 8:30 PM
		8:00 PM - 8:45 PM
SENSES SPA AND SALON	DECK 11, FWD	6:00 PM - 8:00 PM
SHUTTERS PHOTO GALLERY	DECK 4, MID	7:00 PM - 11:00 PM
WALT DISNEY THEATRE	DECK 3 & 4, FWD	SHOWTIMES

SHOPPING

MICKEY'S MAINSAIL	DECK 3, FWD	6:00 PM - 11:00 PM
SEA TREASURES	DECK 3, FWD	6:00 PM - 11:00 PM
QUACKS	DECK 11, MID	
VISTA GALLERY	DECK 4, MID	6:00 PM - 11:00 PM
WHITECAPS	DECK 3, FWD	6:00 PM - 11:00 PM
WHOZITS & WHATZITS	DECK 11, MID	6:15 PM - 10:00 PM

DUE TO PORT REGULATIONS, WHEN THE SHIP IS DOCKED, THE STORES MUST REMAIN CLOSED.

DINING

Enchanted Garden: Continental Market
Royal Palace: French Dinner
Dining Times: 5:45 p.m. & 8:15 p.m.

DRINK

(Alcoholic)
Espresso Chiller
(Non Alcoholic)

WEATHER FORECAST

High: 80°F/27°C
Friday: Sunny
High: 78°F/26°C

Evening Attire: Cruise Casual

DINING & LOUNGES

LUNCH

CABANAS	DECK 11, AFT	11:45 AM - 3:00 PM
ENCHANTED GARDEN	DECK 2, MID	12:15 PM - 2:00 PM
FILLMORE'S FAVORITES	DECK 11, MID	12:00 PM - 3:15 PM
		4:30 PM - 6:00 PM
LUIGI'S PIZZA	DECK 11, MID	12:00 PM - 3:15 PM
		4:30 PM - 6:00 PM
TOW MATER'S GRILL	DECK 11, MID	12:00 PM - 3:15 PM
		4:30 PM - 6:00 PM

DINNER

ANIMATOR'S PALATE	DECK 3, AFT	5:45 PM & 8:15 PM
ENCHANTED GARDEN	DECK 2, MID	5:45 PM & 8:15 PM
ROYAL PALACE	DECK 3, MID	5:45 PM & 8:15 PM
TOW MATER'S GRILL	DECK 11, MID	6:00 PM - 11:00 PM
PALO & REMY (18+)	DECK 12, AFT	6:00 PM - 9:00 PM

(RESERVATIONS REQUIRED & COVER CHARGE APPLICABLE, DIAL #7-9734)

LATE-NIGHT SNACKS

LUIGI'S PIZZA	DECK 11, MID	9:30 PM - 12:00 MID
THE DISTRICT	DECK 4, AFT	10:45 PM - 11:45 PM

ADDED FEATURES

BEVERAGE STATION	DECK 11, MID	24 HOURS
EYE SCREAM	DECK 11, MID	12:00 PM - 12:00 MID
ROOM SERVICE	DIAL 0	24 HOURS

ENTERTAINMENT - LOUNGES - BARS

Adults must be 21 and older to consume alcoholic beverages.

687 PUB	DECK 4, AFT	12:00 PM - 9:00 PM
687 PUB (18+)	DECK 4, AFT	9:00 PM - 12:00 MID
BON VOYAGE	DECK 3, MID	11:30 AM - 11:00 PM
COVE BAR (18+)	DECK 11, FWD	11:30 AM - 11:00 PM
COVE CAFE (18+)	DECK 11, FWD	11:30 AM - 12:00 MID
CURRENTS (18+)	DECK 13, FWD	12:00 PM - 11:00 PM
D LOUNGE	DECK 4, MID	SHOWTIMES
DISTRICT LOUNGE	DECK 4, AFT	12:00 PM - 9:00 PM
DISTRICT LOUNGE (18+)	DECK 4, AFT	9:00 PM - 12:00 MID
EVOLUTION (18+)	DECK 4, AFT	9:30 PM - 2:00 AM
FROZONE TREATS	DECK 11, MID	11:30 AM - 11:00 PM
MERIDIAN (18+)	DECK 12, AFT	5:00 PM - 12:00 MID
OUTLOOK	DECK 14, MID	
PINK (18+)	DECK 4, AFT	5:00 PM - 12:00 MID
SKYLINE (18+)	DECK 4, AFT	5:00 PM - 12:00 MID
VISTA CAFE	DECK 4, MID	12:00 PM - 11:00 PM
WAVES	DECK 12, AFT	12:00 PM - 7:00 PM

Consumers who order raw or partially cooked, ready-to-eat food of animal origin, are hereby informed that the food is not sufficiently cooked to ensure its safety.



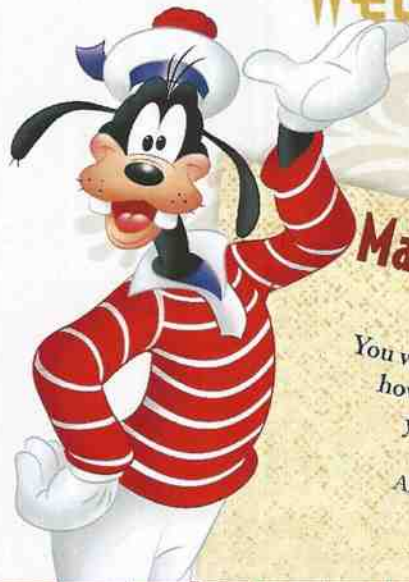
MIDSHIP DETECTIVE AGENCY

Use your detective know-how and our special detective "badge" to search the ship and catch your criminal! Deck 5, Midship Kiosks.

IMPORTANT NUMBERS

Fire/Security: 7-3001
Medical Emergency: 7-3000
Health Center: 7-1923

WELCOME ABOARD!



Mandatory Life Boat Drill

4:00 PM

(All Guests must attend)
You will not need to wear your life jacket,
however it is critical that you bring
your Key To The World card
to your Assembly Station.
All ship services will be suspended
between 3:45 and 4:30 p.m.

Your Assembly Station
is indicated on your
Key To The World card.



SAILING AWAY

It's time to go Sailing Away!
Join Mickey and Minnie along
with Tinker Bell and the rest of
the gang as they welcome you
aboard the Disney Dream.

4:30 p.m.
Deck Stage
Deck 11, Midship

Afternoon	1:45	2:00	2:15	2:30	2:45	3:00	3:15	3:30	3:45	4:00	4:15	4:30	4:45	5:00	5:15	5:30	5:45	6:00	6:15	6:30	6:45
FUNNEL VISION	Virtual Tours Funnel Vision																				Toy Story (G) Funnel Vision
BUENA VISTA THEATRE					Port & Shopping Talk																The Lone Ranger (PG-13) Duration: 2 Hours 29 Minutes
CHARACTER																					
FUN FOR ALL AGES		Walking Ship Tour <small>Meet at Portside (Earlier Tour starts at 1:00 pm)</small>		Port & Shopping Talk Buena Vista Theatre																	
		Poolside Jams with DJ Marius Deck Stage, Deck 11, Midship																			
				Disney Vacation Club Members Celebration D Lounge																	
ADULTS																					
VIBE 14-17 YEARS OLD																					
EDGE 11-14 YEARS OLD																					
OCEANEER LAB 3-12 YEARS OLD																					
OCEANEER CLUB 3-12 YEARS OLD																					

All ship services will
be suspended during
this time for the
mandatory
Boat Drill scheduled
for 4:00 p.m.

Please refer to the posted
drill instructions prior to
heading to your Assembly
Station.



Kids Mel/Bath Paddi Party
Senses Spa & Salon

Footprint Analysis
Senses Fitness Center

Live Music with Matt Bruno
Quiet Cove

Acupuncture Seminar
Senses Spa & Salon

Youth Activities Open House

Youth Activities Open House

Youth Activities Open House and Registration

Youth Activities Open House and Registration - "Magic Playfloor" - 6:00 p.m. - 6:30 p.m.

Live Music with The Dreamers
Lobby Atrium

Red Carpet Arrivals
Preludes

THE GOLDEN MICKKEYS
A Timeless Tribute
Walt Disney Theatre

Open for Teens

Open for Tweens

Celebrity Heads

Open for Secured Activities

Disney Cruise Line HALLOWEEN ON THE HIGH SEAS CRUISES

Evening	7:00	7:15	7:30	7:45	8:00	8:15	8:30	8:45	9:00	9:15	9:30	9:45	10:00	10:15	10:30	10:45	11:00	11:15	11:30	11:45	12:00
FUNNEL VISION																					
BUENA VISTA THEATRE																					
CHARACTER																					
FUN FOR ALL AGES																					
ADULTS																					
VIBE 14-17 YEARS OLD																					
EDGE 11-14 YEARS OLD																					
OCEANEER LAB 3-12 YEARS OLD																					
OCEANEER CLUB 3-12 YEARS OLD																					

NFL Football - San Francisco 49ers vs. St. Louis Rams
Funnel Vision (Subject to satellite availability)

The Lone Ranger (PG-13)
Duration: 2 Hours 29 Minutes

Planes (PG) DOLBY 3D
Duration: 1 Hour 32 Minutes

Mickey
Lobby Atrium (H)

Donald
Lobby Atrium (H)

Goofy
Lobby Atrium (H)

Minnie
Lobby Atrium (H)

Mickey
DK 4, Balcony



Family Superstar Karaoke
D Lounge



-SING AND SCREAM-
Walt Disney Theatre

70's Music Trivia
687 Pub

NFL Football - San Francisco 49ers vs. St. Louis Rams
687 Pub (Subject to satellite availability)

Club 18*21 - Ice Breaker
Evolution

Saludos Amigos Fiesta
D Lounge

Family Superstar Karaoke
D Lounge

Live Music with Matt Bruno
Quiet Cove

DJ Marius
Evolution

Matt Bruno LIVE
Quiet Cove

Evolution

Rewind Featuring Guest DJ Akshen
District Lounge

Open for Teens

Game Challenge

Ice Breakers

The Download

Magic Show

Celebrity Heads

Profiles

Ice Breakers

Taking it to The Edge

Choose Your Cruise

Chill Time

Choose Your Cruise

Human Bingo

Meet Your Counselors

Magic Playfloor

Get the Hook

Open for Secured Activities

Toy Story Boot Camp

Choose Your Cruise

Magic Playfloor

Memory Wall

Symbol for activities that will
be repeated during the cruise

Fold along the dotted lines and take me with you
so you don't miss any of the fun!

FOLD

IN THE SPECIAL SERIES
SOLVE IT SERIES

CLIMB UP SERIES
CREATE & HOIST SERIES

CLIMB UP SERIES
STORYBOOK SERIES