

PERSONAL NAVIGATOR

SUNDAY, SEPTEMBER 22, 2013

Sunrise: 6:08 a.m. Sunset: 6:08 p.m.
Evening Attire: Cruise Casual

Sunday: Partly Cloudy High: 87°F/30°C

PANAMA CANAL

MOVIE SPECIAL

Walt Disney Theatre
Deck 4, Forward
in **DOLBY 3D**

3:30 P.M.,
5:45 P.M.
& 8:15 P.M.

RATED (PG)

1 HOUR 32 MINUTES

As a courtesy to all Guests, we kindly advise that the saving of seats is not permitted in the Walt Disney Theatre.

Assistance available at the entrance to the Walt Disney Theatre 30 minutes prior to show time.



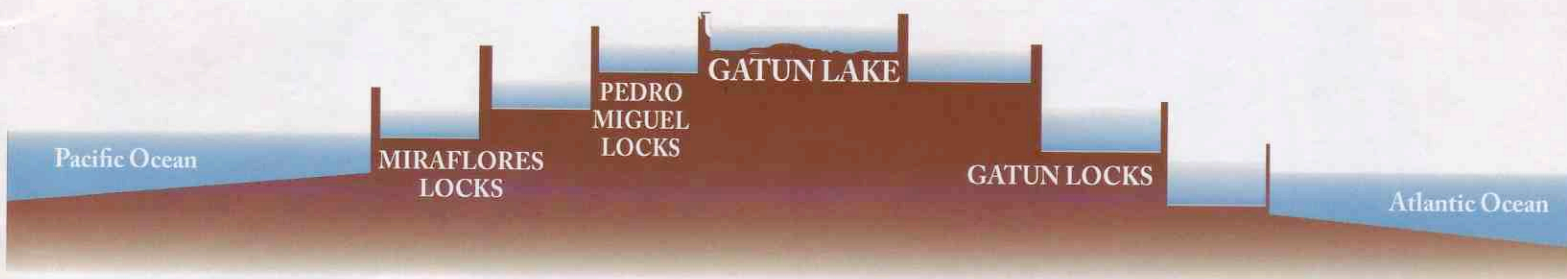
PANAMA CANAL TRANSIT INFORMATION

Estimated time of departure Balboa:(Passing under bridge of Americas)	Approx. 5:30 a.m.
Arriving Miraflores Locks:	Approx. 7:00 a.m.
Departing Miraflores Locks:	Approx. 8:10 a.m.
Arriving Pedro Miguel Locks:	Approx. 9:00 a.m.
Departing Pedro Miguel Locks:	Approx. 9:50 a.m.
Passing Gamboa:	Approx. 10:55 a.m.
Arriving Gatun Locks:	Approx. 12:55 p.m.
Departing Gatun Locks:	Approx. 3:30 p.m.

BRIDGE CAMERA AND PANAMA CANAL NARRATION

Available on Channel 251 in your stateroom.

Above is a tentative schedule, which is subject to change depending on traffic and weather. Wheelchair accessible viewing is available on Deck 9, Forward, Portside.



DINNER MENU

Animator's Palate: Panama Menu
Parrot Cay: Panama Menu
Triton's: Panama Menu

DRINK OF THE DAY

Panama Hat (Alcoholic)
Mango Pango (Non Alcoholic)

IMPORTANT NUMBERS

Fire/Security: 7-3001
Medical Emergency: 7-3000
Health Center: 7-1923

FUN FOR ALL AGES HIGHLIGHTS

INTERDENOMINATIONAL SERVICE

Cadillac Lounge, Deck 3, Forward - 8:30 a.m.

A quiet space reserved for Guests who wish to come together to worship.



WAKE UP WITH DISNEY JUNIOR

Promenade Lounge, Deck 3, Aft - 9:00 a.m.

What happens when you experience unlimited fun with your favorite Disney Junior shows? You get an exciting dance party designed especially for preschoolers ages seven and under.

MICKEY 200

Wavebands, Deck 3, Forward - 10:00 a.m.

Don't eat your vegetables... race them in this wild and wacky charge to the finish line. May the best veggie win! (Limited Availability)

PANAMA CANAL EXPERIENCE

Deck 9 & 10, Midship - 10:30 a.m.

Join us on the open decks for live music and character visits (Weather Permitting). Also narration from the Bridge as we pass through the Panama Canal.

PANAMA CANAL TRIVIA

Promenade Lounge, Deck 3, Aft - 11:00 a.m.

Join your Cruise Staff and test your knowledge on the Panama Canal.

FAMILY CRAFTS: TILE COASTERS

Animator's Palate, Deck 3, Aft - 11:30 a.m.

Join your Cruise Staff and create tile coasters that are yours to keep.

SWIM THROUGH THE PANAMA CANAL

Goofy's Pool, Deck 9, Midship - 3:15 p.m.

Join us for this fun event where we will recognize your achievements of "Swimming through the Panama Canal".



ADULT ACTIVITY HIGHLIGHTS

VISTA SPA FITNESS CLASSES & SEMINARS



Sunrise Stretch - Vista Spa Fitness Center - 7:00 a.m.

Body Sculpt Boot Camp - Vista Spa Fitness Center - 7:30 a.m.

AB Attack - Vista Spa Fitness Center - 8:30 a.m.

Seminar: Improving Your Posture-Walk in Comfort - Outlook Cafe - 10:00 a.m.

Tongue & Pulse Analysis - Vista Spa Fitness Center - 10:15 a.m.

Facial Workshop - Vista Spa Fitness Center - 3:00 p.m.

Complimentary Footprint Analysis - Vista Spa & Salon - 4:00 p.m.

Yoga - Vista Spa Fitness Center - 5:00 p.m.

TASTING CLASSES

Malt Whisky Tasting (21+) - Outlook Cafe - 10:30 p.m.

Please make reservations for tastings at Guest Services for a nominal fee.

Tasting Seminars are only for Guests 21 and Older.

DISNEY'S INNOVATIONS: THEME PARKS

Diversions, Deck 3, Forward - 10:15 a.m.

Join us for our presentation showing the "Top 10" greatest innovations that the Walt Disney Company has introduced to theme parks.

LIVE MUSIC WITH GAYLA SMITH

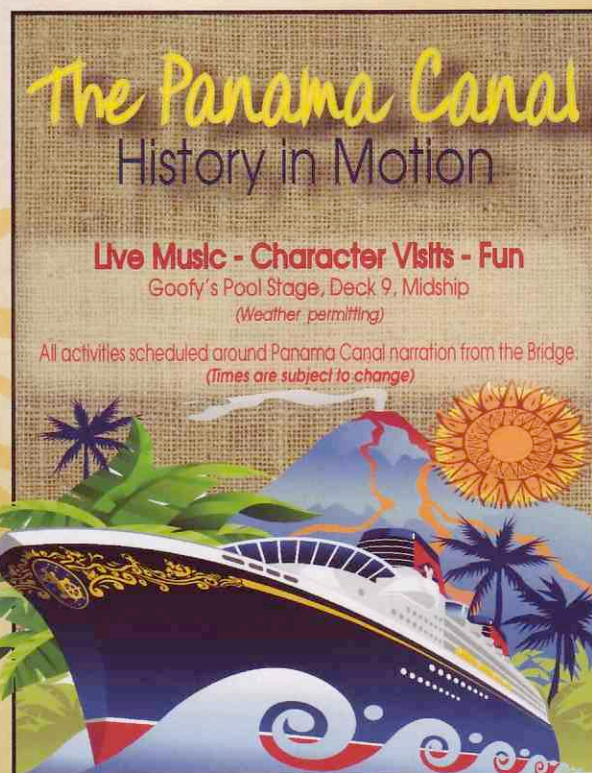
Cadillac Lounge, Deck 3, Forward - 7:30 p.m., 9:30 p.m., 10:30 p.m. & 11:30 p.m.

Join Gayla Smith as she plays live for your listening pleasure.

ROCK 'N' BOWL

Wavebands, Deck 3, Forward - 10:30 p.m.

Join your Club Host Simon and DJ Kevin for Rock 'n' Roll music and Wii Bowling. Oh yes, it's going to be fun!



YOUTH ACTIVITIES HIGHLIGHTS

DINE & PLAY

A convenience for families dining at 8:15 p.m., our Youth Activities Counselors will be available at 9:15 p.m. at the entrance of Triton's, Parrot Cay and Animator's Palate dining rooms to bring registered children to join the fun in the Oceaneer Club and Oceaneer Lab.



Deck 5, Aft (7-18500) 9:00 a.m. - 11:00 p.m.

Infants and Toddlers can enjoy toys and activities at Flounder's Reef Nursery. Reservations are first come, first served so please stop by!



Deck 5, Midship (7-1440) 9:00 a.m. - 12:00 mid
(3 - 12 years old)

HATS OFF TO PETER PAN

9:30 a.m.

You'll believe you can fly. All it takes is faith, trust, and pixie dust and a special visit from Peter Pan! Rediscover the magic of Neverland!

SWINGIN' LIKE TARZAN

1:30 p.m.

Trashin' the camp like Terk, sketching like Jane, sliding like Tarzan, and giving the best jungle yell will be some of the activities for your children in this adventure.



Deck 5, Midship (7-1445) 9:00 a.m. - 10:30 p.m.
(3 - 12 years old) 10:30 p.m. - 12:00 mid (Adults Only)

SHAKE IT UP!

9:30 a.m.

You've seen the show; now come learn the move to one of the most popular dances of the summer!

DETECTIVE SCHOOL

11:00 a.m.

It's a crime how much fun you'll have as you go CSI Goofy Style.



Deck 2, Midship (7-5810) 10:00 a.m. - 11:00 p.m.
(11 - 14 years old) 11:30 p.m. - 1:00 am (Adults Only)

DISNEY CRUISE LINE TRIVIA

8:30 p.m.

Test your Disney knowledge at this wacky trivia contest.

POOL PARTY

10:00 p.m.

Enjoy a friendly competition at a private pool party under the stars.



Deck 11, Midship (7-18517) 10:00 a.m. - 12:00 p.m. (Adults Only)
12:00 p.m. - 2:00 am

PUMP IT UP

9:00 p.m.

Join us in the Fitness Center for a Teen Only workout. Meet in Vibe to join in!

POOL PARTY

11:00 p.m.

Enjoy a friendly competition at a private pool party under the stars.

BUENA VISTA THEATRE

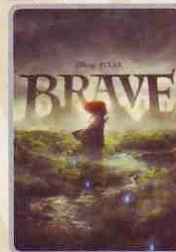
Today's Movies

OC - Open Captioning

DOLBY 3D



8:30 a.m.
Duration:
1 hr 15 mins
Rating: G



10:30 a.m.
Duration:
1 hr 41 mins
Rating: PG



12:30 p.m.
Duration:
1 hr 40 mins
Rating: G

DOLBY 3D



2:30 p.m.
Duration:
2 hrs 13 mins
Rating: PG-13



5:00 p.m. & 8:00 p.m.
Duration: 2 hrs 29 mins
Rating: PG-13



10:45 p.m.
Duration: 1 hr 43 mins
Rating: G

MICKEY 200

FAMILY CRAFTS

Don't eat your vegetables... race them in this wild and wacky charge to the finish line. May the best veggie win! (Limited Availability)

**Wavebands,
Deck 3, Forward,
10:00 a.m.**

Generation Game

FAMILY GAME SHOW

Join your Cruise Staff team for our kids vs. adults game show featuring a series of challenges and tasks. Who will be the champion in our battle of the generations?

**Studio Sea,
Deck 4, Midship,
7:30 p.m.**

YOUTH ACTIVITIES OPEN HOUSE

Open House is an opportunity for all to come and participate in a variety of exciting activities and free time in the Oceaneer Club, Oceaneer Lab, Flounder's Reef Nursery, Vibe and Edge throughout the cruise. During these times secured programming will still be offered in the other venue for those looking to check their children into care.

Vibe: 12:00 p.m. - 3:00 p.m. **Disney's Oceaneer Club:** 9:00 a.m. - 12:00 p.m.
Edge: 10:00 a.m. - 12:00 p.m.

MORE TO ENJOY WHILE ONBOARD



DISNEY VACATION CLUB® GROUP PREVIEW

Want to learn more about taking magical vacations year after year? Please see a Disney Vacation Club representative on Deck 4, Midship, or call 7-2805 from your stateroom phone for more information about our interactive group presentation.



BOOK NOW AND SAVE!

To find out more and how to save up to 10% off your next cruise, stop by the Future Cruise Sales Desk, Deck 4, Midship, or call 7-2848.



PORT SHOPPING GUIDE

For all of your Cartagena Port and Shopping Information, don't forget to visit the Port and Shopping Desk tonight between 7:30 p.m. - 8:30 p.m. on Deck 3, Midship.

EXPRESS CHECK OUT

If you have a credit card on file, you qualify for express check out. No need to visit Guest Services to settle your account.



VISTA SPA

Deck 9, Forward - Phone: 7-1465

IONTHERMIE SUPER DETOX

Lose 1-8 inches instantly!
Receive your Ionthermie Super Detox treatment today and receive \$30 off.

Today Only: 50 minutes only \$155

TODAY'S SHOPPING SPECIAL

Stop by Treasure Ketch to try on the world's most memorable white diamond pieces and commemorate your cruise. Ask the hosts about 50% savings off US retail.

TREASURE KETCH

Deck 4, Forward



GET OUT AND ABOUT

Your professional photographers will be available on Decks 9 and 10 to take pictures of family, friends and your favorite Disney characters with the Panama Canal in the background - weather permitting.

WIRELESS INTERNET: KEEPING YOU CONNECTED AT SEA

\$0.75 per minute or save money by buying blocks of time. \$55 for 100 minutes, \$100 for 250 minutes and \$150 for 500 minutes. Wireless information sheets are available at Guest Services, Deck 3, Midship, Internet Cafe, Deck 3, Aft, Cove Cafe, Deck 9, Midship and Outlook Cafe, Deck 10, Midship.

Due to the technology involved and satellite connectivity, the onboard internet service will be noticeably slower than you may be accustomed to and might at times be interrupted or unavailable.

CARE FREE TRAVEL OPTION

Visit Guest Services on Deck 3, Midship, to book shuttle service from our port back to George Bush Houston Intercontinental Airport. Cost is \$45.00 per person and may be booked up until 12:00 midday on the second from last day of the cruise. There will be one shuttle departure to William P. Hobby Airport. Departure from the bus depot will be at 9 a.m., so guests must disembark the ship no later than 8:15 a.m. The cost of the transfer will be \$45 per person.

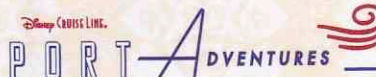
STAMPS

Panamanian stamps and postcards are available at the Guest Services Desk. If you wish to post your letter or postcards, please bring your mail to the Guest Services Desk no later than 2:00 p.m. today.

PASSPORTS

If you would like your passport stamped by the Panamanian Immigration authorities, please bring your passport between 9:30 a.m. and 2:00 p.m. to the Port Adventures Desk, Deck 3, Midship, today.

Disney Cruise Line



Stop by the Port Adventures Desk, Deck 3, Midship, this evening to book your last minute adventures for Cartagena. Explore this Colombian gem, boasting with sights like the Popa Monastery, Fort of San Felipe de Bajas and beaches to relax for the day.

SHOPPING

ESSENTIAL FOSSIL COLLECTION

This season's collection combines color and style to create the perfect must haves from Bags, wallets and watches. Men's and Women's Collections available in Treasure Ketch. Set a trend on Sea or Land!

ART GALLERY

Visit our Art Gallery on Deck 4, Midship from 7:30 p.m. - 9:00 p.m. to view a large selection of Disney art. Giclees on canvas themed pieces from princess movies to your favorite characters in a pirate style!

TIME TO GO WITH MICHAEL KORS WATCHES

Accessories are the exclamation point of an outfit. They are what makes it complete. From Dressed up with classic details thru to Practical and Glamorous there is sure to be a timepiece in this collection to complete your look. Collection available in Treasure Ketch.

SOPHIA FIORI GUESS THE CARAT WEIGHT

Come in to Guess the Carat Weight on a Sophia Fiori Diamond. Whoever guesses the closest wins a 5 carat Midnight Sapphire and a pair of Sapphire Stud Earrings. Guess between 9:00 am to 9:00 pm. The winner will be revealed 9:30 pm in Treasure Ketch Deck 4 Forward. Winner must be present.

GUCCI WATCHES

Gucci Timepieces has been creating watches since the early Seventies, combining Swiss precision and Italian style. Recognized for their design, quality and craftsmanship, the many styles of the maison have become classics for men and women. Collection includes G-Frame and the Twirl, Marina Chain and the G-Gucci line and Gucci Coupé. All timepieces present Gucci icons, such as G-shaped bezels, red-green-red straps, or Horsebit clasps. View the collection in Treasure Ketch, Deck 4, Forward.

IMPORTANT INFORMATION

Security Notice

All Guests (including Children) who wish to disembark or embark the ship are required to present their Key to the World card at the gangway. A photo ID is also required for those Guests who are 18 years of age or older. Guests under the age of 18 are required to have a Parent, Guardian or other responsible adult sign an authorization form at the time it is given out if they wish to go ashore unaccompanied. Authorization forms are available at the gangways and Guest Services.

Cold and Flu Reminder

Please wash hands frequently and thoroughly, particularly before meals. Contact the Health Center by dialing 7-1923, should anyone in your party become ill.

Inclement Weather

For the safety of all Guests, outdoor events may be changed due to unforeseen weather conditions.

Corridor Quiet Hours

As a courtesy to all our Guests, please recognize quiet hallway hours from 10:00 p.m. til 8:00 a.m.

Environmental Message

With Disney's commitment to the Environment please refrain from throwing anything over the Ship's side. Thank you.

No Reserved Seats Policy

As a courtesy to all Guests we kindly advise that the saving of seats is not permitted in the Walt Disney Theatre, and the saving of the sun loungers is not permitted on Deck 9 and 10. Items left unattended will be returned to lost and found at Guest Services, Deck 3, Midship.

Smoking

For the comfort of our Guests the following open deck areas are designated as Smoking areas: Deck 4, Starboard side from 6:00 p.m. to 6:00 a.m. ONLY, Deck 9 Forward Starboard side at Quiet Cove and Deck 10 Starboard side. Smoking is prohibited in all Guest staterooms. Guests found smoking in their staterooms will be charged a \$250. stateroom recovery fee. Electronic cigarettes may only be used in designated smoking areas.

Sunscreen Advisory

Don't forget to apply sunscreen and insect repellent when going ashore.

Walt Disney Theatre

Theatrical performances may use artificial fog, strobe lights, pyrotechnics and other special effects. For the safety of our performers and the comfort of those around you, the use of any photography or video recording device or any electronic equipment is prohibited.

Verandah Safety

Please do not leave any combustible materials on your balcony when not present in your stateroom for safety reasons.

Morning	8:30	8:45	9:00	9:15	9:30	9:45	10:00	10:15	10:30	10:45	11:00	11:15	11:30	11:45	12:00	12:15	12:30	12:45	1:00	1:15	1:30				
FUNNEL VISION										Live Music with Sonic Groove Deck 9, Gazebo			Live Music with Sonic Groove Deck 9, Gazebo			DJ Kevin Live Goofy's Pool									
BUENA VISTA THEATRE	Sleeping Beauty (G) Duration: 1 Hour 15 Minutes						Brave (PG) - With Open Captioning Duration: 1 Hour 41 Minutes						Finding Nemo (G) Duration: 1 Hour 40 Minutes												
CHARACTER	For detailed character appearances, call 7-PALS or refer to the Character Screen in the Lobby Atrium.												Suzy & Perla Lobby Atrium		Pinocchio Lobby Atrium										
													Terk Lobby Atrium		Dopey Lobby Atrium										
FUN FOR ALL AGES	Interdenominational Service Cadillac Lounge							Live Music with Sonic Groove Deck 9, Gazebo			Sonic Groove Live Deck 9, Gazebo														
	Toddler Time <8:00 a.m. Founder's Reef Nursery					Mickey 200 Wavebands			Panama Canal Trivia Promenade Lounge			Family Crafts: Tile Coasters Animator's Palate													
ADULTS	Friends of Bill W. Outlook Cafe						Disney's Innovations: Theme Parks Diversions						Cruise Staff Mix & Mingle Cove Cafe												
	AB Attack Vista Spa Fitness Center						Adults Invade Vibe Vibe																		
VIBE 14-17 YEARS OLD							Adult Exclusive						Youth Activities Open House												
EDGE 11-14 YEARS OLD							Youth Activities Open House																		
OCEANEER LAB 3-12 YEARS OLD					Shake It Up!								Detective School				Lunch				Pinata Party				
OCEANEER CLUB 3-12 YEARS OLD					Youth Activities Open House												Lunch				Swingin' Like Tarzan				
					Hats Off to Peter Pan																				
Afternoon	1:45	2:00	2:15	2:30	2:45	3:00	3:15	3:30	3:45	4:00	4:15	4:30	4:45	5:00	5:15	5:30	5:45	6:00	6:15	6:30	6:45				
FUNNEL VISION																									
BUENA VISTA THEATRE	Phantom of the Opera (PG-13) Duration: 2 Hours 13 Minutes										The Lone Ranger (PG-13) Duration: 2 Hours 29 Minutes														
CHARACTER	For detailed character appearances, call 7-PALS or refer to the Character Screen in the Lobby Atrium. See some of your favorite Disney friends strolling around on the outside decks.																								
FUN FOR ALL AGES					 Walt Disney Theatre (PG)								 Walt Disney Theatre (PG)												
					Swim Through The Panama Canal Goofy's Pool				Theme Park Music Trivia Promenade Lounge																
ADULTS					Footprint Analysis Vista Spa & Salon								Yoga Vista Spa Fitness Center												
	NFL Football: Houston Texans vs. Baltimore Ravens Diversions (Subject to Satellite Availability)										NFL Football: Indianapolis Colts vs. San Francisco 49ers Diversions (Subject to Satellite Availability)														
VIBE 14-17 YEARS OLD	Youth Activities Open House										Sports Deck Fun													Apples to Apples	
EDGE 11-14 YEARS OLD	Smoothie Time										Sports Deck Fun														
OCEANEER LAB 3-12 YEARS OLD	Pinata Party			Pathfinders			Gasses in Action						Dinner						Four Square						
OCEANEER CLUB 3-12 YEARS OLD	Swingin' Like Tarzan					Youth Activities Open House									Dinner						Wishing Upon a Star				
						Royal Crafts			The Royal Ball																
Evening	7:00	7:15	7:30	7:45	8:00	8:15	8:30	8:45	9:00	9:15	9:30	9:45	10:00	10:15	10:30	10:45	11:00	11:15	11:30	11:45	12:00				
FUNNEL VISION	Disney Nature: Oceans (G) Funnel Vision																								
BUENA VISTA THEATRE	The Lone Ranger (PG-13) Duration: 2 Hours 29 Minutes										Monsters University (G) Duration: 1 Hour 43 Minutes														
CHARACTER		Donald Lobby Atrium		Mickey Lobby Atrium								Mickey & Friends Lobby Atrium													
		Daisy Lobby Atrium		Minnie Lobby Atrium								Minnie & Daisy Lobby Atrium													
FUN FOR ALL AGES		Pin Trading Station Preludes	Generation Game Studio Sea		 Walt Disney Theatre (PG)								Disney Disco Studio Sea												
			Party Tunes with Sonic Groove Promenade Lounge		All Request with DJ Kevin Promenade Lounge								Love Songs & Duets with Sonic Groove Promenade Lounge												
ADULTS	NFL Sunday Night Football: Chicago Bears vs. Pittsburgh Steelers Diversions (Subject to Satellite Availability)										Rockin' Country with Time Machine Wavebands				Rock 'N' Bowl Wavebands				DJ Kevin Wavebands						
			Music and Martinis with Gayla Smith Cadillac Lounge								Easy Listening with Gayla Smith Cadillac Lounge				Adult Exclusive: Flubber Disney's Oceaneer Lab				Adults Invade Edge Edge						
VIBE 14-17 YEARS OLD	Apples to Apples						Gender Wars			Pump It Up						Pool Party									
EDGE 11-14 YEARS OLD	Scavenger Hunt						Disney Cruise Line Trivia						Pool Party			Glow Dance Jam									
OCEANEER LAB 3-12 YEARS OLD	Four Square		Oceaneer Rangers						Now a Word From Our Sponsor						Adult Exclusive Open House: Flubber (18+) 10:45 p.m. - 11:45 p.m.										
OCEANEER CLUB 3-12 YEARS OLD	Pluto's Pajama Party						Scavenger Hunt						Glow Jam			Camp Out									

Symbol for activities that will be repeated during the cruise



FOLD

Fold along the dotted lines and take me with you so you don't miss any of the fun!

FOLD

IN THE SPOTLIGHT SERIES

CREATE & INVENT SERIES

OPEN HOUSE

JUMP UP! SERIES

CLUBHOUSE SERIES

STORYBOOK SERIES

SUNDAY, SEPTEMBER 22, 2013 - PANAMA CANAL

BUENA VISTA THEATRE

OC - Open Captioning DOLBY 3D

DOLBY 3D



8:30 a.m. Duration: 1 hr 15 mins Rating: G	10:30 a.m. Duration: 1 hr 41 mins Rating: PG	12:30 p.m. Duration: 1 hr 40 mins Rating: G	2:30 p.m. Duration: 2 hrs 13 mins Rating: PG-13	5:00 p.m. & 8:00 p.m. Duration: 2 hrs 29 mins Rating: PG-13	10:45 p.m. Duration: 1 hr 43 mins Rating: G
--	--	---	---	--	---

Character Appearances

SUZY & PERLA
Lobby Atrium - 11:15 a.m.

MICKEY, DONALD & GOOFO
Lobby Atrium - 10:00 p.m.

TERK
Lobby Atrium - 11:15 a.m.

PINOCCHIO
Lobby Atrium - 11:45 a.m.

DOPEY
Lobby Atrium - 11:45 a.m.

DONALD DUCK
Lobby Atrium - 7:15 p.m.

DAISY DUCK
Lobby Atrium - 7:15 p.m.

MICKEY MOUSE
Lobby Atrium - 7:45 p.m.

MINNIE MOUSE
Lobby Atrium - 7:45 p.m.

MINNIE MOUSE & DAISY
Lobby Atrium - 9:45 p.m.



Don't forget your Camera to capture those Magical Moments!

Check here each day for Character appearances.

For detailed Character appearance information, please dial 7-PALS or see the Character Information Board in the Lobby Atrium.

Meet-and-Greets will be advertised for the length of time the line will be open. To avoid disappointment, please meet at start time of appearances.

YOUTH ACTIVITIES THEMED EXPERIENCES

CLUBHOUSE SERIES
focuses on movement and features content which appeals to younger children.

STORYBOOK SERIES
is designed with a strong connection to the Disney classic stories.

JUMP UP! SERIES
includes large group games & movement-oriented activities.

CREATE & INVENT SERIES
will have a tactile focus allowing children to create and admire their work.

IN THE SPOTLIGHT SERIES
focuses on children's stage presence with lots of activities and enthusiasm.

SOLVE IT! SERIES
are less active, but will challenge children with problem/solutions-based activities.

YOUTH ACTIVITIES OPEN HOUSE

Activities for families, adults and children of all ages to enjoy together.

SHIP DIRECTORY

YOUTH ACTIVITIES

DISNEY'S OCEANEER CLUB	DECK 5, MID	9:00 AM - 12:00 MID
DISNEY'S OCEANEER LAB	DECK 5, MID	9:00 AM - 10:30 PM
	ADULTS ONLY	10:30 PM - 12:00 MID
EDGE	DECK 2, MID	10:00 AM - 11:00 PM
	ADULTS ONLY	11:30 PM - 1:00 AM
VIBE	ADULTS ONLY	10:00 AM - 12:00 PM
	DECK 11, MID	12:00 MID - 2:00 AM
FLOUNDER'S REEF NURSERY	DECK 5, AFT	9:00 AM - 11:00 PM

RECREATION

GOOFOY'S POOL	DECK 9, MID	6:00 AM - 11:00 PM
MICKEY'S POOL	DECK 9, AFT	8:00 AM - 10:00 PM
MICKEY'S SLIDE	DECK 9, AFT	9:00 AM - 5:30 PM
MICKEY'S SPLASH ZONE	DECK 9, AFT	8:00 AM - 8:00 PM
PORT ADVENTURES DESK	DECK 3, MID	6:00 PM - 9:00 PM
QUIET COVE POOL	DECK 9, FWD	6:00 AM - 12:00 MID
VISTA FITNESS CENTER	DECK 9, FWD	6:00 AM - 10:00 PM
WIDE WORLD OF SPORTS DECK	DECK 10, FWD	24 HOURS

GENERAL INFORMATION

BUENA VISTA THEATRE	DECK 5, AFT	SHOWTIMES
DISNEY VACATION CLUB DESK	DECK 4, MID	6:00 PM - 10:00 PM
FUNNEL VISION	DECK 9, MID	SHOWTIMES
FUTURE CRUISE SALES DESK	DECK 4, MID	10:00 AM - 12:00 PM
		5:00 PM - 6:00 PM
		7:30 PM - 10:00 PM
GUEST SERVICES	DECK 3, MID	24 HOURS
MEDICAL HEALTH CENTER	DECK 1, FWD	9:30 AM - 11:00 AM
		4:30 PM - 7:00 PM
PORT & SHOPPING DESK	DECK 3, MID	7:30 PM - 8:30 PM
PRELUDES	DECK 4, FWD	5:45 PM - 6:15 PM
		8:00 PM - 8:30 PM
QUARTER MASTERS (ARCADE)	DECK 9, MID	24 HOURS
SHUTTERS PHOTO GALLERY	DECK 4, AFT	10:00 AM - 10:00 PM
VISTA SPA AND SALON	DECK 9, FWD	8:00 AM - 10:00 PM
WALT DISNEY THEATRE	DECK 4, FWD	SHOWTIMES

SHOPPING

ART GALLERY	DECK 4, MID	1:00 PM - 4:00 PM
		7:00 PM - 9:00 PM
HAIR BRAIDING	DECK 4, MID	12:30 PM - 4:00 PM
MICKEY'S MATES	DECK 4, FWD	9:00 AM - 10:00 AM
RADAR TRAP (DUTY FREE)	DECK 3, FWD	4:00 PM - 10:00 PM
TREASURE KETCH	DECK 4, FWD	9:00 AM - 10:00 PM

IMPORTANT NUMBERS

Fire/Security: 7-3001
Medical EMERGENCY: 7-3000
Health Center: 7-1923

DINNER MENU

Animator's Palate: Panama Menu
Parrot Cay: Panama Menu
Triton's: Panama Menu

Dining Times: 5:45pm & 8:15pm

DRINK OF THE DAY

Panama Hat (Alcoholic)
Mango Pango (Non - Alcoholic)

WEATHER FORECAST

Sunday: Partly Cloudy
High: 87 F/30°C

DINING & LOUNGES

BREAKFAST

BEACH BLANKET BUFFET	DECK 9, AFT	5:30 AM - 10:00 AM
GOOFOY'S GALLEY	DECK 9, AFT	5:30 AM - 9:00 AM
TRITON'S (À-LA CARTE)	DECK 3, MID	7:30 AM - 9:30 AM

LUNCH

BEACH BLANKET BUFFET	DECK 9, AFT	12:00 PM - 2:00 PM
GOOFOY'S GALLEY	DECK 9, AFT	10:30 AM - 7:00 PM
PINOCCHIO'S PIZZERIA	DECK 9, MID	10:30 AM - 6:00 PM
PLUTO'S DOG HOUSE	DECK 9, AFT	10:30 AM - 6:00 PM
TRITON'S	DECK 3, MID	12:00 PM - 1:30 PM

DINNER

ANIMATOR'S PALATE	DECK 4, AFT	5:45 PM & 8:15 PM
PARROT CAY	DECK 3, AFT	5:45 PM & 8:15 PM
TRITON'S	DECK 3, MID	5:45 PM
PALO (18+)	DECK 10, AFT	6:00 PM - 9:00 PM
BEACH BLANKET (À-LA CARTE)	DECK 9, AFT	6:30 PM - 8:30 PM
PLUTO'S DOG HOUSE	DECK 9, AFT	6:00 PM - 9:30 PM

LATE NIGHT SNACKS

DIVERSIONS	DECK 3, FWD	11:00 PM - 12:00 MID
ICE CREAM AT GOOFOY'S GALLEY	DECK 9, AFT	7:00 PM - 11:00 PM
PINOCCHIO'S PIZZERIA	DECK 9, MID	9:30 PM - 12:00 MID
PROMENADE LOUNGE	DECK 3, AFT	11:00 PM - 12:00 MID

ADDED FEATURES

BEVERAGE STATION	DECK 9, AFT, PORT SIDE	24 HOURS
ROOM SERVICE	DIAL 6801 OR 6802	24 HOURS

ENTERTAINMENT - LOUNGES - BARS

Adults must be 21 and older to consume alcoholic beverages.

CADILLAC LOUNGE (18+)	DECK 3, FWD	5:30 PM - 12:00 MID
COVE CAFE (18+)	DECK 9, MID	5:30 AM - 12:00 MID
DIVERSIONS (18+ AFTER 9:00 PM)	DECK 3, FWD	4:30 PM - 12:00 MID
INTERNET CAFE	DECK 3, AFT	24 HOURS
OUTLOOK CAFE (18+)	DECK 10, MID	5:30 AM - 12:00 MID
PINOCCHIO'S PIZZERIA	DECK 9, MID	9:30 AM - 12:00 MID
PLUTO'S DOG HOUSE	DECK 9, AFT	10:30 AM - 6:00 PM
PRELUDES	DECK 4, FWD	5:45 PM - 6:15 PM
		8:00 PM - 8:30 PM
PROMENADE LOUNGE (FAMILY)	DECK 3, AFT	8:00 AM - 12:00 MID
SIGNALS (18+)	DECK 9, FWD	9:30 AM - 9:00 PM
STUDIO SEA	DECK 4, MID	SHOWTIMES
WAVEBANDS (18+)	DECK 3, FWD	9:45 PM - 2:00 AM

Consumers who order raw or partially cooked, ready-to-eat food of animal origin, are hereby informed that the food is not sufficiently cooked to ensure its safety.