

PERSONAL NAVIGATOR

SATURDAY, SEPTEMBER 21, 2013

Sunrise: 6:25 a.m. Sunset: 6:20 p.m.
Evening Attire: Semi Formal

Saturday: Partly Cloudy High: 87°F/29°C

DAY AT SEA

Disney Wonder Performers celebrate the music of ALAN MENKEN

WALT DISNEY THEATRE
DECK 4, FORWARD
6:15 P.M. & 8:30 P.M.

As a courtesy to all Guests, we kindly advise that the saving of seats is not permitted in the Walt Disney Theatre.



Assistance available at the entrance to the Walt Disney Theatre 30 minutes prior to show time.

Disney WONDER Officers



James Willoughby

Hotel Director

Joined Disney Cruise Line: 1999

Hometown: London, England

Favorite Character: Bagheera

After completing a Hotel Business Management Degree, James joined The Walt Disney Company in 1995 working at Epcot and Disney's Contemporary Resort in a variety of Food and Beverage roles. James' extensive background in the hospitality/resort industry led him to join the DCL opening team, working in various roles across the fleet, including time spent in Germany during the construction of the Disney Dream and Disney Fantasy.

Wonder Quest

FAMILY GAME SHOW

Enjoy the wildest and wackiest scavenger team event on the seven seas!

*Studio Sea,
Deck 4, Midship,
7:30 p.m.*

Don't Miss:

**Piloting a Ship Through the Panama Canal
Featuring Captain Ken Puckett**

Walt Disney Theatre, Deck 4, Forward - 9:30 a.m.

Based on his experience as a Panama Canal Pilot, Captain Puckett will explain the steps and procedures for safe transit through the Canal. He will also explain the duties and relationships of our Captain, Crew and the Panama Canal Pilot.

Wii Bowling Challenge: Jimmy vs. Captain Thord

Goofy's Deck Stage, Deck 9, Midship - 11:30 a.m.

Join your Cruise Director Jimmy, SELF-proclaimed Wii Bowling Champion of the Universe, as he challenges Captain Thord to a "friendly" game of Wii Bowling. Winner drives the ship through the Panama Canal!

Q&A Session with Grant Norman

Wavebands, Deck 3, Forward - 2:00 p.m.

You've seen him perform, now is your chance to ask your questions and to get an autograph from this Broadway star.

Art of The Theme Show Tour (18+)

Palo, Deck 10, Aft - 4:00 p.m.

Join us on a guided ship tour and discover the key ingredients that make the Disney Wonder.



Book your next cruise onboard and save 10% on prevailing rates as quoted on disneycruise.com. Plus, get an onboard credit and special deposit rate! Visit the Future Cruise Sales Desk for more information.

DINNER MENU

Animator's Palate: Savor from Around the World
Parrot Cay: Savor from Around the World
Triton's: Savor from Around the World

DRINK OF THE DAY

Island Navigator (Alcoholic)
Tropical Buzz (Non Alcoholic)

IMPORTANT NUMBERS

Fire/Security: 7-3001
Medical Emergency: 7-3000
Health Center: 7-1923

Cruise Highlights: Week 2

Saturday DAY AT SEA
Attire: Semi Formal

SHOWCASE: THE MUSIC OF ALAN MENKEN
Walt Disney Theatre
6:15 p.m. & 8:30 p.m.

Sunday PANAMA CANAL
Attire: Cruise Casual

MOVIE SPECIAL: PLANES 3D
Walt Disney Theatre
5:45 p.m. & 8:15 p.m.

Monday CARTAGENA
All Ashore: 9:30 am
All Aboard: 5:45 pm
Attire: Cruise Casual

SHOWTIME: CIRCO COMEDIA
Walt Disney Theatre
6:15 p.m. & 8:30 p.m.

Tuesday DAY AT SEA
Attire: Cruise Casual

SHOWTIME: DAVID WILLIAMSON
Walt Disney Theatre
6:15 p.m. & 8:30 p.m.

Wednesday DAY AT SEA
Attire: Formal

DISNEY DREAMS: AN ENCHANTED CLASSIC
Walt Disney Theatre
6:15 p.m. & 8:30 p.m.

Thursday COZUMEL
All Ashore: 7:30 am
All Aboard: 3:45 pm
Attire: Cruise Casual

CREW TALENT SHOW
Walt Disney Theatre
6:15 p.m. & 8:30 p.m.

Friday DAY AT SEA
Attire: Cruise Casual

REMEMBER THE MAGIC: A FINAL FAREWELL
Walt Disney Theatre
6:15 p.m. & 8:30 p.m.

Subject to change.



FEATURED VARIETY ACTS: WEEK 2



Comedy Duo: Circo Comedia

Jean Saucier and Patrick Côté both trained and performed with Cirque du Soleil. Jean Saucier was awarded the Bronze Medal at the Festival du Cirque de Demain in Paris, France for his bicycle routine together with his performing ensemble. Patrick Côté is a comic stuntman, an expert on roller skates and a formidable drummer. In their native country of Canada, Circo Comedia performed at all the major International Children's Festivals. Together, Jean and Patrick are taking the acrobatics, clowning and theatrics of Circo Comedia that audiences world-wide, have grown to know and love, to new "heights"!



The Comedy & Magic of David Williamson

David is an international award-winning magician. He is the first ever recipient of the prestigious International Brotherhood of Magicians Gold Cup Award of Excellence in close-up magic. David was voted Sleight of Hand Magician of the Year, two years in a row by his peers at Hollywood's renowned Magic Castle. He was also twice awarded the Magic Castle Lecturer of the Year and the Magic Castle Parlor Magician of the Year.



The Improvised Comedy of Improv Shmimprov

Improv Shmimprov is improvised comedy as you've never seen it before! Shmimprov's show is fast, funny, and hugely audience interactive asking audience members to participate by, for example, providing sound effects for a scene or move them like mannequins. NBC, CBS, The OC Register and audiences everywhere agree "Improv Shmimprov players show Los Angeles how it's done."



The Comedy & Ventriloquism of Michael Harrison

Michael Harrison is an extraordinarily talented ventriloquist, puppeteer and comedian. He has worked along side numerous acts from The Muppets to Boyz II Men. Michael wrote and starred in the award winning television show, "Kids in the Firehall," which was awarded the prestigious Bronze Apple Award. Recently, he took his talents to a new level when he appeared on "America's Got Talent." He finished as one of the finalist and received glowing reviews from the celebrity judges, David Hasselhoff, Sharon Osbourne and Piers Morgan.

FREE CARD JACKPOT BINGO

Wavebands, Deck 3, Forward

Card Sales - 10:30 a.m.

Game Starts - 10:45 a.m.

Four CASH prizes will be won, raffle prizes and a free bonus \$10 Jackpot card for everyone in attendance for game number four. Must play to win!

\$7,000 JACKPOT BINGO

Wavebands, Deck 3, Forward

Card Sales - 3:45 p.m.

Game Starts - 4:00 p.m.

Join your Cruise Staff as we play for four cash prizes! Plus the chance to win \$7,000 if you can cover your card in 46 numbers or less on the final game.

YOUTH ACTIVITIES HIGHLIGHTS

DINE & PLAY

A convenience for families dining at 8:15 p.m., our Youth Activities Counselors will be available at 9:15 p.m. at the entrance of Triton's, Parrot Cay and Animator's Palate dining rooms to bring registered children to join the fun in the Oceaneer Club and Oceaneer Lab.



Deck 5, Aft (7-18500) 9:00 a.m. - 11:00 p.m.

Infants and Toddlers can enjoy toys and activities at Flounder's Reef Nursery. Reservations are first come, first served so please stop by!



Deck 5, Midship (7-1440) (3 - 12 years old) 9:00 a.m. - 10:30 p.m.

LITTLE EINSTEIN'S ADVENTURE

9:15 a.m.

Your junior cruisers will have the time of their lives with this program inspired by their favorite show with fun activities guaranteed to make them feel like a little genius!

FLYING OFF TO NEVERLAND

4:15 p.m.

With our creative imaginations, we will fly to Neverland just like in one of our favorite Disney stories!



Deck 5, Midship (7-1445) (3 - 12 years old) 9:00 a.m. - 12:00 mid

ANIMATION ANTICS

10:30 a.m.

Learn simple animation techniques and then put your new skills to use by drawing some of your favorite Disney characters.

LAVA FLOW

10:00 p.m.

Build your own volcano and watch it erupt as you learn about the physics of volcanos.



Deck 2, Midship (7-5810) (11 - 14 years old)

10:00 a.m. - 1:00 a.m.

GENDER WARS

7:15 p.m.

It's the battle of girls vs. boys... Who will dominate to win the ultimate battle?



Deck 11, Midship (7-18517) (14 - 17 years old)

11:00 a.m. - 12:00 mid

KARAOKE

12:00 mid

Join us in Studio Sea tonight and sing along to your favorite songs, fun for everyone.

YOUTH ACTIVITIES OPEN HOUSE

Open House is an opportunity for all to come and participate in a variety of exciting activities and free time in the Oceaneer Club, Oceaneer Lab, Flounder's Reef Nursery, Vibe and Edge throughout the cruise. During these times secured programming will still be offered in the other venue for those looking to check their children into care.

Vibe: 11:00 a.m. - 12:30 p.m. Disney's Oceaneer Club: 9:00 a.m. - 11:30 a.m.

Vibe: 6:30 p.m. - 7:30 p.m.

Edge: 10:00 a.m. - 12:00 p.m.

Edge: 5:30 p.m. - 6:30 p.m.

BUENA VISTA THEATRE

Feature Movies this Week

SATURDAY - DAY AT SEA

8:30 a.m.	G	Aladdin	
11:00 a.m.	G	Monsters University	
2:00 p.m.	G	Movie Classic: To Kill A Mockingbird	
5:15 p.m.	G	Monsters University	
8:00 p.m.	G	Monsters University	
10:30 p.m.	PG-13	Phantom of the Opera	

SUNDAY - PANAMA CANAL

8:30 a.m.	G	Sleeping Beauty	
10:30 a.m.	PG	Brave	
12:30 p.m.	G	Finding Nemo	
2:30 p.m.	PG-13	Phantom of the Opera	
5:00 p.m.	PG-13	The Lone Ranger	
8:00 p.m.	PG-13	The Lone Ranger	
10:45 p.m.	G	Monsters University	

MONDAY - CARTAGENA

1:30 p.m.	PG-13	Pirates of the Caribbean: At World's End	
4:45 p.m.	PG-13	Pirates of the Caribbean: The Curse of the Black Pearl	
7:45 p.m.	PG-13	Pirates of the Caribbean: The Curse of the Black Pearl	
11:00 p.m.	PG-13	Pirates of the Caribbean: Dead Man's Chest	

TUESDAY - DAY AT SEA

8:30 a.m.	G	Cinderella	
2:00 p.m.	PG	Movie Classic: All the President's Men	
4:45 p.m.	PG-13	Les Miserables	
7:45 p.m.	PG-13	Les Miserables	
10:45 p.m.	PG	Oz The Great and Powerful	

WEDNESDAY - DAY AT SEA

8:30 a.m.	G	Pinocchio	
2:00 p.m.	PG	Movie Classic: The Bridge on the River Kwai	
5:00 p.m.	PG-13	Iron Man 3	
8:00 p.m.	PG-13	Iron Man 3	
10:30 p.m.	PG	Planes	

THURSDAY - COZUMEL

8:30 a.m.	G	The Jungle Book	
12:30 p.m.	PG	Planes	
2:30 p.m.	PG-13	The Avengers	
5:30 p.m.	PG	Planes	
8:00 p.m.	PG	Planes	
10:30 p.m.	PG-13	Les Miserables	

FRIDAY - DAY AT SEA

8:30 a.m.	G	Peter Pan	
10:00 a.m.	PG	Planes	
11:45 a.m.	G	Monsters University	
2:00 p.m.	G	Cool Hand Luke	
5:30 p.m.	PG	Planes	
8:00 p.m.	PG	Planes	
10:30 p.m.	PG-13	The Lone Ranger	

Subject to change.

MORE TO ENJOY WHILE ONBOARD



DISNEY VACATION CLUB® GROUP PREVIEW

Want to learn more about taking magical vacations year after year? Please see a Disney Vacation Club representative on Deck 4, Midship, or call 7-2805 from your stateroom phone for more information about our interactive group presentation.



BOOK NOW AND SAVE!

To find out more and how to save up to 10% off your next cruise, stop by the Future Cruise Sales Desk, Deck 4, Midship, or call 7-2848.



PORT SHOPPING GUIDE

For all of your Cartagena Port and Shopping Information, don't forget to visit the Port and Shopping Desk tonight between 7:30 p.m. - 8:30 p.m. on Deck 3, Midship.

CARE FREE TRAVEL OPTION

Visit Guest Services on Deck 3, Midship, to book shuttle service from our port back to George Bush Houston Intercontinental Airport. Cost is \$45.00 per person and may be booked up until 12:00 midday on the second from last day of the cruise.



VISTA SPA

Deck 9, Forward - Phone: 7-1465

PAMPER PACKAGE

50 mins full body massage include scalp and feet

25 mins booster facial

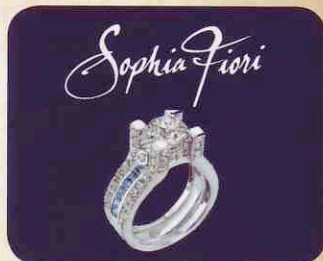
75 minutes pamper for only \$149

TODAY'S SHOPPING SPECIAL

Stop by Treasure Ketch to try on the world's most memorable white diamond pieces and commemorate your cruise. Ask the hosts about 50% savings off US retail.

TREASURE KETCH

Deck 4, Forward



CAMERA OF THE DAY!

The Panasonic ZS25 with 16.1 megapixels, 20x optical zoom and 3 inch LCD. Purchase this camera for only \$299.95 and receive a FREE 4GB SD card! Available in Shutters, Deck 4 Aft. We also carry a wide selection of binoculars. Hurry! Limited stock available.

WIRELESS INTERNET: KEEPING YOU CONNECTED AT SEA

\$0.75 per minute or save money by buying blocks of time. \$55 for 100 minutes, \$100 for 250 minutes and \$150 for 500 minutes. Wireless information sheets are available at Guest Services, Deck 3, Midship, Internet Cafe, Deck 3, Aft, Cove Cafe, Deck 9, Midship and Outlook Cafe, Deck 10, Midship.

Due to the technology involved and satellite connectivity, the onboard internet service will be noticeably slower than you may be accustomed to and might at times be interrupted or unavailable.

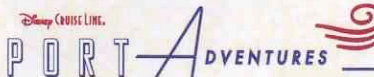
STAMPS

Panamanian stamps and postcards are available at the Guest Services Desk. If you wish to post your letter or postcards, please bring your mail to the Guest Services Desk no later than 2:00 p.m. on Panama Canal day.

PASSPORTS

If you would like your passport stamped by the Panamanian Immigration authorities, please bring your Passport between 9:30 a.m. and 2:00 p.m. to the Port Adventures Desk, Deck 3 Midship, on Panama Canal day.

Disney Cruise Line



Space is filling up, be sure not to miss out on your favorite port adventure.

Tour the city, break away to a beach resort or swim with dolphins to make your cruise unforgettable. The adventure is out there, let us help you. Our friendly staff is waiting to answer your questions at the Port Adventures Desk, Deck 3 Midship.

SHOPPING

H2O BATH COLLECTION

Treat yourself to the ultimate indulgence with H2O products. H2O offers shampoo, conditioner, lip balm, hydrating body lotion and after sun care. Available in Treasure Ketch.

GUCCI AND JUICY COUTURE SUNGLASSES

Treasure Ketch is offering 25% off all Gucci and Juicy Couture sunglasses!

BRITTO FIGURINES

Gifts from Romero Britto are always a welcome surprise! All figurines feature the trade mark bright colors and unique assortment of contrasting designs you have come to expect from pop artist Romero Britto. Figurines of your favorite Disney Characters available in Treasure Ketch today.

DUTY FREE FRAGRANCE

Find top designer fragrances in Treasure Ketch, all available at Duty Free pricing. Choose from varieties such as Chanel, Ralph Lauren, Issey Miyake and many more.

SOPHIA FIORI DIAMOND TRUNK SHOW

Sophia Fiori is an LA based designer, wholesaler, and one of Hollywood's favorite designers. Industry leaders in colored diamonds, and more specifically Caribbean blue diamonds - one of the single most popular purchases at sea because it reminds everyone of the colors of the Breathtaking Ocean! Treasure Ketch, Deck 4, Forward.

EVERYTHING PRINCESS AT MICKEY'S MATES

Are you cruising with a young, aspiring Princess? Stop by Mickey's Mates for all things Disney Princess including dresses and accessories. Whether your princess is inspired by Cinderella, Belle, Merida, or Princess Tiana, Mickey's Mates has everything you need to be royal ready! Deck 4, Midship.

DW1326 09-21-2013 ©DISNEY

IMPORTANT INFORMATION

Security Notice

All Guests (including Children) who wish to disembark or embark the ship are required to present their Key to the World card at the gangway. A photo ID is also required for those Guests who are 18 years of age or older. Guests under the age of 18 are required to have a Parent, Guardian or other responsible adult sign an authorization form at the time it is given out if they wish to go ashore unaccompanied. Authorization forms are available at the gangways and Guest Services.

Cold and Flu Reminder

Please wash hands frequently and thoroughly, particularly before meals. Contact the Health Center by dialing 7-1923, should anyone in your party become ill.

Inclement Weather

For the safety of all Guests, outdoor events may be changed due to unforeseen weather conditions.

Corridor Quiet Hours

As a courtesy to all our Guests, please recognize quiet hallway hours from 10:00 p.m. til 8:00 a.m.

Environmental Message

With Disney's commitment to the Environment please refrain from throwing anything over the Ship's side. Thank you.

No Reserved Seats Policy

As a courtesy to all Guests we kindly advise that the saving of seats is not permitted in the Walt Disney Theatre, and the saving of the sun loungers is not permitted on Deck 9 and 10. Items left unattended will be returned to lost and found at Guest Services, Deck 3, Midship.

Smoking

For the comfort of our Guests the following open deck areas are designated as Smoking areas: Deck 4, Starboard side from 6:00 p.m. to 6:00 a.m. ONLY, Deck 9 Forward Starboard side at Quiet Cove and Deck 10 Starboard side. Smoking is prohibited in all Guest staterooms. Guests found smoking in their staterooms will be charged a \$250 stateroom recovery fee. Electronic cigarettes may only be used in designated smoking areas.

Sunscreen Advisory

Don't forget to apply sunscreen and insect repellent when going ashore.

Walt Disney Theatre

Theatrical performances may use artificial fog, strobe lights, pyrotechnics and other special effects. For the safety of our performers and the comfort of those around you, the use of any photography or video recording device or any electronic equipment is prohibited.

Verandah Safety

Please do not leave any combustible materials on your balcony when not present in your stateroom for safety reasons.

Morning	8:30	8:45	9:00	9:15	9:30	9:45	10:00	10:15	10:30	10:45	11:00	11:15	11:30	11:45	12:00	12:15	12:30	12:45	1:00	1:15	1:30	
FUNNEL VISION			Virtual Tours Funnel Vision				Lady and the Tramp Funnel Vision						Wii Bowling Funnel Vision				DJ Kevin Poolside Goofy's Pool					
BUENA VISTA THEATRE	Aladdin (G) Duration: 1 Hour 30 Minutes						Monsters University (G) Duration: 1 Hour 43 Minutes															
CHARACTER	For detailed character appearances, call 7-PALS or refer to the Character Screen in the Lobby Atrium.																Mickey & Minnie Dk 9, Gazebo		Donald, Daisy Dk 9, Gazebo		Chip & Dale Dk 9, Gazebo	
FUN FOR ALL AGES	Jimmy's Morning Show Studio Sea				Captain Ken Puckett: Piloting a Ship Through the Panama Canal Walt Disney Theatre				Bingo Pre Sales		Free Card Jackpot Wavebands		Wii Bowling Challenge: Jimmy vs. Captain Thord Goofy's Pool Deck		Photography Seminar Diversions				Salsa Dance Basics with Chris and Natalie Wavebands			
	Toddler Time <8:00 Flounder's Reef Nursery		Family Crafts: Door Hangers Promenade Lounge		Soccer Kicks Wide World Of Sports Deck				Cruisin' For Trivia Promenade Lounge				Who Am I? Promenade Lounge		Broadway Music Trivia Promenade Lounge		Animation - Pluto Animator's Palate					
ADULTS	Friends of Bill W. Outlook Cafe				Adult Crafts: Photo Frames Animator's Palate				Disney's Art of Entertaining: Halibut Studio Sea				Dining Team Origami Studio Sea				Disney Vacation Club Group Preview Studio Sea					
	Walk A Mile Preludes						Ionithermie: Cellulite Solutions Vista Spa Fitness Centre				How to Increase Your Metabolism Outlook Cafe				Animation - Pluto Animator's Palate				Sports Trivia Diversions			
VIBE 14-17 YEARS OLD											Youth Activities Open House						Gotcha Check-In		Ice Cream Social			
EDGE 11-14 YEARS OLD							Youth Activities Open House												Sports Deck Fun			
OCEANEER LAB 3-12 YEARS OLD							Animation Antics						Lunch		Captain Puckett							
OCEANEER CLUB 3-12 YEARS OLD	Youth Activities Open House												Lunch		Where is Tink?							
			Little Einstein's Adventure				Games & More						Lunch									

Afternoon	1:45	2:00	2:15	2:30	2:45	3:00	3:15	3:30	3:45	4:00	4:15	4:30	4:45	5:00	5:15	5:30	5:45	6:00	6:15	6:30	6:45			
FUNNEL VISION		Disney Channel on Deck Funnel Vision					Toy Story 3 (G) Funnel Vision					Virtual Tours Funnel Vision					Mulan (G) Funnel Vision							
BUENA VISTA THEATRE	Movie Classic: To Kill A Mockingbird (G) Duration: 2 Hours 9 Minutes														Monsters University (G) Duration: 1 Hour 43 Minutes									
CHARACTER		Goofy & Pluto Dk 9, Gazebo		Stitch Dk 9, Gazebo												Minnie Lobby Atrium		Mickey Lobby Atrium						
	For detailed character appearances, call 7-PALS or refer to the Character Screen in the Lobby Atrium.														Daisy Dk 4, Mid		Donald Dk 4, Mid							
FUN FOR ALL AGES		Q&A Session with Grant Norman Wavebands				Nautical Knot Tying Studio Sea			Bingo Pre Sales		\$7,000 Jackpot Wavebands			Walk A Mile Preludes					Wonder Performers celebrate the music of Alan Menken Walt Disney Theatre					
		Disney Channel on Deck Deck Stage		Family Crafts: Animal Masks Animator's Palate			Disney Trivia Promenade Lounge		Basketball Free Throw Wide World of Sports Deck				Family Time with Sonic Groove Promenade Lounge											
ADULTS		The Masters: Golf Chipping Lobby Atrium			90's Music Trivia Diversions						Mojito Tasting (21+) Cadillac Lounge													
		Rum Tasting (21+) Cadillac Lounge									Art of The Theme Show Tour Palo		Tour De Cycle Vista Spa Fitness Center											
VIBE 14-17 YEARS OLD	Ice Cream Social				Scavenger Hunt												Sports Deck Fun				Open House			
EDGE 11-14 YEARS OLD	Sports Deck Fun								Homework Help				Youth Activities Open House											
OCEANEER LAB 3-12 YEARS OLD	Captain Puckett						Marshmallow Olympics				Bingo				Dinner				Eggsperiments					
OCEANEER CLUB 3-12 YEARS OLD	Where is Tink?						Mouseketeer Training				Flying Off to Neverland				Dinner				Heffalump Hunting					

Evening	7:00	7:15	7:30	7:45	8:00	8:15	8:30	8:45	9:00	9:15	9:30	9:45	10:00	10:15	10:30	10:45	11:00	11:15	11:30	11:45	12:00	
FUNNEL VISION	Mulan 6:00 p.m. Funnel Vision											Live Music with Time Machine Goofy's Pool										
BUENA VISTA THEATRE					Monsters University (G) Duration: 1 Hour 43 Minutes							Phantom of the Opera (PG-13) Duration: 2 Hours 13 Minutes										
CHARACTER		Goofy Lobby Atrium		Mickey & Pluto Lobby Atrium								Donald, Daisy Lobby Atrium		Mickey & Friends Lobby Atrium								
		Chip & Dale Dk 4, Mid		Donald, Daisy Dk 4, Mid								Chip & Dale Dk 4, Mid		Goofy Dk 4, Mid								
FUN FOR ALL AGES		Pin Trading Station Preludes	Wonder Quest Studio Sea										Game Show: The Wheel Studio Sea		Club Studio Sea Studio Sea							
	DJ Dance Party Wavebands																					
	Family Dance with Sonic Groove Promenade Lounge				Live Music with Time Machine Goofy's Pool																	
ADULTS			Music and Martinis with Gayla Smith Cadillac Lounge						Road Dogs with Gayla Smith Cadillac Lounge			Krazy Karaoke followed by DJ Kevin Wavebands										
									Under the Stars with Sonic Groove Quiet Cove			Under the Stars with Sonic Groove Quiet Cove			Late Night Piano Cadillac Lounge							
VIBE 14-17 YEARS OLD	Open House		Gender Wars								Pump It Up			Movie Time								
EDGE 11-14 YEARS OLD			Gender Wars								Just Dance with the Officers					Sports Deck Fun						
OCEANEER LAB 3-12 YEARS OLD	Eggperiments				Game Challenge				Disney Scene It					Lava Flow								
OCEANEER CLUB 3-12 YEARS OLD	Heffalump Hunting		Dance Party									Sebastian's Junkanoo Jam										

Symbol for activities that will be repeated during the cruise



FOLD

Fold along the dotted lines and take me with you so you don't miss any of the fun!

FOLD

IN THE SPOTLIGHT SERIES



SOLVE IT! SERIES



JUMP UP! SERIES



CREATE & INVENT SERIES



OPEN HOUSE



CLUBHOUSE SERIES



STORYBOOK SERIES

SATURDAY, SEPTEMBER 21, 2013 - DAY AT SEA

BUENA VISTA THEATRE

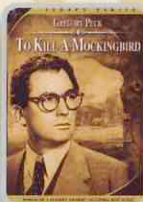
DOLBY 3D



8:30 a.m.
Duration:
1 hr 30 mins
Rating: G



11:00 a.m., 5:15 p.m.
& 8:00 p.m.
Duration:
1 hr 43 mins
Rating: G



2:00 p.m.
Duration:
2 hrs 9 mins
Rating: G



10:30 p.m.
Duration:
2 hrs 13 mins
Rating: R

Character Appearances

MICKEY & MINNIE

Deck 9, Gazebo - 12:30 p.m.

MINNIE MOUSE

Lobby Atrium - 5:15 p.m.

DONALD & DAISY

Deck 9, Gazebo - 1:00 p.m.
Deck 4, Midship - 7:45 p.m.
Lobby Atrium - 9:30 p.m.

DONALD DUCK

Deck 4, Midship - 5:45 p.m.

MICKEY MOUSE

Lobby Atrium - 5:45 p.m.

CHIP & DALE

Deck 9, Gazebo - 1:30 p.m.
Deck 4, Midship
7:15 p.m. & 9:30 p.m.

MICKEY & PLUTO

Lobby Atrium - 7:45 p.m.

GOOFLY & PLUTO

Deck 9, Gazebo - 2:00 p.m.

MICKEY, MINNIE & PLUTO

Lobby Atrium - 10:00 p.m.

GOOFLY

Lobby Atrium - 7:15 p.m.
Deck 4, Midship - 10:00 p.m.

STITCH

Deck 9, Gazebo - 2:30 p.m.

DAISY DUCK

Deck 4, Midship - 5:15 p.m.



Don't forget your Camera to capture those Magical Moments!

Check here each day for Character appearances.

For detailed Character appearance information, please dial 7-PALS or see the Character Information Board in the Lobby Atrium.

Meet-and-Greets will be advertised for the length of time the line will be open. To avoid disappointment, please meet at start time of appearances.

YOUTH ACTIVITIES THEMED EXPERIENCES

CLUBHOUSE SERIES
focuses on movement and features content which appeals to younger children.

STORYBOOK SERIES
is designed with a strong connection to the Disney classic stories.

JUMP UP! SERIES
includes large group games & movement-oriented activities.

CREATE & INVENT SERIES
will have a tactile focus allowing children to create and admire their work.

IN THE SPOTLIGHT SERIES
focuses on children's stage presence with lots of activities and enthusiasm.

SOLVE IT! SERIES
are less active, but will challenge children with problem/solutions-based activities.

YOUTH ACTIVITIES OPEN HOUSE

Activities for families, adults and children of all ages to enjoy together.

SHIP DIRECTORY

YOUTH ACTIVITIES

DISNEY'S OCEANEER CLUB	DECK 5, MID	9:00 AM - 10:30 PM
DISNEY'S OCEANEER LAB	DECK 5, MID	9:00 AM - 12:00 MID
EDGE	DECK 2, MID	10:00 AM - 1:00 AM
VIBE	DECK 11, MID	11:00 AM - 12:00 MID
FLOUNDER'S REEF NURSERY	DECK 5, AFT	9:00 AM - 11:00 PM

RECREATION

GOOFLY'S POOL	DECK 9, MID	6:00 AM - 12:00 MID
MICKEY'S POOL	DECK 9, AFT	8:00 AM - 10:00 PM
MICKEY'S SLIDE	DECK 9, AFT	9:00 AM - 5:30 PM
MICKEY'S SPLASH ZONE	DECK 9, AFT	8:00 AM - 8:00 PM
PORT ADVENTURES DESK	DECK 3, MID	10:00 AM - 1:00 PM 2:00 PM - 5:00 PM
QUIET COVE POOL	DECK 9, FWD	6:00 AM - 12:00 MID
VISTA FITNESS CENTER	DECK 9, FWD	6:00 AM - 10:00 PM
WIDE WORLD OF SPORTS DECK	DECK 10, FWD	24 HOURS

GENERAL INFORMATION

BUENA VISTA THEATRE	DECK 5, AFT	SHOWTIMES
DISNEY VACATION CLUB DESK	DECK 4, MID	9:00 AM - 12:00 PM 2:30 PM - 10:00 PM
FUNNEL VISION	DECK 9, MID	SHOWTIMES
FUTURE CRUISE SALES DESK	DECK 4, MID	9:00 AM - 12:00 PM 3:30 PM - 6:00 PM 7:30 PM - 8:30 PM
GUEST SERVICES	DECK 3, MID	24 HOURS
MEDICAL HEALTH CENTER	DECK 1, FWD	9:30 AM - 11:00 AM 4:30 PM - 7:00 PM
PORT & SHOPPING DESK	DECK 3, MID	7:30 PM - 8:30 PM
PRELUDES	DECK 4, FWD	5:45 PM - 6:15 PM 8:00 PM - 8:30 PM
QUARTER MASTERS (ARCADE)	DECK 9, MID	24 HOURS
SHUTTERS PHOTO GALLERY	DECK 4, AFT	10:00 AM - 10:00 PM
VISTA SPA AND SALON	DECK 9, FWD	8:00 AM - 10:00 PM
WALT DISNEY THEATRE	DECK 4, FWD	SHOWTIMES

SHOPPING

ART GALLERY	DECK 4, MID	1:00 PM - 4:00 PM 7:00 PM - 9:00 PM
HAIR BRAIDING	DECK 9, MID	12:00 PM - 4:30 PM
MICKEY'S MATES	DECK 4, FWD	9:00 AM - 10:00 PM
RADAR TRAP (DUTY FREE)	DECK 3, FWD	4:00 PM - 10:00 PM
TREASURE KETCH	DECK 4, FWD	9:00 AM - 10:00 PM

IMPORTANT NUMBERS

Fire/Security: 7-3001
Medical EMERGENCY: 7-3000
Health Center: 7-1923

DINNER MENU	Animator's Palate: Savor from Around the World	DRINK OF THE DAY	Island Navigator (Alcoholic)	WEATHER FORECAST	Saturday: Partly Cloudy
	Parrot Cay: Savor from Around the World		Tropical Buzz (Non - Alcoholic)		High: 87°F/29°C
	Triton's Savor from Around the World		Dining Times: 5:45pm & 8:15pm		Evening Attire: Semi Formal

DINING & LOUNGES

BREAKFAST

BEACH BLANKET BUFFET	DECK 9, AFT	7:30 AM - 10:45 AM
GOOFLY'S GALLEY	DECK 9, AFT	7:00 AM - 9:00 AM
TRITON'S (A-LA CARTE)	DECK 3, MID	8:00 AM - 9:30 AM

LUNCH

BEACH BLANKET BUFFET	DECK 9, AFT	12:00 PM - 2:00 PM
GOOFLY'S GALLEY	DECK 9, AFT	10:30 AM - 7:00 PM
PARROT CAY	DECK 3, AFT	12:15 PM - 1:30 PM
PINOCCHIO'S PIZZERIA	DECK 9, MID	10:30 AM - 6:00 PM
PLUTO'S DOG HOUSE	DECK 9, AFT	10:30 AM - 6:00 PM
TRITON'S	DECK 3, MID	12:00 PM - 1:30 PM

DINNER

ANIMATOR'S PALATE	DECK 4, AFT	5:45 PM & 8:15 PM
PARROT CAY	DECK 3, AFT	5:45 PM
TRITON'S	DECK 3, MID	5:45 PM & 8:15 PM
PALO (18+)	DECK 10, AFT	6:00 PM - 9:00 PM
BEACH BLANKET (A-LA CARTE)	DECK 9, AFT	6:30 PM - 8:30 PM
PLUTO'S DOG HOUSE	DECK 9, AFT	6:00 PM - 9:30 PM

LATE NIGHT SNACKS

DIVERSIONS	DECK 3, FWD	11:00 PM - 12:00 MID
ICE CREAM AT GOOFLY'S GALLEY	DECK 9, AFT	7:00 PM - 12:00 MID
PINOCCHIO'S PIZZERIA	DECK 9, MID	9:30 PM - 12:00 MID
PROMENADE LOUNGE	DECK 3, AFT	11:00 PM - 12:00 MID

ADDED FEATURES

BEVERAGE STATION	DECK 9, AFT, PORT SIDE	24 HOURS
ROOM SERVICE	DIAL 6801 OR 6802	24 HOURS

ENTERTAINMENT - LOUNGES - BARS

Adults must be 21 and older to consume alcoholic beverages.

CADILLAC LOUNGE (18+)	DECK 3, FWD	5:30 PM - 12:00 MID
COVE CAFE (18+)	DECK 9, MID	6:30 AM - 12:00 MID
DIVERSIONS (18+ AFTER 9:00 PM)	DECK 3, FWD	11:00 AM - 12:00 MID
INTERNET CAFE	DECK 3, AFT	24 HOURS
OUTLOOK CAFE (18+)	DECK 10, MID	7:00 AM - 12:00 MID
PINOCCHIO'S PIZZERIA	DECK 9, MID	9:30 AM - 11:00 PM
PLUTO'S DOG HOUSE	DECK 9, AFT	10:30 AM - 6:00 PM
PRELUDES	DECK 4, FWD	5:45 PM - 6:15 PM 8:00 PM - 8:30 PM
PROMENADE LOUNGE (FAMILY)	DECK 3, AFT	8:00 AM - 12:00 MID
SIGNALS (18+)	DECK 9, FWD	9:30 AM - 9:00 PM
STUDIO SEA	DECK 4, MID	SHOWTIMES
WAVEBANDS (18+)	DECK 3, FWD	9:45 PM - 2:00 AM

Consumers who order raw or partially cooked, ready-to-eat food of animal origin, are hereby informed that the food is not sufficiently cooked to ensure its safety.