

PERSONAL NAVIGATOR

FRIDAY, SEPTEMBER 27, 2013

Sunrise: 6:45 a.m. Sunset: 6:57 p.m.
Evening Attire: Cruise Casual

Friday: Partly Cloudy High: 83°F/29°C

DAY AT SEA



Featuring

The Comedy and Ventriloquism
of
Michael Harrison



and the
Disney Wonder Performers

WALT DISNEY THEATRE

Deck 4, Forward

6:15 p.m. & 8:30 p.m.



As a courtesy to all Guests, we kindly advise that the saving of seats is not permitted in the Walt Disney Theatre.



Assistance available at the entrance to the Walt Disney Theatre 30 minutes prior to show time.

Disney WONDER Fun Facts

Distance Sailed This Voyage

Los Angeles to Cabo San Lucas
815 nautical miles

Cabo San Lucas to Puerto Vallarta
296 nautical miles

Puerto Vallarta to Panama Canal
1853 nautical miles

Panama Canal to Cartagena
276 nautical miles

Cartagena to Cozumel
930 nautical miles

Cozumel to Galveston
717 nautical miles

Total Nautical Miles
4887 nautical miles



FAMILY VARIETY

Featuring the
Comedy & Ventriloquism
of Michael Harrison, as he
entertains you in this fun
filled family show.

Walt Disney Theatre,
Deck 4, Forward,
2:00 p.m.

Don't Miss:

Captain Puckett: WWII Plans to Destroy the Panama Canal

Walt Disney Theatre, Deck 4, Forward - 9:30 a.m.

During WWII the Panama Canal was strategically important to the U.S. and its Allies. Captain Puckett will share little known secrets about the development of a Secret Weapon that was specifically designed to attack and destroy the Panama Canal.

Disney's Art of Entertaining: Cruise Director vs. Captain

Studio Sea, Deck 4, Midship - 10:30 a.m.

You've learned from the pros and now it's time for the main event! Captain Thord "Tortellini" takes on Cruise Director Jimmy "Jambalaya" in this winner-takes-all event. Let's get ready to rumble.

Autograph Session with Captain Puckett

Preludes, Deck 4, Forward - 11:30 a.m. & 1:45 p.m.

This is your chance to meet our special guest presenter, Captain Puckett, and get his autograph.

Pub Night (18+)

Wavebands, Deck 3, Forward - 10:45 p.m.

Say "cheers" to new friends in a fun-filled farewell, featuring performances by your Cruise Staff and a hilarious cruise ship skit. A great way to toast the end of your cruise!



Turn your magical vacation memories into an impressive keepsake with a personalized, one-of-a-kind PhotoBook. Fill every page with wonderful memories of your family during this cruise. Visit Shutters today, as supplies are limited and orders will close at 7:00pm on the last day of the cruise.

**Offer valid per stateroom only. Terms and conditions apply.
The PhotoBook is only available for purchase during this cruise.*

DINNER MENU

Animator's Palate: 'Til We Meet Again
Parrot Cay: 'Til We Meet Again
Triton's: 'Til We Meet Again

DRINK OF THE DAY

High Tide (Alcoholic)
Lava Smoothie (Non Alcoholic)

IMPORTANT NUMBERS

Fire/Security: 7-3001
Medical Emergency: 7-3000
Health Center: 7-1923

FUN FOR ALL AGES HIGHLIGHTS

~~Ashley's~~ JIMMY'S MORNING SHOW

Studio Sea, Deck 4, Midship - 8:30 a.m.

Let's face it, we knew it all along! It has always been Ashley's show, and now we got it right! Join us for Ashley's Morning Show... and, oh yeah, that Jimmy guy will be there too.



JACK-JACK'S INCREDIBLE DIAPER DASH

Lobby Atrium, Deck 3, Midship - 9:00 a.m.

Calling all baby cruisers! The Disney Wonder's babies take to the mat to see who's the fastest crawler of the seven seas! Register your baby from 8:45 a.m. - 9:00 a.m.

GAME SHOW: THE WHEEL

Promenade Lounge, Deck 3, Aft - 9:30 a.m.

A special version of this popular TV game show.

CAPTAINS SIGNING

Treasure Ketch, Deck 4, Forward - 12:15 p.m.

Meet the Master of the Disney Wonder and have your cruise memories signed.

MICKEY 200

Wavebands, Deck 3, Forward - 12:15 p.m.

Don't eat your vegetables... race them in this wild and wacky charge to the finish line. May the best veggie win! (Limited Availability)

JEWISH SABBATH

Cadillac Lounge, Deck 3, Forward - 5:00 p.m.

A quiet space is reserved for those wishing to conduct their own service.

FRIENDSHIP ROCKS

Walt Disney Theatre, Deck 4, Forward - 5:00 p.m.

Come and celebrate with all the children from the Oceaneer Club and Oceaneer Lab in the Jammin' performance of Friendship Rocks! You won't want to miss any of the fun.

WHO WANTS TO BE A MOUSEKETEER?

Studio Sea, Deck 4, Midship - 7:30 p.m.

Your chance to get in to the "hot seat" and win limited edition prizes. Or, play along as part of our live studio audience.

FAREWELL KARAOKE

Studio Sea, Deck 4, Midship - 10:30 p.m.

Bring along the entire family for one more round of karaoke. This is your last opportunity to grab the mic and sing along to your favorite song.



ADULT ACTIVITY HIGHLIGHTS

VISTA SPA FITNESS CLASSES & SEMINARS

Sunrise Stretch - Vista Spa Fitness Center - 7:00 a.m.

Body Sculpt Boot Camp - Vista Spa Fitness Center - 7:30 a.m.

AB Attack - Vista Spa Fitness Center - 8:30 a.m.

Complimentary Footprint Analysis - Outlook Cafe - 10:00 a.m.

Seminar: Pain, Digestion & Chinese Herbs - Outlook Cafe - 11:15 a.m.

Yoga - Vista Spa & Salon - 5:00 p.m.



TASTING CLASSES

Champagne & Sparkling Wine Tasting (21+) - Cadillac Lounge - 12:00 p.m.

Mojito (21+) - Cadillac Lounge - 2:00 p.m.

Martini Tasting (21+) - Cadillac Lounge - 4:00 p.m.

Please make reservations for tastings at Guest Services for a nominal fee.

Tasting Seminars are only for Guests 21 and Older.

THE MASTERS: GOLF PUTTING

Lobby Atrium, Deck 3, Midship - 2:00 p.m.

Test your golf putting skills amongst fellow Guests.

DISNEY'S INNOVATIONS: THEME PARKS

Diversions, Deck 3, Forward - 3:30 p.m.

Join us for our presentation showing the "Top 10" greatest innovations that the Walt Disney Company has introduced to theme parks.

KNOW IT ALL TRIVIA

Diversions, Deck 3, Forward - 4:30 p.m.

Join your Club Host if you think you've got what it takes!

PUB NIGHT

Wavebands, Deck 3, Forward - 10:45 p.m.

Say "cheers" to new friends in a fun-filled farewell, featuring performances by your Cruise Staff and a hilarious cruise ship skit. A great way to toast the end of your cruise!

BIG MONEY JACKPOT BINGO

Wavebands, Deck 3, Forward

Card Sales - 10:30 a.m.

Game Starts - 10:45 a.m.

Four CASH prizes to be won! The snowball jackpot continues to grow and could go at this morning's session.

FINAL MEGA JACKPOT BINGO

Walt Disney Theatre, Deck 4, Forward

Card Sales - 3:00 p.m.

Game Starts - 3:30 p.m.

The snowball jackpot **MUST BE WON** at this final session! Beat the line and get your cards early. An estimated \$10,000 in prize money to be won. Who will be the lucky winner? It could be you!

YOUTH ACTIVITIES HIGHLIGHTS

DINE & PLAY

A convenience for families dining at 8:15 p.m., our Youth Activities Counselors will be available at 9:15 p.m. at the entrance of Triton's, Parrot Cay and Animator's Palate dining rooms to bring registered children to join the fun in the Oceaneer Club and Oceaneer Lab.



Deck 5, Aft (7-18500) 9:00 a.m. - 11:00 p.m.

Infants and Toddlers can enjoy toys and activities at Flounder's Reef Nursery. Reservations are first come, first served so please stop by!



Deck 5, Midship (7-1440) 9:00 a.m. - 12:00 mid
(3 - 12 years old)

DO SI DO WITH SNOW WHITE

9:30 a.m.

It's nonstop fun as your children learn the "Dance of the Seven Dwarfs" and then perform with a special guest.

FRIENDSHIP ROCKS

5:00 p.m.

Come and celebrate with all the children from the Oceaneer Club and Lab in the jammin' performance of Friendship Rocks! You won't want to miss any of the fun.



Deck 5, Midship (7-1445) 9:00 a.m. - 12:00 mid
(3 - 12 years old)

AROUND THE WORLD IN 7 DAYS

9:15 a.m.

As budding Disney Imagineers you will be set the task of replicating world landmarks with a Disney twist.

LIGHTS, CAMERA, IMPROV!

11:00 a.m.

Perform an improv skit as you discover the wonders of drama and music on stage in front of a live audience.



Deck 2, Midship (7-5810) 10:00 a.m. - 12:00 mid
(11 - 14 years old)

SHIP FACTOR

1:45 p.m.

Ready for one of the toughest challenge competitions onboard?

BOYS AND GIRLS CHILL

9:30 p.m.

Boys you will hang in the Oceaneer Club for competition, challenges, and fun. Girls you will hang in the Oceaneer Lab to chill with music, games, and fun.



Deck 11, Midship (7-18517) 11:00 a.m. - 1:00 a.m.
(14 - 17 years old)

PICTURE THIS

3:30 p.m.

Create your own professional picture frame and take a photo with a special guest.

FAREWELL PARTY

11:30 p.m.

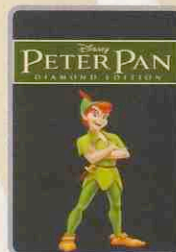
Join your fellow teen cruisers for this fun-filled dance party.

BUENA VISTA THEATRE

Today's Movies

DOLBY 3D

DOLBY 3D



8:30 a.m.
Duration:
1 hr 16 mins
Rating: G



10:00 a.m., 5:30 p.m.
& 8:00 p.m.
Duration:
1 hr 32 mins
Rating: PG



11:45 a.m.
Duration:
1 hr 43 mins
Rating: G



2:00 p.m.
Duration: 2 hrs 6 mins
Rating:



10:30 p.m.
Duration: 2 hrs 29 mins
Rating: PG-13



TALENT SHOW

Your fellow Guests have rehearsed and are ready to show off their talents. Rehearsal time for those already registered for our show will take place at 4:45 p.m. in WaveBands.

**Wavebands,
Deck 3, Forward,
7:30 p.m.**



'TIL WE MEET AGAIN

The world-famous Disney Characters and some of your new friends from the Disney Wonder stage shows bid you a charming farewell.

**Lobby Atrium,
Deck 3, Midship,
10:00 p.m.**

YOUTH ACTIVITIES OPEN HOUSE

Open House is an opportunity for all to come and participate in a variety of exciting activities and free time in the Oceaneer Club, Oceaneer Lab, Flounder's Reef Nursery, Vibe and Edge throughout the cruise. During these times secured programming will still be offered in the other venue for those looking to check their children into care.

Vibe: 11:00 a.m. - 12:30 p.m. Disney's Oceaneer Club: 9:00 a.m. - 10:30 a.m.
Edge: 10:30 a.m. - 12:00 p.m.

MORE TO ENJOY WHILE ONBOARD

DISNEY VACATION CLUB® GROUP PREVIEW

Want to learn more about taking magical vacations year after year? Please see a Disney Vacation Club representative on Deck 4, Midship, or call 7-2805 from your stateroom phone for more information about our interactive group presentation.

VISIT THE FUTURE CRUISE SALES DESK EARLY TODAY

Avoid the evening rush and visit the Future Cruise Sales Desk early for your last chance to save 10% on your next cruise, receive up to a \$200 onboard credit, and pay a reduced deposit. Future Cruise Sales Desk, Deck 4, Midship.

EXPRESS CHECK OUT

If you have a credit card on file, you qualify for express check out. No need to visit Guest Services to settle your account.

EXPRESS WALK OFF

Carry all your luggage and be the first to get off the ship once the ship has been cleared in Galveston.

WIRELESS INTERNET: KEEPING YOU CONNECTED AT SEA

\$0.75 per minute or save money by buying blocks of time. \$55 for 100 minutes, \$100 for 250 minutes and \$150 for 500 minutes. Wireless information sheets are available at Guest Services, Deck 3, Midship, Internet Cafe, Deck 3, Aft, Cove Cafe, Deck 9, Midship and Outlook Cafe, Deck 10, Midship. Due to the technology involved and satellite connectivity, the onboard internet service will be noticeably slower than you may be accustomed to and might at times be interrupted or unavailable.

EARLY FLIGHT DEPARTURES

Guests with flights departing prior to 12:00 p.m. are kindly asked to notify Guest Services located on Deck 3, Midship, no later than 12:00 noon today.

CARE FREE TRAVEL OPTION

Visit Guest Services on Deck 3, Midship, to book shuttle service from our port back to George Bush Houston Intercontinental Airport. Cost is \$45.00 per person and may be booked up until 12:00 midday on the second from last day of the cruise. There will be one shuttle departure to William P. Hobby Airport. Departure from the bus depot will be at 9 a.m., so guests must disembark the ship no later than 8:15 a.m. The cost of the transfer will be \$45 per person.



VISTA SPA

Deck 9, Forward - Phone: 7-1465

LAST DAY TREAT

20 minute back stone massage
20 minute booster facial
20 minute scalp, foot and ankle massage

Today Only: for only \$119

SHOPPING

ART GALLERY - SILENT ART AUCTION

Place your bid on Inknings, Line Art and other pieces. Auction starts at 1:00 p.m. - 4:00 p.m. Visit your Gallery Host between 1:00 p.m. - 4:00 p.m. and 7:00 p.m. - 9:00 p.m. in the Art Gallery, Deck 4, Midship for more information.

OFFICER PIN TRADING

Come and trade pins with the Officers of the Disney Wonder. Lobby Atrium, Deck 3, Midship, between 7:15 p.m. and 8:00 p.m.

SOPHIA FIORI LAST OPPORTUNITY BLOW OUT SALE!

This is your last chance to get your hands on our fantastic collection of Sophia Fiori Couture diamond jewelry. Drop in to the Treasure Ketch and save up to 50% off your purchase and free sizing on any Sophia Fiori ring! These exquisite diamonds are not available back home so take advantage of these stunning deals and do not miss out!

'TIL WE MEET AGAIN!

Although our time together is coming to a close, your memories will always live on! Visit Mickey's Mates for all your last minute Disney Cruise Line items.

DUTY FREE LIQUOR PROMOTION

Receive 10% off any bottle over \$100! Don't miss out this great promotion. Radar Trap, Deck 3, Forward.

CAPTAINS SIGNING

Have your cruise mementos signed by the Master of the Disney Wonder! Treasure Ketch, Deck 4, Forward at 12:15 p.m.

SOPHIA FIORI GUESS THE CARAT WEIGHT WITH CAROL

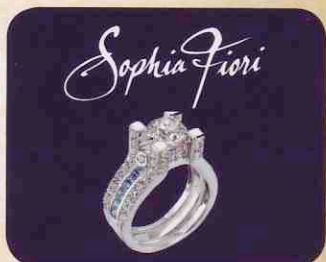
Come in to Guess the Carat Weight on a Sophia Fiori Diamond. Whoever guesses the closest wins a 5 carat Midnight Sapphire and a pair of Sapphire Stud Earrings. Guess between 9:00 a.m. and 4:00 p.m. The winner will be revealed at 4:30 p.m. in Treasure Ketch, Deck 4, Forward. Winner must be present.

TODAY'S SHOPPING SPECIAL

Stop by Treasure Ketch to try on the world's most memorable white diamond pieces and commemorate your cruise. Ask the hosts about 50% savings off US retail.

TREASURE KETCH

Deck 4, Forward



GET THE PICTURE!

Remember your Disney cruise forever when you purchase all your photos on a CD. Stop by Shutters on Deck 4, Aft and ask your friendly Shutters staff on how you can Get The Picture!

**Please note that photos are available for viewing on our interactive photo kiosks approximately five hours after being taken and are only available for purchase during this cruise.*

IMPORTANT INFORMATION

Security Notice

All Guests (including Children) who wish to disembark or embark the ship are required to present their Key to the World card at the gangway. A photo ID is also required for those Guests who are 18 years of age or older. Guests under the age of 18 are required to have a Parent, Guardian or other responsible adult sign an authorization form at the time it is given out if they wish to go ashore unaccompanied. Authorization forms are available at the gangways and Guest Services.

Cold and Flu Reminder

Please wash hands frequently and thoroughly, particularly before meals. Contact the Health Center by dialing 7-1923, should anyone in your party become ill.

Inclement Weather

For the safety of all Guests, outdoor events may be changed due to unforeseen weather conditions.

Corridor Quiet Hours

As a courtesy to all our Guests, please recognize quiet hallway hours from 10:00 p.m. til 8:00 a.m.

Environmental Message

With Disney's commitment to the Environment please refrain from throwing anything over the Ship's side. Thank you.

No Reserved Seats Policy

As a courtesy to all Guests we kindly advise that the saving of seats is not permitted in the Walt Disney Theatre, and the saving of the sun loungers is not permitted on Deck 9 and 10. Items left unattended will be returned to lost and found at Guest Services, Deck 3, Midship.

Smoking

For the comfort of our Guests the following open deck areas are designated as Smoking areas: Deck 4, Starboard side from 6:00 p.m. to 6:00 a.m. ONLY, Deck 9 Forward Starboard side at Quiet Cove and Deck 10 Starboard side. Smoking is prohibited in all Guest staterooms. Guests found smoking in their staterooms will be charged a \$250 stateroom recovery fee. Electronic cigarettes may only be used in designated smoking areas.

Sunscreen Advisory

Don't forget to apply sunscreen and insect repellent when going ashore.

Walt Disney Theatre

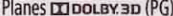

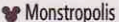
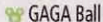
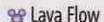
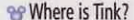

Theatrical performances may use artificial fog, strobe lights, pyrotechnics and other special effects. For the safety of our performers and the comfort of those around you, the use of any photography or video recording device or any electronic equipment is prohibited.

Verandah Safety

Please do not leave any combustible materials on your balcony when not present in your stateroom for safety reasons.

Morning	8:30	8:45	9:00	9:15	9:30	9:45	10:00	10:15	10:30	10:45	11:00	11:15	11:30	11:45	12:00	12:15	12:30	12:45	1:00	1:15	1:30	
FUNNEL VISION	Pocahontas (G) Funnel Vision				Up (PG) Funnel Vision							The Princess & the Frog (G) Funnel Vision										
BUENA VISTA THEATRE	Peter Pan (G) Duration: 1 Hour 17 Minutes				Planes DOLBY 3D (PG) Duration: 1 Hour 32 Minutes				Monsters University DOLBY 3D (G) Duration: 1 Hour 43 Minutes													
CHARACTER					Suzy & Perla Lobby Atrium		Lilo, Stitch Lobby Atrium		For detailed character appearances, call 7-PALS or refer to the Character Screen in the Lobby Atrium.							Capt. Mickey & The Gang Group Photo Lobby Atrium						
					Dopey Lobby Atrium		Hook & Snee Lobby Atrium															
FUN FOR ALL AGES	 Jimmy's Morning Show Studio Sea		 Disney's DREAMS Lobby Atrium		Captain Ken Puckett: WWII Plans to Destroy the Panama Canal Walt Disney Theatre			Bingo Pre Sales		Big Money Jackpot Wavebands		Animation - Mike Wazowski Animator's Palate		Captain's Signing Treasure Ketch				Boat Building Finals Goofy's Pool				
	Toddler Time <8:00 a.m. Flounder's Reef Nursery		Game Show: The Wheel Promenade Lounge			Ping Pong Game Wide World of Sports Deck		Cruisin' for Trivia Promenade Lounge		Autograph Session with Captain Puckett Preludes		Mickey 200 Wavebands (Limited Availability)		Disney Tunes Trivia Promenade Lounge								
ADULTS	Friends of Bill W. Outlook Cafe			Adult Crafts - 3D Crafts Animator's Palate			Footprint Analysis Outlook Cafe		Disney's Art of Entertaining: Cruise Director vs. Captain Studio Sea			Seminar: Chinese Herbs Outlook Cafe			Champagne & Sparkling Wine Tasting (21+) Cadillac Lounge			Disney Vacation Club Group Preview Studio Sea				
	Walk A Mile Preludes																					
VIBE 14-17 YEARS OLD											Youth Activities Open House										Sports Deck Fun	
EDGE 11-14 YEARS OLD											Youth Activities Open House											
OCEANEER LAB 3-12 YEARS OLD				Around the World in 7 days							Lights, Camera, Improv!			Relay Games				Lunch				
OCEANEER CLUB 3-12 YEARS OLD	Youth Activities Open House										Chip and Dale's Rescue Rangers		Toy Story Boot Camp				Lunch					
	Do Si Do with Snow White																					

Afternoon	1:45	2:00	2:15	2:30	2:45	3:00	3:15	3:30	3:45	4:00	4:15	4:30	4:45	5:00	5:15	5:30	5:45	6:00	6:15	6:30	6:45		
FUNNEL VISION	The Princess & the Frog (G) < 1:00 p.m., Funnel Vision			WALL-E (G) Funnel Vision						Virtual Tours Funnel Vision						Aladdin (G) Funnel Vision							
BUENA VISTA THEATRE	Movie Classic: Cool Hand Luke Duration: 2 Hours 6 Minutes															Planes DOLBY 3D (PG) Duration: 1 Hour 32 Minutes							
CHARACTER						Character Dance Party Lobby Atrium		For detailed character appearances, call 7-PALS or refer to the Character Screen in the Lobby Atrium										Pluto Lobby Atrium		Remember The Magic Walt Disney Theatre			
FUN FOR ALL AGES	Showtime: The Comedy & Ventriloquism of Michael Harrison Walt Disney Theatre				Bingo Pre Sales		Final Mega Jackpot Walt Disney Theatre				Talent Show Rehearsals Wavebands		Live Music with Sonic Groove Promenade Lounge		 Walt Disney Theatre								
											Friendship Rocks Walt Disney Theatre												
	Captain Puckett Autographs Preludes		Family Crafts: Origami Part Two Animator's Palate		Toddler Dance Party Studio Sea		Basketball Free Throw Wide World Of Sports		Jewish Sabbath Cadillac Lounge														
ADULTS	The Masters: Golf Putting Lobby Atrium		TV Tunes Trivia Diversions		Disney's Innovations: Theme Parks Diversions				Know It All Trivia Diversions														
	Mojito Tasting (21+) Cadillac Lounge						Martini Tasting (21+) Cadillac Lounge				Yoga Vista Spa & Salon												
VIBE 14-17 YEARS OLD	Sports Deck Fun					Picture This					Youth Activities Open House												
EDGE 11-14 YEARS OLD	Ship Factor										Brains and Brawns					Youth Activities Open House							
OCEANEER LAB 3-12 YEARS OLD			Ratatouille Cooking School			Disney Scene It			Friendship Rocks Prep			Friendship Rocks				Dinner							
OCEANEER CLUB 3-12 YEARS OLD			Mouseketeer Training			Color Yourself Heroic			Friendship Rocks Prep			Friendship Rocks		Memory Wall		Dinner							

Evening	7:00	7:15	7:30	7:45	8:00	8:15	8:30	8:45	9:00	9:15	9:30	9:45	10:00	10:15	10:30	10:45	11:00	11:15	11:30	11:45	12:00				
FUNNEL VISION	Aladdin (G) <small><6:00 p.m., Funnel Vision</small>				Finding Nemo (G) <small>Funnel Vision</small>								Enchanted (PG) <small>Funnel Vision</small>												
BUENA VISTA THEATRE					Planes  DOLBY 3D (PG) <small>Duration: 1 Hour 32 Minutes</small>								The Lone Ranger (PG-13) <small>Duration: 2 Hours 29 Minutes</small>												
CHARACTER					Mickey <small>Lobby Atrium</small>				Remember The Magic <small>Walt Disney Theatre</small>				'Til We Meet Again <small>Lobby Atrium</small>												
	For detailed character appearances, call 7-PALS or refer to the Character Screen in the Lobby Atrium.																								
FUN FOR ALL AGES		Officer Pin Trading <small>Lobby Atrium</small>	Who Wants to be a Mouseketeer? <small>Studio Sea</small>			 <small>Walt Disney Theatre</small>				Live Music with Tom Scott <small>Lobby Atrium</small>				Farewell Karaoke <small>Studio Sea</small>											
	Family Talent Show <small>Wavebands</small>																								
	Family Dance with Sonic Groove <small>Promenade Lounge</small>																								
ADULTS		Music and Martinis with Gayla Smith <small>Cadillac Lounge</small>			Live Music with Time Machine <small>Wavebands</small>								Pub Night <small>Wavebands</small>			Time Machine followed by DJ Kevin <small>Wavebands</small>									
VIBE <small>14-17 YEARS OLD</small>	Craft Time								Pump It Up								Slideshow and Info Swap				Farewell Party				
EDGE <small>11-14 YEARS OLD</small>				Craft Time						Boys and Girls Chill								How Well Do You Know Your Counselor?				Slideshow and Info Swap			
OCEANEER LAB <small>3-12 YEARS OLD</small>																									
OCEANEER CLUB <small>3-12 YEARS OLD</small>																									

Symbol for activities that will be repeated during the cruise



FOLD

Fold along the dotted lines and take me with you so you don't miss any of the fun!

FOLD

IN THE SPOTLIGHT SERIES
SOLVE IT! SERIES
JUMP UP! SERIES
CREATE & INVENT SERIES
OPEN HOUSE
CLUBHOUSE SERIES
STORYBOOK SERIES

FRIDAY, SEPTEMBER 27, 2013 - DAY AT SEA

BUENA VISTA THEATRE

DOLBY 3D DOLBY 3D



8:30 a.m. Duration: 1 hr 16 mins Rating: G	10:00 a.m., 5:30 p.m. & 8:00 p.m. Duration: 1 hr 32 mins Rating: PG	11:45 a.m. Duration: 1 hr 43 mins Rating: G	2:00 p.m. Duration: 2 hrs 6 mins Rating: PG	10:30 p.m. Duration: 2 hrs 29 mins Rating: PG-13
---	--	--	--	---

Character Appearances

SUZY & PERLA
Lobby Atrium - 9:30 a.m.

MICKEY MOUSE
Lobby Atrium - 7:30 p.m.

DOPEY
Lobby Atrium - 9:30 a.m.

'TIL WE MEET AGAIN
Lobby Atrium - 10:00 p.m.

LILO & STITCH
Lobby Atrium - 10:00 a.m.

**CAPTAIN HOOK
& MR SMEE**
Lobby Atrium - 10:00 a.m.

**CAPTAIN MICKEY & THE
GANG GROUP PHOTO**
Lobby Atrium - 12:00 p.m.

CHARACTER DANCE PARTY
Lobby Atrium - 3:00 p.m.

PLUTO
Lobby Atrium - 5:45 p.m.

REMEMBER THE MAGIC
Walt Disney Theatre
6:15 p.m. & 8:30 p.m.



Don't forget your Camera to capture those Magical Moments!

Check here each day for Character appearances.
For detailed Character appearance information, please dial 7-PALS or see the Character Information Board in the Lobby Atrium.
Meet-and-Greets will be advertised for the length of time the line will be open. To avoid disappointment, please meet at start time of appearances.

YOUTH ACTIVITIES THEMED EXPERIENCES

CLUBHOUSE SERIES
focuses on movement and features content which appeals to younger children.

JUMP UP! SERIES
includes large group games & movement-oriented activities.

WIN THE SPOTLIGHT SERIES
focuses on children's stage presence with lots of activities and enthusiasm.

STORYBOOK SERIES
is designed with a strong connection to the Disney classic stories.

CREATE & INVENT SERIES
will have a tactile focus allowing children to create and admire their work.

SOLVE IT! SERIES
are less active, but will challenge children with problem/solutions-based activities.

YOUTH ACTIVITIES OPEN HOUSE

Activities for families, adults and children of all ages to enjoy together.

SHIP DIRECTORY

YOUTH ACTIVITIES

DISNEY'S OCEANEER CLUB	DECK 5, MID	9:00 AM - 12:00 MID
DISNEY'S OCEANEER LAB	DECK 5, MID	9:00 AM - 12:00 MID
EDGE	DECK 2, MID	10:00 AM - 12:00 MID
VIBE	DECK 11, MID	11:00 AM - 1:00 AM
FLOUNDER'S REEF NURSERY	DECK 5, AFT	9:00 AM - 11:00 PM

RECREATION

GOOFLY'S POOL	DECK 9, MID	6:00 AM - 12:00 MID
MICKEY'S POOL	DECK 9, AFT	7:00 AM - 10:00 PM
MICKEY'S SLIDE	DECK 9, AFT	9:00 AM - 5:30 PM
MICKEY'S SPLASH ZONE	DECK 9, AFT	8:00 AM - 8:00 PM
PORT ADVENTURES DESK	DECK 3, MID	7:30 PM - 8:30 PM
QUIET COVE POOL	DECK 9, FWD	6:00 AM - 12:00 MID
VISTA FITNESS CENTER	DECK 9, FWD	6:00 AM - 10:00 PM
WIDE WORLD OF SPORTS DECK	DECK 10, FWD	24 HOURS

GENERAL INFORMATION

BUENA VISTA THEATRE	DECK 5, AFT	SHOWTIMES
DISNEY VACATION CLUB DESK	DECK 4, MID	9:00 AM - 12:00 PM 2:30 PM - 10:00 PM
FUNNEL VISION	DECK 9, MID	SHOWTIMES
FUTURE CRUISE SALES DESK	DECK 4, MID	9:00 AM - 12:00 PM 3:30 PM - 6:00 PM 7:00 PM - 10:00 PM
GUEST SERVICES	DECK 3, MID	24 HOURS
MEDICAL HEALTH CENTER	DECK 1, FWD	9:30 AM - 11:00 AM 4:30 PM - 7:00 PM
PRELUDES	DECK 4, FWD	5:45 PM - 6:15 PM 8:00 PM - 8:30 PM
QUARTER MASTERS (ARCADE)	DECK 9, MID	24 HOURS
SHUTTERS PHOTO GALLERY	DECK 4, AFT	10:00 AM - 11:00 PM
VISTA SPA AND SALON	DECK 9, FWD	8:00 AM - 10:00 PM
WALT DISNEY THEATRE	DECK 4, FWD	SHOWTIMES

SHOPPING

ART GALLERY	DECK 4, MID	1:00 PM - 4:00 PM 7:00 PM - 9:00 PM
HAIR BRAIDING	DECK 9, MID	12:00 PM - 4:30 PM
MICKEY'S MATES	DECK 4, FWD	9:00 AM - 11:00 PM
RADAR TRAP (DUTY FREE)	DECK 3, FWD	4:00 PM - 11:00 PM
TREASURE KETCH	DECK 4, FWD	9:00 AM - 11:00 PM

IMPORTANT NUMBERS

Fire/Security: 7-3001
Medical EMERGENCY: 7-3000
Health Center: 7-1923

DINNER MENU

Animator's Palate: 'Til We Meet Again
Parrot Cay: 'Til We Meet Again
Triton's: 'Til We Meet Again
Dining Times: 5:45pm & 8:15pm

DRINK OF THE DAY

High Tide
(Alcoholic)
Lava Smoothie
(Non - Alcoholic)

WEATHER FORECAST

Friday:
Partly Cloudy
High:
83°F/29°C

Evening Attire: Cruise Casual

DINING & LOUNGES

BREAKFAST

BEACH BLANKET BUFFET	DECK 9, AFT	7:30 AM - 10:45 AM
GOOFLY'S GALLEY	DECK 9, AFT	7:00 AM - 9:00 AM
PARROT CAY	DECK 3, AFT	8:00 AM - 10:45 AM
TRITON'S (À-LA CARTE)	DECK 3, MID	8:00 AM - 9:30 AM

LUNCH

BEACH BLANKET BUFFET	DECK 9, AFT	12:00 PM - 2:00 PM
GOOFLY'S GALLEY	DECK 9, AFT	10:30 AM - 7:00 PM
PARROT CAY	DECK 3, AFT	12:15 PM - 1:30 PM
PINOCCHIO'S PIZZERIA	DECK 9, MID	10:30 AM - 6:00 PM
PLUTO'S DOG HOUSE	DECK 9, AFT	10:30 AM - 6:00 PM
TRITON'S	DECK 3, MID	12:00 PM - 1:30 PM

DINNER

ANIMATOR'S PALATE	DECK 4, AFT	5:45 PM & 8:15 PM
PARROT CAY	DECK 3, AFT	5:45 PM
TRITON'S	DECK 3, MID	5:45 PM & 8:15 PM
PALO (18+)	DECK 10, AFT	6:00 PM - 9:00 PM
BEACH BLANKET (À-LA CARTE)	DECK 9, AFT	
PLUTO'S DOG HOUSE	DECK 9, AFT	6:00 PM - 9:30 PM

LATE NIGHT SNACKS

DIVERSIONS	DECK 3, FWD	11:00 PM - 12:00 MID
ICE CREAM AT GOOFLY'S GALLEY	DECK 9, AFT	7:00 PM - 12:00 MID
PINOCCHIO'S PIZZERIA	DECK 9, MID	9:30 PM - 12:00 MID
PROMENADE LOUNGE	DECK 3, AFT	11:00 PM - 12:00 MID

ADDED FEATURES

BEVERAGE STATION	DECK 9, AFT, PORT SIDE	24 HOURS
ROOM SERVICE	DIAL 6801 OR 6802	24 HOURS

ENTERTAINMENT - LOUNGES - BARS

Adults must be 21 and older to consume alcoholic beverages.

CADILLAC LOUNGE (18+)	DECK 3, FWD	5:30 PM - 12:00 MID
COVE CAFE (18+)	DECK 9, MID	6:30 AM - 12:00 MID
DIVERSIONS (18+ AFTER 9:00 PM)	DECK 3, FWD	11:00 AM - 3:00 PM 6:00 PM - 12:00 MID
INTERNET CAFE	DECK 3, AFT	24 HOURS
OUTLOOK CAFE (18+)	DECK 10, MID	7:00 AM - 12:00 MID
PINOCCHIO'S PIZZERIA	DECK 9, MID	9:30 AM - 11:00 PM
PLUTO'S DOG HOUSE	DECK 9, AFT	10:30 AM - 6:00 PM
PRELUDES	DECK 4, FWD	5:45 PM - 6:15 PM 8:00 PM - 8:30 PM
PROMENADE LOUNGE (FAMILY)	DECK 3, AFT	8:00 AM - 12:00 MID
SIGNALS (18+)	DECK 9, FWD	9:30 AM - 9:00 PM
STUDIO SEA	DECK 4, MID	SHOWTIMES
WAVEBANDS (18+)	DECK 3, FWD	9:45 PM - 2:00 AM

Consumers who order raw or partially cooked, ready-to-eat food of animal origin, are hereby informed that the food is not sufficiently cooked to ensure its safety.