

# PERSONAL NAVIGATOR

Disney  
Wonder

FRIDAY, OCTOBER 4, 2013

Sunrise: 7:47 a.m. Sunset: 7:47 p.m.  
Evening Attire: Cruise Casual

Friday: Overcast with showers High: 82°F/28°C

DAY AT SEA



## Featuring

The Comedy and Magic of  
David Williamson



and the  
Disney Wonder Performers

WALT DISNEY THEATRE

Deck 4, Forward

6:15 p.m. & 8:30 p.m.



As a courtesy to all Guests, we kindly advise that the saving of seats is not permitted in the Walt Disney Theatre.



Assistance available at the entrance to the Walt Disney Theatre 30 minutes prior to show time.

## Did You Know?

- 8260 cups of coffee are served each day onboard.
- Our ship weighs 90 million pounds
- There are 5390 pillows onboard
- Of the 5,000 eggs consumed at breakfast each morning, 1956 are scrambled, 552 are served sunny side up, 480 are eaten soft boiled, 984 are made into omelettes and 976 are made into other egg dishes.

**Tonnage:** 83,308 gross, 53,899 net

**Length Overall:** 294m / 964ft

(height of Eiffel Tower is 986ft)

**Maximum Speed:** 26 knots (30 miles per hour)

### Important Dates

**Keel Laid:** May 15, 1997

**Launch Date:** July 14, 1999

**Inaugural Cruise:** October 1, 1999

### Debark Talk Broadcast

Important information regarding disembarkation procedures for Galveston and your journey home will be covered in this debarkation briefing. The broadcast will be shown continuously on channel 223 of your stateroom television for your convenience.

Thank you in advance for completing your comment card.



## 'TIL WE MEET AGAIN

The world-famous  
Disney Characters and  
some of your new friends  
from the Disney Wonder  
stage shows bid you a  
charming farewell.

Lobby Atrium,  
Deck 3, Midship,  
10:00 p.m.

## Don't Miss:

### Game Show: The Wheel

Promenade Lounge, Deck 3, Aft - 9:45 a.m.

A special version of this popular TV game show.

### Captain's Signing

Treasure Ketch, Deck 4, Forward - 12:15 p.m.

Meet the Master of the Disney Wonder and have your cruise memories signed.

### Family Talent Show

Wavebands, Deck 3, Forward - 7:30 p.m.

Your fellow Guests have rehearsed and are ready to show off their talents. Rehearsal time for those already registered for our show will take place at 4:45 p.m. in WaveBands.



### TIME ZONE CHANGE

Remember to turn your clocks  
**BACK 1 HOUR** upon retiring on  
FRIDAY evening, or first thing  
SATURDAY morning.



Turn your magical vacation memories into an impressive keepsake with a personalized, one-of-a-kind PhotoBook. Fill every page with wonderful memories of your family during this cruise. Visit Shutters today, as supplies are limited and orders will close at 7:00pm on the last day of the cruise.

*\*Offer valid per stateroom only. Terms and conditions apply.  
The PhotoBook is only available for purchase during this cruise.*

## DINNER MENU

Animator's Palate: 'Til We Meet Again  
Parrot Cay: 'Til We Meet Again  
Triton's: 'Til We Meet Again

## DRINK OF THE DAY

Deep Blue Sea (Alcoholic)  
Banana Lime Ginger (Non Alcoholic)

### IMPORTANT NUMBERS

Fire/Security: 7-3001  
Medical Emergency: 7-3000  
Health Center: 7-1923



# FUN FOR ALL AGES HIGHLIGHTS

## WAKE UP WITH DISNEY JUNIOR

*Promenade Lounge, Deck 3, Aft - 8:30 a.m.*

What happens when you experience unlimited fun with your favorite Disney Junior shows? You get an exciting dance party designed especially for preschoolers ages seven and under.



## JACK-JACK'S INCREDIBLE DIAPER DASH

*Lobby Atrium, Deck 3, Midship - 10:00 a.m.*

Calling all baby cruisers! The Disney Wonder's babies take to the mat to see who's the fastest crawler of the seven seas! Register your baby 15 minutes prior to the big race.



## ANIMATION - GOOFY

*Animator's Palate, Deck 4, Aft - 11:45 a.m.*

Your Cruise Staff teach you how to draw one of your favorite Disney friends - Goofy.

## CAPTAIN'S SIGNING

*Treasure Ketch, Deck 4, Forward - 12:15 p.m.*

Meet the Master of the Disney Wonder and have your cruise memories signed.

## DISNEY CHANNEL ON DECK

*Goofy's Deck Stage, Deck 9, Midship - 12:30 p.m.*

Don't change that channel! It's time for a Disney Channel afternoon poolside! Your cruise staff will host an exciting day of games and contests in between your favorite Disney Channel shows! So sit back, relax, and enjoy the sun!



## GENERATION GAME

*Wavebands, Deck 3, Forward - 1:00 p.m.*

Join your Cruise Staff team for our kids vs. adults game show featuring a series of challenges and tasks. Who will be the champion in our battle of the generations?

## FAMILY TALENT SHOW

*Wavebands, Deck 3, Forward - 7:30 p.m.*

Your fellow Guests have rehearsed and are ready to show off their talents. Rehearsal time for those already registered for our show will take place at 4:45 p.m. in WaveBands.

## FAREWELL KARAOKE

*Studio Sea, Deck 4, Midship - 10:30 p.m.*

Bring along the entire family for one more round of karaoke. This is your last opportunity to grab the mic and sing along to your favorite song.



# ADULT ACTIVITY HIGHLIGHTS

## VISTA SPA FITNESS CLASSES & SEMINARS

*Sunrise Stretch* - Vista Spa Fitness Center - 7:00 a.m.

*Body Sculpt Boot Camp (nom. fee)* - Vista Spa Fitness Center - 7:30 a.m.

*AB Attack* - Vista Spa Fitness Center - 8:30 a.m.

*Complimentary Footprint Analysis* - Vista Spa Fitness Center 9:30 a.m. & 4:00 p.m.

*Seminar: Chinese Herbs* - Outlook Cafe - 10:15 a.m.

*Tour De Cycle* - Vista Spa Fitness Center - 5:00 p.m.



## TASTING CLASSES

*Chocolate and Beverage Pairing* (21+) - Cadillac Lounge - 12:00 p.m.

*Mixology* (21+) - Cadillac Lounge - 2:00 p.m.

*Beer Tasting* (21+) - Cadillac Lounge - 4:00 p.m.

*Whiskey Tasting* (21+) - Outlook Cafe - 10:30 p.m.

Please make reservations for tastings at Guest Services for a nominal fee. Tasting Seminars are only for Guests 21 and Older.

## DISNEY'S ART OF ENTERTAINING: APPLE STRUDEL

*Studio Sea, Deck 4, Midship - 10:15 a.m.*

Learn to create mouth-watering Apple Strudel like a professional pastry chef with an easy to follow decadent recipe.

## PUB QUIZ

*Diversions, Deck 3, Forward - 11:45 p.m.*

Join us as we test your knowledge against your fellow Guests at our Pub Quiz challenge.

## ART OF THE THEME SHOW TOUR

*Palo, Deck 10, Aft - 1:45 p.m.*

Join us on a guided ship tour and discover the key ingredients that make the Disney Wonder.

## ADULT ANIMATION CLASS - GOOFY

*Animator's Palate, Deck 4, Aft - 2:30 p.m.*

Learn simple animation techniques and then put your new skills to use by drawing some of your favorite Disney characters

## CRUISE STAFF FAREWELL

*Wavebands, Deck 3, Forward - 11:00 p.m.*

Join your Club Host and the Cruise Staff team and see our version of the funniest skit on the high seas, "If I Were Not Upon The Sea."

# \$10,000 MEGA JACKPOT

## Wavebands, Deck 3, Forward

**Card Sales - 10:45 a.m.**

**Game Starts - 11:00 a.m.**

It's Big, it's Massive, it's Supersized! It's \$10,000 MEGA Jackpot Bingo! Take home \$10,000 if you can cover your card in 46 numbers or less. If not, we carry on to play for the biggest cash prize of the session.

# FINAL JACKPOT BINGO

## Wavebands, Deck 3, Forward

**Card Sales - 3:00 p.m.**

**Game Starts - 3:30 p.m.**

The snowball jackpot **MUST BE WON** at this final session and is estimated to be over \$7,000! Beat the line and get your cards early. Who will be the lucky winner? It could be you!



# YOUTH ACTIVITIES HIGHLIGHTS

## DINE & PLAY

A convenience for families dining at 8:15 p.m., our Youth Activities Counselors will be available at 9:15 p.m. at the entrance of Triton's, Parrot Cay and Animator's Palate dining rooms to bring registered children to join the fun in the Oceaneer Club and Oceaneer Lab.



**Deck 5, Aft (7-18500) 8:00 a.m. - 11:00 p.m.**

Infants and Toddlers can enjoy toys and activities at Flounder's Reef Nursery. Reservations are first come, first served so please stop by!



**Deck 5, Midship (7-1440) 9:00 a.m. - 12:00 mid**  
(3 - 12 years old)

### THE ROYAL BALL

**10:15 a.m.**

Attend your own Royal Ball and learn to be a prince or a princess.

### WHERE IS TINK?

**11:15 a.m.**

Tinkerbell is hiding and we need your help to follow clues around Captain Hook's ship to find her.



**Deck 5, Midship (7-1445) 9:00 a.m. - 12:00 mid**  
(3 - 12 years old)

### ANIMATION ANTICS

**1:30 p.m.**

Learn simple animation techniques and then put your new skills to use by drawing some of your favorite Disney characters.

### FRIENDSHIP ROCKS

**5:00 p.m.**

Come and celebrate with all the children from the Oceaneer Club and Lab in the jammin' performance of Friendship Rocks! You won't want to miss any of the fun.



**Deck 2, Midship (7-5810) 10:00 a.m. - 12:00 mid**  
(11 - 14 years old)

### BRAINS AND BRAUNS

**3:00 p.m.**

You will compete against each other to solve clues, take part in physical challenges, and reach the finish first.

### HOW WELL DO YOU KNOW YOUR COUNSELOR?

**10:00 p.m.**

Do you think you know all there is to know about your counselors? Come test out your knowledge with all of your friends!



**Deck 11, Midship (7-18517) 11:00 a.m. - 1:00 a.m.**  
(14 - 17 years old)

### SHIP FACTOR

**2:30 p.m.**

Ready for one of the toughest challenge competitions onboard?

### DJ TRAINING

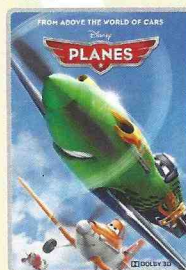
**4:00 p.m.**

Mix it up as you learn the tricks of the trade from our teen counselor DJ's.

# BUENA VISTA THEATRE

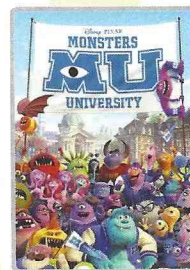
## Today's Movies

**DOLBY 3D**

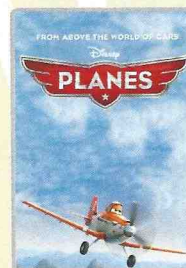


10:30 a.m., 5:30 p.m.  
& 8:00 p.m.  
Duration: 1 hr 32 mins  
Rating: PG

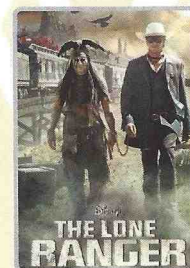
**DOLBY 3D**



12:30 p.m.  
Duration: 1 hr 43 mins  
Rating: G



3:00 p.m.  
Duration: 1 hr 32 mins  
Rating: PG



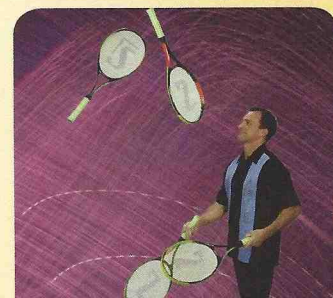
10:30 p.m.  
Duration: 2 hrs 29 mins  
Rating: PG-13



### FAMILY VARIETY ACT

Featuring the  
Comedy & Magic  
of David Williamson,  
as he entertains the  
entire family in this  
fun-filled show.

**Walt Disney Theatre,  
Deck 4, Forward,  
2:00 p.m.**



### ADULT VARIETY ACT

Featuring the  
Comedy and Juggling  
of Max Winfrey,  
as he entertains you in this  
adult exclusive show.

**Wavebands (18+),  
Deck 3, Forward,  
10:30 p.m.**

## YOUTH ACTIVITIES OPEN HOUSE

Open House is an opportunity for all to come and participate in a variety of exciting activities and free time in the Oceaneer Club, Oceaneer Lab, Flounder's Reef Nursery, Vibe and Edge throughout the cruise. During these times secured programming will still be offered in the other venue for those looking to check their children into care.

**Vibe: 5:30 p.m. - 7:00 p.m. Disney's Oceaneer Club: 9:00 a.m. - 11:00 a.m.**  
**Edge: 10:00 a.m. - 12:00 p.m.**



# MORE TO ENJOY WHILE ONBOARD



## DISNEY VACATION CLUB® GROUP PREVIEW

Want to learn more about taking magical vacations year after year? Please see a Disney Vacation Club representative on Deck 4, Midship, or call 7-2805 from your stateroom phone for more information about our interactive group presentation.



## VISIT THE FUTURE CRUISE SALES DESK EARLY TODAY

Avoid the evening rush and visit the Future Cruise Sales Desk early for your last chance to save 10% on your next cruise, receive up to a \$200 onboard credit, and pay a reduced deposit. Future Cruise Sales Desk, Deck 4, Midship.

## EXPRESS WALK OFF

Carry all your luggage and be the first to get off the ship once the ship has been cleared in Vancouver.

## QUARTER MASTERS ARCADE

Can you unlock the Grand MASTER KEY? Challenge yourself and discover the rewards that await you including cool Headphones, Underwater Cameras and Disney Princesses Prize Pack, come over to Deck 9, Midship, Quarter Masters Arcade and you could win a treasure.

## WIRELESS INTERNET: KEEPING YOU CONNECTED AT SEA

\$0.75 per minute or save money by buying blocks of time. \$55 for 100 minutes, \$100 for 250 minutes and \$150 for 500 minutes. Wireless information sheets are available at Guest Services, Deck 3, Midship, Internet Cafe, Deck 3, Aft, Cove Cafe, Deck 9, Midship and Outlook Cafe, Deck 10, Midship.

**Due to the technology involved and satellite connectivity, the onboard internet service will be noticeably slower than you may be accustomed to and might at times be interrupted or unavailable.**

## EXPRESS CHECK OUT

If you have a credit card on file, you qualify for express check out. No need to visit Guest Services to settle your account.

## SHOPPING



VISTA SPA

Deck 9, Forward - Phone: 7-1465

## BLISS SPECIAL

Due to popular demand: hotstone back massage, franjipani Scalp massage, mini booster facial, collagen eye treatment, pressure point foot massage

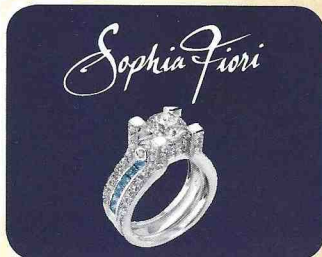
Today Only: 75 minutes for only \$129

## TODAY'S SHOPPING SPECIAL

Stop by Treasure Ketch to try on the world's most memorable white diamond pieces and commemorate your cruise. Ask the hosts about 50% savings off US retail.

**TREASURE KETCH**

Deck 4, Forward



## SOPHIA FIORI LAST OPPORTUNITY BLOW OUT SALE!

This is your last chance to get your hands on our fantastic collection of Sophia Fiori Couture diamond jewelry. Drop in to the Treasure Ketch and save up to 50% off your purchase and free sizing on any Sophia Fiori ring! These exquisite diamonds are not available back home so take advantage of these stunning deals and do not miss out!

## OFFICER PIN TRADING

Come and trade pins with the Officers of the Disney Wonder. Lobby Atrium, Deck 3, Midship, from 7:15 p.m. to 8:00 p.m.

## ART GALLERY - SILENT ART AUCTION

Place your bid on Inks, Line Art and other pieces. Auction starts at 1:00 p.m. - 4:00 p.m. Visit your Gallery Host between 1:00 p.m. - 4:00 p.m. and 7:00 p.m. - 9:00 p.m. in the Art Gallery, Deck 4, Midship for more information.

## SOPHIA FIORI GUESS THE CARAT WEIGHT WITH CAROL

Come in to Guess the Carat Weight on a Sophia Fiori Diamond. Whoever guesses the closest wins a 5 carat Midnight Sapphire and a pair of Sapphire Stud Earrings. Guess between 9:00 am to 9:00 pm. The winner will be revealed at 9:45 pm in Treasure Ketch, Deck 4, Forward. Winner must be present.



## GET THE PICTURE!

Remember your Disney Cruise forever when you purchase all your photos on a CD. Stop by Shutters on Deck 4, Aft and ask your friendly shutters staff on how you can Get The Picture!

*\*Please note that photos are available for viewing on our interactive photo kiosks approximately five hours after being taken and are only available for purchase during this cruise.*

## 'TIL WE MEET AGAIN!

Although our time together is coming to a close, your memories will always live on! Visit Mickey's Mates for all your last minute Disney Cruise Line items.

## GREAT OFFERS ONBOARD!

Get a Disney Cruise Line Beach Towel for \$14.95 when you spend \$25 or more and a Disney Cruise Line Duffle Bag for \$17.95 when you spend \$30 or more. Special Value Item Disney Cruise Line White or Blue Watch for \$14.95. Promotions available in Mickey's Mates and Treasure Ketch.

## CAPTAINS SIGNING

Have your cruise mementos signed by the Master of the Disney Wonder! Treasure Ketch, Deck 4, Forward at 12:15 p.m.

## IMPORTANT INFORMATION

### Security Notice

All Guests (including Children) who wish to disembark or embark the ship are required to present their Key to the World card at the gangway. A photo ID is also required for those Guests who are 18 years of age or older. Guests under the age of 18 are required to have a Parent, Guardian or other responsible adult sign an authorization form at the time it is given out if they wish to go ashore unaccompanied. Authorization forms are available at the gangways and Guest Services.

### Cold and Flu Reminder

Please wash hands frequently and thoroughly, particularly before meals. Contact the Health Center by dialing 7-1923, should anyone in your party become ill.

### Inclement Weather

For the safety of all Guests, outdoor events may be changed due to unforeseen weather conditions.

### Corridor Quiet Hours

As a courtesy to all our Guests, please recognize quiet hallway hours from 10:00 p.m. till 8:00 a.m.

### Environmental Message

With Disney's commitment to the Environment please refrain from throwing anything over the Ship's side. Thank you.

### No Reserved Seats Policy

As a courtesy to all Guests we kindly advise that the saving of seats is not permitted in the Walt Disney Theatre, and the saving of the sun loungers is not permitted on Deck 9 and 10. Items left unattended will be returned to lost and found at Guest Services, Deck 3, Midship.

### Smoking

For the comfort of our Guests the following open deck areas are designated as Smoking areas: Deck 4, Starboard side from 6:00 p.m. to 6:00 a.m. ONLY. Deck 9 Forward Starboard side at Quiet Cove and Deck 10 Starboard side. Smoking is prohibited in all Guest staterooms. Guests found smoking in their staterooms will be charged a \$250 stateroom recovery fee. Electronic cigarettes may only be used in designated smoking areas.

### Sunscreen Advisory

Don't forget to apply sunscreen and insect repellent when going ashore.

### Walt Disney Theatre

Theatrical performances may use artificial fog, strobe lights, pyrotechnics and other special effects. For the safety of our performers and the comfort of those around you, the use of any photography or video recording device or any electronic equipment is prohibited.

### Verandah Safety

Please do not leave any combustible materials on your balcony when not present in your stateroom for safety reasons.



# BUENA VISTA THEATRE

**DOLBY 3D**



10:30 a.m. & 8:00 p.m.  
Duration: 1 hr 32 mins  
Rating: PG

**DOLBY 3D**



12:30 p.m.  
Duration: 1 hr 43 mins  
Rating: G



3:00 p.m.  
Duration: 1 hr 32 mins  
Rating: PG



10:30 p.m.  
Duration: 2 hrs 29 mins  
Rating: PG-13

## Character Appearances

**CINDERELLA**  
Deck 4, Midship - 8:30 a.m.

**BELLE**  
Deck 4, Midship - 9:00 a.m.

**SNOW WHITE**  
Deck 4, Midship - 9:30 a.m.

**ARIEL**  
Deck 4, Midship - 10:00 a.m.

**STITCH**  
Lobby Atrium - 12:30 p.m.

**MICKEY MOUSE**  
Lobby Atrium  
12:30 p.m. & 7:30 p.m.

**PLUTO**  
Lobby Atrium  
1:00 p.m. & 5:30 p.m.

**CHIP & DALE**  
Lobby Atrium - 1:00 p.m.



Don't forget your Camera to capture those Magical Moments!

Check here each day for Character appearances.

For detailed Character appearance information, please dial 7-PALS or see the Character Information Board in the Lobby Atrium.

Meet-and-Greets will be advertised for the length of time the line will be open. To avoid disappointment, please meet at start time of appearances.

**CLUBHOUSE SERIES**  
focuses on movement and features content which appeals to younger children.

**STORYBOOK SERIES**  
is designed with a strong connection to the Disney classic stories.

**JUMP UP! SERIES**  
includes large group games & movement-oriented activities.

**CREATE & INVENT SERIES**  
will have a tactile focus allowing children to create and admire their work.

**WIN THE SPOTLIGHT SERIES**  
focuses on children's stage presence with lots of activities and enthusiasm.

**SOLVE IT! SERIES**  
are less active, but will challenge children with problem/solutions-based activities.

**YOUTH ACTIVITIES OPEN HOUSE**  
Activities for families, adults and children of all ages to enjoy together.

## SHIP DIRECTORY

YOUTH ACTIVITIES	
DISNEY'S OCEANEER CLUB	Deck 5, Mid 9:00 AM - 12:00 MID
DISNEY'S OCEANEER LAB	Deck 5, Mid 9:00 AM - 12:00 MID
EDGE	Deck 2, Mid 10:00 AM - 12:00 MID
VIBE	Deck 11, Mid 11:00 AM - 1:00 AM
FLOUNDER'S REEF NURSERY	Deck 5, Aft 8:00 AM - 11:00 PM
POOLS	
Children under 12 years of age must have adult supervision in all pools.	
GOOBY'S POOL	Deck 9, Mid 6:00 AM - 12:00 MID
MIKEY'S POOL	Deck 9, Aft 8:00 AM - 10:00 PM
MIKEY'S SLIDE	Deck 9, Aft 9:00 AM - 5:30 PM
MIKEY'S SPLASH ZONE	Deck 9, Aft 8:00 AM - 8:00 PM
QUIET COVE POOL	Deck 9, Fwd 6:00 AM - 12:00 MID

## RECREATION

VISTA FITNESS CENTER	Deck 9, Fwd 6:00 AM - 10:00 PM
WIDE WORLD OF SPORTS DECK	Deck 10, Fwd 24 HOURS

## GENERAL INFORMATION

BUENA VISTA THEATRE	Deck 5, Aft	SHOWTIMES
DISNEY VACATION CLUB DESK	Deck 4, Mid	9:00 AM - 12:00 PM 2:30 PM - 10:00 PM
FUNNEL VISION	Deck 9, Mid	SHOWTIMES
FUTURE CRUISE SALES DESK	Deck 4, Mid	10:00 AM - 1:00 PM 3:30 PM - 6:00 PM 7:30 PM - 10:00 PM
GUEST SERVICES	Deck 3, Mid	24 HOURS
MEDICAL HEALTH CENTER	Deck 1, Fwd	9:30 AM - 11:00 AM 4:30 PM - 7:00 PM
PORT & SHOPPING DESK	Deck 3, Mid	SHOWTIMES
PRELUDES	Deck 4, Fwd	5:45 PM - 6:30 PM 8:00 PM - 8:30 PM
QUARTER MASTERS (ARCADE)	Deck 9, Mid	24 HOURS
SHUTTERS PHOTO GALLERY	Deck 4, Aft	10:00 AM - 11:00 PM
VISTA SPA AND SALON	Deck 9, Fwd	8:00 AM - 10:00 PM
WALT DISNEY THEATRE	Deck 4, Fwd	SHOWTIMES

## SHOPPING

ART GALLERY	Deck 4, Mid	1:00 PM - 4:00 PM
HAIR BRAIDING	Deck 9, Mid	7:00 PM - 9:00 PM
MIKEY'S MATES	Deck 4, Fwd	10:00 AM - 12:00 PM
RADAR TRAP (DUTY FREE)	Deck 3, Fwd	2:00 PM - 7:00 PM
TREASURE KETCH	Deck 4, Fwd	9:00 AM - 11:00 PM

## IMPORTANT NUMBERS

Fire/Security: 7-3001  
Medical EMERGENCY: 7-3000  
Health Center: 7-1923

## DINING & LOUNGES

### BRUNCH

BEACH BLANKET BUFFET	Deck 9, Aft	7:30 AM - 10:30 AM
GOOBY'S GALLEY	Deck 9, Aft	6:30 AM - 9:00 AM
TRITON'S (A-LA CARTE)	Deck 3, Mid	8:00 AM - 9:30 AM

### LUNCH

BEACH BLANKET BUFFET	Deck 9, Aft	12:00 PM - 2:00 PM
GOOBY'S GALLEY	Deck 9, Aft	10:30 AM - 7:00 PM
PARROT CAY	Deck 3, Aft	12:15 PM - 1:30 PM
PINOCCHIO'S PIZZERIA	Deck 9, Mid	10:30 AM - 6:00 PM
PLUTO'S DOG HOUSE	Deck 9, Aft	10:30 AM - 6:00 PM
TRITON'S	Deck 3, Mid	12:00 PM - 1:30 PM

### DINNER

ANIMATOR'S PALATE	Deck 4, Aft	5:45 PM & 8:15 PM
PARROT CAY	Deck 3, Aft	5:45 PM & 8:15 PM
TRITON'S	Deck 3, Mid	5:45 PM & 8:15 PM
PAID (18+)	Deck 10, Aft	6:00 PM - 9:00 PM
BEACH BLANKET (A-LA CARTE)	Deck 9, Aft	
PLUTO'S DOG HOUSE	Deck 9, Aft	6:00 PM - 9:30 PM

### LATE NIGHT SNACKS

DIVERSIONS	Deck 3, Fwd	11:00 PM - 12:00 MID
ICE CREAM AT GOOBY'S GALLEY	Deck 9, Aft	7:00 PM - 12:00 MID
PINOCCHIO'S PIZZERIA	Deck 9, Mid	9:30 PM - 12:00 MID
PROMENADE LOUNGE	Deck 3, Aft	11:00 PM - 12:00 MID

### ADDED FEATURES

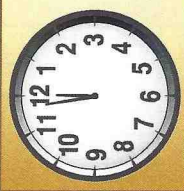
BEVERAGE STATION	Deck 9, Aft, PORT SIDE	24 HOURS
ROOM SERVICE	DIAL 6801 OR 6802	LAST ORDER 1:00 AM

### ENTERTAINMENT - LOUNGES - BARS

Adults must be 21 and older to consume alcoholic beverages.

CADILLAC LOUNGE (18+)	Deck 3, Fwd	5:30 PM - 12:00 MID
COVE CAFE (18+)	Deck 9, Mid	6:30 AM - 12:00 MID
DIVERSIONS (18+ AFTER 9:00 PM)	Deck 3, Fwd	11:00 AM - 12:00 MID
INTERNET CAFE	Deck 3, Aft	24 HOURS
OUTLOOK CAFE (18+)	Deck 10, Mid	10:00 AM - 12:00 MID
PINOCCHIO'S PIZZERIA	Deck 9, Mid	9:00 AM - 12:00 MID
PLUTO'S DOG HOUSE	Deck 9, Aft	10:30 AM - 6:00 PM
PRELUDES	Deck 4, Fwd	5:45 PM - 6:30 PM
PROMENADE LOUNGE (FAMILY)	Deck 3, Aft	8:00 PM - 12:00 MID
SIGNALS (18+)	Deck 9, Fwd	9:30 AM - 9:30 PM
STUDIO SEA	Deck 4, Mid	SHOWTIMES
WAVEBANDS (18+)	Deck 3, Fwd	SHOWTIMES

Consumers who order raw or partially cooked, ready-to-eat food of animal origin, are hereby informed that the food is not sufficiently cooked to ensure its safety.



## TIME ZONE CHANGE

Remember to turn your clocks  
**BACK 1 HOUR** upon retiring on  
**FRIDAY** evening, or first  
thing **SATURDAY** morning.



Morning	8:30	8:45	9:00	9:15	9:30	9:45	10:00	10:15	10:30	10:45	11:00	11:15	11:30	11:45	12:00	12:15	12:30	12:45	1:00	1:15	1:30						
FUNNEL VISION	Lilo & Stitch (PG) Funnel Vision								The Little Mermaid (G) Funnel Vision								Disney Channel on Deck Funnel Vision										
BUENA VISTA THEATRE									Planes  (PG) Duration: 1 Hour 32 Minutes						Monsters University  (G) Duration: 1 Hour 43 Minutes												
CHARACTER	Cinderella Dk 4, Mid	Belle Dk 4, Mid			Snow White Dk 4, Mid			Ariel Dk 4, Mid	For detailed character appearances, call 7-PALS or refer to the Character Screen in the Lobby Atrium.													Mickey Lobby Atrium			Chip & Dale Lobby Atrium		
FUN FOR ALL AGES	 Promenade Lounge Toddler Time c.8:00 A.M. Flounder's Reef Nursery	Golf Chipping Lobby Atrium		Family Crafts: Animal Masks Animator's Palate		 Lobby Atrium	Bingo Pre Sales		\$10,000 Mega Jackpot  Wavebands				Captain's Signing Treasure Ketch				Generation Game Wavebands		Ice Carving Goofy's Pool								
ADULTS	Friends of Bill W. Outlook Cafe				Walk A Mile Preludes				Disney's Art of Entertaining: Apple Strudel Studio Sea				Pub Quiz Diversions				Disney Vacation Club Group Presentation Studio Sea										
VIBE 14-17 YEARS OLD											Teens' Choice								Gotcha Registration				GOTCHA				
EDGE 11-14 YEARS OLD											Youth Activities Open House												Ship Factor				
OCEANEER LAB 3-12 YEARS OLD			Shake It Up!						Piston Cup Challenge								Lunch				Animation Antics						
OCEANEER CLUB 3-12 YEARS OLD											Youth Activities Open House						Where is Tink?				Lunch		Toy Story Boot Camp				
					Royal Crafts		The Royal Ball																				
Afternoon	1:45	2:00	2:15	2:30	2:45	3:00	3:15	3:30	3:45	4:00	4:15	4:30	4:45	5:00	5:15	5:30	5:45	6:00	6:15	6:30	6:45						
FUNNEL VISION	Bolt (PG) Funnel Vision								Toy Story 3 (G) Funnel Vision								Virtual Tours Funnel Vision		Up (PG) Funnel Vision								
BUENA VISTA THEATRE									Planes (PG) Duration: 1 Hour 32 Minutes								Planes  (PG) Duration: 1 Hour 32 Minutes										
CHARACTER									Character Dance Party Lobby Atrium								Pluto Lobby Atrium				Remember the Magic Walt Disney Theatre						
FUN FOR ALL AGES	 Walt Disney Theatre	Crafts: Card Making Promenade Lounge		Bingo Pre Sales		Final Mega Jackpot  Wavebands		Who Am I? Promenade Lounge		Talent Show Rehearsals Wavebands		Jewish Sabbath Cadillac Lounge		Family Time with Sonic Groove Promenade Lounge		 Walt Disney Theatre											
ADULTS	Disney Movie Trivia Diversions		Animal Towel Folding Studio Sea		Character Dance Party Lobby Atrium		Disney Tunes Trivia Promenade Lounge		Basketball Free Throw Wide World Of Sports		Game Show: The Feud Diversions		Carrie Crump Live Quiet Cove														
VIBE 4-17 YEARS OLD	GOTCHA				Ship Factor								DJ Training								Youth Activities Open House						
EDGE 1-14 YEARS OLD	Ship Factor		Dodgeball				Brains and Brawns				Friendship Bracelets						Youth Activities Open House										
OCEANEER LAB 3-12 YEARS OLD	Animation Antics								Friendship Rocks Prep		Friendship Rocks										Dinner						
OCEANEER CLUB 3-12 YEARS OLD	Toy Story Boot Camp		Picture This				Nemo's Coral Reef Adventure				Friendship Rocks Prep		Friendship Rocks								Dinner						
Evening	7:00	7:15	7:30	7:45	8:00	8:15	8:30	8:45	9:00	9:15	9:30	9:45	10:00	10:15	10:30	10:45	11:00	11:15	11:30	11:45	12:00						
FUNNEL VISION	Up (PG) c.6:00 p.m. Funnel Vision				Finding Nemo (G) Funnel Vision								Enchanted (PG) Funnel Vision														
BUENA VISTA THEATRE									Planes  (PG) Duration: 1 Hour 32 Minutes								The Lone Ranger (PG-13) Duration: 2 Hours 29 Minutes										
CHARACTER	Mickey Lobby Atrium				Remember the Magic Walt Disney Theatre								'Til We Meet Again Lobby Atrium														
FUN FOR ALL AGES	Officer Pin Trading Lobby Atrium		Mickey Mania Studio Sea		Family Talent Show Wavebands		 Walt Disney Theatre		Live Music with Tom Scott Lobby Atrium		Number One Hits with Sonic Groove Promenade Lounge		Live Music with Sonic Groove Promenade Lounge		Farewell Karaoke Studio Sea												
ADULTS			Music and Martinis with Gayla Smith Cadillac Lounge						Live Music with Andrew Victoria Wavebands		MLB: Oakland A's vs. Detroit Tigers Diversions (Subject to Satellite Availability)		Adult Variety: Max Winfrey Wavebands		Cruise Staff Farewell Wavebands		Guest DJ Miss Ninja Wavebands		Late Night Piano Cadillac Lounge								
VIBE 4-17 YEARS OLD	Sports Deck Fun								Pump It Up								Final Farewell Slideshow				Final Farewell						
EDGE 1-14 YEARS OLD	Youth Activities Open House								Make Up What You Missed								How Well Do You Know Your Counselor?				Final Farewell Slideshow				Final Farewell		
OCEANEER LAB 3-12 YEARS OLD	Lava Flow								Disney Scene It								Marshmallow Olympics										
OCEANEER CLUB 3-12 YEARS OLD	King Triton's Royal Court												Final Farewell														

Symbol for activities that will be repeated during the cruise



FOLD

Fold along the dotted lines and take me with you so you don't miss any of the fun!

FOLD

IN THE SPOTLIGHT SERIES  
SOLVE IT! SERIES

WARP UP! SERIES  
CREATE & INVENT SERIES  
OPEN HOUSE

CLUBHOUSE SERIES  
STORYBOOK SERIES