

PERSONAL NAVIGATOR

MONDAY, AUGUST 12, 2013

Sunrise: 6:15 a.m. Sunset: 6:55 p.m.
Evening Attire: Cruise Casual

Monday: Partly Cloudy High: 84°F/29°C
Tuesday: Partly Sunny High: 81°F/27°C

DAY AT SEA



On the eve of their graduation, three best friends go on a magical journey down the wishing well. A host of Disney characters help them discover the connection between children who are becoming adults, and adults who stay in touch with being a kid at heart.

Walt Disney Theatre
Decks 3 & 4, Forward
3:00, 6:15 & 8:30 p.m.



As a courtesy to all guests, we kindly advise that the saving of seats is **not** permitted in the Walt Disney Theatre.



Assistance available at the entrance to the Walt Disney Theatre 30 minutes prior to show time.



Disney FANTASY Fun Facts

The two huge mosaic walls based on the Disney-Pixar animated feature "Finding Nemo" are showcased in Cabanas casual-dining restaurant on Deck 11. Created for the Disney Fantasy by Italian artists, each wall is more than 25 feet wide and more than 8 feet high and contains approximately 194,500 tiles in 200 colors of hand-crafted Venetian enamel.

A team of nine artists created the mosaics based on Disney-Pixar designs depicting the underwater world of Australia's Great Barrier Reef and characters featured in the motion picture.

Point of Interest

On our voyage to St. Maarten, at approximately 11:00 p.m. this evening we will be passing Anegada Islands on the Starboard side.



FAMILY GAMESHOW

Bring the entire family and test your Disney knowledge in the high-tech interactive game show, Family Fusion.

D Lounge,
Deck 4, Midship,
7:30 p.m. & 10:15 p.m.

Don't Miss:

Jake & The Neverland Pirates

D Lounge, Deck 4, Midship - 9:00 a.m.

A'Hoy there mates, Join us for an adventure in D Lounge with Jake and the Neverland Pirates.

Art of The Theme Show Tour (18+)

Pre-Book at Guest Services, Deck 3, Midship

Join us on a guided ship tour and discover the key ingredients that make the Disney Fantasy cruise ship one-of-a-kind.

The Quest

D Lounge, Deck 4, Midship - 12:00 p.m.

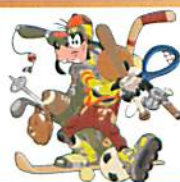
The Tube, Deck 4, Aft - 10:00 p.m. (18+)

Enjoy the wildest and wackiest scavenger team event on the seven seas!

Pub Quiz (18+)

O'Gills Pub, Deck 4, Aft - 6:30 p.m. & 8:45 p.m.

Join us as we test your knowledge against your fellow Guests at our Pub Quiz challenge.



Sport's Simulators

Digital sports simulators are available at Goofy's Sports Deck on Deck 13, Aft. This state-of-the-art virtual sports experience includes golf, basketball, baseball, hockey, football and soccer. Book now at the Port Adventures Desk, Deck 5, Midship.

DINNER MENU

Animator's Palate: Pacific Rim Cuisine
Enchanted Garden: Continental Market Cuisine
Royal Court: French Cuisine

DRINK OF THE DAY

Yellow Bird (Alcoholic)
Lava Smoothie (Non Alcoholic)

IMPORTANT NUMBERS

Fire/Security: 7-3001
Medical Emergency: 7-3000
Health Center: 7-1923

FUN FOR ALL AGES HIGHLIGHTS



JAKE & THE NEVERLAND PIRATES

D Lounge, Deck 4, Midship - 9:00 a.m.

AHoy there mates, Join us for an adventure in D Lounge with Jake and the Neverland Pirates.



DISNEY CHANNEL ON DECK

Deck Stage, Deck 11, Midship - 12:30 p.m.

Don't change that channel! It's time for a Disney Channel afternoon poolside! Your cruise staff will host an exciting day of games and contests in between your favorite Disney Channel shows! So sit back, relax, and enjoy the sun!



DISNEY VACATION CLUB GROUP PREVIEW

The Tube, Deck 4, Aft - 12:30 p.m.

Want to learn more about taking magical vacations year after year? Please see a Disney Vacation Club representative on Deck 4, Midship, or call 7-2805 from your stateroom phone for more information about our interactive group presentation.

DIAMOND AND GEMSTONE SEMINAR

The Tube, Deck 4, Aft - 2:00 p.m.

Join your Port and Shopping Guides, Mark and Candice, and become an educated shopper. They will teach you about the exotic gemstones found in the Caribbean. FREE Tanzanite Earrings and a raffle to win a Tanzanite Pendant for all in attendance.



CHIP-IT GOLF (12+)

Lobby Atrium, Deck 3, Midship - 2:00 p.m.

It's par for the course for our Guests 12 and older to compete on our special "greens" in this fun tournament.

PLAYHOUSE D LOUNGE

D Lounge, Deck 4, Midship - 5:15 p.m.

Calling our youngest of cruisers! Here is a special playtime that is just for you. Come meet new friends; and join in on the fun as your Cruise Staff team takes you through interactive activities made just for you!



CLUB NEW YEARS EVE

D Lounge, Deck 4, Midship - 10:45 p.m.

"The party don't start, till you walk in." Club New Year's Eve, you won't want to miss this journey of musical genres in history and performances by some of your favorite cruise staff. Bring your family and help us count down to a brand new year!

ADULT ACTIVITY HIGHLIGHTS



SENSES SPA FITNESS CLASSES & SEMINARS

Sunrise Stretch - Donald's Pool - 7:00 a.m.

Fab Abs - Donald's Pool - 7:30 a.m.

Body Sculpt Boot Camp (Nom. Fee) - Senses Fitness Center - 9:00 a.m.

Back Pain Solutions - Outlook - 10:15 a.m.

Eat More to Weigh Less - Senses Spa & Salon - 11:00 a.m.

Improving Your Posture-Walk in Comfort - Senses Spa & Salon - 1:00 p.m.

Group Cycling - Senses Fitness Center - 4:00 p.m.

Pilates - Senses Fitness Center - 5:00 p.m.

Fitness Frenzy (13-17, Nom. Fee) - Senses Fitness Center - 7:00 p.m.

TASTING CLASSES

Chocolate Tasting (21+) - Ooh La La (Nom. Fee, Pre Book) - 12:15 p.m.

Rum Tasting (21+) - Meridian (Nom. Fee Pre Book) - 1:00 p.m.

Mixology (21+) - Skyline (Nom. Fee, Pre Book) - 2:00 p.m.

Tequila & Margarita Tasting (21+) - Ooh La La (Nom. Fee, Pre Book) - 3:00 p.m. & 4:45 p.m.

Whiskey Tasting (21+) - Cove Cafe (Nom. Fee, Pre Book) - 10:00 p.m.

Cognac Tasting (21+) - Meridian (Nom. Fee Pre Book) - 10:30 p.m.

Please make reservations for tastings at Guest Services for a nominal fee.

Tasting Seminars are only for Guests 21 and Older.

CLUB 18*21 - LUNCH

Royal Court, Deck 3, Midship - 12:15 p.m.



CLUB 18*21 - XBOX® KINECT™ CHALLENGE

O'Gills Pub, Deck 4, Aft - 3:15 p.m.

CLUB 18*21 - MIXER

O'Gills Pub, Deck 4, Aft - 10:00 p.m.

ART OF THE THEME SHOW TOUR

Pre-Book at Guest Services, Deck 3, Midship

Join us on a guided ship tour and discover the key ingredients that make the Disney Fantasy cruise ship one-of-a-kind.

50 MOVIE QUOTES TRIVIA

O'Gills Pub, Deck 4, Aft - 4:00 p.m.

"Life is like a box of Chocolates" Know the movie? Join your Cruise Staff and test your Movie Quote knowledge.

SENSES SPA BINGO

D Lounge, Deck 4, Midship

Card Sales - 10:30 a.m.

Game Starts - 10:45 a.m.

Four CASH prizes to be won! Plus great spa prizes that will pamper you, including a mini facial and massages all courtesy of the Senses Spa and Salon. Serenity now!

\$5,000 MEGA JACKPOT BINGO

D Lounge, Deck 4, Midship

Card Sales - 4:00 p.m.

Game Starts - 4:15 p.m.

Don't miss your chance to take home big money! 4 CASH prize games and great raffle prizes to be won! Complete Game #4 in 46 numbers and win the \$5,000 Mega Jackpot!



YOUTH ACTIVITY HIGHLIGHTS

DINE & PLAY

A convenience for families dining at 8:15 p.m., our Youth Activities Counselors will be available at 9:15 p.m. at the entrance of Royal Court, Enchanted Garden and Animator's Palate dining rooms to bring registered children to join the fun in the Youth Activity areas.



Deck 5, Midship (7-1440)
(3-12 years old)

9:00 a.m. - 12:00 mid

MICKEY'S PUZZLE PLAYTIME

9:45 a.m. & 1:15 p.m.

Come and Play with Mickey & friends as they share their favorite games, puzzles and dances!

BIG TOP FUN FEST!

7:30 p.m.

It's the greatest show on Earth. Come re-discover the circus Disney style with clowns, jugglers and classic Disney cartoons.



Deck 5, Midship (7-1445)
(3-12 years old)

9:00 a.m. - 12:00 mid

PISTON CUP CHALLENGE

10:30 a.m.

It's Dinoco time and you're part of the pit crew! Design your own race car and see if you've got what it takes to end up in the Winner's Circle!

SUPER SLOPPY SCIENCE

2:00 p.m. & 9:45 p.m.

Join Professor Make-O-Mess in some of the most extreme experiments you will ever see in the world of Super Sloppy Science!



Deck 13, Midship (7-9743)
(11-14 years old)

9:00 a.m. - 1:00 a.m.

ANIMATION ANTICS

10:45 a.m.

Learn simple animation techniques and then put your new skills to use by drawing some of your favorite Disney characters.

THAT'S HILARIOUS

7:30 p.m.

Ever wanted to show off your comedy skills? Then be a part of the cast for the crazy improv show "That's Hilarious" and put on a live show for your friends.



Entrance on Deck 4, Forward (7-9418)
(14-17 years old)

9:00 a.m. - 2:00 a.m.

ZOMBIFIED

11:45 a.m.

A big movie producer is looking for zombies to help him film the finale to his latest masterpiece, Zombified.

ESPN DREAM TEAM DRAFT DAY - BASEBALL

2:30 p.m.

Play ball! Join the "Commissioner" and engage in this interactive fantasy baseball draft unlike anything you've ever seen! Can YOU draft the greatest baseball team of All-Time?

BUENA VISTA THEATRE

Today's Movies

DOLBY 3D

OC - Open Captioning

DOLBY 3D



8:00 a.m.
Duration:
1 hr 41 mins
Rating: PG



10:00 a.m.
Duration:
1 hr 43 mins
Rating: G



12:30 p.m.
Duration:
1 hr 43 mins
Rating: G



2:45 p.m.
Duration: 2 hrs 29 mins
Rating: PG-13



5:30 p.m. & 8:15 p.m.
Duration: 1 hr 53 mins
Rating: PG



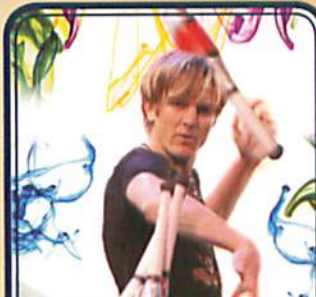
10:30 p.m.
Duration: 2 hrs 10 mins
Rating: PG-13



FAMILY VARIETY ACT

Featuring the
Comedy & Music
of John Charles,
as he entertains the
entire family in this
fun-filled show.

Walt Disney Theatre,
Deck 3 & 4, Forward,
11:00 a.m.
(Doors open at 10:45 a.m.)



ADULT VARIETY ACT

Featuring the
Comedy & Juggling
... of Mike Price,
as he entertains you in this
adult exclusive show.

The Tube (18+),
Deck 4, Aft,
10:30 p.m.

YOUTH ACTIVITIES OPEN HOUSE

Open House is an opportunity for all to come and participate in a variety of exciting activities and free time in the Oceaneer Club, Oceaneer Lab, It's A Small World Nursery, Vibe and Edge throughout the cruise. During these times secured programming will still be offered in the other venue for those looking to check their children into care.

Disney's Oceaneer Club: 9:00 a.m. - 10:30 a.m.

Vibe: 9:00 a.m. - 10:00 a.m.

Edge: 9:00 a.m. - 10:00 a.m.

MORE TO ENJOY WHILE ONBOARD

PLAN YOUR NEXT CRUISE

Book your next Disney Cruise Line vacation today and save! Don't waste time! Book your next cruise today and you'll save 10%, receive up to a \$200 onboard credit, and pay a reduced deposit! Visit the Future Cruise Sales Desk, Deck 4, Midship, or call extension 7-2848 to learn more.

DISNEY VACATION CLUB® GROUP PREVIEW

Want to learn more about taking magical vacations year after year? Please see a Disney Vacation Club representative on Deck 4, Midship, or call 7-2805 from your stateroom phone for more information about our interactive group presentation.

FINE WATCH SEMINAR

Fine Watch Seminar - 11:45 a.m. in La Piazza Deck 4, Aft. Learn the difference between a \$10 watch & a \$10,000 watch. Diamond & Gemstone Seminar - 2:00 p.m. in The Tube, Deck 4, Aft. Free Tanzanite Earrings & Raffle to win a Diamond Pendant for all in attendance.

ONBOARD AIRLINE CHECK IN

If you would like to have your boarding passes printed for you onboard and have your luggage taken to the airport for you, register before Wednesday. If you have a Disney Cruise Line airport transfer to Orlando International Airport and fly with one of the participating airlines, stop at Guest Services, Deck 3, Midship to register.

SURF @ SEA

\$0.75 per minute, or save money by buying blocks of time. \$55.00 for 100 minutes, \$100.00 for 250 minutes and \$150.00 for 500 minutes. Wireless information sheets are available at Guest Services, Deck 3, Midship.

Please note: Due to satellite connectivity, onboard internet service will be noticeably slower than you may be accustomed to and may at times be interrupted or unavailable.

FREE ON DEMAND TV

Watch Disney movies, Hollywood features, ABC Shows, and even captioned content, plus much more "On Demand" for FREE in the comfort of your stateroom! Bookmark your movie and come back to watch it later. Press MENU on your stateroom television remote control, and follow the prompts.

Disney Cruise Line. PORT ADVENTURES

Tomorrow the two nation island of St. Maarten / St. Martin awaits us. Your knowledgeable Port Adventures team is standing by to answer all your questions about the best choices for you and your family. Enjoy the beautiful and magnificent Orient Bay Beach or take a rip roaring ride on a RIB boat past the airport to the French side for some snorkeling. Visit the Port Adventures Desk, Deck 5, Midship, for more information.

SHOPPING

FRAGRANCE OF THE DAY

Stop by Whitecaps to test our selected fragrance today! Deck 3, Forward.

HELPFUL SHOPPING TIP

Don't have time to drop off your souvenirs at your stateroom before dinner or a show? For your convenience, Disney Cruise Line's merchandise locations can hold your purchased items for up to 24 hours while you enjoy the other Disney Cruise Line experiences you don't want to miss out on. Whitecaps, Sea Treasures, and Mickey's Mainsail, Deck 3, Forward.

PETITE ART PRINTS AT THE VISTA GALLERY

Are you an art lover on a budget? Do you have limited space in your suitcase or on your walls at home? There's no need to miss out on owning inspiring creations by some of Disney's greatest artists! Stop by the Vista Gallery and check out the various petite prints of artwork created by these celebrated artists. Deck 4, Midship.

ROBERTO COIN FINE JEWELRY

Did you know that each piece of Roberto Coin jewelry has a hidden ruby? Learn more about Roberto Coin and their ruby tradition today by visiting Whitecaps, Deck 3 Midship.

CELEBRATING 15 YEARS WITH DISNEY CRUISE LINE

Happy Anniversary, Disney Cruise Line! Disney Cruise Line is celebrating its 15th year with an assortment of special edition items such as graphic tees, photo albums, and more! Available for a limited time only, swing by Sea Treasures and pick up your own commemorative item! Deck 3, Midship.

BLUE GALLERY LIVE AUCTION TODAY

Start warming up your bidding muscles for today's live auction where you'll have the chance claim a beautiful piece of artwork from an array of internationally renowned artists. Also take the time to visit the Vista Gallery, Deck 4 Midship, and receive up to 50% off of US Retail Prices on Blue Gallery Artwork. FREE artwork will be given to the first 25 Guests attending the Live Auction. The Tube, Deck 4, Aft.



SENSES
SPA & SALON

SPA SPECIAL

IONTHERMY

Would you like to lose between 1 - 8 inches?
Speed up your metabolism?
Firm your muscle tone?
Improve appearance of cellulite?
If so, then Ionithermy is the best treatment for you!
50 min. \$155

VISTA GALLERY

Your last opportunity to purchase your Disney art. Shipping available. Stop by the Vista Gallery, Deck 4, Midship, to find out more.
6:00 p.m. - 10:00 p.m.



Shutters

GET THE PICTURE!

Ask a friendly photographer about Get the Picture! Plus the incredible value of an unlimited digital photo package, which includes all of your stateroom's photos. Visit Shutters today, as supplies are limited.

*Terms and conditions apply. Photos captured on your vacation are only available for purchase during this cruise.

**Please note that photos are available for viewing on our interactive photo kiosks approximately five hours after being taken and are only available for purchase during this cruise.*

IMPORTANT INFORMATION

Security Notice

All Guests (including children) who wish to disembark the ship are required to present their Key to the World card at the gangway. A photo ID is also required for those Guests who are 18 years of age or older. Guests under the age of 18 are required to have a Parent, Guardian or other responsible adult sign an authorization form at the time it is given out if they wish to go ashore unaccompanied. Authorization forms are available at the gangways and Guest Services.

Please Note:
Please remember to use plenty of sunscreen & mosquito/ Insect repellent when venturing ashore.

Cold and Flu Reminder

Please wash hands frequently and thoroughly, particularly before meals. Contact the Health Center by dialing 7-1923, should anyone in your party become ill.

Corridor Quiet Hours

As a courtesy to all our Guests, please recognize quiet hallway hours from 10:00 p.m. til 8:00 a.m.

Inclement Weather

For the safety of all Guests, outdoor events may be changed due to unforeseen weather conditions.

Environmental Message

With Disney's commitment to the Environment, please refrain from throwing anything over the Ship's side. Thank you!

No Reserved Seats Policy

As a courtesy to all our Guests, we kindly advise that the saving of seats is not permitted in the Walt Disney Theatre, and the saving of the sun loungers is not permitted on Deck 11, 12, and 13. Items left unattended will be returned to lost and found at Guest Services, Deck 3 Midship.

Smoking

For the comfort of our guests the following areas are designated as Smoking areas: - Promenade Deck (Deck 4), smoking is permitted Port Side, Aft only from 6:00 p.m. to 6:00 a.m.
- Currents - Deck 13, Forward, Port Side.
- Meridian Bar - Deck 12, Aft, Port Side, outside.
- Smoking is permitted on stateroom verandahs. Smoking is prohibited inside all guest staterooms. Guests found smoking in their staterooms will be charged a \$250 stateroom recovery fee. Electronic cigarettes may only be used in designated smoking areas.

Walt Disney Theatre

Theatrical performances may use artificial fog, strobe lights, pyrotechnics and other special effects. For the safety of our performers and the comfort of those around you, the use of any photography, video recording device or any electronic equipment is prohibited.

Verandah Safety

Please do not leave any combustible materials on your balcony when not present in your stateroom for safety reasons.

Morning	8:30	8:45	9:00	9:15	9:30	9:45	10:00	10:15	10:30	10:45	11:00	11:15	11:30	11:45	12:00	12:15	12:30	12:45	1:00	1:15	1:30
FUNNEL VISION	The Jungle Book (G) Funnel Vision						Pinocchio (G) Funnel Vision						Disney Channel on Deck Funnel Vision								
BUENA VISTA THEATRE	Brave DDOLBY 3D (PG) Duration: 1 Hour 41 Minutes < Starts at 8:00 a.m.						Monsters University DDOLBY 3D (G) - With Open Captioning Duration: 1 Hour 43 Minutes						Monsters University DDOLBY 3D (G) Duration: 1 Hour 43 Minutes > 2:17 p.m.								
CHARACTER	Mickey Dk 4, Balcony						Princess Gathering Lobby Atrium						Character Dance Party Lobby Atrium						Chip & Dale Dk 4, Balcony		
FUN FOR ALL AGES	Toddler Time D Lounge						Bingo Pre Sales						The Quest D Lounge						Disney Animation: Cartoon Physics D Lounge		
	Open House Toddler Time < Starts at 8:00 a.m.						Disney Animation: Creating a Character D Lounge						Disney Vacation Club Group Preview The Tube								
ADULTS	Family Crafts: Create an Ornament La Piazza						Cruisin' for Trivia La Piazza						Ultimate Disney Trivia O'Gills Pub						Crafts: Pipe Cleaner Creations La Piazza		
	Friends of Bill W. Outlook						Art of the Theme Show Tour Pre-Book at Guest Services						Through the Ages Trivia - Music O'Gills Pub						Posture Analysis Senses Spa & Salon		
VIBE	Youth Activities Open House						Coffee Break						Zombified						Sun Deck		
EDGE	Youth Activities Open House						Just Dance						Pictionary						Make Your Own Bracelet		
OCEANEER LAB	Magic Playfloor						Piston Cup Challenge						Lunch						Marshmallow Olympics		
OCEANEER CLUB	Mickey's Puzzle Playtime						Scavenger Hunt						Little Einstein's Adventure						Mickey's Puzzle Playtime		
Afternoon	1:45	2:00	2:15	2:30	2:45	3:00	3:15	3:30	3:45	4:00	4:15	4:30	4:45	5:00	5:15	5:30	5:45	6:00	6:15	6:30	6:45
FUNNEL VISION	Tangled (PG) Funnel Vision						Hercules (G) Funnel Vision						High School Musical (G) Funnel Vision								
BUENA VISTA THEATRE	The Lone Ranger (PG-13) Duration: 2 Hours 29 Minutes						Wreck-It Ralph DDOLBY 3D (PG) Duration: 1 Hour 53 Minutes > 7:23 p.m.														
CHARACTER	Pluto Lobby Atrium (P)						Mickey Buzz Lobby Atrium (P) Lobby Atrium (V)						Cinderella Woody Tiana Lobby Atrium (P) Lobby Atrium (V) Lobby Atrium (P)								
FUN FOR ALL AGES	Chip & Dale Dk 4, Balcony						Pluto Dk 4, Balcony						Phineas & Ferb Lobby Atrium (H)								
	Wishes Walt Disney Theatre						Bingo Pre Sales						Playhouse D Lounge D Lounge						Wishes Walt Disney Theatre		
ADULTS	Paper Plane Making La Piazza						Disney Trivia La Piazza						Family Crafts: 3D Crafts La Piazza						Live Piano with Laurence J. Blackler Lobby Atrium		
	Diamond and Gemstone Seminar The Tube						Know It All Trivia O'Gills Pub						Live Art Auction The Tube (Preview at 3:30 p.m.)						Tequila & Margarita Tasting (21+) Ooh La La (Nom. Fee, Pre Book)		
VIBE	Sun Deck Fun						ESPN Dream Team Draft Day - Baseball						Teens' Choice						Dive into DJ'ing		
EDGE	Ultimate Scavenger Hunt						Anyone Can Cook: Pizza						Pizza and Ice Cream Party						Foosball Tournament		
OCEANEER LAB	Super Sloppy Science						Wacky Relay Races						Disney Animation: Creating a Character						Xbox® Kinect™ Challenge		
OCEANEER CLUB	Memory Wall						Craft Corner						Magic Playfloor						Once Upon a Time		
ADULTS	Live Guitar with Mike Archer O'Gills Pub						Pub Quiz O'Gills Pub						The Quest The Tube						Variety: Mike Price The Tube - Juggling		
	Live Music with Indigo Sky La Piazza						Club 18*21 - Mixer O'Gills Pub						Cognac Tasting (21+) Meridian (Nom. Fee Pre Book)						70's Remix with Guest DJ Adam Subtract'em The Tube		
VIBE	Youth Activities Open House						Pump It Up						Crowning of the Couch Potato						Bring It!		
EDGE	Stop The Boat						That's Hilarious						Elephant Soccer						Picture This		
OCEANEER LAB	Anyone Can Cook						Get the Hook						Super Sloppy Science						Games & More		
OCEANEER CLUB	Big Top Fun Fest!						Game Challenge						Pluto's Pajama Party						Magic Playfloor		
ADULTS	Craft Corner																				

Symbol for activities that will be repeated during the cruise

Youth Activities Open House

FOLD

Fold along the dotted lines and take me with you so you don't miss any of the fun!

FOLD

IN THE SPOTLIGHT SERIES
SOLVE IT! SERIES

JUMP UP! SERIES
CREATE & INVENT SERIES

CLUBHOUSE SERIES
STORYBOOK SERIES

MONDAY, AUGUST 12, 2013 - DAY AT SEA

BUENA VISTA THEATRE



8:00 a.m. Duration: 1 hr 41 mins Rating: PG	10:00 a.m. Duration: 1 hr 43 mins Rating: G	12:30 p.m. Duration: 1 hr 43 mins Rating: G	2:45 p.m. Duration: 2 hrs 29 mins Rating: PG-13	5:30 p.m. & 8:15 p.m. Duration: 2 hrs 10 mins Rating: PG	10:30 p.m. Duration: 2 hrs 10 mins Rating: PG
---	---	---	---	--	---

Character Appearances

MICKEY MOUSE

Deck 4 Balcony, Midship
9:15 a.m. & 7:15 p.m.
Lobby Atrium (P) - 4:45 p.m.

PRINCESS GATHERING

Lobby Atrium - 10:00 a.m.

MINNIE MOUSE

Deck 4 Balcony, Midship
10:15 a.m.

DAISY DUCK

Deck 4 Balcony, Midship
10:45 a.m.

PRINCESS MINNIE

Deck 4 Balcony, Midship
11:15 a.m.

CHARACTER DANCE PARTY

Lobby Atrium - 12:15 p.m.

CHIP & DALE

Deck 4 Balcony, Midship
12:45 p.m. & 1:45 p.m.

JAKE - THE NEVERLAND PIRATE

Lobby Atrium (P)
1:15 p.m. & 2:15 p.m.

CAPTAIN HOOK & MR SMEE

Deck 4 Balcony, Midship
1:15 p.m. & 2:15 p.m.

PLUTO

Lobby Atrium (P) - 1:45 p.m.
Deck 4 Balcony, Midship
5:15 p.m. & 7:45 p.m.

BUZZ LIGHTYEAR

Lobby Atrium (V)
5:00 p.m., 7:30 p.m. & 10:00 p.m.

CINDERELLA

Lobby Atrium (P)
5:15 p.m., 7:15 p.m. & 10:15 p.m.

WOODY

Lobby Atrium (V)
5:30 p.m., 8:00 p.m. & 9:30 p.m.

PHINEAS & FERB

Lobby Atrium (H)
5:30 p.m., 7:45 p.m. & 9:45 p.m.

PRINCESS TIANA

Lobby Atrium (P) - 5:45 p.m.

BELLE

Lobby Atrium (P)
8:00 p.m. & 9:30 p.m.

STITCH

Deck 4 Balcony, Midship
9:30 p.m.

DONALD DUCK

Deck 4 Balcony, Midship
10:00 p.m.

(H) Hallway - (S) Starboard Side - (P) Port Side - (V) Vestibule

IMPORTANT NUMBERS

Fire/Security: 7-3001
Medical Emergency: 7-3000
Health Center: 7-1923

YOUTH ACTIVITIES THEMED EXPERIENCES

CLUBHOUSE SERIES
focuses on movement and features content which appeals to younger children.

STORYBOOK SERIES
is designed with a strong connection to the Disney classic stories.

JUMP UP! SERIES
includes large group games & movement-oriented activities.

CREATE & INVENT SERIES
will have a tactile focus allowing children to create and admire their work.

YOUTH ACTIVITIES OPEN HOUSE

A non-secured program with activities for families, adults and children of all ages to enjoy together.

IN THE SPOTLIGHT SERIES
focuses on children's stage presence with lots of activities and enthusiasm.

SOLVE IT! SERIES
are less active, but will challenge children with problem/solutions-based activities.

SHIP DIRECTORY

YOUTH ACTIVITIES

DISNEY'S OCEANEER CLUB	DECK 5, MID	9:00 AM - 12:00 MID
DISNEY'S OCEANEER LAB	DECK 5, MID	9:00 AM - 12:00 MID
EDGE	DECK 13, MID	9:00 AM - 1:00 AM
VIBE	DECK 4, FWD	9:00 AM - 2:00 AM
IT'S A SMALL WORLD NURSERY	DECK 5, MID	9:00 AM - 11:30 PM

RECREATION

AQUADUCK	DECK 12, MID	9:00 AM - 10:00 PM
AQUALAB	DECK 12, AFT	10:00 AM - 6:00 PM
DONALD'S POOL	DECK 11, MID	6:00 AM - 12:00 MID
GOLF/SPORTS SIMULATORS	DECK 13, AFT	9:00 AM - 6:00 PM
GOOFY GOLF	DECK 13, AFT	8:00 AM - 10:00 PM
GOOFY'S SPORTS DECK	DECK 13, AFT	8:00 AM - 6:00 PM
MICKEY'S POOL	DECK 11, MID	6:00 AM - 11:00 PM
MICKEY'S SLIDE	DECK 11, MID	9:00 AM - 6:00 PM
MIDSHIP DETECTIVE AGENCY	DECK 2 & 5, MID	9:00 AM - 10:00 PM
NEMO'S REEF	DECK 11, MID	9:00 AM - 6:00 PM
PORT ADVENTURES DESK	DECK 5, MID	9:00 AM - 5:00 PM 7:00 PM - 8:30 PM
QUIET COVE POOL	DECK 11, FWD	6:00 AM - 12:00 MID
SATELLITE FALLS	DECK 13, FWD	6:00 AM - 8:00 PM
SENSES FITNESS CENTER	DECK 11, FWD	6:30 AM - 10:00 PM

GENERAL INFORMATION

ARR-CADE	DECK 11, AFT	24 HOURS
ADVENTURES BY DISNEY	DECK 4, MID	12:00 PM - 3:00 PM 8:30 PM - 10:00 PM
DISNEY VACATION CLUB	DECK 4, MID	9:00 AM - 12:30 PM 2:30 PM - 10:00 PM
FUTURE CRUISE SALES DESK	DECK 4, MID	10:00 AM - 12:00 PM 2:00 PM - 6:00 PM 7:30 PM - 8:30 PM
GUEST SERVICES	DECK 3, MID	24 HOURS
MEDICAL HEALTH CENTER	DECK 1, FWD	9:30 AM - 11:00 AM 4:30 PM - 7:00 PM
PORT & SHOPPING DESK	DECK 4, MID	10:00 AM - 11:30 AM 7:30 PM - 8:30 PM
PRELUDES	DECK 3, FWD	2:30 PM - 3:15 PM 5:45 PM - 6:30 PM 8:00 PM - 8:45 PM
SENSES SPA AND SALON	DECK 11, FWD	8:00 AM - 10:00 PM
SHUTTERS PHOTO GALLERY	DECK 4, MID	10:00 AM - 11:00 PM
SHUTTERS DIGITAL	DECK 4, MID	24 HOURS
BIBBIDI BOBBIDI BOUTIQUE	DECK 5, MID	9:00 AM - 9:00 PM
MICKEY'S MAINSAIL	DECK 3, FWD	9:30 AM - 11:00 PM
QUACKS	DECK 11, MID	10:00 AM - 4:00 PM
SEA TREASURES	DECK 3, FWD	9:30 AM - 11:00 PM
VISTA GALLERY	DECK 4, MID	10:00 AM - 10:00 PM
WHITECAPS	DECK 3, FWD	9:30 AM - 11:00 PM
WHOZITS & WHATZITS	DECK 11, MID	10:00 AM - 4:00 PM

SHOPPING

DINNER MENU
 Animator's Palate: Pacific Rim
 Enchanted Garden: Continental Market
 Royal Court: French Dinner
 Dining Times: 5:45 p.m. & 8:15 p.m.

DRINK OF THE DAY
 Yellow Bird (Alcoholic)
 Lara Smoothie (Non Alcoholic)

WEATHER FORECAST
 Monday: Partly Cloudy
 High: 84°F/29°C
 Tuesday: Partly Sunny
 High: 81°F/27°C

Evening Attire: Cruise Casual

DINING & LOUNGES

BREAKFAST

CABANAS CONTINENTAL	DECK 11, AFT	7:00 AM - 7:30 AM
CABANAS	DECK 11, AFT	7:30 AM - 11:30 AM
ENCHANTED GARDEN	DECK 2, MID	8:30 AM - 11:00 AM
ROYAL COURT	DECK 3, MID	8:00 AM - 9:30 AM

LUNCH

CABANAS	DECK 11, AFT	11:30 AM - 2:00 PM
FILMORE'S FAVORITES	DECK 11, MID	11:00 AM - 6:00 PM
LUIGI'S PIZZA	DECK 11, MID	11:00 AM - 6:00 PM
ROYAL COURT	DECK 3, MID	12:00 PM - 1:30 PM
TOW MATER'S GRILL	DECK 11, MID	11:00 AM - 11:00 PM

DINNER

ANIMATOR'S PALATE	DECK 3, AFT	5:45 PM & 8:15 PM
ENCHANTED GARDEN	DECK 2, MID	5:45 PM & 8:15 PM
ROYAL COURT	DECK 3, MID	5:45 PM & 8:15 PM
CABANAS TABLE SERVICE	DECK 11, AFT	6:30 PM - 8:30 PM
PALO (18+) (Reservations Req. & Now Fee Applies)	DECK 12, AFT	6:00 PM - 8:30 PM
REMY (18+) (Reservations Req. & Now Fee Applies)	DECK 12, AFT	6:00 PM - 8:30 PM

LATE NIGHT SNACKS

LA PIAZZA (18+)	DECK 4, AFT	10:45 PM - 11:45 PM
LUIGI'S PIZZA	DECK 11, MID	9:30 PM - 12:30 AM

ADDED FEATURES

BEVERAGE STATION	DECK 11, MID	24 HOURS
EYE SCREAM	DECK 11, MID	11:00 AM - 11:00 PM
ROOM SERVICE	DIAL 0	24 HOURS

ENTERTAINMENT - LOUNGES - BARS

Adults must be 21 and older to consume alcoholic beverages.

BON VOYAGE	DECK 3, MID	10:00 AM - 11:00 PM
COVE BAR (18+)	DECK 11, FWD	10:30 AM - 11:00 PM
COVE CAFE (18+)	DECK 11, FWD	7:00 AM - 12:00 MID
CURRENTS (18+)	DECK 13, FWD	10:00 AM - 11:00 PM
D LOUNGE	DECK 4, MID	SHOWTIMES
FROZONE TREATS	DECK 11, MID	10:00 AM - 10:00 AM
LA PIAZZA	DECK 4, AFT	3:00 PM - 12:00 MID
MERIDIAN (18+)	DECK 12, AFT	10:00 AM - 12:00 MID
O'GILL'S PUB (18+ AFTER 9:00 PM)	DECK 4, AFT	12:00 PM - 12:00 MID
OOH LA LA (18+)	DECK 4, AFT	5:30 PM - 12:00 MID
OUTLOOK	DECK 14, MID	SUNSET TIMES
SKYLINE (18+)	DECK 4, AFT	5:30 PM - 12:00 MID
THE TUBE (18+)	DECK 4, AFT	10:00 PM - 2:00 AM
VISTA CAFE	DECK 4, MID	7:30 AM - 11:00 PM
WAVES	DECK 12, AFT	10:00 AM - 6:00 PM

Consumers who order raw or partially cooked, ready-to-eat food of animal origin, are hereby informed that the food is not sufficiently cooked to ensure its safety.

GOOFY'S SPORTS Digital Simulators



Sports Simulator
(Basketball, Baseball, Hockey, Football or Soccer) \$12 / half hr, \$20 / hr

Golf Simulator
\$25 / half hr, \$45 / hr.

Reservations can be made at the Port Adventures Desk, Deck 5, Midship or at the Simulators, Deck 13, Aft