

# PERSONAL NAVIGATOR



SATURDAY, AUGUST 3, 2013

Sunrise: 6:39 a.m. Sunset: 7:58 p.m.  
Evening Attire: Optional Dress Up  
All Ashore: 8:30 a.m.  
All Aboard: 5:00 p.m.  
Gangway: Deck 1, Midship/Deck 1, Aft &  
Saturday: Partly Sunny High: 80°F/27°C  
Sunday: Sunny High: 82°F/28°C

DISNEY'S CASTAWAY CAY

## Disney's Believe

Genie from Aladdin and many of Disney's most-beloved magic makers take a father on a magical journey to show him that anything is possible if you just believe.

WALT DISNEY THEATRE  
Deck 3 & 4, Forward  
6:15 P.M. & 8:30 P.M.



Assistance available at the entrance to the Walt Disney Theatre 30 minutes prior to show time.



## Disney's Castaway Cay

Reserved exclusively for Guests on Disney Cruise Line Bahamian and Caribbean cruise vacations, Castaway Cay is Disney's private port-of-call paradise. On this island, enjoy tropical leisure activities, such as snorkeling, boating, swimming and sunbathing.

### Friendly Reminders

- Serenity Bay is reserved for Guests 18 and older.
- Your Key To The World Card will need to be used for all transactions on Disney's Castaway Cay except for the Post Office.
- A limited number of all-terrain wheelchairs are available across from Scuttle's Cove.
- For your convenience, beach towels are available as you leave the ship; please return them at the gangway at the end of your day.
- Due to our commitment to the environment, we ask that seashells, coral and other natural treasures be left undisturbed at Disney's Castaway Cay for all to enjoy.

### Debark Talk Broadcast

Your Cruise Director, Christiaan, presents important information, including U.S. Customs and Border Protection procedures. Tune in to Channel 5 of your stateroom TV. Please place your luggage outside your stateroom between 8:30 p.m. - 10:30 p.m.

Thank you in advance for completing your comment card.

SEA YA'  
REAL SOON!

Mickey and some of his Disney friends invite you to join them in the ship's Atrium. You won't want to miss this very special farewell meet and greet.

Bring your cameras!

10:15 p.m.  
Lobby Atrium,  
Deck 3, Midship



## Don't Miss:

### runDisney: Castaway Cay 5K (12+)

*Evolution, Deck 4, Aft - 8:15 a.m.*

We will depart the ship at 8:30 a.m. and make our way to the Bike Rentals where the run will begin. Runners meet in Evolution, Deck 4, Aft, at 8:15 a.m.

### Crab Races

*Island Gazebo 1, Disney's Castaway Cay, - 11:45 a.m.*

*Island Gazebo 2, Disney's Castaway Cay, - 12:45 p.m.*

Watch some local sea creatures make a break for the finish line.

### Captain's Signing

*Whitecaps, Deck 3, Forward - 7:15 p.m.*

Meet the Master of the Disney Dream and have your cruise memories signed.

### 80's Music Challenge (18+)

*Evolution, Deck 4, Aft - 10:45 p.m.*

"Moon Walk" back to the 80's as we put your musical knowledge of the decade to the test.

### Visit The Future Cruise Desk Early Today

Please visit the Future Cruise Desk, Deck 4, Midship, as early as possible today. The last day of the cruise tends to get busy in the evening, and we want to be sure you have the opportunity to save 10% on your next cruise, receive up to a \$200 onboard credit, and pay a reduced deposit! Tune to Channel 8 for details.

## DINNER MENU

Animator's Palate: Pacific Rim Cuisine  
Enchanted Garden: Continental Market  
Royal Palace: French Dinner

## DRINK OF THE DAY

Bahama Mama (Alcoholic)  
Coco Bali (Non Alcoholic)

## IMPORTANT NUMBERS

Fire/Security: 7-3001  
Medical Emergency: 7-3000  
Health Center: 7-1923

# FAMILY ACTIVITY HIGHLIGHTS



## RUNDISNEY: CASTAWAY CAY 5K (12+)

*Evolution, Deck 4, Aft - 8:15 a.m.*

We will depart the ship at 8:30 a.m. and make our way to the Bike Rentals where the run will begin. Runners meet in Evolution, Deck 4, Aft, at 8:15 a.m.

## ISLAND POWER WALK, DISNEY'S CASTAWAY CAY

*Meet at the Post Office - 9:30 a.m.*

Join your Cruise Staff for a brisk walk around the island. Meet outside, on the pier by the Post Office. Meet time is 9:30 a.m. Walk leaves promptly at 9:45 a.m.

## FAMILY WHALE DIG

*Monstro Point, Disney's Castaway Cay - 1:00 p.m.*

Our island paleontologist leads us in the excavation of a giant whale skeleton and other fossilized treasures! Make no bones about it, this is an adventure every beachcomber is sure to dig!

## DISNEY VACATION CLUB GROUP PREVIEW

*Evolution, Deck 4, Aft - 4:30 p.m.*

Want to learn more about taking magical vacations year after year? Please see a Disney Vacation Club representative on Deck 4, Midship, or call 7-2805 from your stateroom phone for more information about our interactive group presentation.

## DISNEY TRIVIA

*D Lounge, Deck 4, Midship - 7:30 p.m.*

Navigate your way through another round of questions to test how much you really know about Disney.

## DREAM QUEST

*D Lounge, Deck 4, Midship - 9:45 p.m.*

Enjoy the wildest and wackiest scavenger team event on the seven seas!

## FAMILY SUPERSTAR KARAOKE

*D Lounge, Deck 4, Midship - 10:45 p.m.*

Join your Cruise Staff in D Lounge tonight and sing along to your favorite song - fun for everyone.



# ADULT ACTIVITY HIGHLIGHTS

## SENSES SPA FITNESS CLASSES & SEMINARS

*Body Sculpt Boot Camp - Goofy's Sports Deck - 8:00 a.m.*

*Wake Up & Stretch Class - Senses Fitness Center - 9:00 a.m.*

*Detox for Health & Weight Loss - Senses Spa & Salon - 10:00 a.m.*

*Yoga on the Beach - Serenity Bay - 10:30 a.m.*

*Good Feet: Improving Posture - Senses Fitness Center - 3:30 p.m.*

*Pathway to Pilates - Senses Fitness Center - 4:00 p.m.*

*Acupuncture Seminar - Senses Spa & Salon - 4:30 p.m.*



## TASTING CLASSES

*Martini Tasting (21+) - Meridian (Pre Book, Nom. Fee) - 4:00 p.m.*

*Beer Tasting (21+) - 687 Pub (Pre Book, Nom. Fee) - 4:00 p.m.*

Please make reservations for tastings at Guest Services for a nominal fee.

Tasting Seminars are only for Guests 21 and Older.



## CLUB 18\*21 - BASKETBALL FREE THROW

*In Da Shade Game Pavilion, Disney's Castaway Cay - 1:00 p.m.*

## CLUB 18\*21 - MINI GOLF

*Goofy's Sports Deck, Deck 13, Aft - 5:00 p.m.*

## CLUB 18\*21 - FAREWELL

*Evolution, Deck 4, Aft - 10:00 p.m.*

## ART OF THE THEME SHOW TOUR

*Meet at Meridian, Deck 12, Aft - 2:45 p.m.*

Join us on a guided ship tour and discover the key ingredients that make the Disney Dream cruise ship one-of-a-kind.

## MAKING OF THE DREAM

*Evolution, Deck 4, Aft - 3:00 p.m.*

Explore the origins of Disney Cruise Line and the latest and greatest innovations conjured especially for the Disney Dream in this fascinating and entertaining behind-the-scenes program.

## DREAM QUEST

*Evolution, Deck 4, Aft - 10:15 p.m.*

Enjoy the wildest and wackiest scavenger team event on the seven seas!

## 80'S MUSIC CHALLENGE

*Evolution, Deck 4, Aft - 10:45 p.m.*

"Moon Walk" back to the 80's as we put your musical knowledge of the decade to the test.



## \$5,000 FINAL MEGA JACKPOT BINGO



## D Lounge, Deck 4, Midship

**Card Sales - 4:15 p.m.**

**Game Starts - 4:30 p.m.**

Join us for four cash prize games. If you cover your card in 46 numbers or less on the final game, \$5,000 could be yours! If not, we will still be playing for the HIGHEST cash prize of the cruise.

# YOUTH ACTIVITIES HIGHLIGHTS

## Dine & Play

A convenience for families dining at 8:15 p.m., our Youth Activities Counselors will be available at 9:15 p.m. at the entrance of Royal Palace, Enchanted Garden and Animator's Palate dining rooms to bring registered children to join the fun in the Youth Activity areas.



**Deck 5, Midship (7-1440) 4:00 p.m. - 12:00 mid**  
(3 - 12 years old)

## CAMP ROCKING OUT!

7:00 p.m.

Discover your inner Jonas Brother and relive the fun of Camp Rock films. Singing and dancing, it's more fun than you ever thought was possible!

## ANIMATION ANTICS

9:30 p.m.

Learn simple animation techniques and then put your new skills to use by drawing some of your favorite Disney characters.



**Deck 5, Midship (7-1445) 5:00 p.m. - 12:00 mid**  
(3 - 12 years old)

## PISTON CUP CHALLENGE

6:15 p.m.

It's Dinoco time and you're part of the pit crew! Design your own race car and see if you've got what it takes to end up in the Winner's Circle!

## SUPER SLOPPY SCIENCE

10:30 p.m.

Join Professor Make-O-Mess in some of the most extreme experiments you will ever see in the world of Super Sloppy Science!



**Deck 13, Midship (7-9743)**  
(11 - 14 years old)

4:00 p.m. - 12:00 mid

## GHOST VOYAGERS

9:00 p.m.

The ship has come upon some mysterious waters and strange things are afoot. Join a paranormal expert to help investigate the area and track down any evidence of ghostly beings on the ship.

## FAREWELL DANCE PARTY

11:00 p.m.

Join your fellow teen cruisers for this fun-filled dance party.



**Entrance on Deck 4, Forward (7-9417)**  
(14 - 17 years old)  
5:00 p.m. - 1:00 a.m.

## THAT'S HILARIOUS

6:00 p.m.

Ever wanted to show off your comedy skills? Then be a part of the cast for the crazy improv show "That's Hilarious" and put on a live show for your friends.

## PUMP IT UP

9:00 p.m.

Join us in the Fitness Center for a Teen Only workout. Meet in Vibe to join in!

# BUENA VISTA THEATRE

## Today's Movies

CC - Open Captioning



8:30 a.m.  
Duration: 2 hrs 29 mins  
Rating: PG-13



11:30 a.m.  
Duration: 1 hr 43 mins  
Rating: G

DOLBY 3D



2:00 p.m. & 10:30 p.m.  
Duration: 2 hrs 29 mins  
Rating: PG-13



5:15 p.m. & 7:45 p.m.  
Duration: 2 hrs 10 mins  
Rating: PG-13



Bring the entire family  
and test your  
Disney knowledge  
in the high-tech  
interactive game show,  
Family Fusion.

**D Lounge,**  
**Deck 4, Midship,**  
10:15 p.m.



Dance the night away as our  
Guest DJ spins all the latest  
mixes from today with some  
90's classics thrown in for  
you to get down!

**Evolution (18+),**  
**Deck 4, Aft,**  
11:15 p.m.

## YOUTH ACTIVITIES OPEN HOUSE

Open House is an opportunity for all to come and participate in a variety of exciting activities and free time in It's A Small World Nursery, the Oceaneer Club, Oceaneer Lab, Edge and Vibe throughout the cruise. During these times secured programming will still be offered in the other venues for those looking to check their children into care.

**It's a Small World Nursery:** 8:00 a.m. - 9:00 a.m.

**Disney's Oceaneer Lab:** 9:00 a.m. - 5:00 p.m.

**Vibe:** 4:00 p.m. - 5:00 p.m.

**Edge:** 3:00 p.m. - 4:00 p.m.

# MORE TO ENJOY WHILE ONBOARD

## PLAN YOUR NEXT CRUISE

Book a future cruise today and you'll save 10%, receive up to a \$200 onboard credit, and pay a reduced deposit! Tune to Channel 8 on your stateroom TV for details and visit the Future Cruise Sales Desk, Deck 4, Midship.

## EXPRESS WALK OFF

Take your bags directly off the ship with express walk off. This option allows guests to take their luggage off the ship at their leisure once the ship has been cleared by the local authorities. You won't need to wait for your luggage to enter the terminal and there is no need to claim it inside the terminal building. Please note that no assistance with luggage is provided for this option.

## DISNEY VACATION CLUB® GROUP PREVIEW

Want to learn more about taking magical vacations year after year? Please see a Disney Vacation Club representative on Deck 4, Midship, or call 7-2805 from your stateroom phone for more information about our interactive group presentation.



## SALON TASTER SPECIAL

Choose from scalp massage, European facial, hand treatment, sunglow make-over, hair treatment, eye-collagen treatment, foot and ankle massage and neck and shoulder massage. Three for \$99, five for \$119, and eight for \$139.

Receive 50 minutes Cabana Island Massage for \$99 – Serenity Bay

*Senses Spa & Salon, Deck 11, Forward, Ext. 7-1465*

## PROVENANCE GEMS PRESENTS:

### "GEMSTONE OF THE NEW MILLENNIUM"

Astonishingly beautiful, exotic and rare - zultanite is an extraordinary color-change gemstone. Like tanzanite, zultanite is so rare that it is only found in one location worldwide, high in Turkey's Anatolian Mountains.

A rising star in fine jewelry and exclusive to Provenance Gems.

**WHITECAPS**

*Deck 3, Forward*



## GET THE PICTURE

Grand Staircase – Groups accommodated

*Lobby Atrium, Deck 3, Midship*

*5:00 p.m. – 6:15 p.m. & 7:00 p.m. – 8:30 p.m.*

Create a personal storybook of your cruise to share with family and friends.

Photobook orders close at 10:00 p.m.

\*Please note that photos are available for viewing on our interactive photo kiosks approximately three hours after being taken and are only available for purchase during this cruise.

Disney CRUISE LINE

## PORT ADVENTURES

Welcome to Disney's Island Paradise Castaway Cay! Today is the day to relax in an inner tube, snorkel in the Caribbean blue, get up-close and personal to real life stingrays or fly high in the sky on a parasail excursion during a breathtaking aerial adventure. Visit Marge's Barges or one of the rental locations and our friendly team will assist in making any last minute bookings.

## PORT ADVENTURES MEETING TIMES AND LOCATIONS

As per ticket	Castaway Ray's Stingray Adventure	Gil's Fins and Boats
As per ticket	Castaway Cay Bottom Fishing	Marge's Barges
As per ticket	Glass Bottom Boat	Marge's Barges
As per ticket	Nature Walk and Kayaking	As per ticket
As per ticket	Parasailing	Marge's Barges
9:00 a.m.	Teen Wild Side	Vibe
As per ticket	Single & Double Watercraft	Boat Beach

## CASTAWAY CAY ISLAND RENTALS

Bicycles	9:00 a.m. - 4:00 p.m.	Bike Rentals
Boats	9:00 a.m. - 4:00 p.m.	Boat Beach
Snorkeling Gear	9:00 a.m. - 3:30 p.m.	Gil's Fins and Boats / Flippers and Floats
Float	9:00 a.m. - 3:30 p.m.	Gil's Fins and Boats / Flippers and Floats
Getaway Package	9:00 a.m. - 3:30 p.m.	Gil's Fins and Boats / Flippers and Floats

Reservations can be made on the island at each rental location. Castaway Ray's walk up reservations can be made at Gil's Fins and Boats on Family Beach.

## SHOPPING

### CASTAWAY CAY TREASURES

She Sells Seashells And Everything Else and Buy the Seashore are your island memory destinations for apparel, plush, postcards, swimwear, and, well, everything else! Get your Run Disney Castaway Cay 5K tee exclusively at Buy the Seashore. Island purchases may be delivered to the ship for pickup after 6:00 p.m. in Whitecaps.

### HAPPY ANNIVERSARY, DISNEY CRUISE LINE!

To celebrate its 15th year, an array of Disney Cruise Line 15th Anniversary items will be available at Sea Treasures. From Pins to graphic tees, you can pick up a commemorative souvenir for the whole family! Deck 3, Midship.

### GOING ONCE, GOING TWICE, YOURS!

The silent auction closes tonight at 8:00 p.m. Make sure you come place a bid on your favorite pieces. Experience our Disney Pixar collection and see the many other exciting prints and canvas wraps also available for purchase. Vista Gallery, Deck 4, Midship.

### TAX AND DUTY FREE HIGHLIGHT

Any liquor purchases you have made throughout the voyage will be delivered to your stateroom today, packaged safely for your journey home. Experience the fragrances, jewelry, and liquors we have onboard at excellent duty free prices tonight as we will not be open in Port Canaveral. Satisfy your sweet tooth with our selection of Godiva chocolate. Whitecaps, Deck 3, Forward.

### CAPTAIN'S SIGNING

Come to Whitecaps at 7:15 p.m. to have your Disney Dream merchandise signed by the Master of the Disney Dream, Captain Henry. Stunning replica ships are available in Sea Treasures, Deck 3, Forward.

Due to port regulations, when the ship is docked, the stores will remain closed.

## IMPORTANT INFORMATION

### Security Notice

All Guests (including children) who wish to disembark the ship are required to present their Key to the World card at the gangway. A photo ID is also required for those Guests who are 18 years of age or older. Guests under the age of 18 are required to have a Parent, Guardian or other responsible adult sign an authorization form at the time it is given out if they wish to go ashore unaccompanied. Authorization forms are available at the gangways and Guest Services.

### Cold and Flu Reminder

Please wash hands frequently and thoroughly, particularly before meals. Contact the Health Center by dialing 7-1923, should anyone in your party become ill.

### Corridor Quiet Hours

As a courtesy to all our Guests, please recognize quiet hallway hours from 10:00 p.m. til 8:00 a.m.

### Inclement Weather

For the safety of all Guests, outdoor events may be changed due to unforeseen weather conditions.

### Environmental Message

With Disney's commitment to the environment, please refrain from throwing anything over the ship's side. Thank you!

### No Reserved Seats Policy

As a courtesy to all our Guests, we kindly advise that the saving of seats is not permitted in the Walt Disney Theatre, and the saving of the sun loungers is not permitted on Deck 11, 12 and 13. Items left unattended will be returned to lost and found at Guest Services, Deck 3, Midship.

### Smoking

For the comfort of our guests the following areas are designated as Smoking areas:

- Deck 13, Forward, port side, by "Currents"
- Deck 12, Aft, port side outdoor area that is accessible through the Meridian Lounge
- Deck 4, Aft, port side from 6:00 p.m. to 6:00 a.m. only (all of Deck 4 is no smoking from 6:00 a.m. to 6:00 p.m.)
- Smoking is permitted on stateroom verandahs. Smoking is prohibited inside all guest staterooms. Guests found smoking in their staterooms will be charged a \$250 stateroom recovery fee. Electronic cigarettes may only be used in designated smoking areas.

### Walt Disney Theatre

Theatrical performances may use artificial fog, strobe lights, pyrotechnics and other special effects. For the safety of our performers and the comfort of those around you, the use of any photography, video recording devices or any electronic equipment is prohibited.

### Verandah Safety

Please do not leave any combustible materials on your balcony when not present in your stateroom for safety reasons.

Morning	8:30	8:45	9:00	9:15	9:30	9:45	10:00	10:15	10:30	10:45	11:00	11:15	11:30	11:45	12:00	12:15	12:30	12:45	1:00	1:15	1:30			
FUNNEL VISION	Peter Pan (G) Funnel Vision						Mary Poppins (G) Funnel Vision						Pixar Short Films (G) Funnel Vision											
BUENA VISTA THEATRE	The Lone Ranger  (PG-13) Duration: 2 Hours 29 Minutes						Monsters University (G) Duration: 1 Hour 43 Minutes																	
CHARACTER	Donald Gangway	Tinker Bell Lobby Atrium (V)	Mickey Scuttles Cove	Jack Sparrow Pathway	Minnie Scuttles Cove	Hook & Smee Post Office	Mickey Rustmore	Chip & Dale Post Office	Captain Jack Sparrow Pelican Point Tram Stop	Character Dance Party Gazebo 1														
		Hook & Smee Post Office	Pluto Rustmore	Chip & Dale Post Office	Goofy Rustmore		Pluto Scuttles Cove	Daisy Gangway	Goofy Scuttles Cove															
FUN FOR ALL AGES	Meet in Evolution at 8:15 a.m. (Departs at 8:30 a.m.)			Island Power Walk Meet at the Post Office, Disney's Castaway Cay						Crab Races Island Gazebo 1			Dance Party Gazebo 1			Crab Races Island Gazebo 2								
				DJ Dan Spins on the Island Island Gazebo 1, Disney's Castaway Cay						Basketball Free Throw In Da Shade			Family Whale Dig Monstro Point, Disney's Castaway Cay											
	Open House It's A Small World Nursery			Youth Activities Open House Disney's Oceaneer Lab																				
ADULTS	Friends of Bill W. Outlook						Yoga on the Beach Serenity Bay						Basketball Free Throw In Da Shade			Club 18*21 Basketball Free Throw In Da Shade								
	Wake Up & Stretch Class Senses Fitness Center						Detox for Health & Weight Loss Senses Spa & Salon																	
VIBE 14-17 YEARS OLD	The Wild Side - Meet at Vibe						Hangin' at Teen Hideout						Lunch at Cookies Too											
EDGE 11-14 YEARS OLD							Sand Soccer						Hangin' at In Da Shade			Lunch at Cookies Too			Pelican Plunge			In Da Shade		
SCUTTLE'S COVE	Water Relays						The Dig at Monstro Point						Treasure Hunt			Lunch			Sebastian's Musical Sea Search					
OCEANEER LAB 3-12 YEARS OLD	Youth Activities Open House																							
OCEANEER CLUB 3-12 YEARS OLD																								

Afternoon	1:45	2:00	2:15	2:30	2:45	3:00	3:15	3:30	3:45	4:00	4:15	4:30	4:45	5:00	5:15	5:30	5:45	6:00	6:15	6:30	6:45	
FUNNEL VISION	Aladdin (G) Funnel Vision						The Jungle Book (G) Funnel Vision						Fantasia 2000 (G) Funnel Vision									
BUENA VISTA THEATRE	The Lone Ranger (PG-13) Duration: 2 Hours 29 Minutes						Iron Man 3  (PG-13) Duration: 2 Hours 10 Minutes															
CHARACTER							Stitch Gangway	Princess Gathering Lobby Atrium			Mickey Dk 4, Balcony			Goofy Lobby Atrium (V)	Pluto Lobby Atrium (V)			Chip & Dale Dk 4, Balcony				
								Hook & Smee Gangway	Minnie Dk 4, Balcony			Daisy Preludes			Donald Preludes							
FUN FOR ALL AGES	Live Music with Dreem Island Gazebo 1, Disney's Castaway Cay			DJ Dan Spins on the Island Gazebo 1			Disney Animation: Creating a Character D Lounge			Bingo Pre Sales D Lounge			\$5,000 Final Mega Jackpot D Lounge			Live Music with Midtown Lobby Atrium			Walt Disney Theatre			
	Youth Activities Open House Disney's Oceaneer Lab			Youth Activities Open House Edge			Youth Activities Open House			Disney Vacation Club Group Preview Evolution			Balazs Pecs LIVE District Lounge									
ADULTS	Making of the Dream Evolution						Martini Tasting (21+) Meridian (Pre Book, Nom. Fee)			Club 18*21 - Mini Golf Sports Deck												
	Art of The Theme Show Tour Meet at Meridian						Beer Tasting (21+) 687 Pub (Pre Book, Nom. Fee)			Acupuncture Seminar Senses Spa & Salon												
VIBE 14-17 YEARS OLD	Hangin' at Teen Hideout						Youth Activities Open House						Sports Deck Fun			Animation			That's Hilarious			
EDGE 11-14 YEARS OLD	Hangin' at In Da Shade			Teen Hideout Until 4:00 p.m.			Pool Party in Vibe			Open for Tweens			Super Sloppy Science			Sports Deck Fun						
SCUTTLE'S COVE	Caribbean Beach Party			Capture the Flag			Scuttle's Cove Closes at 4:00 p.m.															
OCEANEER LAB 3-12 YEARS OLD	Youth Activities Open House "Anyone Can Cook" 4:00 p.m. - 5:00 p.m.									Open For Secured Activities			Dinner			Piston Cup Challenge						
OCEANEER CLUB 3-12 YEARS OLD							Open For Secured Activities			Magic Playfloor			Tinker Bell's Talent Show			Memory Wall						

Evening	7:00	7:15	7:30	7:45	8:00	8:15	8:30	8:45	9:00	9:15	9:30	9:45	10:00	10:15	10:30	10:45	11:00	11:15	11:30	11:45	12:00			
FUNNEL VISION	Cinderella (G) Funnel Vision						Teen Beach Movie (G) Funnel Vision						Enchanted (PG) Funnel Vision											
BUENA VISTA THEATRE	Iron Man 3  (PG-13) Duration: 2 Hours 10 Minutes						The Lone Ranger (PG-13) Duration: 2 Hours 29 Minutes																	
CHARACTER							Mickey Mouse Dk 4, Balcony	Minnie Mouse Lobby Atrium (V)			LEGO REAL SOON!													
	Captain's Signing Whitecaps						Family Dance Party <7.30 p.m. Evolution			Walt Disney Theatre			Dream Quest D Lounge			Lobby Atrium								
FUN FOR ALL AGES	Officer Pin Trading Lobby Atrium			Disney Trivia D Lounge						Live Music with Midtown Lobby Atrium			Family Fusion D Lounge			Family Superstar Karaoke D Lounge			Balazs Pecs LIVE Lobby Atrium					
ADULTS	90's Music Trivia 687 Pub						DJ Dan Evolution			Dream Quest Evolution			80's Music Challenge Evolution			Pulse feat. Guest DJ Akshen Evolution								
	Live Music with Dreem Quiet Cove						Live Piano with Balazs Pecs District Lounge			Ravon Rhoden LIVE District Lounge			Club 18*21 Farewell Evolution			Ravon Rhoden LIVE District Lounge								
VIBE 14-17 YEARS OLD							Pump It Up			Bring It!						Dance Party								
EDGE 11-14 YEARS OLD							Ghost Voyagers									Farewell Dance Party								
OCEANEER LAB 3-12 YEARS OLD	POTC: Tides of Fortune			Stitch's Final Farewell			Get the Hook			Anyone Can Cook			Super Sloppy Science			Magic Playfloor								
OCEANEER CLUB 3-12 YEARS OLD	Camp Rocking Out!			Magic Playfloor			Little Einstein's Adventure			Animation Antics						Movie Time								

Symbol for activities that will be repeated during the cruise

FOLD

Fold along the dotted lines and take me with you so you don't miss any of the fun!

FOLD

IN THE SPOTLIGHT SERIES

SOUP IT! SERIES

JUMP UP! SERIES

CREATE & INVENT SERIES

OPEN HOUSE

CLUBHOUSE SERIES

STORYBOOK SERIES

Symbol for activities that will be repeated during the cruise



FOLD —

Fold along the dotted lines and take me with you so you don't miss any of the fun!

FOLD —

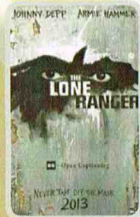
IN THE SPOTLIGHT SERIES  
SOLVE IT! SERIES  
JUMP UP! SERIES  
CREATE & INVENT SERIES  
OPEN HOUSE  
CLUBHOUSE SERIES  
STORYBOOK SERIES

SATURDAY, AUGUST 3, 2013 - DISNEY'S CASTAWAY CAY

# BUENA VISTA THEATRE

CC - Open Captioning

DOLBY 3D



8:30 a.m.  
Duration:  
2 hrs 29 mins  
Rating: PG-13



11:30 a.m.  
Duration:  
1 hr 43 mins  
Rating: G



2:00 p.m. & 10:30 p.m.  
Duration:  
2 hrs 29 mins  
Rating: PG-13



5:15 p.m. & 7:45 p.m.  
Duration:  
2 hrs 10 mins  
Rating: PG-13

## Character Appearances

### DONALD DUCK

Gangway  
8:45 a.m. & 9:45 a.m.  
Preludes - 5:30 p.m.

### CAPTAIN HOOK & MR SMEE

Post Office, Disney's Castaway Cay  
9:00 a.m. & 10:00 a.m.  
Gangway - 3:30 p.m.

### TINKER BELL

Lobby Atrium (V) - 9:00 a.m.

### PLUTO

Mt. Rustmore, Disney's Castaway Cay  
9:15 a.m.  
Scuttle's Cove, Disney's Castaway Cay  
10:15 a.m.  
Lobby Atrium (V) - 5:30 p.m.

### MICKEY MOUSE

Scuttle's Cove, Disney's Castaway Cay  
9:15 a.m.  
Mt. Rustmore, Disney's Castaway Cay  
10:15 a.m.  
Deck 4, Balcony  
4:45 p.m. & 7:30 p.m.

### CAPTAIN JACK SPARROW

Island Pathway, Disney's Castaway Cay  
9:30 a.m.  
Pelican Point Tram Stop -  
10:45 a.m.

### CHIP & DALE

Post Office, Disney's Castaway Cay  
9:30 a.m. & 10:30 a.m.  
Deck 4, Balcony - 5:45 p.m.

### DAISY DUCK

Gangway  
9:30 a.m. & 10:30 a.m.  
Preludes - 5:00 p.m.

### GOOFY

Mt. Rustmore, Disney's Castaway Cay  
9:45 a.m.  
Scuttle's Cove, Disney's Castaway Cay  
10:45 a.m.  
Lobby Atrium (V) - 5:00 p.m.

### MINNIE MOUSE

Scuttle's Cove, Disney's Castaway Cay  
9:45 a.m.  
Mt. Rustmore, Disney's Castaway Cay  
10:45 a.m.  
Lobby Atrium (V) - 7:30 p.m.

### STITCH

Gangway - 10:15 a.m. & 3:00 p.m.

### DANCE PARTY

Island Gazebo 1, Disney's Castaway Cay  
12:15 p.m.

### PRINCESS MINNIE

Deck 4, Balcony - 4:00 p.m.

### DISNEY PRINCESSES

D Lounge - 7:30 p.m.

### SEA YA REAL SOON

Lobby Atrium - 10:15 p.m.

(H) Hallway - (S) Starboard Side - (P) Port Side - (V) Vestibule  
For details of daily Disney character appearances, refer to the character line on your Navigator Grid, or the digital character board in the Lobby Atrium.

## YOUTH ACTIVITIES THEMED EXPERIENCES

### CLUBHOUSE SERIES

focuses on movement and features content which appeals to younger children.

### STORYBOOK SERIES

is designed with a strong connection to the Disney classic stories.

### JUMP UP! SERIES

includes large group games & movement-oriented activities.

### CREATE & INVENT SERIES

will have a tactile focus allowing children to create and admire their work.

### IN THE SPOTLIGHT SERIES

focuses on children's stage presence with lots of activities and enthusiasm.

### SOLVE IT! SERIES

are less active, but will challenge children with problem/solutions-based activities.

### OPEN HOUSE

activities for families, adults and children of all ages to enjoy together.

## SHIP DIRECTORY

### YOUTH ACTIVITIES

DISNEY'S OCEANEER CLUB	DECK 5, MID	4:00 PM - 12:00 MID
DISNEY'S OCEANEER LAB	DECK 5, MID	5:00 PM - 12:00 MID
EDGE	DECK 13, MID	4:00 PM - 12:00 MID
SCUTTLE'S COVE	CASTAWAY CAY	9:00 AM - 4:00 PM
VIBE	DECK 4, FWD	5:00 PM - 1:00 AM
IT'S A SMALL WORLD NURSERY	DECK 5, MID	9:00 AM - 12:00 MID

### RECREATION

AQUADUCK	DECK 12, MID	9:00 AM - 11:00 PM
DONALD'S POOL	DECK 11, MID	6:00 AM - 12:00 MID
GOLF/SPORTS SIMULATORS	DECK 13, AFT	1:00 PM - 6:00 PM
GOOFY GOLF	DECK 13, AFT	8:00 AM - 10:00 PM
GOOFY'S SPORTS DECK	DECK 13, AFT	12:00 MID - 6:00 PM
MARGE'S BARGES	CASTAWAY CAY	9:00 AM - 3:30 PM
MICKEY'S POOL	DECK 11, MID	6:00 AM - 12:00 MID
MICKEY'S SLIDE	DECK 11, MID	10:00 AM - 6:00 PM
MIDSHIP DETECTIVE AGENCY	DECK 5, MID	8:00 AM - 11:00 PM
NEMO'S REEF	DECK 11, MID	10:00 AM - 7:00 PM
PORT ADVENTURES DESK	DECK 5, MID	
QUIET COVE POOL	DECK 11, FWD	6:00 AM - 12:00 MID
SENSES FITNESS CENTER	DECK 11, FWD	6:00 AM - 10:00 PM

### GENERAL INFORMATION

ARR-CADE	DECK 11, AFT	24 HOURS
BUENA VISTA THEATRE	DECK 4 & 5, MID	SHOWTIMES
DISNEY VACATION CLUB	DECK 4, MID	6:00 PM - 10:00 PM
FUTURE CRUISE SALES DESK	DECK 4, MID	8:00 AM - 10:00 AM 3:00 PM - 10:30 PM
GUEST SERVICES	DECK 3, MID	24 HOURS
HAIRBRAIDING	DECK 11, MID	5:30 PM - 9:30 PM
MEDICAL HEALTH CENTER	DECK 1, FWD	9:30 AM - 11:00 AM 4:30 PM - 7:00 PM
PRELUDES	DECK 3, FWD	5:45 PM - 6:30 PM 8:00 PM - 8:45 PM
SENSES SPA AND SALON	DECK 11, FWD	8:00 AM - 10:00 PM
SHUTTERS PHOTO GALLERY	DECK 4, MID	5:00 PM - 11:00 PM
WALT DISNEY THEATRE	DECK 3 & 4, FWD	SHOWTIMES

### SHOPPING

MICKEY'S MAINSAIL	DECK 3, FWD	5:30 PM - 11:30 PM
SEA TREASURES	DECK 3, FWD	5:30 PM - 11:30 PM
VISTA GALLERY	DECK 4, MID	6:00 PM - 11:00 PM
WHITECAPS	DECK 3, FWD	5:30 PM - 11:30 PM
WHOZITS & WHATZITS	DECK 11, MID	6:45 PM - 10:00 PM

DUE TO PORT REGULATIONS, WHEN THE SHIP IS DOCKED, THE STORES MUST REMAIN CLOSED.



### PRINCESS GATHERING

Don't miss your chance to see this Royal gathering today in the Lobby Atrium.

3:30 p.m.

<b>DINNER MENU</b>	Animator's Palate: Pacific Rim Cuisine Enchanted Garden: Continental Market Cuisine Royal Palace: French Dinner Dining Times: 5:45 p.m. & 8:15 p.m.	<b>DRINK OF THE DAY</b> Bahama Mama (Alcoholic) Coco Bali (Non Alcoholic)	<b>WEATHER FORECAST</b> Saturday: Partly Sunny High: 80°F/27°C Sunday: Sunny High: 82°F/28°C
	<b>Evening Attire: Optional Dress Up</b>		

## DINING & LOUNGES

### BREAKFAST

CABANAS CONTINENTAL	DECK 11, AFT	7:00 AM - 7:30 AM
CABANAS	DECK 11, AFT	7:30 AM - 10:45 AM
ENCHANTED GARDEN	DECK 2, MID	8:00 AM - 10:30 AM
ROYAL PALACE	DECK 3, MID	8:00 AM - 9:30 AM

### LUNCH

CABANAS	DECK 11, AFT	12:00 PM - 1:30 PM
COOKIES	CASTAWAY CAY	11:30 AM - 2:00 PM
COOKIES TOO	CASTAWAY CAY	11:30 AM - 2:00 PM
FILLMORE'S FAVORITES	DECK 11, MID	11:00 AM - 6:00 PM
LUIGI'S PIZZA	DECK 11, MID	11:00 AM - 6:00 PM
TOW MATER'S GRILL	DECK 11, MID	11:00 AM - 6:00 PM

### DINNER

ANIMATOR'S PALATE	DECK 3, AFT	5:45 PM & 8:15 PM
ENCHANTED GARDEN	DECK 2, MID	5:45 PM & 8:15 PM
ROYAL PALACE	DECK 3, MID	5:45 PM & 8:15 PM
PALO & REMY (18+)	DECK 12, AFT	6:00 PM - 9:00 PM

(RESERVATIONS REQUIRED & COVER CHARGE APPLICABLE, DIAL #7-9734)

TOW MATER'S GRILL	DECK 11, MID	6:00 P.M. - 11:00 PM
-------------------	--------------	----------------------

### LATE NIGHT SNACKS

LUIGI'S PIZZARIA	DECK 11, MID	9:30 PM - 12:00 MID
------------------	--------------	---------------------

### ADDED FEATURES

BEVERAGE STATION	DECK 11, MID	24 HOURS
EYE SCREAM	DECK 11, MID	11:00 AM - 12:00 MID
ROOM SERVICE	DIAL 0	CLOSES AT 1:30 AM

### ENTERTAINMENT - LOUNGES - BARS

Adults must be 21 and older to consume alcoholic beverages.

687 PUB	DECK 4, AFT	4:30 PM - 9:00 PM
687 PUB (18+)	DECK 4, AFT	9:00 PM - 12:00 MID
BON VOYAGE	DECK 3, MID	3:00 PM - 11:00 PM
COVE BAR (18+)	DECK 11, FWD	11:00 AM - 11:00 PM
COVE CAFE (18+)	DECK 11, FWD	7:00 AM - 12:00 MID
CURRENTS (18+)	DECK 13, FWD	2:00 PM - 12:00 MID
D LOUNGE	DECK 4, MID	SHOWTIMES
DISTRICT LOUNGE	DECK 4, AFT	4:30 PM - 9:00 PM
DISTRICT LOUNGE (18+)	DECK 4, AFT	9:00 PM - 12:00 MID
EVOLUTION (18+)	DECK 4, AFT	9:30 PM - 2:00 AM
FROZONE TREATS	DECK 11, MID	11:00 AM - 11:00 PM
MERIDIAN (18+)	DECK 12, AFT	5:00 PM - 12:00 MID
OUTLOOK	DECK 14, MID	
PINK (18+)	DECK 4, AFT	5:00 PM - 12:00 MID
SKYLINE (18+)	DECK 4, AFT	5:00 PM - 1:00 AM
VISTA CAFE	DECK 4, MID	7:30 AM - 11:00 PM
WAVES	DECK 12, AFT	2:00 PM - 9:00 PM

### CASTAWAY CAY BARS

CONCHED OUT BAR	CASTAWAY CAY	9:00 AM - 4:00 PM
CASTAWAY AIR BAR	CASTAWAY CAY	9:00 AM - 3:30 PM
HEADS UP BAR	CASTAWAY CAY	9:00 AM - 3:30 PM
SAND BAR	CASTAWAY CAY	9:00 AM - 4:00 PM

Consumers who order raw or partially cooked, ready-to-eat food of animal origin, are hereby informed that the food is not sufficiently cooked to ensure its safety.

### IMPORTANT NUMBERS

Fire/Security:	7-3001
Medical EMERGENCY:	7-3000
Health Center:	7-1923

All Ashore:  
Approx. 8:30 a.m.

All Aboard:  
5:00 p.m.

# Disney's Castaway CAY

Disney CRUISE LINE



## ATTRACTIONS

- A** Arrival Plaza
- B** Post Office  
Castaway Cay Postmark
- C** Marge's Barges & Sea Charters Dock  
Parasailing, Fishing Charters & More
- D** Boating Harbor
- E** Scuttle's Cove  
Children's Program Areas
- F** Boat Beach  
Watercraft Rental
- G** Monstro Point  
Whale Dig Site
- H** Castaway Ray's Stingray Adventure
- I** Gil's Fins and Boats  
Snorkel, Tube & Float Rentals
- J** Gazebos (2)

- K** Castaway Family Beaches (2)
- L** Snorkeling Lagoon
- M** Swimming Lagoon
- N** In-Da-Shade Games  
Basketball, Billiards, Ping-Pong & More
- O** Flippers and Floats  
Snorkel, Tube & Float Rentals
- P** Pelican Plunge  
Water Slide
- Q** Hideout  
Teens Only
- R** Bike Rentals
- S** Beach Sports  
Tetherball, Volleyball, Soccer
- T** Spring-A-Leak  
Wet Play Area
- U** Beach Cabanas 1-17
- V** The Windsock Hut  
Float Rentals for Adult Beach

- W** Massage Cabanas
- X** Serenity Bay  
Exclusive Beach Area for Adults  
18 Years & Older
- Y** Beach Cabanas 18-21
- Z** Observation Tower

## FOOD AND BEVERAGE

- 1** Pop's Props and Boat Repair  
Covered Seating
- 2** Dig In  
Covered Seating
- 3** Cookie's BBQ
- 4** Conched Out Bar  
Frozen Specialty Drinks, Cocktails & Beer
- 5** Outdoor Seating (3)

- 6** Gumbo Limbo  
Covered Seating
- 7** Heads Up Bar  
Frozen Specialty Drinks, Cocktails & Beer
- 8** Grouper  
Covered Seating
- 9** Sand Bar  
Frozen Specialty Drinks, Cocktails & Beer
- 10** Cookie's Too BBQ
- 11** Castaway Air Bar  
Frozen Specialty Drinks, Cocktails & Beer

## MERCHANDISE

- 12** She Sells Sea Shells  
and Everything Else  
Castaway Cay Logo Merchandise
- 14** Buy the Seashore  
Castaway Cay Logo Merchandise

- 15** Bahamian Retail  
Bahamian Arts & Crafts

## THIS AND THAT

- 16** Kargo Handling Tram Stop
- 17** Scuttle's Cove Tram Stop
- 18** Pelican Point Tram Stop
- 19** Serenity Bay Tram Stop
- +** First Aid
- ⚓** Restrooms & Outdoor Showers
- 📷** Fun Photo Opportunities
- 🚲** Bike/Nature Trail