



## Welcome, ghoulish Passholders, to our haunted issue...there's no turning back now!

Dearest Passholder,

On the cover, you see some of our infamous villains as they might have appeared in their corruptible mortal state inside **Haunted Mansion®**. (By the way, was that room actually stretching?)

Of course, the cover is just one of our little Halloween tricks. We've got more tricks up our sleeve in this issue, but mostly you'll find lots of treats—because we want you to take advantage of your Passholder admissions, perks and privileges to their very fullest.

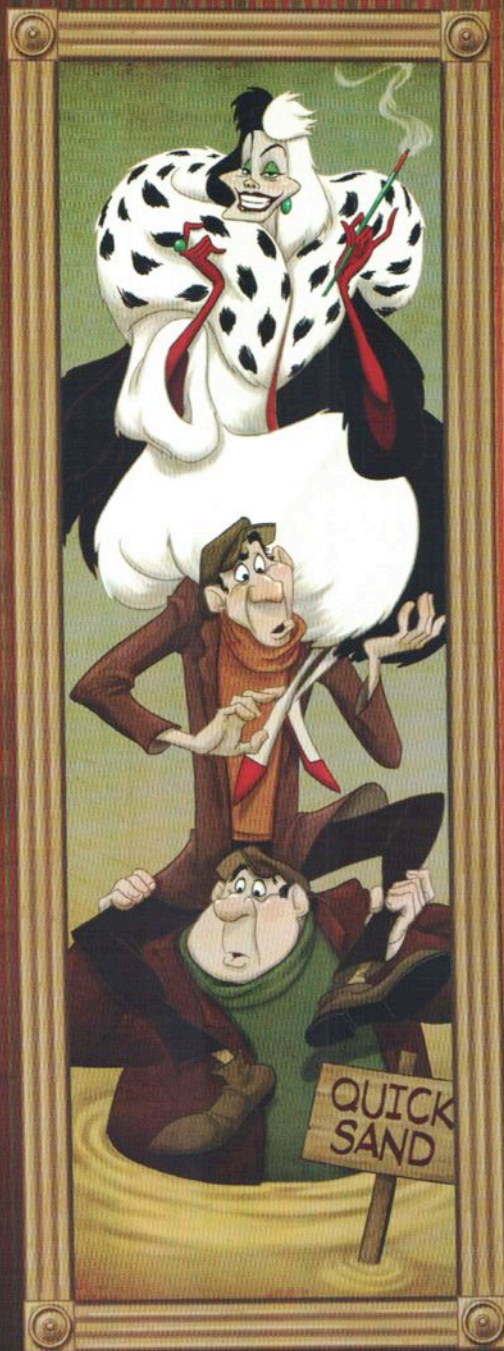
Now read on...and hurry ba-ack...hurry baaa-ack...

Chillingly yours,

Your best fiends forever at **Walt Disney World®** Passholder Programs









LIMITED TIME MAGIC PRESENTS A **DISNEY'S HOLLYWOOD STUDIOS®** SPECIAL EVENT

# "UNLEASH THE VILLAINS!!"



*THIS SEPTEMBER ON FRIDAY THE 13TH  
ONE NIGHT ONLY FOR 5 CHILLING HOURS FROM 8 p.m. - 1 a.m.*

SCREAM WITH DELIGHT ON SOME OF YOUR FAVORITE **DISNEY'S HOLLYWOOD STUDIOS®** ATTRACTIONS! **SHAKE** THE HANDS OF SELECT SNEAKY VILLAINS! **SHUDDER** WHEN THE VILLAINS GET DOWN AND BOOGIE!

**WARNING:** COLLECTIBLE MERCHANDISE AT THIS EVENT MAY BE TOO COMPELLING TO RESIST!

PRODUCED AND DIRECTED BY **LIMITED TIME MAGIC.**  
VISIT **LIMITEDTIMEMAGIC.COM** FOR WEEKLY SURPRISES, IF YOU DARE.

*Just keep telling yourself...it's just a whimsical event...*

THEME PARK ADMISSION OR VALID PASSHOLDER ID REQUIRED. SUBJECT TO CAPACITY RESTRICTIONS. ENTERTAINMENT AND EVENT SUBJECT TO CHANGE WITHOUT NOTICE.





## Indulge your sweet tooth (or fangs)

with unique Halloween-themed delights.

You may not know that many of the scrumptious snacks you enjoy at **Walt Disney World®** Resort are crafted on site in our own candy kitchens. To celebrate one of our frightfully favorite times of the year, all manner of specialty offerings are gussied up for this ghoulish season.

What's this? It's an eerie Jack Skellington caramel apple! And over there—some scrumptious pumpkin fudge! Mmmm...ghost marshmallows. Look for Disney Character goodies like a Mickey pumpkin treat and Minnie witch hat cookies. And no matter what time of year it is, there's always time to stop by Karamell-Küche in the Germany Pavilion at **Epcot®** for the drizzled popcorn, dipped strawberries, and the chocolate and caramel pretzels. Or just take in a deep, blissful breath of the delicious caramel goodness!

We've got treats for tricksters of all ages, from gourmet apples to chocolate-covered pineapple skewers. In short, we have what it takes to make your taste buds happy and yearning for more.

So, go ahead—scare up some delicious fun. Passholder discounts apply in select shops, including Main Street Confectionery in **Magic Kingdom®** Park, Beverly Sunset Sweet Spells in **Disney's Hollywood Studios®**, Goofy's Candy Co. at **Downtown Disney®** and Island Mercantile in **Disney's Animal Kingdom®** Theme Park.





## Scare up your tickets early for *Mickey's Not-So-Scary Halloween Party!*

On select nights from September 10 through November 1, a special party is materializing that you won't want to miss. These events are bursting with **Happy HalloWishes** fireworks, **Mickey's "Boo-To-You" Halloween Parade**, Disney Characters in costume, dastardly villains, abundant trick-or-treating, lively entertainment and select **Magic Kingdom®** attractions.

### New stuff and nice savings

Experience the Celebrate the Magic castle projection show with a special new segment, in which the sneakiest and most infamous Disney villains do their best to bring their creepiness to the towers and turrets. And don't forget to put on that great Halloween costume you've been looking forward to wearing. Be somebody, be almost anybody, 'cause Mickey and his friends can't wait to see who you'll be this year!

Here's the trick of saving on tickets: Visit [disneyworld.com/passholder](http://disneyworld.com/passholder) and get advance-purchase ticket discounts that'll give you chills of contentment.

### It's the talk of the tomb!

When all the creepies, ghoulies and ghosties come out to socialize, you never know what you might overhear during **Mickey's Not-So-Scary Halloween Party...**

*'Gotta dance! Gotta tap! Gotta scrape my shovel!'*

– Haunted Mansion® gravedigger

*'I just think the Happy HalloWishes fireworks are a little too...happy.'*

– Jafar

*'Does this dress make me look dead?'*

– Haunted Mansion waltzing lady





Select nights **September 10-November 1, 2013, from 7 p.m. to midnight**

**Passholder Discounted Nights:**

**September 10, 13, 17, 20, 24 & 27**

Advance-purchase tickets: \$56, plus tax (\$51, plus tax, ages 3-9)

**September 29; October 3, 6, 10, 14, 17, 20, 22 & 24**

Advance-purchase tickets: \$58, plus tax (\$53, plus tax, ages 3-9)

To purchase tickets, call 407-566-PASS (7277) or visit [disneyworld.com/passholder](http://disneyworld.com/passholder).

**Please Note:** Passholder discounted advance-purchase price is not available on October 4, 11, 18, 25, 27, 29, 31 and November 1.

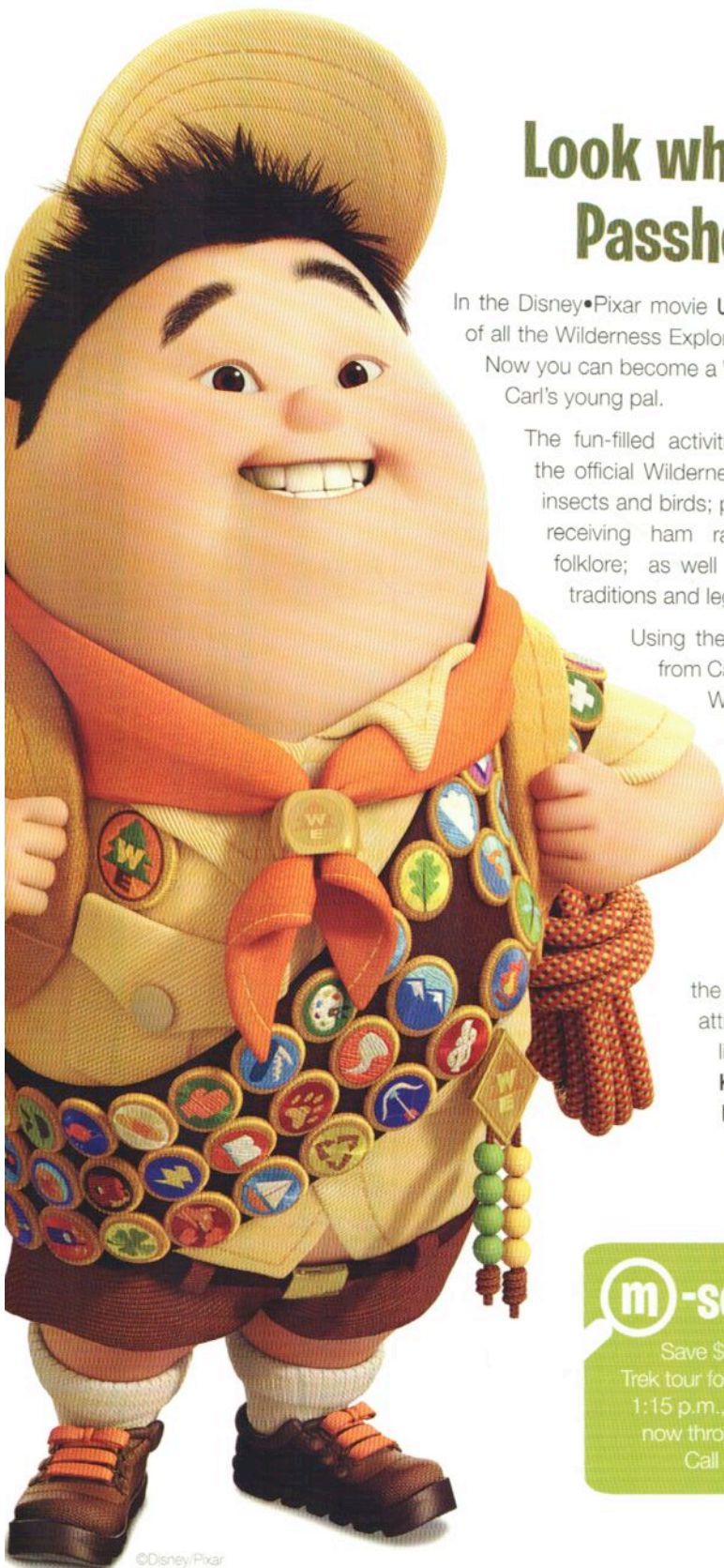
Valid ID required to receive Passholder discount. Entertainment offerings subject to change without notice. For safety, please choose costumes that are not obstructive or offensive. Admission to this event requires a separately priced ticket valid only during specific event dates and hours.



## Passholder Exclusive!

This exclusive Passholder pin is a great way to commemorate the event. Available at the Trading Post in **Magic Kingdom® Park**. Don't forget to use your merchandise discount!





## Look what's "UP," Passholders!

In the Disney•Pixar movie **UP**, Russell was very proud of all the Wilderness Explorers badges he had earned. Now you can become a Wilderness Explorer just like Carl's young pal.

The fun-filled activities include learning to do the official Wilderness call; identifying animals, insects and birds; playing musical instruments; receiving ham radio messages; exploring folklore; as well as learning about cultures, traditions and legends.

Using the handbook and assistance from Cast Members and uniformed Wilderness Explorer Troop Leaders, you can earn over 30 badges involving tasks and activities around the Park. Complete and present your handbook and receive a completion badge sticker!

All of this in addition to all the **Disney's Animal Kingdom®** attractions and entertainment, like **Expedition Everest®**, **Kilimanjaro Safaris®**, **Kali River Rapids®** and **Finding Nemo—The Musical**, all included with your Pass.

### **m**-secret

Save \$50 on the Wild Africa  
Trek tour for 11:45 a.m., 12:30 p.m.,  
1:15 p.m., 2:30 p.m. or 3:15 p.m.,  
now through October 26, 2013.  
Call 407-WDW-TOUR.



# Let's play Passholder Whatzits!

Can you guess "whatzit" at the Downtown Disney® Area?



This whimsical windmill can be seen high above  
A world of cool playthings and stuff that kids love.



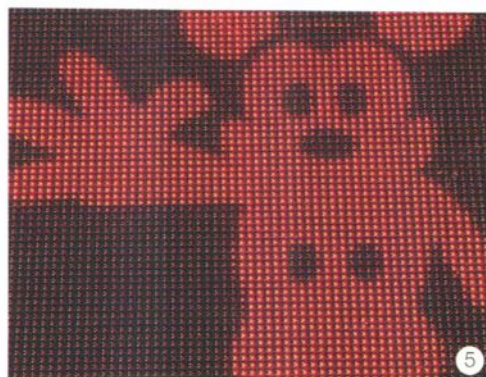
They fly through the air with the greatest of ease.  
It's Woody and Buzz, made from thousands of these!



The great poet Kavanagh wrote of a road  
Over 3,000 miles from this statue's abode.



Inside are five floors of all things interactive.  
Outside there's a sign that we think is attractive.



Mickey knows safety is part of the fun  
Two "walk/don't walk" neons are better than one.



Amid the great dining, the concerts and food  
A musical king has been crafted in wood.



# Passholder benefits are fall windfalls!

Let's take a peek at a few of your many perks and benefits.  
Of course, you can find them all at [disneyworld.com/passholder](http://disneyworld.com/passholder).

## Feast on these tasty savings

Get Passholder discounts on regularly priced food and nonalcoholic beverages at select **Walt Disney World®** restaurants during select meal times. Try Tutto Italia Ristorante in the Italy Pavilion at **Epcot®**. Grab a bite at Hollywood & Vine, the "Cafeteria to the Stars," in **Disney's Hollywood Studios®**. And more!

Your discounts vary by location and meal time. Visit [disneyworld.com/passholder](http://disneyworld.com/passholder) to be sure where and when discounts are offered. Reservations may be required, so call **407-WDW-DINE (939-3463)**. Block-out dates may apply.



## Mini golf, maxi fun, moolah saved!

As a Passholder, you get 50% off for you and three Guests at both **Walt Disney World** miniature golf courses. Encounter sandcastles, a melting snowman and hockey sticks at **Disney's Winter Summerland** Miniature Golf Course. But shhhhh—make sure you don't wake a slumbering Santa buried in the sand. Or spot familiar mushroom friends, tutu-clad hippos and other iconic scenes from Walt Disney Pictures' **Fantasia** at **Disney's Fantasia Gardens** Miniature Golf Course.

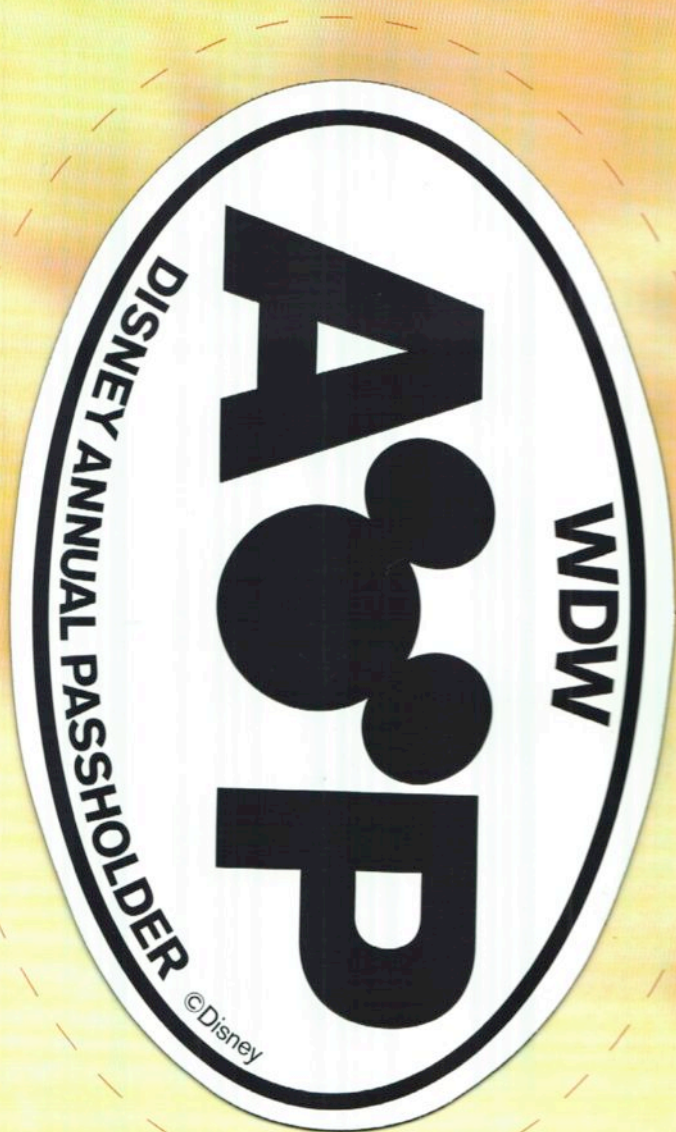




## Here's an attractive instant perk!

Because we're so fond of your magnetic friendship, we've attached a special Passholder magnet for your car, refrigerator, amphibious landing craft—pretty much any space where it can be stuck and enjoyed.

We cannot thank you enough for "sticking with" our Passholder family.







## Hear ye, hear ye!

Princess Fairytale Hall approaches! (Or is it "approacheth"?)

The **Magic Kingdom**® enchantment just keeps on coming! You've got **New Fantasyland**™ to enjoy this summer. Then this fall, Princess Fairytale Hall opens! "It's an annex to Cinderella Castle where our Guests will come to meet Disney Princesses," said **Jason Grandt, Walt Disney Imagineering**. Cinderella and Rapunzel will be there, along with other visiting princesses.

"Princess Fairytale Hall will be in the same regal style as Cinderella Castle, a meticulously detailed environment befitting Disney royalty."

You'll pass through lush purple and gold trimmings to enter a castle foyer adorned with stained-glass windows with images from the Disney animated feature **Cinderella**. Then you'll enter an airy, high-ceilinged Royal Gallery.

"The space is really opulent and filled with ornate chandeliers and several framed custom princess portraits that are stunning. They were painted by talented Disney artists who diligently labored to capture the atmosphere, design and story moments of the films," stated Jason.

"Next to meeting Mickey, the friends that our Guests most wish to meet are Disney Princesses," added Jason. "Our goal is always to make those fantasy worlds become a reality. I loved crafting such a magical place to fulfill their dreams. It will take your breath away."

"Disney Princesses are truly the heart of **Fantasyland**®. Now they have Princess Fairytale Hall, a special place in which they can share their magic with all their dearest friends."





Michael W. Smith



Steven Curtis Chapman

## Don't miss this year's Night of Joy lineup

Christian music superstars **Michael W. Smith** and **Steven Curtis Chapman** will perform on the same stage when they and other top contemporary Christian musicians bring the 31st **Night of Joy** live music event to **Magic Kingdom® Park**, Friday and Saturday, **September 6 and 7, 2013**. That Friday night, Michael and Steven will each perform a 30-minute set and a few songs together, too.

"To be able to sing about truth and hope to people who are going through the day-to-day challenges of life," Michael told us. "To be able to sing these songs in front of Cinderella Castle... I never dreamed that it would happen."

From hard rockers like **Skillet** to hot rappers like **TobyMac**, there will be unforgettable performances for almost every kind of music fan, plus access to select **Magic Kingdom** Park attractions throughout the evening.

Inspirational songs take on new meaning with every performance. "One night I was trying to get my young daughters, Maria and Stevey Joy, to settle down at bedtime," Steven recalled. "I was getting frustrated at them. But we need to savor fleeting childhood moments. So I wrote a song called 'Cinderella.' The more I sang it, the more it became part of me." (It's on Steven's album **This Moment: Cinderella Edition**.)

So when you attend the **Night of Joy** performances, you'll be living those moments along with the artists. "It's a great experience," added Michael, whose latest album is the spectacular **Glorious**. "If I could just describe it in a few words, I'd say it's a night of hope."

There are special ticket savings if you attend both nights and also savings on advance purchase tickets at [nightofjoy.com](http://nightofjoy.com). Follow the excitement on Facebook at [facebook.com/NightofJoy](http://facebook.com/NightofJoy).

## Night of Joy 2013 Artists

Performing 7:30 p.m. to 1 a.m. at **Magic Kingdom Park**

Friday, Sept. 6

SKILLET  
MERCYME  
MICHAEL W. SMITH  
STEVEN CURTIS CHAPMAN  
AUDIO ADRENALINE  
MANDISA  
FOR KING & COUNTRY  
MORIAH PETERS  
WE AS HUMAN  
CITY HARBOR

Saturday, Sept. 7

NEWSBOYS  
TOBYMAC  
FRANCESCA BATTISTELLI  
BUILDING 429  
GROUP 1 CREW  
MATTHEW WEST  
PLUMB  
JAMIE GRACE

Visit [nightofjoy.com](http://nightofjoy.com) for more info. Save \$10 on advance purchase tickets now! \$55 per night, plus tax. Or save even more and purchase a 2-night ticket for \$99, plus tax.

Entertainment subject to change without notice.





## New tastes, new stars and a new marketplace!

Look for all this and more at the **Epcot®** International Food & Wine Festival

270 top chefs with food and beverages from six continents, renowned experts and 19 bands are the recipe for the 18th Annual **Epcot®** International Food & Wine Festival, September 27 to November 11, 2013, featuring new dishes, new performers and a brand-new marketplace.

"It's never the same festival twice," said **Michael Jenner, Disney Parks Event Content Development Operations Manager**. "We try to keep favorites—like Canadian cheddar cheese soup—but we introduce thrilling new tastes as well."

**Epcot®** International Food & Wine Festival: September 27 to November 11, 2013

More information can be found at [epcotfoodfestival.com](http://epcotfoodfestival.com) or by calling 407-WDW-FEST (939-3378).

Passholders can get tickets early for special festival events and happenings! Early booking begins August 9 at 8 a.m., before the general public on August 13.



Scottish officials were so impressed with Disney•Pixar **Brave**, they were delighted to add a Scotland Marketplace, offering special premium dishes as well as beers, meads and scotch.

Six new legendary pop bands will be performing at the nightly Eat to the Beat Concert Series: the **Go-Go's** (Sept. 30–Oct. 1), **Edwin McCain** (Oct. 10–11), **The Manhattan Transfer** (Oct. 12–13), **Wilson Phillips** (Oct. 14–15), **Spin Doctors** (Oct. 31–Nov. 1) and **Christopher Cross** (Nov. 2–3).

Some returning Guest favorites include the Brazil Marketplace (after a one-year absence) and the Ocean Spray Cranberry Bog (returning for its third year).

"There is so much going on—from the phenomenal concerts to fantastic culinary demonstrations and wine seminars to over 25 ethnic marketplaces filled with tasty treats," said Michael. "Some Guests actually come for all 46 days of the event."

## Make the most of the festival

Tips to make your visit even more enjoyable:

- PICK UP A FESTIVAL GUIDE TO HELP YOU PLAN YOUR DAY
- PICK UP A PASSPORT SO YOU DON'T MISS A TASTE
- NAVIGATE THE FESTIVAL WITH THE MOBILE SITE [EPCOTFOODFESTIVAL.COM](http://EPCOTFOODFESTIVAL.COM)
- PURCHASE A DISNEY GIFT CARD BEFORE EATING AROUND THE WORLD
- CHECK OUT THE FESTIVAL CENTER FOR ADDITIONAL EVENTS AND EXCLUSIVE MERCHANDISE
- RESERVE YOUR PARTY FOR THE SENSES SEAT RIGHT AWAY

## You can add extra taste to the fun!



Epcot® International Food & Wine Festival  
Disney Gift Card



Exclusive Pin

Purchasing a Disney Gift Card adds convenience and fun to the festival. Just load it up, wear it on your wrist and savor the magic. Plus, what festival would be complete without purchasing your Passholder pin?





# Scotland Marketplace Banoffee Pie

A recipe from the **Epcot**® International Food & Wine Festival

Makes 9-inch pie

- 1 stick unsalted butter
- 1/2 cup packed dark brown sugar
- 1 (14-ounce) can sweetened condensed milk
- Favorite pre-made 9-inch chocolate cookie crust
- 2 to 3 bananas
- 1 1/2 cups heavy cream
- 2 teaspoons sugar

- 1) Melt butter in a small saucepan over medium heat. Add brown sugar and stir until melted and combined. Add condensed milk and bring mixture to a simmer for a few minutes, stirring continuously. The mixture should darken and thicken slightly.
- 2) Pour filling into crust. Cool to room temperature and refrigerate for at least 1 hour until filling is firm.
- 3) Slice bananas and place on top of filling in a single layer, covering filling completely.
- 4) Whip cream with sugar until medium peaks form. Spread whipped cream on top of bananas.

**What to drink with it:** Sip a perfumed, light Italian Moscato d'Asti.





# PASSHOLDERS!

ENJOY WEEKEND RATES THAT ROCK AT  
SELECT *DISNEY RESORT* HOTELS IN EARLY FALL!

For example, *Disney's All-Star Music Resort* starts at just \$83 per night, plus tax, in a standard room, for stays most nights now through 9/13/13.

Check for great rates at other select Resort hotels! Book now through 9/13/13.

Visit [disneyworld.com/Passholder](http://disneyworld.com/Passholder) or call 407-566-PASS (7277).

## WALT Disney World

The number of rooms available at this rate is limited. Length-of-stay requirements may apply. Savings based on the non-discounted price of the same room. Additional per-adult charges may apply if more than 2 adults per room. No group rates or other discounts apply. Advance reservations required. Passholder must present his or her valid adult Pass at check-in. Offer excludes suites and 3-bedrooms. Offer not valid for campsites and Disney's Art of Animation Resort—The Little Mermaid Standard Rooms.



# PASSHOLDER Calendar



## NIGHT OF JOY

Magic Kingdom® Park

September 6 & 7

Enjoy one or both extraordinary nights of live Christian music and Disney fun. Passholders can save up to \$10 on advance purchase tickets. Order yours now.

[nightofjoy.com](http://nightofjoy.com)



## UNLEASH THE VILLAINS

Disney's Hollywood Studios®

September 13

Maleficent, Captain Hook, Jafar and other Disney villains are hosting an evil dance party, open until the 13th Hour (1 a.m.). Get ready for nighttime mischief and limited-edition collectibles.

[limitedtimemagic.com](http://limitedtimemagic.com)

## EAT TO THE BEAT CONCERT SERIES

Epcot® America Gardens Theatre • 5:30, 6:45 and 8 p.m.

September 27–November 11

- |                 |   |
|-----------------|---|
| Sept. 27–29     | STARSHIP starring MICKEY THOMAS         |
| Sept. 30–Oct. 1 | <b>NEW!</b> GO-GO'S                     |
| Oct. 2–4        | AIR SUPPLY                              |
| Oct. 5–6        | SISTER HAZEL                            |
| Oct. 7–9        | SUGAR RAY                               |
| Oct. 10–11      | <b>NEW!</b> EDWIN MCCAIN                |
| Oct. 12–13      | <b>NEW!</b> THE MANHATTAN TRANSFER      |
| Oct. 14–15      | <b>NEW!</b> WILSON PHILLIPS             |
| Oct. 16–17      | THE POINTER SISTERS                     |
| Oct. 18–20      | NIGHT RANGER                            |
| Oct. 21–23      | BOYZ II MEN                             |
| Oct. 24–25      | SURVIVOR                                |
| Oct. 26–27      | 38 SPECIAL                              |
| Oct. 28–30      | SMASH MOUTH                             |
| Oct. 31–Nov. 1  | <b>NEW!</b> SPIN DOCTORS                |
| Nov. 2–3        | <b>NEW!</b> CHRISTOPHER CROSS           |
| Nov. 4–5        | HANSON                                  |
| Nov. 6–8        | Dennis DeYoung, original member of STYX |
| Nov. 9–11       | BIG BAD VODOO DADDY                     |

Entertainment subject to change  
[epcotfoodfestival.com](http://epcotfoodfestival.com)



## REFLECTION OF EVIL

Disney's Hollywood Studios®

September 28

Join us from 10 a.m.–1 p.m. and 2–5 p.m. at Animation Gallery inside Disney's Hollywood Studios®, for the release of the Reflection of Evil cel featuring the Evil Queen.

[ArtofDisneyParks.com](http://ArtofDisneyParks.com)





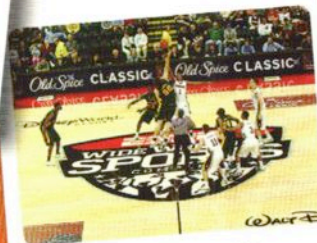
### EPCOT® INTERNATIONAL FOOD & WINE FESTIVAL

Epcot®

September 27–November 11

Take your taste buds for a ride around the world, sample from more than 25 international marketplaces and enjoy culinary demonstrations of all kinds.

[epcotfoodfestival.com](http://epcotfoodfestival.com)



### OLD SPICE® CLASSIC

ESPN Wide World of Sports Complex

November 28–December 1

The eight-team field for this annual men's college basketball tournament features Butler, LSU, Memphis, Oklahoma State, Purdue, Saint Joseph's, Siena and Washington State.

Passholders get 50% off tickets.  
Just use offer code **passholder**  
at [ticketmaster.com](http://ticketmaster.com).



### 38TH ANNUAL FESTIVAL OF THE MASTERS

Presented by Michaels®

Downtown Disney® Area

November 8–10

Join nearly 150 award-winning artists as they gather for this world-renowned festival for art lovers.

[disneyworld.com/art](http://disneyworld.com/art)



Passholder Benefits

## Spotlight

### TABLES IN WONDERLAND

Save \$25 on a Tables in Wonderland membership. Benefits include 20% discount on food and beverages at participating Walt Disney World® restaurants, plus much more. Call 407-566-5858.

### DISNEY WATER PARKS

Receive a \$4 discount off the regular admission price for Passholders and Guests ages 10 & up and a \$3 discount for Passholders and Guests ages 3–9 at Disney's Typhoon Lagoon and Disney's Blizzard Beach Water Parks. Discount available for the Passholder and up to three (3) Guests.

Benefits are valid through 12/31/13.

### TICKETS AVAILABLE NOW!



### MICKEY'S NOT-SO-SCARY HALLOWEEN PARTY

Magic Kingdom® Park

Select nights September 10–November 1  
Buy early and save up to \$9 on select nights as an Annual Passholder.

[disneyworld.com/passholder](http://disneyworld.com/passholder)



### MICKEY'S VERY MERRY CHRISTMAS PARTY

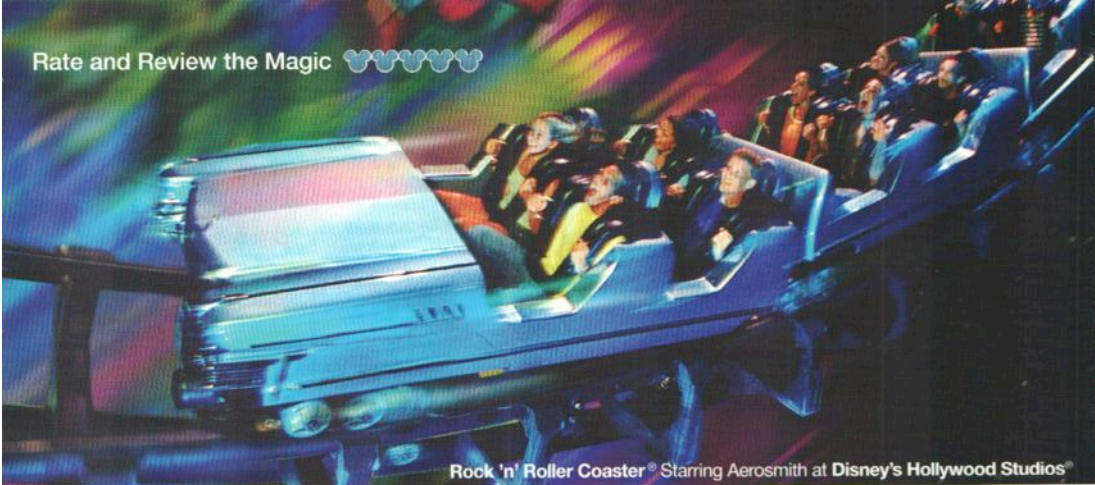
Magic Kingdom Park

Select nights November 8–December 20  
Buy early and save up to \$9 on select nights as an Annual Passholder.

[disneyworld.com/passholder](http://disneyworld.com/passholder)



Rate and Review the Magic



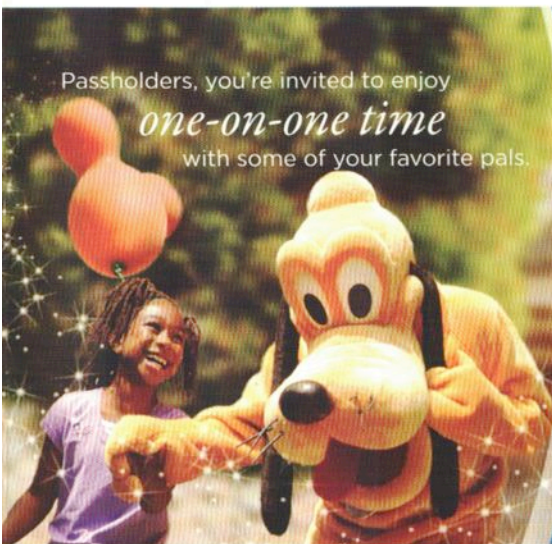
## Rate and review your experiences!

NEW! Be among the first to rate and review your own **Walt Disney World®** experiences and share your expertise on our new [disneyworld.com/reviews](http://disneyworld.com/reviews) beta site!

- Rate and review **Walt Disney World** attractions, **Disney Resort** hotels and dining
- Participate in Ask the Community to submit questions and share your expert tips

Plus, you can explore reviews from others and share reviews with family and friends on Facebook and Twitter. Get started today at [disneyworld.com/reviews](http://disneyworld.com/reviews)!

Passholders, you're invited to enjoy  
*one-on-one time*  
with some of your favorite pals.



Pair up your Annual Pass with the  
**Disney Rewards® Visa® Card**.

Get year-round perks the moment you get your card, including a Character Meet 'N' Greet at our private Cardmember location.<sup>1</sup>

**Apply today. Earn a \$100 statement credit** after you spend \$500 within the first 3 months from account opening.



To apply, visit  
**ApplyDisneyPerks.com**  
or call **1-800-440-3733**  
and use key code **6RM601**.

Let's create some magic.™

<sup>1</sup> Offers subject to change without notice. Use a valid Disney's Visa Card and/or Disney Rewards Redemption Card for special offers. Must mention the offer to receive the merchandise discount. Merchandise discount may not be used for certain items and is not available at certain locations including *Disneyland® Resort* and *Walt Disney World® Resort* Operating Participant locations. For entry into the Character Meet 'N' Greet Photo Opportunity, must present your valid Disney's Visa Card. Not valid in combination with other offers, discounts, promotions or with any previous purchase. Minimum purchase and/or separate Theme Park admission may be required. Offer elements are for personal use only and may not be resold. Offer elements, including but not limited to participating locations, are subject to availability and additional restrictions, and may change or be canceled without notice. Please visit [DisneyVisaPerks.com](http://DisneyVisaPerks.com) for full terms and conditions. Chase is not responsible or liable for fulfillment of these Disney Theme Park perks.

To be eligible for Disney's Visa Credit Card you must have a valid permanent home address within the 50 United States or the District of Columbia. Accounts subject to credit approval. Restrictions and limitations apply. Disney's Visa Credit Cards are issued by Chase Bank USA, N.A. See [ApplyDisneyPerks.com](http://ApplyDisneyPerks.com) for pricing and rewards details.

SM, © Disney



## Stay connected to the magic!

Every issue of the **Mickey Monitor** is packed with Passholder information. But here are two great ways to stay in the know between issues.

- Like our page at [facebook.com/disneyworldpassholders](https://facebook.com/disneyworldpassholders).
- Make sure you're registered at [disneyworld.com/passholder](https://disneyworld.com/passholder).



## What's INSIDE

- A villainous takeover at Disney's Hollywood Studios®
- Mickey's Not-So-Scary Halloween Party
- Halloween sweets and treats
- Epcot® International Food & Wine Festival
- Night of Joy: Michael W. Smith and Steven Curtis Chapman
- The new Princess Fairytale Hall
- And Much More

## GET MORE

Add your email address to your profile at [disneyworld.com/passholder](http://disneyworld.com/passholder) to enjoy extra-special benefits.

## ON THE COVER

The ghoulish **Mickey Monitor** cover art by Lisa K. Weber was inspired by the original **Haunted Mansion**® paintings by Olen Hall. Weber's works have been showcased at galleries in New York, Los Angeles and Philadelphia. She is also acclaimed for her graphic novelizations of classic literature and textiles for dog clothing, as well as character and background designs for children's animations.

**Mickey  
monitor**  
The Walt Disney World® Passholder Newsletter

Disney Destinations, LLC

PO Box 10045

Lake Buena Vista, FL 32830-0045

PSN:STL STD  
U.S. POSTAGE  
PAID  
Disney  
Destinations, LLC



100% Recycled Paper