

PERSONAL NAVIGATOR



Sunrise: 5:12 a.m. Sunset: 9:15 p.m.
Evening Attire: Cruise Casual

Sunday: Partly Sunny High: 64°F/18°C

SUNDAY, JUNE 2, 2013

DAY AT SEA

Disney DREAMS

AN ENCHANTED CLASSIC

In this spectacular fantasy, a little girl discovers the power of her dreams. Fly through the air with Peter Pan and your imagination as many Classic Disney Characters spring to life. With a little Faith, Trust and Pixie Dust you'll see that your dreams can come true!

WALT DISNEY THEATRE

Deck 4, Forward

6:15 p.m. & 8:30 p.m.



Assistance available at the entrance to the Walt Disney Theatre 30 minutes prior to show time.

Disney WONDER Fun Facts

Tonnage: 83,308 gross, 53,899 net

Length Overall: 294m / 964ft

(height of Eiffel Tower is 986ft)

Maximum Speed: 26 knots (30 miles per hour)

Important Dates

Keel Laid: May 15, 1997

Launch Date: July 14, 1999

Inaugural Cruise: October 1, 1999

* The anchor of the Disney Wonder weighs 34,250lbs (15,569kg) - the same weight as three elephants.

* Over 50 nationalities make up the 960 Crew members onboard.

* Steamboat Willie stands proudly 10ft tall on the bow of the ship. There are other characters in the artwork around him.

* Donald and his nephew Huey hang painting the finishing touches on the stern.



'TIL WE MEET AGAIN

The world-famous Disney Characters and some of your new friends from the Disney Wonder stage shows bid you a charming farewell.

Lobby Atrium,
Deck 3, Midship,
10:00 p.m.

Don't Miss:

Captain's Corner

Wavebands, Deck 3, Forward - 9:15 a.m.

Join the Captain for an informal Q&A session about the operation of the Disney Wonder.

Humpbacks & Killer Whales: What You Don't See

Walt Disney Theatre, Deck 4, Forward - 10:00 a.m. - Alaskan Naturalist Series

Join Doug Jones for a look at the types of mammals that are native to Alaska. He will share the habits of Whales, help you to understand their life in the ocean, and share a few personal stories.

Mickey 200

Wavebands, Deck 3, Forward - 12:30 p.m.

Don't eat your vegetables... race them in this wild and wacky charge to the finish line. May the best veggie win! (Limited Availability)

Mickey Mania

Studio Sea, Deck 4, Midship - 7:30 p.m.

Put your family's Disney knowledge to the ultimate test, or play along from our live studio audience.

Debark Talk Broadcast

Important information regarding disembarkation procedures for Vancouver and your journey home will be covered in this debarkation briefing. The broadcast will be shown continuously on channel 223 of your stateroom television for your convenience.

Thank you in advance for completing your comment card.

DINNER MENU

Animator's Palate: 'Til We Meet Again
Parrot Cay: 'Til We Meet Again
Triton's: 'Til We Meet Again

DRINK OF THE DAY

Yellow Bird (Alcoholic)
Espresso Freeze (Non Alcoholic)

IMPORTANT NUMBERS

Fire/Security: 7-3001
Medical Emergency: 7-3000
Health Center: 7-1923

FUN FOR ALL AGES HIGHLIGHTS

INTERDENOMINATIONAL SERVICE

Cadillac Lounge, Deck 3, Forward - 8:30 a.m.

A quiet space is reserved for those wishing to conduct their own service.

JACK-JACK'S INCREDIBLE DIAPER DASH

Lobby Atrium, Deck 3, Midship - 9:00 a.m.

Calling all baby cruisers! The Disney Wonder's babies take to the mat to see who's the fastest crawler of the seven seas! Register your baby from 8:45 a.m. - 9:00 a.m.

CAPTAIN'S CORNER

Wavebands, Deck 3, Forward - 9:15 a.m.

Join the Captain for an informal Q&A session about the operation of the Disney Wonder.

WAKE UP WITH DISNEY JUNIOR

Promenade Lounge, Deck 3, Aft - 9:30 a.m.

What happens when you experience unlimited fun with your favorite Disney Junior shows? An exciting dance party designed especially for preschoolers ages seven and under.

MICKEY 200

Wavebands, Deck 3, Forward - 12:30 p.m.

Don't eat your vegetables... race them in this wild and wacky charge to the finish line. May the best veggie win! (Limited Availability)

FRIENDSHIP ROCKS

Walt Disney Theatre, Deck 4, Forward - 5:00 p.m.

Come and celebrate with all the children from the Oceaneer Club and Oceaneer Lab in the Jammin' performance of Friendship Rocks! You won't want to miss any of the fun.

MICKEY MANIA

Studio Sea, Deck 4, Midship - 7:30 p.m.

Put your family's Disney knowledge to the ultimate test, or play along from our live studio audience.

FAREWELL KARAOKE

Studio Sea, Deck 4, Midship - 10:30 p.m.

Bring along the entire family for one more round of karaoke. This is your last opportunity to grab the mic and sing along to your favorite song.

ADULT ACTIVITY HIGHLIGHTS

VISTA SPA FITNESS CLASSES & SEMINARS

AB Attack - Vista Spa Fitness Center - 7:00 a.m.

Body Sculpt Boot Camp - Vista Spa Fitness Center - 7:30 a.m.

Seminar: Chinese Herbs - Outlook Cafe - 10:15 a.m.

Eat More to Weigh Less - Outlook Cafe - 11:00 a.m.

Secrets to a Flatter Stomach - Outlook Cafe - 1:00 p.m.

Yoga - Vista Spa Fitness Center - 5:00 p.m.



TASTING CLASSES

Chocolate & Beverage Pairing (21+) - Cadillac Lounge - 1:00 p.m.

Beer Tasting (21+) - Diversions - 2:45 p.m.

Mixology (21+) - Cadillac Lounge - 3:00 p.m.

Tequila & Margarita Tasting (21+) - Cadillac Lounge - 5:00 p.m.

Cognac Tasting (21+) - Outlook Cafe - 10:30 p.m.

Please make reservations for tastings at Guest Services for a nominal fee.

Tasting Seminars are only for Guests 21 and Older.

DISNEY'S ART OF ENTERTAINING: DAZZLING DESSERT

Studio Sea, Deck 4, Midship - 10:15 a.m.

Learn to create mouth-watering sweets like a professional pastry chef with easy to follow decadent recipes.

INNOVATIONS: THEME PARKS

Diversions, Deck 3, Forward - 1:45 p.m.

Join us for our presentation showing the "Top 10" greatest innovations that the Walt Disney Company has introduced to theme parks.

HYPNOSIS SEMINAR WITH RICKY KALMON

Buena Vista Theatre, Deck 5, Aft - 11:00 a.m.

Hypnotist Ricky Kalmon will reveal the secrets of losing weight and reducing stress with the use of self-hypnosis.

PUB NIGHT

Wavebands, Deck 3, Forward - 10:45 p.m.

Say "cheers" to new friends in a fun-filled farewell, featuring a hilarious cruise ship skit. A great way to toast the end of your cruise!



\$10,000 MEGA JACKPOT BINGO

Wavebands, Deck 3, Forward

Card Sales - 10:45 a.m.

Game Starts - 11:00 a.m.

It's Big, it's Massive, it's Supersized! It's \$10,000 MEGA jackpot bingo! Take home \$10,000 if you can cover your card in 46 numbers or less. If not, we carry on to play for the biggest cash prize of the session.

FINAL JACKPOT BINGO

Wavebands, Deck 3, Forward

Card Sales - 3:00 p.m.

Game Starts - 3:30 p.m.

The snowball jackpot **MUST BE WON** at this final session! Who will be the lucky winner? An estimated \$10,000 in prize money to be won.

YOUTH ACTIVITIES HIGHLIGHTS

DINE & PLAY

A convenience for families dining at 8:15 p.m., our Youth Activities Counselors will be available at 9:15 p.m. at the entrance of Triton's, Parrot Cay and Animator's Palate dining rooms to bring registered children to join the fun in the Oceaneer Club and Oceaneer Lab.



Deck 5, Aft (7-18500) 8:00 a.m. - 11:00 p.m.

Infants and Toddlers can enjoy toys and activities at Flounder's Reef Nursery. Reservations are first come, first served so please stop by!



Deck 5, Midship (7-1440) 9:00 a.m. - 12:00 a.m.
(3 - 12 years old)

SWINGIN' LIKE TARZAN

1:30 p.m.

Trashin' the camp like Terk, sketching like Jane, sliding like Tarzan, and giving the best jungle yell will be some of the activities for your children in this adventure.

FRIENDSHIP ROCKS

5:00 p.m.

Come and celebrate with all the children from the Oceaneer Club and Lab in the jammin' performance of Friendship Rocks! You won't want to miss any of the fun.



Deck 5, Midship (7-1445) 9:00 a.m. - 12:00 a.m.
(3 - 12 years old)

NOW A WORD FROM YOUR SPONSOR

9:30 a.m.

Always wanted to see yourself on the big screen? Be a star of your own commercial.

FRIENDSHIP ROCKS

5:00 p.m.

Come and celebrate with all the children from the Oceaneer Club and Lab in the jammin' performance of Friendship Rocks! You won't want to miss any of the fun.



Deck 2, Midship (7-5810) 10:00 a.m. - 12:00 a.m.
(11 - 14 years old)

SHIP FACTOR

1:00 p.m.

Ready for one of the toughest challenge competitions onboard?

HOW WELL DO YOU KNOW YOUR COUNSELOR?

9:30 p.m.

Do you think you know all there is to know about your counselors? Come test out your knowledge with all of your friends!



Deck 11, Midship (7-18517) 11:00 a.m. - 1:00 a.m.
(14-17 years old)

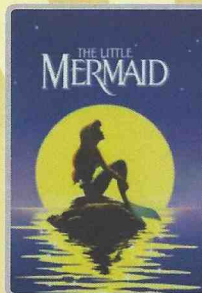
PUMP IT UP

9:00 p.m.

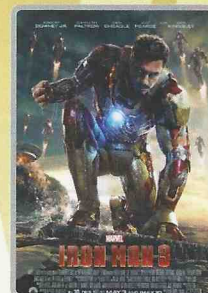
Join us in the Fitness Center for a Teen Only workout. Meet in Vibe to join in!

BUENA VISTA THEATRE

Today's Movies



8:30 a.m.
Duration: 1 hr 30 min
Rating:



2:00 p.m. & 10:45 p.m.
Duration: 2 hr 10 min
Rating: PG-13



5:00 p.m. & 8:00 p.m.
Duration: 2 hr 07 min
Rating: PG

YOUTH ACTIVITIES OPEN HOUSE

Open House is an opportunity for all to come and participate in a variety of exciting activities and free time in Flounder's Reef Nursery, Oceaneer Club, Lab, Edge and Vibe throughout the cruise. During these times secured programming will still be offered in the other venue for those looking to check their children into care.

Vibe: 5:30 p.m. - 7:00 p.m.
Edge: 10:00 a.m. - 12:00 p.m.

Disney's Oceaneer Club: 9:00 a.m. - 10:30 a.m.

MORE TO ENJOY WHILE ONBOARD



ONBOARD BOOKING DISCOUNT

Want to take advantage of the Onboard Booking Discount, But not sure when and where you want to sail? Ask about our "Place Holder" reservation to secure your special discount today. Visit the Future Cruise Sales Desk.



DISNEY VACATION CLUB® GROUP PREVIEW

Want to learn more about taking magical vacations year after year? Please see a Disney Vacation Club representative on Deck 4, Midship, or call 7-2805 from your stateroom phone for more information about our interactive group presentation.

TRANSPORTATION

12:00 p.m. today is the last chance to book transportation to Vancouver Airport. Stop by the Guests Services Desk, located Deck 3, Midship. \$25 per person.

QUARTER MASTER ARCADE

Where can you fly a fighter jet, save a Princess, race NASCAR's greatest and beat bad guys all before dinner? Quarter Master is on Deck 9, Midship, where the champions play.

SURF @ SEA

\$0.75 per minute or save money by buying blocks of time. \$55 for 100 minutes, \$100 for 250 minutes and \$150 for 500 minutes. Wireless information sheets are available at Guest Services, Deck 3, Midship and Internet Cafe, Deck 3, Aft. **Due to the technology involved and satellite connectivity, the onboard internet service will be noticeably slower than you may be accustomed to and might at times be interrupted or unavailable.**

EXPRESS CHECK OUT

If you have a credit card on file, you qualify for express check out. No need to visit Guest Services to settle your account.

EXPRESS WALK OFF

Carry all your luggage and be the first to get off the ship once the ship has been cleared in Vancouver.

SHOPPING

SOPHIA FIORI LAST OPPORTUNITY BLOW OUT SALE!

This is your last chance to get your hands on our fantastic collection of Sophia Fiori Couture diamond jewelry. Drop in to the Treasure Ketch and save 50% off your purchase and free sizing on any Sophia Fiori ring! These exquisite diamonds are not available back home so take advantage of these stunning deals and do not miss out!

TIL WE MEET AGAIN!

Although our time together is coming to a close, your memories will always live on! Visit Mickey's Mates for all your last minute Disney Cruise Line items.

OFFICER PIN TRADING

Come and trade pins with the Officers of the Disney Wonder. Lobby Atrium Deck 3, Midship between 7:15 p.m. and 8:00 p.m.

CATCH THE CAPTAIN

Meet Captain Thord at 12:15 p.m. in Treasure Ketch. Have your cruise mementos signed by the Master of Disney Wonder!

ART GALLERY - SILENT ART AUCTION

Place your bid on Inks, Line Art and other pieces. Auction starts at 1:00 p.m. - 4:00 p.m. Visit your Gallery Host between 1:00 p.m. - 4:00 p.m. and 7:00 p.m. - 9:00 p.m. in the Art Gallery, Deck 4, Midship for more information.

BEAUTIFULLY DISNEY!

Captivate your mind with the Beautifully Disney, a new collection of cosmetics and beauty products. The first of many collections from Beautifully Disney, Wickedly Beautiful arrives onboard. This collection takes you into a world of good vs. evil, where soft and deep lacquer crèmes shimmer with glitter, richly unite to create modern interpretations from Snow White to Maleficent.



VISTA SPA

Deck 9, Forward - Phone : 7-1465

SALON TASTER

Enjoy all of the following

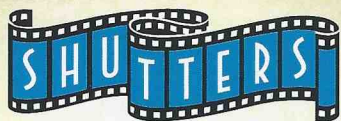
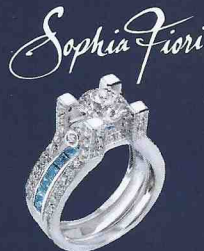
- Mini Booster Facial • Frangipani Scalp Massage
- Neck and Shoulder Massage

50 Minutes Only \$99

(Please note that Salon Taster is performed in an open Salon environment)

TODAY'S SHOPPING SPECIAL

Stop by Treasure Ketch to try on the world's most memorable white diamond pieces and commemorate your cruise. Ask the hosts about 50% savings off US retail. Treasure Ketch, Deck 4, Forward.



GREAT VALUE PHOTO PACKAGES

Maximize savings on our photo packages

10 prints or 10 digital files - \$149.95

20 prints or 20 digital files - \$249.95

All digital files - \$349.95

Offer valid per stateroom only

*Please note that photos are available for viewing on our interactive photo kiosks approximately five hours after being taken and are only available for purchase during this cruise.

IMPORTANT INFORMATION

Security Notice

All Guests (including Children) who wish to disembark or embark the ship are required to present their Key to the World card at the gangway. A photo ID is also required for those Guests who are 18 years of age or older. Guests under the age of 18 are required to have a Parent, Guardian or other responsible adult sign an authorization form at the time it is given out if they wish to go ashore unaccompanied. Authorization forms are available at the gangways and Guest Services.

Cold and Flu Reminder

Please wash hands frequently and thoroughly, particularly before meals. Contact the Health Center by dialing 7-1923, should anyone in your party become ill.

Inclement Weather

For the safety of all Guests, outdoor events may be changed due to unforeseen weather conditions.

Corridor Quiet Hours

As a courtesy to all our Guests, please recognize quiet hallway hours from 10:00 p.m. til 8:00 a.m.

Environmental Message

With Disney's commitment to the Environment please refrain from throwing anything over the Ship's side. Thank you.

No Reserved Seats Policy

As a courtesy to all Guests we kindly advise that the saving of seats is not permitted in the Walt Disney Theatre, and the saving of the sun loungers is not permitted on Deck 9 and 10. Items left unattended will be returned to lost and found at Guest Services, Deck 3, Midship.

Smoking

For the comfort of our Guests the following open deck areas on the Starboard Side are designated as Smoking areas: Deck 4, Starboard side from 6:00 p.m. to 6:00 a.m. ONLY, Deck 9, Forward Starboard side at Quiet Cove and Deck 10, Starboard side. Smoking is prohibited in all Guest staterooms. Guests found smoking in their staterooms will be charged a \$250 stateroom recovery fee. Electronic cigarettes may only be used in designated smoking areas.

Sunscreen Advisory




Don't forget to apply sunscreen and insect repellent when going ashore.



Walt Disney Theatre


Theatrical performances may use artificial fog, strobe lights, pyrotechnics and other special effects. For the safety of our performers and the comfort of those around you, the use of any photography or video recording device or any electronic equipment is prohibited.

Verandah Safety

Please do not leave any combustible materials on your balcony when not present in your stateroom for safety reasons.

Morning	8:30	8:45	9:00	9:15	9:30	9:45	10:00	10:15	10:30	10:45	11:00	11:15	11:30	11:45	12:00	12:15	12:30	12:45	1:00	1:15	1:30				
FUNNEL VISION											Peter Pan (G) Funnel Vision					Cinderella (G) Funnel Vision									
BUENA VISTA THEATRE	The Little Mermaid (G) Duration: 1 Hours 23 Minutes										Hypnosis Seminar with Ricky Kalmon (18+) Buena Vista Theatre														
CHARACTER	For detailed character appearances, call 7-PALS or refer to the Character Screen in the Lobby Atrium.										Princess Gathering Atrium	Donald Dk 4, Mid	Daisy Dk 4, Mid												
FUN FOR ALL AGES	Interdenominational Service Cadillac Lounge		 Lobby Atrium		 Promenade Lounge		Humpbacks and Killer Whales: What You Don't See Alaskan Naturalist Series Walt Disney Theatre		Bingo Pre Sales	 Wavebands			Animation - Minnie Animator's Palate			Mickey 200 Wavebands									
	Captain's Corner Wavebands				Alaskan Trivia Promenade Lounge				Disney Vacation Club Group Preview Studio Sea																
ADULTS	Friends of Bill W. Outlook Cafe		Walk A Mile Meet at Preludes			Disney's Art of Entertaining: Dazzling Dessert Studio Sea			Hypnosis Seminar with Ricky Kalmon Buena Vista Theatre					Singles' Mingle Triton's		Chocolate & Beverage Pairing Cadillac Lounge (Pre-Book)									
	Book and magazines available at Cove Cafe.					Seminar: Chinese Herbs Outlook Cafe			Napkin Folding Studio Sea		Club 18*21 Lunch Triton's			Secrets To A Flatter Stomach Outlook Cafe											
VIBE 14-17 YEARS OLD											Teen Choice										Ice Cream Social				
EDGE 11-14 YEARS OLD											☺ Open House										Ship Factor				
OCEANEER LAB 3-12 YEARS OLD											👉 Now A Word From Your Sponsor					👉 Piston Cup Challenge					Lunch		👉 Pinata Party		
OCEANEER CLUB 3-12 YEARS OLD											☺ Youth Activities Open House "Nemo's Coral Reef Adventure" 9:30 a.m. - 10:15 a.m.					Transition					Lunch		Swingin' Like Tarzan		

Afternoon	1:45	2:00	2:15	2:30	2:45	3:00	3:15	3:30	3:45	4:00	4:15	4:30	4:45	5:00	5:15	5:30	5:45	6:00	6:15	6:30	6:45
FUNNEL VISION	Aladdin (G) Funnel Vision							Little Mermaid (G) Funnel Vision			Virtual Games Funnel Vision			Beauty & the Best (G) Funnel Vision							
BUENA VISTA THEATRE	Iron Man 3 (PG-13) Duration: 2 Hours 10 Minutes										Oz The Great and Powerful (PG) Duration: 2 Hours 07 Minutes										
CHARACTER							Character Dance Party Atrium						Goofy Lobby, Port Side		Disney Dreams Walt Disney Theatre						
FUN FOR ALL AGES	Golf Chipping Lobby Atrium					Bingo Pre Sales		 Wavebands			Friendship Rocks Walt Disney Theatre			 Walt Disney Theatre							
	Crafts: Wind Chimes Promenade Lounge		Game Show: The Wheel Promenade Lounge		Disney Tunes Trivia LIVE Promenade Lounge			Who Am I? Promenade Lounge			Talent Show Rehearsals Wavebands		Family Time with Sonic Groove Promenade Lounge								
ADULTS	Animation - Minnie Animator's Palate						The Feud Diversions			Sports Trivia Diversions			Yoga Vista Spa Fitness Cntr								
VIBE 14-17 YEARS OLD	Ship Factor						Gender Wars						☺ Open House								
EDGE 11-14 YEARS OLD	Ship Factor		Dodgeball												☺ Open House						
OCEANEER LAB 3-12 YEARS OLD	👉 Pinata Party					👉 Friendship Rocks Prep			👉 Friendship Rocks			Dinner									
OCEANEER CLUB 3-12 YEARS OLD	👉 Swingin' Like Tarzan					👉 Carnival Extravaganza			👉 Friendship Rocks Prep			👉 Friendship Rocks			👉 Memory Wall		Dinner				
OUT AND ABOUT	Dodgeball Edge						Open House Edge														

Evening	7:00	7:15	7:30	7:45	8:00	8:15	8:30	8:45	9:00	9:15	9:30	9:45	10:00	10:15	10:30	10:45	11:00	11:15	11:30	11:45	12:00
FUNNEL VISION	Tangled (G) Funnel Vision										Enchanted (PG) Funnel Vision										
BUENA VISTA THEATRE	Oz The Great and Powerful (PG) Duration: 2 Hours 07 Minutes										Iron Man 3 (PG-13) Duration: 2 Hours 10 Minutes										
CHARACTER	Goofy Lobby, Port Side		Mickey Lobby, Port Side			Disney Dreams Walt Disney Theatre			"Til We Meet Again Atrium			For detailed character appearances, call 7-PALS or refer to the Character Screen in the Lobby Atrium.									
FUN FOR ALL AGES	Officer Pin Trading Atrium > 8:00 p.m.		Guest Talent Show Wavebands			 Walt Disney Theatre			Farewell Karaoke Studio Sea												
			Mickey Mania Studio Sea			Party Tunes with Sonic Groove Promenade Lounge			Love Songs & Duets with Sonic Groove Promenade Lounge			Ballroom with Sonic Groove Promenade Lounge									
ADULTS	Music & Martinis with Seth Gibson Cadillac Lounge						Party Favorites with The Signed Wavebands			Pub Night Wavebands		Farewell Favorites with The Signed Wavebands									
VIBE 14-17 YEARS OLD	Sports Deck Fun						Pump It Up						Final Farewell Slideshow			Final Farewell					
EDGE 11-14 YEARS OLD	Crafts Galore						How Well Do You Know Your Counselor?						Final Farewell Slideshow			Final Farewell					
OCEANEER LAB 3-12 YEARS OLD	👉 Ratatouille Cooking School												👉 Marshmallow Olympics								
OCEANEER CLUB 3-12 YEARS OLD	👉 Pluto's Pajama Party												👉 Final Farewell								

Symbol for activities that will be repeated during the cruise

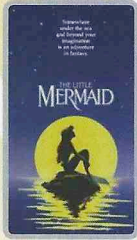
FOLD

Fold along the dotted lines and take me with you so you don't miss any of the fun!

FOLD

IN THE SPOTLIGHT SERIES
SOLVE IT! SERIES
UP & UP! SERIES
CREATE & INVENT SERIES
OPEN HOUSE
CLUBHOUSE SERIES
STORYBOOK SERIES

BUENA VISTA THEATRE



8:30 a.m.
 Duration: 1 hr 30 min
 Rating: G



2:00 p.m. & 10:45 p.m.
 Duration: 2 hr 10 min
 Rating: PG-13



5:00 p.m. & 8:00 p.m.
 Duration: 2 hr 07 min
 Rating: PG

Character Appearances

PRINCESS GATHERING
 Lobby Atrium - 10:00 a.m.

DONALD DUCK
 Deck 4, Midship - 10:30 a.m.

DAISY DUCK
 Deck 4, Midship - 11:00 a.m.

CHARACTER DANCE PARTY
 Lobby Atrium - 3:00 p.m.

GOOFY
 Lobby Atrium, Port Side -
 5:30 p.m. & 7:15 p.m.

MICKEY MOUSE
 Lobby Atrium, Port Side -
 7:45 p.m.

'TIL WE MEET AGAIN
 Lobby Atrium - 10:00 p.m.



Don't forget your Camera to capture those Magical Moments!

Check here each day for Character appearances.

For detailed Character appearance information, please dial 7-PALS or see the Character Information Board in the Lobby Atrium.

Meet-and-Greets will be advertised for the length of time the line will be open. To avoid disappointment, please meet at start time of appearances.

YOUTH ACTIVITIES THEMED EXPERIENCES

CLUBHOUSE SERIES
 focuses on movement and features content which appeals to younger children.

STORYBOOK SERIES
 is designed with a strong connection to the Disney classic stories.

JUMP UP! SERIES
 includes large ground games & movement-oriented activities.

CREATE & INVENT SERIES
 will have a tactile focus allowing children to create and admire their work.

IN THE SPOTLIGHT SERIES
 focuses on children's stage presence with lots of activities and enthusiasm.

SOLVE IT! SERIES
 are less active, but will challenge children with problem/solutions-based activities.

YOUTH ACTIVITIES OPEN HOUSE

Activities for families, adults and children of all ages to enjoy together.

SHIP DIRECTORY

YOUTH ACTIVITIES

DISNEY'S OCEANEER CLUB	DECK 5, MID	9:00 AM - 12:00 MID
DISNEY'S OCEANEER LAB	DECK 5, MID	9:00 AM - 12:00 MID
EDGE	DECK 2, MID	10:00 AM - 12:00 MID
VIBE	DECK 11, MID	11:00 AM - 1:00 AM
FOUNDER'S REEF NURSERY	DECK 5, AFT	8:00 AM - 11:00 PM

RECREATION

GOOFY'S POOL	DECK 9, MID	6:00 AM - 12:00 MID
MICKEY'S POOL	DECK 9, AFT	8:00 AM - 10:00 PM
MICKEY'S SLIDE	DECK 9, AFT	10:00 AM - 4:00 PM
MICKEY'S SPLASH ZONE	DECK 9, AFT	8:00 AM - 8:00 PM
QUIET COVE POOL	DECK 9, FWD	6:00 AM - 12:00 MID
VISTA FITNESS CENTER	DECK 9, FWD	6:00 AM - 10:00 PM
WIDE WORLD OF SPORTS DECK	DECK 10, AFT	24 HOURS

GENERAL INFORMATION

BUENA VISTA THEATRE	DECK 5, AFT	SHOWTIMES
DISNEY VACATION CLUB DESK	DECK 4, MID	9:00 AM - 12:00 PM 2:30 PM - 10:00 PM
FUNNEL VISION	DECK 9, MID	SHOWTIMES
FUTURE CRUISE SALES DESK	DECK 4, MID	9:00 AM - 12:00 PM 3:30 PM - 6:00 PM 7:00 PM - 8:30 PM 9:00 PM - 10:00 PM
GUEST SERVICES	DECK 3, MID	24 HOURS
HAIR BRAIDING	DECK 9, MID	9:00 AM - 12:30 PM 2:30 PM - 5:00 PM
MEDICAL HEALTH CENTER	DECK 1, FWD	9:30 AM - 11:00 AM 4:30 PM - 7:00 PM
PORT & SHOPPING DESK	DECK 3, MID	7:00 PM - 8:00 PM
PRELUDES	DECK 4, FWD	5:45 PM - 6:15 PM 8:00 PM - 8:30 PM
QUARTER MASTERS (ARCADE)	DECK 9, MID	24 HOURS
SHUTTERS PHOTO GALLERY	DECK 4, AFT	10:00 AM - 11:00 PM
VISTA SPA AND SALON	DECK 9, FWD	8:00 AM - 10:00 PM
WALT DISNEY THEATRE	DECK 4, FWD	SHOWTIMES

SHOPPING

ART GALLERY	DECK 4, MID	1:00 PM - 4:00 PM 7:00 PM - 9:00 PM
MICKEY'S MATES	DECK 4, MID	9:00 AM - 10:30 PM
RADAR TRAP (DUTY FREE)	DECK 3, MID	4:00 PM - 10:00 PM
TREASURE KETCH	DECK 4, MID	9:00 AM - 10:30 PM

DINING & LOUNGES

BREAKFAST

BEACH BLANKET BUFFET	DECK 9, AFT	7:30 AM - 10:30 AM
GOOFY'S GALLEY	DECK 9, AFT	7:00 AM - 9:00 AM
PARROT CAY	DECK 3, AFT	8:30 AM - 11:00 AM
TRITON'S (À-LA CARTE)	DECK 3, MID	8:00 AM - 9:30 AM

LUNCH

BEACH BLANKET BUFFET	DECK 9, AFT	12:00 PM - 2:00 PM
GOOFY'S GALLEY	DECK 9, AFT	10:30 AM - 7:00 PM
PARROT CAY	DECK 3, AFT	12:15 PM - 1:30 PM
PINOCCHIO'S PIZZERIA	DECK 9, MID	10:30 AM - 6:00 PM
PLUTO'S DOG HOUSE	DECK 9, AFT	10:30 AM - 6:00 PM
TRITON'S	DECK 3, MID	12:00 PM - 1:30 PM

DINNER

ANIMATOR'S PALATE	DECK 4, AFT	5:45 PM & 8:15 PM
PARROT CAY	DECK 3, AFT	5:45 PM & 8:15 PM
TRITON'S	DECK 3, MID	5:45 PM & 8:15 PM
PALO*	DECK 10, AFT	6:00 PM - 9:00 PM
PLUTO'S DOG HOUSE	DECK 9, AFT	6:00 PM - 9:30 PM

LATE NIGHT SNACKS

DIVERSIONS	DECK 3, FWD	11:00 PM - 12:00 MID
ICE CREAM AT GOOFY'S GALLEY	DECK 9, AFT	7:00 PM - 11:00 PM
PINOCCHIO'S PIZZERIA	DECK 9, MID	9:30 PM - 12:00 MID
PROMENADE LOUNGE	DECK 3, AFT	11:00 PM - 12:00 MID

ADDED FEATURES

BEVERAGE STATION	DECK 9, AFT, PORT SIDE	24 HOURS
ROOM SERVICE	DIAL 6801 OR 6802	UNTIL 1:00 A.M.

ENTERTAINMENT - LOUNGES - BARS

Adults must be 21 and older to consume alcoholic beverages.

CADILLAC LOUNGE (18+)	DECK 3, FWD	6:00 PM - 12:00 MID
COVE CAFE (18+)	DECK 9, MID	6:30 AM - 12:00 MID
DIVERSIONS (18+ AFTER 9:00 P.M.)	DECK 3, FWD	11:00 AM - 12:00 MID
INTERNET CAFE	DECK 3, AFT	24 HOURS
OUTLOOK CAFE (18+)	DECK 10, MID	7:00 AM - 12:00 MID
PINOCCHIO'S PIZZERIA	DECK 9, MID	9:00 AM - 12:00 MID
PLUTO'S DOG HOUSE	DECK 9, AFT	10:30 AM - 6:00 PM
PRELUDES	DECK 4, FWD	5:45 PM - 6:15 PM 8:00 PM - 8:30 PM
PROMENADE LOUNGE (FAMILY)	DECK 3, AFT	8:00 AM - 12:00 MID
SIGNALS (18+)	DECK 9, FWD	9:30 AM - 10:00 PM
STUDIO SEA	DECK 4, MID	SHOWTIMES
WAVEBANDS (18+)	DECK 3, FWD	9:45 PM - 2:00 AM

Consumers who order raw or partially cooked, ready-to-eat food of animal origin, are hereby informed that the food is not sufficiently cooked to ensure its safety.