

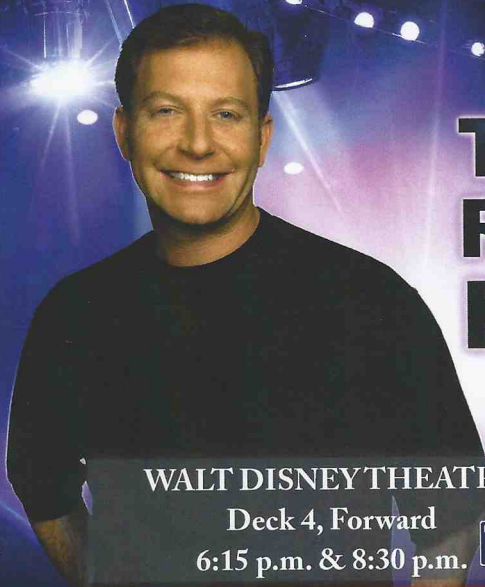
PERSONAL NAVIGATOR WUNDER

Sunrise: 4:13 a.m. Sunset: 9:16 p.m.
Evening Attire: Semi-Formal
All Ashore: Approx: 11:15 a.m.
All Aboard: 7:30 p.m.

Saturday: Partly Sunny High: 56°F/13°C

SATURDAY, JUNE 1, 2013

KETCHIKAN, ALASKA



T·H·E RICKY KALMON HYPNOSIS SHOW

The ONLY Comedy Show Where the Audience Becomes The Stars!®

WALT DISNEY THEATRE

Deck 4, Forward

6:15 p.m. & 8:30 p.m.



Assistance available at the entrance to the Walt Disney Theatre 30 minutes prior to show time.

KETCHIKAN

Ketchikan was originally established as a fishing camp back in 1883, when a salmon saltery was built by a man named Snow. The city became an important mining supply center following the discovery of gold and copper in the region.

To support the growth of the city, the logging industry began to flourish. Ketchikan Spruce Mills started operation in 1903 and the city became the hub for logging activities and supplies. The mill operated for over 70 years.

Today, the economy is based on tourism and fishing and the city is known as the "Salmon Capital of the World." Ketchikan is located in Southeast Alaska on Revillagigedo Island along the Tongass Narrows, at the foot of 3,000-foot Deer Mountain. Ketchikan is only accessible by boat or plane.

TIME ZONE CHANGE



Remember to turn your clocks
FORWARD 1 HOUR upon retiring
on **SATURDAY** evening, or first
thing **SUNDAY** morning.



Please check your tour tickets for meeting times and locations.
Visit the Port Adventures Desk, Deck 3, Midship for any questions.

DINNER MENU

Animator's Palate: Taste of Alaska
Parrot Cay: Taste of Alaska
Triton's: Taste of Alaska

DRINK OF THE DAY

Ooh La La (Alcoholic)
Bora Shake (Non Alcoholic)

IMPORTANT NUMBERS

Fire/Security: 7-3001
Medical Emergency: 7-3000
Health Center: 7-1923

FUN FOR ALL AGES HIGHLIGHTS

DISNEY VACATION CLUB GROUP PREVIEW

Studio Sea, Deck 4, Midship - 10:00 a.m.

Want to learn more about taking magical vacations year after year? Please see a Disney Vacation Club representative on Deck 4, Mid-Ship, or call 7-2805 from your stateroom phone for more information about our interactive group presentation.

KETCHIKAN SHOPPING HIGHLIGHTS

Promenade Lounge, Deck 3, Aft - 10:00 a.m.

Ketchikan is one of the Largest Shopping Ports in Alaska. Don't miss a thing today when going ashore! Learn about everything from Salmon to Diamonds & Swiss Time Pieces. All to attend will receive a free charm and the chance to win a Tanzanite Pendant!

CHIP-IT GOLF (12+)

Promenade Lounge, Deck 3, Aft - 10:45 a.m.

It's par for the course for our Guests 12 and older to compete on our special "greens" in this fun tournament.

FAMILY CRAFTS

Promenade Lounge, Deck 3, Aft - 12:30 p.m. - Animal Masks

Promenade Lounge, Deck 3, Aft - 3:00 p.m. - Bead Creations

Join your Cruise Staff for two opportunities to create some great keepsakes from your cruise vacation at these crafting sessions.

SO YOU THINK YOU KNOW YOUR FAMILY?

Studio Sea, Deck 4, Midship - 7:30 p.m. & 9:45 p.m.

This fun-filled family game show is always full of surprises. Find out how well you know, or don't know your family!

CLUB STUDIO SEA

Studio Sea, Deck 4, Midship - 10:30 p.m.

Join your Cruise Staff team as you dance the night away to all your favorite top hits.

ADULT ACTIVITY HIGHLIGHTS

VISTA SPA FITNESS CLASSES & SEMINARS

Sunrise Stretch - Vista Spa Fitness Center - 7:00 a.m.

Complimentary Footprint Analysis - Vista Spa Fitness Center - 9:30 a.m.

Tour De Cycle - Vista Spa Fitness Center - 5:00 p.m.



VISTA SPA

TASTING CLASSES

Whiskey Tasting (21+) - Outlook Cafe - 10:30 p.m.

Please make reservations for tastings at Guest Services for a nominal fee. Tasting Seminars are only for Guests 21 and Older.

CLUB
18*21

MIX AND MINGLE

Outlook Cafe, Deck 10, Forward - 5:15 p.m.

60'S MUSIC CHALLENGE

Diversions, Deck 3, Forward - 4:30 p.m.

Let's step back in time as we test your 60's music knowledge with your Club Host, Simon.

VARIETY SHOW: MICHAEL HOLLY

Wavebands, Deck 3, Forward - 10:30 p.m.

Featuring the Comedy & Juggling of Michael Holly, in this exclusive adult cabaret style show.

MATCH YOUR MATE

Wavebands, Deck 3, Forward - 11:00 p.m.

It's time to play everyone's favorite couples game show - Match Your Mate!

DOUBLE UP JACKPOT BINGO

Wavebands, Deck 3, Forward

Card Sales - 9:45 a.m.

Game Starts - 10:00 a.m.

Special double up session: All electronic cards purchased will be doubled! The snowball jackpot continues to grow and could be won today!



YOUTH ACTIVITIES HIGHLIGHTS

DINE & PLAY

A convenience for families dining at 8:15 p.m., our Youth Activities Counselors will be available at 9:15 p.m. at the entrance of Triton's, Parrot Cay and Animator's Palate dining rooms to bring registered children to join the fun in the Oceaneer Club and Oceaneer Lab.



Deck 5, Aft (7-18500) 9:00 a.m. - 11:00 p.m.

Infants and Toddlers can enjoy toys and activities at Flounder's Reef Nursery. Reservations are first come, first served so please stop by!



Deck 5, Midship (7-1440) 9:00 a.m. - 12:00 a.m.
(3 - 12 years old)

HATS OFF TO PETER PAN

4:00 p.m.

You'll believe you can fly. All it takes is faith, trust, and pixie dust and a special visit from Peter Pan! Rediscover the magic of Neverland!

MAGIC SHOW

7:30 p.m.

The Magnificent Magician will demonstrate to you some of the best known magic tricks on the sea.



Deck 5, Midship (7-1445) 9:00 a.m. - 12:00 a.m.
(3 - 12 years old)

SHAKE IT UP!

9:15 a.m.

You've seen the show; now come learn the move to one of the most popular dances of the summer!

4TH PIGS PASTA PALACE

10:30 a.m.

Build your very own house made out of pasta and play-doh for Franco, the Fourth Little Pig, to see if it will withstand nature's forces.



Deck 2, Midship (7-5810) 10:00 a.m. - 1:00 a.m.
(11 - 14 years old)

VILLAINOUS VENTURES

3:00 p.m.

The Disney villains have cast a spell on the ship and only you can break it. Teams must work together as they hunt for clues around the ship.

BINGO

1:30 p.m.

It's bingo time!



Deck 11, Midship (7-18517) 11:00 a.m. - 2:00 a.m.
(14-17 years old)

PUMP IT UP

9:00 p.m.

Join us in the Fitness Center for a Teen Only workout. Meet in Vibe to join in!

BUENA VISTA THEATRE

Today's Movies



10:30 a.m.
Duration: 1 hr 24 min
Rating: G



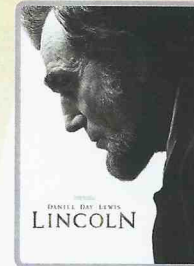
12:30 p.m.
Duration: 1 hr 53 min
Rating: PG



2:45 p.m.
Duration: 2 hr 10 min
Rating: PG-13



5:15 p.m. & 8:00 p.m.
Duration: 2 hr 10 min
Rating: PG-13



10:45 p.m.
Duration: 2 hr 30 min
Rating: PG-13



ADULT VARIETY

Featuring the Physical Comedy of Michael Holly, as he entertains you in this adult exclusive show. **WaveBands (18+), Deck 3, Forward, 10:30 p.m.**



It's time to play everyone's favorite couple's game show - Match your Mate!

WaveBands (18+), Deck 3, Forward, 11:00 p.m.

YOUTH ACTIVITIES OPEN HOUSE

Open House is an opportunity for all to come and participate in a variety of exciting activities and free time in Flounder's Reef Nursery, Oceaneer Club, Lab, Edge and Vibe throughout the cruise. During these times secured programming will still be offered in the other venue for those looking to check their children into care.

Vibe: 11:30 a.m. - 1:30 p.m.
Edge: 10:00 a.m. - 12:00 p.m.

Disney's Oceaneer Lab: 7:15 p.m. - 8:30 p.m.
Disney's Oceaneer Club: 9:00 a.m. - 11:00 a.m.

MORE TO ENJOY WHILE ONBOARD



DISNEY VACATION CLUB® GROUP PREVIEW

Want to learn more about taking magical vacations year after year? Please see a Disney Vacation Club representative on Deck 4, Midship, or call 7-2805 from your stateroom phone for more information about our interactive group presentation.

2014!

New in 2014! Depart from San Juan, Puerto Rico and discover the beautiful islands of the Eastern Caribbean with ports of call in St. Kitts, Antigua, St. Lucia, Grenada and Barbados. Leave from Port Canaveral, Florida and explore the islands of St. Maarten, St. Thomas and Disney's private island, Castaway Cay. Visit the Future Cruise Sales Desk for more information.



SHOPPING ASHORE

KETCHIKAN SHOPPING HIGHLIGHTS

10:00 a.m. - Promenade Lounge, Deck 3, Midship
Don't miss a thing in Ketchikan today. Join your Shopping Guides, Johan & Marissa, for your last chance to learn about the Amazing Shopping in Ketchikan today! Free Charm for all in attendance and a raffle to win a Tanzanite Pendant.



VISTA SPA

Deck 9, Forward - Phone: 7-1465

20/20/20

Choose and 3 of the below treatments:

- Mini Booster Facial • Full Body Milk Bath Wrap
- Back Neck and Shoulder Massage • Back Exfoliation
- Scalp Massage • Foot and Ankle Massage

60 minutes, only \$119

TODAY'S SHOPPING SPECIAL

If it's chocolate that you crave for, then Treasure Ketch is your location to be fulfilled. Whether it be Pearls, Chocolate bars or boxes of assorted delights there is something for everyone. Each rich filling of fruit, nut and ganache is perfectly paired with a dense shell of milk, dark or white chocolate.



SAY CHEESE!

Receive all your cruise photos in digital format on a CD! Conditions apply. Visit Shutters Photo Gallery, Deck 4, Aft, for more details. Last chance for professional family portraits tonight from 5:15 p.m. - 6:00 p.m., 7:15 p.m. - 8:15 p.m. and 9:30 p.m. - 10:15 p.m.

**Please note that photos are available for viewing on our interactive photo kiosks approximately five hours after being taken and are only available for purchase during this cruise.*

QUARTER MASTER ARCADE

Where can you fly a fighter jet, save a Princess, race NASCAR's greatest and beat bad guys all before dinner? Quarter Master is on Deck 9, Midship, where the champions play.

SURF @ SEA

\$0.75 per minute or save money by buying blocks of time. \$55 for 100 minutes, \$100 for 250 minutes and \$150 for 500 minutes. Wireless information sheets are available at Guest Services, Deck 3, Midship and Internet Cafe, Deck 3, Aft.

Due to the technology involved and satellite connectivity, the onboard internet service will be noticeably slower than you may be accustomed to and might at times be interrupted or unavailable.

ULU KNIVES PURCHASED ASHORE

If not shipped home, Ulu knives will be collected onboard by security and held until Vancouver where you can collect them in the terminal with the lost and found items.

U.S. AGRICULTURAL LAW

It is a violation of U.S. Law to take any fresh fruits, vegetables, plant materials, meat or animal products, or processed foods off the ship or brought onboard the ship in any U.S. ports of call. Guests found with this items will be subject to fines. Canned foods are permissible.



For our fishing and crab enthusiasts, Ketchikan is the right choice! Bering Sea Crab Fishermen's Tour, Knudson Cove Salmon Fishing or Hunting for Halibut might be the right adventure for you! You might want to view some of the most spectacular scenery in Alaska with a full narration from the comfort of your window seat in a floatplane through the Misty Fjords.

SHOPPING

CITIZEN ECO DRIVE WATCHES

It starts with a simple, yet revolutionary concept: a watch that never needs a battery. Citizen Eco-Drive technology harnesses the power of light- from any natural or artificial light source- and converts to energy. See the Collection of Mens and Ladies watches available in Treasure Ketch.

THE LUXURIOUS WORLD OF GODIVA

If it's chocolate that you crave for, then Treasure Ketch is your location to be fulfilled. Whether it be Pearls, Chocolate bars or boxes of assorted delights there is something for everyone. Each rich filling of fruit, nut and ganache is perfectly paired with a dense shell of milk, dark or white chocolate.

ART GALLERY - MORE TO ENJOY WHILE ONBOARD

Welcome onboard, take a minute to stroll through the Art Gallery on Deck 4, Midship and discover special themed Disney artwork. Find a selection of fine art, giclees, lithographs, and original Disney art. Visit our Gallery Host between 9:00 p.m. - 10:00 p.m. for more information.

SOPHIA FIORI DIAMOND TRUNK SHOW

Sophia Fiori is an LA based designer, wholesaler, and one of Hollywood's favorite designers. Industry leaders in vivid colored diamonds, and more specifically Caribbean blue diamond's - one of the single most popular purchases at sea because it reminds everyone of the colors of the Caribbean oceans! Treasure Ketch, Deck 4.

DUTY FREE FRAGRANCE

Find top designer fragrances in Treasure Ketch Deck 4, all available at Duty Free pricing. Choose from varieties such as Chanel, Ralph Lauren, Issey Miyake and many more.

Due to port regulations, when the ship is docked, the stores will remain closed.

IMPORTANT INFORMATION

Security Notice

All Guests (including Children) who wish to disembark or embark the ship are required to present their Key to the World card at the gangway. A photo ID is also required for those Guests who are 18 years of age or older. Guests under the age of 18 are required to have a Parent, Guardian or other responsible adult sign an authorization form at the time it is given out if they wish to go ashore unaccompanied. Authorization forms are available at the gangways and Guest Services.

Cold and Flu Reminder

Please wash hands frequently and thoroughly, particularly before meals. Contact the Health Center by dialing 7-1923, should anyone in your party become ill.

Inclement Weather

For the safety of all Guests, outdoor events may be changed due to unforeseen weather conditions.

Corridor Quiet Hours

As a courtesy to all our Guests, please recognize quiet hallway hours from 10:00 p.m. til 8:00 a.m.

Environmental Message

With Disney's commitment to the Environment please refrain from throwing anything over the Ship's side. Thank you.

No Reserved Seats Policy

As a courtesy to all Guests we kindly advise that the saving of seats is not permitted in the Walt Disney Theatre, and the saving of the sun loungers is not permitted on Deck 9 and 10. Items left unattended will be returned to lost and found at Guest Services, Deck 3, Midship.

Smoking

For the comfort of our Guests the following open deck areas on the Starboard Side are designated as Smoking areas: Deck 4, Starboard side from 6:00 p.m. to 6:00 a.m. ONLY, Deck 9, Forward Starboard side at Quiet Cove and Deck 10, Starboard side. Smoking is prohibited in all Guest staterooms. Guests found smoking in their staterooms will be charged a \$250 stateroom recovery fee. Electronic cigarettes may only be used in designated smoking areas.

Sunscreen Advisory

Don't forget to apply sunscreen and insect repellent when going ashore.

Walt Disney Theatre

Theatrical performances may use artificial fog, strobe lights, pyrotechnics and other special effects. For the safety of our performers and the comfort of those around you, the use of any photography or video recording device or any electronic equipment is prohibited.

Verandah Safety

Please do not leave any combustible materials on your balcony when not present in your stateroom for safety reasons.

Morning	8:30	8:45	9:00	9:15	9:30	9:45	10:00	10:15	10:30	10:45	11:00	11:15	11:30	11:45	12:00	12:15	12:30	12:45	1:00	1:15	1:30				
BUENA VISTA THEATRE	Beauty and the Beast (G) Duration: 1 Hours 24 Minutes												Wreck-It Ralph (PG) Duration: 1 Hours 53 Minutes												
CHARACTER	For detailed character appearances, call 7-PALS or refer to the Character Screen in the Lobby Atrium.																								
FUN FOR ALL AGES	Bingo Pre Sales			Double Up Jackpot BINGO Wavebands				Chip-It Golf (12+) Promenade Lounge				Crafts: Animal Masks Promenade Lounge				The Feud Promenade Lounge									
	Board games available in Diversions and Promenade Lounge.											Disney Vacation Club Group Preview Studio Sea													
ADULTS	Friends of Bill W. Cadillac Lounge			Walk A Mile Meet at Preludes				Informal Card Play Diversions																	
	Magazines and books available in Cove Cafe.			Footprint Analysis Vista Spa Fitness Cntr				Ketchikan Shopping Highlights Promenade Lounge																	
VIBE 14-17 YEARS OLD												Open House													
EDGE 11-14 YEARS OLD												Open House													
OCEANEER LAB 3-12 YEARS OLD	Shake It Up!														4th Pigs Pasta Palace				Lunch				Float Fun Trivia		
OCEANEER CLUB 3-12 YEARS OLD												Open House Do Si Do with Snow White 10:15 a.m. - 11:00 a.m.				Transition				Sebastian's Junkanoo Jam				Lunch	Aladdin's Fun Adventures

Afternoon	1:45	2:00	2:15	2:30	2:45	3:00	3:15	3:30	3:45	4:00	4:15	4:30	4:45	5:00	5:15	5:30	5:45	6:00	6:15	6:30	6:45							
BUENA VISTA THEATRE	Iron Man 3 (PG-13) Duration: 2 Hours 10 Minutes												Iron Man 3 (PG-13) Duration: 2 Hours 10 Minutes															
CHARACTER	For detailed character appearances, call 7-PALS or refer to the Character Screen in the Lobby Atrium.												Minnie Preludes				Pluto Dk 4, Mid		Daisy Preludes		Chip & Dale Dk 4, Mid							
FUN FOR ALL AGES	Cruisin' for Trivia Promenade Lounge			Crafts: Bead Creations Promenade Lounge				Who Am I? Promenade Lounge				Family Time with Sonic Groove Promenade Lounge				Live Piano with Drew Lobby Atrium				Showtime: The Hypnosis of Ricky Kalmon Walt Disney Theatre								
	Coffee Mingle Cove Cafe														60's Music Challenge Diversions				Club 18*21 - Mix and Mingle Outlook Cafe									
ADULTS	Magazines and books available in Cove Cafe.											Tour De Cycle Vista Spa Fitness Cntr																
VIBE 14-17 YEARS OLD	Gotcha Registration				GOTCHA								Scavenger Hunt															
EDGE 11-14 YEARS OLD	Bingo				Villainous Ventures				Sports Deck Fun				A to Z Scavenger Hunt															
OCEANEER LAB 3-12 YEARS OLD	Float Fun Trivia		Animation Antics				Monstropolis Most Wanted				Animation Cells				Dinner													
OCEANEER CLUB 3-12 YEARS OLD	Aladdin's Fun Adventures				Color Yourself Heroic				Hats Off to Peter Pan				Dinner															
OUT AND ABOUT												Sports Deck Fun Wide World of Sports				A to Z Scavenger Hunt Edge												

Evening	7:00	7:15	7:30	7:45	8:00	8:15	8:30	8:45	9:00	9:15	9:30	9:45	10:00	10:15	10:30	10:45	11:00	11:15	11:30	11:45	12:00					
BUENA VISTA THEATRE	Iron Man 3 (PG-13) Duration: 2 Hours 10 Minutes												Lincoln (PG-13) Duration: 2 Hours 30 Minutes													
CHARACTER	Mickey & Minnie Preludes		Donald, Daisy Preludes				Mickey Lobby, Port Side				Chip & Dale Lobby, Starboard				For detailed character appearances, call 7-PALS or refer to the Character Screen in the Lobby Atrium.											
FUN FOR ALL AGES	So You Think You Know Your Family? Studio Sea			Party Tunes with Sonic Groove Promenade Lounge				Family Dance Party with The Signed Wavebands				Neil Diamond Tribute Promenade Lounge				Ballroom with Sonic Groove Promenade Lounge				Club Studio Sea Studio Sea						
	Showtime: The Hypnosis of Ricky Kalmon Walt Disney Theatre			So You Think You Know Your Family? Studio Sea				Party Hits with The Signed Wavebands				Variety: Michael Holly Wavebands				Match Your Mate Wavebands				DJ Wendell Wavebands						
ADULTS	Music & Martinis with Seth Gibson Cadillac Lounge				Simon & Garfunkel Tribute Cadillac Lounge				Elton John Tribute Cadillac Lounge				Piano After Dark with Seth Cadillac Lounge													
VIBE 14-17 YEARS OLD	Sports Deck Fun				Pump It Up								GOTCHA				Homecoming									
EDGE 11-14 YEARS OLD	Gender Wars				Homecoming Creations								Homecoming													
OCEANEER LAB 3-12 YEARS OLD	Open House Ratatouille Cooking School 7:30 p.m. - 8:15 p.m.				Transition				Oceaneer Rangers				Flubber				Lights, Camera, Improv!									
OCEANEER CLUB 3-12 YEARS OLD	Magic Show				The Royal Ball				Memory Wall				Transition				Open House									

Symbol for activities that will be repeated during the cruise

FOLD

Fold along the dotted lines and take me with you so you don't miss any of the fun!

FOLD

IN THE SPOTLIGHT SERIES
SOAVE IT SERIES
JUMP UP! SERIES
CREATE & INVENT SERIES
OPEN HOUSE
CLUBHOUSE SERIES
STARBAND SERIES

IMPORTANT NUMBERS

Fire/Security: 7-3001
 Medical EMERGENCY: 7-3000
 Health Center: 7-1923

DINNER MENU

Animator's Palate: Taste of Alaska
 Parrot Cay: Taste of Alaska
 Triton's: Taste of Alaska
 Dining Times: 5:45pm & 8:15pm

DRINK OF THE DAY

Ooh La La (Alcoholic)
 Bora Shake (Non - Alcoholic)

WEATHER FORECAST

Saturday: Partly Sunny
 High: 56°F/13°C

Evening Attire: Semi-Formal

BUENA VISTA THEATRE



10:30 a.m. Duration: 1 hr 24 min Rating: G	12:30 p.m. Duration: 1 hr 53 min Rating: PG	2:45 p.m. Duration: 2 hr 10 min Rating: PG-13	5:15 p.m. & 8:00 p.m. Duration: 2 hr 10 min Rating: PG-13	10:45 p.m. Duration: 2 hr 30 min Rating: PG-13
--	---	---	---	--

YOUTH ACTIVITIES THEMED EXPERIENCES

CLUBHOUSE SERIES focuses on movement and features content which appeals to younger children.

STORYBOOK SERIES is designed with a strong connection to the Disney classic stories.

JUMP UP! SERIES includes large ground games & movement-oriented activities.

CREATE & INVENT SERIES will have a tactile focus allowing children to create and admire their work.

IN THE SPOTLIGHT SERIES focuses on children's stage presence with lots of activities and enthusiasm.

SOLVE IT! SERIES are less active, but will challenge children with problem/solutions-based activities.

YOUTH ACTIVITIES OPEN HOUSE

Activities for families, adults and children of all ages to enjoy together.

SHIP DIRECTORY

YOUTH ACTIVITIES

DISNEY'S OCEANEER CLUB	DECK 5, MID	9:00 AM - 12:00 MID
DISNEY'S OCEANEER LAB	DECK 5, MID	9:00 AM - 12:00 MID
EDGE	DECK 2, MID	10:00 AM - 1:00 AM
VIBE	DECK 11, MID	11:00 AM - 2:00 AM
FLOUNDER'S REEF NURSERY	DECK 5, AFT	9:00 AM - 11:00 PM

RECREATION

GOOFY'S POOL	DECK 9, MID	6:00 AM - 12:00 MID
MICKEY'S POOL	DECK 9, AFT	8:00 AM - 10:00 PM
MICKEY'S SLIDE	DECK 9, AFT	2:00 PM - 5:00 PM
MICKEY'S SPLASH ZONE	DECK 9, AFT	8:00 AM - 8:00 PM
PORT ADVENTURES DESK	DECK 3, MID	9:30 AM - 1:00 PM
QUIET COVE POOL	DECK 9, FWD	6:00 AM - 12:00 MID
VISTA FITNESS CENTER	DECK 9, FWD	6:00 AM - 10:00 PM
WIDE WORLD OF SPORTS DECK	DECK 10, FWD	24 HOURS

GENERAL INFORMATION

BUENA VISTA THEATRE	DECK 5, AFT	SHOWTIMES
DISNEY VACATION CLUB DESK	DECK 4, MID	6:00 PM - 10:00 PM
FUNNEL VISION	DECK 9, MID	SHOWTIMES
FUTURE CRUISE SALES DESK	DECK 4, MID	9:00 AM - 11:00 AM 5:00 PM - 6:00 PM 7:30 PM - 10:00 PM
GUEST SERVICES	DECK 3, MID	24 HOURS
MEDICAL HEALTH CENTER	DECK 1, FWD	9:30 AM - 11:00 AM 4:30 PM - 7:00 PM
PORT & SHOPPING DESK	DECK 3, MID	7:30 PM - 8:30 PM
PRELUDES	DECK 4, FWD	5:45 PM - 6:15 PM 8:00 PM - 8:30 PM
QUARTER MASTERS (ARCADE)	DECK 9, MID	24 HOURS
SHUTTERS PHOTO GALLERY	DECK 4, AFT	9:30 AM - 11:00 AM 7:30 PM - 11:00 PM
VISTA SPA AND SALON	DECK 9, FWD	8:00 AM - 10:00 PM
WALT DISNEY THEATRE	DECK 4, FWD	SHOWTIMES

SHOPPING

ART GALLERY	DECK 4, MID	8:30 PM - 10:00 PM
MICKEY'S MATES	DECK 4, FWD	8:00 AM - 10:00 AM 8:30 PM - 11:00 PM
RADAR TRAP (DUTY FREE)	DECK 3, FWD	8:30 PM - 11:00 PM
TREASURE KETCH	DECK 4, FWD	8:00 AM - 10:00 AM 8:30 PM - 11:00 PM

DINING & LOUNGES

BREAKFAST

BEACH BLANKET BUFFET	DECK 9, AFT	7:15 AM - 10:30 AM
GOOFY'S GALLEY	DECK 9, AFT	6:30 AM - 9:00 AM
TRITON'S (A-LA CARTE)	DECK 3, MID	8:00 AM - 9:30 AM

LUNCH

BEACH BLANKET BUFFET	DECK 9, AFT	12:00 PM - 2:00 PM
GOOFY'S GALLEY	DECK 9, AFT	10:30 AM - 7:00 PM
PINOCCHIO'S PIZZERIA	DECK 9, MID	10:30 AM - 6:00 PM
PLUTO'S DOG HOUSE	DECK 9, AFT	10:30 AM - 6:00 PM
TRITON'S	DECK 3, MID	12:00 PM - 1:30 PM

DINNER

ANIMATOR'S PALATE	DECK 4, AFT	5:45 PM & 8:15 PM
PARROT CAY	DECK 3, AFT	5:45 PM & 8:15 PM
TRITON'S	DECK 3, MID	5:45 PM & 8:15 PM
PALO* (18+)	DECK 10, AFT	6:00 PM - 9:00 PM
BEACH BLANKET (A-LA CARTE)	DECK 9, AFT	6:30 PM - 8:30 PM
PLUTO'S DOG HOUSE	DECK 9, AFT	6:00 PM - 9:30 PM

LATE NIGHT SNACKS

DIVERSIONS	DECK 3, FWD	11:00 PM - 12:00 MID
ICE CREAM AT GOOFY'S GALLEY	DECK 9, AFT	7:00 PM - 11:00 PM
PINOCCHIO'S PIZZERIA	DECK 9, MID	9:30 PM - 12:00 MID
PROMENADE LOUNGE	DECK 3, AFT	11:00 PM - 12:00 MID

ADDED FEATURES

BEVERAGE STATION	DECK 9, AFT, PORT SIDE	24 HOURS
ROOM SERVICE	DIAL 6801 OR 6802	24 HOURS

ENTERTAINMENT - LOUNGES - BARS

Adults must be 21 and older to consume alcoholic beverages.

CADILLAC LOUNGE (18+)	DECK 3, FWD	5:30 PM - 6:15 PM
COVE CAFE (18+)	DECK 9, MID	6:30 AM - 12:00 MID
DIVERSIONS (18+ AFTER 9:00 P.M.)	DECK 3, FWD	4:30 PM - 12:00 MID
INTERNET CAFE	DECK 3, AFT	24 HOURS
OUTLOOK CAFE (18+)	DECK 10, MID	6:30 AM - 12:00 MID
PINOCCHIO'S PIZZERIA	DECK 9, MID	9:30 AM - 12:00 MID
PLUTO'S DOG HOUSE	DECK 9, AFT	10:30 AM - 6:00 PM
PRELUDES	DECK 4, FWD	5:45 PM - 6:15 PM 8:00 PM - 8:30 PM
PROMENADE LOUNGE	DECK 3, AFT	8:00 AM - 12:00 MID
SIGNALS (18+)	DECK 9, FWD	9:30 AM - 10:00 PM
STUDIO SEA	DECK 4, MID	SHOWTIMES
WAVEBANDS (18+)	DECK 3, FWD	9:45 PM - 2:00 AM

Consumers who order raw or partially cooked, ready-to-eat food of animal origin, are hereby informed that the food is not sufficiently cooked to ensure its safety.

All Ashore: Approx. 11:15 a.m.
 All Aboard: 7:30 p.m.

Ship's Agent In Ketchikan

Cruise Line Agencies of Alaska, Ph: 907 225 0999 or 907 617 1217.
 1249 Tongass Avenue, Suite B, Ketchikan, AK 99901.

Character Appearances

MINNIE MOUSE

Preludes - 5:15 p.m.
 Lobby Atrium, Port Side - 10:00 p.m.

MICKEY MOUSE

Lobby Atrium, Port Side - 9:30 p.m.

PLUTO

Deck 4, Midship - 5:30 p.m. & 7:45 p.m.

DAISY DUCK

Preludes - 5:45 p.m.

CHIP & DALE

Deck 4, Midship - 6:00 p.m.
 Lobby Atrium, Starboard - 10:00 p.m.

MICKEY & MINNIE

Preludes - 7:15 p.m.

GOOFY

Deck 4, Midship - 7:15 p.m.
 Lobby Atrium, Starboard - 9:30 p.m.

DONALD & DAISY

Preludes - 7:45 p.m.



Don't forget your Camera to capture those Magical Moments!

Check here each day for Character appearances.

For detailed Character appearance information, please dial 7-PALS or see the Character Information Board in the Lobby Atrium.

Meet-and-Greets will be advertised for the length of time the line will be open. To avoid disappointment, please meet at start time of appearances.