

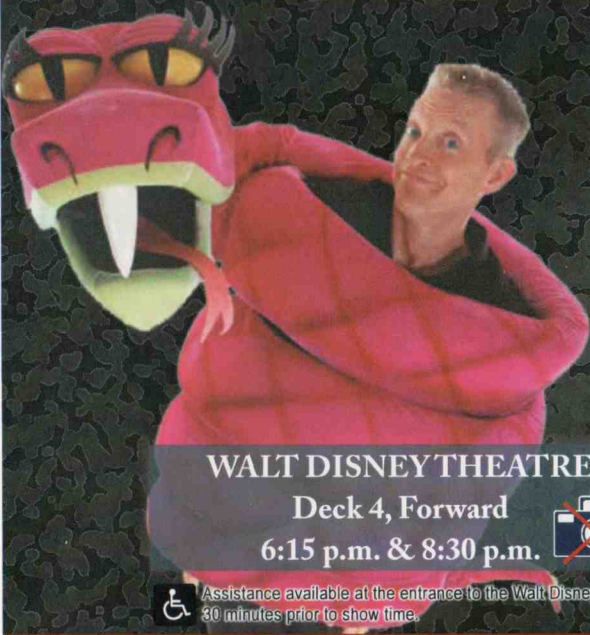
# PERSONAL NAVIGATOR

Sunrise: 4:00 a.m. Sunset: 9:58 p.m.  
Evening Attire: Cruise Casual

Wednesday: Partly Sunny High: 63°F/17°C

WEDNESDAY, MAY 29, 2013

TRACY ARM, ALASKA



## SHOWTIME

featuring


# Michael Harrison

Comedy & Ventriloquism

WALT DISNEY THEATRE

Deck 4, Forward  
6:15 p.m. & 8:30 p.m.



 Assistance available at the entrance to the Walt Disney Theatre 30 minutes prior to show time.

Tracy Arm Fjord is located in the Inside Passage approximately 45 miles south of Juneau. Cruise ships wind their way through the fjord which is located in the Tongass National Forest. The surrounding mountains are approximately 7,000 feet high and numerous waterfalls, created by melting snowcaps, can be seen along the route. The Twin Sawyer Glaciers, North Sawyer and South Sawyer, are located at the end of Tracy Arm. Wildlife is abundant and native animals include but are not limited to whales, sea lions, bald eagles, black bears, and mountain goats.

Due to the microscopic sediment or glacial flour, the water is a glacial blue.

# TRACY ARM



## DINNER MENU

Animator's Palate: Show Dinner  
Parrot Cay: Island Dinner  
Triton's: French Dinner

## DRINK OF THE DAY

Stingray (Alcoholic)  
Princess Delight (Non Alcoholic)

## IMPORTANT NUMBERS

Fire/Security: 7-3001  
Medical Emergency: 7-3000  
Health Center: 7-1923

## FUN FOR ALL AGES HIGHLIGHTS

### WAKE UP WITH DISNEY JUNIOR

*Promenade Lounge, Deck 3, Aft - 9:00 a.m.*



What happens when you experience unlimited fun with your favorite Disney Junior shows? An exciting dance party designed especially for preschoolers ages seven and under.

### ICEFIELDS AND GLACIERS IN SOUTHEAST ALASKA

*Walt Disney Theatre, Deck 4, Forward - 9:30 a.m.*

Ice has been an integral part of life in Alaska for thousands of years. Doug Jones will describe the formation, power and endurance of glacial ice and what you will see as you enter Tracy Arm, a fjord in Southeast Alaska's coastline. Researchers have been studying the Juneau Icefield for decades to learn secrets about our atmosphere captured in the annual accumulation of snow. The Stikine Icefield surrounding Tracy Arm has been surprising researchers as well and Doug will share how that work is done and what has been learned.

### DIAMOND & GEMSTONE SEMINAR

*Promenade Lounge, Deck 3, Aft - 10:00 a.m.*

Join your Shopping Guides Johan & Marissa and become an expert on Diamonds, Tanzanite & Alaskan Gems. This not to be missed presentation will save you time and money. FREE Tanzanite Earrings & a raffle to win a Tanzanite Pendant for all in attendance.

### CRUISIN' FOR TRIVIA

*Promenade Lounge, Deck 3, Aft - 11:30 a.m.*

Navigate your way through a round of questions testing your general knowledge.

### ANIMATION

*Animator's Palate, Deck 4, Aft - 12:00 p.m. - Donald*

Your Cruise Staff teach you how to draw one of your favorite Disney friends.

### FAMILY CRAFTS: ORIGAMI

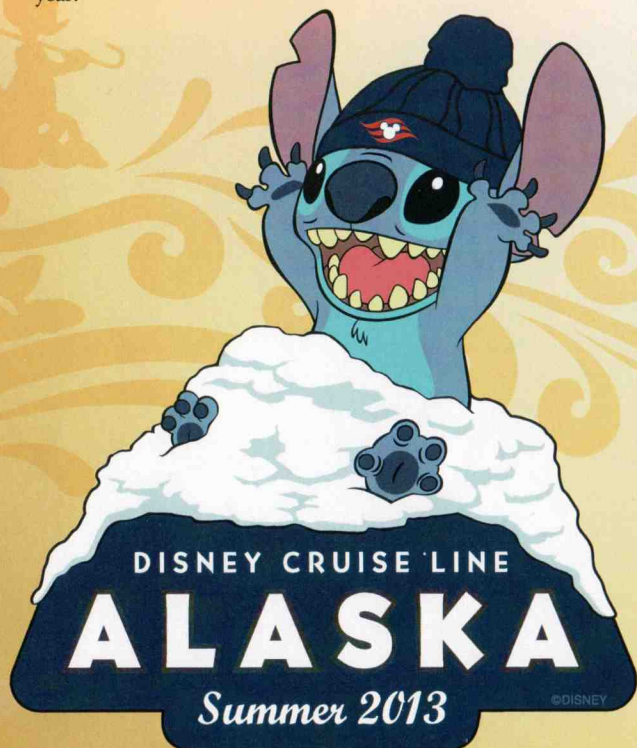
*Promenade Lounge, Deck 3, Aft - 2:45 p.m.*

Join your Cruise Staff for a fun afternoon creating an origami keepsake from your cruise vacation.

### CLUB NEW YEAR'S EVE

*Studio Sea, Deck 4, Midship - 10:30 p.m.*

Join us at this fun dance party, where we count down the hits to a new year!



## ADULT ACTIVITY HIGHLIGHTS

### VISTA SPA FITNESS CLASSES & SEMINARS

*AB Attack - Vista Spa Fitness Center - 7:00 a.m.*

*Body Sculpt Boot Camp - Vista Spa Fitness Center - 7:30 a.m.*

*Seminar: Chinese Herbs - Outlook Cafe - 10:15 a.m.*

*Secrets to a Flatter Stomach - Outlook Cafe - 11:00 a.m.*

*Complimentary Footprint Analysis - Vista Spa Fitness Center - 3:00 p.m.*

*Yoga - Vista Spa Fitness Center - 4:00 p.m.*



CLUB  
18\*21

### LUNCH

*Triton's, Deck 3, Midship - 12:00 p.m.*

### SOCIAL

*Diversions, Deck 3, Forward - 10:00 p.m.*

### DISNEY'S ART OF ENTERTAINING: SIGNATURE ENTREE

*Studio Sea, Deck 4, Midship - 10:15 a.m.*

Today we show you how to prepare Fyllo Wrapped Salmon. Join us for an entertaining look at preparing this local specialty. Recipes and tastings included.

### LIVE PIANO WITH SETH GIBSON

*Cadillac Lounge, Deck 3, Forward - 7:30 p.m., 9:30 p.m.,*

*10:30 p.m. & 11:30 p.m.*

Visit The Cadillac Lounge for an evening of piano with our specialty pianist, Seth Gibson. Don't miss the special "Country Favorites" set at 10:30 p.m.

### ROCKIN' ROWDY

*Wavebands, Deck 3, Forward - 11:00 p.m.*

Join your Club Host, Simon, as we round up the greatest classic rock and urban country hits. Featuring a bootstomping performance from the Boot Scootin' dancers to start the party.

## \$5,000 MEGA JACKPOT BINGO

**Wavebands, Deck 3, Forward**

**Card Sales - 10:45 a.m.**

**Game Starts - 11:00 a.m.**

Don't miss your chance to take home big money! 4 cash prize games and the Mega Jackpot must go! Complete Game #4 in 46 numbers and win the \$5,000 Mega Jackpot!

## MEGA RAFFLE BINGO

**Wavebands, Deck 3, Forward**

**Card Sales - 7:15 p.m.**

**Game Starts - 7:30 p.m.**

Four cash prizes and fun, DCL raffle prizes are up for grabs!

# YOUTH ACTIVITIES HIGHLIGHTS

## DINE & PLAY

A convenience for families dining at 8:15 p.m., our Youth Activities Counselors will be available at 9:15 p.m. at the entrance of Triton's, Parrot Cay and Animator's Palate dining rooms to bring registered children to join the fun in the Oceaneer Club and Oceaneer Lab.



**Deck 5, Aft (7-18500) 8:00 a.m. - 11:00 p.m.**

Infants and Toddlers can enjoy toys and activities at Flounder's Reef Nursery. Reservations are first come, first served so please stop by!



**Deck 5, Midship (7-1440) 9:00 a.m. - 12:00 a.m.**  
(3 - 12 years old)

### ALOHA LUAU

7:15 p.m.

It's party time, Hawaiian style! Come join us for a Luau experience and learn how to dance like Lilo & Stitch.

### WHERE IS TINK?

8:45 p.m.

Tinkerbell is hiding and we need your help to follow clues around Captain Hook's ship to find her.



**Deck 5, Midship (7-1445) 9:30 a.m. - 12:00 a.m.**  
(3 - 12 years old)

### PICTURE THIS

1:30 p.m.

Create your own professional picture frame and take a photo with a special guest.

### MONSTROPOLIS MOST WANTED

3:45 p.m.

Have fun while you look for clues, play puzzle games, and find out which monster stole the children's door.



**Deck 2, Midship (7-5810) 10:100 a.m. - 12:00 a.m.**  
(11 - 14 years old)

### BRAINS AND BRAWNS

5:00 p.m.

You will compete against each other to solve clues, take part in physical challenges, and reach the finish first.

### KARAOKE

11:30 p.m.

Sing the day away in our very own version of karaoke.



**Deck 11, Midship (7-18517) 11:00 a.m. - 2:00 a.m.**  
(14-17 years old)

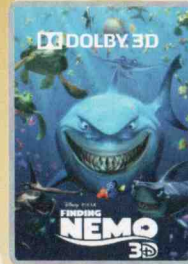
### PUMP IT UP

9:00 p.m.

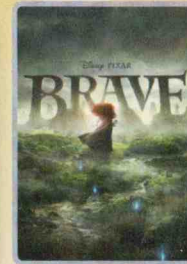
Join us in the Fitness Center for a Teen Only workout. Meet in Vibe to join in!

# BUENA VISTA THEATRE

## Today's Movies



8:30 a.m.  
Duration: 1 hr 40 min  
Rating: G



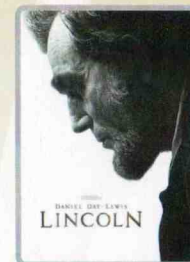
12:30 p.m.  
Duration: 1 hr 41 min  
Rating: PG



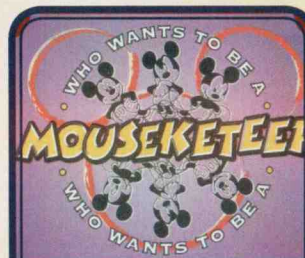
3:00 p.m.  
Duration: 1 hr 24 min  
Rating: G



5:00 p.m. & 8:00 p.m.  
Duration: 2 hr 07 min  
Rating: PG



10:45 p.m.  
Duration: 2 hr 30 min  
Rating: PG-13



### GAME SHOW

Your chance to get into the world famous hot seat and win an exclusive prize in our version of the well known television game show.

**Studio Sea,  
Deck 4, Midship,  
7:30 p.m. & 9:45 p.m.**



### ADULT VARIETY

Featuring the Physical Comedy of Adam Ace, as he entertains you in this adult exclusive show.

**WaveBands (18+),  
Deck 3, Forward,  
10:30 p.m.**

## YOUTH ACTIVITIES OPEN HOUSE

Open House is an opportunity for all to come and participate in a variety of exciting activities and free time in Flounder's Reef Nursery, Oceaneer Club, Lab, Edge and Vibe throughout the cruise. During these times secured programming will still be offered in the other venue for those looking to check their children into care.

Vibe: 11:30 a.m. - 1:30 p.m.  
Edge: 10:30 a.m. - 12:30 p.m.

Disney's Oceaneer Lab: 10:30 p.m. - 12:00 mid  
Disney's Oceaneer Club: 1:30 p.m. - 5:00 p.m.

# MORE TO ENJOY WHILE ONBOARD



## DISNEY VACATION CLUB® GROUP PREVIEW

Want to learn more about taking magical vacations year after year? Please see a Disney Vacation Club representative on Deck 4, Midship, or call 7-2805 from your stateroom phone for more information about our interactive group presentation.

## DISNEY FANTASY!

Set sail on the Disney Fantasy! Choose a 7-Night Eastern Caribbean cruise and visit St. Maarten and San Juan, Puerto Rico or St. Thomas with Port Adventures to St. John, Disney's Castaway Cay, plus three magical days at sea. Visit the Future Cruise Sales Desk for more information.

## DIAMOND & GEMSTONE SEMINAR

Promenade Lounge, Deck 3, Midship.  
Join your shopping guides to learn what makes a diamond sparkle, the rarity of Ammolite, and why Alexandrite changes color! They will give you insider tips on shopping for gemstones in Alaska. Voucher for a free Taznaite Stud Earrings and raffle to win a Tazanite Pendant for all in attendance!

## QUARTER MASTER ARCADE

Where can you fly a fighter jet, save a Princess, race NASCAR's greatest and beat bad guys all before dinner? Quarter Master is on Deck 9, Midship, where the champions play.

## SURF @ SEA

\$0.75 per minute or save money by buying blocks of time. \$55 for 100 minutes, \$100 for 250 minutes and \$150 for 500 minutes. Wireless information sheets are available at Guest Services, Deck 3, Midship and Internet Cafe, Deck 3, Aft.  
**Due to the technology involved and satellite connectivity, the onboard internet service will be noticeably slower than you may be accustomed to and might at times be interrupted or unavailable.**



Our Port Adventures desk is open to plan your day in Skagway for tomorrow. Choose the White Pass Scenic Railway as it climbs nearly 3,000 feet over 20 miles of steep grades and cliff-hanging turn, explore the beautiful scenery on one of our many hiking port adventures or get ready for an intimate Rib Boating Adventure through the Lynn Canal on our Ocean Raft Nature Adventure. See you at our desk on Deck 3, Midship.

## SHOPPING

### SOPHIA FIORI GUESS THE PRICE

Guess the price of one of our exquisite Sophia Fiori diamond rings 9:00 a.m. - 7:00 p.m. Whoever guesses closest wins a 5-carat Midnight Sapphire and a pair of Midnight Black Sapphire studs! Stop by Treasure Ketch, Deck 4, Midship. You can be the winner! Revealing at 7:30 p.m.!

### VERA BRADLEY COLLECTION!

For over 20 years, Vera Bradley has been creating bags and accessories from lovely new fabrics and styles that are introduced each season. The functionality and quality are a testament to the brand name. See the collection at Treasure Ketch.

### HAVE YOU GOT YOUR DUTY FREE ?

Visit Radar Trap to an extensive collection of premium Spirits including Remy Louis VIII, Courvoisier, Richard Hennessy, Kelt Petra and more. All at Duty Free prices.

### ART GALLERY - THOMAS KINKADE PAINTINGS

Stop by the Art Gallery today to view our selection of Thomas Kinkade Limited Edition Disney paintings. While there, see if you can find some hidden characters in the artwork. Deck 4, Midship. Our Hostess is available between 7:00 p.m. and 9:00 p.m. for any hints!

### ESSENTIAL FOSSIL COLLECTION

This seasons' collection combines color and style to create the perfect must haves from Bags, wallets and watches. Men's and Women's Collections available in Treasure Ketch. Set a trend on Sea or Land!

### TIME TO GO WITH MICHAEL KORS WATCHES

Accessories are the exclamation point of an outfit. They are what makes it complete. From Dressed up with classic details thru to Practical and Glamorous there is sure to be a timepiece in this collection to complete your look. Collection available in Treasure Ketch.



## VISTA SPA

Deck 9, Forward - Phone : 7-1465

### OXYDERMIE FACIAL

Skin Rejuvenation Facial  
\$30 off today Only

## TODAY'S SHOPPING SPECIAL

Stop by Treasure Ketch to try on the world's most memorable white diamond pieces and commemorate your cruise. Ask the hosts about 50% savings off US retail. Treasure Ketch, Deck 4, Forward.



## SAY CHEESE!

Formal portraits tonight in the Lobby Atrium, Deck 3, Midship.  
Available 5:00 p.m. - 6:15 p.m., 7:15 p.m. - 8:30 p.m. and 9:30 p.m. - 10:30 p.m.

*\*Please note that photos are available for viewing on our interactive photo kiosks approximately five hours after being taken and are only available for purchase during this cruise.*

## IMPORTANT INFORMATION

### Security Notice

All Guests (including Children) who wish to disembark or embark the ship are required to present their Key to the World card at the gangway. A photo ID is also required for those Guests who are 18 years of age or older. Guests under the age of 18 are required to have a Parent, Guardian or other responsible adult sign an authorization form at the time it is given out if they wish to go ashore unaccompanied. Authorization forms are available at the gangways and Guest Services.

### Cold and Flu Reminder

Please wash hands frequently and thoroughly, particularly before meals. Contact the Health Center by dialing 7-1923, should anyone in your party become ill.

### Inclement Weather

For the safety of all Guests, outdoor events may be changed due to unforeseen weather conditions.

### Corridor Quiet Hours

As a courtesy to all our Guests, please recognize quiet hallway hours from 10:00 p.m. til 8:00 a.m.

### Environmental Message

With Disney's commitment to the Environment please refrain from throwing anything over the Ship's side. Thank you.

### No Reserved Seats Policy

As a courtesy to all Guests we kindly advise that the saving of seats is not permitted in the Walt Disney Theatre, and the saving of the sun loungers is not permitted on Deck 9 and 10. Items left unattended will be returned to lost and found at Guest Services, Deck 3, Midship.

### Smoking

For the comfort of our Guests the following open deck areas on the Starboard Side are designated as Smoking areas: Deck 4, Starboard side from 6:00 p.m. to 6:00 a.m. ONLY, Deck 9, Forward Starboard side at Quiet Cove and Deck 10, Starboard side. Smoking is prohibited in all Guest staterooms. Guests found smoking in their staterooms will be charged a \$250 stateroom recovery fee. Electronic cigarettes may only be used in designated smoking areas.

### Sunscreen Advisory

Don't forget to apply sunscreen and insect repellent when going ashore.

### Walt Disney Theatre

Theatrical performances may use artificial fog, strobe lights, pyrotechnics and other special effects. For the safety of our performers and the comfort of those around you, the use of any photography or video recording device or any electronic equipment is prohibited.

### Verandah Safety

Please do not leave any combustible materials on your balcony when not present in your stateroom for safety reasons.

Morning	8:30	8:45	9:00	9:15	9:30	9:45	10:00	10:15	10:30	10:45	11:00	11:15	11:30	11:45	12:00	12:15	12:30	12:45	1:00	1:15	1:30		
<b>BUENA VISTA THEATRE</b>	Finding Nemo (G)  Duration: 1 Hours 40 Minutes															Brave (PG) Duration: 1 Hours 41 Minutes							
<b>CHARACTER</b>	For detailed character appearances, call 7-PALS or refer to the Character Screen in the Lobby Atrium.																						
<b>FUN FOR ALL AGES</b>	Promenade Lounge			Icefields and Glaciers in Southeast Alaska Alaska Naturalist Presentation Walt Disney Theatre				The Disney Wheel Diversions		Bingo Pre Sales		Wavebands			\$5,000 Mega Jackpot			Animation - Donald Animator's Palate			TRACY ARM VIEW AND NARRATION Decks 4, 9 and 10 Narration will also be broadcast on Channel 251		
	Board Games available in Diversions and Promenade Lounge						Gemstone Seminar Promenade Lounge			Walk A Mile Meet at Preludes			Cruisin' for Trivia Promenade Lounge										
<b>ADULTS</b>	Friends of Bill W. Cadillac Lounge		Walk a Mile Meet at Preludes		Disney's Art of Entertaining Studio Sea - The Entree				TV Tunes Trivia Diversions			Club 18*21 - Lunch Triton's			Singles' Lunch Triton's								
	Books and magazines available in Cove Cafe						Seminar: Chinese Herbs Outlook Cafe			Secrets to a Flatter Stomach Outlook Cafe													
<b>VIBE</b> 14-17 YEARS OLD																Open House							
<b>EDGE</b> 11-14 YEARS OLD																Open House							
<b>OCEANEER LAB</b> 3-12 YEARS OLD							Shake It Up!			Animation Antics			Lunch			Transition  Picture This							
<b>OCEANEER CLUB</b> 3-12 YEARS OLD							Brother Bear						Lunch			Transition Base Camp Open House							
<b>OUT AND ABOUT</b>							Open House Edge																

Afternoon	1:45	2:00	2:15	2:30	2:45	3:00	3:15	3:30	3:45	4:00	4:15	4:30	4:45	5:00	5:15	5:30	5:45	6:00	6:15	6:30	6:45										
<b>BUENA VISTA THEATRE</b>	Beauty and the Beast (G) Duration: 1 Hours 24 Minutes											Oz The Great and Powerful (PG) Duration: 2 Hours 07 Minutes																			
<b>CHARACTER</b>	For detailed character appearances, call 7-PALS or refer to the Character Screen in the Lobby Atrium.											Mickey Lobby, Port Side		Minnie Lobby, Port Side																	
<b>FUN FOR ALL AGES</b>	TRACY ARM VIEW AND NARRATION Decks 4, 9 and 10 Narration will also be broadcast on Channel 251											Family Time Tunes with Sonic Groove Promenade Lounge			Piano Favorites with Drew Cavendish Lobby Atrium			Showtime: The Comedy and Ventriloquism of Michael Harrison Walt Disney Theatre													
	Crafts: Origami Creations Promenade Lounge				DCL Trivia Promenade Lounge																										
<b>ADULTS</b>	Informal Bridge Play Diversions			Footprint Analysis Vista Spa Fitness Cntr				Yoga Vista Spa Fitness Cntr			Wii Home Run Derby Diversions																				
	Books and magazines available in Cove Cafe																														
<b>VIBE</b> 14-17 YEARS OLD	Wii Challenge						Craft Time			Sports Deck Fun																					
<b>EDGE</b> 11-14 YEARS OLD	Craft Time						Just Dance			Brains and Brawns																					
<b>OCEANEER LAB</b> 3-12 YEARS OLD	Picture This			Monstropolis Most Wanted						Dinner																					
<b>OCEANEER CLUB</b> 3-12 YEARS OLD	Base Camp Wide World of Sports  Open House						Transition			Dinner																					
<b>OUT AND ABOUT</b>							Brains and Brawns Edge																								

Evening	7:00	7:15	7:30	7:45	8:00	8:15	8:30	8:45	9:00	9:15	9:30	9:45	10:00	10:15	10:30	10:45	11:00	11:15	11:30	11:45	12:00	
<b>BUENA VISTA THEATRE</b>	Oz The Great and Powerful (PG) - Dolby 3D Duration: 2 Hours 07 Minutes															Lincoln (PG-13) Duration: 2 Hours 30 Minutes						
<b>CHARACTER</b>	Chip & Dale Lobby, Starboard		Koda Lobby, Port Side			Pluto Lobby, Port Side			Donald Lobby, Starboard			For detailed character appearances, call 7-PALS or refer to the Character Screen in the Lobby Atrium.										
<b>FUN FOR ALL AGES</b>	Bingo Pre Sales Wavebands		Mega Raffle Wavebands		BINGO			Showtime: The Comedy and Ventriloquism of Michael Harrison Walt Disney Theatre			Who Wants to be a Mouseketeer? Studio Sea			Club BENTONS Studio Sea								
	Pin Trading Station Preludes >8:15 p.m.		Who Wants to be a Mouseketeer? Studio Sea			Game Show: The Disney Wheel Diversions			Legendary Singers with Sonic Groove Promenade Lounge			Ballroom with Sonic Groove Promenade Lounge										
<b>ADULTS</b>	Music & Martinis with Seth Gibson Cadillac Lounge						Music Mashup with The Signed Wavebands			Variety: Adam Ace Wavebands			Rockin' Rowdy Wavebands			The Signed Live Wavebands						
				Evening Standards Cadillac Lounge			Club 18*21 - Social Diversions			Country Favorites Cadillac Lounge			Late Night Piano Cadillac Lounge									
<b>VIBE</b> 14-17 YEARS OLD	Gender Wars						Pump It Up			Sports Deck Fun						Camp Out						
<b>EDGE</b> 11-14 YEARS OLD	Sports Deck Fun						Ice Cream Social			Sports Deck Fun						Karaoke						
<b>OCEANEER LAB</b> 3-12 YEARS OLD	Gasses in Action			Transition  Who Wants To Be A Mouseketeer			Transition			Transition			Youth Activities Open House "Animation Cells" 10:45 p.m. - 11:30 p.m.									
<b>OCEANEER CLUB</b> 3-12 YEARS OLD	Aloha Luau			Where is Tink?			Memory Wall			Magic Show												
<b>OUT AND ABOUT</b>	Sports Deck Fun Edge												Karaoke Edge									

Symbol for activities that will be repeated during the cruise

FOLD

Fold along the dotted lines and take me with you so you don't miss any of the fun!

FOLD

IN THE SPOTLIGHT SERIES  
 SOLVE IT! SERIES

JUMP UP! SERIES  
 CREATE & INVENT SERIES  
 OPEN HOUSE

CLUBHOUSE SERIES  
 STORYBOOK SERIES

IMPORTANT NUMBERS

Fire/Security: 7-3001  
 Medical EMERGENCY: 7-3000  
 Health Center: 7-1923

DINNER MENU

Animator's Palate: Show Dinner  
 Parrot Cay: Island Dinner  
 Triton's: French Dinner

Dining Times: 5:45pm & 8:15pm

DRINK OF THE DAY

Stingray (Alcoholic)  
 Princess Delight (Non-Alcoholic)

WEATHER FORECAST

Wednesday:  
 Partly Sunny  
 High: 63°F/17°C

Evening Attire: Cruise Casual

# BUENA VISTA THEATRE



8:30 a.m. Duration: 1 hr 40 min Rating: G	12:30 p.m. Duration: 1 hr 41 min Rating: PG	3:00 p.m. Duration: 1 hr 24 min Rating: G	5:00 p.m. & 8:00 p.m. Duration: 2 hr 07 min Rating: PG	10:45 p.m. Duration: 2 hr 30 min Rating: PG-13
---	---	---	--	--

## YOUTH ACTIVITIES THEMED EXPERIENCES

**CLUBHOUSE SERIES** focuses on movement and features content which appeals to younger children.

**STORYBOOK SERIES** is designed with a strong connection to the Disney classic stories.

**JUMP UP! SERIES** includes large ground games & movement-oriented activities.

**CREATE & INVENT SERIES** will have a tactile focus allowing children to create and admire their work.

**IN THE SPOTLIGHT SERIES** focuses on children's stage presence with lots of activities and enthusiasm.

**SOLVE IT! SERIES** are less active, but will challenge children with problem/solutions-based activities.

**YOUTH ACTIVITIES OPEN HOUSE**

Activities for families, adults and children of all ages to enjoy together.

### SHIP DIRECTORY

#### YOUTH ACTIVITIES

DISNEY'S OCEANEER CLUB	DECK 5, MID	9:00 AM - 12:00 MID
DISNEY'S OCEANEER LAB	DECK 5, MID	9:30 AM - 12:00 MID
EDGE	DECK 2, MID	10:00 AM - 12:00 MID
VIBE	DECK 11, MID	11:00 AM - 2:00 AM
FLOUNDER'S REEF NURSERY	DECK 5, AFT	8:00 AM - 11:00 PM

#### RECREATION

GOOFY'S POOL	DECK 9, MID	6:00 AM - 12:00 MID
MICKEY'S POOL	DECK 9, AFT	8:00 AM - 10:00 PM
MICKEY'S SPLASH ZONE	DECK 9, AFT	8:00 AM - 8:00 PM
PORT ADVENTURES DESK	DECK 3, MID	9:30 AM - 1:00 PM
		7:00 PM - 8:30 PM
QUIET COVE POOL	DECK 9, FWD	6:00 AM - 12:00 MID
VISTA FITNESS CENTER	DECK 9, FWD	6:00 AM - 10:00 PM
WIDE WORLD OF SPORTS DECK	DECK 10, FWD	24 HOURS

#### GENERAL INFORMATION

BUENA VISTA THEATRE	DECK 5, AFT	SHOWTIMES
DISNEY VACATION CLUB DESK	DECK 4, MID	9:00 AM - 11:00 AM 5:00 PM - 10:00 PM
FUNNEL VISION	DECK 9, MID	SHOWTIMES
FUTURE CRUISE SALES DESK	DECK 4, MID	9:00 AM - 11:30 AM 5:00 PM - 6:00 PM 7:30 PM - 10:00 PM
GUEST SERVICES	DECK 3, MID	24 HOURS
MEDICAL HEALTH CENTER	DECK 1, FWD	9:30 AM - 11:00 AM 4:30 PM - 7:00 PM
PORT & SHOPPING DESK	DECK 3, MID	7:30 PM - 8:30 PM
PRELUDES	DECK 4, FWD	5:45 PM - 6:15 PM 8:00 PM - 8:30 PM
QUARTER MASTERS (ARCADE)	DECK 9, MID	24 HOURS
SHUTTERS PHOTO GALLERY	DECK 4, AFT	10:00 AM - 11:00 PM
VISTA SPA AND SALON	DECK 9, FWD	8:00 AM - 10:00 PM
WALT DISNEY THEATRE	DECK 4, FWD	SHOWTIMES

#### SHOPPING

ART GALLERY	DECK 4, MID	1:00 PM - 4:00 PM 7:00 PM - 9:00 PM
MICKEY'S MATES	DECK 4, FWD	9:00 AM - 10:30 PM
RADAR TRAP (DUTY FREE)	DECK 3, FWD	4:00 PM - 10:00 PM
TREASURE KETCH	DECK 4, FWD	9:00 AM - 10:30 PM

### DINING & LOUNGES

#### BREAKFAST

BEACH BLANKET BUFFET	DECK 9, AFT	7:00 AM - 10:15 AM
GOOFY'S GALLEY	DECK 9, AFT	6:30 AM - 9:00 AM
TRITON'S (A-LA CARTE)	DECK 3, MID	7:30 AM - 9:30 AM

#### LUNCH

BEACH BLANKET BUFFET	DECK 9, AFT	12:00 PM - 2:00 PM
GOOFY'S GALLEY	DECK 9, AFT	10:30 AM - 7:00 PM
PINOCCHIO'S PIZZERIA	DECK 9, MID	10:30 AM - 6:00 PM
PLUTO'S DOG HOUSE	DECK 9, AFT	10:30 AM - 6:00 PM
TRITON'S	DECK 3, MID	12:00 PM - 1:30 PM

#### DINNER

ANIMATOR'S PALATE	DECK 4, AFT	5:45 PM & 8:15 PM
PARROT CAY	DECK 3, AFT	5:45 PM & 8:15 PM
TRITON'S	DECK 3, MID	5:45 PM & 8:15 PM
PALO* (18+)	DECK 10, AFT	6:00 PM - 9:00 PM
BEACH BLANKET (A-LA CARTE)	DECK 9, AFT	6:30 PM - 8:30 PM
PLUTO'S DOG HOUSE	DECK 9, AFT	6:00 PM - 9:30 PM

#### LATE NIGHT SNACKS

DIVERSIONS	DECK 3, FWD	11:00 PM - 12:00 MID
ICE CREAM AT GOOFY'S GALLEY	DECK 9, AFT	7:00 PM - 11:00 PM
PINOCCHIO'S PIZZERIA	DECK 9, MID	9:30 PM - 12:00 MID
PROMENADE LOUNGE	DECK 3, AFT	11:00 PM - 12:00 MID

#### ADDED FEATURES

BEVERAGE STATION	DECK 9, AFT, PORT SIDE	24 HOURS
ROOM SERVICE	DIAL 6801 OR 6802	24 HOURS

#### ENTERTAINMENT - LOUNGES - BARS

Adults must be 21 and older to consume alcoholic beverages.

CADILLAC LOUNGE (18+)	DECK 3, FWD	5:30 PM - 6:15 PM
COVE CAFE (18+)	DECK 9, MID	6:30 AM - 12:00 MID
DIVERSIONS (18+ AFTER 9:00 P.M.)	DECK 3, FWD	11:00 AM - 12:00 MID
INTERNET CAFE	DECK 3, AFT	24 HOURS
OUTLOOK CAFE (18+)	DECK 10, MID	6:30 AM - 12:00 MID
PINOCCHIO'S PIZZERIA	DECK 9, MID	9:30 AM - 12:00 MID
PLUTO'S DOG HOUSE	DECK 9, AFT	10:30 AM - 6:00 PM
PRELUDES	DECK 4, FWD	5:45 PM - 6:15 PM 8:00 PM - 8:30 PM
PROMENADE LOUNGE	DECK 3, AFT	8:00 AM - 12:00 MID
SIGNALS (18+)	DECK 9, FWD	9:30 AM - 10:00 PM
STUDIO SEA	DECK 4, MID	SHOWTIMES
WAVEBANDS (18+)	DECK 3, FWD	9:45 PM - 2:00 AM

Consumers who order raw or partially cooked, ready-to-eat food of animal origin, are hereby informed that the food is not sufficiently cooked to ensure its safety.

## Character Appearances

### PLUTO

Lobby Atrium, Starboard - 5:15 p.m.  
 Lobby Atrium, Port Side - 9:30 p.m.

### MICKEY MOUSE

Lobby Atrium, Port Side - 5:15 p.m., 7:15 p.m. & 10:00 p.m.

### GOOFY

Lobby Atrium, Starboard - 5:45 p.m. & 9:30 p.m.

### MINNIE MOUSE

Lobby Atrium, Port Side - 5:45 p.m. & 7:45 p.m.

### CHIP & DALE

Lobby Atrium, Starboard - 7:15 p.m.

### KODA

Lobby Atrium, Port Side - 7:45 p.m.

### DONALD DUCK

Lobby Atrium, Starboard - 10:00 p.m.



Don't forget your Camera to capture those Magical Moments!

Check here each day for Character appearances.

For detailed Character appearance information, please dial 7-PALS or see the Character Appearance Board in the Lobby Atrium.

Meet-and-Greets will be advertised for the length of time the line will be open. To avoid disappointment, please meet at start time of appearances.