

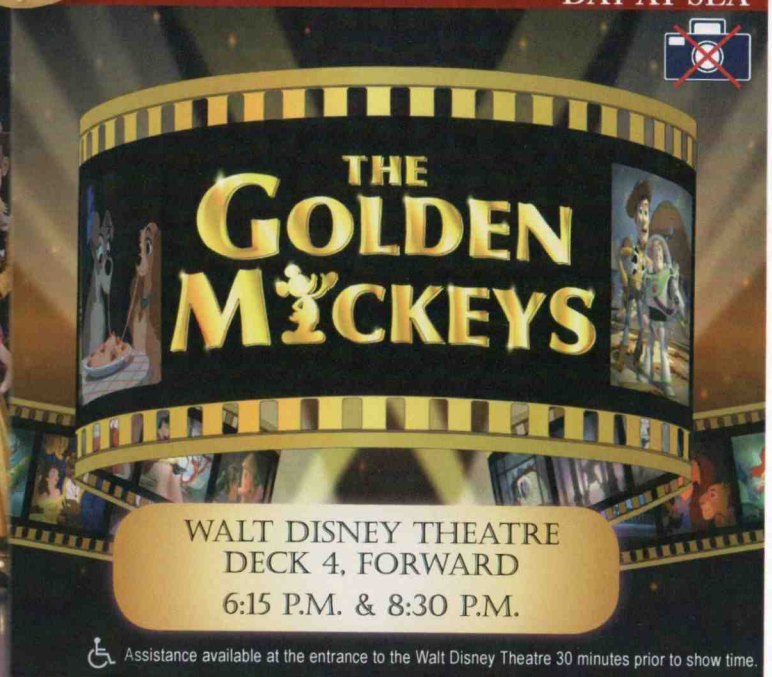
# PERSONAL NAVIGATOR

Sunrise: 5:27 a.m. Sunset: 9:51 p.m.  
Evening Attire: Formal

Tuesday: Scattered Showers High: 58°F/15°C

TUESDAY, MAY 28, 2013

DAY AT SEA



Assistance available at the entrance to the Walt Disney Theatre 30 minutes prior to show time.

## Disney WONDER Fun Facts

**Tonnage:** 83,308 gross, 53.899 net

**Length Overall:** 294m / 964ft

(height of Eiffel Tower is 986ft)

**Maximum Speed:** 26 knots (30 miles per hour)

### Important Dates

**Keel Laid:** May 15, 1997

**Launch Date:** July 14, 1999

**Inaugural Cruise:** October 1, 1999

\* The Wonder was built by a process called Jumboisation (in 2 separate sections) in Italy at the Fincantieri Maghera Shipyard (Stern) and the Fincantieri Ancone Shipyard (Bow). The joint of the ship is just in front of Triton's.

\* The anchor of the Disney Wonder weighs 34,250 lbs (15,569 kg) - the same weight as three elephants.

\* Over 50 nationalities make up the 960 Crew members onboard.

\* Steamboat Willie stands proudly 10 ft tall on the bow of the ship. There are other characters in the artwork around him.

\* Donald and his nephew Huey hang painting the finishing touches on the stern.



### CAPTAIN'S WELCOME RECEPTION

Enjoy a cocktail and mingle with the officers of the Disney Wonder. There's also an exclusive photo opportunity with Captain Thord.  
**Lobby Atrium, Port side, Deck 3, Midship, 5:00 p.m. & 7:30 p.m.**

### Don't Miss:

#### Wake up with Disney Junior

Promenade Lounge, Deck 3, Aft - 8:30 a.m.

What happens when you experience unlimited fun with your favorite Disney Junior shows? An exciting dance party designed especially for preschoolers ages seven and under.

#### Alaskan Naturalist Presentation

Walt Disney Theatre, Deck 4, Forward - 11:30 a.m. & 2:00 p.m.

Join Alaskan Naturalist Doug Jones and get an insight into Alaska with his presentations 'Into The Wild' at 11:30 a.m. and 'Alaska's Bears' at 2:00 p.m.

#### Art of The Theme Show Tour (18+)

Palo, Deck 10, Aft - 3:15 p.m.

Join us on a guided ship tour and discover the key ingredients that make the Disney Wonder.



#### TIME ZONE CHANGE

Remember to turn your clocks **BACK 1 HOUR** upon retiring on **TUESDAY** evening, or first thing **WEDNESDAY** morning.



Please check your tour tickets for meeting times and locations. Visit the Port Adventures Desk, Deck 3, Midship for any questions.

### DINNER MENU

Animator's Palate: Golden Mickeys  
Parrot Cay: Golden Mickeys  
Triton's: Golden Mickeys

### DRINK OF THE DAY

Ocean Pearl (Alcoholic)  
Passion Creme Fizz (Non Alcoholic)

### IMPORTANT NUMBERS

Fire/Security: 7-3001  
Medical Emergency: 7-3000  
Health Center: 7-1923



# FUN FOR ALL AGES HIGHLIGHTS

## JACK-JACK'S INCREDIBLE DIAPER DASH

*Lobby Atrium, Deck 3, Midship - 9:30 a.m.*

Calling all baby cruisers! The Disney Wonder's babies take to the mat to see who's the fastest crawler of the seven seas! Register your baby from 9:15 a.m. - 9:30 a.m.

## ALASKA PORT & SHOPPING SHOW

*Buena Vista Theatre, Decks 5, Aft - 1:30 p.m.*

Join Shopping Guides Johan & Marissa to learn about the incredible shopping ashore this cruise! Everything will be covered from Diamonds to Totem Poles. FREE Charm Bracelet & Raffle to win a Diamond Pendant for all in attendance! FREE Ship Charm for the 1st 150 guest in attendance!

## DISNEY TUNES TRIVIA LIVE

*Promenade Lounge, Deck 3, Aft - 3:00 p.m.*

Determine just how well you know your Disney Tunes with your Cruise Staff.

## FAMILY SUPERSTAR KARAOKE

*Studio Sea, Deck 4, Midship - 3:30 p.m. & 10:15 p.m.*

Join your Cruise Staff in Studio Sea tonight and sing along to your favorite song - fun for everyone.

## CAPTAIN'S WELCOME RECEPTION

*Lobby Atrium, Deck 3, Midship - 5:00 p.m. & 7:30 p.m.*

Enjoy a cocktail with the Officers of this beautiful Disney Cruise Line ship then meet the Captain have a photograph taken with him.

## GAME SHOW: THE FEUD

*Studio Sea, Deck 4, Midship - 7:30 p.m.*

"Survey Says" you'll have a fantastic time with our version of a classic game.

## THE GOLDEN MICKEYS AFTER PARTY

*Studio Sea, Deck 4, Midship - 9:30 p.m.*

Join DJ Wendell and your Cruise Staff for the awards celebration after party, featuring great dance music for the entire family.



# ADULT ACTIVITY HIGHLIGHTS

## VISTA SPA FITNESS CLASSES & SEMINARS



*Sunrise Stretch - Vista Spa Fitness Center - 7:00 a.m.*

*Body Sculpt Boot Camp - Vista Spa Fitness Center - 7:30 a.m.*

*Complimentary Footprint Analysis - Vista Spa Fitness Center - 9:30 a.m.*

*Introduction to Acupuncture - Diversions - 10:15 a.m.*

*Detox for Health & Weight Loss - Outlook Cafe - 11:00 a.m.*

*How to Increase Your Metabolism - Outlook Cafe - 1:00 p.m.*

*Arthritis and Back Pain Solutions - Outlook Cafe - 3:15 p.m.*

*Pilates - Vista Spa Fitness Center - 5:00 p.m.*

## TASTING CLASSES

*Wine Tasting (21+) - Cadillac Lounge - 12:00 p.m.*

*Whiskey Tasting (21+) - Outlook Cafe - 10:30 p.m.*

Please make reservations for tastings at Guest Services for a nominal fee. Tasting Seminars are only for Guests 21 and Older.

## LUNCH

*Parrot Cay, Deck 3, Aft - 12:30 p.m.*

## SOCIAL

*Diversions, Deck 3, Forward - 10:00 p.m.*

## DISNEY'S ART OF ENTERTAINING: THE APPETIZER

*Studio Sea, Deck 4, Midship - 9:45 a.m.*

Our chef cooks up the perfect start to any dinner party in this delicious demonstration. Recipes and tastings included!

## ART OF THE THEME SHOW TOUR (18+)

*Palo, Deck 10, Aft - 3:15 p.m.*

Join us on a guided ship tour and discover the key ingredients that make the Disney Wonder.

## DISCO LEGENDS

*Wavebands, Deck 3, Forward - 10:30 p.m.*

Put on your platform shoes and hit the dance floor as we catch a disco fever. Our '70s dance party will have you spinning like a disco ball.

# DIAMOND JACKPOT BINGO

**Wavebands, Deck 3, Forward**

**Card Sales - 10:30 a.m.**

**Game Starts - 10:45 a.m.**

Join us for 4 cash prize games and your chance to win a Diamond and Sapphire Pendant! Everyone attending will also receive a voucher to collect a free Diamonds International charm bracelet!

# VISTA SPA JACKPOT BINGO

**Wavebands, Deck 3, Forward**

**Card Sales - 3:45 p.m.**

**Game Starts - 4:00 p.m.**

Four CASH prizes to be won! Plus great spa prizes that will pamper you, including a mini facial and massages all courtesy of the Vista Spa and Salon. Serenity now!



# YOUTH ACTIVITIES HIGHLIGHTS

## DINE & PLAY

A convenience for families dining at 8:15 p.m., our Youth Activities Counselors will be available at 9:15 p.m. at the entrance of Triton's, Parrot Cay and Animator's Palate dining rooms to bring registered children to join the fun in the Oceaneer Club and Oceaneer Lab.



**Deck 5, Aft (7-18500) 9:00 a.m. - 11:00 p.m.**

Infants and Toddlers can enjoy toys and activities at Flounder's Reef Nursery. Reservations are first come, first served so please stop by!



**Deck 5, Midship (7-1440) 9:00 a.m. - 12:00 a.m.**  
(3 - 12 years old)

## MOUSEKETEER TRAINING

12:15 p.m.

Take part in training exercises to become an Official Mouse-keteer.

## STORY TIME WITH BELLE

2:15 p.m.

Come and listen to one of your favorite Disney stories.



**Deck 5, Midship (7-1445) 9:00 a.m. - 12:00 a.m.**  
(3 - 12 years old)

## FLUBBER

10:45 a.m.

Encounter solid, liquid, gas and make "Flubber-like Goo".

## RATATOUILLE COOKING SCHOOL

3:30 p.m.

Join our Ratatouille Cooking School for baking fun! Make new friends and bake your own Chocolate Chip Cookies!



**Deck 2, Midship (7-5810) 10:00 a.m. - 12:00 a.m.**  
(11 - 14 years old)

## ANIMATION CELLS

1:00 p.m.

Learn what it takes to be a Disney Animator, then put your new skills to the test as you create your very own animation cell.



**Deck 11, Midship (7-18517) 11:00 a.m. - 2:00 a.m.**  
(14-17 years old)

## GLOW JAM

12:00 mid

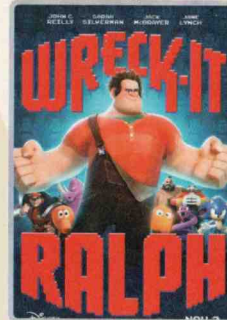
Receive your very own glow bracelet or necklace and join us for a glow-in-the-dark party with lots of games, fun and dancing for all.

# BUENA VISTA THEATRE

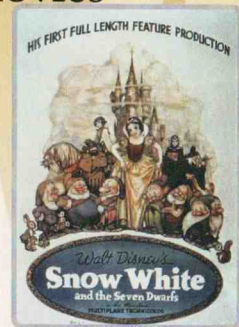
## Today's Movies



10:30 a.m.  
Duration: 1 hr 40 min  
Rating: G



5:00 p.m. & 8:00 p.m.  
Duration: 1 hr 47 min  
Rating: PG



3:00 p.m.  
Duration: 1 hr 23 min  
Rating: G



10:30 p.m.  
Duration: 2 hr 22 min  
Rating: PG-13



## FAMILY CABARET

Featuring the Physical Comedy of Adam Ace, as he entertains you in this fun filled family show.

*WaveBands,  
Deck 3, Forward,  
7:30 p.m.*



## ADULT CABARET

Featuring the Comedy & Ventriloquism of Michael Harrison, as he entertains you in this adult exclusive show.

*WaveBands (18+),  
Deck 3, Forward,  
10:30 p.m.*

## YOUTH ACTIVITIES OPEN HOUSE

Open House is an opportunity for all to come and participate in a variety of exciting activities and free time in Flounder's Reef Nursery, Oceaneer Club, Lab, Edge and Vibe throughout the cruise. During these times secured programming will still be offered in the other venue for those looking to check their children into care.

Vibe: 11:00 a.m. - 1:00 p.m.  
Edge: 10:00 a.m. - 12:00 p.m.

Disney's Oceaneer Club: 9:00 a.m. - 10:15 a.m.



# MORE TO ENJOY WHILE ONBOARD

## DISNEY VACATION CLUB® GROUP PREVIEW

Want to learn more about taking magical vacations year after year? Please see a Disney Vacation Club representative on Deck 4, Midship, or call 7-2805 from your stateroom phone for more information about our interactive group presentation.

## DISNEY FANTASY!

Set sail on the Disney Fantasy! Choose a 7-Night Eastern Caribbean cruise and visit St. Maarten and San Juan, Puerto Rico or St. Thomas with Port Adventures to St. John, Disney's Castaway Cay, plus three magical days at sea. Visit the Future Cruise Sales Desk for more information.

## NOT TO BE MISSED ALASKA SHOPPING EVENTS

### Alaska Port & Shopping Show

1:30 p.m. - The Buena Vista Theater, Deck 5 Aft.

Learn about the incredible shopping in Alaska. Everything will be covered, from Diamonds to T-shirts, Totem Poles to Salmon. FREE Alaskan Charm Bracelet & Raffle to win a Diamond Pendant!

### Fine Watch Seminar

4:00 p.m. - The Promenade Lounge, Deck 3, Midship

Learn the difference between a \$10 watch & a \$10,000 watch!

## QUARTER MASTER ARCADE

Where can you fly a fighter jet, save a Princess, race NASCAR's greatest and beat bad guys all before dinner? Quarter Master is on Deck 9, Midship, where the champions play.

## SURF @ SEA

\$0.75 per minute or save money by buying blocks of time. \$55 for 100 minutes, \$100 for 250 minutes and \$150 for 500 minutes. Wireless information sheets are available at Guest Services, Deck 3, Midship and Internet Cafe, Deck 3, Aft.

## EARLY FLIGHT DEPARTURES

Guests with flights departing prior to 12:30 p.m. are kindly asked to notify Guest Services located on Deck 3, Midship, no later than 12:00 noon on Saturday.

## ONBOARD AIRLINE CHECK IN

Stop by Guest Services before 11:00 p.m. on Friday to see if you are eligible for Onboard Airline Check In.



Whales and eagles and bears, oh my! Be sure to check out some of our wildlife adventures where you might be able to spot some of these animals. And for those a little more daring, a snorkeling trip might be for you. Be sure to ask all your questions to our Port Adventures team on Deck 3, Midship.

## SHOPPING

### DESIGNER WATCHES

Visit Treasure Ketch, Deck 4, Midship and choose from a wide assortment of designer watches including Fossil and Kenneth Cole.

### CHAMILIA JEWELRY

Create and personalize your own Chamilia Bracelet. Choose from a selection of sterling silver beads with many of them featuring your favorite Disney Characters.

### GREAT OFFERS ONBOARD!

Get a Disney Cruise Line ship plush for \$24.95 when you spend \$25 or more and a Disney Cruise Line watch for \$14.95 when you spend \$30 or more. Promotion available in Treasure Ketch and Mickey's Mates.

### SOPHIA FIORI DIAMOND TRUNK SHOW WITH CAROL & GILBERT

Sophia Fiori, Hollywood's first choice in diamonds has boarded the Disney Wonder to premier their new collection of white & colored diamonds worn at the Oscars, Golden Globes, Emmy and Grammy Awards. Stop by Treasure Ketch on Deck 4 and view this stunning collection. 50% below U.S. retail.

### GUESS THE CARAT!

Guess the carat weight of one of our exquisite Sophia Fiori diamond rings, 9:00 a.m. - 7:00 p.m. Whoever guesses closest wins a 5-carat midnight sapphire and a pair of midnight black sapphire studs! Stop by Treasure Ketch, Deck 4. You could be the winner!



## VISTA SPA

Deck 9, Forward - Phone: 7-1465

### IONTHERMIE SUPER DETOX

Course of 3, save \$166

Lose 1 - 8 inches per session

## TODAY'S SHOPPING SPECIAL

Stop by Treasure Ketch to try on the world's most memorable white diamond pieces and commemorate your cruise. Ask the hosts about 50% savings off US retail. Treasure Ketch, Deck 4, Forward.



## SAY CHEESE!

Formal portraits tonight in the Lobby Atrium, Deck 3, Midship. Available 5:00 p.m. - 6:00 p.m., 7:15 p.m. - 8:15 p.m. and 9:30 p.m. - 10:30 p.m.

*\*Please note that photos are available for viewing on our interactive photo kiosks approximately five hours after being taken and are only available for purchase during this cruise.*

©Disney 05-28-2013

## IMPORTANT INFORMATION

### Security Notice

All Guests (including Children) who wish to disembark or embark the ship are required to present their Key to the World card at the gangway. A photo ID is also required for those Guests who are 18 years of age or older. Guests under the age of 18 are required to have a Parent, Guardian or other responsible adult sign an authorization form at the time it is given out if they wish to go ashore unaccompanied. Authorization forms are available at the gangways and Guest Services.

### Cold and Flu Reminder

Please wash hands frequently and thoroughly, particularly before meals. Contact the Health Center by dialing 7-1923, should anyone in your party become ill.

### Inclement Weather

For the safety of all Guests, outdoor events may be changed due to unforeseen weather conditions.

### Corridor Quiet Hours

As a courtesy to all our Guests, please recognize quiet hallway hours from 10:00 p.m. til 8:00 a.m.

### Environmental Message

With Disney's commitment to the Environment please refrain from throwing anything over the Ship's side. Thank you.

### No Reserved Seats Policy

As a courtesy to all Guests we kindly advise that the saving of seats is not permitted in the Walt Disney Theatre, and the saving of the sun loungers is not permitted on Deck 9 and 10. Items left unattended will be returned to lost and found at Guest Services, Deck 3, Midship.

### Smoking

For the comfort of our Guests the following open deck areas are designated as Smoking areas: Deck 4, Starboard side from 6:00 p.m. to 6:00 a.m. ONLY, Deck 9, Forward Starboard side at Quiet Cove and Deck 10, Starboard side. Smoking is prohibited in all Guest staterooms. Guests found smoking in their staterooms will be charged a \$250 stateroom recovery fee. Electronic cigarettes may only be used in designated smoking areas.

### Sunscreen Advisory

Don't forget to apply sunscreen and insect repellent when going ashore.

### Walt Disney Theatre

Theatrical performances may use artificial fog, strobe lights, pyrotechnics and other special effects. For the safety of our performers and the comfort of those around you, the use of any photography or video recording device or any electronic equipment is prohibited.

### Verandah Safety

Please do not leave any combustible materials on your balcony when not present in your stateroom for safety reasons.



| Morning                         | 8:30  | 8:45   | 9:00   | 9:15 | 9:30  | 9:45                              | 10:00 | 10:15  | 10:30  | 10:45 | 11:00  | 11:15                            | 11:30  | 11:45                | 12:00   | 12:15                        | 12:30               | 12:45                                   | 1:00 | 1:15 | 1:30                 |  |
|---------------------------------|---|--|--|------|---|-----------------------------------|-------|--|--|-------|--|----------------------------------|--|----------------------|---|------------------------------|---------------------|---|------|------|----------------------|--|
| FUNNELVISION                    |   |  | Virtual Tours<br>Funnel Vision                             |      | Snow White (G)<br>Funnel Vision   |                                   |       |  |  |       | 101 Dalmatians (G)<br>Funnel Vision                                      |                                  |  |                      |   |                              |                     | Lady and the Tramp (G)<br>Funnel Vision |      |      |                      |  |
| BUENA VISTA THEATRE             |   |  |  |      |   |                                   |       |  | Finding Nemo (G)<br>Duration: 1 Hours 40 Minutes |       |  |                                  |  |                      | <b>DOLBY 3D</b>                                       |                              |                     |   |      |      | Shopping Talk<br>BVT |  |
| CHARACTER                       | For detailed character appearances, call 7-PALS or refer to the Character Screen in the Lobby Atrium. |  |  |      |   |                                   |       |  |  |       |  |                                  |  |                      |   | Princess Gathering<br>Atrium | Donald<br>Dk 4, Mid | Daisy<br>Dk 4, Mid                      |      |      |                      |  |
| FUN FOR ALL AGES                |   |  |  |      |   |                                   |       | Bingo Pre Sales                                |  |       | Into the Wild:<br>Alaskan Naturalist Presentation<br>Walt Disney Theatre |                                  | The Generation<br>Game<br>Wavebands                |                      | Family Crafts:<br>Bead Creations<br>Animator's Palate |                              |                     |   |      |      |                      |  |
|                                 | Promenade Lounge  |  |  |      | Lobby Atrium  |                                   |       |  | Promenade Lounge                                 |       |  |                                  |  |                      |   |                              |                     |   |      |      |                      |  |
|                                 | Board Games available in Diversions and Promenade Lounge  |  |  |      | Walk a Mile<br>Deck 10, Fwd, Elevators                                      | Shuffleboard Tournament<br>Deck 4 |       |  | Pictionary<br>Promenade Lounge                   |       | Animation - Mickey<br>Animator's Palate                                  |                                  | Disney Vacation Club<br>Studio Sea - Group Preview |                      | Port & Shopping Talk<br>Buena Vista Theatre           |                              |                     |   |      |      |                      |  |
| ADULTS                          | Friends of Bill W.<br>Cadillac Lounge   | Disney Vacation Club<br>Wavebands - Member Celebration | Disney's Art of Entertaining<br>Studio Sea - The Appetizer |      |   |                                   |       | Foosball<br>Wide World of Sports               |  |       |  | Club 18*21 - Lunch<br>Parrot Cay | 70's Music Trivia<br>Diversions                    |                      |   |                              |                     |   |      |      |                      |  |
|                                 |   | Footprint Analysis<br>Vista Spa Fitness Cntr           | Introduction to Acupuncture<br>Diversions                  |      |   |                                   |       | Detox for Health & Weight Loss<br>Outlook Cafe |  |       | Wine Tasting (21+)<br>Cadillac Lounge (Pre-Book)                         |                                  | How to Increase Your Metabolism<br>Outlook Cafe    |                      |   |                              |                     |   |      |      |                      |  |
| VIBE<br>14-17 YEARS OLD         |   |  |  |      |   |                                   |       |  | Open House                                       |       |  |                                  |  |                      | Sports Deck Fun                                       |                              |                     |   |      |      |                      |  |
| EDGE<br>11-14 YEARS OLD         |   |  |  |      |   |                                   |       | Open House                                     |  |       |  |                                  |  |                      | Animation Cells                                       |                              |                     |   |      |      |                      |  |
| OCEANEER LAB<br>3-12 YEARS OLD  |   |  |  |      |   | Detective School                  |       |  |  |       | Flubber  |                                  |  |                      | Lunch   |                              |                     |   |      |      |                      |  |
| OCEANEER CLUB<br>3-12 YEARS OLD |   |  |  |      | Youth Activities Open House<br>"Little Einsteins"<br>9:15 a.m. - 10:00 a.m. | Transition                        |       |  |  |       | Sebastian's Junkanoo Jam   |                                  |  | Mouseketeer Training | Lunch   |                              |                     |   |      |      |                      |  |

| Afternoon                       | 1:45   | 2:00   | 2:15 | 2:30  | 2:45                                       | 3:00                            | 3:15                                   | 3:30   | 3:45  | 4:00  | 4:15 | 4:30                       | 4:45                | 5:00  | 5:15                       | 5:30 | 5:45 | 6:00                                      | 6:15 | 6:30 | 6:45   |
|---------------------------------|--|--|------|---|--|---------------------------------|--|--|---|---|------|----------------------------|---------------------|---|----------------------------|------|------|---|------|------|--------|
| FUNNELVISION                    |  | Tarzan (G)<br>Funnel Vision  |      |   |  |                                 |  | Toy Story (G)<br>Funnel Vision                 |   |   |      |                            |                     | Virtual Tours<br>Funnel Vision                      |                            |      |      | Disney Nature: Earth (G)<br>Funnel Vision |      |      |        |
| BUENA VISTA THEATRE             | Port & Shopping Talk<br>< Begins at 1:30 p.m.  |  |      |   |  |                                 |  | Snow White (G)<br>Duration: 1 Hours 23 Minutes |   |   |      |                            |                     | Wreck-It Ralph (PG)<br>Duration: 1 Hours 47 Minutes |                            |      |      |   |      |      |        |
| CHARACTER                       |  |  |      |   |  | Chip & Dale<br>Lobby, Port Side | Mickey<br>Lobby, Port Side             |  |   |   |      |                            |                     | Mickey<br>Lobby, Port Side                          | Minnie<br>Lobby, Port Side |      |      |   |      |      |        |
| FUN FOR ALL AGES                |  | Alaskan Bears:<br>Alaskan Naturalist Presentation<br>Walt Disney Theatre |      | Disney Tunes<br>Trivia Live<br>Promenade Lounge                                 |  |                                 | Bingo Pre Sales                        |  |   | Captain's Welcome Reception<br>Lobby Atrium |      |                            |                     |   |                            |      |      |   |      |      |        |
|                                 | Mickey 200<br>Wavebands (Limited Availability) | Who Am I?<br>Promenade Lounge  |      |   |  |                                 | Family Superstar Karaoke<br>Studio Sea |  | Basketball Free Throw<br>Wide World of Sports | DJ Wendell<br>Promenade Lounge              |      |                            |                     |   |                            |      |      |   |      |      |        |
| ADULTS                          |  | Crafts: Tile Coasters<br>Animator's Palate                               |      | Animation - Mickey<br>Animator's Palate   |  |                                 |  | Watch Seminar<br>Promenade Lounge              |   | Sports Trivia<br>Diversions                 |      |                            |                     |   |                            |      |      |   |      |      |        |
|                                 | Books and magazines available in Cove Cafe     |  |      |   | Art of The Theme Show Tour<br>Meet at Palo |                                 |  |  |   |   |      |                            |                     |   |                            |      |      |   |      |      |        |
| VIBE<br>14-17 YEARS OLD         | Sports Deck Fun                                |  |      |   |  | Picture This                    |  |  |   | Video Scavenger Hunt                        |      |                            |                     |   |                            |      |      |   |      |      |        |
| EDGE<br>11-14 YEARS OLD         | Animation Cells                                |  |      |   |  | Picture This                    |  |  |   | Sports Deck                                 |      |                            |                     |   | Open House                 |      |      |   |      |      |        |
| OCEANEER LAB<br>3-12 YEARS OLD  |  |  |      |   | Magic Show                                 |                                 |  |  | Ratatouille Cooking School                    |   |      | Around the World in 7 days |                     |   |                            |      |      |   |      |      | Dinner |
| OCEANEER CLUB<br>3-12 YEARS OLD | Transition                                     |  |      | Youth Activities Open House<br>"Story Time with Belle"<br>2:45 p.m. - 3:15 p.m. | Transition                                 |                                 |  |  | Do Si Do with Snow White                      |   |      |                            | Aladdin's Adventure |   |                            |      |      |   |      |      | Dinner |
| OUT & ABOUT                     |  |  |      |   |  |                                 |  |  |   | Sports Deck<br>Edge                         |      |                            |                     |   |                            |      |      |   |      |      |        |

| Evening                         | 7:00                                  | 7:15  | 7:30                   | 7:45                | 8:00                                       | 8:15 | 8:30 | 8:45                                      | 9:00              | 9:15                         | 9:30  | 9:45                       | 10:00                                  | 10:15 | 10:30   | 10:45 | 11:00 | 11:15 | 11:30 | 11:45      | 12:00           |
|---------------------------------|---------------------------------------|---|------------------------|---------------------|--|------|------|---|-------------------|------------------------------|---|----------------------------|--|-------|---|-------|-------|-------|-------|------------|-----------------|
| FUNNELVISION                    |                                       |   |                        |                     | Disney Nature: Oceans (G)<br>Funnel Vision |      |      |   |                   |                              | WALL-E (G)<br>Funnel Vision                         |                            |  |       |   |       |       |       |       |            |                 |
| BUENA VISTA THEATRE             |                                       |   |                        |                     |  |      |      |   |                   |                              | Wreck-It Ralph (PG)<br>Duration: 1 Hours 47 Minutes |                            |  |       | The Avengers (PG-13)<br>Duration: 2 Hours 22 Minutes  |       |       |       |       |            | <b>DOLBY 3D</b> |
| CHARACTER                       | Golden Mickeys<br>Walt Disney Theatre | Mickey<br>Dk 4, Mid                                     |                        | Minnie<br>Dk 4, Mid |  |      |      | The Golden Mickeys<br>Walt Disney Theatre |                   |                              | Mickey<br>Lobby, Port Side                          | Pluto<br>Lobby, Port Side  |  |       | For detailed character appearances, call 7-PALS or refer to the Character Screen in the Lobby Atrium. |       |       |       |       |            |                 |
| FUN FOR ALL AGES                |                                       | Variety: Adam Ace<br>Wavebands                          |                        |                     |  |      |      |   |                   |                              |   |                            |  |       |   |       |       |       |       |            |                 |
|                                 |                                       | Game Show: The Feud<br>Studio Sea                       |                        |                     |  |      |      |   |                   |                              | The Golden Mickeys After Party<br>Studio Sea        |                            | Family Superstar Karaoke<br>Studio Sea |       |   |       |       |       |       |            |                 |
|                                 |                                       | Captain's Welcome Reception<br>Lobby Atrium             |                        |                     |  |      |      |   |                   |                              | 50's & 60's with Sonic Groove<br>Promenade Lounge   |                            |  |       |   |       |       |       |       |            |                 |
| ADULTS                          |                                       | Music & Martinis with<br>Seth Gibson<br>Cadillac Lounge |                        |                     |  |      |      |   |                   | The Signed LIVE<br>Wavebands | Variety: Michael Harrison<br>Wavebands              | Disco Legends<br>Wavebands | DJ Wendell Party's On<br>Wavebands     |       |   |       |       |       |       |            |                 |
| VIBE<br>14-17 YEARS OLD         |                                       | Open House  |                        |                     |  |      |      |   |                   | Pump It Up                   |   |                            |  |       |   |       |       |       |       |            |                 |
| EDGE<br>11-14 YEARS OLD         | Mustache Challenge                    |   |                        |                     | Gender Wars                                |      |      |   |                   | Silent Mission               |   |                            |  |       | Disney Scene It   |       |       |       |       |            |                 |
| OCEANEER LAB<br>3-12 YEARS OLD  |                                       |   |                        |                     | Marshmallow Olympics                       |      |      |   | Gasses in Action  |                              |   |                            |  |       |   |       |       |       |       |            |                 |
| OCEANEER CLUB<br>3-12 YEARS OLD |                                       |   | Nemo's Coral Adventure |                     |  |      |      |   | Heffalump Hunting |                              |   | Memory Wall                | Transition                             |       |   |       |       |       |       | Open House |                 |
| OUT & ABOUT                     |                                       |   |                        |                     |  |      |      |   |                   | Silent Mission<br>Edge       |   |                            |  |       |   |       |       |       |       |            |                 |

Symbol for activities that will be repeated during the cruise

FOLD

Fold along the dotted lines and take me with you so you don't miss any of the fun!

FOLD

IN THE SPOTLIGHT SERIES

SOLVE IT! SERIES

JUMP! SERIES

CREATE & INVENT SERIES

OPEN HOUSE

CLUBHOUSE SERIES

STORYBOOK SERIES



IMPORTANT NUMBERS

Fire/Security: 7-3001  
 Medical EMERGENCY: 7-3000  
 Health Center: 7-1923

DINNER MENU

Animator's Palate: Golden Mickeys  
 Parrot Cay: Golden Mickeys  
 Triton's: Golden Mickeys  
 Dining Times: 5:45 p.m. & 8:15 p.m.

DRINK OF THE DAY

Ocean Pearl (Alcoholic)  
 Passion Creme Fizz (Non-Alcoholic)

WEATHER FORECAST

Tuesday:  
 Scattered Showers  
 High: 58°F/15°C

Evening Attire: Formal

BUENA VISTA THEATRE



**NEMO**  
 10:30 a.m.  
 Duration: 1 hr 40 min  
 Rating: G

**Snow White and the Seven Dwarfs**  
 3:00 p.m.  
 Duration: 1 hr 23 min  
 Rating:

**RALPH**  
 5:00 p.m. & 8:00 p.m.  
 Duration: 1 hr 47 min  
 Rating: PG

**THE AVENGERS**  
 10:30 p.m.  
 Duration: 2 hr 22 min  
 Rating: PG-13

Character Appearances

PRINCESS GATHERING

Lobby Atrium - 12:00 p.m.

DONALD DUCK

Deck 4, Midship - 12:30 p.m.

DAISY DUCK

Deck 4, Midship - 1:00 p.m.

CHIP & DALE

Lobby Atrium, Port Side - 3:00 p.m.

MICKEY MOUSE

Lobby Atrium, Port Side - 3:30 p.m., 5:15 p.m. & 9:45 p.m.  
 Deck 4, Midship - 7:15 p.m.

MINNIE MOUSE

Lobby Atrium, Port Side - 5:45 p.m.  
 Deck 4, Midship - 7:45 p.m.

PLUTO

Lobby Atrium, Port Side - 10:15 p.m.



Don't forget your Camera to capture those Magical Moments!

Check here each day for Character appearances.

For detailed Character appearance information, please dial 7-PALS or see the Character Information Board in the Lobby Atrium.

Meet-and-Greets will be advertised for the length of time the line will be open. To avoid disappointment, please meet at start time of appearances.

YOUTH ACTIVITIES THEMED EXPERIENCES

**CLUBHOUSE SERIES**  
 focuses on movement and features content which appeals to younger children.

**STORYBOOK SERIES**  
 is designed with a strong connection to the Disney classic stories.

**JUMP UP! SERIES**  
 includes large ground games & movement-oriented activities.

**CREATE & INVENT SERIES**  
 will have a tactile focus allowing children to create and admire their work.

**WIN THE SPOTLIGHT SERIES**  
 focuses on children's stage presence with lots of activities and enthusiasm.

**SOLVE IT! SERIES**  
 are less active, but will challenge children with problem/solutions-based activities.

YOUTH ACTIVITIES OPEN HOUSE

Activities for families, adults and children of all ages to enjoy together.

SHIP DIRECTORY

YOUTH ACTIVITIES

|                         |              |                      |
|-------------------------|--------------|----------------------|
| DISNEY'S OCEANEER CLUB  | DECK 5, MID  | 9:00 AM - 12:00 MID  |
| DISNEY'S OCEANEER LAB   | DECK 5, MID  | 9:00 AM - 12:00 MID  |
| EDGE                    | DECK 2, MID  | 10:00 AM - 12:00 MID |
| VIBE                    | DECK 11, MID | 11:00 AM - 2:00 AM   |
| FLOUNDER'S REEF NURSERY | DECK 5, AFT  | 8:00 AM - 11:00 PM   |

RECREATION

|                           |              |   |
|---------------------------|--------------|---|
| GOOFY'S POOL              | DECK 9, MID  | 6:00 AM - 12:00 MID   |
| MICKEY'S POOL             | DECK 9, AFT  | 8:00 AM - 10:00 PM  |
| MICKEY'S SLIDE            | DECK 9, AFT  | 9:00 AM - 5:30 PM   |
| MICKEY'S SPLASH ZONE      | DECK 9, AFT  | 8:00 AM - 8:00 PM   |
| PORT ADVENTURES DESK      | DECK 3, MID  | 9:30 AM - 1:00 PM<br>2:00 PM - 5:00 PM<br>7:00 PM - 8:30 PM |
| QUIET COVE POOL           | DECK 9, FWD  | 6:00 AM - 12:00 MID   |
| VISTA FITNESS CENTER      | DECK 9, FWD  | 6:00 AM - 10:00 PM  |
| WIDE WORLD OF SPORTS DECK | DECK 10, FWD | 24 HOURS  |

GENERAL INFORMATION

|                           |             |  |
|---------------------------|-------------|--|
| BUENA VISTA THEATRE       | DECK 5, AFT | SHOWTIMES  |
| DISNEY VACATION CLUB DESK | DECK 4, MID | 9:00 AM - 12:00 PM<br>2:30 PM - 10:00 PM                     |
| FUNNEL VISION             | DECK 9, MID | SHOWTIMES  |
| FUTURE CRUISE SALES DESK  | DECK 4, MID | 9:00 AM - 12:00 PM<br>3:30 PM - 6:00 PM<br>7:30 PM - 8:30 PM |
| GUEST SERVICES            | DECK 3, MID | 24 HOURS   |
| HAIR BRAIDING             | DECK 9, MID | 9:00 AM - 12:30 PM<br>2:30 PM - 5:00 PM                      |
| MEDICAL HEALTH CENTER     | DECK 1, FWD | 9:30 AM - 11:00 AM<br>4:30 PM - 7:00 PM                      |
| PORT & SHOPPING DESK      | DECK 3, MID | 7:30 PM - 8:30 PM  |
| PRELUDES                  | DECK 4, FWD | 5:45 PM - 6:15 PM<br>8:00 PM - 8:30 PM                       |
| QUARTER MASTERS (ARCADE)  | DECK 9, MID | 24 HOURS   |
| SHUTTERS PHOTO GALLERY    | DECK 4, AFT | 10:00 AM - 11:00 PM  |
| VISTA SPA AND SALON       | DECK 9, FWD | 8:00 AM - 10:00 PM   |
| WALT DISNEY THEATRE       | DECK 4, FWD | SHOWTIMES  |

SHOPPING

|                        |             |   |
|------------------------|-------------|---|
| ART GALLERY            | DECK 4, MID | 1:00 PM - 4:00 PM<br>7:00 PM - 9:00 PM  |
| MICKEY'S MATES         | DECK 4, FWD | 9:00 AM - 10:30 PM                      |
| RADAR TRAP (DUTY FREE) | DECK 3, FWD | 1:00 PM - 5:00 PM<br>7:00 PM - 10:30 PM |
| TREASURE KETCH         | DECK 4, FWD | 9:00 AM - 10:30 PM                      |

DINING & LOUNGES

BREAKFAST

|                       |             |                    |
|-----------------------|-------------|--------------------|
| BEACH BLANKET BUFFET  | DECK 9, AFT | 7:15 AM - 10:30 AM |
| GOOFY'S GALLEY        | DECK 9, AFT | 6:30 AM - 9:00 AM  |
| TRITON'S (A-LA CARTE) | DECK 3, MID | 8:00 AM - 9:30 AM  |

LUNCH

|                      |             |                    |
|----------------------|-------------|--------------------|
| BEACH BLANKET BUFFET | DECK 9, AFT | 12:00 PM - 2:00 PM |
| GOOFY'S GALLEY       | DECK 9, AFT | 10:30 AM - 7:00 PM |
| PINOCCHIO'S PIZZERIA | DECK 9, MID | 10:30 AM - 6:00 PM |
| PLUTO'S DOG HOUSE    | DECK 9, AFT | 10:30 AM - 6:00 PM |
| PARROT CAY           | DECK 3, AFT | 12:15 PM - 1:30 PM |
| TRITON'S             | DECK 3, MID | 12:00 PM - 1:30 PM |

DINNER

|                            |              |                   |
|----------------------------|--------------|-------------------|
| ANIMATOR'S PALATE          | DECK 4, AFT  | 5:45 PM & 8:15 PM |
| PARROT CAY                 | DECK 3, AFT  | 5:45 PM & 8:15 PM |
| TRITON'S                   | DECK 3, MID  | 5:45 PM & 8:15 PM |
| PALO* (18+)                | DECK 10, AFT | 6:00 PM - 9:00 PM |
| BEACH BLANKET (A-LA CARTE) | DECK 9, AFT  | 6:30 PM - 8:30 PM |
| PLUTO'S DOG HOUSE          | DECK 9, AFT  | 6:00 PM - 9:30 PM |

LATE NIGHT SNACKS

|                             |             |                      |
|-----------------------------|-------------|----------------------|
| DIVERSIONS                  | DECK 3, FWD | 11:00 PM - 12:00 MID |
| ICE CREAM AT GOOFY'S GALLEY | DECK 9, AFT | 7:00 PM - 11:00 PM   |
| PINOCCHIO'S PIZZERIA        | DECK 9, MID | 9:30 PM - 12:00 MID  |
| PROMENADE LOUNGE            | DECK 3, AFT | 11:00 PM - 12:00 MID |

ADDED FEATURES

|                  |                        |          |
|------------------|------------------------|----------|
| BEVERAGE STATION | DECK 9, AFT, PORT SIDE | 24 HOURS |
| ROOM SERVICE     | DIAL 6801 OR 6802      | 24 HOURS |

ENTERTAINMENT - LOUNGES - BARS

Adults must be 21 and older to consume alcoholic beverages.

|                                  |              |  |
|----------------------------------|--------------|--|
| CADILLAC LOUNGE (18+)            | DECK 3, FWD  | 5:30 PM - 6:15 PM                      |
| COVE CAFE (18+)                  | DECK 9, MID  | 6:30 AM - 12:00 MID                    |
| DIVERSIONS (18+ AFTER 9:00 P.M.) | DECK 3, FWD  | 11:00 AM - 12:00 MID                   |
| INTERNET CAFE                    | DECK 3, AFT  | 24 HOURS                               |
| OUTLOOK CAFE (18+)               | DECK 10, MID | 6:30 AM - 12:00 MID                    |
| PINOCCHIO'S PIZZERIA             | DECK 9, MID  | 9:30 AM - 12:00 MID                    |
| PLUTO'S DOG HOUSE                | DECK 9, AFT  | 10:30 AM - 6:00 PM                     |
| PRELUDES                         | DECK 4, FWD  | 5:45 PM - 6:15 PM<br>8:00 PM - 8:30 PM |
| PROMENADE LOUNGE                 | DECK 3, AFT  | 8:00 AM - 12:00 MID                    |
| SIGNALS (18+)                    | DECK 9, FWD  | 9:30 AM - 10:00 PM                     |
| STUDIO SEA                       | DECK 4, MID  | SHOWTIMES                              |
| WAVEBANDS (18+)                  | DECK 3, FWD  | 9:45 PM - 2:00 AM                      |

Consumers who order raw or partially cooked, ready-to-eat food of animal origin, are hereby informed that the food is not sufficiently cooked to ensure its safety.

TIME ZONE CHANGE

Remember to turn your clocks  
**BACK 1 HOUR** upon retiring on  
 TUESDAY evening, or first  
 thing WEDNESDAY morning.

